

Inuit Owned Lands Existing Rights

MAPS AND STATISTICS FOR EXISTING RIGHTS AFFECTED BY THE
2016 DRAFT NUNAVUT LAND USE PLAN

PREPARED BY MIGUEL CHENIER, BA, MSC, SENIOR ADVISOR OF LANDS
ADMINISTRATION, PLANNING AND MANAGEMENT WITH THE
DEPARTMENT OF LANDS AND RESOURCES – NUNAVUT TUNNGAVIK
INCORPORATED

Inuit Owned Lands – Existing Rights

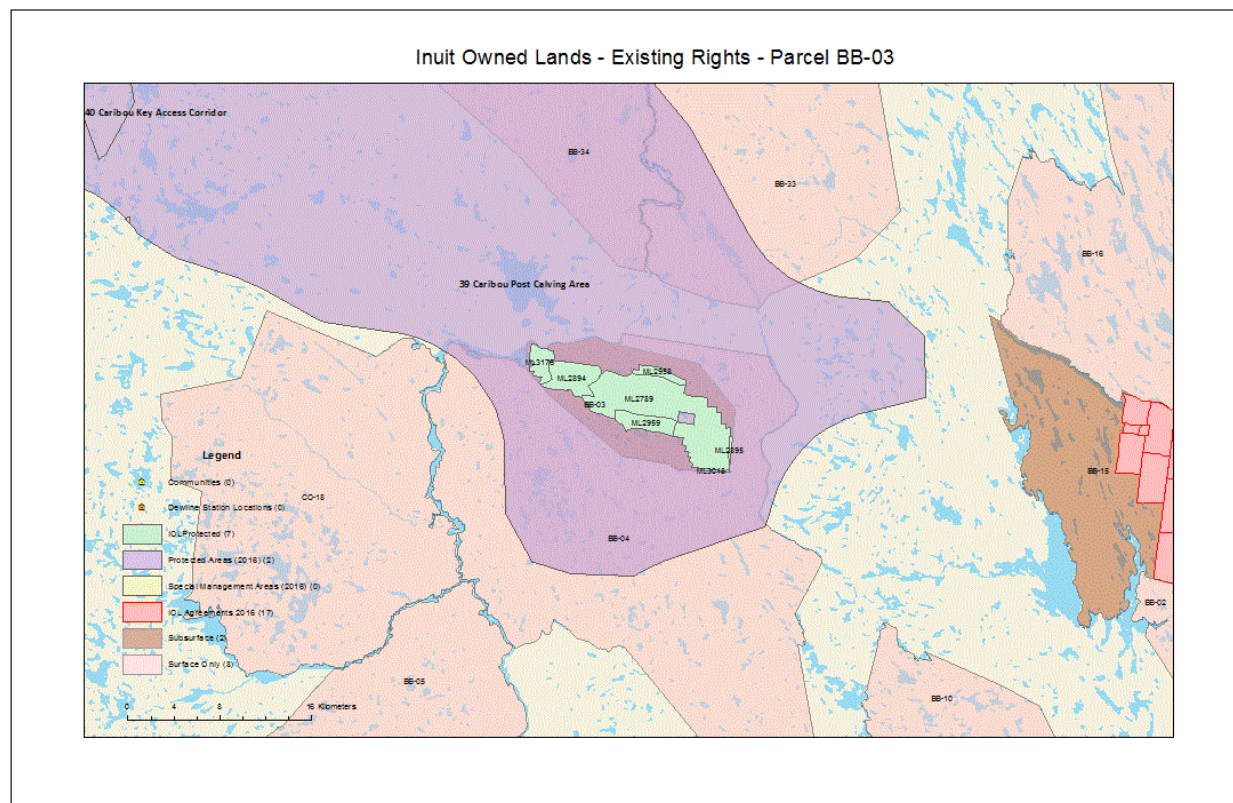
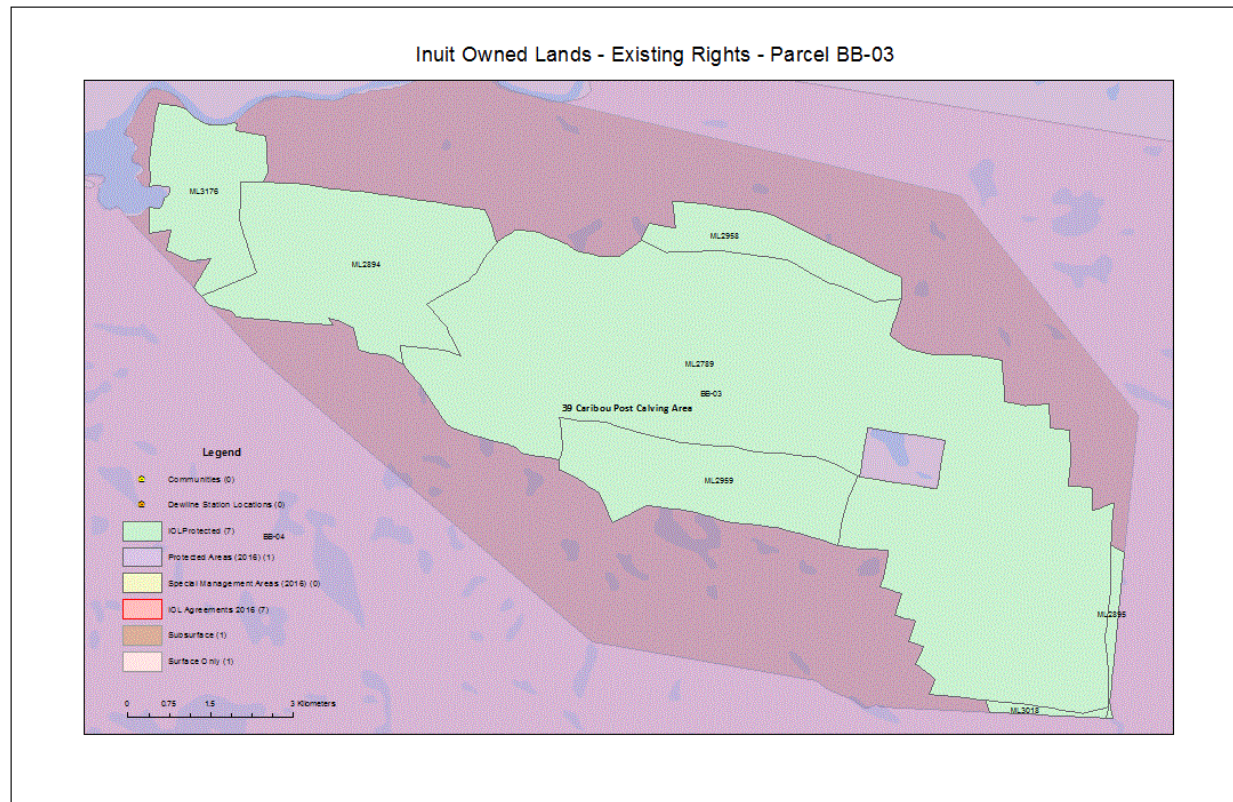
Inuit Owned Lands – Existing Rights – Summary	2
Inuit Owned Lands – Existing Rights – Parcel BB-03	4
Inuit Owned Lands – Existing Rights – Parcel BB-22	5
Inuit Owned Lands – Existing Rights – Parcel BB-24	6
Inuit Owned Lands – Existing Rights – Parcel BB-39	7
Inuit Owned Lands – Existing Rights – Parcel BB-60	8
Inuit Owned Lands – Existing Rights – Parcel CO-06.....	9
Inuit Owned Lands – Existing Rights – Parcel CO-20.....	10
Inuit Owned Lands – Existing Rights – Parcel CO-40.....	12
Inuit Owned Lands – Existing Rights – Parcel CO-64.....	13
Inuit Owned Lands – Existing Rights – Parcel RI-30	14
Inuit Owned Lands – Existing Rights – Parcel SQ-05.....	15

Inuit Owned Lands – Existing Rights – Summary

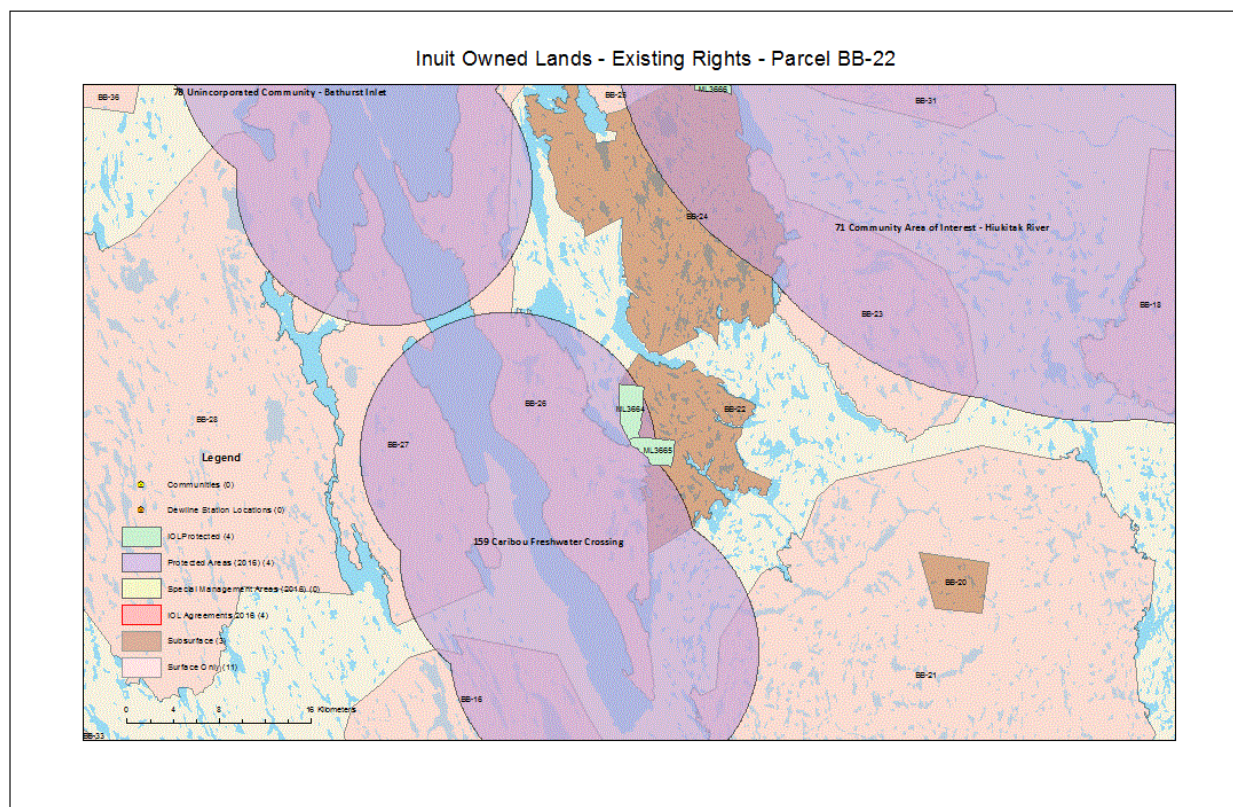
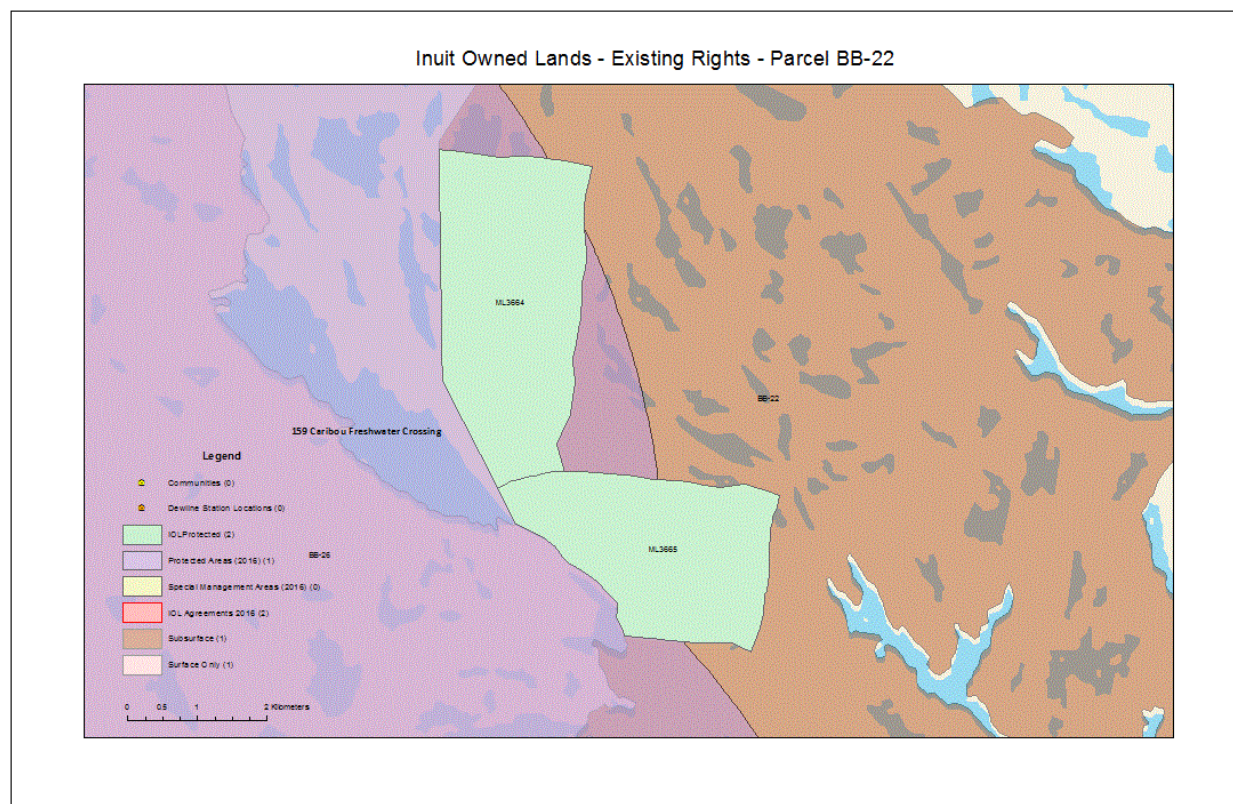
Sum of Impacted Area (Ha)				
IOLParcelID	AgreementName	AgreementWith	Region	Total
BB-03	ML2789	Xstrata Canada Corporation	Kitikmeot	4937.04
	ML2894	Xstrata Canada Corporation	Kitikmeot	1095.83
	ML2895	Xstrata Canada Corporation	Kitikmeot	45.55
	ML2958	Xstrata Canada Corporation	Kitikmeot	328.33
	ML2959	Teck Mining Worldwide Holdings Ltd.	Kitikmeot	699.50
	ML3018	Xstrata Canada Corporation	Kitikmeot	32.10
	ML3176	Xstrata Canada Corporation	Kitikmeot	488.86
BB-03 Total				7627.21
BB-22	ML3664	974134 N.W.T. Limited	Kitikmeot	827.39
	ML3665	974134 N.W.T. Limited	Kitikmeot	343.38
BB-22 Total				1170.77
BB-24	ML3666	974134 N.W.T. Limited	Kitikmeot	867.11
	ML3667	974134 N.W.T. Limited	Kitikmeot	644.44
BB-24 Total				1511.55
BB-39	ML4240	Leeward Capital Corp.	Kitikmeot	226.12
	ML4241	Leeward Capital Corp.	Kitikmeot	436.74
BB-39 Total				662.86
BB-60	HopeBay-0001	TMAC Resources Ltd	Kitikmeot	3.47
	ML3545	TMAC Resources Inc.	Kitikmeot	2.16
BB-60 Total				5.63
CO-06	ML3362	Strongbow Exploration Inc.	Kitikmeot	2011.23
CO-06 Total				2011.23
CO-20	Hood River 001	Inukshuk Exploration Incorporated	Kitikmeot	5717.53
	WestKit-0001	NRC Exploration Ltd	Kitikmeot	4207.19
CO-20 Total				9924.72
CO-40	ML3201	MMG Resources Inc.	Kitikmeot	933.92

	ML3202	MMG Resources Inc.	Kitikmeot	957.79
CO-40 Total				1891.71
CO-54	ML2797	Coppermine River Limited / Coronation Minerals Inc	Kitikmeot	2938.67
CO-54 Total				2938.67
RI-30	RI30-001	Kivalliq Energy Corporation	Kivalliq	72.36
RI-30 Total				72.36
SQ-05	SQ05-002	Canadian Orebodies Inc	Qikiqtani	1218.01
SQ-05 Total				1218.01
Grand Total				29034.72

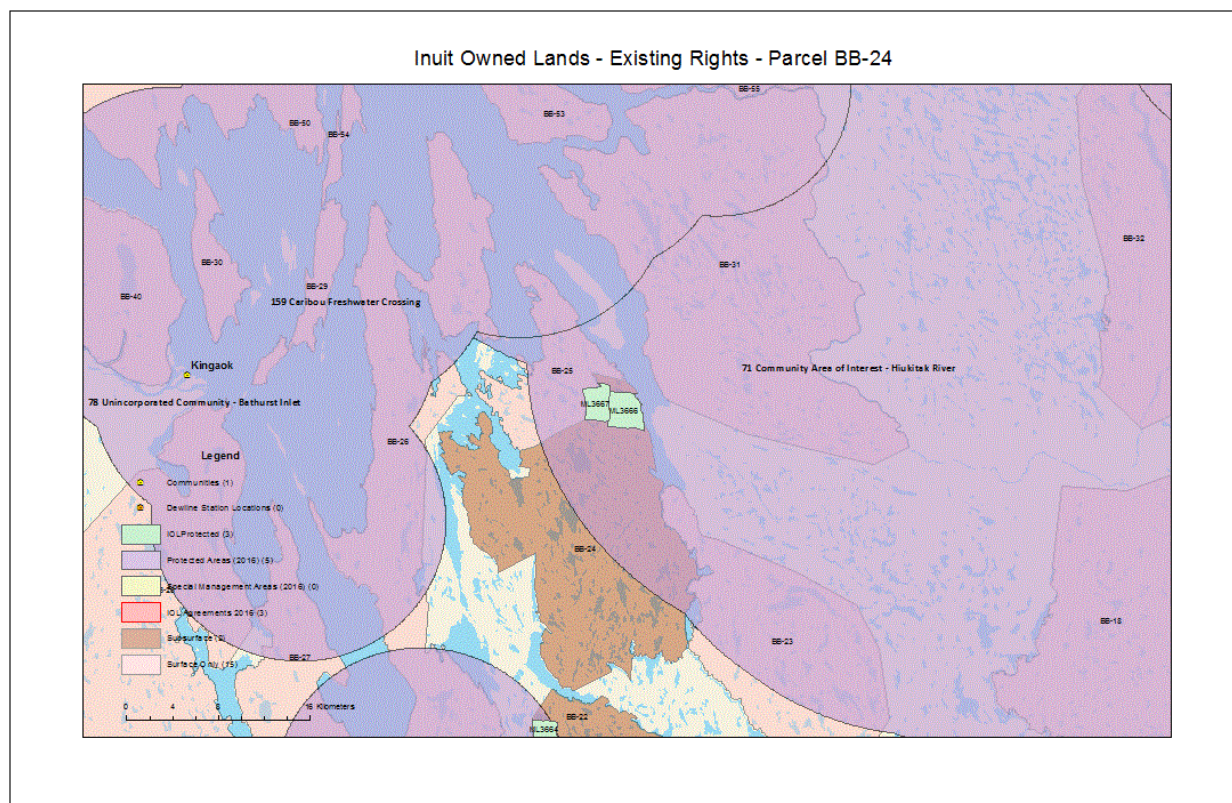
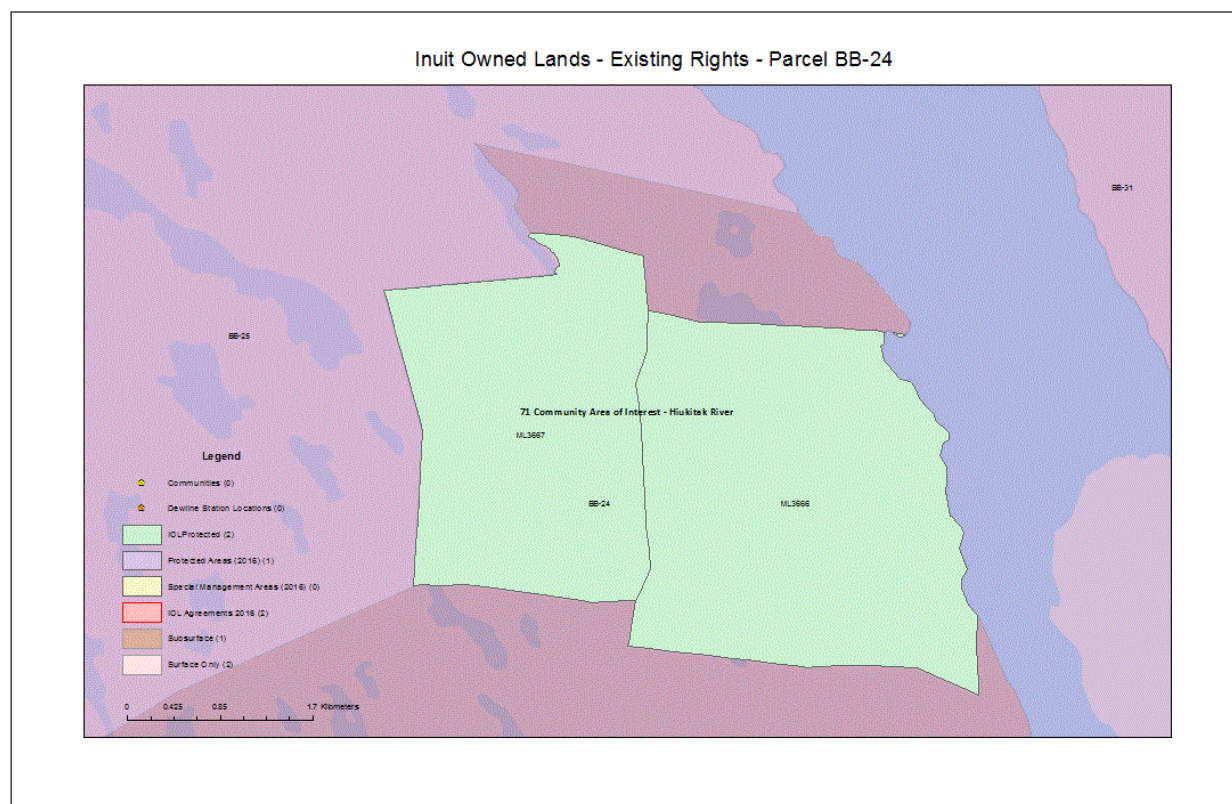
Inuit Owned Lands – Existing Rights – Parcel BB-03



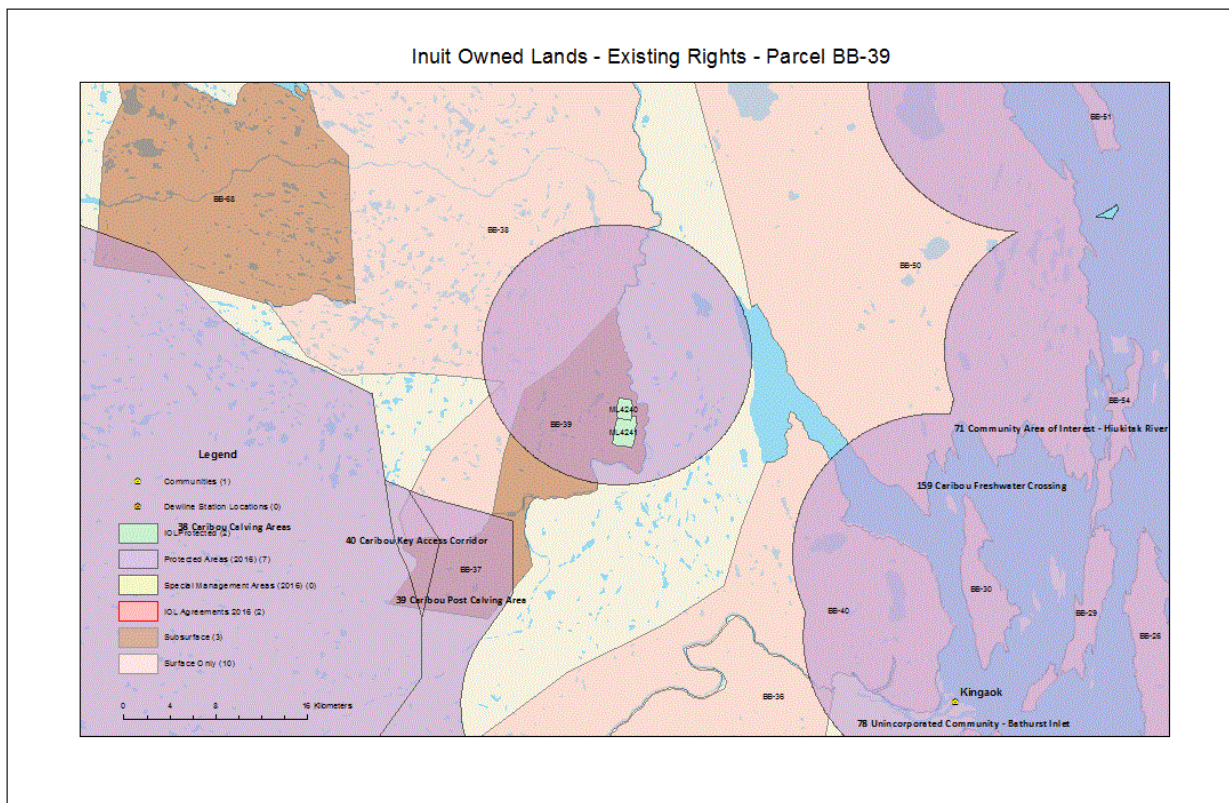
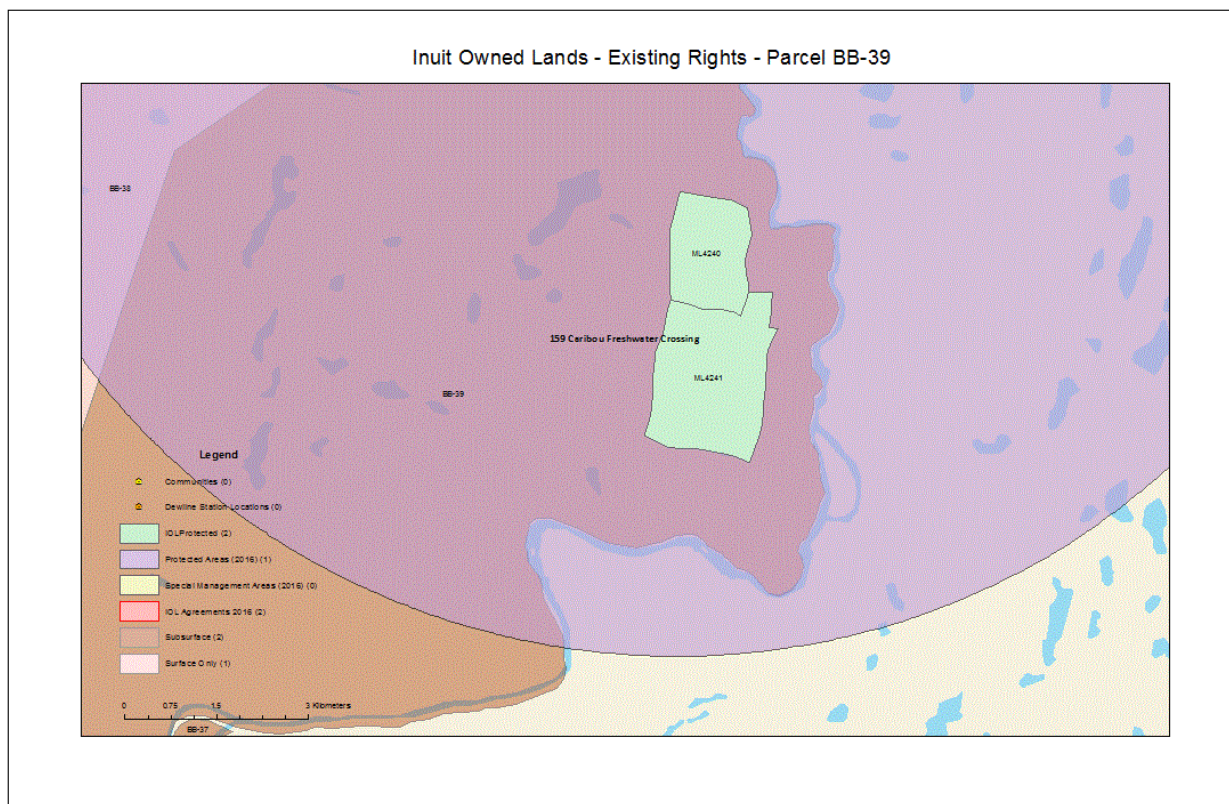
Inuit Owned Lands – Existing Rights – Parcel BB-22



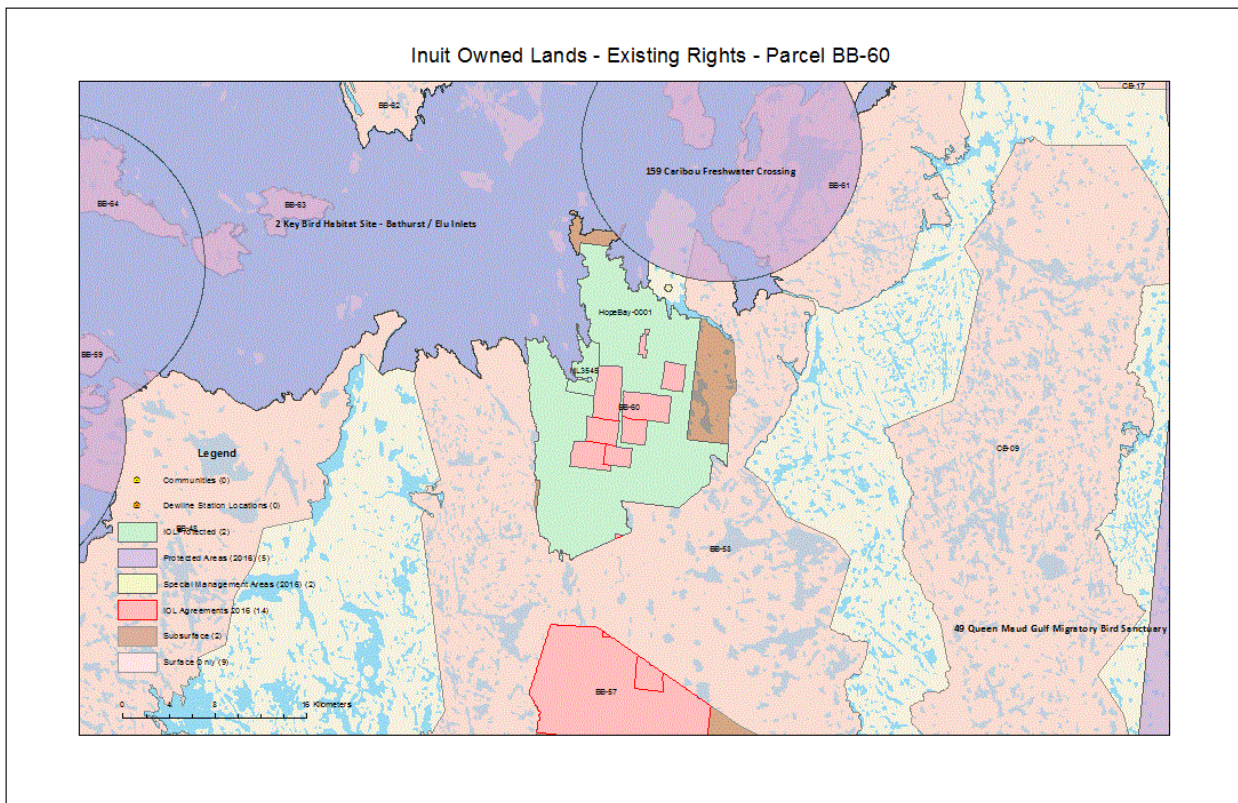
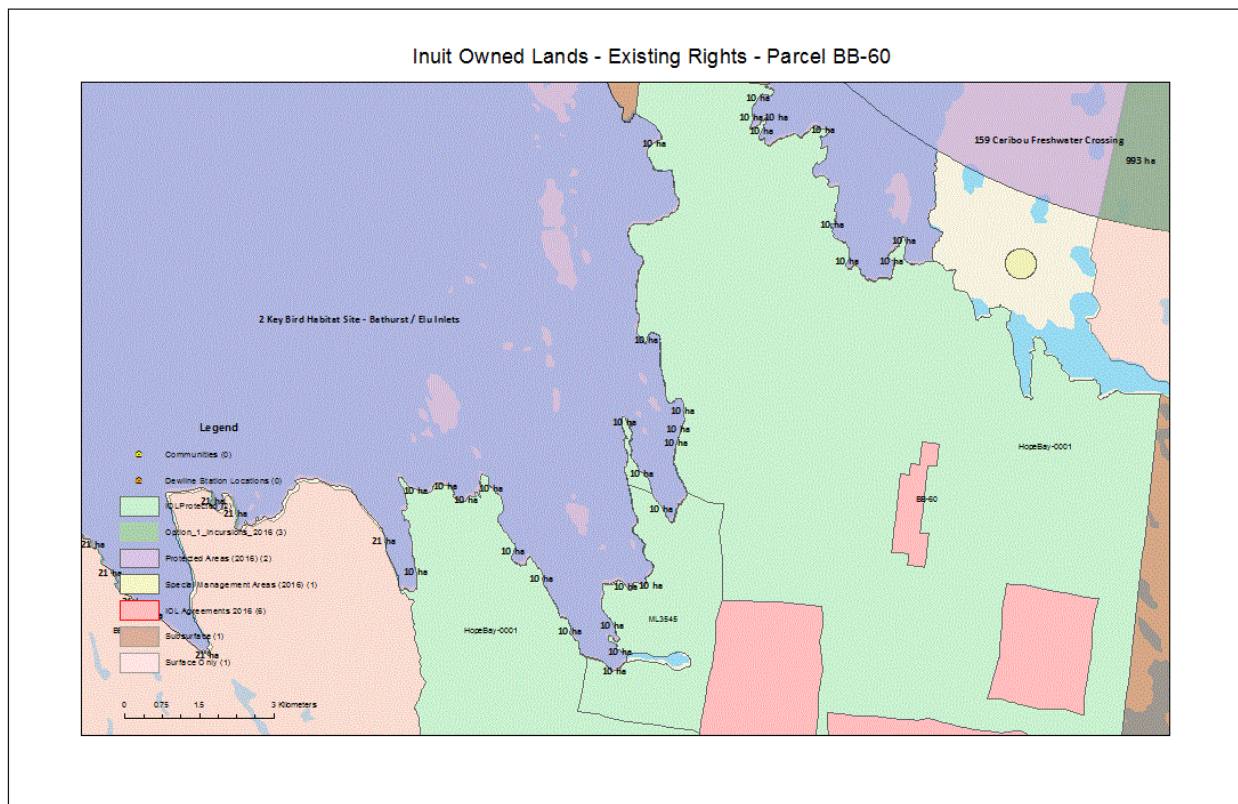
Inuit Owned Lands – Existing Rights – Parcel BB-24



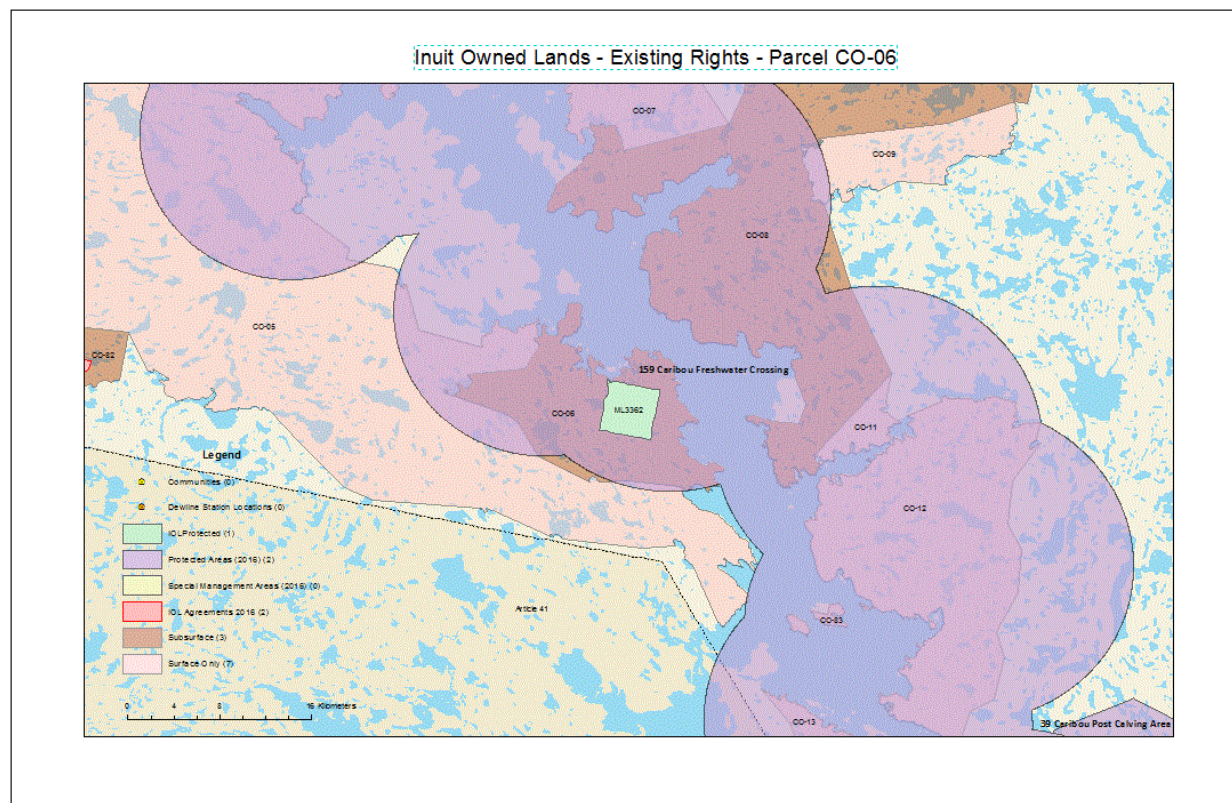
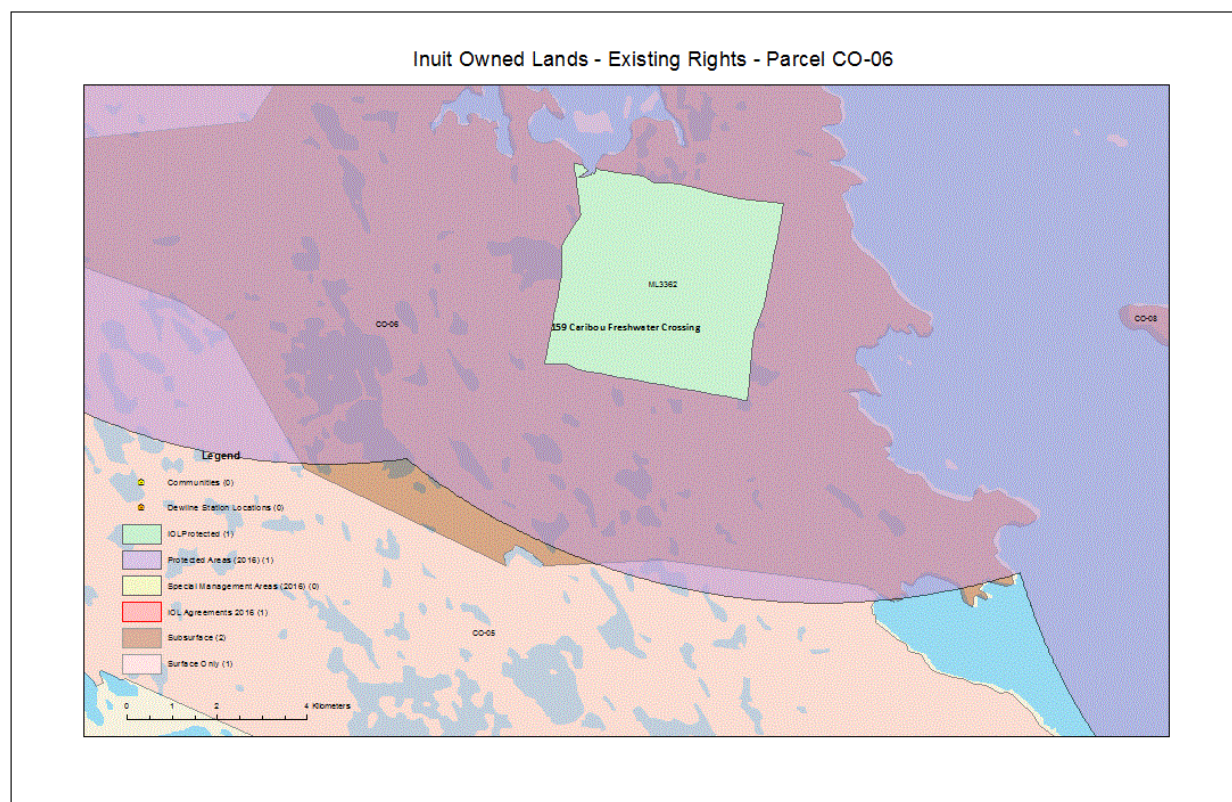
Inuit Owned Lands – Existing Rights – Parcel BB-39



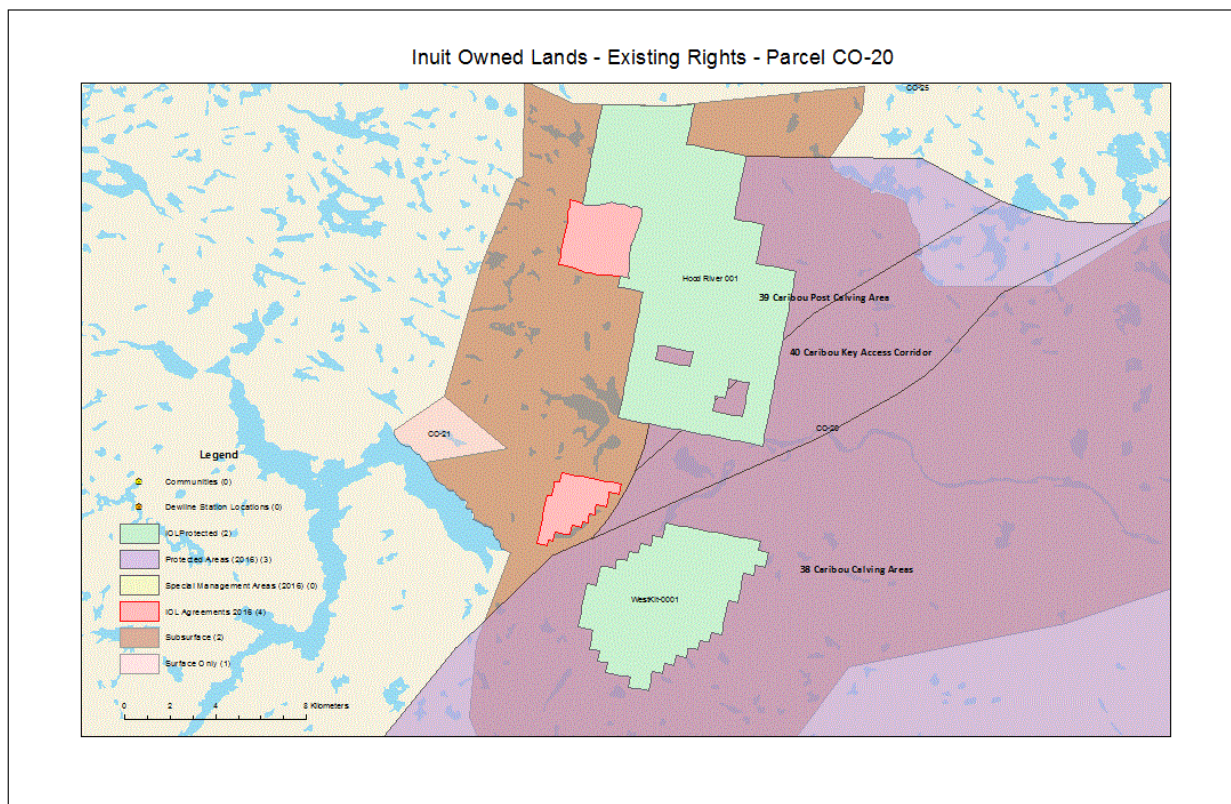
Inuit Owned Lands – Existing Rights – Parcel BB-60



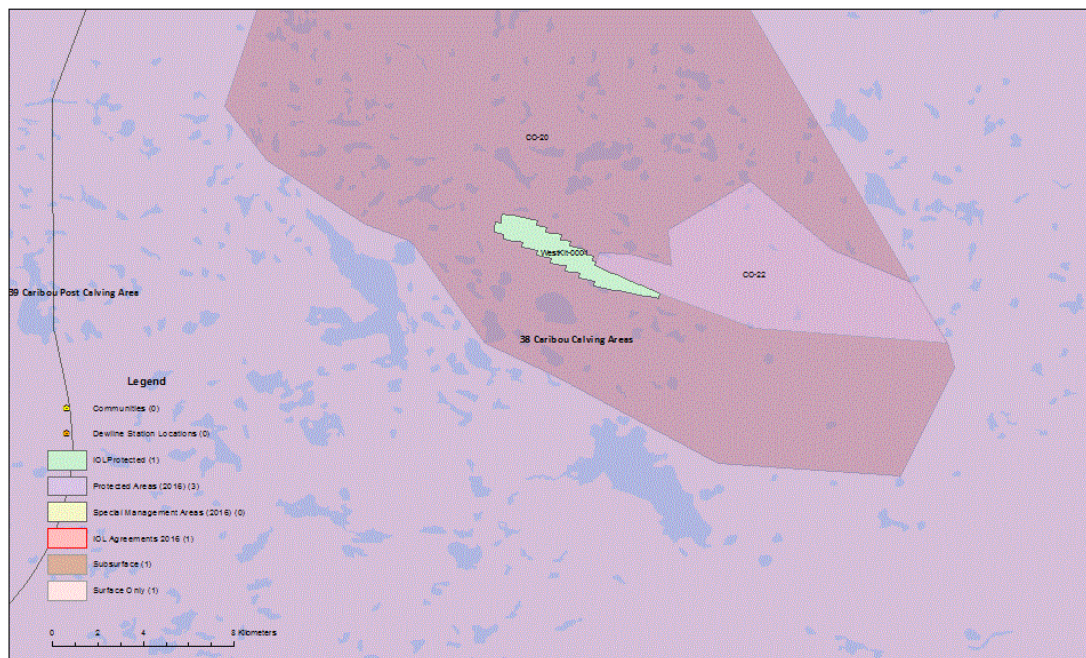
Inuit Owned Lands – Existing Rights – Parcel CO-06



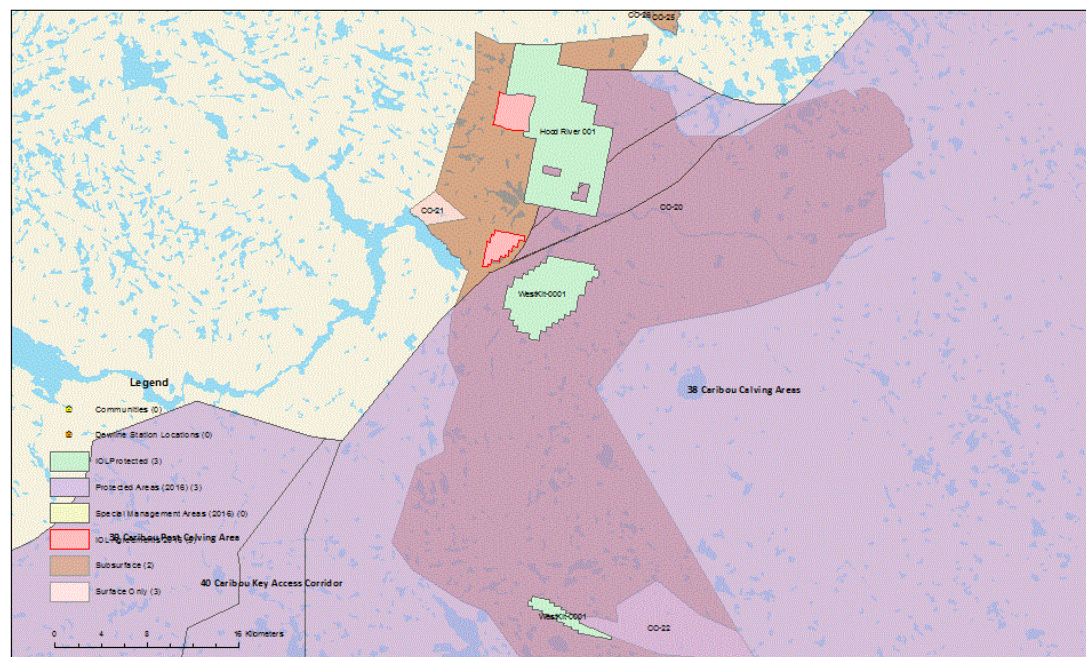
Inuit Owned Lands – Existing Rights – Parcel CO-20



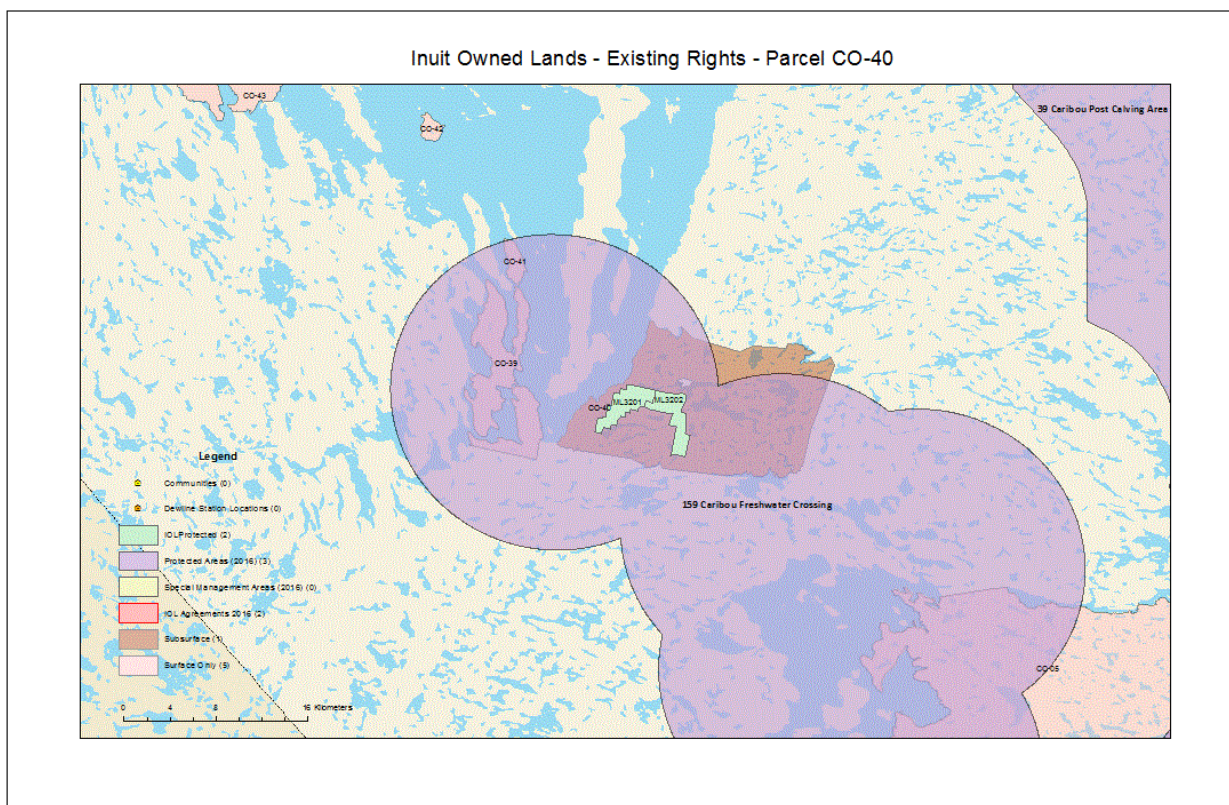
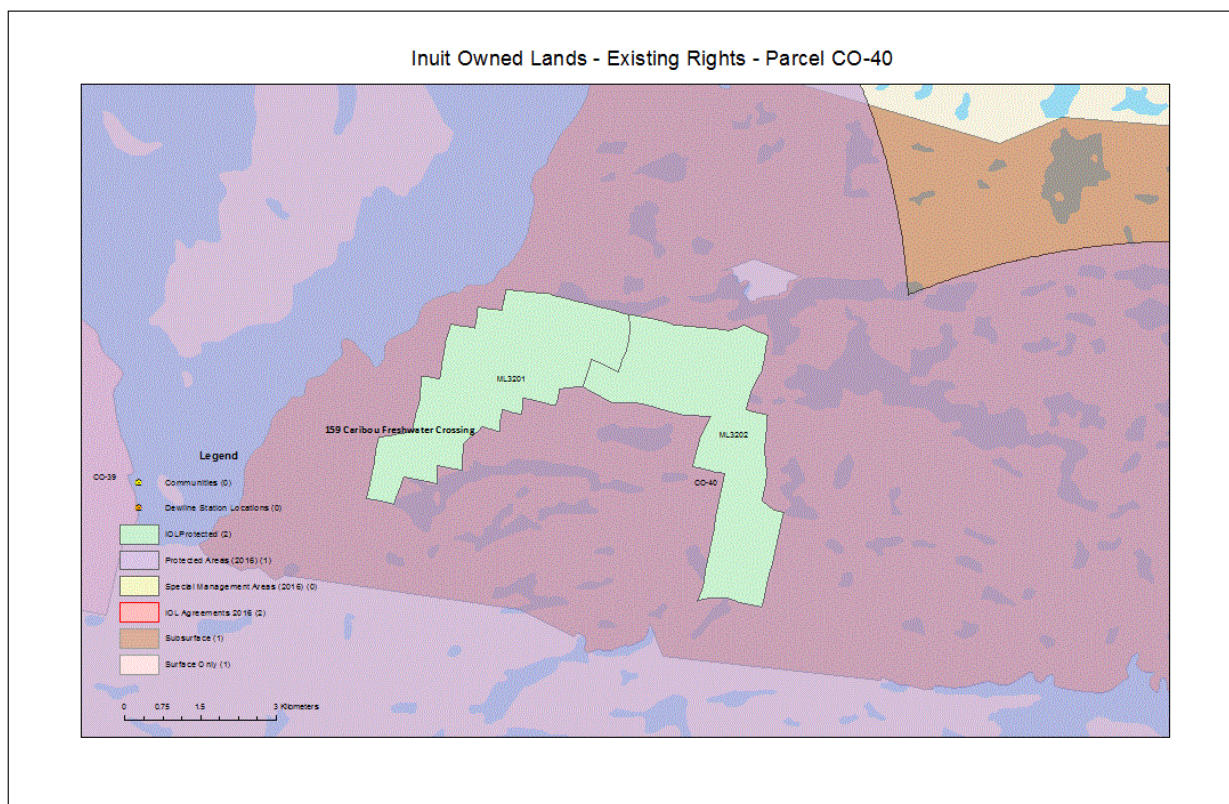
Inuit Owned Lands - Existing Rights - Parcel CO-20



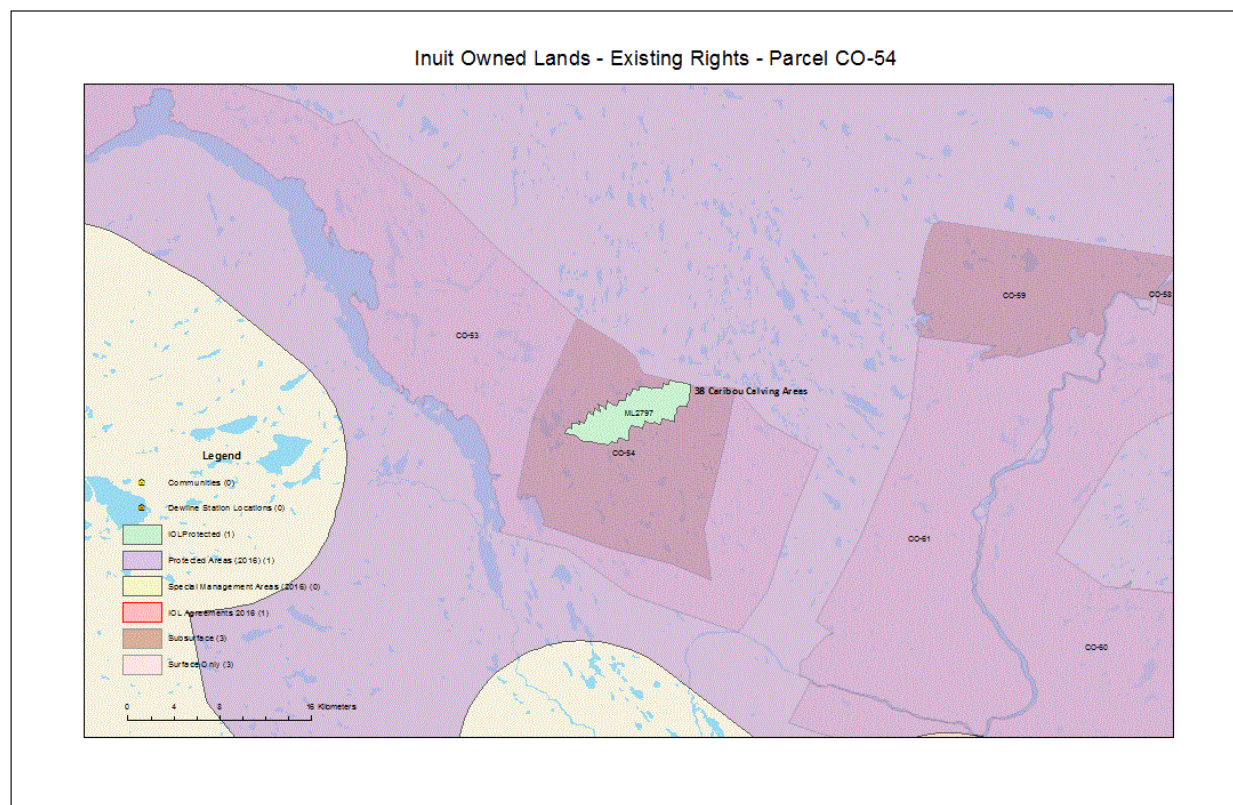
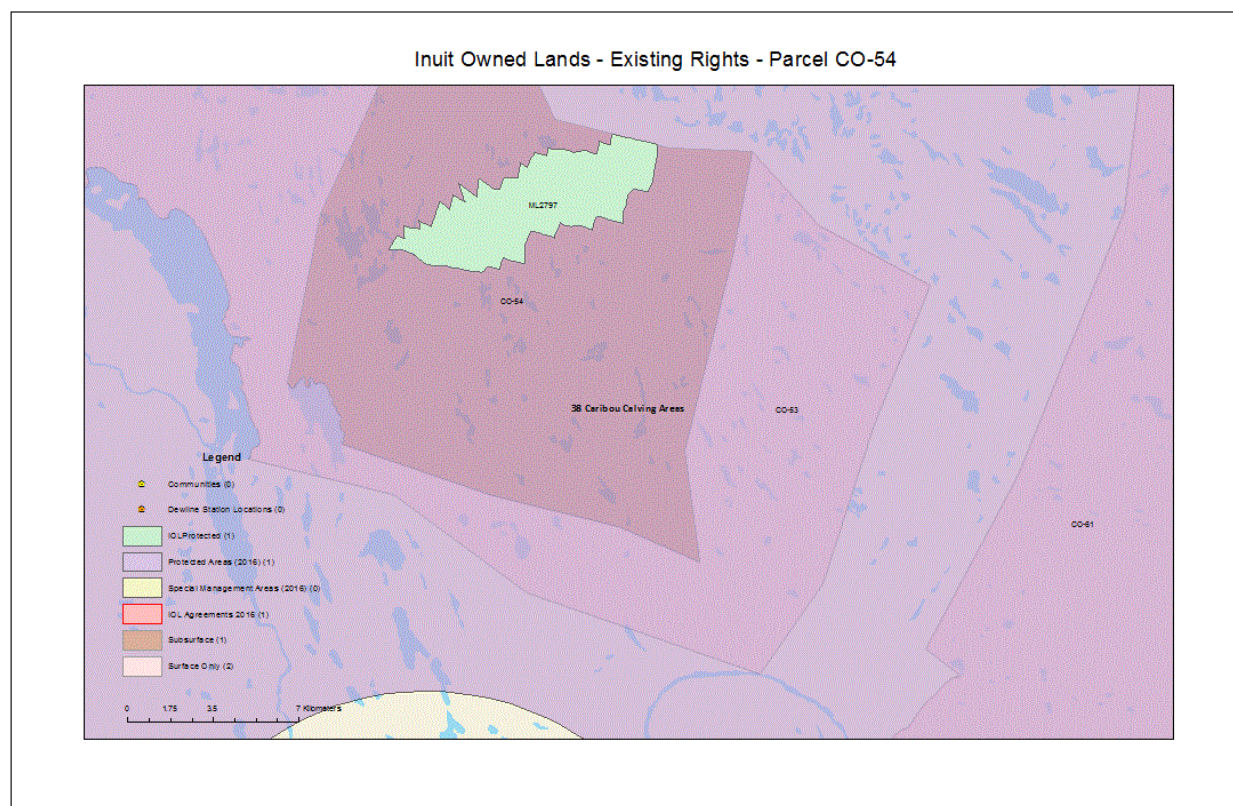
Inuit Owned Lands - Existing Rights - Parcel CO-20



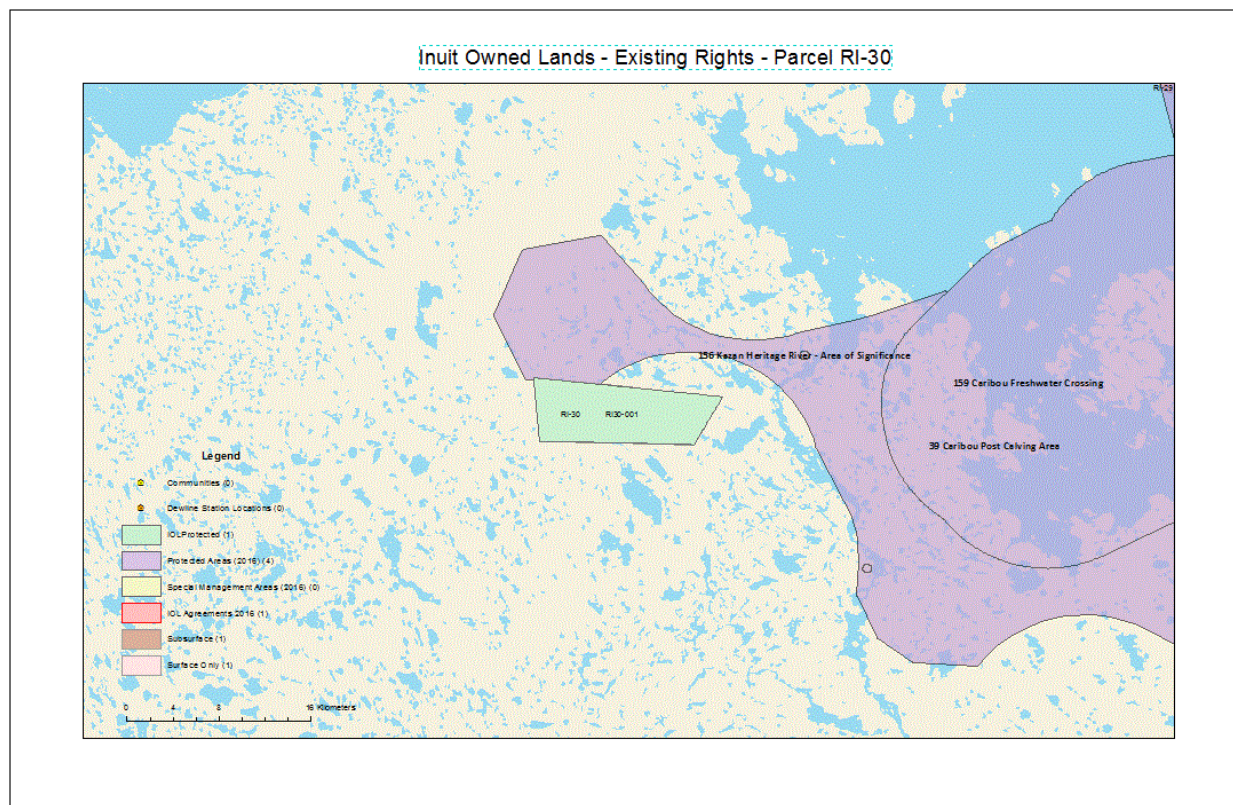
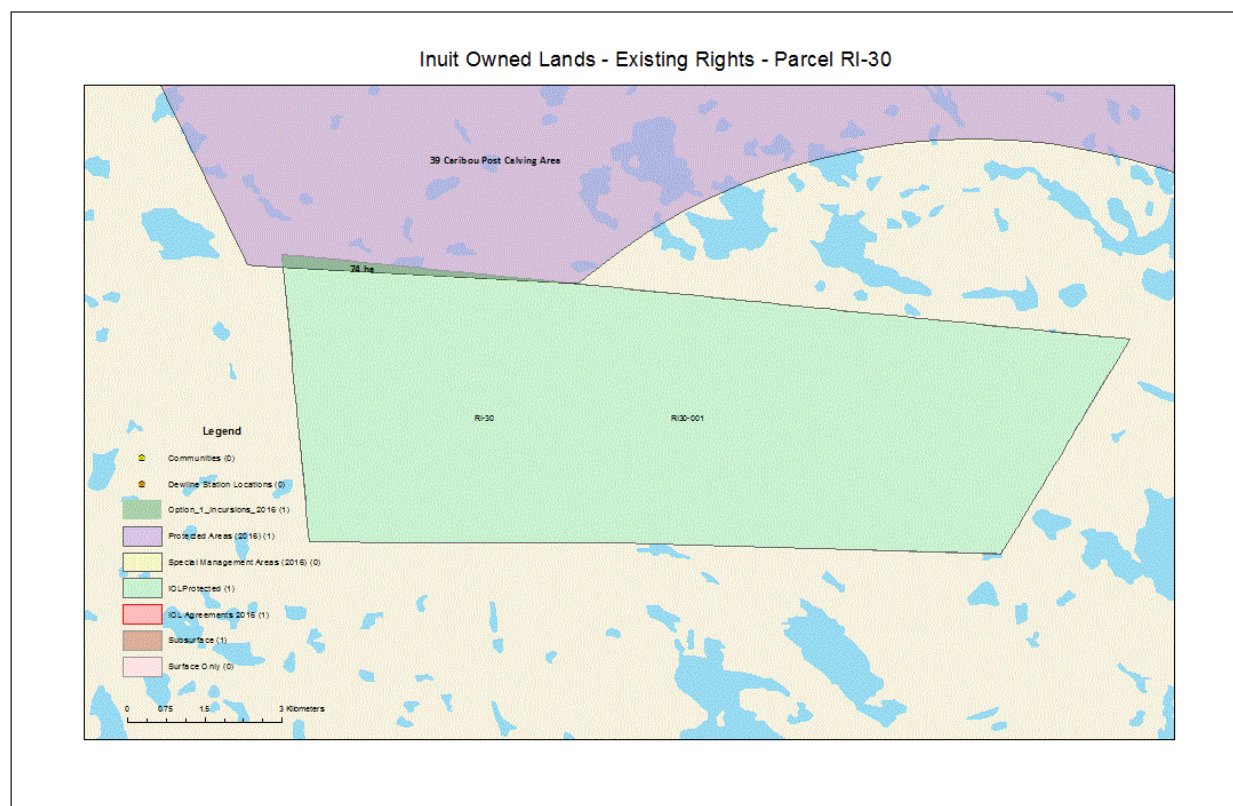
Inuit Owned Lands – Existing Rights – Parcel CO-40



Inuit Owned Lands – Existing Rights – Parcel CO-64



Inuit Owned Lands – Existing Rights – Parcel RI-30



Inuit Owned Lands – Existing Rights – Parcel SQ-05

