

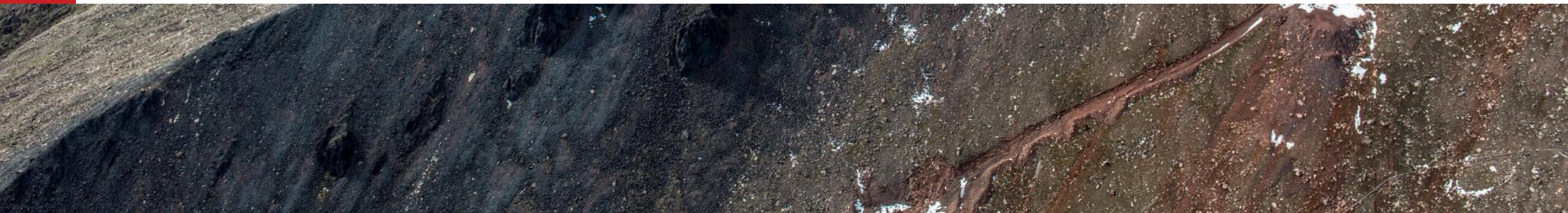


ΛΓΗΛΣ^{ᑭᑦ} 2 ᑭᑭᑭ^{ᑭᑦ} ᑭᑭᑭᑭᑭ^{ᑭᑦ}

Phase 2 Community Information Session

ᑭᑭᑭᑭᑭ^{ᑭᑦ} | ᑭᑭ 30, 2017

Pond Inlet | May 30, 2017

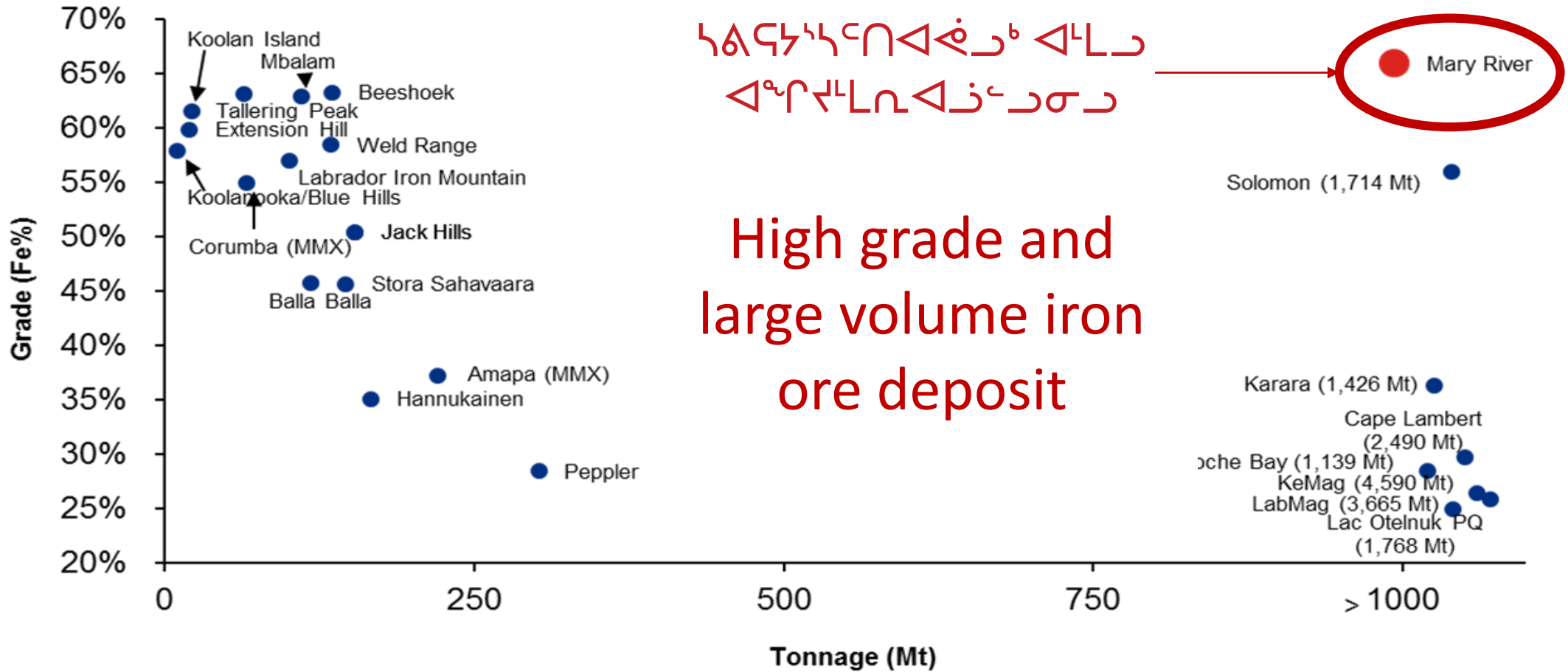


[illegible]

Project Overview

ፌዴራል ኢንፎርሜሽን ሪፖርት

Mary River Iron Ore



[illegible]

How do we mine?

1. Ore is blasted at the open pit mine



2. ገጽጽ ማሽኖች ለጥፋት ጋራ
የጽሕፈት ማረጋገጫ ለጽሕፈት ማረጋገጫ
2. Trucks haul the blasted
ore to the crusher



3. Blasted ore is crushed into lump and fines



4. Trucked to the Port site and stored



5. དྲ་འཕྲད་ཀྱི་ རྟོག་རྒྱུ་ནི་
 ལམ་ལྷན་ དྲ་འཕྲད་འབྲས་བུ་རྩལ་ཤོད་
5. A ship loader is used to
 load iron ore on ships



6. ጥሬብረት ለዓለም አቀፍ
 ምርቶች ይላካል።
6. Ore is shipped to our
 customers worldwide



$\nabla \Delta^L L^C$

$\wedge C \cap b^e \sigma n \triangleleft \nabla b^< \wedge C?$

- [illegible]

Why do we need to expand?

- In the first two years of production we have learned that mining is possible in the far north
- Baffinland's permit allows to mine and ship 4.2 million tonnes of iron ore per year. This is not sustainable
- Phase 2 approvals will allow for 12 million tonnes of iron ore to be mined and shipped per year
- Phase 2 and the creation of the railroad is critical to the success of Baffinland

Project phases

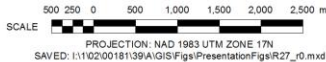


▷ ⚡ ς^a σ ◁ ς^b ⋈^b

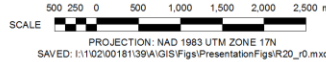


Mine Site

⚡⚡⚡⚡⚡



Changes at the Mine Site



$\triangleright \hookrightarrow \zeta^a \sigma \triangleleft \zeta^b \delta \wedge \Gamma$
 $\triangleleft \rho \Gamma \hookrightarrow \rho \zeta^b \supset \subset$

- $\Delta\sigma^{\text{ክፍል}} \propto \Delta\sigma^{\text{ሰፊ}} \propto \Delta\sigma^{\text{ጥንቃቄ}}$
- $\sigma^{\text{ጥንቃቄ}} \propto \Delta\sigma^{\text{ሰፊ}} \propto \Delta\sigma^{\text{ጥንቃቄ}}$
- $\Delta\sigma^{\text{ክፍል}} \propto \Delta\sigma^{\text{ሰፊ}} \propto \Delta\sigma^{\text{ጥንቃቄ}}$



Changes at the Mine Site

- Construction of upgraded camp
- Moving crushing of ore to Milne Port
- Construction of rail line



Δ^αρ^αγκ^αλ^ασ^α

Transportation

ᐅᐱᐅᓐᑕᓐᑕᐱ ᓄᓇᓐᑭᐱᐅᑕᓐ ᐱᓐᑭᐱᓐᑕ ᐱᓐᑭᐱᓐᑕ

- >ᓐᑕᐱᓐᑕᓐᑕ ᐱᓐᑭᐱᐅᑕᓐ
- ᑕᐱᐅᓐᑕᐱᓐᑕ ᓇᓇᓐᑕ
- ᐱᓐᑕᓐᑕ ᐱᓐᑕᓐᑕᓐᑕ ᐱᓐᑕᓐᑕᓐᑕ
ᐱᓐᑕᓐᑕᐱᓐᑕ ᐱᓐᑕᓐᑕ ᓇᓇᓐᑕᓐᑕᓐᑕ
- ᐱᓐᑕᓐᑕ ᐱᓐᑕᓐᑕ ᓐᑕᓐᑕᓐᑕ
- ᓐᑕᓐᑕ ᓄᓇᓐᑭᐱᐅᑕᓐ
- ᐅᓐᑕᓐ ᓐᑕᓐᑕᓐᑕᓐᑕ

North railway infrastructure

- Raised railway bed and track
- Communication towers
- Sheds containing power switching and signaling systems
- Rail crossings for people and animals
- Two trains
- Two round trips per day

መጽሐፍ ዘክርያስ ምዕራፍ ፩

- [illegible]

Rail vs Tote Road

- Number of ore haul truck drivers will decrease over the life of the project
- Other types of jobs will replace these positions
- More efficient way to move more ore
- Less fuel consumption
- Less waste generation
- Less dust emissions
- Minimizes animal interactions