

ᐃᓂᓂᓂᓂᓂ

Milne Port



**LEGEND:**

- COMMUNITY
- MILNE INLET TOTE ROAD
- PROPOSED INFRASTRUCTURE
- POTENTIAL DEVELOPMENT AREA
- QIA COMMERCIAL LEASE BOUNDARY
- WATER
- AGGREGATE SOURCE (BORROW PIT)
- AGGREGATE SOURCE (QUARRY)

**NOTES:**

1. BASE MAP: © ESRI DATA AND MAPS (ONLINE) (2016). REDLANDS, CA: ENVIRONMENTAL SYSTEMS RESEARCH INSTITUTE. ALL RIGHTS RESERVED.

2. MILNE PORT INFRASTRUCTURE PROVIDED BY HATCH, AUGUST 2, 2016.

SCALE: 200 100 0 200 400 600 800

PROJECTION: NAD 1983 UTM ZONE 17N

SAVED: 1:11/02/0018139A/GIS/Figs/PresentationFigs/R28\_r0.mxd

**LEGEND:**

• COMMUNITY	— WATER
— MILNE INLET TOTE ROAD	— PDA / QIA COMMERCIAL LEASE
— PROPOSED NORTH RAILWAY	— REVISED PDA FOR PHASE 2 PROPOSAL
— ADDITIONAL PHASE 2 INFRASTRUCTURE	— INAC FORESHORE LEASE

**NOTES:**

1. BASE MAP: DETAILED TOPOGRAPHY BY EAGLE MAPPING (2005).
2. MILNE PORT INFRASTRUCTURE PROVIDED BY HATCH, JANUARY 25, 2017.
3. FIGURE CREATED BY KNIGHT PIESOLD LTD.

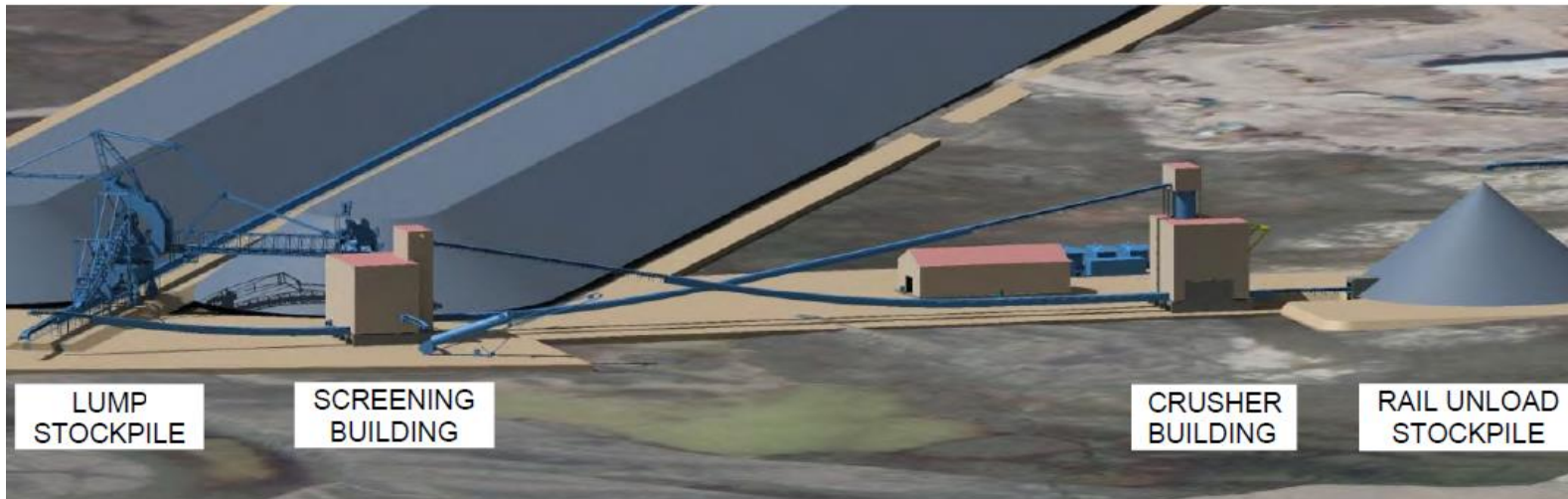
PROJECTION: NAD 1983 UTM ZONE 17N  
 SAVED: 1:1102:0018139A\GIS\Figs\Presentation\Figs\R21\_0.mxd

## ፖርታጋልኛ ካላፍሪካንግ

- ፊኑታን ስፔሻላይዝድ ፖርታጋልኛ ካላፍሪካንግ
- ለፊኑታን ስፔሻላይዝድ ፖርታጋልኛ ካላፍሪካንግ
- ለፊኑታን ስፔሻላይዝድ ፖርታጋልኛ ካላፍሪካንግ
- ለፊኑታን ስፔሻላይዝድ ፖርታጋልኛ ካላፍሪካንግ

## Crushing of iron ore

- Move from Mine site to Milne Port
- Indoor crushing of iron ore
- Less dust in the environment
- Stable temperatures for equipment and employees



# Supporting infrastructure

- Additional laydown areas for stockpile
- Second temporary barge landing
- Rail maintenance facility:
  - Management offices
  - Repair areas
  - Maintenance shop
  - General storage
  - Railway maintenance yard

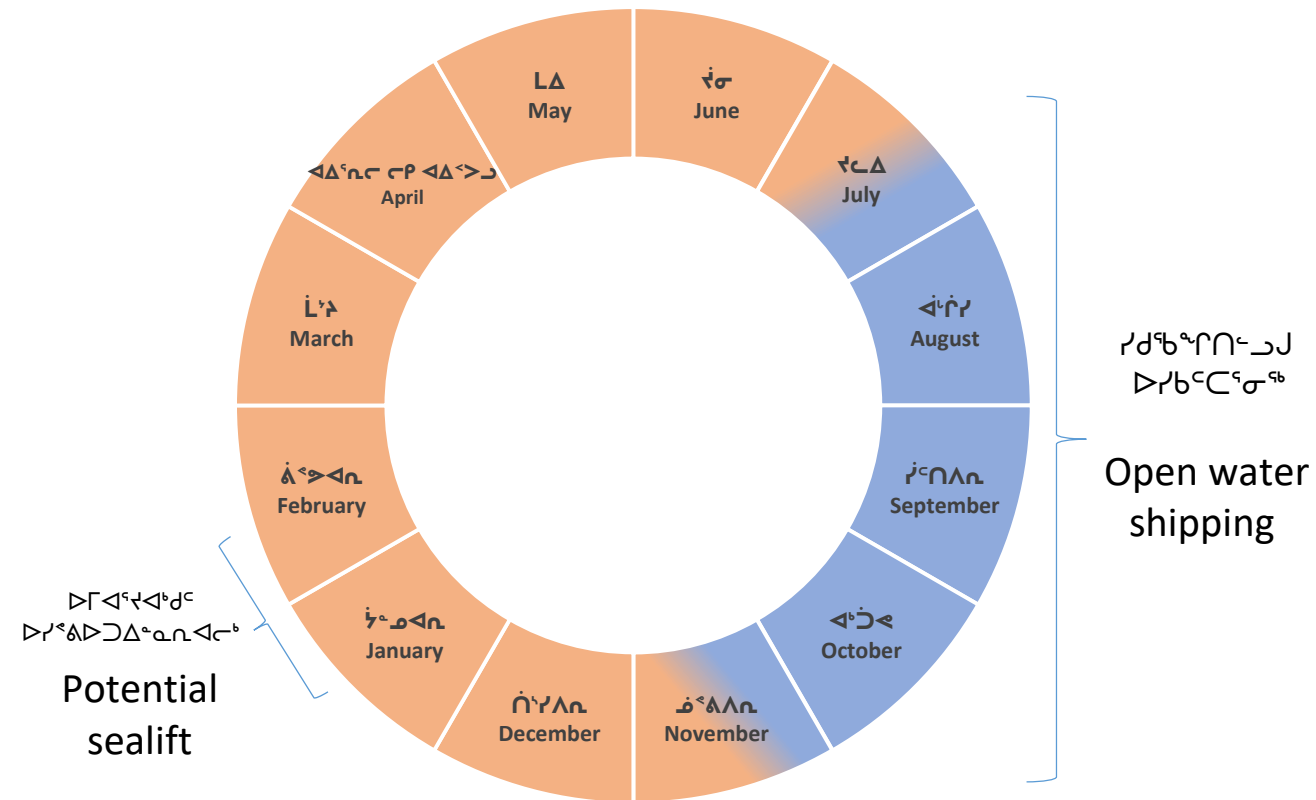


ΔΙΥΨΕΥΣΗ



Marine Shipping

▷ ႵႵႵႵႵ ႵႵႵႵႵ ႵႵႵႵႵ



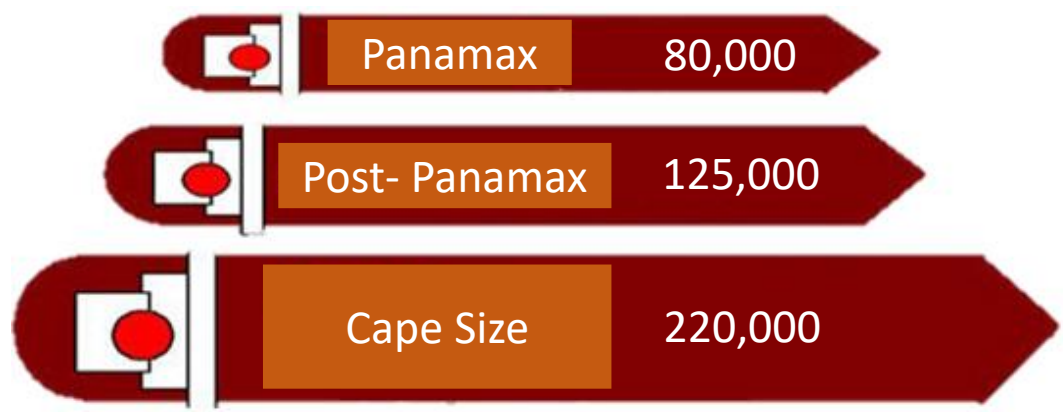
# Shipping schedule

- ሥራዎችን በጋራ ማስተካከል ይቻላል
- የአየር ንፍቀጥ መቆጣጠር
- የመሬት ተሳታፊነት ማረጋገጥ



# ᐅᐅᐅᐅᐅᐅ ᐅᐅᐅᐅᐅᐅ

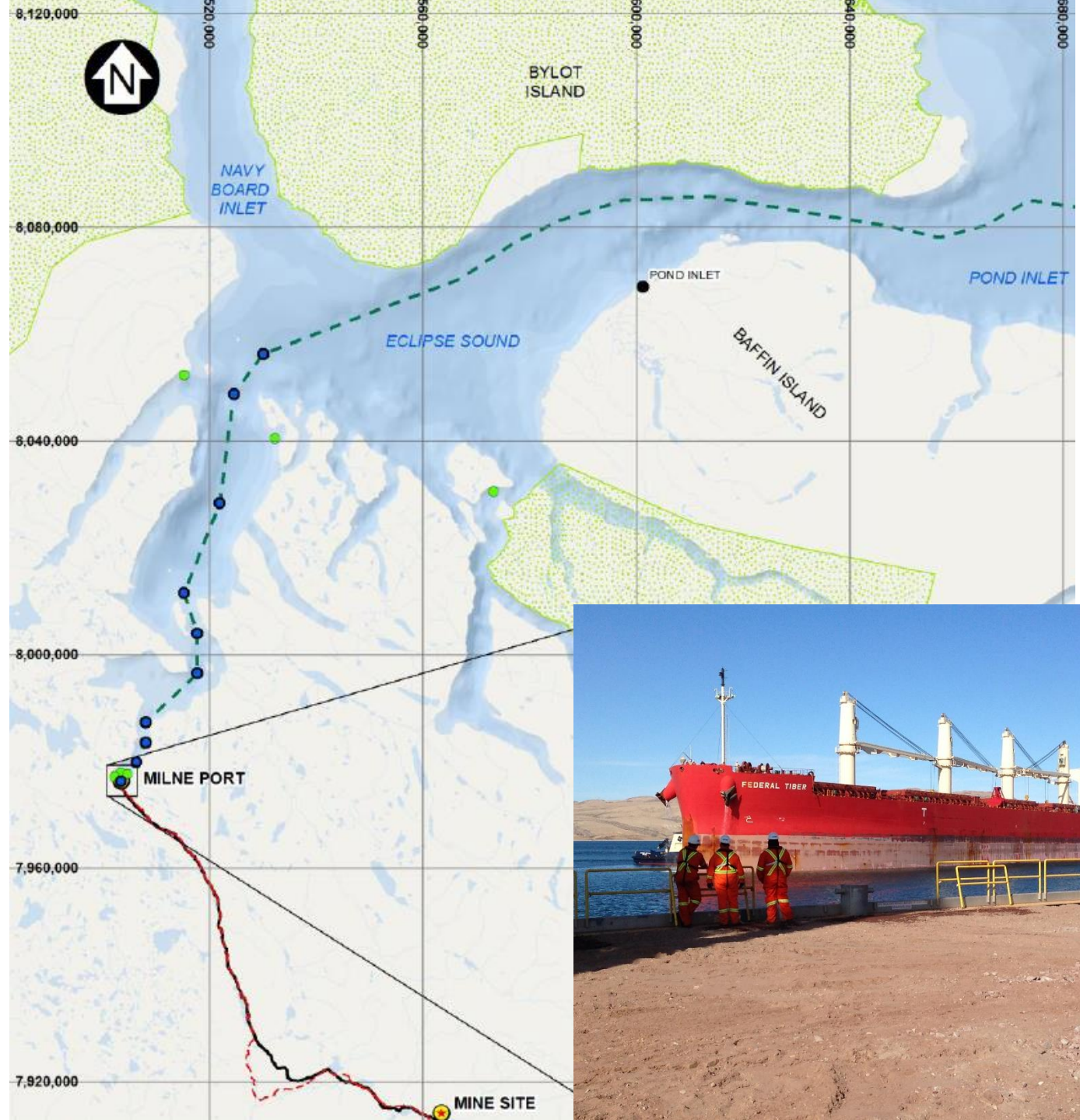
# Vessel size



Shipping route

▷Γ◁⁹↯◁⁹ ◁⁹δΠ⁹<sub>L</sub>  
CΔLΔc⁹<sub>L</sub>Δ⁹<sub>c</sub>σ◁⁹>⁹  
◁⁹↯⁹⁹⁹<sub>c</sub>⊃σ: Δ⁹⁹⁹⁹⁹<sub>c</sub>⊃σ  
Γ⁹ΠLCc▷⁹ Cγ▷⁹<sub>L</sub>Jᶜ

Shipping route will remain the same:  
route through eclipse sound

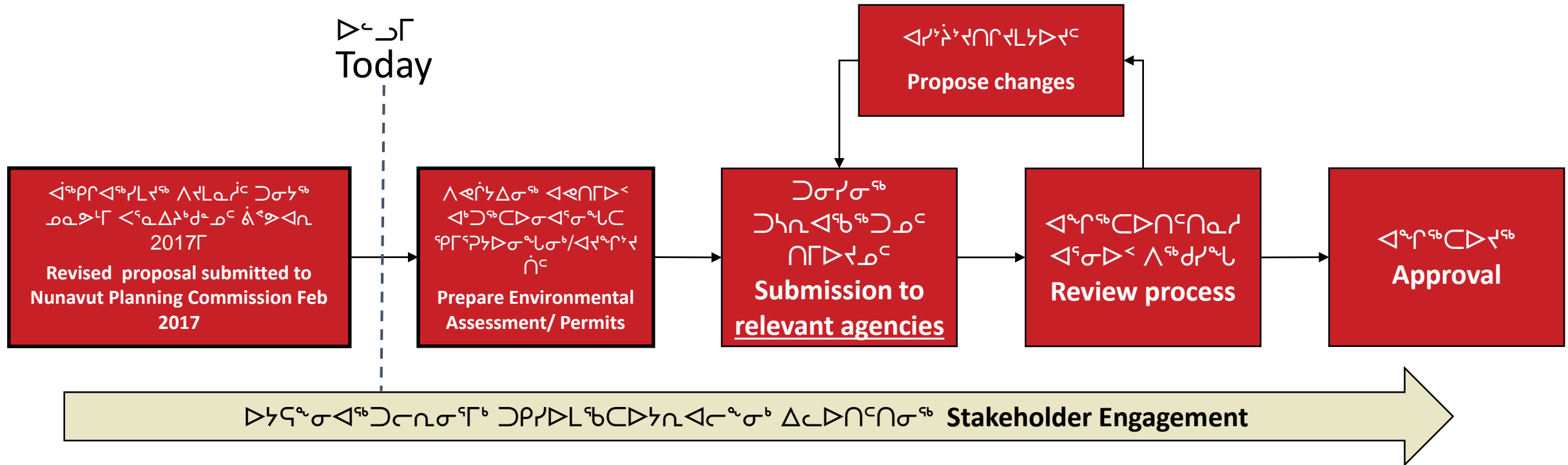




ᐃᓴᓯᕋᑦ ᑕᐅᔭᓂᓪᓗᒃ ᑎᓄᓲᓪᓗᒃ  
ᐃᓴᕋᑦ ᓱᕆᓚᓂᓪᓗᒃ

# Approval Process

# Phase 2 approval process





መደምደሞ ልዩነት

Community Benefits



Δεῖν

1. ከተሰጡት የፍርድ ቤቶች ጋር የሚመጡትን የፍርድ ቤቶች ዝርዝር ይጻፉ
2. ለፍርድ ቤቱ የሚገኝ የፍርድ ቤቱ ስም ይጻፉ
3. የፍርድ ቤቱ ስም ለፍርድ ቤቱ ስም ይጻፉ
4. ለፍርድ ቤቱ የሚገኝ የፍርድ ቤቱ ስም ይጻፉ



# Benefits

1. Continued Economic Input to North Baffin
2. Overall increase in employment
3. Commitment to Inuit training
4. Opportunities for Inuit firms







# Economic Inputs to North Baffin

- In addition, the IIBA also provides for Inuit financial participation in the Project through Advance Payments and Royalties
- Baffinland contributed to 24% of the revenue from fuel taxation to the Government of Nunavut
- Baffinland contributes directly to the communities through scholarships, donations to community events and activities, time of employees to engage in community initiatives and more broadly increased access to region



Δ<sub>μ</sub>Δ<sup>c</sup> Δ<sup>qb</sup>b<sub>q</sub>Δ<sup>qb</sup>Δ<sup>c</sup>

\*2016-፲, ለሌላ < ኃይል \$8 ፒርብሎች  
የዓለም ኃይልን በከፊል ይጨምራል።  
አስተማማኝ የኃይል አቅርቦት ይፈጠራል።

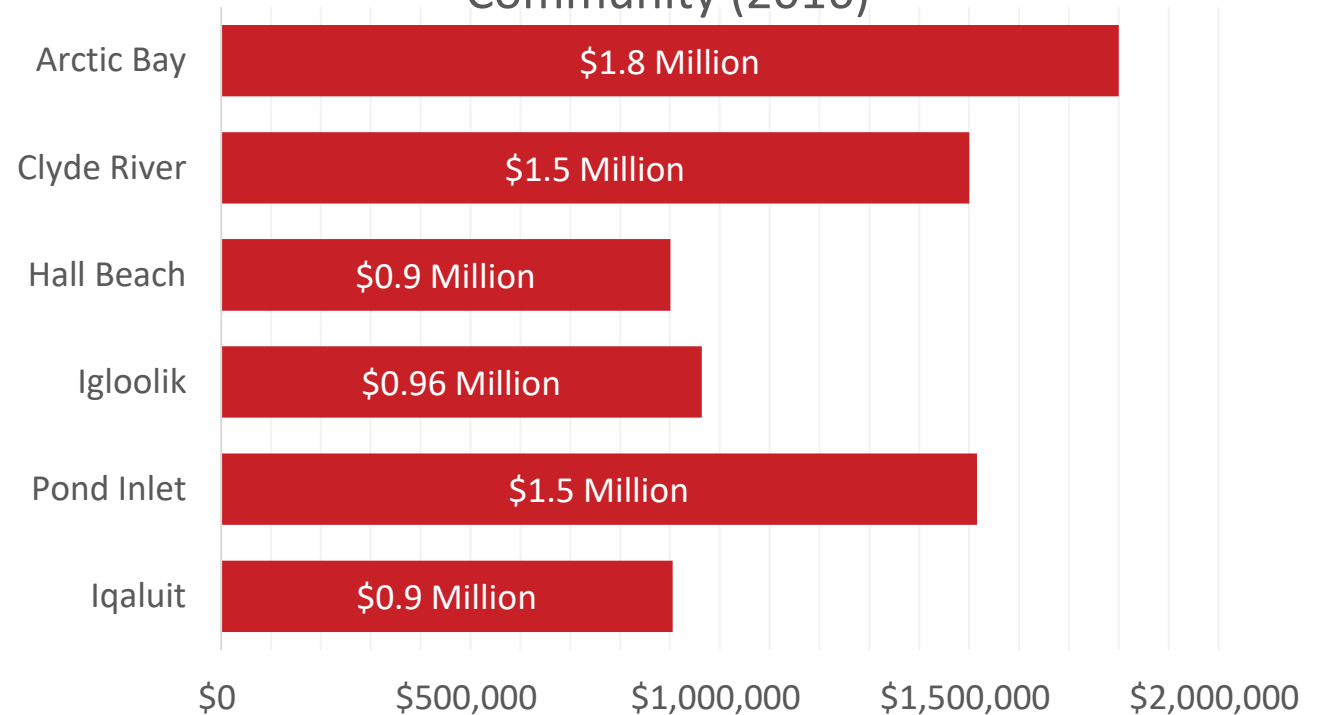
\*In 2016, nearly \$8 million was spent on Baffinland's Inuit employee payroll

[illegible]

\*In 2016, 16.3% of the total number of hours worked on the Project were completed by 97 Inuit Baffinland employees and 65 Inuit Contract employees (162 Inuit employees)

# Inuit employment

## Baffinland Inuit Employee Payroll, by Community (2016)









## Δμμϑ ρϑΓσϑϑϑϑϑϑ Δϑϑσϑϑ

## Inuit firm involvement

Δμμϑ ρϑΓσϑϑϑϑϑϑ ϑϑϑϑ  
ϑσϑϑϑϑϑϑ 2016-Γ  
ϑϑϑϑϑϑϑϑ \$64.4 Γϑϑϑ.

The total value of contracts  
awarded to Inuit Firms in 2016  
was \$64.4 million.

Δμμϑ ρϑΓσϑϑϑϑϑϑ ϑϑϑϑ  
ϑσϑϑϑϑϑϑ ϑϑϑϑϑϑϑϑ 38%  
->ϑΓϑ 2017 ϑϑϑϑϑϑ ϑϑϑϑ  
ϑϑϑϑϑϑ

The percentage of contracts  
awarded to Inuit Firms has  
increased to 38% in Q1 2017

2016

2017

2018



# Major contracts with Inuit firms



# What Now?

- † We need your support!
- † We need your feedback:
  - Comment Cards
  - Verbal Comments
  - Facebook
    - (<https://www.facebook.com/BaffinlandIronMines>)
  - Baffinland Community Liaison Officer
- † Next Steps:
  - Nunavut Planning Commission - Land Use Plan
  - Nunavut Impact Review Board – Environmental Impact Statement
  - Nunavut Water Board – Type A Water Licence
  - Canadian Transportation Agency – Rail Permit
- † Schedule:
  - Submit for NIRB approval September 2017 (tentative)
  - Start construction August 2018 (tentative)



A wide-angle landscape photograph. In the foreground, there's a steep, rocky slope covered with light-colored, layered rock fragments. A prominent vertical rock column stands on the right side of the slope. Beyond the rocks, a calm, bright blue lake stretches across the middle ground. The far shore is a flat, brownish-green plain leading up to dark, rolling hills or low mountains. Some peaks in the distance are covered in patches of white snow. The sky above is filled with soft, grey clouds.

Questions?

37



# Questions?