



◀^ᶜ⊲⊳⊳: ◀^{ᶜᵇ}⊲⊳◀^{ᶜᵇ}⊲⊳⊳σ^ᶜ⊲ 3

Pond Inlet | Dec. 4-5, 2017

Γ^cΠLC^c^b | **ΠΖΛΠ** 4-5, 2017

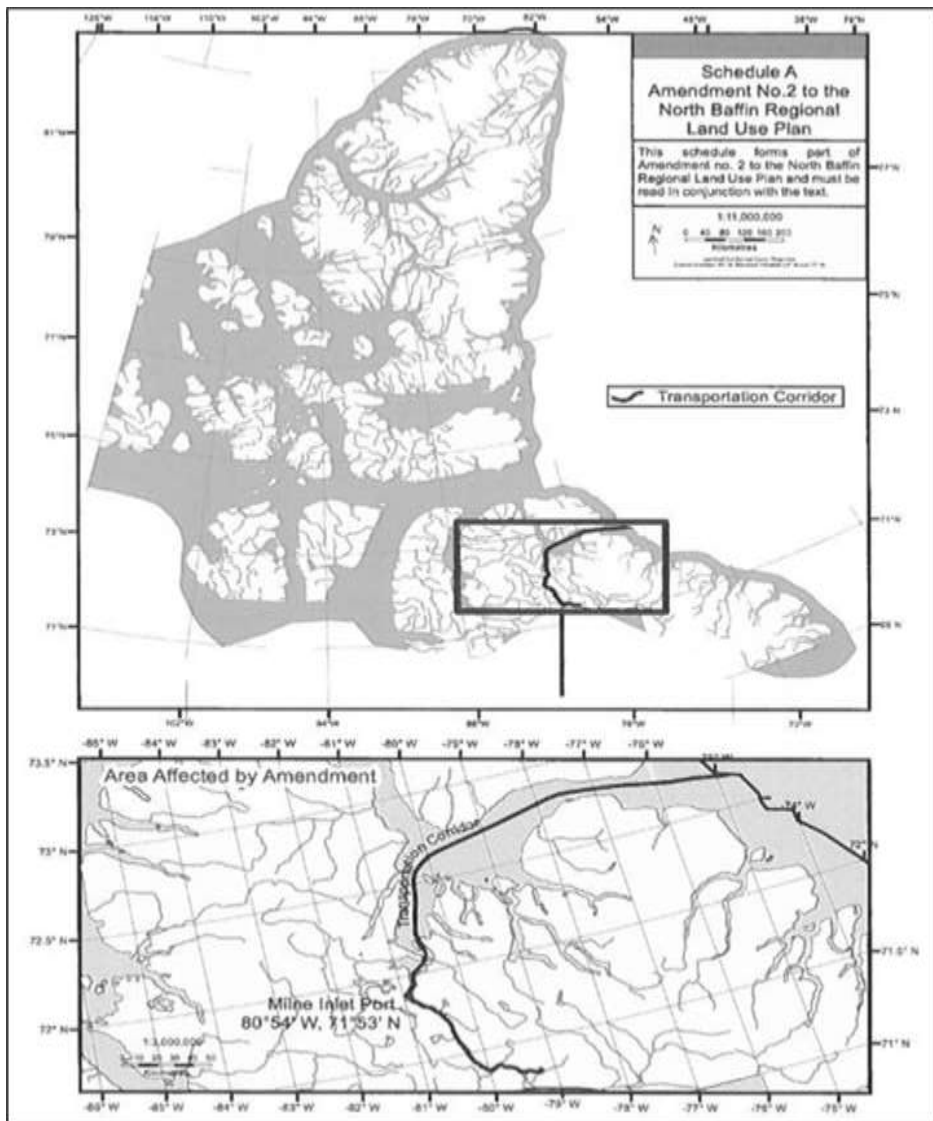
ԱՐԱՐՈՒ

Introduction

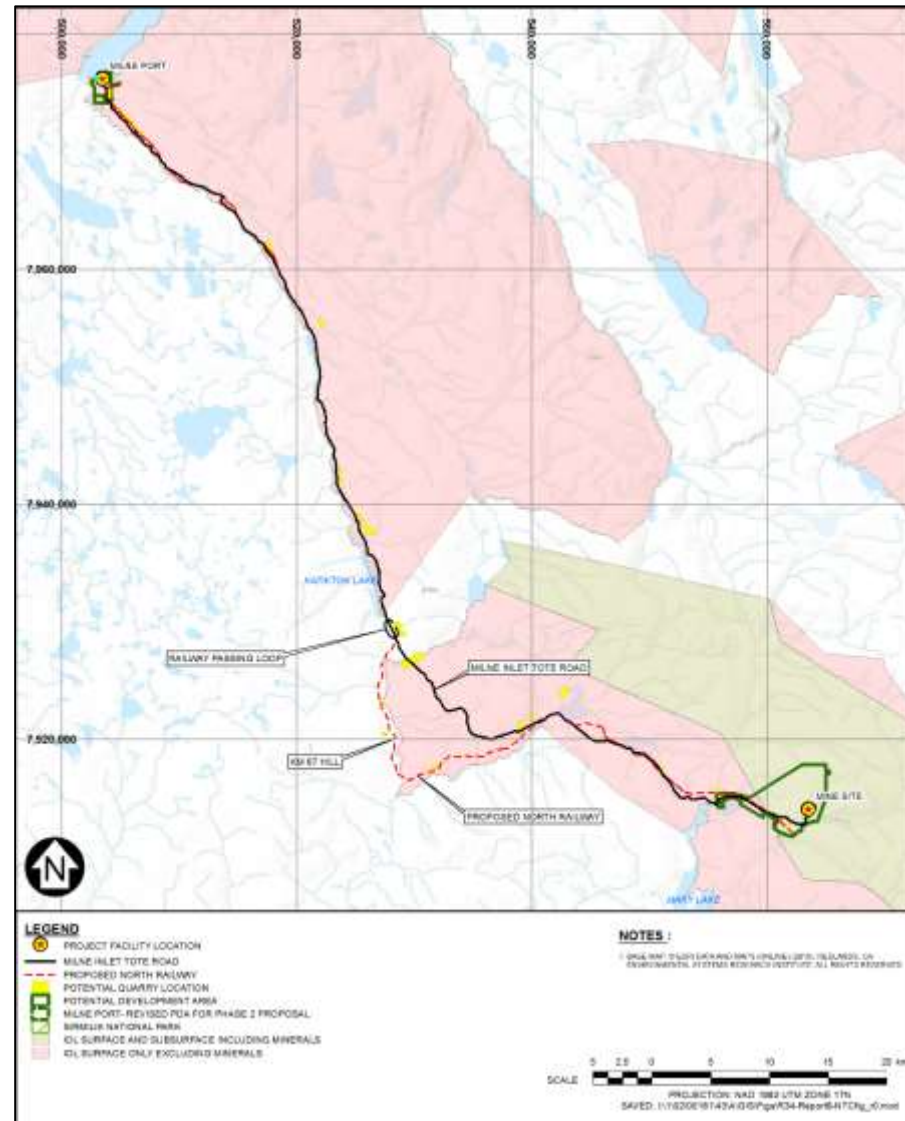
1. **ሰላም ስለሚገኝበት ሁሉም ሰላም**
 2. **ሰላም ስለሚገኝበት ሁሉም ሰላም**
 3. **ሰላም ስለሚገኝበት ሁሉም ሰላም**
 4. **ሰላም ስለሚገኝበት ሁሉም ሰላም**
 5. **ሰላም ስለሚገኝበት ሁሉም ሰላም**
 6. **ሰላም ስለሚገኝበት ሁሉም ሰላም**
 7. **ሰላም ስለሚገኝበት ሁሉም ሰላም**
 8. **ሰላም ስለሚገኝበት ሁሉም ሰላም**
 9. **ሰላም ስለሚገኝበት ሁሉም ሰላም**
 10. **ሰላም ስለሚገኝበት ሁሉም ሰላም**

- 
- The background image shows a group of miners in a dimly lit underground tunnel. They are wearing orange safety gear, including helmets and high-visibility vests. Some miners are standing in the background, while others are in the foreground, partially obscured by the text. The tunnel walls are dark and rocky, and there are some equipment and structures visible in the distance. The overall atmosphere is industrial and focused.
- ‡ The Baffinland Mary River Mine has been in operation for three years**
 - ‡ To continue to provide benefits to the communities Baffinland must increase production and lower costs**
 - ‡ To accomplish this a railway must be constructed within the existing Transportation Corridor**

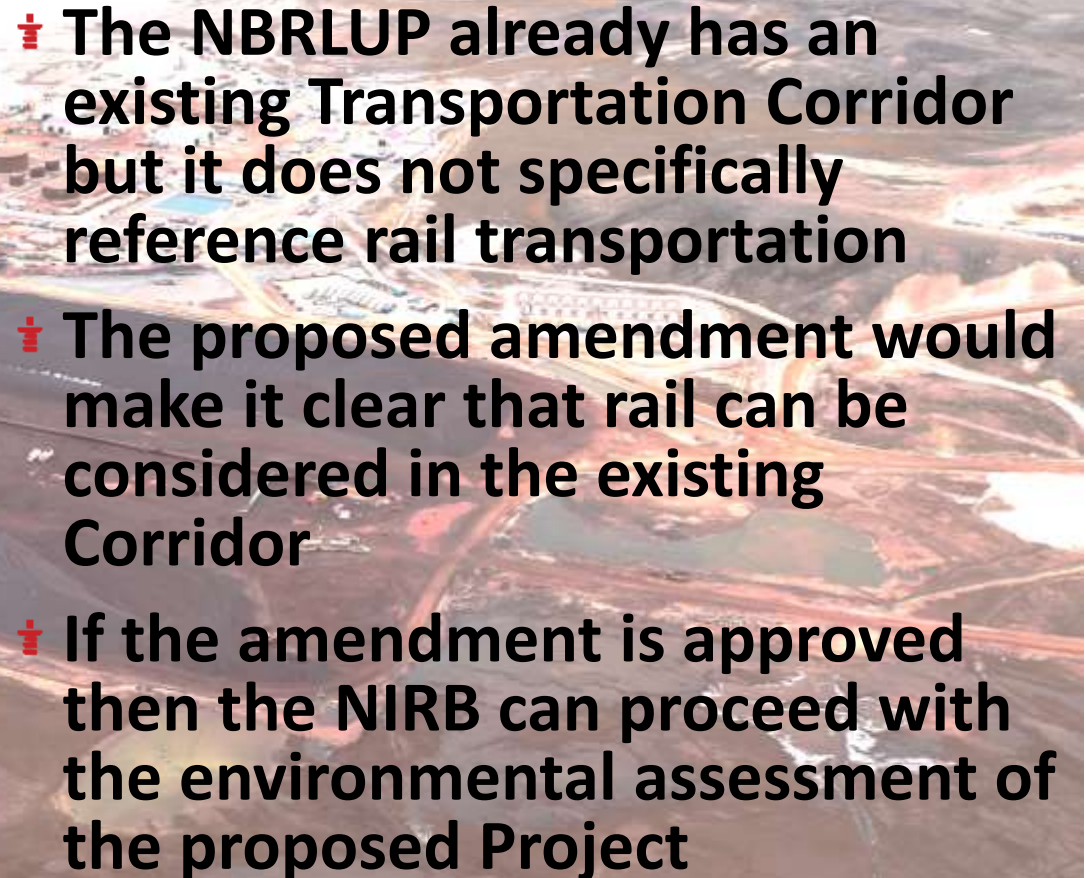
▶^a ⚡^b ⚡^c ⚡^d ⚡^e ⚡^f ⚡^g ⚡^h ⚡ⁱ ⚡^j ⚡^k ⚡^l ⚡^m ⚡ⁿ ⚡^o ⚡^p ⚡^q ⚡^r ⚡^s ⚡^t ⚡^u ⚡^v ⚡^w ⚡^x ⚡^y ⚡^z ⚡^{aa} ⚡^{ab} ⚡^{ac} ⚡^{ad} ⚡^{ae} ⚡^{af} ⚡^{ag} ⚡^{ah} ⚡^{ai} ⚡^{aj} ⚡^{ak} ⚡^{al} ⚡^{am} ⚡^{an} ⚡^{ao} ⚡^{ap} ⚡^{aq} ⚡^{ar} ⚡^{as} ⚡^{at} ⚡^{au} ⚡^{av} ⚡^{aw} ⚡^{ax} ⚡^{ay} ⚡^{az} ⚡^{ba} ⚡^{bb} ⚡^{bc} ⚡^{bd} ⚡^{be} ⚡^{bf} ⚡^{bg} ⚡^{bh} ⚡^{bi} ⚡^{bj} ⚡^{bk} ⚡^{bl} ⚡^{bm} ⚡^{bn} ⚡^{bo} ⚡^{bp} ⚡^{bq} ⚡^{br} ⚡^{bs} ⚡^{bt} ⚡^{bu} ⚡^{bv} ⚡^{bw} ⚡^{bx} ⚡^{by} ⚡^{bz} ⚡^{ca} ⚡^{cb} ⚡^{cc} ⚡^{cd} ⚡^{ce} ⚡^{cf} ⚡^{cg} ⚡^{ch} ⚡^{ci} ⚡^{cj} ⚡^{ck} ⚡^{cl} ⚡^{cm} ⚡^{cn} ⚡^{co} ⚡^{cp} ⚡^{cq} ⚡^{cr} ⚡^{cs} ⚡^{ct} ⚡^{cu} ⚡^{cv} ⚡^{cw} ⚡^{cx} ⚡^{cy} ⚡^{cz} ⚡^{da} ⚡^{db} ⚡^{dc} ⚡^{dd} ⚡^{de} ⚡^{df} ⚡^{dg} ⚡^{dh} ⚡^{di} ⚡^{dj} ⚡^{dk} ⚡^{dl} ⚡^{dm} ⚡^{dn} ⚡^{do} ⚡^{dp} ⚡^{dq} ⚡^{dr} ⚡^{ds} ⚡^{dt} ⚡^{du} ⚡^{dv} ⚡^{dw} ⚡^{dx} ⚡^{dy} ⚡^{dz} ⚡^{ea} ⚡^{eb} ⚡^{ec} ⚡^{ed} ⚡^{ee} ⚡^{ef} ⚡^{eg} ⚡^{eh} ⚡^{ei} ⚡^{ej} ⚡^{ek} ⚡^{el} ⚡^{em} ⚡^{en} ⚡^{eo} ⚡^{ep} ⚡^{eq} ⚡^{er} ⚡^{es} ⚡^{et} ⚡^{eu} ⚡^{ev} ⚡^{ew} ⚡^{ex} ⚡^{ey} ⚡^{ez} ⚡^{fa} ⚡^{fb} ⚡^{fc} ⚡^{fd} ⚡^{fe} ⚡^{ff} ⚡^{fg} ⚡^{fh} ⚡^{fi} ⚡^{fj} ⚡^{fk} ⚡^{fl} ⚡^{fm} ⚡^{fn} ⚡^{fo} ⚡^{fp} ⚡^{fq} ⚡^{fr} ⚡^{fs} ⚡^{ft} ⚡^{fu} ⚡^{fv} ⚡^{fw} ⚡^{fx} ⚡^{fy} ⚡^{fz} ⚡^{ga} ⚡^{gb} ⚡^{gc} ⚡^{gd} ⚡^{ge} ⚡^{gf} ⚡^{gg} ⚡^{gh} ⚡^{gi} ⚡^{gj} ⚡^{gk} ⚡^{gl} ⚡^{gm} ⚡^{gn} ⚡^{go} ⚡^{gp} ⚡^{gq} ⚡^{gr} ⚡^{gs} ⚡^{gt} ⚡^{gu} ⚡^{gv} ⚡^{gw} ⚡^{gx} ⚡^{gy} ⚡^{gz} ⚡^{ha} ⚡^{hb} ⚡^{hc} ⚡^{hd} ⚡^{he} ⚡^{hf} ⚡^{hg} ⚡^{hh} ⚡^{hi} ⚡^{hj} ⚡^{hk} ⚡^{hl} ⚡^{hm} ⚡^{hn} ⚡^{ho} ⚡^{hp} ⚡^{hq} ⚡^{hr} ⚡^{hs} ⚡^{ht} ⚡^{hu} ⚡^{hv} ⚡^{hw} ⚡^{hx} ⚡^{hy} ⚡^{hz} ⚡^{ia} ⚡^{ib} ⚡^{ic} ⚡^{id} ⚡^{ie} ⚡^{if} ⚡^{ig} ⚡^{ih} ⚡ⁱⁱ ⚡^{ij} ⚡^{ik} ⚡^{il} ⚡^{im} ⚡ⁱⁿ ⚡^{io} ⚡^{ip} ⚡^{iq} ⚡^{ir} ⚡^{is} ⚡^{it} ⚡^{iu} ⚡^{iv} ⚡^{iw} ⚡^{ix} ⚡^{iy} ⚡^{iz} ⚡^{ja} ⚡^{jb} ⚡^{jc} ⚡^{jd} ⚡^{je} ⚡^{jf} ⚡^{jj} ⚡^{jh} ⚡^{ji} ⚡^{jj} ⚡^{jk} ⚡^{jl} ⚡^{jm} ⚡^{jn} ⚡^{jo} ⚡^{jp} ⚡^{jq} ⚡^{jr} ⚡^{js} ⚡^{jt} ⚡^{ju} ⚡^{jv} ⚡^{jw} ⚡^{jx} ⚡^{ji} ⚡^{jj} ⚡^{jk} ⚡^{jl} ⚡^{jm} ⚡^{jn} ⚡^{jo} ⚡^{jp} ⚡^{jq} ⚡^{jr} ⚡^{js} ⚡^{jt} ⚡^{ju} ⚡^{jv} ⚡^{jw} ⚡^{jx} ⚡^{ky} ⚡^{ka} ⚡^{kb} ⚡^{kc} ⚡^{kd} ⚡^{ke} ⚡^{kf} ⚡^{kg} ⚡^{kh} ⚡^{ki} ⚡^{kj} ⚡^{kk} ⚡^{kl} ⚡^{km} ⚡^{kn} ⚡^{ko} ⚡^{kp} ⚡^{kq} ⚡^{kr} ⚡^{ks} ⚡^{kt} ⚡^{ku} ⚡^{kv} ⚡^{kw} ⚡^{kx} ⚡^{ky} ⚡^{kz} ⚡^{la} ⚡^{lb} ⚡^{lc} ⚡^{ld} ⚡^{le} ⚡^{lf} ⚡^{lg} ⚡^{lh} ⚡^{li} ⚡^{lj} ⚡^{lk} ⚡^{ll} ⚡^{lm} ⚡^{ln} ⚡^{lo} ⚡^{lp} ⚡^{lq} ⚡^{lr} ⚡^{ls} ⚡^{lt} ⚡^{lu} ⚡^{lv} ⚡^{lw} ⚡^{lx} ⚡^{ly} ⚡^{lz} ⚡^{ma} ⚡^{mb} ⚡^{mc} ⚡^{md} ⚡^{me} ⚡^{mf} ⚡^{mg} ⚡^{mh} ⚡^{mi} ⚡^{mj} ⚡^{mk} ⚡^{ml} ⚡^{mm} ⚡^{mn} ⚡^{mo} ⚡^{mp} ⚡^{mq} ⚡^{mr} ⚡^{ms} ⚡^{mt} ⚡^{mu} ⚡^{mv} ⚡^{mw} ⚡^{mx} ⚡^{my} ⚡^{mz} ⚡^{na} ⚡^{nb} ⚡^{nc} ⚡nd ⚡^{ne} ⚡^{nf} ⚡^{ng} ⚡^{nh} ⚡ⁿⁱ ⚡^{nj} ⚡^{nk} ⚡^{nl} ⚡^{nm} ⚡ⁿⁿ ⚡^{no} ⚡^{np} ⚡^{nq} ⚡^{nr} ⚡^{ns} ⚡^{nt} ⚡^{nu} ⚡^{nv} ⚡^{nw} ⚡^{nx} ⚡^{ny} ⚡^{nz} ⚡^{oa} ⚡^{ob} ⚡^{oc} ⚡^{od} ⚡^{oe} ⚡^{of}



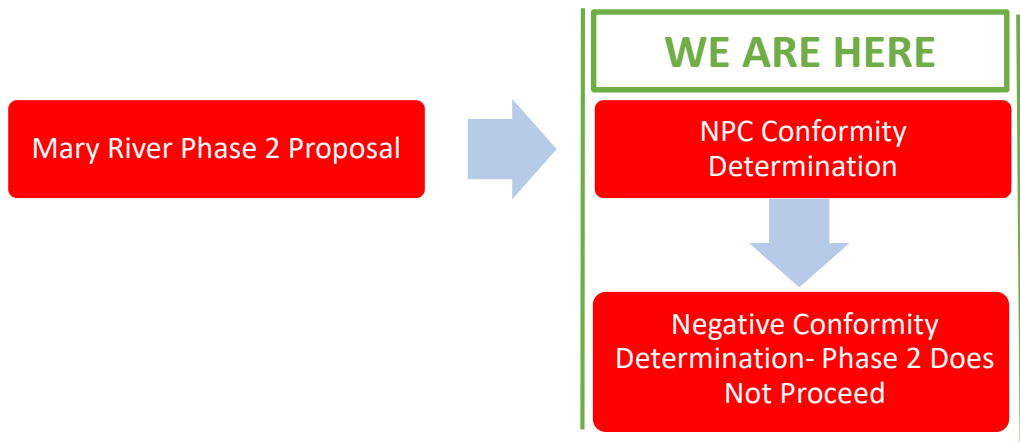
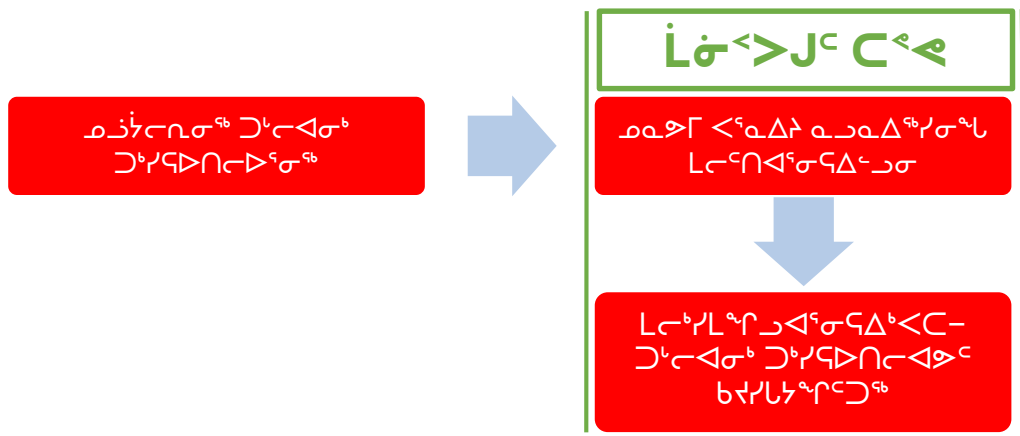
ᐅᑦᓴᓂᑦ ᐃᑦᓴᓂᑦ ᐃᒻᒪᑦ ᓄᓇᑦᐅᑎᐅᑦᑦ ᐃᑦᓴᓂᑦᑎᑦᓴᓴ



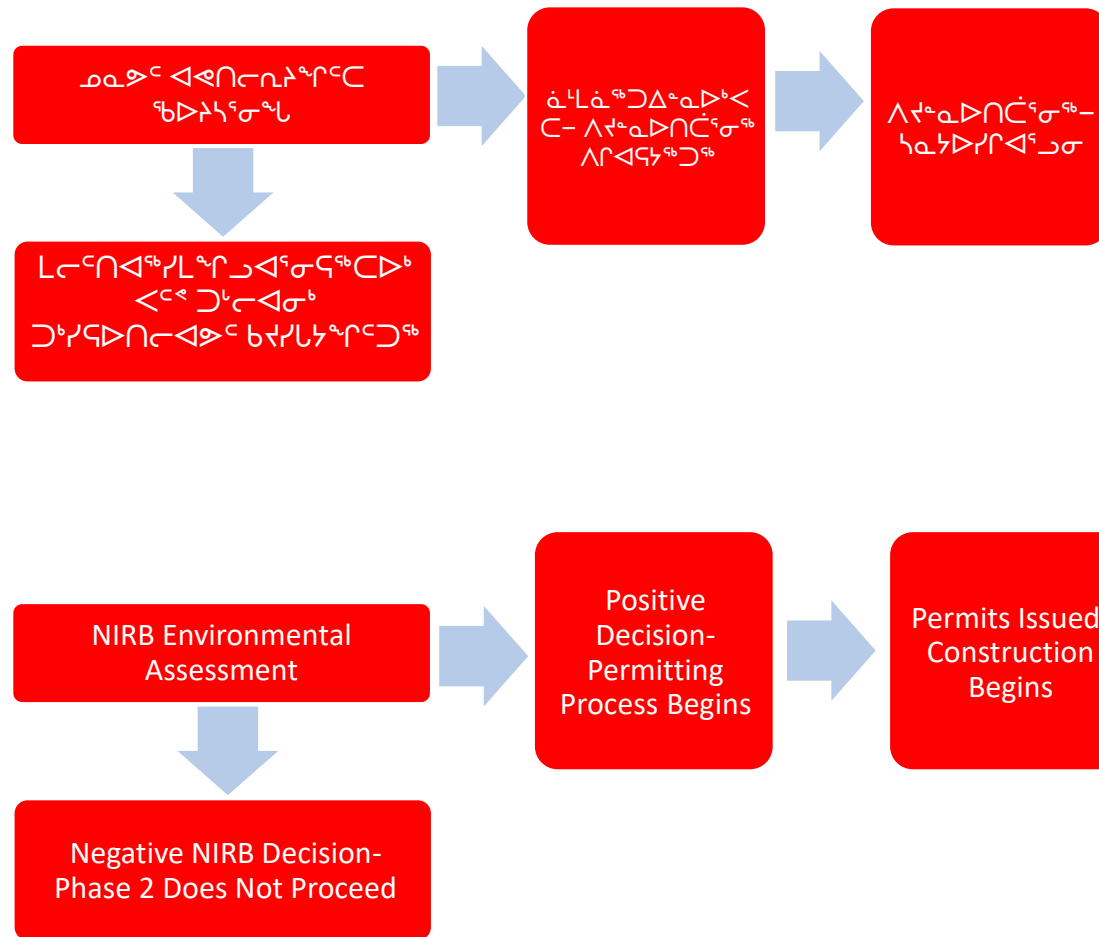
The Proposed Amendment

- 
- † The NBRLUP already has an existing Transportation Corridor but it does not specifically reference rail transportation
 - † The proposed amendment would make it clear that rail can be considered in the existing Corridor
 - † If the amendment is approved then the NLRB can proceed with the environmental assessment of the proposed Project

Δ^αΓ^εΓσ₂σ₁Δ^{ε_b}Γ^{α₂}Γ



The Process



**Consistent with NLCA,
NuPPA and NPC**

- † The Proposed Amendment will not interfere with Inuit Rights**
- † The process for the amendment meets the requirements of NuPPA**
- † It is in line with the broad planning policies, objectives and goals of NPC**

**Consistent with NLCA,
NuPPA and NPC**

- † The Proposed Amendment will not interfere with Inuit Rights**
- † The process for the amendment meets the requirements of NuPPA**
- † It is in line with the broad planning policies, objectives and goals of NPC**

- Consistent with NLCA,
NuPPA and NPC**

- † The Proposed Amendment will not interfere with Inuit Rights**
 - † The process for the amendment meets the requirements of NuPPA**
 - † It is in line with the broad planning policies, objectives and goals of NPC**

- Consistent with NLCA,
NuPPA and NPC**

- † The Proposed Amendment will not interfere with Inuit Rights**
 - † The process for the amendment meets the requirements of NuPPA**
 - † It is in line with the broad planning policies, objectives and goals of NPC**

כ"כ חגגנו את חג המולד

Caribou Protection Measures

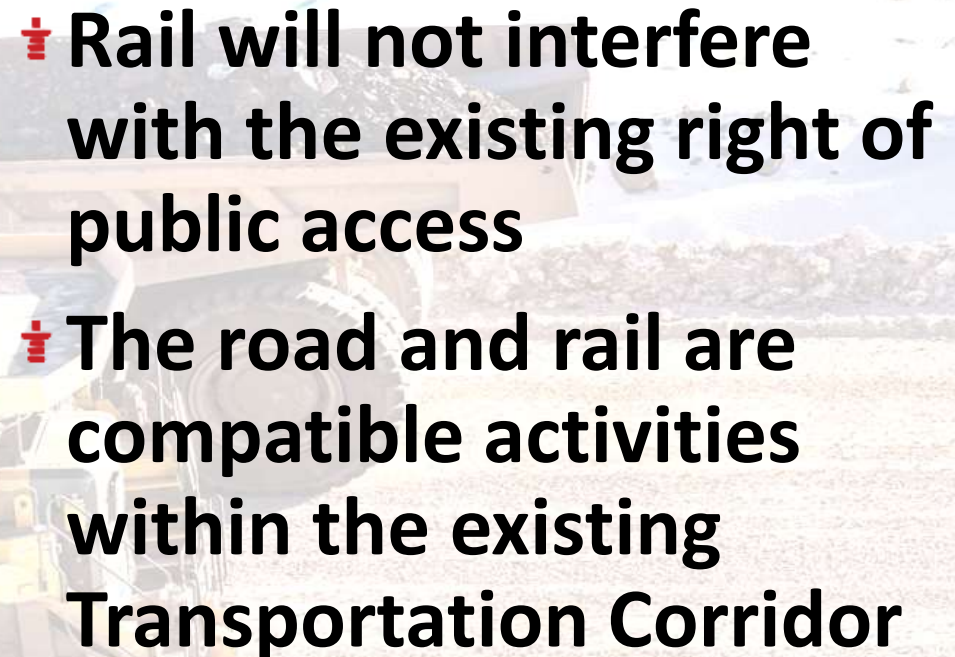
- ከኃይለማርያም ሕዝብ አዲስ አበባ
 ልማት ዘርፍ ልማት ልማት
 ልማት ልማት ልማት
 ልማት ልማት ልማት

- † The protection measures in the NBRLUP are sufficient for the Proposed Amendment**
- † Baffinland will continue to comply with the existing measures**
- † Additional protection measures will be developed as a result of the NIRB process**

Transportation Corridors

- ✚ **Multi-modal transportation corridors are considered in the draft Nunavut Land Use Plan**
- ✚ **This is consistent with the broad planning policies, objectives and goals of the NPC**
- ✚ **10 km corridor width as outlined in the Draft Nunavut Land Use Plan safely encompasses all components described in the Project Proposal**

Use of Existing Corridor

- 
- ✚ Rail will not interfere with the existing right of public access**
 - ✚ The road and rail are compatible activities within the existing Transportation Corridor**

Summary

- ✚ Baffinland needs to increase production and safety by using rail transportation to achieve a more sustainable project**
- ✚ Baffinland wants to continue to engage communities to ensure the Mary River Mine is successful in providing benefits to the North Baffin communities**
- ✚ Thank you to all participants who have shared their thoughtful comments**

የግልጽ ምርመራ

Thank you