

Schedule B3 Nunavut Land Use Plan Marine Valued Components

Floe Edges
VEC

Valued Ecosystem Components

VSEC

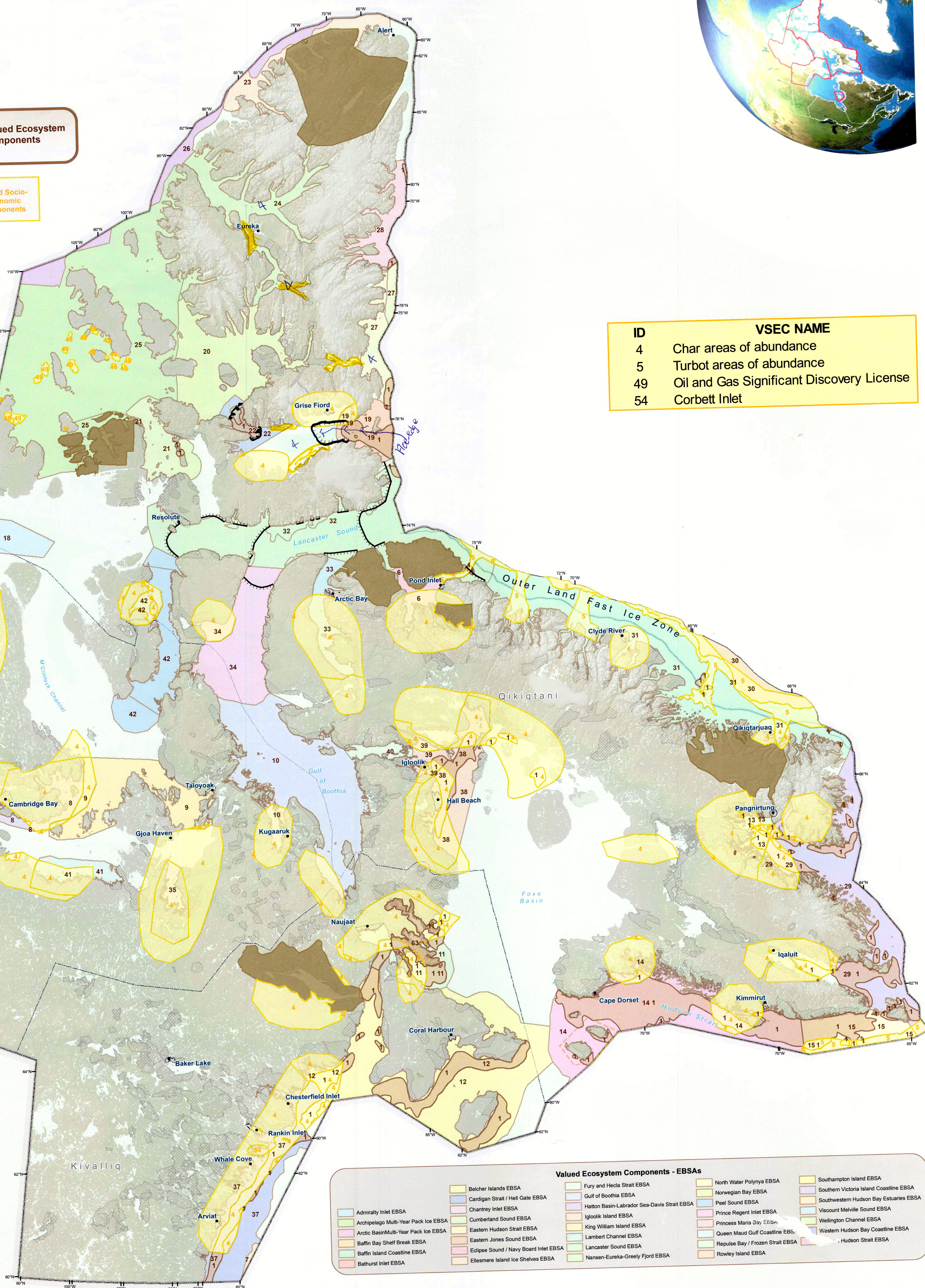
Valued Socio-Economic Components

Administrative Boundaries
Area of Equal Use and Occupancy
Nunavut Settlement Area Boundary
Inuit Owned Lands (Surface and Subsurface including minerals)
Inuit Owned Lands (Surface excluding minerals)
Established Parks (Land Use Plan does not apply)

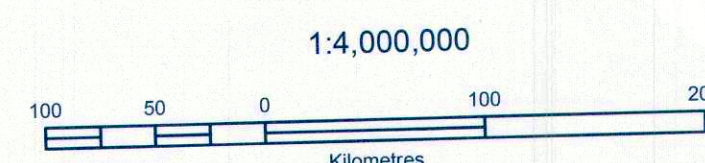
ID	VSEC NAME
4	Char areas of abundance
5	Turbot areas of abundance
49	Oil and Gas Significant Discovery License
54	Corbett Inlet



ID	VEC NAME
1	Polynyas
3	Cod Lake
6	Eclipse Sound / Navy Board Inlet EBSA
7	Southwestern Hudson Bay Estuaries EBSA
8	Southern Victoria Island Coastline EBSA
9	King William Island EBSA
10	Gulf of Boothia EBSA
11	Repulse Bay / Frozen Strait EBSA
12	Southampton Island EBSA
13	Cumberland Sound EBSA
14	Western Hudson Strait EBSA
15	Eastern Hudson Strait EBSA
16	Belcher Islands EBSA
17	Lambert Channel EBSA
18	Viscount Melville Sound EBSA
19	Eastern Jones Sound EBSA
20	Norwegian Bay EBSA
21	Wellington Channel EBSA
22	Cardigan Strait / Hell Gate EBSA
23	Ellesmere Island Ice Shelves EBSA
24	Nansen-Eureka-Greely Fjord EBSA
25	Archipelago Multi-Year Pack Ice EBSA
26	Arctic Basin Multi-Year Pack Ice EBSA
27	North Water Polynya EBSA
28	Princess Maria Bay EBSA
29	Hatton Basin-Labrador Sea-Davis Strait EBSA
30	Baffin Bay Shelf Break EBSA
31	Baffin Island Coastline EBSA
32	Lancaster Sound EBSA
33	Admiralty Inlet EBSA
34	Prince Regent Inlet EBSA
35	Chantry Inlet EBSA
36	Bathurst Inlet EBSA
37	Western Hudson Bay Coastline EBSA
38	Rowley Island EBSA
39	Igloolik Island EBSA
40	Fury and Hecla Strait EBSA
41	Queen Maud Gulf Coastline EBSA
63	Key Bird Habitat Site - Frozen Strait

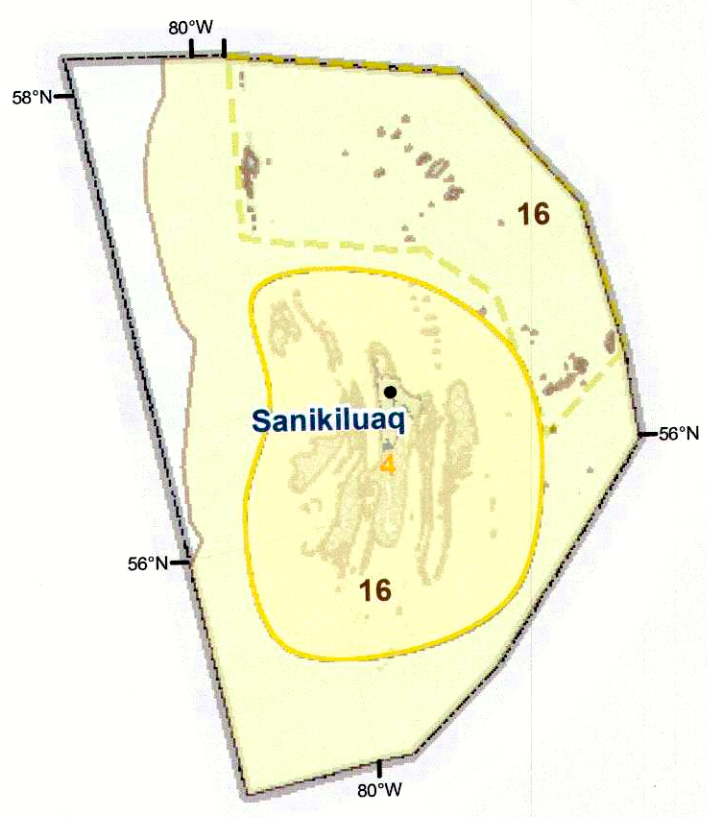


Valued Ecosystem Components - EBSAs		
Admiralty Inlet EBSA	Belcher Islands EBSA	Fury and Hecla Strait EBSA
Archipelago Multi-Year Pack Ice EBSA	Cardigan Strait / Hell Gate EBSA	Gulf of Boothia EBSA
Arctic Basin Multi-Year Pack Ice EBSA	Chantry Inlet EBSA	Hatton Basin-Labrador Sea-Davis Strait EBSA
Baffin Bay Shelf Break EBSA	Cumberland Sound EBSA	Igloolik Island EBSA
Baffin Island Coastline EBSA	Eastern Hudson Strait EBSA	King William Island EBSA
Bathurst Inlet EBSA	Ellesmere Island Ice Shelves EBSA	Lambert Channel EBSA
		Lancaster Sound EBSA
		Nansen-Eureka-Greely Fjord EBSA
		North Water Polynya EBSA
		Norwegian Bay EBSA
		Peel Sound EBSA
		Prince Regent Inlet EBSA
		Princess Maria Bay EBSA
		Queen Maud Gulf Coastline EBSA
		Repulse Bay / Frozen Strait EBSA
		Rowley Island EBSA
		Southampton Island EBSA
		Southern Victoria Island Coastline EBSA
		Southwestern Hudson Bay Estuaries EBSA
		Viscount Melville Sound EBSA
		Wellington Channel EBSA
		Western Hudson Bay Coastline EBSA
		Hudson Strait EBSA



For Data Sources see Draft Nunavut Land Use Plan (DNLUP).
For Illustrative purposes only
Projection: Canada Lambert Conformal Conic, NAD83
North is up and follows gridlines
Date: 20 Jun 2016
Produced By: Nunavut Planning Commission

DRAFT



If a designation boundary appears to follow a geographic feature or property boundary, it follows that feature or boundary.