

Summary of Community Meetings on the
Draft Nunavut Land Use Plan
POND INLET
November 5-6, 2012



Nunavut Planning
Commission

Revised - August 2013

Contents

Introduction.....	3	Appendix 1: Open House	17
1.1 Context	3	Appendix 2: Elected Officials Meeting	18
1.2 Purpose.....	3	Appendix 3: Questions and Answers	19
1.3 Methodology.....	3	Appendix 4: Community Workshop Scanned Maps	20
1.4 Public Awareness	3	Appendix 5: Wrap Up Session	31
1.5 Community Population and Participation.....	3	Appendix 6: Follow-up Meeting	37
 Protecting and Sustaining the Environment	4		
2.1 Areas presented to participants.....	4		
2.2 Areas identified by participants	4		
2.3 Areas of importance to Protecting and Sustaining the Environment..	4		
 Encouraging Conservation Planning.....	6		
3.1 Areas presented to participants	6		
3.2 Areas identified by participants	6		
3.3 Areas of importance to Encouraging Conservation Planning	6		
 Building Healthier Communities	8		
4.1 Areas presented to participants.....	8		
4.2 Areas identified by participants	8		
4.3 Areas of importance to Building Healthier Communities	8		
 Encouraging Sustainable Economic Development.....	10		
5.1 Areas presented to participants.....	10		
5.2 Areas identified by participants	10		
5.3 Areas of importance to Encouraging Sustainable Economic Development	10		
 Mixed Use	12		
6.1 Areas identified in the Draft Plan	12		
6.2 Areas identified by participants	12		
 Overlapping Goals	15		
7.1 Areas identified for multiple goals	15		

Chapter 1: Introduction

1.1 Context

The Nunavut Planning Commission (NPC) is preparing a land use plan to guide and direct resource use and development in the Nunavut Settlement Area (NSA). As part of its efforts, the NPC is facilitating discussions in each Nunavut community on land use and resource management issues. Information that is obtained from these discussions will be used to inform decisions regarding the further development of the Nunavut Land Use Plan (NLUP).

1.2 Purpose

This report presents information obtained during the NPC's visit to the community of Pond Inlet. The purpose of the report is to inform decisions regarding the further development of the NLUP, ensuring that the plan reflects the priorities and values of residents.

It is important to note that the information contained in the Community Report will be considered in conjunction with all other feedback when revising the DNLUP.

1.3 Methodology

Information was presented to and received from participants in Pond Inlet in accordance with the Nunavut Planning Commission's Community Engagement Strategy (Engagement Strategy). The Engagement Strategy provides for the following methods for presenting and receiving information;

- **Open house;** information contained in the Draft Nunavut Land Use Plan (DNLUP) was presented on 7 multi lingual large format poster boards. Participants were encouraged to review the posters, ask questions and provide feedback. Comments and questions were recorded by NPC staff and are contained in Appendix 1.
- **Elected Officials Meeting;** The NPC Chairperson and NPC staff met with senior and elected officials in the community. The development process for the DNLUP, its content and next steps were presented.

Comments and questions were recorded during the session and are contained in Appendix 2.

- **Public Workshop;** A formal presentation of the Draft Plan content was provided to participants, including a slide overview of its content. Following the presentation, questions and comments were received from participants. The questions, comments and responses are contained in Appendix 3.

A mapping session followed the presentation of the Draft Plan. The mapping session involved discussions regarding the topics presented in the DNLUP and encouraged participants to identify additional areas and issues important for inclusion in a NLUP. Information received during this session was recorded by NPC staff and is included in Appendix 4.

- **Wrap Up Session;** Staff was available to discuss the areas identified during the mapping and identify any additional issues or areas of interest. Information received during this session was recorded by NPC staff and is included in Appendix 5.

Areas that participants identified during mapping sessions as important to a particular goal have, in the majority of cases, been included in this report as they were recorded. In instances where participants identified an area that was better suited to another goal, the area has been reclassified to the more suitable goal and has been verified as appropriate to do so by the Community.

A follow-up meeting was held on March 17, 2013 to review a draft version of this report with the Hamlet Council, Hunters and Trappers Organization, and Community Lands and Resource Committee. A summary of this meeting is included in Appendix 6.

1.4 Public Awareness

The NPC raised public awareness regarding its visit to Pond Inlet in accordance with the Engagement Strategy.

The DNLUP and supporting materials were mailed to the Mayor and Council of Pond Inlet, the Hunters and Trappers

Organizations (HTO) in September 2012. In addition, letters of invitation were sent to the Pond Inlet Mayor and Council and HTO in advance of the NPC's visit to advise of the meetings and to encourage participation. Follow up phone calls were also made.

Public notice of the various events was provided in the following ways:

- **Nunatsiaq News and Nunavut News/North;** notice of community meetings were posted in both newspapers a minimum of 45 days in advance.
- **Co-op cable TV;** notice of community meetings was run a minimum of 45 days in advance for one week and run again for no less than 14 days before the meetings.
- **Community radio;** notices were read by the hosts and a live interview with the Commission Chairperson was conducted.
- **Community bulletin boards;** notices were posted on bulletin boards around the community 45 days and again 14 days in advance of the meetings.
- **Community mail drop;** one page flyers that announced the meetings and their purpose were delivered to the post office in each community for all mail boxes that accept unaddressed ad-mail.
- **nunavut.ca;** the schedule of community visits, the Draft Plan, and all supporting information was available on the Commission's website.

1.5 Community Population and Participation

Pond Inlet is a community of approximately 1550 people (Statistics Canada. 2011 Census). It is located on the northern coast of Baffin Island (see Figure 1).

The Commission visited the community on November 5-6, 2012. All events occurred as scheduled. The sessions were attended as follows;

- **Elected Officials Meeting;** the Mayor and members of the Hamlet Council and HTO attended the elected officials meeting.
- **Open house;** approximately 45 people attended the open house to review the Draft Plan.
- **Public Workshop;** approximately 45 people attended the presentation of the DNLUP and facilitated mapping sessions. Information was recorded in three separate mapping groups.
- **Wrap Up Session;** approximately 10 people attended the wrap up session.

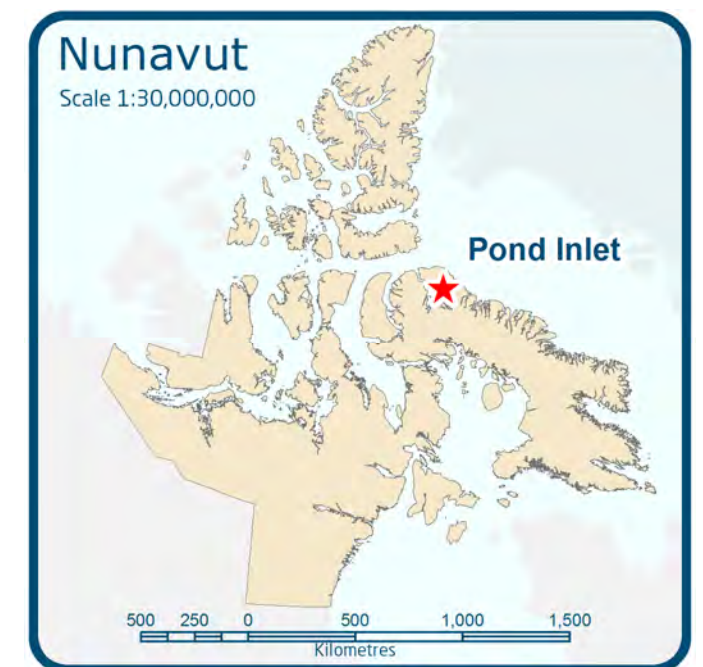


Figure 1. Location of Pond Inlet

Chapter 2: Protecting and Sustaining the Environment

Protecting and Sustaining the Environment was one of five topics presented to and discussed by participants during the Open House, Elected Officials Meeting, Public Workshop and Wrap up Session, collectively referred to in this document as information sharing and gathering sessions.

2.1 Areas presented to participants

During the information sharing and gathering sessions, participants were presented the following areas and issues as important to Protecting and Sustaining the Environment.

- Key bird habitat sites
- Caribou Habitat sites
- Atlantic Cod Lakes
- Cumulative Impacts
- Transboundary considerations
- Climate change

The importance of these issues and areas to Protecting and Sustaining the Environment was not disputed by participants during the information sharing and gathering sessions.

2.2 Areas identified by participants

Additional areas and issues were identified by participants as important to Protecting and Sustaining the Environment during the information sharing and gathering sessions. These additional areas are;

- Flow edge
- Marine mammals
- Caribou
- Hunting/camping areas
- Important bird areas

- Areas of potential impacts of oil exploration
- Fish

2.3 Areas of importance to Protecting and Sustaining the Environment

Areas and issues discussed during the information sharing and gathering sessions as important to Protecting and Sustaining the Environment are illustrated on Map 1, including areas identified in the DNLUP and areas identified by the community. Scanned images of the maps on which community feedback was recorded can be found in Appendix 4.

Based on discussions with participants, the NPC understands that:

- The areas identified on Map 1 are considered by the Community to be important to Protecting and Sustaining the Environment.
- In these areas, the community would like the NLUP to encourage activities that support environmental protection and management needs, including wildlife conservation, protection and management.

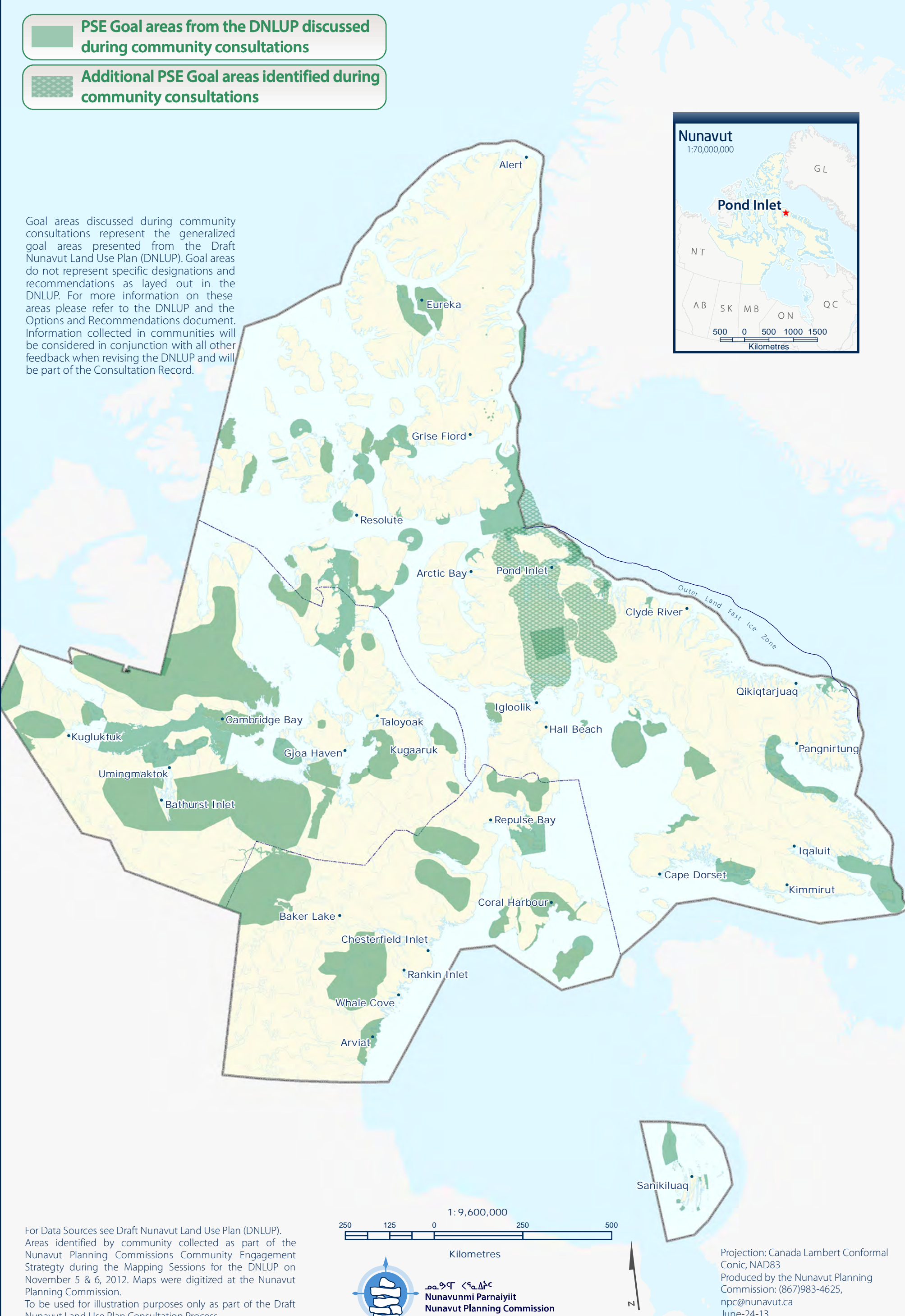
This feedback will be considered in conjunction with all other feedback when revising the DNLUP.



PSE Goal areas from the DNLUP discussed during community consultations

Additional PSE Goal areas identified during community consultations

Goal areas discussed during community consultations represent the generalized goal areas presented from the Draft Nunavut Land Use Plan (DNLUP). Goal areas do not represent specific designations and recommendations as layed out in the DNLUP. For more information on these areas please refer to the DNLUP and the Options and Recommendations document. Information collected in communities will be considered in conjunction with all other feedback when revising the DNLUP and will be part of the Consultation Record.



For Data Sources see Draft Nunavut Land Use Plan (DNLUP). Areas identified by community collected as part of the Nunavut Planning Commissions Community Engagement Strategy during the Mapping Sessions for the DNLUP on November 5 & 6, 2012. Maps were digitized at the Nunavut Planning Commission. To be used for illustration purposes only as part of the Draft Nunavut Land Use Plan Consultation Process.

Projection: Canada Lambert Conformal Conic, NAD83
Produced by the Nunavut Planning Commission: (867)983-4625, npc@nunavut.ca
June-24-13

Chapter 3: Encouraging Conservation Planning

Encouraging Conservation Planning was one of five topics presented to and discussed by the participants during the information sharing and gathering sessions.

3.1 Areas presented to participants

During the information sharing and gathering sessions, participants were presented the following areas and issues as important to Encouraging Conservation Planning;

- National Parks Awaiting Full Establishment
- Proposed National Parks
- National Marine Conservation Areas
- Thelon Wildlife Sanctuary
- Migratory Bird Sanctuaries
- National Wildlife Areas
- National Historic Sites
- Territorial Historic Sites
- Heritage Rivers

The importance of these issues and areas to Encouraging Conservation Planning was not disputed by participants during the information sharing and gathering sessions.

3.2 Areas identified by participants

Additional areas and issues were identified by participants as important to Encouraging Conservation Planning during the information sharing and gathering sessions. These additional areas are.

- Extensions of NMCA
- Important bird areas
- Exclusions from NMCA

- Historic Areas
- Fish
- Historical travel routes

3.3 Areas of importance to Encouraging Conservation Planning

Areas and issues discussed during the information sharing and gathering sessions as important to Encouraging Conservation Planning are illustrated on Map 2, including areas identified in the DNLUP and areas identified by the community. Scanned images of the maps on which community feedback was recorded can be found in Appendix 4.

Based on discussions with participants, the NPC understands that:

- The areas identified on Map 2 are considered by the Community to be important to Encouraging Conservation Planning.
- In these areas, the community would like the NLUP to encourage activities that support environmental protection and management needs, including wildlife conservation, protection and management.

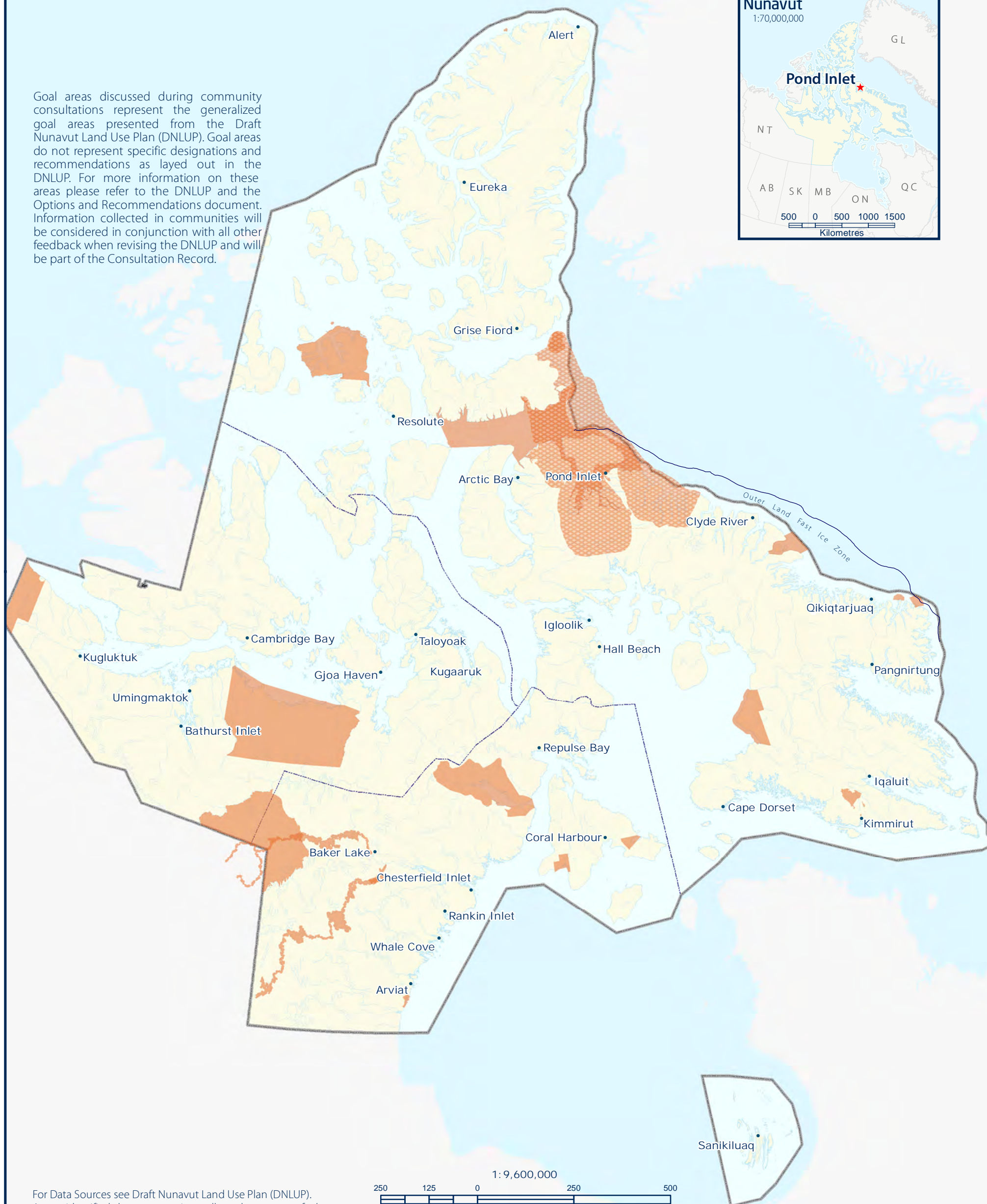
This feedback will be considered in conjunction with all other feedback when revising the DNLUP.



ECP Goal areas from the DNLUP discussed during community consultations

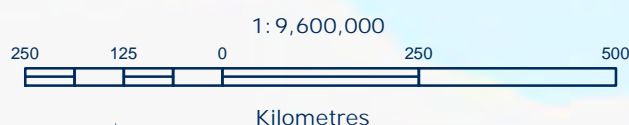
Additional ECP Goal areas identified during community consultations

Goal areas discussed during community consultations represent the generalized goal areas presented from the Draft Nunavut Land Use Plan (DNLUP). Goal areas do not represent specific designations and recommendations as layed out in the DNLUP. For more information on these areas please refer to the DNLUP and the Options and Recommendations document. Information collected in communities will be considered in conjunction with all other feedback when revising the DNLUP and will be part of the Consultation Record.



For Data Sources see Draft Nunavut Land Use Plan (DNLUP). Areas identified by community collected as part of the Nunavut Planning Commissions Community Engagement Strategy during the Mapping Sessions for the DNLUP on November 5 & 6, 2012. Maps were digitized at the Nunavut Planning Commission.

To be used for illustration purposes only as part of the Draft Nunavut Land Use Plan Consultation Process.



ᓄᓇᓂᓴᑦ ᑕᓴᓇᓂᓴᑦ
Nunavunmi Parnaiyiit
Nunavut Planning Commission
Commission d'Aménagement du Nunavut

Projection: Canada Lambert Conformal
Conic, NAD83
Produced by the Nunavut Planning
Commission: (867)983-4625,
npc@nunavut.ca
June-25-13

Chapter 4: Building Healthier Communities

Building Healthier Communities was one of five topics presented to and discussed by the participants during the information sharing and gathering sessions.

4.1 Areas presented to participants

During the information sharing and gathering sessions, participants were presented the following areas and issues as important to Building Healthier Communities;

- Areas of Community Interest
- Community Land Use
- Transportation Infrastructure
- Unincorporated Communities
- Alternative Energy Sources
- Community drinking water supplies
- Land remediation
- Northern Contaminated Sites Program
- Aerodromes
- Canadian Forces Station
- Northern Warning System sites

The importance of these issues and areas to Building Healthier Communities was not disputed by participants.

4.2 Areas identified by participants

Additional areas and issues were identified by participants as important to contributing to the goal of Building Healthier Communities during the information sharing and gathering sessions. These additional areas are;

- Drinking water

- Contaminated sites
- Travel routes
- Outpost camps
- Hunting/camping areas

4.3 Areas of importance to Building Healthier Communities

Areas and issues discussed during the information sharing and gathering sessions as important to Building Healthier Communities are illustrated on Map 3, including areas identified in the DNLUP and areas identified by the community. Scanned images of the maps on which community feedback was recorded can be found in Appendix 4.

Based on discussions with participants, the NPC understands that:

- The areas identified on Map 3 are considered by the Community to be important to Building Healthier Communities.
- In these areas, the community would like the NLUP to encourage activities that support community needs and cultural priorities.

This feedback will be considered in conjunction with all other feedback when revising the DNLUP.





BHC Goal areas from the DNLUP discussed during community consultations



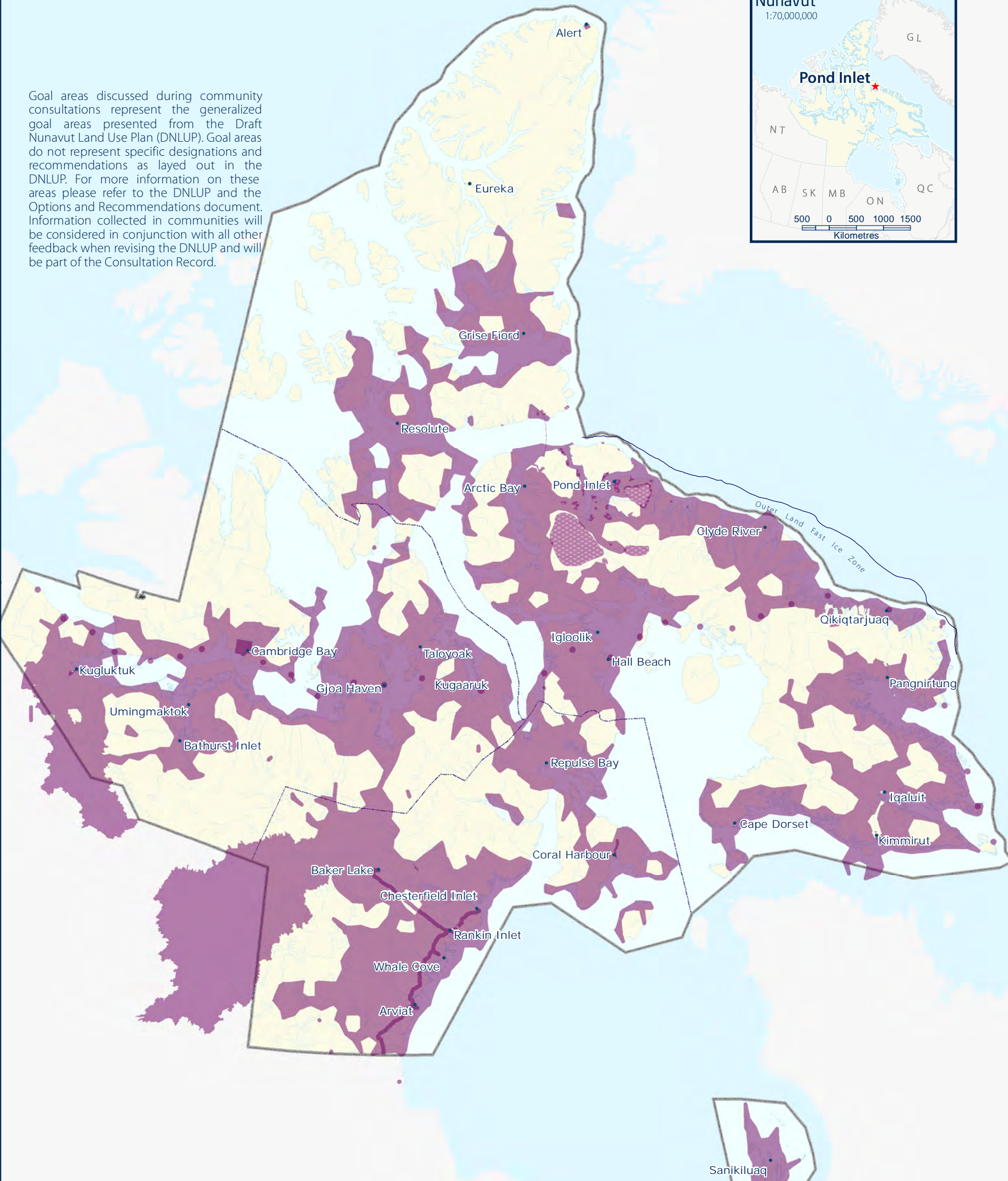
Additional BHC Goal areas identified during community consultations

Goal areas discussed during community consultations represent the generalized goal areas presented from the Draft Nunavut Land Use Plan (DNLUP). Goal areas do not represent specific designations and recommendations as layed out in the DNLUP. For more information on these areas please refer to the DNLUP and the Options and Recommendations document. Information collected in communities will be considered in conjunction with all other feedback when revising the DNLUP and will be part of the Consultation Record.

Nunavut
1:70,000,000

Pond Inlet

500 0 500 1000 1500
Kilometres



For Data Sources see Draft Nunavut Land Use Plan (DNLUP). Areas identified by community collected as part of the Nunavut Planning Commissions Community Engagement Strategy during the Mapping Sessions for the DNLUP on November 5 & 6, 2012. Maps were digitized at the Nunavut Planning Commission. To be used for illustration purposes only as part of the Draft Nunavut Land Use Plan Consultation Process.

250 125 0 250 500
1:9,600,000
Kilometres



ᓄᓇᓂᓄᓐ ᐸᓐᓇᓂᓄᓐ
Nunavunmi Parnaiyiit
Nunavut Planning Commission
Commission d'Aménagement du Nunavut



Projection: Canada Lambert Conformal
Conic, NAD83
Produced by the Nunavut Planning
Commission: (867)983-4625,
npc@nunavut.ca
June-25-13

Chapter 5: Encouraging Sustainable Economic Development

Encouraging Sustainable Economic Development was one of five topics presented to and discussed by the participants during the information sharing and gathering sessions.

5.1 Areas presented to participants

During the information sharing and gathering sessions, participants were presented with the following areas important to Encouraging Sustainable Economic Development;

- Mineral Exploration and Production
- Oil and Gas Exploration
- Commercial Fisheries

The importance of these issues and areas to Encouraging Sustainable Economic Development was not disputed by participants during the information sharing and gathering sessions.

5.2 Areas identified by participants

Additional areas and issues were identified by participants as important to Encouraging Sustainable Economic Development during the information sharing and gathering sessions. The additional areas identified are;

- Polar Bear hunting
- Commercial fishing
- Tourism
- Berries
- Marine mammals
- Coal
- Flint

- Research camps

5.3 Areas of importance to Encouraging Sustainable Economic Development



Areas and issues discussed during the information sharing and gathering sessions as important to Encouraging Sustainable Economic Development are illustrated on Map 4, including areas identified in the DNLUP and areas identified by the community. Scanned images of the maps on which community feedback was recorded can be found in Appendix 4.

Based on discussions with participants, the NPC understands that:

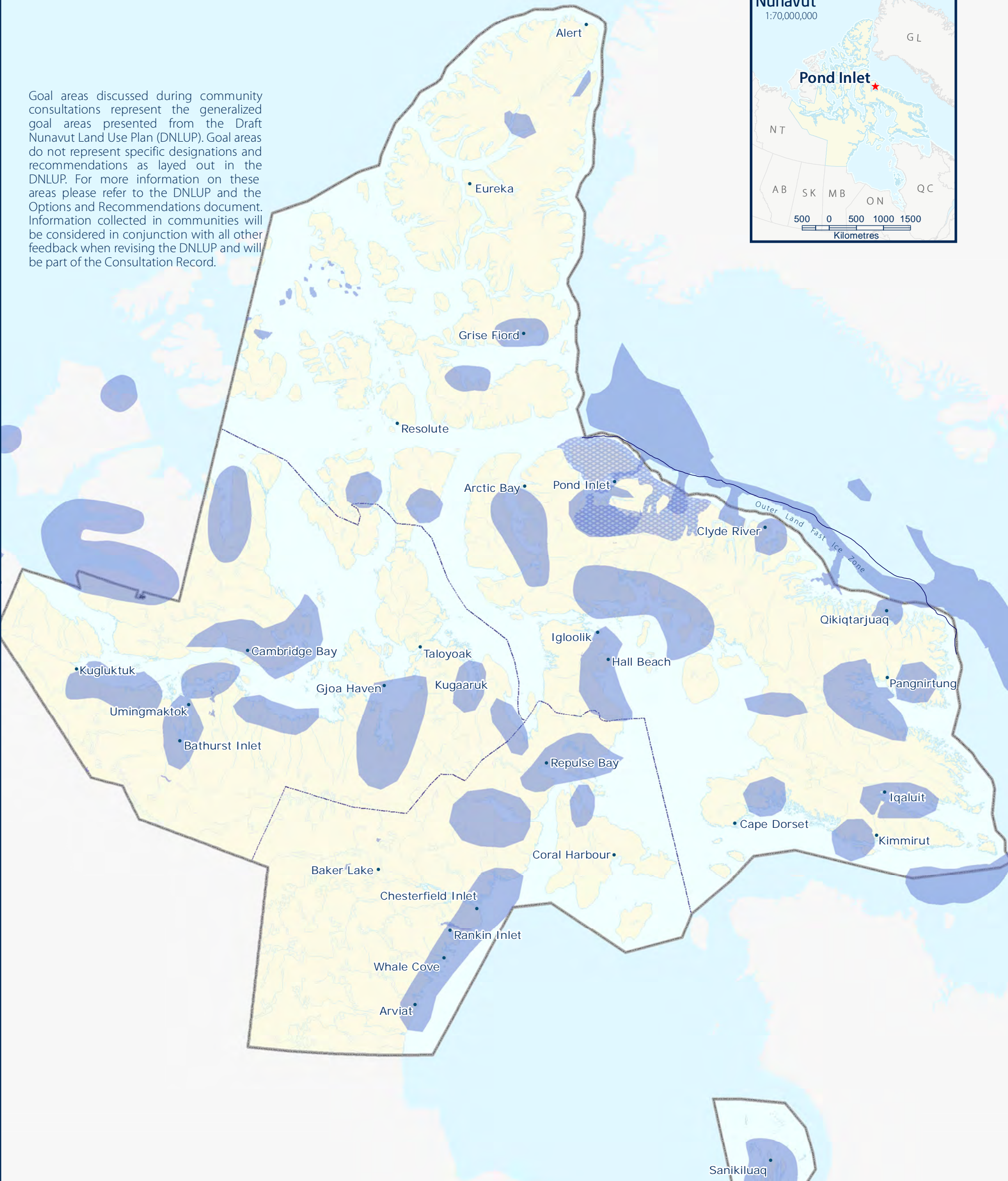
- The areas identified on Map 4 are considered by the Community to be important to Encouraging Sustainable Economic Development.
- In these areas, the community would like the NLUP to encourage activities that support economic opportunities and needs.

This feedback will be considered in conjunction with all other feedback when revising the DNLUP.



-  ESED Goal areas from the DNLUP discussed during community consultations
-  Additional ESED Goal areas identified during community consultations

Goal areas discussed during community consultations represent the generalized goal areas presented from the Draft Nunavut Land Use Plan (DNLUP). Goal areas do not represent specific designations and recommendations as layed out in the DNLUP. For more information on these areas please refer to the DNLUP and the Options and Recommendations document. Information collected in communities will be considered in conjunction with all other feedback when revising the DNLUP and will be part of the Consultation Record.



For Data Sources see Draft Nunavut Land Use Plan (DNLUP). Areas identified by community collected as part of the Nunavut Planning Commissions Community Engagement Strategy during the Mapping Sessions for the DNLUP on November 5 & 6, 2012. Maps were digitized at the Nunavut Planning Commission. To be used for illustration purposes only as part of the Draft Nunavut Land Use Plan Consultation Process.



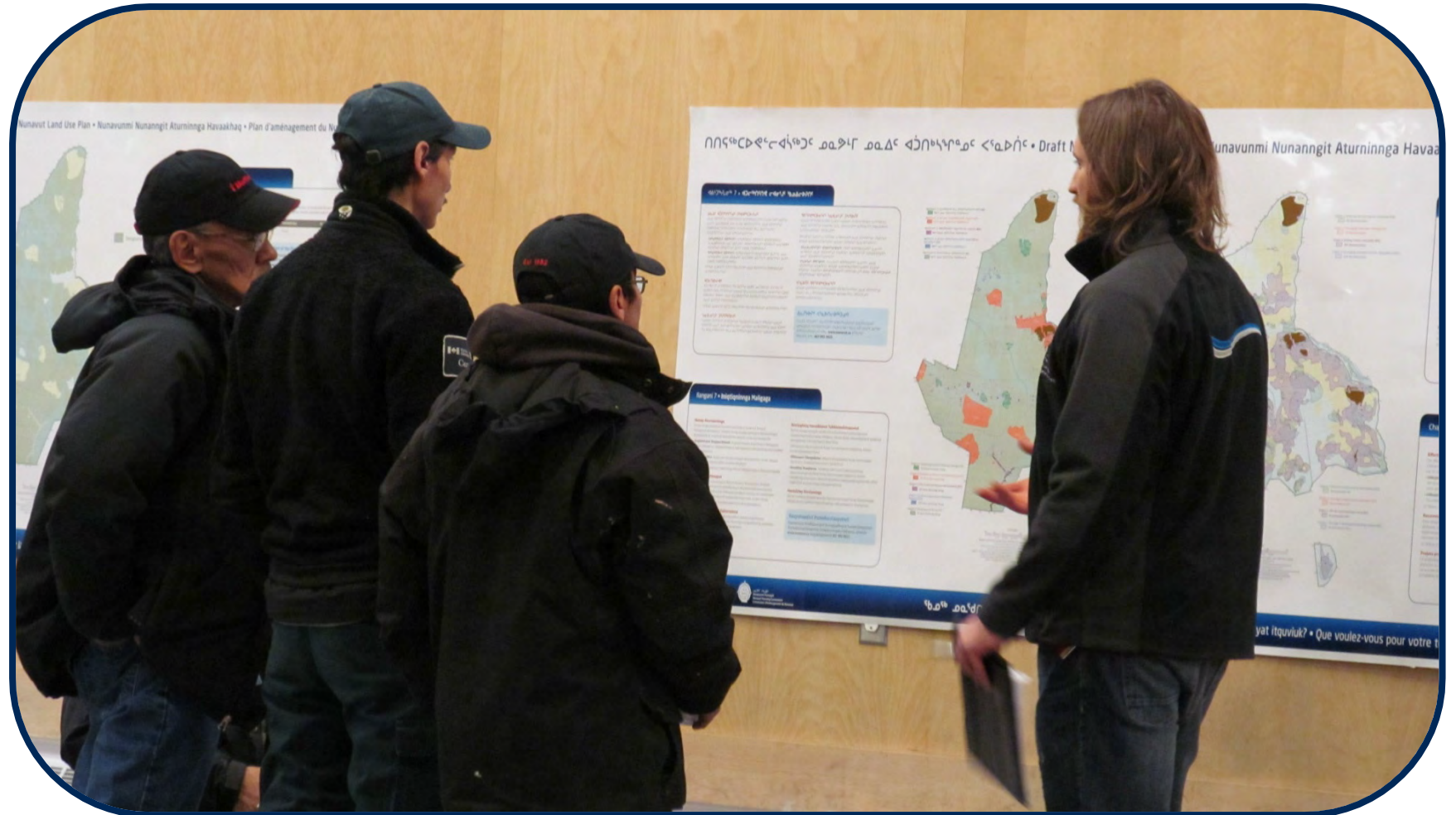
Projection: Canada Lambert Conformal Conic, NAD83
Produced by the Nunavut Planning Commission: (867)983-4625, npc@nunavut.ca
June-25-13

6.1 Areas identified in the Draft Plan

The DNLUP identifies areas important for a variety of uses. These areas were presented to participants during the workshop as Mixed Use Areas. These areas, as they occur around the community, are illustrated on Map 5.

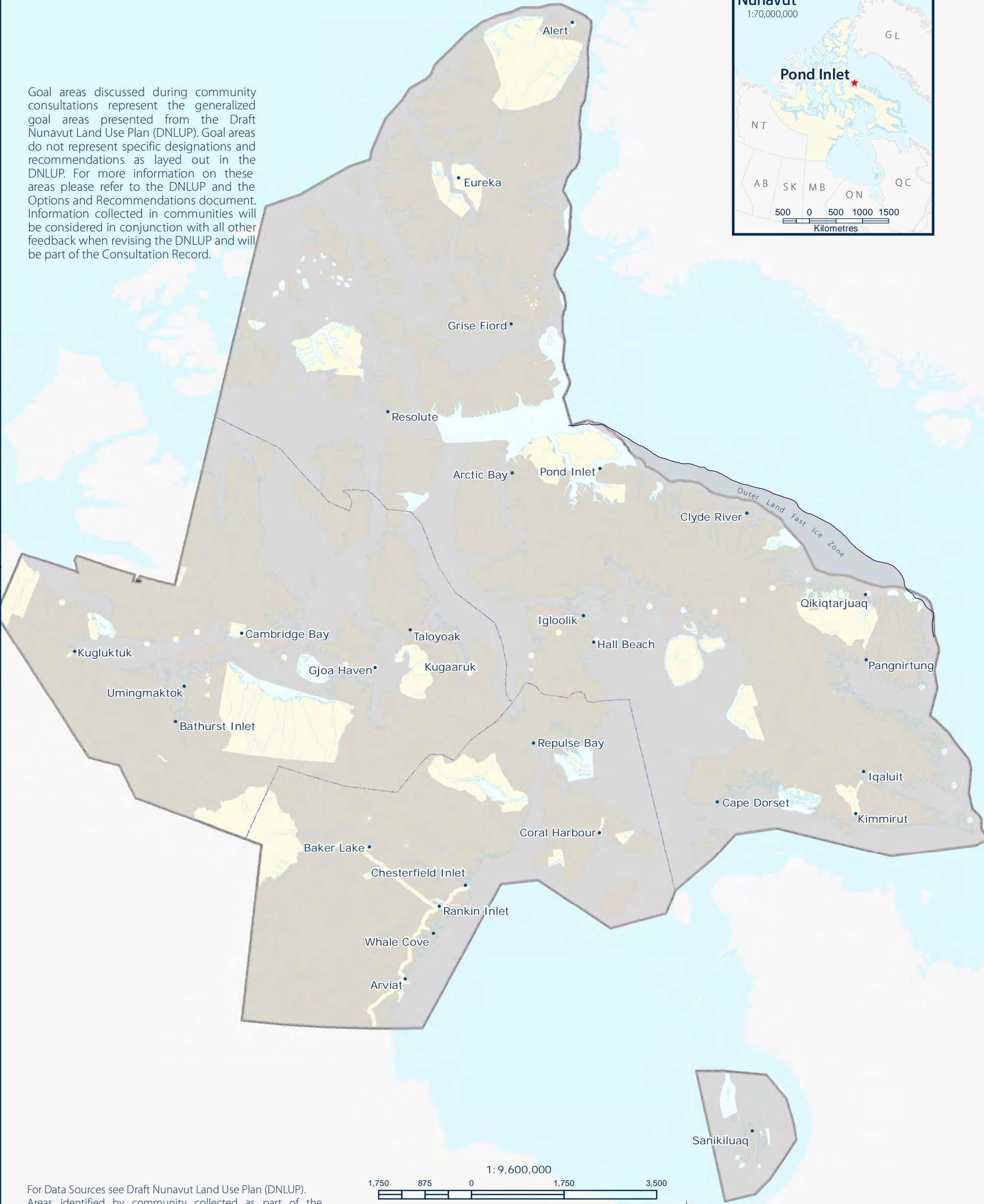
6.2 Areas identified by participants

No additional areas were identified as Mixed Use by participants. However, some areas identified as Mixed Use in the DNLUP were considered by participants to require additional protection because of their particular qualities. These areas and the goals they are important for are identified on Map 6.



MU Goal areas from DNLUP discussed during community consultations

Goal areas discussed during community consultations represent the generalized goal areas presented from the Draft Nunavut Land Use Plan (DNLUP). Goal areas do not represent specific designations and recommendations as layed out in the DNLUP. For more information on these areas please refer to the DNLUP and the Options and Recommendations document. Information collected in communities will be considered in conjunction with all other feedback when revising the DNLUP and will be part of the Consultation Record.



For Data Sources see Draft Nunavut Land Use Plan (DNLUP). Areas identified by community collected as part of the Nunavut Planning Commissions Community Engagement Strategy during the Mapping Sessions for the DNLUP on November 5 & 6, 2012. Maps were digitized at the Nunavut Planning Commission. To be used for illustration purposes only as part of the Draft Nunavut Land Use Plan Consultation Process.



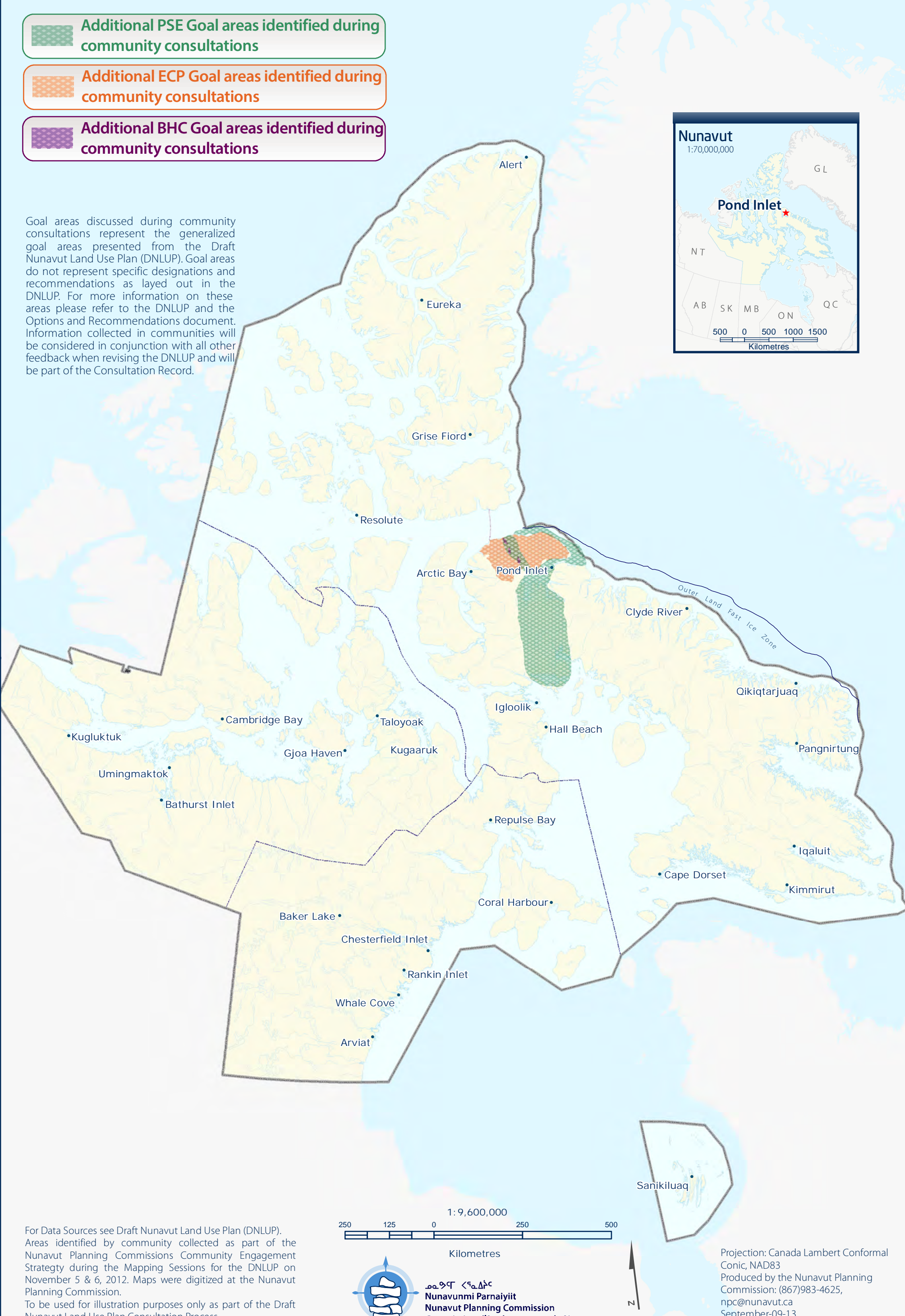
ᓄᓇᓂᓄᓐ ᐸᓐᓇᓂᓄᓐ
Nunavunmi Parnaiyiit
Nunavut Planning Commission
Commission d'Aménagement du Nunavut



Projection: Canada Lambert Conformal Conic, NAD83
Produced by the Nunavut Planning Commission: (867)983-4625, npc@nunavut.ca
June-24-13

-  **Additional PSE Goal areas identified during community consultations**
-  **Additional ECP Goal areas identified during community consultations**
-  **Additional BHC Goal areas identified during community consultations**

Goal areas discussed during community consultations represent the generalized goal areas presented from the Draft Nunavut Land Use Plan (DNLUP). Goal areas do not represent specific designations and recommendations as layed out in the DNLUP. For more information on these areas please refer to the DNLUP and the Options and Recommendations document. Information collected in communities will be considered in conjunction with all other feedback when revising the DNLUP and will be part of the Consultation Record.



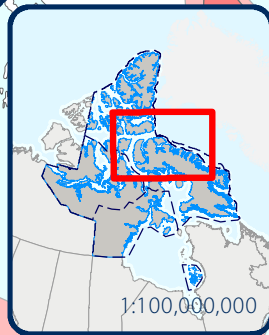
For Data Sources see Draft Nunavut Land Use Plan (DNLUP). Areas identified by community collected as part of the Nunavut Planning Commissions Community Engagement Strategy during the Mapping Sessions for the DNLUP on November 5 & 6, 2012. Maps were digitized at the Nunavut Planning Commission. To be used for illustration purposes only as part of the Draft Nunavut Land Use Plan Consultation Process.

7.1 Areas identified for multiple goals

All areas discussed with the community as important for a particular goal are shown on Map 7. In some instances, areas have been identified as important for multiple goals. These areas, and the specific goals they are important to, are also shown on Map 7. In these areas, the NPC will take all of the identified goals and all other feedback into consideration when revising the DNLUP.

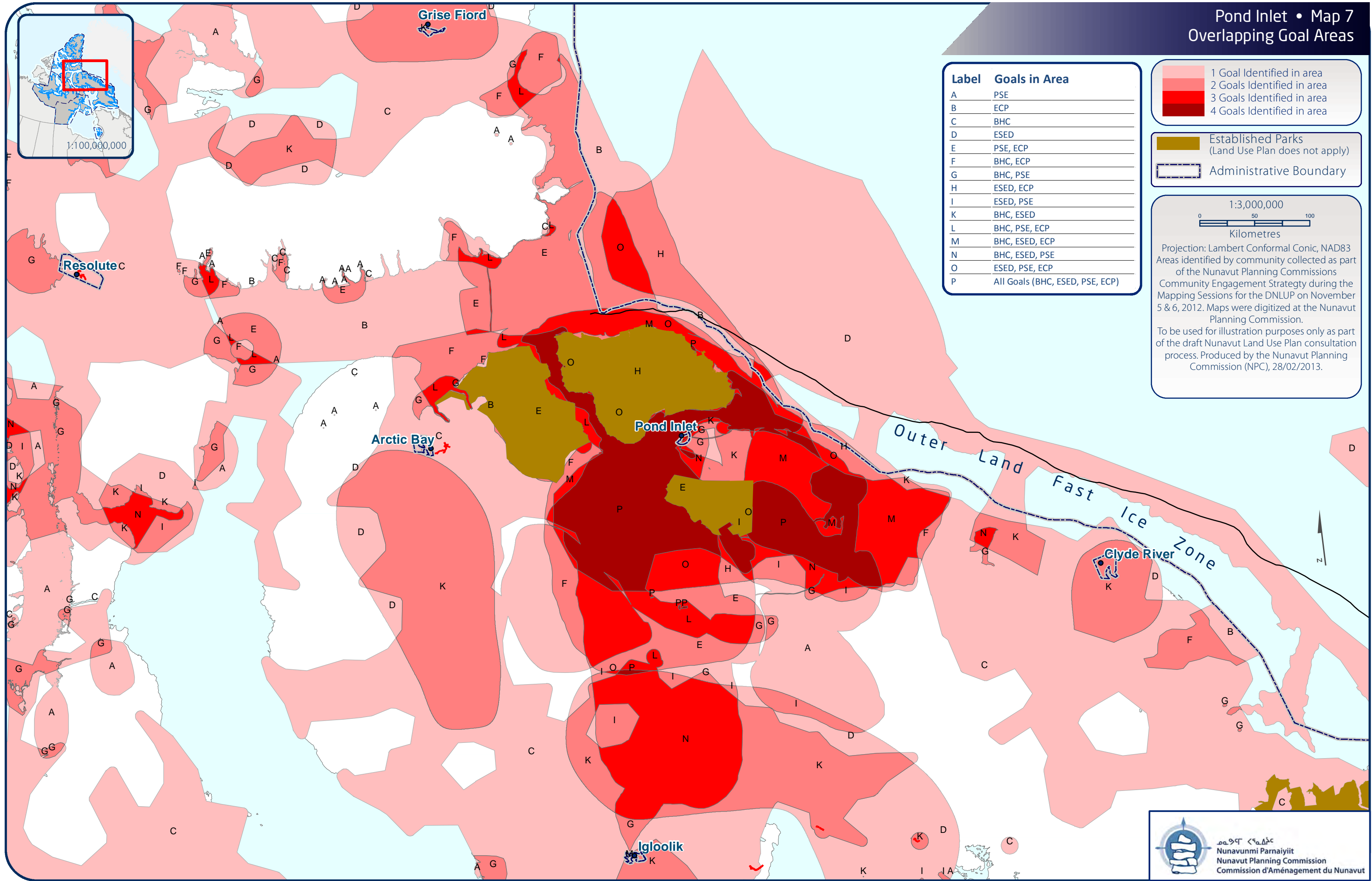
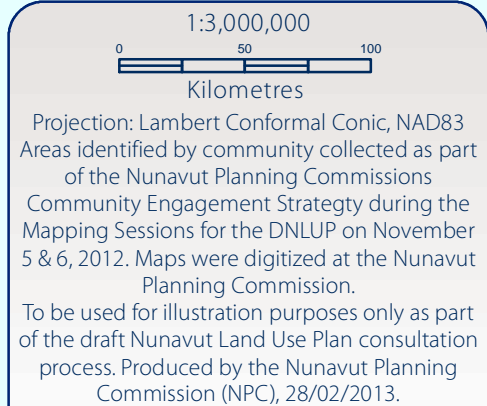
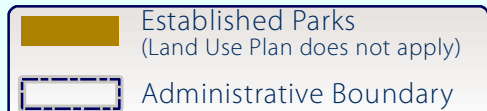
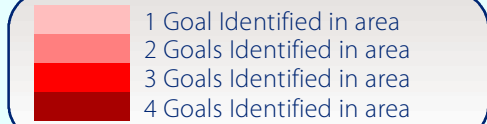


Pond Inlet • Map 7 Overlapping Goal Areas



1:100,000,000

Label	Goals in Area
A	PSE
B	ECP
C	BHC
D	ESED
E	PSE, ECP
F	BHC, ECP
G	BHC, PSE
H	ESED, ECP
I	ESED, PSE
K	BHC, ESED
L	BHC, PSE, ECP
M	BHC, ESED, ECP
N	BHC, ESED, PSE
O	ESED, PSE, ECP
P	All Goals (BHC, ESED, PSE, ECP)



Appendix 1: Open House

During the open house, participants raised the following issues:

- Concerns about including Eclipse Sound in NMCA.
- Bird area closest to Pond also important for marine mammals.
- Polar Bear denning along outer Baffin coast. Because polar bears are increasing, seals are decreasing in numbers. We are asked to catch only male polar bear. Isn't it time to catch female too? That would be equal. Decreasing polar bear hunting with tourists. We had 30 polar bear tags 2 years ago, decreased by 1.
- We work with tourists in the area within 7 miles of flow edge(east end of Bylot Island). This is an important area for the tourist hunt. Polar Bear habitat is more at sea. Polar Bear will run to the sea to escape. Polar Bear have more blubber in summer, and they are at sea more in summer looking for floating seal to eat.
- Area NE of Clyde River should be marked for Fulmar bird habitat.
- Current goes out of Lancaster Sound all the time. Wind goes counter clockwise around Bylot Island. NMCA should have no oil and gas exploration - dangerous area to drill due to icebergs.
- Lancaster Sound NMCA - important area for fish that spawn in lakes (Char)
- Pond Inlet watershed is important - has to be safeguarded.
- Pond Inlet watershed is a holding pond - pull from river. There has been population growth. To Pond Inlet it is important. Although it can be outside of boundary. We get our food from there.
- Eastern Bylot Island - important area for goose nesting adjacent to PSE-R1
- North Baffin Land Use Plan prohibits family moving into mine. Would NLUP allow this?
- NWMB - Harvest study, have you used this? (responded that the Commission has reviewed the harvest study)
- Narwhal calving areas in Milne Inlet and adjacent inlet to the west. Prohibit cruise ships in areas where Narwhals give birth. Cruise ships come into the community and do not spend money.
- Sound of ship generator/propeller makes animals move away.
- There has been an increase in the use of private yachts. We need more patrols to control boats.
- Cruise ships create problems, supply ships are ok
- Shipping routes from Baffinland not so much a problem anymore
- Sod house in the area should be protected
- All regulators, agencies should work together better
- Bylot Island contains old HBC camps, hunters use it when hunting
- Lancaster sound should be protected
- Routes between communities should be protected



Appendix 2: Elected Officials Meeting

The elected officials meeting was attended by the Mayor and members of the Hamlet Council and HTO. During the meeting, participants raised the following issues:

- Concerned with oil exploration and want a say in the process
- International use of the Northwest passage
- Need rules and regulations for shipping during winter months through the Northwest Passage
- Dumping of ballast water is a concern
- Want more say in managing wildlife
- Tourist ships create noise, disturb wildlife, and aren't helping the economy
- Concerned about impacts on the community from Mary River project
- Identified monitoring the return of caribou at Mary River project as a research priority



Appendix 3: Questions and Answers

During the community workshop, there was a question and answer period, which included a discussion of the following topics:

- The Hudson Bay Company owns land on Bylot Island that is used by hunters. What can the community do if the company wants to do something on that land?
 - The Commission explained that if the company already owns the land, they have a right to use it.
- What if areas are found to have minerals after? What is the tool to enforce?
 - The Commission answered that the Plan will be a legally binding document once approved. It will also be a living document that will be reviewed and can be amended.
- If protected areas are established in the Plan, can they be easily changed?
 - The Commission answered that the plan amendment process is a public process.
- The North Baffin Regional Land Use Plan does not support the establishment of communities at mining sites. If the Mary River project goes ahead, and there are negative impacts and is not working, can they set up an area like Nanisivik?
 - The Commission answered that anyone can request a plan amendment.
- Is there protection north of Bylot Island?
 - The Commission answered that negotiations are underway to establish a National Marine Conservation Area in Lancaster Sound, and that the areas will be discussed in the mapping session to follow.
- Hunters travel far to hunt and see barrels, etc. on the land from commercial activities. How do we know who is out there?
 - The Commission answered that the land owners should have this information.



Appendix 4: Community Workshop Scanned Maps

Three groups completed the mapping session to identify important areas. This Appendix contains the maps that were used by participants to identify areas that are important to the following land use planning goals:

- Protecting and Sustaining the Environment
- Encouraging Conservation Planning
- Building Healthier Communities
- Encouraging Sustainable Economic Development
- Mixed Use

Also included on each map is a reference table that includes the specific values that were identified for the area.

During the mapping portion of the community workshop, the following concerns were raised that did not apply to a specific area that was identified on the maps:

- Baffin Bay is also important to the proposed National Marine Conservation Area
- Conservation areas are very important
- Lancaster Sound is very important for marine mammals
- Protecting drinking water is important
- Happy with the Use and Occupancy project record of community land use
- Concerned about material from dump getting into water supply.
- Mary River is contaminated
- There are empty fuel barrels everywhere
- Could make money with coal. RCMP used to collect it.

- Potential for flint in the area (could make money?)
- Happy with marked areas for turbot.
- Concerned about cruise ships.
- Concerned about ice breaking.
- Regarding shipping, most concerned with privately owned yachts and sailboats that just go where they want.
- Lancaster sound is important for protection for marine mammals
- All areas of water are important for protection
- Oil and gas may not be possible
- Petro Canada wanted to work in the 1970's in Lancaster Sound, before sonar. Inuit were against drilling.
- No caribou around. The caribou migrated back. I think a lot of them drowned. Dead caribou were found frozen in the water. When animals get over abundant, they start dying, even polar bears.
- Igloolik never used to get geese, but now they do. Animals are going where they never used to be.
- Animals were gone when they were doing research in Milne Inlet. Now they are coming back. When the sonar was gone, the animals came back.
- We cannot control caribou and their migration routes. They hear noises, but they become accustomed to it.
- Animals disappear and they come back. Their migration routes change. Studies find they are gone, but they have moved.
- Caribou calving grounds are part of Mary River.

- Caribou calve in high places to stay away from wolves.
- Now getting more kinds of birds. Seeing fewer snowy owls.
- Polar bears and seals can be found everywhere and you can make money on them. Polar bears are taking all the seals. Big males kill lots of seals.
- Can we ask for money to travel through our waters? We could use the money to build harbours.
- Sirmilik National Park east of Arctic Bay important for caribou hunting.

Pond Inlet - Group 1 Results



 Roads
 Inuit Owned Lands (Surface)
 Administrative Boundary

 Established Parks & Use Plan does not apply
  Inuit Owned Lands (Sub-surface)

Designations	Permitted Uses	Prohibited Uses
PSG-1	Tourism, Recreation, Research	All Other Uses
PSG-2	Residential, Recreation, Research	
PSG-3	Tourism, Recreation, Research, Major Infrastructure, Major Communications and Electrical Cables	

Reference Table for Recommendations	
PS-01	Inspect Program located in a key field history "are" should take into account impacts in the regulatory field that may be on the way
PS-02	Inspect Program located in historic carbon capture grounds should take into account impacts on carbon capture plant taking and regulatory history
PS-03	Inspect Program located in and/or near known carbon capture or a critical field should take into account impacts and may require a series of actions to make the
PS-04	Inspect Program located in locations of the Great Lakes water watershed in National should take into account regulatory impacts that may require the construction of the watershed

Code	Comments
XP01	Canada geese, snow geese area
XP02	Snow geese area
XP03	ducks
XP04	Eider ducks, needs protection
XP05	More protection needed in this area because of eider ducks
XP06	More protection needed in this area
XP07	Eider ducks
XP08	Snow geese, protect these areas
XP09	Eider ducks
XP10	Caribou, geese
XP11	Travel route
XP12	Meeting place, caribou
XP13	Caribou and snow geese
XP14	Travel routes
XP15	Too much development in this area
XP16	Caribou area

Community:	
Location:	
Region:	
State:	
Community Fund:	
Vol #	
 Signatures of the Community Equity in partnership team to conduct mapping session as informants.	
1. <u>Laura Pappas</u>	16
2. <u>Maria Rodriguez</u>	17
3. <u>Patricia Lopez</u>	18
4. <u>Theresa Hernandez</u>	19
5. <u>Belen Sanchez</u>	20
6. <u>Sandra Felix</u>	21
7. <u>Gonzalez Garcia</u>	22
8. <u>Christina Castro</u>	23
9. _____	24
10. _____	25
11. _____	26
12. _____	27
13. _____	28
14. _____	29
15. _____	30

Signature of Mapper: Proctor

CONFIDENTIAL
Cody & Co. Planning Commission
2003-2004

CONFIDENTIALITY IS A MUST

Coordinate System: EPSG 42304 LCC
Projection: Lambert Conformal Conic
Datum: North American 1983
False Easting: 0.0000
False Northing: 0.0000
Central Meridian: -95.0000
Standard Parallel 1: 49.0000
Standard Parallel 2: 77.0000
Latitude of Origin: -43.0000
Units: Meter

Map of

For Land Use Designations and Recommendations sources for each Nunavut Land Use Plan and Basic Plan. The map is available in print and electronic formats. Please contact the Nunavut Department of Environment and Natural Resources for more information.

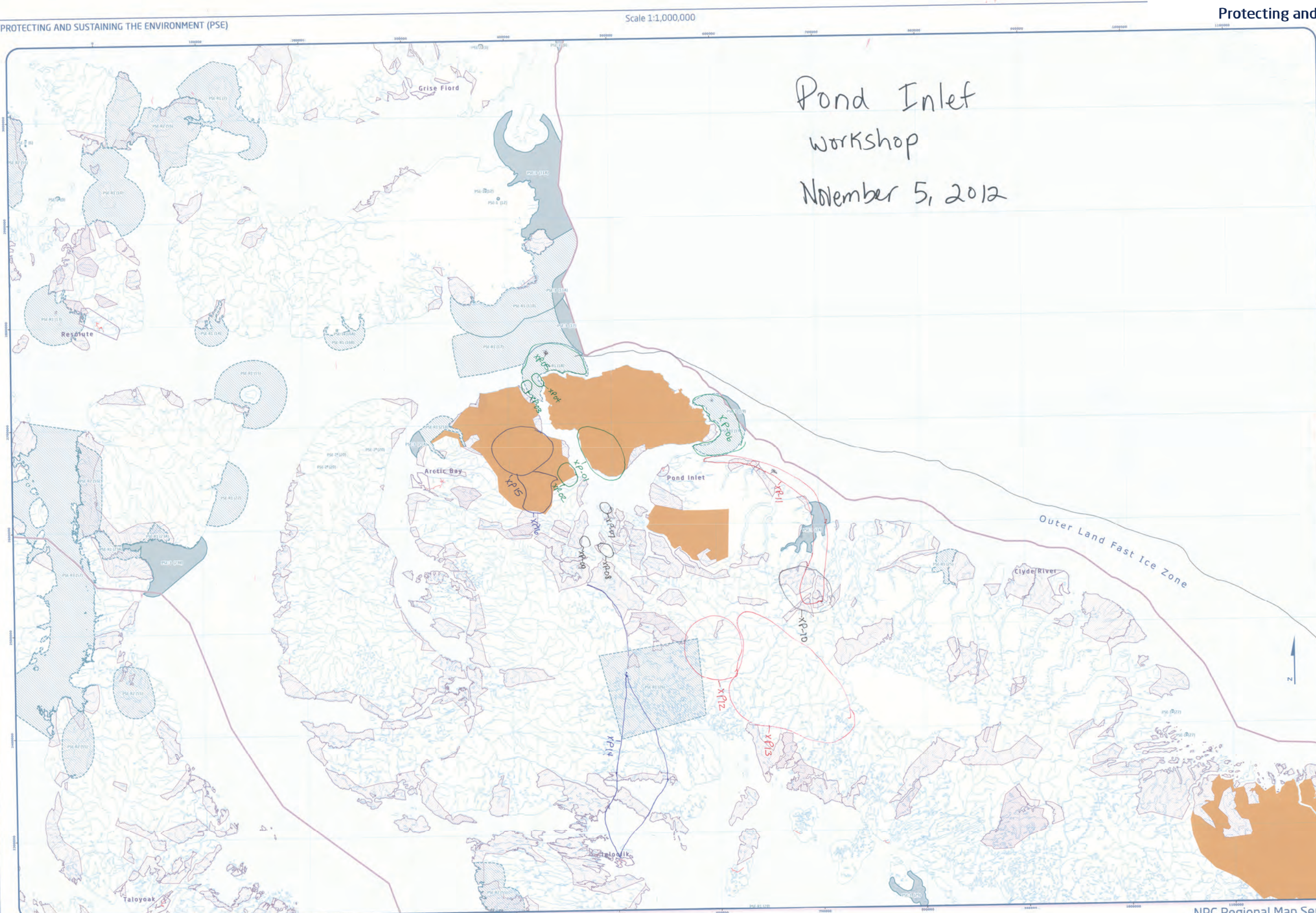
Hillshade created by utilizing SAGA software in Hillshade toolbox in Nunavut version 2.0 and selecting all water bodies created by merging all 1:250,000 scale map sheet polygons in Nunavut version 2.0 and selecting all water bodies 50 hectares in size. Land use of Nunavut, country of Georgia. Administrative boundaries of Nunavut, country of Georgia. Regional boundaries, created to reflect regional planning Association jurisdictions, combined with the boundaries, provided by Natural Resources Canada Canada, must. Owned Lands country of Nunavut. Nunavut Incorporated. Territorial parks from the Government of Nunavut. National Parks from Parks Canada. Parks for areas within municipal boundaries obtained from Natural Resources Canada Canada.

This map is to be used for reference purposes only and is not to be used for legal purposes. For more information, please contact the Nunavut Department of Environment and Natural Resources.

Any further use of this map is a derivative work. For more information, please contact the Nunavut Department of Environment and Natural Resources.

Copyright © 2007 by the Nunavut Department of Environment and Natural Resources. All rights reserved.

Thursdays, October 10, 2007



Pond Inlet – Group 2 Results and Sustaining the Environment



Designations	Permitted Uses	Prohibited Uses
PSI-1	Teaching, Recreational, Research	All Other Uses
PSI-2	Teaching, Recreational, Research	
PSI-3	Teaching, Recreational, Research, Marine Invertebrates, Marine Cephalopods and Elasmobranchs	

Reference Table for Recommendations	
PSE-01	Project Proponent located in a Key and Habitat site should take into account impacts on the migratory birds that rely on the area.
PSE-02	Project Proponent located in historic/aesthetic viewing grounds should take into account impacts on park/heritage, scenic, cultural, and migration issues.
PSE-03	Project Proponent located in and/or near known fisheries or spawning areas should take into account birds that may increase the ability of humans to catch the fish.
PSE-04	Project Proponent located in riparian or forested areas that are waterfowl or bird habitat should take into account the migratory birds that may reduce the composition level of the waterbody.

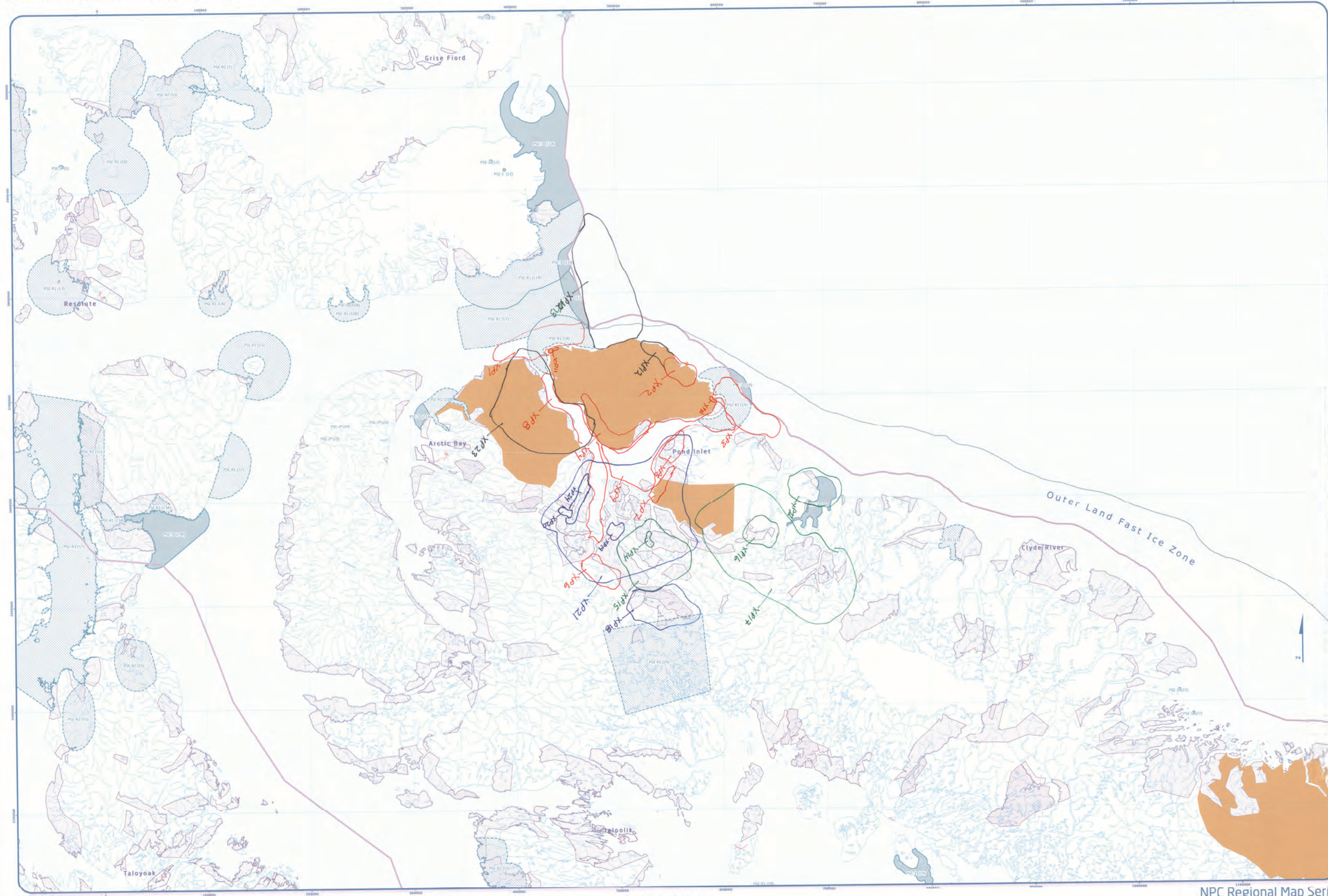
Code	Comments
XP1	this area is most important to the community; the floe edge, lot of mammals there, abundance of cod, walrus, polar bears narwhales, beluga, lots of birds.
XP2	Lots of caribou in this area near this lake
XP3	Important hunting area, floe edge
XP4	Important bird area
XP5	Area is full of wildlife. Important for geese. Concerned with noise.
XP6	Important for geese and other birds. Concerned with noise.
XP7	Important for geese. Concerned with noise.
XP8	Calving grounds for whales. Important with noise from ships. Include shore and inlets - important for beluga and should be protected.
XP9	Concerned with noise from ships.
XP10	Nesting area for murrens. Concerned with noise.
XP11	Important bird area
XP12	Important area for caribou
XP13	Oil companies outside boundary can impact along coast.
XP14	Important for sandhill cranes
XP15	Caribou calving
XP16	Fox trapping area.
XP17	Caribou calving
XP18	for generations known as a calving area. Caribou will return.
XP19	This small lake in particular is important because it is full of small birds feeding and nesting in this area from spring to late summer each year.
XP20	small lake important for fish
XP21	previous areas important for all kinds of birds (nesting)
XP22	important area for fulmar, seals.
XP23	only are where caribou are currently found
XP24	Tremblay Sound must be included. Narwhal calving. No cruise ships.


 Datum: North American 1983
 False Easting: 0.0000
 False Northing: 0.0000
 Central Meridian: -95.0000
 Standard Parallel 1: 19.0000
 Standard Parallel 2: 77.0000
 Latitude of Origin: 33.0000
 Units: Meter

Working Draft-Sub-regional map data sources:
 Land Use Designations and Recommendations sources: Land Use Plans and background
 material data source documents.
 Hillshading created by utilizing Swiss method in HILLSHADE toolset courtesy of GIS-user forum water bodies
 created using a 1:250,000 scale map in Nunavut, 1:250,000 and 1:250,000 scale maps of Yukon and
 50 hectares in size. Land outside of Yukon, territory of Georgia: Administrative boundaries of municipal of NRC
 district regional boundaries, created to reflect Regional Inuit Association jurisdictions, combined with municipal
 boundaries, provided by Natural Resources Canada to the Government of Nunavut and the Government of
 Nunavut. Incorporated: Territorial parks from the Government of Nunavut, National Parks from Parks Canada
 data for areas within municipal boundaries obtained from Natural Resources Canada designations
 by the NRC.
 Any further use of this map or data therein must be authorized by contacting the Nunavut Planning
 Commission at (867) 788-1454 or by email at npcom@nunavut.ca
 Thursday, October 04, 2012



Scale 1:1,000,000



ΠΑΡΑΓΕΤΕΡ ΣΟΙΝΗ

Scale 1:1,000,000

NPC Regional Map Series

Pond Inlet - Group 2 Results

[illegible]

Code	Comments
XC25	Important marine area
XC26	this is an area rich in wildlife, and is fragile for marine mammals
XC28	All of these areas are important, including the shoreline.
XC29	We go to these areas. Very important for bird migration routes.
XC30	All important for birds. Support conservation in area.
XC31	Don't include in NMCA. Want to see a harbour, docks.

[illegible]

Norwest Planning Commission
Community Consultation Tour
Land Use Mapping Session

Location: _____
Region: _____
Date: _____
Community PIR: _____
Map #: _____

Form to conduct mapping session as informant:

1. <u>Joel Nashuk</u>	16. _____
2. <u>Adrian</u>	17. _____
3. <u>Cathy Gheran</u>	18. _____

5. _____	20. _____
6. _____	21. _____
7. _____	22. _____
8. _____	23. _____
9. _____	24. _____

11. _____	26. _____
12. _____	27. _____
13. _____	28. _____
14. _____	29. _____
15. _____	30. _____

Signature of Mapper: _____

A horizontal number line with arrows at both ends. It is marked with the numbers 40, 20, 0, 40, and 80. The line is divided into four equal segments by these tick marks.

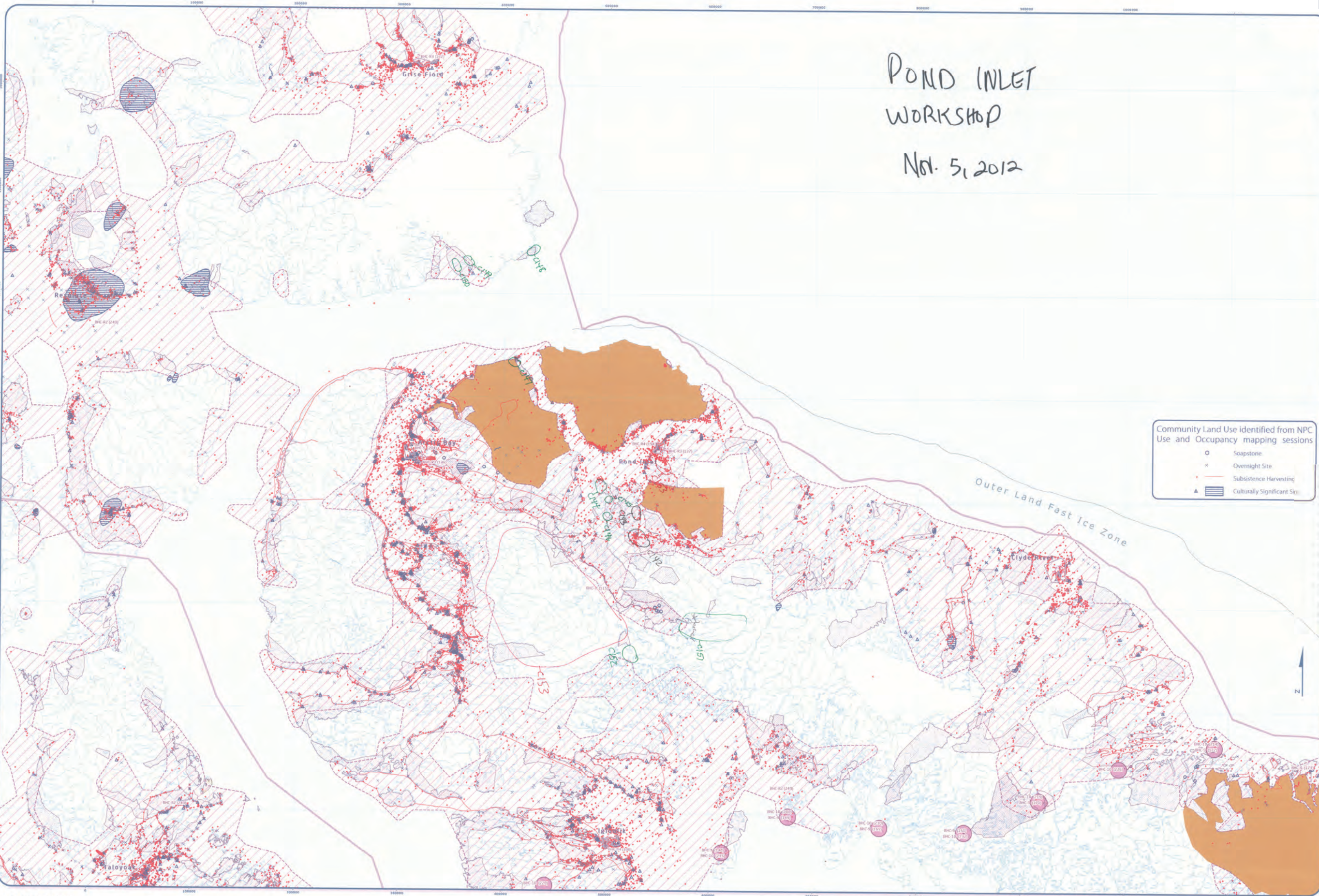
Coordinate System: EPSG 42304 LCC
Projection: Lambert Conformal Conic
Datum: North American 1983
False Easting: 0.0000


 as 701
 National Planning Commission
 Commission d'Aménagement du Niterov

Working Draft Sub-regional map data source
For Land Use Designations and Recommendations sources see draft Nuhavut Land Use Plan and background material data source document
Hillshade created by utilizing Swiss method in Hillshade toolbox courtesy of ESRI user forums water bod

50 hectares in size. Land outside of Nunavut, courtesy of Geogratis. Administrative boundaries consist of:
 - Inuit Owned Lands: courtesy of Nunavut Tunngavik Incorporated.
 - Territorial parks from the Government of Nunavut.
 - National Parks from Parks Canada.
 - Data for areas within municipal boundaries obtained from Natural Resources Canada cadastral data.
 - This map is to be used for reference purposes only by the AG.

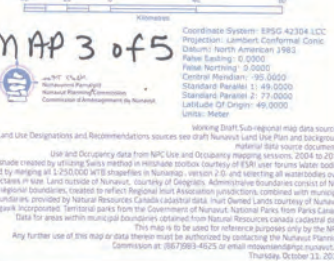
Commission at (867) 983-4025 or email mdownsend@nrc.ca on
Friday, October 05, 2012

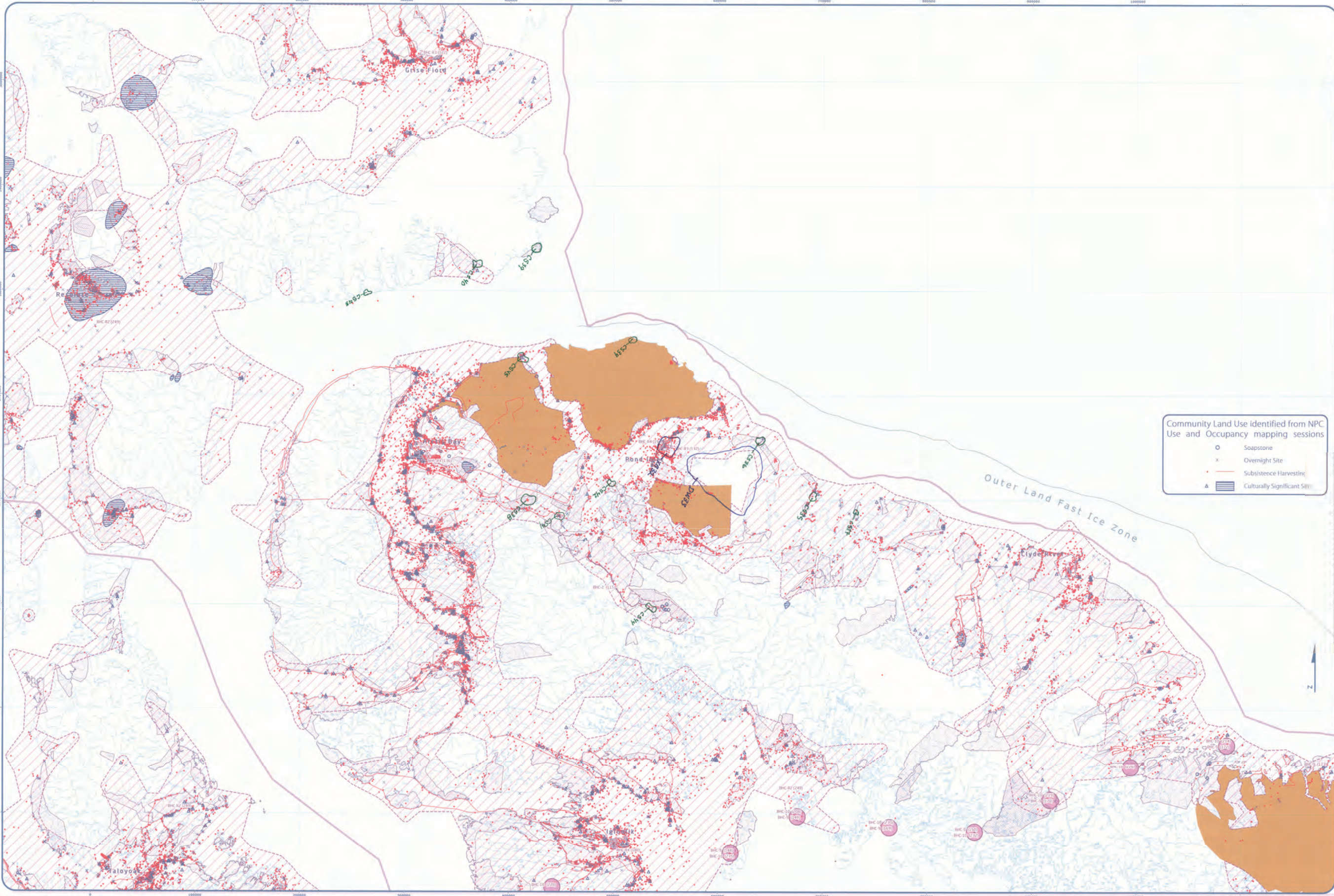


Designations	Permitted Uses	Prohibited Uses
BHC 1	Roads, Railways, Utilities and Corridors	
BHC 2	Roads, Railways, Utilities and Corridors	
BHC 3	All uses except those prohibited	Mining
BHC 4	High electrical and related infrastructure	
BHC 5	Residential, Commercial and Services, Municipal Services	
BHC 6	Municipal Services	All Other Uses
BHC 7	Municipal Services	
BHC 8	Recreation and Recreation Activities	All Other Uses
BHC 9	Recreation and Recreation Activities, SMO Operations and Activities	All Other Uses
BHC 10	SMO Operations and Activities	All Other Uses

Designations	Permitted Uses	Prohibited Uses
BHC 1	Roads, Railways, Utilities and Corridors	
BHC 2	Roads, Railways, Utilities and Corridors	
BHC 3	All uses except those prohibited	Mining
BHC 4	High electrical and related infrastructure	
BHC 5	Residential, Commercial and Services, Municipal Services	
BHC 6	Municipal Services	All Other Uses
BHC 7	Municipal Services	
BHC 8	Recreation and Recreation Activities	All Other Uses
BHC 9	Recreation and Recreation Activities, SMO Operations and Activities	All Other Uses
BHC 10	SMO Operations and Activities	All Other Uses

Code	Comments
C142	Fishing camp
C143	Area of flint
C144	Cape Hat, USA oil exploration there are contaminated sites
C145	Contaminated sites from USA oil exploration
C146	Contaminated sites from USA oil exploration
C147	Contaminated sites from USA oil exploration
C148	Contaminated sites from USA oil exploration
C149	Contaminated sites from USA oil exploration
C150	45 gallon barrels
C151	Hunting area important for protection
C152	Camping area and area where there are old fuel drums
C153	Hunting area important for protection
C154	Hunting Area important for protection





Community Land Use identified from NPC Use and Occupancy mapping sessions

- Soapstone
- x Overnight Site
- Subsistence Harvesting
- ▲ Culturally Significant Site



Legend for map features:

- Roads
- Established Parks (Land for Recreation not used)
- Inuit Owned Lands (On-surface)
- Inuit Owned Lands (Sub-surface)
- Administrative Boundary

Designations	Permitted Uses	Prohibited Uses
BHC-1	Roads, Railways, Utilities and Corridors	
BHC-2	Roads, Railways, Utilities and Corridors	
BHC-3	All uses except those prohibited	Mining
BHC-4	Hydro-electric and related infrastructure	
BHC-5	Science, Recreation and Research, Municipal Services	
BHC-6	Municipal Services	All Other Uses
BHC-7	Municipal Services	
BHC-8	Recreation and Recreation Activities	All Other Uses
BHC-9	Recreation and Recreation Activities, QMS Operations and Activities	All Other Uses
BHC-10	QMS Operations and Activities	All Other Uses

Reference Table for Recommendations	
BHC-B1	Project Proposals located in the Trustable River Area of Interest should take into account impacts on the cultural value of the area.
BHC-B2	Project Proposals located in areas of traditional and use should take into account impacts on the cultural value of the area.
BHC-B3	Project Proposals located in a community water supply watershed should take into account impacts on the quality and quantity of community drinking water.
BHC-B4	Project Proposals located in a Municipal Watershed should take into account impacts on wastewater safety.

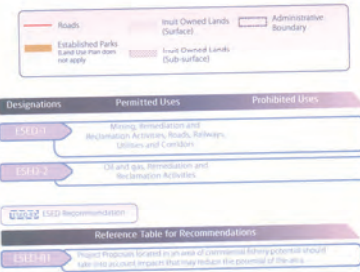
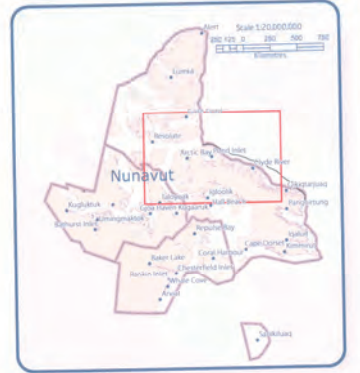
Code	Comments
XB32	Drinking water
DW33	Drinking water coming from glacier, concerned about contaminants settling in water supply.
CS34	very old barrels
CS35	barrels
CS36	barrels on the top of this hill
CS37	barrels on the top of this hill
CS38	oil drums
CS39	Petro Canada left many drums
CS40	contaminated lake (Kagisaujuk?)
CS41	Drums sank into lake
CS42	Old buildings, freezers.
CS43	drums
CS44	Drums sunk at Mary River. Plus propane. (known from elders) don't drink from this lake.
CS45	Old buildings



Coordinate System: EPSG:4326
Projection: Lambert Conformal Conic
Datum: North American 1983
Units: Meter
Scale: 1:1,000,000
Standard Parallel 1: 49.0000
Standard Parallel 2: 77.0000
Latitude Of Origin: 49.0000
Longitude Of Origin: -99.0000

Working Draft Sub-regional map data sources for Land Use Designations and Recommendations sources see draft Nunavut Land Use Plan and background information data source documents.
Use and Occupancy data from NPC Use and Occupancy mapping sessions, 2004 to 2011.
Watershed created by merging of 1:250,000 WTS shapefiles in Nunavut, version 2.0, and selecting all watersheds over 50 hectares in size within boundaries of Nunavut, including all Government of Nunavut boundaries and all NPC draft regional boundaries, updated to reflect Regional Inuit Association jurisdictions, combined with municipal boundaries, populated by National Resources Canada collected data. Inuit Owned Lands boundary of Nunavut Territories incorporated. Territorial parks from the Government of Nunavut, National Parks from Parks Canada.
Data for areas within municipal boundaries obtained from Nunavut Resources and/or other data sources.
This map is to be used for reference purposes only by the NPC.
Any further use of this map or data therein must be authorized by the Nunavut Planning Commission at (867) 993-4625 or email nunavutplanning@nunavut.ca
Thursday, October 11, 2012

Pond Inlet - Group 1 Results



Code	Comments
XD55	Polar bear hunting which is important to sports hunters
XD56	Lakes important for commercial fishing traditional fish traps, sorel (SP?), sweet berries.

This image shows a single sheet of white paper with horizontal blue lines, typical of notebook paper. The lines are evenly spaced and run across the width of the page. There is no handwriting or other markings on the paper.

Norwood Planning Commission
Community Solicitation Form
March 2006 Meeting

Community: _____
 Location: _____
 Region: _____
 Date: _____
 Community ID# _____
 Map # _____

Members of the Community carry a permission

Form to conduct mapping session as informants	
1. <u>Eligible Participant No.</u>	16
2. <u>IN ISSUE/ACTIVITY</u>	17
3. <u>Interviewer</u>	18
4. <u>Topic(s) / Date / Time etc.</u>	19
5. <u>Method(s) Used</u>	20
6. <u>Issues / Policy</u>	21
7. <u>Issues / Comments</u>	22
8. <u>ANALYSIS OUTCOME</u>	23
9. _____	24
10. _____	25
11. _____	26
12. _____	27
13. _____	28
14. _____	29
15. _____	30

Signature of Mapper: Allice

CONFIDENTIAL
(b)(5)(A), (b)(7)(C)
Human Resources Commission
XXX

Coordinate System: EPSG 42304
Projection: Lambert Conformal Conic
Datum: North American 1983
False Easting: 0.0000
False Northing: 0.0000
Central Meridian: -95.0000
Standard Parallel 1: 49.0000
Standard Parallel 2: 77.0000
Latitude of Origin: 49.0000
Units: Meter

M A P 4 o f S

Land Use Designations and Recommendations sources see draft Nunavut Land Use Plan and the material page 4 of 5

Hiladee created by utilizing Siles' System in Hiladee both countries of ESSE user forums like
 by merging all 1,250,000 1/4th trapezoids in Nunavut, version 2.0, and selecting all within
 50 sections in each. Land outside of Nunavut, countries of Georgia, Azerbaijan, Azerbaijan
 100 regional boundaries, created to reflect Regional Unit Association boundaries, combined
 boundaries, provided by Natural Resources Canada (cadastre data, Inuit Owned Lands (combined
 Nunavut incorporated. Territorial parcels not from Natural Resources Canada can
 Data for areas within municipal boundaries obtained from Natural Resources Canada can
 This map is to be used for reference purposes only
 Any further use of this map or data requires contacting the
 Commission at (867)893-4625 or email: nunavut@nrc.gc.ca
 Tuesday, October 12, 2010



M A P 4 o f S

Land Use Designations and Recommendations sources see draft Nunavut Land Use Plan and the material page 4 of 5

Hilulidate created by utilizing Slesing Smith's map in Hilulidate booklet of ESRI user forums link created by merging all 1,250,000 1:250,000 topographic maps in Nunavut, version 2.0, and selecting all within 50 hectares in given Land outside of Nunavut, courtesy of Geographic Information Systems Canada, and regional boundaries, created to reflect Regional Inuit Association boundaries, combined with boundaries provided by Natural Resources Canada (cadastre data). Inuit Owned Lands (combined with Nunavut Incorporated, Territorial parks and the Government of Nunavut, National Parks, from Parks Canada) Data for areas within municipal boundaries obtained from Natural Resources Canada.ca

This map is to be used for reference purposes only and is not intended for legal or planning purposes. Any further use of this map or data is the responsibility of the user.

Commission at (867)893-4625 or email: info@nunavut.ca

Tuesday, October 10, 2006





Designations	Permitted Uses	Prohibited Uses
ESED R1	Mining, Remediation and Restoration Activities, Roads, Railways, Utilities and Pipelines	
ESED R2	General use, Remediation and Restoration Activities	
ESED R3	Reference Table for Recommendations	

Code	Comments
XD46	Used to make money fishing at this lake.
XD47	all these areas you can get fish for commercial use. They have done studies. Could do more (?)
XD48	flow edge tourism is good for the community
XD49	flow edge tourism is good for the community
XD50	Research camps hire people.
XD51	commercial fishery potential (char)
XD52	commercial fishery potential (char)
XD53	commercial fishery potential (char) (Igloolikajut Lake)
XD54	commercial fishery potential (char) (Fish Lake)

CONFIDENTIAL

Community Name: _____

Location: _____

Region: _____

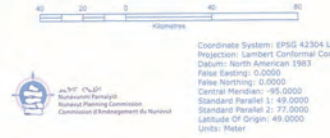
Community Profile: _____

Map # _____

Signatures of the Community (signify in permission to conduct mapping work on the map):

1. _____	16. _____
2. _____	17. _____
3. _____	18. _____
4. _____	19. _____
5. _____	20. _____
6. _____	21. _____
7. _____	22. _____
8. _____	23. _____
9. _____	24. _____
10. _____	25. _____
11. _____	26. _____
12. _____	27. _____
13. _____	28. _____
14. _____	29. _____
15. _____	30. _____

Signature of Mapper: _____



Working Draft Sub-regional map data sources: Material data source documents

Mapshade created by utilizing Swiss method in Hatched toolset courtesy of ESD user forums water bodies created by merging all 2,250,000 1/8 degree squares in Nunavut, version 2.0, and selecting all waterbodies over 50 hectares in size. Land outside of Nunavut, courtesy of Geogistics. Administrative boundaries courtesy of NPC 8th regional boundaries, created by Regional Inuit Association jurisdictions combined with municipal boundaries, provided by Natural Resources Canada cadastal data. Inuit Owned Lands courtesy of Nunavut Tunngavik Incorporated. Territorial parks from the Government of Nunavut. National Parks from Parks Canada. Data for areas within municipal boundaries obtained from Natural Resources Canada cadastal data.

This map is to be used for reference purposes only by the NPC. Data for areas within municipal boundaries must be authorized by contacting the Nunavut Planning Commission at (867)361-4625 or email [nrc@nunavut.ca](mailto:nrc@nrc.nunavut.ca)

Any further use of this map or data therein must be authorized by contacting the Nunavut Planning Commission at (867)361-4625 or email nrc@nunavut.ca

Tuesday, October 26, 2022

Legend:

- Roads
- Established Parks & Open Space (Use Plan does not apply)
- Inuit Owned Lands (Surface)
- Inuit Owned Lands (Sub-surface)
- Administrative Boundary

Designations	Permitted Uses	Prohibited Uses
(A) - All Land	All Land	

Code	Comments
MU57	Narwhale, bowhead whale area
MU58	Narwhale present. Sea mammals protection
MU60	Travel route

[illegible]

Nonrevot Planning Commission
Community Consultation Paper
Land Use Mapping Session

Community: _____
Location: _____
Region: _____
Date: _____
Community #168 _____


Participants of the Community signify a permission form to conduct mapping session as informants.

1	Ellyan Dhu Pailoon Chua	17
2	Cheng Guan Guan	18
3	Wah Theng Guan	18
4	Theresa Pong Guan	20
5	Wah Guan Guan	21
6	Wah Guan Guan	22
7	John Guan Guan	23
8		24
9		25
10		26
11		27
12		28
13		29
14		30
15		


Signature of Mapper: Deena

CONFIDENTIAL
C05D520454976
Nunavut Planning Commission
2021 0603

CONFIDENTIALITY BY ANP



 Kilometres



 National Planning Commission
 Gouvernement du Nouveau Brunswick
 Government of Newfoundland and Labrador

Coordinate System: EPSG 42304 (GC
 Projection: Lambert Conformal Conic
 Date: North American 1983
 False Easting: 0.0000
 False Northing: 0.0000
 Central Meridian: -95.0000
 Standard Parallel 1: 49.0000
 Standard Parallel 2: 77.0000
 Latitude Of Origin: 49.0000

[illegible]

Pond Inlet - Group 2 Results

Mixed Use



Code	Comments
MU56	Area must be protected. Concerned w increase in activities from Mary River project.

[illegible]Nunavut Planning Commission
Community Consultation Tour
Land Use Mapping Session

Community: _____
Location: _____
Region: _____
Date: _____

Community RNC _____
Map # _____

Signatures of the Community signify its permission
to conduct mapping session as in formants.

1.	Joan L. Nashook	16
2.	Joan L. Nashook	17
3.	Carly Elyah	18
4.	Elyah Elyah	19
5.		20
6.		21
7.		22
8.		23
9.		24
10.		25
11.		26
12.		27
13.		28
14.		29
15.		30

Signature of Magger:

CONFIDENTIALITY STAMP



23000000



2304' 00" N
2304' 00" E
Natuurplan Perimeter
National Planning Commission
Commissie d'Aanpak van de Natuur

Kilometres

Coordinate System: EPSG 4230
Projection: Lambert Conformal
Datum: North American 1983
False Easting: 0.0000
False Northing: 0.0000
Central Meridian: -95.0000
Standard Parallel 1: 49.0000
Standard Parallel 2: 77.0000
Latitude Of Origin: 49.0000
Units: Meter

For Land Use Designations and Recommendations sources see the Natural Land Use Plan and
 Municipal Data sources
 Hatched created by outlining Swiss methods in Hatched toolbar controls of GISV user forums
 created by merging a 1:250,000 MCR base map, 1:50,000 aerial photos, 2:50,000 and selected
 50 hectares in size. Land Use Methods, courtesy of Geographic Administrative boundaries
 of regional boundaries, created to reflect Regional Unit Association jurisdictions, combined with
 boundaries, provided by Natural Resources Canada (national data). From Natural Lands
 Turnkey incorporated. Territorial parks from the Government of Nunavut, National Parks (PA)
 data for areas within municipal boundaries obtained from Natural Resources Canada
 This map is to be used for reference purposes only
 Any further use of this map or data therein must be authorized by the Canadian Council
 Commission on (867) 939-4625 or its authorized information
 Tuesday, July 1, 2014

Appendix 5: Wrap Up Session

A small group of participants returned to identify additional important areas during the wrap up session.

POND INLET, NV.
WORKSHOP - wrap up
Nov. 6/12



Legend:

- Roads
- Private Land
- Government Land
- Inuit Owned Lands (Surface)
- Inuit Owned Lands (Sub-surface)
- Administrative Boundary

Designations

Designations	Permitted Uses	Prohibited Uses
PA-1	Tourism, Recreation, Research	All Other Uses
PA-2	Tourism, Recreation, Research	
PA-3	Tourism, Recreation, Research, Marine Industries, Marine Communications and Electrical Cables	

Reference Table for Recommendations	
01	Project Proposals to avoid in a key bird habitat, size should take into account impacts on the migratory birds that rely on the area.
02	Project Proposals located in historic carbon-caking grounds should take into account impacts on carbon-caking, fish-caking and migration routes.
03	Project Proposals located in and/or near known karsts or caving areas should take into account impacts that may impede the ability of alluvium to drain the site.
04	Project Proposals located in portions of the Great Bear Lake watershed to favourer should take into account impacts that may impact that may reduce the concentration value of the watershed.

Code	Comments
XP02	Bird area is also important for caribou calving.


P-SAN GOYA
Front Left

Community: _____
 Region: _____
 Date: _____
 Community #/HS #: _____

Signatures of the Community signify as permission form to conduct mapping session as informants.

1
2
3
4
5
6
7
8
9
10
11
12
13
14
15

16
17
18
19
20
21
22
23
24
25
26
27
28
29
30

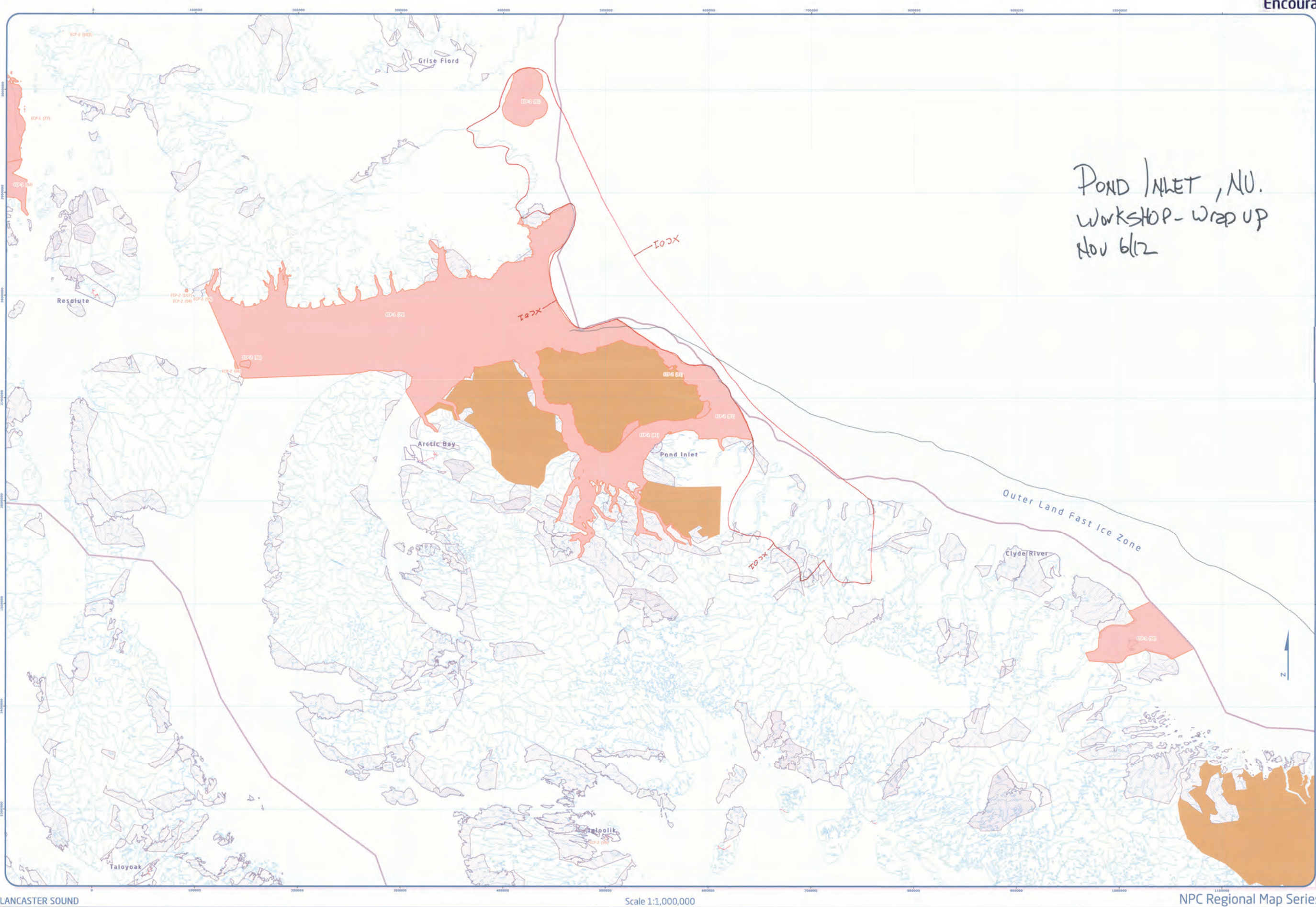
A handwritten signature, possibly 'D', is written across the left page. It starts on line 4, loops around to touch line 10, and then extends horizontally across the gutter to the right page, ending on line 24.

Signature of Napper: _____

CONFIDENTIALITY OF AAR

Coordinate System: EPSG 42304 LCC
Projection: Lambert Conformal Conic
Datum: North American 1983
False Easting: 0.0000
False Northing: 0.0000
Central Meridian: -95.0000
Standard Parallel 1: 49.0000
Standard Parallel 2: 77.0000
Latitude Of Origin: 49.0000
Units: Meter

This map was created by utilizing Swiss method in Hiltabaide toolset. The data sources used are as follows:
 • Data Descriptions and Recommendations sources are draft Nunavut Land Use Plan and background information data source documents.
 • Administrative boundaries were obtained from Statistics Canada's administrative boundaries by merging all 250,700 VUW shapefiles in Nunavut - version 2.0, and selecting all watersheds over 60 km² in size. Land outside of Nunavut, courtesy of Geogratis. Administrative boundaries courtesy of NRC Canada.
 • Municipal boundaries, relative to the Nunavut coastline, were obtained from Statistics Canada's industries, produced by Natural Resources Canada cadastral data, until Owned Lands courtesy of Nunavut web Incorporated. Territorial parks from the Government of Nunavut, National Parks from Parks Canada
 Data for each watershed municipal boundaries obtained from Statistics Canada.
 This map is to be used for reference purposes only by the NRC.
 Any further use of this map or data therein must be authorized by contacting the Nunavut Planning Commission at (867)983-4625 or email nrc@nunavut.ca
 Thursday, October 04, 2012



POND INLET, NU.
WORKSHOP - wrap up
Nov 6/12



Designations	Permitted Uses	Prohibited Uses
ECP-1	Traditional Subsistence Harvesting	All Other Uses
ECP-2	Traditional Subsistence Harvesting	All Other Uses

ECP Recommendations

Code	Comments
ECP-1	Project Proponent should in addition have a Heritage Team should take into account the guidelines and criteria contained in the Heritage Work Management plan.

Code	Comments
XC01	Wants to extend NMCA (shown on 8.5x11). We value this area extremely for whales, seals as it is a migration route. I would like to see that area will always have wildlife.

Blank lines for additional comments or notes.

P. SAIBOYA
Robert Angluk

Nunavut Planning Commission
Community Consultation Team
Land Use Mapping Service

Community:
Location:
Region:
Date:
Community Name:
Map No.:

Signatures of the Community signify as permission
to conduct mapping sessions as follows:

1.	16
2.	17
3.	18
4.	19
5.	20
6.	21
7.	22
8.	23
9.	24
10.	25
11.	26
12.	27
13.	28
14.	29
15.	30

Signature of Mapper:

CONFIDENTIALITY D-6007



Coordinate System: EPSG 42304, UTM
Projection: Lambert Conformal Conic
Datum: North American 1983
False Easting: 0.0000
False Northing: 0.0000
Central Meridian: -95.0000
Standard Parallel 1: -49.0000
Standard Parallel 2: -77.0000
Latitude Of Origin: 49.0000
Units: Meter

Working Draft Sub-regional map data sources:
For Land Use Designations and Recommendations sources see Draft Nunavut Land Use Plan and background
information data source documents.
Hillshade created by utilizing SRTM30plus method in Hillshade toolset courtesy of ESRI user forum letter toolset
created by merging all 2.5x2.5km SRTM30plus in Nunavut, version 2.0, and selecting all watersheds over
50 hectares in size. Land outside of Nunavut, courtesy of Geomatics Canada. Administrative boundaries consist of NPC
draft regional boundaries, created to reflect Regional Inuit Association jurisdictions, combined with Municipal
boundaries, provided by Natural Resources Canada collected data. Inuit Owned Lands courtesy of Nunavut
Territorial Government. Territorial parks from the Government of Nunavut, National Parks from Parks Canada.
Data for areas within Municipal boundaries obtained from Natural Resources Canada collected data.
Any further use of this map or data therein must be authorized by consulting the Nunavut Planning
Commission at (867)983-4545 or email npwman@npw.nunavut.ca
Friday, 10 October 2012



Scale 1:1,000,000

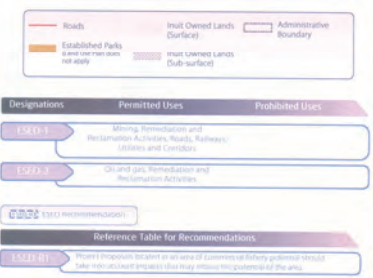
NPC Regional Map Series



Reference Table for Recommendations	
PH-K-01	Project proposals located in the floodplain from Area of Interest should take into account impacts on the cultural value of the area.
PH-K-02	Project proposals located in areas of traditional and/or sacred lands should take into account impacts on the cultural value of the area.
PH-K-03	Project proposals located in a community water supply watershed should take into account impacts on the quality and quantity of community drinking water.
PH-K-04	Project proposals located in a municipal firewater should take into account impacts on firewater supply.

P. SINGH
Robert Singh

[illegible]



Code	Comments
XD09	Commercial fishing area. Don't want to see any kind of activity
XD10	Commercial fishing area
XP11	Polar bear sport hunting. Don't want to see any kind of activity
XP12	Polar bear sport hunting. Don't want to see any kind of activity
XP13	We would like to see a wild life refuge. Area where residents of Pond Inlet do most of their hunting, don't want to see any activity in the area.
XP14	Ships should be given strict rules and maybe even charged for going through this area.
XP15	Ships should be given strict rules and maybe even charged for going through this area.

POND INLET, NU.
WORKSHOP - Wrap-up
Nov. 5/12

①

Community Mapping Session
Community Consultation Flow-
card One Mapping Session

Community: _____
Location: _____
Region: _____
Date: _____
Community Area: _____
Map # _____

Signatures of the Community signify its permission for me to conduct mapping session as an informant.


1.	_____	24.	_____
2.	_____	25.	_____
3.	_____	26.	_____
4.	_____	27.	_____
5.	_____	28.	_____
6.	_____	29.	_____
7.	_____	30.	_____
8.	_____	31.	_____
9.	_____	32.	_____
10.	_____	33.	_____
11.	_____	34.	_____
12.	_____	35.	_____
13.	_____	36.	_____
14.	_____	37.	_____
15.	_____	38.	_____
16.	_____	39.	_____
17.	_____	40.	_____
18.	_____		
19.	_____		

Signature of Mapper: _____

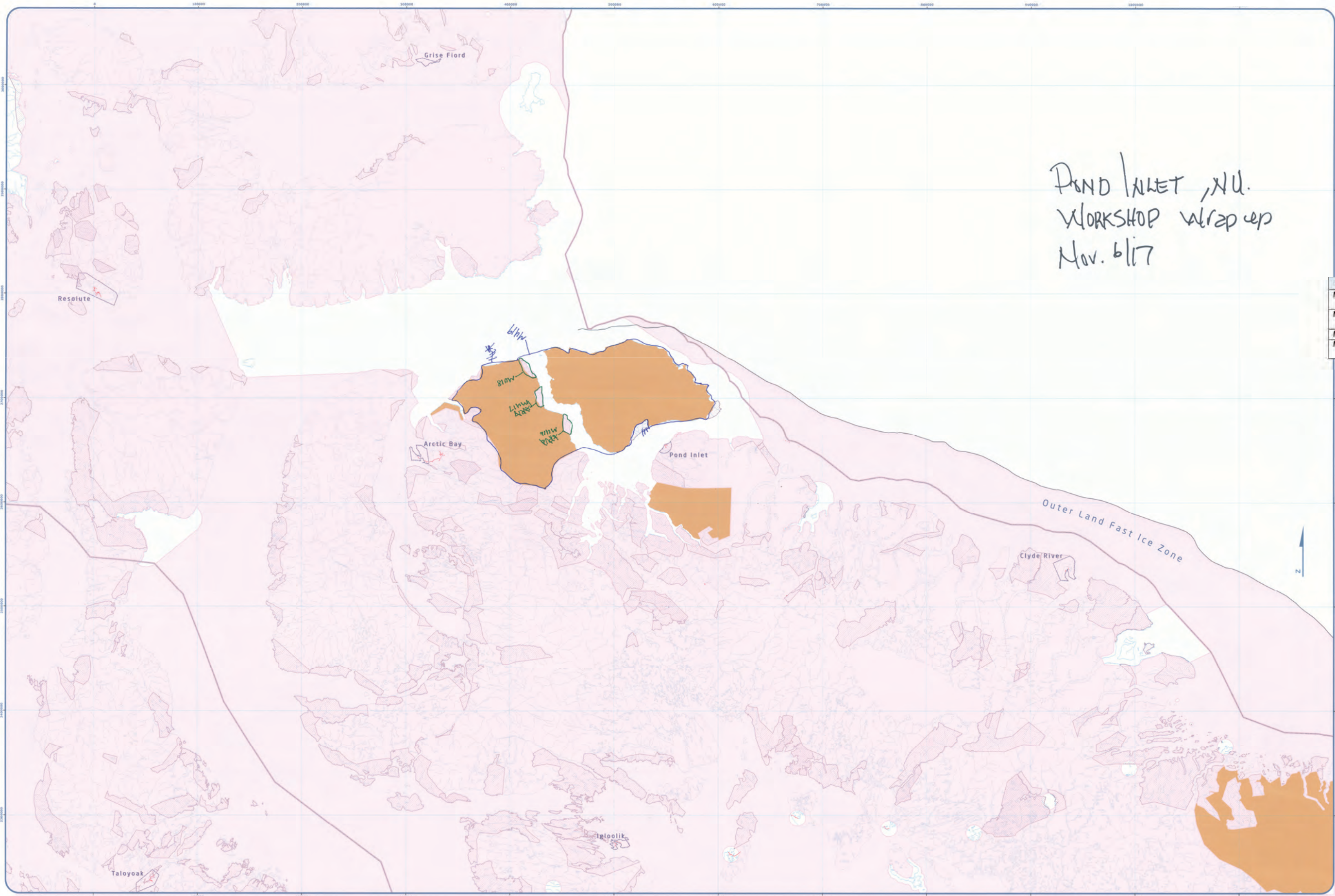
CONFIDENTIALITY or ANON

40 20 0 40 80
Kilometres

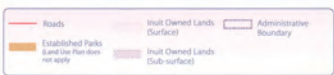
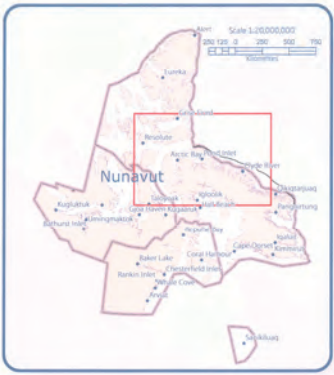
Coordinate System: EPSG:42304 LCC
Projection: Lambert Conformal Conic
Datum: North American 1983
False Easting: 0.0000
False Northing: 0.0000
Central Meridian: -95.0000
Standard Parallel 1: 49.0000
Standard Parallel 2: 77.0000
Latitude Of Origin: 49.0000
Units: Meter

 **Government of Nunavut**
Nunavut Planning Commission
Commission d'aménagement du Nunavut

Working Draft Sub-regional map data sources:
For Land use Designations and Recommendations sources see draft Nunavut Land Use Plan and background material data source documents.
Hillsshade created by Hillshade Swits method in Hillsshade toolset of ESRI ArcView version 3.25a
Created by merging all 1:250,000 NTM shapefiles in Nunavut, version 2.0; and selecting all waterbodies covered by SO Factors in size land outside of Nunavut, courtesy of Geographic Administrative boundaries country of NPC and National Resources Canada (NRC) Natural Resources Canada (NRC) Natural Resources Canada (NRC) boundaries, provided by Natural Resources Canada (NRC) Natural Resources Canada (NRC) Natural Resources Canada (NRC) Territories incorporated. Territorial parks from the Government of Nunavut, National Parks from Parks Canada Data for areas within municipal boundaries obtained from Statistics Canada (Statistics Canada).
This map is to be used for reference purposes only by the NPC.
Any further use of this map or data therein must be authorized by contacting the Nunavut Planning Commission at: (867)789-4825 or email nunavutplanning@nrc.ca
Friday, October 05, 2012



POND INLET, NU.
WORKSHOP wrap up
Nov. 6/17



Code	Comments
MU16	don't want tourists. Need to be more controlled. Not go where they want.
MU17	don't want tourists. New park. Draws lots of tourists.
MU18	don't want tourists.
MU19	Have to be protected, even though it is a park.

[Handwritten signature]

P. S. Bilco

Ruth Holt

Nunavut Planning Commission
Community Consultation Year
Land Use Mapping Section

Community:
Location:
Region:
Date:
Community #/NA:
Map #:

Signatures of the Community (city or permission form to conduct mapping session as in form):

1.	16.
2.	17.
3.	18.
4.	19.
5.	20.
6.	21.
7.	22.
8.	23.
9.	24.
10.	25.
11.	26.
12.	27.
13.	28.
14.	29.
15.	30.

Signature of Mapper:

CONFIDENTIALITY OF DATA

Appendix 6: Follow-up Meeting

The NPC returned to the community to review a draft version of this report with the Hamlet Council, Hunters and Trappers Organization, and Community Lands and Resource Committee. The meeting included:

- A presentation of a draft version of this report
- An overview of the mapped information that was recorded for each topic:
 - Protecting and Sustaining the Environment
 - Encouraging Conservation Planning
 - Building Healthier Communities
 - Encouraging Sustainable Economic Development
 - Mixed Use
- Potential changes to the classification of a few mapped areas were discussed and agreed to.
- General discussion and comments including:
 - The current around Bylot Island usually travels counter clockwise. Current is a concern if there was an oil spill. But winds are usually from the east so an oil spill would be carried by the wind into Milne Inlet.
 - The western end of Bylot Island is the goose area NOT the east
 - In spring time the narwhal arrive and this whole area is a calving area. Button point waters from June July august September the narwhal are calving.
 - Itirilaq, just past button point. There is a cliff point and the Hudson Bay Company used to have a building there and the lands are privately held. This is an old traditional hunting area and ownership of the area by HBC is disturbing to Inuit.
 - Cruise ships are becoming even more of a concern. Cruise ships should not be allowed in the area while Baffinland is operational.

- Private yachts even have helicopters and they don't just bother the wildlife, the noise from cruise ships parked in the area is a nuisance to the residents.
- Cruise ships are a waste of time. They do not support us financially. Some of the people go ashore on Parks lands. Those small sail boats need to be included in the draft plan. They contribute very little. Perhaps if we made them pay to come ashore that would benefit us more. Soldiers are also coming more and more. War ships, more than one comes. Perhaps the federal government could create a regulation that all ships be kept out of the area for about 5 years.
- Research should be done to identify archaeological sites where whalers used to use the sites. Franklin was in the area. Research needs to be done to find these sites. Just the ribs of the old ships are left now but the whalers did affect the lives of Inuit greatly.
- Traditional areas and travel routes need to be clearly mapped. We have traveled to Resolute by dog teams. We looked at sod houses. Inuit were there way before anyone else. Inuit have travelled all over the north and this needs to be documented.
- There is a place near Button point where they rendered their whale fat and they stayed at Mount Peroidy (sp?). There is writing on the rocks that the whalers left behind. We need to look into this.
- Discussion on grandfathering and changes to the plan once it is approved.

- Three additional areas were identified on a map:

