

Summary of Community Meetings on the
Draft Nunavut Land Use Plan
PANGNIRTUNG
November 26-27, 2012



Nunavut Planning
Commission



Revised - August 2013

Contents

Introduction.....	3	Appendix 1: Open House	17
1.1 Context	3	Appendix 2: Elected Officials Meeting	18
1.2 Purpose.....	3	Appendix 3: Questions and Answers	19
1.3 Methodology.....	3	Appendix 4: Community Workshop Scanned Maps	20
1.4 Public Awareness	3	Appendix 5: Wrap Up Session	36
1.5 Community Population and Participation.....	3	Appendix 6: Follow-up Meeting	38
 Protecting and Sustaining the Environment	4		
2.1 Areas presented to participants.....	4		
2.2 Areas identified by participants	4		
2.3 Areas of importance to Protecting and Sustaining the Environment..	4		
 Encouraging Conservation Planning.....	6		
3.1 Areas presented to participants	6		
3.2 Areas identified by participants	6		
3.3 Areas of importance to Encouraging Conservation Planning	6		
 Building Healthier Communities	8		
4.1 Areas presented to participants.....	8		
4.2 Areas identified by participants	8		
4.3 Areas of importance to Building Healthier Communities	8		
 Encouraging Sustainable Economic Development.....	10		
5.1 Areas presented to participants.....	10		
5.2 Areas identified by participants	10		
5.3 Areas of importance to Encouraging Sustainable Economic Development	10		
 Mixed Use	12		
6.1 Areas identified in the Draft Plan	12		
6.2 Areas identified by participants	12		
 Overlapping Goals	15		
7.1 Areas identified for multiple goals	15		

Chapter 1: Introduction

1.1 Context

The Nunavut Planning Commission (NPC) is preparing a land use plan to guide and direct resource use and development in the Nunavut Settlement Area (NSA). As part of its efforts, the NPC is facilitating discussions in each Nunavut community on land use and resource management issues. Information that is obtained from these discussions will be used to inform decisions regarding the further development of the Nunavut Land Use Plan (NLUP).

1.2 Purpose

This report presents information obtained during the NPC's visit to the community of Pangnirtung. The purpose of the report is to inform decisions regarding the further development of the NLUP, ensuring that the plan reflects the priorities and values of residents.

It is important to note that the information contained in the Community Report will be considered in conjunction with all other feedback when revising the DNLUP.

1.3 Methodology

Information was presented to and received from participants in Pangnirtung in accordance with the Nunavut Planning Commission's Community Engagement Strategy (Engagement Strategy). The Engagement Strategy provides for the following methods for presenting and receiving information;

- **Open house;** information contained in the Draft Nunavut Land Use Plan (DNLUP) was presented on 7 multi lingual large format poster boards. Participants were encouraged to review the posters, ask questions and provide feedback. Comments and questions were recorded by NPC staff and are contained in Appendix 1.
- **Elected Officials Meeting;** The NPC Chairperson and NPC staff met with senior and elected officials in the community. The development process for the DNLUP, its content and next steps were presented.

Comments and questions were recorded during the session and are contained in Appendix 2.

- **Public Workshop;** A formal presentation of the Draft Plan content was provided to participants, including a slide overview of its content. Following the presentation, questions and comments were received from participants. The questions, comments and responses are contained in Appendix 3.
- **Wrap Up Session;** Staff was available to discuss the areas identified during the mapping and identify any additional issues or areas of interest. Information received during this session was recorded by NPC staff and is included in Appendix 5.

Areas that participants identified during mapping sessions as important to a particular goal have, in the majority of cases, been included in this report as they were recorded. In instances where participants identified an area that was better suited to another goal, the area has been reclassified to the more suitable goal and has been verified as appropriate to do so by the Community.

A follow-up meeting was held on April 15, 2013 to review a draft version of this report with the Hamlet Council, Hunters and Trappers Organization, and Community Lands and Resource Committee. A summary of this meeting is included in Appendix 6.

1.4 Public Awareness

The NPC raised public awareness regarding its visit to Pangnirtung in accordance with the Engagement Strategy.

The DNLUP and supporting materials were mailed to the Mayor and Council of Pangnirtung, the Hunters and Trappers Organizations (HTO) in September 2012. In addition, letters of invitation were sent to the Pangnirtung Mayor and Council and HTO in advance of the NPC's visit to advise of the meetings and to encourage participation. Follow up phone calls were also made.

Public notice of the various events was provided in the following ways:

- **Nunatsiaq News and Nunavut News/North;** notice of community meetings were posted in both newspapers a minimum of 45 days in advance.
- **Co-op cable TV;** notice of community meetings was run a minimum of 45 days in advance for one week and run again for no less than 14 days before the meetings.
- **Community radio;** notices were read by the hosts and a live interview with the Commission Chairperson was conducted.
- **Community bulletin boards;** notices were posted on bulletin boards around the community 45 days and again 14 days in advance of the meetings.
- **Community mail drop;** one page flyers that announced the meetings and their purpose were delivered to the post office in each community for all mail boxes that accept unaddressed ad-mail.
- **nunavut.ca;** the schedule of community visits, the Draft Plan, and all supporting information was available on the Commission's website.

1.5 Community Population and Participation

Pangnirtung is a community of approximately 1425 people (Statistics Canada. 2011 Census). It is located on the eastern coast of Baffin Island (see Figure 1).

The Commission visited the community on November 26-27, 2012. All events occurred as scheduled. The sessions were attended as follows;

- **Elected Officials Meeting;** the Mayor and members of the Hamlet Council and HTO attended the elected officials meeting.
- **Open house;** approximately 40 people attended the open house to review the Draft Plan.
- **Public Workshop;** approximately 60 people attended the presentation of the DNLUP and facilitated mapping sessions. Information was recorded in three separate mapping groups.
- **Wrap Up Session;** approximately 10 people attended the wrap up session.



Figure 1. Location of Pangnirtung

Chapter 2: Protecting and Sustaining the Environment

Protecting and Sustaining the Environment was one of five topics presented to and discussed by participants during the Open House, Elected Officials Meeting, Public Workshop and Wrap up Session, collectively referred to in this document as information sharing and gathering sessions.

2.1 Areas presented to participants

During the information sharing and gathering sessions, participants were presented the following areas and issues as important to Protecting and Sustaining the Environment.

- Key bird habitat sites
- Caribou Habitat sites
- Atlantic Cod Lakes
- Cumulative Impacts
- Transboundary considerations
- Climate change

The importance of these issues and areas to Protecting and Sustaining the Environment was not disputed by participants during the information sharing and gathering sessions.

2.2 Areas identified by participants

Additional areas and issues were identified by participants as important to Protecting and Sustaining the Environment during the information sharing and gathering sessions. These additional areas are;

- Clearwater Fiord
- Marine mammals
- Caribou habitat
- Areas of wildlife abundance
- Bird habitat

2.3 Areas of importance to Protecting and Sustaining the Environment

Areas and issues discussed during the information sharing and gathering sessions as important to Protecting and Sustaining the Environment are illustrated on Map 1, including areas identified in the DNLUP and areas identified by the community. Scanned images of the maps on which community feedback was recorded can be found in Appendix 4.

Based on discussions with participants, the NPC understands that:

- The areas identified on Map 1 are considered by the Community to be important to Protecting and Sustaining the Environment.
- In these areas, the community would like the NLUP to encourage activities that support environmental protection and management needs, including wildlife conservation, protection and management.

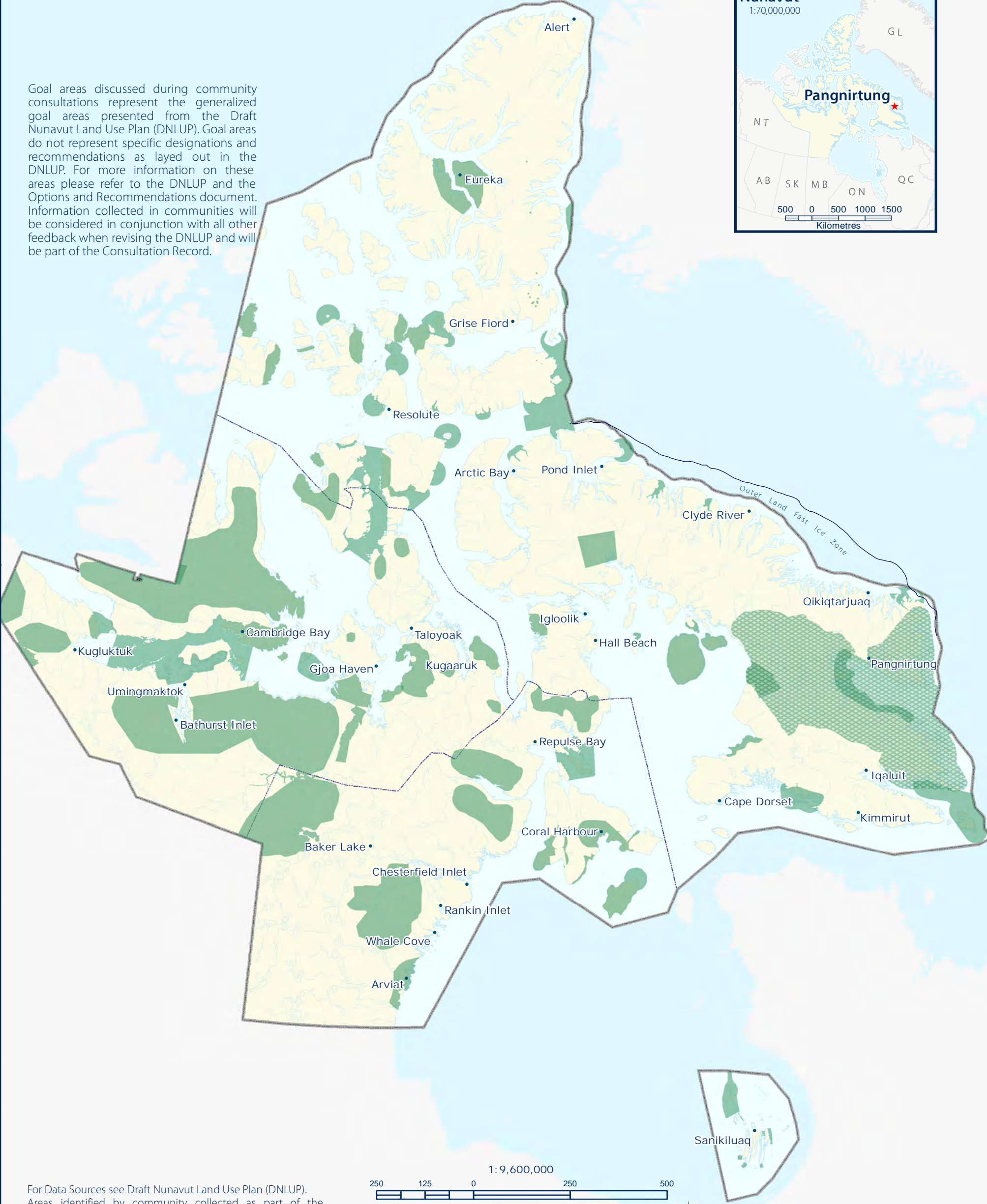
This feedback will be considered in conjunction with all other feedback when revising the DNLUP.



PSE Goal areas from the DNLUP discussed during community consultations

Additional PSE Goal areas identified during community consultations

Goal areas discussed during community consultations represent the generalized goal areas presented from the Draft Nunavut Land Use Plan (DNLUP). Goal areas do not represent specific designations and recommendations as layed out in the DNLUP. For more information on these areas please refer to the DNLUP and the Options and Recommendations document. Information collected in communities will be considered in conjunction with all other feedback when revising the DNLUP and will be part of the Consultation Record.



For Data Sources see Draft Nunavut Land Use Plan (DNLUP). Areas identified by community collected as part of the Nunavut Planning Commissions Community Engagement Strategy during the Mapping Sessions for the DNLUP on November 26 & 27, 2012. Maps were digitized at the Nunavut Planning Commission. To be used for illustration purposes only as part of the Draft Nunavut Land Use Plan Consultation Process.

2501250250500

1:9,600,000

Kilometres

ᓄᓇᓂᓄᓐ ᐸᓇᓂᓄᓐ

Nunavunmi Parnaiyit

Nunavut Planning Commission

Commission d'Aménagement du Nunavut

Projection: Canada Lambert Conformal Conic, NAD83
Produced by the Nunavut Planning Commission: (867)983-4625, npc@nunavut.ca
June-24-13

Chapter 3: Encouraging Conservation Planning

Encouraging Conservation Planning was one of five topics presented to and discussed by the participants during the information sharing and gathering sessions.

3.1 Areas presented to participants

During the information sharing and gathering sessions, participants were presented the following areas and issues as important to Encouraging Conservation Planning;

- National Parks Awaiting Full Establishment
- Proposed National Parks
- National Marine Conservation Areas
- Thelon Wildlife Sanctuary
- Migratory Bird Sanctuaries
- National Wildlife Areas
- National Historic Sites
- Territorial Historic Sites
- Heritage Rivers

The importance of these issues and areas to Encouraging Conservation Planning was not disputed by participants during the information sharing and gathering sessions.

3.2 Areas identified by participants

Additional areas and issues were identified by participants as important to Encouraging Conservation Planning during the information sharing and gathering sessions. These additional areas are.

- Clearwater Fiord
- Historic camps

- Historic Rivers

3.3 Areas of importance to Encouraging Conservation Planning

Areas and issues discussed during the information sharing and gathering sessions as important to Encouraging Conservation Planning are illustrated on Map 2, including areas identified in the DNLUP and areas identified by the community. Scanned images of the maps on which community feedback was recorded can be found in Appendix 4.

Based on discussions with participants, the NPC understands that:

- The areas identified on Map 2 are considered by the Community to be important to Encouraging Conservation Planning.
- In these areas, the community would like the NLUP to encourage activities that support environmental protection and management needs, including wildlife conservation, protection and management.

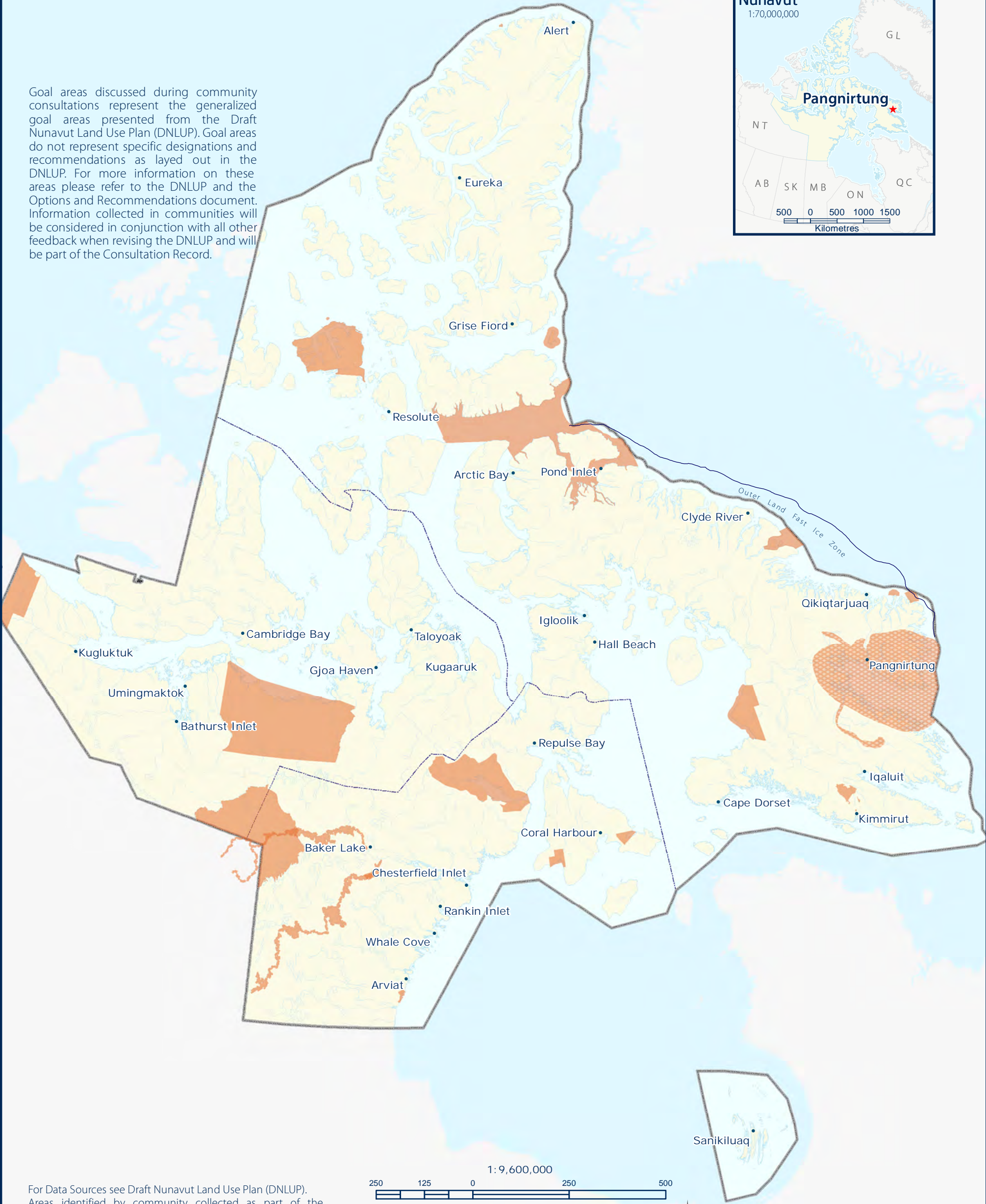
This feedback will be considered in conjunction with all other feedback when revising the DNLUP.



 ECP Goal areas from the DNLUP discussed during community consultations

 Additional ECP Goal areas identified during community consultations

Goal areas discussed during community consultations represent the generalized goal areas presented from the Draft Nunavut Land Use Plan (DNLUP). Goal areas do not represent specific designations and recommendations as layed out in the DNLUP. For more information on these areas please refer to the DNLUP and the Options and Recommendations document. Information collected in communities will be considered in conjunction with all other feedback when revising the DNLUP and will be part of the Consultation Record.



For Data Sources see Draft Nunavut Land Use Plan (DNLUP). Areas identified by community collected as part of the Nunavut Planning Commissions Community Engagement Strategy during the Mapping Sessions for the DNLUP on November 26 & 27, 2012. Maps were digitized at the Nunavut Planning Commission. To be used for illustration purposes only as part of the Draft Nunavut Land Use Plan Consultation Process.



ᓄᓇᓂᓄᓐ ᐸᓐᓇᓐᓂᓐ
Nunavunmi Parnaiyiit
Nunavut Planning Commission
Commission d'Aménagement du Nunavut



Projection: Canada Lambert Conformal Conic, NAD83
Produced by the Nunavut Planning Commission: (867)983-4625, npc@nunavut.ca
June-24-13

Chapter 4: Building Healthier Communities

Building Healthier Communities was one of five topics presented to and discussed by the participants during the information sharing and gathering sessions.

4.1 Areas presented to participants

During the information sharing and gathering sessions, participants were presented the following areas and issues as important to Building Healthier Communities;

- Areas of Community Interest
- Community Land Use
- Transportation Infrastructure
- Unincorporated Communities
- Alternative Energy Sources
- Community drinking water supplies
- Land remediation
- Northern Contaminated Sites Program
- Aerodromes
- Canadian Forces Station
- Northern Warning System sites

The importance of these issues and areas to Building Healthier Communities was not disputed by participants.

4.2 Areas identified by participants

Additional areas and issues were identified by participants as important to contributing to the goal of Building Healthier Communities during the information sharing and gathering sessions. These additional areas are;

- Drinking water

- Hunting areas
- Contaminated sites

4.3 Areas of importance to Building Healthier Communities

Areas and issues discussed during the information sharing and gathering sessions as important to Building Healthier Communities are illustrated on Map 3, including areas identified in the DNLUP and areas identified by the community. Scanned images of the maps on which community feedback was recorded can be found in Appendix 4.

Based on discussions with participants, the NPC understands that:

- The areas identified on Map 3 are considered by the Community to be important to Building Healthier Communities.
- In these areas, the community would like the NLUP to encourage activities that support community needs and cultural priorities.

This feedback will be considered in conjunction with all other feedback when revising the DNLUP.





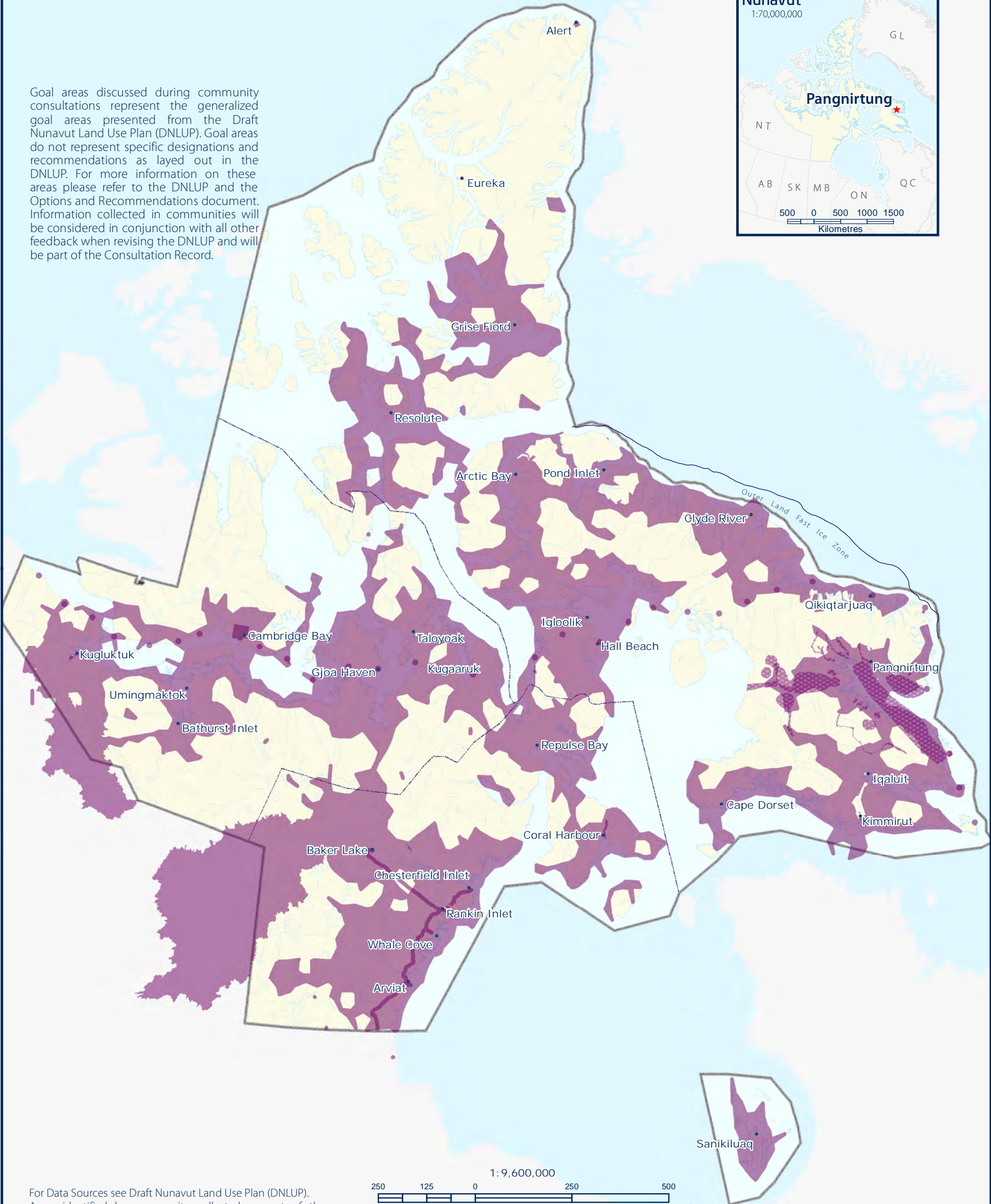
BHC Goal areas from the DNLUP discussed during community consultations



Additional BHC Goal areas identified during community consultations

Goal areas discussed during community consultations represent the generalized goal areas presented from the Draft Nunavut Land Use Plan (DNLUP). Goal areas do not represent specific designations and recommendations as laid out in the DNLUP. For more information on these areas please refer to the DNLUP and the Options and Recommendations document. Information collected in communities will be considered in conjunction with all other feedback when revising the DNLUP and will be part of the Consultation Record.

Nunavut
1:70,000,000



For Data Sources see Draft Nunavut Land Use Plan (DNLUP). Areas identified by community collected as part of the Nunavut Planning Commissions Community Engagement Strategy during the Mapping Sessions for the DNLUP on November 26 & 27, 2012. Maps were digitized at the Nunavut Planning Commission. To be used for illustration purposes only as part of the Draft Nunavut Land Use Plan Consultation Process.



ᑎᓄᓐᓂᓐ ᑕᓄᓐᓂᓐ
Nunavunmi Parnaiyit
Nunavut Planning Commission
Commission d'Aménagement du Nunavut

Projection: Canada Lambert Conformal Conic, NAD83
Produced by the Nunavut Planning Commission: (867)983-4625, npc@nunavut.ca
June-24-13

Chapter 5: Encouraging Sustainable Economic Development

Encouraging Sustainable Economic Development was one of five topics presented to and discussed by the participants during the information sharing and gathering sessions.

5.1 Areas presented to participants

During the information sharing and gathering sessions, participants were presented with the following areas important to Encouraging Sustainable Economic Development;

- Mineral Exploration and Production
- Oil and Gas Exploration
- Commercial Fisheries

The importance of these issues and areas to Encouraging Sustainable Economic Development was not disputed by participants during the information sharing and gathering sessions.

5.2 Areas identified by participants

Additional areas and issues were identified by participants as important to Encouraging Sustainable Economic Development during the information sharing and gathering sessions. The additional areas identified are;

- Commercial fisheries
- Soapstone quarries

5.3 Areas of importance to Encouraging Sustainable Economic Development

Areas and issues discussed during the information sharing and gathering sessions as important to Encouraging Sustainable Economic Development are illustrated on Map 4, including areas identified in the DNLUP and areas identified by the community. Scanned images of the maps on which

community feedback was recorded can be found in Appendix 4.

Based on discussions with participants, the NPC understands that:

- The areas identified on Map 4 are considered by the Community to be important to Encouraging Sustainable Economic Development.
- In these areas, the community would like the NLUP to encourage activities that support economic opportunities and needs.

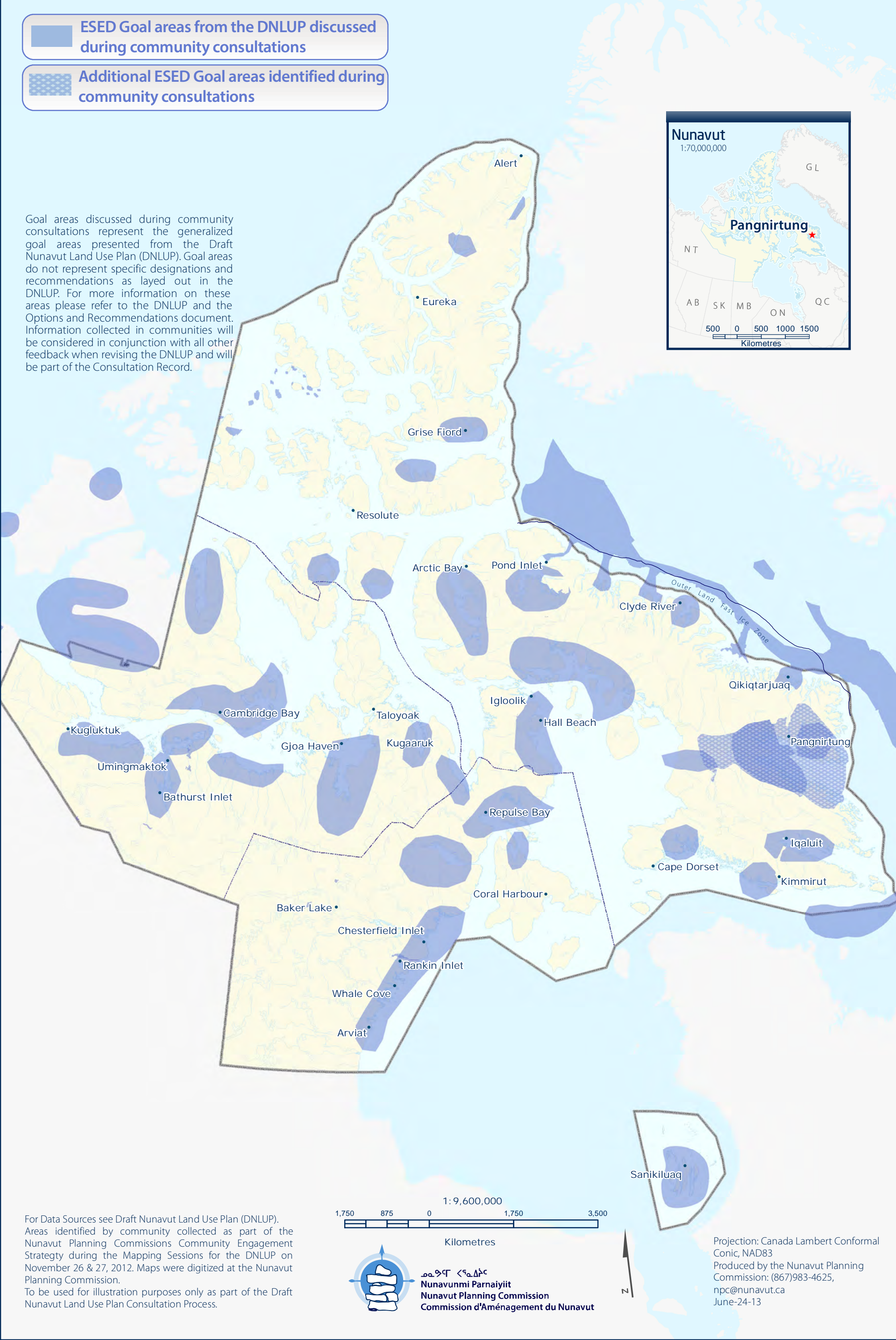
This feedback will be considered in conjunction with all other feedback when revising the DNLUP.



ESED Goal areas from the DNLUP discussed during community consultations

Additional ESED Goal areas identified during community consultations

Goal areas discussed during community consultations represent the generalized goal areas presented from the Draft Nunavut Land Use Plan (DNLUP). Goal areas do not represent specific designations and recommendations as layed out in the DNLUP. For more information on these areas please refer to the DNLUP and the Options and Recommendations document. Information collected in communities will be considered in conjunction with all other feedback when revising the DNLUP and will be part of the Consultation Record.



For Data Sources see Draft Nunavut Land Use Plan (DNLUP). Areas identified by community collected as part of the Nunavut Planning Commissions Community Engagement Strategy during the Mapping Sessions for the DNLUP on November 26 & 27, 2012. Maps were digitized at the Nunavut Planning Commission. To be used for illustration purposes only as part of the Draft Nunavut Land Use Plan Consultation Process.

1,750 875 0 1,750 3,500

Kilometres

ᓄᓇᓂᓄᓐ ᐸᓇᓂᓄᓐᓐ

Nunavunmi Parnaiyiit

Nunavut Planning Commission

Commission d'Aménagement du Nunavut

Projection: Canada Lambert Conformal Conic, NAD83
Produced by the Nunavut Planning Commission: (867)983-4625, npc@nunavut.ca
June-24-13

6.1 Areas identified in the Draft Plan

The DNLUP identifies areas important for a variety of uses. These areas were presented to participants during the workshop as Mixed Use Areas. These areas, as they occur around the community, are illustrated on Map 5.

6.2 Areas identified by participants

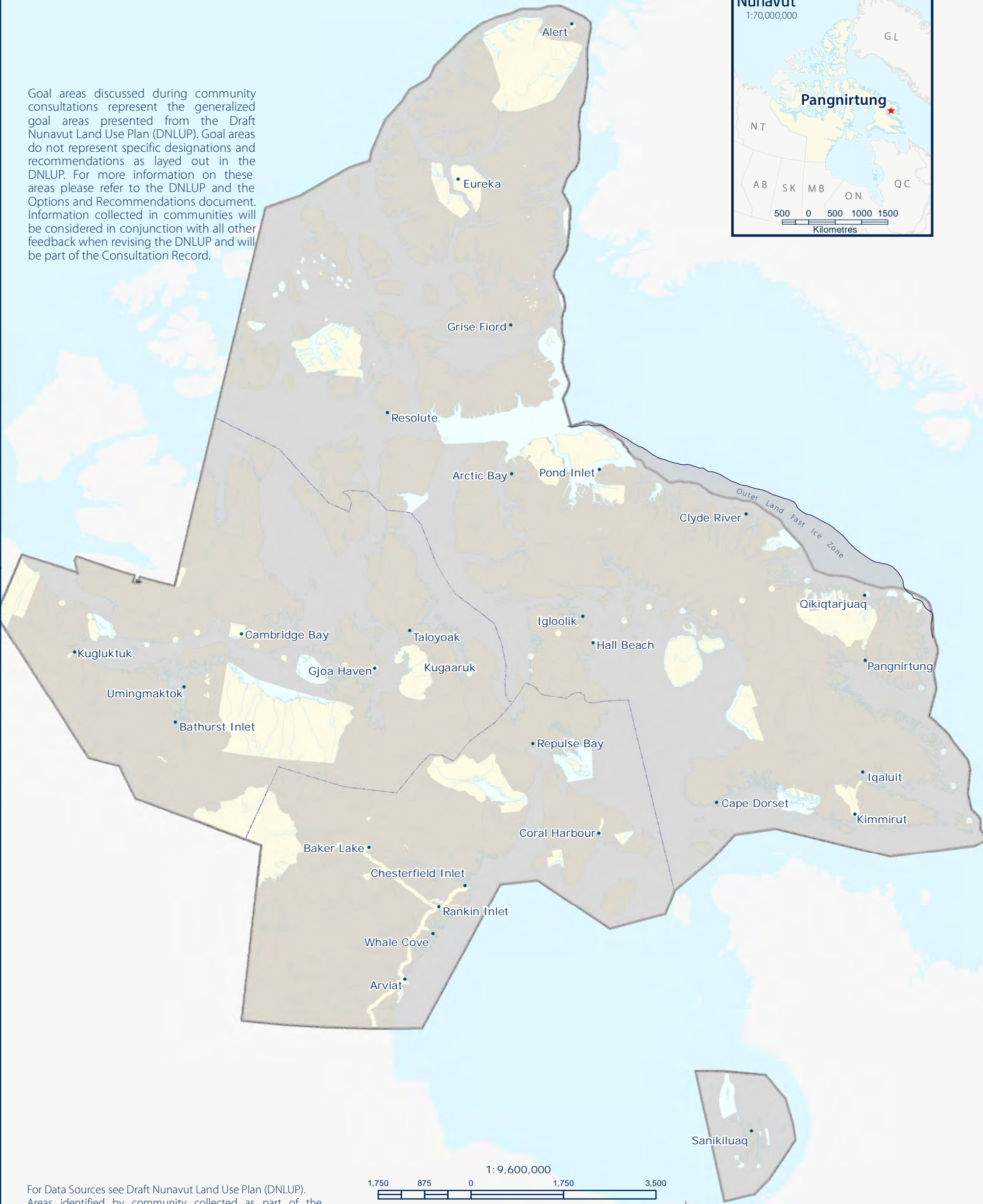
No additional areas were identified as Mixed Use by participants. However, some areas identified as Mixed Use in the DNLUP were considered by participants to require additional protection because of their particular qualities. These areas and the goals they are important for are identified on Map 6.





MU Goal areas from DNLUP discussed during community consultations

Goal areas discussed during community consultations represent the generalized goal areas presented from the Draft Nunavut Land Use Plan (DNLUP). Goal areas do not represent specific designations and recommendations as layed out in the DNLUP. For more information on these areas please refer to the DNLUP and the Options and Recommendations document. Information collected in communities will be considered in conjunction with all other feedback when revising the DNLUP and will be part of the Consultation Record.



For Data Sources see Draft Nunavut Land Use Plan (DNLUP). Areas identified by community collected as part of the Nunavut Planning Commissions Community Engagement Strategy during the Mapping Sessions for the DNLUP on November 26 & 27, 2012. Maps were digitized at the Nunavut Planning Commission. To be used for illustration purposes only as part of the Draft Nunavut Land Use Plan Consultation Process.



ᓄᓇᓂᓄᓐ ᐸᓄᓐᓂᓐ
Nunavunmi Parnaiyiit
Nunavut Planning Commission
Commission d'Aménagement du Nunavut



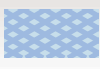
Projection: Canada Lambert Conformal Conic, NAD83
Produced by the Nunavut Planning Commission: (867)983-4625, npc@nunavut.ca
June-24-13



Additional PSE Goal areas identified during community consultations

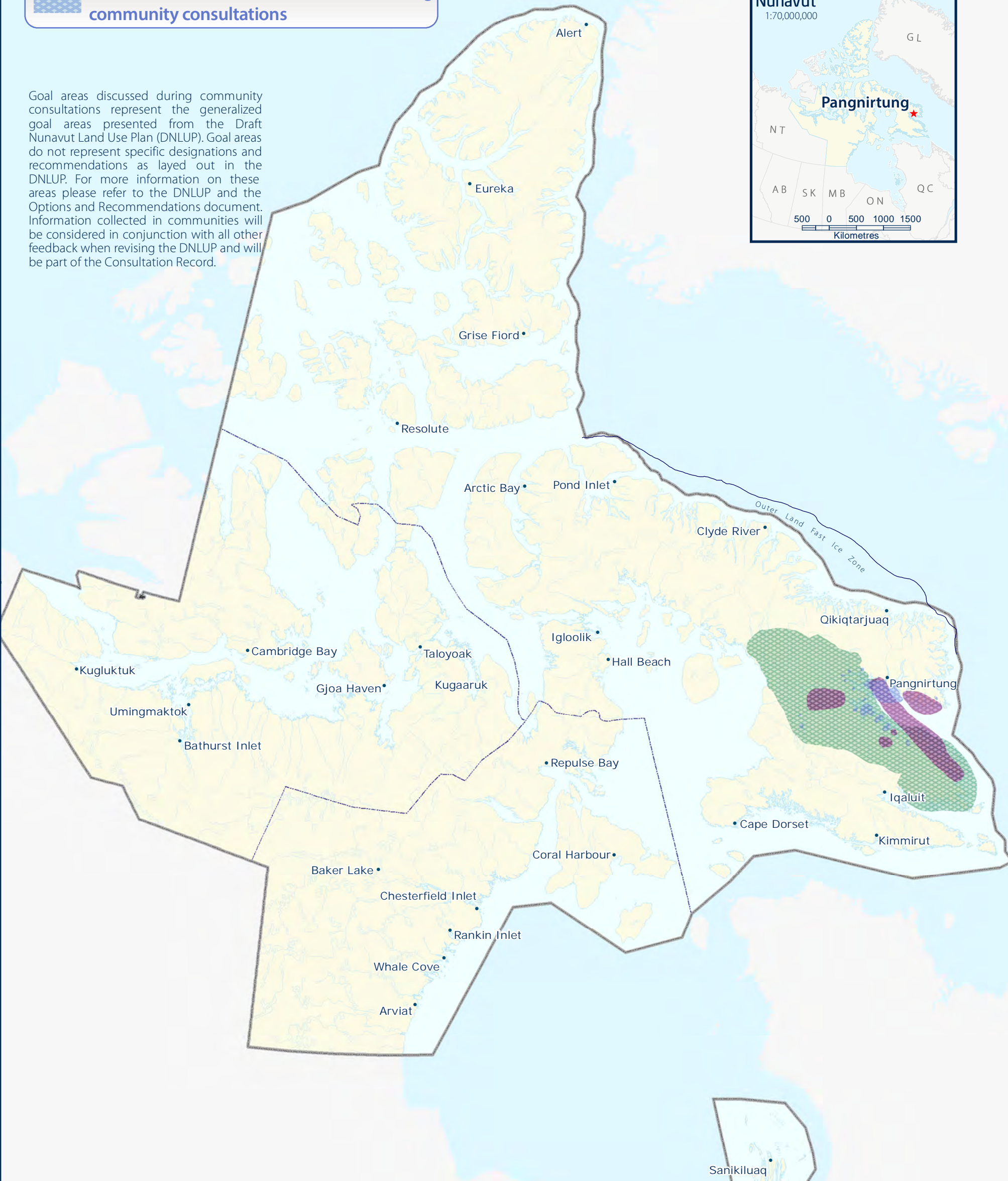


Additional BHC Goal areas identified during community consultations



Additional ESED Goal areas identified during community consultations

Goal areas discussed during community consultations represent the generalized goal areas presented from the Draft Nunavut Land Use Plan (DNLUP). Goal areas do not represent specific designations and recommendations as layed out in the DNLUP. For more information on these areas please refer to the DNLUP and the Options and Recommendations document. Information collected in communities will be considered in conjunction with all other feedback when revising the DNLUP and will be part of the Consultation Record.



For Data Sources see Draft Nunavut Land Use Plan (DNLUP). Areas identified by community collected as part of the Nunavut Planning Commissions Community Engagement Strategy during the Mapping Sessions for the DNLUP on November 26 & 27, 2012. Maps were digitized at the Nunavut Planning Commission. To be used for illustration purposes only as part of the Draft Nunavut Land Use Plan Consultation Process.



Nunavunmi Parnaiyiit
Nunavut Planning Commission
Commission d'Aménagement du Nunavut



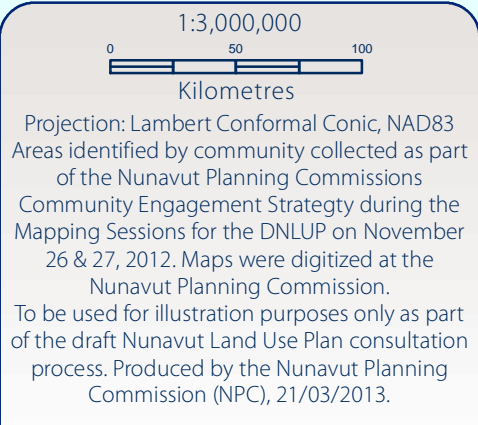
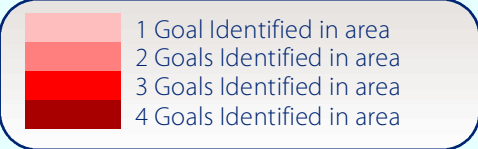
Projection: Canada Lambert Conformal
Conic, NAD83
Produced by the Nunavut Planning
Commission: (867)983-4625,
npc@nunavut.ca
September-09-13

7.1 Areas identified for multiple goals

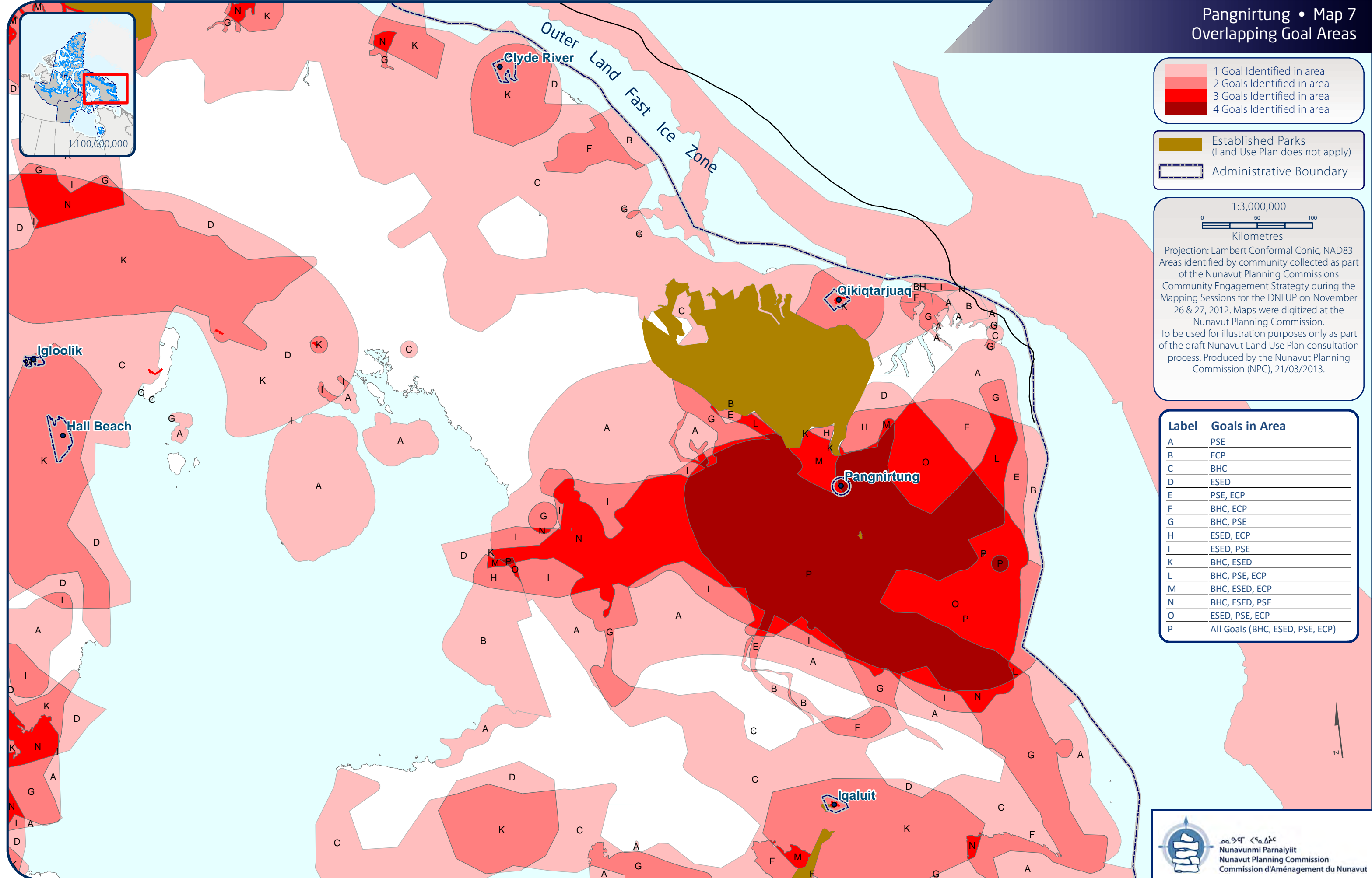
All areas discussed with the community as important for a particular goal are shown on Map 7. In some instances, areas have been identified as important for multiple goals. These areas, and the specific goals they are important to, are also shown on Map 7. In these areas, the NPC will take all of the identified goals and all other feedback into consideration when revising the DNLUP.



Pangnirtung • Map 7
Overlapping Goal Areas



Label	Goals in Area
A	PSE
B	ECP
C	BHC
D	ESED
E	PSE, ECP
F	BHC, ECP
G	BHC, PSE
H	ESED, ECP
I	ESED, PSE
K	BHC, ESED
L	BHC, PSE, ECP
M	BHC, ESED, ECP
N	BHC, ESED, PSE
O	ESED, PSE, ECP
P	All Goals (BHC, ESED, PSE, ECP)



Appendix 1: Open House

During the open house, participants raised the following issues:

- Peregrine Diamonds is bothering on south Cumberland Sound (flights, sampling, drilling). It is a hunting area.
- Turbot fishery going on for 30 years in Cumberland Sound. It is a very important source for the community.
- Public, Inuit need to be notified better of proposals. By the time Public and Inuit find out about projects the project has already been permitted. We need to have a say in the development before it is permitted.
- Better communication needed between all the regulators



Appendix 2: Elected Officials Meeting

The elected officials meeting was attended by the Mayor and members of the Hamlet Council and HTO. During the meeting, participants raised the following issues:

- Concerned with not being asked before activities take place. Thanked the Commission for asking what the community thinks.
- Shipping noise is an issue, migration routes are being disrupted
- The community has a gravel source and soapstone areas outside the municipal boundary
- Concerned with cruise ships



Appendix 3: Questions and Answers

During the community workshop, there was a question and answer period, which included a discussion of the following topics:

- Are water and sea areas where there may be an oil spill included in the land use plan?
 - The Commission answered that the land use plan includes water bodies, and concerns regarding shipping and spills will be recorded.



Appendix 4: Community Workshop Scanned Maps

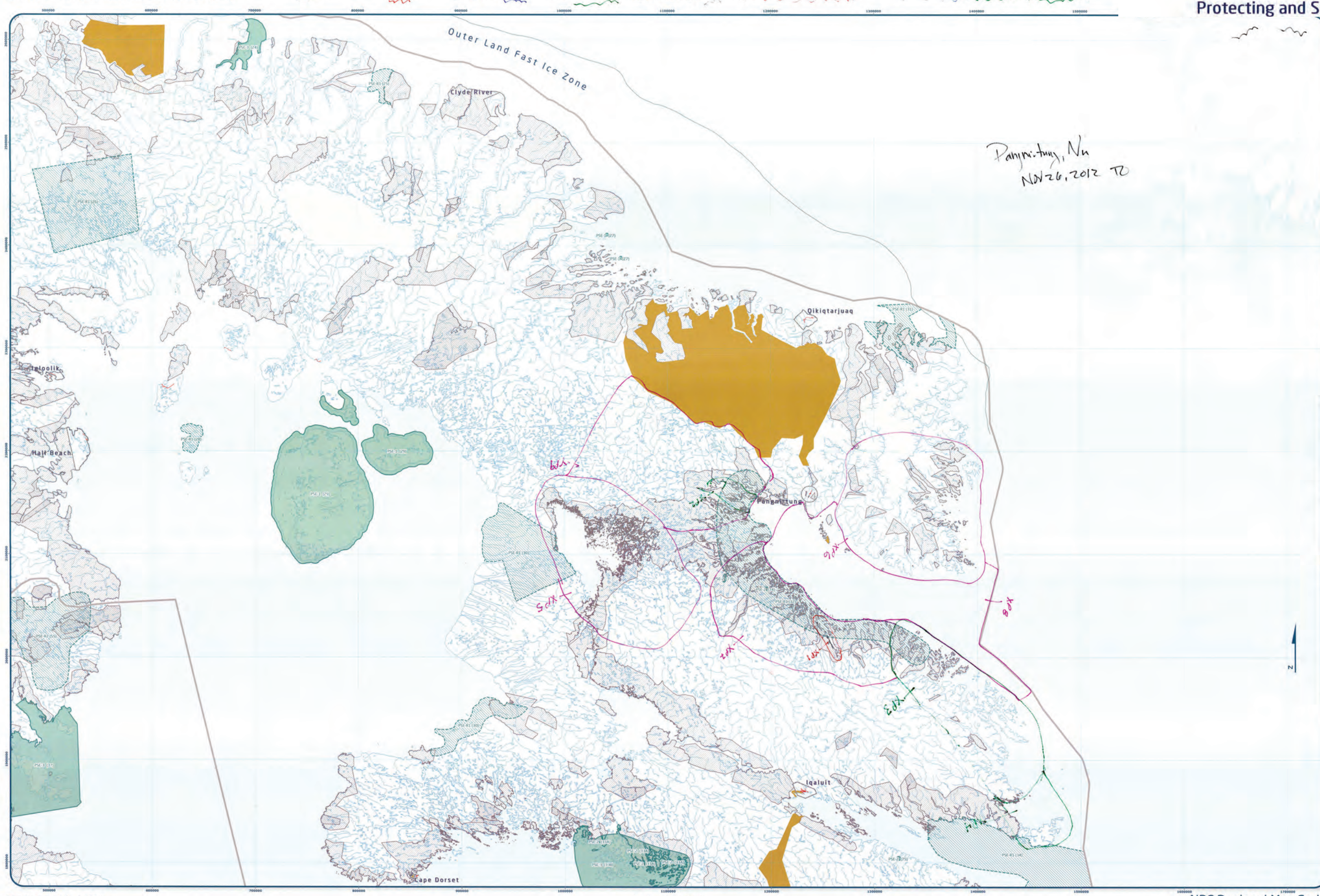
Three groups completed the mapping session to identify important areas. This Appendix contains the maps that were used by participants to identify areas that are important to the following land use planning goals:

- Protecting and Sustaining the Environment
- Encouraging Conservation Planning
- Building Healthier Communities
- Encouraging Sustainable Economic Development
- Mixed Use

Also included on each map is a reference table that includes the specific values that were identified for the area.

During the mapping portion of the community workshop, the following concerns were raised that did not apply to a specific area that was identified on the maps:

- The selling of art is important to the community.
- The commercial fishery is important to this community.
- There should be no oil and gas in fishery quota areas in Baffin Bay.
- Told story about going to Chidliak mine 2 to 3 years ago. There used to be caribou there but now she sees only one there.
- Group 2 was not concerned about the Encouraging Conservation map, and didn't mark any areas.
- Don't want mines near Pangnirtung.
- Don't want cruise ships going into fiords. Worried about disturbing wildlife and damaging environment.
- All fishing areas are important.



Pangnirtung, Nu
Nov 26, 2012 TZ



Designations	Permitted Uses	Prohibited Uses
XP1	Science, Recreation, Research	All other Uses
XP2	Science, Recreation, Research	All other Uses
XP3	Science, Recreation, Research, Marine Communications and Electric Cables	All other Uses

Reference Table for Recommendations	
XP1-01	Project Proposals located in a Key Bird Habitat Site should take into account impacts on the migratory birds that rely on the area.
XP1-02	Project Proposals located in historic Caribou Calving Grounds should take into account impacts on caribou calving, post calving sites and migration routes.
XP1-03	Project Proposals located in and/or near known caribou sea ice crossing areas should take into account impacts that may impede the ability of caribou to cross the ice.
XP1-04	Project Proposals located in portions of the Great Bear Lake watershed in Nunavut should take into account transboundary impacts that may reduce the conservation value of the watershed.

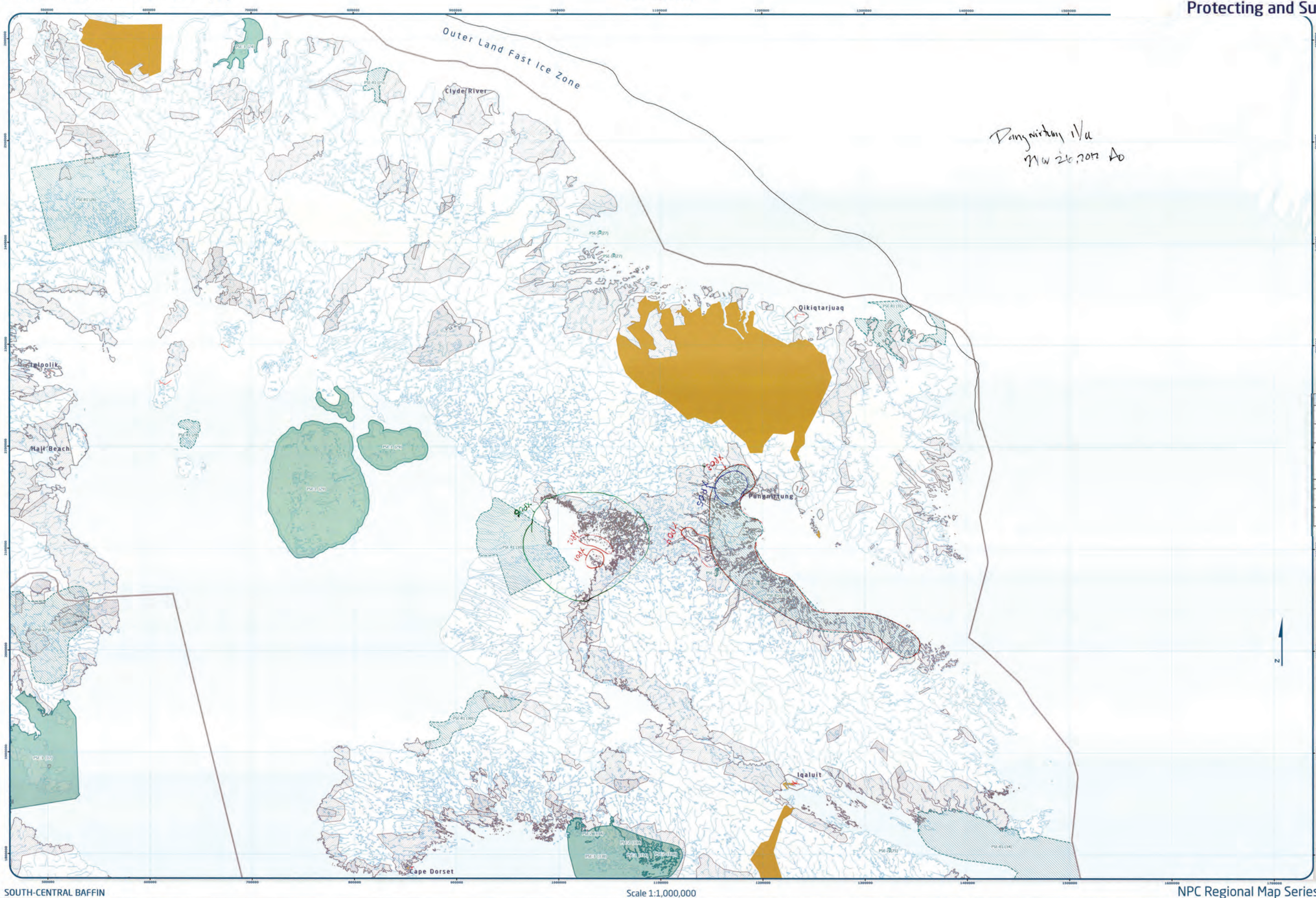
Code	Comments
XP1	No activity in this area. Land and sea area for animals and community use.
XP2	Clearwater Fiord - beluga calving and migrating area. Want area protected. Shoreline protected. Bird nesting. Lots of wildlife. Walrus, caribou.
XP3	Shipping in this area should be curbed. It is calving ground for BW. Plenty of sea mammals in this area, including ring seals.
XP4	Lot of sea mammals, fishes of all sort, good turbot and char fishing area, marine traffic should be kept to a minimum.
XP5	Nettilling (Natsilik) Lake needs to be protected. Teeming with wildlife, including fish, caribou, even land loacked seals. Very unique and beautiful area.
XP6	Want protection for walrus, polar bears, fish, seals, narwhals. Want this area protected as much as possible.
XP7	This area should be protected from mineral exploration because of the abundant wildlife (including polar bears, walrus, seals, caribou, fish). Fresh water lakes in this area need protection. There are caribou in this area for community food source. Minera exploration should be non-existent or very limited.
XP8	Very rich in wildlife, especially marine mammals. Also lots of cod and char.
XP9	this area has lot of caribou, the lakes have lots of fish, it is a migratory route for caribou and lot of birds nest in this area.

Signature of Minister
Date



Map 1 of 5
Coordinate System: SP95 42304 LCC
Projection: Lambert Conformal Conic
Datum: North American 1983
False Easting: 0.0000
Central Meridian: -95.0000
False Northing: 0.0000
Standard Parallel 1: 49.0000
Standard Parallel 2: 77.0000
Latitude Of Origin: 49.0000
Units: Meter

Working Draft Sub-regional map data sources:
Draft Nunavut Land Use Plan and background material data source documents.
Habitat created by digitizing Swiss method in Hatched bottom covering of ESR user forms water bodies created by merging all 1:250,000 WTS shapefiles in Nunavut, version 2.0, and selecting all waterbodies over 50 hectares in size. Land outside of Nunavut, courtesy of Geoparc. Administrative boundaries consist of NRC draft regional boundaries, created to reflect Regional Trust Association jurisdictions, combined with municipal boundaries, provided by Natural Resources Canada cadastre data. Inuit Owned Lands courtesy of Nunavut Tunngavik Incorporated. Territorial parks from the Government of Nunavut, National Parks from Parks Canada. Data for areas within municipal boundaries obtained from Natural Resources Canada cadastre data.
This map is to be used for reference purposes only by the NRC.
Any further use of this map or data therein must be authorized by contacting the Nunavut Planning Commission at (867) 963-4625 or email: nunavutplanning@nrc.ca
Friday, November 09, 2012



Pangnirtung 1/4
NW 26, 2017 AD



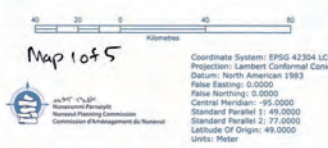
Designations	Permitted Uses	Prohibited Uses
PSE-1	Tourism, Recreation, Research	All Other Uses
PSE-2	Tourism, Recreation, Research	
PSE-3	Tourism, Recreation, Research, Marine Infrastructure, Marine Communications and Electrical Cables	

Reference Table for Recommendations	
PSE-1	Project Proposals located in a Key Bird Habitat site should take into account impacts on the migratory birds that rely on the area.
PSE-2	Project Proposals located in known caribou calving grounds should take into account impacts on caribou calving, deer calving areas and migration routes.
PSE-3	Project Proposals located in or near known caribou sites to calving areas should take into account impacts that may impede the ability of caribou to cross the ice.
PSE-4	Project Proposals located in portions of the Outer Land Fast Ice Zone should take into account impacts that may reduce the conservation value of the watersheds.

Code	Comments
XP01	Arctic tern and caribou habitat (just want it marked, not for restricting development)
XP02	Arctic tern and caribou habitat (just want it marked, not for restricting development)
XP03	Eider ducks, sea gulls, speckled belly and other birds (cliffs). Caribou habitat. Protect this area from development. Don't disturb the wildlife.
XP04	Bird habitat around lakes.
XP05	Migration of beluga whales and birthing area.
XP06	Caribou habitat. Protect this area from development. Don't disturb the wildlife.

Signature of the Community signatory as per the
from the community signatory as per the

Signature of Mayor:



Pangnirtung - Group 3 Results



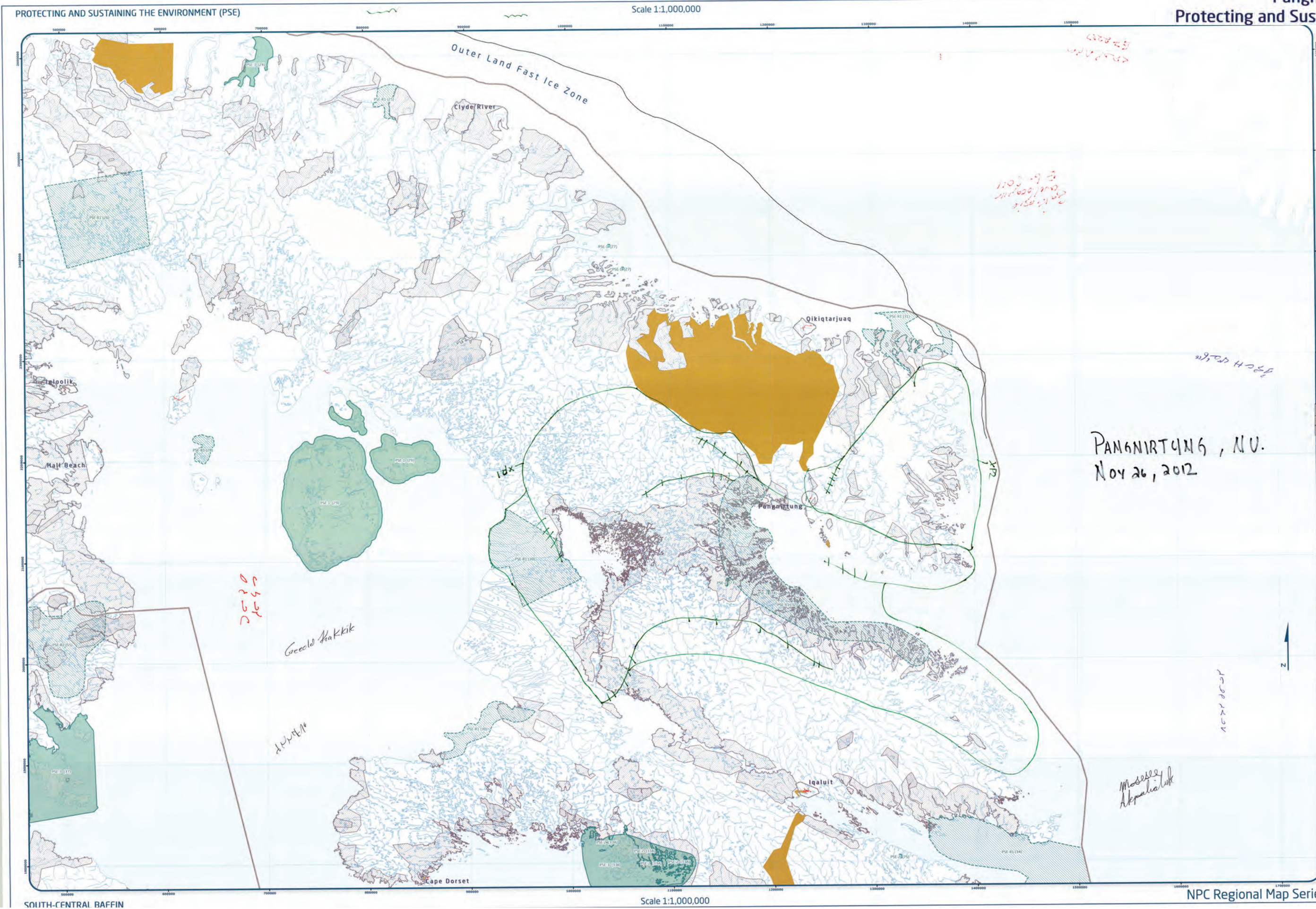
Designations	Permitted Uses	Prohibited Uses
Category 1	Tourism, Recreation, Research	All Other Uses
Category 2	Tourism, Recreation, Research	
Category 3	Tourism, Recreation, Research, Marine Infrastructure, Marine Geoscientific and Technical Cables	

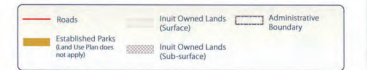
Reference Table for Recommendations	
PS-1 (H)	Project Proposals located in a Key Bird Habitat area should take into account impacts on the migratory birds that rely on the area.
PS-1 (C)	Project Proposals located in forested/canopy carving growths should take into account impacts on sensitive species, plant, animal and migratory routes.
PS-1 (H)	Project Proposals located in and/or near known/canopy ice cave crossing areas should take into account impact that may impede the ability of canyons to cross the ice.
PS-6A	Project Proposals located in portions of the Great Bear Lake watershed in northern should take into account impacts that may reduce the conservation value of the watershed.

Code	Comments
XP01	Area of Caribou
XP02	Area of Caribou

[illegible]

		Revised Mapping Commission Community Consultation Form Land Use Mapping Section
Community:	_____	
Location:	_____	
Region:	_____	
Date:	_____	
Community PIN#	_____	
Map #	_____	
Signatures of the Community signify its permission to conduct mapping session as follows.		
1.	_____	16
2.	_____	17
3.	_____	18
4.	_____	19
5.	_____	20
6.	_____	21
7.	_____	22
8.	_____	23
9.	_____	24
10.	_____	25
11.	_____	26
12.	_____	27
13.	_____	28
14.	_____	29
15.	_____	30
Signature of Mayor: _____		

[illegible]



Designations	Permitted Uses	Prohibited Uses
ECP-1	Tourism, Recreation, Research	All Other Uses
ECP-2	Tourism, Recreation, Research	

Reference Table for Recommendations

LCP-R1	Project Proposals located in and/or near a Heritage River should take into account the guidelines and criteria contained in the Heritage River's management plan.
--------	---

Code	Comments
	[No comments]

This is a blank sheet of white paper with horizontal blue ruling lines. The lines are evenly spaced and run across the width of the page. There is a vertical margin line on the left side, creating a narrow left margin. The top edge of the paper shows some faint, illegible markings, possibly from a previous page or binding. The overall appearance is that of a standard notebook page.

Nunavut Planning Commission
Community Consultation Tour
Land Use Mapping Session

Community: _____
 Location: _____
 Region: _____
 Date: _____
 Community PIN# _____
 Map # _____

Signatures of the Community signify as permission form to conduct mapping session as informants.

1.	_____	16.	_____
2.	_____	17.	_____
3.	_____	18.	_____
4.	_____	19.	_____
5.	_____	20.	_____
6.	_____	21.	_____
7.	_____	22.	_____
8.	_____	23.	_____
9.	_____	24.	_____
10.	_____	25.	_____
11.	_____	26.	_____
12.	_____	27.	_____
13.	_____	28.	_____
14.	_____	29.	_____
15.	_____	30.	_____

Signature of Mapper:

CONFIDENTIALITY STAMP

Map 2015

Projection: Lambert Conformal Conic
Datum: North American 1983
False Easting: 0.0000
False Northing: 0.0000

 Nunavut Planning Commission
 Commission d'Aménagement du Nunavut

Central Meridian: -95.0000
 Standard Parallel 1: 49.0000
 Standard Parallel 2: 77.0000

Latitude Of Origin: 49.0000
Units: Meter

Working Draft Sub-regional map data sources:
For Land Use Designations and Recommendations sources see draft Nunavut Land Use Plan and background

Hillshade created by utilizing Swiss method in Hillshade toolbox courtesy of ESRI user forums. Water bodies created by merging all 1:250,000 WTB shapefiles in Nunamap, version 2.0, and selecting all waterbodies over

50 hectares in size. Land outside of Nunavut, courtesy of Geogratis. Administrative boundaries consist of NPC draft regional boundaries, created to reflect Regional Inuit Association jurisdictions, combined with municipal boundaries, provided by Natural Resources Canada cadastral data. Inuit Owned Lands courtesy of Nunavut Tunngavik Incorporated. Territorial parks from the Government of Nunavut. National Parks from Parks Canada.

Data for areas within municipal boundaries obtained from Natural Resources Canada cadastral data
This map is to be used for reference purposes only by the NPC.
Any further use of this map or data therein must be authorized by contacting the Nunavut Planning
Commission at 867-920-4600 or npc@nunavut.ca

Commission at (867) 563-4625 or email mtownsend@nrc.gc.ca
Tuesday, November 13, 2012

Pangnirtung - Group 3 Results
Encouraging Conservation Planning

ENCOURAGING CONSERVATION PLANNING (ECP)

Scale 1:1,000,000



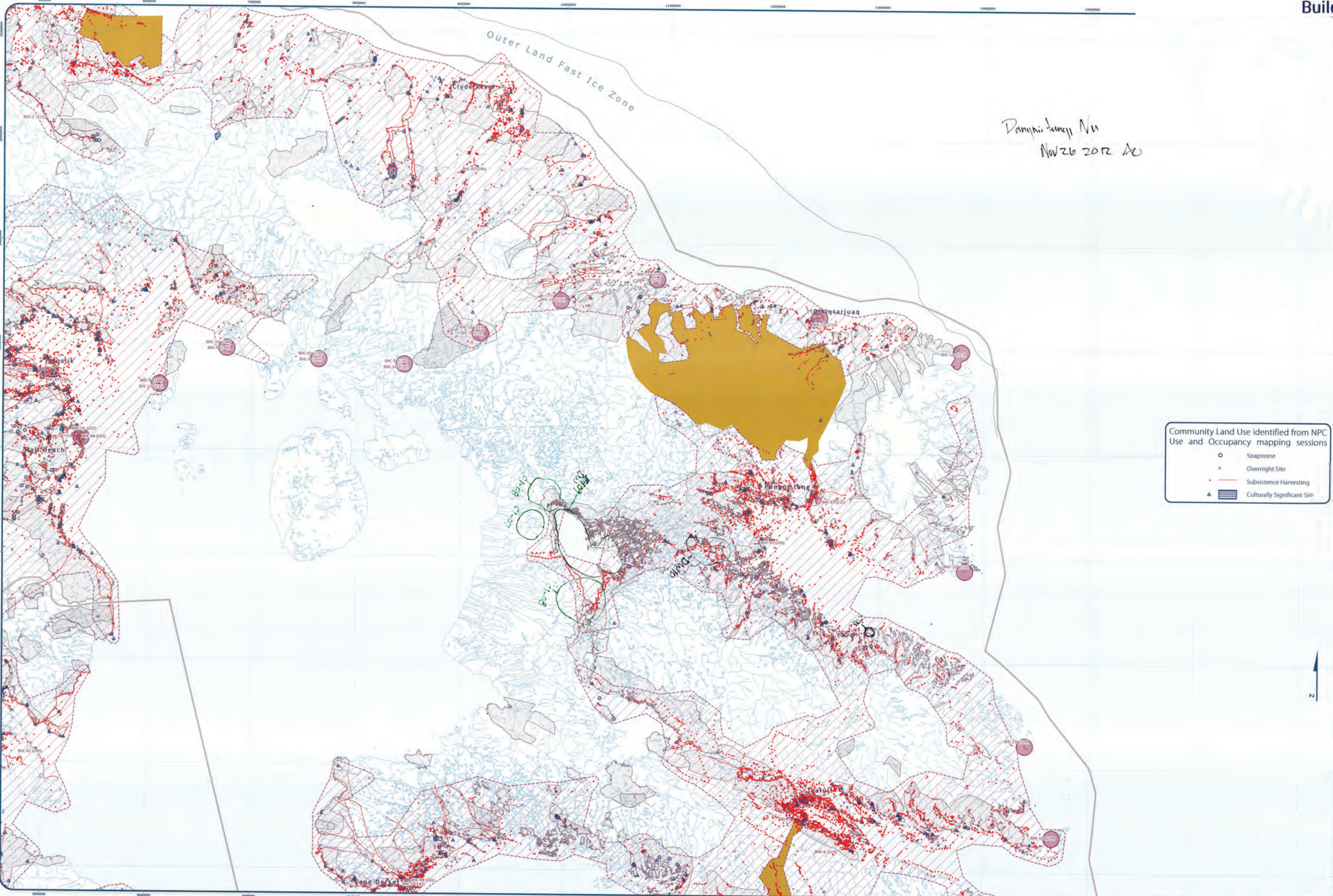
Designations	Permitted Uses	Prohibited Uses
XC01	Tourism, Recreation, Research	All other uses
XC02	Tourism, Recreation, Research	
XC03	ECF Recommendation	
XC04	Project Provisions located in and/or near a Heritage River should take into account the guidelines and criteria contained in the Heritage River's management plan	

Code	Comments
XC03	River with heritage value
XC04	"Macayan" River (sp?) river with historic significance protect from damming
XC05	River with heritage value
XC06	River with heritage value
XC07	River with heritage value
XC08	Area with fish, caribou and historic camps
XC09	Traditional sod houses
XC10	Blacklet island (sp?) - traditional fishing camp
XC11	Historic camp
XC12	Traditional camps
XC13	"Drum" Island (sp?) historical camps
XC14	Traditional camps on all these islands
XC15	"Vancouver" island (sp?) is a historic site, no to prospect in this area
XC16	Historic camp site
XC17	Historical camp site and burial site
XC18	Shore line, is a historic site, burial site and historic camp
XC19	Island is a historic site
XC20	Historical camp site
XC21	Sod houses, historic camp site
XC22	Historic Fall camp
XC23	Historic islands, burial sites
XC24	Historic camp and burial site
XC25	Evidence of a camp along shore line

Signature of the Government of Nunavut	Signature of the Minister of Environment and Natural Resources

Coordinate Systems: EPSG:4326 UTM
Projection: Lambert Conformal Conic
Datum: North American 1983
False Easting: 0.0000
Central Meridian: -65.0000
Standard Parallel 1: 49.0000
Standard Parallel 2: 77.0000
Latitude Of Origin: 49.0000
Units: Meter

Working Draft Sub-regional map data sources:
For Land Use Designations and Recommendations sources see draft Nunavut Land Use Plan and background information data source documents.
Historical data created by utilizing Swiss method in HistoLab toolbox courtesy of CSRI user forums. Water bodies created by merging all 1:250,000 scale maps in Nunavut, version 1.0, and selecting all water bodies over 50 hectares in size. Land outside of Nunavut, courtesy of Geogistics. Administrative boundaries consist of NPC draft regional boundaries, created to reflect Regional Inuit Association jurisdictions, combined with municipal boundaries, provided by Natural Resources Canada. Inuit Owned Lands courtesy of Nunavut Tunngavik Incorporated. Territorial parts from the Government of Nunavut, National Parks from Parks Canada. Data for areas within municipal boundaries obtained from Natural Resources Canada. This map is to be used for reference purposes only by the NPC.
Any further use of this map or data therein must be authorized by contacting the Nunavut Planning Commission at: (867) 993-4525 or email: nuplanning@nunavut.ca
Tuesday, November 13, 2012



Community Land Use identified from NPC
Use and Occupancy mapping sessions

- Soapstone
- × Overnight Site
- Subsistence Harvesting
- ▲ Culturally Significant Site



Designations	Permitted Uses	Prohibited Uses
BHC-1	Roads, Railways, Utilities and Corridors	
BHC-2	Roads, Railways, Utilities and Corridors	
BHC-3	All uses except those prohibited	Mining
BHC-4	Hydro electrical and related infrastructure	
BHC-5	Natural Resources and Recreation, Municipal Services	
BHC-6	Municipal Services	All Other Uses
BHC-7	Municipal Services	
BHC-8	Remediation and Restoration Activities	All Other Uses
BHC-9	Remediation and Restoration Activities, DRD Operations and Activities	All Other Uses
BHC-10	DRD Operations and Activities	All Other Uses

BHC Recommendation	
Reference Table for Recommendations	
BHC-11	Project Proposals located in the Inukjuat River Area of Interest should take into account impacts on the cultural value of the area.
BHC-12	Project Proposals located in areas of traditional land use should take into account impacts on the cultural value of the area.
BHC-13	Project Proposals located in a community water supply watershed should take into account impacts on the quality and quantity of community drinking water.
BHC-14	Project Proposals located in a municipal Reservoir should take into account impacts on sediment safety.

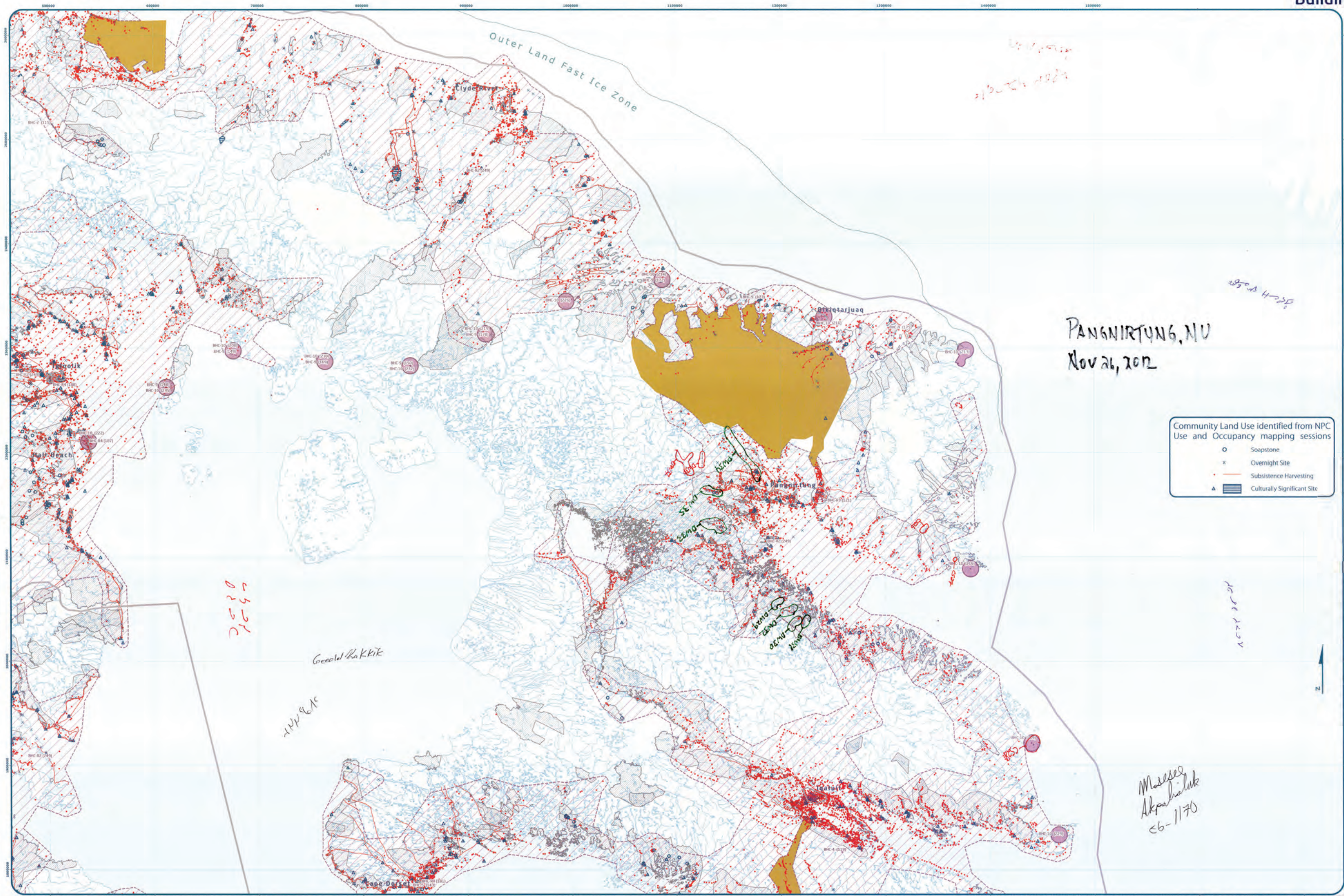
Code	Comments
C107	Historical Caribou hunting area.
C108	Historical Caribou hunting area. (Includes extended area)
DW09	Good drinking water.
DW10	Contaminated drinking water.
CS11	Contaminated area old barrels. (Kinnangua area).

Nunavut Planning Commission Community Consultation Tour Land Use Mapping Session	
Community	
Location	
Region	
Community ID	
Map #	
Signature of the Community representative (as per request to be included in the map data source)	
1	24
2	17
3	14
4	16
5	21
6	23
7	22
8	24
9	25
10	26
11	27
12	28
13	29
14	30
Signature of NPC Member	
COMMUNITY ID OF MAP	



Map 3065
Nunavut Planning Commission
Community Development Division

Working Draft Sub-regional map data sources:
For Land Use Designations and Recommendations sources see draft Nunavut Land Use Plan and background material data source documents.
Use and Occupancy data from NPC Use and Occupancy mapping sessions, 2004 to 2013.
Historical created by utilizing Swiss method in Inukjuat river country of CSB user forum data source documents created by merging all 1,250,000 WTS shapefiles in Nunavut - version 2.0, and selecting all waterbodies over 50 hectares in size. Land outside of Nunavut, courtesy of Geographic Administrative boundaries of NPC draft regional boundaries, created to reflect Regional Inuit Association jurisdictions, combined with municipal boundaries provided by Natural Resources Canada (external data). Inuit Owned Lands from Parks Canada. Tugayuk Incorporated. Territorial parks from the Government of Nunavut. National Parks from Parks Canada. Data for areas within municipal boundaries obtained from Natural Resources Canada (external data). This map is to be used for reference purposes only by the NPC.
Any further use of this map or data therein must be authorized by contacting the Nunavut Planning Commission at 867-769-4425 or email nunavut@nplanning.ca
Tuesday, November 13, 2012



Community Land Use identified from NPC Use and Occupancy mapping sessions

- Soapstone
- x Overnight Site
- Subsistence Harvesting
- ▲ Culturally Significant Site



Legend for Inuit Owned Lands

- Roads
- Inuit Owned Lands (Surface)
- Inuit Owned Lands (Sub-surface)
- Administrative Boundary

Designations	Permitted Uses	Prohibited Uses
BHC-1	Roads, Railways, Utilities and Corridors	
BHC-2	Roads, Railways, Utilities and Corridors	
BHC-3	All uses except those Prohibited	Mining
BHC-4	Hydro electrical and related infrastructure	
BHC-5	Tourism, Recreation and Research, Municipal Services	
BHC-6	Municipal Services	All Other uses
BHC-7	Municipal Services	
BHC-8	Recreation and Recreation Activities	All Other uses
BHC-9	Recreation and Recreation Activities, O&G Operations and Activities	All Other uses
BHC-10	O&G Operations and Activities	All Other uses

Code	Comments
CS26	Old fuel drums
CS27	Contaminated site
CS28	Priority clean up contaminated site. Contaminated sites may affect drinking water and lead to health concerns. In particular, prospecting creates contamination that can affect drinking water.
DW29	Lake for drinking water, should be identified and protected
DW30	Lake for drinking water, should be identified and protected
DW31	Lake for drinking water, should be identified and protected
DW32	Lake for drinking water, should be identified and protected
DW33	Lake for drinking water, should be identified and protected
DW34	Lake for drinking water, should be identified and protected
DW35	Lake for drinking water, should be identified and protected
DW36	Lake for drinking water, should be identified and protected
DW37	Lake for drinking water, should be identified and protected

Reference Table for Recommendations

BHC-1	Project Proposals located in the Tuktoyaktuk River Area of Interest should take into account impacts on the cultural value of the area.
BHC-2	Project Proposals located in areas of traditional land use should take into account impacts on the cultural value of the area.
BHC-3	Project Proposals located in a community water supply watershed should take into account impacts on the quality and quantity of community drinking water.
BHC-4	Project Proposals located in a municipal Aerodrome should take into account impacts on aerodrome safety.

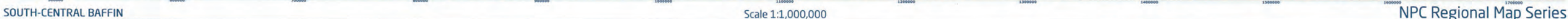
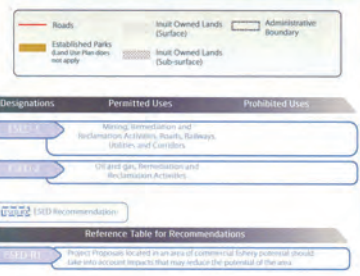
Signature of Mayor

CONFIDENTIALITY OF MAP

Coordinate System: EPSG 42304 LCC
Projection: Lambert Conformal Conic
Datum: North American 1983
False Easting: 0.0000
False Northing: 0.0000
Central Meridian: -95.0000
Standard Parallel 1: 49.0000
Standard Parallel 2: 77.0000
Latitude Of Origin: 49.0000
Units: Meter

Use and Occupancy data from NPC Use and Occupancy mapping sessions, 2004 to 2011.
Map created by utilizing Swiss method in mid-latitude toolbox courtesy of ESRI user forums. Water bodies created by using a 1:250,000 scale map of Pangnirtung, version 2.0, and selecting all water bodies over 50 hectares in size. Land outside of Pangnirtung, courtesy of Geomatics. Administrative boundaries consist of NPC draft regional boundaries, created to reflect Regional Inuit Association jurisdiction, combined with municipal boundaries, provided by Natural Resources Canada cadastral data. Inuit Owned Lands courtesy of Nunavut Tunngavik Incorporated. Territorial parks from the Government of Nunavut, National Parks from Parks Canada. Data for areas within municipal boundaries obtained from Natural Resources Canada cadastral data. This map is to be used for reference purposes only by the NPC. Any further use of this map or data therein must be authorized by contacting the Nunavut Planning Commission at (867) 993-4625 or email: info@nuplanning.com on Tuesday, November 13, 2012.

Scale 1:1,000,000


$$\frac{z}{z}$$


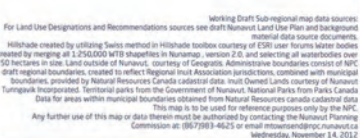
**Natural Planning Commission
Community Consultation Year-
Land Use Mapping Session**

Community _____
Location _____
Region _____
Date _____
Community PMA _____
Map # _____

Signature of the Community entity as per consent form to conduct mapping session is required.

J	15.
J	17.
L	18.
A	19.
S	20.
G	21.
I	22.
E	23.
H	24.
O	25.
T	26.
F	27.
D	28.
M	29.
C	30.

(Signature of Mapper)



Pangnirtung – Group 2 Results



Scale 1:1,000,000



Code	Comments
XD12	Extend fish area.
XD13	Extend fish area.
XD14	Capelin fish (new fish to the area).

MAP 4 of 5


looking (draft sub-regional map data sources).
For Land Use Designations and Recommendations sources see draft Nunavut Land Use and background information documents.
Habitat created by utilizing Swiss Mire in Hibernia benthos, version 2.0, and source documents.
50 hectares in the Land north of the Hibernia benthos, version 2.0, and source documents.
draft regional boundaries, created to reflect Regional unit Association jurisdictions, combined with municipal boundaries, provided by Natural Resources Canada (catalyst data).
Territorial Incorporated, Territorial parts from the Government of Nunavut, National Parks from Parks Canada.
Data for areas within municipal boundaries obtained from Natural Resources Canada (catalyst data).
This map is to be used for reference purposes only by the NRC.
Commissioner at (867)799-4625 or email info@nrcan.gc.ca.
Wednesday, November 14, 2012



Scale 1:1,000,000

A map of Nunavut, Canada, showing its geographical features and administrative boundaries. The map includes a scale bar (0 to 750 Kilometers) and a north arrow. A red rectangle highlights the study area, which is located in the eastern part of Nunavut, near the border with the Northwest Territories. The map also shows major cities and towns, including Inuvik, Repulse, Cambridge Bay, and Etah.



Designations	Permitted Uses	Prohibited Uses
Category 1	Missing, Remediation and Reconstruction Activities, Harbors, Railways, Utilities and Canals	
Category 2	Oil and gas, Remediation and Reconstruction Activities	
 EPA's CERCLA Recommendations		
Reference Table for Recommendations		
Category 3	<p>Proper Protection: Located in an area of commercial/industry corridor should take into account impacts that may reduce the potential of the area.</p>	

Code	Comments
XD38	Turbot fishing area

This image shows a single sheet of white paper with horizontal blue ruling lines. The lines are evenly spaced and run across the width of the page. On the left side, there is a vertical margin line. At the top left corner, the word "Zusatzblatt" is printed vertically. At the bottom left corner, the number "13069808" is printed vertically. The rest of the page is blank except for the ruling lines.

Neural Planning Commission Community Consultation Task Land Use Mapping Session	
Community:	
Location:	
Region:	
Town:	
Community Name:	
Map #:	
Signatures of the Community agency as a permission to use the location mapping information as follows:	
1.	1%
2.	1%
3.	1%
4.	1%
5.	1%
6.	1%
7.	1%
8.	1%
9.	1%
10.	1%
11.	1%
12.	1%
13.	1%
14.	1%
15.	1%

Signature of Mission _____

CONFIDENTIALITY STAMP

40 20 0 40 80
Kilometres

Coordinate System: EPSG 42304 LCC
Projection: Lambert Conformal Conic
Datum: North American 1983
False Easting: 0.0000
False Northing: 0.0000
Central Meridian: -95.0000
Standard Parallel 1: 49.0000
Standard Parallel 2: 77.0000
Latitude Of Origin: 49.0000
Units: Meter

This map is to be used for reference purposes only by the NPC.
Any further use of this map or data therein must be authorized by the National Planning Commission at (867)986-4625 or email npc@nrc.ca
Wednesday, November 14, 2012

[illegible]

Code	Comments
MU28	Caribou calving . Needs additional protection from mineral exploration.
MU29	This area used to be full of caribou and caribou are expected to return to this area anytime. Protection needed.
MU30	caribou calving grounds.
MU31	opportunity for tourism
MU32	Clearwater Fiord must be protected.

[illegible]

Norwood Planning Commission Community Consultation Team Land Use Mapping Session	
Community _____	
Location _____	
Region _____	
State _____	
Community Plan# _____	
Map # _____	
Signatures of the Community Agency at presentation: Name (to conduct mapping session at information):	
1. _____	16. _____
2. _____	17. _____
3. _____	18. _____
4. _____	19. _____
5. _____	20. _____
6. _____	21. _____
7. _____	22. _____
8. _____	23. _____
9. _____	24. _____
10. _____	25. _____
11. _____	26. _____
12. _____	27. _____
13. _____	28. _____
14. _____	29. _____
15. _____	30. _____

Signature of Mapper: _____

[illegible]

Dang ni hung, Ned
Nov 26, 2012 TU

Appendix 5: Wrap Up Session

A small group of participants returned to identify additional important areas during the wrap up session. All additional areas were recorded on a single map.



Designations		Permitted Uses	Prohibited Uses
		All uses	
Code	Comments		
MU01	Protection from development, drinking water/fresh water is a concern. Caribou migration area, hunters would travel this route – "attinuk" (lord).		
MU02	Caribou area. Last couple of years there has been a lot of prospecting and exploration that scares caribou away. Low level flights scare of the caribou. Plan should look at exploration and its impacts on traditional activities.		
MU03	Caribou, walrus, seal hunting ground. Bearded seal present. Exploration companies need to observe conditions, rules of low level flights.		
MU04	Walrus hunting area and fishing area.		
MU05	Fishing Area/Harvesting claims		
MU06	Fishing grounds. Exploration in these areas.		
MU07	Potential commercial fishing, cod and clams. These areas should be protected for this purpose.		
MU08	Potential commercial fishing, cod and clams. These areas should be protected for this purpose. DFO transponders scaring off seals.		
MU09 to MU21	Potential commercial fishing, cod and clams. These areas should be protected for this purpose.		
MU22	Caribou area, protect from prospecting. Staking leads to caribou smelling humans and not returning to these areas.		
MU23	Historic camping area, travel routes and caribou harvesting. DIOs are often disregarding Inuit. They need to be involved in discussions at early stage.		
MU24	Beluqa whale grounds.		

Annke
Map 1 of 1
Nov 27, 2012
Pangnirtang

~~CONFIDENTIAL~~
C03D3246475b
Nunavut Planning Commission
0031 0000

Mol
Alpachalul

1	17
2	18
3	19
4	20
5	21
6	22
7	23
8	24
9	25
10	26
11	27
12	28
13	29
14	30
15	

Signature of Muggler _____

CONFIDENTIALITY BY GMP

A horizontal number line with arrows at both ends. It is marked with the numbers -40, -20, 0, 20, 40, and 60. The tick marks are evenly spaced, representing increments of 20.


 المخطط الوطني
 National Planning Commission
 Commission d'Aménagement du Territoire

For Land Use Designations and Recommendations sources see draft Nunavut Land Use Plan and associated material data base.

Hillsdale created by utilizing Swiss method in Hillsdale border counties of ESRU user forum created by merging all 1,256,600 478 parcels in Nunavut. The map is a vector file with a total of 50 hectares in size. Land outside of Nunavut, country of Georgia, Administrative boundaries of eight regional boundaries, created to reflect Regional Input Association jurisdictions, combined with boundaries provided by Natural Resources Canada map to be used for reference purposes only. Nunavut Government. Territorial parcels from the Government of Nunavut, Nunavut Parks Canada Data for areas within municipal boundaries obtained from Natural Resources Canada.

Any further use of this map or data therein must be authorized by contacting the Nunavut Commission at (867)793-4625 or email nunavutcommission@nunavut.ca

Appendix 6: Follow-up Meeting

The NPC returned to the community to review a draft version of this report with the Hamlet Council, Hunters and Trappers Organization, and Community Lands and Resource Committee. The meeting included:

- A presentation of a draft version of this report
- An overview of the mapped information that was recorded for each topic:
 - Protecting and Sustaining the Environment
 - Encouraging Conservation Planning
 - Building Healthier Communities
 - Encouraging Sustainable Economic Development
 - Mixed Use
- Potential changes to the classification of a few mapped areas were discussed and agreed to.
- General discussion and comments including:
 - There will be lots of development in the near future. There is a need for development around the world and economic development is needed in the north.
 - We need to find other locations for our water supply. If there is a drought we will need another source.
 - This is the type of thing we should have been doing since the beginning, with the CLARC, Hamlet, and HTO working together.
 - We as a community need to be able to work together with other people so that we can ensure that there is development for the benefit of our children.