

Summary of Community Meetings on the  
Draft Nunavut Land Use Plan  
CHESTERFIELD INLET  
November 21-22, 2013



Revised - January 2014



# Contents

Introduction.....	3	Appendix 1: Open House.....	17
1.1 Context .....	3	Appendix 2: Elected Officials Meeting.....	18
1.2 Purpose.....	3	Appendix 3: Questions and Answers.....	19
1.3 Methodology.....	3	Appendix 4: Community Workshop Scanned Maps.....	20
1.4 Public Awareness .....	3	Appendix 5: Follow-up Meeting.....	30
1.5 Community Population and Participation.....	3		
 Protecting and Sustaining the Environment .....	4		
2.1 Areas presented to participants.....	4		
2.2 Areas identified by participants .....	4		
2.3 Areas of importance to Protecting and Sustaining the Environment..	4		
 Encouraging Conservation Planning.....	6		
3.1 Areas presented to participants .....	6		
3.2 Areas identified by participants .....	6		
3.3 Areas of importance to Encouraging Conservation Planning .....	6		
 Building Healthier Communities .....	8		
4.1 Areas presented to participants.....	8		
4.2 Areas identified by participants .....	8		
4.3 Areas of importance to Building Healthier Communities .....	8		
 Encouraging Sustainable Economic Development.....	10		
5.1 Areas presented to participants.....	10		
5.2 Areas identified by participants .....	10		
5.3 Areas of importance to Encouraging Sustainable Economic Development .....	10		
 Mixed Use .....	12		
6.1 Areas identified in the Draft Plan .....	12		
6.2 Areas identified by participants .....	12		
 Overlapping Goals .....	15		
7.1 Areas identified for multiple goals .....	15		

# Chapter 1: Introduction

## 1.1 Context

The Nunavut Planning Commission (NPC) is preparing a land use plan to guide and direct resource use and development in the Nunavut Settlement Area (NSA). As part of its efforts, the NPC is facilitating discussions in each Nunavut community on land use and resource management issues. Information that is obtained from these discussions will be used to inform decisions regarding the further development of the Nunavut Land Use Plan (NLUP).

## 1.2 Purpose

This report presents information obtained during the NPC's visit to the community of Chesterfield Inlet. The purpose of the report is to inform decisions regarding the further development of the NLUP, ensuring that the plan reflects the priorities and values of residents.

It is important to note that the information contained in the Community Report will be considered in conjunction with all other feedback when revising the DNLUP.

## 1.3 Methodology

Information was presented to and received from participants in Chesterfield Inlet in accordance with the Nunavut Planning Commission's Community Engagement Strategy (Engagement Strategy). The Engagement Strategy provides for the following methods for presenting and receiving information;

- **Open house;** information contained in the Draft Nunavut Land Use Plan (DNLUP) was presented on 7 multi lingual large format poster boards. Participants were encouraged to review the posters, ask questions and provide feedback. Comments and questions were recorded by NPC staff and are contained in Appendix 1.
- **Elected Officials Meeting;** The NPC Chairperson and NPC staff met with senior and elected officials in the community. The development process for the DNLUP, its content and next steps were presented.

Comments and questions were recorded during the session and are contained in Appendix 2.

- **Public Workshop;** A formal presentation of the Draft Plan content was provided to participants, including a slide overview of its content. Following the presentation, questions and comments were received from participants. The questions, comments and responses are contained in Appendix 3.

A mapping session followed the presentation of the Draft Plan. The mapping session involved discussions regarding the topics presented in the DNLUP and encouraged participants to identify additional areas and issues important for inclusion in a NLUP. Information received during this session was recorded by NPC staff and is included in Appendix 4.

- **Wrap Up Session;** Staff was available to discuss the areas identified during the mapping and identify any additional issues or areas of interest.

Areas that participants identified during mapping sessions as important to a particular goal have, in the majority of cases, been included in this report as they were recorded. In instances where participants identified an area that was better suited to another goal, the area has been reclassified to the more suitable goal and has been verified as appropriate to do so by the Community.

A follow-up meeting was held on January 15, 2014 to review a draft version of this report with the Hamlet Council, Hunters and Trappers Organization, and Community Lands and Resource Committee. A summary of this meeting is included in Appendix 5.

## 1.4 Public Awareness

The NPC raised public awareness regarding its visit to Chesterfield Inlet in accordance with the Engagement Strategy.

The DNLUP and supporting materials were mailed to the Mayor and Council of Chesterfield Inlet, and the Hunters and Trappers Organization (HTO) in September 2012. In addition, letters of invitation were sent to the Chesterfield Inlet Mayor

and Council and HTO in advance of the NPC's visit to advise of the meetings and to encourage participation. Follow up phone calls were also made.

Public notice of the various events was provided in the following ways:

- **Nunatsiaq News and Nunavut News/North;** notice of community meetings were posted in both newspapers a minimum of 45 days in advance.
- **Co-op cable TV;** notice of community meetings was run a minimum of 45 days in advance for one week and run again for no less than 14 days before the meetings.
- **Community radio;** notices were read by the hosts and a live interview with the Commission Chairperson was conducted.
- **Community bulletin boards;** notices were posted on bulletin boards around the community 45 days and again 14 days in advance of the meetings.
- **Community mail drop;** one page flyers that announced the meetings and their purpose were delivered to the post office in each community for all mail boxes that accept unaddressed ad-mail.
- **nunavut.ca;** the schedule of community visits, the Draft Plan, and all supporting information was available on the Commission's website.

## 1.5 Community Population and Participation

Chesterfield Inlet is a community of approximately 315 people (Statistics Canada. 2011 Census). It is located on the northwestern shore of Hudson Bay (see Figure 1).

The Commission visited the community on November 21-22, 2013. All events occurred as scheduled. The sessions were attended as follows;

- **Elected Officials Meeting;** the Mayor and members of the Hamlet Council and HTO attended the elected officials meeting.
- **Open house;** approximately 15 people attended the open house to review the Draft Plan.
- **Public Workshop;** approximately 25 people attended the presentation of the DNLUP and facilitated mapping sessions. Information was recorded in two separate mapping groups.
- **Wrap Up Session;** 0 people attended the wrap up session.

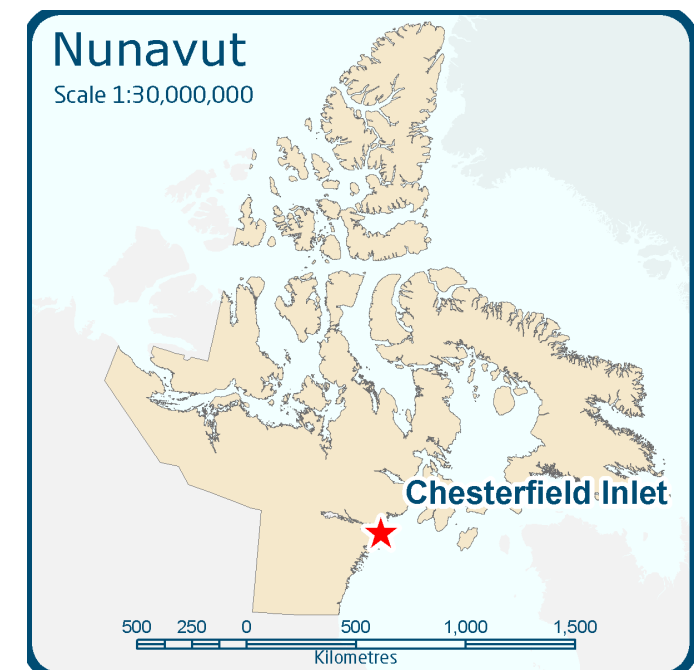


Figure 1. Location of Chesterfield Inlet

# Chapter 2: Protecting and Sustaining the Environment

Protecting and Sustaining the Environment was one of five topics presented to and discussed by participants during the Open House, Elected Officials Meeting, Public Workshop and Wrap up Session, collectively referred to in this document as information sharing and gathering sessions.

## 2.1 Areas presented to participants

During the information sharing and gathering sessions, participants were presented the following areas and issues as important to Protecting and Sustaining the Environment.

- Key bird habitat sites
- Caribou Habitat sites
- Atlantic Cod Lakes
- Cumulative Impacts
- Transboundary considerations
- Climate change

The importance of these issues and areas to Protecting and Sustaining the Environment was not disputed by participants during the information sharing and gathering sessions.

## 2.2 Areas identified by participants

Additional areas and issues were identified by participants as important to Protecting and Sustaining the Environment during the information sharing and gathering sessions. These additional areas are;

- Caribou habitat
- Marine mammal habitat
- Bird habitat
- Fish habitat

## 2.3 Areas of importance to Protecting and Sustaining the Environment

Areas and issues discussed during the information sharing and gathering sessions as important to Protecting and Sustaining the Environment are illustrated on Map 1, including areas identified in the DNLUP and areas identified by the community. Scanned images of the maps on which community feedback was recorded can be found in Appendix 4.

Based on discussions with participants, the NPC understands that:

- The areas identified on Map 1 are considered by the Community to be important to Protecting and Sustaining the Environment.
- In these areas, the community would like the NLUP to encourage activities that support environmental protection and management needs, including wildlife conservation, protection and management.

This feedback will be considered in conjunction with all other feedback when revising the DNLUP.

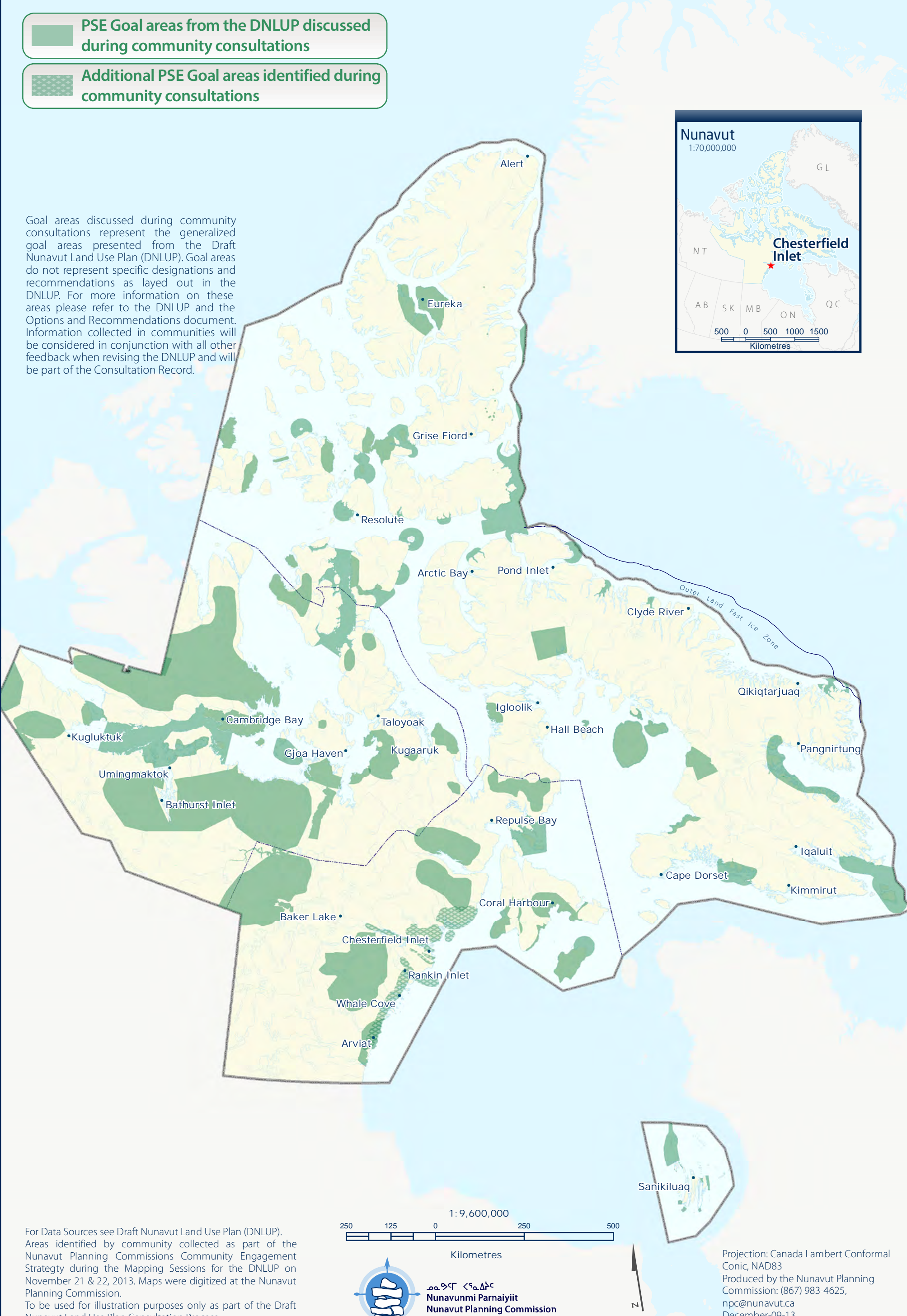




PROTECTING AND SUSTAINING THE ENVIRONMENT (PSE)  
CHESTERFIELD INLET • MAP 1

-  PSE Goal areas from the DNLUP discussed during community consultations
-  Additional PSE Goal areas identified during community consultations

Goal areas discussed during community consultations represent the generalized goal areas presented from the Draft Nunavut Land Use Plan (DNLUP). Goal areas do not represent specific designations and recommendations as layed out in the DNLUP. For more information on these areas please refer to the DNLUP and the Options and Recommendations document. Information collected in communities will be considered in conjunction with all other feedback when revising the DNLUP and will be part of the Consultation Record.




For Data Sources see Draft Nunavut Land Use Plan (DNLUP). Areas identified by community collected as part of the Nunavut Planning Commissions Community Engagement Strategy during the Mapping Sessions for the DNLUP on November 21 & 22, 2013. Maps were digitized at the Nunavut Planning Commission. To be used for illustration purposes only as part of the Draft Nunavut Land Use Plan Consultation Process.

2501250250500

1: 9,600,000

Kilometres



ᓄᓇᓂᓄᓄ ᐸᓇᓂᓄᓄᓄ

Nunavunmi Parnaiyiit

Nunavut Planning Commission

Commission d'Aménagement du Nunavut

Projection: Canada Lambert Conformal Conic, NAD83  
Produced by the Nunavut Planning Commission: (867) 983-4625, npc@nunavut.ca  
December-09-13



## Chapter 3: Encouraging Conservation Planning

Encouraging Conservation Planning was one of five topics presented to and discussed by the participants during the information sharing and gathering sessions.

### 3.1 Areas presented to participants

During the information sharing and gathering sessions, participants were presented the following areas and issues as important to Encouraging Conservation Planning;

- National Parks Awaiting Full Establishment
- Proposed National Parks
- National Marine Conservation Areas
- Thelon Wildlife Sanctuary
- Migratory Bird Sanctuaries
- National Wildlife Areas
- National Historic Sites
- Territorial Historic Sites
- Heritage Rivers

The importance of these issues and areas to Encouraging Conservation Planning was not disputed by participants during the information sharing and gathering sessions.

### 3.2 Areas identified by participants

Additional areas and issues were identified by participants as important to Encouraging Conservation Planning during the information sharing and gathering sessions. These additional areas are.

- Historic sites

### 3.3 Areas of importance to Encouraging Conservation Planning

Areas and issues discussed during the information sharing and gathering sessions as important to Encouraging Conservation Planning are illustrated on Map 2, including areas identified in the DNLUP and areas identified by the community. Scanned images of the maps on which community feedback was recorded can be found in Appendix 4.

Based on discussions with participants, the NPC understands that:

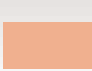

- The areas identified on Map 2 are considered by the Community to be important to Encouraging Conservation Planning.
- In these areas, the community would like the NLUP to encourage activities that support environmental protection and management needs, including wildlife conservation, protection and management.

This feedback will be considered in conjunction with all other feedback when revising the DNLUP.

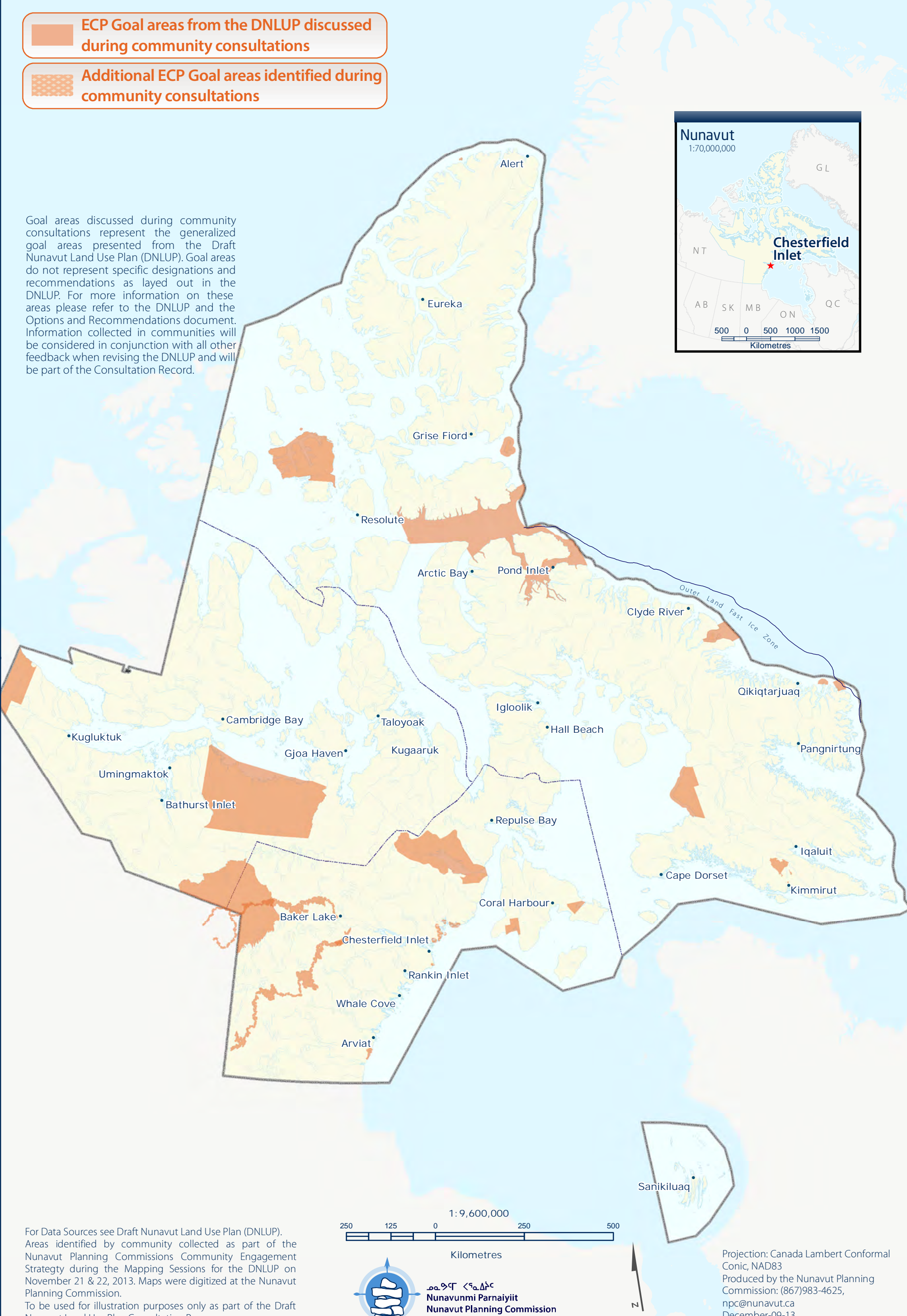




ENCOURAGING CONSERVATION PLANNING (ECP)  
CHESTERFIELD INLET • MAP 2

-  ECP Goal areas from the DNLUP discussed during community consultations
-  Additional ECP Goal areas identified during community consultations


Goal areas discussed during community consultations represent the generalized goal areas presented from the Draft Nunavut Land Use Plan (DNLUP). Goal areas do not represent specific designations and recommendations as layed out in the DNLUP. For more information on these areas please refer to the DNLUP and the Options and Recommendations document. Information collected in communities will be considered in conjunction with all other feedback when revising the DNLUP and will be part of the Consultation Record.



For Data Sources see Draft Nunavut Land Use Plan (DNLUP). Areas identified by community collected as part of the Nunavut Planning Commissions Community Engagement Strategy during the Mapping Sessions for the DNLUP on November 21 & 22, 2013. Maps were digitized at the Nunavut Planning Commission. To be used for illustration purposes only as part of the Draft Nunavut Land Use Plan Consultation Process.

2501250250500

Kilometres



ᓄᓇᓂᓄᓄᓄ ᐸᓄᓇᐱᓄᓄᓄ

Nunavunmi Parnaiyiit

Nunavut Planning Commission

Commission d'Aménagement du Nunavut

Projection: Canada Lambert Conformal Conic, NAD83  
Produced by the Nunavut Planning Commission: (867)983-4625, npc@nunavut.ca  
December-09-13



Building Healthier Communities was one of five topics presented to and discussed by the participants during the information sharing and gathering sessions.

### 4.1 Areas presented to participants

During the information sharing and gathering sessions, participants were presented the following areas and issues as important to Building Healthier Communities;

- Areas of Community Interest
- Community Land Use
- Transportation Infrastructure
- Unincorporated Communities
- Alternative Energy Sources
- Community drinking water supplies
- Land remediation
- Northern Contaminated Sites Program
- Aerodromes
- Canadian Forces Station
- Northern Warning System sites

The importance of these issues and areas to Building Healthier Communities was not disputed by participants.

### 4.2 Areas identified by participants

Additional areas and issues were identified by participants as important to contributing to the goal of Building Healthier Communities during the information sharing and gathering sessions. These additional areas are;

- Hunting areas

### 4.3 Areas of importance to Building Healthier Communities

Areas and issues discussed during the information sharing and gathering sessions as important to Building Healthier Communities are illustrated on Map 3, including areas identified in the DNLUP and areas identified by the community. Scanned images of the maps on which community feedback was recorded can be found in Appendix 4.

Based on discussions with participants, the NPC understands that:



- The areas identified on Map 3 are considered by the Community to be important to Building Healthier Communities.
- In these areas, the community would like the NLUP to encourage activities that support community needs and cultural priorities.

This feedback will be considered in conjunction with all other feedback when revising the DNLUP.

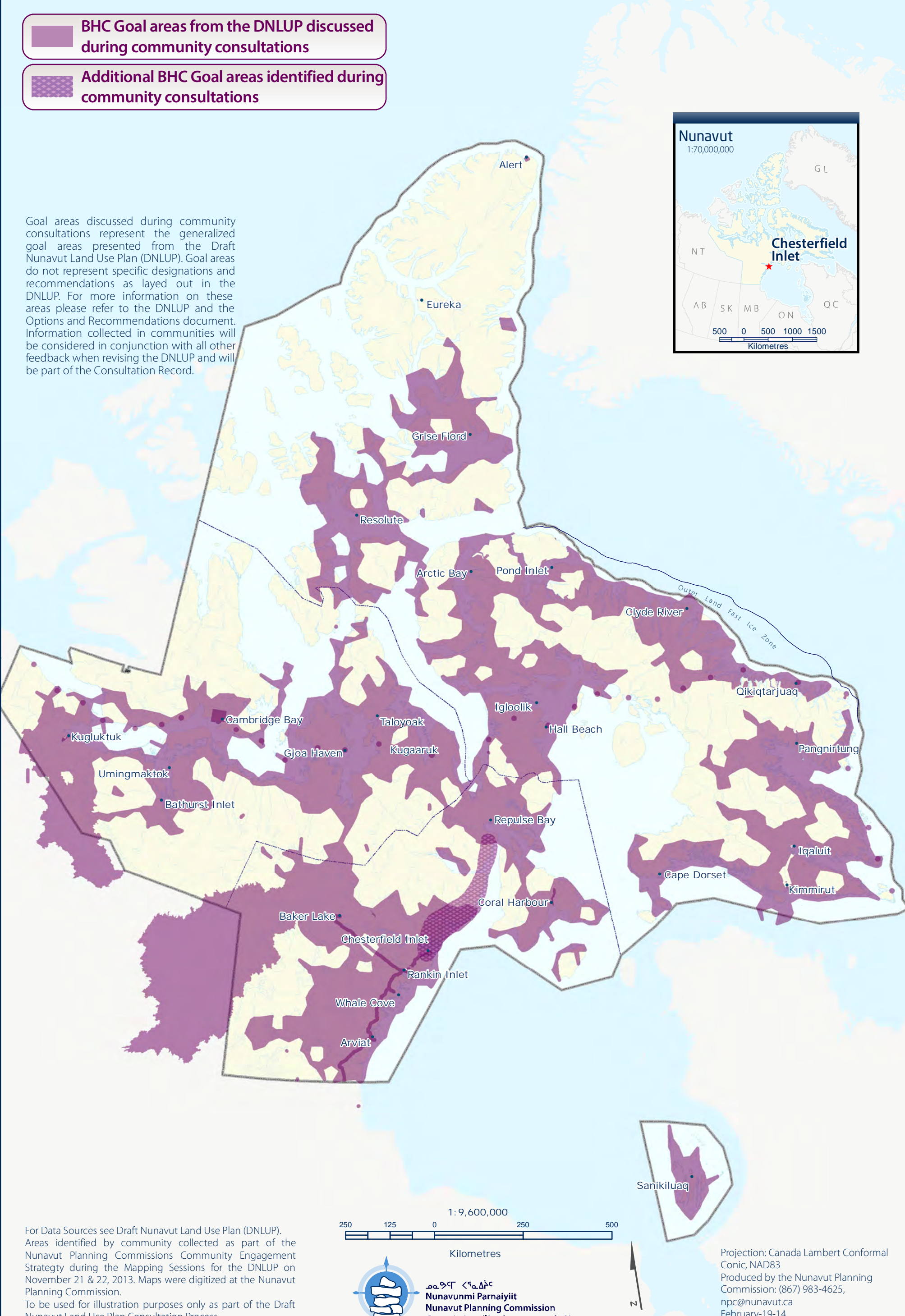




BUILDING HEALTHIER COMMUNITIES (BHC)  
CHESTERFIELD INLET • MAP 3

-  BHC Goal areas from the DNLUP discussed during community consultations
-  Additional BHC Goal areas identified during community consultations

Goal areas discussed during community consultations represent the generalized goal areas presented from the Draft Nunavut Land Use Plan (DNLUP). Goal areas do not represent specific designations and recommendations as layed out in the DNLUP. For more information on these areas please refer to the DNLUP and the Options and Recommendations document. Information collected in communities will be considered in conjunction with all other feedback when revising the DNLUP and will be part of the Consultation Record.



For Data Sources see Draft Nunavut Land Use Plan (DNLUP). Areas identified by community collected as part of the Nunavut Planning Commissions Community Engagement Strategy during the Mapping Sessions for the DNLUP on November 21 & 22, 2013. Maps were digitized at the Nunavut Planning Commission. To be used for illustration purposes only as part of the Draft Nunavut Land Use Plan Consultation Process.



ᓄᓇᓂᓄᓐ ᐸᓐᓇᓂᓄᓐ  
Nunavunmi Parnaiyiit  
Nunavut Planning Commission  
Commission d'Aménagement du Nunavut



# Chapter 5: Encouraging Sustainable Economic Development

Encouraging Sustainable Economic Development was one of five topics presented to and discussed by the participants during the information sharing and gathering sessions.

## 5.1 Areas presented to participants

During the information sharing and gathering sessions, participants were presented with the following areas important to Encouraging Sustainable Economic Development;

- Mineral Exploration and Production
- Oil and Gas Exploration
- Commercial Fisheries

The importance of these issues and areas to Encouraging Sustainable Economic Development was not disputed by participants during the information sharing and gathering sessions.

## 5.2 Areas identified by participants

Additional areas and issues were identified by participants as important to Encouraging Sustainable Economic Development during the information sharing and gathering sessions. The additional areas identified are;

- Commercial fishery
- Potential deep water port
- Sport hunting areas
- Soapstone sites

## 5.3 Areas of importance to Encouraging Sustainable Economic Development

Areas and issues discussed during the information sharing and gathering sessions as important to Encouraging Sustainable

Economic Development are illustrated on Map 4, including areas identified in the DNLUP and areas identified by the community. Scanned images of the maps on which community feedback was recorded can be found in Appendix 4.

Based on discussions with participants, the NPC understands that:

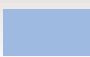

- The areas identified on Map 4 are considered by the Community to be important to Encouraging Sustainable Economic Development.
- In these areas, the community would like the NLUP to encourage activities that support economic opportunities and needs.

This feedback will be considered in conjunction with all other feedback when revising the DNLUP.

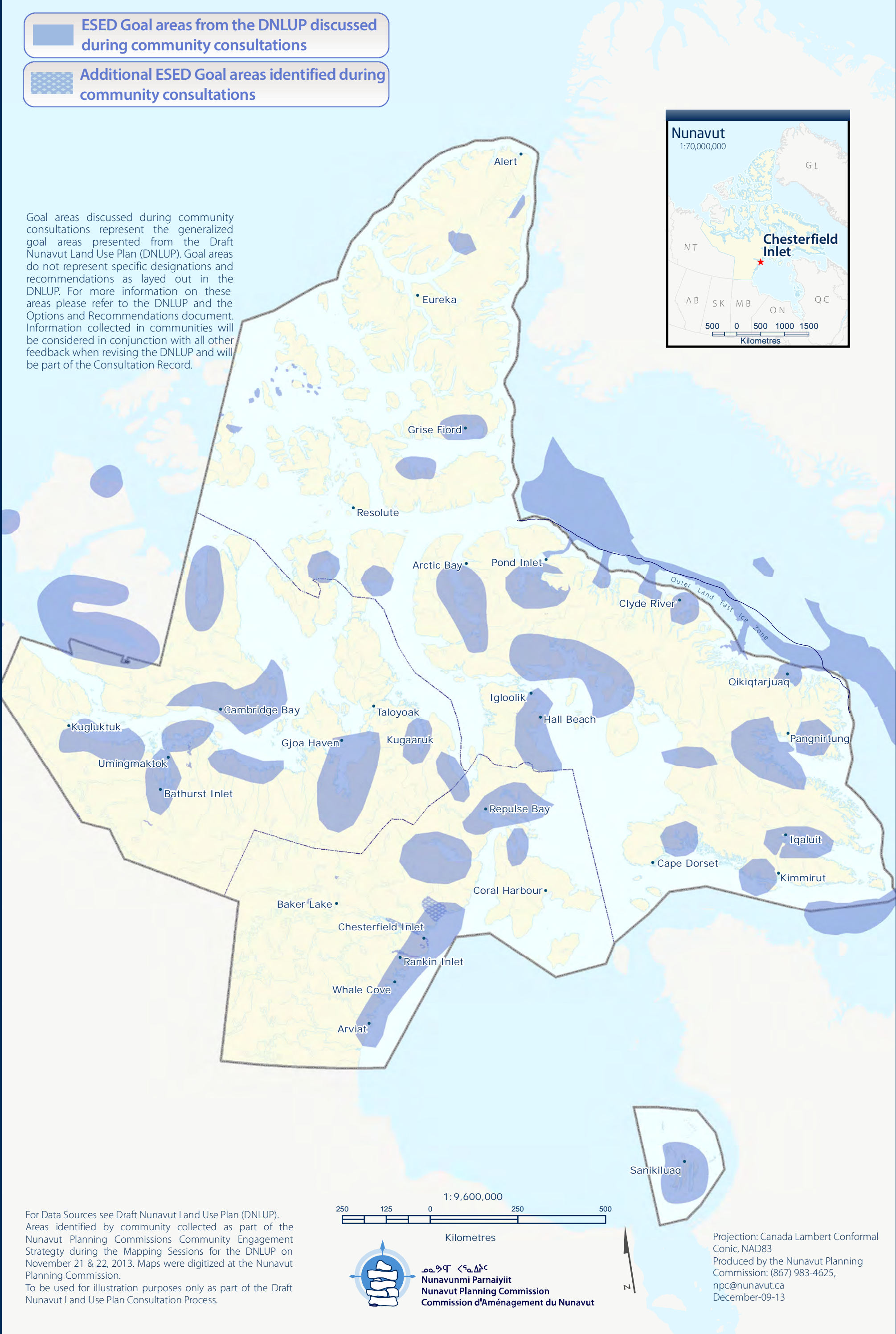




# ENCOURAGING SUSTAINABLE ECONOMIC DEVELOPMENT (ESED) CHESTERFIELD INLET • MAP 4

-  ESED Goal areas from the DNLUP discussed during community consultations
-  Additional ESED Goal areas identified during community consultations

Goal areas discussed during community consultations represent the generalized goal areas presented from the Draft Nunavut Land Use Plan (DNLUP). Goal areas do not represent specific designations and recommendations as layed out in the DNLUP. For more information on these areas please refer to the DNLUP and the Options and Recommendations document. Information collected in communities will be considered in conjunction with all other feedback when revising the DNLUP and will be part of the Consultation Record.





### 6.1 Areas identified in the Draft Plan

The DNLUP identifies areas important for a variety of uses. These areas were presented to participants during the workshop as Mixed Use Areas. These areas, as they occur around the community, are illustrated on Map 5.

### 6.2 Areas identified by participants

No additional areas were identified as Mixed Use by participants. However, some areas identified as Mixed Use in the DNLUP were considered by participants to require additional protection because of their particular qualities. These areas and the goals they are important for are identified on Map 6.

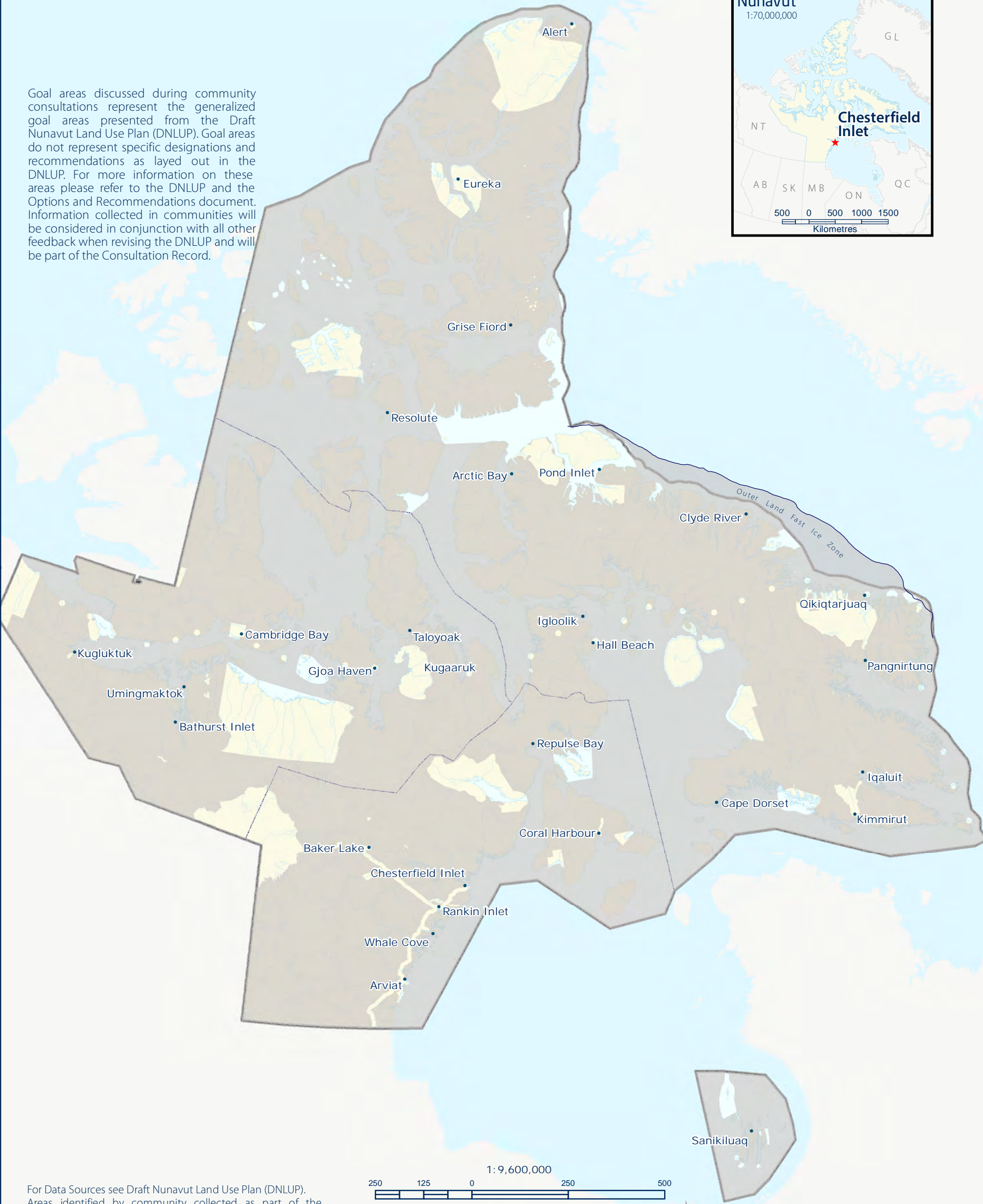






MU Goal areas from DNLUP discussed during community consultations

Goal areas discussed during community consultations represent the generalized goal areas presented from the Draft Nunavut Land Use Plan (DNLUP). Goal areas do not represent specific designations and recommendations as layed out in the DNLUP. For more information on these areas please refer to the DNLUP and the Options and Recommendations document. Information collected in communities will be considered in conjunction with all other feedback when revising the DNLUP and will be part of the Consultation Record.



For Data Sources see Draft Nunavut Land Use Plan (DNLUP). Areas identified by community collected as part of the Nunavut Planning Commissions Community Engagement Strategy during the Mapping Sessions for the DNLUP on November 21 & 22, 2013. Maps were digitized at the Nunavut Planning Commission. To be used for illustration purposes only as part of the Draft Nunavut Land Use Plan Consultation Process.



ᓄᓇᓂᓄᓐ ᐸᓐᓇᐱᓐᓴᓐ  
Nunavunmi Parnaiyiit  
Nunavut Planning Commission  
Commission d'Aménagement du Nunavut

Projection: Canada Lambert Conformal Conic, NAD83  
Produced by the Nunavut Planning Commission: (867) 983-4625, npc@nunavut.ca  
December-09-13





Additional BHC Goal areas identified during community consultations

Goal areas discussed during community consultations represent the generalized goal areas presented from the Draft Nunavut Land Use Plan (DNLUP). Goal areas do not represent specific designations and recommendations as layed out in the DNLUP. For more information on these areas please refer to the DNLUP and the Options and Recommendations document. Information collected in communities will be considered in conjunction with all other feedback when revising the DNLUP and will be part of the Consultation Record.




For Data Sources see Draft Nunavut Land Use Plan (DNLUP). Areas identified by community collected as part of the Nunavut Planning Commissions Community Engagement Strategy during the Mapping Sessions for the DNLUP on November 21 & 22, 2013. Maps were digitized at the Nunavut Planning Commission. To be used for illustration purposes only as part of the Draft Nunavut Land Use Plan Consultation Process.

2501250250500

1: 9,600,000

Kilometres



ᓄᓇᓂᓄᓐ ᐸᓐᓇᓂᓄᓐ

Nunavunmi Parnaiyiit

Nunavut Planning Commission

Commission d'Aménagement du Nunavut

Projection: Canada Lambert Conformal Conic, NAD83  
Produced by the Nunavut Planning Commission: (867) 983-4625, npc@nunavut.ca  
December-09-13

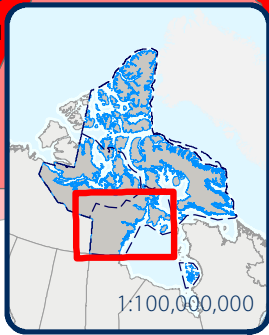


### 7.1 Areas identified for multiple goals

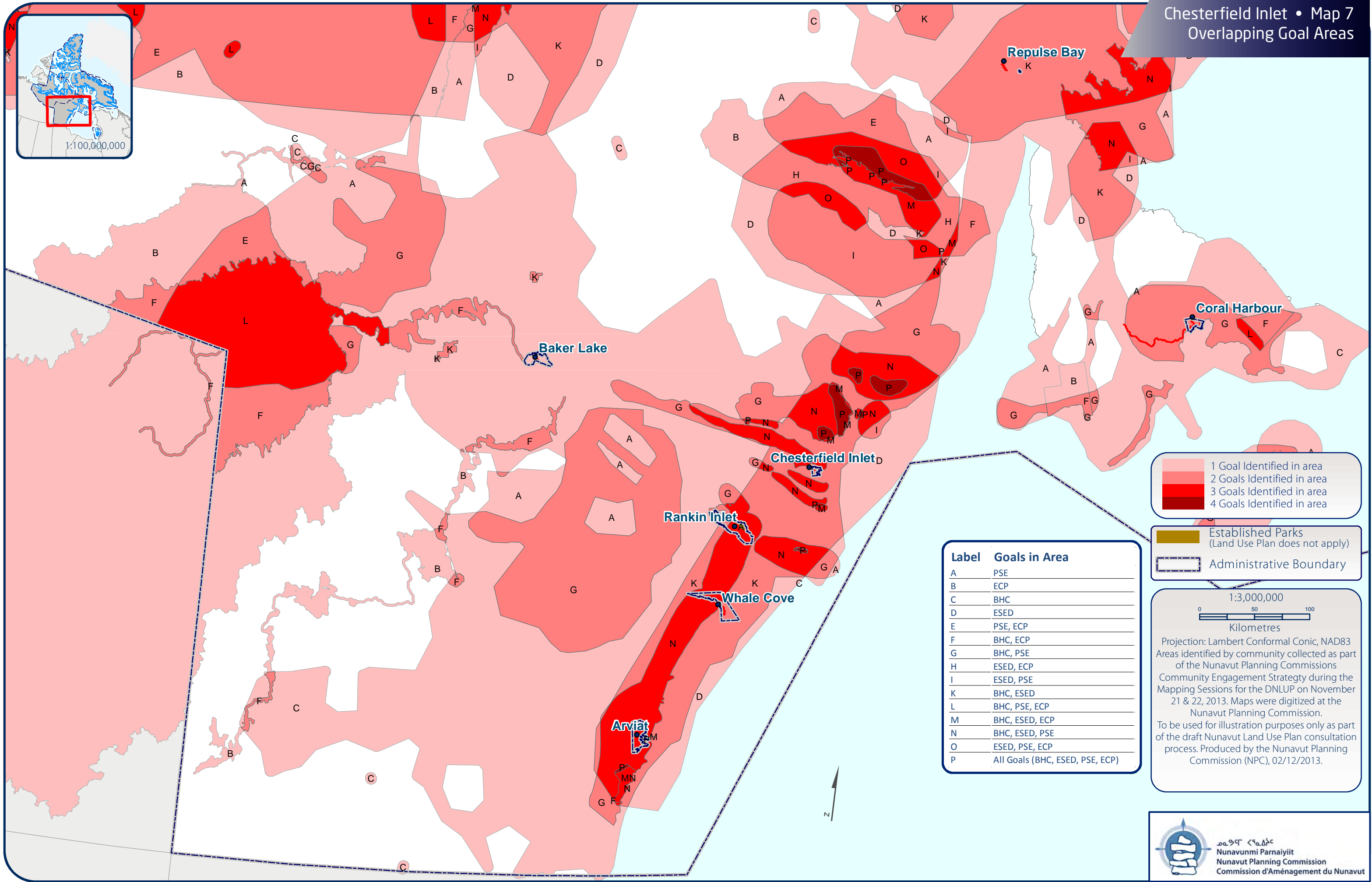
All areas discussed with the community as important for a particular goal are shown on Map 7. In some instances, areas have been identified as important for multiple goals. These areas, and the specific goals they are important to, are also shown on Map 7. In these areas, the NPC will take all of the identified goals and all other feedback into consideration when revising the DNLUP.







1:100,000,000



- 1 Goal Identified in area
- 2 Goals Identified in area
- 3 Goals Identified in area
- 4 Goals Identified in area

- Established Parks  
(Land Use Plan does not apply)
- Administrative Boundary

Label	Goals in Area
A	PSE
B	ECP
C	BHC
D	ESED
E	PSE, ECP
F	BHC, ECP
G	BHC, PSE
H	ESED, ECP
I	ESED, PSE
K	BHC, ESED
L	BHC, PSE, ECP
M	BHC, ESED, ECP
N	BHC, ESED, PSE
O	ESED, PSE, ECP
P	All Goals (BHC, ESED, PSE, ECP)

1:3,000,000

0 50 100  
Kilometres

Projection: Lambert Conformal Conic, NAD83  
Areas identified by community collected as part of the Nunavut Planning Commissions Community Engagement Strategy during the Mapping Sessions for the DNLUP on November 21 & 22, 2013. Maps were digitized at the Nunavut Planning Commission.  
To be used for illustration purposes only as part of the draft Nunavut Land Use Plan consultation process. Produced by the Nunavut Planning Commission (NPC), 02/12/2013.



# Appendix 1: Open House

During the open house, participants raised the following issues:

- Wants GN boundary expanded between Chesterfield Inlet and Rankin Inlet. Want equal boundary between towns (similar distance between towns and similar ownership of land). We didn't understand the boundaries when we negotiated it and want to change it now.
- The road to Manitoba is good idea but want to have a lot of input.
- Used to have lots of seal in the area. Since the mine in Baker Lake started shipping through Chesterfield Inlet we never see seals in the summer anymore. Only see them in the winter after the ships go.
- Hunt walrus in May/June near Chesterfield Inlet shore.
- Concern for walrus in Steensby Inlet if mine uses it.
- Caribou used to Pass Rankin Inlet in June and July. Now the route is very different.
- Go narwhale hunting in Repulse Bay.
- The proposed road from Manitoba isn't worth the money it will cost to develop it. Why destroy the land and culture for a road that will probably be used for drugs and bootlegging.
- Mining is short term. Life of a mine is around 25 years. It's too short given the damage it does. I want to see long term economic solutions for Nunavut.
- North of Chesterfield Inlet around Cape Fullerton there's an area where the RCMP were first established in Nunavut in the 1900's. There are graves around the area as well. It isn't an established historic site. Would like to see it established.
- Some people want to see a road go from Chesterfield Inlet to Baker Lake because of the Areva project. A road will have less impact on marine life than the shipping that is currently done.
- Caribou after mining started now do not come up from Rankin. We are lucky we can cross the inlet to get to undisturbed caribou to north.
- Also no sea mammals since the shipping started for the mine. Sea mammals are disturbed by the vibration, noise pollution from the ship. There is supposed to be a wildlife observer on ships.
- Chris Grosset and Marla with Arlluk Consulting in Ottawa did a heritage and archaeological study for Chesterfield Inlet.
- Arctic Char commercial fishing happens every year and I have noticed less char.
- Barges coming and going into inlet – lots of traffic – we should charge - what's our toll for using the inlet?





## Appendix 2: Elected Officials Meeting

The elected officials meeting was attended by the Mayor and members of the Hamlet Council and HTO. During the meeting, participants raised the following issues:

- Concerned about location of water reservoir and sewage lagoon in relation to airstrip. Also interested in expanding municipal boundary, and constructing a road inland to support recreational activities.
  - The Commission advised that the Government of Nunavut Department of Community and Government Services is the main contact for these issues.
- Concerned about caribou calving grounds being disturbed by mining companies. Chesterfield Inlet has been greatly impacted by companies. We have heavy ship traffic and our mammals have disappeared. Helicopters create huge amounts of noise that disturb animals. It does not appear that companies are following the rules about low level flights.
- Concerned about not being aware of mining camps that are coming on line. Agnico is in a calving area. We are not receiving information. If they had come to us in the beginning we would have objected greatly. They are also working in caribou migration routes.
- Concerned about being unaware of the activity to explore until after it was approved. We have already been affected by the mining on the land and now with the shipping marine mammals are disappearing. We have been living off this land for centuries and mining over the past few years has changed all of that.
- Every July there is caribou herd migration from Rankin towards to Chesterfield. Elders have always said do not shoot the first herd. But people do not listen. Because people shoot the first herd and no animals are coming this way any longer. It applies to hunters in Rankin Inlet.
  - The Commission advised that the information would be passed on.
- Concerned about restrictions being placed on the locations of cabins.
- Concerned about information not being shared regarding spills.
- Concerned about the number of helicopters.





## Appendix 3: Questions and Answers

During the community workshop, there was a question and answer period, which included a discussion of the following topics:

- Concern that marine traffic from Agnico Eagle and mines have affected animals (marine and land). Believe that caribou herds no longer come near the town because of blasting at Meliadine mine. 'It affects us greatly.' Believe that the increase in shipping due to mining activity is too much for the bay. 'It's depressing being a hunter knowing that the number of animals are depleting.' For 14 years they expect to travel, but if they build roads it would be much better for us here.
  - o The Commission answered that the concerns are noted, and it's important that you share these issues in detail during the mapping session so we record them accurately. It will be documented and we will be back to verify the information.

## Appendix 4: Community Workshop Scanned Maps

Two groups completed the mapping session to identify important areas. This Appendix contains the maps that were used by participants to identify areas that are important to the following land use planning goals:

- Protecting and Sustaining the Environment
- Encouraging Conservation Planning
- Building Healthier Communities
- Encouraging Sustainable Economic Development
- Mixed Use

Also included on each map is a reference table that includes the specific values that were identified for the area.

During the mapping portion of the community workshop, the following concerns were raised that did not apply to a specific area that was identified on the maps:

- Rankin is a new community; Chesterfield Inlet is an old community. Since Rankin Inlet has been a community, caribou herd has not been coming to this area. When Meliadine project is operational, routes of caribou will be altered again. Whale Cove had family living there some time before it became a community.
- Rankin Inlet and Chesterfield Inlet will be greatly affected (by Meliadine project)- Whales, seals by mine marine activity
- In addition to the problem of marine shipping impacting marine mammals, there is the Manitoba road proposal. Uranium delivery should depart from Chesterfield because it is safer. Ships carrying uranium could be shipwrecked. A roadway is safer.
- Marble Island ECP-2(109) is historical land mark with four ship wrecks from turn of the century and should be protected. It is significant to the people and for

visitors who come to this island; they should crawl to the high tide mark for the respect of the environment.

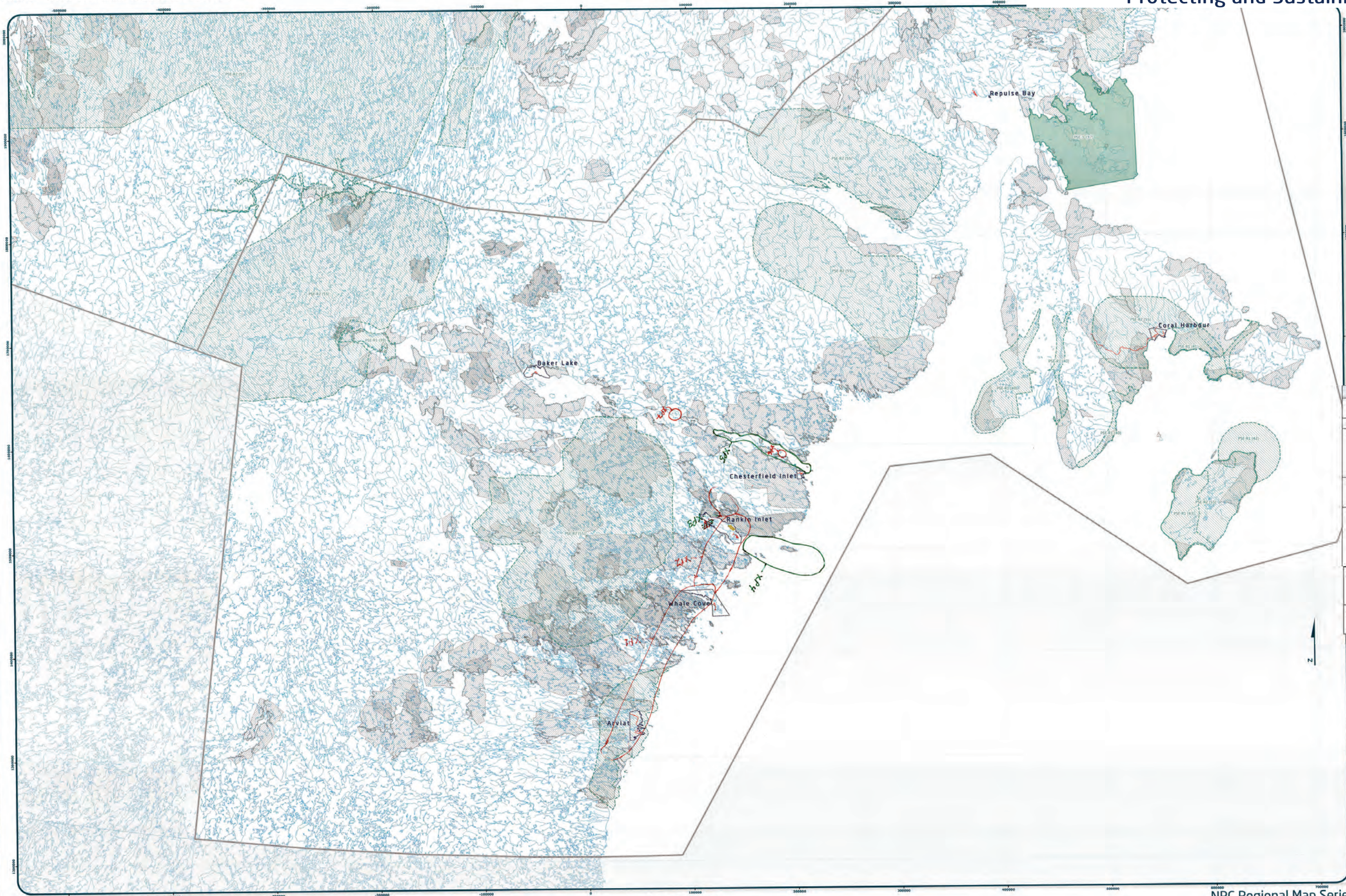
- Drinking water in this community is poor for the town, it is surrounded by sewage lagoon, airport dust upon planes taking off and the local garbage dump, the problem is on all three sides of the drinking water.
- Caribou calving ground would need protection from exploration activities. Marked on PSE map as recommendation.
- Seals are rare in the area now.
- Arctic terns are rare in the area now. Used to be lots of them. Have to travel further to see terns.
- Sandpipers- used to see a lot of them but now never see them.
- Agree with Use and Occupancy Mapping data for community use (BHC-R2).
- Drinking water lakes - First Lake, Second Lake, Third Lake, Tasialuk Lake, Qanak Checkers Lake.
- Rather preserve the land how it is right now. Support economic development of fishing out in the ocean during the summer. We do enough commercial fishing in summer season, leave the rivers alone.
- Not happy to see exploration come in and not clean up and not give anything to the community.



Chesterfield Inlet - Group 1 Results  
Protecting and Sustaining the Environment

PROTECTING AND SUSTAINING THE ENVIRONMENT (PSE)

Scale 1:1,000,000



**Map Legend**

— Roads  
— Established Parks (Land Use Plan does not apply)  
— Trust Owned Lands (Surface)  
— Trust Owned Lands (Sub-surface)  
— Administrative Boundary

**Designations**

Designations	Permitted Uses	Prohibited Uses
Zone 1	Resource, Recreation, Research	All Other Uses
Zone 2	Resource, Recreation, Research	
Zone 3	Resource, Recreation, Research, Marine Communications and Electrical Cables	

**Reference Table for Recommendations**

Code	Comments
XP01	this is an area where caribou have migrated for eons and should be protected
XP02	Traditional migration route for caribou
XP03	Agnico Eagle area - Meliadine project. We are concerned about this area where Agnico Eagle is operating, this is where we hunt caribou and it is a prime migration for the herd we depend on for food
XP04	Once activity picks up (Meliadine project), this area here will lose its marine mammals when shipping intensifies
XP05	This area is losing sea mammals since Agnico Eagle came (Meadowbank). Used to harvest Beluga and all species of seals here. In same area, when the Kiggavik project opens this area will be affected worse by marine traffic.
XP06	Ellis Island, Morris Island, South and North Imulite Islands. Tanker sits for a long time here, impacts from vibration on sea mammals
XP07	Helicopter Island - Another tanker sits for a long time, impacts from vibration on sea mammals

**Scale**

0 20 40 60 Kilometers

**Coordinate System**

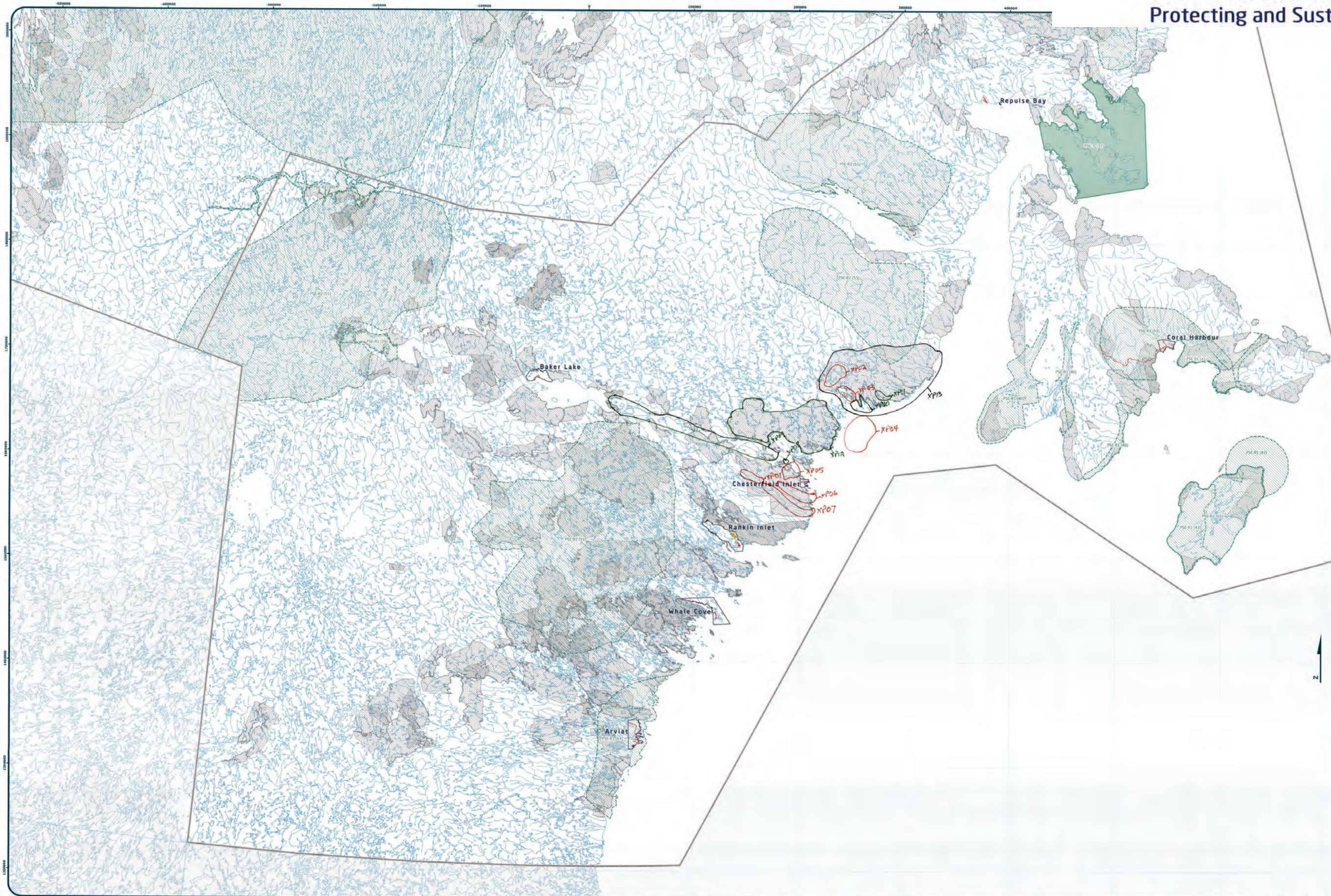
EPSG 42304 LCC  
Projection: Lambert Conformal Conic  
Datum: North American 1983  
False Easting: 0.0000  
False Northing: 0.0000  
Central Meridian: -95.0000  
Standard Parallel 1: 49.0000  
Standard Parallel 2: 77.0000  
Latitude Of Origin: 49.0000  
Units: Meter

**Map Information**

Map of Chesterfield Inlet area, Nunavut, Canada. This map is to be used for reference purposes only by the NPC. Any further use of this map or data must be authorized by contacting the Nunavut Planning Commission at (867) 969-4625 or email [nunavutplanning@nunavut.ca](mailto:nunavutplanning@nunavut.ca) Tuesday, October 15, 2013



# Chesterfield Inlet - Group 2 Results Protecting and Sustaining the Environment



Designations	Permitted Uses	Prohibited Uses
PS-1 (1)	Tourism, Recreation, Research	All other uses
PS-2 (1)	Tourism, Recreation, Research	
PS-3 (1)	Tourism, Recreation, Research, Marine Infrastructure, Marine Communications and Electrical Cables	

Reference Table for Recommendations	
PS-1	Project Provisions located in a Key Bird Habitat Site should take into account impacts on the migratory birds that rely on this area.
PS-2	Project Provisions located in historic caribou calving grounds should take into account impacts on caribou calving, post calving areas and migration routes.
PS-3	Project Provisions located in and/or near known caribou sea ice crossing areas should take into account impacts that may impact the ability of caribou to cross the ice.
PS-4	Project Provisions located in portions of the Great Bear Lake watershed in Nunavut should take into account transboundary impacts that may reduce the conservation value of the watershed.

Code	Comments
XP01	Caribou calving grounds
XP02	Caribou calving grounds
XP03	Key bird area. Many types of birds and cod here as well.
XP04	Walrus area.
XP05	Char routes. Swim up in fall and back to ocean in the spring.
XP06	Char routes. Swim up in fall and back to ocean in the spring.
XP07	Char routes. Swim up in fall and back to ocean in the spring.
XP08	This is where ships sit. All summer there are fuel transfers from larger ships to smaller ones that go through Chesterfield Inlet to Baker Lake and the mine. Concerned about fuel spills. The fuel runs downstream from Baker Lake out to the ocean and concerned for all wildlife around there.
XP09	Concern for wildlife (ocean, land, caribou crossing) due to potential fuel spill. Concern that not all ships in the area have a local person on the ship when in the channel.
XP10	Beluga whale
XP11	Ranger seal and arctic char
XP12	white fish, arctic char, land locked char, lots of fish and eels
XP13	white fish, arctic char, land locked char, lots of fish and eels

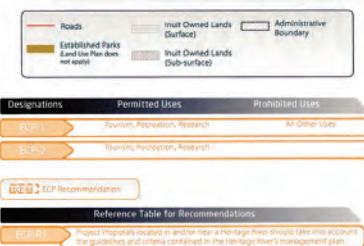
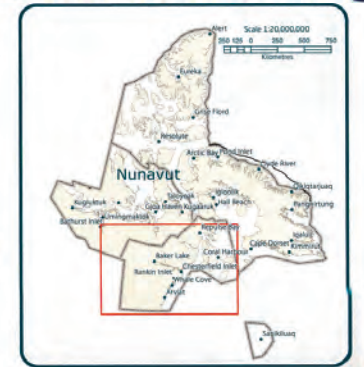
10	14
11	15
12	16
13	17
14	18
15	19



Coordinate System: EPSG 42304 UTM  
Projection: Lambert Conformal Conic  
Datum: North American 1983  
False Easting: 0.0000  
False Northing: 0.0000  
Central Meridian: -95.0000  
Standard Parallel 1: 49.0000  
Standard Parallel 2: 77.0000  
Latitude Of Origin: 49.0000  
Units: Meter



## Chesterfield Inlet - Group 1 Results



Code	Comments
IC08	Cape Fullerton, Historical significance
IC09	Depot Island, Little island used by whalers years ago. They came in from Igloolik. Used to be a place to mine iron ore for implements. Traditional historic site. Still some old whale blubber melting pots.

**General Planning Commission**  
**Community Consultation Form**  
**Land Use Mapping Section**

<b>Community:</b>	
<b>Location:</b>	
<b>Region:</b>	
<b>Date:</b>	
<b>Community PRA</b>	
<b>Map #</b>	

**Signatures of the Community signify a permission form to conduct mapping session as informants.**

1.		16.	
2.		17.	
3.		18.	
4.		19.	
5.		20.	
6.		21.	
7.		22.	
8.		23.	
9.		24.	
10.		25.	
11.		26.	
12.		27.	
13.		28.	
14.		29.	
15.		30.	

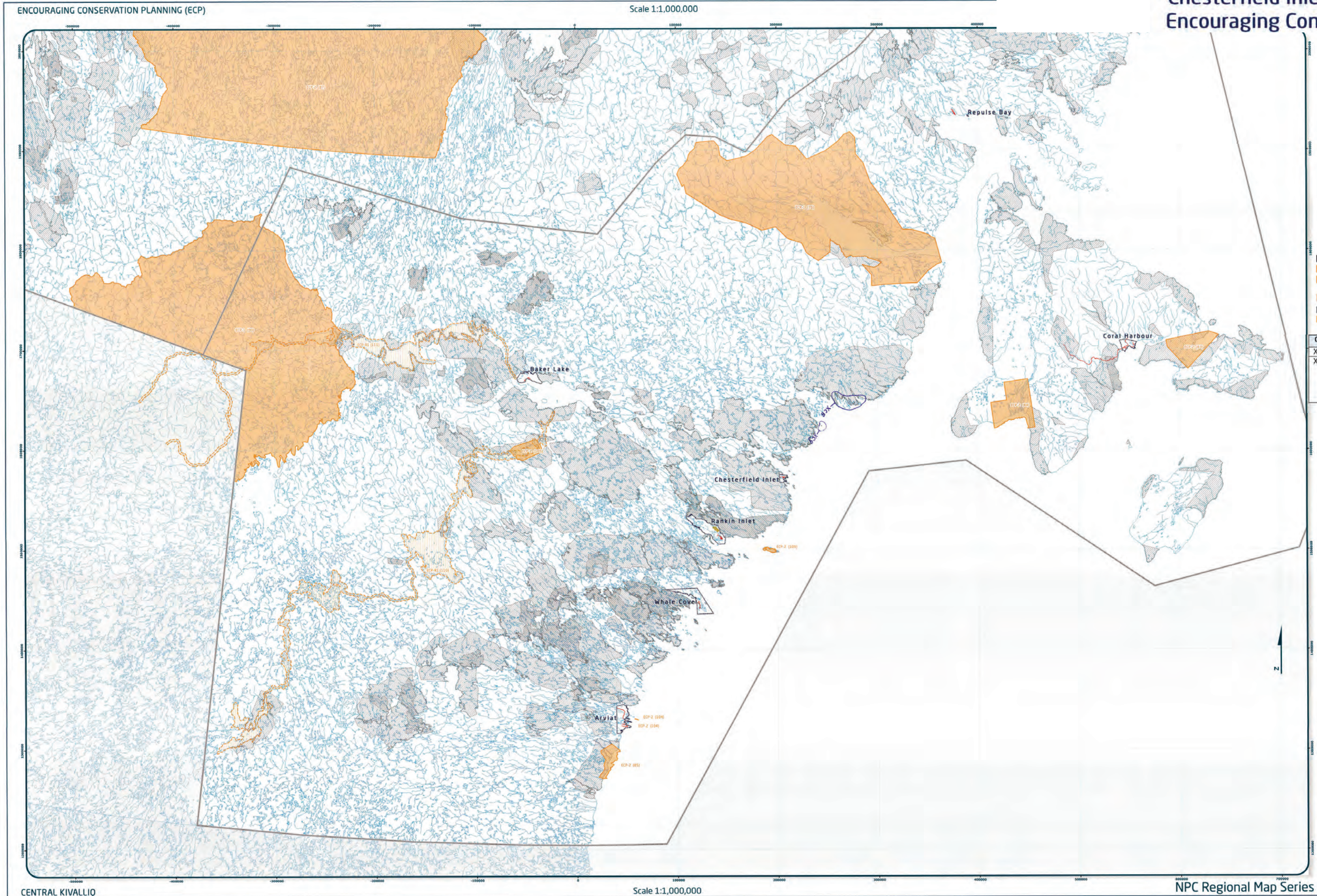
**Signature of Mapper:** \_\_\_\_\_




 وزارة الموارد الطبيعية والبيئة  
 Ministry of Natural Resources  
 and Environment  
 Commission of Management of Natural Resources

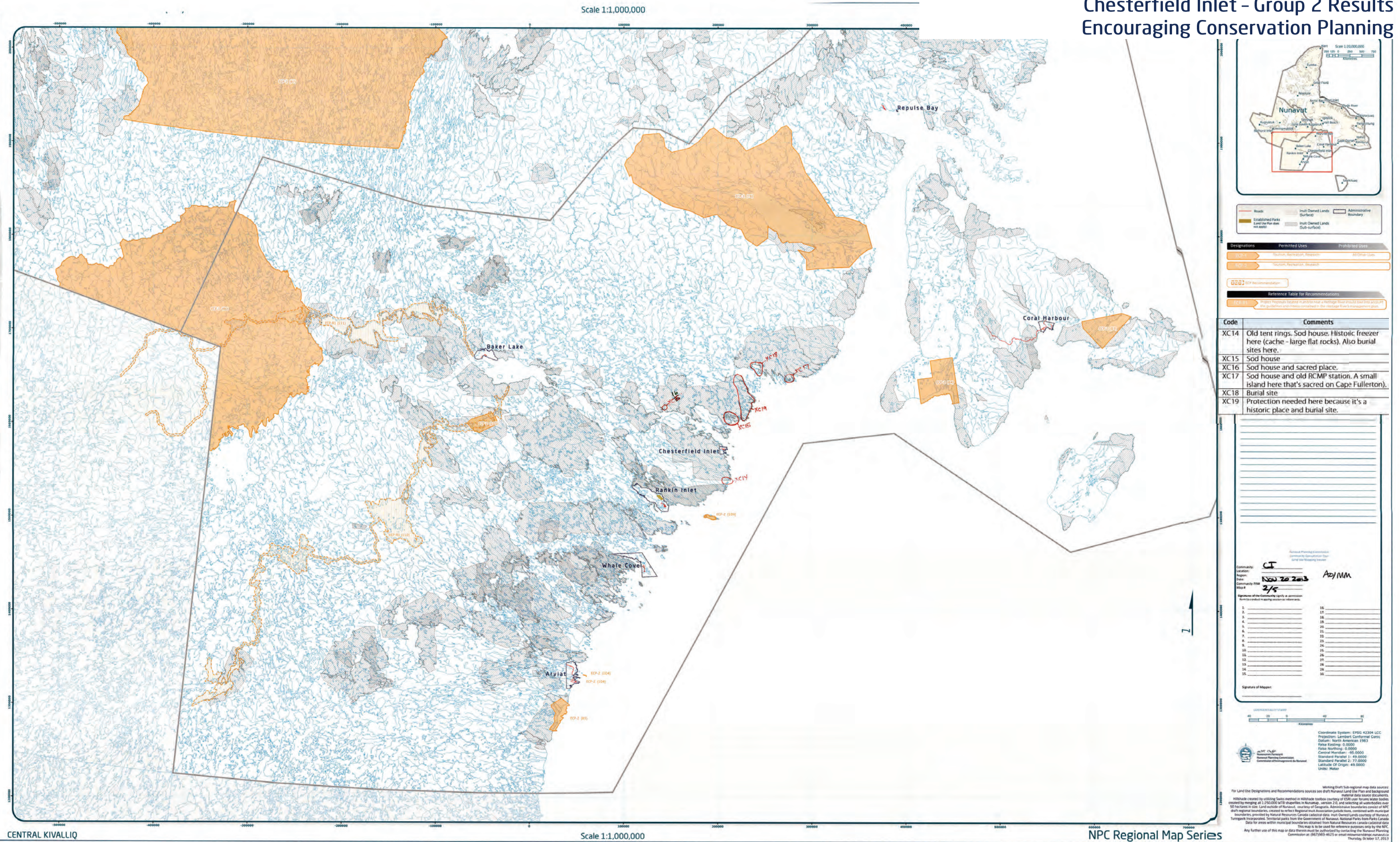
Coordinate System: EPSG 42304 LCC  
 Projection: Lambert Conformal Conic  
 Datum: North American 1983  
 False Easting: 0.0000  
 False Northing: 0.0000  
 Central Meridian: -95.0000  
 Standard Parallel 1: 49.0000  
 Standard Parallel 2: 77.0000  
 Latitude of Origin: 49.0000  
 Units: Meter

Any further use of this map or data herein must be authorized by contacting the Nunavut Land Use Management Corporation at (867)783-4625 or email [nlumc@nlumc.ca](mailto:nlumc@nlumc.ca).  
Thursday, April 17, 2020





## Chesterfield Inlet - Group 2 Results Encouraging Conservation Planning

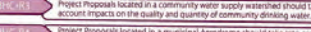




The map shows the province of Nunavut with its major cities and towns labeled. A red rectangle highlights the study area in the south-eastern part of the province, near the border with the Northwest Territories. The map includes a scale bar (1:20,000,000) and a north arrow.



Designations	Permitted Uses	Prohibited Uses
BR-C-1	Roads, Railways, Utilities and Corridors	
BR-C-2	Roads, Railways, Utilities and Corridors	
BR-C-3	All uses except those Prohibited	Mining
BR-C-4	Hydro electrical and related infrastructure	
BR-C-5	Tourism, Recreation and Research, Municipal Services	
BR-C-6	Municipal Services	All Other Uses
BR-C-7	Municipal Services	
BR-C-8	Remediation and Reclamation Activities	All Other Uses
BR-C-9	Remediation and Reclamation Activities, DND Operations and Activities	All Other Uses
BR-C-10	DND Operations and Activities	All Other Uses



Reference Table for Recommendations	
BHC- R1	Project Proposals located in the Huailu River Area of Interest should take into account impacts on the cultural value of the area.
BHC- R2	Project Proposals located in areas of traditional land use should take into account impacts on the cultural value of the area.
BHC- R3	Project Proposals located in a community were supply watershed should take into account impacts on the quality and quantity of community drinking water.
BHC- R4	Project Proposals located in a municipal Aerodrome should take into account impacts on aerodrome safety.

Code	Comments
CI10	Whole area important for hunting, subsistence living for land and sea mammals. During spring the floe edge is where we hunt

[illegible]

Coordinate System: EPSG 42304 LCC  
 Projection: Lambert Conformal Conic  
 Datum: North American 1983  
 False Easting: 0.0000  
 False Northing: 0.0000  
 Central Meridian: -95.0000  
 Standard Parallel 1: 49.0000  
 Standard Parallel 2: 77.0000  
 Latitude Of Origin: 49.0000  
 Units: Meter

Working Draft Full-scale regional data sources  
Land Use Designations and Recommendations sources see draft Nunavut Land Use Plan and background material data sources

Use and Occupancy data from NPIC Use and Occupancy material data sources

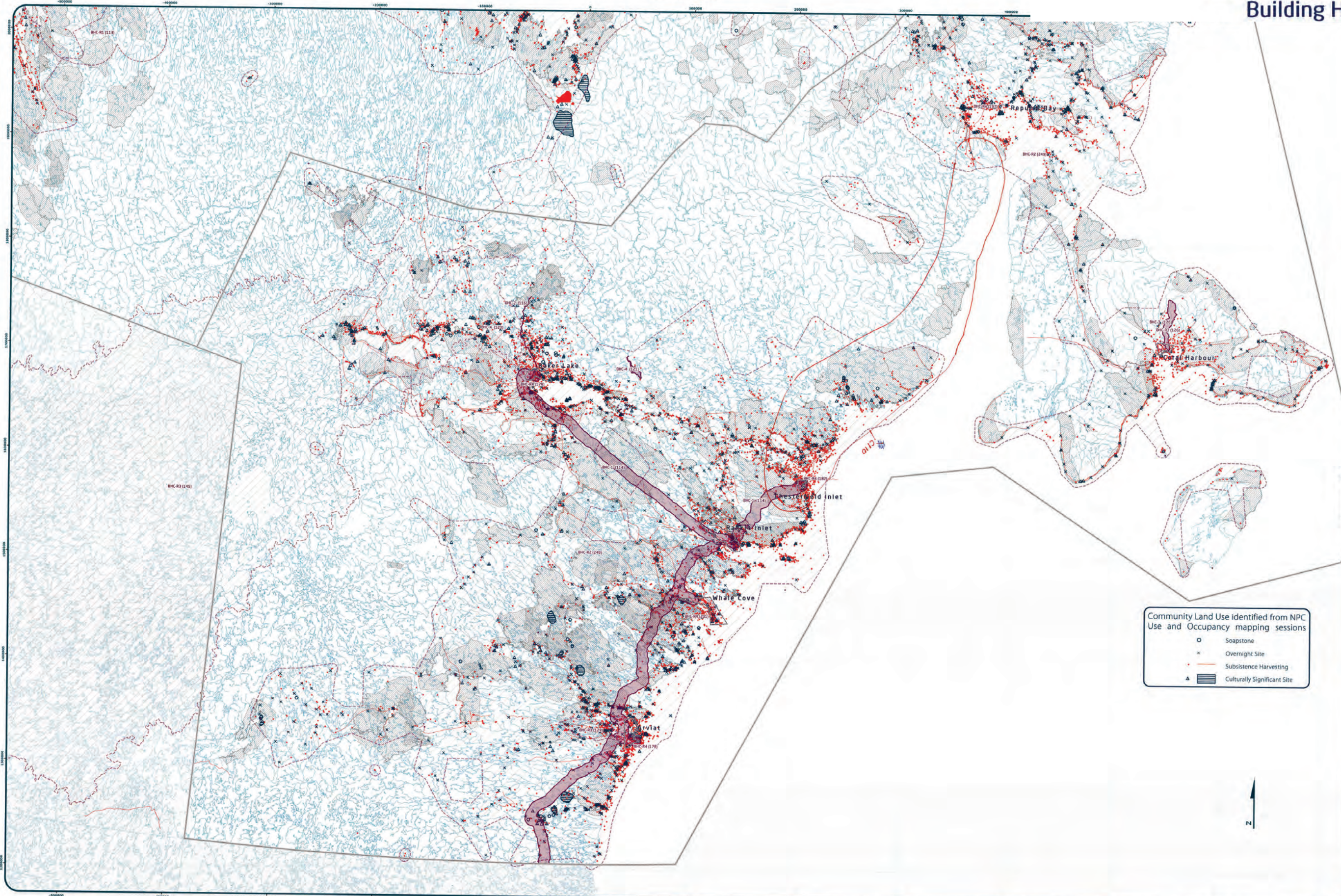
Included created by utilizing Swiss method in household inventory (country of ESA use forms water bodies) to a sampling of 1:50,000 of 1:250,000 scale maps of the Nunavut region, including the 1:250,000 scale maps in size, land outside of Nunavut, country of Georgia. Administrative boundaries consist of NPIC regional boundaries, created to reflect Regional trust Association jurisdictions, combined with municipal boundaries, provided by Natural Resources Canada (NRC) and the Nunavut Government. The Nunavut Government incorporated Territorial parks from the Government of Nunavut, National Parks from Parks Canada. Data for areas within municipal boundaries obtained from Natural Resources Canada cadastral data.

This is a working draft of the map. It is not intended to be used for any other purpose. It is not intended to be used for any other purpose. It is not intended to be used for any other purpose.

Any further use of this map or any data therein must be authorized by contacting the Nunavut Planning Commission at: (867) 993-6255 or by email at: [nunavutplanning@nunavut.ca](mailto:nunavutplanning@nunavut.ca)

Thursday, October 17, 2013

NPC Regional Map Series



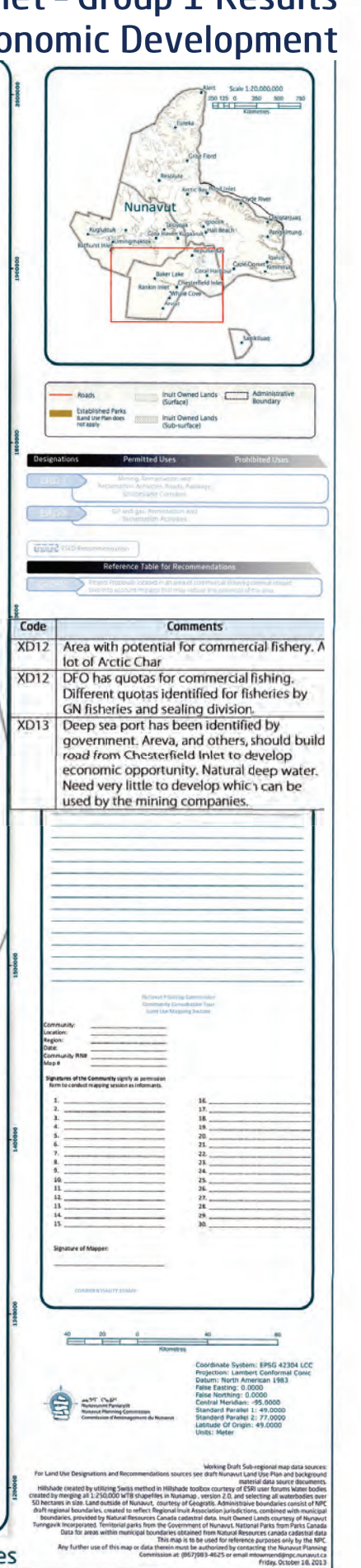
Community Land Use identified from NPC Use and Occupancy mapping sessions

- Soapstone
- × Overnight Site
- Subsistence Harvesting
- ▲ Culturally Significant Site

Scale 1:1,000,000



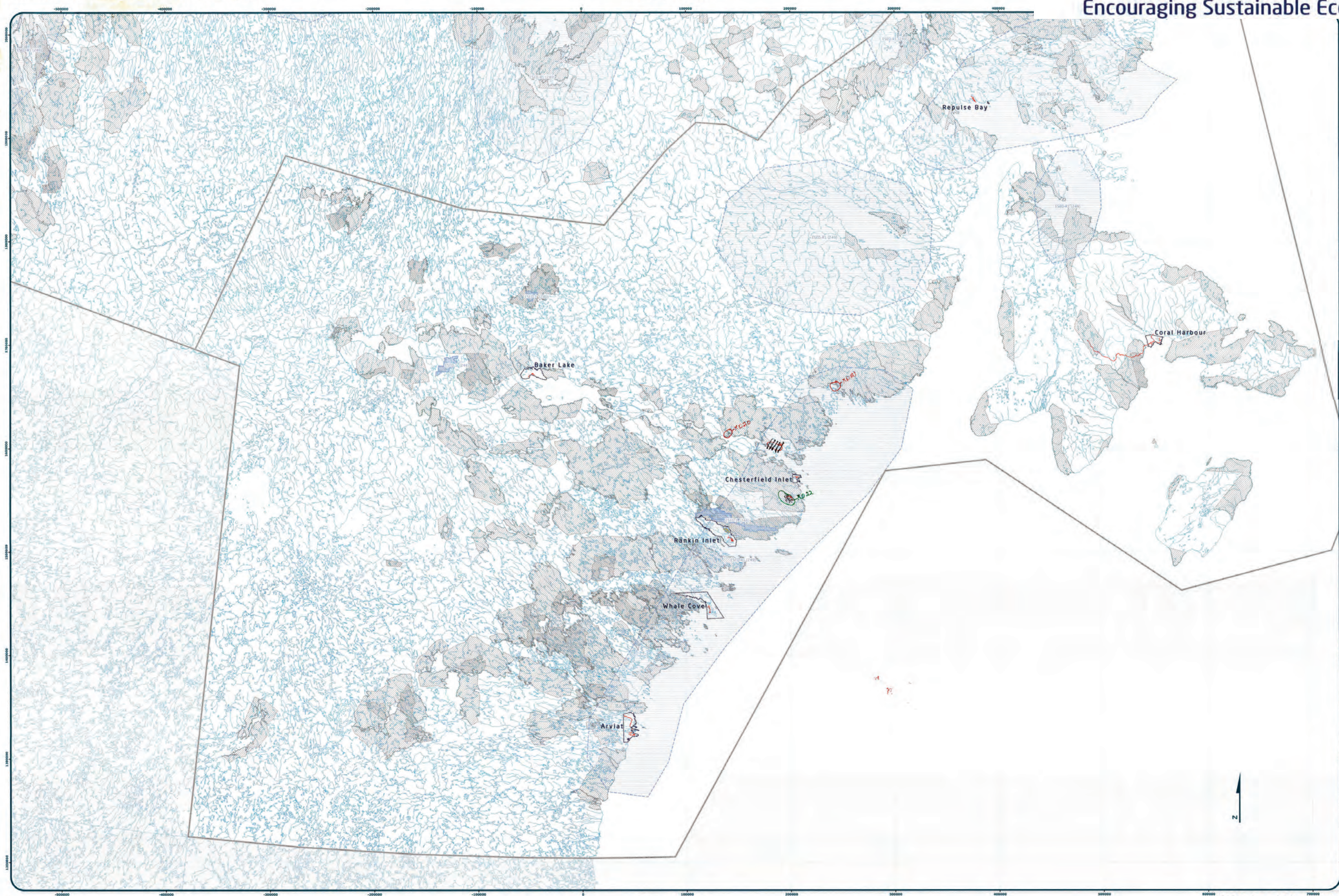
## Encouraging Sustainable Economic Development





## ENCOURAGING SUSTAINABLE ECONOMIC DEVELOPMENT (ESD)

Scale 1:1,000,000













## CENTRAL KIVALLIQ

Scale 1:1,000,000








NPC Regional Map Series



Designations	Permitted Uses	Prohibited Uses
  	Mining, Agricultural and Recreational Activities, State Railways and related Activities	
 	Oil and gas, Transportation and Recreational Activities	
 		

**Legend:**  Permitted  Conditional  Prohibited

**Reference Table for Recommendations**

Designation	Permitted Uses	Prohibited Uses
  	Mining, Agricultural and Recreational Activities, State Railways and related Activities	
 	Oil and gas, Transportation and Recreational Activities	
 		

Code	Comments
XD20	Caribou sport hunting at Ranger Seal Bay
XD21	Soapstone
XD22	Mining camp needs to be cleaned up at Josephine Lake

This is a blank sheet of white paper with horizontal blue ruling lines. The lines are evenly spaced and run across the width of the page. There are approximately 20 lines visible. The paper has a slight shadow on its right side, suggesting it is part of a bound notebook or folder.

Neighborhood Planning Commission  
Community Consultants Team  
Lead: Joe Manning, Section

Community: C2  
Location: \_\_\_\_\_  
Region: \_\_\_\_\_  
Date: NOV 20 2013  
Community PIN# \_\_\_\_\_  
Map #: 1/5 AD/MM

Signatures of the Community signify as permission form to conduct mapping session as informants.

1.	_____	16	_____
2.	_____	17	_____
3.	_____	18	_____
4.	_____	19	_____
5.	_____	20	_____
6.	_____	21	_____
7.	_____	22	_____
8.	_____	23	_____
9.	_____	24	_____
10.	_____	25	_____
11.	_____	26	_____
12.	_____	27	_____
13.	_____	28	_____
14.	_____	29	_____
15.	_____	30	_____

© 2006 The Authors  
Journal compilation © 2006 Blackwell Publishing Ltd

Signature of Manager:

\_\_\_\_\_

CONFIDENTIALITY STATEMENT:



Coordinate System: EPSG:42304 LCC

Projection: Lambert Conformal Conic  
Datum: North American 1983

False Easting: 0.0000  
False Northing: 0.0000  
Central Meridian: -95.0000

 Numerusnumi annuagilt Numerus Planning Commission Commission d'Aménagement (de Numerus)	Gender: Female: -99.00000 Standard Parallel 1: 49.0000 Standard Parallel 2: 77.0000
---	---

Latitude Of Origin: 49.0000  
Units: Meter

Working Draft Sub-regional map data sources:

For Land Use Designations and Recommendations sources see draft Nainivut Land Use Plan and background material/data source documents.

50 hectares in size. Land outside of Nunavut, courtesy of Geogratis. Administrative boundaries consist of NPC

draft regional boundaries, created to reflect Regional Inuit Association jurisdictions, combined with municipal boundaries, provided by Natural Resources Canada cadastral data. Inuit Owned Lands courtesy of Nunavut.

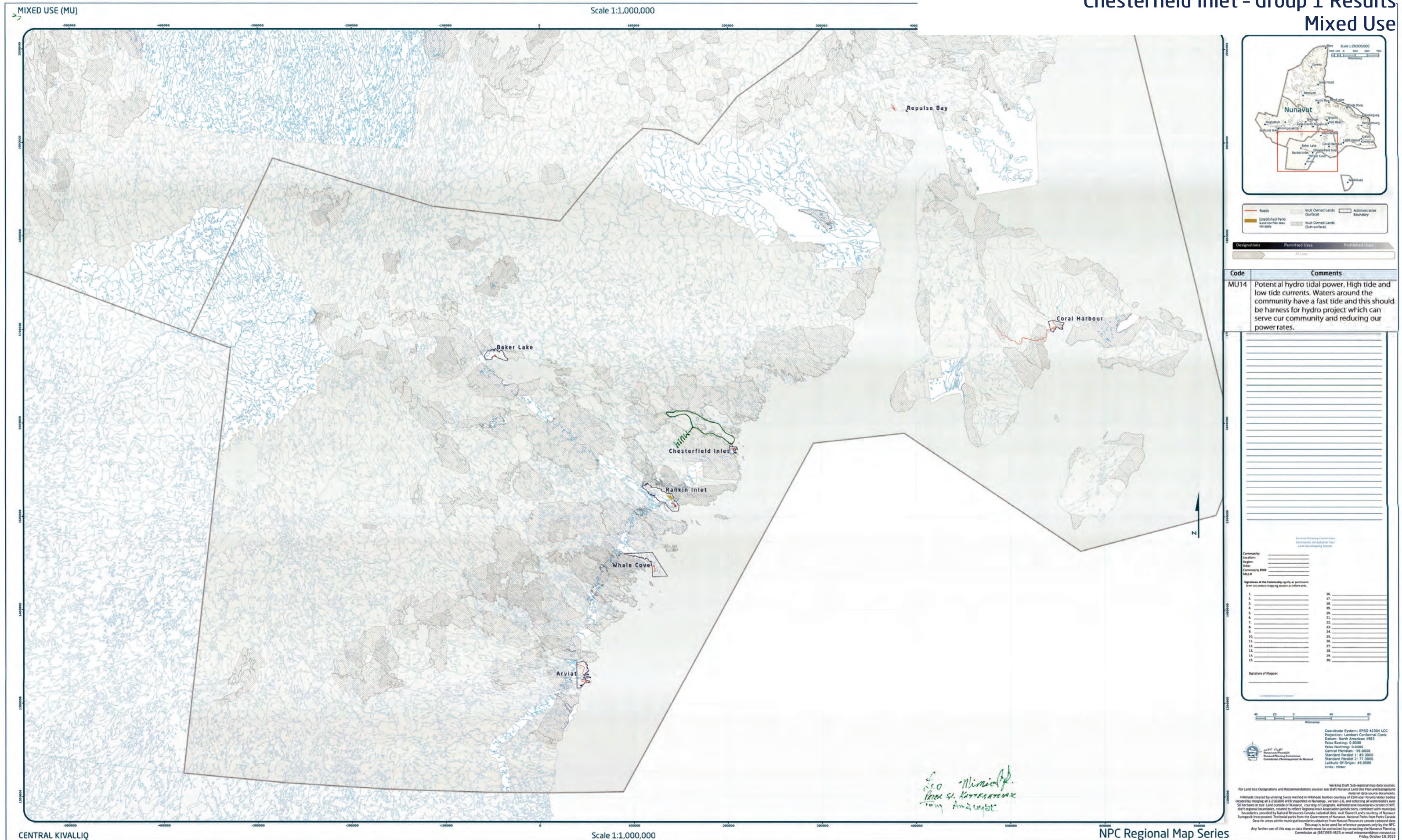
Data for areas within municipal boundaries obtained from Natural Resources Canada cadastral data.

Any further use of this map or data therein must be authorized by contacting the Nunavut Planning Commission at: (867)983-4625 or email [info@nwc.nunavut.ca](mailto:info@nwc.nunavut.ca)

Friday, October 18, 2013

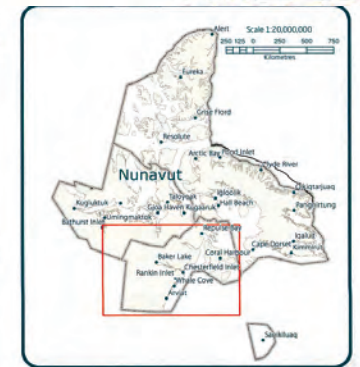


## Chesterfield Inlet - Group 1 Results





## Chesterfield Inlet - Group 2 Results



Designations	Permitted Uses	Prohibited Uses
Ag-1	All Uses	

Code	Comments
------	----------

	[no comments]
--	---------------

This image shows a single sheet of white paper with horizontal blue ruling lines. The lines are evenly spaced and run across the width of the page. On the left side, there is a vertical margin containing three sets of numbers: "1708-0090" at the top, "1688-0090" in the middle, and "1668-0090" at the bottom. These numbers appear to be part of a form or document header. The rest of the page is blank except for the ruling lines.

Removal Mapping Committee  
 Community Classification Panel  
 Local use Mapping Section

---

Community: CT  
 Location: \_\_\_\_\_  
 Region: Northwest  
 Date: Nov 20 2013  
 Community ID# 5A  
 Map # 5A

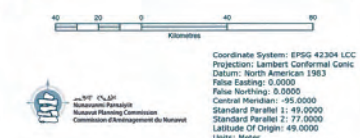
AO/WH

Signatures of the Community agents in permission  
 Area to conduct mapping section as follows:

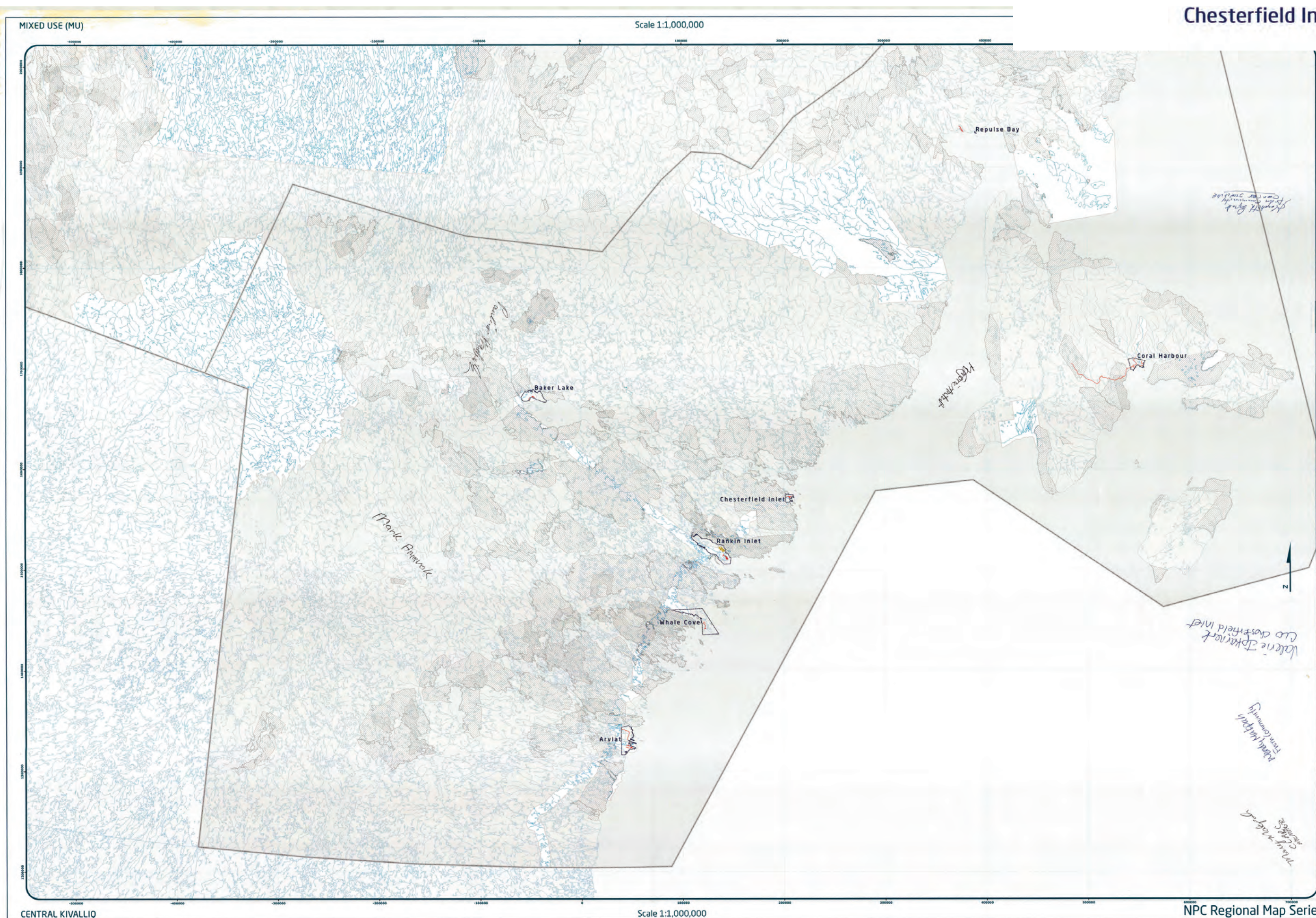
1.	16
2.	17
3.	18
4.	19
5.	20
6.	21
7.	22
8.	23
9.	24
10.	25
11.	26
12.	27
13.	28
14.	29
15.	30

Signature of Mapper: \_\_\_\_\_

COMMUNITY CLASSIFICATION



For Land Use Designations and Recommendations sources see draft Working Draft Sub-regional map data source  
Habitats created by utilizing Swiss data from the Habitatatios database of ESR-use forms water water  
created by merging all 1:250,000 MTH shapfiles in Nunavut, version 2.0 and selecting all water bodies  
50 hectares in size. Land outside of Nunavut, country of Germany. Administrative boundaries current  
draft regional boundaries, created to reflect Regional Joint Association jurisdiction, combined with municipal  
boundaries, provided by Natural Resources Canada. Administrative boundaries current  
Ternegvik Incorporated. Territorial parks from the Government of Nunavut. National Parks from Parks Canada  
Data for areas within municipal boundaries are obtained from Natural Resources Canada  
This map is to be used for reference purposes only by the  
Any further use of this map or data must be authorized by contacting the Nunavut Planning  
Commission at: (867)783-4625 or email [nunavutplanning@mun.ca](mailto:nunavutplanning@mun.ca)  
Friday, October 18, 2013





## Appendix 5: Follow-up Meeting

The NPC returned to the community and reviewed a draft version of this report with the Hamlet Council and the Hunters and Trappers Organization. The meeting included:

- A presentation of a draft version of this report
- An overview of the mapped information that was recorded for each topic:
  - Protecting and Sustaining the Environment
  - Encouraging Conservation Planning
  - Building Healthier Communities
  - Encouraging Sustainable Economic Development
  - Mixed Use
- General discussion and comments including:
  - Opportunities to provide additional comments.
  - Concerns were raised about the level of noise that is created and the disturbance on caribou. Helicopters are viewed as a problem not just coming and going from Chesterfield but also from Rankin Inlet.
    - The NPC advised that staff have been in discussions with GN about these concerns and the DFO and Discovery Air have also been contacted to try and find solutions.
  - Concerns were raised about the Hamlet Boundary.
    - The NPC advised that the GN needs to be contacted on this matter and that the Commission could raise that concern. Also advised that the NPC can put in place restrictions that would manage land use around the Hamlet Boundary.