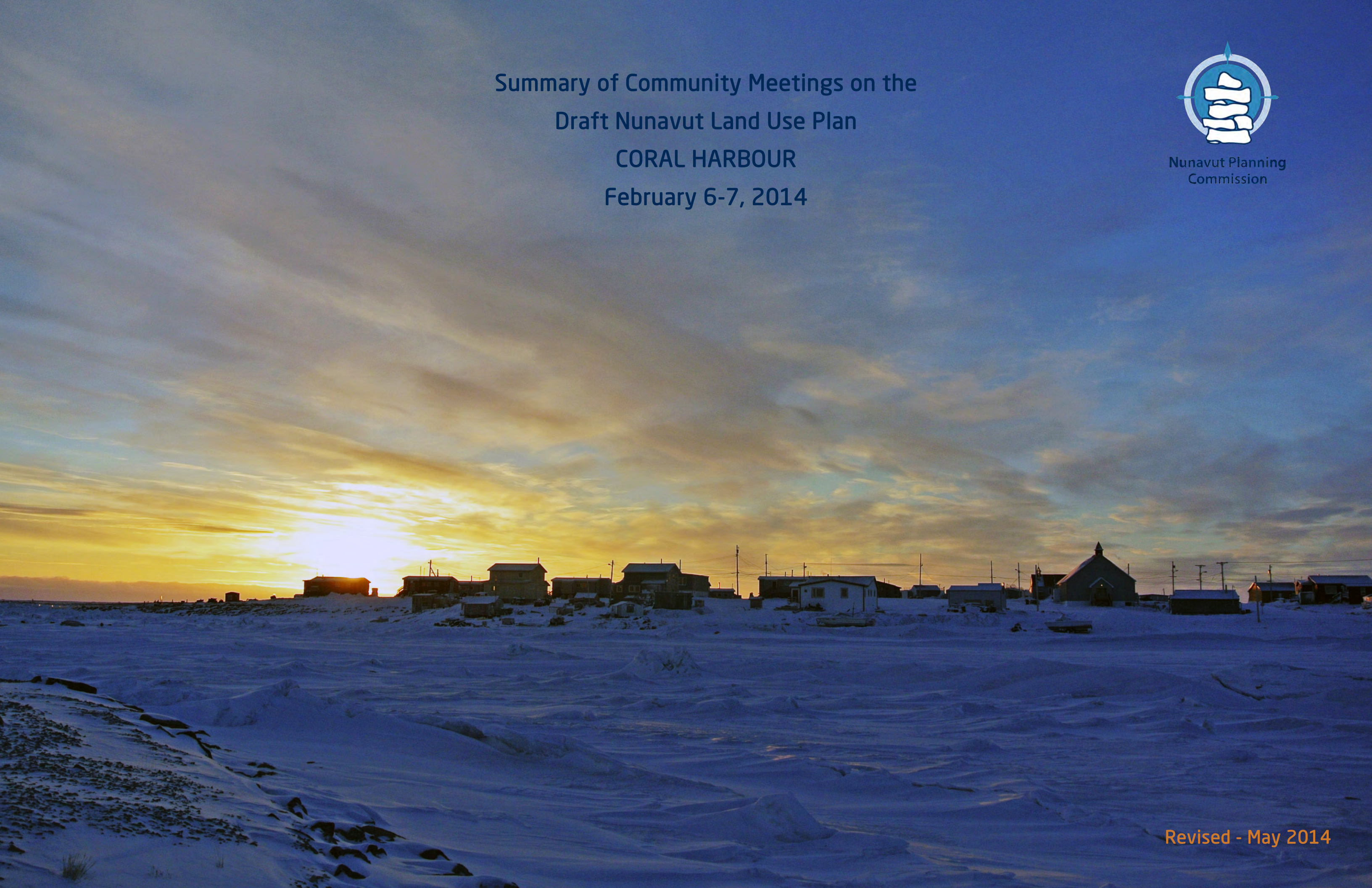


Summary of Community Meetings on the
Draft Nunavut Land Use Plan
CORAL HARBOUR
February 6-7, 2014



Nunavut Planning
Commission



Revised - May 2014

Contents

Introduction	3	Appendix 1: Open House	17
1.1 Context	3	Appendix 2: Elected Officials Meeting.....	18
1.2 Purpose.....	3	Appendix 3: Questions and Answers	19
1.3 Methodology.....	3	Appendix 4: Community Workshop Scanned Maps.....	20
1.4 Public Awareness	3	Appendix 5: Wrap Up Session.....	35
1.5 Community Population and Participation.....	3	Appendix 6: Follow-up Meeting.....	37
 Protecting and Sustaining the Environment.....	4		
2.1 Areas presented to participants.....	4		
2.2 Areas identified by participants	4		
2.3 Areas of importance to Protecting and Sustaining the Environment..	4		
 Encouraging Conservation Planning.....	6		
3.1 Areas presented to participants	6		
3.2 Areas identified by participants	6		
3.3 Areas of importance to Encouraging Conservation Planning	6		
 Building Healthier Communities	8		
4.1 Areas presented to participants.....	8		
4.2 Areas identified by participants.....	8		
4.3 Areas of importance to Building Healthier Communities	8		
 Encouraging Sustainable Economic Development	10		
5.1 Areas presented to participants.....	10		
5.2 Areas identified by participants.....	10		
5.3 Areas of importance to Encouraging Sustainable Economic Development	10		
 Mixed Use.....	12		
6.1 Areas identified in the Draft Plan	12		
6.2 Areas identified by participants.....	12		
 Overlapping Goals	15		
7.1 Areas identified for multiple goals	15		

Chapter 1: Introduction

1.1 Context

The Nunavut Planning Commission (NPC) is preparing a land use plan to guide and direct resource use and development in the Nunavut Settlement Area (NSA). As part of its efforts, the NPC is facilitating discussions in each Nunavut community on land use and resource management issues. Information that is obtained from these discussions will be used to inform decisions regarding the further development of the Nunavut Land Use Plan (NLUP).

1.2 Purpose

This report presents information obtained during the NPC's visit to the community of Coral Harbour. The purpose of the report is to inform decisions regarding the further development of the NLUP, ensuring that the plan reflects the priorities and values of residents.

It is important to note that the information contained in the Community Report will be considered in conjunction with all other feedback when revising the DNLUP.

1.3 Methodology

Information was presented to and received from participants in Coral Harbour in accordance with the Nunavut Planning Commission's Community Engagement Strategy (Engagement Strategy). The Engagement Strategy provides for the following methods for presenting and receiving information;

- **Open house;** information contained in the Draft Nunavut Land Use Plan (DNLUP) was presented on 7 multi lingual large format poster boards. Participants were encouraged to review the posters, ask questions and provide feedback. Comments and questions were recorded by NPC staff and are contained in Appendix 1.
- **Elected Officials Meeting;** The NPC Chairperson and NPC staff met with senior and elected officials in the community. The development process for the DNLUP, its content and next steps were presented.

Comments and questions were recorded during the session and are contained in Appendix 2.

- **Public Workshop;** A formal presentation of the Draft Plan content was provided to participants, including a slide overview of its content. Following the presentation, questions and comments were received from participants. The questions, comments and responses are contained in Appendix 3.

A mapping session followed the presentation of the Draft Plan. The mapping session involved discussions regarding the topics presented in the DNLUP and encouraged participants to identify additional areas and issues important for inclusion in a NLUP. Information received during this session was recorded by NPC staff and is included in Appendix 4.

- **Wrap Up Session;** Staff was available to discuss the areas identified during the mapping and identify any additional issues or areas of interest. Information received during this session was recorded by NPC staff and is included in Appendix 5.

Areas that participants identified during mapping sessions as important to a particular goal have, in the majority of cases, been included in this report as they were recorded. In instances where participants identified an area that was better suited to another goal, the area has been reclassified to the more suitable goal and has been verified as appropriate to do so by the Community.

A follow-up meeting was held on April 15, 2014 to review a draft version of this report with the Hamlet Council, Hunters and Trappers Organization, and Community Lands and Resource Committee. A summary of this meeting is included in Appendix 6.

1.4 Public Awareness

The NPC raised public awareness regarding its visit to Coral Harbour in accordance with the Engagement Strategy.

The DNLUP and supporting materials were mailed to the Mayor and Council of Coral Harbour, and the Hunters and

Trappers Organization (HTO) in September 2012. In addition, letters of invitation were sent to the Coral Harbour Mayor and Council and HTO in advance of the NPC's visit to advise of the meetings and to encourage participation. Follow up phone calls were also made.

Public notice of the various events was provided in the following ways:

- **Nunatsiaq News and Nunavut News/North;** notice of community meetings were posted in both newspapers a minimum of 45 days in advance.
- **Co-op cable TV;** notice of community meetings was run a minimum of 45 days in advance for one week and run again for no less than 14 days before the meetings.
- **Community radio;** notices were read by the hosts and a live interview with the Commission Chairperson was conducted.
- **Community bulletin boards;** notices were posted on bulletin boards around the community 45 days and again 14 days in advance of the meetings.
- **Community mail drop;** one page flyers that announced the meetings and their purpose were delivered to the post office in each community for all mail boxes that accept unaddressed ad-mail.
- **nunavut.ca;** the schedule of community visits, the Draft Plan, and all supporting information was available on the Commission's website.

1.5 Community Population and Participation

Coral Harbour is a community of approximately 835 people (Statistics Canada. 2011 Census). It is located on the southern coast of Southampton Island. (see Figure 1).

The Commission visited the community on February 6-7, 2014. All events occurred as scheduled. The sessions were attended as follows;

- **Elected Officials Meeting;** the Mayor and members of the Hamlet Council and HTO attended the elected officials meeting.
- **Open house;** approximately 15 people attended the open house to review the Draft Plan.
- **Public Workshop;** approximately 40 people attended the presentation of the DNLUP and facilitated mapping sessions. Information was recorded in two separate mapping groups.
- **Wrap Up Session;** approximately 5 people attended the wrap up session.

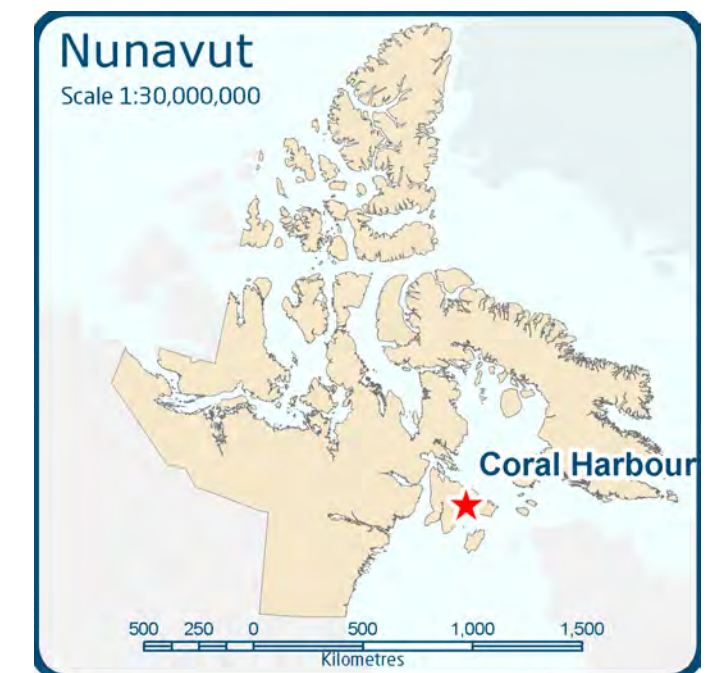


Figure 1. Location of Coral Harbour

Chapter 2: Protecting and Sustaining the Environment

Protecting and Sustaining the Environment was one of five topics presented to and discussed by participants during the Open House, Elected Officials Meeting, Public Workshop and Wrap up Session, collectively referred to in this document as information sharing and gathering sessions.

2.1 Areas presented to participants

During the information sharing and gathering sessions, participants were presented the following areas and issues as important to Protecting and Sustaining the Environment.

- Key bird habitat sites
- Caribou Habitat sites
- Atlantic Cod Lakes
- Cumulative Impacts
- Transboundary considerations
- Climate change

The importance of these issues and areas to Protecting and Sustaining the Environment was not disputed by participants during the information sharing and gathering sessions.

2.2 Areas identified by participants

Additional areas and issues were identified by participants as important to Protecting and Sustaining the Environment during the information sharing and gathering sessions. These additional areas are;

- Hunting and fishing areas
- Walrus habitat
- Polar bear habitat
- Bird habitat
- Whale habitat

- Marine mammal habitat
- Caribou habitat

2.3 Areas of importance to Protecting and Sustaining the Environment

Areas and issues discussed during the information sharing and gathering sessions as important to Protecting and Sustaining the Environment are illustrated on Map 1, including areas identified in the DNLUP and areas identified by the community. Scanned images of the maps on which community feedback was recorded can be found in Appendix 4.

Based on discussions with participants, the NPC understands that:

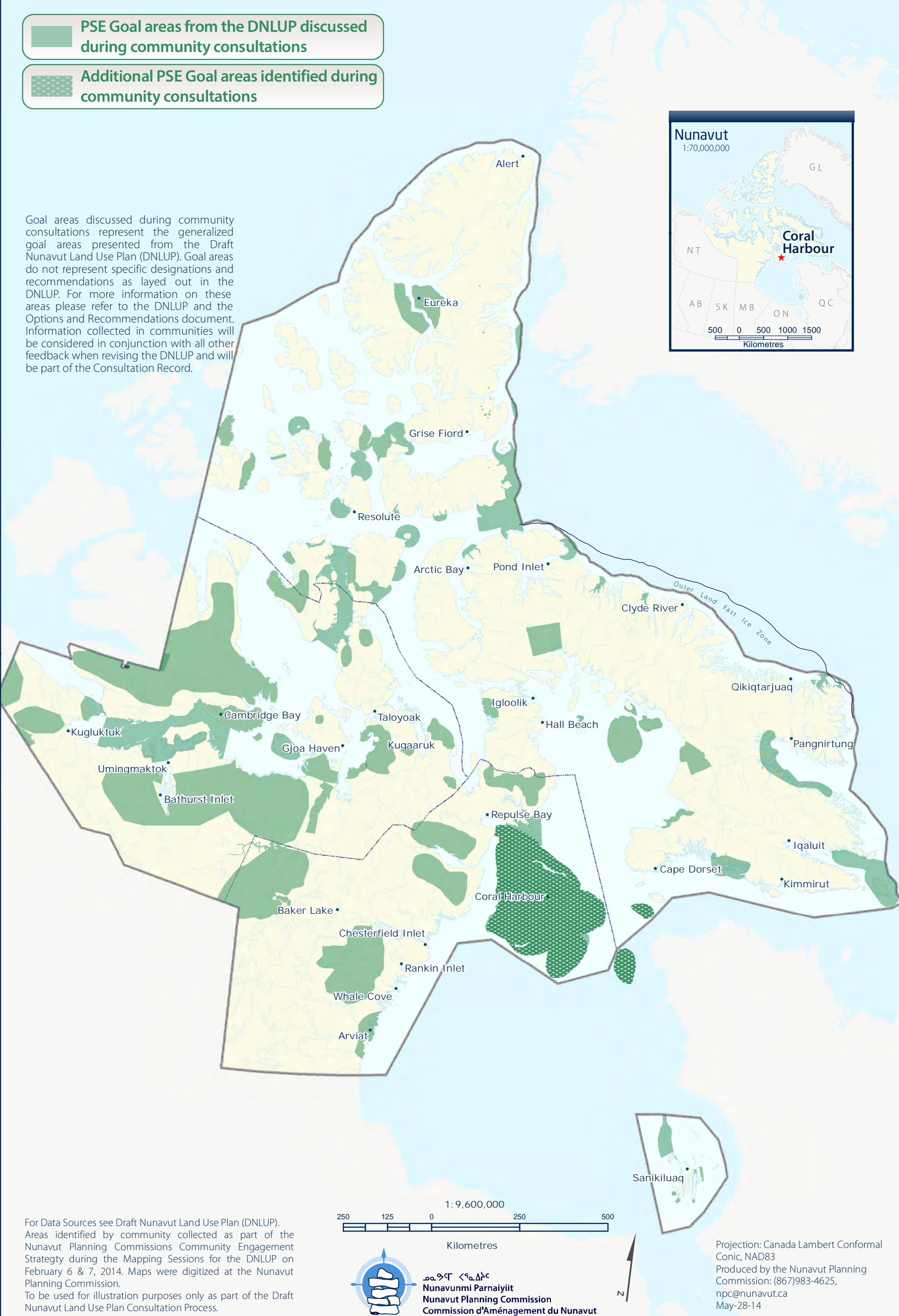
- The areas identified on Map 1 are considered by the Community to be important to Protecting and Sustaining the Environment.
- In these areas, the community would like the NLUP to encourage activities that support environmental protection and management needs, including wildlife conservation, protection and management.

This feedback will be considered in conjunction with all other feedback when revising the DNLUP.



- PSE Goal areas from the DNLUP discussed during community consultations
- Additional PSE Goal areas identified during community consultations

Goal areas discussed during community consultations represent the generalized goal areas presented from the Draft Nunavut Land Use Plan (DNLUP). Goal areas do not represent specific designations and recommendations as layed out in the DNLUP. For more information on these areas please refer to the DNLUP and the Options and Recommendations document. Information collected in communities will be considered in conjunction with all other feedback when revising the DNLUP and will be part of the Consultation Record.



For Data Sources see Draft Nunavut Land Use Plan (DNLUP). Areas identified by community collected as part of the Nunavut Planning Commissions Community Engagement Strategy during the Mapping Sessions for the DNLUP on February 6 & 7, 2014. Maps were digitized at the Nunavut Planning Commission. To be used for illustration purposes only as part of the Draft Nunavut Land Use Plan Consultation Process.

2501250250500

1: 9,600,000

Kilometres



ᓄᓇᓂᓄᓐ ᐸᓐᓇᐱᓐᓴᓐ

Nunavunmi Parnaiyiit

Nunavut Planning Commission

Commission d'Aménagement du Nunavut

N

Projection: Canada Lambert Conformal Conic, NAD83
Produced by the Nunavut Planning Commission: (867)983-4625, npc@nunavut.ca
May-28-14

Chapter 3: Encouraging Conservation Planning

Encouraging Conservation Planning was one of five topics presented to and discussed by the participants during the information sharing and gathering sessions.

3.1 Areas presented to participants

During the information sharing and gathering sessions, participants were presented the following areas and issues as important to Encouraging Conservation Planning;

- National Parks Awaiting Full Establishment
- Proposed National Parks
- National Marine Conservation Areas
- Thelon Wildlife Sanctuary
- Migratory Bird Sanctuaries
- National Wildlife Areas
- National Historic Sites
- Territorial Historic Sites
- Heritage Rivers

The importance of these issues and areas to Encouraging Conservation Planning was not disputed by participants during the information sharing and gathering sessions.

3.2 Areas identified by participants

Additional areas and issues were identified by participants as important to Encouraging Conservation Planning during the information sharing and gathering sessions. These additional areas are.

- Bird Habitat
- Historic sites
- Potential national park area

3.3 Areas of importance to Encouraging Conservation Planning

Areas and issues discussed during the information sharing and gathering sessions as important to Encouraging Conservation Planning are illustrated on Map 2, including areas identified in the DNLUP and areas identified by the community. Scanned images of the maps on which community feedback was recorded can be found in Appendix 4.

Based on discussions with participants, the NPC understands that:

- The areas identified on Map 2 are considered by the Community to be important to Encouraging Conservation Planning.
- In these areas, the community would like the NLUP to encourage activities that support environmental protection and management needs, including wildlife conservation, protection and management.

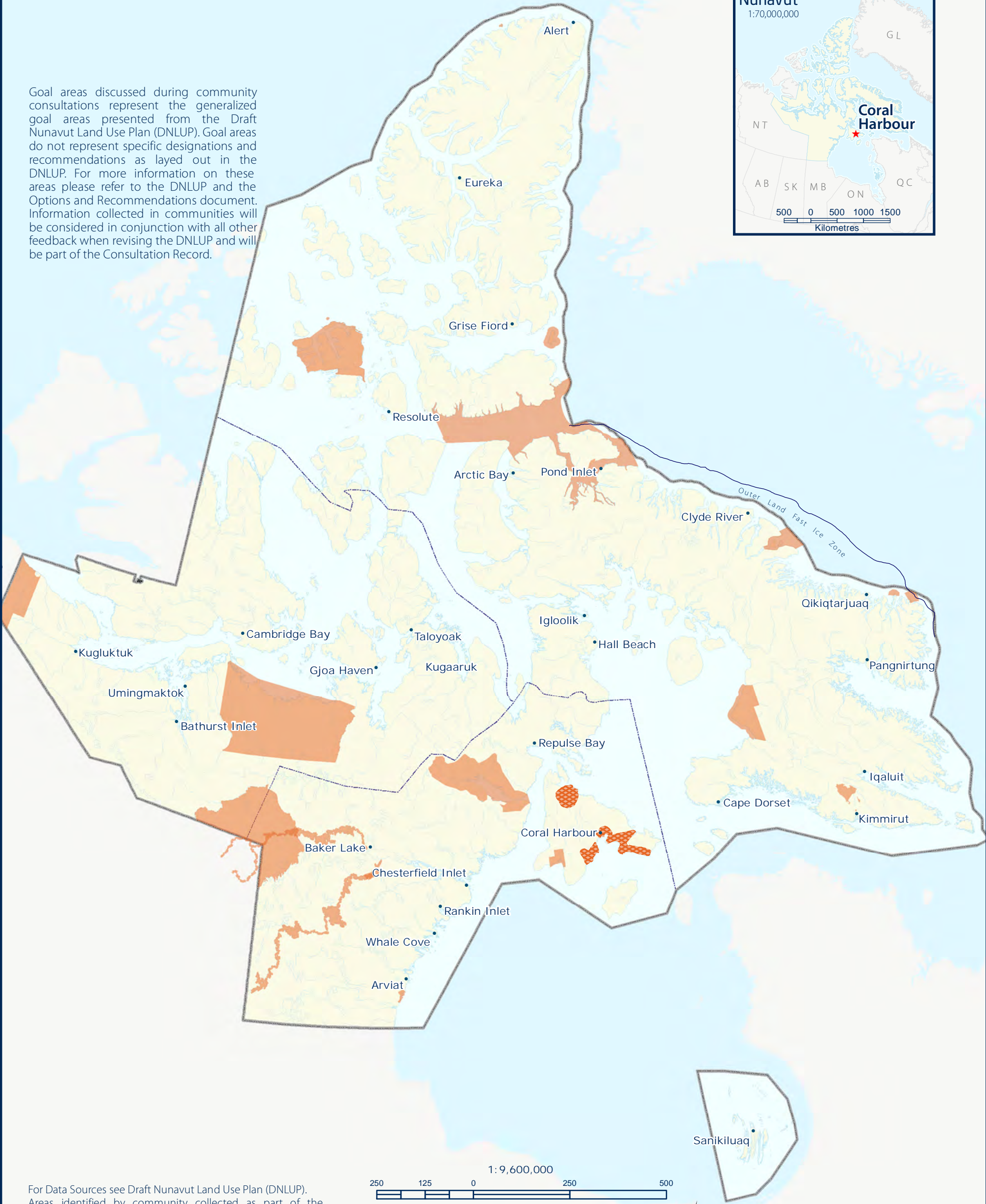
This feedback will be considered in conjunction with all other feedback when revising the DNLUP.



 ECP Goal areas from the DNLUP discussed during community consultations

 Additional ECP Goal areas identified during community consultations

Goal areas discussed during community consultations represent the generalized goal areas presented from the Draft Nunavut Land Use Plan (DNLUP). Goal areas do not represent specific designations and recommendations as layed out in the DNLUP. For more information on these areas please refer to the DNLUP and the Options and Recommendations document. Information collected in communities will be considered in conjunction with all other feedback when revising the DNLUP and will be part of the Consultation Record.



For Data Sources see Draft Nunavut Land Use Plan (DNLUP). Areas identified by community collected as part of the Nunavut Planning Commissions Community Engagement Strategy during the Mapping Sessions for the DNLUP on February 6 & 7, 2014. Maps were digitized at the Nunavut Planning Commission. To be used for illustration purposes only as part of the Draft Nunavut Land Use Plan Consultation Process.



ᑎᓄᓐᓂᓐ ᐃᓕᓐᓂᓐ
Nunavunmi Parnaiyiit
Nunavut Planning Commission
Commission d'Aménagement du Nunavut



Projection: Canada Lambert Conformal Conic, NAD83
Produced by the Nunavut Planning Commission: (867)983-4625, npc@nunavut.ca
May-28-14

Building Healthier Communities was one of five topics presented to and discussed by the participants during the information sharing and gathering sessions.

4.1 Areas presented to participants

During the information sharing and gathering sessions, participants were presented the following areas and issues as important to Building Healthier Communities;

- Areas of Community Interest
- Community Land Use
- Transportation Infrastructure
- Unincorporated Communities
- Alternative Energy Sources
- Community drinking water supplies
- Land remediation
- Northern Contaminated Sites Program
- Aerodromes
- Canadian Forces Station
- Northern Warning System sites

The importance of these issues and areas to Building Healthier Communities was not disputed by participants.

4.2 Areas identified by participants

Additional areas and issues were identified by participants as important to contributing to the goal of Building Healthier Communities during the information sharing and gathering sessions. These additional areas are;

- Fishing and hunting areas

- Drinking water
- Caribou areas
- Contaminated sites
- Culturally significant areas

4.3 Areas of importance to Building Healthier Communities

Areas and issues discussed during the information sharing and gathering sessions as important to Building Healthier Communities are illustrated on Map 3, including areas identified in the DNLUP and areas identified by the community. Scanned images of the maps on which community feedback was recorded can be found in Appendix 4.

Based on discussions with participants, the NPC understands that:

- The areas identified on Map 3 are considered by the Community to be important to Building Healthier Communities.
- In these areas, the community would like the NLUP to encourage activities that support community needs and cultural priorities.

This feedback will be considered in conjunction with all other feedback when revising the DNLUP.



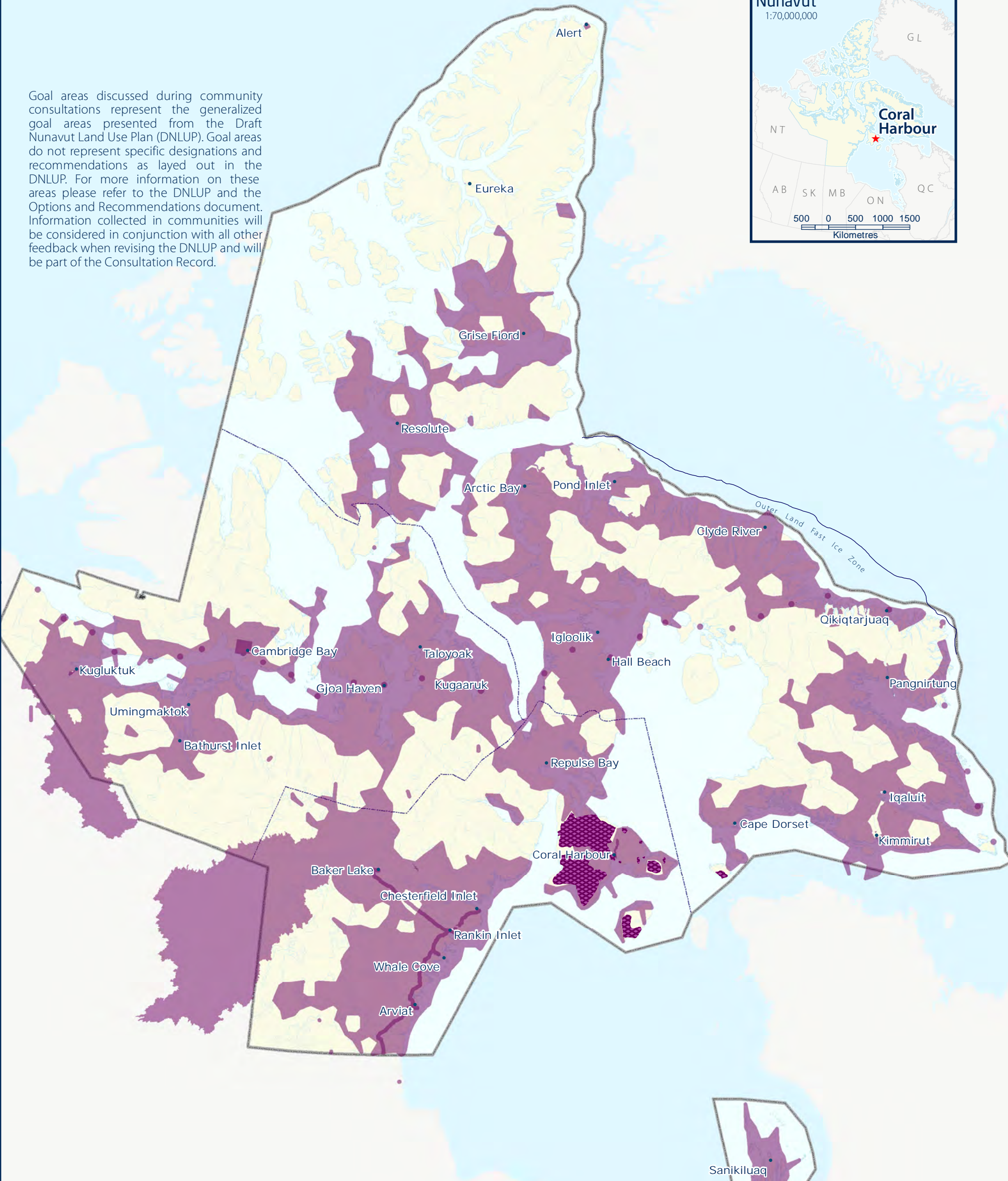


BHC Goal areas from the DNLUP discussed during community consultations



Additional BHC Goal areas identified during community consultations

Goal areas discussed during community consultations represent the generalized goal areas presented from the Draft Nunavut Land Use Plan (DNLUP). Goal areas do not represent specific designations and recommendations as layed out in the DNLUP. For more information on these areas please refer to the DNLUP and the Options and Recommendations document. Information collected in communities will be considered in conjunction with all other feedback when revising the DNLUP and will be part of the Consultation Record.



For Data Sources see Draft Nunavut Land Use Plan (DNLUP). Areas identified by community collected as part of the Nunavut Planning Commissions Community Engagement Strategy during the Mapping Sessions for the DNLUP on February 6 & 7, 2014. Maps were digitized at the Nunavut Planning Commission. To be used for illustration purposes only as part of the Draft Nunavut Land Use Plan Consultation Process.



Nunavunmi Parnaiyiit
Nunavut Planning Commission
Commission d'Aménagement du Nunavut



Projection: Canada Lambert Conformal Conic, NAD83
Produced by the Nunavut Planning Commission: (867)983-4625, npc@nunavut.ca
May-28-14

Chapter 5: Encouraging Sustainable Economic Development

Encouraging Sustainable Economic Development was one of five topics presented to and discussed by the participants during the information sharing and gathering sessions.

5.1 Areas presented to participants

During the information sharing and gathering sessions, participants were presented with the following areas important to Encouraging Sustainable Economic Development;

- Mineral Exploration and Production
- Oil and Gas Exploration
- Commercial Fisheries

The importance of these issues and areas to Encouraging Sustainable Economic Development was not disputed by participants during the information sharing and gathering sessions.

5.2 Areas identified by participants

Additional areas and issues were identified by participants as important to Encouraging Sustainable Economic Development during the information sharing and gathering sessions. The additional areas identified are;

- Commercial fisheries
- Commercial caribou harvest
- Sports hunting
- Sightseeing and tourism potential

5.3 Areas of importance to Encouraging Sustainable Economic Development

Areas and issues discussed during the information sharing and gathering sessions as important to Encouraging Sustainable

Economic Development are illustrated on Map 4, including areas identified in the DNLUP and areas identified by the community. Scanned images of the maps on which community feedback was recorded can be found in Appendix 4.

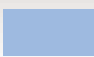

Based on discussions with participants, the NPC understands that:

- The areas identified on Map 4 are considered by the Community to be important to Encouraging Sustainable Economic Development.
- In these areas, the community would like the NLUP to encourage activities that support economic opportunities and needs.

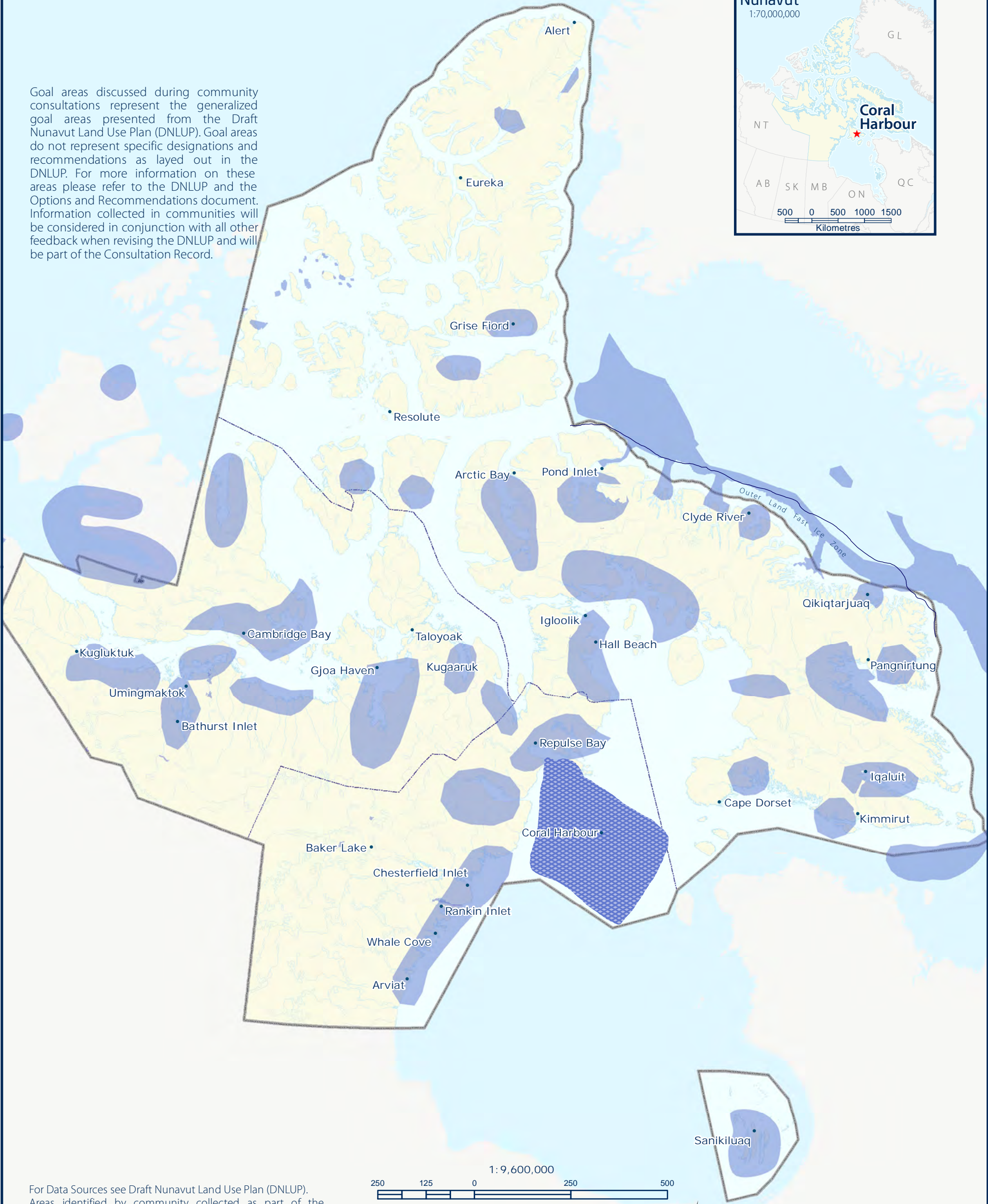
This feedback will be considered in conjunction with all other feedback when revising the DNLUP.



ENCOURAGING SUSTAINABLE ECONOMIC DEVELOPMENT (ESED) CORAL HARBOUR • MAP 4

-  ESED Goal areas from the DNLUP discussed during community consultations
-  Additional ESED Goal areas identified during community consultations

Goal areas discussed during community consultations represent the generalized goal areas presented from the Draft Nunavut Land Use Plan (DNLUP). Goal areas do not represent specific designations and recommendations as layed out in the DNLUP. For more information on these areas please refer to the DNLUP and the Options and Recommendations document. Information collected in communities will be considered in conjunction with all other feedback when revising the DNLUP and will be part of the Consultation Record.



For Data Sources see Draft Nunavut Land Use Plan (DNLUP). Areas identified by community collected as part of the Nunavut Planning Commissions Community Engagement Strategy during the Mapping Sessions for the DNLUP on February 6 & 7, 2014. Maps were digitized at the Nunavut Planning Commission. To be used for illustration purposes only as part of the Draft Nunavut Land Use Plan Consultation Process.



Projection: Canada Lambert Conformal Conic, NAD83
Produced by the Nunavut Planning Commission: (867)983-4625, npc@nunavut.ca
May-28-14

6.1 Areas identified in the Draft Plan

The DNLUP identifies areas important for a variety of uses. These areas were presented to participants during the workshop as Mixed Use Areas. These areas, as they occur around the community, are illustrated on Map 5.

6.2 Areas identified by participants

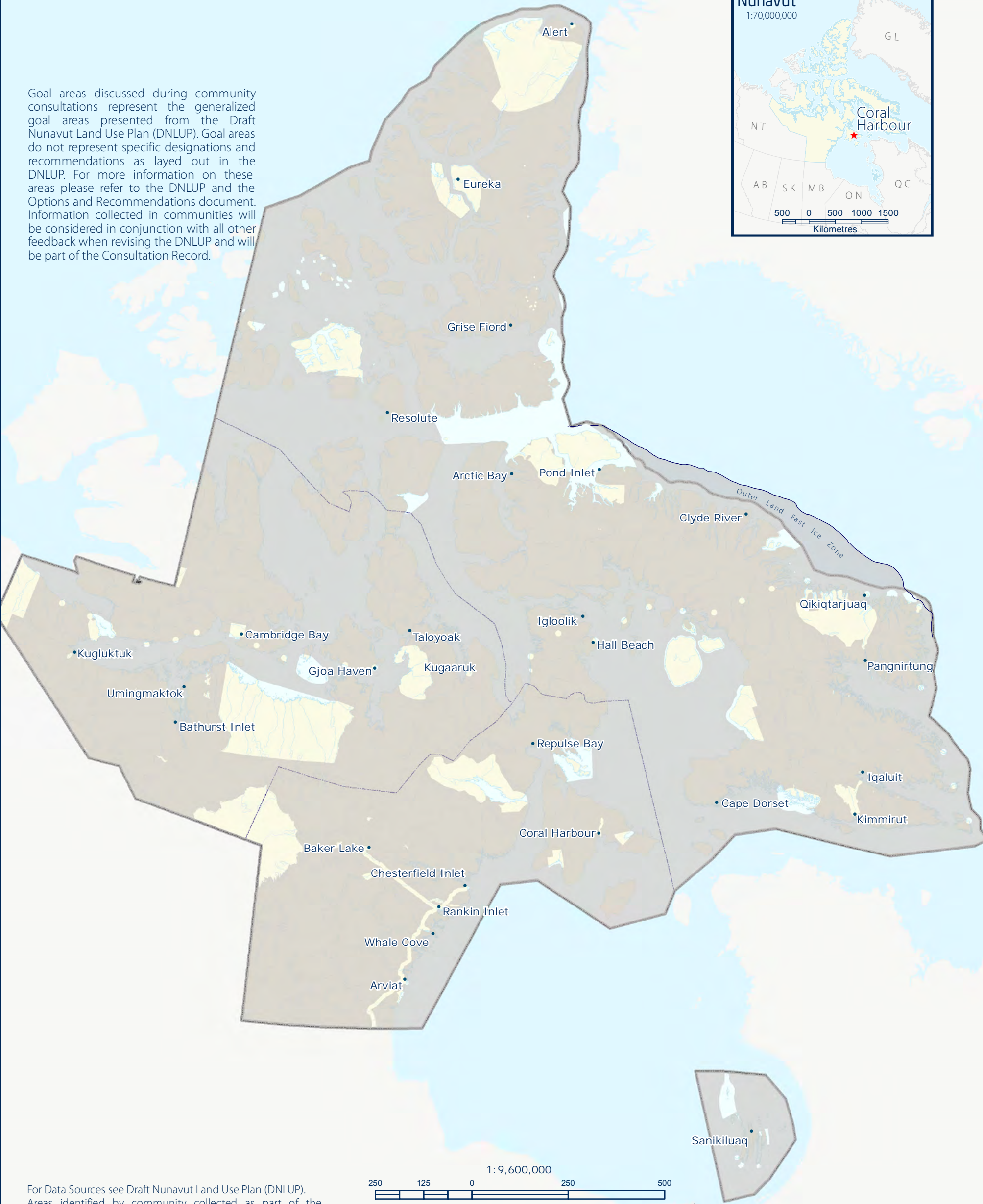
No additional areas were identified as Mixed Use by participants. However, some areas identified as Mixed Use in the DNLUP were considered by participants to require additional protection because of their particular qualities. These areas and the goals they are important for are identified on Map 6.





MU Goal areas from DNLUP discussed during community consultations

Goal areas discussed during community consultations represent the generalized goal areas presented from the Draft Nunavut Land Use Plan (DNLUP). Goal areas do not represent specific designations and recommendations as layed out in the DNLUP. For more information on these areas please refer to the DNLUP and the Options and Recommendations document. Information collected in communities will be considered in conjunction with all other feedback when revising the DNLUP and will be part of the Consultation Record.



For Data Sources see Draft Nunavut Land Use Plan (DNLUP). Areas identified by community collected as part of the Nunavut Planning Commissions Community Engagement Strategy during the Mapping Sessions for the DNLUP on February 6 & 7, 2014. Maps were digitized at the Nunavut Planning Commission. To be used for illustration purposes only as part of the Draft Nunavut Land Use Plan Consultation Process.



ᓄᓇᓂᓄᓐ ᐸᓐᓇᓂᓄᓐ
Nunavunmi Parnaiyiit
Nunavut Planning Commission
Commission d'Aménagement du Nunavut



Projection: Canada Lambert Conformal Conic, NAD83
Produced by the Nunavut Planning Commission: (867)983-4625, npc@nunavut.ca
Wednesday, April 02, 2014

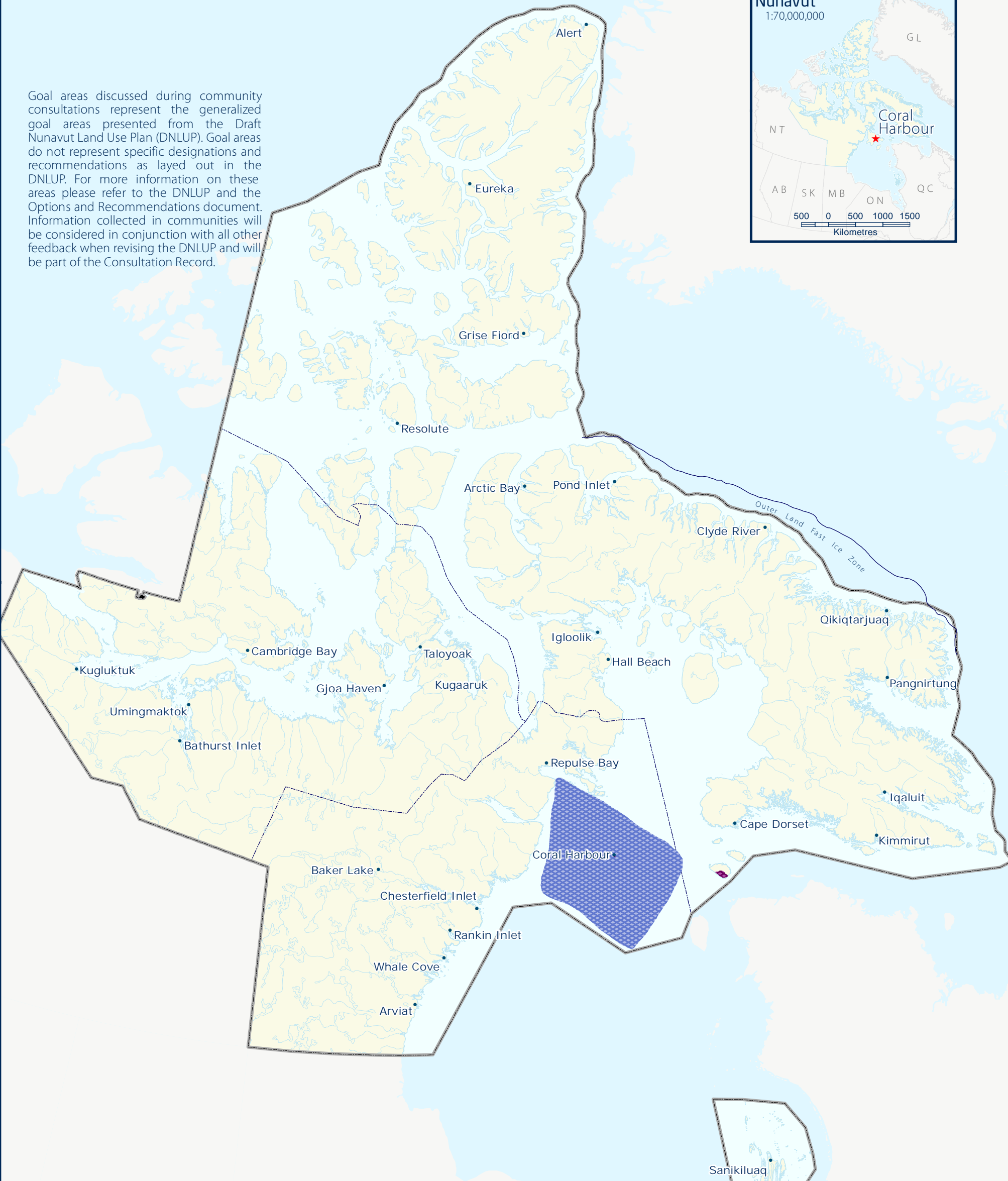


Additional BHC Goal areas identified during community consultations



Additional ESED Goal areas identified during community consultations

Goal areas discussed during community consultations represent the generalized goal areas presented from the Draft Nunavut Land Use Plan (DNLUP). Goal areas do not represent specific designations and recommendations as layed out in the DNLUP. For more information on these areas please refer to the DNLUP and the Options and Recommendations document. Information collected in communities will be considered in conjunction with all other feedback when revising the DNLUP and will be part of the Consultation Record.



For Data Sources see Draft Nunavut Land Use Plan (DNLUP). Areas identified by community collected as part of the Nunavut Planning Commissions Community Engagement Strategy during the Mapping Sessions for the DNLUP on February 5 & 6, 2014. Maps were digitized at the Nunavut Planning Commission. To be used for illustration purposes only as part of the Draft Nunavut Land Use Plan Consultation Process.



Nunavunmi Parnaiyiit
Nunavut Planning Commission
Commission d'Aménagement du Nunavut



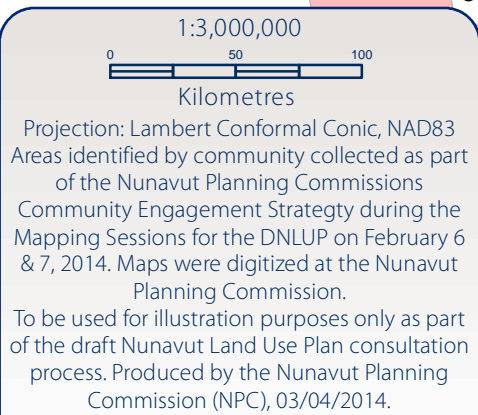
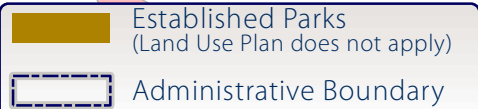
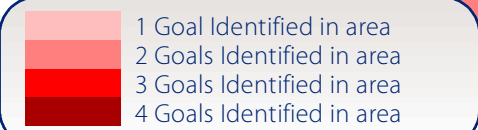
Projection: Canada Lambert Conformal Conic, NAD83
Produced by the Nunavut Planning Commission: (867)983-4625, npc@nunavut.ca
Wednesday, April 02, 2014

7.1 Areas identified for multiple goals

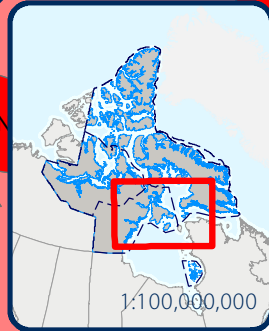
All areas discussed with the community as important for a particular goal are shown on Map 7. In some instances, areas have been identified as important for multiple goals. These areas, and the specific goals they are important to, are also shown on Map 7. In these areas, the NPC will take all of the identified goals and all other feedback into consideration when revising the DNLUP.



Coral Harbour • Map 7
Overlapping Goal Areas



Label	Goals in Area
A	PSE
B	ECP
C	BHC
D	ESED
E	PSE, ECP
F	BHC, ECP
G	BHC, PSE
H	ESED, ECP
I	ESED, PSE
K	BHC, ESED
L	BHC, PSE, ECP
M	BHC, ESED, ECP
N	BHC, ESED, PSE
O	ESED, PSE, ECP
P	All Goals (BHC, ESED, PSE, ECP)



Repulse Bay

Cape Dorset

Coral Harbour

Baker Lake

Chesterfield Inlet

Rankin Inlet

Whale Cove

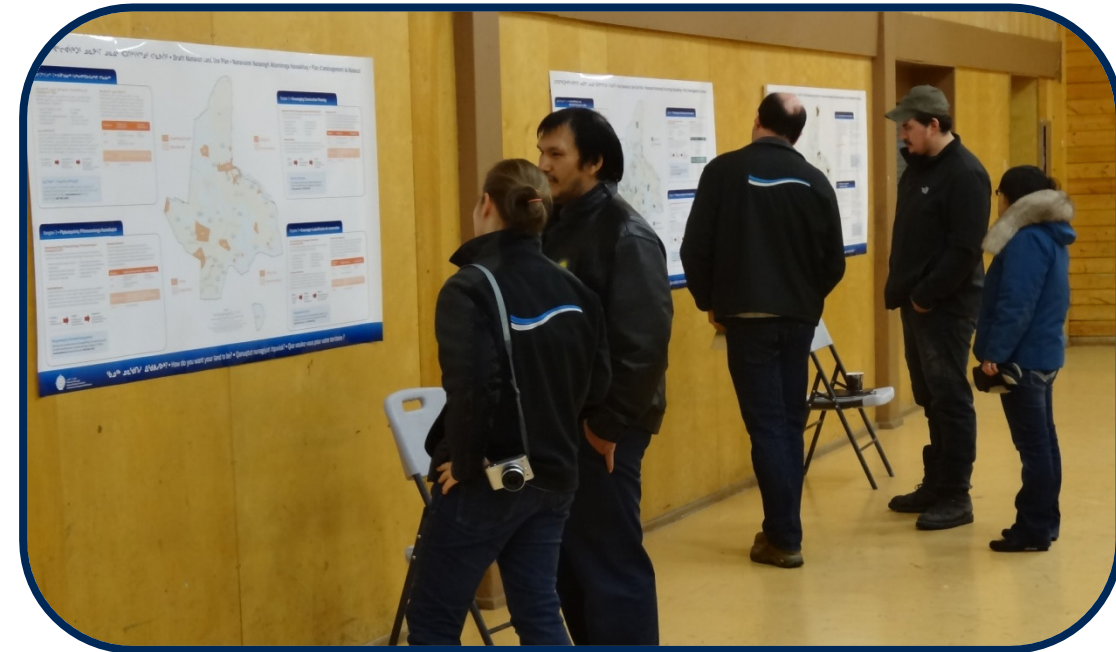
Arviat

Appendix 1: Open House

During the open house, participants raised the following issues:

- Walrus Island is a very important area
- Geese are now staying just east of town
- On SE tip of island. I went with my brother and found a tremendous rock that was Tunnuujaak - colour of Tuktu fat. It looked like a glass figure. When we went back to it, the rock wasn't there anymore but there was an indentation on the ground where it had been. I am thinking it was a diamond. It was see-through. Also there are lots of interesting rocks and soapstone in that area. Also found a rock that was small but could not lift it. Very dense and heavy.
- Just west of Coral Harbour, can drive to it in truck. 16 Mile Brook, they found rocks that burn when you light them. I mentioned it to an exploration group. I received money for telling them.
- On NE edge of island, explorers found something and keep going back every year.
- In Duke of York Bay, there is an area that looks like it is glass covered, found on top of rocks near river.
- Tujauq - I was born there on island at the mouth of Frobisher Bay on July 1st, 1931. Put on ship and moved to Tudjaak Island. I was there during World War 2. During the big war two ships, American and German submarine was sunk by the American ship right near the island. No phones back then. Telegraph. On southern tip of island (inside the Makhivik area). It was foggy, may have only shot at it. I was then shipped to Coral Harbour in September 1944. In first year at Native Point for first winter. Already were people here when we moved here. It was recommended to move to Native Point because it is easier to find food. Then we moved to the SE edge of island, Navilik. There was no money so we traded furs to the Hudsons Bay Company for food. This was my

whole family with cousins, my grandparents were still alive at that time.



Appendix 2: Elected Officials Meeting

The elected officials meeting was attended by the Mayor and members of the Hamlet Council and HTO. During the meeting, participants raised the following issues:

- Birds are moving to new areas (from Migratory Bird Sanctuaries) because of climate change.



Appendix 3: Questions and Answers

During the community workshop, there was a question and answer period, which included a discussion of the following topics:

- Family background - we moved to Southampton Island from Tudjuak, Resolution Island. Not many of us anymore. Any questions about our move I don't mind anyone asking about it.
 - The Commission answered that during the mapping session you can tell us about the Islands that are important to you and how you use the land.
- We are not many here in Nunavut. When Nunavut was just starting, we were asked questions of what we wanted for Nunavut and I have never forgotten about them. Regarding gun bylaw, tried to have gun rights taken away, for example. Resources need to be set aside for fishing and shipping to make money for the people of Nunavut. There is money to be made in shipping. People of Coral Harbour are interested in resources for cod, clams, mussels. NPC should plan for shipping these resources. Would like to see money for Coral Harbour for shipping and/or fishing. Numerous resources and very few people have income.
 - The commission answered that these comments can also be mentioned during mapping - any resources, income, or protection. We will write down what you say and it will be important to us because you know your land.
- I have understood why NPC is here. Will comments be written down? Coats Island was looked at before, but it has not started. When NLCA started, it was supposed to be left alone for the future and taken care of. We went through important areas. Also with Ukkusiksalik National Park. We stated these things before. Are they going to be reviewed carefully this time?
 - The Commission answered that important areas should be identified during the mapping session. Everything is recorded and will be verified.
- There are no young people here at all. They are our future leaders. Maybe coordinate with high schools, so the younger generation understands.
 - The Commission answered that the meetings are for everyone, and will be visiting the high school in the morning. Have had some students come to open houses, as well.
- Salluit is receiving royalties for resources. There should be royalties in the communities. Are we too far from Baker Lake?
 - The Commission answered that the NPC is not mandated to address these issues, and is here to talk about the draft land use plan. It would be best to address NTI with this issue. Also, NTI and Makivik have different agreements.
- The rivers that char use are important to us and I don't want development on them or near them. The rivers flowing to the sea are their highways. Lakes that have fish are important to me, and I don't want development on or near them. For example mineral exploration or gas. Other wildlife, such as polar bear are in their dens through winter. No exploration in denning areas. Walrus use haul outs in summer. No development near it. These are my concerns. They are very important to me. Fish are a food source. Although there are many fishing areas, I am concerned so I am speaking out.
 - The Commission requested that these concerns also be stated during the mapping session.



Appendix 4: Community Workshop Scanned Maps

Two groups completed the mapping session to identify important areas. This Appendix contains the maps that were used by participants to identify areas that are important to the following land use planning goals:

- Protecting and Sustaining the Environment
- Encouraging Conservation Planning
- Building Healthier Communities
- Encouraging Sustainable Economic Development
- Mixed Use

Also included on each map is a reference table that includes the specific values that were identified for the area.

Note: The documented comments for Group 1 were not verified with an audio recording.

During the mapping portion of the community workshop, the following concerns were raised that did not apply to a specific area that was identified on the maps:

- Want PSE areas protected
- Agree with Use and Occupancy Mapping on BHC map
- Support commercial fisheries
- There is a lot of fox trapping all over Southampton Island
- Road to Duke of York Bay if completed will be used for tourism
- Would like to see tariffs imposed on shipping companies to support hunters.
- Use all water for drinking

Coral Harbour - Group 1 Results



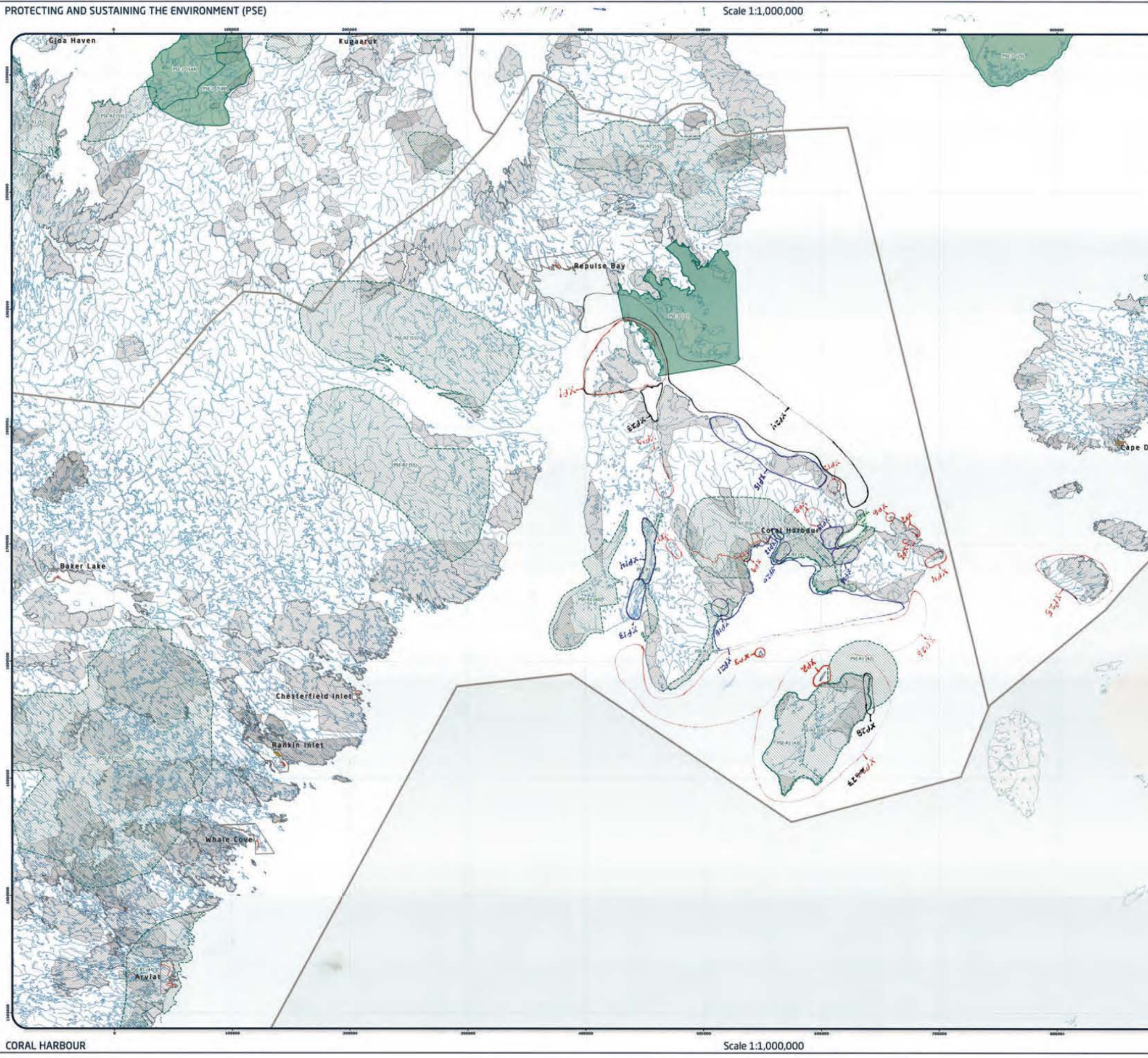
Designations	Permitted Uses	Prohibited Uses
Wetland of High Quality	Scientific Research, Research	All Other Uses
Wetland of Moderate Quality	Scientific Research, Research	
Wetland of Low Quality	Scientific Research, Research, Marine Infrastructure, Marine Communications and Electrical Cables	

USACE Wetland Recommendation Table

Reference Table for Recommendations

Wetland Type	Activity	Recommendation
Wetland of High Quality	Project Proposed Located in a Few Feet Buffer	Restrict Use
	Project Proposed Located in a Few Feet Buffer	Restrict Use
	Project Proposed Located in a Few Feet Buffer	Restrict Use
Wetland of Moderate Quality	Project Proposed Located in a Few Feet Buffer	Restrict Use
	Project Proposed Located in a Few Feet Buffer	Restrict Use
	Project Proposed Located in a Few Feet Buffer	Restrict Use
Wetland of Low Quality	Project Proposed Located in a Few Feet Buffer	Restrict Use
	Project Proposed Located in a Few Feet Buffer	Restrict Use
	Project Proposed Located in a Few Feet Buffer	Restrict Use

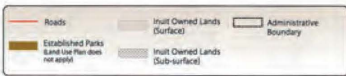
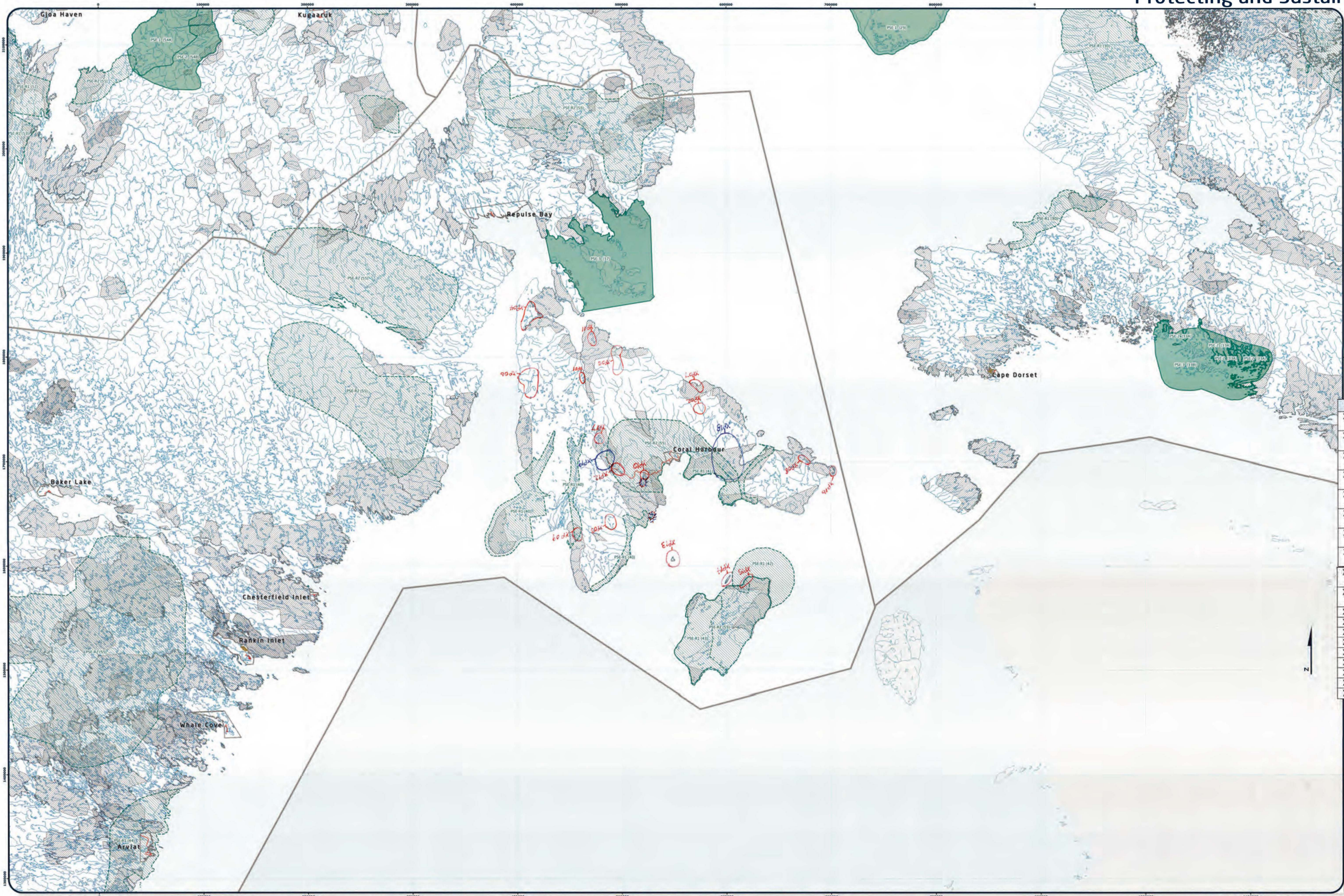
Code	Comments
XP01	Duke of York Bay. Protect hunting and fishing area. That is where road is going so leave the road alone.
XP02	Walrus haulout, good hunting, want protection
XP03	Walrus haulout, good hunting, want protection
XP04	Quite a few walrus in that area as well. It is where they calve and should be protected.
XP05	Many fish - Arctic Char. Needs protection.
XP06	Walrus calving area
XP07	Walrus calving area
XP08	River in here - many fish there - Arctic Char. Called Killaq.
XP09	Many Arctic Char along river
XP10	Many Arctic Char
XP11	Many Arctic Char
XP12	Many Arctic Char, seals, mammals
XP13	Many fish, mainly Arctic Char
XP14	Arctic Char
XP15	Many Polar Bears in winter time - Denning area
XP16	Nesting grounds - used to be further away - coming closer each year. Mainly Canada Geese, Snow Geese
XP17	Nesting area for geese
XP18	Nesting area for geese
XP19	Nesting area for geese
XP20	Fish habitat
XP21	Lots of Beluga Whales - whole area, all marine mammals, seals.
XP22	Beluga shedding - peeling - also seals in area
XP23	Marine mammals, seals, beluga
XP24	Narwhales, Beluga, Bowhead Whales
XP25	Nottingham Island, seals, Beluga, Narwhales. Route for geese.
XP26	Narwhales, Beluga, Whales
XP27	All mammals, Caribou, Polar Bear, Seals, Beluga, Walrus, Shrimp, Char
XP28	Lots of Murres. Scientists go there every summer.

[illegible]

Coral Harbour - Group 2 Results
Protecting and Sustaining the Environment

PROTECTING AND SUSTAINING THE ENVIRONMENT (PSE)

Scale 1:1,000,000



Designations	Permitted Uses	Prohibited Uses
PSE 1	Tourism, Recreation, Research	All Other Uses
PSE 2	Tourism, Recreation, Research	
PSE 3	Tourism, Recreation/Research, Marine Infrastructure, Marine Communications and Electrical Cables	

Code	Comments
XP01	Arctic char and lake trout fishing area. Would like it to be protected.
XP02	Arctic char and lake trout fishing area. Not commercial. Would like it to be protected.
XP03	Arctic char and lake trout fishing area. Not commercial. Would like it to be protected.
XP04	Arctic char and lake trout fishing area. Not commercial. Would like it to be protected.
XP05	Arctic char and lake trout fishing area. Not commercial. Would like it to be protected.
XP06	Arctic char fishing area. Not commercial. Would like it to be protected.
XP07	Arctic char fishing area. Not commercial. Would like it to be protected.
XP08	Arctic char fishing area. Not commercial. Would like it to be protected.
XP09	Arctic char fishing area. Not commercial. Would like it to be protected.
XP10	Arctic char fishing area. Not commercial. Would like it to be protected.
XP11	Arctic char
XP12	Arctic char
XP13	Marine mammals. Want protected.
XP14	Marine mammals and caribou
XP15	marine mammals
XP16	marine mammals. Beluga breeding area.
XP17	Arctic char
XP18	caribou calving area
XP19	Caribou calving ground

Code	Comments
XP01	Arctic char and lake trout fishing area. Would like it to be protected.
XP02	Arctic char and lake trout fishing area. Not commercial. Would like it to be protected.
XP03	Arctic char and lake trout fishing area. Not commercial. Would like it to be protected.
XP04	Arctic char and lake trout fishing area. Not commercial. Would like it to be protected.
XP05	Arctic char and lake trout fishing area. Not commercial. Would like it to be protected.
XP06	Arctic char fishing area. Not commercial. Would like it to be protected.
XP07	Arctic char fishing area. Not commercial. Would like it to be protected.
XP08	Arctic char fishing area. Not commercial. Would like it to be protected.
XP09	Arctic char fishing area. Not commercial. Would like it to be protected.
XP10	Arctic char fishing area. Not commercial. Would like it to be protected.
XP11	Arctic char
XP12	Arctic char
XP13	Marine mammals. Want protected.
XP14	Marine mammals and caribou
XP15	marine mammals
XP16	marine mammals. Beluga breeding area.
XP17	Arctic char
XP18	caribou calving area
XP19	Caribou calving ground

Signature of Mayor: *Billie*



Coordinate System: EPSG 42304 LCC
Projection: Lambert Conformal Conic
Datum: North American 1983
False Easting: 0.0000
False Northing: 0.0000
Central Meridian: -95.0000
Standard Parallel 1: -49.0000
Standard Parallel 2: -77.0000
Latitude Of Origin: 49.0000
Units: Meter

MAP 1015
For Land Use Designations and Recommendations sources see draft Nunavut Land Use Plan and background material data source documents.
Hillshade created by utilizing SAGA method in Hillshade toolbox courtesy of ECR user forum. Water bodies created by merging all 1:250,000 MTB shapefiles in Nunavut, version 2.0, and selecting all waterbodies over 50 hectares in size. Land outside of Nunavut, courtesy of Geographic Information Systems Canada. Administrative boundaries consist of NRC draft regional boundaries, created to reflect Regional Inuit Association jurisdictions, combined with municipal boundaries, provided by Natural Resources Canada. Inuit Owned Lands courtesy of Nunavut Tunngavik Incorporated. Territorial parks from the Government of Nunavut, National Parks from Parks Canada. Data for areas within municipal boundaries obtained from Natural Resources Canada cadastral data. This map is to be used for reference purposes only by the NPC. Any further use of this map or data therein must be authorized by contacting the Nunavut Planning Commission at: (867) 788-4625 or email: nuplanning@nuc.nu.ca
Tuesday, January 14, 2024

CORAL HARBOUR

Scale 1:1,000,000

NPC Regional Map Series

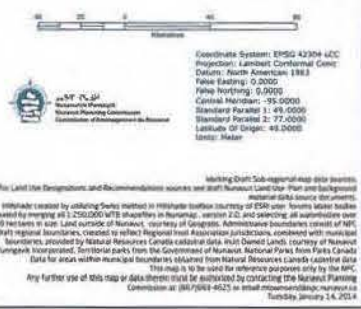
[illegible]

Code	Comments
XP01	Important for walrus for protection.
XP02	Very important for char (used every year for subsistence).
XP03	Duke of York Bay area. Fishing area, Caribou.
XP04	The whole thing is ours. Just leave us alone. Fish (char, cod), walrus, caribou, and everything we survive on. Seal, birds (geese), ugly fish, whale (grey, beluga), mussels, plankton, bowhead.
XP05	Right Whales calving area
XP06	Whale calving area
XP07	Narwhale and whale area also Beluga. We eat these.
XP08	Lots of geese. Nesting ground.
XP09	Nesting ground for geese.
XP10	Want this area to be protected with special management like Walrus Island.

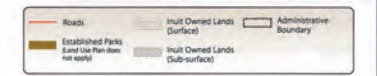
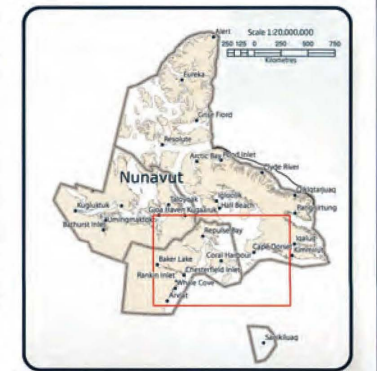
1. _____
 2. _____
 3. _____
 4. _____
 5. _____
 6. _____
 7. _____
 8. _____
 9. _____
 10. _____
 11. _____
 12. _____
 13. _____
 14. _____
 15. _____

Signature of Officer: _____


JUN 15 4

[illegible]

Coral Harbour - Group 1 Results



Designations	Permitted Uses	Prohibited Uses
PCU-1	Tourism, Recreation, Research	All Other Uses
PCU-2	Tourism, Recreation, Research	


 ICF Recommendation

Reference Table for Recommendations

Guideline Project Proponent should analyze and/or near a Heritage River should take into account the guidelines and criteria contained in the Heritage River's management plan.

Code	Comments
XC29	Used to go egg picking on dogsled
XC30	Lots of Snow Geese nest here. Used to go to bird sanctuary ECP-2(83), but now go here.
XC31	Swans, Geese, Ducks, all along this coast.

This is a blank sheet of white paper with horizontal blue ruling lines. The lines are evenly spaced and run across the width of the page. There is a vertical margin line on the left side, creating a narrow left margin. The top of the page has some faint, illegible markings that appear to be from a previous scan or document header.

Renewal Planning Commission Community Consultation Form Land Use Mapping Section	
Community	CH
Location	
Region	
Date	Feb 2 / 08
Community #	
Map #	2
Signatures of the Community signify its permission form to conduct mapping studies as requested.	
1.	16.
2.	17.
3.	18.
4.	19.
5.	20.
6.	21.
7.	22.
8.	23.
9.	24.
10.	25.
11.	26.
12.	27.
13.	28.
14.	29.
15.	30.
Signature of Mapper: 	




 الجمهورية التونسية
 Commission Nationale d'Aménagement
 Commission d'Équipement du Nord

Coordinate System: EPSG 42304 LCC
 Projection: Lambert Conformal Conic
 Datum: North American 1983
 False Easting: 0.0000
 False Northing: 0.0000
 Central Meridian: -95.0000
 Standard Parallel 1: 49.0000
 Standard Parallel 2: 77.0000
 Latitude Of Origin: 49.0000
 Units: Meter

Working Draft: This regional map data sources include National Land Use and background information and data source documents.

Habitat created by utilizing Swiss methods in hillside timber culture of eastern water bodies created by merging at 1:250,000 1/8th quarter in the form of a map of the National Land Use and background information and data source documents.

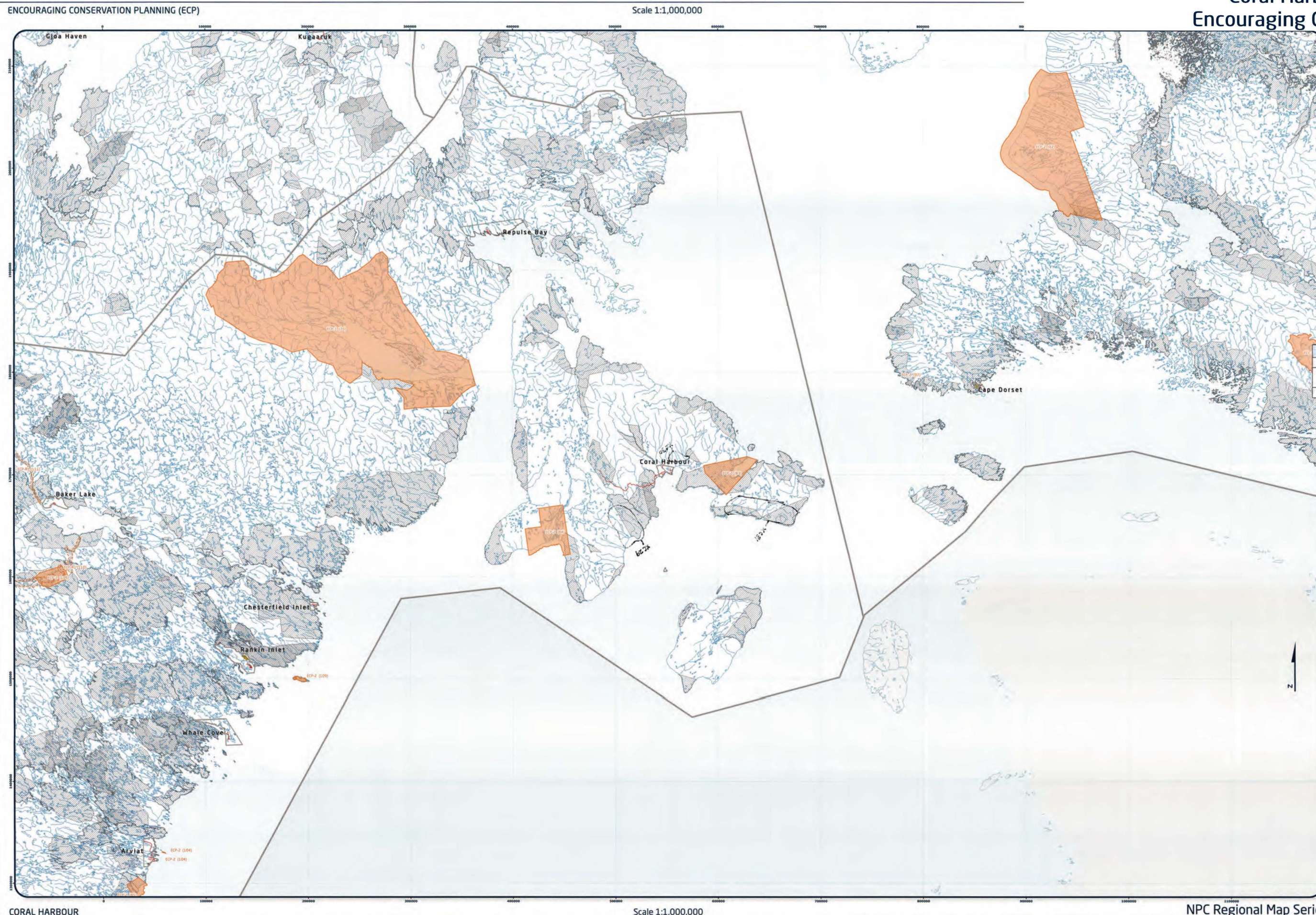
50 hectares in size. Land outside of National, Georgia. Administrative boundaries consist of NHC district regional boundaries, created to reflect Regional Association jurisdictions, combined with municipal boundaries, overlaid on National Resources Canada's National Land Use and background information and data source documents.

Tenneco Incorporated. Territorial parks from the Government of Nunavut. National Parks from Parks Canada.

Data for areas within municipal boundaries obtained from Natural Resources Canada's National Land Use and background information and data source documents.

Any further use of this map of data therein must be by contacting the Nunavut Planning Commission at: (867) 793-4625 or by email: nunavutplanning@mun.ca

Tuesday, January 24, 2012



ENCOURAGING CONSERVATION PLANNING (ECP)

Scale 1:1,000,000

[illegible]

Code	Comments
XC20	Nesting geese
XC21	Would like to extend Migratory Bird Sanctuary: ECP-2 (83)
XC22	Historic Site
XC23	Historic Site

This is a blank sheet of white paper with horizontal blue or grey ruling lines. The lines are evenly spaced and run across the width of the page. There is no handwriting or other markings on the paper.

Statistical Planning for Commission
Administrative/Operational Issues
LCRF Data Relating to Services

CONFIDENTIAL

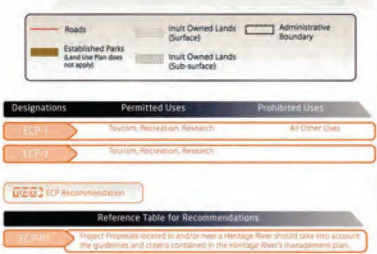
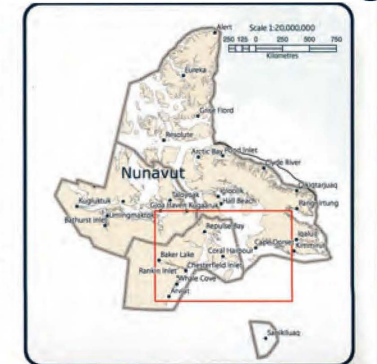
CONFIDENTIAL
Statistical Planning Commission
04-25-2008

Signature of Manager:
Phillips

[illegible]

Coral Harbour – Group 3 Results

Encouraging Conservation Planning



Code	Comments
XC11	Has heard it may be a national park.
XC12	Native Point has many historical sites.
XC13	Ruin Point, historic area.
XC14	SNAFU historic area (2000 army people located here and army facility). Airport a historic site.

Regional Planning Commission
Community Consultation Team
Land Use Mapping Section

Community: _____
 Location: _____
 Region: _____
 Date: _____
 Community POC: _____
 Map # _____

Signatures of the Community equity or permission
 form to conduct mapping session as informants.

1. _____	16. _____
2. _____	17. _____
3. _____	18. _____
4. _____	19. _____
5. _____	20. _____
6. _____	21. _____
7. _____	22. _____
8. _____	23. _____
9. _____	24. _____
10. _____	25. _____
11. _____	26. _____
12. _____	27. _____
13. _____	28. _____
14. _____	29. _____
15. _____	30. _____

Signature of Mapper: _____




 Coordinate System: EPSG 42304 LCC
 Projection: Lambert Conformal Conic
 Datum: North American 1983
 False Easting: 0.0000
 False Northing: 0.0000
 Central Meridian: -95.0000
 Standard Parallel 1: 49.0000
 Standard Parallel 2: 77.0000
 Latitude Of Origin: 49.0000

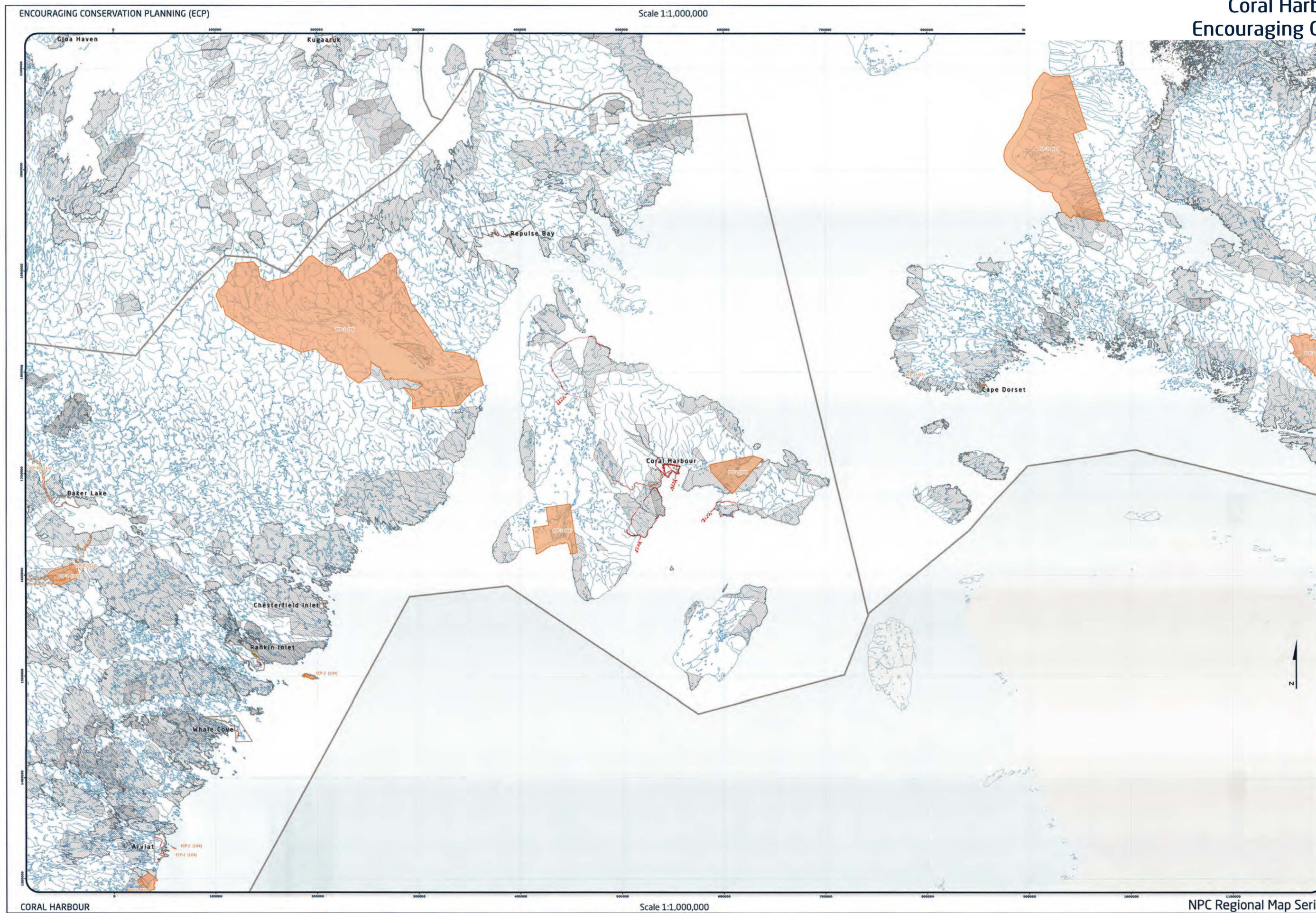
UNRES. Header

Working Draft: Sub-regional map data are available for the following areas:
For Land Use Designations and Recommendations sources see draft: Nunavut Land Use Plan and background material data source documents.

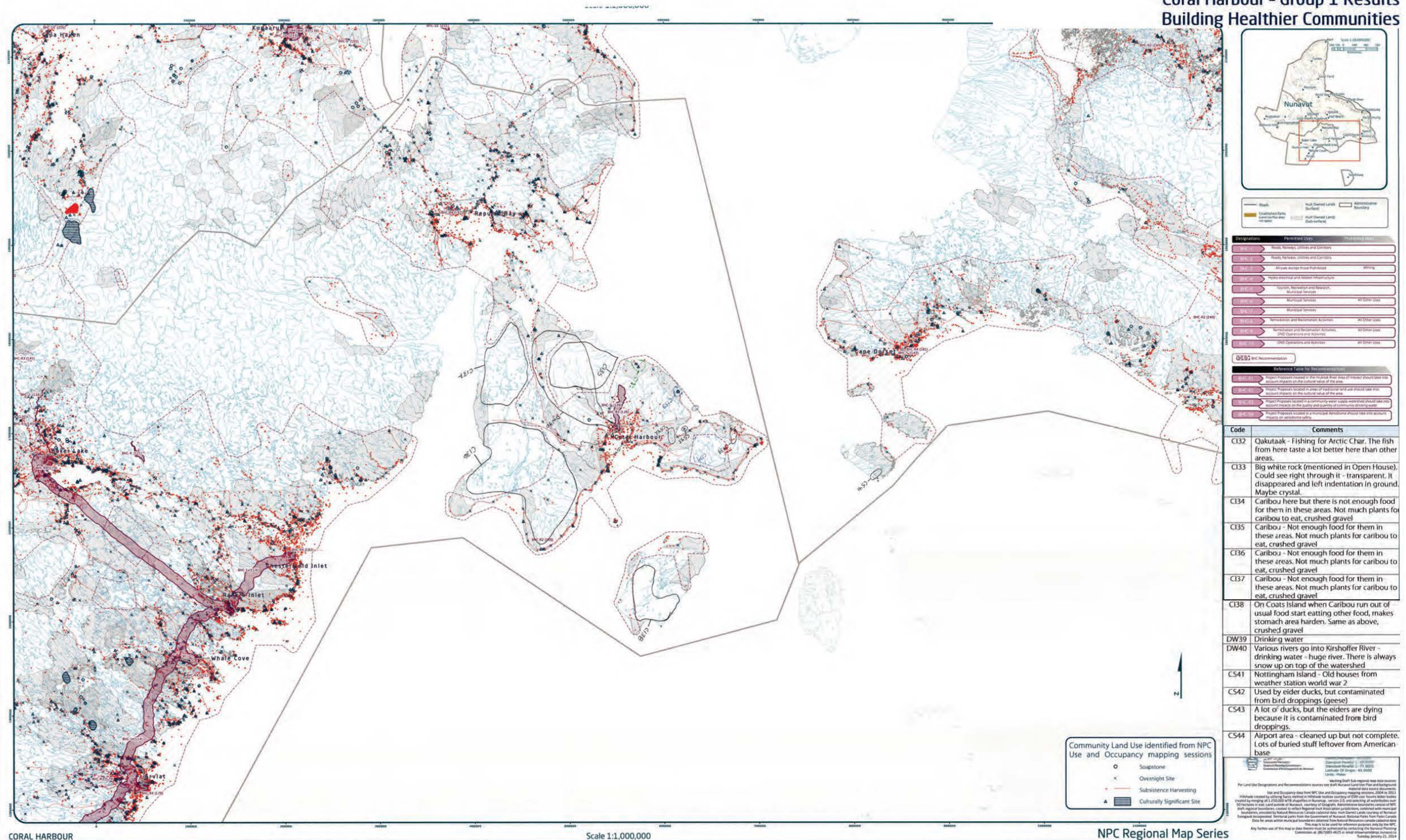
Hillsshade created by utilizing Swiss method to highlight topographic material data source documents.
Created by merging all 1:250,000 1:50,000 1:25,000 maps, version 2.0, and selecting all waterbodies over 10 hectares in size. Land outside of Nunavut, courtesy of Geographic Administrative boundaries courtesy of NRC
Regional boundaries, created to reflect Regional boundaries, courtesy of NRC
Municipal boundaries, provided by Land outside of Nunavut, courtesy of Geographic Administrative boundaries courtesy of NRC
Territorial parks provided by the Government of Nunavut, Nunavut Parks from Parks Canada
Data for areas within municipal boundaries obtained from Natural Resources Canada (regional data)

This map is to be used for reference purposes only by the NRC.
Any further use of this map or data therein must be authorized by contacting the Nunavut Planning Commission at (867)789-8452 or an email information@nunavut.ca

Tuesday, January 21, 2014



Coral Harbour - Group 1 Results Building Healthier Communities



Designations	Permitted Uses	Prohibited Uses
Residential	Residential, Commercial and Industrial	None
Industrial	Industrial, Commercial and Industrial	None
Commercial	Commercial, Industrial and Residential	None
Public Use	Public Use, Commercial and Industrial	None
Recreation	Recreation, Commercial and Industrial	None
Research	Research, Commercial and Industrial	None
Transportation	Transportation, Commercial and Industrial	None
Utilities	Utilities, Commercial and Industrial	None
Other	Other, Commercial and Industrial	None

Code	Comments
C132	Oakutaak - Fishing for Arctic Char. The fish from here taste a lot better here than other areas.
C133	Big white rock (mentioned in Open House). Could see right through it - transparent. It disappeared and left indentation in ground. Maybe crystal.
C134	Caribou here but there is not enough food for them in these areas. Not much plants for caribou to eat, crushed gravel
C135	Caribou - Not enough food for them in these areas. Not much plants for caribou to eat, crushed gravel
C136	Caribou - Not enough food for them in these areas. Not much plants for caribou to eat, crushed gravel
C137	Caribou - Not enough food for them in these areas. Not much plants for caribou to eat, crushed gravel
C138	On Coats Island when Caribou run out of usual food start eating other food, makes stomach area harden. Same as above, crushed gravel
DW39	Drinking water
DW40	Various rivers go into Kirshoffer River - drinking water - huge river. There is always snow up on top of the watershed
CS41	Nottingham Island - Old houses from weather station world war 2
CS42	Used by eider ducks, but contaminated from bird droppings (geese)
CS43	A lot of ducks, but the eiders are dying because it is contaminated from bird droppings.
CS44	Airport area - cleaned up but not complete. Lots of buried stuff leftover from American base

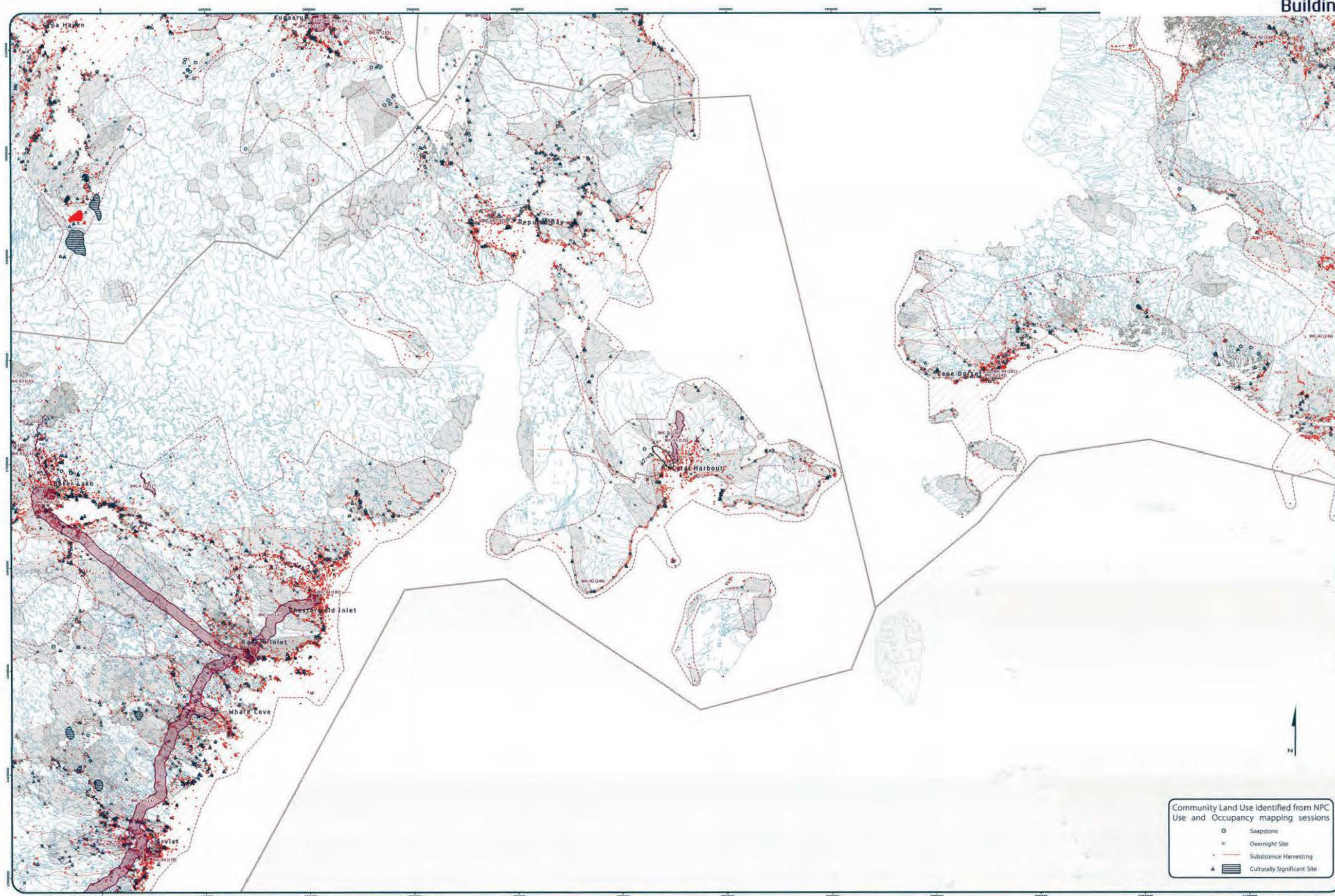
Scale 1:1,000,000

NPC Regional Map Series

For Land Use Designations and Recommendations: See NPC Land Use and Occupancy mapping sessions. Data is from 2014 to 2015. Data is from 2014 to 2015. Data is from 2014 to 2015.

For Land Use Designations and Recommendations: See NPC Land Use and Occupancy mapping sessions. Data is from 2014 to 2015. Data is from 2014 to 2015. Data is from 2014 to 2015.

For Land Use Designations and Recommendations: See NPC Land Use and Occupancy mapping sessions. Data is from 2014 to 2015. Data is from 2014 to 2015. Data is from 2014 to 2015.



Designations	Permitted Units	Prohibited Units
State	Roads, Railways, Utilities and Contacts	
Union	Roads, Railways, Utilities and Contacts	Mining
State	All other except those Prohibited	
State	Hydro, Nuclear and related infrastructure	
State	Transport, Navigation and Education, (Maritime Services)	
State	Multipurpose Services	All other uses
State	Multipurpose Services	
State	Navigation and Navigation Activities	All other uses
State	Transportation and Navigation Activities, (Land Operations and Activities)	All other uses
State	Land Operations and Activities	All other uses

Reference Table for Recommendations	
High	Project Promoters should in the financial layer of context should take into account impacts on the cultural value of the area.
Medium	Project Promoters should in the middle layer of a bottom-up view should have into account impacts on the cultural value of the area.
Low	Project Promoters located in a community wide supply watershed should take into account impacts on the quality and quantity of community drinking water.
Very Low	Project Promoters located in a Multiple Watersheds should take into account impacts on the sensitive value.

Code	Comments
DW24	Drinking water

[illegible]

CONFIDENTIAL
C6d5b7c. 4b5yC5b
Rural Planning Commission
1000 1st St. N.E.
Washington, D.C. 20002

Coordinates system: EPSG: 4326 GCS
Projection: Lambert Conformal Conic
Datum: North American 1983
False Easting: 0.0000
False Northing: 0.0000

[illegible]

MAP 3 of 5 Working Draft Sub-regional map data source:
For Land Use Designations and Recommendations sources see draft Natural Land Use Plan and Sub-regional
Map Data source: DNR
Use and Disposition (aka State WIC Use and Disposition) Worksheet, 2018 to 2021

Waterbodies created by joining Swiss national and Millbrook toolbox courtesy of ESR Inter-Forces Water bodies created by joining all 1,250,000 IRTI shapesfiles in Munscape, version 2.1, and selecting all waterbodies over 10 hectares in size. Land use data of Munster, courtesy of Geoparis. Administrative boundaries (covid) of NUTS 3rd regional boundaries, created to reflect Regional level Association Jurisdiction, combined with rivers of

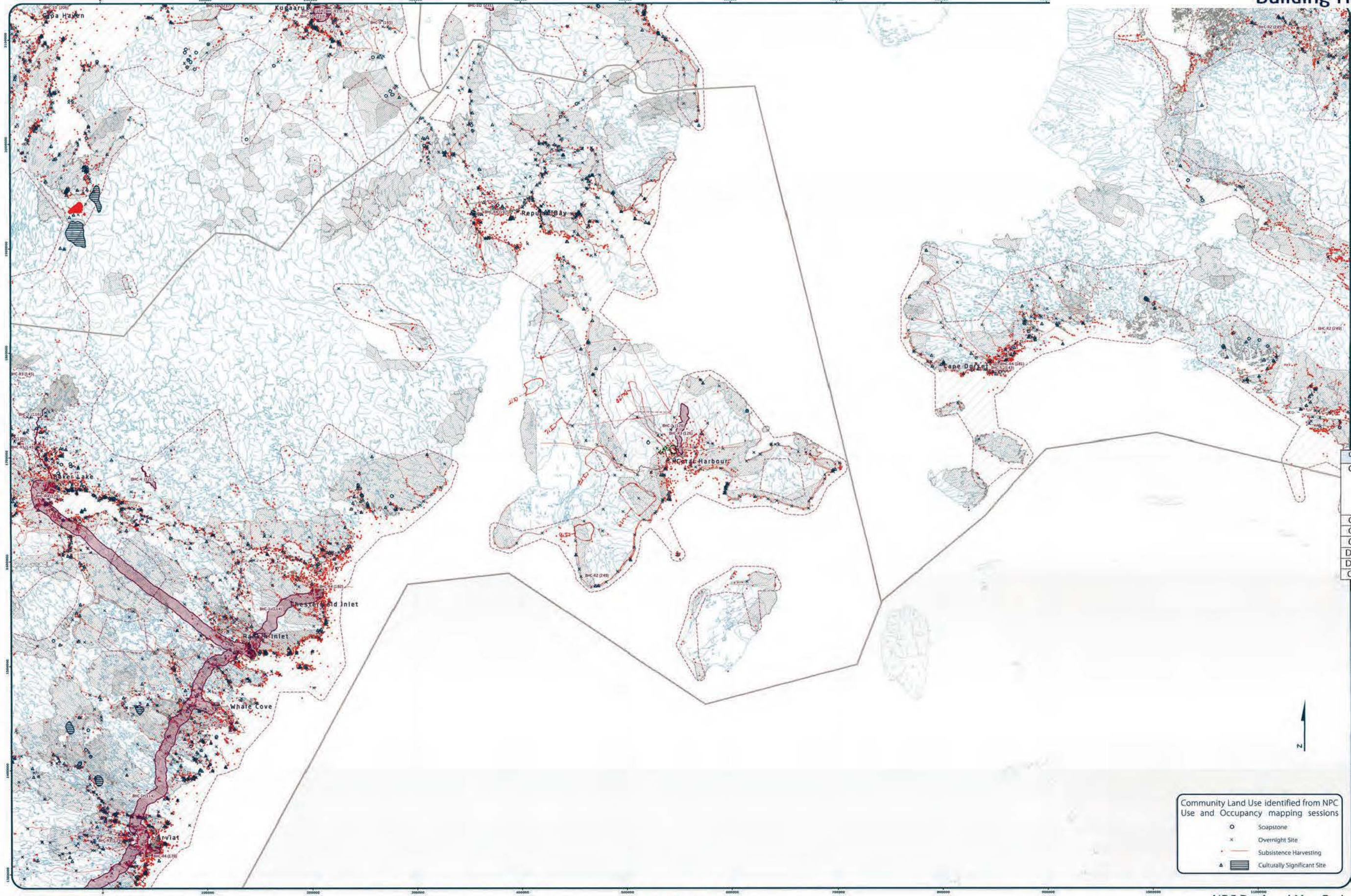
boundaries, provided by Natural Resources Canada (radial data). Most owned lands (ownership of Nunavut lands) incorporated. Territorial parks from the Government of Nunavut. National Parks from Parks Canada. Data for areas within municipal boundaries obtained from Natural Resources Canada (radial data). This map is to be used for reference purposes only by the NRC. Any further use of this map or data therein must be authorized by contacting the Nunavut Planning Commission.

Contribuțiile nr. 067/002-4625 se găsesc în următoarele adrese de e-mail:
E-mail: 067.002.4625@ministry.gov.ro

Community Land Use identified from NPC Use and Occupancy mapping sessions

- Soapstone
- × Overnight Site
- × Subsistence Harvesting
- ▲ Culturally Significant Site

Coral Harbour - Group 3 Results Building Healthier Communities



Designations	Permitted Uses	Prohibited Uses
BHC-1	Roads, Railways, Utilities and Corridors	
BHC-2	Roads, Railways, Utilities and Corridors	
BHC-3	All uses except those Prohibited	Mining
BHC-4	Public, Recreation and Research, Municipal Services	
BHC-5	Municipal Services	All Other Uses
BHC-6	Municipal Services	
BHC-7	Remediation and Reclamation Activities	All Other Uses
BHC-8	Remediation and Reclamation Activities, O&D Operations and Activities	All Other Uses
BHC-9	O&D Operations and Activities	All Other Uses

Code	Comments
C115	Story about fish who climbed the area from ocean to river. Man who had argument about the fish. The fish went on strike and didn't climb that area again. Culturally significant area. Called Myut Tullivnut.
C116	Hunting and traveling area (caribou).
C117	White fish and grayling
C118	fishing arctic char
DW19	very good drinking water all year round
DW20	drinking water (fresh water)
CS21	Airport contaminated site

Code	Comments
C115	Story about fish who climbed the area from ocean to river. Man who had argument about the fish. The fish went on strike and didn't climb that area again. Culturally significant area. Called Myut Tullivnut.
C116	Hunting and traveling area (caribou).
C117	White fish and grayling
C118	fishing arctic char
DW19	very good drinking water all year round
DW20	drinking water (fresh water)
CS21	Airport contaminated site

Community Land Use identified from NPC Use and Occupancy mapping sessions

Legend:

- Soapstone
- × Overnight Site
- + Subsistence Harvesting
- △ Culturally Significant Site

Community Land Use identified from NPC Use and Occupancy mapping sessions

Legend:

- Soapstone
- × Overnight Site
- + Subsistence Harvesting
- △ Culturally Significant Site

Community Land Use identified from NPC Use and Occupancy mapping sessions

Legend:

- Soapstone
- × Overnight Site
- + Subsistence Harvesting
- △ Culturally Significant Site

NPC Regional Map Series



Code	Comments
XD45	Commercial fishing - Arctic Char
XD46	Commercial fishing - Arctic Char
XD47	Commercial fishing - Arctic Char
XD48	Potential Arctic Char fishery
XD49	Potential Arctic Char fishery
XD50	Commercial Caribou harvest before closure
XD51	Commercial Caribou harvest before closure
XD52	Commercial Caribou harvest before closure
XD53	Commercial Caribou harvest before closure



Coordinate System: EPSG:4326
 Projection: Lambert Conformal
 Datum: North American 1983
 False Easting: 0.0000
 False Northing: 0.0000
 Central Meridian: -95.0000
 Standard Parallel 1: 49.0000
 Standard Parallel 2: 77.0000
 Latitude Of Origin: 43.0000

CORAL HARBOUR



Legend and Designations:

- Roads
- Established Paths
- Land not for sale (not applicable)
- Inuit Owned Lands (Surface)
- Inuit Owned Lands (Sub-surface)
- Administrative Boundary

Designations:

- Protected Areas
- Designated Areas
- Designated Areas
- Designated Areas

Reference Table To Recommendations

Code	Comments
XD25	Commercial fishery potential
XD26	Commercial fishery potential
XD27	Extend commercial fishing area: ESED-R1 (249)
XD28	Commercial fishing
XD29	sports hunting for fowl
XD30	sports hunting for fowl
XD31	sports hunting for fowl
XD32	Tourism potential, sports hunting
XD33	Sightseeing and sports hunting for marine mammals
XD34	Tourism potential and sports hunting
XD35	Tourism potential and sports hunting
XD36	Sports hunting and tourism potential
XD37	Sports hunting and tourism potential

Map Information:

Community: Coral Harbour
Region: Nunavut
Community Map: Coral Harbour
Map: Coral Harbour

Signature of the Community: [Signature]

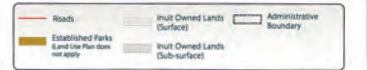
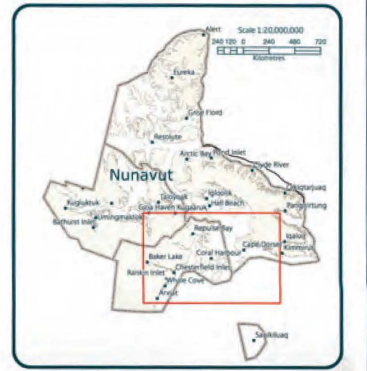
Signature of the Map: [Signature]




CONFIDENTIAL

Map Scale: 1:1,000,000

ENCOURAGING SUSTAINABLE ECONOMIC DEVELOPMENT (ESED)

Scale 1:1,000,000



Designations	Permitted Uses	Prohibited Uses
 R-1 Single-Family Residential	Mining, Remnants and Reconstruction, Roads, Railways, Utilities and Curbside	
 R-2 Medium-Density Residential	On and off gas, Recreation and Transportation Activities	
 R-3 Single-Family Residential		

Reference Table for Recommendations

Project location impacts a mix of commercial zoning categories. The project is located in an area that is zoned for commercial use. The project is located in an area that is zoned for commercial use. The project is located in an area that is zoned for commercial use.

Code	Comments
XD22	In near future will have commercial fishing in this area. We support it.
XD23	sport hunting on Walrus Island
XD24	Sport hunting on Coats Island
XD25	Potential for tourism very beautiful area (Kirchoffer Falls and Fossil Creek)
XD26	Native Point- Potential for tourism

[illegible]

[Network Planning Commission](#)
[Community Consultation Tool](#)
[Local Use Mapping Section](#)

Community: _____
 Location: _____
 Region: _____
 Date: _____
 Community Pilot _____
 Map # _____

Signatures of the Community signify a permission form to conduct mapping session as informants.

1.	_____	16.	_____
2.	_____	17.	_____
3.	_____	18.	_____
4.	_____	19.	_____
5.	_____	20.	_____
6.	_____	21.	_____
7.	_____	22.	_____
8.	_____	23.	_____
9.	_____	24.	_____
10.	_____	25.	_____
11.	_____	26.	_____
12.	_____	27.	_____
13.	_____	28.	_____
14.	_____	29.	_____
15.	_____	30.	_____

Signature of Mapper:

CONFIDENTIALITY STATEMENT




 الجمهورية الموريتانية
 Commission Nationale de l'Aménagement du Territoire
 Commission of Regional Development of Mauritania

Coordinate System: EPSG:42304 LCC
 Projection: Lambert Conformal Conic
 Datum: North American 1983
 False Easting: 0.0000
 False Northing: 0.0000
 Central Meridian: -95.0000
 Standard Parallel 1: 49.0000
 Standard Parallel 2: 77.0000
 Latitude Of Origin: 49.0000

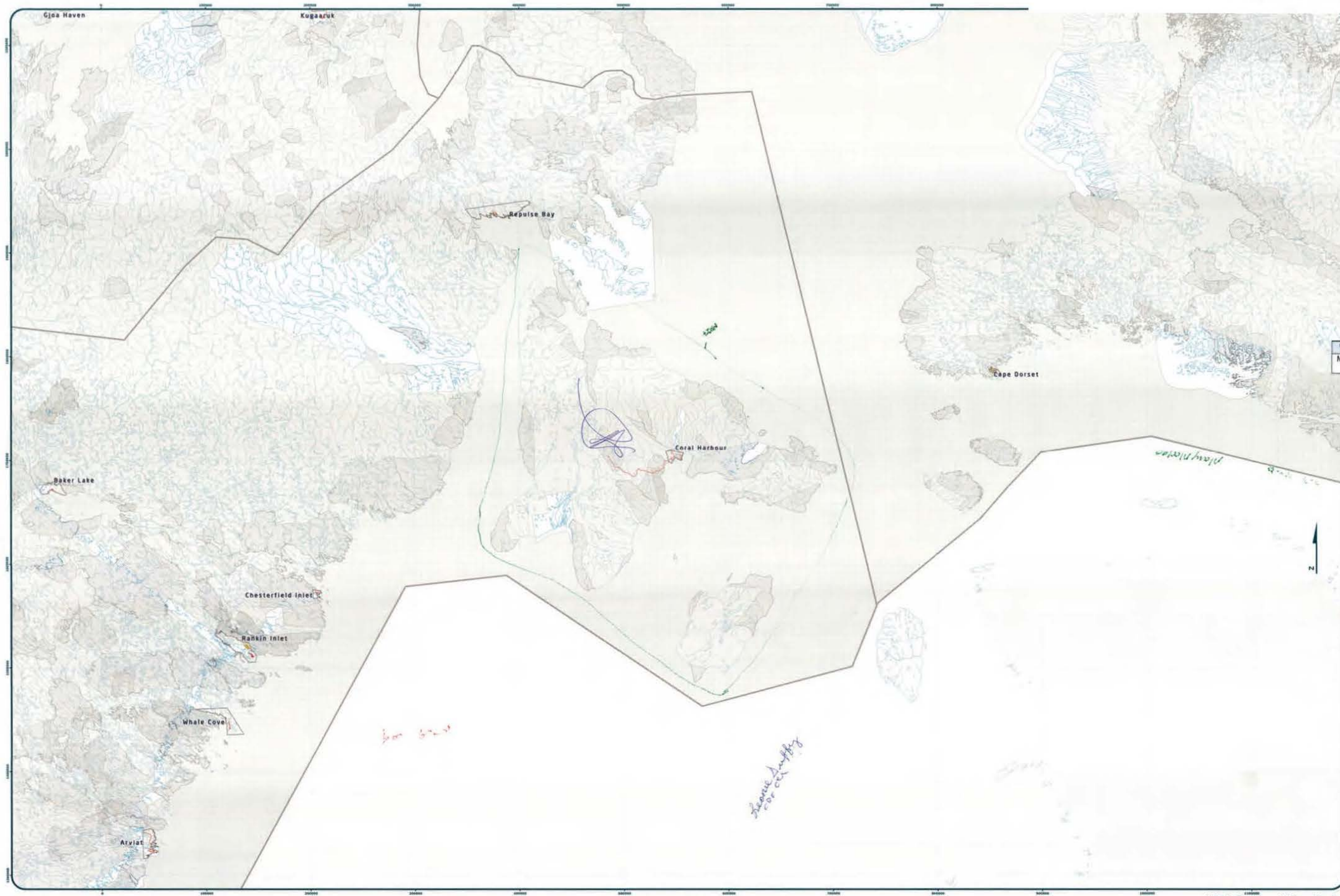
For Land Use Designations and Recommendations sources see draft Nunavut Land Use Plan and background material data source documents.

Habitat created by utilizing vessel traffic in Hulahula toolbar courtesy of Natural Resources Canada; mapping created by merging all 1:250,000 WTB shapefiles in Nunavut, version 2.G, and selecting all waterbodies over 50 hectares in land area of Nunavut, courtesy of Geogratis. Administrative boundaries consist of NRC's Environmental Protection Act (EPA) listed areas used as reference points for designating environmentally sensitive regions, provided by Natural Resources Canada (Canada.ca); Inuit Owned Lands (courtesy of Nunavut Tunngavik Incorporated). Territorial parks from the Government of Nunavut, National Parks from Parks Canada (Parks Canada.gc.ca), and Municipal Boundaries obtained from Statistics Canada (Statistics Canada).

This map is to be used for reference purposes only by the NPC.
Any further use of this map or data therein must be authorized by contacting the Nunavut Planning Commission at: (867)988-4625 or email: nunavutplanning@nvc.nv.ca.
Wednesday, January 23rd, 2014

Coral Harbour - Group 3 Results Mixed Use

Scale 1:1,000,000



Designations	Permitted Use	Prohibited Use
...

Comments Welcome

Code	Comments
MU27	Does not want oil and gas in this area but is open to mining in the area

This is a blank sheet of white paper with horizontal blue ruling lines. The lines are evenly spaced and run across the width of the page. There is no handwriting or other markings on the paper.

Student ID: _____
 Date: _____
 Page: _____

CH

Continuity:
 Location:
 Region:
 Date:
 Continuity ID:
 Map #:

Repartition des communes (après la suppression de la commune regroupée en préfecture)	
1.	24
2.	17
3.	18
4.	19
5.	20
6.	21
7.	22
8.	23
9.	24
10.	25
11.	26
12.	27
13.	28
14.	29
15.	30

Signature of Manager: _____



 **Nacionalna Komisija
za Planiranje
Komunikacija**
Republika Srbija
Ministarstvo
Kulture i
Nasledstva

Coordinate System: EPSG:43264 UTM
Projection: Lambert Conformal Conic
Datum: North American 1983
Gauss Krüger: 5, 50200
False Northing: 5, 50200
Central Meridian: -45, 00000
Standard Parallel 1: 45, 00000
Standard Parallel 2: 73, 50000
Latitude Of Origin: 49, 00000
Units: Meter

[illegible]

Scale 1:1,000,000

Appendix 5: Wrap Up Session

A small group of participants returned to identify additional important areas during the wrap up session.

NPC Regional Map Series



Code	Comments
MU01	There is a shipwreck in the area, and an arm was found sticking out of the mud. The area also still has buildings from the old weather station. Had lived here and worked on buildings and equipment, but was never paid or thanked.
MU02	Contaminated site

[illegible]

Residential Planning Commission
Community Development Team
Local Urban Planning Assistant

CONFIDENTIAL

Cd 5-2-18 11:54 AM
Residential Planning Commission
11/27/2018

Community/
Location: Small Westside
Region: Community of Hill
Zone: Residential
Assessment Area: Map 1 of 1
Map: Map 1 of 1

Signatures of the Community Agency in accordance
with the local planning commission or relevant entity

1. Mark Westside
2. Community Development
3. Residential Planning
4. Small Westside
5. _____
6. _____
7. _____
8. _____
9. _____
10. _____
11. _____
12. _____
13. _____

Signature of Mapper:
Phyllis

14. _____
15. _____
16. _____
17. _____
18. _____
19. _____
20. _____
21. _____
22. _____
23. _____
24. _____
25. _____
26. _____
27. _____
28. _____
29. _____
30. _____

COMMUNITY DEVELOPMENT TEAM




Coordinate System: EPSG 42304 LCC
 Projection: Lambert Conformal Conic
 Datum: North American 1983
 False Easting: 0.0000
 False Northing: 0.0000
 Central Meridian: -95.0000
 Standard Parallel 1: 49.0000
 Standard Parallel 2: 77.0000
 Latitude Of Origin: 49.0000
 Units: Meter

map **lofi** **10/1**

Working Draft Sub-regional map and data for
Land Use Designations and Recommendations sources see Draft Nonpoint Land Use Plan and background
information data source documents

integrated created by utilizing field notes in Milwaukee Township, Wisconsin
being merged at 1:250,000 scale 787 sheets in township, version 2.0, and selecting all watersheds
in the area

Map is a Land Use Resource, courtesy of Geographic Association boundaries consist of
political boundaries, created to reflect Regional Joint Association jurisdictions, combined with natural
boundaries, provided by Natural Resources Canada cadastre data, Inuit Owned Lands consist of Nunavut
Incorporated, Territorial part, from the Government of Nunavut, National Parks from Parks Canada
Data for areas within municipal boundaries obtained from Natural Resources Canada cadastre data

This map is to be used for reference purposes only if the
Any further use of this map or data therein must be authorized by contacting the Milwaukee Planning
Commission at (877)983-4623 or by email at info@milwaukeeplanning.com

Wednesday January 22, 2014

Appendix 6: Follow-up Meeting

The NPC returned to the community and reviewed a draft version of this report with the Hamlet Council, Hunters and Trappers Organization, and the Community Lands and Resource Committee. The meeting included:

- A presentation of a draft version of this report
- An overview of the mapped information that was recorded for each topic:
 - Protecting and Sustaining the Environment
 - Encouraging Conservation Planning
 - Building Healthier Communities
 - Encouraging Sustainable Economic Development
 - Mixed Use
- General discussion and comments including:
 - Opportunities to provide additional comments.