

Summary of Community Meetings on the
Draft Nunavut Land Use Plan

ARVIAT

November 6 - 7, 2013



Nunavut Planning
Commission



Revised - May 2014

Contents

| | | | |
|--|----|---|----|
| Introduction..... | 3 | Appendix 1: Open House | 17 |
| 1.1 Context | 3 | Appendix 2: Elected Officials Meeting | 18 |
| 1.2 Purpose..... | 3 | Appendix 3: Community Workshop Scanned Maps | 19 |
| 1.3 Methodology..... | 3 | Appendix 4: Follow-up Meeting | 33 |
| 1.4 Public Awareness | 3 | | |
| 1.5 Community Population and Participation..... | 3 | | |
| Protecting and Sustaining the Environment | 4 | | |
| 2.1 Areas presented to participants..... | 4 | | |
| 2.2 Areas identified by participants | 4 | | |
| 2.3 Areas of importance to Protecting and Sustaining the Environment.. | 4 | | |
| Encouraging Conservation Planning..... | 6 | | |
| 3.1 Areas presented to participants | 6 | | |
| 3.2 Areas identified by participants | 6 | | |
| 3.3 Areas of importance to Encouraging Conservation Planning | 6 | | |
| Building Healthier Communities | 8 | | |
| 4.1 Areas presented to participants..... | 8 | | |
| 4.2 Areas identified by participants | 8 | | |
| 4.3 Areas of importance to Building Healthier Communities | 8 | | |
| Encouraging Sustainable Economic Development..... | 10 | | |
| 5.1 Areas presented to participants..... | 10 | | |
| 5.2 Areas identified by participants | 10 | | |
| 5.3 Areas of importance to Encouraging Sustainable Economic Development | 10 | | |
| Mixed Use | 12 | | |
| 6.1 Areas identified in the Draft Plan | 12 | | |
| 6.2 Areas identified by participants | 12 | | |
| Overlapping Goals | 15 | | |
| 7.1 Areas identified for multiple goals | 15 | | |

Chapter 1: Introduction

1.1 Context

The Nunavut Planning Commission (NPC) is preparing a land use plan to guide and direct resource use and development in the Nunavut Settlement Area (NSA). As part of its efforts, the NPC is facilitating discussions in each Nunavut community on land use and resource management issues. Information that is obtained from these discussions will be used to inform decisions regarding the further development of the Nunavut Land Use Plan (NLUP).

1.2 Purpose

This report presents information obtained during the NPC's visit to the community of Arviat. The purpose of the report is to inform decisions regarding the further development of the NLUP, ensuring that the plan reflects the priorities and values of residents.

It is important to note that the information contained in the Community Report will be considered in conjunction with all other feedback when revising the DNLUP.

1.3 Methodology

Information was presented to and received from participants in Arviat in accordance with the Nunavut Planning Commission's Community Engagement Strategy (Engagement Strategy). The Engagement Strategy provides for the following methods for presenting and receiving information;

- **Open house;** information contained in the Draft Nunavut Land Use Plan (DNLUP) was presented on 7 multi lingual large format poster boards. Participants were encouraged to review the posters, ask questions and provide feedback. Comments and questions were recorded by NPC staff and are contained in Appendix 1.
- **Elected Officials Meeting;** The NPC Chairperson and NPC staff met with senior and elected officials in the community. The development process for the DNLUP, its content and next steps were presented.

Comments and questions were recorded during the session and are contained in Appendix 2.

- **Public Workshop;** A formal presentation of the Draft Plan content was provided to participants, including a slide overview of its content. Following the presentation, an opportunity was provided for questions and comments from participants. There were no comments or questions.

A mapping session followed the presentation of the Draft Plan. The mapping session involved discussions regarding the topics presented in the DNLUP and encouraged participants to identify additional areas and issues important for inclusion in a NLUP. Information received during this session was recorded by NPC staff and is included in Appendix 3.

- **Wrap Up Session;** Staff was available to discuss the areas identified during the mapping and identify any additional issues or areas of interest.

Areas that participants identified during mapping sessions as important to a particular goal have, in the majority of cases, been included in this report as they were recorded. In instances where participants identified an area that was better suited to another goal, the area has been reclassified to the more suitable goal and has been verified as appropriate to do so by the Community.

A follow-up meeting was held on April 22, 2014 to review a draft version of this report with the Hamlet Council, Hunters and Trappers Organization, and Community Lands and Resource Committee. A summary of this meeting is included in Appendix 4.

1.4 Public Awareness

The NPC raised public awareness regarding its visit to Arviat in accordance with the Engagement Strategy.

The DNLUP and supporting materials were mailed to the Mayor and Council of Arviat, the Hunters and Trappers Organizations (HTO) in September 2012. In addition, letters of invitation were sent to the Arviat Mayor and Council and HTO

in advance of the NPC's visit to advise of the meetings and to encourage participation. Follow up phone calls were also made.

Public notice of the various events was provided in the following ways:

- **Nunatsiaq News and Nunavut News/North;** notice of community meetings were posted in both newspapers a minimum of 45 days in advance.
- **Co-op cable TV;** notice of community meetings was run a minimum of 45 days in advance for one week and run again for no less than 14 days before the meetings.
- **Community radio;** notices were read by the hosts and a live interview with the Commission Chairperson was conducted.
- **Community bulletin boards;** notices were posted on bulletin boards around the community 45 days and again 14 days in advance of the meetings.
- **Community mail drop;** one page flyers that announced the meetings and their purpose were delivered to the post office in each community for all mail boxes that accept unaddressed ad-mail.
- **nunavut.ca;** the schedule of community visits, the Draft Plan, and all supporting information was available on the Commission's website.

1.5 Community Population and Participation

Arviat is a community of approximately 2320 people (Statistics Canada, 2011 Census). It is located on the northwestern shore of Hudson Bay (see Figure 1).

The Commission visited the community on November 6-7, 2013. All events occurred as scheduled. The sessions were attended as follows;

- **Elected Officials Meeting;** the Mayor and members of the Hamlet Council and HTO attended the elected officials meeting.
- **Open house;** approximately 15 people attended the open house to review the Draft Plan.
- **Public Workshop;** approximately 65 people attended the presentation of the DNLUP and facilitated mapping sessions. Information was recorded in three separate mapping groups.
- **Wrap Up Session;** 0 people attended the wrap up session.

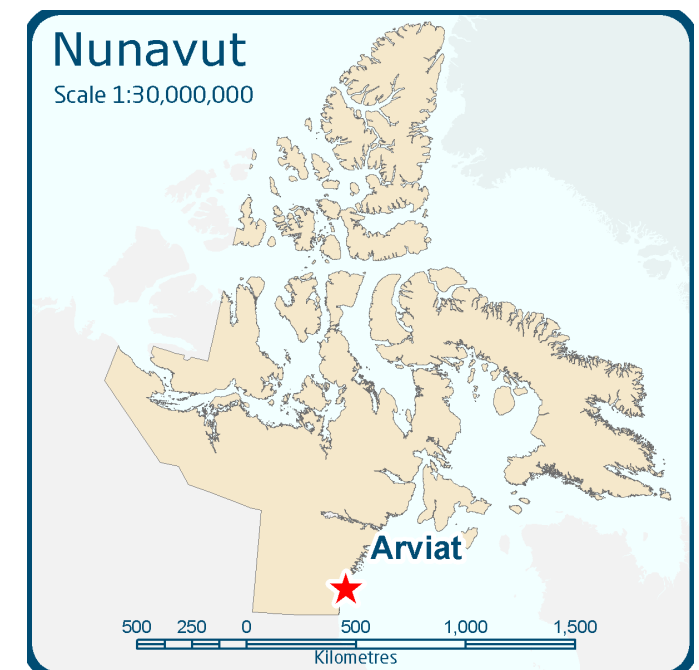


Figure 1. Location of Arviat

Chapter 2: Protecting and Sustaining the Environment

Protecting and Sustaining the Environment was one of five topics presented to and discussed by participants during the Open House, Elected Officials Meeting, Public Workshop and Wrap up Session, collectively referred to in this document as information sharing and gathering sessions.

2.1 Areas presented to participants

During the information sharing and gathering sessions, participants were presented the following areas and issues as important to Protecting and Sustaining the Environment.

- Key bird habitat sites
- Caribou Habitat sites
- Atlantic Cod Lakes
- Cumulative Impacts
- Transboundary considerations
- Climate change

The importance of these issues and areas to Protecting and Sustaining the Environment was not disputed by participants during the information sharing and gathering sessions.

2.2 Areas identified by participants

Additional areas and issues were identified by participants as important to Protecting and Sustaining the Environment during the information sharing and gathering sessions. These additional areas are;

- Historic areas
- Caribou habitat
- Hunting areas
- Fish habitat
- Muskox habitat

- Grizzly bear habitat
- Polar bear habitat
- Whale habitat
- Wolves/wolverine habitat
- Bird habitat

2.3 Areas of importance to Protecting and Sustaining the Environment

Areas and issues discussed during the information sharing and gathering sessions as important to Protecting and Sustaining the Environment are illustrated on Map 1, including areas identified in the DNLUP and areas identified by the community. Scanned images of the maps on which community feedback was recorded can be found in Appendix 4.

Based on discussions with participants, the NPC understands that:

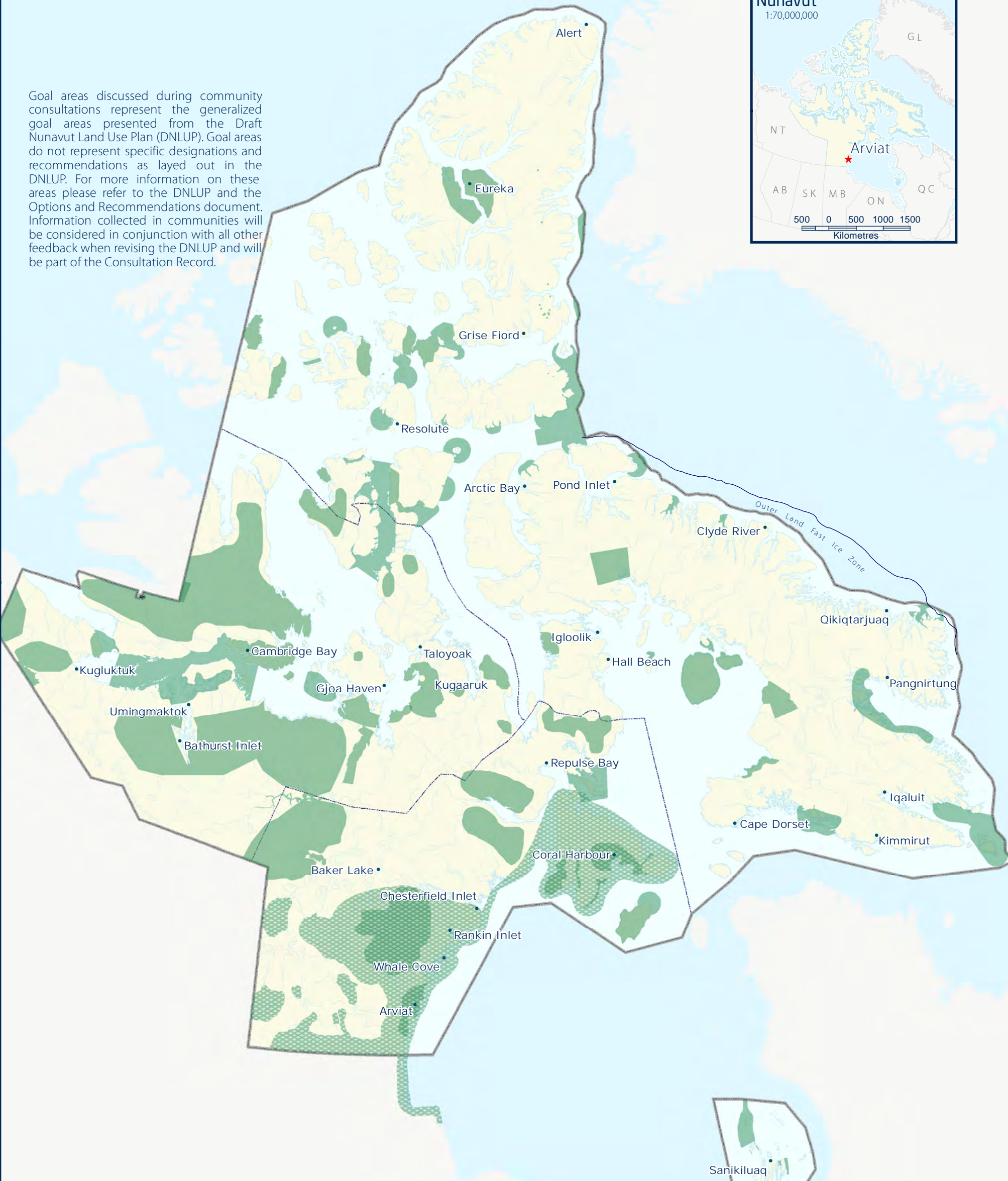
- The areas identified on Map 1 are considered by the Community to be important to Protecting and Sustaining the Environment.
- In these areas, the community would like the NLUP to encourage activities that support environmental protection and management needs, including wildlife conservation, protection and management.

This feedback will be considered in conjunction with all other feedback when revising the DNLUP.



-  PSE Goal areas from the DNLUP discussed during community consultations
-  Additional PSE Goal areas identified during community consultations

Goal areas discussed during community consultations represent the generalized goal areas presented from the Draft Nunavut Land Use Plan (DNLUP). Goal areas do not represent specific designations and recommendations as layed out in the DNLUP. For more information on these areas please refer to the DNLUP and the Options and Recommendations document. Information collected in communities will be considered in conjunction with all other feedback when revising the DNLUP and will be part of the Consultation Record.



For Data Sources see Draft Nunavut Land Use Plan (DNLUP). Areas identified by community collected as part of the Nunavut Planning Commissions Community Engagement Strategy during the Mapping Sessions for the DNLUP on November 6 & 7, 2013. Maps were digitized at the Nunavut Planning Commission. To be used for illustration purposes only as part of the Draft Nunavut Land Use Plan Consultation Process.



Nunavunmi Parnaiyit
Nunavut Planning Commission
Commission d'Aménagement du Nunavut

Projection: Canada Lambert Conformal Conic, NAD83
Produced by the Nunavut Planning Commission: (867) 983-4625, npc@nunavut.ca
Tuesday, May 27, 2014

Chapter 3: Encouraging Conservation Planning

Encouraging Conservation Planning was one of five topics presented to and discussed by the participants during the information sharing and gathering sessions.

3.1 Areas presented to participants

During the information sharing and gathering sessions, participants were presented the following areas and issues as important to Encouraging Conservation Planning;

- National Parks Awaiting Full Establishment
- Proposed National Parks
- National Marine Conservation Areas
- Thelon Wildlife Sanctuary
- Migratory Bird Sanctuaries
- National Wildlife Areas
- National Historic Sites
- Territorial Historic Sites
- Heritage Rivers

The importance of these issues and areas to Encouraging Conservation Planning was not disputed by participants during the information sharing and gathering sessions.

3.2 Areas identified by participants

Additional areas and issues were identified by participants as important to Encouraging Conservation Planning during the information sharing and gathering sessions. These additional areas are.

- Historic sites
- Camping areas (hunting, trapping, fishing)
- Caribou habitat

3.3 Areas of importance to Encouraging Conservation Planning

Areas and issues discussed during the information sharing and gathering sessions as important to Encouraging Conservation Planning are illustrated on Map 2, including areas identified in the DNLUP and areas identified by the community. Scanned images of the maps on which community feedback was recorded can be found in Appendix 4.

Based on discussions with participants, the NPC understands that:

- The areas identified on Map 2 are considered by the Community to be important to Encouraging Conservation Planning.
- In these areas, the community would like the NLUP to encourage activities that support environmental protection and management needs, including wildlife conservation, protection and management.

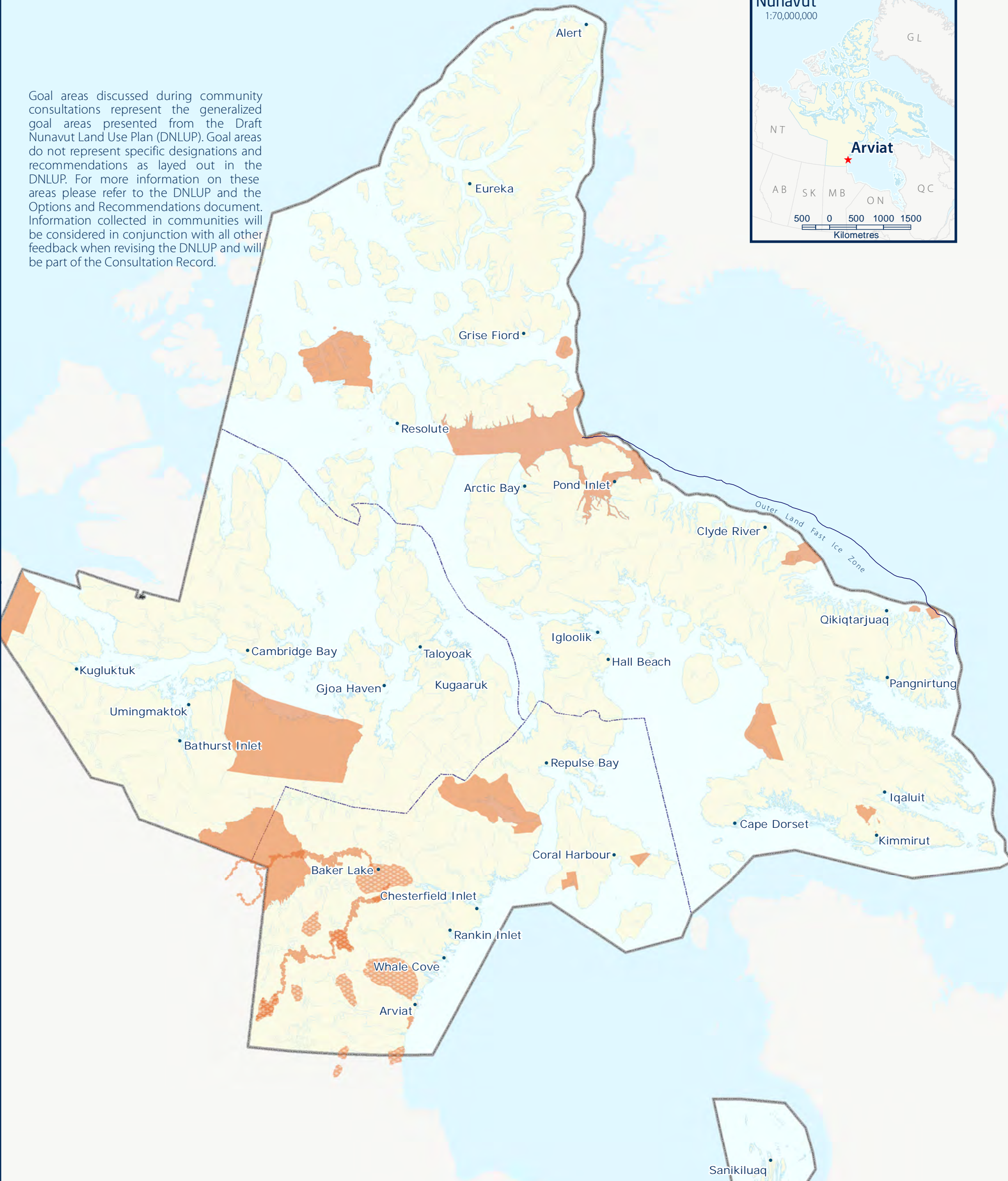
This feedback will be considered in conjunction with all other feedback when revising the DNLUP.



 ECP Goal areas from the DNLUP discussed during community consultations

 Additional ECP Goal areas identified during community consultations

Goal areas discussed during community consultations represent the generalized goal areas presented from the Draft Nunavut Land Use Plan (DNLUP). Goal areas do not represent specific designations and recommendations as layed out in the DNLUP. For more information on these areas please refer to the DNLUP and the Options and Recommendations document. Information collected in communities will be considered in conjunction with all other feedback when revising the DNLUP and will be part of the Consultation Record.



ᓄᓇᓂᓄᓐ ᐸᓐᓇᓂᓄᓐ
Nunavunmi Parnaiyiit
Nunavut Planning Commission
Commission d'Aménagement du Nunavut



For Data Sources see Draft Nunavut Land Use Plan (DNLUP). Areas identified by community collected as part of the Nunavut Planning Commissions Community Engagement Strategy during the Mapping Sessions for the DNLUP on November 6 & 7, 2013. Maps were digitized at the Nunavut Planning Commission.
To be used for illustration purposes only as part of the Draft Nunavut Land Use Plan Consultation Process.

Projection: Canada Lambert Conformal Conic, NAD83
Produced by the Nunavut Planning Commission: (867) 983-4625, npc@nunavut.ca
May-28-14

Chapter 4: Building Healthier Communities

Building Healthier Communities was one of five topics presented to and discussed by the participants during the information sharing and gathering sessions.

4.1 Areas presented to participants

During the information sharing and gathering sessions, participants were presented the following areas and issues as important to Building Healthier Communities;

- Areas of Community Interest
- Community Land Use
- Transportation Infrastructure
- Unincorporated Communities
- Alternative Energy Sources
- Community drinking water supplies
- Land remediation
- Northern Contaminated Sites Program
- Aerodromes
- Canadian Forces Station
- Northern Warning System sites

The importance of these issues and areas to Building Healthier Communities was not disputed by participants.

4.2 Areas identified by participants

Additional areas and issues were identified by participants as important to contributing to the goal of Building Healthier Communities during the information sharing and gathering sessions. These additional areas are;

- Transportation routes

- Historic sites
- Contaminated sites
- Drinking water

4.3 Areas of importance to Building Healthier Communities

Areas and issues discussed during the information sharing and gathering sessions as important to Building Healthier Communities are illustrated on Map 3, including areas identified in the DNLUP and areas identified by the community. Scanned images of the maps on which community feedback was recorded can be found in Appendix 4.

Based on discussions with participants, the NPC understands that:

- The areas identified on Map 3 are considered by the Community to be important to Building Healthier Communities.
- In these areas, the community would like the NLUP to encourage activities that support community needs and cultural priorities.

This feedback will be considered in conjunction with all other feedback when revising the DNLUP.





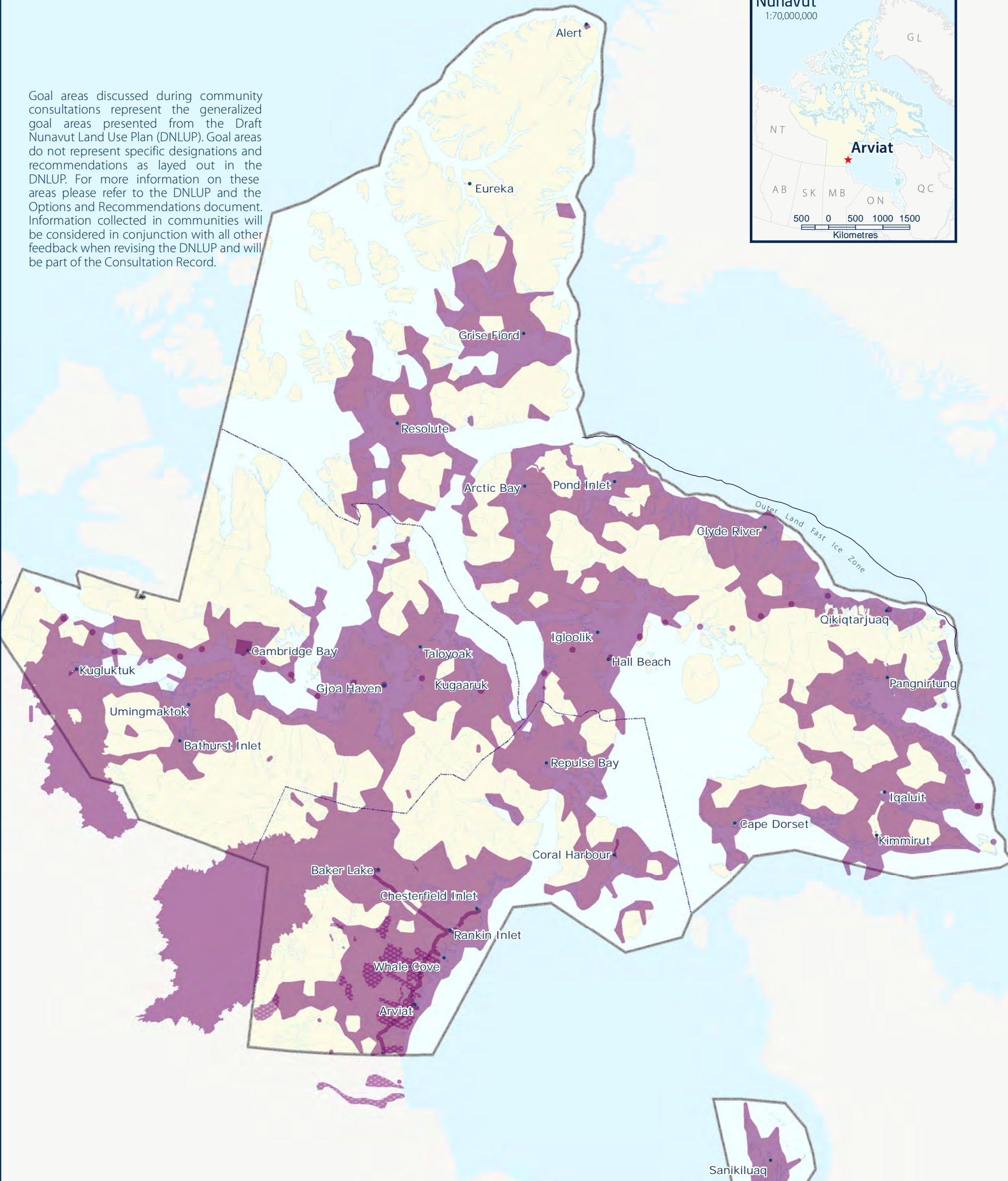
BHC Goal areas from the DNLUP discussed during community consultations



Additional BHC Goal areas identified during community consultations

Goal areas discussed during community consultations represent the generalized goal areas presented from the Draft Nunavut Land Use Plan (DNLUP). Goal areas do not represent specific designations and recommendations as layed out in the DNLUP. For more information on these areas please refer to the DNLUP and the Options and Recommendations document. Information collected in communities will be considered in conjunction with all other feedback when revising the DNLUP and will be part of the Consultation Record.

Nunavut
1:70,000,000



For Data Sources see Draft Nunavut Land Use Plan (DNLUP). Areas identified by community collected as part of the Nunavut Planning Commissions Community Engagement Strategy during the Mapping Sessions for the DNLUP on November 6 & 7, 2013. Maps were digitized at the Nunavut Planning Commission. To be used for illustration purposes only as part of the Draft Nunavut Land Use Plan Consultation Process.



Nunavunmi Parnaiyiit
Nunavut Planning Commission
Commission d'Aménagement du Nunavut



Projection: Canada Lambert Conformal Conic, NAD83
Produced by the Nunavut Planning Commission: (867) 983-4625, npc@nunavut.ca
May-28-14

Chapter 5: Encouraging Sustainable Economic Development

Encouraging Sustainable Economic Development was one of five topics presented to and discussed by the participants during the information sharing and gathering sessions.

5.1 Areas presented to participants

During the information sharing and gathering sessions, participants were presented with the following areas important to Encouraging Sustainable Economic Development;

- Mineral Exploration and Production
- Oil and Gas Exploration
- Commercial Fisheries

The importance of these issues and areas to Encouraging Sustainable Economic Development was not disputed by participants during the information sharing and gathering sessions.

5.2 Areas identified by participants

Additional areas and issues were identified by participants as important to Encouraging Sustainable Economic Development during the information sharing and gathering sessions. The additional areas identified are;

- Sports hunting and fishing
- Soapstone quarry
- Seal and caribou hunting

5.3 Areas of importance to Encouraging Sustainable Economic Development

Areas and issues discussed during the information sharing and gathering sessions as important to Encouraging Sustainable Economic Development are illustrated on Map 4, including areas identified in the DNLUP and areas identified by the



community. Scanned images of the maps on which community feedback was recorded can be found in Appendix 4.

Based on discussions with participants, the NPC understands that:

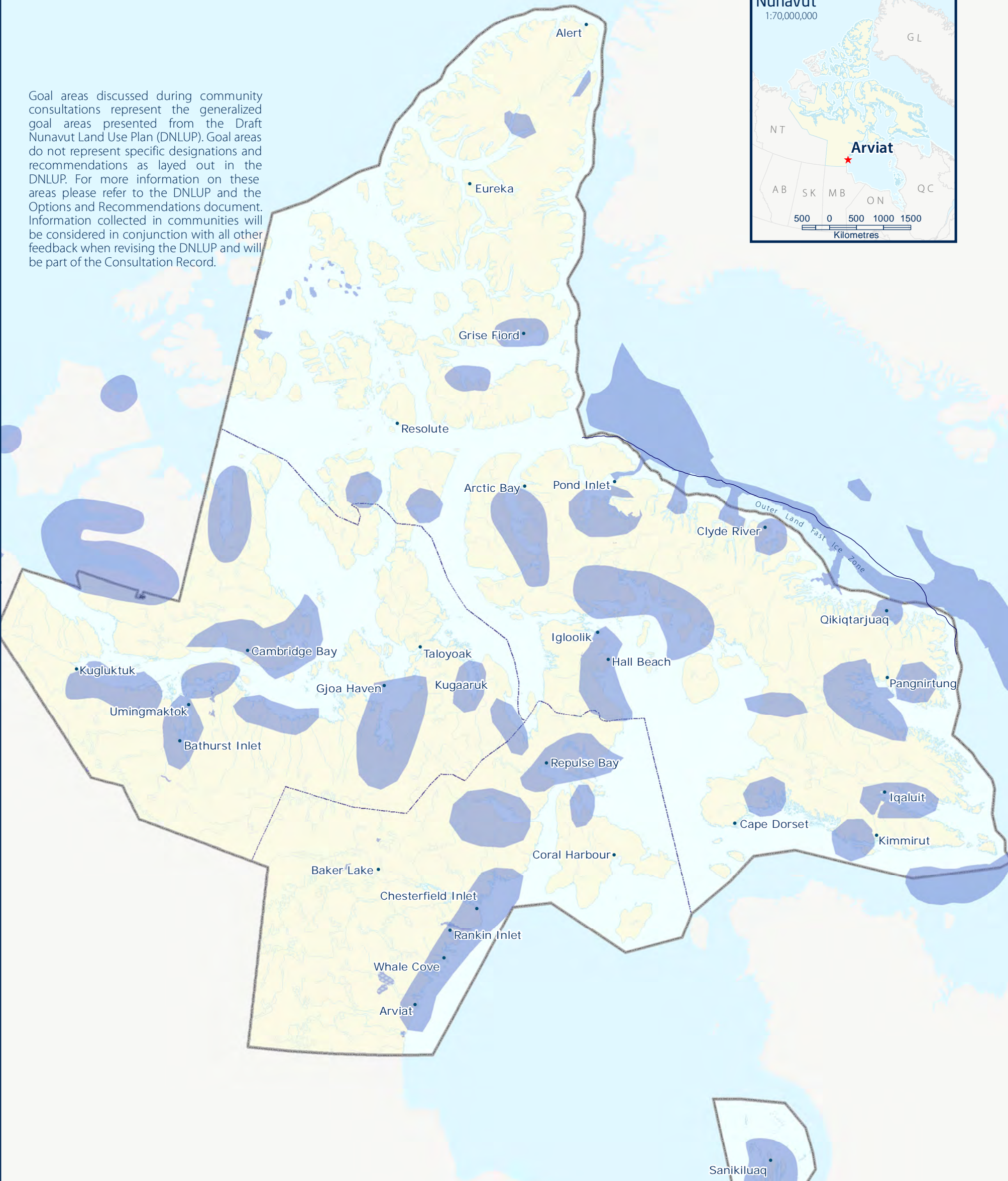
- The areas identified on Map 4 are considered by the Community to be important to Encouraging Sustainable Economic Development.
- In these areas, the community would like the NLUP to encourage activities that support economic opportunities and needs.

This feedback will be considered in conjunction with all other feedback when revising the DNLUP.

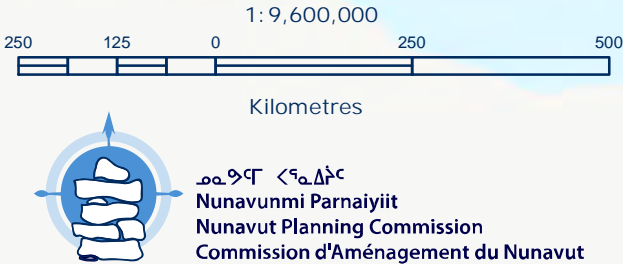


-  ESED Goal areas from the DNLUP discussed during community consultations
-  Additional ESED Goal areas identified during community consultations

Goal areas discussed during community consultations represent the generalized goal areas presented from the Draft Nunavut Land Use Plan (DNLUP). Goal areas do not represent specific designations and recommendations as layed out in the DNLUP. For more information on these areas please refer to the DNLUP and the Options and Recommendations document. Information collected in communities will be considered in conjunction with all other feedback when revising the DNLUP and will be part of the Consultation Record.



For Data Sources see Draft Nunavut Land Use Plan (DNLUP). Areas identified by community collected as part of the Nunavut Planning Commissions Community Engagement Strategy during the Mapping Sessions for the DNLUP on November 6 & 7, 2013. Maps were digitized at the Nunavut Planning Commission. To be used for illustration purposes only as part of the Draft Nunavut Land Use Plan Consultation Process.



Projection: Canada Lambert Conformal Conic, NAD83
Produced by the Nunavut Planning Commission: (867) 983-4625, npc@nunavut.ca
May-28-14

6.1 Areas identified in the Draft Plan

The DNLUP identifies areas important for a variety of uses. These areas were presented to participants during the workshop as Mixed Use Areas. These areas, as they occur around the community, are illustrated on Map 5.

6.2 Areas identified by participants

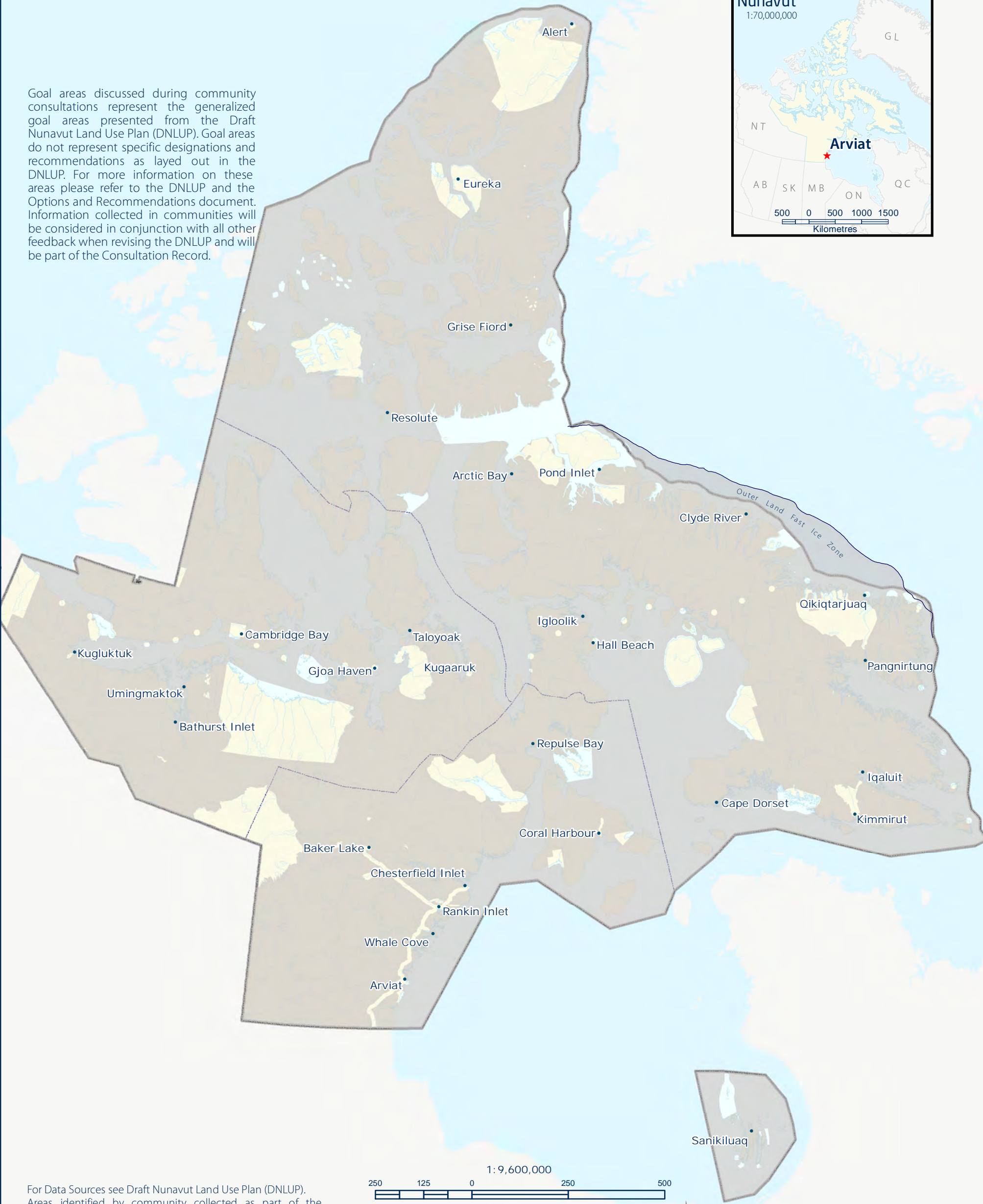
No additional areas were identified as Mixed Use by participants. However, some areas identified as Mixed Use in the DNLUP were considered by participants to require additional protection because of their particular qualities. These areas and the goals they are important for are identified on Map 6.





MU Goal areas from DNLUP discussed during community consultations

Goal areas discussed during community consultations represent the generalized goal areas presented from the Draft Nunavut Land Use Plan (DNLUP). Goal areas do not represent specific designations and recommendations as layed out in the DNLUP. For more information on these areas please refer to the DNLUP and the Options and Recommendations document. Information collected in communities will be considered in conjunction with all other feedback when revising the DNLUP and will be part of the Consultation Record.



For Data Sources see Draft Nunavut Land Use Plan (DNLUP). Areas identified by community collected as part of the Nunavut Planning Commissions Community Engagement Strategy during the Mapping Sessions for the DNLUP on November 6 & 7, 2013. Maps were digitized at the Nunavut Planning Commission. To be used for illustration purposes only as part of the Draft Nunavut Land Use Plan Consultation Process.



ᓄᓇᓂᓄᓐ ᐸᓐᓇᐱᓐᓴᓐ
Nunavunmi Parnaiyiit
Nunavut Planning Commission
Commission d'Aménagement du Nunavut

Projection: Canada Lambert Conformal Conic, NAD83
Produced by the Nunavut Planning Commission: (867) 983-4625, npc@nunavut.ca
December-09-13

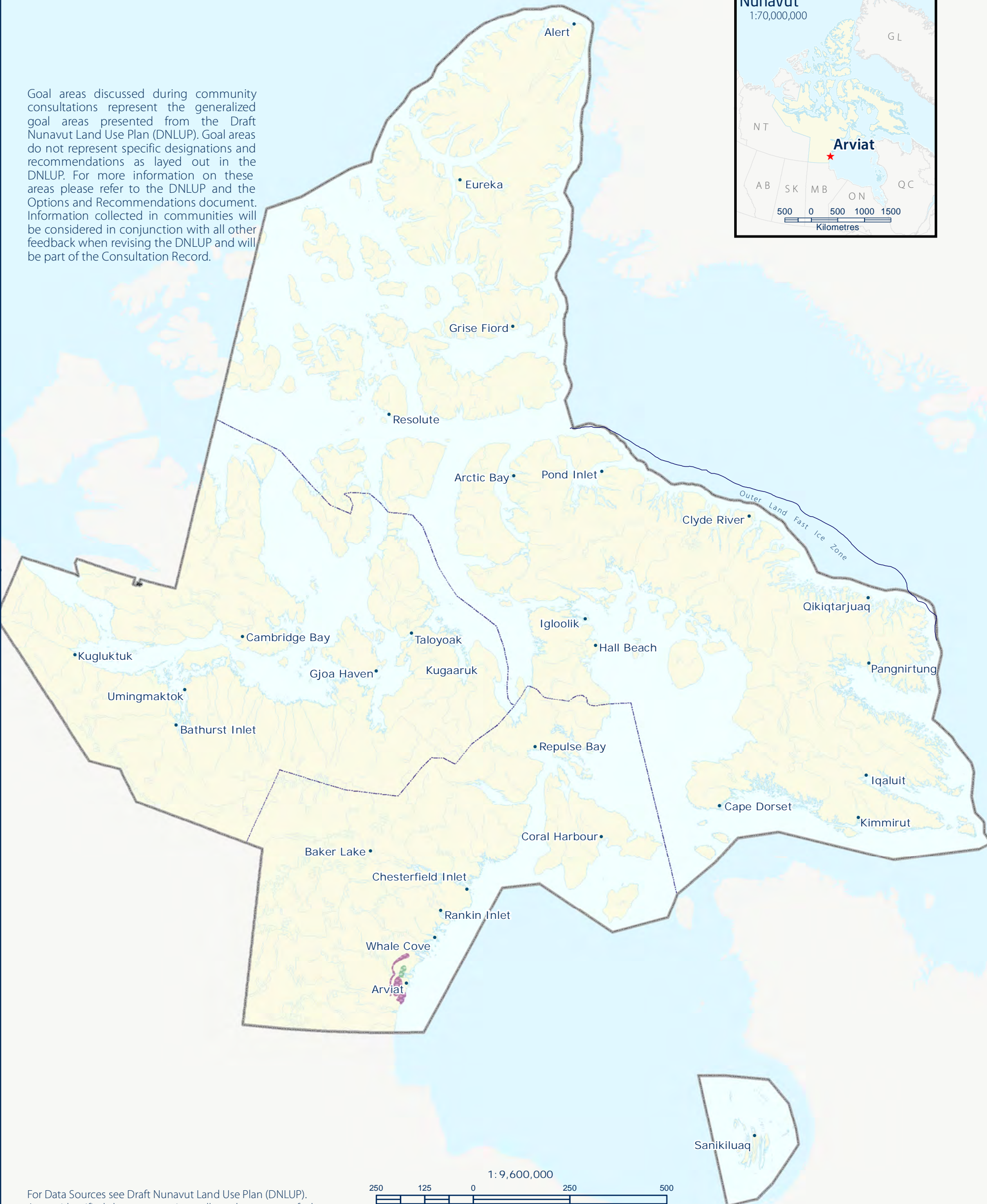


Additional PSE Goal areas identified during community consultations



Additional BHC Goal areas identified during community consultations

Goal areas discussed during community consultations represent the generalized goal areas presented from the Draft Nunavut Land Use Plan (DNLUP). Goal areas do not represent specific designations and recommendations as layed out in the DNLUP. For more information on these areas please refer to the DNLUP and the Options and Recommendations document. Information collected in communities will be considered in conjunction with all other feedback when revising the DNLUP and will be part of the Consultation Record.



For Data Sources see Draft Nunavut Land Use Plan (DNLUP). Areas identified by community collected as part of the Nunavut Planning Commissions Community Engagement Strategy during the Mapping Sessions for the DNLUP on November 6 & 7, 2013. Maps were digitized at the Nunavut Planning Commission. To be used for illustration purposes only as part of the Draft Nunavut Land Use Plan Consultation Process.



ᑎᓄᓐᓂᓐ ᑕᓐᓂᓐᓂᓐ
Nunavunmi Parnaiyiit
Nunavut Planning Commission
Commission d'Aménagement du Nunavut

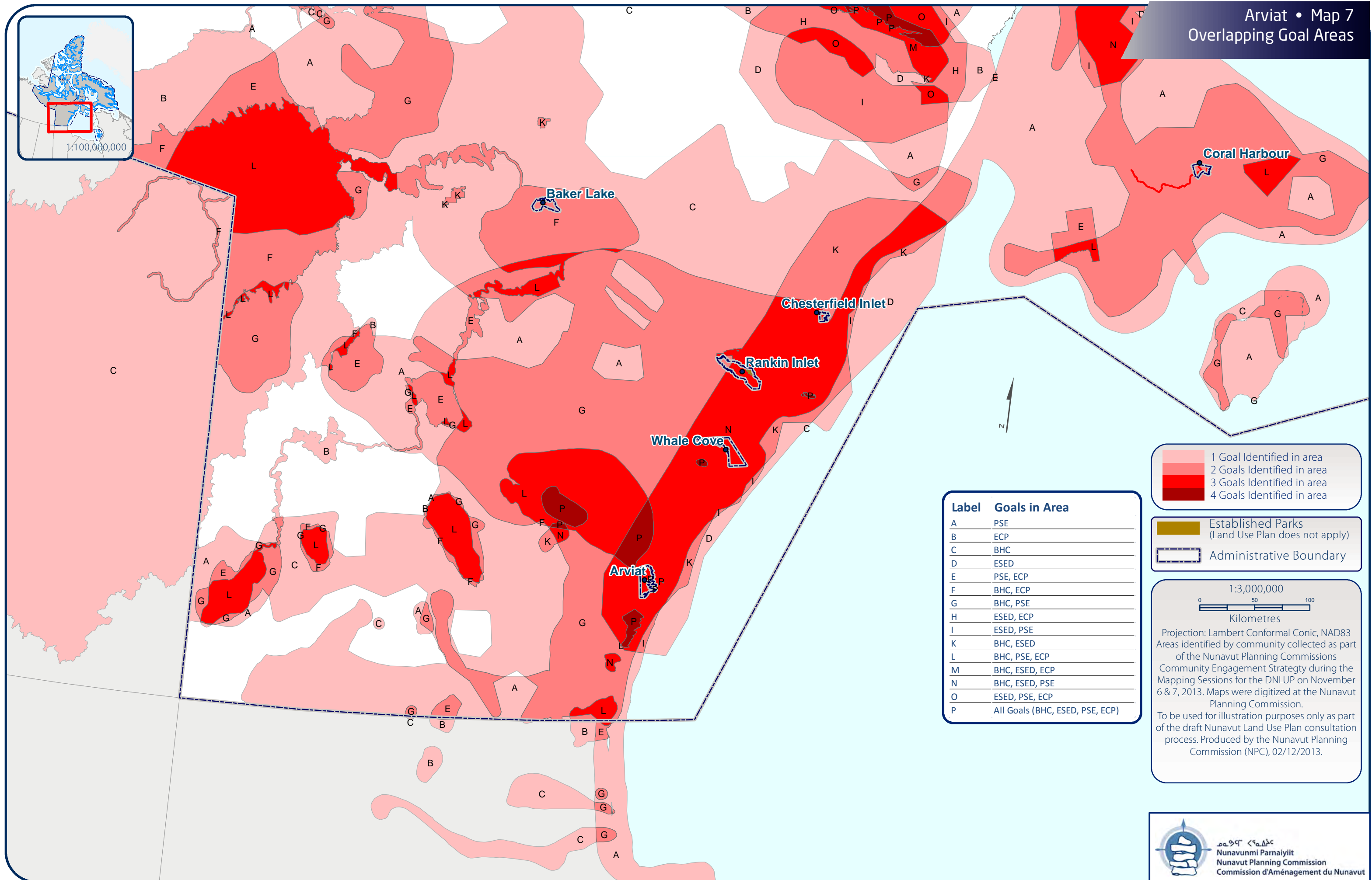
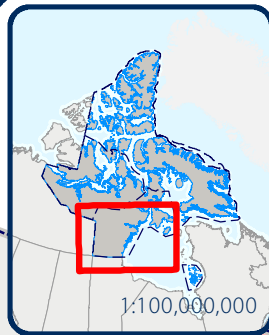


Projection: Canada Lambert Conformal Conic, NAD83
Produced by the Nunavut Planning Commission: (867) 983-4625, npc@nunavut.ca
December-09-13

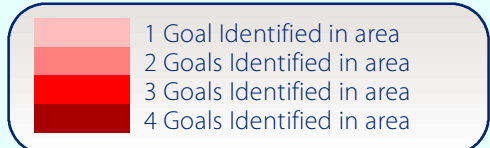
7.1 Areas identified for multiple goals

All areas discussed with the community as important for a particular goal are shown on Map 7. In some instances, areas have been identified as important for multiple goals. These areas, and the specific goals they are important to, are also shown on Map 7. In these areas, the NPC will take all of the identified goals and all other feedback into consideration when revising the DNLUP.





| Label | Goals in Area |
|-------|---------------------------------|
| A | PSE |
| B | ECP |
| C | BHC |
| D | ESED |
| E | PSE, ECP |
| F | BHC, ECP |
| G | BHC, PSE |
| H | ESED, ECP |
| I | ESED, PSE |
| K | BHC, ESED |
| L | BHC, PSE, ECP |
| M | BHC, ESED, ECP |
| N | BHC, ESED, PSE |
| O | ESED, PSE, ECP |
| P | All Goals (BHC, ESED, PSE, ECP) |



1:3,000,000

0 50 100
Kilometres

Projection: Lambert Conformal Conic, NAD83
Areas identified by community collected as part of the Nunavut Planning Commissions Community Engagement Strategy during the Mapping Sessions for the DNLUP on November 6 & 7, 2013. Maps were digitized at the Nunavut Planning Commission.

To be used for illustration purposes only as part of the draft Nunavut Land Use Plan consultation process. Produced by the Nunavut Planning Commission (NPC), 02/12/2013.

Appendix 1: Open House

During the open house, participants raised the following issues:

- Sandy Point is important for hunting and fishing. Whales come from south (Churchill – Beluga). Lots of Arctic Char.
- Quite a few seals using all of the points of land. Ring seals.
- Beluga in July and August. In September they go back south.
- Lots of foxes – pelts worth \$25-30. Some guys go hunting for wolves in trees in March and April.
- In June we get Canada Geese and other birds from the south.



Appendix 2: Elected Officials Meeting

The elected officials meeting was attended by the Mayor and members of the Hamlet Council and HTO. During the meeting, participants raised the following issues:

- Committee has a concern about particular areas around McConnell River Bird Sanctuary area. We are concerned about this area. Regulations have been in place for a long time but we have asked CWS to be part of our group.
- We are concerned about development in calving grounds. The calving grounds are being used and we have to be careful about what we permit.



Appendix 3: Community Workshop Scanned Maps

Two groups completed the mapping session to identify important areas. This Appendix contains the maps that were used by participants to identify areas that are important to the following land use planning goals:

- Protecting and Sustaining the Environment
- Encouraging Conservation Planning
- Building Healthier Communities
- Encouraging Sustainable Economic Development
- Mixed Use

Also included on each map is a reference table that includes the specific values that were identified for the area.

Note: The documented comments for Group 1 were not verified with an audio recording.

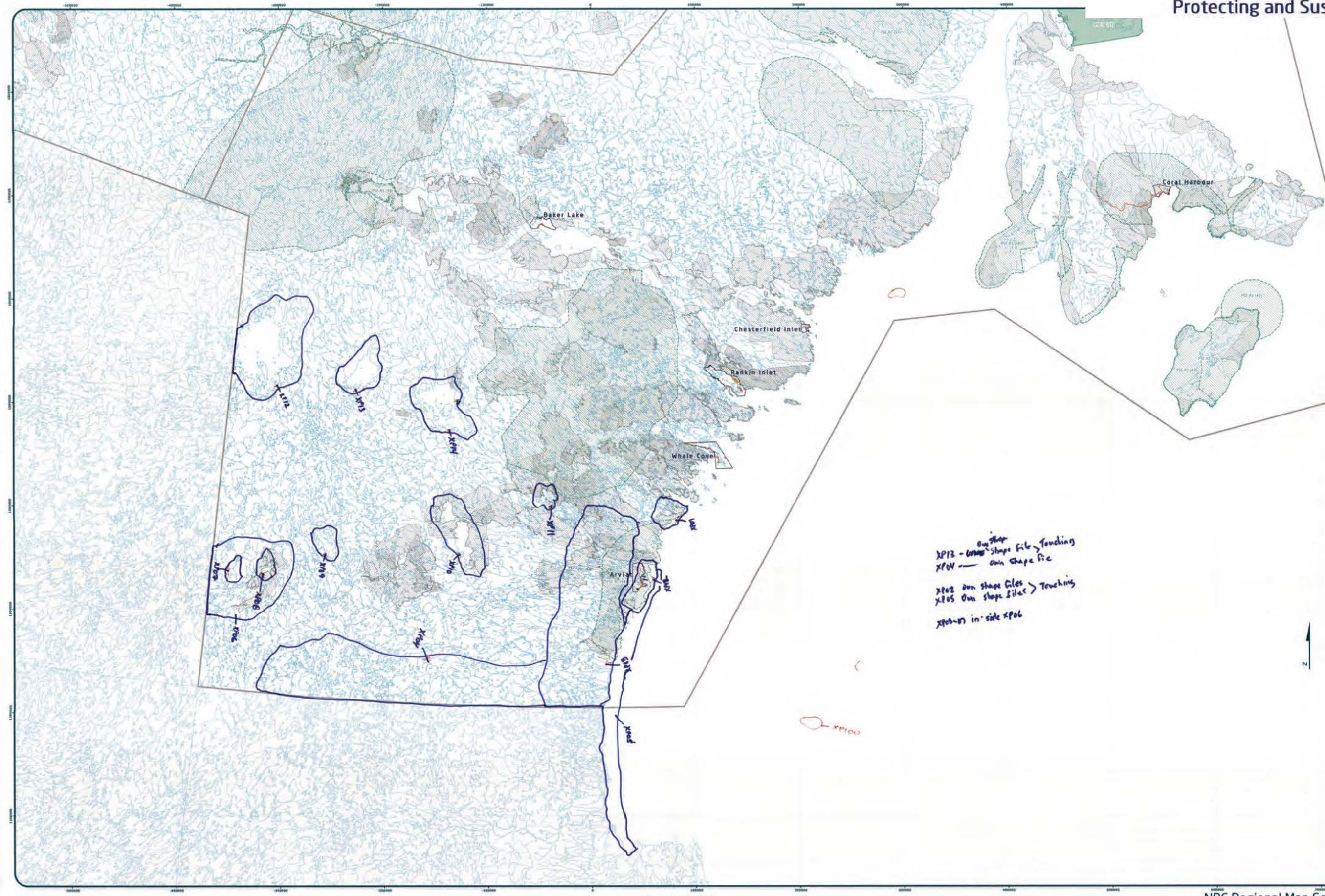
During the mapping portion of the community workshop, the following concerns were raised that did not apply to a specific area that was identified on the maps:

- Path of caribou when migrating needs to be identified.
- We missed out on McConnell River Bird Sanctuary. Reference to Article 8 of NLCA. We formed committee to keep an eye on the proposed happenings. We talked about what we should protect. Economic reasons - Tourism. People are interested in respect to bird watchers. It is a protected area. Small place and important for community to make money out of. A lot of Polar Bears for tourists to see. Because it is important, we formed a committee. Committee will enhance it. Also regarding traditional campsites.
- Used to be sod houses around Arviat but all torn down now.
- Historically travelled to Manitoba to hunt.
- From Arviat to Marble Island people usually hunt seals & beluga, these 3 rivers in between we do net fishing,

and all the way up to Nunalaq we can catch arctic char and seals, beluga whales. It's all marked on the BHC map.

- Economic activities are important.

Arviat - Group 1 Results Protecting and Sustaining the Environment



| Designations | Permitted Uses | Prohibited Uses |
|--------------|--------------------------------|-----------------|
| XP01 | Small, medium, and large scale | All other uses |
| XP02 | Small, medium, and large scale | All other uses |
| XP03 | Small, medium, and large scale | All other uses |

| Code | Comments |
|------|---|
| XP01 | Sandy Point, a good area for Arctic Char |
| XP02 | Bird Sanctuary |
| XP03 | Caribou in the summer time, up from Churchill |
| XP04 | Caribou, wolves all kinds of wildlife. Travelling back and forth from Churchill, used to chase and sell wolf hide and fox hide. When the stores ran out we moved to Arviat. |
| XP05 | From Churchill down to Arviat seals in this area, whales as well, smaller ones. |
| XP06 | Lots of trout, fish and wolves |
| XP07 | Fish and wolves in the area, caribou as well. |
| XP08 | In the spring there are a lot of caribou |
| XP09 | Lots of fish and caribou and even wolves in spring and summer time. I grew up in Ennadai Lake and lots of caribou there in the spring. There used to be so many caribou you could throw a rock at them. |
| XP10 | Lots of fish in this area |
| XP11 | Lots of fish in this area, all year round. |
| XP12 | Lots of fish around those lakes |
| XP13 | Lots of fish in the area |
| XP14 | Lots of fish in this area |

| Code | Comments |
|------|---|
| XP01 | Sandy Point, a good area for Arctic Char |
| XP02 | Bird Sanctuary |
| XP03 | Caribou in the summer time, up from Churchill |
| XP04 | Caribou, wolves all kinds of wildlife. Travelling back and forth from Churchill, used to chase and sell wolf hide and fox hide. When the stores ran out we moved to Arviat. |
| XP05 | From Churchill down to Arviat seals in this area, whales as well, smaller ones. |
| XP06 | Lots of trout, fish and wolves |
| XP07 | Fish and wolves in the area, caribou as well. |
| XP08 | In the spring there are a lot of caribou |
| XP09 | Lots of fish and caribou and even wolves in spring and summer time. I grew up in Ennadai Lake and lots of caribou there in the spring. There used to be so many caribou you could throw a rock at them. |
| XP10 | Lots of fish in this area |
| XP11 | Lots of fish in this area, all year round. |
| XP12 | Lots of fish around those lakes |
| XP13 | Lots of fish in the area |
| XP14 | Lots of fish in this area |

| | |
|----|----|
| 1 | 28 |
| 2 | 28 |
| 3 | 28 |
| 4 | 28 |
| 5 | 28 |
| 6 | 28 |
| 7 | 28 |
| 8 | 28 |
| 9 | 28 |
| 10 | 28 |
| 11 | 28 |
| 12 | 28 |
| 13 | 28 |
| 14 | 28 |
| 15 | 28 |

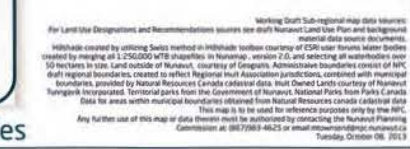
Signature of Mapper

Coordinate System: EPSG:42104 LCC
Projection: Lambert Conformal Conic
Datum: North American 1983
False Easting: 0.0000
False Northing: 0.0000
Central Meridian: -95.0000
Standard Parallel 1: 49.0000
Standard Parallel 2: 77.0000
Latitude Of Origin: 49.0000
Units: Meter

For Land Use Designations and Recommendations sources see Draft Nunavut Land Use Plan and background map of Nunavut. The map was created by merging all 1:250,000 scale maps in Nunavut, version 2.0, and removing all water bodies. The map was created by merging all 1:250,000 scale maps in Nunavut, version 2.0, and removing all water bodies. The map was created by merging all 1:250,000 scale maps in Nunavut, version 2.0, and removing all water bodies.



NPC Regional Map Series






| Reference Table for Recommendations | |
|-------------------------------------|---|
| Education | Project Proposal awarded in a key field relative to strategic goals and mission, and/or in the organization's field of work, and/or area of expertise |
| Research | Project Proposal awarded in a key field relative to strategic goals and mission, and/or in the organization's field of work, and/or area of expertise |
| Other | Project Proposal awarded in a key field relative to strategic goals and mission, and/or in the organization's field of work, and/or area of expertise |

[illegible]

Any further use of this map or data therein must be authorized by contacting the Nevada Parks Commission at (702) 785-4625 or info@nvaparks.com.

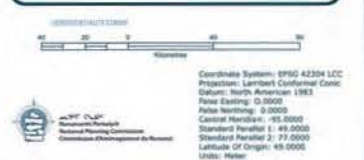


| Designation | Permitted User | Prohibited User |
|-------------|--------------------------|-----------------|
| Full | Human Resources Research | Adverse Case |
| Partial | Human Resources Research | |

Reference Table for Recommendations

| Designation | Permitted User | Prohibited User |
|-------------|--------------------------|-----------------|
| Full | Human Resources Research | Adverse Case |
| Partial | Human Resources Research | |

| Code | Comments |
|------|--|
| XC15 | Old traditional camp in this area |
| XC16 | Alot of people used these areas for camping |
| XC17 | Gasket Lake - important camping ground where people used to live. Somewhere in here there used to be alot of fish. |
| XC18 | Camping ground. There used to be a mining port here. |
| XC19 | Henik Lake, fish in this area. |
| XC20 | Hicks Lake where lots of caribou and where there is a camp to hunt and fish. |
| XC21 | Kummick Lake, camping ground in this area. |

[illegible]

For Land Use Designations and Recommendations sources see draft NRMU map. Land Use Plan and background information see draft NRMU map. E-mail: info@nrmu.org or info@nrmu.org

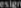





Habitat created by utilizing Swiss mastic in Hahneville located northwest of ESI area forms water bodies managed by Ingersoll at 1250000 MTR. Habitages in Hahneville located northwest of ESI area forms water bodies managed by Ingersoll at 1250000 MTR. Habitages in Hahneville located northwest of ESI area forms water bodies managed by Ingersoll at 1250000 MTR.

100 hectares in size. Land owned of Nunavut, country of Canada. Administrative boundaries consist of NRC staff regional boundaries, created to reflect Regional Inter-Association projects, combined with municipal boundaries, provided by Natural Resources Canada. This map is not to be used for other purposes without the written permission of the Nunavut Government. Territorial parks from the Government of Nunavut, National Parks from Parks Canada. Data for areas within municipal boundaries obtained from Natural Resources Canada (Canada data) and the Government of Nunavut (Nunavut data).

Any further use of this map or data therein must be authorized by contacting the Nunavut Mapping Commission at (867)708-4423 or info@nrmu.org or info@nrmu.org

Nunavut Government, 2018



| Designations | Permitted Uses | Prohibited Uses |
|---|----------------------------|-----------------|
|    | Search, Microsoft, Windows | All Other Uses |
|    | Search, Windows, Windows | |

Orange Arrow: Not Recommended

Reference Table for Recommendations

Note: Product should be used only when the product is used in the following manner:

| Code | Comments |
|------|---|
| XC14 | Traditional camp sites in this area, Artifact because people hunted in this area. |
| XC15 | Hunting grounds - camp site. Trapping for many days all the way to ?Tanaulac? |
| XC16 | This is my childhood trapping area, historic (elder) |
| XC17 | Also trapping in this area, historic (elder) |
| XC18 | Fishing in the spring, historic (elder) |

[illegible]

Generalizing from the above, we can state that the *Generalizing from the Above* (GFA) heuristic is:

Community: AT
 Location: _____
 Region: _____
 Date: 2/10/16, 2013
 Community HSA: _____
 Map #: 2/2

TD/MT

Signatures of the Community (signify as permitted)

1. _____
2. _____
3. _____
4. _____
5. _____
6. _____
16. _____
17. _____
18. _____
19. _____
20. _____
21. _____

| | | | |
|-----|--|-----|--|
| 7. | | 32. | |
| 8. | | 33. | |
| 9. | | 34. | |
| 10. | | 35. | |
| 11. | | 36. | |
| 12. | | 37. | |
| 13. | | 38. | |
| 14. | | 39. | |

Signature of Mapper _____

Coordinate System: EPSG 42304 LCC
Datum: North American 1983
Units: Feet
Scale Factor: 1.0000000000000000
False Easting: 1600000.0000000000
False Northing: 1600000.0000000000
Units: Feet
Scale Factor: 1.0000000000000000
False Easting: 1600000.0000000000
False Northing: 1600000.0000000000


 ۛۛۛۛۛ ۛۛۛۛۛ
 National Planning Commission
 Contribution to Development of the Network

Working Draft: Sub-regional map data sources:
For Land Use Designations and Reclamations sources see draft Nunavut Land Use Plan and background material/data source documents.
Hillshade created by utilizing Swiss method in Hillshade toolset courtesy of ESRI user forums Water bodies created by merging at 2,250,000 NTS shapefiles in Nunavut - version 2.0, and selecting all waterbodies over 50 hectares in size. Land outside of Nunavut - courtesy of Geogates. Administrative boundaries consist of NICT (half regional boundaries, created to reflect Regional Health Association jurisdictions, combined with municipal boundaries, provided by Natural Resources Canada) (all other land is the General Land courtesy of Nunavut Government). Information from the Nunavut Land Use Plan.

Arviat - Group 3 Results

Encouraging Conservation Planning



| Designations | Permitted Uses | Prohibited Uses |
|--------------|-------------------------------|-----------------|
| ECF-1 | Tourism, Recreation, Research | All Other Uses |
| ECF-2 | Tourism, Recreation, Research | |


ECF Recommendation:

Reference Table for Recommendations

| | |
|-------|---|
| ECF-1 | Project Proposals located in and/or near a Heritage River should take into account the guidelines and criteria contained in the Heritage River's management plan. |
|-------|---|

| Code | Comments |
|------|--|
| XC10 | Sod House at the Old Trading Post at Padlei. Old trading post (closed in 1959) and old sod house church |
| XC11 | Travel back and forth between XC11 and XC12 to follow caribou. Caribou migration area. |
| XC12 | Caribou migration area. |
| XC13 | Old trading post at Nunalaq. |
| XC14 | Whaling Plant and Hudson's Bay old post. Also the area people used to live before moved to Arviat and Whale Cove. There was also a Roman Catholic church here. Used to be called Tavani. |
| XC15 | Old school and Alliance church at mouth of Maguse River. Historic area. We were sent to school there. |
| XC16 | Historic caribou migration route and camp sites as people follow the caribou |

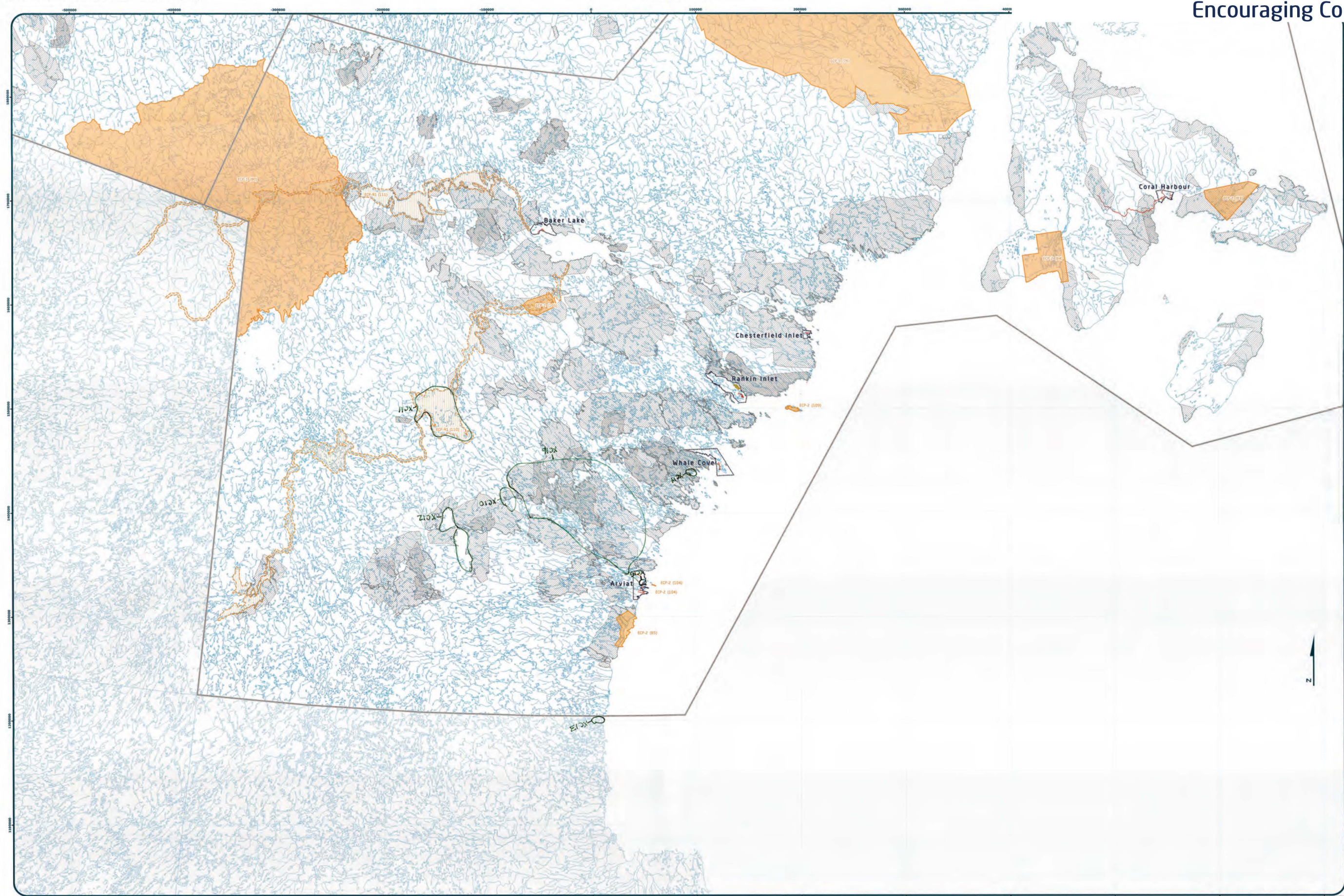
[illegible]


 Coordinate System: EPSG 42304 LCC
 Projection: Lambert Conformal Conic
 Datum: North American 1983
 False Easting: 0.0000
 False Northing: 0.0000
 Central Meridian: -95.0000
 Standard Parallel 1: 49.0000
 Standard Parallel 2: 77.0000
 Latitude Of Origin: 49.0000
 Units: Meter

Working Draft-SW-regional map data sources:
 For Land Use Designations and Recommendations source see draft Nunavut Land Use and background
 map data sources document.
 Hillshade created by utilizing Swiss method in Hillshade toolbox (copyrighted by ESRI) using water bodies
 created by merging all 1:250,000 scale maps in Nunavut from Natural Resources Canada's 1:250,000
 scale maps. Land use designations are based on the Nunavut Land Use Designations Act and the
 50 regional plans. Land outside of Nunavut, copyright of Geography of Geography. Administrative boundaries of NRC
 SW regional boundaries, created to reflect Regional Inuit Association jurisdictions, combined with municipal
 boundaries from Natural Resources Canada's 1:250,000 scale maps.
 Nunavut Government. Territorial parks from the Government of Nunavut. National Parks from Parks Canada
 data.
 Data for areas within municipal boundaries obtained from Natural Resources Canada's cadastral data
 files.
 Any further use of this map or data therein must be authorized by contacting the Nunavut Planning
 Commission at: (867)793-4625 or email munip@nunavut.ca
 Wednesday, October 09, 2013



Scale 1:1,000,000

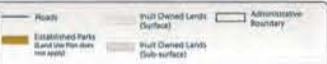
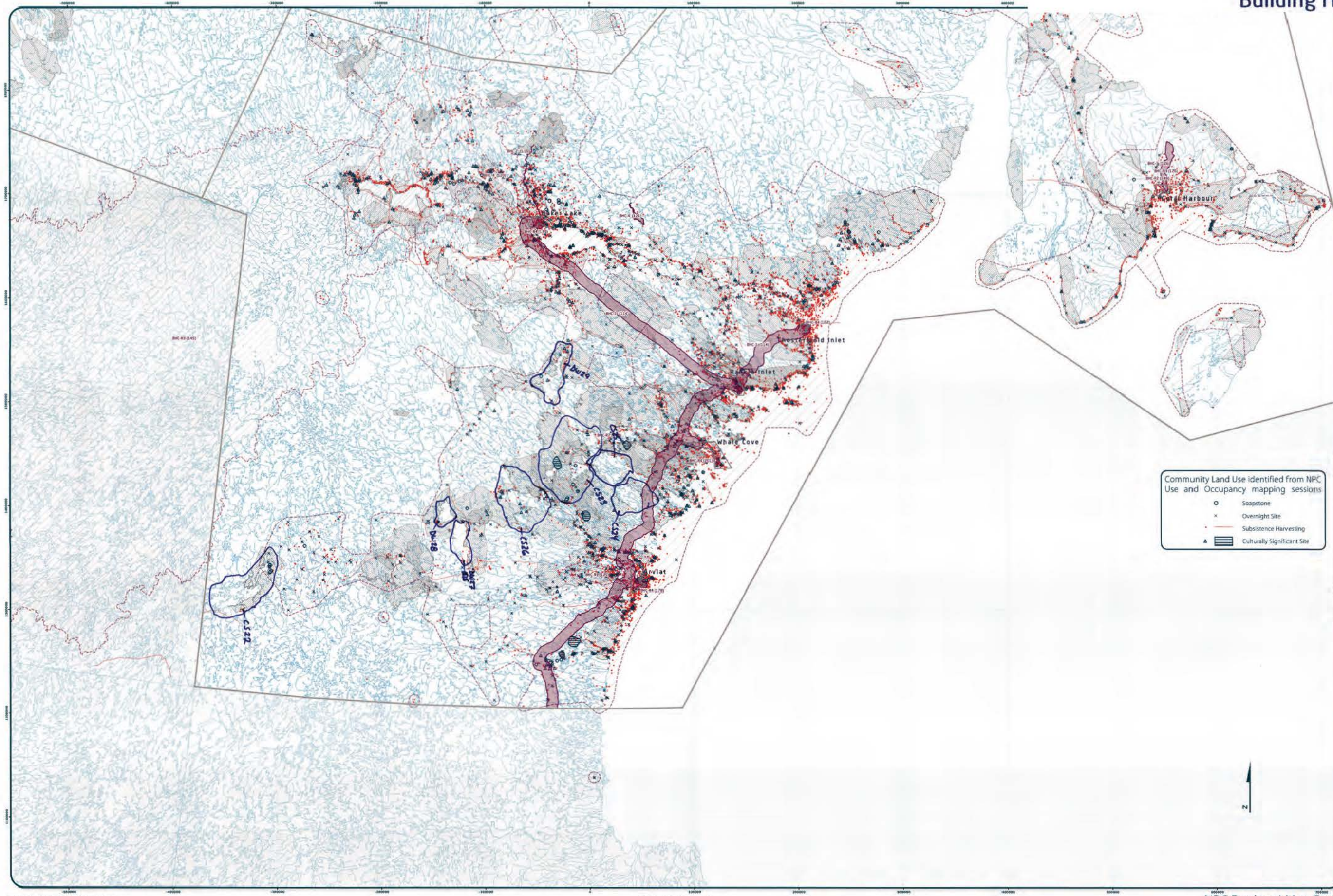


SOUTH-CENTRAL KIVALLIQ

Scale 1:1,000,000

600000 700000
NPC Regional Map Series

Arviat - Group 1 Results
Building Healthier Communities



| Designations | Permitted Uses | Prohibited Uses |
|--------------|---|-----------------|
| BHC-1 | Roads, Railways, Utilities and Corridors | |
| BHC-2 | Roads, Railways, Utilities and Corridors | |
| BHC-3 | All uses except those prohibited | Mining |
| BHC-4 | Hydro-electric and related infrastructure | |
| BHC-5 | Tourism, Recreation and Research | |
| BHC-6 | Municipal Services | All Other Uses |
| BHC-7 | Municipal Services | All Other Uses |
| BHC-8 | Remediation and Rehabilitation Activities | All Other Uses |
| BHC-9 | Remediation and Rehabilitation Activities | All Other Uses |
| BHC-10 | Oil and Gas Operations and Activities | All Other Uses |

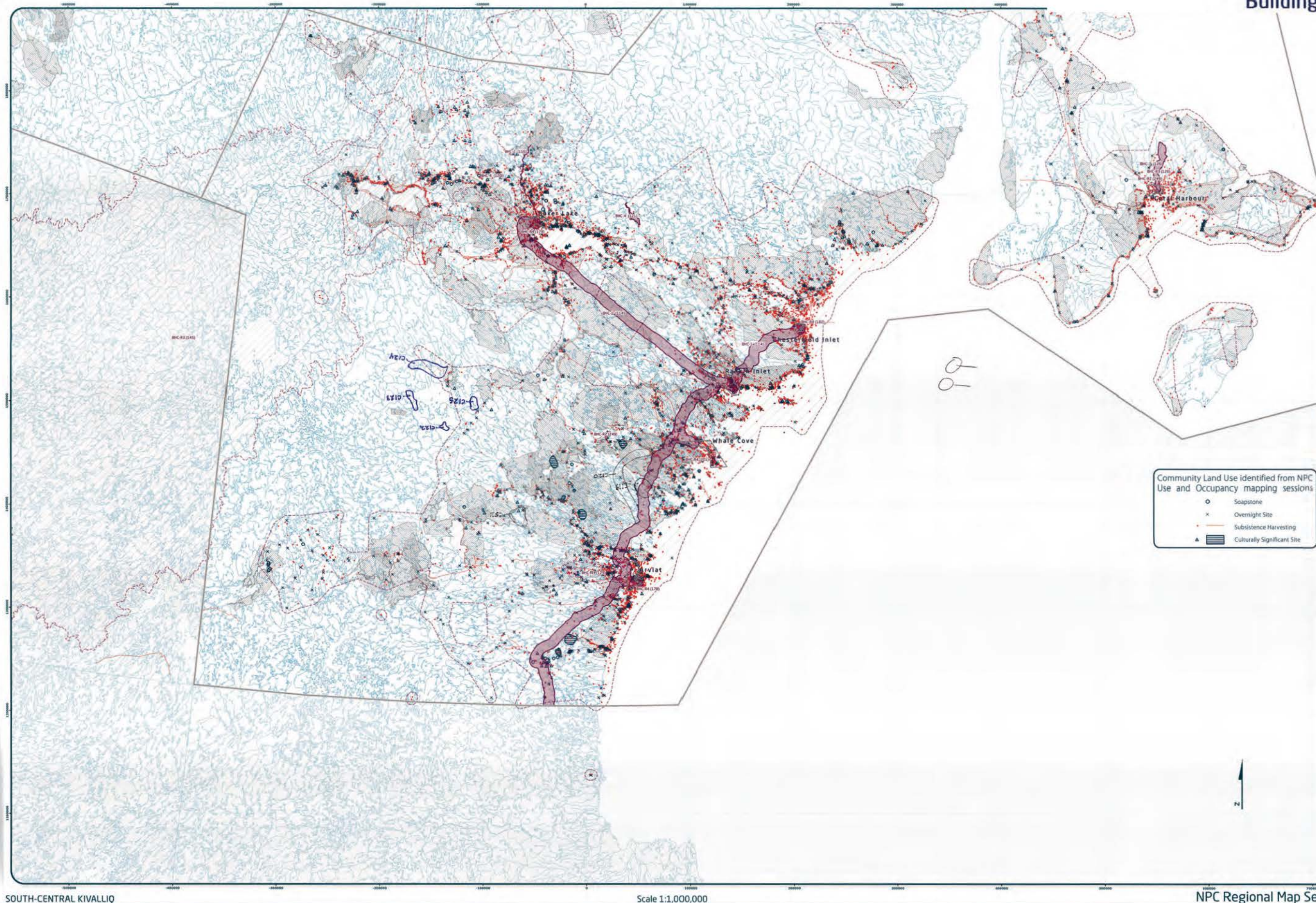
| Code | Comments |
|------|---|
| CS22 | Clean up work underway |
| CS23 | Used to be a mine and needs to be cleaned up. It was a USA company and there used to be a port too. |
| CS24 | Old mining camp that needs cleaning up |
| CS25 | Mining camp that needs cleaning up. They were camping grounds before. |
| CS26 | Lots of camping in this area, mining camps in the area. A lot of mining camps but they have English names (can't remember them) In and around these places you see old drill pipes. Used to be a mining camp. |
| DW27 | All the big lakes have fresh water. |
| DW28 | Fresh water. Carr Lake has fresh drinking water - is very deep. |
| DW29 | Clear water for drinking. |

Community Land Use identified from NPC Use and Occupancy mapping sessions

- Soapstone
- × Overnight Site
- Subsistence Harvesting
- ▲ Culturally Significant Site

| Code | Comments |
|------|---|
| CS22 | Clean up work underway |
| CS23 | Used to be a mine and needs to be cleaned up. It was a USA company and there used to be a port too. |
| CS24 | Old mining camp that needs cleaning up |
| CS25 | Mining camp that needs cleaning up. They were camping grounds before. |
| CS26 | Lots of camping in this area, mining camps in the area. A lot of mining camps but they have English names (can't remember them) In and around these places you see old drill pipes. Used to be a mining camp. |
| DW27 | All the big lakes have fresh water. |
| DW28 | Fresh water. Carr Lake has fresh drinking water - is very deep. |
| DW29 | Clear water for drinking. |

Working Draft Sub-regional map data sources:
For Land Use Designations and Recommendations sources see the Nunavut Land Use Plan and Background Information documents.
Use and Occupancy data from NPC Use and Occupancy mapping sessions, 2004 to 2011.
Historical data from various sources including the Nunavut Land Use Plan and Background Information documents.
Data for areas within municipal boundaries obtained from Municipal Resource Units (MRUs).
Data for areas outside of municipal boundaries obtained from the Nunavut Land Use Plan and Background Information documents.
Data for areas within municipal boundaries obtained from Municipal Resource Units (MRUs).
Data for areas outside of municipal boundaries obtained from the Nunavut Land Use Plan and Background Information documents.

Arviat - Group 2 Results
Building Healthier Communities

| Designations | Permitted Uses | Prohibited Uses |
|--------------|---|-----------------|
| BHC-1 | Roads, Railways, Utilities and Corridors | |
| BHC-2 | Roads, Railways, Utilities and Corridors | |
| BHC-3 | All uses except those Prohibited | Mineral |
| BHC-4 | Hydro electrical and related infrastructure | |
| BHC-5 | Tourism, Recreation and Research, Municipal Services | |
| BHC-6 | Municipal Services | All Other uses |
| BHC-7 | Remediation and Reclamation Activities | All Other uses |
| BHC-8 | Remediation and Reclamation Activities, DND Operations and Activities | All Other uses |
| BHC-9 | DND Operations and Activities | All Other uses |

Reference Table for Recommendations

| | |
|-------|---|
| BHC-1 | Project Proposals located in the Wharfedale River Area of Interest should take into account impacts on the cultural value of the area. |
| BHC-2 | Project Proposals located in areas of traditional land use should take into account impacts on the cultural value of the area. |
| BHC-3 | Project Proposals located in a community water supply watershed should take into account impacts on the quality and quantity of community drinking water. |
| BHC-4 | Project Proposals located in a municipal Aerodrome should take into account impacts on aerodrome safety. |

| Code | Comments |
|------|--|
| CI19 | Looks like road is going right through fishing area - very important area, do not let road go through this area. Critical area, move road boundary |
| CI20 | Move road to west and inland - preferred route for Manitoba Road |
| CI21 | There are old exploration camps that need to be cleaned up. Contaminated area. |
| CI22 | Archaeological site - people used to go there to get healing. Ancient worship. |
| CI23 | Lots of artifacts |
| CI24 | Artifacts and old campsites |
| CI25 | Sodhouse made of stone. Giants - big people. If activities start in this area the community would want to know. |

Community Name: Arviat

Region: Arviat

Community ID: 710/101

Map Scale: 1:1,000,000

Signatures of the Community Agency or its representatives:

1. _____ 16. _____

2. _____ 17. _____

3. _____ 18. _____

4. _____ 19. _____

5. _____ 20. _____

6. _____ 21. _____

7. _____ 22. _____

8. _____ 23. _____

9. _____ 24. _____

10. _____ 25. _____

11. _____ 26. _____

12. _____ 27. _____

13. _____ 28. _____

14. _____ 29. _____

15. _____ 30. _____

Signature of Mapper: _____

Coordinate System: EPSG 42304 UTM
Projection: Lambert Conformal Conic
Datum: North American 1983
False Easting: 500000
Central Meridian: -65.0000
Standard Parallel 1: 49.0000
Standard Parallel 2: 77.0000
Latitude of Origin: 69.0000
Units: Meter

Mapping Draft Sub-regional map data sources:
For Land Use Designations and Recommendations sources see Draft Nunavut Land Use Plan and Background
Use and Occupancy data from NPC Use and Occupancy mapping sessions, 2004 to 2013
Material data source documents
Map data created by using Swiss method in Heliophote software courtesy of ESRU user forum letter bodies
created by merging all 1:250,000 scale maps in Nunavut, version 2.0, and selecting all waterbodies over
50 hectares in size. Land outside of Nunavut, courtesy of Geomatics, Administrative boundaries courtesy of NPC
draft regional boundaries, courtesy of Regional Health Association jurisdictions, combined with municipal
boundaries, provided by Natural Resources Canada cadastre data. Inuit Owned Lands courtesy of Nunavut
Territory Incorporated. Territorial parts from the Government of Nunavut, National Parks from Parks Canada
Data for areas within municipal boundaries obtained from Natural Resources Canada cadastre data
This map is to be used for reference purposes only by the NPC
Any further use of this map or data therein must be authorized by contacting the Nunavut Planning
Commission at (867) 963-4623 or email: npc@nunavut.ca
Wednesday, October 09, 2013



- * DW 23 Drinking source is at North of Animal Band of Inquisition to Sea.
- * CS 25 a note that this is not to be taken to Sea, located at North of Whale Cove
- * DW 21 darken the line
- * DW 19 darken the line
- * DW 20 darken the line
- * DW 17 darken the line
- * DW 24 darken the line



| Designations | Permitted Uses | Prohibited Uses |
|--|---|-----------------|
| 1. Executive Director | Moving, Reversing and Reconstructive, Raising, Raising, Lowering and Carrying | |
| 2. Assistant Executive Director | 3D and 4D Reversing and Reconstructive Raising | |
| 3. Senior Director | | |

Reference Table for Recommendations

| Designation | Permitted Uses | Prohibited Uses |
|--|---|-----------------|
| 1. Executive Director | Moving, Reversing and Reconstructive, Raising, Raising, Lowering and Carrying | |
| 2. Assistant Executive Director | 3D and 4D Reversing and Reconstructive Raising | |
| 3. Senior Director | | |

| Code | Comments |
|------|--|
| XD30 | Sports fishing. |
| XD31 | Sports fishing and hunting in this area. |
| XD32 | Not that hard to travel around the tree line. So if looking at a project in this area it's not that hard. There is a lot of fishing potential in this area, anywhere along the Hudson bay coast can find seals or whales. |
| XD33 | Along these areas there are a lot of seals in this area, Seal hunting in this area and caribou. |
| XD34 | Fishing and sports hunting in Henik Lake |

This image shows a single sheet of white paper with horizontal blue or grey ruling lines. The lines are evenly spaced and run across the width of the page. There is no handwriting or other markings on the paper.

Resident Planning Information:
Completed by: _____
Contact: _____
E-mail: _____

Community: _____
Location: _____
Region: _____
Date: _____
Community Prior: _____
Map # _____

Signatures of the Community clearly in permission

Score to conduct mapping exercise as informant.

| | | | |
|-----|-------|-----|-------|
| 1. | _____ | 26. | _____ |
| 2. | _____ | 27. | _____ |
| 3. | _____ | 28. | _____ |
| 4. | _____ | 29. | _____ |
| 5. | _____ | 30. | _____ |
| 6. | _____ | 31. | _____ |
| 7. | _____ | 32. | _____ |
| 8. | _____ | 33. | _____ |
| 9. | _____ | 34. | _____ |
| 10. | _____ | 35. | _____ |
| 11. | _____ | 36. | _____ |
| 12. | _____ | 37. | _____ |
| 13. | _____ | 38. | _____ |
| 14. | _____ | 39. | _____ |

15. _____

Signature of Mapper: _____



Coordinate System: EPSG 42304
Projection: Lambert Conformal Conic
Datum: North American 1983
False Easting: 0.0000
False Northing: 0.0000
Central Meridian: -95.0000
Standard Parallel 1: 49.0000
Standard Parallel 2: 77.0000
Latitude Of Origin: 49.0000

For Land Use Designations and Recommendations sources see draft Nunavut Land Use Plan and the Nunavut Land Use Assessment Commission website

Arviat - Group 2 Results



| Code | Comments |
|------|--|
| MU26 | Traditional campsites, whale catching, nets, both the land and the sea. Already group looking after it under CWS committee. It is protected bird area but people still go there to hunt. |

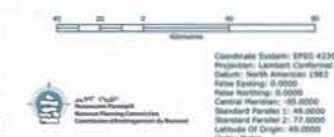
This image shows a single sheet of white paper with horizontal blue or grey ruling lines. The lines are evenly spaced and run across the width of the page. On the left side, there is a vertical margin line, creating a narrow left margin. The paper appears to be from a notebook or a standard composition book. There is no handwriting or other markings on the page.

National Farming of Community
University Association "Pau"
and The Shipping Service

| | | |
|--|-------------------|-----|
| Community: | <u>AT</u> | |
| Location: | <u></u> | |
| Region: | <u>FRENCH SWA</u> | |
| Postal #: | <u>75</u> | |
| Community POC: | <u></u> | |
| Name: | <u></u> | |
| Signatures of the Community entity as permitted | | |
| to be a contact in shipping services informants. | | |
| 1. | <u></u> | 26. |
| 2. | <u></u> | 27. |
| 3. | <u></u> | 28. |
| 4. | <u></u> | 29. |
| 5. | <u></u> | 30. |
| 6. | <u></u> | 31. |
| 7. | <u></u> | 32. |
| 8. | <u></u> | 33. |
| 9. | <u></u> | 34. |
| 10. | <u></u> | 35. |
| 11. | <u></u> | 36. |
| 12. | <u></u> | 37. |
| 13. | <u></u> | 38. |
| 14. | <u></u> | 39. |
| 15. | <u></u> | 40. |

Signature of Shipper:

(continued on page 2)

[illegible]

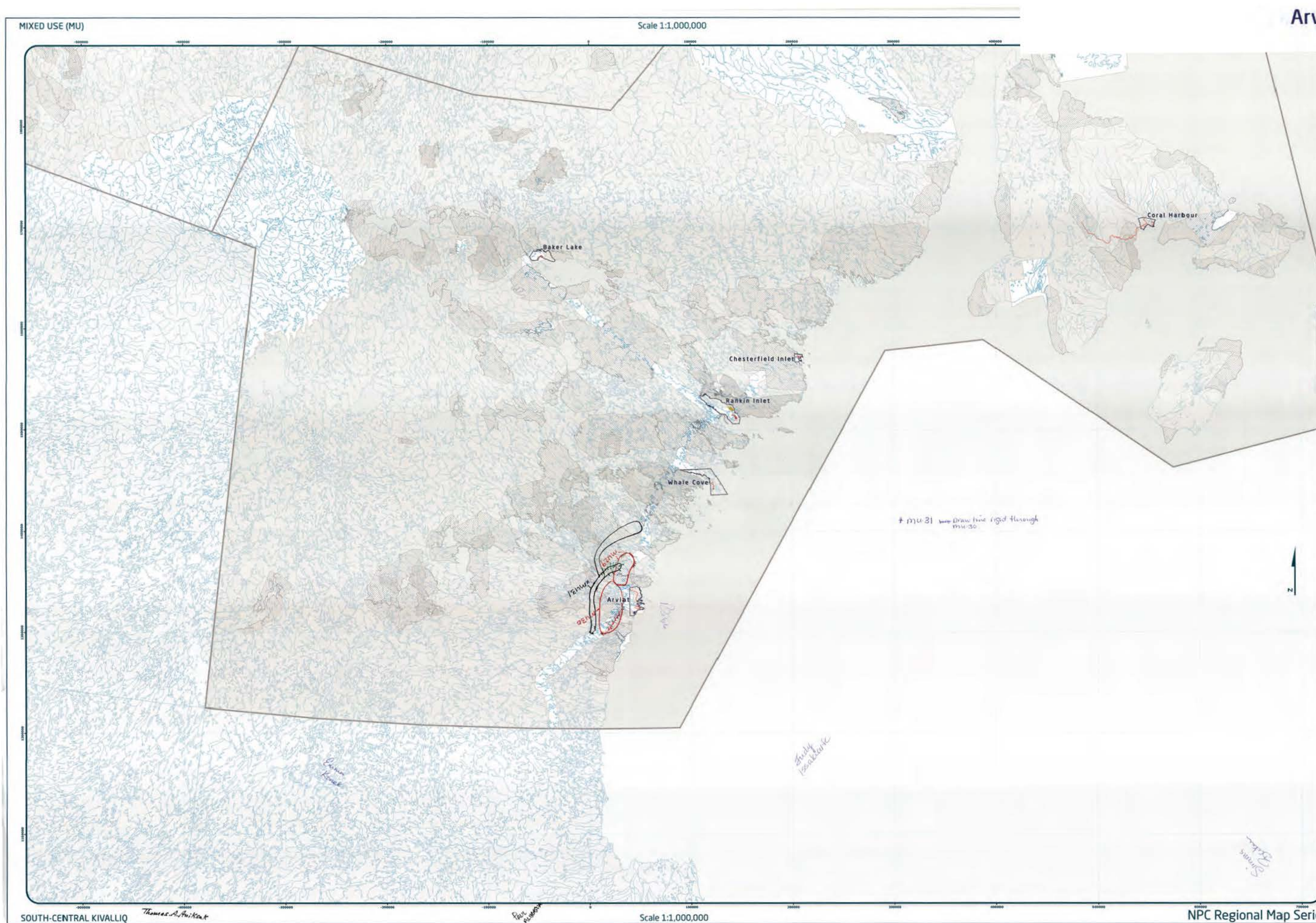


| Code | Comments |
|------|---|
| MU29 | Protect for caribou |
| MU30 | Caribou route here. Don't want road or anything developed in the area around Arviat. Want the road to go around and use a trail that's already there. Protect area around Arviat. |
| MU31 | Preferred route for road |

[illegible]


 BNGC
 Bureau National de Géomatics et Cartographie
 National Planning Commission
 Commission d'Aménagement du National

Coordinate System: EPSG 42304 LCC
 Projection: Lambert Conformal Conic
 Datum: North American 1983
 False Easting: 0.0000
 False Northing: 0.0000
 Central Meridian: -95.0000
 Standard Parallel 1: 49.0000
 Standard Parallel 2: 77.0000
 Latitude Of Origin: 49.0000

[illegible]

Appendix 4: Follow-up Meeting

The NPC returned to the community and reviewed a draft version of this report with the Hamlet Council, Hunters and Trappers Organization, and the Community Lands and Resource Committee. The meeting included:

- A presentation of a draft version of this report
- An overview of the mapped information that was recorded for each topic:
 - Protecting and Sustaining the Environment
 - Encouraging Conservation Planning
 - Building Healthier Communities
 - Encouraging Sustainable Economic Development
 - Mixed Use
- General discussion and comments including:
 - Opportunities to provide additional comments.
 - Discussion regarding ESED Map, Group 1, XD 33 – Comment regarding inland seals. Participants thought it could be an error, but staff later confirmed that there are inland seals in the area.