

Summary of Community Meetings on the  
Draft Nunavut Land Use Plan  
GJOA HAVEN  
March 24, 2014



Nunavut Planning  
Commission



Revised - May 2014



# Contents

Introduction .....	3	Appendix 1: Elected Officials Meeting.....	17
1.1 Context .....	3	Appendix 2: Questions and Answers .....	18
1.2 Purpose.....	3	Appendix 3: Community Workshop Scanned Maps.....	19
1.3 Methodology.....	3	Appendix 4: Follow-up Meeting.....	29
1.4 Public Awareness .....	3		
1.5 Community Population and Participation.....	3		
 Protecting and Sustaining the Environment.....	4		
2.1 Areas presented to participants.....	4		
2.2 Areas identified by participants .....	4		
2.3 Areas of importance to Protecting and Sustaining the Environment..	4		
 Encouraging Conservation Planning.....	6		
3.1 Areas presented to participants .....	6		
3.2 Areas identified by participants .....	6		
3.3 Areas of importance to Encouraging Conservation Planning .....	6		
 Building Healthier Communities .....	8		
4.1 Areas presented to participants.....	8		
4.2 Areas identified by participants.....	8		
4.3 Areas of importance to Building Healthier Communities .....	8		
 Encouraging Sustainable Economic Development .....	10		
5.1 Areas presented to participants.....	10		
5.2 Areas identified by participants.....	10		
5.3 Areas of importance to Encouraging Sustainable Economic Development .....	10		
 Mixed Use.....	12		
6.1 Areas identified in the Draft Plan .....	12		
6.2 Areas identified by participants.....	12		
 Overlapping Goals .....	15		
7.1 Areas identified for multiple goals .....	15		

## 1.1 Context

The Nunavut Planning Commission (NPC) is preparing a land use plan to guide and direct resource use and development in the Nunavut Settlement Area (NSA). As part of its efforts, the NPC is facilitating discussions in each Nunavut community on land use and resource management issues. Information that is obtained from these discussions will be used to inform decisions regarding the further development of the Nunavut Land Use Plan (NLUP).

## 1.2 Purpose

This report presents information obtained during the NPC's visit to the community of Gjoa Haven. The purpose of the report is to inform decisions regarding the further development of the NLUP, ensuring that the plan reflects the priorities and values of residents.

It is important to note that the information contained in the Community Report will be considered in conjunction with all other feedback when revising the DNLUP.

## 1.3 Methodology

Information was presented to and received from participants in Gjoa Haven in accordance with the Nunavut Planning Commission's Community Engagement Strategy (Engagement Strategy). The Engagement Strategy provides for the following methods for presenting and receiving information;

- **Open house;** information contained in the Draft Nunavut Land Use Plan (DNLUP) was presented on 7 multi lingual large format poster boards. Participants were encouraged to review the posters, ask questions and provide feedback.
- **Elected Officials Meeting;** The NPC Chairperson and NPC staff met with senior and elected officials in the community. The development process for the DNLUP, its content and next steps were presented. Comments and questions were recorded during the session and are contained in Appendix 1.

- **Public Workshop;** A formal presentation of the Draft Plan content was provided to participants, including a slide overview of its content. Following the presentation, questions and comments were received from participants. The questions, comments and responses are contained in Appendix 2.

A mapping session followed the presentation of the Draft Plan. The mapping session involved discussions regarding the topics presented in the DNLUP and encouraged participants to identify additional areas and issues important for inclusion in a NLUP. Information received during this session was recorded by NPC staff and is included in Appendix 3.

Areas that participants identified during mapping sessions as important to a particular goal have, in the majority of cases, been included in this report as they were recorded. In instances where participants identified an area that was better suited to another goal, the area has been reclassified to the more suitable goal and has been verified as appropriate to do so by the Community.

A follow-up meeting was held on May 7, 2014 to review a draft version of this report with the Hamlet Council, Hunters and Trappers Organization, and Community Beneficiary Committee. A summary of this meeting is included in Appendix 4.

## 1.4 Public Awareness

The NPC raised public awareness regarding its visit to Gjoa Haven in accordance with the Engagement Strategy.

The DNLUP and supporting materials were mailed to the Mayor and Council of Gjoa Haven, and the Hunters and Trappers Organization (HTO) in September 2012. In addition, letters of invitation were sent to the Gjoa Haven Mayor and Council and HTO in advance of the NPC's visit to advise of the meetings and to encourage participation. Follow up phone calls were also made.

Public notice of the various events was provided in the following ways:

- **Nunatsiaq News and Nunavut News/North;** notice of community meetings were posted in both newspapers a minimum of 45 days in advance.
- **Co-op cable TV;** notice of community meetings was run a minimum of 45 days in advance for one week and run again for no less than 14 days before the meetings.
- **Community radio;** notices were read by the hosts and a live interview with the Commission Chairperson was conducted.
- **Community bulletin boards;** notices were posted on bulletin boards around the community 45 days and again 14 days in advance of the meetings.
- **Community mail drop;** one page flyers that announced the meetings and their purpose were delivered to the post office in each community for all mail boxes that accept unaddressed ad-mail.
- **nunavut.ca;** the schedule of community visits, the Draft Plan, and all supporting information was available on the Commission's website.

## 1.5 Community Population and Participation

Gjoa Haven is a community of approximately 1280 people (Statistics Canada, 2011 Census). It is located on King William Island (see Figure 1).

The Commission visited the community on March 24, 2014. The sessions were attended as follows;

- **Elected Officials Meeting;** the Mayor and members of the Hamlet Council and HTO attended the elected officials meeting.
- **Open house;** 0 people attended the open house to review the Draft Plan.

- **Public Workshop;** approximately 25 people attended the presentation of the DNLUP and facilitated mapping sessions. Information was recorded in two separate mapping groups.

The Wrap Up Session that was planned for March 25 did not occur due to flight scheduling.



Figure 1. Location of Gjoa Haven

# Chapter 2: Protecting and Sustaining the Environment

Protecting and Sustaining the Environment was one of five topics presented to and discussed by participants during the Open House, Elected Officials Meeting, Public Workshop and Wrap up Session, collectively referred to in this document as information sharing and gathering sessions.

## 2.1 Areas presented to participants

During the information sharing and gathering sessions, participants were presented the following areas and issues as important to Protecting and Sustaining the Environment.

- Key bird habitat sites
- Caribou Habitat sites
- Atlantic Cod Lakes
- Cumulative Impacts
- Transboundary considerations
- Climate change

The importance of these issues and areas to Protecting and Sustaining the Environment was not disputed by participants during the information sharing and gathering sessions.

## 2.2 Areas identified by participants

Additional areas and issues were identified by participants as important to Protecting and Sustaining the Environment during the information sharing and gathering sessions. These additional areas are;

- Hunting and fishing areas
- Whale habitat
- Caribou habitat
- Polar bear habitat
- Bird habitat

- Fish habitat
- Muskox habitat
- Grizzly bear habitat
- Seal habitat

## 2.3 Areas of importance to Protecting and Sustaining the Environment

Areas and issues discussed during the information sharing and gathering sessions as important to Protecting and Sustaining the Environment are illustrated on Map 1, including areas identified in the DNLUP and areas identified by the community. Scanned images of the maps on which community feedback was recorded can be found in Appendix 4.

Based on discussions with participants, the NPC understands that:

- The areas identified on Map 1 are considered by the Community to be important to Protecting and Sustaining the Environment.
- In these areas, the community would like the NLUP to encourage activities that support environmental protection and management needs, including wildlife conservation, protection and management.

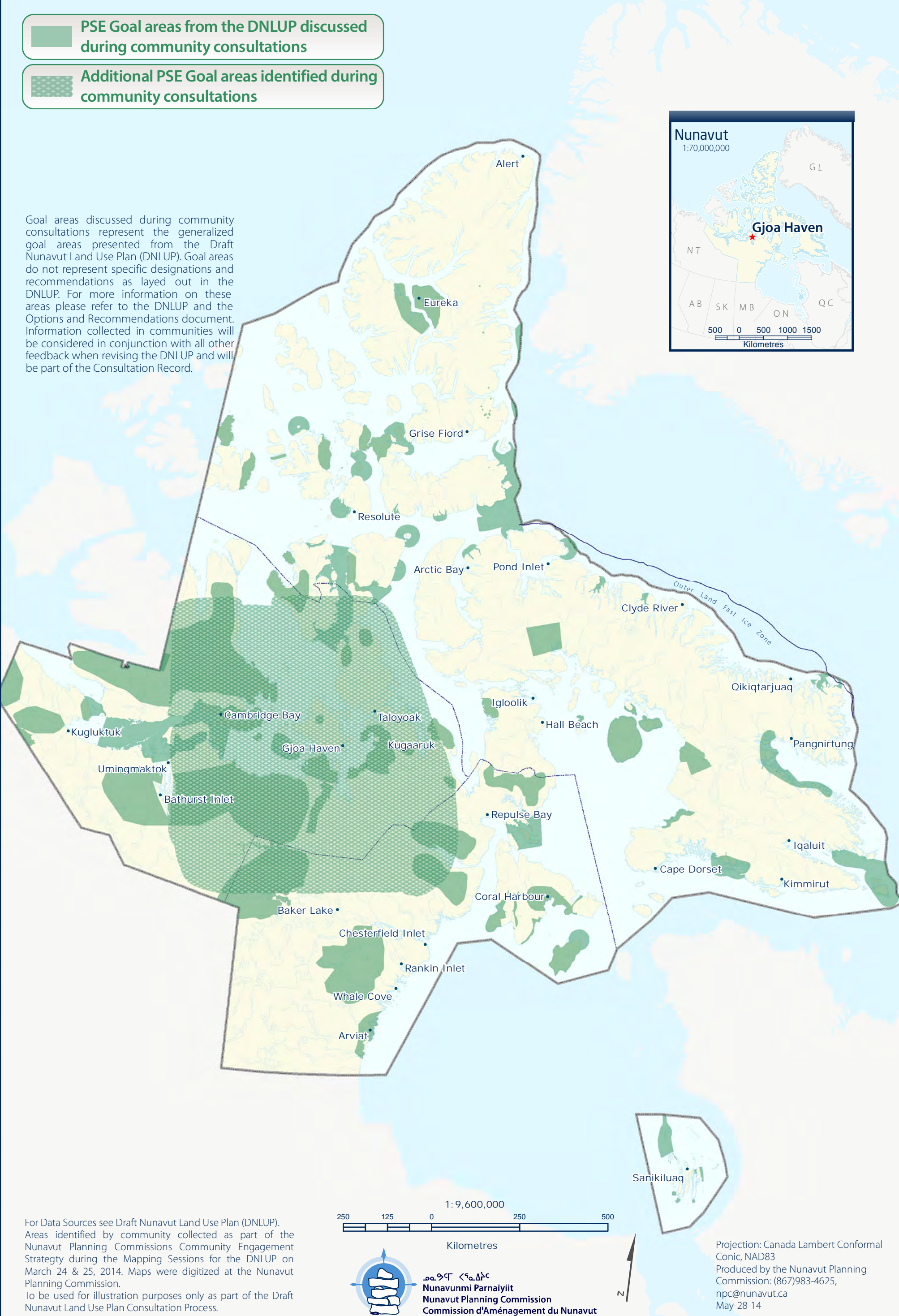
This feedback will be considered in conjunction with all other feedback when revising the DNLUP.





-  PSE Goal areas from the DNLUP discussed during community consultations
-  Additional PSE Goal areas identified during community consultations

Goal areas discussed during community consultations represent the generalized goal areas presented from the Draft Nunavut Land Use Plan (DNLUP). Goal areas do not represent specific designations and recommendations as layed out in the DNLUP. For more information on these areas please refer to the DNLUP and the Options and Recommendations document. Information collected in communities will be considered in conjunction with all other feedback when revising the DNLUP and will be part of the Consultation Record.





# Chapter 3: Encouraging Conservation Planning

Encouraging Conservation Planning was one of five topics presented to and discussed by the participants during the information sharing and gathering sessions.

## 3.1 Areas presented to participants

During the information sharing and gathering sessions, participants were presented the following areas and issues as important to Encouraging Conservation Planning;

- National Parks Awaiting Full Establishment
- Proposed National Parks
- National Marine Conservation Areas
- Thelon Wildlife Sanctuary
- Migratory Bird Sanctuaries
- National Wildlife Areas
- National Historic Sites
- Territorial Historic Sites
- Heritage Rivers

The importance of these issues and areas to Encouraging Conservation Planning was not disputed by participants during the information sharing and gathering sessions.

## 3.2 Areas identified by participants

Additional areas and issues were identified by participants as important to Encouraging Conservation Planning during the information sharing and gathering sessions. These additional areas are.

- Traditional areas for hunting, camping, fishing
- Polar bear habitat
- Historic sites

## 3.3 Areas of importance to Encouraging Conservation Planning

Areas and issues discussed during the information sharing and gathering sessions as important to Encouraging Conservation Planning are illustrated on Map 2, including areas identified in the DNLUP and areas identified by the community. Scanned images of the maps on which community feedback was recorded can be found in Appendix 4.

Based on discussions with participants, the NPC understands that:

- The areas identified on Map 2 are considered by the Community to be important to Encouraging Conservation Planning.
- In these areas, the community would like the NLUP to encourage activities that support environmental protection and management needs, including wildlife conservation, protection and management.

This feedback will be considered in conjunction with all other feedback when revising the DNLUP.

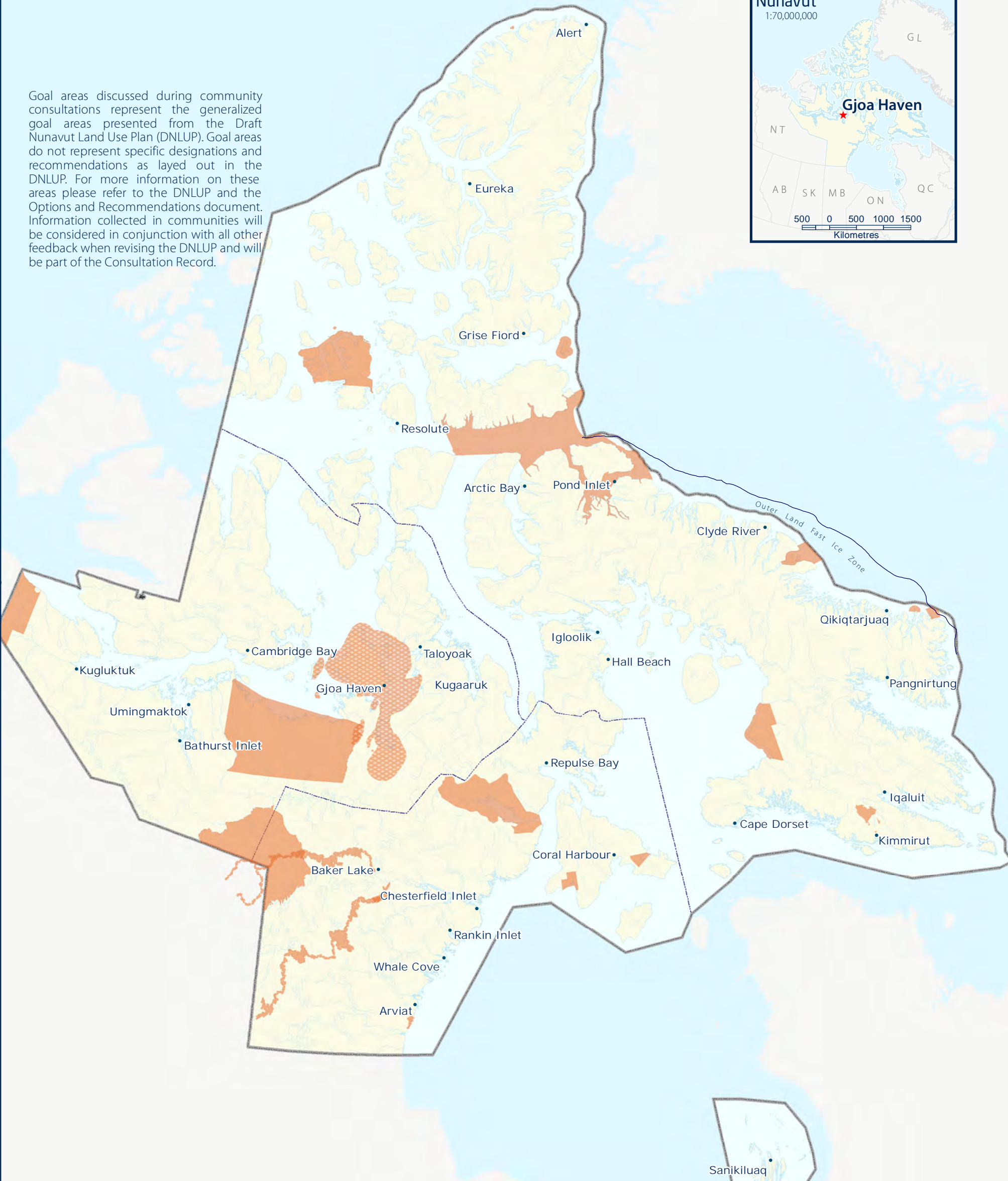




 ECP Goal areas from the DNLUP discussed during community consultations

 Additional ECP Goal areas identified during community consultations

Goal areas discussed during community consultations represent the generalized goal areas presented from the Draft Nunavut Land Use Plan (DNLUP). Goal areas do not represent specific designations and recommendations as layed out in the DNLUP. For more information on these areas please refer to the DNLUP and the Options and Recommendations document. Information collected in communities will be considered in conjunction with all other feedback when revising the DNLUP and will be part of the Consultation Record.



For Data Sources see Draft Nunavut Land Use Plan (DNLUP). Areas identified by community collected as part of the Nunavut Planning Commissions Community Engagement Strategy during the Mapping Sessions for the DNLUP on March 24 & 25, 2014. Maps were digitized at the Nunavut Planning Commission. To be used for illustration purposes only as part of the Draft Nunavut Land Use Plan Consultation Process.



ᑎᓄᓐᓂᓐ ᐃᓕᓐᓂᓐ  
Nunavunmi Parnaiyiit  
Nunavut Planning Commission  
Commission d'Aménagement du Nunavut



Projection: Canada Lambert Conformal Conic, NAD83  
Produced by the Nunavut Planning Commission: (867)983-4625, npc@nunavut.ca  
May-28-14



# Chapter 4: Building Healthier Communities

Building Healthier Communities was one of five topics presented to and discussed by the participants during the information sharing and gathering sessions.

## 4.1 Areas presented to participants

During the information sharing and gathering sessions, participants were presented the following areas and issues as important to Building Healthier Communities;

- Areas of Community Interest
- Community Land Use
- Transportation Infrastructure
- Unincorporated Communities
- Alternative Energy Sources
- Community drinking water supplies
- Land remediation
- Northern Contaminated Sites Program
- Aerodromes
- Canadian Forces Station
- Northern Warning System sites

The importance of these issues and areas to Building Healthier Communities was not disputed by participants.

## 4.2 Areas identified by participants

Additional areas and issues were identified by participants as important to contributing to the goal of Building Healthier Communities during the information sharing and gathering sessions. These additional areas are;

- Drinking water

- Contaminated sites

## 4.3 Areas of importance to Building Healthier Communities

Areas and issues discussed during the information sharing and gathering sessions as important to Building Healthier Communities are illustrated on Map 3, including areas identified in the DNLUP and areas identified by the community. Scanned images of the maps on which community feedback was recorded can be found in Appendix 4.



Based on discussions with participants, the NPC understands that:

- The areas identified on Map 3 are considered by the Community to be important to Building Healthier Communities.
- In these areas, the community would like the NLUP to encourage activities that support community needs and cultural priorities.

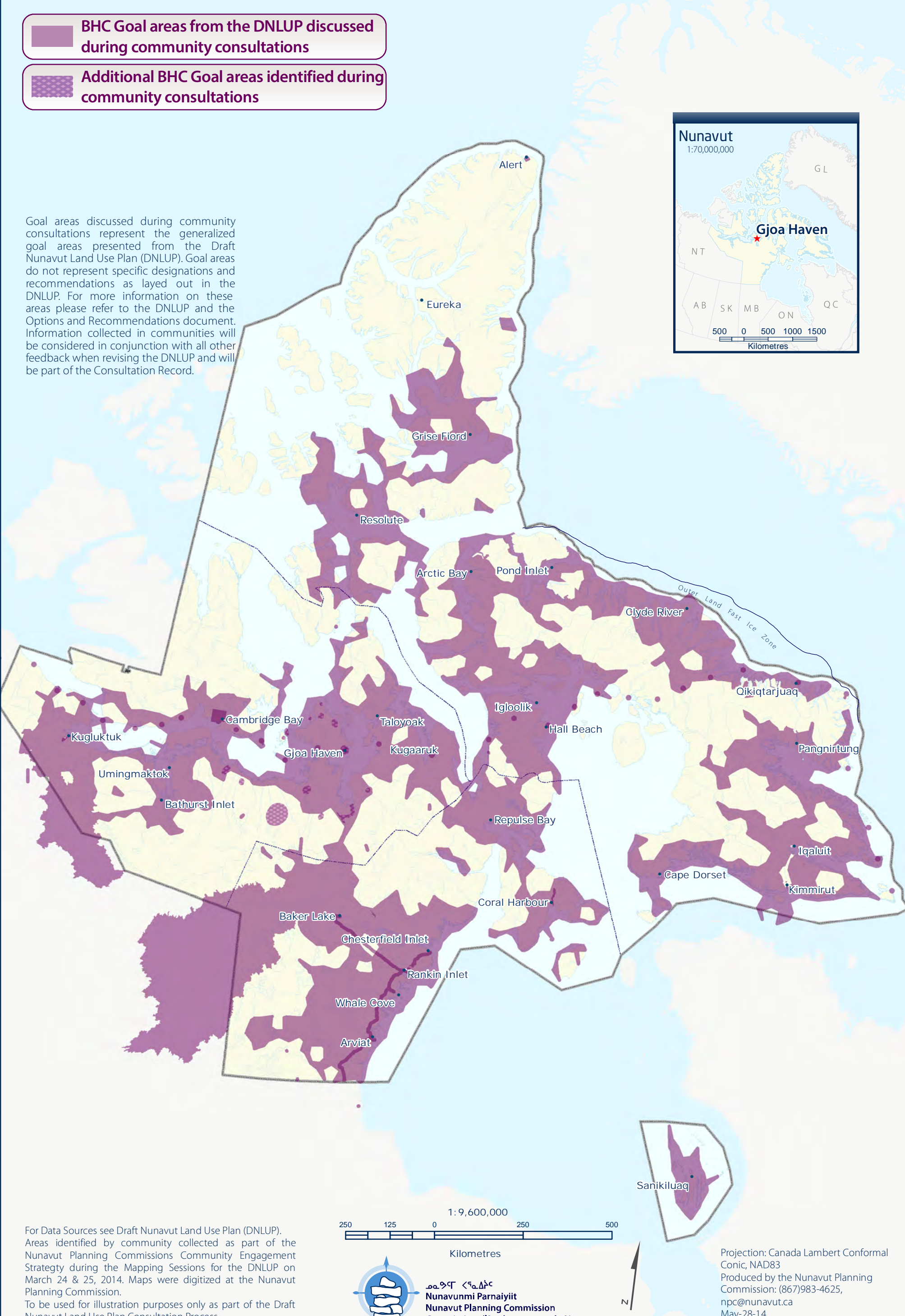
This feedback will be considered in conjunction with all other feedback when revising the DNLUP.





-  BHC Goal areas from the DNLUP discussed during community consultations
-  Additional BHC Goal areas identified during community consultations

Goal areas discussed during community consultations represent the generalized goal areas presented from the Draft Nunavut Land Use Plan (DNLUP). Goal areas do not represent specific designations and recommendations as layed out in the DNLUP. For more information on these areas please refer to the DNLUP and the Options and Recommendations document. Information collected in communities will be considered in conjunction with all other feedback when revising the DNLUP and will be part of the Consultation Record.



For Data Sources see Draft Nunavut Land Use Plan (DNLUP). Areas identified by community collected as part of the Nunavut Planning Commissions Community Engagement Strategy during the Mapping Sessions for the DNLUP on March 24 & 25, 2014. Maps were digitized at the Nunavut Planning Commission. To be used for illustration purposes only as part of the Draft Nunavut Land Use Plan Consultation Process.

Projection: Canada Lambert Conformal Conic, NAD83  
Produced by the Nunavut Planning Commission: (867)983-4625, npc@nunavut.ca May-28-14



## Chapter 5: Encouraging Sustainable Economic Development

Encouraging Sustainable Economic Development was one of five topics presented to and discussed by the participants during the information sharing and gathering sessions.

### 5.1 Areas presented to participants

During the information sharing and gathering sessions, participants were presented with the following areas important to Encouraging Sustainable Economic Development;

- Mineral Exploration and Production
- Oil and Gas Exploration
- Commercial Fisheries

The importance of these issues and areas to Encouraging Sustainable Economic Development was not disputed by participants during the information sharing and gathering sessions.

### 5.2 Areas identified by participants

Additional areas and issues were identified by participants as important to Encouraging Sustainable Economic Development during the information sharing and gathering sessions. The additional areas identified are;

- Commercial fisheries
- Sports hunting and fishing
- Tourism

### 5.3 Areas of importance to Encouraging Sustainable Economic Development

Areas and issues discussed during the information sharing and gathering sessions as important to Encouraging Sustainable Economic Development are illustrated on Map 4, including areas identified in the DNLUP and areas identified by the

community. Scanned images of the maps on which community feedback was recorded can be found in Appendix 4.

Based on discussions with participants, the NPC understands that:

- The areas identified on Map 4 are considered by the Community to be important to Encouraging Sustainable Economic Development.
- In these areas, the community would like the NLUP to encourage activities that support economic opportunities and needs.

This feedback will be considered in conjunction with all other feedback when revising the DNLUP.

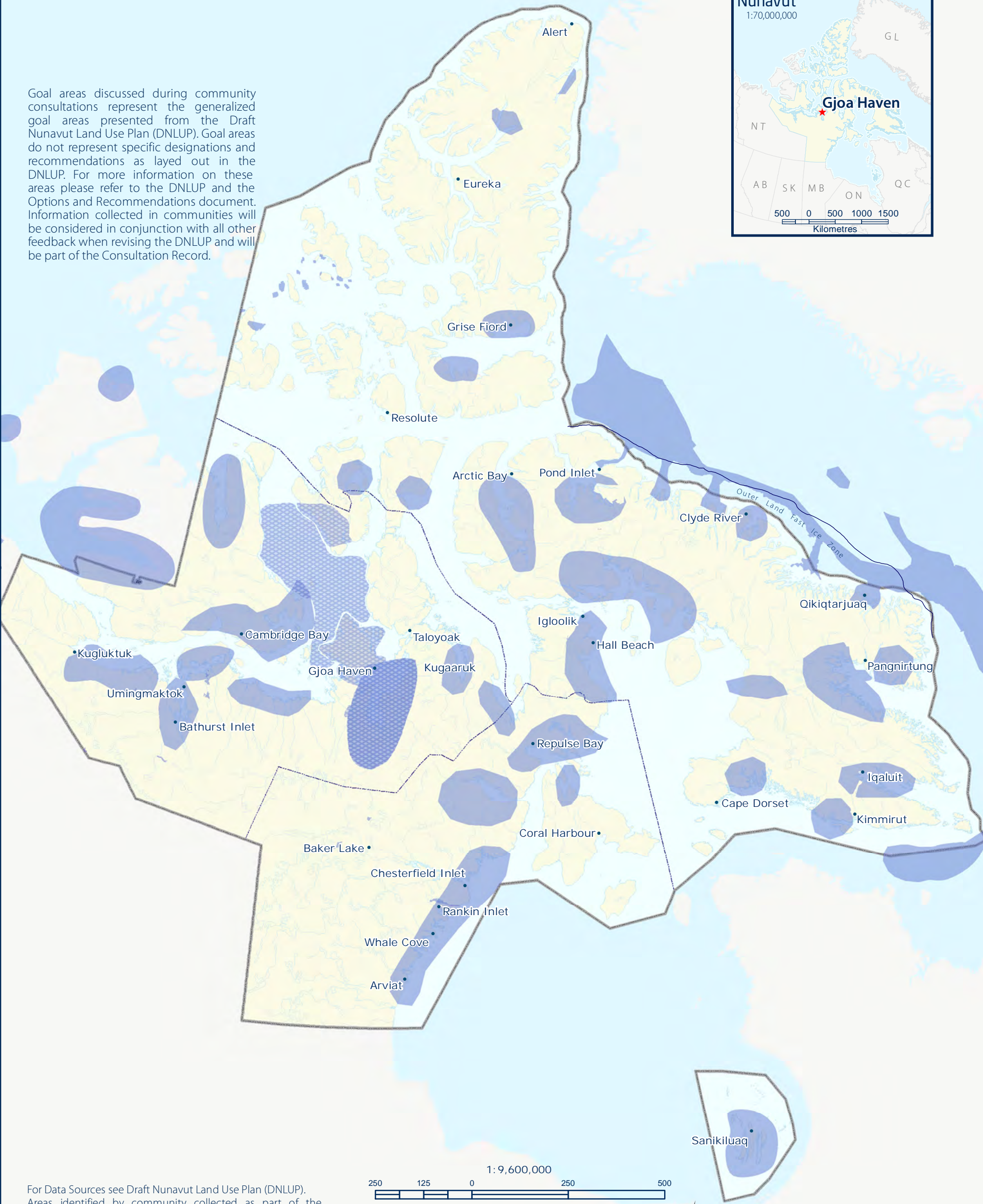




ESED Goal areas from the DNLUP discussed during community consultations

Additional ESED Goal areas identified during community consultations

Goal areas discussed during community consultations represent the generalized goal areas presented from the Draft Nunavut Land Use Plan (DNLUP). Goal areas do not represent specific designations and recommendations as layed out in the DNLUP. For more information on these areas please refer to the DNLUP and the Options and Recommendations document. Information collected in communities will be considered in conjunction with all other feedback when revising the DNLUP and will be part of the Consultation Record.



For Data Sources see Draft Nunavut Land Use Plan (DNLUP). Areas identified by community collected as part of the Nunavut Planning Commissions Community Engagement Strategy during the Mapping Sessions for the DNLUP on March 24 & 25, 2014. Maps were digitized at the Nunavut Planning Commission. To be used for illustration purposes only as part of the Draft Nunavut Land Use Plan Consultation Process.

250 125 0 250 500

Kilometres

ᓄᓇᓂᓄᓄ ᐸᓄᓇᐱᓄᓄᓄ

Nunavunmi Parnaiyiit

Nunavut Planning Commission

Commission d'Aménagement du Nunavut

N

Projection: Canada Lambert Conformal Conic, NAD83  
Produced by the Nunavut Planning Commission: (867)983-4625, npc@nunavut.ca  
May-28-14



### 6.1 Areas identified in the Draft Plan

The DNLUP identifies areas important for a variety of uses. These areas were presented to participants during the workshop as Mixed Use Areas. These areas, as they occur around the community, are illustrated on Map 5.

### 6.2 Areas identified by participants

No additional areas were identified as Mixed Use by participants. However, some areas identified as Mixed Use in the DNLUP were considered by participants to require additional protection because of their particular qualities. These areas and the goals they are important for are identified on Map 6.

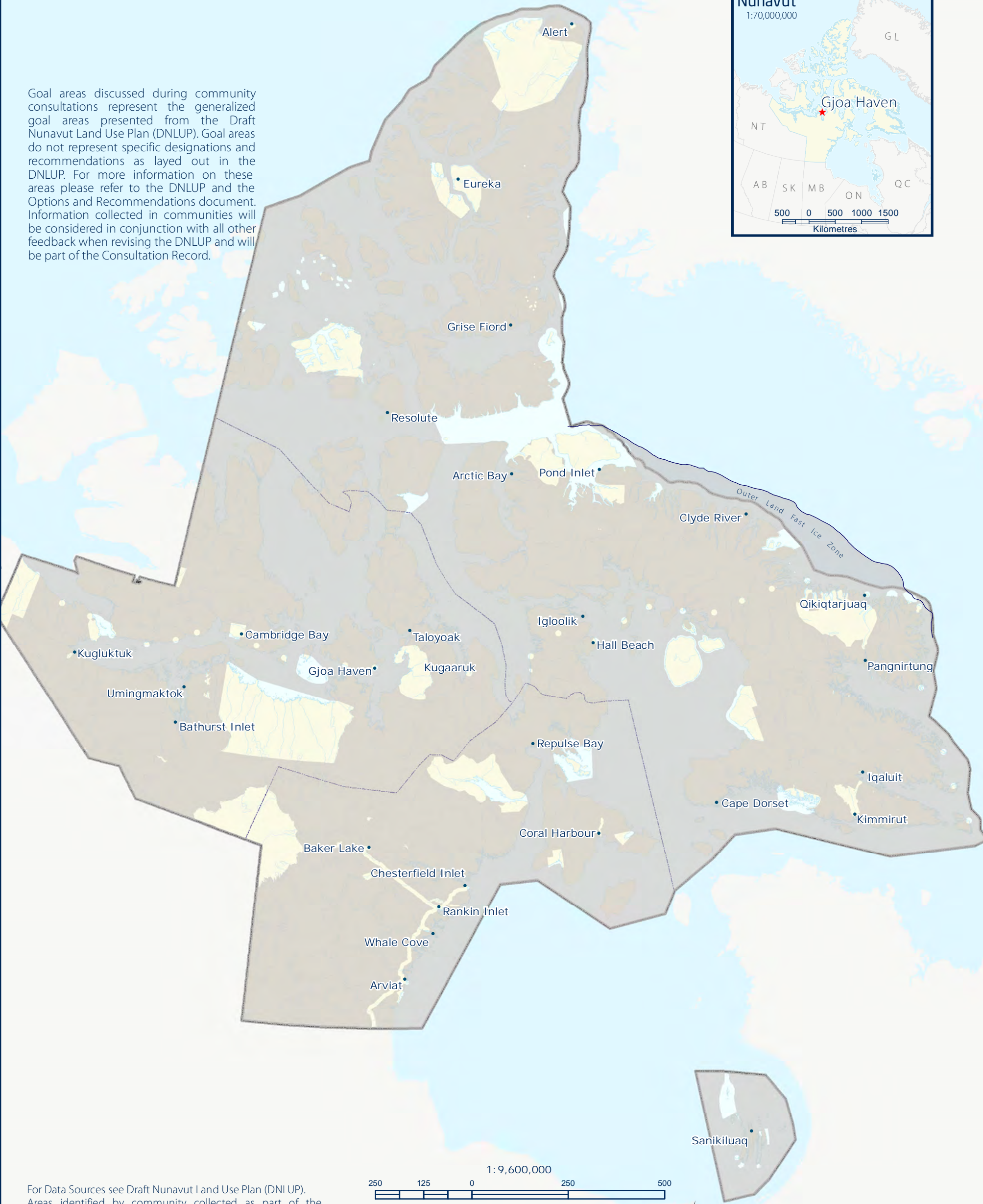






MU Goal areas from DNLUP discussed during community consultations

Goal areas discussed during community consultations represent the generalized goal areas presented from the Draft Nunavut Land Use Plan (DNLUP). Goal areas do not represent specific designations and recommendations as layed out in the DNLUP. For more information on these areas please refer to the DNLUP and the Options and Recommendations document. Information collected in communities will be considered in conjunction with all other feedback when revising the DNLUP and will be part of the Consultation Record.



For Data Sources see Draft Nunavut Land Use Plan (DNLUP). Areas identified by community collected as part of the Nunavut Planning Commissions Community Engagement Strategy during the Mapping Sessions for the DNLUP on March 24 & 25, 2014. Maps were digitized at the Nunavut Planning Commission. To be used for illustration purposes only as part of the Draft Nunavut Land Use Plan Consultation Process.



**Nunavunmi Parnaiyit**  
**Nunavut Planning Commission**  
**Commission d'Aménagement du Nunavut**



Projection: Canada Lambert Conformal Conic, NAD83  
Produced by the Nunavut Planning Commission: (867)983-4625, npc@nunavut.ca  
Wednesday, April 23, 2014



MIXED USE (MU) • GJOA HAVEN • MAP 6

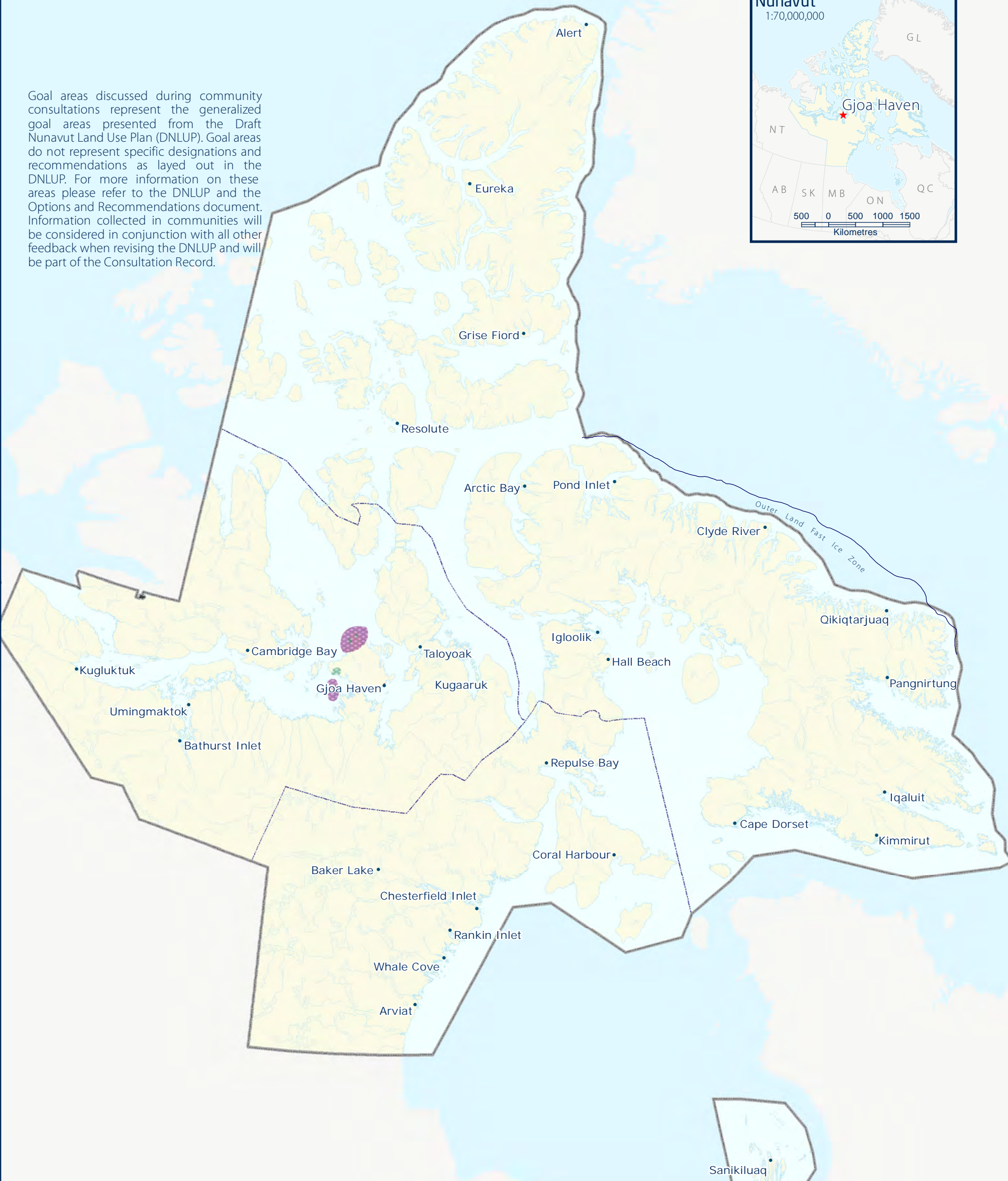


Additional PSE Goal areas identified during community consultations



Additional BHC Goal areas identified during community consultations

Goal areas discussed during community consultations represent the generalized goal areas presented from the Draft Nunavut Land Use Plan (DNLUP). Goal areas do not represent specific designations and recommendations as laid out in the DNLUP. For more information on these areas please refer to the DNLUP and the Options and Recommendations document. Information collected in communities will be considered in conjunction with all other feedback when revising the DNLUP and will be part of the Consultation Record.



For Data Sources see Draft Nunavut Land Use Plan (DNLUP). Areas identified by community collected as part of the Nunavut Planning Commissions Community Engagement Strategy during the Mapping Sessions for the DNLUP on March 24 & 25, 2014. Maps were digitized at the Nunavut Planning Commission. To be used for illustration purposes only as part of the Draft Nunavut Land Use Plan Consultation Process.



**Nunavunmi Parnaiyiit**  
**Nunavut Planning Commission**  
**Commission d'Aménagement du Nunavut**

Projection: Canada Lambert Conformal  
Conic, NAD83  
Produced by the Nunavut Planning  
Commission: (867)983-4625,  
npc@nunavut.ca  
Wednesday, April 23, 2014

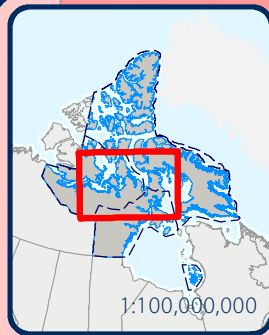
### 7.1 Areas identified for multiple goals

All areas discussed with the community as important for a particular goal are shown on Map 7. In some instances, areas have been identified as important for multiple goals. These areas, and the specific goals they are important to, are also shown on Map 7. In these areas, the NPC will take all of the identified goals and all other feedback into consideration when revising the DNLUP.





# Gjoa Haven • Map 7 Overlapping Goal Areas



1:100,000,000

- 1 Goal Identified in area
- 2 Goals Identified in area
- 3 Goals Identified in area
- 4 Goals Identified in area

Established Parks  
(Land Use Plan does not apply)

Administrative Boundary

1:3,000,000  
0 50 100  
Kilometres

Projection: Lambert Conformal Conic, NAD83  
Areas identified by community collected as part of the Nunavut Planning Commissions Community Engagement Strategy during the Mapping Sessions for the DNLUP on March 24 & 25, 2014. Maps were digitized at the Nunavut Planning Commission.  
To be used for illustration purposes only as part of the draft Nunavut Land Use Plan consultation process. Produced by the Nunavut Planning Commission (NPC), 24/04/2014.

## Label Goals in Area

A	PSE
B	ECP
C	BHC
D	ESED
E	PSE, ECP
F	BHC, ECP
G	BHC, PSE
H	ESED, ECP
I	ESED, PSE
K	BHC, ESED
L	BHC, PSE, ECP
M	BHC, ESED, ECP
N	BHC, ESED, PSE
O	ESED, PSE, ECP
P	All Goals (BHC, ESED, PSE, ECP)



## Appendix 1: Elected Officials Meeting

The elected officials meeting was attended by the Mayor and members of the Hamlet Council and HTO. During the meeting, participants raised the following issues:

- Question regarding how Inuit will be affected by the plan, specifically for cabins and camping.
  - The Commission reposed that the plan will not stop people from hunting, fishing, camping or building cabins.
- Concerned about the protection of burial sites.





## Appendix 2: Questions and Answers

During the community workshop, there was a question and answer period, which included a discussion of the following topics:

- (Regarding certain areas – bird nesting, calving area, Kutaq - the river (??)) Perhaps around the 70s not a lot of migratory birds, but now a lot - has become nesting area. Nesting area spreading to mainland - used to be on islands. Perhaps needs to be protected from development, especially mining, exploration, oil and gas.
  - The Commission responded that these areas can be identified during the mapping session that will follow.



## Appendix 3: Community Workshop Scanned Maps

Two groups completed the mapping session to identify important areas. This Appendix contains the maps that were used by participants to identify areas that are important to the following land use planning goals:

- Protecting and Sustaining the Environment
- Encouraging Conservation Planning
- Building Healthier Communities
- Encouraging Sustainable Economic Development
- Mixed Use

Also included on each map is a reference table that includes the specific values that were identified for the area.

Note: The documented comments for Group 1 were not verified with an audio recording.

During the mapping portion of the community workshop, the following concerns were raised that did not apply to a specific area that was identified on the maps:

- Proposed port for west. Concerned with marine traffic. Marine shipping route might affect wildlife. Don't want marine traffic through here.
- Marine traffic will be bad for Inuit boaters and hunters in area. Although profitable, the profits will not stay up here and create disturbance. We are being depressed by these projects with no benefit.
- In spring I walk with my son south through eastern edge of Queen Maude Bird Sanctuary looking for caribou.
- I worry about these contaminated sites. Caribou are coming here now. Two disturbing soiled areas. They are contaminated and in prime hunting spots.
- CAM-3 North Warning System Site: They say it has been cleaned up but they did not do a good job.

- We've heard about park that somebody wanted to establish, but it has not happened. If it happens we would like to know.
- Back River outlet to ocean: This area is traditional land. Very important. When people left and dispersed, some came north to Gjoa Haven and some went to Baker Lake.
- Shipping route from Gjoa Haven to west should be mapped because ships run aground and we don't know the shallows. Don't see rocks until you are on them west of Gjoa Haven. Even in Kugluktuk area it is hard to tell where the shoals are. Water is getting lower and lower each year.
- Instead of from warming air I have a theory that global warming heat is coming from the ground to cause water to go lower. All over island lakes have dried up since childhood - now dry lake beds even in spring.





 Roads  
 Established Parks (Land Use Plan does not apply)  
 Inuit Owned Lands (Surface)  
 Inuit Owned Lands (Sub-surface)  
 Administrative Boundary

Designations	Permitted Uses	Prohibited Uses
Category 1	Security, Maintenance, Research	Air Crime Units
Category 2	Security, Investigation, Research	
Category 3	Security, Research, Maintenance, Airline Infrastructure, Shared Communications and Electrical Cables	

[illegible]

Code	Comments
XP01	Polar Bear hunting area in this region, concerned about proposed marine traffic. Don't want marine traffic through here
XP02	Populated by Polar Bear during winter season. Concerned they will disperse due to shipping. Sea's are all around here as well. Too much marine traffic will disturb seals. Well known by elders. Don't want marine traffic through here
XP03	Beluga area, worried about shipping. Don't want marine traffic through here
XP04	Polar Bear, seal area
XP05	Bowhead whale area, also lots of Polar Bears, Beluga, marine mammals, converge in summer
XP06	New area where Polar Bear are being sighted and hunted

Name		
Community Role		
Siggy #		
<b>Signatures of the Community sign'ry is permission given to conduct its singing, concert or performance.</b>		
1		16
2		17
3		18
4		19
5		20
6		21
7		22
8		23
9		24
10		25
11		26
12		27
13		28
14		29
15		30
Signature of Missions _____		
_____		

Coordinate System: EPSG 42304 UCC  
 Projection: Lambert Conformal Conic  
 Datum: North American 1983  
 False Easting: 0.0000  
 False Northing: 0.0000  
 Central Meridian: -95.0000  
 Standard Parallel 1: 45.0000  
 Standard Parallel 2: 77.0000  
 Latitude Of Origin: 45.0000  
 Units: Meter

[illegible]



## PROTECTING AND SUSTAINING THE ENVIRONMENT (PSE)

Scale 1:1,000,000



 Roads  
 Established Parks  
 Land Use Functions not apply  
 Inuit Owned Lands (Surface)  
 Inuit Owned Lands (Sub-surface)  
 Administrative Boundary

Designations	Permitted Uses	Prohibited Uses
Researcher	Research, Reproduction, Research	All Other Uses
Researcher	Research, Reproduction, Research	
Researcher	Research, Reproduction, Research, Mass Production	

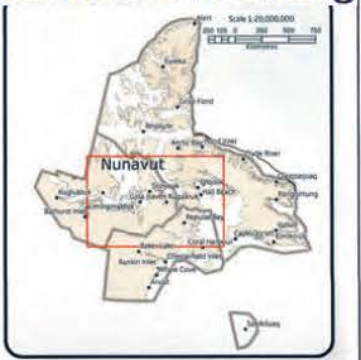
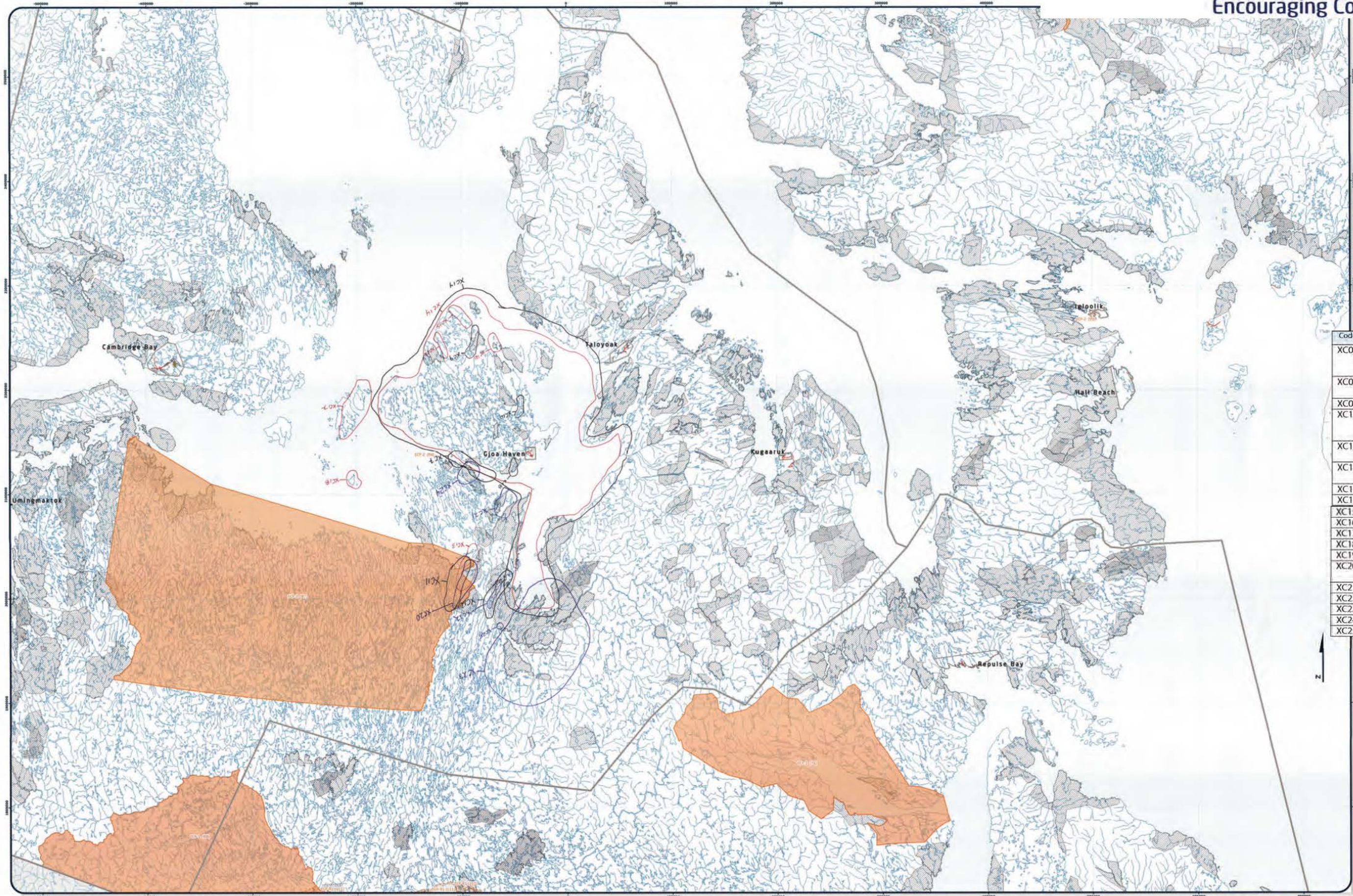
USDA FWS Recommendation	
Project Impacts limited to a dry stream bed and no other impacts on the migration only take place on the site.	Project Impacts limited to a dry stream bed and no other impacts on the migration only take place on the site.
Project Impacts limited to a dry stream bed and no other impacts on the migration only take place on the site.	Project Impacts limited to a dry stream bed and no other impacts on the migration only take place on the site.
Project Impacts limited to a dry stream bed and no other impacts on the migration only take place on the site.	Project Impacts limited to a dry stream bed and no other impacts on the migration only take place on the site.
Project Impacts limited to a dry stream bed and no other impacts on the migration only take place on the site.	Project Impacts limited to a dry stream bed and no other impacts on the migration only take place on the site.
Project Impacts limited to a dry stream bed and no other impacts on the migration only take place on the site.	Project Impacts limited to a dry stream bed and no other impacts on the migration only take place on the site.

Code	Comments
XP01	Back in the 70/80s this lake there was a lot of small islands known to be nesting areas for snow geese.
XP02	The nesting area has expanded into this area (see above comment)
XP03	This particular area has fish running that spread to all this area. They migrate back to this river in the fall time. It is the area we survived on fish because there were no caribou at this time.
XP04	Caribou migration route starts in April/May. The caribou doesn't come from one area, it comes from all over as they move northward
XP05	In early spring they start moving north. Caribou migration route. Bathurst hear, Peary herd – but there are other types of herds that come thru. They come back down the same way. Wolves are always following the herd, Wolverines, grizzly were not seen in the 80s/90s but today they are. There are reports of grizzlies on the islands.
XP06	Fish are all around the coastal area. When the ice start melting people start fishing. There doesn't seem to be any fish in the winter time.
XP07	Polar bears are in this area. Polar bears have come into Gjoa Haven.
XP08	Population of muskox, way back when we moved into Gjoa Haven no muskox – but today – muskox can be seen everywhere.
XP09	Caribou migration route coming from the west
XP10	This is an area his family has hunted caribou. A large herd would be seen coming west – but not in winter. Ancestors know there were a lot of caribou on the islands but it appears all animals have disappeared.
XP11	Grizzly bears are moving in these areas. Back in the day there were no problems with grizzly bears.
XP12	Long time ago no caribou, caribou is now on the island

[illegible]



Gjoa Haven - Group 1 Results  
Encouraging Conservation Planning



Designations	Permitted Uses	Prohibited Uses
XC07	Traditional land use	All other uses
XC08	Traditional land use	All other uses
XC09	Traditional land use	All other uses
XC10	Traditional land use	All other uses
XC11	Traditional land use	All other uses
XC12	Traditional land use	All other uses
XC13	Traditional land use	All other uses
XC14	Traditional land use	All other uses
XC15	Traditional land use	All other uses
XC16	Traditional land use	All other uses
XC17	Traditional land use	All other uses
XC18	Traditional land use	All other uses
XC19	Traditional land use	All other uses
XC20	Traditional land use	All other uses
XC21	Traditional land use	All other uses
XC22	Traditional land use	All other uses
XC23	Traditional land use	All other uses
XC24	Traditional land use	All other uses
XC25	Traditional land use	All other uses

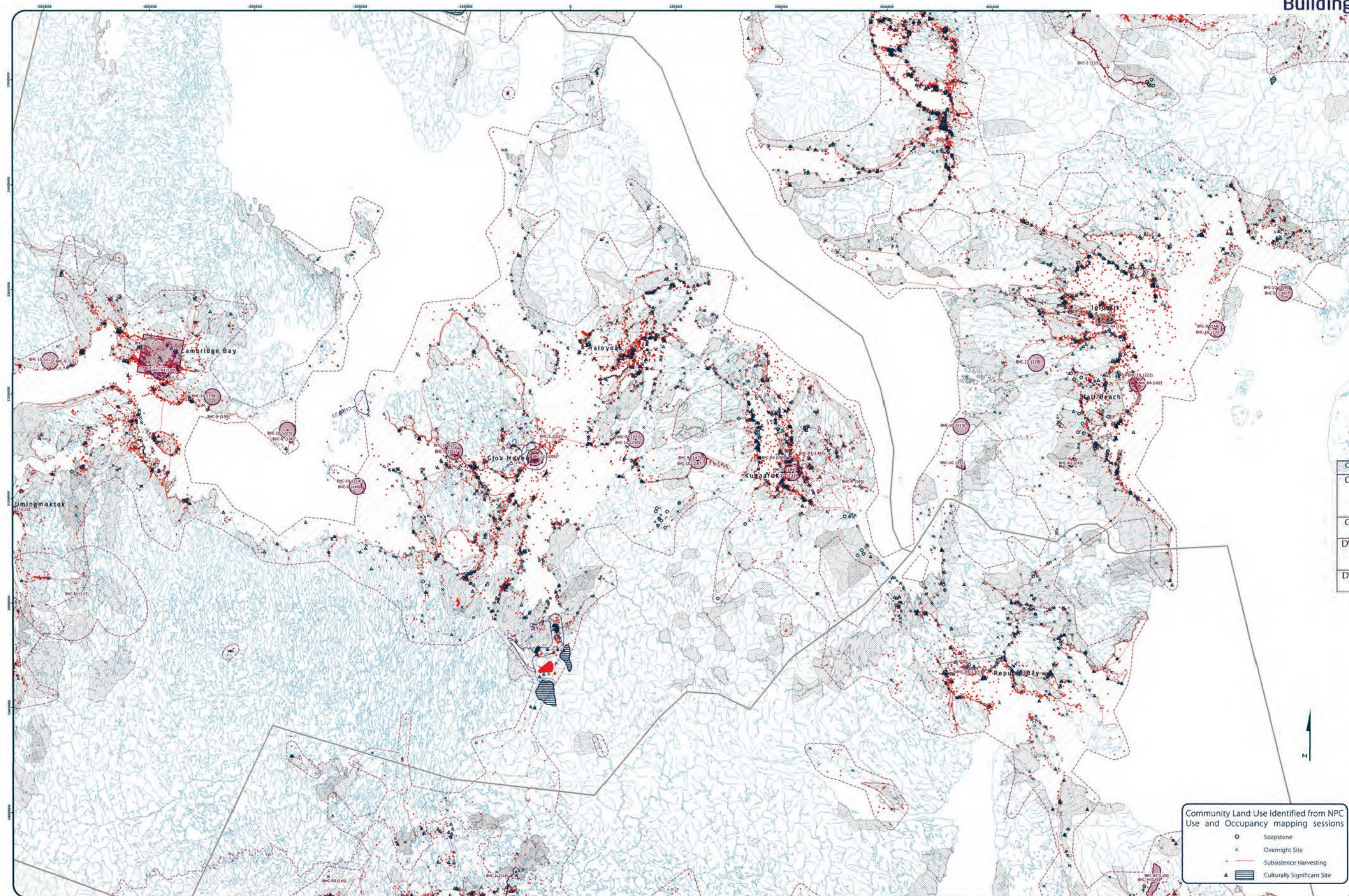
Code	Comments
XC07	Drying caribou meat, making pipsi, lots of fish. Traditional land. We come here to wait for ice to go away in spring.
XC08	Used to be lots of fish in this river, but now it dries up in summer
XC09	River where we fish
XC10	River where we fish. This is where the fish spawn. Getting warmer in summer and water levels are dropping in summer.
XC11	Used to be lots of whitefish in fall but they come later now and starting to die off.
XC12	Lots of lake trout, my birthplace. As youngsters this is where we roamed.
XC13	Caribou
XC14	During spring char are all along the coast
XC15	Polar Bear denning area
XC16	Polar Bear denning area
XC17	Polar Bear denning area
XC18	Polar Bear denning area
XC19	Polar Bear denning area
XC20	Old traditional campgrounds - still in use today
XC21	Traditional land - fishing area
XC22	Traditional land - fishing area
XC23	Traditional land, camping
XC24	Traditional land, camping
XC25	Ancient grave

1	26
2	27
3	28
4	29
5	30
6	31
7	32
8	33
9	34
10	35
11	36
12	37
13	38
14	39
15	40



Coordinate System: EPSG 42304 UTM  
Projection: Lambert Conformal Conic  
Datum: North American 1983  
False Easting: 0.0000  
False Northing: 0.0000  
Central Meridian: -95.0000  
Standard Parallel 1: 49.0000  
Standard Parallel 2: 77.0000  
Latitude Of Origin: 49.0000  
Units: Meter





Designations	Permitted Uses	Prohibited Uses
BHC-1	Roads, Railways, Utilities and Corridors	
BHC-2	Roads, Railways, Utilities and Corridors	
BHC-3	All uses except those Prohibited	Mining
BHC-4	Hydro electrical and related infrastructure	
BHC-5	Tourism, Recreation and Research, Municipal Services	
BHC-6	Municipal Services	All Other Uses
BHC-7	Municipal Services	All Other Uses
BHC-8	Remediation and Reclamation Activities	All Other Uses
BHC-9	Remediation and Reclamation Activities, DND Operations and Activities	All Other Uses
BHC-10	DND Operations and Activities	All Other Uses

BHC Recommendation

Reference Table for Recommendations

BHC-1	Project Proposals located in the Hudson River Area of Interest should take into account impacts on the cultural value of the area.
BHC-2	Project Proposals located in areas of traditional land use should take into account impacts on the cultural value of the area.
BHC-3	Project Proposals located in a community water supply watershed should take into account impacts on the quality and quantity of community drinking water.
BHC-4	Project Proposals located in a municipal Aerodrome should take into account impacts on aerodrome safety.

Code	Comments
CI26	Abandoned in 60's contamination reaching lakes. This is not cleaned up. Will be started to clean up this summer. Last year it was examined.
CI27	Lots of old barrels - very polluted messy - spilled.
DW28	Back River originates from far inland towards Yellowknife. Area should be managed. Good drinking water.
DW29	Gjoa Haven drinking water. Swan Lake also fishing lake and should be protected

Community: \_\_\_\_\_  
Location: \_\_\_\_\_  
Region: \_\_\_\_\_  
Date: \_\_\_\_\_  
Community Title: \_\_\_\_\_  
Map # \_\_\_\_\_

Signatures of the Community (signify as per instructions):

1.	16.
2.	17.
3.	18.
4.	19.
5.	20.
6.	21.
7.	22.
8.	23.
9.	24.
10.	25.
11.	26.
12.	27.
13.	28.
14.	29.
15.	30.

Signature of Mapper: \_\_\_\_\_

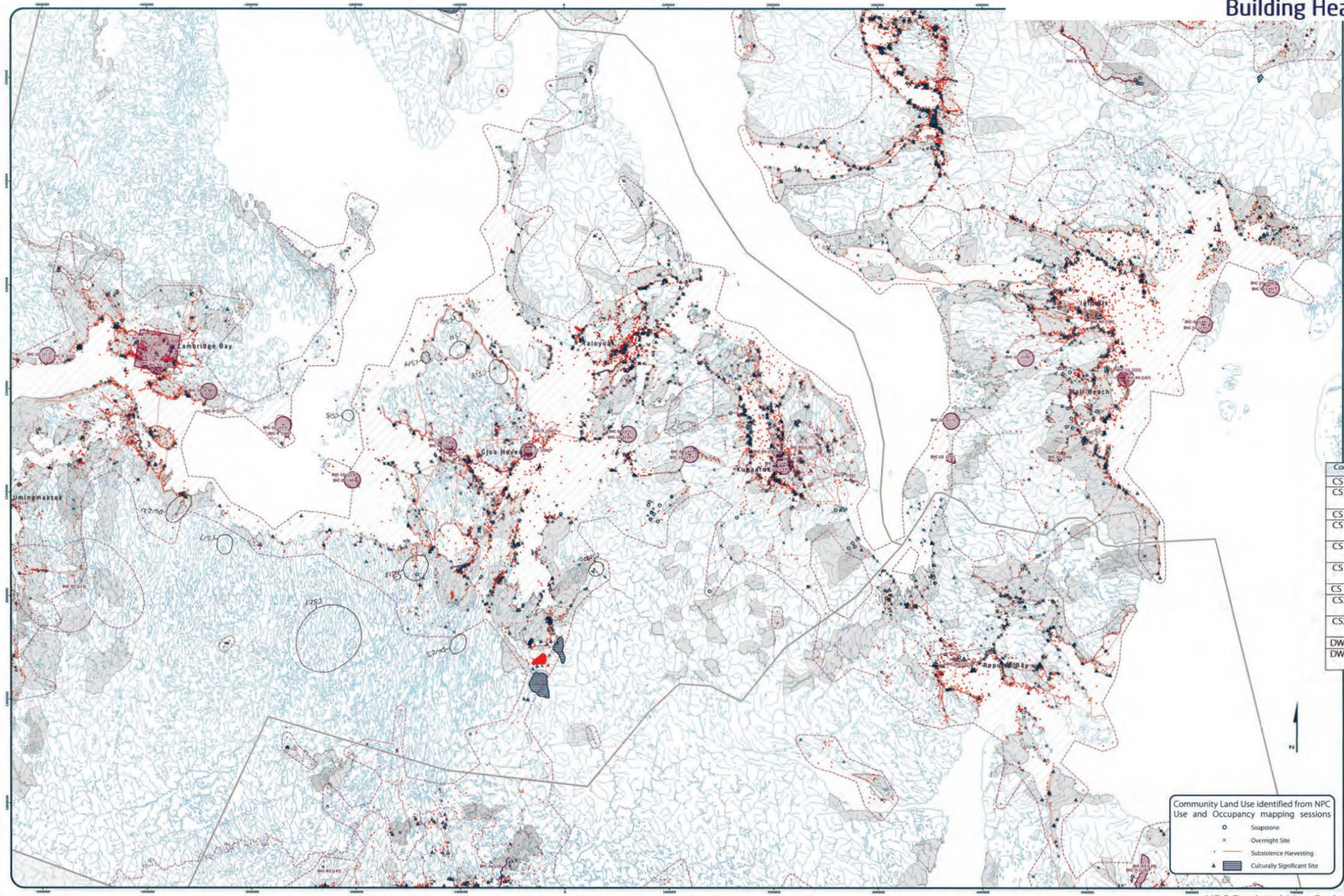


Coordinate System: EPSG 42304 UTM  
Projection: Lambert Conformal Conic  
Datum: North American 1983  
False Easting: 0.0000  
False Northing: 0.0000  
Central Meridian: -95.0000  
Standard Parallel 1: 49.0000  
Standard Parallel 2: 77.0000  
Latitude Of Origin: 49.0000  
Units: Meter

Working Draft: This map is a preliminary map and is not for use in legal proceedings. It is intended for informational purposes only. The map is based on data provided by the community and is not a guarantee of accuracy. The map is subject to change without notice. The map is not to be used for reference purposes only by the NPC. Any further use of this map or data therein must be authorized by contacting the Nunavut Planning Commission at (867) 983-4625 or email [info@nuplanning.com](mailto:info@nuplanning.com).  
Tuesday, March 11, 2014



# Gjoa Haven - Group 2 Results Building Healthier Communities



Designations	Permitted Uses	Prohibited Uses
Residential	Residential, Tourism and Recreation	Industrial, Commercial, and Institutional
Commercial	Commercial, Tourism and Recreation	Industrial, Residential, and Institutional
Industrial	Industrial, Tourism and Recreation	Commercial, Residential, and Institutional
Public Lands	Public Lands, Tourism and Recreation	Commercial, Residential, and Institutional
Protected Lands	Protected Lands, Tourism and Recreation	Commercial, Residential, and Institutional
...	...	...

Reference Table for Recommendations
Project Proponent should take into account impacts on the cultural value of the site.
Project Proponent should take into account impacts on the quality and quantity of community drinking water.
Project Proponent should take into account impacts on the quality and quantity of community drinking water.
Project Proponent should take into account impacts on the quality and quantity of community drinking water.

Code	Comments
CS13	Fuel drums have been left behind here
CS14	Contaminated area from helicopter fuel drums
CS15	Helicopter fuel drums
CS16	Caribou fuel, diesel fuel drums left behind. Old barrels as well
CS17	Helicopter fuel, diesel fuel drums left behind
CS18	10 Gallon barrels in this area. Drums contain helicopter fuel as well as regular gas.
CS19	Fuel/gas empty drums
CS20	NWB have cabin in this area where there are helicopter fuel drums
CS21	Migratory bird camp in this area where drums have been left behind
DW22	Water testing area - clean drinking water
DW23	Water testing area, clean drinking water and fresh fish area

17	18	19	20	21	22	23	24	25	26	27	28	29	30	31	32	33	34	35	36	37	38	39	40	41	42	43	44	45	46	47	48	49	50
----	----	----	----	----	----	----	----	----	----	----	----	----	----	----	----	----	----	----	----	----	----	----	----	----	----	----	----	----	----	----	----	----	----

Signature of Mapper

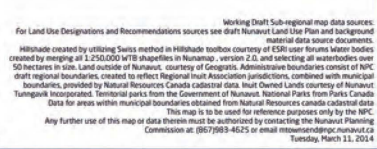


Community Land Use identified from NPC Use and Occupancy mapping sessions

- Soapstone
- ✕ Overnight Site
- Subsistence Harvesting
- ▲ Culturally Significant Site

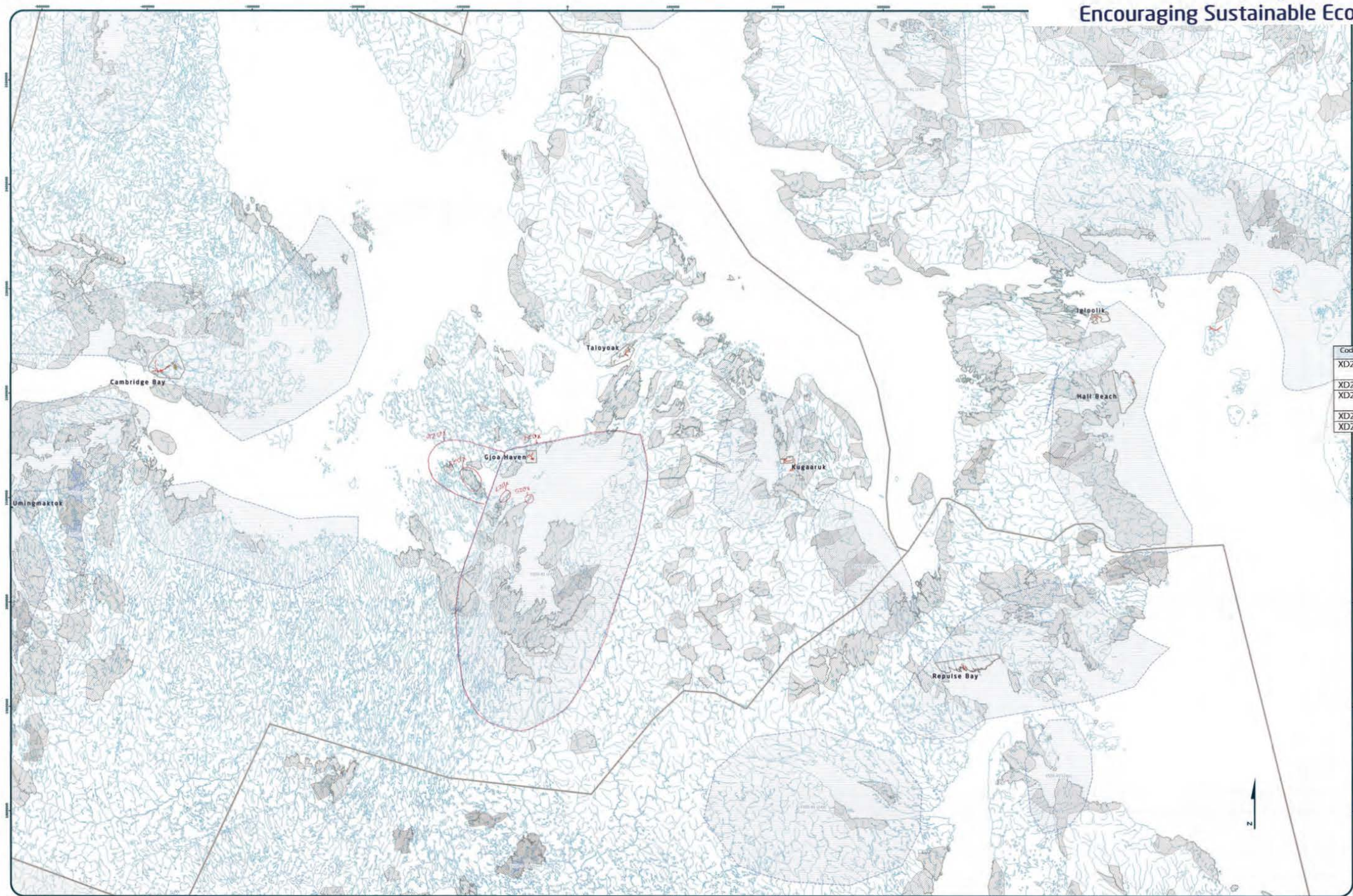


Scale 1:1,000,000





Gjoa Haven - Group 2 Results  
Encouraging Sustainable Economic Development



Designations	Permitted Uses	Prohibited Uses
Residential	Residential, Commercial, Industrial, Recreational, etc.	Industrial, Commercial, etc.
Commercial	Commercial, Industrial, Recreational, etc.	Industrial, Commercial, etc.
Industrial	Industrial, Recreational, etc.	Industrial, Commercial, etc.
Recreational	Recreational, etc.	Industrial, Commercial, etc.

Code	Comments
XD24	7 rivers where the fish swim up. Back River in this area and there are a lot of fish.
XD25	Particular sport fishing spot
XD26	Commercial fishing/no specific spot though. Not as many fish as there used to be.
XD27	Sports fishing in this area
XD28	Sports fishing and tourism

Signature of Mayor

Signature of Regional Planning Commission

Signature of Regional Planning Commission

Code	Comments
1	
2	
3	
4	
5	
6	
7	
8	
9	
10	
11	
12	
13	
14	
15	
16	
17	
18	
19	
20	

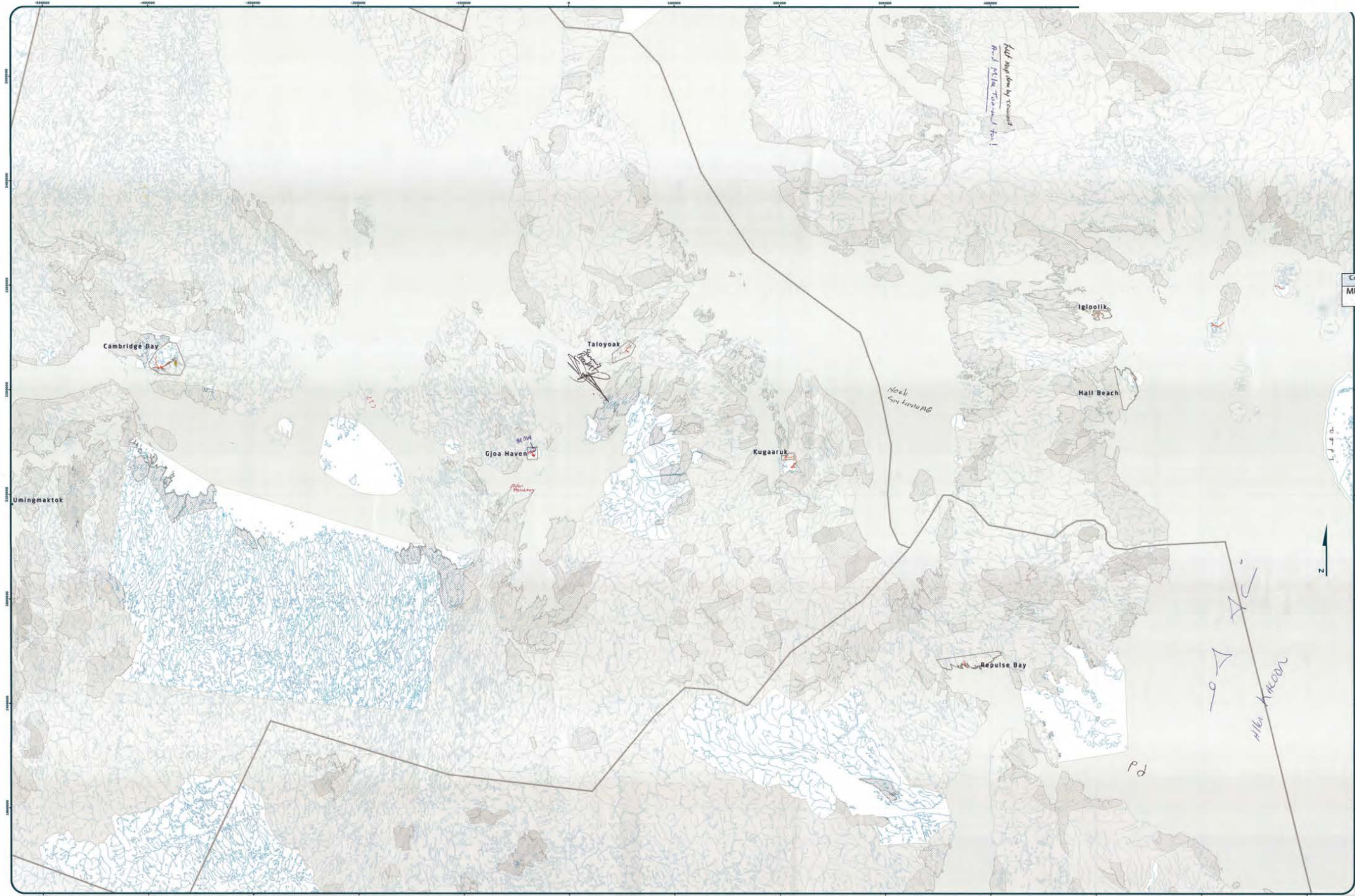
Coordinate System: EPSG 43264 UTM  
Projection: Lambert Conformal Conic  
Datum: North American 1983  
False Easting: 500000  
False Northing: 500000  
Central Meridian: -60.0000  
Standard Parallel 1: 49.0000  
Standard Parallel 2: 77.0000  
Latitude Of Origin: 49.0000  
Units: Meter



Gjoa Haven - Group 1 Results  
Mixed Use

MIXED USE (MU)

Scale 1:1,000,000



Designations	Permitted Uses	Proposed Uses

Code	Comments
MU38	Dewline posing danger to Gjoa Haven because it is so close

Community: \_\_\_\_\_  
Region: \_\_\_\_\_  
Date: \_\_\_\_\_  
Community Plan: \_\_\_\_\_  
Map # \_\_\_\_\_

Signatures of the Community (signs in parenthesis)  
Representing mapping system or information:

1.	16.
2.	17.
3.	18.
4.	19.
5.	20.
6.	21.
7.	22.
8.	23.
9.	24.
10.	25.
11.	26.
12.	27.
13.	28.
14.	29.
15.	30.

Signature of Mapper: \_\_\_\_\_



Coordinate System: EPSG 42304 LCC  
Projection: Lambert Conformal Conic  
Datum: North American 1983  
False Easting: 0.0000  
False Northing: 0.0000  
Central Meridian: -95.0000  
Standard Parallel 1: 49.0000  
Standard Parallel 2: 77.0000  
Latitude Of Origin: 49.0000  
Units: Meters

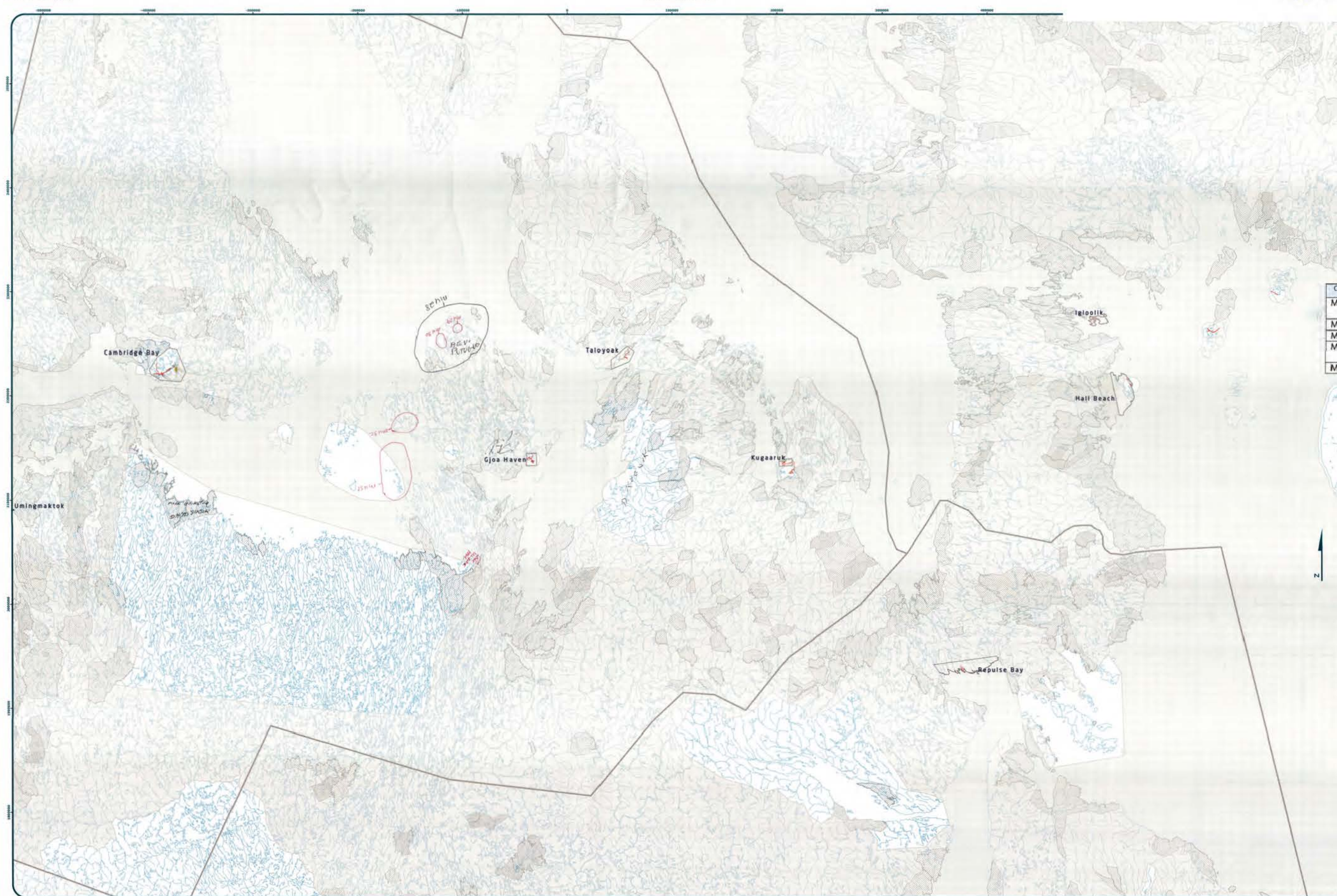
Working Draft Sub-regional map data sources:  
For Land Use Designations and Recommendations sources see draft Nunavut Land Use Plan and background information data source documents.  
Map data created by utilizing Geomatics Institute of Canada (GIC) data and other data sources including:  
500 scales in use. Land outside of Nunavut, including of Gjoa Haven, Administrative boundaries, combined with municipal boundaries, provided by Natural Resources Canada (NRC).  
Map data created by utilizing of Nunavut, National Parks from Parks Canada.  
Data for areas within municipal boundaries obtained from Natural Resources Canada (NRC).  
This map is to be used for reference purposes only by the NRC.  
Any further use of this map or data therein must be authorized by contacting the Nunavut Planning Commission at (867) 969-4625 or email [nrc@nrc.com](mailto:nrc@nrc.com).  
Wednesday, March 12, 2014

EAST KITIKMEOT

Scale 1:1,000,000

NPC Regional Map Series





Designations	Permitted Uses	Prohibited Uses
...	...	...

Code	Comments
MU28	Polar bear hunting area – where his parent spent a lot of time hunting polar bear.
MU29	Denning area for Polar Bear
MU30	Denning area for Polar Bear
MU31	Bearded seal, seal for hunting used for dog food.
MU32	Seals and bearded seals in the area

[illegible]Downloaded At: 11:53 11 September 2009  
 Downloaded By: University of Bath  
 User: 130.237.165.40

Community: \_\_\_\_\_  
 Locality: \_\_\_\_\_  
 Region: \_\_\_\_\_  
 Date: \_\_\_\_\_  
 Community PMO: \_\_\_\_\_  
 Map # \_\_\_\_\_

*Signatures of the Community (only in permission)*

1.	14.
2.	15.
3.	16.
4.	17.
5.	18.
6.	19.
7.	20.
8.	21.
9.	22.
10.	23.
11.	24.
12.	25.
13.	26.
14.	27.
15.	28.
	29.
	30.

Signature of Manager: \_\_\_\_\_




 Coordonnée Système: EPSG:42304 UCC  
 Projection: Lambert Conformal Conic  
 Datum: North American 1983  
 False Easting: 0.0000  
 False Northing: 0.0000  
 Central Meridian: -45.0000  
 Standard Parallel 1: 49.0000  
 Standard Parallel 2: 77.0000  
 Latitude Of Origin: 49.0000  
 Units: Meter

Marking Dutch sub-regional map data into  
Land Use Plans and background  
material data source documents

Hilbode created by utilizing Swiss mapping in Hilbode townships of CSH use Fortuna water bodies  
created by merging at 1:250,000 SWI-shapes in Nominatim, version 2.6, and selecting of waterbodies in  
50 hectares in size. Land outside of Hilbode, County of Quebec, Administrative Regions of  
the draft regional boundaries, related to National Interest Association jurisdictions, combined with municipal  
boundaries, prepared by Natural Resources Canada electoral data, met Ouellet Landi County of Nain  
territorial boundaries. Territorial parts from the Government of Nunavut, Northwest Territories  
Data for areas within municipal boundaries obtained from Natural Resources Canada electoral data  
This map is to be used for reference purposes only by the  
Any further use of this map or data therein must be authorized by contacting the Nunavut Planning  
Commission at (867)785-4625 or email [nunavutplanning@nunavut.ca](mailto:nunavutplanning@nunavut.ca)  
Wednesday, March 12, 2020



## Appendix 4: Follow-up Meeting

The NPC returned to the community and reviewed a draft version of this report with the Hamlet Council, Hunters and Trappers Organization, and the Community Beneficiary Committee. The meeting included:

- A presentation of a draft version of this report
- An overview of the mapped information that was recorded for each topic:
  - Protecting and Sustaining the Environment
  - Encouraging Conservation Planning
  - Building Healthier Communities
  - Encouraging Sustainable Economic Development
  - Mixed Use
- General discussion and comments including:
  - Opportunities to provide additional comments.
  - “It is good to have people come into our community and do a proper consultation before decisions are made”
  - “It is good to have Nunavummiut talking to us and looking after our land”