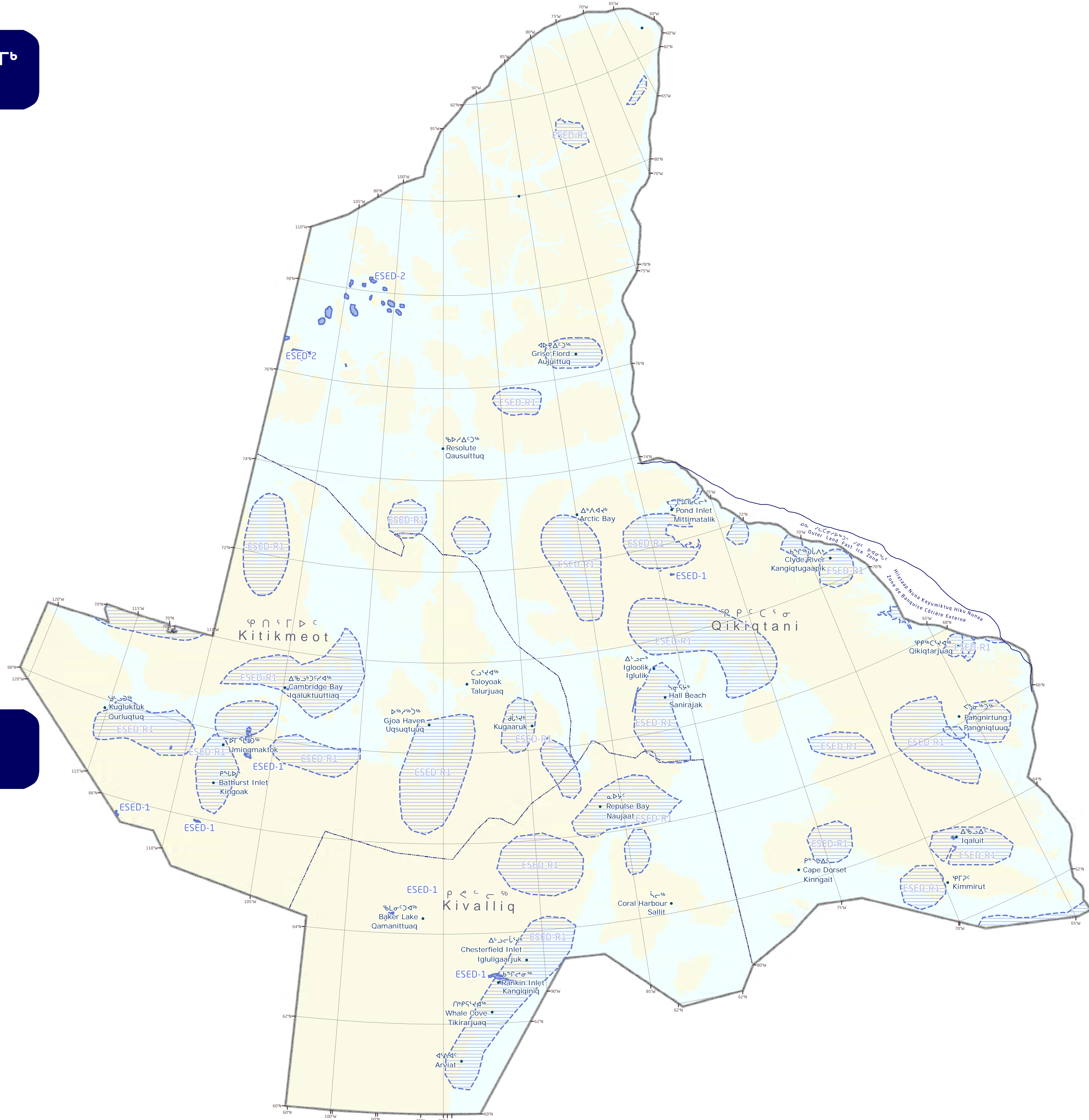


[illegible]

በኤፍኤርዲሲቲ ለጊዜ ምዕራፍ ለጊዜ ምዕራፍ ለጊዜ ምዕራፍ ለጊዜ ምዕራፍ

[illegible]

**ESED-2** Ծագագուստ, Կենտրոն, Կապակցված Լադոն Բաժնի Գրասենյակ

[illegible]

1:4,500,000

[illegible]

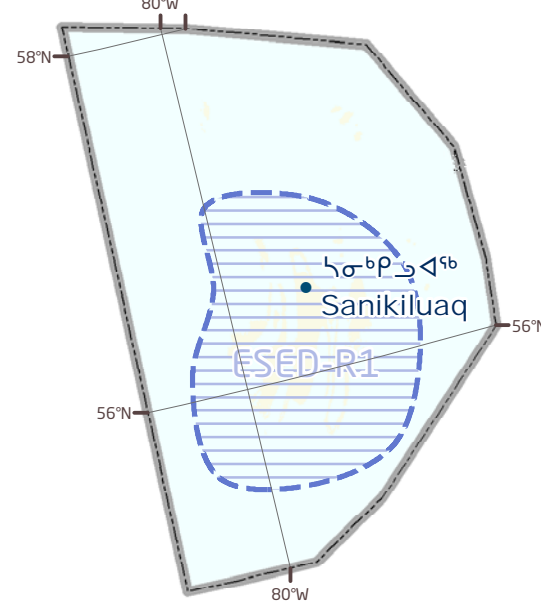
For Data Sources see Draft Nunavut Land Use Plan (DNLUP).

Sources des données : Consulter l'ébauche du Plan d'aménagement du Nunavut (EPAN).

Projection: Iturninginga: Canada Lambert Conformal Conic, NAD83 Projection: Projection conique conforme de Lambert (Canada), NAD83  
North is up and follows gridlines

Tununng tatpaunngauyuq maliktaalu naunaitkutingit nalruyunut. Le Nord est en haut de la page et suit le quadrillage.

ᐅᓂᑦ; ᐱᓂ 29, 2012 Date: June 29, 2012 Ublua: Imarugtiwia 29, 2012 Date: 29 juin 2012



## Chapter 5: Encouraging Sustainable Economic Development (ESED)

Designations	Permitted Uses	Prohibited
<p>1. <b>Designations</b></p> <p>2. <b>Permitted Uses</b></p> <p>3. <b>Prohibited</b></p>	<p>1. <b>Designations</b></p> <p>2. <b>Permitted Uses</b></p> <p>3. <b>Prohibited</b></p>	<p>1. <b>Designations</b></p> <p>2. <b>Permitted Uses</b></p> <p>3. <b>Prohibited</b></p>

**ESED-1** Mining, Remediation and Reclamation Activities, Roads, Railways, Utilities and Corridors

**ESED-2** Oil and gas, Remediation and Reclamation Activities

## Recommendations

**ESED=R1** Project Proposals located in an area of commercial fishery potential should take into account impacts that may reduce the potential of the area.


## Ilangani 5: Atuliqtitauniq Ikayuutauyuq Maniliqinirmut Pivalliani (ESED)

Atinga                      Pitquyauhimayut                      Pitquyauhimanngittut

**ESED-1** Uyarakhiuqniq, ihuarhainiq  
Nutaanguqtiriniingalu Huilukaarniit,  
Apqutit, Akhaluutiryuat,  
Aulapkaitjutingitlu Pipkaitjutingitlu

**ESED-2** Urhuqyuaq kaasiliqlu,  
ihuarhainiq nutaanguqtiriniqlu  
Hulilukaarniit

Angirhimayut

 Havauhikhaq Tukhiurutingit ittuq uumani Nunagiyanga maniliurnic  
iqalukhiurniqmut pipkaiyukhaugaluq ikayuutautigiami  
ayurhautigiyauyt ikikliyuurniqnaqtuq talvunnga.

## Chapitre 5 : Encourager le développement économique durable (ESED)

Affectations	Utilisations autorisées	Utilisations interdites
--------------	-------------------------	-------------------------

**ESED-1** Activités minières, activités de restauration et de remise en état routes, voies ferrées, utilités publiques et corridors

**ESED-2** Activités pétrolières et gazières, activités de restauration et de remise en état

## Recommendations

**ESED-R1** Les projets proposés dans un secteur potentiel de pêche commerciale devraient tenir compte des impacts qui pourraient réduire le potentiel du secteur.