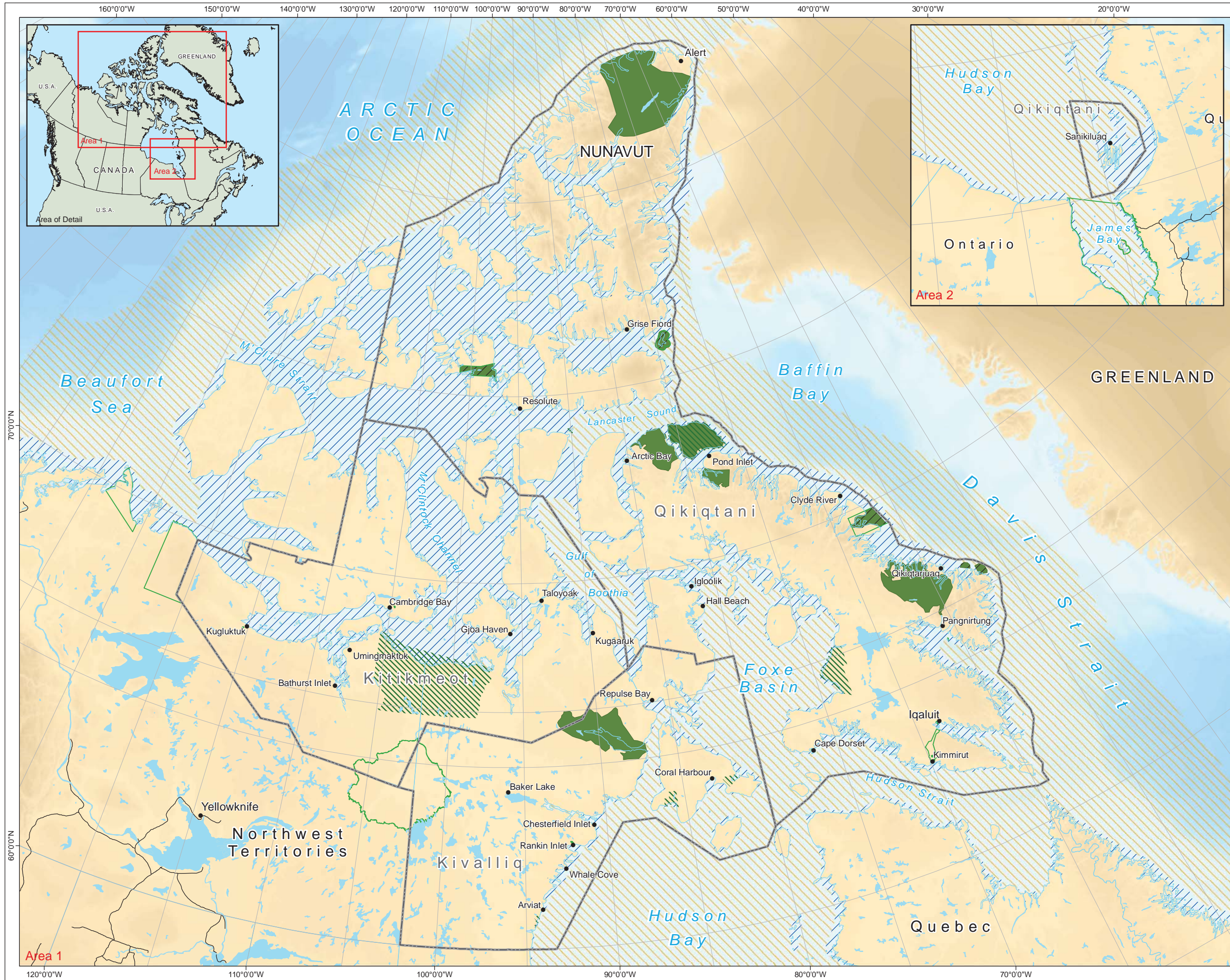


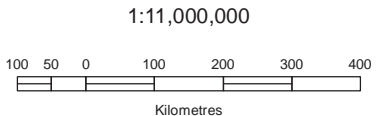
APPENDIX B

Figures of Wildlife Habitat



Nunavut, Canada
Figure 4.1-1
Ringed Seal Range and
Important Habitat in Nunavut

- Common in Summer¹
- Common in Winter and Pupping Habitat¹
- Base Features**
 - Community
 - Road
 - Conservation Area
 - Lakes / River
 - Nunavut Regional Boundary
 - National Park
 - Migratory Bird Sanctuary
 - National Wildlife Area

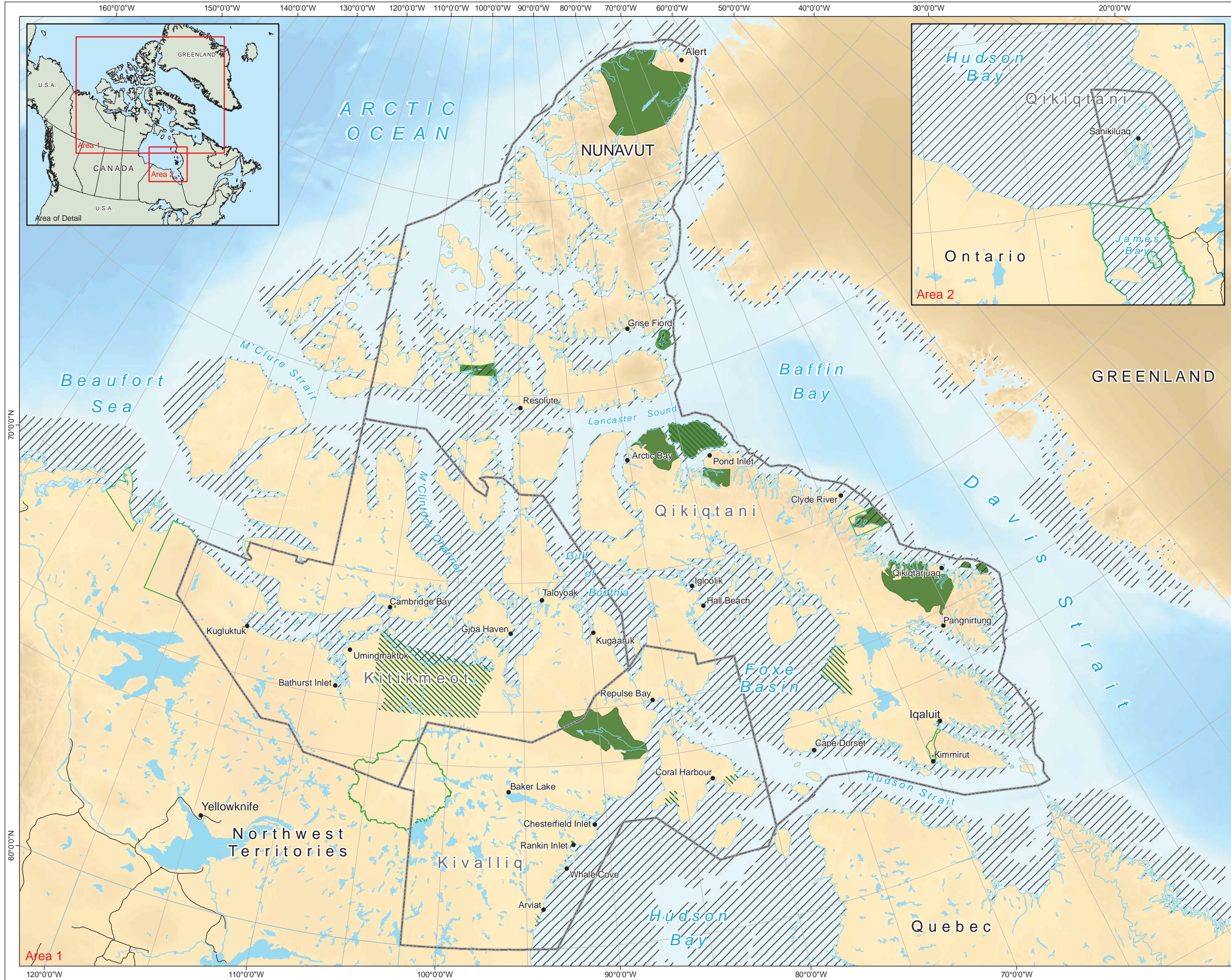


Prepared By:
Nunami-Stantec

References:
¹ Stephenson, S.A. and Hartwig, L (Eds.). 2010. The Arctic Marine Workshop. Winnipeg, Manitoba. Freshwater Institute, Fisheries and Oceans Canada. Canadian Manuscript Report of Fisheries and Aquatic Sciences 2934. 67 pp.
(shape files provided by DFO to Nunami Stantec). January 20, 2012.

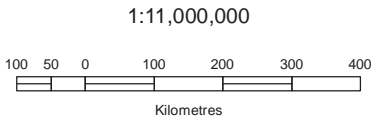


Data Sources: Geographic Atlas, GNDs, Parks Canada
Projection: Canada Lambert Conformal Conic, NAD83
Date: January 27 2012
Filename: 123110328_NPC_Fig04_1_1_RingedSeal.mxd
Produced By: R Stohmann
Verified By: MM
Revision: 05



Nunavut, Canada
Figure 4.1-2
Bearded Seal Range and
Important Habitat in Nunavut

- /// Common¹
- Base Features**
- Community
 - Road
 - Conservation Area
 - Lakes / River
 - Nunavut Regional Boundary
 - National Park
 - ▨ Migratory Bird Sanctuary
 - National Wildlife Area



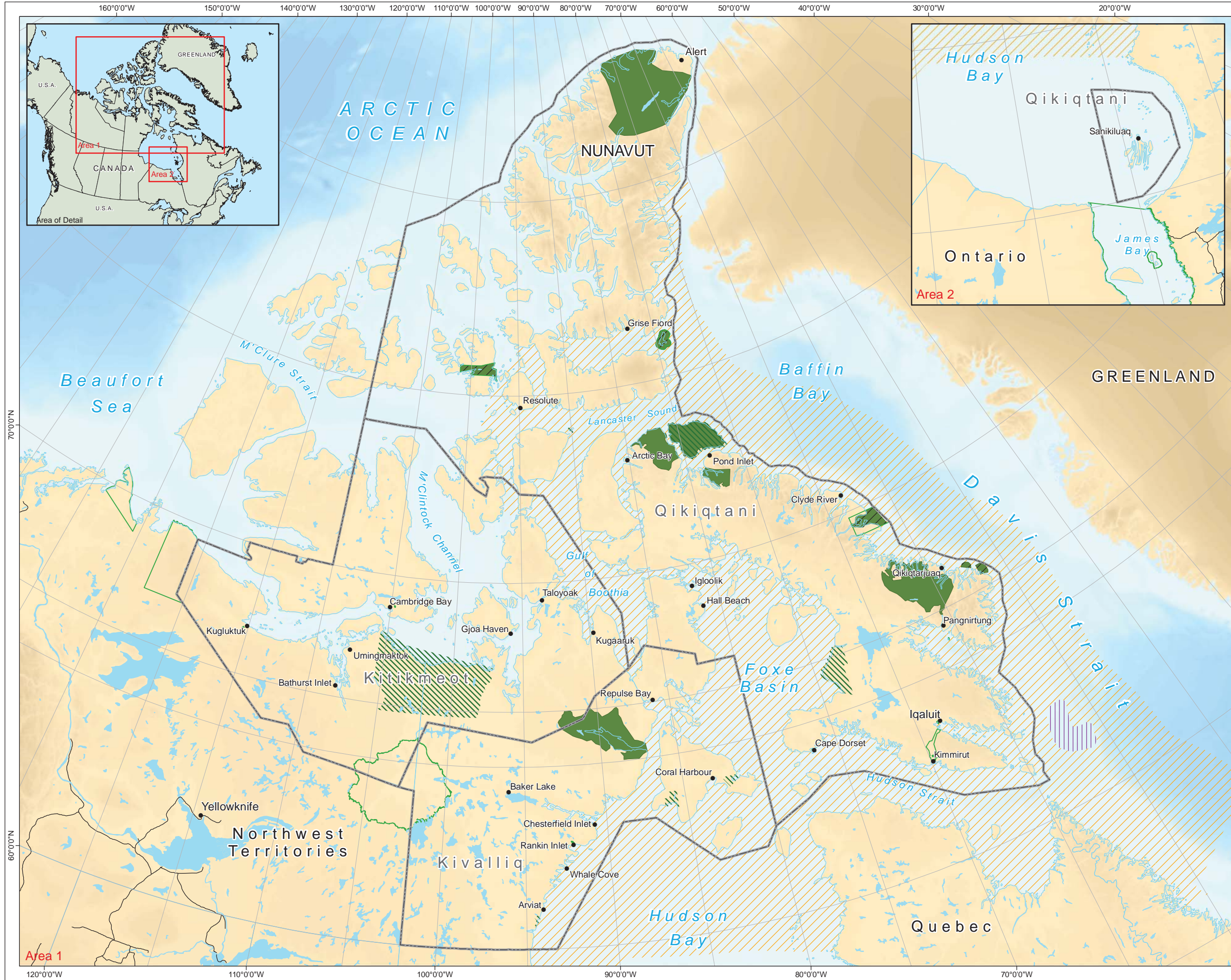
Prepared By:
Nunami-Stantec

References:

¹ Stephenson, S.A. and Hartwig, L (Eds.). 2010. The Arctic Marine Workshop. Winnipeg, Manitoba. Freshwater Institute, Fisheries and Oceans Canada. Canadian Manuscript Report of Fisheries and Aquatic Sciences 2934. 67 pp.
(shape files provided by DFO to Nunami Stantec). January 20, 2012.

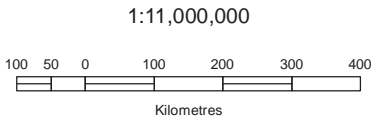


Data Sources: Geogratis Atlas, GNDnE, Parks Canada
Date: January 27 2012
Filename: 123110328_NPC_Fig04.1.2_BeardedSeal.mxd
Produced By: R Stohmann
Verified By: MM
Revision: 05



Nunavut, Canada
Figure 4.1-3
Harp Seal Range and
Important Habitat in Nunavut

- Common in Summer¹
- Whelping Area¹
- Base Features**
 - Community
 - Road
 - Conservation Area
 - Lakes / River
 - Nunavut Regional Boundary
 - National Park
 - Migratory Bird Sanctuary
 - National Wildlife Area



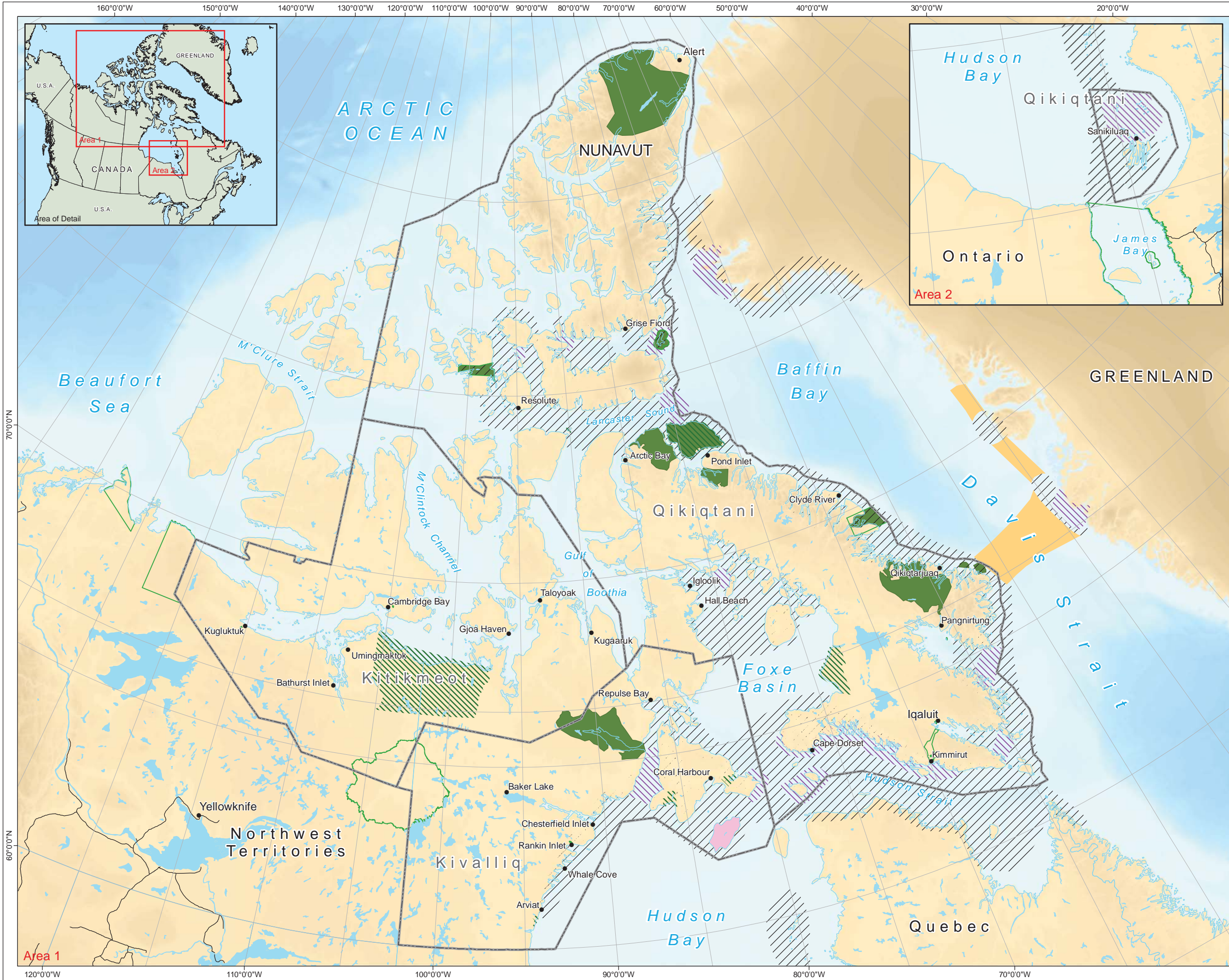
Prepared By:
Nunami-Stantec

References:

¹ Stephenson, S.A. and Hartwig, L (Eds.). 2010. The Arctic Marine Workshop. Winnipeg, Manitoba. Freshwater Institute, Fisheries and Oceans Canada. Canadian Manuscript Report of Fisheries and Aquatic Sciences 2934. 67 pp.
(shape files provided by DFO to Nunami Stantec). January 20, 2012.

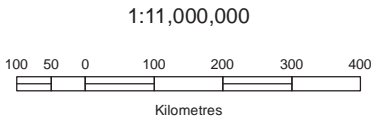


Data Sources: Geogratis Atlas, GNDnE, Parks Canada
Projection: Canada Lambert Conformal Conic, NAD83
Date: January 27 2012
Filename: 123110328_NPC_Fig04_1_3_HarpSeal.mxd
Produced By: R Stohmann
Verified By: MM
Revision: 05



Nunavut, Canada
Figure 4.1-4
Walrus Range and
Important Habitat in Nunavut

- Known Range³
 - Transition Zone³
 - Common in Winter³
 - Island with Largest Known Haul-out Site^{1,2}
- Base Features**
- Community
 - Road
 - Conservation Area
 - Lakes / River
 - Nunavut Regional Boundary
 - National Park
 - Migratory Bird Sanctuary
 - National Wildlife Area



Prepared By:
Nunami-Stantec

References:

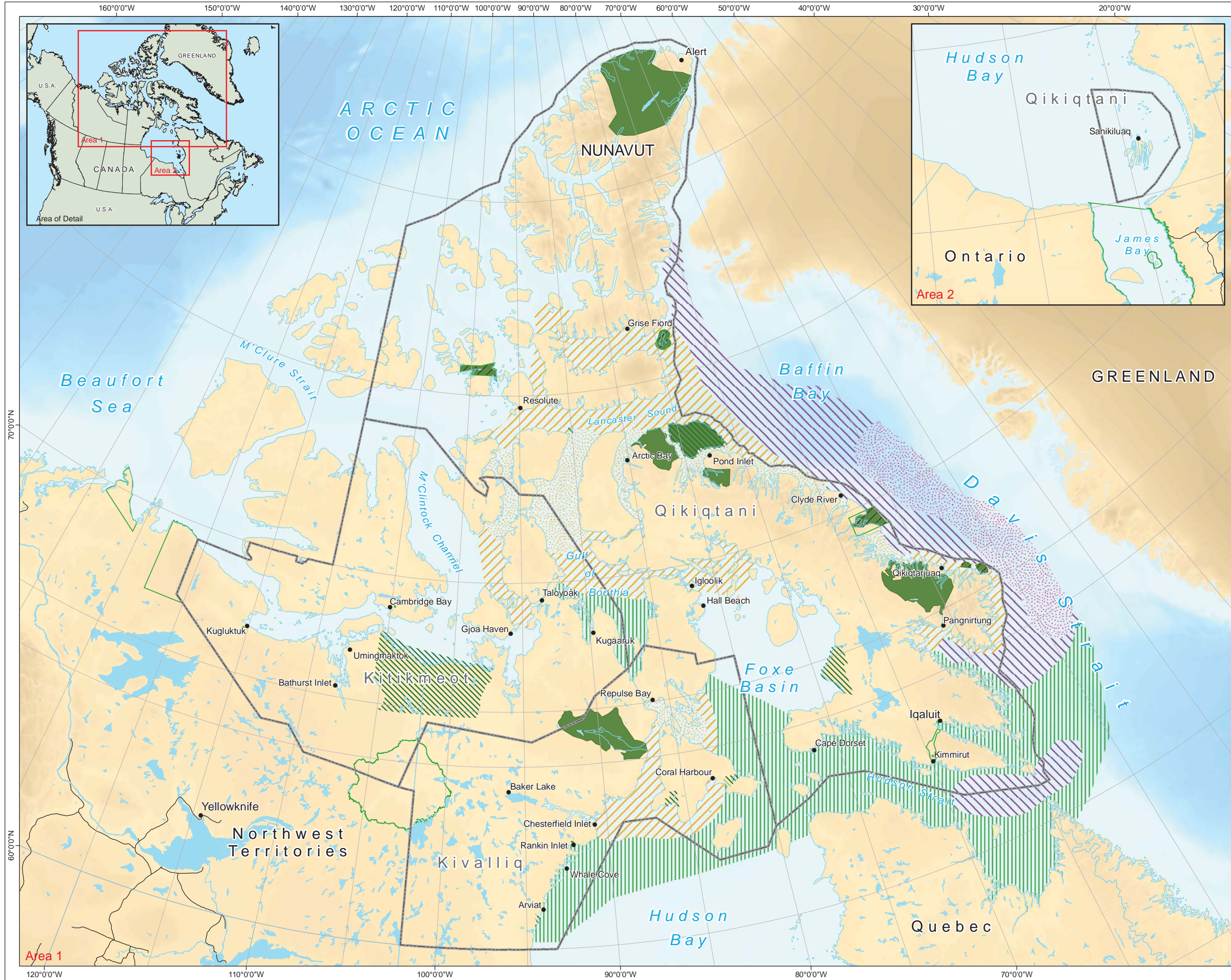
¹COSEWIC. 2006. Assessment and update status report on the Atlantic Walrus *Odobenus rosmarus rosmarus* in Canada. Committee on the Status of Endangered Wildlife in Canada. Ottawa, ON. ix + 65pp.

²DFO. 2002. Atlantic walrus. Science Stock Status Report EF-21 Department of Fisheries and Oceans.

³Stephenson, S.A. and Hartwig, L (Eds.). 2010. The Arctic Marine Workshop. Winnipeg, Manitoba. Freshwater Institute, Fisheries and Oceans Canada. Canadian Manuscript Report of Fisheries and Aquatic Sciences 2934. 67 pp.
(shape files provided by DFO to Nunami Stantec). January 20, 2012.



Data Sources: Geogratis Atlas, GNDcE, Parks Canada
Projection: Canada Lambert Conformal Conic, NAD83
Date: January 27 2012
Filename: 123110328_NPC_Fig04.1_4_Walrus.mxd
Produced By: R Stohmann
Verified By: MM
Revision: 05



Nunavut, Canada
Figure 4.1-5
Narwhal Range and
Important Habitat in Nunavut

- Known Range¹
 - Common in Summer¹
 - Summer Range¹
 - Common in Winter¹
 - Winter Range¹
- Base Features**
- Community
 - Road
 - Conservation Area
 - Lakes / River
 - Nunavut Regional Boundary
 - National Park
 - Migratory Bird Sanctuary
 - National Wildlife Area

1:11,000,000

100 50 0 100 200 300 400

Kilometres

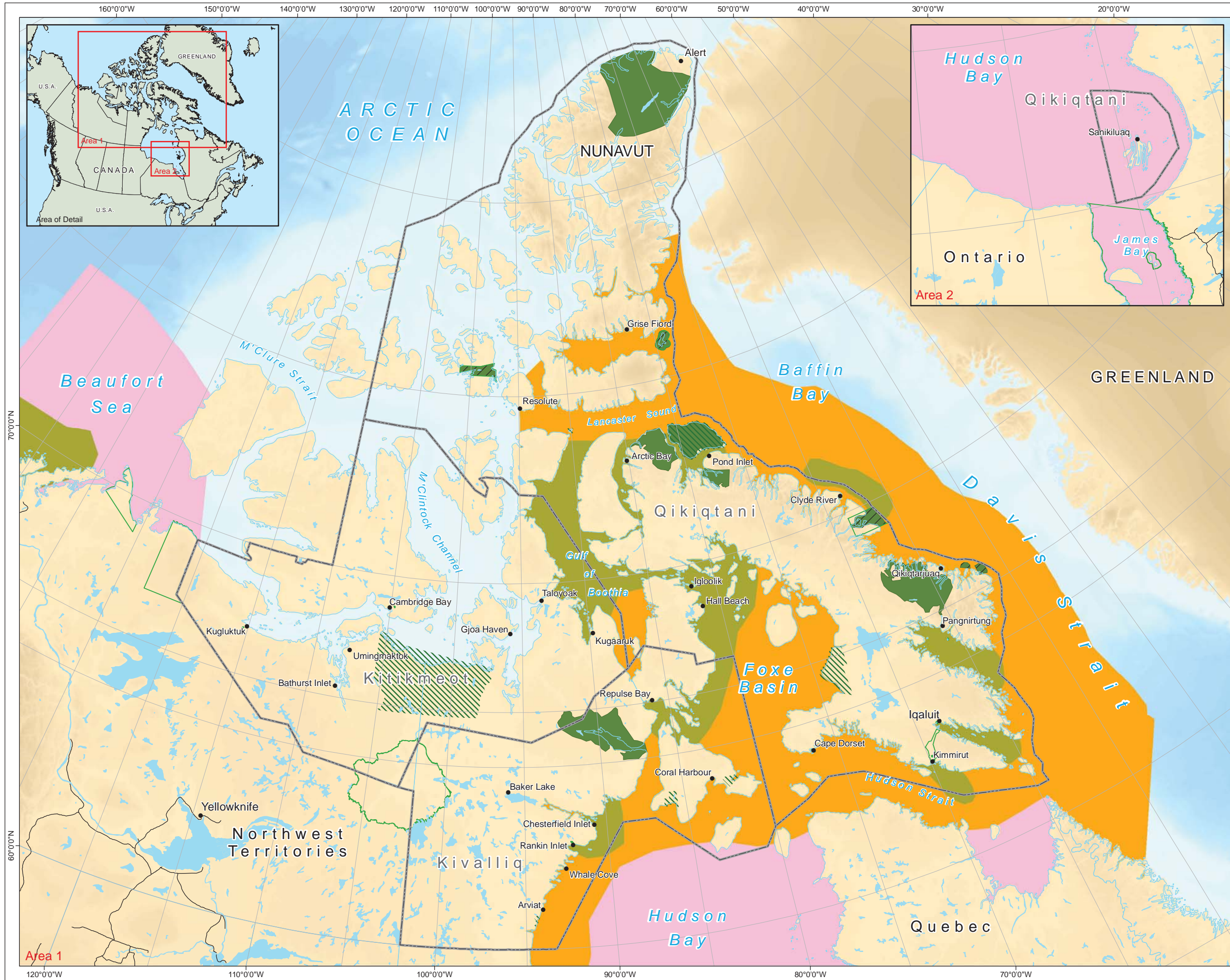
Prepared By:
Nunami-Stantec

References:

¹ Stephenson, S.A. and Hartwig, L (Eds.). 2010. The Arctic Marine Workshop. Winnipeg, Manitoba. Freshwater Institute, Fisheries and Oceans Canada. Canadian Manuscript Report of Fisheries and Aquatic Sciences 2934. 67 pp. (shape files provided by DFO to Nunami Stantec). January 20, 2012.

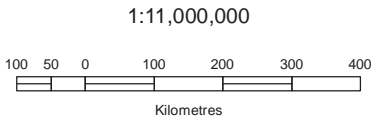


Data Sources: Geogratis Atlas, GNDnE, Parks Canada
Projection: Canada Lambert Conformal Conic, NAD83
Date: January 27 2012
Filename: 123110328_NPC_Fig04_1_5_Narwhal.mxd
Produced By: R Stohmann
Verified By: MM
Revision: 05



Nunavut, Canada
Figure 4.1-6
Killer Whale Range and
Important Habitat in Nunavut

- Common¹
- Uncommon¹
- Rare¹
- Base Features**
 - Community
 - Road
 - Conservation Area
 - Lakes / River
 - Nunavut Regional Boundary
 - National Park
 - Migratory Bird Sanctuary
 - National Wildlife Area

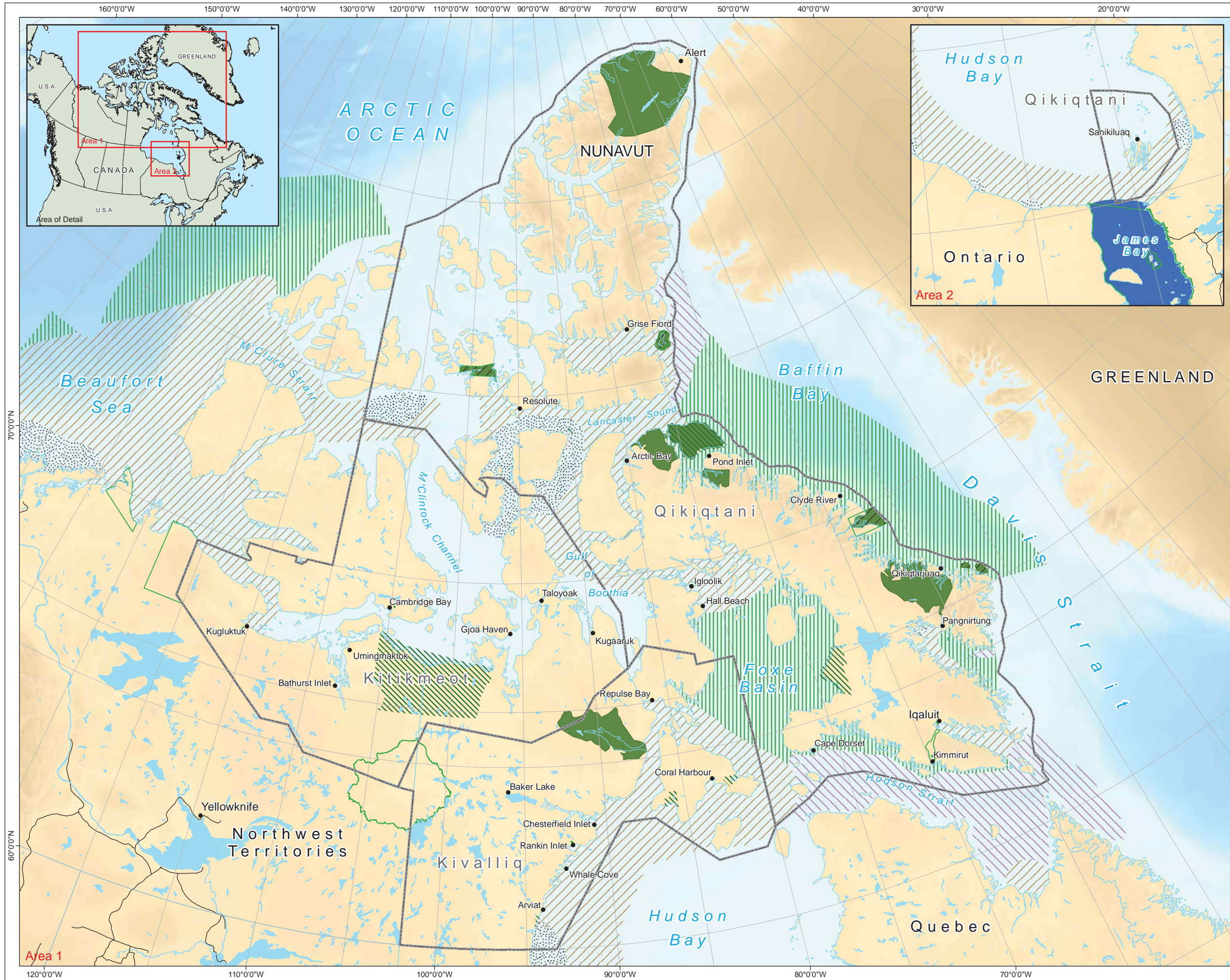


Prepared By:
Nunami-Stantec

References:
¹ Stephenson, S.A. and Hartwig, L (Eds.). 2010. The Arctic Marine Workshop. Winnipeg, Manitoba. Freshwater Institute, Fisheries and Oceans Canada. Canadian Manuscript Report of Fisheries and Aquatic Sciences 2934. 67 pp.
(shape files provided by DFO to Nunami Stantec). January 20, 2012.



Data Sources: Geogratis Atlas, GNDoe, Parks Canada
Projection: Canada Lambert Conformal Conic, NAD83
Date: January 27 2012
Filename: 123110328_NPC_Fig04_1_6_KillerWhale.mxd
Produced By: R Stohmann
Verified By: MM
Revision: 05



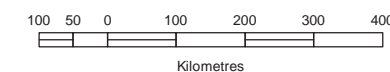
Nunavut, Canada
Figure 4.1-7
Beluga Whale Range and
Important Habitat in Nunavut

- Known Range¹
- Common Year Round¹
- Summer Range¹
- Common in Summer¹
- Winter Range¹

Base Features

- Community
- Road
- Conservation Area
- Lakes / River
- Nunavut Regional Boundary
- National Park
- Migratory Bird Sanctuary
- National Wildlife Area

1:11,000,000



Prepared By:
Nunami-Stantec

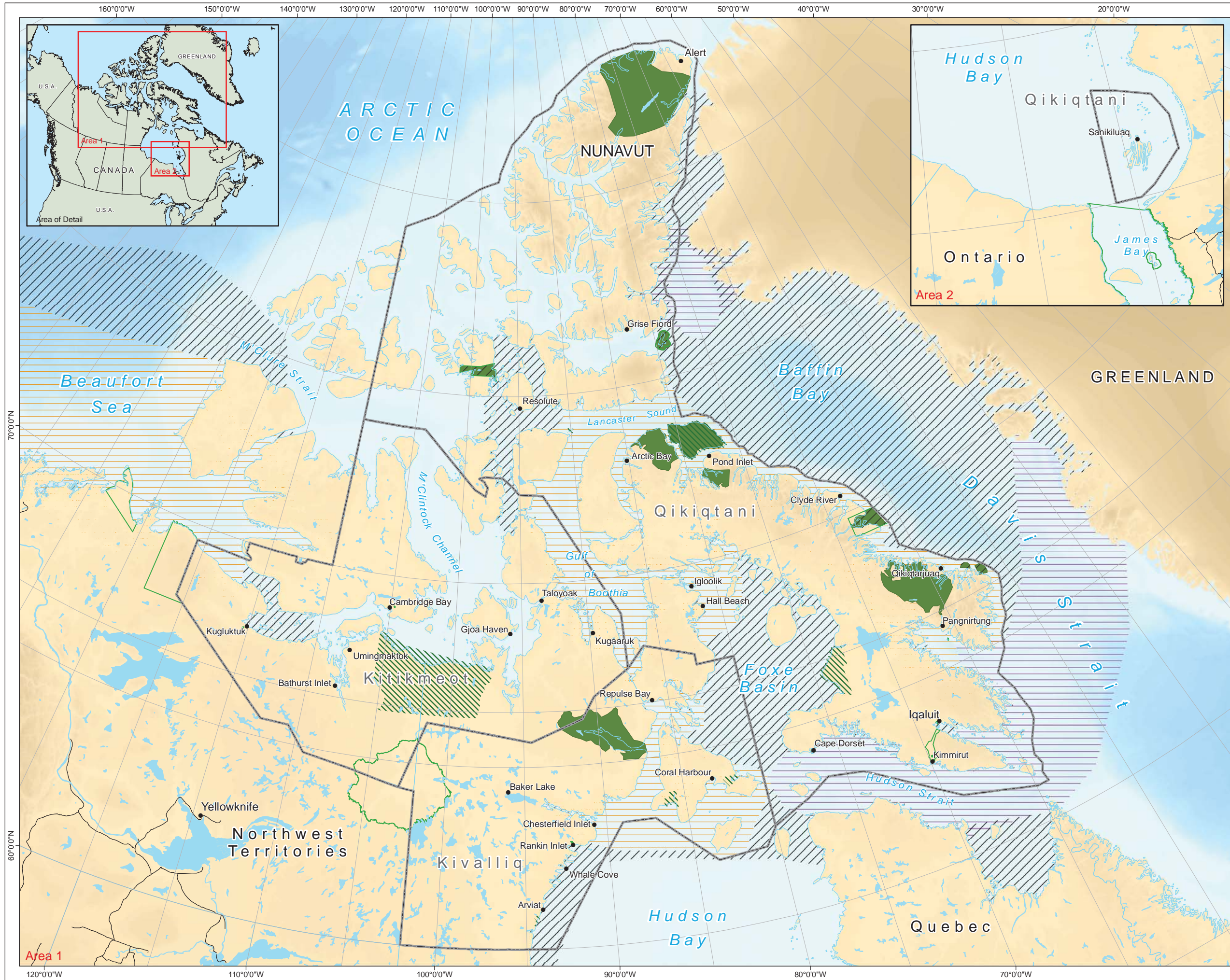
References:

¹ Stephenson, S.A. and Hartwig, L (Eds.). 2010. The Arctic Marine Workshop. Winnipeg, Manitoba. Freshwater Institute, Fisheries and Oceans Canada. Canadian Manuscript Report of Fisheries and Aquatic Sciences 2934. 67 pp.
(shape files provided by DFO to Nunami Stantec). January 20, 2012.

NUNAMI
STANTEC LIMITED



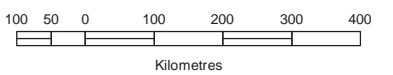
Data Sources: Geogratis Atlas, GNDnE, Parks Canada
Projection: Canada Lambert Conformal Conic, NAD83
Date: January 27 2012
Filename: 123110328_NPC_Fig04_1_7_BelugaWhale.mxd
Produced By: R Stohmann
Verified By: MM
Revision: 05



Nunavut, Canada
Figure 4.1-8
Bowhead Whale Range and
Important Habitat in Nunavut

- Common in Summer^{1,4}
- Common in Winter^{1,2,3,4}
- Range^{1,4}
- Base Features**
 - Community
 - Road
 - Conservation Area
 - Lakes / River
 - Nunavut Regional Boundary
 - National Park
 - Migratory Bird Sanctuary
 - National Wildlife Area

1:11,000,000



Prepared By:
Nunami-Stantec

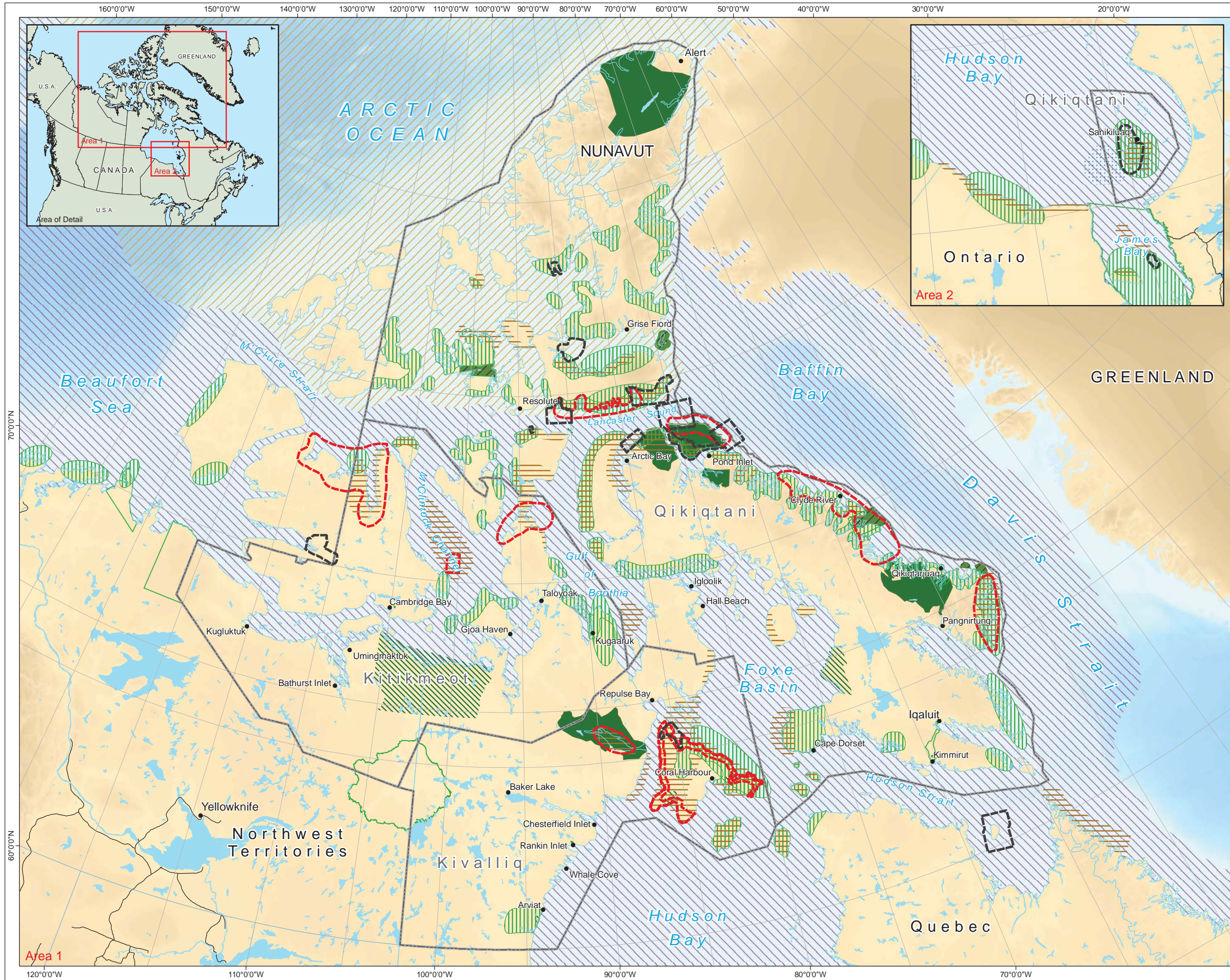
References:

¹COSEWIC. 2009. COSEWIC assessment and update status report on the bowhead whale *Balaena mysticetus*. Bering-Chukchi- Beaufort population and Eastern Canada-West Greenland population, in Canada. Committee on the Status of Endangered Wildlife in Canada. Ottawa. vii + 49 pp.
*digitized by Nunami Stantec 2010

²Dueck, L., S. Ferguson, B. Wheeler, S.P. Luque and M. Gilbert. (in press). Habitat use by bowhead whales of the eastern arctic Canada.
*digitized by Nunami Stantec 2010

³Richard, P.R., J.R. Orr, R. Dietz and L. Dueck. 1998. Sightings of belugas and other marine mammals in the North Water, late March 1993. Arctic 51:1-4.
*digitized by Nunami Stantec 2010

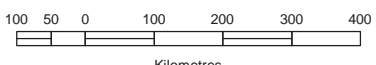
⁴Stephenson, S.A. and Hartwig, L (Eds.). 2010. The Arctic Marine Workshop. Winnipeg, Manitoba. Freshwater Institute, Fisheries and Oceans Canada. Canadian Manuscript Report of Fisheries and Aquatic Sciences 2934. 67 pp.
(shape files provided by DFO to Nunami Stantec). January 20, 2012.



Nunavut, Canada
Figure 4.1-9
Polar Bear Range and
Important Habitat in Nunavut

- Denning Area^{3,4}
- Summer Range³
- Winter Range³
- Summer Retreat⁴
- IBP-Polar Bear Habitat²
- WASI-Polar Bear Habitat¹
- Base Features**
 - Community
 - Road
 - Conservation Area
 - Lakes / River
 - Nunavut Regional Boundary
 - National Park
 - Migratory Bird Sanctuary
 - National Wildlife Area

1:11,000,000



Prepared By:
Nunami-Stantec

References:

- ¹Ferguson, S.H. 1995. Wildlife Areas of Special Interest to the Department of Renewable Resources. Wildlife Management Division, Department of Renewable Resources, Government of the Northwest Territories. Nunavut Wildlife Management Board version adapted from original 1987 publications. 80 pp.
*digitized by Government of Nunavut 2005
- ²Nettleship, D.N. and P.A. Smith. 1975. Ecological sites in northern Canada. Canadian Committee for the International Biological Programme. 330 pp.
*digitized by Government of Nunavut 2005
- ³Stephenson, S.A. and Hartwig, L (Eds.). 2010. The Arctic Marine Workshop. Winnipeg, Manitoba. Freshwater Institute, Fisheries and Oceans Canada. Canadian Manuscript Report of Fisheries and Aquatic Sciences 2934. 67 pp.
(shape files provided by DFO to Nunami Stantec). January 20, 2012.
- ⁴Urquhart, D.R. and R.E. Schweinsburg. 1984. Polar bear life history and known distribution of polar bear in the Northwest Territories up to 1981. Northwest Territories Renewable Resources. Yellowknife NWT. 70 pp.
*digitized by Government of Nunavut 2005



Data Sources: Geogratis Atlas, GNDnE, Parks Canada
Projection: Canada Lambert Conformal Conic, NAD83
Date: January 27 2012
Filename: 123110328_NPC_Fig04_1_9_PolarBear.mxd
Produced By: R Stohmann
Verified By: MM
Revision: 05