



ᓄᓇᓂᓴᓯ ᐸᓴᓇᐃᓯᓴ
Nunavunmi Parnaiyiit
Nunavut Planning Commission
Commission d'Aménagement du Nunavut

Summary of Community Meetings on the 2016 Draft Nunavut Land Use Plan

ARVIAT

January 23, 2020



Contents

1. Introduction	3
1.1 Context.....	3
1.2 Purpose	3
1.3 Methodology.....	3
1.4 Public Awareness	4
1.5 Follow Up	4
2. Breakout Group Questions and Participant Responses.....	5
1. Key Migratory Bird Habitat	5
2. Community Drinking Water Supply	5
3. Polar Bear Denning	6
4. Caribou Calving Areas	6
5. Caribou Post Calving Areas	7
6. Caribou Fresh Water Crossing.....	9
7. Final wrap up Question.....	10
Appendix A: Breakout Group Reference Maps.....	11
Appendix B: Breakout Group Map Revisions.....	14
Map 1: Additional Community Watershed Area	
Map 2: Additional Polar Bear Denning Areas	
Map 3: Additional Caribou Fresh Water Crossing Areas	

1. Introduction

1.1 Context

The Nunavut Planning Commission prepared a 2016 Draft Nunavut Land Use Plan (2016 DNLUP) for public comment and consideration. Following the release of the 2016 DNLUP, the Commission received a significant amount of written comments and oral feedback during an in-person public hearing in Iqaluit in March 2017 for communities in the Qikiqtani region as well as transboundary Nunavik communities. In August 2019, the Commission received funding to complete consultations on the 2016 DNLUP by holding Information Sessions under rule 17 of the Commission's new Rules for Public Proceedings in the Kivalliq and Kitikmeot regions.

1.2 Purpose

The purpose of the Information Sessions was to hear the views of community residents on the 2016 DNLUP. This report summarizes feedback received during the Information Sessions held in Arviat and is prepared under rule 15(5) of the *Rules for Public Proceedings*. The purpose of the report is to inform revisions to the 2016 DNLUP ensuring that the plan reflects the priorities and values of residents.

It is important to note that the information contained in this community report will be considered in conjunction with all other feedback when revising the 2016 DNLUP.

1.3 Methodology

During the community visit the following events took place:

- **Elected Officials Meeting;** (10:00-11:00) Attended by Hamlet council and HTO members
 - The Commission Chairperson and staff met with the Hamlet Council and Hunters and Trappers Organization in Council chambers to provide a brief overview of the NPC's role and responsibility in Nunavut's regulatory system, process history, and preparation for the Information Sessions to be held in the afternoon and evening. An opportunity for questions and answers was provided, but no formal feedback on the 2016 DNLUP was provided or recorded during this meeting.
- **Afternoon Information Session;** (1:30 to 4:30) Attended by approximately 30 people, held 1 breakout group.
 - **Posters;** Multi-lingual posters for each chapter of the Draft Plan were posted in the Community Hall for review.
 - **Presentation;** The Commission chairperson and staff provided an introductory presentation that included a brief overview of some background information, the Commission role and responsibility, role in Nunavut's regulatory system, process history, 2016 DNLUP chapter overview, and preparation for breakout groups including the types of questions that would be asked.
 - **Breakout Groups;** Held breakout group discussions to review community-specific maps (see Appendix A) and ask questions on priority issues (see section 2). Recorded oral feedback and mapped suggested revisions and additions to geographic boundaries (see Appendix B)

- **Evening Information Session;** (6:30 to 9:30) Attended by approximately 30 people, held 1 breakout group.
 - Repeat same format as afternoon session

1.4 Public Awareness

Letters of invitation were sent to the Mayor and Council and HTO in advance of the NPC's visit to request a meeting with elected officials, advise of the public meetings and to encourage participation. Follow up phone calls were also made. Public notice of the meetings was provided in the following ways:

- **Nunatsiaq News;** notice of community meetings was posted in the newspaper in advance of the meetings.
- **Community radio;** notices were read by the hosts.
- **Community bulletin boards;** notices were posted on bulletin boards around the community in advance of the meetings.
- **Facebook;** information was posted on the NPC's Facebook page as well as on local community group pages in advance of the meetings.
- **nunavut.ca;** the schedule of community visits, the Draft Plan, and supporting information was available on the Commission's website.

1.5 Follow Up

This summary report will be provided to the Hamlet Council and HTO for review and posted on the NPC's Public Registry for consideration by all participants who may provide comments on it until February 28, 2020. The report and any comments on it will be considered by Commissioners when revising the 2016 DNLUP along with all other feedback that has been received.

2. Breakout Group Questions and Participant Responses

This section summarizes the notes and questions that were used by NPC staff during the breakout groups and well as the participant responses to each question.

1. Key Migratory Bird Habitat

There is one proposed migratory bird habitat areas near Arviat: McConnell River (Ross' Goose and Semipalmated Sandpiper). This is similar to the Migratory Bird Sanctuary for the same species, but covers a larger area. It is listed as a Valued Ecosystem Component. *There are parcels of Inuit Owned Land (surface and subsurface) within the area.*

a. Do you agree that this is key migratory bird habitat? Are the boundaries appropriate?

➤ ***Arviat community participants agreed the McConnell River area is important habitat for migratory birds.***

- Group 1 – Participants agreed that this area is important migratory bird habitat. Birds are moving north out of the Migratory Bird Sanctuary (there are too many birds now in the MBS and they are damaging the landscape).
- Group 2 – Participants agreed that this area is important migratory bird habitat.

b. Do you support the recommended designation for this migratory bird habitat area?

➤ ***Arviat community participants agreed that it is appropriate to identify the McConnell River area as a Valued Component and not have specific guidance for the area.***

- Group 1 - Participants agreed that it is appropriate to identify the area as a Valued Component and not have specific guidance for the area.
- Group 2 – Participants agreed that it is appropriate to identify the area as a Valued Component and not have specific guidance for the area.

2. Community Drinking Water Supply

The 2016 DNLUP identifies the Community Drinking Water supply watershed. The area is designated as a Protected Area and restricts mining, oil & gas, and hydro-electric. The watershed is identified so all users know that what they do in or near the water could end up in homes, but also limits activities that may occur there.

a) Do you think the land use plan should prohibit activities in this area?

➤ ***Arviat community participants agreed that the land use plan should prohibit activities in the drinking water supply watershed.***

- Group 1 – Participants agreed that the watershed should be protected and uses prohibited.
- Group 2 – Participants agreed that the watershed should be protected and uses prohibited.

b) Is there anything else NPC needs to know about how the Drinking Water Supply area can be protected or used by project proponents?

➤ ***Arviat community participants identified additional areas that should be protected for drinking water.***

- Group 1– Community wants protections for the watershed but another nearby watershed is cleaner and should also be protected for future use by the community. May also consider protecting areas near Maguse Lake, as this is so large a camp that it is basically now a satellite community of Arviat. Many cabins and people drink the water there. Some participants also noted that water from outside the marked area to the west also flows into the watershed that is used by the community.
- Group 2 – n/a

3. Polar Bear Denning

Polar bear denning areas have been identified near your community and the 2016 DNLUP identifies them as Valued Components (VEC).

- a) Do you support identifying these areas as Valued Components so proponents and other regulatory authorities will be aware that polar bears may be denning in the area?

➤ ***Arviat community participants agreed that it was appropriate to identify polar bear denning areas as Valued Components and identified additional areas.***

- Group 1– Participants agreed that it is appropriate to identify these areas as Valued Components because polar bear den all over. They say the VEC area should be extended to the south, right to the border.
- Group 2 – Participants agreed that it is appropriate to identify these areas as Valued Components because polar bear den all over. They say the VEC area should be extended to the north along the coast, as far as Whale Cove.

- b) Are there smaller more specific locations within the areas that have been identified where you think the plan should provide more detailed management? If so, what type of management do you think should be included in the plan?

- Group 1– Participants were in agreement that polar bear denning areas should be listed as VECs. Stronger protections are not needed.
- Group 2 – Participants were in agreement that polar bear denning areas should be listed as VECs. Stronger protections are not needed.

4. Caribou Calving Areas

There is Caribou Calving habitat near your community (see map). The 2016 NLUP identified Caribou Calving Areas as sensitive habitat and recommends that these areas be zoned Protected Areas with year-round restrictions on mining, oil & gas exploration, roads, hydro-electrical infrastructures, and quarries. *There are parcels of Inuit Owned Land (surface and subsurface) within the areas and overlapping mineral rights.*

- a. Are the Caribou Calving areas mapped correctly? If No ... then ... describe what changes should be made.

➤ ***Arviat community participants agreed with the caribou calving areas identified in the 2016 DNLUP.***

- Group 1 – Participants agreed that the areas are mapped correctly. No comments on changing the areas
- Group 2 – Participants agreed that the areas are mapped correctly. No comments on changing the areas

b. Do you agree it is necessary to restrict certain uses and activities like mining, oil & gas, roads, hydro-electric infrastructure, and quarries in Caribou Calving areas?

➤ ***Arviat community participants agreed that activities like mining, oil & gas, roads, hydro-electric infrastructure, and quarries should be prohibited in caribou calving grounds.***

- Group 1–Participants agreed that calving areas should be protected from all development. Caribou has been the main diet for thousands of years. Need to keep the herd strong (one of the last healthy herds in the world) and don't want to end up with a quota system like many other communities. Participants noted that they support economic opportunities in other areas and recognize the need for development, but are very concerned with the active mineral interests that already occur in important caribou habitat.
- Group 2 – Participants agreed that calving areas should be protected from all development.

c. Are there other uses or activities that should be restricted?

- Group 1 – Participants noted support for development outside of the calving/post-calving areas.
- Group 2 – no comment

d. If restrictions on uses or activities occur, should they be year-round or seasonal? If seasonal, what time frame would you recommend?

➤ ***Most Arviat community participants recommended that restrictions on caribou calving areas should be year-round, but some felt that seasonal restrictions would be appropriate.***

- Group 1– Most participants support year-round closures, some mentioned seasonal closures. HTO supports year-round protections on all development, in part because there are special plants there that are needed to produce enough milk for calves.
- Group 2 – Most participants support year-round closures

5. Caribou Post Calving Areas

There is Caribou Post-Calving habitat near your community. The 2016 DNLUP identified Caribou Post-Calving Areas as sensitive habitat and recommends that these areas be zoned Protected Areas with year-round restrictions on mining, oil & gas exploration, roads, hydro-electrical infrastructures, and quarries.

There are parcels of Inuit Owned Land (surface and subsurface) within the areas and overlapping mineral rights. Note that the proposed Kiv-Manitoba Road passes through an extensive portion of this area.

- a. Are the Caribou Post-Calving areas mapped correctly? If No ... then ... describe what changes should be made.

➤ ***Arviat community participants agreed with the caribou post-calving areas identified in the 2016 DNLUP.***

- Group 1– Participants agreed that the areas are mapped correctly. No comments on changing the areas
- Group 2 – Participants agreed that the areas are mapped correctly. No comments on changing the areas

- b. Do you agree it is necessary to restrict certain uses and activities like mining, oil & gas, roads, hydro-electric infrastructure, and quarries in Caribou Post-Calving areas?

➤ ***Arviat community participants agreed that activities like mining, oil & gas, all-weather roads, hydro-electric infrastructure, and quarries should be prohibited in caribou post-calving grounds. Some participants noted that caribou could adapt to the Kivalliq-Manitoba road.***

- Group 1– HTO supports year-round protections on all development, in part because there are special plants there that are needed to produce enough milk for calves. Some are concerned about the Kivalliq-Manitoba road eventually acting as a block to caribou. Others say the caribou could learn to cross the road, as they have seen on the Meadowbank Road.
- Group 2 – NPC could create guidelines on how the road could be built and used to minimize negative impacts on caribou

- c. Are there other uses or activities that should be restricted?

- Group 1 – Participants noted support for development outside of the calving/post-calving areas.
- Group 2 – no comment

- d. If restrictions on uses or activities occur, should they be year-round or seasonal? If seasonal, what time frame would you recommend?

➤ ***Arviat community participants agreed that restrictions on caribou post-calving areas should be year-round, rather than seasonal.***

- Group 1–Participants recommended that restrictions be year-round. They have not moved for a long time.
- Group 2 – Participants recommended that restrictions be year-round.

6. Caribou Fresh Water Crossing

There are Caribou Fresh Water Crossings near your community (see map). The 2016 DNLUP recommends that the fresh water crossings be zoned Protected Areas with year-round restrictions on mining, oil & gas exploration, roads, hydro-electrical infrastructures, and quarries. *Note: There are parcels of Inuit Owned Land (surface and subsurface) within the areas and overlapping mineral rights.*

- a) Are the Caribou Fresh Water Crossing areas mapped correctly? Is the 10km buffer zone appropriate? If No ... then ... describe what changes should be made.

➤ ***Arviat community participants agreed with the identified caribou freshwater crossing locations and identified additional areas.***

- Group 1– Participants agreed with the identified areas but there are other crossings not marked. Mapped one additional crossing that should be treated the same way, but suggested NPC should approach Arviat HTO and get more water crossings to the south. Participants agreed with applying a 10 km buffer to water crossings.
- Group 2 – Participants agreed with the identified areas but there are other crossings not marked. Mapped one additional crossing in northern Magueese Lake that should be treated the same way

- b) Do you agree it is necessary to restrict certain uses and activities like mining, oil & gas, roads, hydro-electric infrastructure, and quarries in Caribou Fresh Water Crossing areas?

➤ ***Arviat community participants agreed that activities like mining, oil & gas, all-weather roads, hydro-electric infrastructure, and quarries should be prohibited in caribou fresh water crossing areas.***

- Group 1– Participants support year-round protections on all development.
- Group 2 – Participants support year-round protections on all development.

- c) Are there other uses or activities that should be restricted?

- Group 1– no comments
- Group 2 – no comments

- d) If restrictions on uses or activities occur, should they be year-round or seasonal? If seasonal, what time frame would you recommend?

➤ ***Arviat community participants recommended year round prohibitions for caribou freshwater crossings.***

- Group 1– Participants support year-round protections on all development.
- Group 2 – Participants support year-round protections on all development.

7. Final wrap up Question

Are there other areas important to your community that the Nunavut land use plan should identify and designate for use? Identify the area, the values and sensitivity? Importance of area, and what types of activities should be restricted and when the restrictions should be in place.

- Group 1– Some participants noted concerns about caribou in other areas moving away from traditional habitat including near Black Lake in Manitoba, and Baker Lake due to mining in those areas. Other participants noted that the environment is changing and that is causing caribou to move to new areas as well.
- Group 2 – No Comments

Appendix A: Breakout Group Reference Maps

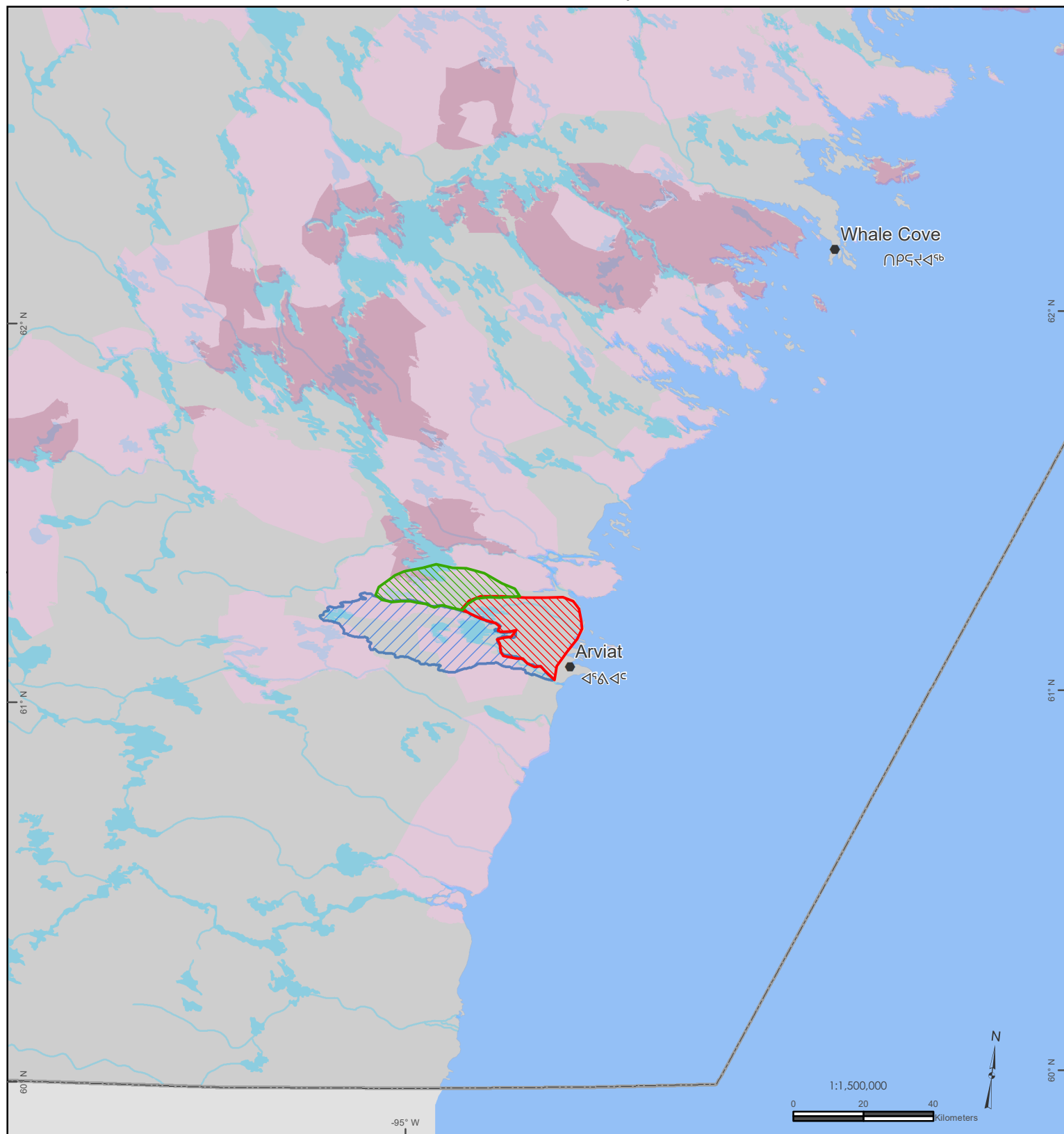
Appendix B: Breakout Group Map Revisions






Map 1: Additional Community Watershed Area

Map 2: Additional Polar Bear Denning Areas

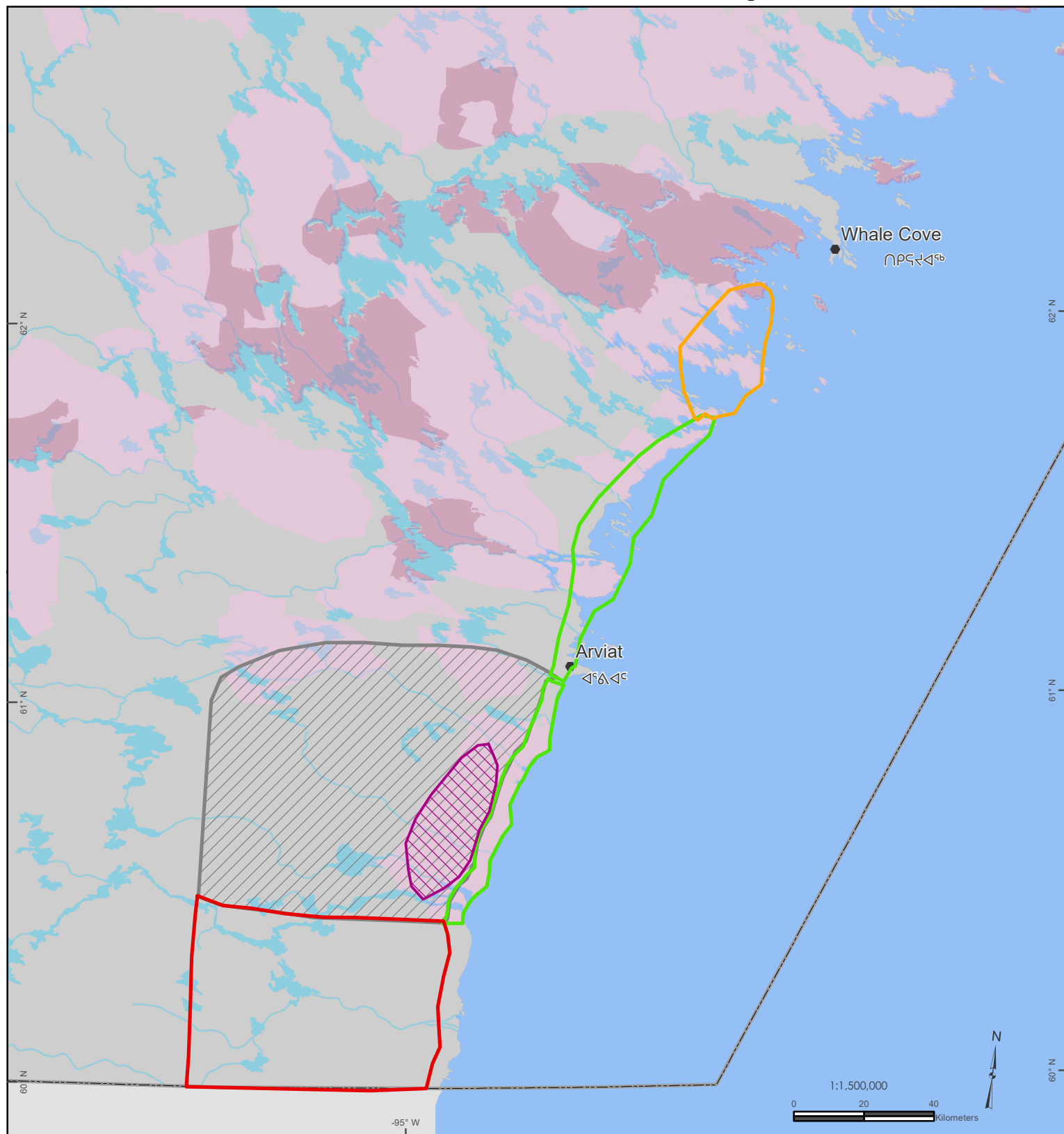
Map 3: Additional Caribou Fresh Water Crossing Areas

Δርብሳጋር ወርብላጋር ልዩክፍልፋር
 Additional Community Watershed Area



-  Community Watershed DNLUP 2016 ወደፊት ልማታዊ ልማት
-  IOL Surface Rights ልዩነት ወደፊት ንድፍ ላይ ያለውን ይህንኑ
-  Group 1 - A ከበረሃው 1 - A
-  IOL Subsurface Rights ልዩነት ወደፊት ንድፍ ላይ ያለውን ለጥያቄው
-  Group 1 - B ከበረሃው 1 - B

Additional Polar Bear Denning Areas



Group 2

 Possible Denning Area ΔL^b $\alpha \Delta^c$ $\rho^c \rho^c$ $\Delta \sigma^c$

☐ Polar Bear Denning ᐅᐅᐃᑦ ᐱᑦᐅᑦᐅᑦ

Remove Not Denning Area ᐱᕈᑦᑐᓂ ᐃᓄᐅᑦ ᕈᑦᑎᕐᑦᑦ ᐃᓂᕐᓴ

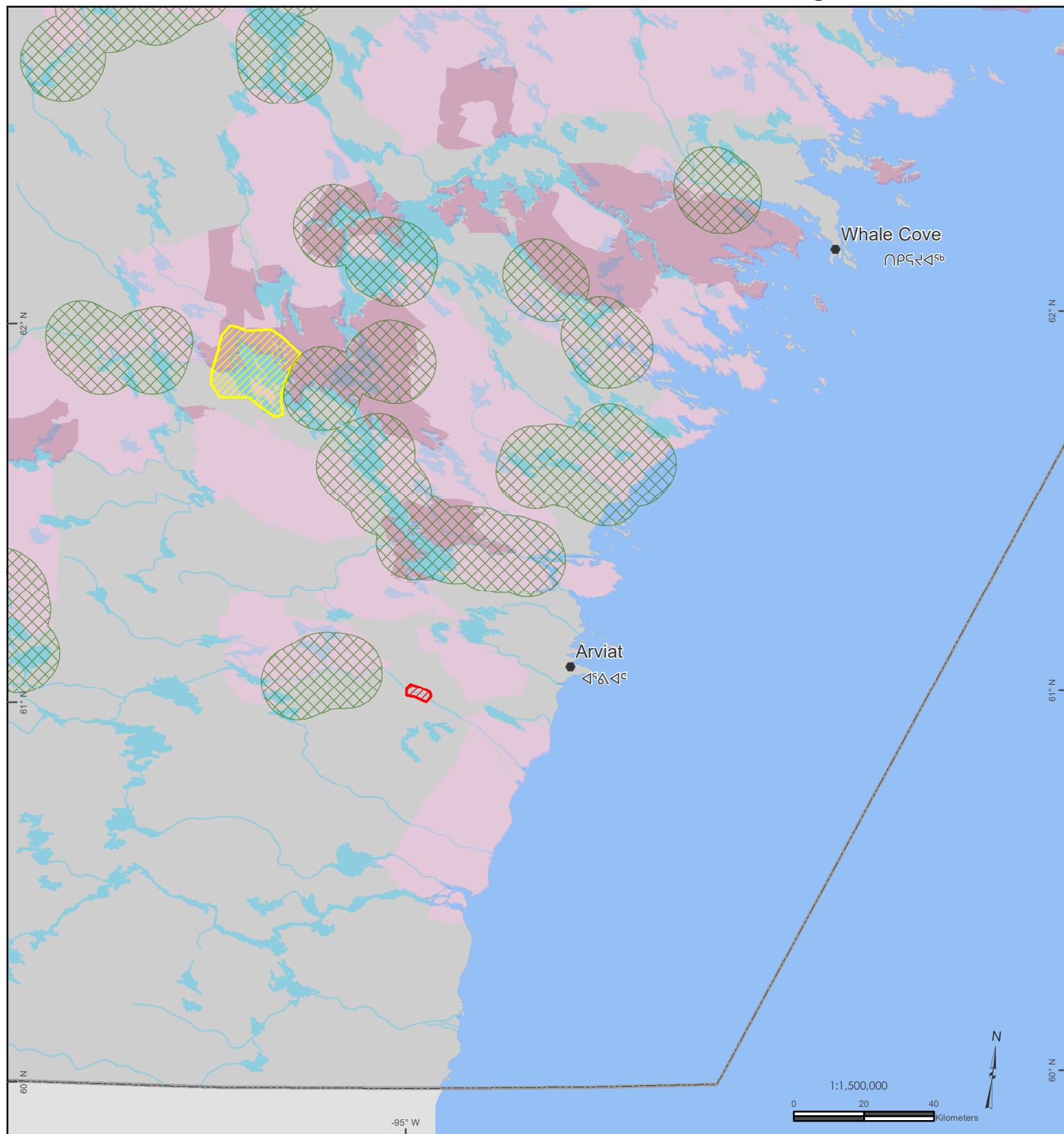
 Polar Bear Denning (DNLUP 2016) ᐃᐅᐃᑦ ᐱᑦᐅᐱᑦ

☐ Polar Bear Denning Group 1 $\alpha\beta\Delta^c$ $\rho^c\theta^c\rho^c$ $b\theta\Delta\sigma^c\rho^c$ 1

IOL Surface Rights $\Delta\phi\Delta^c$ $\mu\phi^c\Delta^c$ $\phi\Delta^c\sigma$ $\Delta^c\sigma$ $\mu\phi^c$

[illegible]

ΔΔΔΔΔΔ ΔΔΔΔ ΔΔΔΔ ΔΔΔΔ
 Additional Caribou Fresh Water Crossing Areas



- Water Crossing DNLUP 2016 ንጋልሮ ልጅ
- Group 1 ከባለማኅበር 1
- Group 2 ከባለማኅበር 2
- IOL Surface Rights ልዩነት ምድርና ምድርና ልዩነት ምድርና
- IOL Subsurface Rights ልዩነት ምድርና ምድርና ልዩነት ምድርና ልዩነት ምድርና