

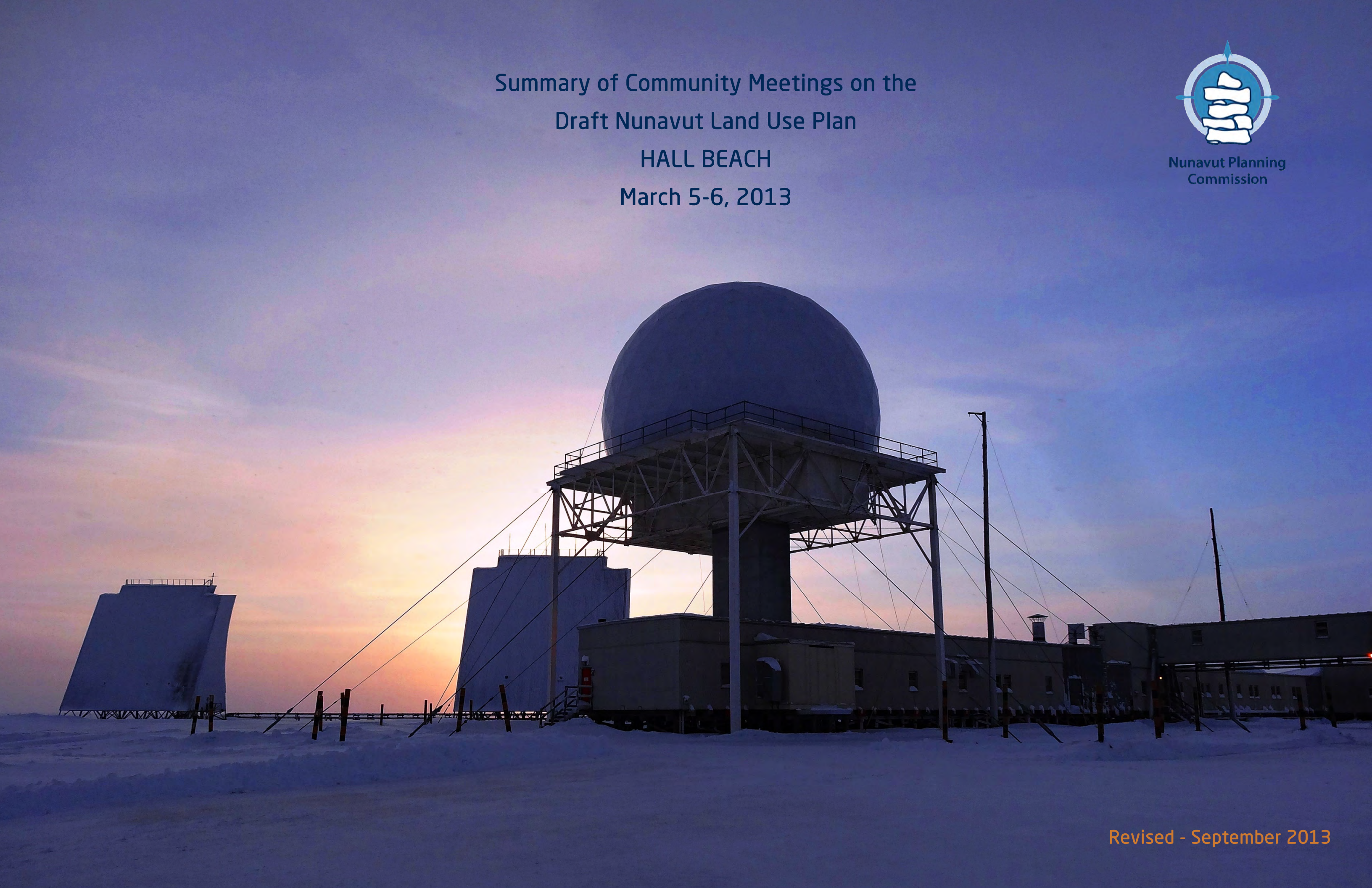
Summary of Community Meetings on the
Draft Nunavut Land Use Plan

HALL BEACH

March 5-6, 2013



Nunavut Planning
Commission



Revised - September 2013

Contents

Introduction.....	3	Appendix 1: Open House	17
1.1 Context	3	Appendix 2: Elected Officials Meeting	18
1.2 Purpose.....	3	Appendix 3: Questions and Answers	19
1.3 Methodology.....	3	Appendix 4: Community Workshop Scanned Maps	20
1.4 Public Awareness	3	Appendix 5: Wrap Up Session	30
1.5 Community Population and Participation.....	3	Appendix 6: Follow-up Meeting	33
 Protecting and Sustaining the Environment	4		
2.1 Areas presented to participants.....	4		
2.2 Areas identified by participants	4		
2.3 Areas of importance to Protecting and Sustaining the Environment..	4		
 Encouraging Conservation Planning.....	6		
3.1 Areas presented to participants	6		
3.2 Areas identified by participants	6		
3.3 Areas of importance to Encouraging Conservation Planning	6		
 Building Healthier Communities	8		
4.1 Areas presented to participants.....	8		
4.2 Areas identified by participants	8		
4.3 Areas of importance to Building Healthier Communities	8		
 Encouraging Sustainable Economic Development.....	10		
5.1 Areas presented to participants.....	10		
5.2 Areas identified by participants	10		
5.3 Areas of importance to Encouraging Sustainable Economic Development	10		
 Mixed Use	12		
6.1 Areas identified in the Draft Plan	12		
6.2 Areas identified by participants	12		
 Overlapping Goals	15		
7.1 Areas identified for multiple goals	15		

Chapter 1: Introduction

1.1 Context

The Nunavut Planning Commission (NPC) is preparing a land use plan to guide and direct resource use and development in the Nunavut Settlement Area (NSA). As part of its efforts, the NPC is facilitating discussions in each Nunavut community on land use and resource management issues. Information that is obtained from these discussions will be used to inform decisions regarding the further development of the Nunavut Land Use Plan (NLUP).

1.2 Purpose

This report presents information obtained during the NPC's visit to the community of Hall Beach. The purpose of the report is to inform decisions regarding the further development of the NLUP, ensuring that the plan reflects the priorities and values of residents.

It is important to note that the information contained in the Community Report will be considered in conjunction with all other feedback when revising the DNLUP.

1.3 Methodology

Information was presented to and received from participants in Hall Beach in accordance with the Nunavut Planning Commission's Community Engagement Strategy (Engagement Strategy). The Engagement Strategy provides for the following methods for presenting and receiving information;

- **Open house;** information contained in the Draft Nunavut Land Use Plan (DNLUP) was presented on 7 multi lingual large format poster boards. Participants were encouraged to review the posters, ask questions and provide feedback. Comments and questions were recorded by NPC staff and are contained in Appendix 1.
- **Elected Officials Meeting;** The NPC Chairperson and NPC staff met with senior and elected officials in the community. The development process for the DNLUP, its content and next steps were presented.

Comments and questions were recorded during the session and are contained in Appendix 2.

- **Public Workshop;** A formal presentation of the Draft Plan content was provided to participants, including a slide overview of its content. Following the presentation, questions and comments were received from participants. The questions, comments and responses are contained in Appendix 3.

A mapping session followed the presentation of the Draft Plan. The mapping session involved discussions regarding the topics presented in the DNLUP and encouraged participants to identify additional areas and issues important for inclusion in a NLUP. Information received during this session was recorded by NPC staff and is included in Appendix 4.

- **Wrap Up Session;** Staff was available to discuss the areas identified during the mapping and identify any additional issues or areas of interest. Information received during this session was recorded by NPC staff and is included in Appendix 5.

Areas that participants identified during mapping sessions as important to a particular goal have, in the majority of cases, been included in this report as they were recorded. In instances where participants identified an area that was better suited to another goal, the area has been reclassified to the more suitable goal and has been verified as appropriate to do so by the Community.

A follow-up meeting was held on May 16, 2013 to review a draft version of this report with the Hamlet Council, Hunters and Trappers Organization, and Community Lands and Resource Committee. A summary of this meeting is included in Appendix 6.

1.4 Public Awareness

The NPC raised public awareness regarding its visit to Hall Beach in accordance with the Engagement Strategy.

The DNLUP and supporting materials were mailed to the Mayor and Council of Hall Beach, the Hunters and Trappers

Organizations (HTO) in September 2012. In addition, letters of invitation were sent to the Hall Beach Mayor and Council and HTO in advance of the NPC's visit to advise of the meetings and to encourage participation. Follow up phone calls were also made.

Public notice of the various events was provided in the following ways:

- **Nunatsiaq News and Nunavut News/North;** notice of community meetings were posted in both newspapers a minimum of 45 days in advance.
- **Co-op cable TV;** notice of community meetings was run a minimum of 45 days in advance for one week and run again for no less than 14 days before the meetings.
- **Community radio;** notices were read by the hosts and a live interview with the Commission Chairperson was conducted.
- **Community bulletin boards;** notices were posted on bulletin boards around the community 45 days and again 14 days in advance of the meetings.
- **Community mail drop;** one page flyers that announced the meetings and their purpose were delivered to the post office in each community for all mail boxes that accept unaddressed ad-mail.
- **nunavut.ca;** the schedule of community visits, the Draft Plan, and all supporting information was available on the Commission's website.

1.5 Community Population and Participation

Hall Beach is a community of approximately 550 people (Statistics Canada. 2011 Census). It is located on the shore of northern Foxe Basin (see Figure 1).

The Commission visited the community on March 5-6, 2013. All events occurred as scheduled. The sessions were attended as follows;

- **Elected Officials Meeting;** the Mayor and members of the Hamlet Council and HTO attended the elected officials meeting.
- **Open house;** approximately 20 people attended the open house to review the Draft Plan.
- **Public Workshop;** approximately 40 people attended the presentation of the DNLUP and facilitated mapping sessions. Information was recorded in 2 separate mapping groups.
- **Wrap Up Session;** approximately 10 people attended the wrap up session.

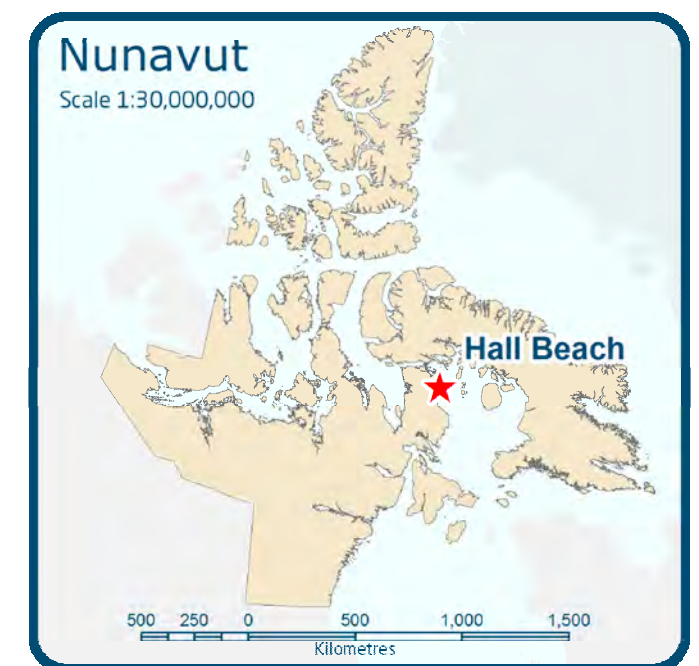


Figure 1. Location of Hall Beach

Chapter 2: Protecting and Sustaining the Environment

Protecting and Sustaining the Environment was one of five topics presented to and discussed by participants during the Open House, Elected Officials Meeting, Public Workshop and Wrap up Session, collectively referred to in this document as information sharing and gathering sessions.

2.1 Areas presented to participants

During the information sharing and gathering sessions, participants were presented the following areas and issues as important to Protecting and Sustaining the Environment.

- Key bird habitat sites
- Caribou Habitat sites
- Atlantic Cod Lakes
- Cumulative Impacts
- Transboundary considerations
- Climate change

The importance of these issues and areas to Protecting and Sustaining the Environment was not disputed by participants during the information sharing and gathering sessions.

2.2 Areas identified by participants

Additional areas and issues were identified by participants as important to Protecting and Sustaining the Environment during the information sharing and gathering sessions. These additional areas are;

- Caribou
- Bird habitat
- Hunting areas
- Fishing areas
- Polar bear habitat

- Walrus habitat
- Narwhal habitat
- Seals

2.3 Areas of importance to Protecting and Sustaining the Environment

Areas and issues discussed during the information sharing and gathering sessions as important to Protecting and Sustaining the Environment are illustrated on Map 1, including areas identified in the DNLUP and areas identified by the community. Scanned images of the maps on which community feedback was recorded can be found in Appendix 4 and Appendix 5.

Based on discussions with participants, the NPC understands that:

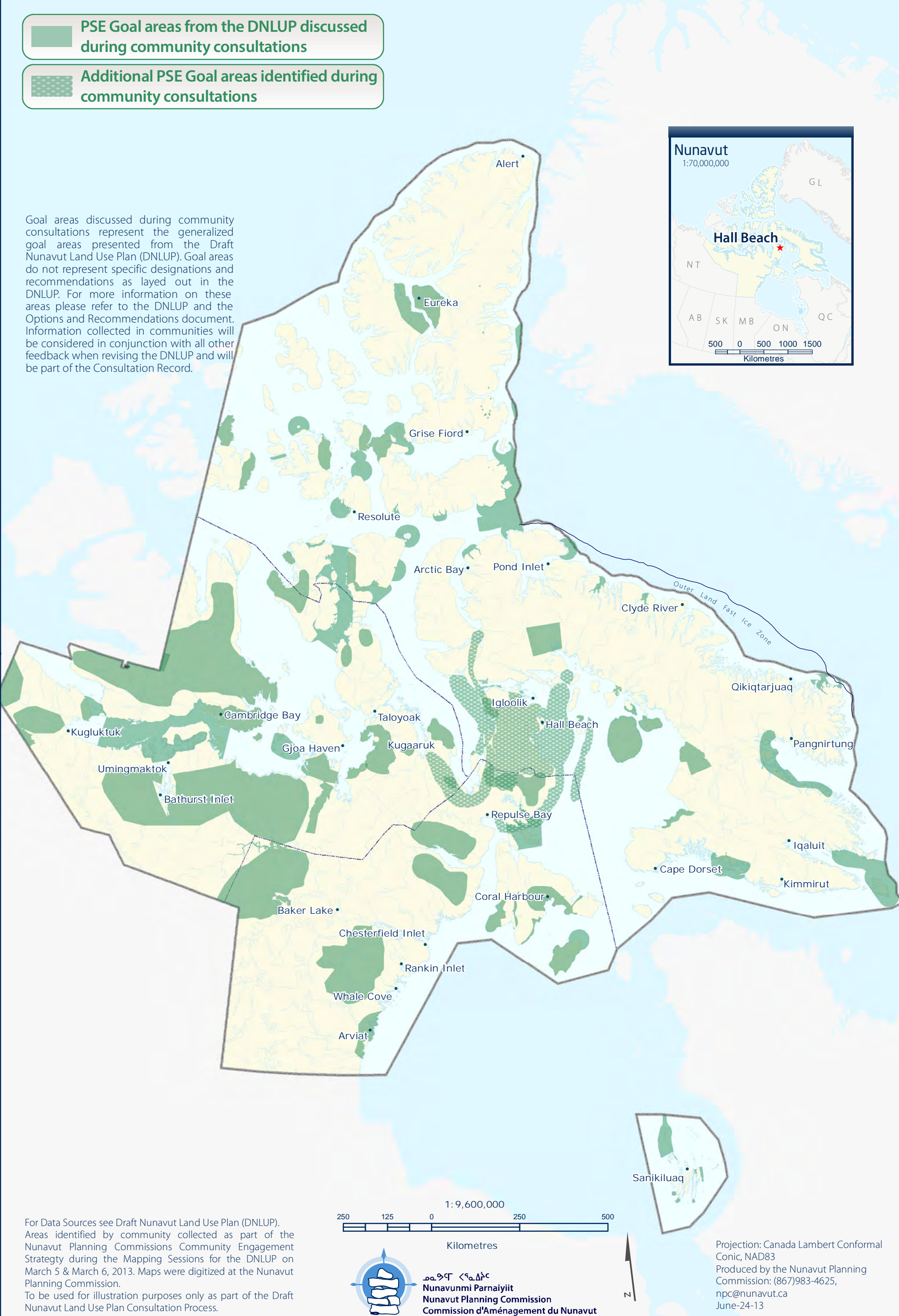
- The areas identified on Map 1 are considered by the Community to be important to Protecting and Sustaining the Environment.
- In these areas, the community would like the NLUP to encourage activities that support environmental protection and management needs, including wildlife conservation, protection and management.

This feedback will be considered in conjunction with all other feedback when revising the DNLUP.



-  PSE Goal areas from the DNLUP discussed during community consultations
-  Additional PSE Goal areas identified during community consultations

Goal areas discussed during community consultations represent the generalized goal areas presented from the Draft Nunavut Land Use Plan (DNLUP). Goal areas do not represent specific designations and recommendations as layed out in the DNLUP. For more information on these areas please refer to the DNLUP and the Options and Recommendations document. Information collected in communities will be considered in conjunction with all other feedback when revising the DNLUP and will be part of the Consultation Record.



Chapter 3: Encouraging Conservation Planning

Encouraging Conservation Planning was one of five topics presented to and discussed by the participants during the information sharing and gathering sessions.

3.1 Areas presented to participants

During the information sharing and gathering sessions, participants were presented the following areas and issues as important to Encouraging Conservation Planning;

- National Parks Awaiting Full Establishment
- Proposed National Parks
- National Marine Conservation Areas
- Thelon Wildlife Sanctuary
- Migratory Bird Sanctuaries
- National Wildlife Areas
- National Historic Sites
- Territorial Historic Sites
- Heritage Rivers

The importance of these issues and areas to Encouraging Conservation Planning was not disputed by participants during the information sharing and gathering sessions.

3.2 Areas identified by participants

Additional areas and issues were identified by participants as important to Encouraging Conservation Planning during the information sharing and gathering sessions. These additional areas are.

- Bird habitat
- Caribou
- Historic sites

3.3 Areas of importance to Encouraging Conservation Planning

Areas and issues discussed during the information sharing and gathering sessions as important to Encouraging Conservation Planning are illustrated on Map 2, including areas identified in the DNLUP and areas identified by the community. Scanned images of the maps on which community feedback was recorded can be found in Appendix 4 and Appendix 5.

Based on discussions with participants, the NPC understands that:

- The areas identified on Map 2 are considered by the Community to be important to Encouraging Conservation Planning.
- In these areas, the community would like the NLUP to encourage activities that support environmental protection and management needs, including wildlife conservation, protection and management.

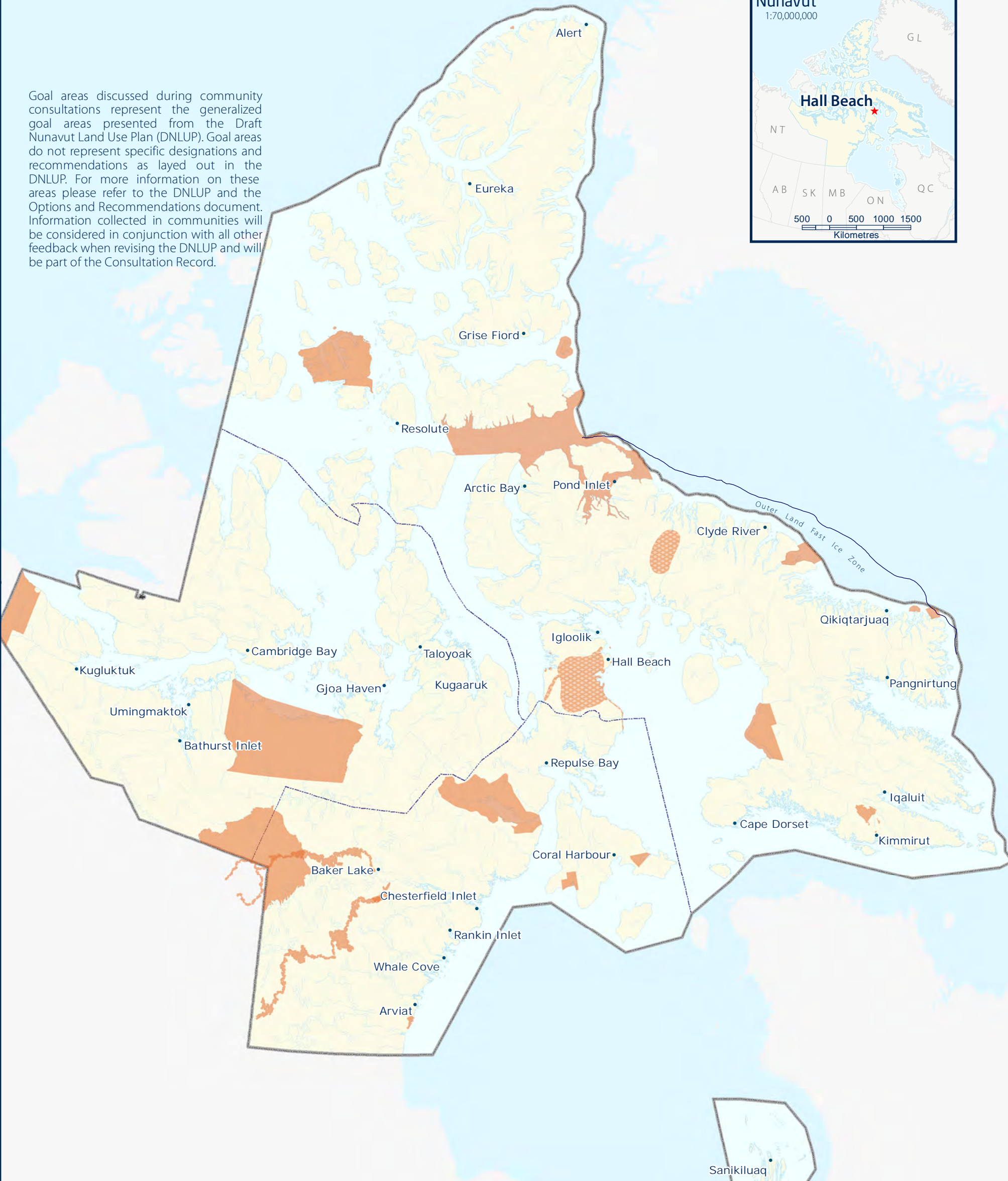
This feedback will be considered in conjunction with all other feedback when revising the DNLUP.



 ECP Goal areas from the DNLUP discussed during community consultations

 Additional ECP Goal areas identified during community consultations

Goal areas discussed during community consultations represent the generalized goal areas presented from the Draft Nunavut Land Use Plan (DNLUP). Goal areas do not represent specific designations and recommendations as layed out in the DNLUP. For more information on these areas please refer to the DNLUP and the Options and Recommendations document. Information collected in communities will be considered in conjunction with all other feedback when revising the DNLUP and will be part of the Consultation Record.



For Data Sources see Draft Nunavut Land Use Plan (DNLUP). Areas identified by community collected as part of the Nunavut Planning Commissions Community Engagement Strategy during the Mapping Sessions for the DNLUP on March 5 & March 6, 2013. Maps were digitized at the Nunavut Planning Commission. To be used for illustration purposes only as part of the Draft Nunavut Land Use Plan Consultation Process.



ᓄᓇᓂᓄᓐ ᐸᓐᓇᓂᓄᓐ
Nunavunmi Parnaiyiit
Nunavut Planning Commission
Commission d'Aménagement du Nunavut



Projection: Canada Lambert Conformal Conic, NAD83
Produced by the Nunavut Planning Commission: (867)983-4625, npc@nunavut.ca
June-24-13

Chapter 4: Building Healthier Communities

Building Healthier Communities was one of five topics presented to and discussed by the participants during the information sharing and gathering sessions.

4.1 Areas presented to participants

During the information sharing and gathering sessions, participants were presented the following areas and issues as important to Building Healthier Communities;

- Areas of Community Interest
- Community Land Use
- Transportation Infrastructure
- Unincorporated Communities
- Alternative Energy Sources
- Community drinking water supplies
- Land remediation
- Northern Contaminated Sites Program
- Aerodromes
- Canadian Forces Station
- Northern Warning System sites

The importance of these issues and areas to Building Healthier Communities was not disputed by participants.

4.2 Areas identified by participants

Additional areas and issues were identified by participants as important to contributing to the goal of Building Healthier Communities during the information sharing and gathering sessions. These additional areas are;

- Cabin areas

- Contaminated sites
- Drinking water

4.3 Areas of importance to Building Healthier Communities

Areas and issues discussed during the information sharing and gathering sessions as important to Building Healthier Communities are illustrated on Map 3, including areas identified in the DNLUP and areas identified by the community. Scanned images of the maps on which community feedback was recorded can be found in Appendix 4 and Appendix 5.

Based on discussions with participants, the NPC understands that:

- The areas identified on Map 3 are considered by the Community to be important to Building Healthier Communities.
- In these areas, the community would like the NLUP to encourage activities that support community needs and cultural priorities.

This feedback will be considered in conjunction with all other feedback when revising the DNLUP.



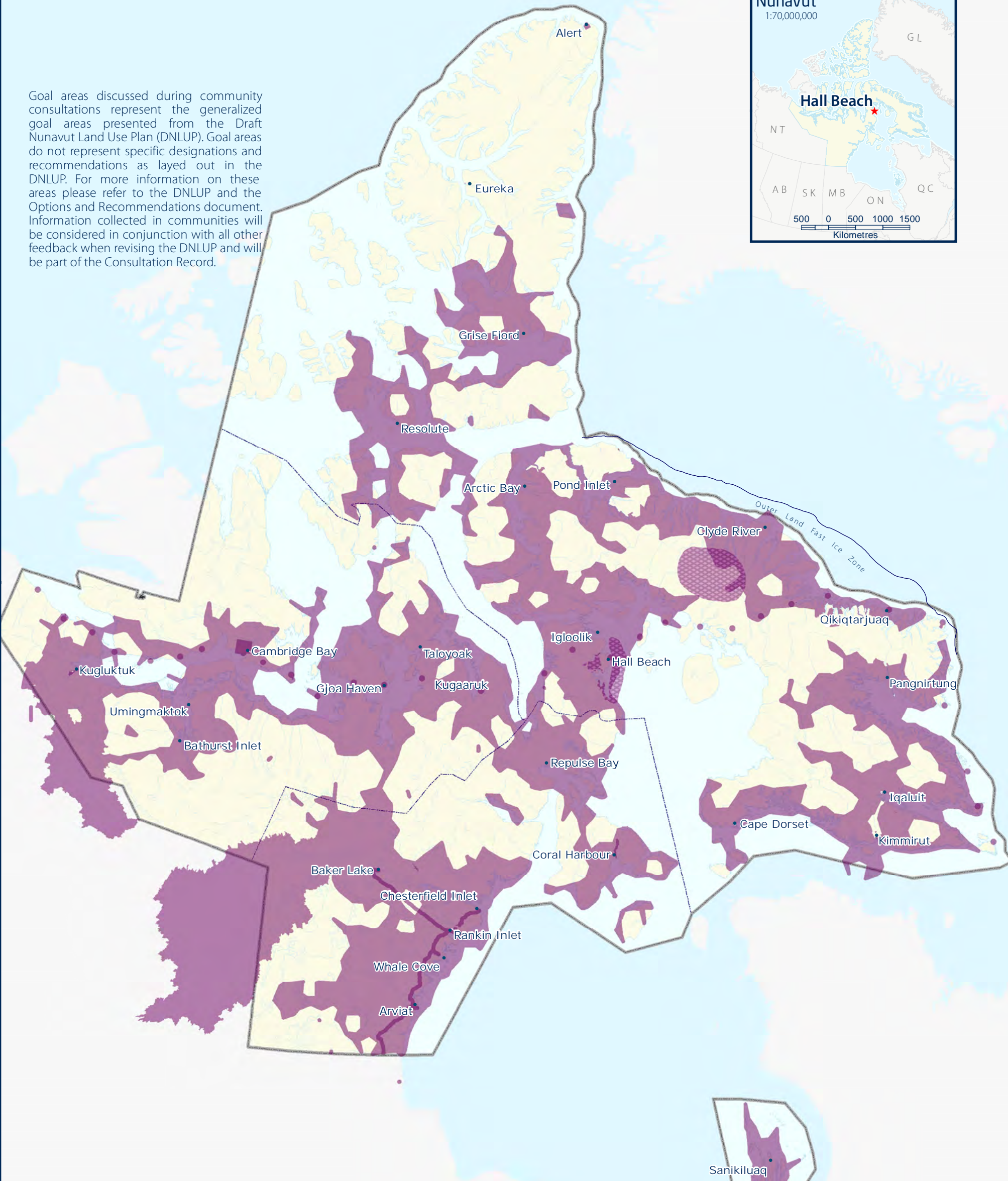


BHC Goal areas from the DNLUP discussed during community consultations



Additional BHC Goal areas identified during community consultations

Goal areas discussed during community consultations represent the generalized goal areas presented from the Draft Nunavut Land Use Plan (DNLUP). Goal areas do not represent specific designations and recommendations as layed out in the DNLUP. For more information on these areas please refer to the DNLUP and the Options and Recommendations document. Information collected in communities will be considered in conjunction with all other feedback when revising the DNLUP and will be part of the Consultation Record.



For Data Sources see Draft Nunavut Land Use Plan (DNLUP). Areas identified by community collected as part of the Nunavut Planning Commissions Community Engagement Strategy during the Mapping Sessions for the DNLUP on March 5 & March 6, 2013. Maps were digitized at the Nunavut Planning Commission.
To be used for illustration purposes only as part of the Draft Nunavut Land Use Plan Consultation Process.



Nunavunmi Parnaiyiit
Nunavut Planning Commission
Commission d'Aménagement du Nunavut



Projection: Canada Lambert Conformal Conic, NAD83
Produced by the Nunavut Planning Commission: (867)983-4625, npc@nunavut.ca
June-24-13

Chapter 5: Encouraging Sustainable Economic Development

Encouraging Sustainable Economic Development was one of five topics presented to and discussed by the participants during the information sharing and gathering sessions.

5.1 Areas presented to participants

During the information sharing and gathering sessions, participants were presented with the following areas important to Encouraging Sustainable Economic Development;

- Mineral Exploration and Production
- Oil and Gas Exploration
- Commercial Fisheries

The importance of these issues and areas to Encouraging Sustainable Economic Development was not disputed by participants during the information sharing and gathering sessions.

5.2 Areas identified by participants

Additional areas and issues were identified by participants as important to Encouraging Sustainable Economic Development during the information sharing and gathering sessions. The additional areas identified are;

- Soapstone
- Commercial caribou harvest

5.3 Areas of importance to Encouraging Sustainable Economic Development

Areas and issues discussed during the information sharing and gathering sessions as important to Encouraging Sustainable Economic Development are illustrated on Map 4, including areas identified in the DNLUP and areas identified by the community. Scanned images of the maps on which

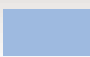

community feedback was recorded can be found in Appendix 4 and Appendix 5.

Based on discussions with participants, the NPC understands that:

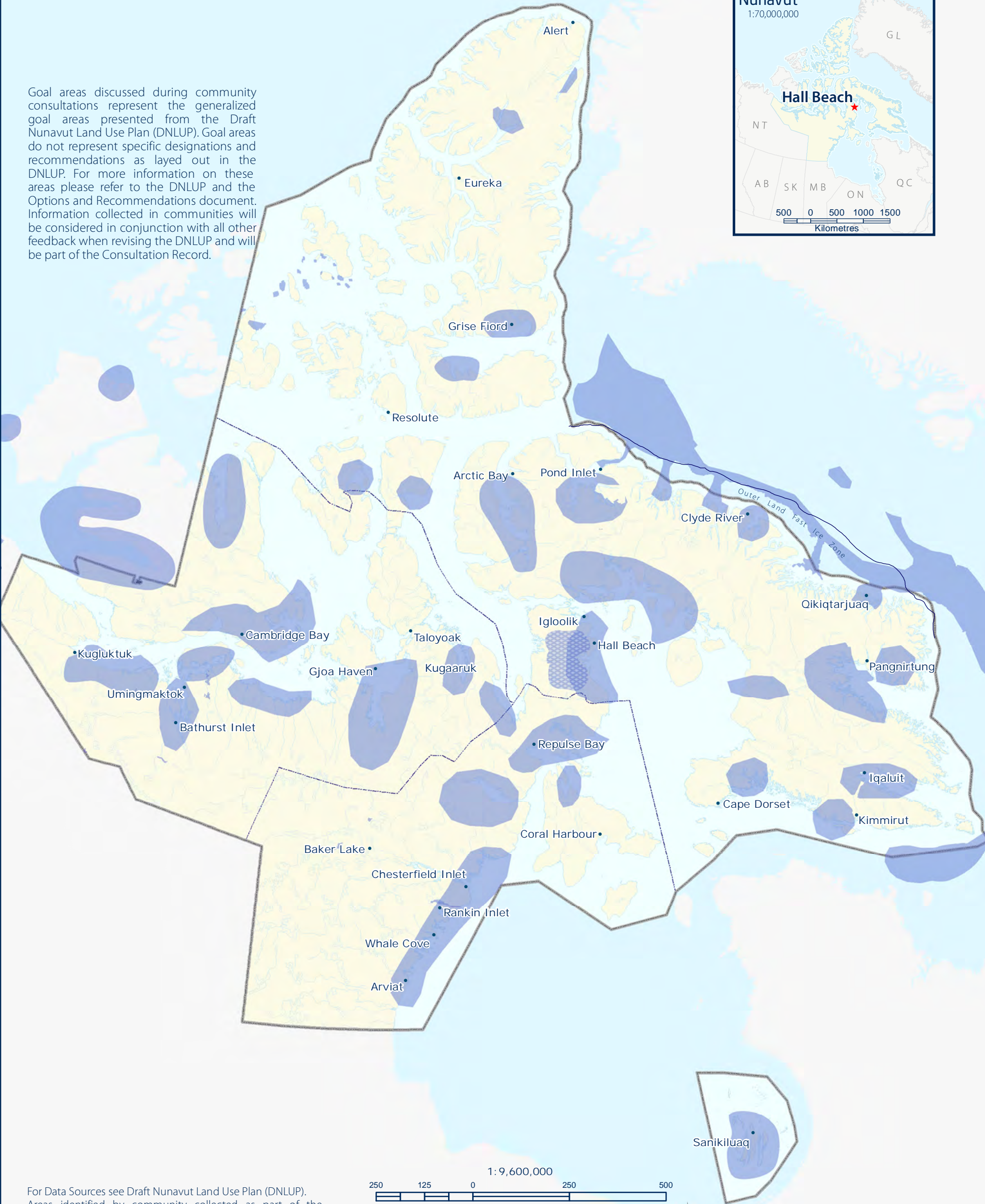
- The areas identified on Map 4 are considered by the Community to be important to Encouraging Sustainable Economic Development.
- In these areas, the community would like the NLUP to encourage activities that support economic opportunities and needs.

This feedback will be considered in conjunction with all other feedback when revising the DNLUP.



-  ESED Goal areas from the DNLUP discussed during community consultations
-  Additional ESED Goal areas identified during community consultations

Goal areas discussed during community consultations represent the generalized goal areas presented from the Draft Nunavut Land Use Plan (DNLUP). Goal areas do not represent specific designations and recommendations as layed out in the DNLUP. For more information on these areas please refer to the DNLUP and the Options and Recommendations document. Information collected in communities will be considered in conjunction with all other feedback when revising the DNLUP and will be part of the Consultation Record.



For Data Sources see Draft Nunavut Land Use Plan (DNLUP). Areas identified by community collected as part of the Nunavut Planning Commissions Community Engagement Strategy during the Mapping Sessions for the DNLUP on March 5 & March 6, 2013. Maps were digitized at the Nunavut Planning Commission.
To be used for illustration purposes only as part of the Draft Nunavut Land Use Plan Consultation Process.



ᑎᓄᓐᓂᓐ ᑕᓄᓐᓂᓐ
Nunavunmi Parnaiyiit
Nunavut Planning Commission
Commission d'Aménagement du Nunavut



Projection: Canada Lambert Conformal Conic, NAD83
Produced by the Nunavut Planning Commission: (867)983-4625, npc@nunavut.ca
June-24-13

6.1 Areas identified in the Draft Plan

The DNLUP identifies areas important for a variety of uses. These areas were presented to participants during the workshop as Mixed Use Areas. These areas, as they occur around the community, are illustrated on Map 5.

6.2 Areas identified by participants

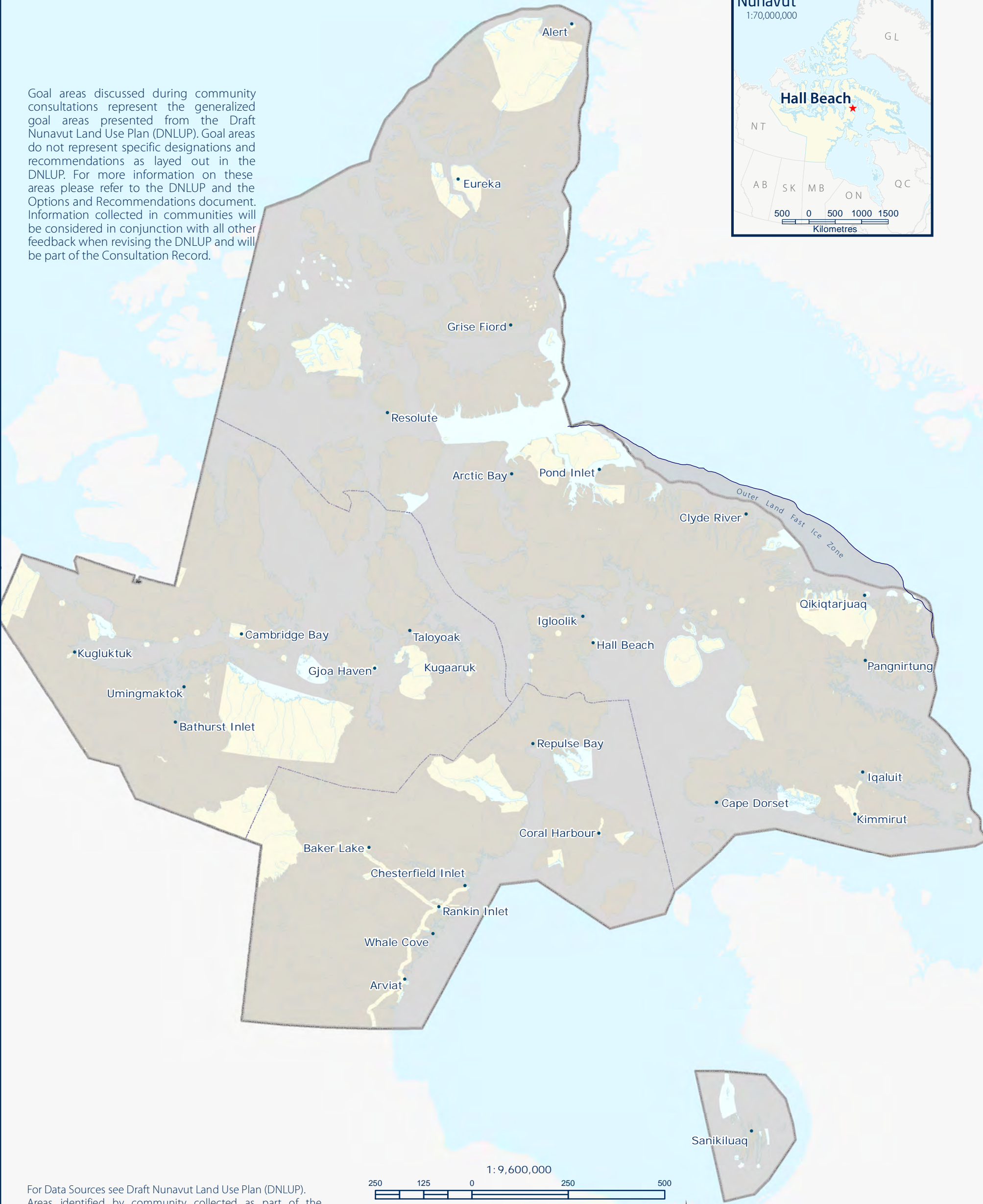
No additional areas were identified as Mixed Use by participants. However, some areas identified as Mixed Use in the DNLUP were considered by participants to require additional protection because of their particular qualities. These areas and the goals they are important for are identified on Map 6.





MU Goal areas from DNLUP discussed during community consultations

Goal areas discussed during community consultations represent the generalized goal areas presented from the Draft Nunavut Land Use Plan (DNLUP). Goal areas do not represent specific designations and recommendations as layed out in the DNLUP. For more information on these areas please refer to the DNLUP and the Options and Recommendations document. Information collected in communities will be considered in conjunction with all other feedback when revising the DNLUP and will be part of the Consultation Record.



For Data Sources see Draft Nunavut Land Use Plan (DNLUP). Areas identified by community collected as part of the Nunavut Planning Commissions Community Engagement Strategy during the Mapping Sessions for the DNLUP on March 5 & March 6, 2013. Maps were digitized at the Nunavut Planning Commission. To be used for illustration purposes only as part of the Draft Nunavut Land Use Plan Consultation Process.



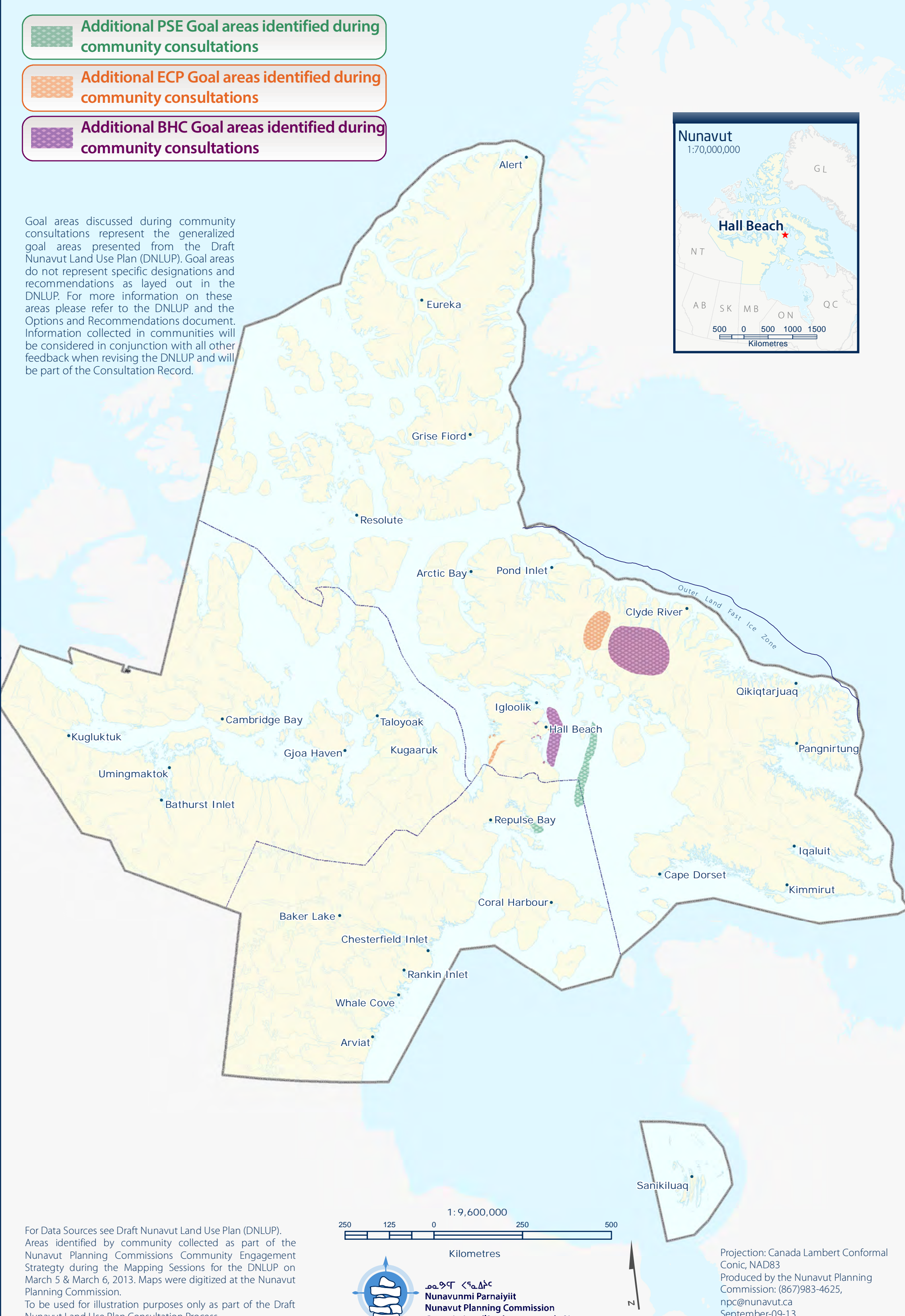
ᓄᓇᓂᓄᓐ ᐸᓐᓇᓂᓄᓐ
Nunavunmi Parnaiyiit
Nunavut Planning Commission
Commission d'Aménagement du Nunavut



Projection: Canada Lambert Conformal Conic, NAD83
Produced by the Nunavut Planning Commission: (867)983-4625, npc@nunavut.ca
June-24-13

-  Additional PSE Goal areas identified during community consultations
-  Additional ECP Goal areas identified during community consultations
-  Additional BHC Goal areas identified during community consultations

Goal areas discussed during community consultations represent the generalized goal areas presented from the Draft Nunavut Land Use Plan (DNLUP). Goal areas do not represent specific designations and recommendations as layed out in the DNLUP. For more information on these areas please refer to the DNLUP and the Options and Recommendations document. Information collected in communities will be considered in conjunction with all other feedback when revising the DNLUP and will be part of the Consultation Record.



7.1 Areas identified for multiple goals

All areas discussed with the community as important for a particular goal are shown on Map 7. In some instances, areas have been identified as important for multiple goals. These areas, and the specific goals they are important to, are also shown on Map 7. In these areas, the NPC will take all of the identified goals and all other feedback into consideration when revising the DNLUP.



Hall Beach • Map 7
Overlapping Goal Areas



Label	Goals in Area
A	PSE
B	ECP
C	BHC
D	ESED
E	PSE, ECP
F	BHC, ECP
G	BHC, PSE
H	ESED, ECP
I	ESED, PSE
K	BHC, ESED
L	BHC, PSE, ECP
M	BHC, ESED, ECP
N	BHC, ESED, PSE
O	ESED, PSE, ECP
P	All Goals (BHC, ESED, PSE, ECP)

1 Goal Identified in area

2 Goals Identified in area

3 Goals Identified in area

4 Goals Identified in area

Established Parks
(Land Use Plan does not apply)

Administrative Boundary

1:3,000,000

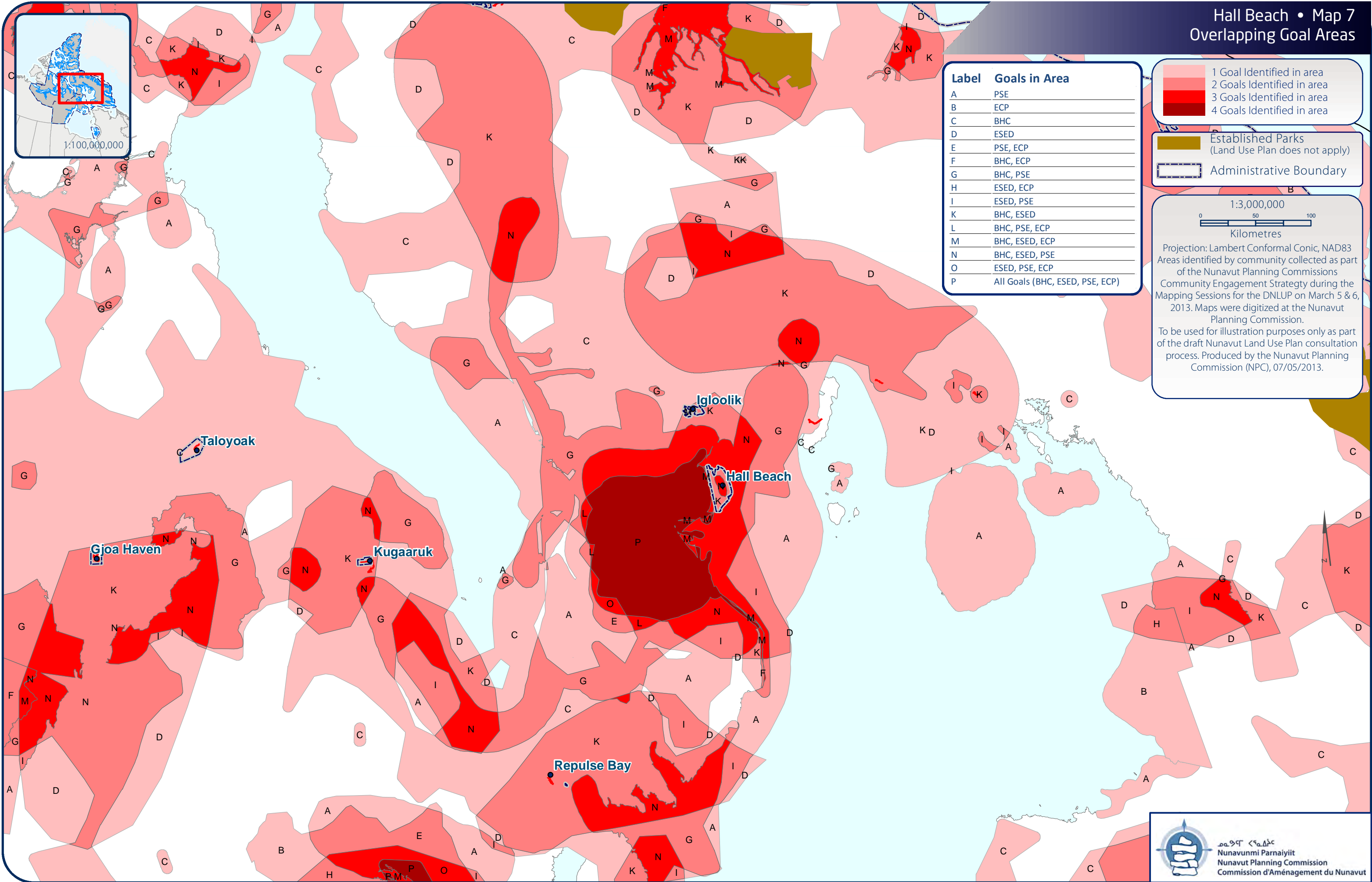
050100

Kilometres

Projection: Lambert Conformal Conic, NAD83

Areas identified by community collected as part of the Nunavut Planning Commissions Community Engagement Strategy during the Mapping Sessions for the DNLUP on March 5 & 6, 2013. Maps were digitized at the Nunavut Planning Commission.

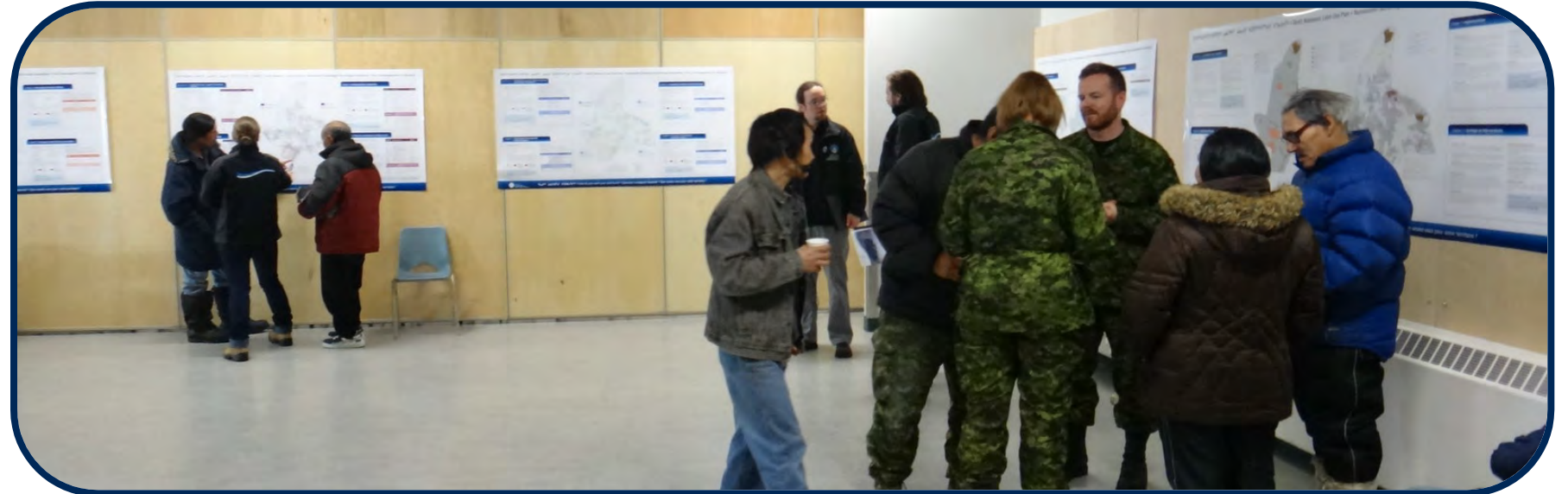
To be used for illustration purposes only as part of the draft Nunavut Land Use Plan consultation process. Produced by the Nunavut Planning Commission (NPC), 07/05/2013.



Appendix 1: Open House

During the open house, participants raised the following issues:

- Concerned about oil off Baffin Island near Greenland (oil spills and damage to environment).
- Saw lights under the water (possibly a sub) off the coast of Hall Beach, and is concerned about sovereignty.
- Concerned about mines already started.



Appendix 2: Elected Officials Meeting

The elected officials meeting was attended by the Mayor and members of the Hamlet Council and HTO. During the meeting, participants raised the following issues:

- We are quite concerned about hunting areas.
- We may want to make an access road beyond the hamlet boundary to help the hunters have an easier way to get to the hunting areas.
- We are losing Inuktitut place names.
- We have made an economic development plan, and are working to come up with an agreement for tourism projects.
- There needs to be a plan in place soon.
- We need to make a plan that we are able to use. We are losing our traditional way of life. We need tools to do this. I worry about our kids and grandchildren. Without the right tools they are not going to be able to do what they need to do.



Appendix 3: Questions and Answers

During the community workshop, there was a question and answer period, which included a discussion of the following topics:

- It seems like the NPC is finally doing what you have to do according to NLCA. The two main topics you have discussed are mining exploration and oil & gas exploration. These two explorations use planes and helicopters and they're not the only ones disturbing. We know that diamonds exploration also uses planes or helicopters and there will be a lot more interest in it because we know they've found some in our part of area. Have you guys have thought about this? When you say Mining Exploration, does that include diamonds?
 - The Commission answered that all kinds of exploration activities are considered, including diamonds.
- There's an exploration close by near Iqalugaaryuk. If there will be an exploration the QIA would have to be cautious because we have heard it will be paid for by Chinese. Also there is a camp site at Nunaqpariarvik where Hall Beach people go to. It's where Hall Beach residents usually put tents to camp. We had tried to protect that area and a ship arrives and brings huge drilling equipment and other heavy equipment and it destroyed the area and the area I am referring to is our hunting ground for caribou during the Fall. One of the hunters had mentioned before that someone should take pictures of Iqalugaaryuk this moment because the scenery will change when there's mining exploration open. At this moment I would like Iqalugaaryuk be more protected than Nuluyak (Mary River), I hope we'll be heard anyways Nuluyak (Mary River) is being used by the land and sea and right to archaeological sites what I am trying to say is protect Iqalugaaryuk area because I don't want it to become like the Mary River project.
 - The Commission answered that the Nunavut Impact Review Board is working with people who are interested in mining explorations at Iqalugaaryuk, and also at Mary River and their regulations and conditions have to be same.
- Thank you so much for coming to our community. I know you have a big job to do. It was mentioned that our hunting grounds are very close. We have a lot of fishing areas, walrus grounds, and caribou hunting grounds. Our ancestors have lived here and their sod houses are sort of everywhere and their old tent rings. we people of Hall

Beach are aware of them and if there is any interest on oil or gas exploration or mining exploration I would not be comfortable if these explorations open. There was an interest on Iqalugaaryuk and they wanted to open jobs and when they held an AGM we all put our hands up, so it would create jobs. To date it's becoming an organization, and jobs are opening, and I wish not to see any exploration open besides that. Also, the boat that travels from Iqalugaaryuk to Hall Beach isn't safe.

- There are beginning to be more and more cabins near all of the communities. This will have to be considered. Had a cabin near a DEW line site being cleaned up, and was asked to move the cabin because gravel was needed for the cleanup. We didn't want it destroyed. Camp sites should also be protected for a healthier lifestyle. I am not only referring to my cabin but the others who have cabins too.



Appendix 4: Community Workshop Scanned Maps

Two groups completed the mapping session to identify important areas. This Appendix contains the maps that were used by participants to identify areas that are important to the following land use planning goals:

- Protecting and Sustaining the Environment
- Encouraging Conservation Planning
- Building Healthier Communities
- Encouraging Sustainable Economic Development
- Mixed Use

Also included on each map is a reference table that includes the specific values that were identified for the area.

During the mapping portion of the community workshop, the following concerns were raised that did not apply to a specific area that was identified on the maps:

- Community drinking water supply is very important
- Support commercial fisheries in areas identified around community
- Concerned with oil and gas in Nunavut



15/20

Code	Comments
------	----------

XP1	Concerned with activities disturbing caribou including low flying helicopters. Migration route in late fall.
XP2	Snow goose nesting. Concerned with activities that would disturb nesting geese.
XP3	Snow goose nesting. Concerned with activities that would disturb nesting geese.
XP4	Would like to see protection for caribou migration
XP5	Nesting for eider ducks
XP6	Protection for snow goose nesting
XP7	Spring and summer camps for seal hunting, fishing, hunting snow geese and caribou along the shore.
XP8	Hunting beluga and seals. Also want protected for caribou hunting.
XP9	hunting walrus and picking arctic tern eggs (on small islands not shown on map)
XP10	Important fishing lake. Cabins all around. Major source of fish.
XP11	snow goose nesting, fishing area. Needs protection.
XP12	polar bear denning area that needs protection
XP13	Important caribou hunting area. (In addition to XP1)
XP14	Trout fishing area
XP15	caribou hunting in the summer
XP16	polar bear denning area
XP17	polar bear mating area. Protect in spring when mating.

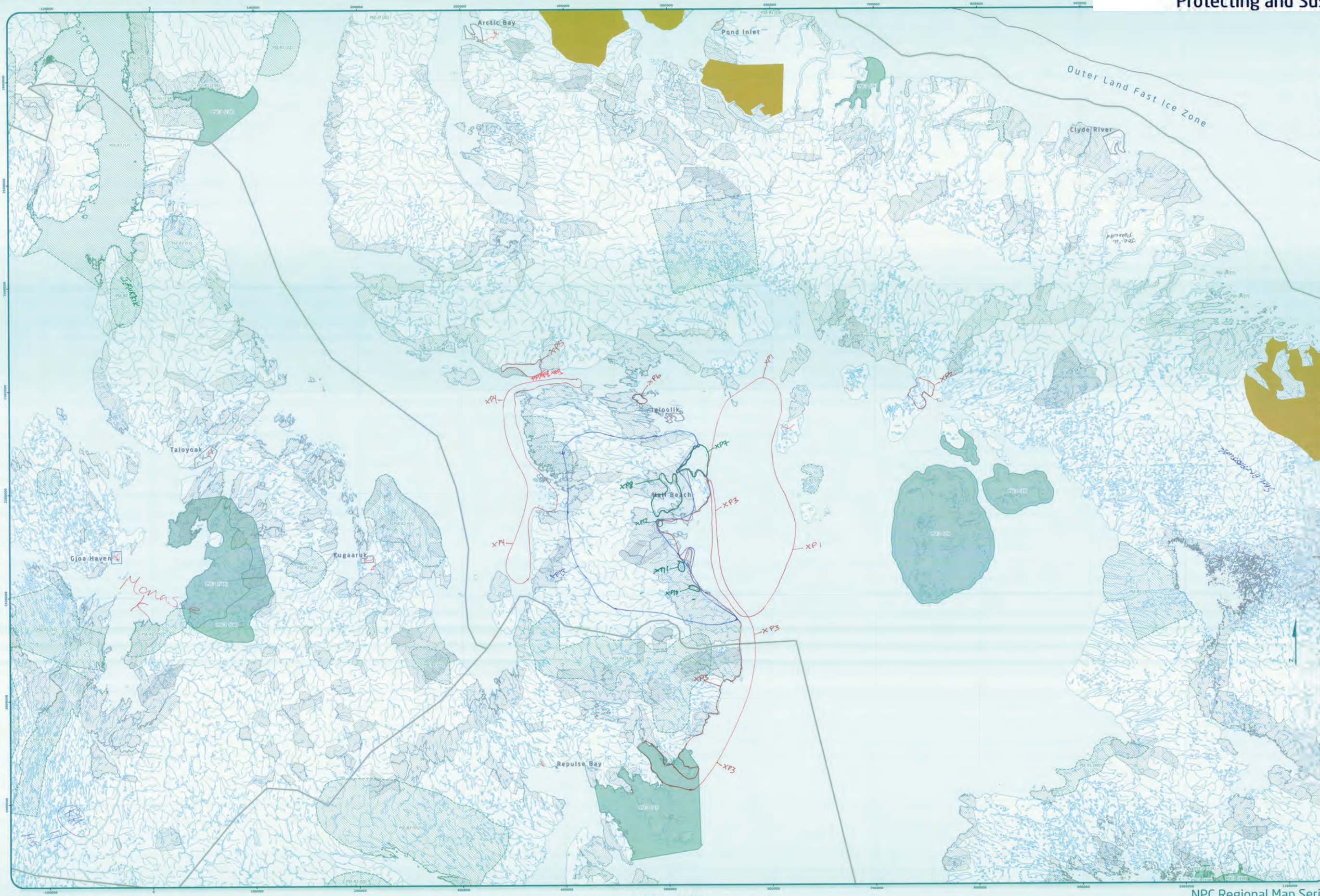
MAP 1 of 5

Saturday, February 2

Hall Beach - Group 2 Results Protecting and Sustaining the Environment

PROTECTING AND SUSTAINING THE ENVIRONMENT (PSE)

Scale 1:1,000,000



Designations	Permitted Uses	Prohibited Uses
Established Parks (Land Use Plan does not apply)	Recreation, Research, Tourism, Recreation, Research	All Other Uses
Established Parks (Land Use Plan does not apply)	Recreation, Research, Tourism, Recreation, Research	All Other Uses
Established Parks (Land Use Plan does not apply)	Recreation, Research, Tourism, Recreation, Research	All Other Uses

Reference Table for Recommendations

Project Provisions located in a key first frontier site should take into account impacts on the indigenous community and its way of life.
Project Provisions located in historic sites, strong evidence should take into account impacts on cultural values, land covering areas and indigenous values.
Project Provisions located in areas of open known, cultural and/or scientific value should take into account impacts on the value of cultural heritage.
Project Provisions located in areas of open known, cultural and/or scientific value should take into account impacts on the value of cultural heritage.
Project Provisions located in areas of open known, cultural and/or scientific value should take into account impacts on the value of cultural heritage.

Code	Comments
XP01	Area where walrus are - most of walrus population is there year round. Abundance of wildlife very close to Hall Beach. If you want to find walrus, will find them inside this circle. The area is heavily used by the people Hall Beach
XP02	Ipiuti (place name), this is the site that has archaeological artifacts and importance that date way back. It is also used heavily by snow geese. This is the area where many snow geese used to be caught put into traditional container, stored (cached) for the winter here in Ipiuti. Needs to be protected.
XP03	All this area used in summer when going out by boat. Widely used in summer for Narwhal and Walrus hunting.
XP04	Potential for finding Polar Bear in area - Polar Bear hunting to Gulf of Boothia. Want sea in area protected because it is Polar Bear hunting area. Two different bear stocks, Hall Beach side and Boothia side. Also Narwhal - in Fury and Hecla Strait
XP05	Want all of this protected because there are Narwhal in these fiords.
XP06	Also Narwhal going through area
XP07	We go seal hunting in this area. All different types of seals.
XP08	Lots of Arctic Char & Lake Trout in lake
XP10	Lake inside - Lake Trout, Arctic Char, and Landlocked Arctic Char
XP11	Two lakes inside - Lake Trout, Arctic Char, and Landlocked Arctic Char
XP12	Two lakes inside - for fish - will be impacted by mine company by road when starting mine. ATV's cross creeks to go caribou hunting.
XP13	Caribou hunting area both by ATV & snowmobile

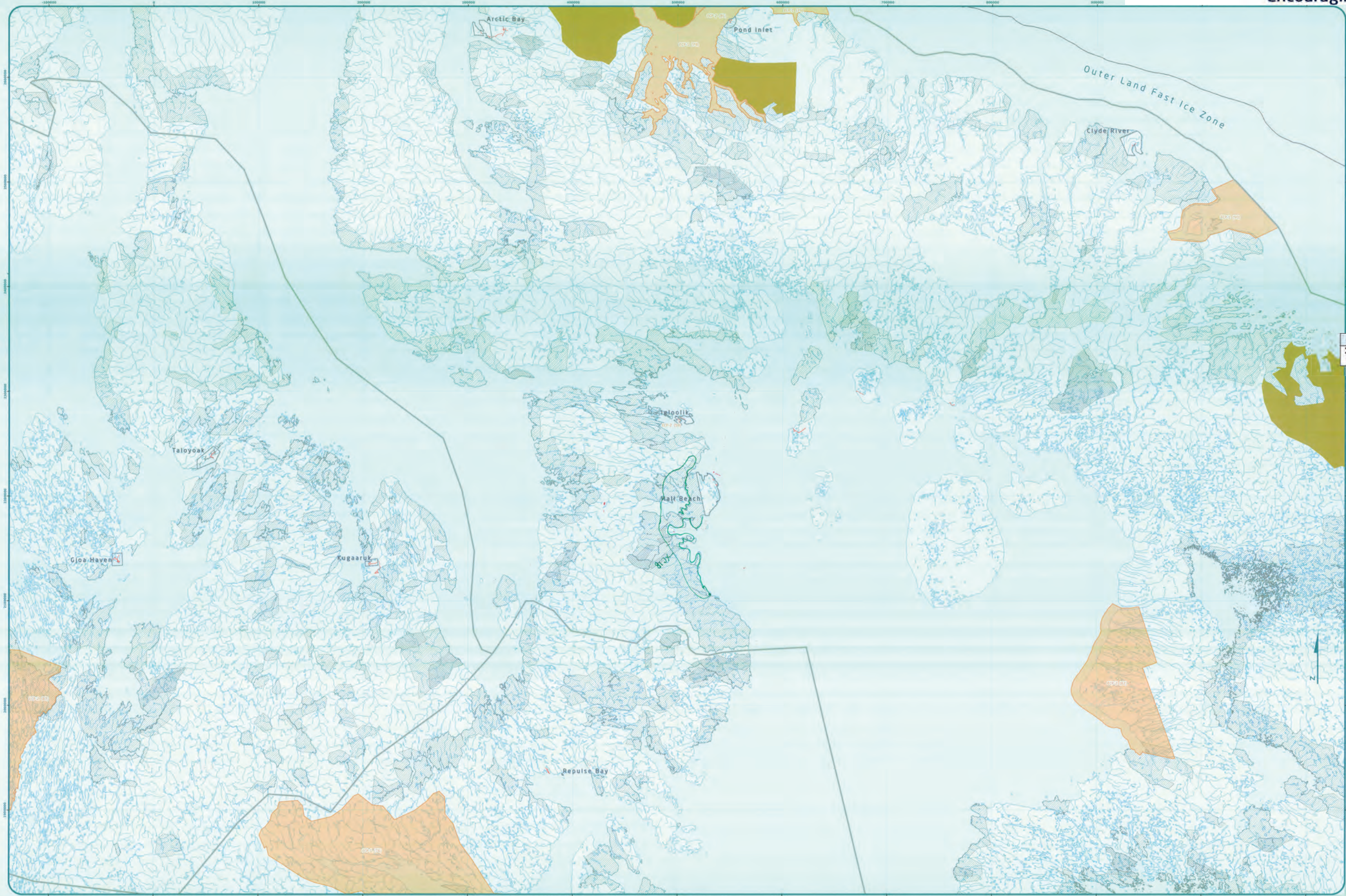
IGLOOLIK-HALL BEACH

Scale 1:1,000,000

NPC Regional Map Series

Map Information and Metadata

Map Scale: 1:1,000,000
Map Date: February 2013
Map Author: NPC
Map Project: Hall Beach - Group 2 Results
Map Purpose: Protecting and Sustaining the Environment
Map Data Sources: Various sources including the Government of Nunavut, the Government of Canada, and the National Park Service.
Map Distribution: Available for download from the NPC website.
Map License: Creative Commons Attribution-NonCommercial-ShareAlike 4.0 International License.



Legend:

- Road
- Established Parks and Open Space (not wet)
- Vuit Drowned Lands (Sub-Surface)
- Vuit Drowned Lands (Sub-Surface)
- Administrative Boundary

Designations	Permitted Uses	Prohibited Uses
Wetland	Canals, Waterways, Aqueducts	Recreation, Tourism
Wetland	Recreation, Tourism, Aqueducts	

Reference Table for Recommendations

Wetland	Wetland
Wetland	Wetland

Code	Comments
XC18	Snow goose nesting. Would like to see conservation.

[illegible]

Community: High Bay
 Location: Community Center
 Region: North Bay
 Date: March 2015
 Community Title: Map
 Map #

Vegetation of the Community is/are a prehistoric
 forest/coral mangrove/palm/other.

1.		16.
2.		17.
3.		18.
4.		19.
5.		20.
6.		21.
7.		22.
8.		23.
9.		24.
10.		25.
11.		26.
12.		27.
13.		28.
14.		29.
15.		30.

CONFIDENTIAL

Signature of Mapper: Alvin
 Signature of Community: Community
 Date: March 2015

[illegible]

[illegible]

Code	Comments
XC14	Lots of caribou around Roche Bay area to be impacted by helicopters, airplanes. Wildlife in Nunavut is being destroyed.
XC15	In summer we check coastline for caribou hunting.
XC16	Winter caribou hunting, also exploration in area called "Tuktu mine"

<p>Community/Location: _____</p> <p>Region: _____</p> <p>Date: _____</p> <p>Community #/ID: _____</p> <p>Map # _____</p>		<p style="text-align: center;"> <u>Intervista Programmata (Interview)</u> <u>Community Organized/Planned Interview</u> <u>Guided Interview</u> </p>
<p>1. _____</p> <p>2. _____</p> <p>3. _____</p> <p>4. _____</p> <p>5. _____</p> <p>6. _____</p> <p>7. _____</p> <p>8. _____</p> <p>9. _____</p> <p>10. _____</p> <p>11. _____</p> <p>12. _____</p> <p>13. _____</p> <p>14. _____</p> <p>15. _____</p>		<p style="text-align: center; font-size: 2em;">HBBB</p> <p>16. _____</p> <p>17. _____</p> <p>18. _____</p> <p>19. _____</p> <p>20. _____</p> <p>21. _____</p> <p>22. _____</p> <p>23. _____</p> <p>24. _____</p> <p>25. _____</p> <p>26. _____</p> <p>27. _____</p> <p>28. _____</p> <p>29. _____</p> <p>30. _____</p>
<p>Signature of Mapper: _____</p>		



Coordinate System: EPSG 42304 LCC
Projection: Lambert Conformal Conic
Datum: North American 1983
False Easting: 0.0000
False Northing: 0.0000
Central Meridian: -95.0000
Standard Parallel 1: 49.0000
Standard Parallel 2: 77.0000
Latitude of Origin: 49.0000
Units: Meter

[illegible]



Designations	Permitted Uses	Prohibited Uses
BHC-1	Roads, Railways, Utilities and Corridors	
BHC-2	Roads, Railways, Utilities and Corridors	
BHC-3	All uses except those Prohibited	Mining
BHC-4	Hydro electrical and related infrastructure	
BHC-5	Storm, Recreation and Research Municipal Services	
BHC-6	Municipal Services	All Other Uses
BHC-7	Municipal Services	
BHC-8	Remediation and Reclamation Activities	All Other Uses
BHC-9	Remediation and Reclamation Activities, CHD Operations and Activities	All Other Uses
BHC-10	CHD Operations and Activities	All Other Uses

Reference Table for Recommendations	
BHC-R1	Project proposals located in the Huasteca River Area of Interest should take into account impacts on the cultural value of the area.
BHC-R2	Project proposals located in areas of traditional land use should take into account impacts on the cultural value of the area.
BHC-R3	Project proposals located in a community water supply watershed should take into account impacts on the quality and quantity of community drinking water.
BHC-R4	Project proposals located in a municipal Aerodrome should take into account impacts on aerodrome safety.

Code	Comments
CI19	Cabin for eggng and fishing.
CI20	Cabin for eggng and fishing.
CI21	Cabin for eggng
CI22	Cabin area
CI23	Cabin area
CI24	Cabin area
CI25	Cabin area

Community: Blue Beach
 Location: Community Hall
 Region: North
 Date: March 2009
 Community ID# _____
 Map # Map 310

Signatures of the Community sign-in in permission
 form to conduct mapping activity as individuals

1.	14.
2.	17.
3.	18.
4.	19.
5.	20.
6.	21.
7.	22.
8.	23.
9.	24.
10.	25.
11.	26.
12.	27.
13.	28.
14.	29.
15.	30.

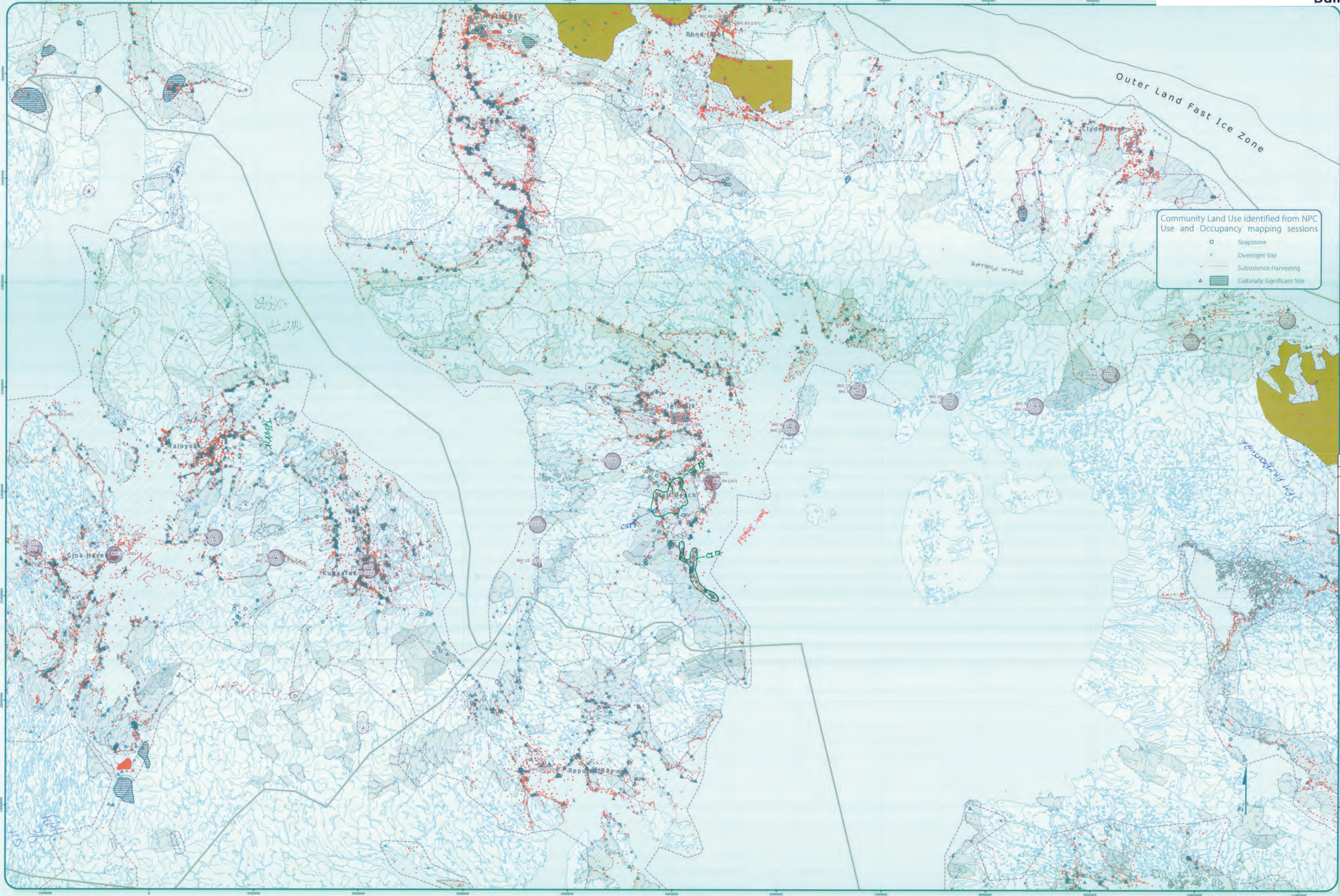
Signature of Mapper: Phyllis

CONFIDENTIAL
 ᐅᐅᐅᐅᐅᐅ ᐅᐅᐅᐅᐅᐅ
 Nunavut Planning Commission

MAN 3 of 5

 Lambert Conformal Conic Projection
Datum: North American 1983
False Easting: 0.0000
False Northing: 0.0000
Central Meridian: -95.0000
Standard Parallel 1: 49.0000
Standard Parallel 2: 77.0000
Latitude Of Origin: 49.0000

Units: Meter
Working Draft Sub-regional map data source
For Land Use Designations and Recommendations sources see draft Nunavut Land Use Plans and
material data source
User and Occupancy data from NPIC User and Occupancy mapping services, 2004 to 2012
Hatched created by hatching swamp in Hatched toolbox (version of 6540 user forums text) was
created by merging all 1,250,000 m² of the Nunavut Land Use Plans and the
50 hectares (and its subunit of Nunavut), country of Canada, Administrative boundaries (center of
district boundaries, created to reflect Regional trust Association jurisdictions, combined with mun-
icipal boundaries, provided by Natural Resources Canada (Canada's data on owned lands of Canada's
Territories and provinces, Administrative boundaries from the Government of Canada's
Data for areas within municipal boundaries obtained from Natural Resources Canada (Canada's
This map is to be used for reference purposes only (the
Any further use of this map or data therein must be authorized by contacting the Nunavut Plan
Commission at (867) 989-3145 or email nunavutplan@nunavut.ca
Monday, February 25,



Community Land Use identified from NPC
Use and Occupancy mapping sessions

- Soapstone
- x Overnight Site
- Subsistence Harvesting
- ▲ Culturally Significant Site



Legend for Inuit Owned Lands (Surface) and Administrative Boundary

- Roads
- Inuit Owned Lands (Surface)
- Administrative Boundary

Designations	Permitted Uses	Prohibited Uses
BHC-1	Roads, Railways, Utilities and Corridors	
BHC-2	Roads, Railways, Utilities and Corridors	
BHC-3	All uses except those Prohibited	Mining
BHC-4	Hydro electrical and related infrastructure	
BHC-5	Tourism, Recreation and Research	
BHC-6	Municipal Services	AI Other Uses
BHC-7	Municipal Services	AI Other Uses
BHC-8	Remediation and Reclamation Activities	AI Other Uses
BHC-9	Remediation and Reclamation Activities	AI Other Uses
BHC-10	Oil Operations and Activities	AI Other Uses

Reference Table for Recommendations	
BHC-11	Project Proposals located in the Inuvik River Area of Interest should take into account impacts on the cultural value of the area
BHC-12	Project Proposals located in areas of traditional land use should take into account impacts on the cultural value of the area
BHC-13	Project Proposals located in a community water supply watershed should take into account impacts on the quality and quantity of community drinking water
BHC-14	Project Proposals located in a municipal Aerodrome should take into account impacts on aerodrome safety

Code	Comments
C117	Community use - spring camping.
C118	Cabins at Hall Lake - use them to go fishing. Watershed of lake for drinking water. Potential to become contaminated by mineral exploration.
C119	Hall Lake has been cleaned up except for old airplanes from cold war.

Community Mapping Information

Community Name: HRBA

Community ID: 118

Community Type: Regional

Signatures of the Community Agency or its representative:

Signature of Mapper: _____

Coordinate System: EPSG:42304 UTM
Projection: Lambert Conformal Conic
Datum: North American 1983
False Northing: 0.0000
Central Meridian: -95.0000
Standard Parallel 1: 49.0000
Standard Parallel 2: 77.0000
Latitude Of Origin: 49.0000
Units: Meter

For Land Use Designations and Recommendations sources see draft Nunavut Land Use Plan and background material data source documents.

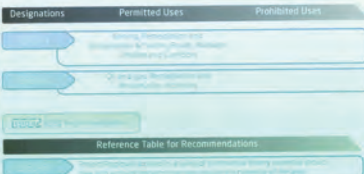
Use and Occupancy data from NPC Use and Occupancy mapping sessions, 2004 to 2011.

Map created by merging all 1:250,000 scale maps in Nunavut, version 2.0, and selecting all waterbodies over 50 hectares in size. Land outside of Nunavut, courtesy of Geomatics. Administrative boundaries consist of NPC then regional boundaries, created to reflect Regional Inuit Association jurisdictions, combined with municipal boundaries, provided by Natural Resources Canada cadastral data. Inuit Owned Lands (IOL) courtesy of Nunavut Tunngavik Incorporated. National parks from the Government of Nunavut. National Parks from Parks Canada. Data for areas within municipal boundaries obtained from Natural Resources Canada (cadastral data).

This map is to be used for reference purposes only for the NPC.

Any further use of this map or data therein must be authorized by contacting the Nunavut Planning Commission at: (867) 993-4625 or email commission@nplanning.ca

Map Date: February 25, 2013



Code	Comments
XD26	Soapstone

[illegible]

Annual Planning Committee
Community Councils Task
Local 444 Meeting Minutes

Community: Hill Beach
Location: Community Hall
Region:
Date: March 5, 2013
Community POC: map 4.1.15
Map #

Items to conduct mapping session on:


1. _____	16. _____
2. _____	17. _____
3. _____	18. _____
4. _____	19. _____
5. _____	20. _____
6. _____	21. _____
7. _____	22. _____
8. _____	23. _____
9. _____	24. _____
10. _____	25. _____
11. _____	26. _____
12. _____	27. _____
13. _____	28. _____
14. _____	29. _____
15. _____	30. _____

Signature of Mapper: Aroni

CONFIDENTIAL
ᑕᓄᐃᐅᔨᑦ ᐱᐅᐅᐅᐅᐅᐅ
Nunavut Planning Commission

40 20 0 20 40 60
Kilometers

Coordinate System: EPSG 42304
Projection: Lambert Conformal Conic
Datum: North American 1983
False Easting: 0.0000
False Northing: 0.0000
Central Meridian: -95.0000
Standard Parallel 1: 49.0000
Standard Parallel 2: 77.0000
Latitude Of Origin: 49.0000

 **Alberta**
Ministry of Natural Resources and Forestry
Natural Planning Commission
Commission of Enquête sur le Nord

Map 4 of 5

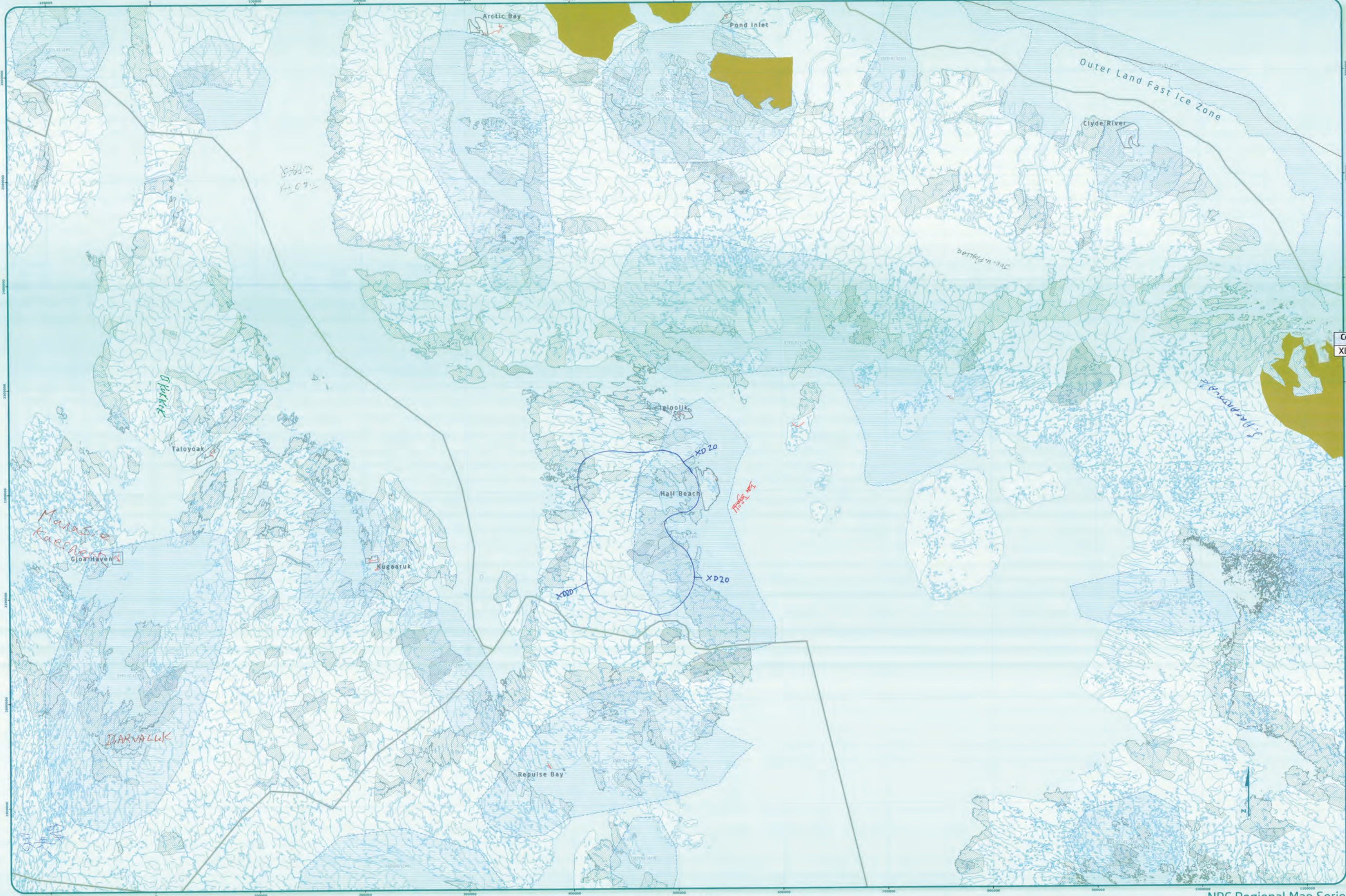
For Land Use Designations and Recommendations sources see link Nunavut Land Use Plan and the material data source

Boundary created by utilizing Stirling Heights in Hillside toolset courtesy of the Nunavut Government. The map was created by merging all 500,000 WTB shapefiles in Nunavut, version 2.0, and selecting all polygons 50 hectares in size. Land outside of Nunavut, country of Coorgates. Administrative boundaries created regional boundaries, created to reflect Regional Municipality Association parcels, combined with boundaries provided by Natural Resources Canada (cadastral data, Inuit Owned Lands courtesy of Nunavut Incorporated. Territorial parks from the Government of Nunavut, National Parks from Natural Resources Canada and areas within municipal boundaries obtained from Natural Resources Canada and the Nunavut Government.

Any further use of this map or data requires permission from the Nunavut Government. This map is to be used for reference purposes only. For more information contact the Nunavut Government at (867)709-4625 or email mtownsend@nunavut.ca

ENCOURAGING SUSTAINABLE ECONOMIC DEVELOPMENT (ESED)

Scale 1:1,000,000



Designations	Permitted Uses	Prohibited Uses
Established Parks (Land Use Plan does not apply)	Recreation, sports and leisure activities, hunting, trapping and fishing, and other traditional activities	Commercial development, industrial development, and other development that is inconsistent with the purpose of the park
Outer Land Fast Ice Zone	Recreation, sports and leisure activities, hunting, trapping and fishing, and other traditional activities	Commercial development, industrial development, and other development that is inconsistent with the purpose of the zone

Code	Comments
XD20	We hunt caribou in area and sell meat.

Signature of the Community Representative

Signature of the Mapper

Community Representative

Mapper

Coordinate System: EPSG 42304 LCC
Projection: Lambert Conformal Conic
Datum: North American 1983
False Easting: 0.0000
False Northing: 0.0000
Central Meridian: -95.0000
Standard Parallel 1: 49.0000
Standard Parallel 2: 77.0000
Latitude Of Origin: 49.0000
Units: Meter

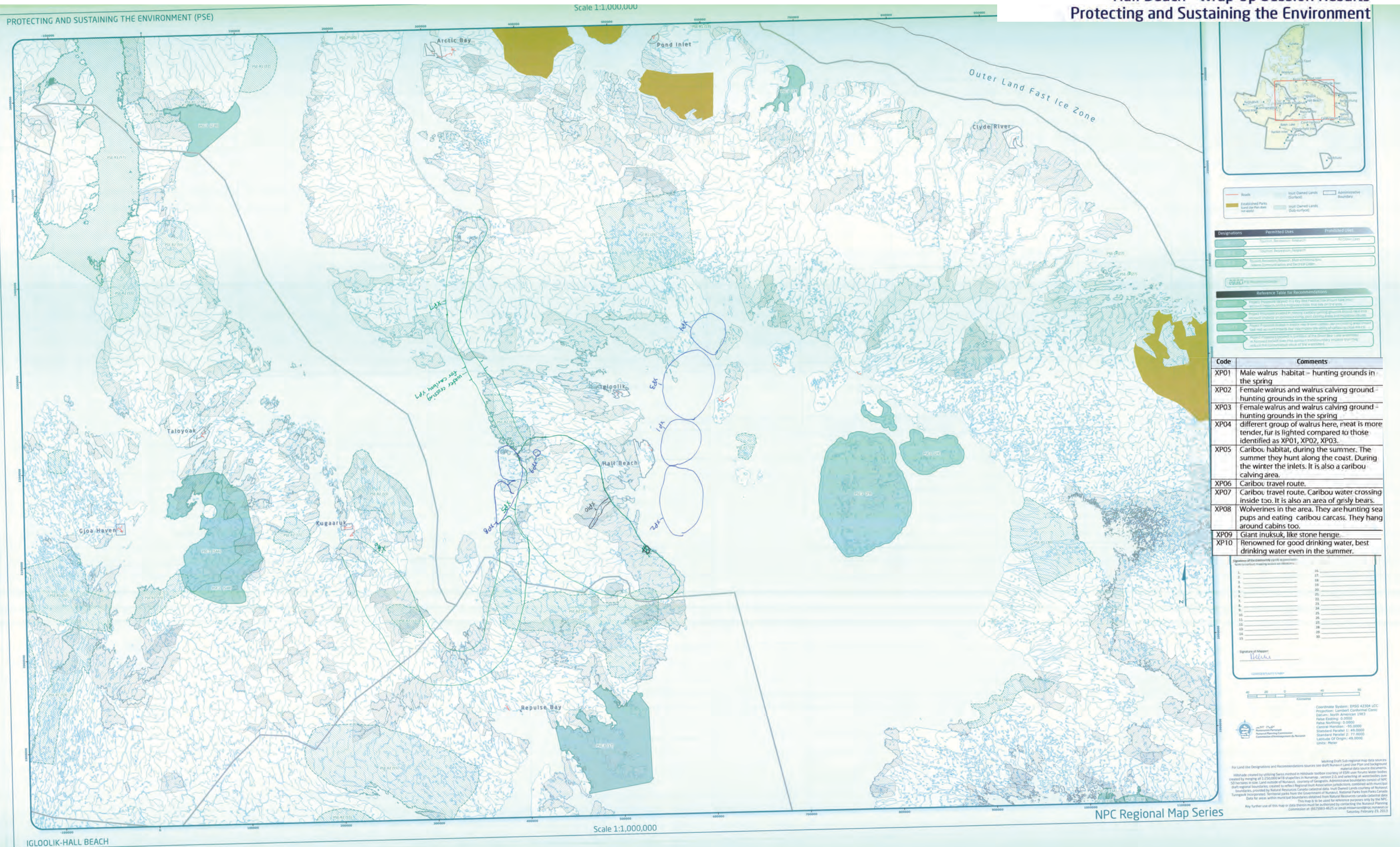
For Land Use Designations and Recommendations sources see draft Nunavut Land Use Plan and background information documents.
Habitat created by utilizing Swiss method in Habitatat toolbox (courtesy of GIS user forum) water bodies created by merging all 1:250,000 NTS shapefiles in Nunavut, version 2.0, and selecting all waterbodies over 50 hectares in size. Land parcels of Nunavut, courtesy of Geomatics, Administrative boundaries consist of NWC, draft regional boundaries, created to reflect Regional Inuit Association jurisdictions, combined with municipal boundaries, provided by Natural Resources Canada (selected data). Inuit Owned Lands (courtesy of Nunavut Tunngavik Incorporated). Territorial parks from the Government of Nunavut, National Parks from Parks Canada. Data for areas within historic boundaries are obtained from Natural Resources Canada (selected data).
This map is to be used for reference purposes only by the NWC.
Any further use of this map by data therein must be authorized by contacting the Natural Planning Commission at 867-7983-4625 or email info@nwc.nunavut.ca
Monday, February 25, 2013

Appendix 5: Wrap Up Session

A small group of participants returned to identify additional important areas during the wrap up session.

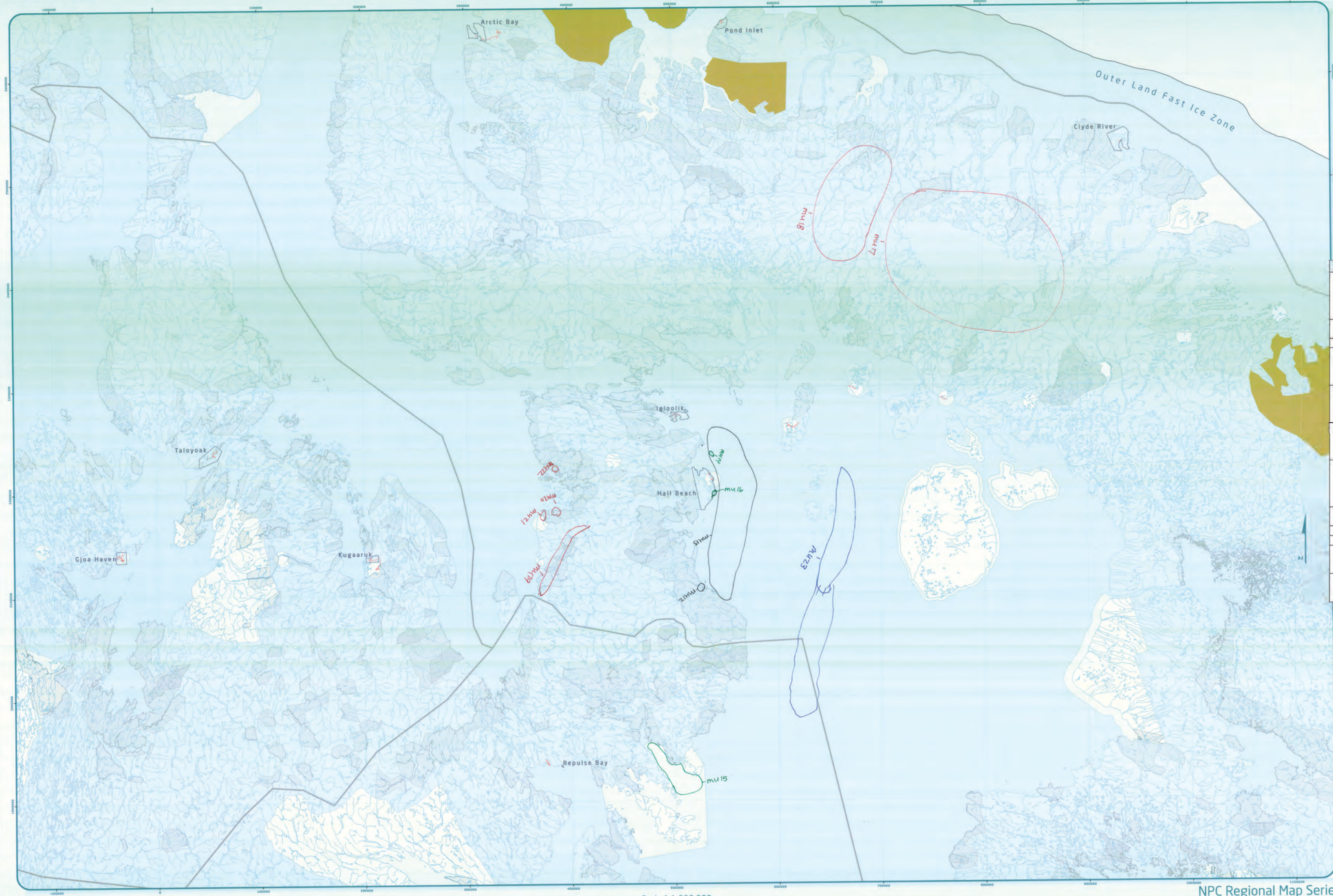


Hall Beach - Wrap Up Session Results



MIXED USE (MU)

Scale 1:1,000,000



Code	Comments
MU12	Mass slaughter happened here, there is a mass grave site. People were hunting seal and they were slaughtered. Before they were slaughtered there were no fish in the area, afterwards there are plenty of fish.
MU13	Walrus hunting area (refer to map 1, XP01, XP02, XP03).
MU14	Old Thule site, sod houses, old camp site.
MU15	beluga, narwhale migrate in the summer so they harvest in the summer, Hap seal, bearded seal in the area, Orca chased the seals and the walrus.
MU16	Cairn for the remains of a white person. He drowned here in the 1930s. Inuit found is partner walking and looked after him. They want the cairn protected.
MU17	Glacier is here, used by both locals and people in Arctic Bay. This area is good for caribou hunting and the fur from this caribou is good for clothing.
MU18	Encountered different humans, humans bigger than them. There are the remains of these giant humans and graves of them. Its marked by a fossil tree. this is the general area. It's hard to pinpoint.
MU19	Various inuksuk around here, traditional camps, sod houses.
MU20	Sod houses, historic sites
MU21	Sod houses, historic sites
MU22	Sod houses, historic sites. A respected elder lived here, his sons took him back for a visit a while ago.
MU23	Monster bears, 17ft high, live out in the ocean. They don't come onto the land. They make regular bears seem small.

Suggested Writing (handwritten) to be completed:	
1. <i>TRAVEL KIT</i>	16.
2. <i>TRAVEL KIT</i>	17.
3. <i>TRAVEL KIT</i>	18.
4. <i>TRAVEL KIT</i>	19.
5. <i>TRAVEL KIT</i>	20.
6. <i>TRAVEL KIT</i>	21.
7. <i>TRAVEL KIT</i>	22.
8. <i>TRAVEL KIT</i>	23.
9. <i>TRAVEL KIT</i>	24.
10. <i>TRAVEL KIT</i>	25.
11. <i>TRAVEL KIT</i>	26.
12. <i>TRAVEL KIT</i>	27.
13. <i>TRAVEL KIT</i>	28.
14. <i>TRAVEL KIT</i>	29.
15. <i>TRAVEL KIT</i>	30.



Coordinate System: EPSG 42304 LCC
Projection: Lambert Conformal Conic
Datum: North American 1983
False Easting: 0.0000
False Northing: 0.0000
Central Meridian: -65.0000
Standard Parallel 1: 49.0000
Standard Parallel 2: 77.0000
Latitude Of Origin: 49.0000
Units: Meter

Working Draft Sub-regional map data sources
For Land Use Designations and Recommendations sources see draft Nunavut Land Use Plan and background material data source documents.
Hillshade created by utilizing SRTM30plus in Hillshade toolbox courtesy of ESRI user forums water bodies created by merging all 2,500,000 1:250,000 scale maps in Nunavut, version 2.0, and selecting all waterbodies over 50 hectares in size. Land outside of Nunavut, courtesy of Geographic. Administrative boundaries consist of NPC draft regional boundaries, created to reflect Regional Inuit Association jurisdictions, combined with municipal boundaries provided by Natural Resources Canada (cadastre data). Inuit Owned Lands courtesy of Nunavut Government. Territorial parks from the Government of Nunavut. National Parks from Parks Canada. Nunavut. Data for areas within municipal boundaries obtained from Natural Resources Canada (cadastre data).
This map is to be used for reference purposes only by the NPC.
Data for areas within municipal boundaries must be authorized by contacting the Nunavut Planning Commission at (867) 983-4625 or email info@nunavut.ca
Monday, February 25, 2023

Appendix 6: Follow-up Meeting

The NPC returned to the community to review a draft version of this report with the Hamlet Council, Hunters and Trappers Organization, and Community Lands and Resource Committee. The meeting included:

- A presentation of a draft version of this report
- An overview of the mapped information that was recorded for each topic:
 - Protecting and Sustaining the Environment
 - Encouraging Conservation Planning
 - Building Healthier Communities
 - Encouraging Sustainable Economic Development
 - Mixed Use
- Potential changes to the classification of a few mapped areas were discussed and agreed to.
- General discussion and comments including:
 - Opportunities to provide additional comments
 - Timelines for completion
 - Place names should be included