

Kivalliq Inuit Association's Review: 2021 Draft Nunavut Land Use Plan

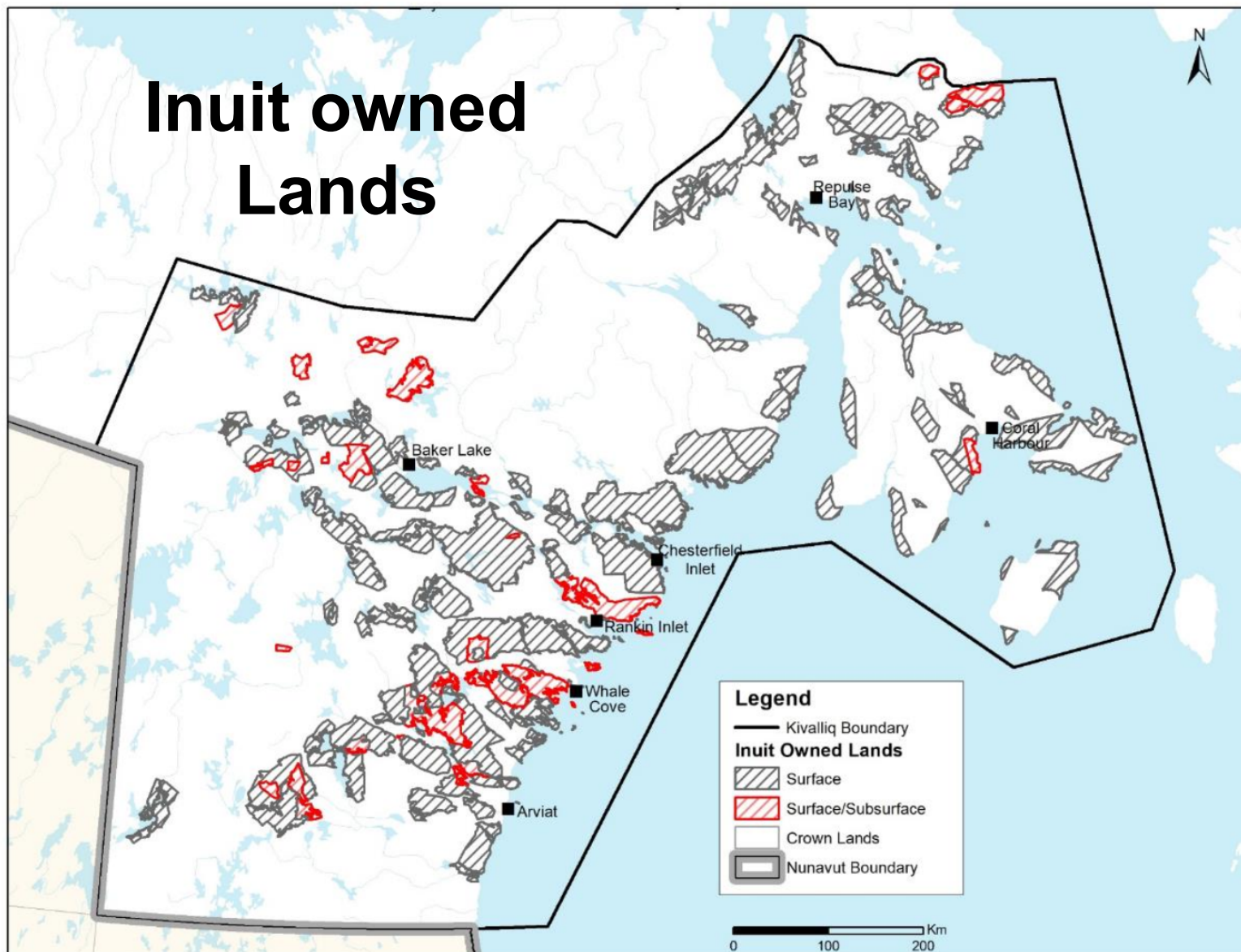
Rankin Inlet, September 22, 2022



- A. Outstanding issues
- B. Where KivIA supports and does not support 2021 DNLUP
- C. Recommendations for NPC

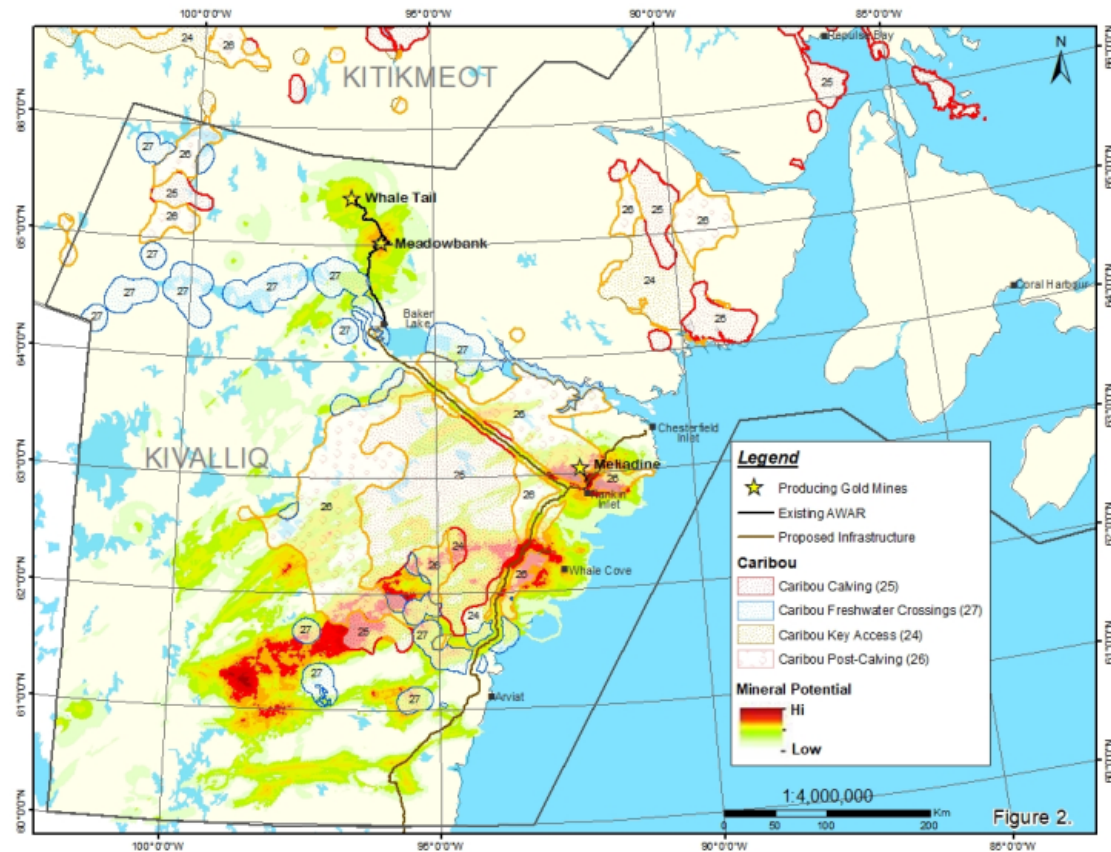


Inuit owned Lands



A. KivlA's outstanding issues

1. Restrictive protection for some caribou seasons
2. Restrictions on mining
3. Restrictions on the Kivalliq-Manitoba linear infrastructure corridor



(A1) Caribou issues

- a) Overly restrictive protection for caribou during calving and post-calving seasons
- b) *Qanuqtuurnarniq* (innovation and resourcefulness) missing as tools for protecting caribou
- c) Questionable map boundaries and dates for Limited Use and Conditional Use designations



(1a) Caribou issues: restrictive protection

Unnecessary
restrictions in
calving and post-
calving areas



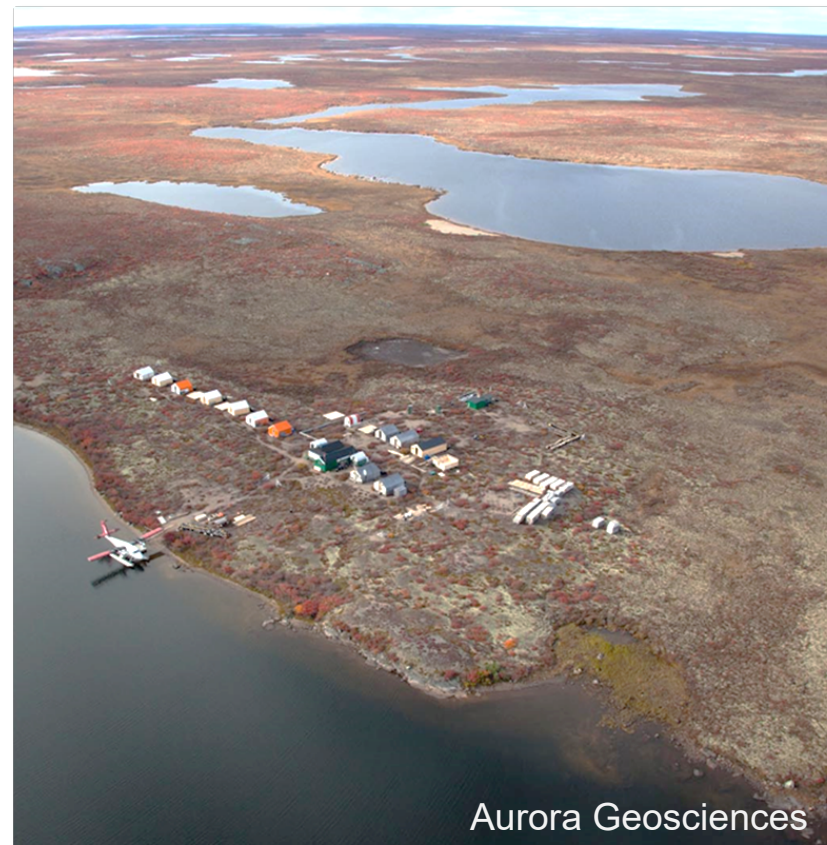
(1b) Caribou issues: tools

- Innovative and resourceful tools
- Caribou habitat
- Regional planning



Mobile Measures

- Mobile Measures: a set of rules to avoid and minimize interaction between caribou and exploration activities



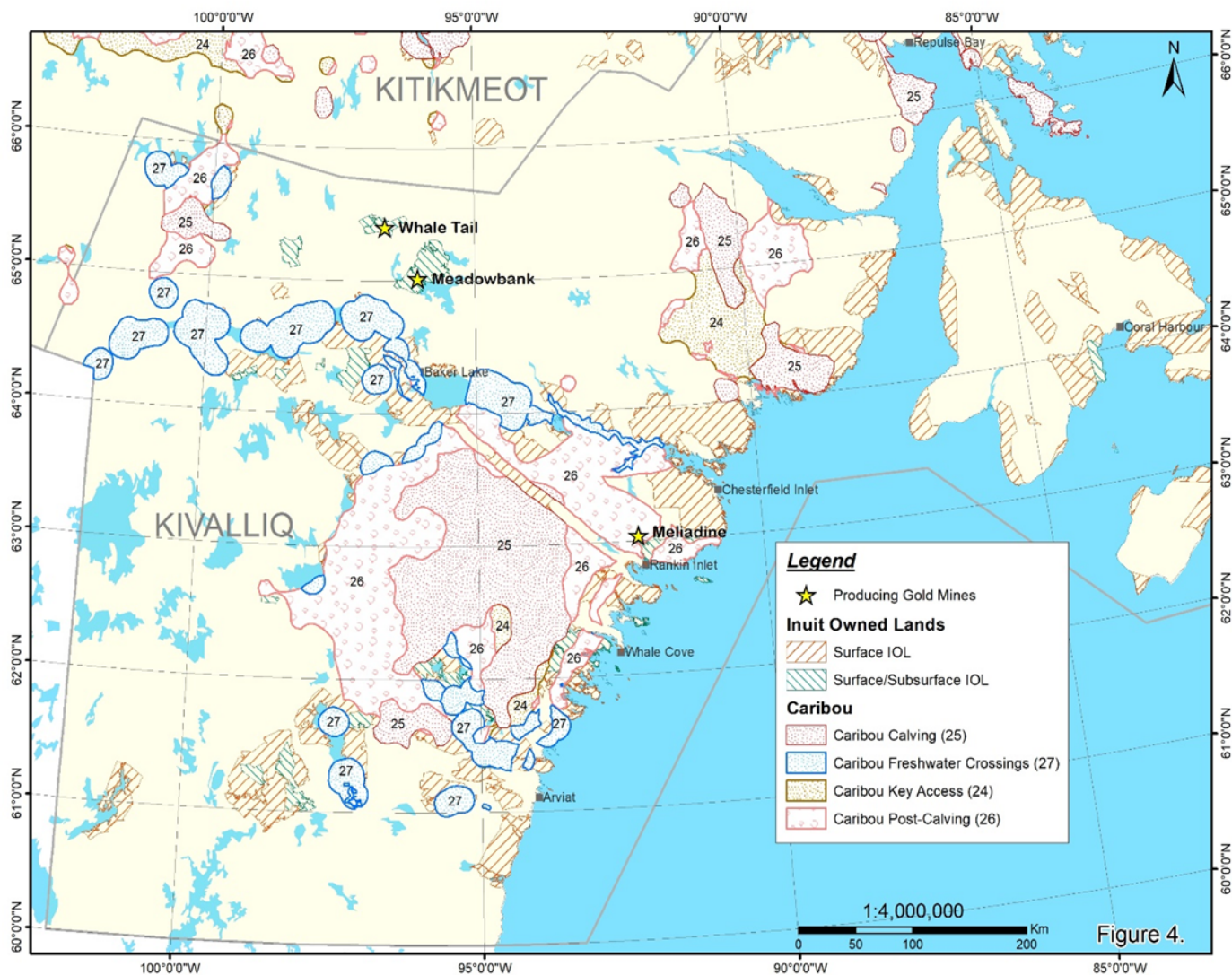
Aurora Geosciences

Mobile Measures

- Monitoring to detect the approach of caribou
- Thresholds to trigger degrees of mitigation



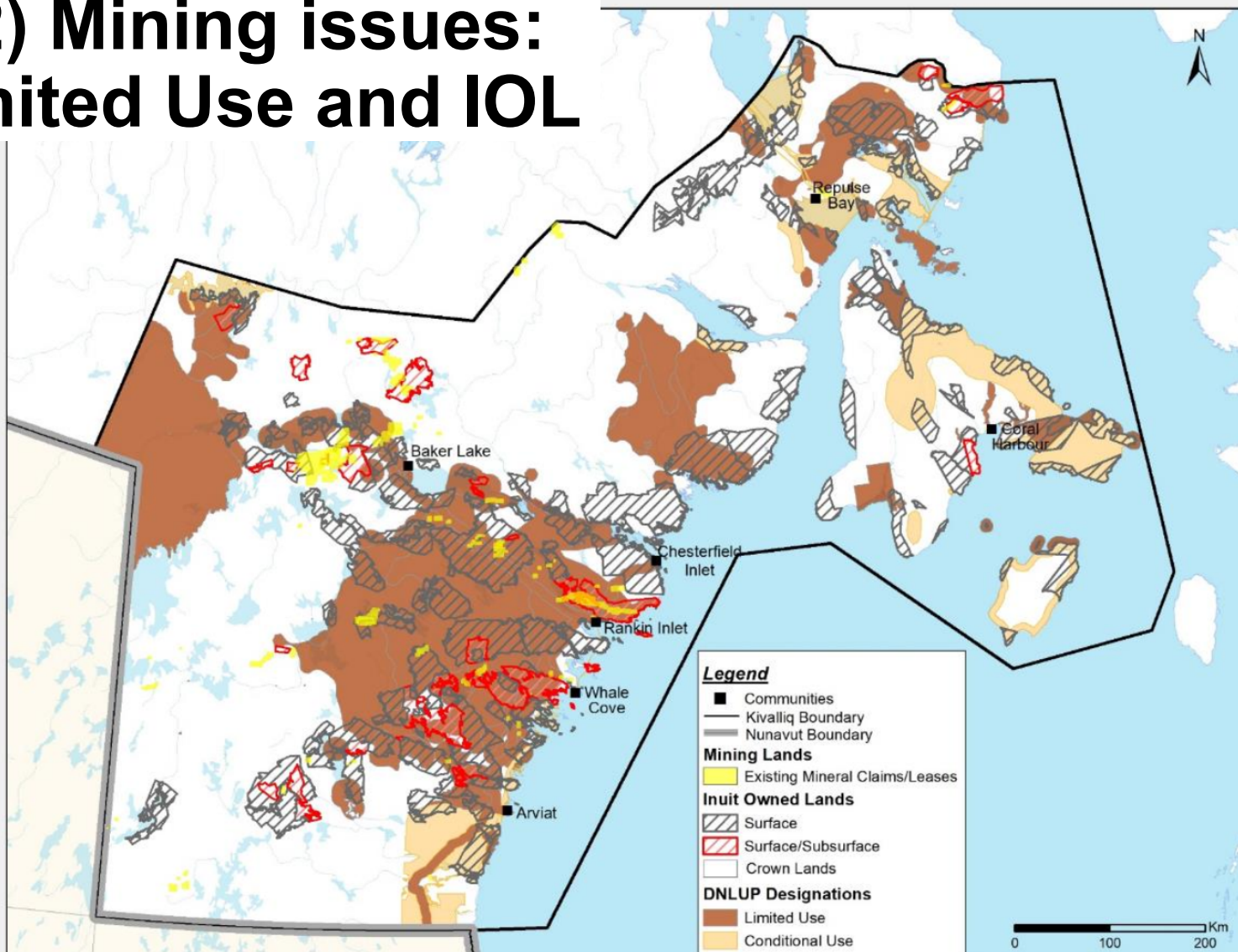
(1c) Caribou issues: mapping



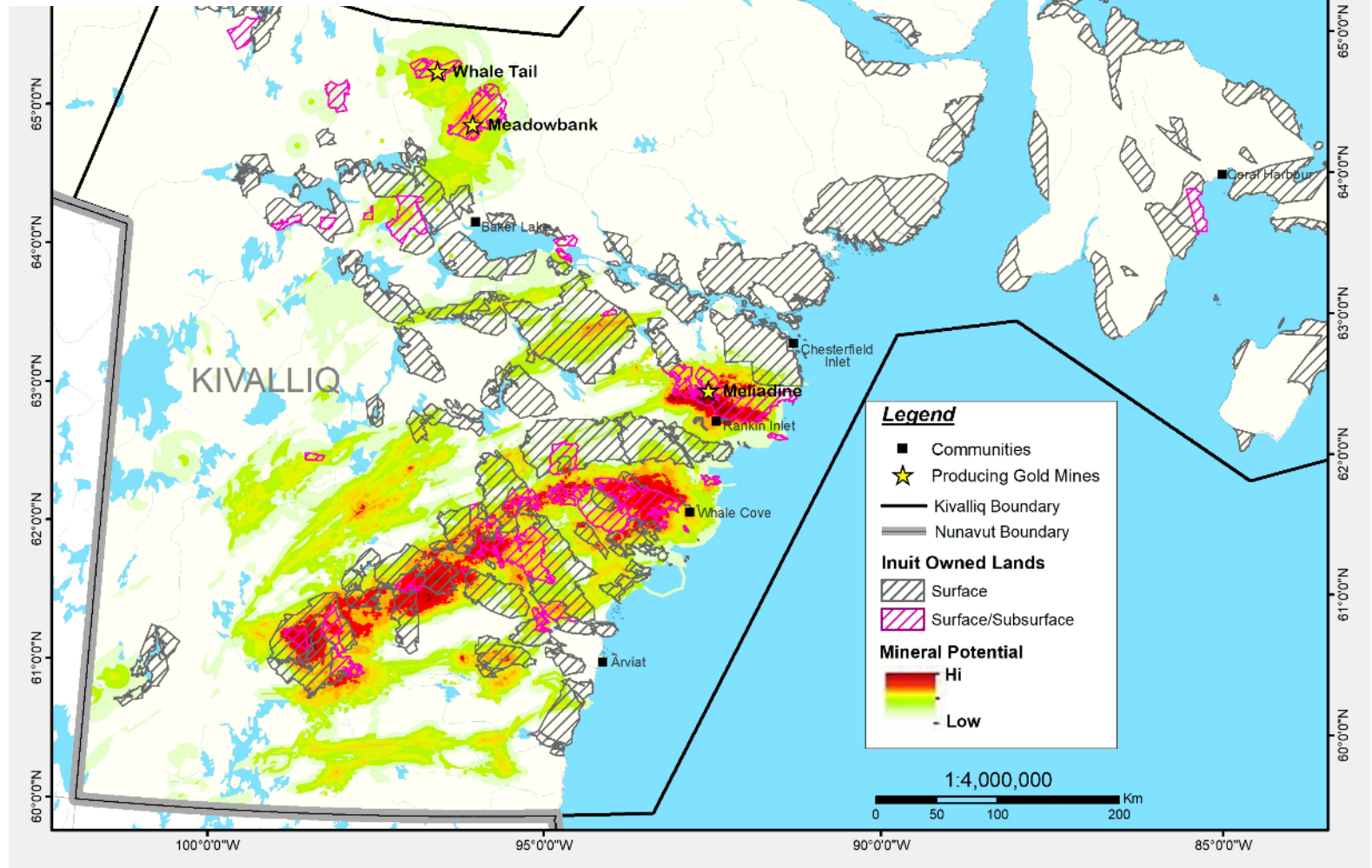
Caribou: KivIA recommended land use designations

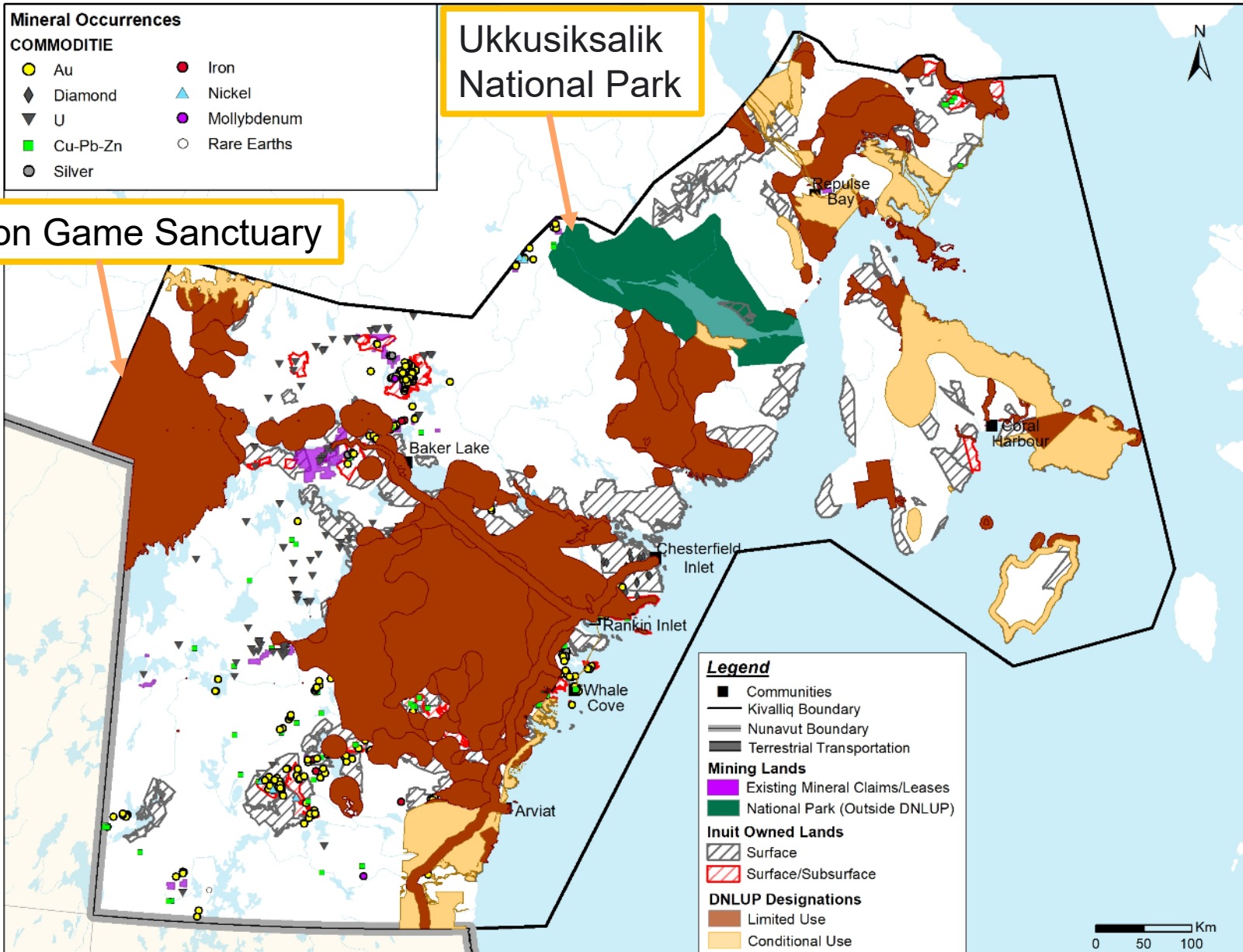
Seasonal range	Limited Use	Conditional Use	Mixed Use	Valued ecosystem components
Calving	NPC	KivIA		
Post-calving	NPC	KivIA		
Key access corridors	NPC	KivIA		
Freshwater crossings	NPC/ KivIA	KivIA		
Sea-ice crossings		NPC/KivIA		
Rutting areas				NPC/KivIA
Migration corridors				NPC/KivIA
Summer and fall				NPC/KivIA
Winter ranges (mainland)				NPC/KivIA

(A2) Mining issues: Limited Use and IOL



(A2) Mining issues: mineral potential



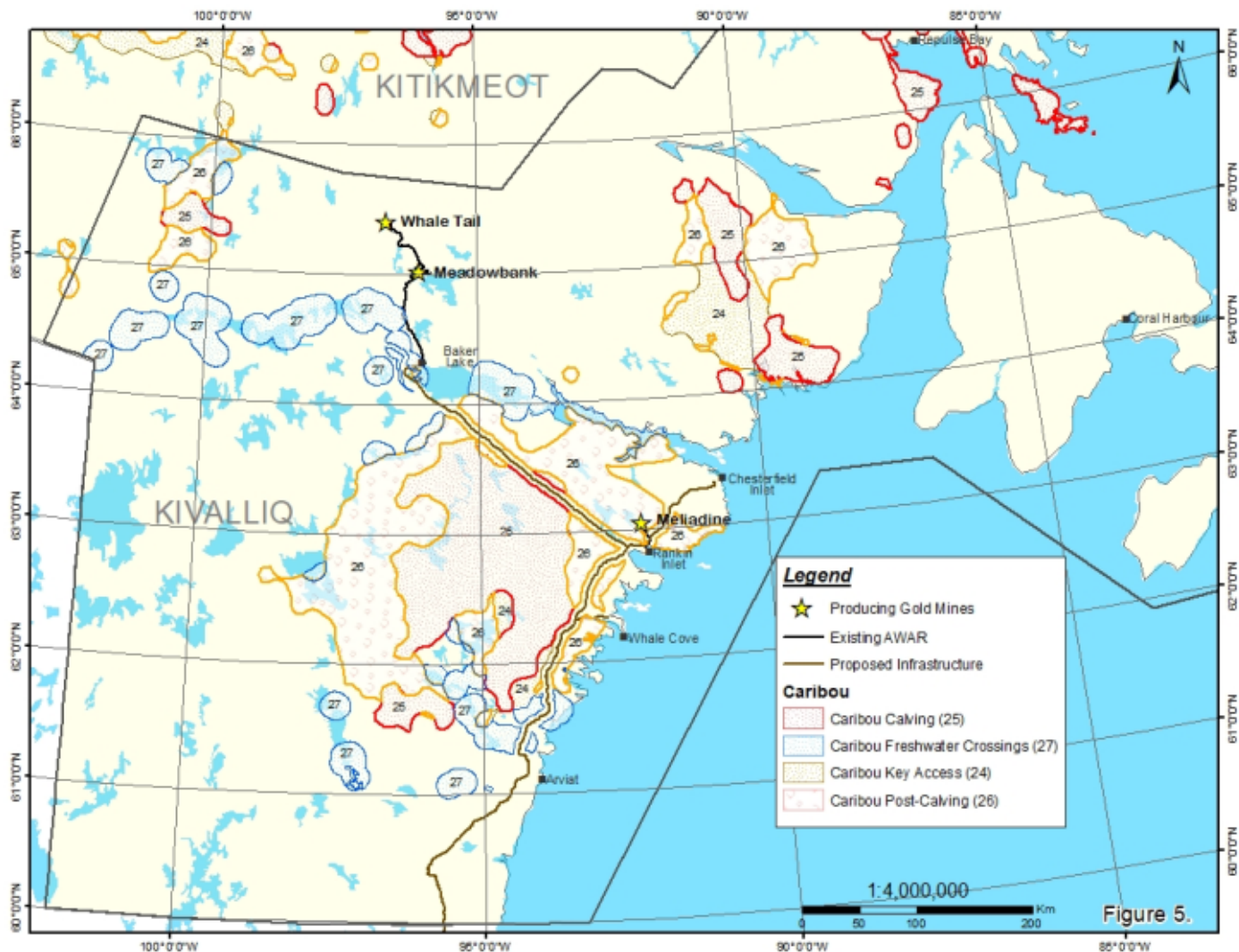


(A3) Issue: linear infrastructure corridor

1. Kivalliq-Manitoba corridor included in 2021 DNLUP
2. Clarification needed whether this infrastructure and its expansion is compatible with Limited Use



(A3) Issue: linear infrastructure corridor



(A3) Linear infrastructure corridor: Recommendation

Designate the Kivalliq
-Manitoba corridor as
Conditional Use

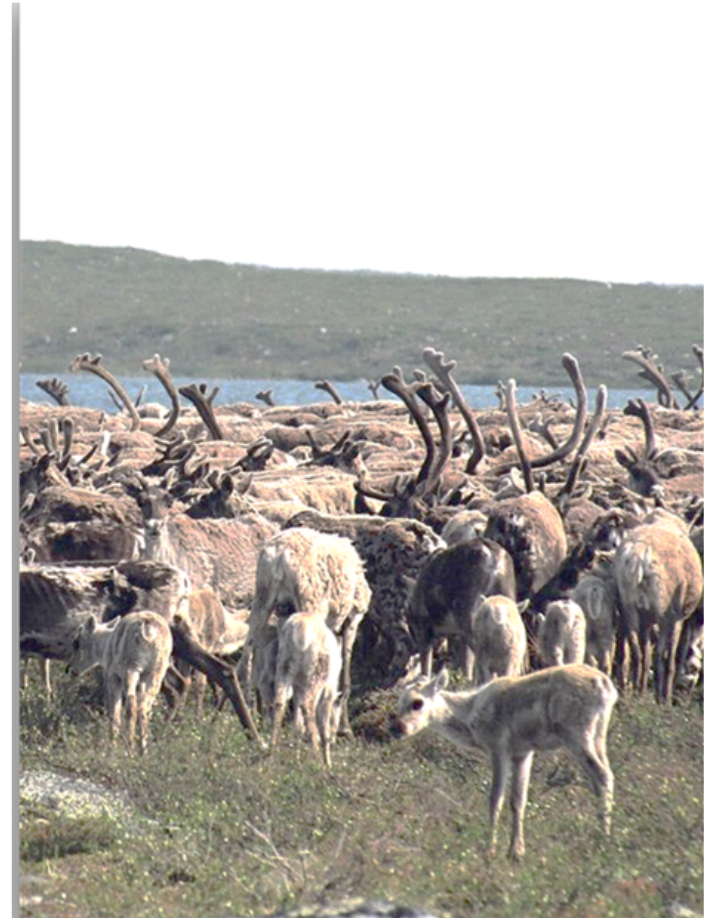


(A3) Issues: drinking water, community areas of interest and easements

- Arviat community drinking water
- Conditional Use to allow regional decision making
- Public easements be incorporated into the Existing Interest Schedule A of the 2021 DNLUP

B. KivIA support for 2021 DNLUP

- Recognition of the importance of caribou and knowledge sharing
- Protection of caribou freshwater crossings



C. KivIA overall recommendations: caribou

- Protect caribou on calving and post-calving ranges using **Conditional Use**
- Innovative tools including Mobile Measures
- Update mapping



C. KivIA overall recommendations: Mineral Exploration and Mining

- Recognize importance mining to Nunavut economy
- Support mining while protecting caribou
- Use updated mineral potential mapping

