

DE BEERS GROUP

DRAFT NUNAVUT LAND USE PLAN

[illegible]

De Beers Group / Chidliak Project

$\rho^c \sigma^b \wedge \tau^b$

Presentation to the Nunavut Planning Commission, November 19, 2022

ᐅᓂᔭᐅᑦᕐ ᐅᑑᓄᑦᕐ ᓄᑲᓂᑦᕐ <ᑦᑲᐅᑦᕐ, ᓄᐱᐱᑦ 19, 2022

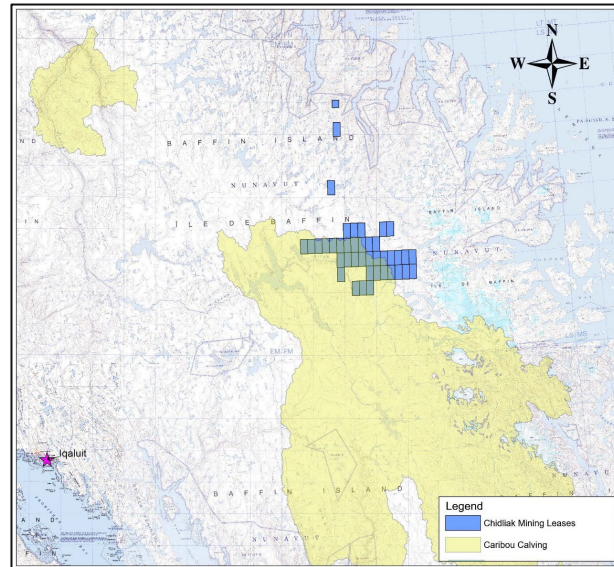
POTENTIAL IMPLICATIONS TO THE CHIDLIAK PROJECT



- De Beers is proposing to develop a Future Smart diamond mine on the Hall Peninsula
- The draft Nunavut Land Use Plan (NLUP) specifically prohibits mineral exploration and production in the region
- The dNLUP includes an exception for the Chidliak Project from the prohibitions, however it also requires other agencies to include terms and conditions in their permits and approvals to remain compatible with the dNLUP. This framework could make the project unviable.
- We suggest that rather than imposing a Limited Use Zone over much of the Hall Peninsula, the NPC instead identify caribou as VEC in the region.
- The Chidliak Project will be designed to be compatible with Inuit values, including caribou conservation



-
- BAFFIN ISLAND**
- Norvilting Lake
- Pangnirtung
- Cumberland Sound
- Imadjuak Lake
- HALL PENINSULA
- Chidliak Project**
- Iqaluit
- Frobisher Bay
- Davis Strait
- 0 800 1,600 1,600
- 1:40,000,000

[illegible]

2022
 ၂၄၁
 ၁၄၄၁၄၁၄၁
 ၁၄၁

[illegible]

ፊርማ የራሱን ስም ማረጋገጥ
የራሱ ስም ማረጋገጥ
ለራሱ ስም ማረጋገጥ

2.2.1-1 The caribou calving areas shown on Map A are Limited Use areas within which the following incompatible uses are prohibited:

- (a) oil and gas exploration and production;
- (b) mineral exploration and production;
- (c) quarries;
- (d) hydro-electrical and related infrastructure;
- (e) wind turbines for electrical generation that are over 15 m in height and related infrastructure; and
- (f) linear infrastructure.

2.2.1-2 Project proponents must cease all uses at those sites, except research and tourism related to caribou conservation, during the dates identified in Table 2: Caribou Seasonal Restrictions. [See Map A and Table 2 – Site # 25]

The Limited Use Zone includes about half of the Chidliak leases and includes the target kimberlites and mine infrastructure areas.

ՀԳՄԵՄԵՆ ԱՆՈՎԵՐՅԱՆ

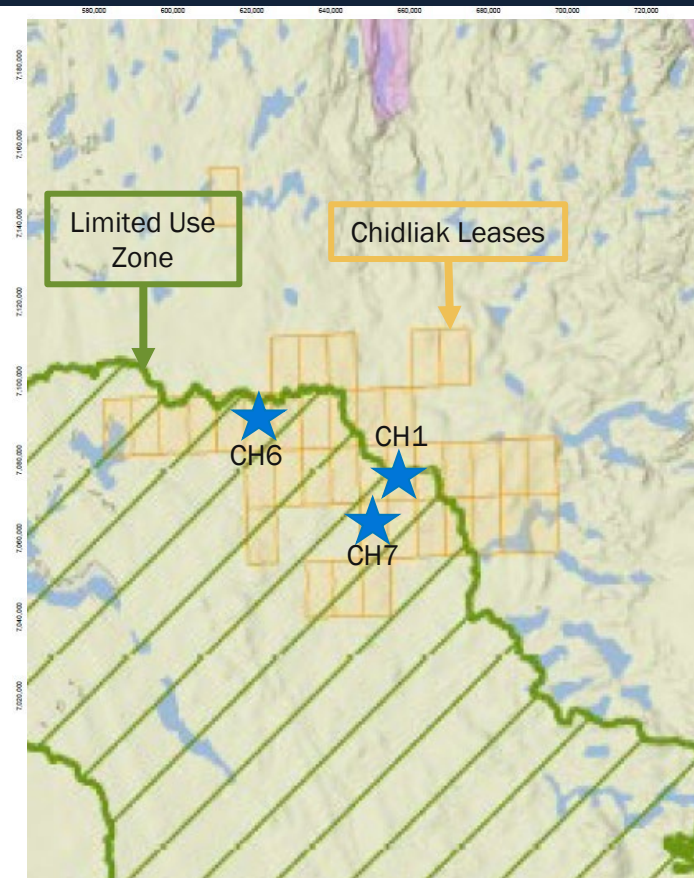
2.2.1-1 ጋጋ። ወኪልነቱን ወዲህ ማስተር ይደረግበት
A የሆኑ ነገሮች በጋጋው ስር ብቻ ሊጠቀሙ ሊያስፈልጉት ይችላሉ፡

- ፕሮጀክቲቭ ስኬት ማሳሰቢያ ላይ
- ፕሮጀክት ማሳሰቢያ ላይ;
- ፕሮጀክት ማሳሰቢያ;
- ፕሮጀክት ማሳሰቢያ ላይ;
- ፕሮጀክት ማሳሰቢያ ላይ 15 m ፕሮጀክት ማሳሰቢያ ላይ
- ፕሮጀክት ማሳሰቢያ

[illegible]

[C^bd₂J ၵၵၵၵၵၵ A ၵၵၵ C^bd^bၵၵၵၵ ၵၵၵ 2 - ၵၵၵၵ # 25]

ወርሃው የሮሮታዊነት ምርመራ ለማድረግ የሚችል
 የሮሮታዊ ስራ ለማድረግ የሚችል ሰራተኛው
 ሰራተኛው ለማድረግ የሚችል ሰራተኛው ለማድረግ
 የሚችል ሰራተኛው ለማድረግ የሚችል ሰራተኛው
 ለማድረግ የሚችል ሰራተኛው ለማድረግ የሚችል



DE BEERS GROUP

THE CHIDLIAK PROJECT

ᐱᐅᐅᐅᐅᐅ ᐱᐅᐅᐅᐅᐅ

ABOUT DE BEERS GROUP DE BEERS GROUP ԴԻՍԵ



Venetia Mine – South Africa



Orapa Mine – Botswana



Seabed recovery - Namibia



Industrial diamonds - UK



Rough diamond sales



Retail



Gahcho Kué Mine - NWT



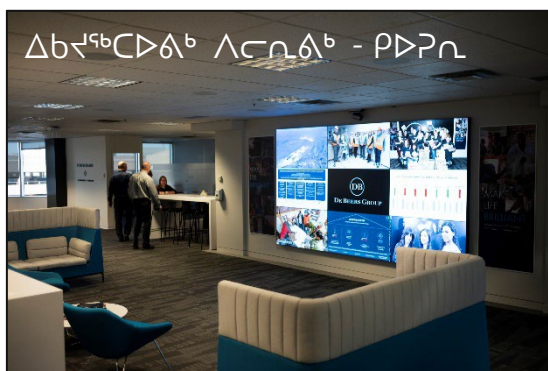
Exploration in Canada



Victor Mine closure - Ontario



Snap Lake closure - NWT



Support Centre - Calgary



Chidliak Project – Baffin Island

DE BEERS CANADA

Office, Operations, and Chidliak Project



Protecting the Natural
World



ካህናታና ሙከራ

Partnering for Thriving
Communities



ለሥራናገብናና
ከሥራናገብናና
ሙከራ

Accelerating Equal
Opportunity

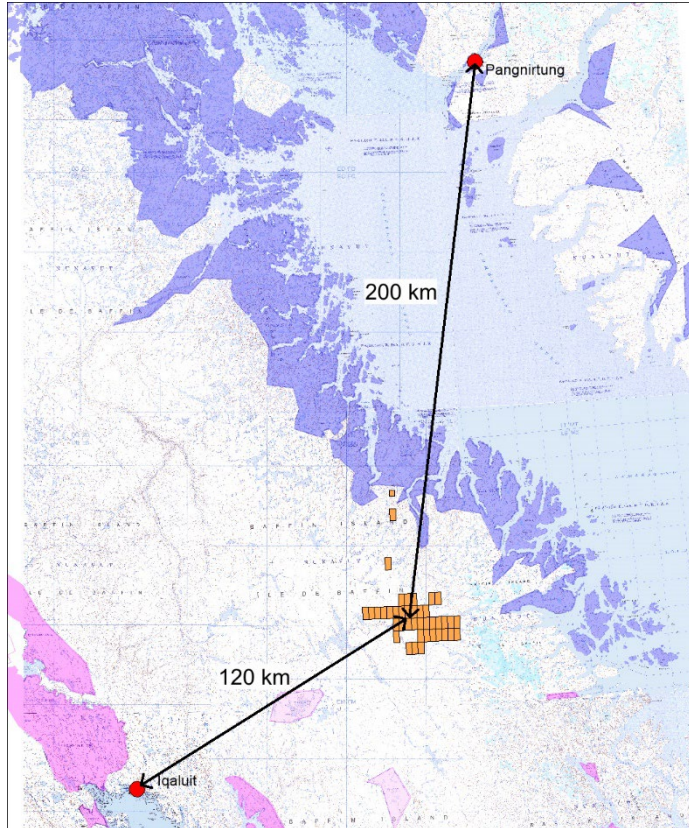


ለሥራናገብናና
ከሥራናገብናና
ሙከራ

Leading Ethical Practices
Across Industry



ለሥራናገብናና ሙከራ
ከሥራናገብናና
ሙከራ



Project Location

- 200 kilometers south of Pangnirtung (pop. 1481)
- 120 kilometers northeast of Iqaluit (pop. 7,740)

Access

- Air (helicopter & fixed wing)
- Winter Trail (seasonal, tracked vehicles)

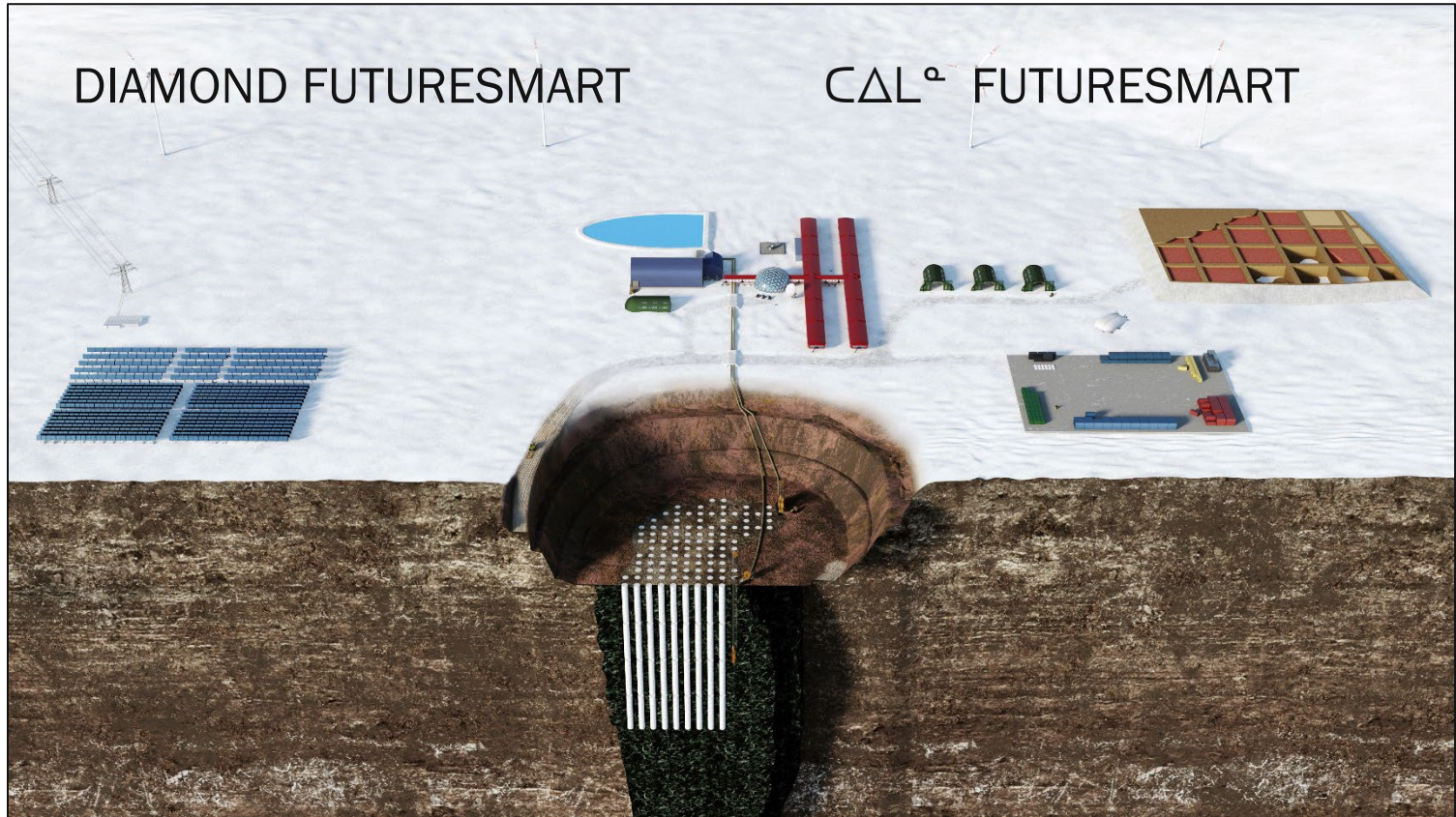
ΛσπΔ⁺ αΓ⁺σ⁺π

- 200 P_CF₂CF₃ ማጥፋት ጀምሮ ነበር (አዎንታዊ የውጭ አካባቢ ተጽእኖ 1481)
- 120 P_CF₂CF₃ በተለየ የውስጥ አካባቢ ውስጥ
 ስለተጠጠሩ (አዎንታዊ የውጭ አካባቢ ተጽእኖ 7,740)

Δημόσιος Σχολικός

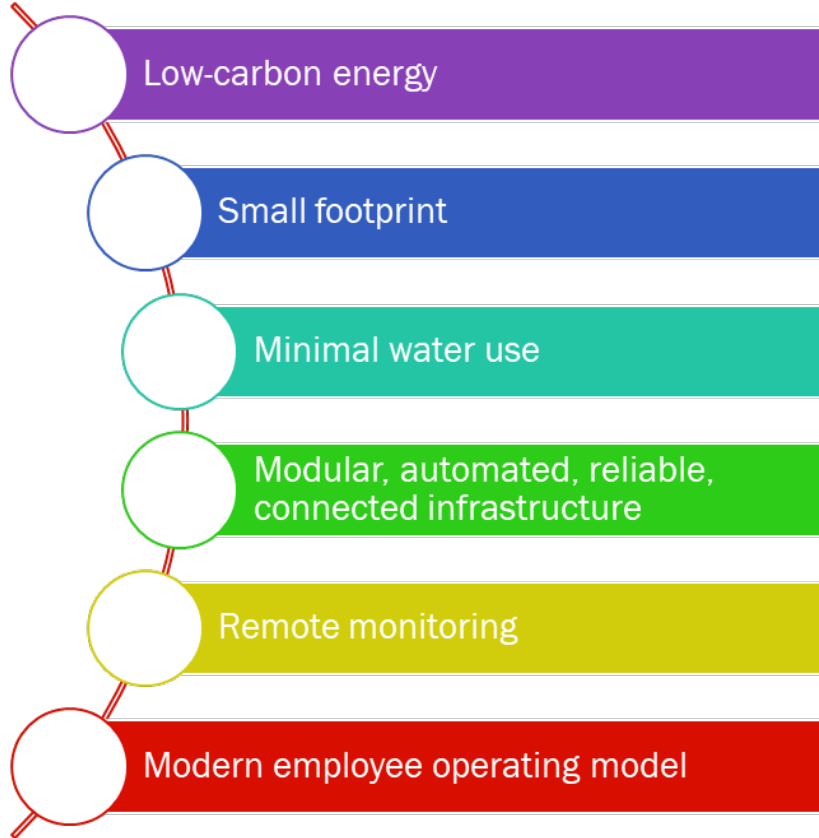
- ኤሌሚንቲ (ኖርጋኒክ ልዩላዊት)
- ምዕራባዊ ልዩላዊት (ኖርጋኒክ ልዩላዊት)

A NEW WAY TO RECOVER DIAMONDS



FUTURE SMART PRINCIPLES

FUTURESMART ▷◁Λη↳▷↵σ^c

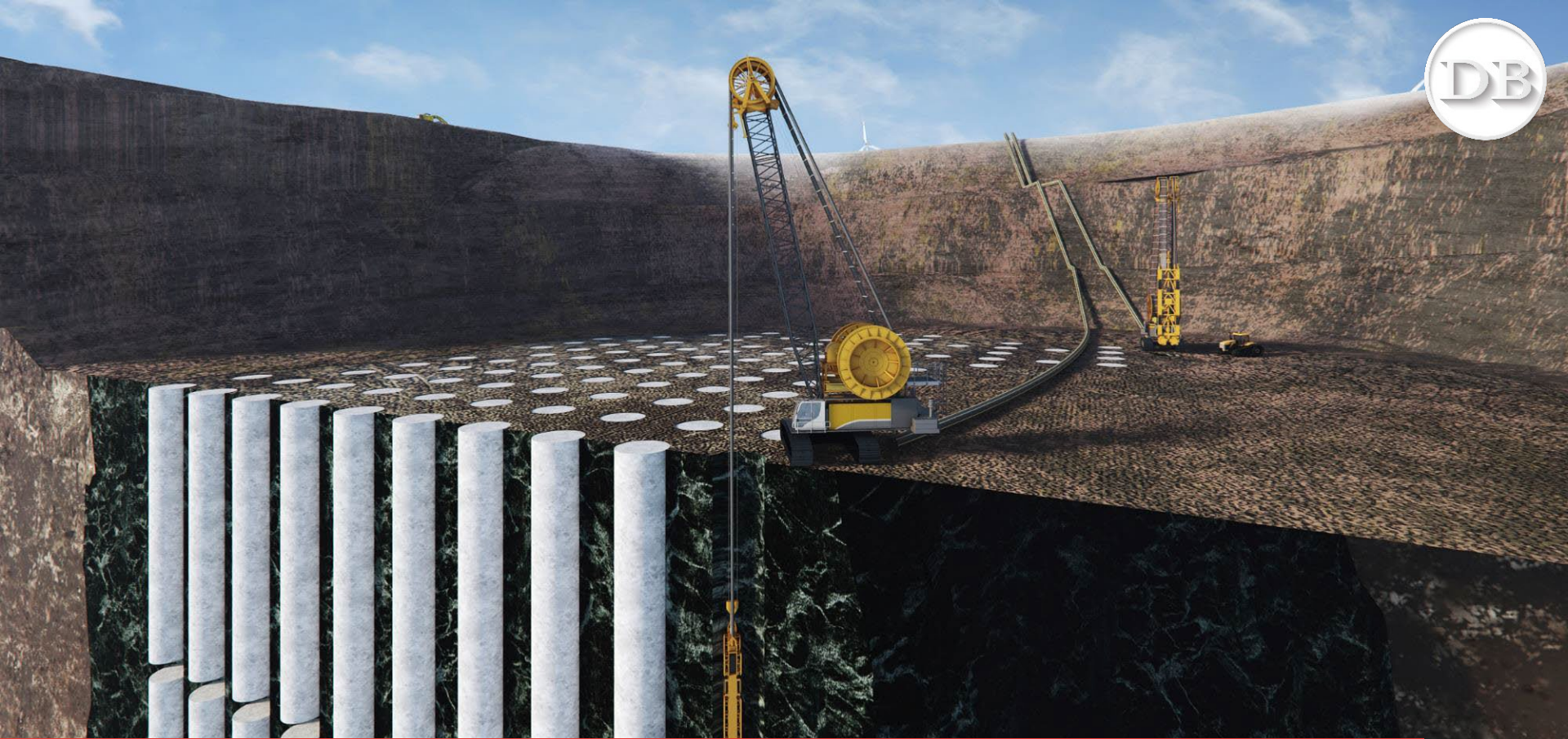




CONCEPTUAL DESIGN ልብረኒጋሪጊጋግ ነዳሪጋግ



UNDERGROUND MINING OPTION ወደ ልዩ ስራ ምዕራፍ ለመሰራት



VERTICAL MINING OPTION ᐱᓕᓕᓐᓂᓐ ᐅᓕᓐᓂᓐᓂᓐ ᐱᓕᓐᓂᓐ



MODULAR PROCESSING PLANT ᐃᑕᑦᑎᐅᑭᐅᑦᑎᐅᑦ ᐱᑦᑕᑦᑎᐅᑭᑦᑎᐅᑦ ᐅᑦᑎᐅᑦᑎᐅᑦ



ENERGY & LOGISTICS ႁႁႃႈႁူဝ်ႈ ၵႁႃႈ ၵႁႃႈႁူဝ်ႈ



CONNECTIVITY AND EMPLOYMENT $\Delta C_{\text{Network}}$ $\Delta C_{\text{Employment}}$

DE BEERS GROUP

RECOMMENDATIONS



CARIBOU INHABIT THE HALL PENINSULA

ᑕᑦᑕᑦᑕᑦ ᑕᑦᑕᑦᑕᑦᑕᑦᑕᑦᑕᑦ ᑕᑦᑕᑦᑕᑦ



CWC1907



[illegible]

DB



CWC1935

RECONYX

ALTERNATIVE DESIGNATION - OPTION 4 VALUED ECOSYSTEM COMPONENT



An alternative mechanism in the dNLUP is to establish a Value Ecosystem Component (VEC) designation to the area – Option 4.

This approach would have the following advantages:

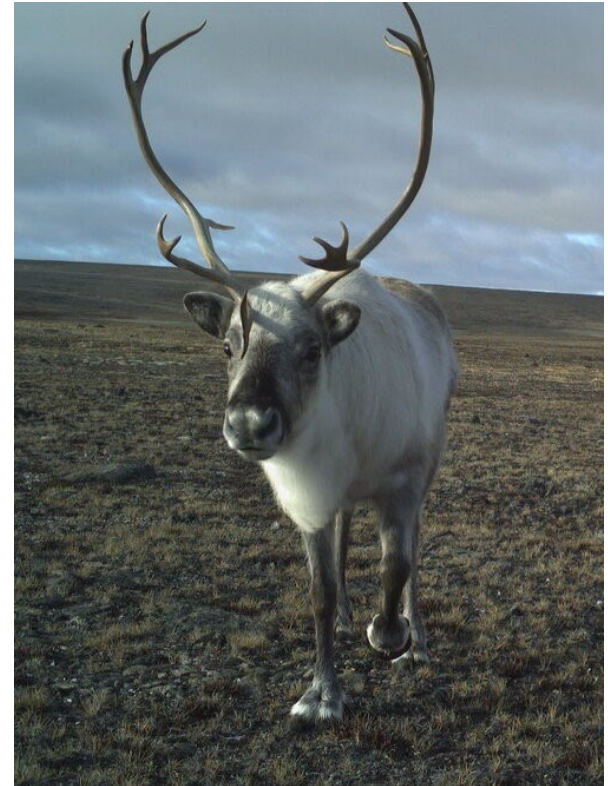
- Prioritize caribou calving and post-calving protection
- Enable Project-specific considerations by Inuit and regulators
- Encourage adaptive management
- Require temporal and/or spatial protection measures

De Beers is committed to caribou conservation and understands the need to put protective measures in place to protect caribou, particularly at sensitive times of the year such as calving and post-calving.

De Beers is committed to:

- Developing caribou protection measures together with Inuit and Scientists
- Helping to maintain and recover caribou populations in Nunavut
- Addressing data gaps in knowledge regarding caribou on southern Baffin Island

De Beers believes we can build the Chidliak Diamond Mine in such a way as to remain compatible with caribou protection and conservation



[illegible]

- De Beers purchased Peregrine Diamonds for the sole purpose of developing the Chidliak Project
- The dNLUP designates the Chidliak Project area as a Limited Use Zone - putting the Project at risk
- De Beers recommends that the dNLUP adopt a more agile approach to protecting caribou and other values, such as the Option 4- VEC designation. This would enable a full consideration of the Project by regulators and Inuit organizations while still ensuring that caribou are prioritized in all decision making
- De Beers is committed to partnering with other knowledge holders to address information gaps and contribute to caribou conservation
- If allowed the opportunity, Chidliak will be designed, constructed, and operated as a Future Smart Mine, incorporating Inuit values at all stages

- 26

Thank you ၎်းသိင်္ခဝါး

