



Presentation from
Ghotelnene K'odtineh Dene
Sayisi Dene First Nation &
Northlands Denesuline First Nation

ᐃᐃ ᕐᑎᕐᕐ

ᐃᐃᐃᐃ ᐃ ᐃᐃᐃᐃ ᐃᐃᐃᐃ

ᕐᑎᐃ ᐃᐃᐃᐃ ᐃᐃᐃᐃ ᐃᐃᐃᐃ ᐃᐃᐃᐃ
ᐃᐃᐃᐃ ᐃᐃᐃᐃ



Nunavut Planning Commission

Public Hearing

2021 Draft Nunavut Land Use Plan

September 26 & 27, 2022
Thompson, Manitoba

ᐃᐃᐃᐃ ᐃᐃᐃᐃᐃᐃ ᐃᐃᐃᐃᐃᐃ

ᐃᐃᐃᐃ ᐃᐃᐃᐃᐃᐃ

2021 ᐃᐃᐃᐃᐃᐃ ᐃᐃᐃᐃ ᐃᐃᐃᐃᐃᐃᐃ ᐃᐃᐃᐃᐃᐃ

ᐃᐃᐃᐃ 26 ᐃᐃ 27, 2022 ᐃᐃᐃᐃ, ᐃᐃᐃᐃᐃᐃ

[illegible]

- ለጥፋቶች ጋር ጋር ጋር ጋር

ᐅᑦᓃᐅᑦᓂᑦ.

- ፌዴራል ሥልጣን 2.3-1 (መደብረግግጥ A #106)
- መደብረግግጥ ጠቅላይግግጥ 5.3.1-1 (መደብረግግጥ A #93)
- ጠቅላይግግጥ መደብረግግጥ 4.2.2 (መደብረግግጥ B2.5)
- ከፌዴራል ሥልጣን ጋር





Sayisi Dene First Nation
ᑭᓴᑭᑦ ᑎᓐᓂ ᐱᓕᓕᐱᓕ ᓄᓇᓂᓕ



Northlands Denesuline First Nation
ᓄᐱᓕᓴᓐ ᑎᓐᓂᓴᓕᓐ ᐱᓕᓕᐱᓕ ᓄᓇᓂᓕ



Background

- Section 35 rights throughout traditional territory in Nunavut, Manitoba, the Northwest Territories and Saskatchewan
- Working with Commission since at least 2009 to ensure land use plan facilitates resolution of *Samuel/Thorassie* litigation and meets interests of Ghotelnene K'odtineh Dene
- Pleased to see that vast majority of withdrawn lands (Order in Council PC 2019-576) have been designated as Mixed Use
- Additional comments and recommendations for the Commission's consideration

ΛΓΠΔ^αΖΥΛΖ^ς

- [illegible]



Ghotelnene K'odtineh Dene
ᑭᑎᑭᑦᑦ ᑭᑦᑎᑦᑎᑦ ᑎᑦᑎᑦ



Polar Bear Denning Areas

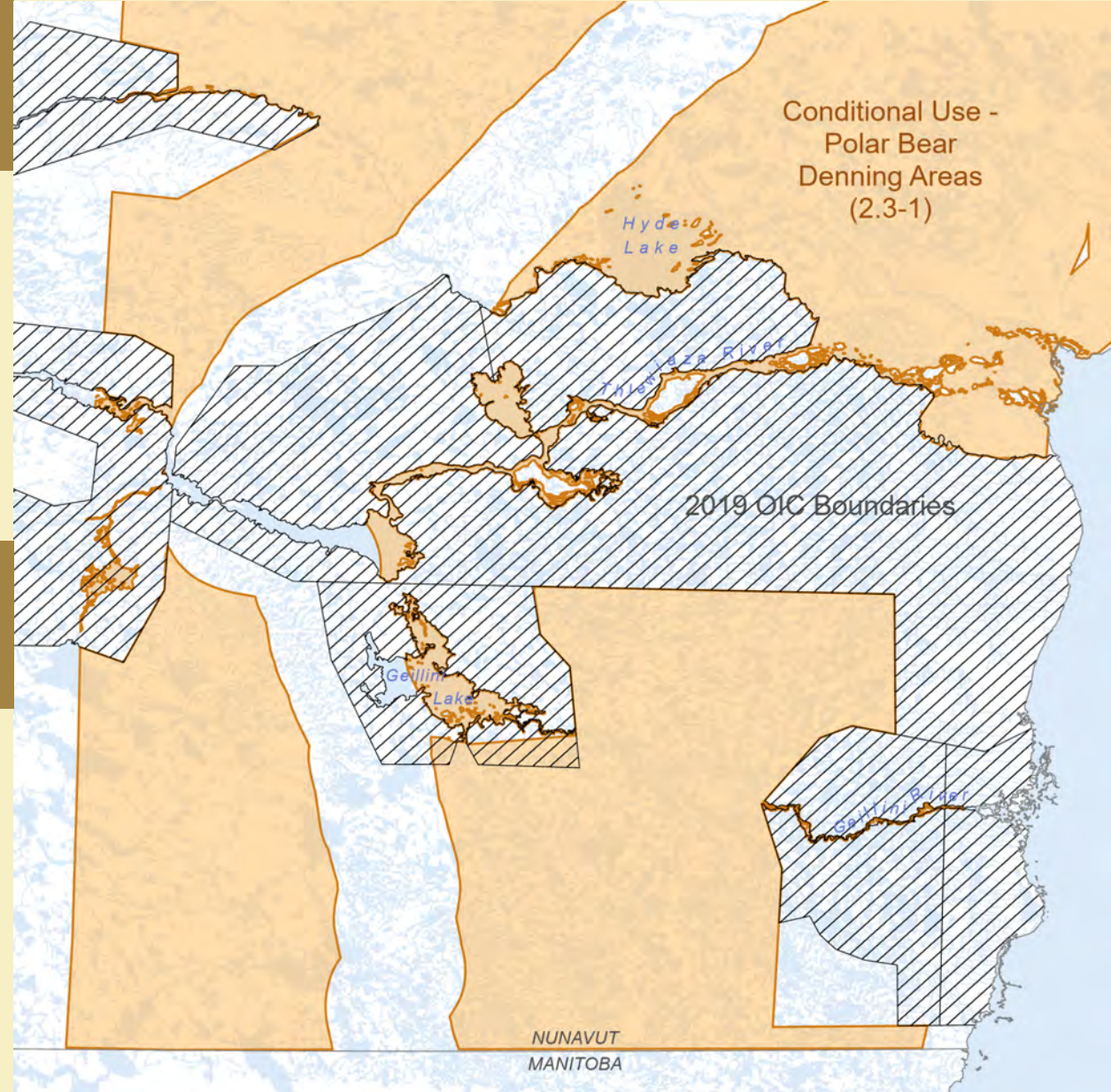
2.3-1 (Map A – Site #106)

- Extremely small areas where Conditional Use designation overlaps with lands subject to 2019 OIC, which are designated as Mixed Use
- May be further adjustments to final boundaries of lands subject to 2019 OIC

ᑭᑦᑭᑦᑭᑦ ᑭᑦᑭᑦᑭᑦ

2.3-1 (ᑭᑦᑭᑦᑭᑦ A - ᑭᑦᑭᑦ #106)

- ᑭᑦᑭᑦᑭᑦᑭᑦᑭᑦ ᑭᑦ ᑭᑦᑭᑦᑭᑦᑭᑦᑭᑦ ᑭᑦᑭᑦ ᑭᑦᑭᑦᑭᑦᑭᑦᑭᑦ ᑭᑦᑭᑦᑭᑦᑭᑦᑭᑦ ᑭᑦᑭᑦᑭᑦᑭᑦᑭᑦᑭᑦ 2019 ᑭᑦᑭᑦᑭᑦᑭᑦᑭᑦᑭᑦ ᑭᑦᑭᑦᑭᑦᑭᑦᑭᑦᑭᑦ ᑭᑦᑭᑦᑭᑦᑭᑦᑭᑦᑭᑦᑭᑦ
- ᑭᑦᑭᑦᑭᑦᑭᑦᑭᑦᑭᑦᑭᑦᑭᑦ ᑭᑦᑭᑦᑭᑦᑭᑦᑭᑦᑭᑦᑭᑦᑭᑦ ᑭᑦᑭᑦᑭᑦᑭᑦᑭᑦᑭᑦᑭᑦᑭᑦ 2019 ᑭᑦᑭᑦᑭᑦᑭᑦᑭᑦᑭᑦᑭᑦᑭᑦ



Ghotelnene K'odtineh Dene
ᑭᑦᑭᑦᑭᑦ ᑭᑦᑭᑦᑭᑦᑭᑦᑭᑦᑭᑦ



Polar Bear Denning Areas

2.3-1 (Map A – Site #106)

Recommendation

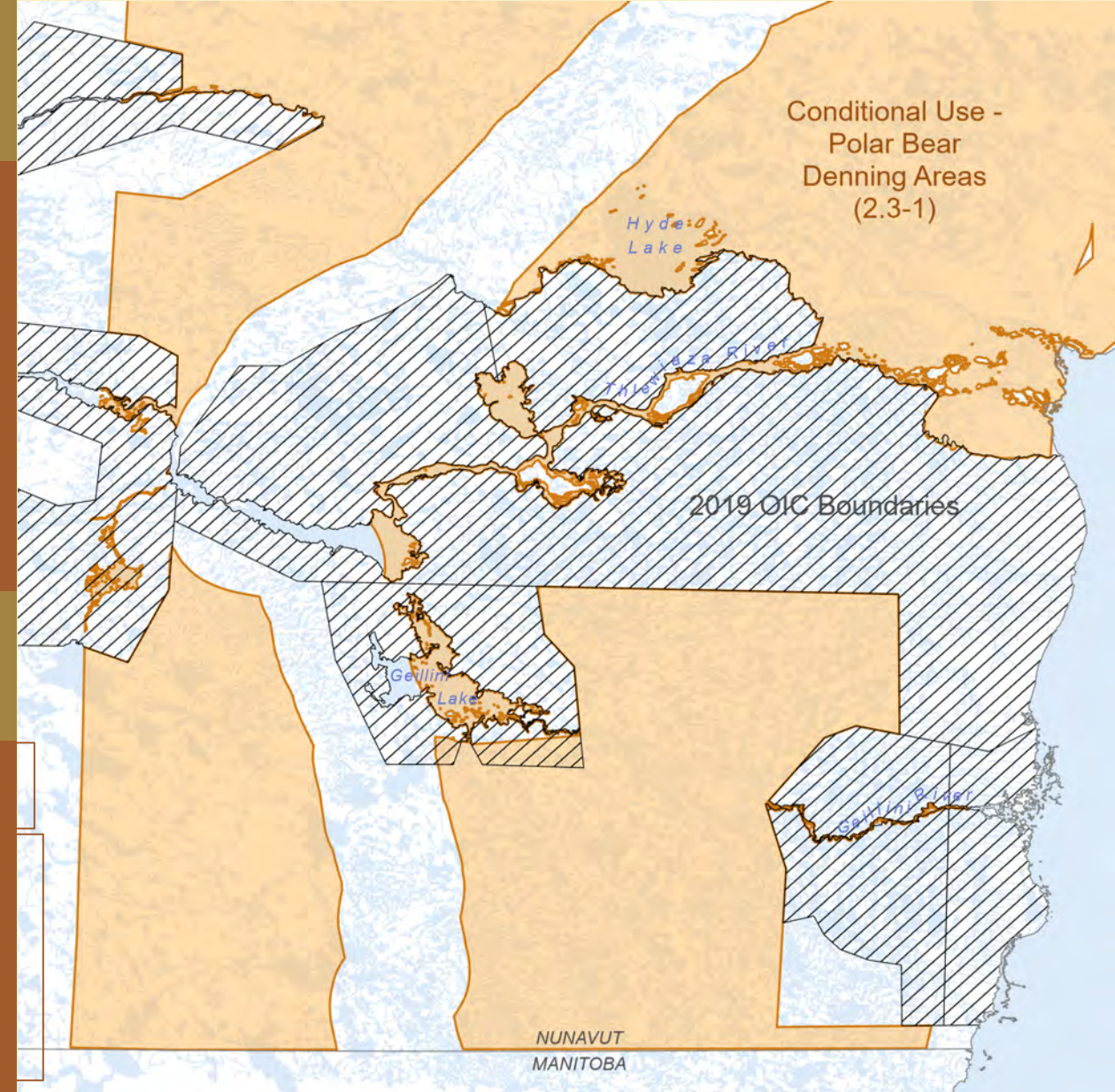
- The lands subject to the 2019 OIC should be excluded from Conditional Use designation
- Upon resolution of the *Samuel/Thorassie* litigation, boundaries of Conditional or Limited Use areas should be adjusted so that all lands subject to resolution of the *Samuel/Thorassie* litigation are designated as Mixed Use

ᑭᓄᓂᐱᑦ ᑭᓄᓂᐱᑦ

2.3-1 (ᓄᓄᓂᐱᑦ A - ᓄᓄ #106)

ᐱᓄᓂᐱᑦ

- ᓄᓄᑦ ᐱᓄᓂᐱᑦ 2019 ᐱᓄᓂᐱᑦ ᐱᓄᓂᐱᑦ
- ᐱᓄᓂᐱᑦ ᐱᓄᓂᐱᑦ ᐱᓄᓂᐱᑦ, ᐱᓄᓂᐱᑦ ᐱᓄᓂᐱᑦ ᐱᓄᓂᐱᑦ ᐱᓄᓂᐱᑦ ᐱᓄᓂᐱᑦ ᐱᓄᓂᐱᑦ ᐱᓄᓂᐱᑦ ᐱᓄᓂᐱᑦ



Ghotelnene K'odtineh Dene

ᑭᓄᓂᐱᑦ ᑭᓄᓂᐱᑦ

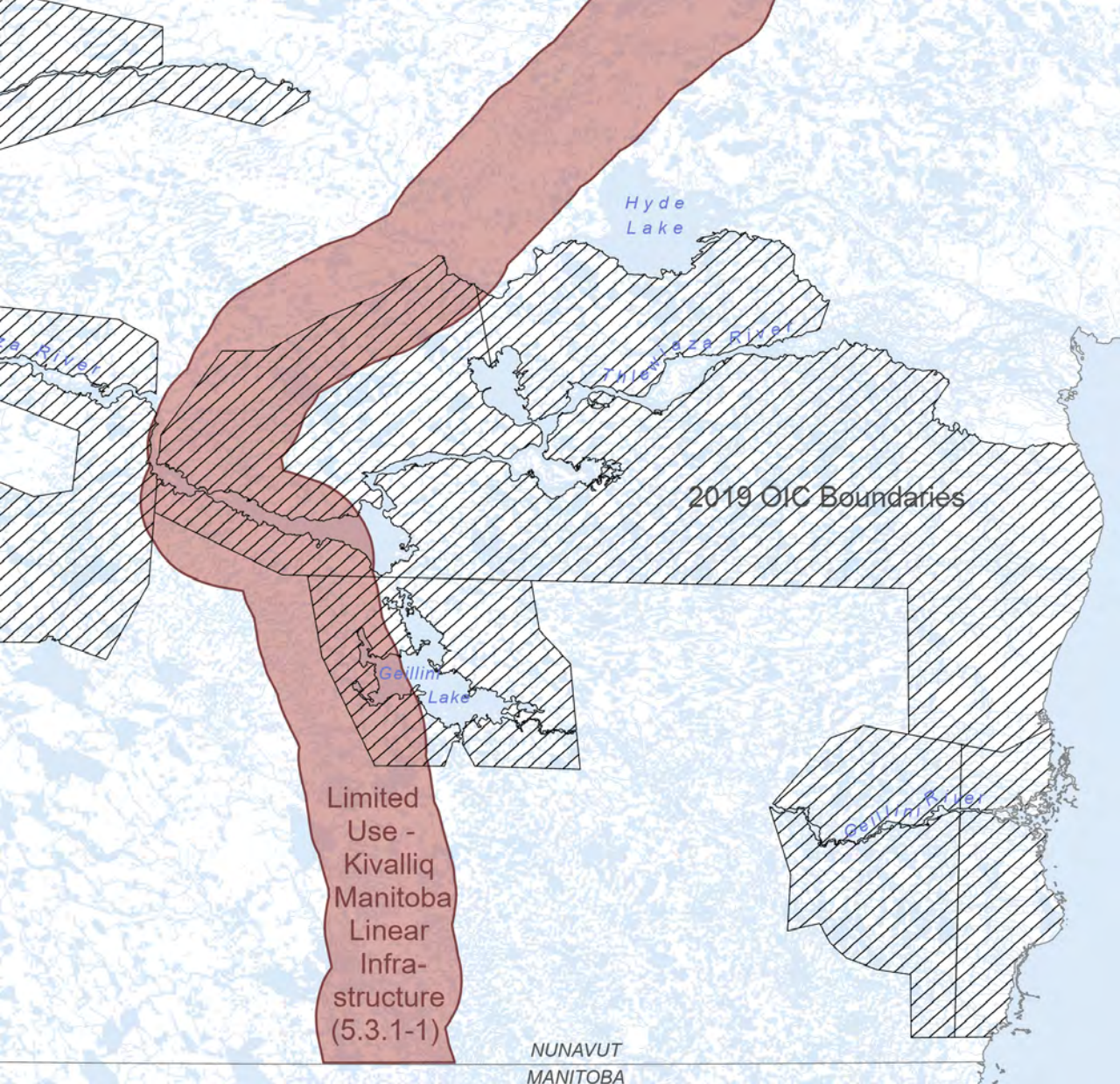


Terrestrial Linear Infrastructure 5.3.1-1 (Map A – Site #93)

- Portions of the lands subject to 2019 OIC overlap with areas identified in the Kivalliq-Manitoba infrastructure corridor and those portions are designated as Limited Use

ᓄᓇᓂᓄᓐ ᐃᓄᓕᐸᓐᓂᓄᓐ ᐱᓯᐱᓕᓂᓄᓐ 5.31-1 (ᓄᓇᓂᓄᓐ A =- ᓄᓇᓂᓄᓐ #93)

- ᐃᓕᓂᓐ ᓄᓇᓕ ᐃᓂᐸᓄᓂᓄᓐᓂᓄᓐ 2019 ᐱᓕᓂᓄᓐᓂᓄᓐ ᓄᓂᓄᓂᓄᓐᓂᓄᓐ ᓯᓇᓕᓂᓄᓐ ᐱᓂᓂᓄᓐᓂᓄᓐ ᓂᓄᓕᐸᓐᓂᓄᓐᓂᓄᓐ ᐱᓕᓂᓄᓐᓂᓄᓐ ᐸᓂᓄᓂᓄᓐᓂᓄᓐ



Ghotelnene K'odtineh Dene
ᓂᓄᓂᓄᓐ ᓯᓄᓂᓄᓐ ᓂᓄᓂᓄᓐ



Hyde Lake

Thelon River

Geillim Lake

2019 OIC Boundaries

Limited Use - Kivalliq Manitoba Linear Infrastructure (5.3.1-1)

NUNAVUT
MANITOBA

➤ **The lands subject to the 2019 OIC should be excluded from Limited Use designation for the Kivalliq-Manitoba infrastructure corridor**

[illegible]

- 2019 年 12 月 25 日
在 2019 年 12 月 25 日
在 2019 年 12 月 25 日
在 2019 年 12 月 25 日
在 2019 年 12 月 25 日

Terrestrial Linear Infrastructure

5.3.1-1 (Map A – Site #93)

- Any development with potential to adversely affect caribou is concerning
- Draft plan does not identify key caribou-related interests in the corridor that must be addressed by proponents and regulatory authorities

Recommendation

- **Plan should address important caribou-related interests within Kivalliq-Manitoba infrastructure corridor**
- **Further consideration to alternative routes to avoid key caribou interests, such as calving and post-calving areas**

በድርጅቱ ውስጥ ለሚገኙ ሰራተኞች
5.3.1-1 (ጠቅላይ ልማት ልማት #93)

- [illegible]

ᠠᠨᠤᠯᠦᠢᠰᠡᠭᠦᠷᠣᠪᠲᠤ

- [illegible]



Ghotelnene K'odtineh Dene
ᑭᑎᑭᑦᑎᑦ ᑭᑦᑎᑦᑎᑦ ᑎᑦᑎᑦ



Dönesuġliné Areas 4.2.2 (Map B2.5)

- Requires proponents to identify impacts to Dënesųłiné Areas as a Valued Socio-Economic Component raises awareness of Dënesųłiné rights and interests and leads to greater inclusion
- Regulatory authorities encouraged to consider Dënesųłiné Areas as a VSEC when reviewing projects

በፍጥነት ማሻሻያ
4.2.2 (ጥቅምት B2.5)

- [illegible]



Ghotelnene K'odtineh Dene
ᑭᑭᑦᑎᑦᑎᑦ ᑭᑦᑭᑦᑎᑦ ᑭᑦᑎᑦᑎᑦ



A map of northern Saskatchewan and Manitoba, Canada, showing the Dene Nation's asserted title claim area. The claim area is shaded in brown and labeled "Denesųliné Areas of Asserted Title Claim". Surrounding regions are labeled: "Nunavut" to the north, "Northwest Territories" to the west, "Saskatchewan" to the southwest, and "Manitoba" to the south. "Hudson Bay" is shown to the east. The map includes geographical features like rivers and lakes, and the provincial/territorial boundaries are clearly marked.

- በፍጥነት ማረጋገጫ
4.2.2 (ጥንቃቄ B2.5)

- [illegible]



Ghotelnene K'odtineh Dene
ᑭᑎᑭᑦᑎᑦ ᑭᑦᑎᑦᑎᑦ ᑦᑎᑦ



Dënesųłiné Areas

4.2.2 (Map B2.5)

- Area of asserted rights in Nunavut is set out in Map
- Until the *Samuel/Thorassie* litigation is resolved, Ghotelnene K'odtineh Dene's asserted rights and interests should be used in land use planning

ᑎᓂᓐᓯᓚᓐ ᓄᓇᓐᓂᑎᓐᓯᓚᓐ

4.2.2 (ᓄᓇᓐᓂᑎᓐᓯᓚᓐ B2.5)

- ᓄᓇᓐ ᐱᓕᓐᓄᓂᑎᓐᓯᓚᓐᓂᓐ ᓄᓇᓂᓐᓯᓚᓐ ᑎᑎᓴᓐᓯᓚᓐᓂᓐ ᓄᓇᓐᓂᑎᓐᓯᓚᓐ ᓯᓯᓂᓐ ᓴᓐᓂᓐ ᓂᓴᓴᓐ ᓂᓴᓴᓐᓂᓐᓯᓚᓐ
- ᓂᑎᓂᓐᓂᓐ ᓯᓐ ᓂᓂᓐᓂᓐ ᐱᓕᓐᓄᓂᑎᓐᓯᓚᓐᓂᓐ ᐱᓕᓴᓴᓐᓂᓐ ᓂᓴᓴᓐᓂᓐᓯᓚᓐᓂᓐ ᓄᓇᓂᓐ ᓂᓴᓴᓐᓂᓐᓯᓚᓐ ᓂᓴᓴᓐᓂᓐᓯᓚᓐ



Ghotelnene K'odtineh Dene
ᓂᑎᓂᓐᓂᓐ ᓯᓐ ᓂᓂᓐᓂᓐ ᐱᓕᓐᓄᓂᑎᓐᓯᓚᓐ



4.2.2 (Map B2.5)

- A “Ghotelnene K’odtineh Dene Area” should be included as a VSEC and the nature and extent of asserted rights and interests should be described
- Upon resolution of *Samuel/Thorassie* litigation, plan should incorporate description of Ghotelnene K’odtineh Dene rights and interests set out in final agreement
- Regulatory authorities should be required to consider the Ghotelnene K’odtineh Dene Area as a VSEC when reviewing projects

4.2.2. (၂၀၁၅ ခုနှစ် B2.5)

[illegible]

Ghotelnene K'odtineh Dene
ᑭᑭᑦᑎᑦᑎᑦᑎᑦ ᑭᑦᑭᑦᑎᑦᑎᑦ ᑭᑦᑎᑦᑎᑦᑎᑦ



Dënesųłiné Areas

4.2.2 (Map B2.5)

Recommendation

In text of Section 4.2.2:

- References to “Manitoba Dënesųłiné” should be replace with “Ghotelnene K’odtineh Dene”
- Text should be revised to clarify that the lands subject to the 2019 OIC have not yet been surveyed

ᑎᑎᓂᓐᓕᓚᓐ ᓄᓇᓐᓂᑎᓐᓕ 4.2.2 (ᓄᓇᓐᓂᑎᓐᓕ B2.5)

ᐱᑎᓂᓐᓕᓚᓐ ᓄᓇᓐᓂᑎᓐᓕ

ᑎᑎᓂᓐᓕᓚᓐ ᓄᓇᓐᓂᑎᓐᓕ 4.2.2:

- ᑎᓂᓐᓕᓚᓐ “ᐱᓂᓐᓕᓚᓐ ᑎᓂᓐᓕᓚᓐ” ᓄᓇᓐᓂᑎᓐᓕ ᐱᓂᓐᓕᓚᓐ “
- ᑎᑎᓂᓐᓕᓚᓐ ᐱᓂᓐᓕᓚᓐ ᑎᓂᓐᓕᓚᓐ ᓄᓇᓐᓂᑎᓐᓕ 2019 ᐱᓂᓐᓕᓚᓐ ᓂᓂᓐᓕᓚᓐ ᓂᓂᓐᓕᓚᓐ ᓂᓂᓐᓕᓚᓐ



Ghotelnene K’odtineh Dene
ᑎᓂᓐᓕᓚᓐ ᐱᓂᓐᓕᓚᓐ ᑎᓂᓐᓕᓚᓐ



Crown Consultations

- Canada purports to rely, in part, on Commission's processes to discharge the Crown's duty to consult with Ghotelnene K'odtineh Dene
- Unclear how the Crown's duty to consult merges with the Commission's process at the plan development, approval and implementation stages

Recommendation

- **The Commission, Crown and Section 35 rightsholders should engage in discussions to clarify how the Crown's duty to consult will be merged with the Commission's processes**
- **The outcome of these discussions should be incorporated into the plan**

ბეცად^ს კიბლნი^ს შ^ს

- [illegible]

ᐃᑦᓴᓂᐅᓄᓇᓂᐅᓄᓇ

- [illegible]



Ghotelnene K'odtineh Dene
ᑭᑎᑭᑦᑎᑦ ᑭᑦᑎᑦᑎᑦ ᑎᑦᑎᑦ



