

ከጋራ ጋር ጋራ ጋራ ጋራ
 ጋራ ጋራ ጋራ ጋራ ጋራ
 (DNLUP)

Δ^αβ^βΨΠΔ^α, $\mu\omega^c$ (ΔΓΔ^αΔ^αΔ^α 12-15, 2022)

ବିଏଫ୍‌ସିଆଇଆର୍, ଯୁଗ୍ମ (ୱାଶିଂଟନ୍‌ 19-23, 2022)

ᠴᠢᠵᠤ ᠯᠦᠰᠡᠭ (᠘᠒᠑᠕ᠶ᠋ᠸᠠᠨ) 26-27, 2022)





1. የግብርና

- ለግብርና
- ምርትና ምርት ለግብርና
- ለግብርና ምርት



2. የግብርና ምርት ለግብርና (DNLUP) የግብርና

- ለግብርና ምርት ለግብርና ምርት ለግብርና
- ለግብርና ምርት ለግብርና ምርት ለግብርና
- ለግብርና ምርት ለግብርና ምርት ለግብርና



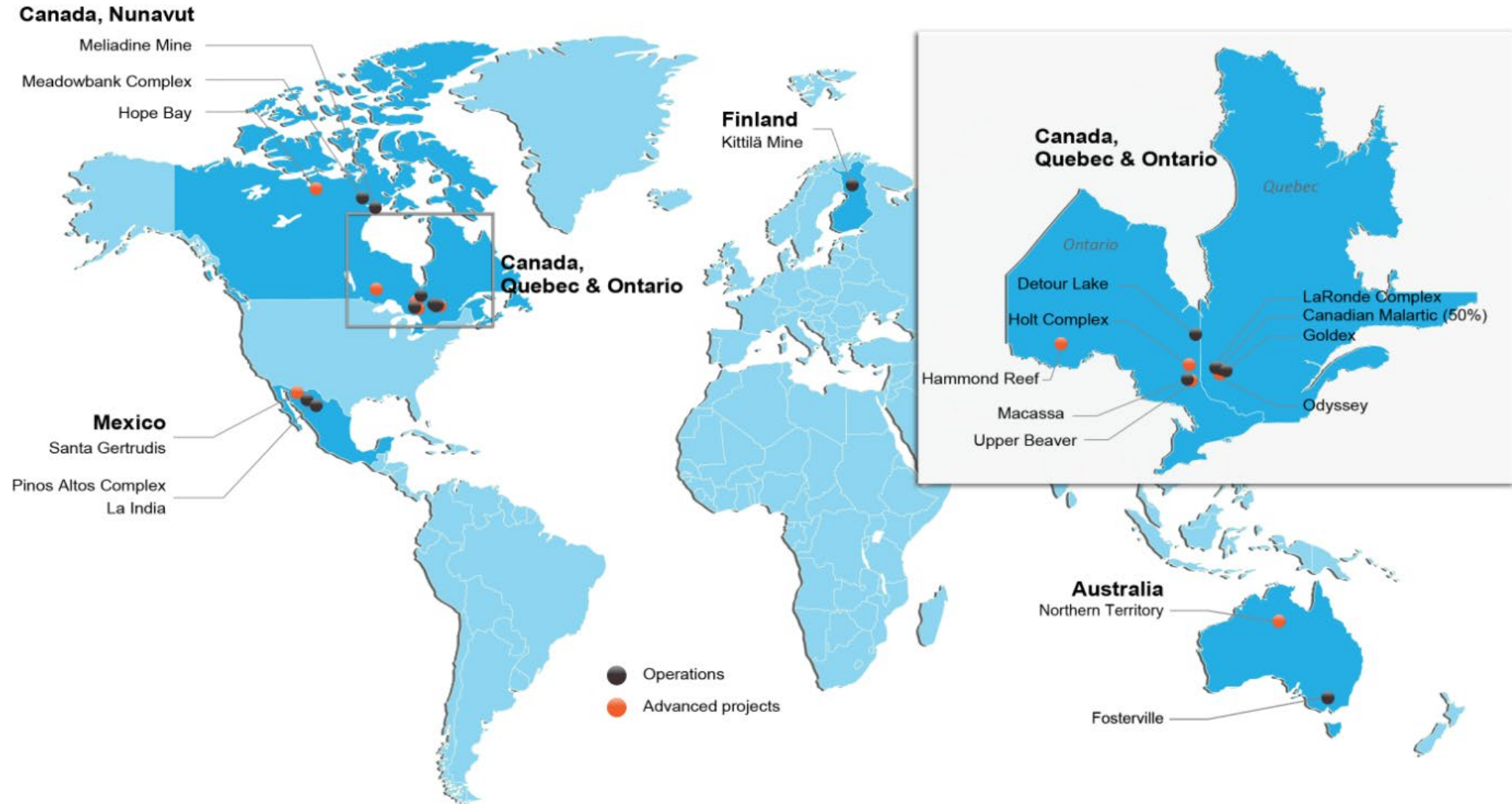
3. የግብርና

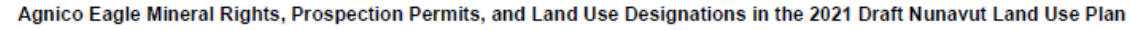
- የግብርና ምርት ለግብርና ምርት ለግብርና



የጋራ

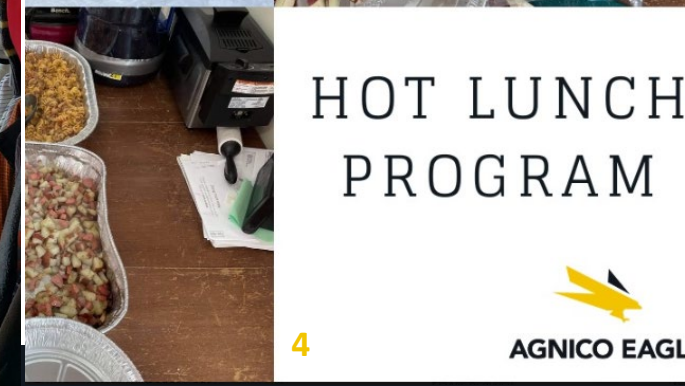






ᐅᑦᑕᑦᑕᑦᑕ ᐱᑦᑕᑦᑕ ᐅᑦᑕᑦᑕ ᐅᑦᑕᑦᑕ

- ᐅᑦᑕᑦᑕ 25%-ᑕᑦ GDP-ᑕᑦ ᐅᑦᑕᑦᑕ.
- ᐱᑦᑕᑦᑕ ᐅᑦᑕᑦᑕ ᐱᑦᑕᑦᑕ ᐱᑦᑕᑦᑕ ᐱᑦᑕᑦᑕ ᐱᑦᑕᑦᑕ.
- ᐱᑦᑕᑦᑕ 2007-ᑕᑦ
 - ᐱᑦᑕᑦᑕ ᐅᑦᑕᑦᑕ ᐅᑦᑕᑦᑕ \$7 ᐱᑦᑕᑦᑕ ᐅᑦᑕᑦᑕ
 - ᐱᑦᑕᑦᑕ ᐅᑦᑕᑦᑕ ᐅᑦᑕᑦᑕ \$109 ᐱᑦᑕᑦᑕ ᐅᑦᑕᑦᑕ ᐱᑦᑕᑦᑕ ᐱᑦᑕᑦᑕ ᐱᑦᑕᑦᑕ ᐱᑦᑕᑦᑕ ᐱᑦᑕᑦᑕ ᐱᑦᑕᑦᑕ ᐱᑦᑕᑦᑕ.
- ᐱᑦᑕᑦᑕ ᐱᑦᑕᑦᑕ ᐱᑦᑕᑦᑕ ᐱᑦᑕᑦᑕ ᐱᑦᑕᑦᑕ ᐱᑦᑕᑦᑕ ᐱᑦᑕᑦᑕ ᐱᑦᑕᑦᑕ ᐱᑦᑕᑦᑕ.



ᐱᑦᑕᑦᑕ 1 ᐱᑦᑕᑦᑕ 2: ᐱᑦᑕᑦᑕ ᐅᑦᑕᑦᑕ ᐅᑦᑕᑦᑕ (ᐱᑦᑕᑦᑕ)

ᐱᑦᑕᑦᑕ 3: ᐱᑦᑕᑦᑕ ᐅᑦᑕᑦᑕ ᐅᑦᑕᑦᑕ 2020-ᑕᑦ ᐱᑦᑕᑦᑕ ᐱᑦᑕᑦᑕ (ᐱᑦᑕᑦᑕ)

ᐱᑦᑕᑦᑕ 4: ᐱᑦᑕᑦᑕ ᐅᑦᑕᑦᑕ ᐱᑦᑕᑦᑕ ᐱᑦᑕᑦᑕ ᐱᑦᑕᑦᑕ ᐱᑦᑕᑦᑕ ᐱᑦᑕᑦᑕ ᐱᑦᑕᑦᑕ ᐱᑦᑕᑦᑕ ᐱᑦᑕᑦᑕ ᐱᑦᑕᑦᑕ.

HOT LUNCH PROGRAM





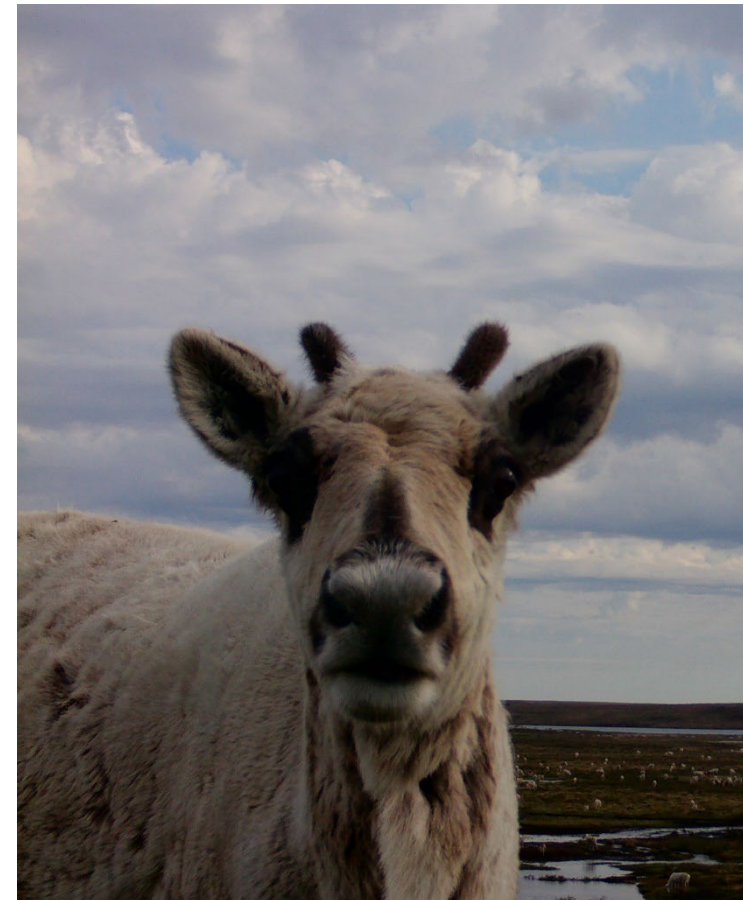
ለርኅመቴ ርልሊዎችህ ለሰላም ምክንያት ለሰላም ምክንያት
ወይም ለሰላም ምክንያት



- [illegible]



- [illegible]



- [illegible]

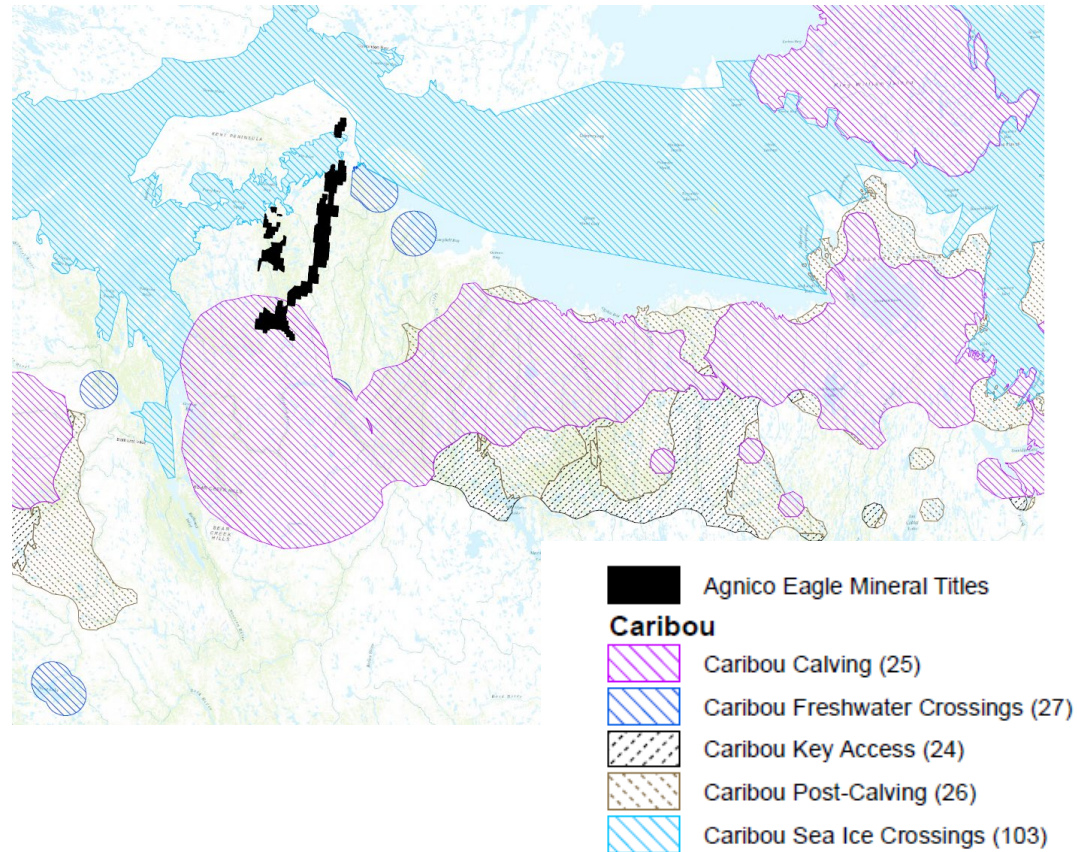




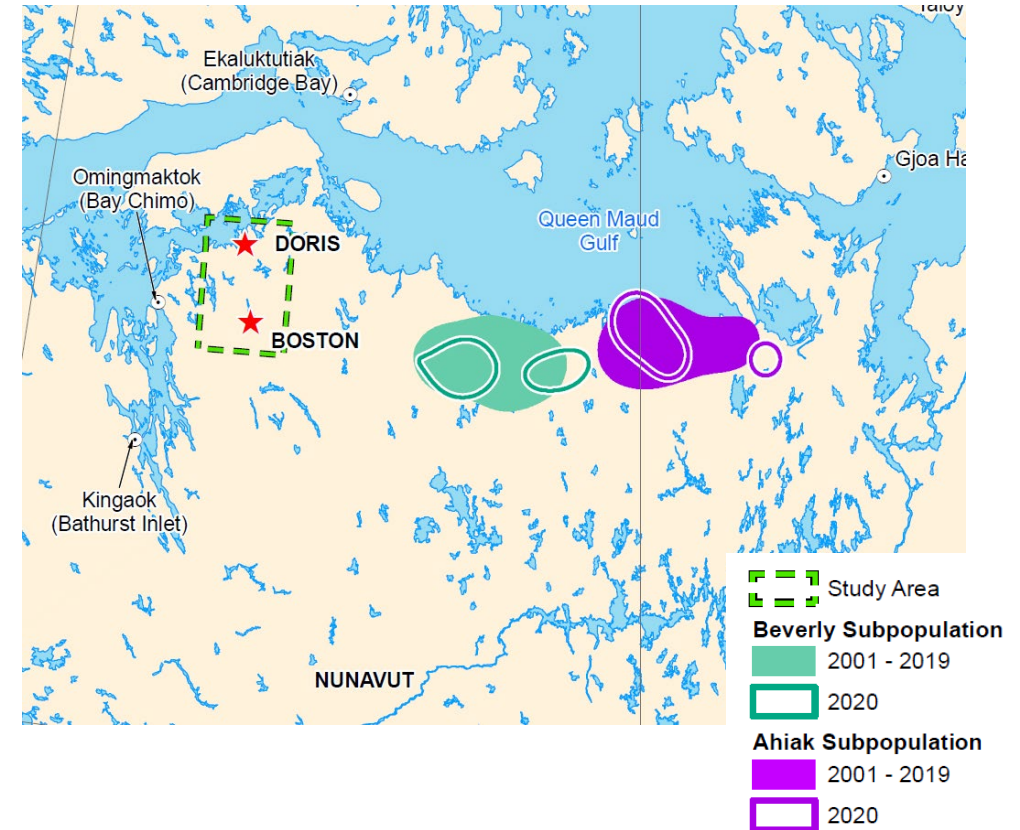
ኢኮኖሚክስ ልማት



- [illegible]

[illegible]

የፅሁፍ ጥያቄ ለመስጠት/መስጠት ለሚችል ሰው (ፅሁፍ ለመስጠት ለሚችል)

[illegible]

የፌዴራል ምርመራ/ጥናት/ጥናት/ጥናት/ጥናት (2001-ፍ
2020-ፍ)

- ᐱᓪᓂᐃᐅᑦ | 2021 DNLUP- Pᑕᑭᑦᑖᑦ ᑲᑎᒐᑎᑦᑎᓂᑦ



ᑭᓚᑦ ᐱᐳᓂᓂᑦ ᐱᓕᓂᑦ ᐱᓕᓂᑦ ᐱᓕᓂᑦ ᐱᓕᓂᑦ ᐱᓕᓂᑦ
ᐱᓕᓂᑦ ᐱᓕᓂᑦ



- [illegible]

-
- A photograph showing a worker in an orange safety vest and hard hat standing in a snowy field. A sign on a post next to him reads "WILDLIFE HAS THE RIGHT OF WAY". Another worker is visible in the background.

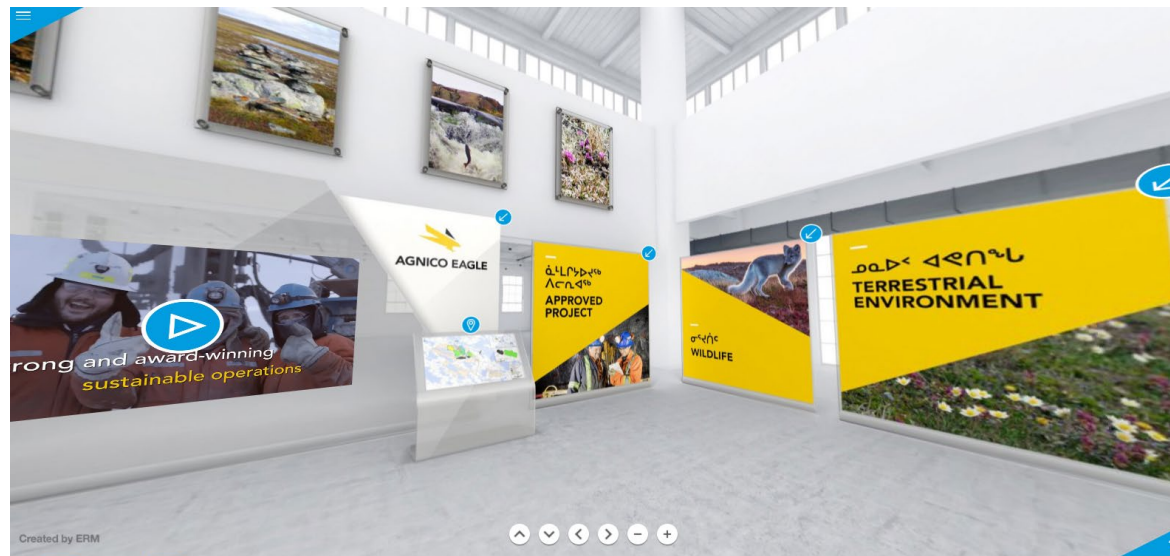
- [illegible]



- [illegible]



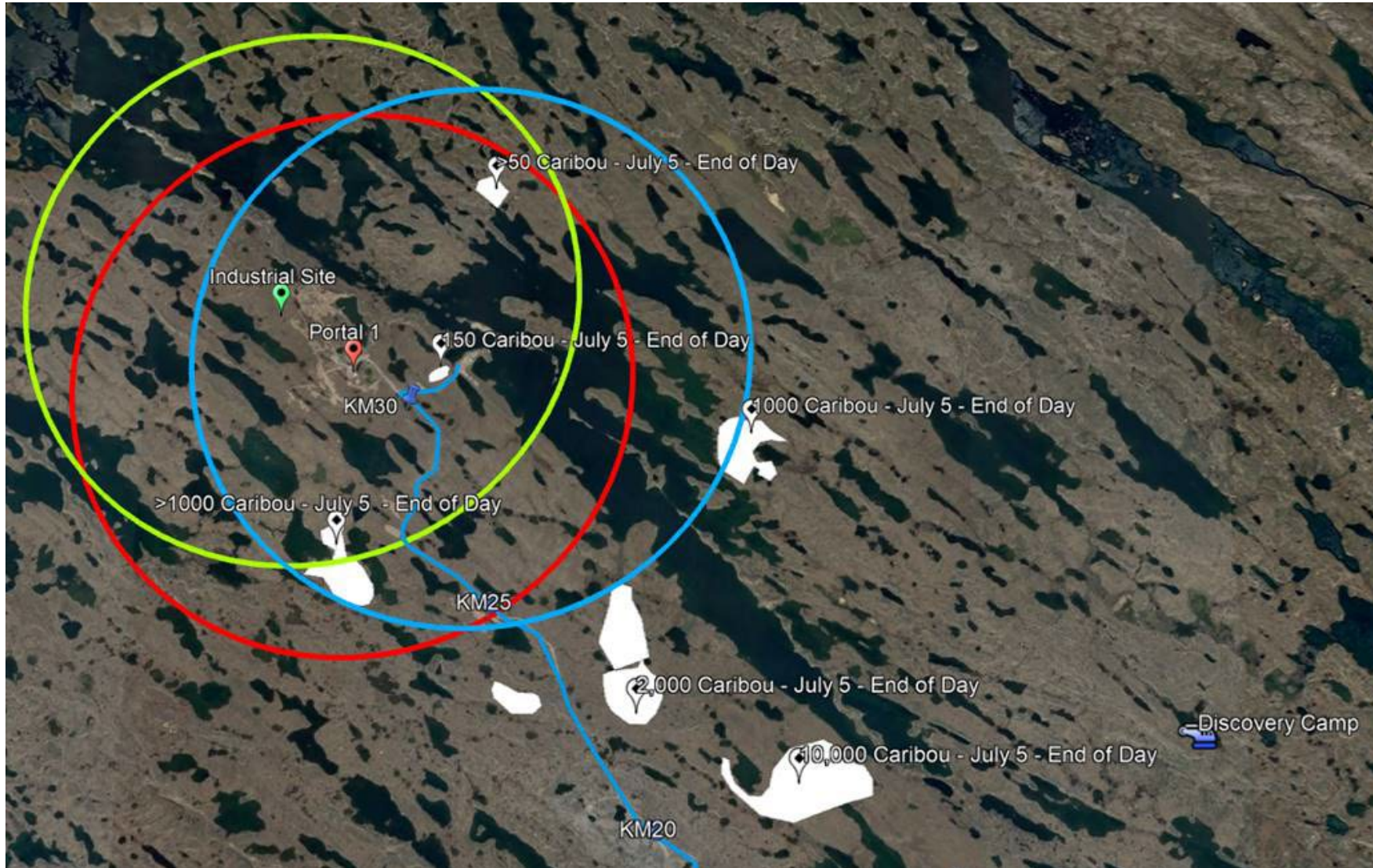
- [illegible]







ጋራ ጥቅም ማረጋገጥ ለጋራ ጥቅም ማድረግ.



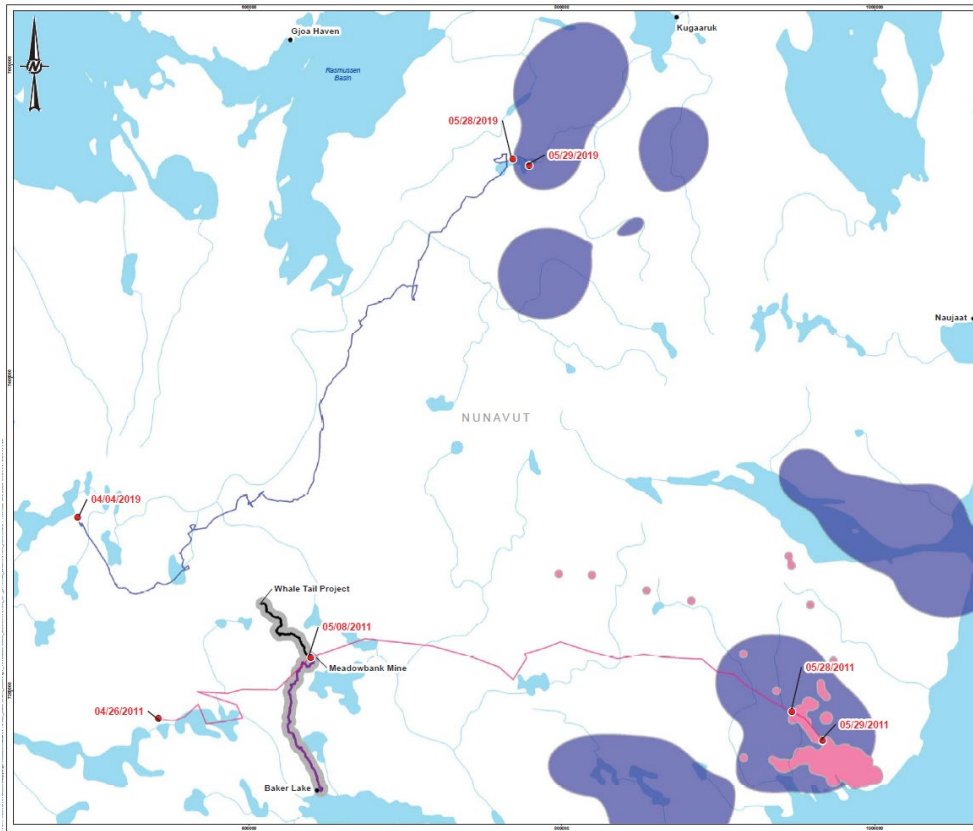
- [illegible]

50 $\triangleright^a \dot{\bar{C}} \dot{\bar{f}}^b < C \supset^b \supset \Delta^c$ 5 $\rho \dot{\bar{C}} \Gamma C \Delta^c \Delta \supset \triangleleft \sigma^c$, $\triangleright \dot{\bar{f}}^b C \dot{\bar{C}} \triangleleft^b$
 $\triangleright^b d \triangleleft^b C \triangleright \sigma \triangleleft^b \supset^b$.

- 2021-፲፫ - ልማትና ሥራ ልማት ሚኒስቴር ልማትና ሥራ ሚኒስቴር ልማትና ሥራ ሚኒስቴር.
- ልማትና ሥራ ልማት ሚኒስቴር ልማትና ሥራ ሚኒስቴር ልማትና ሥራ ሚኒስቴር.

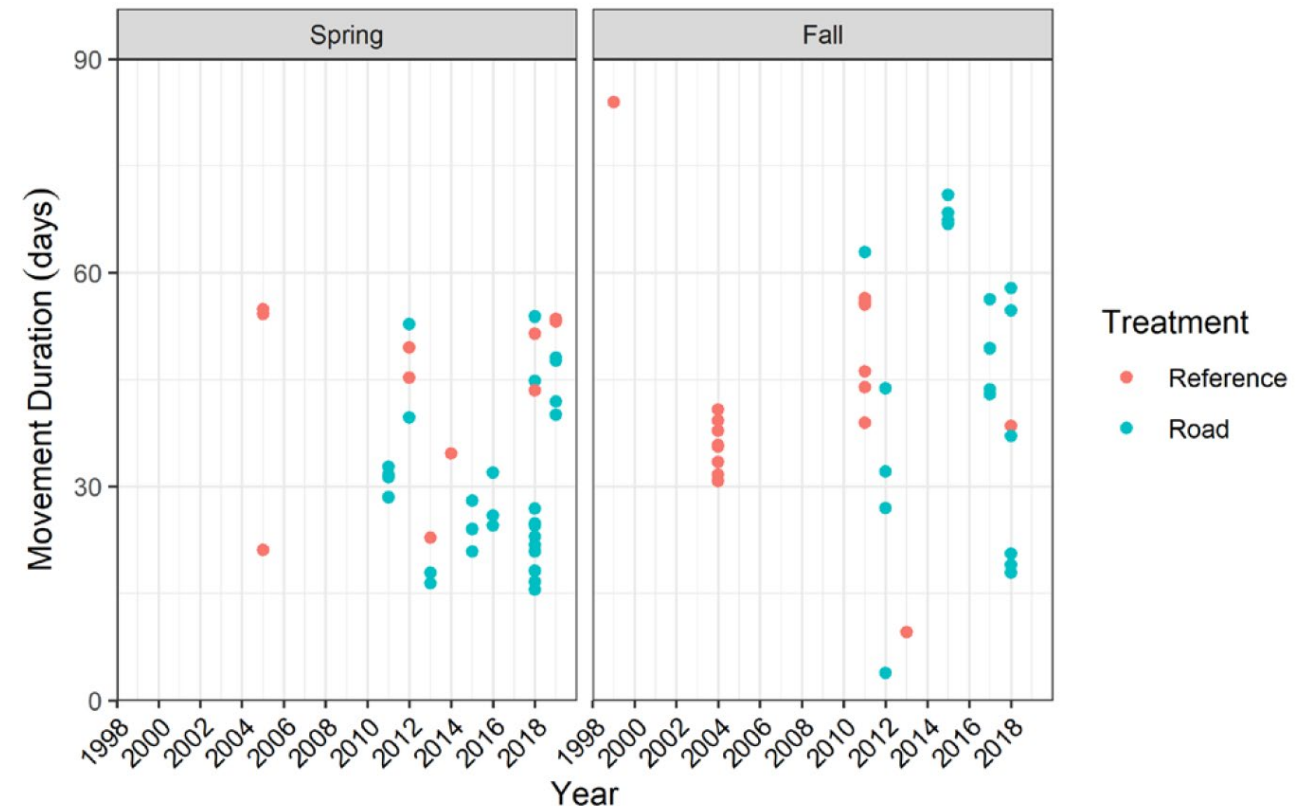
- [illegible]

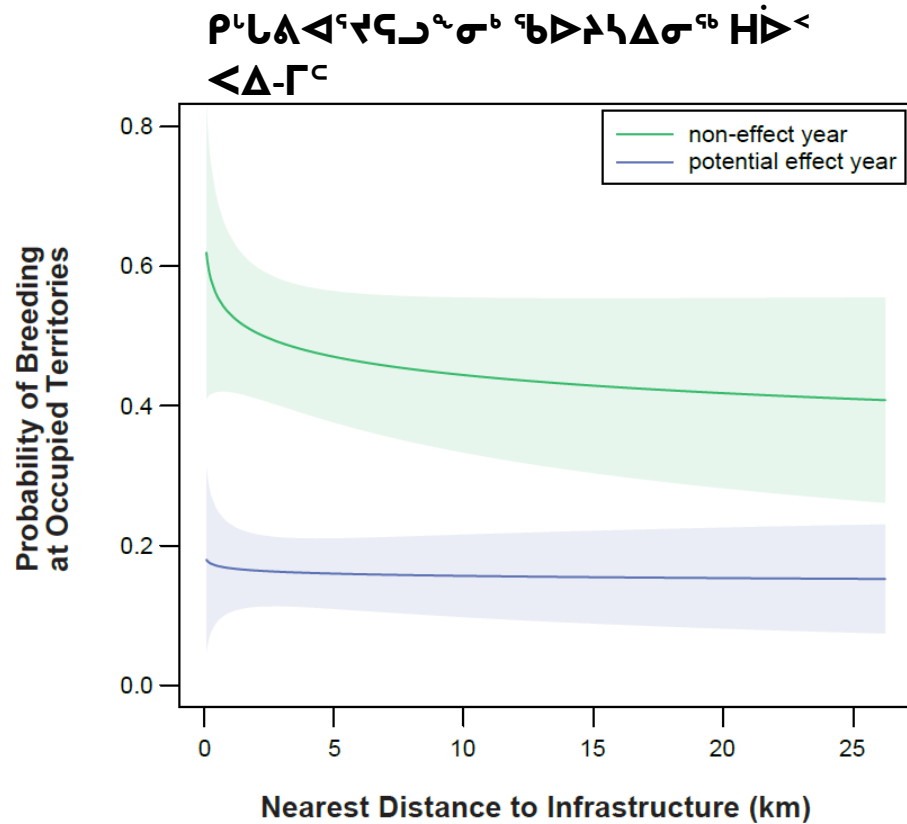




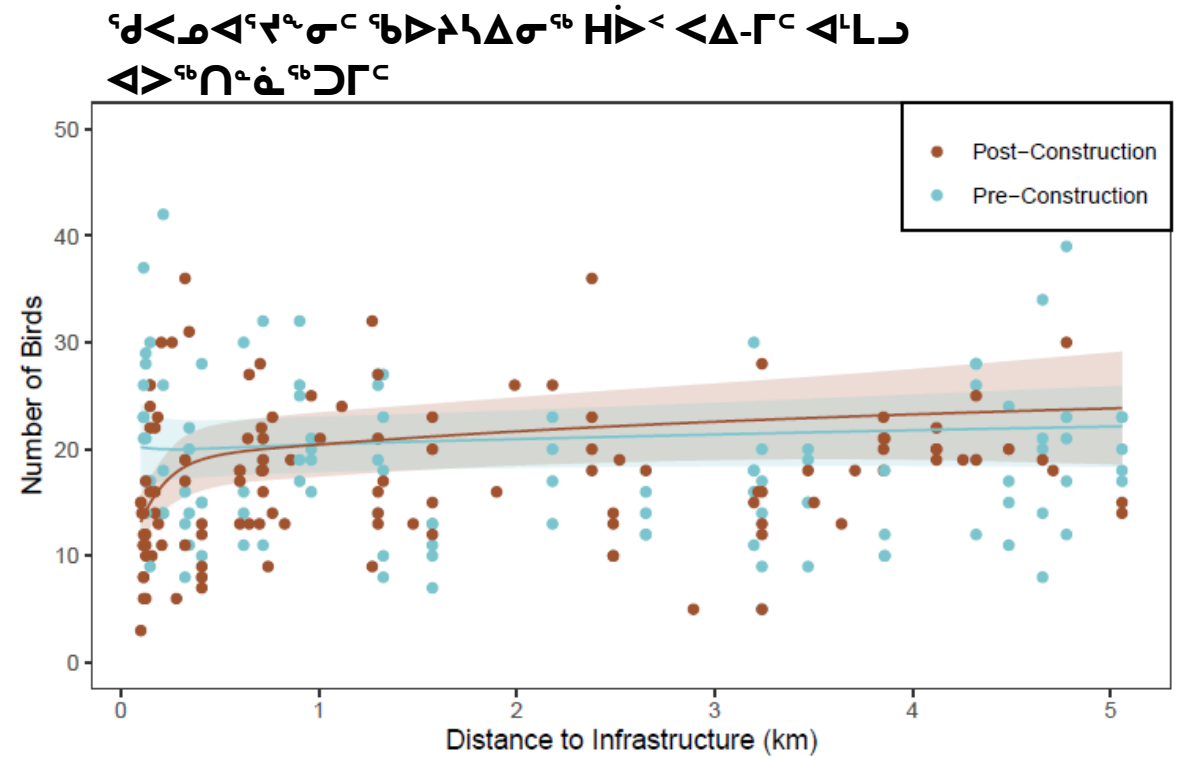
$\triangleright \wedge^{\text{c}} \dot{\iota}^{\flat} d^{\text{c}} \triangleleft^{\text{c}} d n^{\text{c}} r^{\text{c}} \supset^{\flat} \supset \Delta^{\text{c}} \text{ } m^{\text{c}} n \triangleright^{\text{c}} \delta^{\text{c}} r^{\text{c}} \text{ } m^{\text{cc}} l \triangleright^{\text{c}} \supset n^{\flat}$
 $(\gg^{\text{c}} b c^{\text{c}} l).$

$C \triangleright^{\dot{c}} j^{\epsilon} \hookrightarrow r^C \triangleright^b \Delta^C \Delta b^{\epsilon} \triangleright^C \triangleleft^{\epsilon} n^{\epsilon} \dot{a}^{\epsilon} \triangleright^{\epsilon} \Gamma^C \triangleleft^{<\epsilon} d n^b \partial^C$
 $\Delta b^{\epsilon} \gamma_L^{\epsilon} \rightsquigarrow r^C \triangleright^{\epsilon} m^C.$

[illegible]



- 33 ምርመራ ዓመታት 1984-2017.
- ምርመራ ዓመታት ገደብ ልጋጋዎች ምርመራ 1.5 ስኬታዊ ምርመራ ምርመራ ምርመራ ምርመራ.



- ምርመራ ምርመራ ዓመታት.
- ምርመራ ምርመራ ዓመታት ~200 ስኬታዊ ምርመራ ምርመራ ምርመራ.

- ᐱᓪᓂᐃᐅᐃᑦ | DNLUP – ᐃᑐᕗᐅᑦᑖᐅᑦ ᑲᑎᒐᑎᑦᑎᓂᑦ



ᐱᑭᑎᑖ ᐱᑭᑎ

Trading Symbol:
AEM on TSX & NYSE

Investor Relations:
416-847-8665
info@agnicoeagle.com

agnicoeagle.com



AGNICO EAGLE