

# Mobile Caribou Conservation Measures

Kivalliq Inuit Association

Rankin Inlet, 22 September 2022



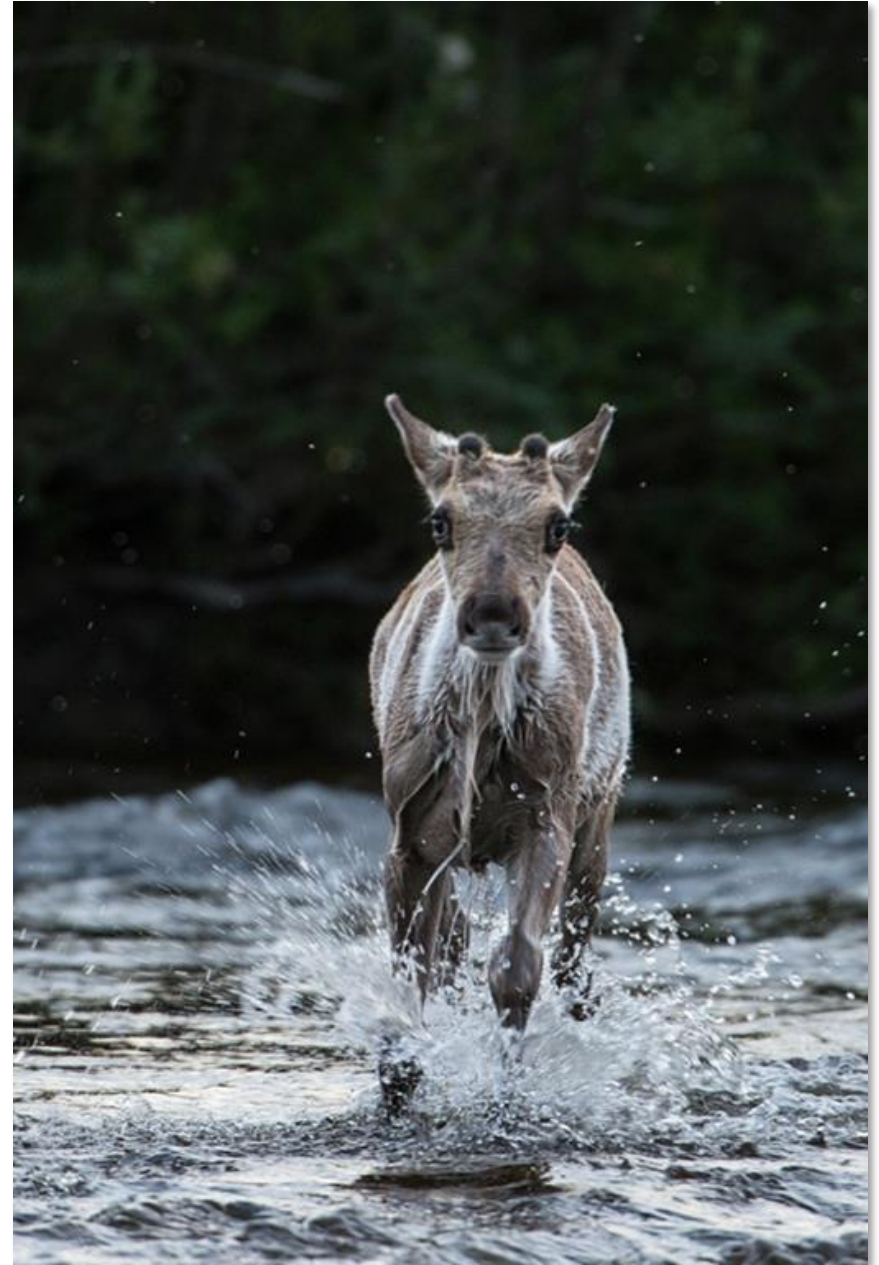
# What Mobile Measures are and are not

- Designed to manage disturbance at exploration sites
- **Not** designed for mines (Meliadine, Meadowbank) where detailed wildlife plans are developed under the NIRB process



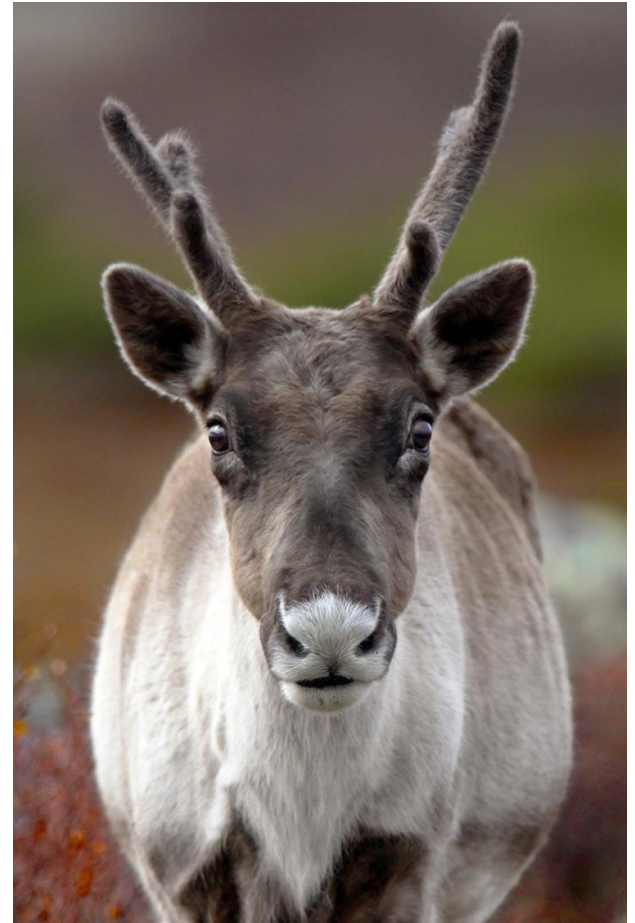
# How we got here

- 1978 Baker Lake
- 2009 Deline (NWT)
- 2015 - 2016 KivIA
- 2021 GNWT Bathurst Caribou Range Plan
- 2022 KivIA



# What are Mobile Measures?

- Avoid and minimize interaction between caribou and exploration
- Rules-based
- Monitoring linked to site-specific mitigation





# How do Mobile Measures work?

- Mapping
- Monitoring to detect the approach of caribou
- Thresholds to trigger mitigation
  - Different levels of mitigation



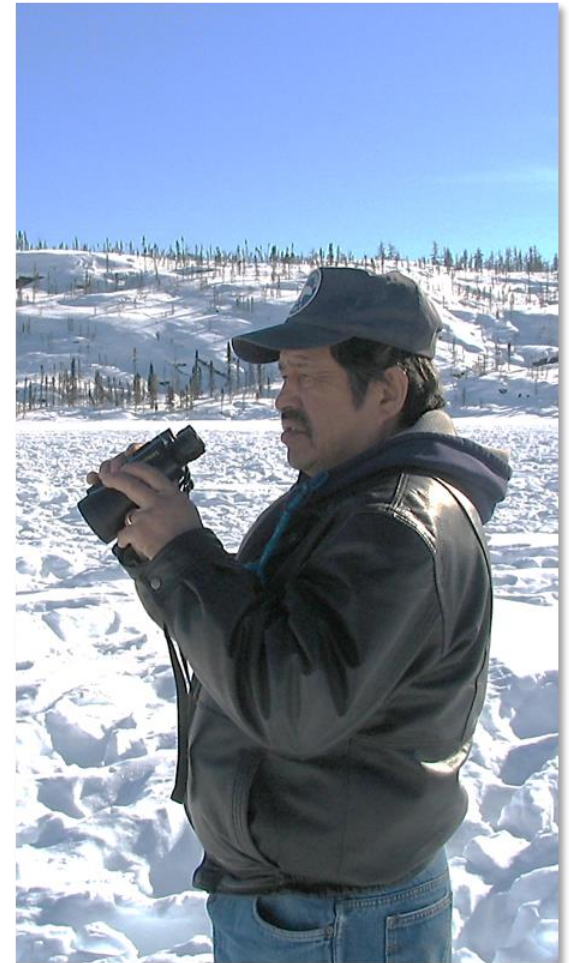
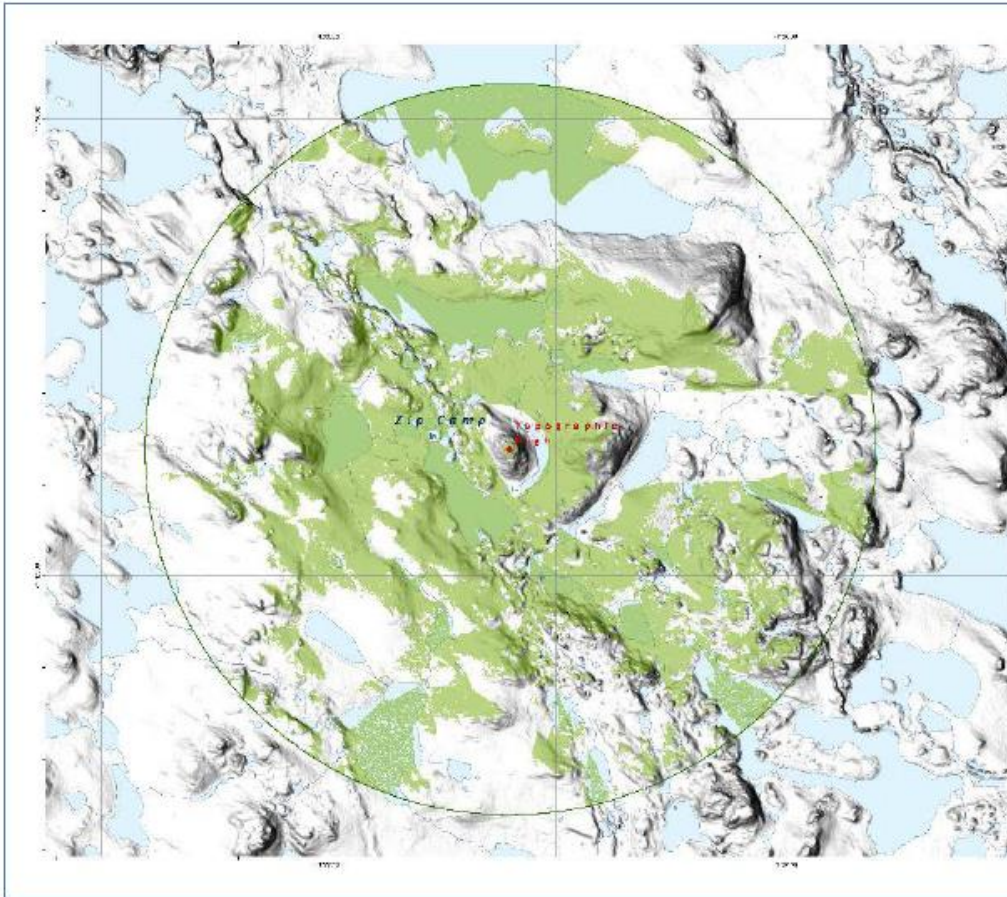
Small two tent, four-man winter geophysics camp (Aurora Geosciences)

# How Mobile Measures work – seasonal sensitivity

- Seasons rated as to their sensitivity to potential disturbance



# How Mobile Measures work – monitoring





# How Mobile Measures work – mitigation

- Pre-determined reduction of activities
- Awareness training
- Increase mitigation to reduce or suspend activities



Bob Camp – 25-30 man exploration camp.  
(Aurora Geosciences)



# How Mobile Measures work – who does what, when?

- RIAs/GN share information/expectations with Proponent
- Proponent monitor/mitigate
- RIAs/GN and Proponent annually report



# Mobile Caribou Conservation Measures Summary

- Flexible
- Predictable
- Adaptable
- IQ and science

