

የዋናው ልዩ ምርጫ ስርዓት በሰላምና በሰፊ ተካሂዶ ለሕዝቡ ምክር ቤት አባላት ምርጫ ስርዓት ላይ ተካሂዶ ለሕዝቡ ምክር ቤት አባላት ምርጫ ስርዓት ላይ ተካሂዶ

በሰላምና በሰፊ ተካሂዶ ለሕዝቡ ምክር ቤት አባላት ምርጫ ስርዓት ላይ ተካሂዶ ለሕዝቡ ምክር ቤት አባላት ምርጫ ስርዓት ላይ ተካሂዶ

ጋራ ምርጫ ስርዓት ላይ ተካሂዶ ለሕዝቡ ምክር ቤት አባላት ምርጫ ስርዓት ላይ ተካሂዶ ለሕዝቡ ምክር ቤት አባላት ምርጫ ስርዓት ላይ ተካሂዶ

ጋራ ምርጫ ስርዓት ላይ ተካሂዶ ለሕዝቡ ምክር ቤት አባላት ምርጫ ስርዓት ላይ ተካሂዶ ለሕዝቡ ምክር ቤት አባላት ምርጫ ስርዓት ላይ ተካሂዶ



የጥቅም ስራ ለማድረግ የሚችል አካል ማድረግ

- [illegible]



ወልደ ሳይሆን ስለሚባል ስለሚባል
የሥራ ስራ ስለሚባል ስለሚባል

- [illegible]

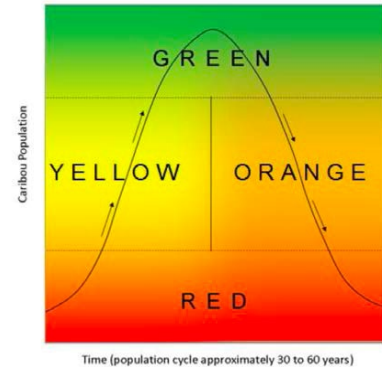
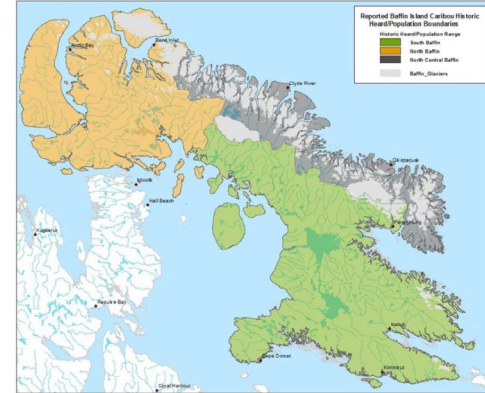
[illegible]

$\supset \sigma \wedge \Delta \subset \Delta^{\text{sb}} \supset^c$
 $\Delta \dot{\subset}^b d^c 1.2 \Gamma^{\text{pp}} \text{sb} \subset \dot{\sigma}^b d^c$
 $\supset \sigma \wedge^a \text{f}^a \sigma^c \Delta \sigma^b \dot{b} \sigma^c$



[illegible]

- [illegible]



5

- $$\Delta \dot{c}^b d^c 2.5 \text{ } ^{\circ} P P ^{\circ} b \dot{c}^b d^c \supset \sigma \dot{\gamma} ^a \dot{r}^c$$

የዋና ምርጫው ፊት ለፊት የሚከተለውን ዓላማ አስቀምጥቶ ነበር፡

- [illegible]



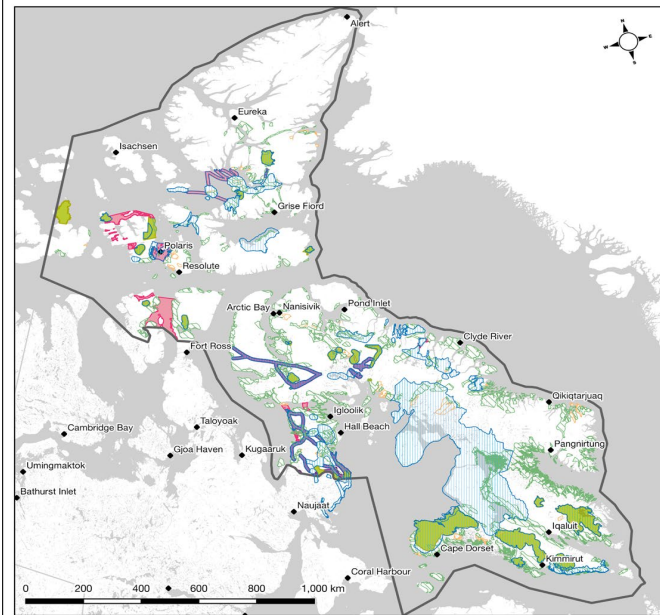
ለርኔሳታዊ ምስጢር 2021 ገበያና ስራ ለማሳደግና ለማረጋገጥ ምዕራባዊ ምርቶችን ለማስተካከልና ለማስፈን ምዕራባዊ ምርቶችን ለማስተካከልና ለማስፈን ምዕራባዊ ምርቶችን ለማስተካከልና ለማስፈን

መኖሪያ ልማት ለሀገር ውስጥ ልማት ማድረግና ለሀገር ውስጥ ልማት ማድረግ፡

[illegible]

ΛC⁹ᵇᵐᵣḡ⁹σ⁹ᵣḡ:

- [illegible]



**DNLUP Caribou
Designations and QWB
Submissions, Qikiqtani
Region**

- DNLUP Caribou Designations**
- Conditional Use
 - Limited Use
 - DNLUP Caribou VECs

- QWB Submissions

-
- QWB Caribou Submissions

- Inuit Owned Lands

-  Inuit Owned Lands (with surface only rights)
-  Inuit Owned Lands (with surface and subsurface rights)

- Base Data
- ◆ Nunavut Commur
 - ▢ Qikiqtani Region

Map produced by the Firelight Group on April 26, 2002. Base data originates from CanVec. Project-specific data originates from the 2001 Draft Nunavut Land Use Plan, the 2001 Draft Nunavut Planning Commission regarding the 2001 Draft Nunavut Land Use Plan, and is subject to the limitations of that study as detailed in this report. This map cannot be used in isolation from the report.

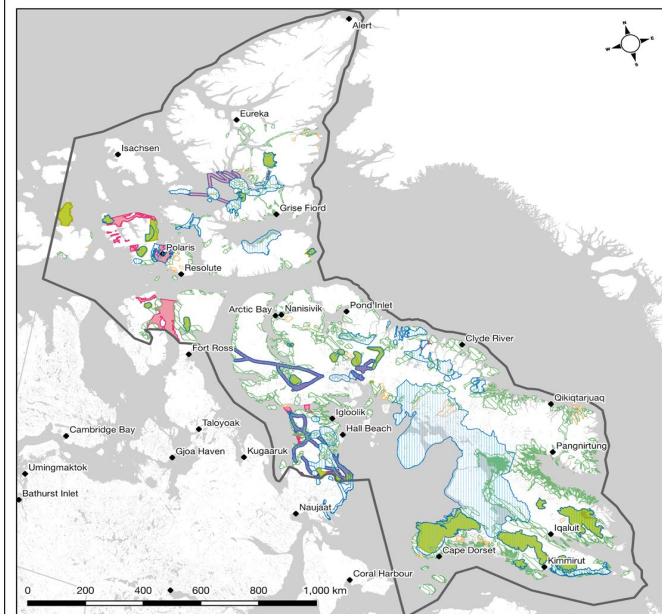
ለርኅሴቶቹ 2021 ገበየከፋፊ ልማት ምዕራፍ
 ልማት ምዕራፍ ልማት ምዕራፍ – ጋራ ልማት

▷ ῥᾶς:

[illegible]

ΛC⁹ᵇᵐᵖᵒσᵖᵖᵖ:

- [illegible]



**DNLUP Caribou
Designations and QWB
Submissions, Qikiqtani
Region**

DNLUP Caribou Designations

- Conditional Use
- Limited Use
- DNLUP Caribou VECs

QWB Submissions

Inuit Owned Lands

 Inuit Owned Lands (with surface only rights)

 Inuit Owned Lands (with surface and subsurface rights)

Base Data

- Nunavut Communities
- Qikiqtaaluk Region

Map produced by the Firelight Group on April 26, 2022. Base data originates from CanVec, Project-specific data originates from the 2021 Draft Nunavut Land Use Plan (DLUP2021) and the Nunavut Land Use Planning Commission. Map projected to Canada Albers Equal Area Conic.

This map does not fully capture the relationship of the Giliqtiini Inuit Association to their traditional lands and the management of the present-day Aboriginal rights. This map is a living document and is intended to be amended and refined over time. The data from this map originate from CanVec, the 2021 Draft Nunavut Land Use Plan, and the Giliqtiini Inuit Association and may only be reproduced with written permission. This map is not intended to be used for Nunavut Land Use Planning Commission regarding the 2021 Draft Nunavut Land Use Plan, and is subject to the limitations of that study as detailed in this report. This map cannot be used in isolation from the report.

[illegible]

כ^בכΔ^ג כ^גגσ^אר^ג:

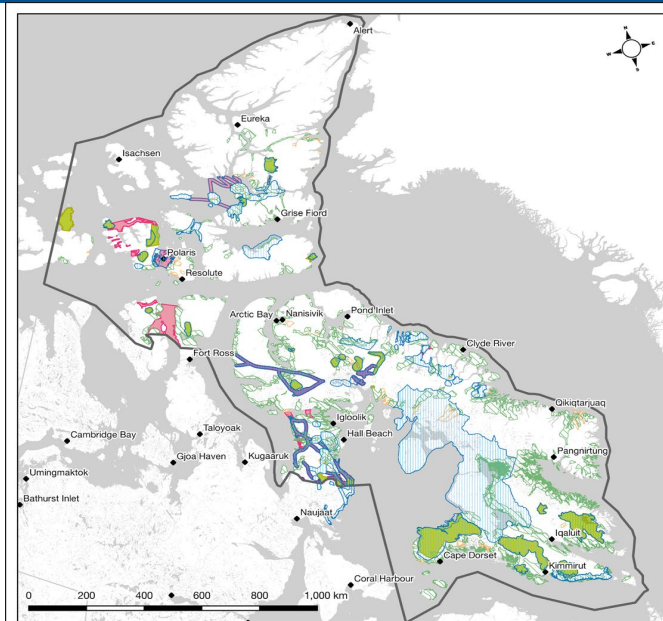
[illegible]

၂၀၁၄ ခုနှစ် ဖွဲ့စည်းပုံအခြေခံဥပဒေ

የዋናው ምርጫ ልማት ምክር ቤቱ ለጥቅምት 10 ቀን ውስጥ ለሕዝቡ ማብራሪያ ማድረግ እንደሚችል አስታውቋል።

ΔΓ^cΠΔ^{eb}Δ^c Δb^cΔ^aΓ^c.

ፈረዳሪ ፈጥጋጭፊ ልዩልደረ ነጋሥት ሕይወት ለጋራህዝብ



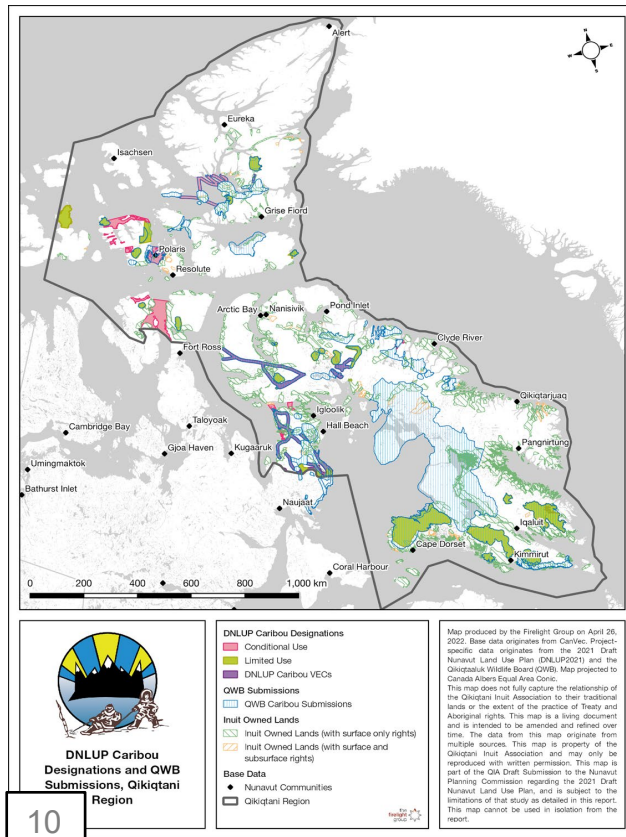
**DNLUP Caribou
Designations and QWB
Submissions, Qikiqtani
Region**

- DNLUP Caribou Designations**
- Conditional Use
 - Limited Use
 - DNLUP Caribou VECs
- QWB Submissions**
- QWB Caribou Submission
- Inuit Owned Lands**
- Inuit Owned Lands (with subsurface rights)
 - Inuit Owned Lands (without subsurface rights)
- Base Data**
- Nunavut Communities
 - Qikittani Region

Map produced by the Firelight Group on April 26, 2002. Base data originates from CanVec. Project-specific data originates from the 2001 Drifted and Dispersed Walrus Survey conducted by the Qikiqtan Wildlife Board (QWB). Map drafted by Canada Albers Equal Area Conic.

This map does not fully capture the relationship of the Inuit to the land and their traditional lands or the extent of the practice of Treaty and Aboriginal rights. This map is a living document and is intended to be amended and refined over time. The data from this map originate from the Qikiqtan Wildlife Board (QWB) and the Qikiqtan Inuit Association and may only be reproduced with written permission. This map is part of the CIA Draft Submission to the Nunavut Planning Commission. It is subject to the Nunavut Land Use Plan, and is subject to the limitations of that study as detailed in this report.

This map cannot be used in isolation from the report.

[illegible]

ᐅᓂᐱᑦ ᕐᕈᕐᕋᐅᓂᔭᐸ
ᓯᓶᓴᑦ ᐅᓂᔭᒃ ᒪᑦᑲᑦ ᐇᓂ 2021ᓖ
ᐱᐱᓴᓚᐅᓂᔭᑦ ᐅᐅᓖᒃᒪᕐᕐᑲᑦ
ᓄᓇᑦ ᐅᐅᓂᔭᐅᓂᔭᓂᓖᑦ
DNU Caribou Designations

[illegible][illegible]

$\langle\langle\langle\zeta\eta\kappa^b\rangle^b\rangle^b - \text{VECS}(\sigma\tau\Delta^c\delta^c, \Delta^a\eta^c\zeta\delta^c, \langle\tau\eta^b\delta^c\rangle$
 $\Delta\sigma\eta^b\tau\delta^c\rangle)$

ንዓምኡ ርጅሞ ርጅሞ ርጅሞ
 ልደረግ ስሙ ስሙ ስሙ
 ርጅሞ ርጅሞ ርጅሞ ርጅሞ
 ርጅሞ ርጅሞ ርጅሞ ርጅሞ

[illegible]

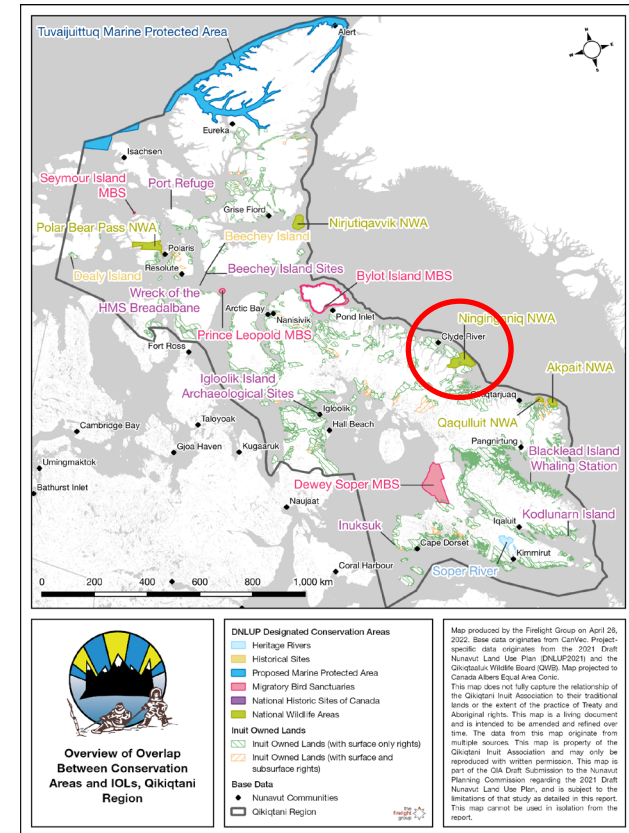
ΔοΔ^c ^bC>σ^cρ^c Δ^bρ^bρ^cσ^b
 ^cρ^cρ^cρ^c

[illegible]

ΔΗΛΩΝΟΥΝΤΕΣ ὅτι ἡ ἀποστολή ἐκείνη ἀνέβη ὡς ἀπὸ τοῦ οὐρανοῦ καὶ ὡς ἀπὸ τοῦ ἁγίου πνεύματος.

[illegible]

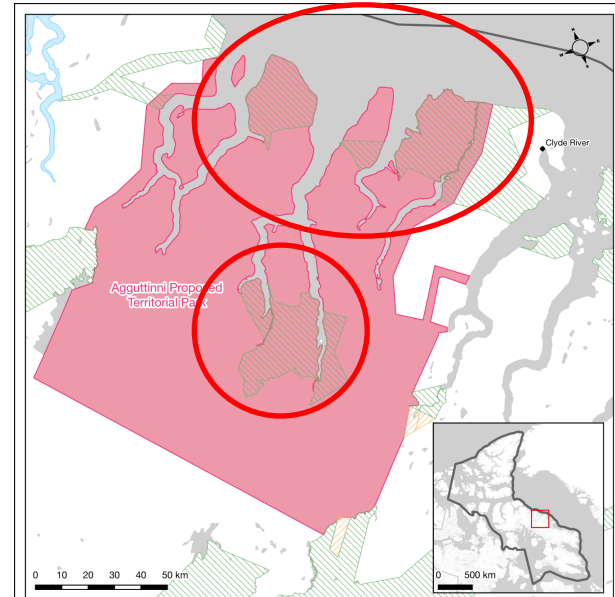
- [illegible]

[illegible]

ԴժժԸ ՎԵՋԵՐԸ ՏՊՐԸ ԴԵՂՎԻԿՐԸ
 ՎՐԵՆՈՐՅՈ՛ՐԸ

[illegible]

- [illegible]

[illegible]

Overlap Between Agguttinni Proposed Territorial Park and IOLs

DNLUP Designated Future Parks

- Proposed National Marine Conservation Area
- Proposed Territorial Parks

Inuit Owned Lands

- Inuit Owned Lands (with surface only rights)
- Inuit Owned Lands (with surface and subsurface rights)

Base Data

- Nunavut Communities
- Qikiqtaaluk Region

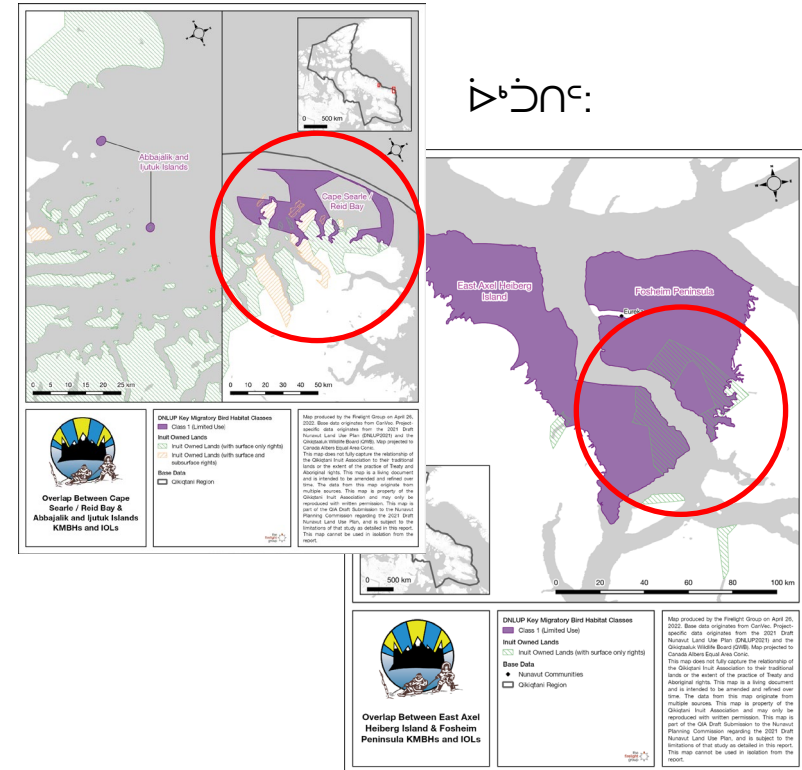
Map produced by the Firelight Group on April 28, 2002. Base data originates from CanVec. Project-specific data originates from the 2001 Draft National Parks and Wildlife Act (NPWA) and the 2001 Draft Quebec Wildlife Board (QWB) Map produced by the Canada Albers Equal Area Relationship. This map does not fully capture the relationship of the land at stake to the traditional lands or the extent of the practice of Treaty and Aboriginal rights. This map is a living document and is intended to be amended and refined over time. The data from this map originates from CanVec. This map is not to be used by the Glicetuk Inuit Association and may only be reproduced with written permission. This map is not to be used in support of any land claim or Planning Commission regarding the 2001 Draft Nunavut Land Use Plan, and is subject to the limitations of that study as detailed in this report. This map cannot be used in isolation from the 1999

ΔΕΛΤΑ ΔΙΟΙΚΗΤΙΚΗΣ ΑΝΑΡΧΙΑΣ

ለኢሰቃይ ጋርታዎች በግልጽ ዲሴምበር ፩ኛው
(ዲሴምበር ፩ኛው ፲፱፻፲፱ ዓ.ም.)

- [illegible]

ᐃᓂᕐ:



◀ ԵՐԵՎԱՆ - ՀԱՅԿԱՅԻՆ ԳԵՂԱՐՈՒԹՅԱՆ
ՀԱՅԿԱՅԻՆ ԳԵՂԱՐՈՒԹՅԱՆ

- [illegible]

ርኅህዳር ልዩ

[illegible]

- ልዩነቶችን ለመለየት ለሚያስፈልጉት ሁሉም ጉዳዮች ማስታወሻዎችን ማጥናት
- ለሚከተሉት ጉዳዮች ማስታወሻዎችን ማጥናት

ፍጥነት ሲገኝ.

ግላዊነት?

