

The Minerals Industry in Nunavut

– Enhancing and protecting its benefits and potential is critical –

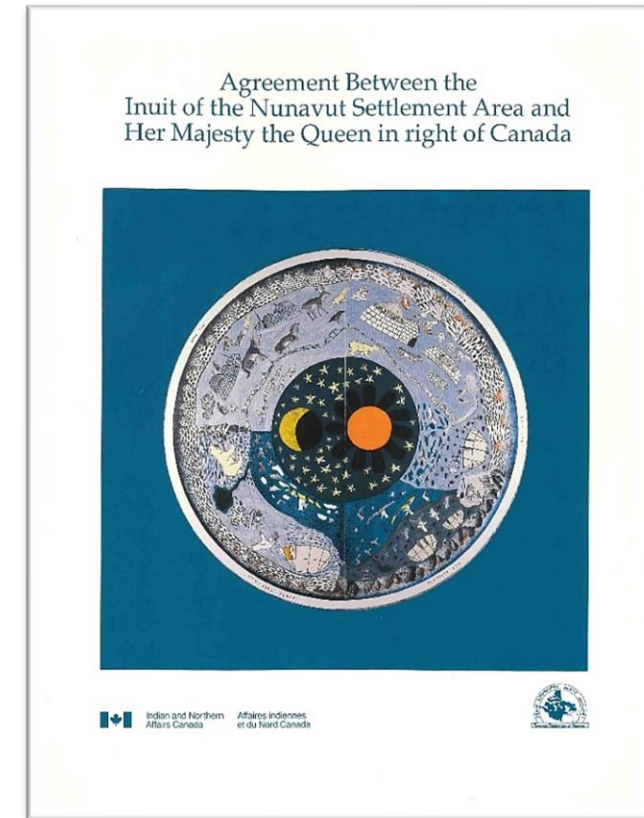
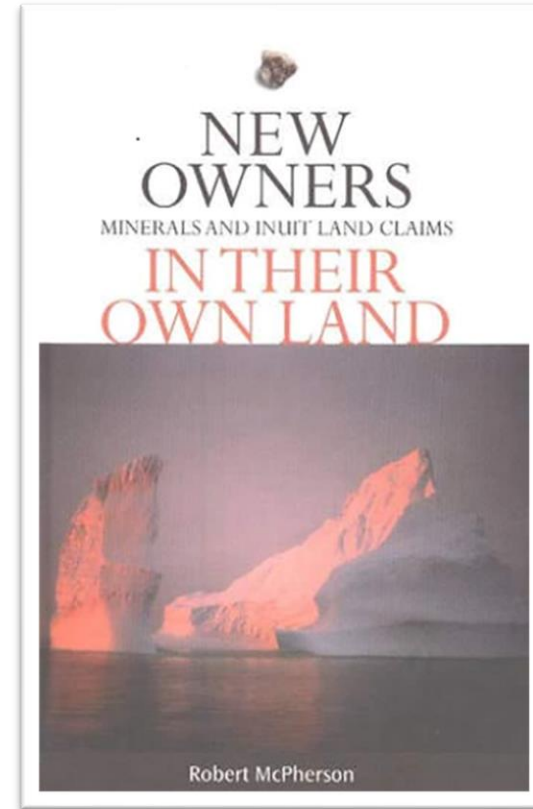
To: NPC – Regional Public Hearings 2022 DNLUP

Who is the Chamber of Mines?

About	Mission	Vision
<p><i>Since 1967, supporting responsible mineral development in the North. Offices in Yellowknife and Iqaluit.</i></p> <p><i>Over 200 members:</i></p> <ul style="list-style-type: none"><i>• Mining & exploration</i><i>• Service & supply</i><i>• Indigenous and non-Indigenous</i>	<p><i>To provide leadership on, and advocate for, responsible and sustainable mineral exploration and development in the NWT and Nunavut</i></p>	<p><i>A vibrant and sustainable exploration and mining industry in the NWT and Nunavut which has the support of the peoples of the North.</i></p>

NLCA: Inuit are Landowners and Regulators

- Inuit are the 2nd largest landowners in the world.
- NLUP process dates back to the Nunavut Land Claims Agreement.
- Approval of 3 signatories required.



Mining today: 4 Operating Mines and several Developing Projects



Hope Bay Mine (gold)



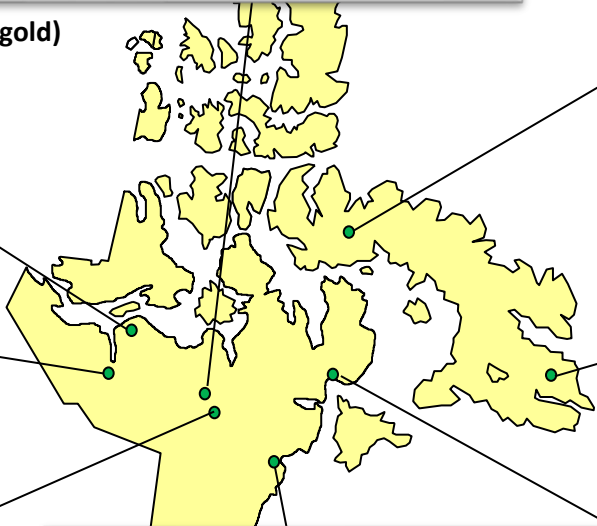
Amaruq Mine (gold)



Mary River Mine (iron)



Back River Mine (gold)



Chidliak Project (diamonds)



Meadowbank Mine (gold)



Meliadine Mine (gold)



Naujaat Project (diamonds)

Nunavut's Unique Regulatory Process

- Nunavut has a robust regulatory process
- Signing of Inuit Impact and Benefit Agreements, IIBA's
- Community consultations



Mitigation: Industry and environmental impacts

- Industry considers the environment and implements IQ.
- Industry responds to scientific and IQ findings to reduce impacts.
- Land use and caribou can co-exist.



Mitigation: Environmental Monitoring Approaches



Mitigation: Environmental Monitoring Approaches



Climate Change and Towards Sustainable Mining

TSM Protocols

Environmental Stewardship



Tailings Management
Biodiversity Conservation
Management
Water Stewardship

Communities & People



Aboriginal & Community Outreach
Safety & Health Management
Crisis Management & Communications
Planning
Preventing Child and Forced Labour

Energy Efficiency



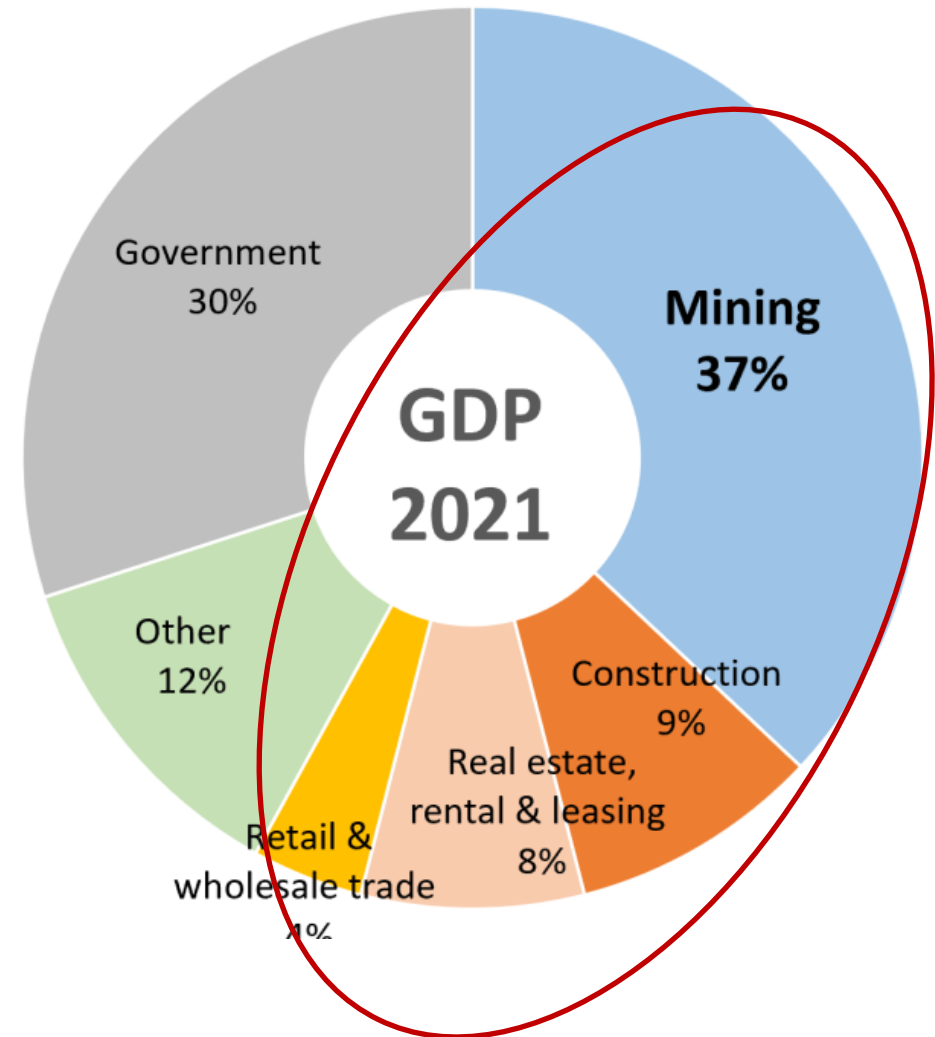
Energy Use & Greenhouse Gas
Emissions Management



The Mining Association
of Canada
L'association minière
du Canada

Mining is driving Nunavut's economy

- Direct benefits are significant
- Indirect benefits include:
 - construction, real estate, transportation, trade, etc.



Growing mining socio-economic benefits

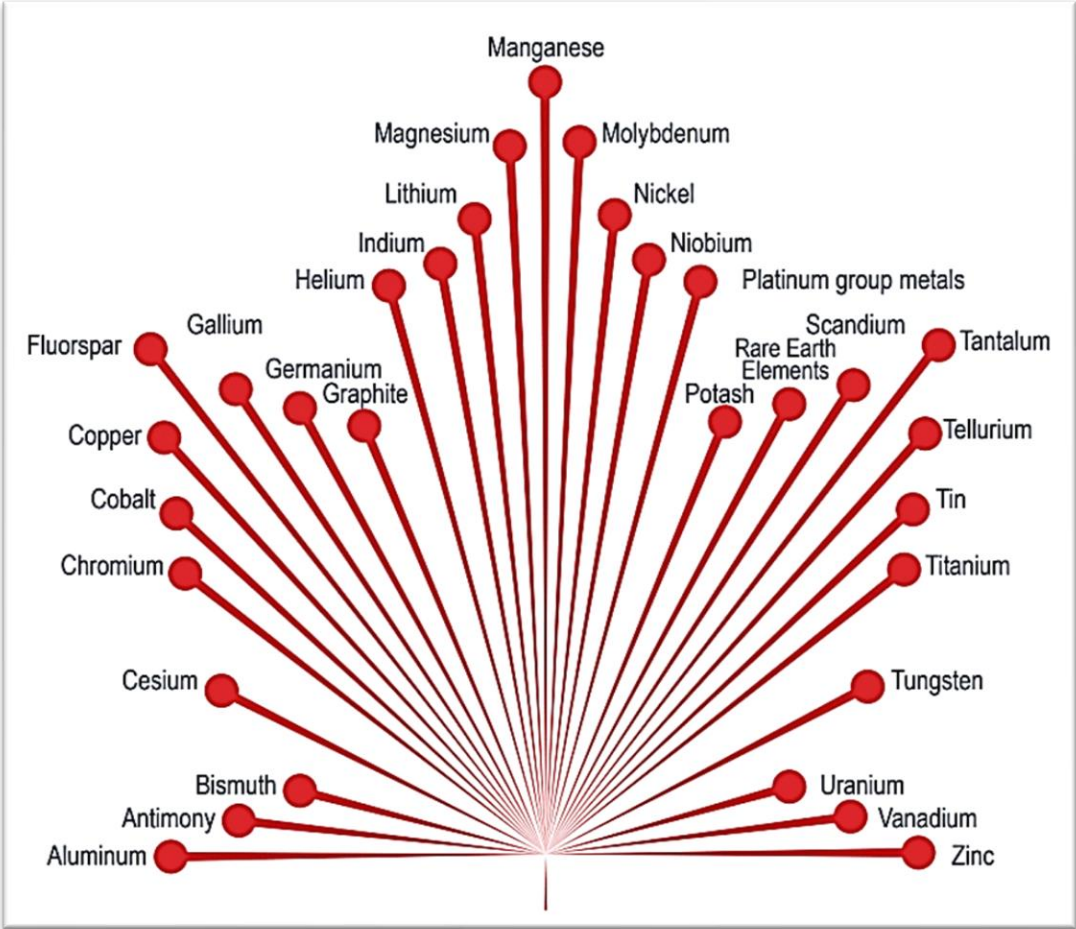
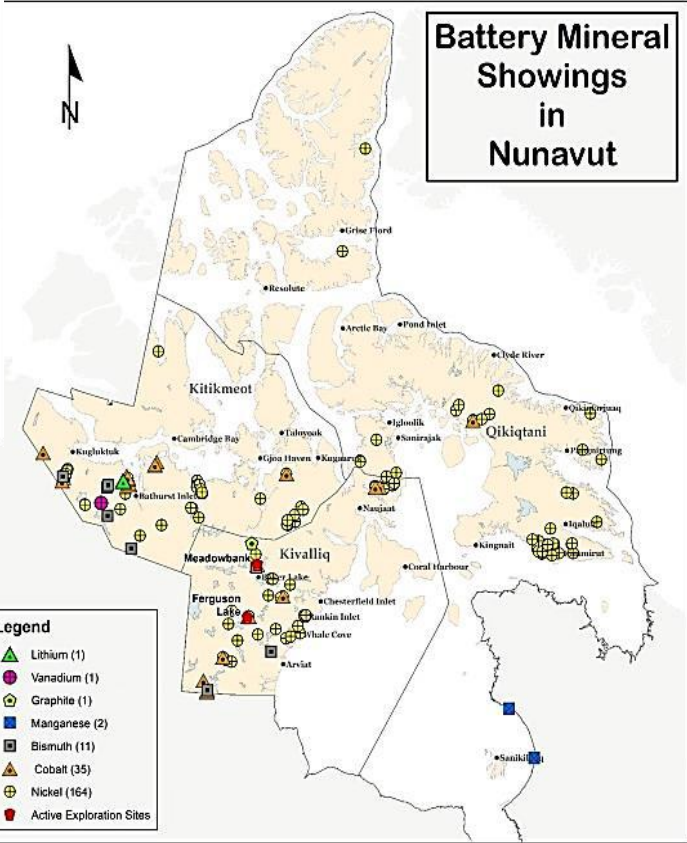
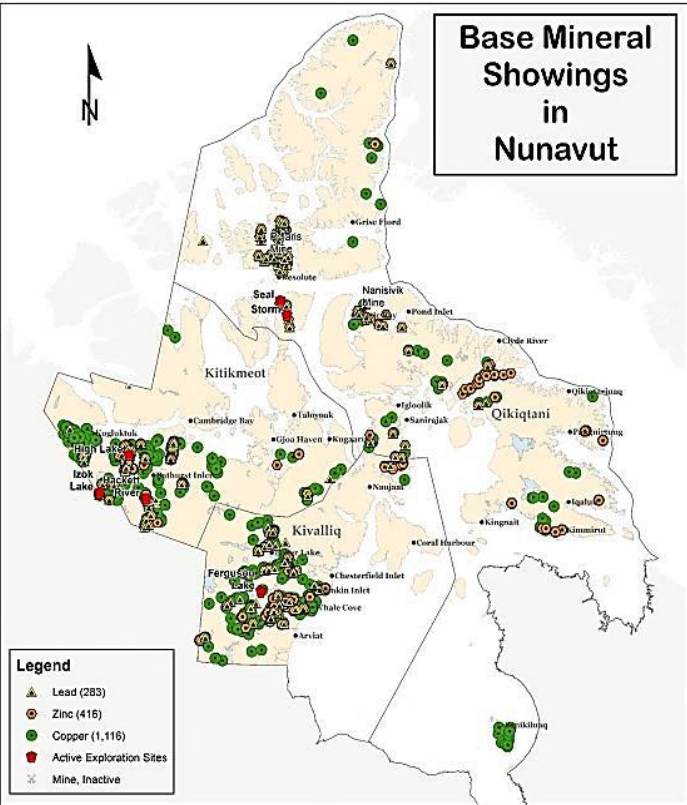
Nunavut mining benefits (2009-2020)

- 30,000 person-years of employment
- \$10.8 Billion in business
- \$Billions in taxes and royalties to public and Inuit governments
- \$100's million dollars to communities in IIBA payments, scholarships, donations, & community wellness projects

Source: Compilation of mines' annual socio-economic agreement data




The DNLUP does not support Canada's Critical Minerals Strategy



Nunavut will need to harness its resource potential

- To support strong and healthy communities
- To support devolution
- The current DNLUP will not help

 **CBC** | **MENU** ▼

DOCS The Nature of Things CBC Docs POV The Passionate Eye Short Docs documentary Channel

CBC Docs Specials · In Depth

10,000 young people in Nunavut will come of age in the next decade. What does their future look like?

Our member companies are helping

Millions invested by Nunavut companies towards education and training programs:

- Work-readiness programs
- On site skills and training
- Scholarships
- Youth programs
- STEM camps



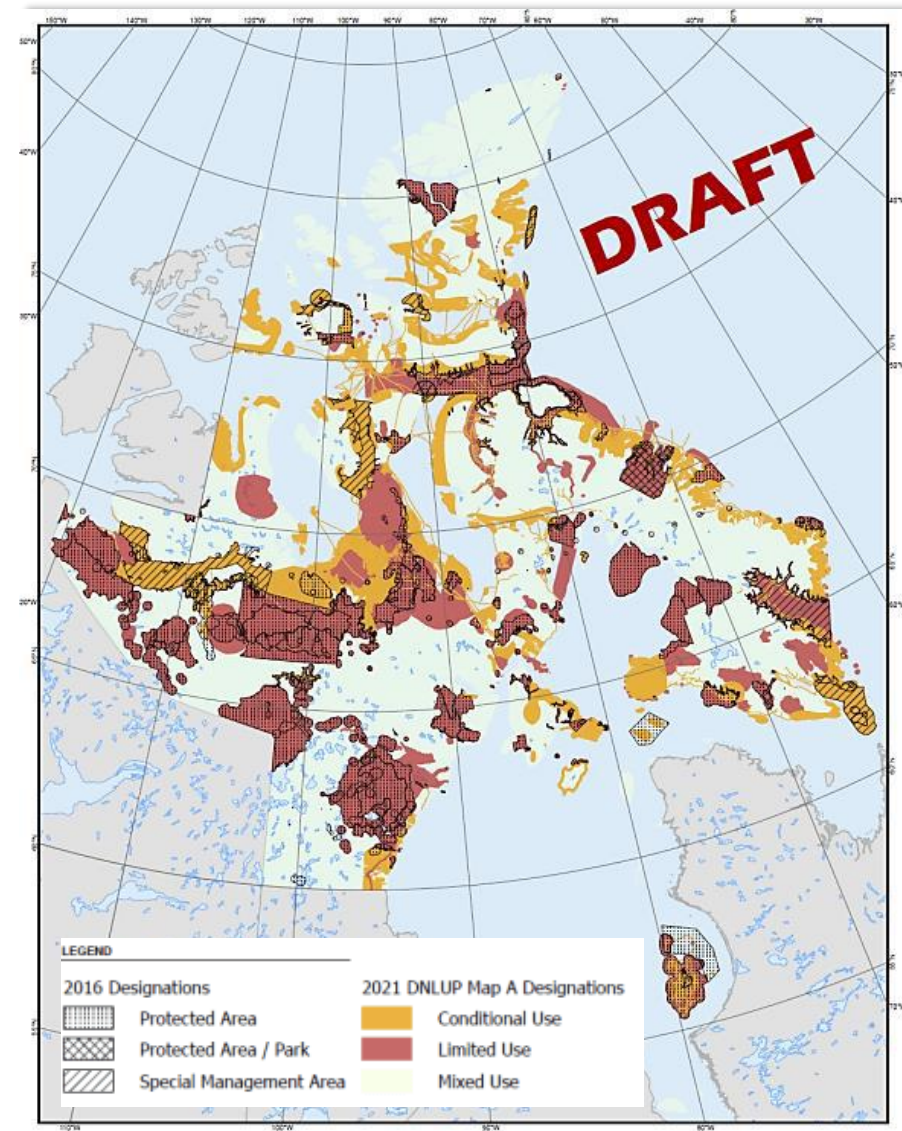
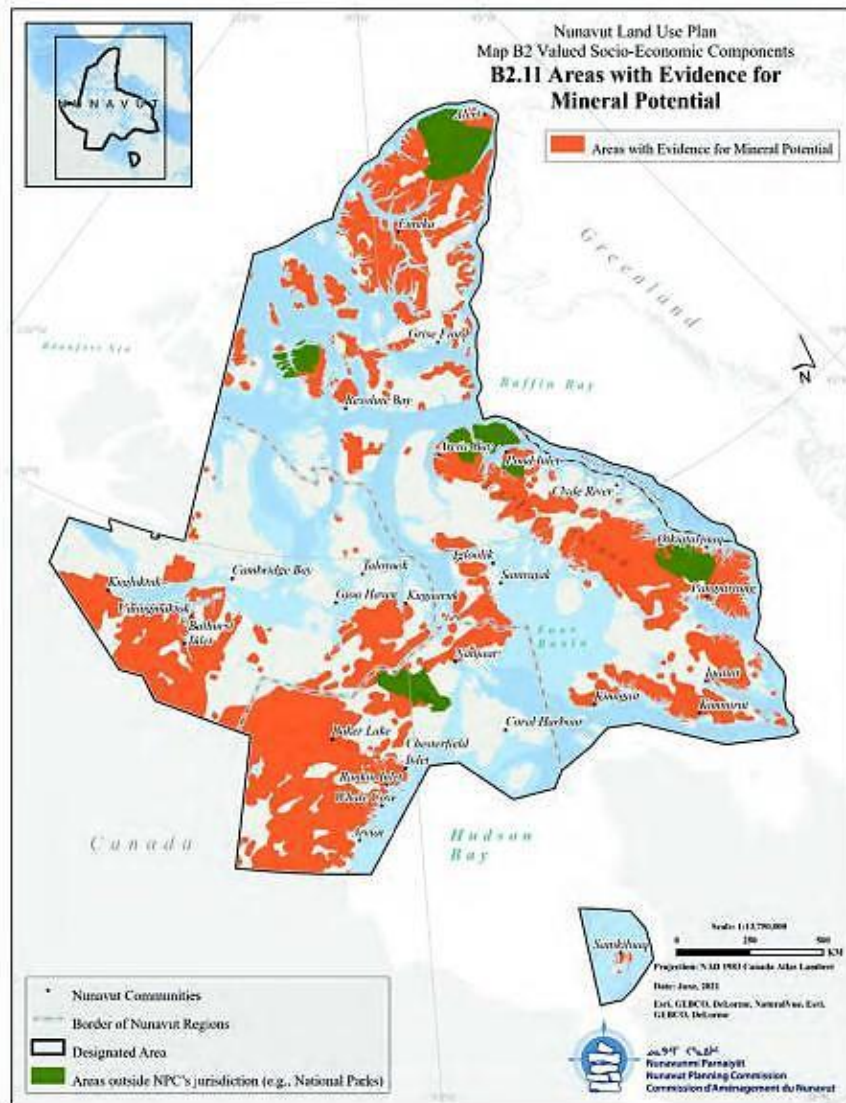
AGNICO EAGLE



DE BEERS GROUP



Mineral potential is at risk with this DNLUP



Our recommendations

- Balance between land development and land protection.
- Reduce the **Limited** and **Conditional Use** designations.
- Leave the conditions of usage on remaining lands to Inuit organizations, the NIRB and NWB.
- Publish all environmental values gathered to date in a guide to land users and managers.

We need a LUP that helps support development opportunities and success!

