

Schedule B  
Nunavut Land Use Plan  
Valued Ecosystem and  
Socio-Economic Components

Water Management Areas

Floe Edges

VEC

Valued Ecosystem  
Components

Valued Socio-  
Economic  
Components

Proposed Transportation Corridors

Speculative Transportation Corridors

VSEC

Administrative Boundaries

Area of Equal Use and Occupancy

Nunavut Settlement Area Boundary

Inuit Owned Lands (Surface and Subsurface including minerals)

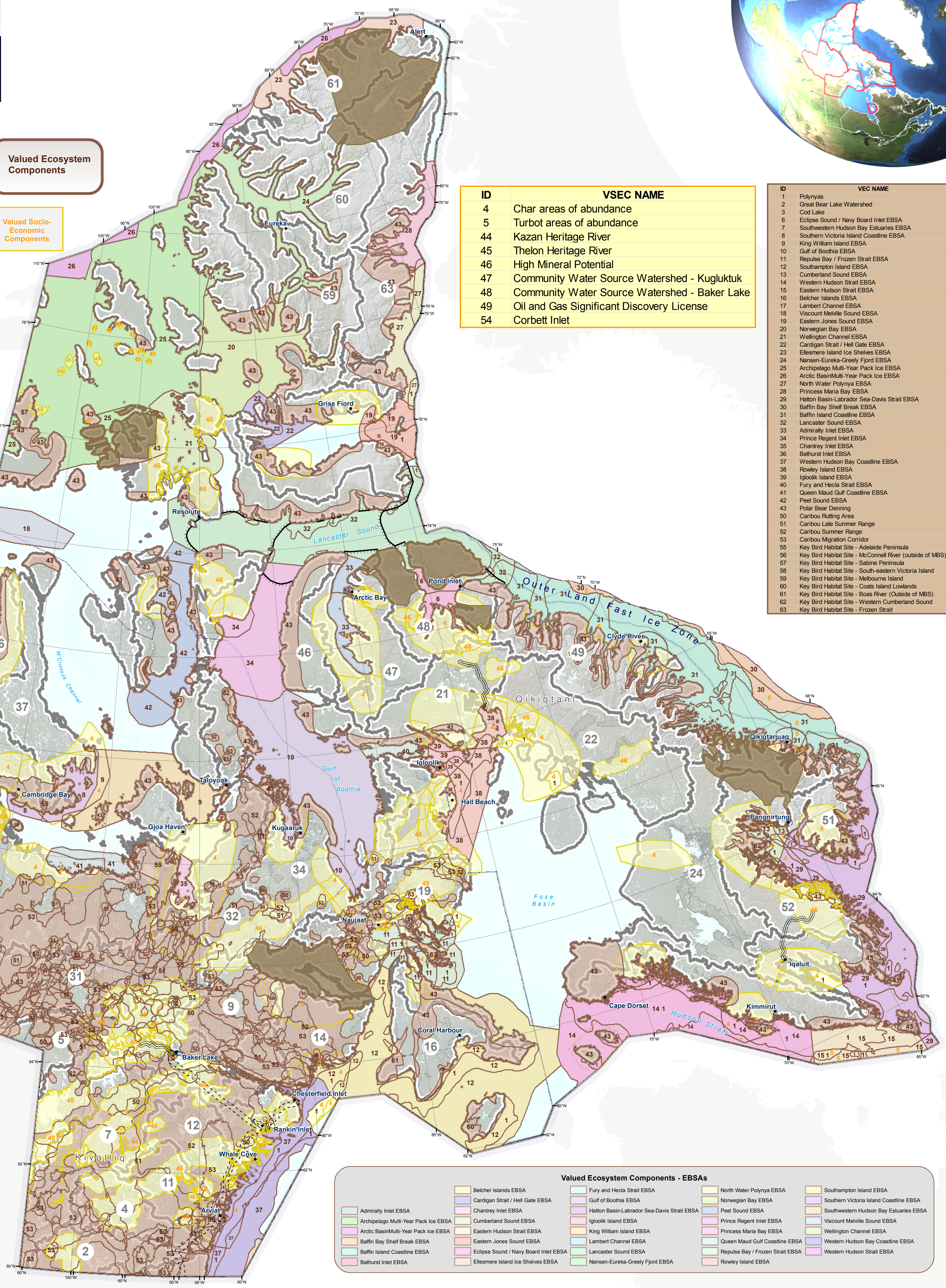
Inuit Owned Lands (Surface excluding minerals)

Established Parks (Land Use Plan does not apply)

ID	VSEC NAME
4	Char areas of abundance
5	Turbot areas of abundance
44	Kazan Heritage River
45	Thelon Heritage River
46	High Mineral Potential
47	Community Water Source Watershed - Kugluktuk
48	Community Water Source Watershed - Baker Lake
49	Oil and Gas Significant Discovery License
54	Corbett Inlet

ID	VEC NAME
1	Polynyas
2	Great Bear Lake Watershed
3	Cod Lake
6	Eclipse Sound / Navy Board Inlet EBSA
7	Southern Hudson Bay Estuaries EBSA
8	Southern Victoria Island Coastline EBSA
9	King William Island EBSA
10	Gulf of Boothia EBSA
11	Repulse Bay / Frozen Strait EBSA
12	Southampton Island EBSA
13	Cumberland Sound EBSA
14	Western Hudson Strait EBSA
15	Eastern Hudson Strait EBSA
16	Belcher Islands EBSA
17	Lambert Channel EBSA
18	Viscount Melville Sound EBSA
19	Eastern Jones Sound EBSA
20	Norwegian Bay EBSA
21	Wellington Channel EBSA
22	Cardigan Strait / Hell Gate EBSA
23	Ellesmere Island Ice Shelves EBSA
24	Nansen-Eureka-Greely Fjord EBSA
25	Archipelago Multi-Year Pack Ice EBSA
26	Arctic Basin Multi-Year Pack Ice EBSA
27	North Water Polynya EBSA
28	Princess Maria Bay EBSA
29	Hatton Basin-Labrador Sea-Davis Strait EBSA
30	Baffin Bay Shelf Break EBSA
31	Baffin Island Coastline EBSA
32	Lancaster Sound EBSA
33	Admiralty Inlet EBSA
34	Prince Regent Inlet EBSA
35	Chantrey Inlet EBSA
36	Bathurst Inlet EBSA
37	Western Hudson Bay Coastline EBSA
38	Rowley Island EBSA
39	Igloolik Island EBSA
40	Fury and Hecla Strait EBSA
41	Queen Maud Gulf Coastline EBSA
42	Peel Sound EBSA
43	Polar Bear Denning
50	Caribou Rutting Area
51	Caribou Late Summer Range
52	Caribou Summer Range
53	Caribou Migration Corridor
55	Key Bird Habitat Site - Adelaide Peninsula
56	Key Bird Habitat Site - McConnell River (outside of MBS)
57	Key Bird Habitat Site - Sabine Peninsula
58	Key Bird Habitat Site - South-eastern Victoria Island
59	Key Bird Habitat Site - Melbourne Island
60	Key Bird Habitat Site - Coats Island Lowlands
61	Key Bird Habitat Site - Boas River (Outside of MBS)
62	Key Bird Habitat Site - Western Cumberland Sound
63	Key Bird Habitat Site - Frozen Strait

ID	Water Management Area Name
1	Seal Watershed
2	Thielvass Watershed
3	Gellini Watershed
4	Tha-anne Watershed
5	Thelon Watershed
6	Dubawit Watershed
7	Kazan Watershed
8	Baker Lake Watershed
9	Quokh Watershed
10	Chesterfield Inlet Watershed
11	Maguse Watershed
12	Ferguson Watershed
13	Wilson Watershed
14	Lorillard Watershed
15	Wager Bay Watershed
16	Hudson Bay Islands Watersheds (All Islands HB+JB)
17	Northern Southampton Island Watershed
18	Repulse Bay Watershed
19	Barrow Watershed
20	Kingora Watershed
21	Gifford Watershed
22	MacDonald Watershed
23	Prince Charles Island Watershed
24	Koukdjuak Watershed
25	Aukpar Watershed
26	Great Bear Lake
27	Great Bear Watershed
28	Amundsen Gulf Watershed
29	Coppermine Watershed
30	Coronation Gulf Watershed
31	Queen Maud Gulf Watershed
32	Back Watershed
33	Back-Hayes (NJ) Watershed
34	Rasmussen Watershed- Larsen Sound Watershed
35	Gulf of Boothia Watershed
36	Northwestern Victoria Island Watershed
37	Hadley Bay Watershed
38	Eastern Victoria Island Watershed
39	Southern Victoria Island Watershed
40	Prince-Albert Sound Watershed
41	Minto Inlet Watershed
42	King William Island Watershed
43	Western Prince of Wales Island Watershed
44	Eastern Prince of Wales Island Watershed
45	Western Somerset Island Watershed
46	Eastern Somerset Island Watershed
47	Western Brodeur Peninsula Watershed
48	Admiralty Inlet Watershed
49	Eclipse Sound Watershed
50	Southwestern Baffin Bay Watershed
51	Northwestern Davis Strait Watershed
52	Northern Cumberland Sound Watershed
53	Southern Cumberland Sound Watershed
54	Frobisher Bay Watershed
55	Melville Island Watershed
56	Bathurst and Cornwallis Islands Watershed
57	Western Devon Island Watershed
58	Eastern Devon Island Watershed
59	Sverdrup Islands Watershed
60	Nansen Sound and Eureka Sounds Watershed
61	Greely Fjord Watershed
62	Arctic Ocean and Lincoln Sea Watershed
63	Northeastern Ellesmere Island Watershed
64	Southeastern Ellesmere Island Watershed
65	Hudson Strait Watershed (North and West) (All Islands - Qc)



Valued Ecosystem Components - EBSAs

Admiralty Inlet EBSA	Belcher Islands EBSA	Fury and Hecla Strait EBSA	North Water Polynya EBSA	Southampton Island EBSA
Archipelago Multi-Year Pack Ice EBSA	Cardigan Strait / Hell Gate EBSA	Gulf of Boothia EBSA	Norwegian Bay EBSA	Southern Victoria Island Coastline EBSA
Arctic Basin Multi-Year Pack Ice EBSA	Chantrey Inlet EBSA	Hatton Basin-Labrador Sea-Davis Strait EBSA	Peel Sound EBSA	Southern Hudson Bay Estuaries EBSA
Baffin Bay Shelf Break EBSA	Cumberland Sound EBSA	Igloolik Island EBSA	Prince Regent Inlet EBSA	Viscount Melville Sound EBSA
Baffin Island Coastline EBSA	Eastern Hudson Strait EBSA	King William Island EBSA	Princess Maria Bay EBSA	Wellington Channel EBSA
Bathurst Inlet EBSA	Eastern Jones Sound EBSA	Lambert Channel EBSA	Queen Maud Gulf Coastline EBSA	Western Hudson Bay Coastline EBSA
	Eclipse Sound / Navy Board Inlet EBSA	Lancaster Sound EBSA	Repulse Bay / Frozen Strait EBSA	
	Ellesmere Island Ice Shelves EBSA	Nansen-Eureka-Greely Fjord EBSA	Rowley Island EBSA	

For Data Sources see Draft Nunavut Land Use Plan (DNLUP).  
For Illustrative purposes only  
Projection: Canada Lambert Conformal Conic, NAD83  
North is up and follows gridlines  
Date: 20 Jun 2016  
Produced By: Nunavut Planning Commission

DRAFT

If a designation boundary appears to follow a geographic feature or property boundary, it follows that feature or boundary.