

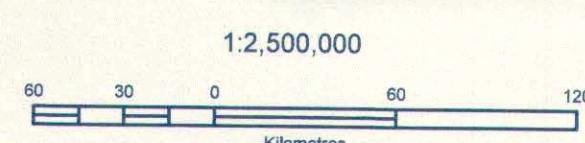
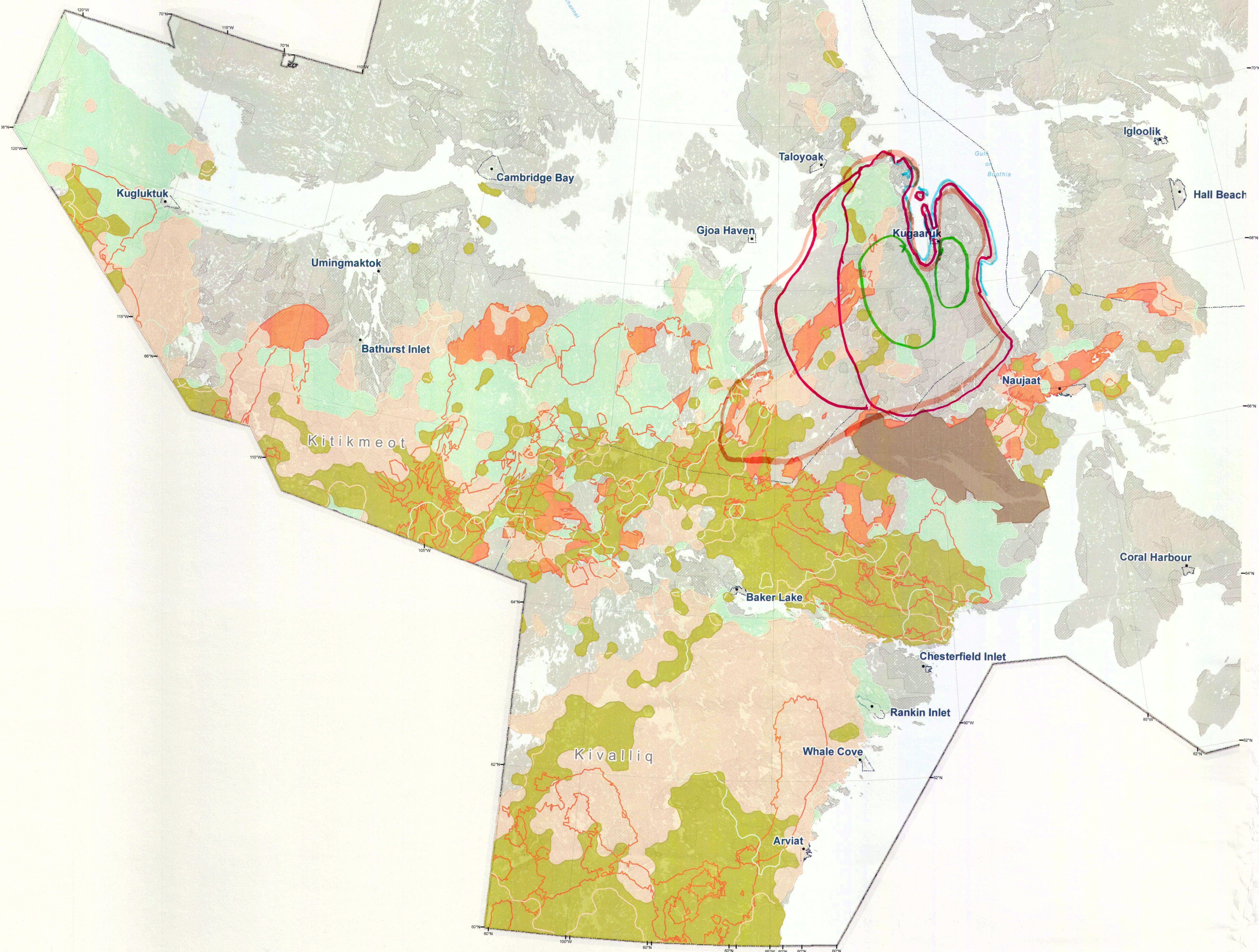


ᑎᓄᓐᓂᓐ ᑎᓄᓐᓂᓐ  
Nunavut Planning Commission  
Commission d'Aménagement du Nunavut

Schedule B2  
Nunavut Land Use Plan  
Caribou Ranges  
Valued Ecosystem Components

- Caribou Rutting Area
- Caribou Late Summer Range
- Caribou Summer Range
- Caribou Migration Corridor

- Administrative Boundaries
- Area of Equal Use and Occupancy
- Nunavut Settlement Area Boundary
- Inuit Owned Lands (Surface and Subsurface including minerals)
- Inuit Owned Lands (Surface excluding minerals)
- Established Parks (Land Use Plan does not apply)



For Data Sources see Draft Nunavut Land Use Plan (DNLUP).  
For Illustrative purposes only  
Projection: Canada Lambert Conformal Conic, NAD83  
North is up and follows gridlines  
Date: 20 Jun 2016  
Produced By: Nunavut Planning Commission

DRAFT

If a designation boundary appears to follow a geographic feature or property boundary, it follows that feature or boundary.