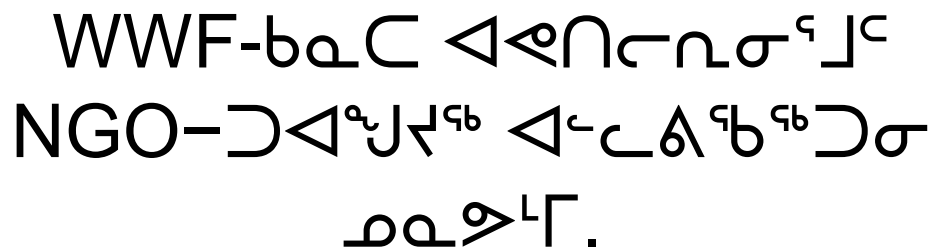


መግቢያው የሚገኝበት የግንባታ ስራ  
የግንባታ ስራው በግንባታ ስራ



WWF-ከፍተኛ  
የግንባታ ስራው  
በግንባታ ስራ



[illegible]



# WWF-ᑲᓄᑕ ᐅᑭᐅᑕᓐᑕᑦ

WWF-ᑲᓄᑕ ᐱᑦᑎᐸᓐᑕᓐᑕ ᐸᓇᑎᑦᑎᑦᑕ ᐸᓄᑕ ᐅᑭᐅᑕᓐᑕᑦ, ᐸᓄᑕ ᓐᑭᓐᑕᓐᑕᓐᑕ ᓐᑭᓐᑕᓐᑕᓐᑕ ᐱᓄᑕᓐᑕᓐᑕ ᐱᓄᑕᓐᑕᓐᑕᓐᑕ ᐸᓄᑕᓐᑕᓐᑕᓐᑕ ᐸᓄᑕᓐᑕᓐᑕᓐᑕ.

WWF-ᑲᓄᑕ ᐸᓐᑕᓐᑕᓐᑕᓐᑕᓐᑕ ᐸᓄᑕᓐᑕ, ᐸᓄᑕ ᐱᓄᑕᓐᑕᓐᑕᓐᑕᓐᑕ ᐸᓄᑕᓐᑕᓐᑕᓐᑕ ᐸᓄᑕᓐᑕᓐᑕᓐᑕ ᐸᓄᑕᓐᑕᓐᑕᓐᑕ.

ᐸᓄᑕ ᐸᓄᑕ, ᓐᑕᓐᑕᓐᑕᓐᑕᓐᑕ ᐸᓄᑕᓐᑕ WWF-ᑲᓄᑕᓐᑕ ᑲᑎᑕᓐᑕᓐᑕᓐᑕ, ᐸᓄᑕ ᐸᓄᑕ ᐸᓄᑕᓐᑕ, QWB-ᓐᑕᓐᑕ ᐸᓄᑕᓐᑕᓐᑕᓐᑕᓐᑕ ᑲᑎᑕᓐᑕᓐᑕᓐᑕᓐᑕ.



# WWF ᐊᐱᐤ ᓄᓇᓂᐱᐤ ᓄᓇᐃᐤ ᐊᐃᐱᐤ ᐃᐱᐤ ᐃᐱᐤ ᐃᐱᐤ ᐃᐱᐤ

ᐃᐱᐤ ᐃᐱᐤ ᐃᐱᐤ ᐃᐱᐤ ᐃᐱᐤ

- ᓄᓇᐃᐤ ᐃᐱᐤ ᐃᐱᐤ
- ᐃᐱᐤ ᐃᐱᐤ ᐃᐱᐤ ᐃᐱᐤ ᐃᐱᐤ
- ᐃᐱᐤ ᐃᐱᐤ ᐃᐱᐤ
- ᐃᐱᐤ ᐃᐱᐤ ᐃᐱᐤ
- ᐃᐱᐤ ᐃᐱᐤ ᐃᐱᐤ



# ዴሞክራሲ በፖለቲካ

ዴሞክራሲ በፖለቲካ በበጥንቃቄነት

ዴሞክራሲ ለጥንቃቄነት ለጥንቃቄነት  
በፖለቲካው ውስጥ.

ፋክታሪ በበጥንቃቄነት ለፋክታሪ  
ዴሞክራሲ ለፖለቲካው ውስጥ.

ፋክታሪ ለፖለቲካው ውስጥ ለፋክታሪ (NTI ፋክታሪ  
RIAs, QWB ፋክታሪ GN) ፋክታሪ ለፖለቲካው ውስጥ  
ፋክታሪ ለፖለቲካው ውስጥ.

[illegible]

မေ့ရန် ချစ်စဖွယ် ပုံငါးငါးချပ်တို့ကို မှတ်ဉာဏ်ထဲသို့ ထည့်သွင်းထားပါ။  
အမှတ်တံဆိပ်များကို အောက်တွင် တွေ့ရှိရပါသည်။

[illegible]



# ዴሞክራሲ በፖለቲካ ልማት

## አጋር ያልሆነ ልማት

ዴሞክራሲ በፖለቲካ ልማት ይገኛል። ለዚህ ምሳሌ ለሚያስፈልጉት  
ሰነድ ማረጋገጫ ለሚያስፈልጉት ሰነድ ማረጋገጫ  
ዴሞክራሲ ለሚያስፈልጉት ሰነድ ማረጋገጫ  
ፖለቲካ ልማት ለሚያስፈልጉት ሰነድ ማረጋገጫ  
ሰነድ ማረጋገጫ ለሚያስፈልጉት ሰነድ ማረጋገጫ  
ሰነድ ማረጋገጫ ለሚያስፈልጉት ሰነድ ማረጋገጫ.

[illegible][illegible]

$\wedge \triangleright^{\text{qb}} \neg \triangleleft^{\text{q}} \neg \triangleright \triangleleft^{\text{qb}} \triangleleft \triangleright^{\text{qb}} \neg \triangleleft \triangleright^{\text{qb}} \wedge^{\text{qb}} \neg \triangleright \neg \neg \neg^{\text{qb}} \triangleright^{\text{qb}} \neg \triangleright \neg \neg \triangleright \sigma^{\text{q}} \neg^{\text{c}}$   
 $\triangleright^{\text{c}} \triangleright \triangleleft^{\text{c}} \neg^{\text{q}} \neg^{\text{q}} \neg \triangleright^{\text{q}} \triangleleft \triangleright^{\text{qb}} \sigma^{\text{q}} \neg^{\text{c}}, \triangleleft^{\text{q}} \neg \sigma^{\text{qb}} \neg \triangleright \neg^{\text{c}}.$



[illegible]



$\dot{C}^a_{\mu}\partial^{\mu}\varphi^{ab}\dot{D}^b_{\nu}\dot{\Delta}^L{}^{\nu}{}_{\sigma}\dot{Z}^a\dot{\sigma}^c.$

NIRB ▷ ႁᆞᆫ ႁᆞᆫ ႁᆞᆫ ႁᆞᆫ:

[illegible]

(Λ7▷ꝛ<sup>c</sup> NIRB-d<sup>c</sup> ΔꝛL<sub>c</sub>▷σ<sup>c</sup>Ꝛ<sup>c</sup>▷σ<sup>ḃ</sup><sub>c</sub> 11EN046: Anconia's Victory Lake Area Λ<sub>c</sub>η<sub>c</sub>◁Ꝛ<sup>c</sup>)

[illegible][illegible]



$\Delta^{\mathfrak{a}}\Gamma^{\mathfrak{b}}\mathfrak{a}^{\mathfrak{c}}\mathfrak{c}^{\mathfrak{b}}\mathfrak{c}^{\mathfrak{c}} \leq \Gamma^{\mathfrak{a}}\Gamma^{\mathfrak{b}}\mathfrak{a}^{\mathfrak{c}}\mathfrak{c}^{\mathfrak{b}}\mathfrak{c}^{\mathfrak{c}} \leq \Delta^{\mathfrak{a}}\Gamma^{\mathfrak{b}}\mathfrak{a}^{\mathfrak{c}}\mathfrak{c}^{\mathfrak{b}}\mathfrak{c}^{\mathfrak{c}}$   
 $\leq \Gamma^{\mathfrak{a}}\Gamma^{\mathfrak{b}}\mathfrak{a}^{\mathfrak{c}}\mathfrak{c}^{\mathfrak{b}}\mathfrak{c}^{\mathfrak{c}} \leq \Delta^{\mathfrak{a}}\Gamma^{\mathfrak{b}}\mathfrak{a}^{\mathfrak{c}}\mathfrak{c}^{\mathfrak{b}}\mathfrak{c}^{\mathfrak{c}}$

$\Lambda^{\vee} \cap \Gamma^{\vee} \supset \dot{L}^{\vee} \supset \Gamma^{\vee}$  ን  $\dot{L}^{\vee} \cap \Gamma^{\vee} \supset \dot{L}^{\vee} \cap \Gamma^{\vee}$   
 $\supset \Gamma^{\vee}$ ,  $\dot{L}^{\vee} \cap \Gamma^{\vee} \supset \dot{L}^{\vee} \cap \Gamma^{\vee}$   
 $\supset \Gamma^{\vee}$  ን  $\dot{L}^{\vee} \cap \Gamma^{\vee} \supset \dot{L}^{\vee} \cap \Gamma^{\vee}$ .



**⚡️ ⚡️ ⚡️ ⚡️ ⚡️ ⚡️**

[illegible]



**⚡️ ⚙️ ⏪ ⏩ 🔍**

[illegible]

[illegible]

[illegible][illegible]



[illegible][illegible][illegible]

[illegible][illegible][illegible]

[illegible][illegible]

[illegible]



▷▷▷<sup>9</sup>▷▷▷<sup>9b</sup>

[illegible][illegible][illegible]



▷▷▷▷▷▷▷▷▷▷

[illegible]

ከዚህ በፊት ለሚገኝ ስሜት ለሚገኝ ስሜት  
 ለሚገኝ ስሜት ለሚገኝ ስሜት ለሚገኝ ስሜት  
 ለሚገኝ ስሜት ለሚገኝ ስሜት ለሚገኝ ስሜት  
 ለሚገኝ ስሜት ለሚገኝ ስሜት ለሚገኝ ስሜት  
 ለሚገኝ ስሜት ለሚገኝ ስሜት ለሚገኝ ስሜት

[illegible]

[illegible]





٢٠٢٤

[illegible]

ደጋፊ ልማት ምክር ቤቱ የሚገኝበት የፍትሕ ምክር ቤቱ  
 ለሕግ አፈጻጸም ምክር ቤቱ ለሕግ አፈጻጸም ምክር ቤቱ  
 ለሕግ አፈጻጸም ምክር ቤቱ ለሕግ አፈጻጸም ምክር ቤቱ  
 የሕግ አፈጻጸም ምክር ቤቱ ለሕግ አፈጻጸም ምክር ቤቱ  
 ለሕግ አፈጻጸም ምክር ቤቱ ለሕግ አፈጻጸም ምክር ቤቱ  
 ለሕግ አፈጻጸም ምክር ቤቱ ለሕግ አፈጻጸም ምክር ቤቱ

[illegible]



ᑭᓄᓐᓂᓐ