

NUNAVUT PLANNING COMMISSION
PUBLIC HEARING ON THE 2016 DRAFT NUNAVUT LAND USE PLAN

Hamlet of Pond Inlet

PRE-HEARING WRITTEN SUBMISSIONS

Filed by: Nicole Monchamp
Hamlet of Pond Inlet
February 27, 2017

TABLE OF CONTENTS

Contents

1	Background and Objectives	3
2	General Comments and Recommendations.....	3
2.1	Overall structure and clarity of the DNLUP;.....	Error! Bookmark not defined.
2.2	Consistency with the applicable legal requirements and policy context;	Error! Bookmark not defined.
2.3	Fit with the integrated regulatory system;	Error! Bookmark not defined.
2.4	Quality of the planning process;	Error! Bookmark not defined.
2.5	Incorporation of input from participants in the planning process;	Error! Bookmark not defined.
2.6	Overall balance among competing interests on important issues;	Error! Bookmark not defined.
2.7	Governance and implementation;	Error! Bookmark not defined.
2.8	Other.....	Error! Bookmark not defined.
3	Specific Comments and Recommendations	3
3.1	[Issue #1]	Error! Bookmark not defined.
3.1.1	Reference in DNLUP	Error! Bookmark not defined.
3.1.2	Comment.....	Error! Bookmark not defined.
3.1.3	Recommendation(s).....	Error! Bookmark not defined.
3.1.4	Rationale	Error! Bookmark not defined.
3.1.5	Note(s).....	Error! Bookmark not defined.
3.1.6	Supporting Material	Error! Bookmark not defined.
3.2	[Issue #2]	Error! Bookmark not defined.
3.2.1	Error! Bookmark not defined.
4	Editorial Recommendations and Considerations.....	4

Hamlet of Pond Inlet
Submission for the Public Hearing on the 2016 Draft Nunavut Land Use
Plan

2/17/2017

1 Background and Objectives

The Hamlet of Pond Inlet is a community of roughly 1600 people of whom more than 95% are Lands Claim Beneficiaries.

Traditional culture and language are alive and well in our community and the ability to access areas for hunting, fishing, and other activities is vital.

In addition to the traditional harvesting and cultural activities our community is dependent on a large water shed area to provide us with potable water.

2 General Comments and Recommendations

The Draft Nunavut Land Use Plan is being developed to ensure that future land uses are compatible with the Inuit People. Stewardship of the land, animals, and resources are of vital importance to the residents here.

This land is not just a place they live it is part of their bones. The wildlife are members of our communities part of the ebb and flow of the seasons.

In keeping with the importance the surrounding area holds for our people we are requesting special consideration for areas which encompass traditional hunting grounds and cultural activities such as stone quarries and which contain the water shed for our community.

3 Specific Comments and Recommendations

Observations on issues where the submission includes more detailed comments, analysis and specific recommended changes to the DNLUP, organized as follows:

3.1 Water Shed Protection for the Hamlet of Pond Inlet

3.1.1 Under Healthier Communities Goal Number 4 the DNLUP references planning to protect watersheds providing drinking water to communities.

Page Number 26 Section 1.3 Goal 4.

3.1.2 In order to ensure a safe water supply for our community in the present and into the future the Hamlet of Pond Inlet has collected information and had a map prepared to outline the area which needs to be designated an area of interest and given protection.

The map and report are attached to this submission.

3.2 Traditional Uses of and access to the Land

- 3.2.1 In consultation with the H.T.O. the Hamlet Council has prepared a map which outlines the area containing all of the traditional harvesting areas, quarries for soapstone, and cultural sites important to the residents of Pond Inlet.
- 3.2.2 Under Section 4.1 – Areas Identified by Communities the Hamlet is asking to have the area designated on the attached map set as a Community Area of Interest to protect the Harvesting and Heritage uses of this land.

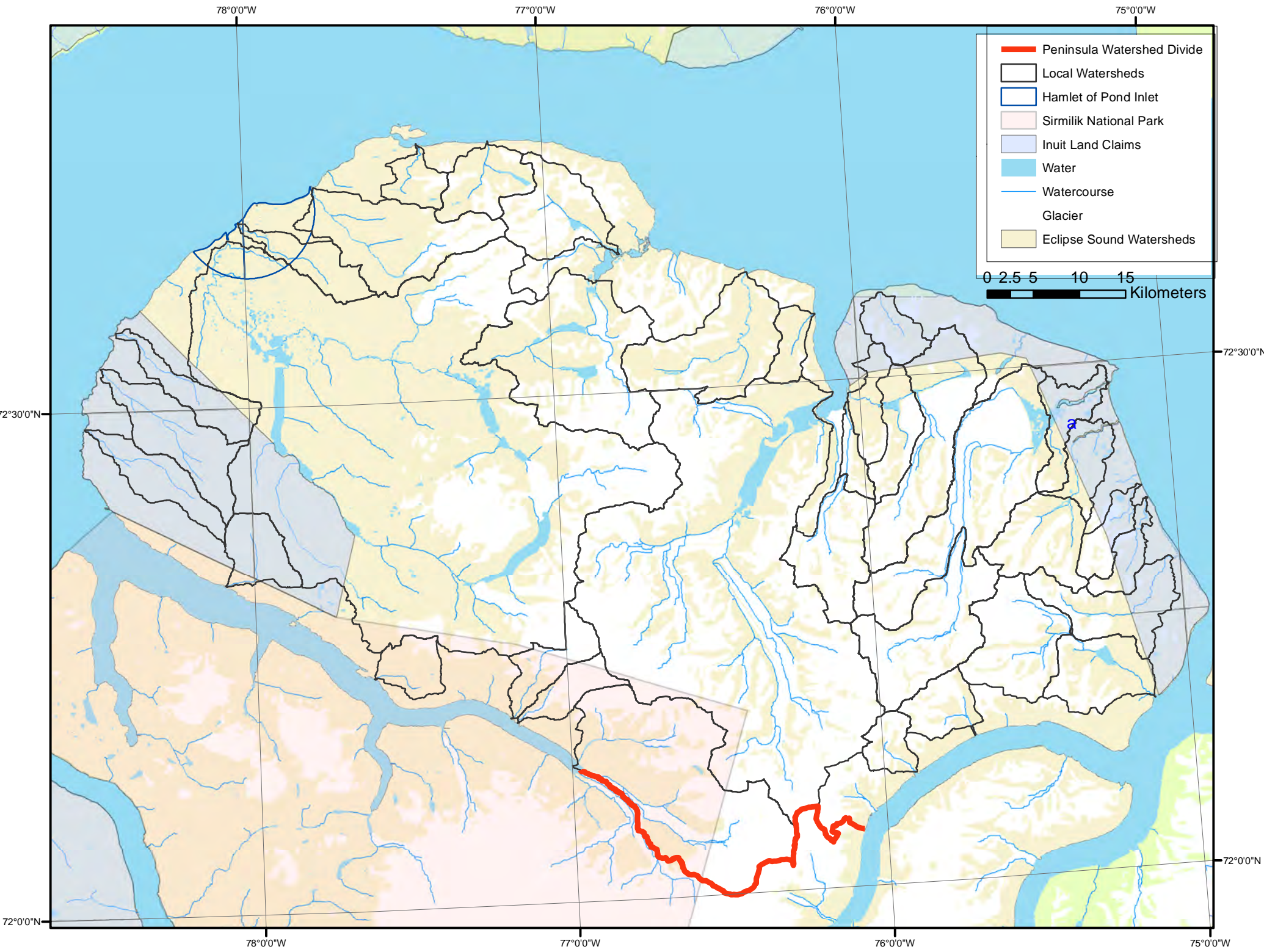
3.3 Community Land Use

- 3.3.1 In consultation with the H.T.O. the Hamlet Council has prepared a map which outlines the areas of importance to maintaining and managing natural resources on the land..
- 3.3.2 Under Section 4.1 – Areas Identified by Communities the Hamlet is asking to have the area designated on the attached map set as a Community Land Use Area to protect and manage the use of the wildlife and Herbage for current and future generations.

4 Editorial Recommendations and Considerations

After Reading the DNLUP the following areas need to be clarified:

Page #	Description, Recommendation and Rationale
P. 60	<p><u>Section 7. Annex C: Compendium of NPC's Recommendation in the Nunavut Land Use Plan.</u></p> <p>Recommendation – Item 7 . If identification of the polluter is not possible the NPC recommends the Regulatory Authorities that had responsibility for the site at the time it was active shall be responsible for remediation of the Waste Site."</p> <p>Rationale for change – This Item could make small municipalities responsible for cleaning up waste sites from other jurisdictions or entities simply because they are the legislative authority and a clear line of responsibility is not available.</p> <p>This item needs to be changed to protect communities from potentially ruinous expenses in having to clean up contaminated sites they did not have anything to do with.</p> <p>.</p>
P. 60	<p><u>Section 7. Annex C: Compendium of NPC's Recommendation in the Nunavut Land Use Plan.</u></p> <p>Recommendation – Item 8 . The NPC recommends Government provide additional funding to the NPC and NIRB to co-lead strategic environmental assessments in areas considered to have high mineral potential.</p> <p>Rationale for change – This Item should contain a recommendation for funding for Municipal Contaminated sites (landfills, lagoons, shops, airports, etc.) as well as funding for private mining interests.</p>





**Department of Geography
& Environmental Studies**
Faculty of Arts

February 15, 2017

Hamlet of Pond Inlet
PO Box 180
Pond Inlet, NU
X0A 0S0

Re: Watershed Based Land-use Planning for the Hamlet of Pond Inlet

To the SAO and Lands Office of the Hamlet of Pond Inlet:

First, I would like to thank you for allowing our research team to use of the SAR boardroom in-kind for our Water for Life research project meetings during my visit to Pond Inlet (Feb 1-8). I also apologize for the delay in getting these maps too you.

As discussed during my visit I have produce two maps that outline the watersheds that surround the Hamlet. Below is a written description regarding a Watershed Based Approach to Land Use Planning and a description of the two maps and what they represent. Please feel free to use the below text in what ever way you need. I have also attached the maps as 8 ½ x 11" PDF files. Please review them and let me know if there are any changes that would like made to them. If you require more detail, information, or have any questions please feel free to contact me. If you require the spatial data that was used to produce the maps I can also provide that upon request. The maps were produced in ArcGIS. Additionally, please feel free to contact me if you require future assistance in producing or working with any spatial or environmental data. I look forward to getting to know the Hamlet better though my growing research relationship with members of the community.

Sincerely

Dr. Dave M. Atkinson, PhD
Associate Professor
Department of Geography and Environmental Studies
Ryerson University

A watershed is an area of land that catches all of the water that comes from snow, ice, and rain. All of the water within a watershed eventually flows to a common place, be it pond, lake, river, or the ocean. Watersheds are defined by the shape of the land, with the divide between one watershed and another being a ridge of land that separates the direction of the water flow. Water is crucial to the life and health of people and the ecosystems that surround us. Watersheds are comprised of living and non-living components that are linked together by the water that moves within the watershed. The land and the oceans are linked by the flow of the water from watersheds into the ocean. Understanding the watersheds includes understanding the natural processes that occur within them. Watersheds provide communities with their drinking water, be it from the tap or collected from the land, they also provide the water needed for development and industry. Watersheds sustain life, and for this reason proper watershed protection and management is required for true sustainability.

Water is a crucial resource that integrates ecosystem processes. The distribution of vegetation, the development and movement of nutrients, processes of erosion and deposition, and many other ecosystem functions and processes are dependant on water and its movement through the watershed. Additionally, the movement of water from the land into the oceans is crucial for the health and sustainability of marine ecosystems and land-based water moves crucial nutrients, and biomass from the land and into the oceans. These watersheds can also be pathways for contamination and pollutants if not managed properly.

A watershed-based approach to land use planning has been adopted by environmental agencies across Canada and the United States. With water being such an important link between ecosystems, people, and industry, rooting land use planning decisions within the context of a watershed creates a process based on sustainability.

Watershed planning uses tangible management units (the watershed) that people understand and can visualize. This planning concept provides a context for integration that allows for a focus and coordinated effort to find common ground to meet the needs of multiple stakeholders. This is a sustainable approach to planning that generates evidence-based decisions that have a foundation in the local ecology and health of the watershed.

For the Hamlet of Pond Inlet two maps have been produced, a local watershed map, and a broader regional map. At the local scale, the watersheds that surround the Hamlet are the source of for the current local municipal drinking water, and for any future growth. Additionally, the people of the Hamlet gather a large portion of their drinking water directly from natural sources, such as local streams, rivers, ice, snow, icebergs, and sea ice. The health of these local watersheds are crucial to the sustainability and health of the community.

The local watershed map, illustrates all of the local watersheds on the peninsula of which Pond Inlet is located. The watershed divide for this peninsula is defined on this map, and delineates the ridge of land and glacial ice that separates water movement on the peninsula and into Baffin Bay and Eclipse Sound and water that flow south.

The second map, the regional watershed map, illustrates all of the watersheds that connect to Eclipse Sound. These watersheds are not only important to the Hamlet of Pond Inlet, as they are the traditional lands of Inuit, but they are also the watersheds in which the people from the Hamlet hunt, fish, and camp throughout the year. These watersheds contain the ecosystems that provide the hamlet with local vegetation, game, fish, and drinking water. The watersheds that flow into Eclipse Sound are also crucial to the Marine ecosystems. These watersheds provide the nutrients and biomass that are crucial to a healthy marine ecosystem that supports healthy marine mammal and fish populations.

Dr. Dave M. Atkinson,

[illegible][illegible][illegible][illegible][illegible][illegible][illegible]

[illegible]

መደብ በኢኮኖሚክስ በበረከት ልማት

$$-C_{nD} \Delta L^{\epsilon_b} \Delta \delta^b C_{D/L} \sigma^{\epsilon_b}$$
$$-\Delta L^{\epsilon b \Delta b}$$

-H4Lc_d rNLCc^b

— ୨୮୮ —

-Δ₀Δ^c mal

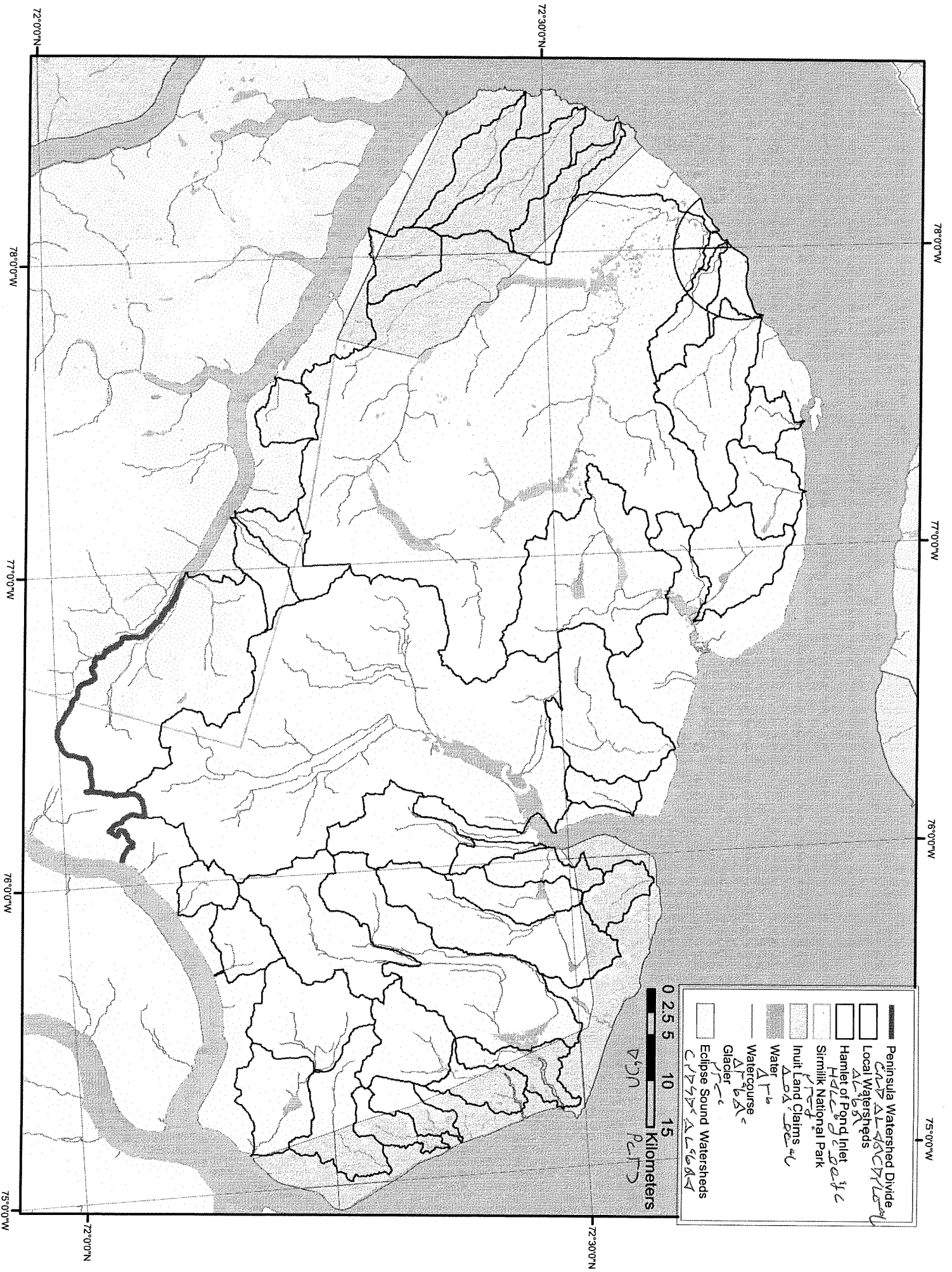
-ΔLΓ9b

-ΔLΓ⁵bΔ^b

— ۲۹۷ —

-C/D/L/D/L ΔL⁹bΔ⁹U

כַּלְפָּן חִכָּבִי



78°00'N

77°00'N

76°00'N

75°00'N

72°00'N

73°00'N

72°30'N

72°00'N

79°00'W

78°00'W

77°00'W

76°00'W

78°00'W

77°00'W

76°00'W

75°00'W

0 2.5 5 10 15 Kilometers

CNP PCT

- Peninsula Watershed Divide
- Local Watersheds
- Hamlet of Pond Inlet
- Sirmilik National Park
- Inuit Land Claims
- Water
- Watercourse
- Glacier
- Eclipse Sound Watersheds

HLE by 2011

