

ᐃᓄᓐᓂᓐ

Milne Port



**LEGEND:**

- COMMUNITY
- MILNE INLET TOTE ROAD
- PROPOSED INFRASTRUCTURE
- POTENTIAL DEVELOPMENT AREA
- QIA COMMERCIAL LEASE BOUNDARY
- WATER
- AGGREGATE SOURCE (BORROW PIT)
- AGGREGATE SOURCE (QUARRY)

**NOTES:**

1. BASE MAP: © ESRI DATA AND MAPS (ONLINE) (2016). REDLANDS, CA:  
ENVIRONMENTAL SYSTEMS RESEARCH INSTITUTE. ALL RIGHTS RESERVED.

2. MILNE PORT INFRASTRUCTURE PROVIDED BY HATCH, AUGUST 2, 2016.

PROJECTION: NAD 1983 UTM ZONE 17N  
SAVED: I:\102\00181\39\A\GIS\Figs\PresentationFigs\R28\_r0.mxd

**LEGEND:**

- COMMUNITY
- MILNE INLET TOTE ROAD
- PROPOSED NORTH RAILWAY
- ADDITIONAL PHASE 2 INFRASTRUCTURE
- WATER
- PDA / QIA COMMERCIAL LEASE
- REVISED PDA FOR PHASE 2 PROPOSAL
- INAC FORESHORE LEASE

**NOTES:**

1. BASE MAP: DETAILED TOPOGRAPHY BY EAGLE MAPPING (2005).
2. MILNE PORT INFRASTRUCTURE PROVIDED BY HATCH, JANUARY 25, 2017.
3. FIGURE CREATED BY KNIGHT PIESOLD LTD.

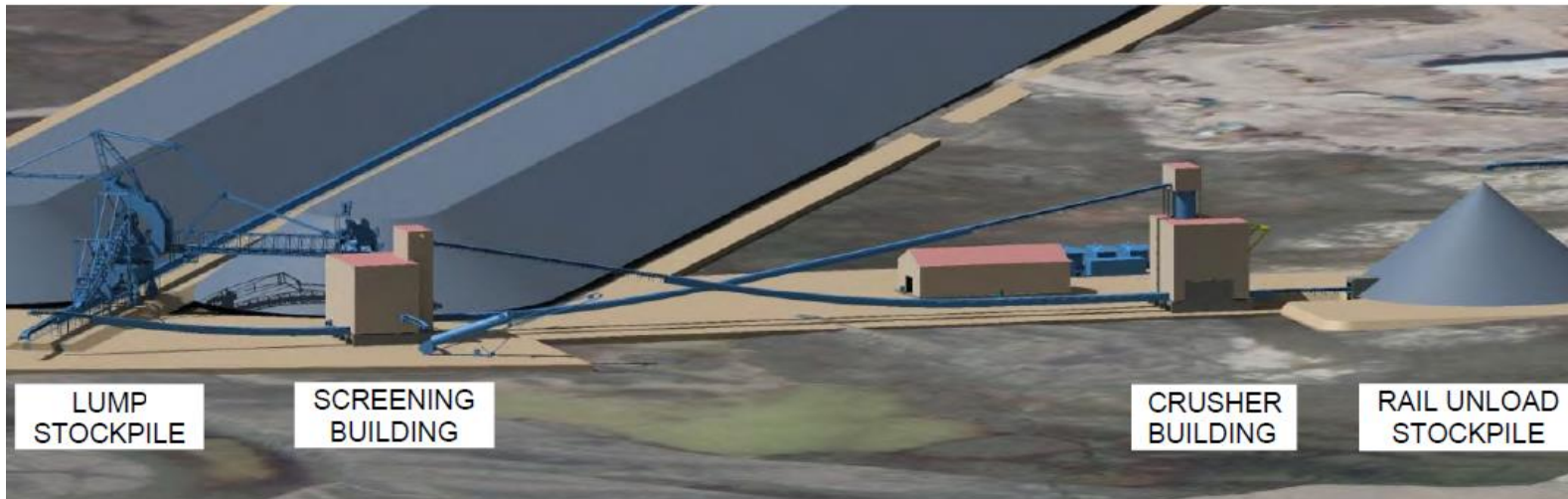
PROJECTION: NAD 1983 UTM ZONE 17N  
 SAVED: I:\102\0018139\GIS\Figs\Presentation\Figs\R21\_r0.mxd

## ፖርታጋልኛ ካሪቦኒየም

- ፊኖታል ስራዎች ለፖርታጋልኛ ካሪቦኒየም
- ለፊኖታል ስራዎች ፖርታጋልኛ ካሪቦኒየም
- ለፊኖታል ስራዎች ፖርታጋልኛ ካሪቦኒየም
- ለፊኖታል ስራዎች ፖርታጋልኛ ካሪቦኒየም

## Crushing of iron ore

- Move from Mine site to Milne Port
- Indoor crushing of iron ore
- Less dust in the environment
- Stable temperatures for equipment and employees



# Supporting infrastructure

- Additional laydown areas for stockpile
- Second temporary barge landing
- Rail maintenance facility:
  - Management offices
  - Repair areas
  - Maintenance shop
  - General storage
  - Railway maintenance yard



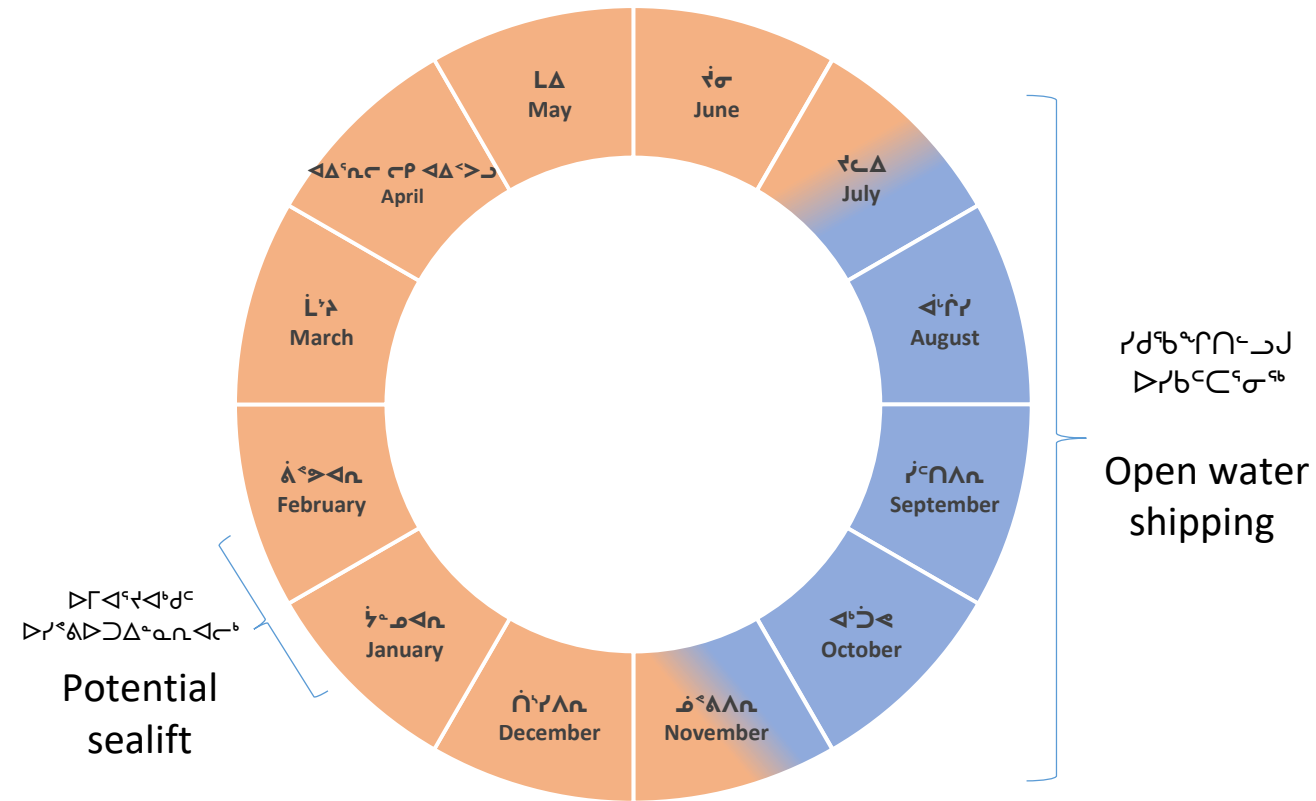
ΔΙΥΨΕΥΣΗ



Marine Shipping

▷ ႵႶႷႸႹႺႻ ႼႽႾႿႸႹႺႻ

# Shipping schedule

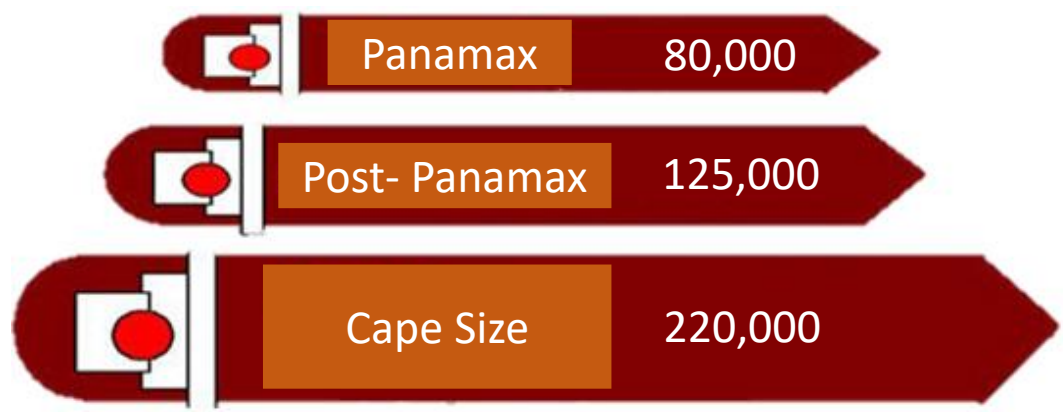


- ሥራዎችን በጥሩ ሁኔታ ለማግኘት ለሚገባው ስጦታ ማቅረብ
- ለሥራዎች ማቅረብ ለሚገባው ስጦታ ማቅረብ
  - ለሥራዎች ማቅረብ ለሚገባው ስጦታ ማቅረብ
- Shipping during the open water season is possible by using larger ore carriers
- Increase in number of vessels
  - Up to two ship transits per day



# ᐅᐅᐅᐅᐅᐅᐅ ᐅᐅᐅᐅᐅᐅᐅ

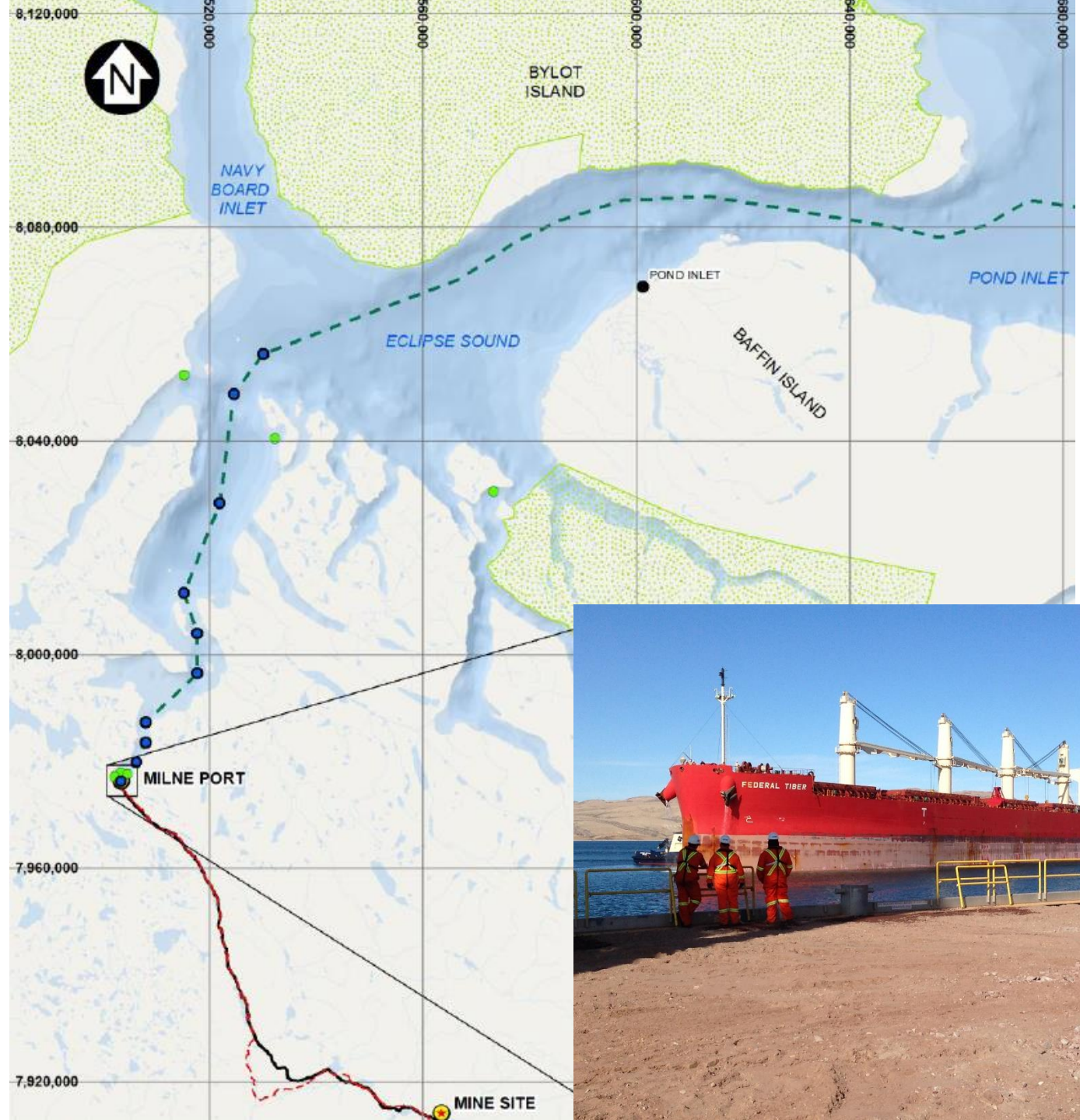
# Vessel size



Shipping route

[illegible]

Shipping route will remain the same:  
route through eclipse sound





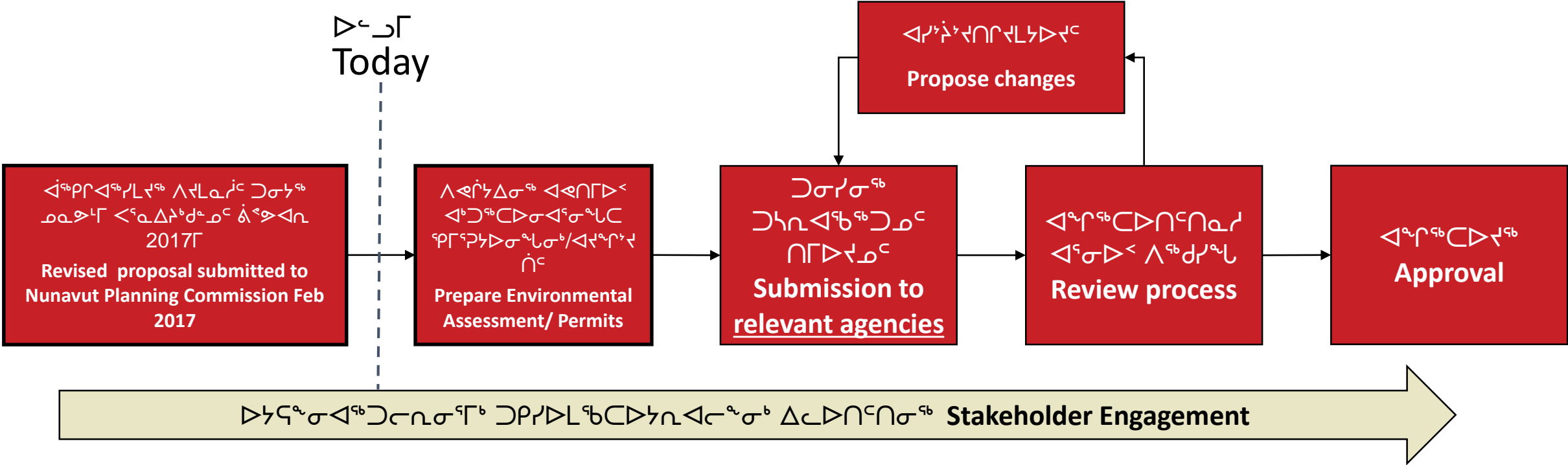
$\triangle^{\circ} \rho^{\epsilon_b} C D E^{\circ} r \Delta \sigma \triangleright <$

$\dot{\triangle}^{\epsilon_b} \rho^b \gamma L \sigma^{\alpha} j$

# Approval Process

# Λττσ<sup>ᑭᑦ</sup> 2 ᐃᓄᑦᑭᑦᑕᐅᐃᑦᐅᐅᑦᑭᑦᑕ ᐃᓄᑦᑭᑦᑕᐅᐅᑦᑭᑦᑕ

## Phase 2 approval process





መደምደብ ልዩነት

Community Benefits



Δεῖν

1.  $b \neq d \Rightarrow b \neq c \wedge c \neq d \Rightarrow b \neq a$
2.  $\Delta b \Delta c \Rightarrow d \neq e \wedge e \neq f$
3.  $\Delta c \Delta d \wedge \Delta e \Delta f \Rightarrow d \neq e \wedge e \neq f$
4.  $\Delta e \Delta f \wedge \Delta g \Delta h \Rightarrow e \neq f \wedge g \neq h$



# Benefits

1. Continued Economic Input to North Baffin
2. Overall increase in employment
3. Commitment to Inuit training
4. Opportunities for Inuit firms





# Economic Inputs to North Baffin

- In 2016, Baffinland contributed \$2.4 million to the QIA through the Mary River Project Impact Benefit Agreement for funding on:
  - Education and Training
  - Scholarships
  - Business Capacity and Start-up
  - Wildlife Compensation
  - Ilagiiktunut Nunalinnullu Pivalliajutisait Kiinaujat Fund

# Economic Inputs to North Baffin

- In addition, the IIBA also provides for Inuit financial participation in the Project through Advance Payments and Royalties
- Baffinland contributed to 24% of the revenue from fuel taxation to the Government of Nunavut
- Baffinland contributes directly to the communities through scholarships, donations to community events and activities, time of employees to engage in community initiatives and more broadly increased access to region



Δ<sub>μ</sub>Δ<sup>c</sup> Δ<sup>qb</sup>b<sub>q</sub>Δ<sup>qb</sup>Δ<sup>c</sup>

[illegible]

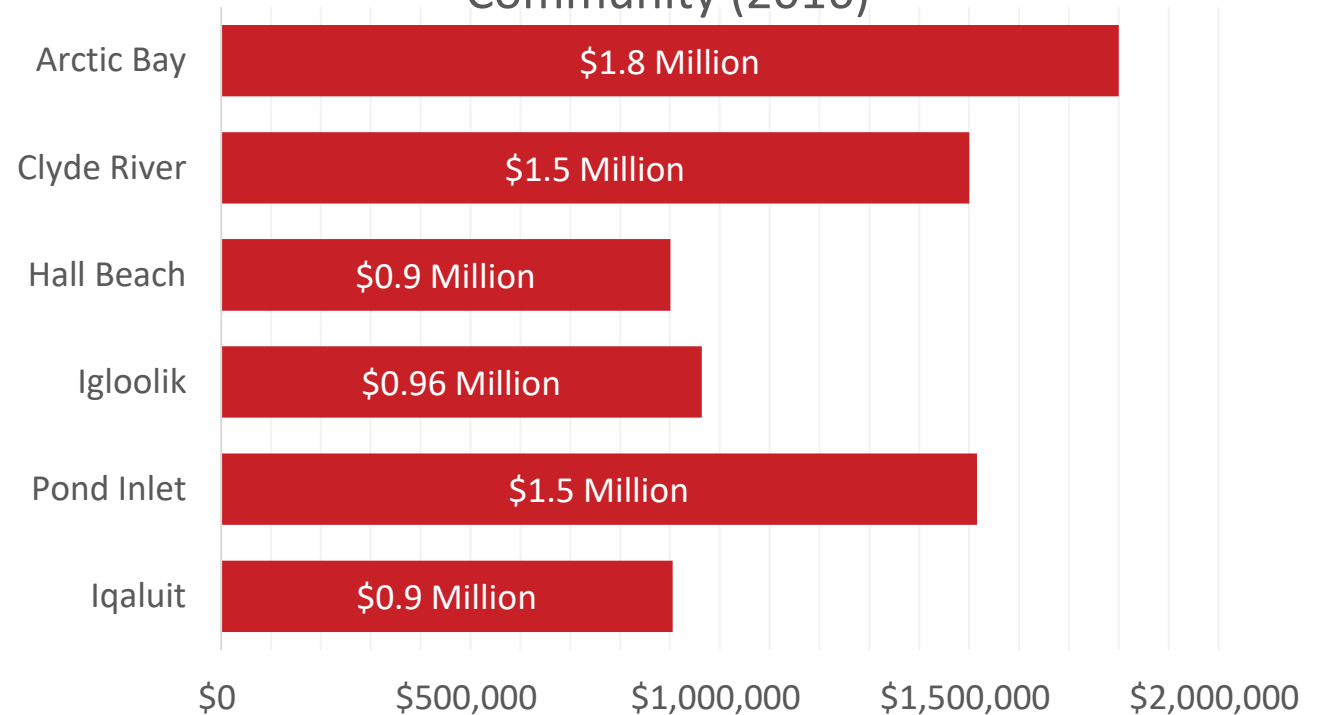
\*In 2016, nearly \$8 million was spent on Baffinland's Inuit employee payroll

\*2016-ፖ ልክፍልነግር ልክፍላግር ልክፍላግር  
ለሥራ ልክፍልነግር 16.3-ግሥ ልክፍላግር ልክፍላግር 97-ግሥ  
ልክፍላግር ልክፍላግር ልክፍላግር ልክፍላግር ልክፍላግር 65-ግሥ  
ልክፍላግር ልክፍላግር ልክፍላግር (162 ልክፍላግር  
ልክፍላግር)

\*In 2016, 16.3% of the total number of hours worked on the Project were completed by 97 Inuit Baffinland employees and 65 Inuit Contract employees (162 Inuit employees)

# Inuit employment

## Baffinland Inuit Employee Payroll, by Community (2016)









## Δμμϵ αλΓσνλνΔνϵ ΔνΔσμϵϵ

## Inuit firm involvement

Δμμϵ αλΓσνλνΔνϵ βϵΔνϵ  
ΔσνΔνΔνϵ 2016-Γ  
αμϵνΔνΔνϵ \$64.4 Γϵνϵ.

The total value of contracts  
awarded to Inuit Firms in 2016  
was \$64.4 million.

Δμμϵ αλΓσνλνΔνϵ βϵΔνϵ  
ΔσνΔνΔνϵ αμϵνΔνΔνϵ 38%  
→νΓν 2017 Γμϵμϵνϵνϵνϵ  
νϵνϵνϵνϵ

The percentage of contracts  
awarded to Inuit Firms has  
increased to 38% in Q1 2017

2016

2017

2018



# Major contracts with Inuit firms



# What Now?

- † We need your support!
- † We need your feedback:
  - Comment Cards
  - Verbal Comments
  - Facebook
    - (<https://www.facebook.com/BaffinlandIronMines>)
  - Baffinland Community Liaison Officer
- † Next Steps:
  - Nunavut Planning Commission - Land Use Plan
  - Nunavut Impact Review Board – Environmental Impact Statement
  - Nunavut Water Board – Type A Water Licence
  - Canadian Transportation Agency – Rail Permit
- † Schedule:
  - Submit for NIRB approval September 2017 (tentative)
  - Start construction August 2018 (tentative)



¿ᐱᑦᐃᑦ?

Questions?

37



# Questions?