

Summary of Community Meetings on the
Draft Nunavut Land Use Plan
ARCTIC BAY
November 1-2, 2012



Revised - August 2013

Contents

Introduction	3	Appendix 1: Open House	17
1.1 Context	3	Appendix 2: Elected Officials Meeting	18
1.2 Purpose.....	3	Appendix 3: Questions and Answers.....	19
1.3 Methodology.....	3	Appendix 4: Community Workshop Scanned Maps	20
1.4 Public Awareness	3	Appendix 5: Follow-up Meeting	36
1.5 Community Population and Participation.....	3		
 Protecting and Sustaining the Environment	4		
2.1 Areas presented to participants.....	4		
2.2 Areas identified by participants.....	4		
2.3 Areas of importance to Protecting and Sustaining the Environment..	4		
 Encouraging Conservation Planning	6		
3.1 Areas presented to participants	6		
3.2 Areas identified by participants.....	6		
3.3 Areas of importance to Encouraging Conservation Planning	6		
 Building Healthier Communities	8		
4.1 Areas presented to participants.....	8		
4.2 Areas identified by participants.....	8		
4.3 Areas of importance to Building Healthier Communities	8		
 Encouraging Sustainable Economic Development	10		
5.1 Areas presented to participants.....	10		
5.2 Areas identified by participants.....	10		
5.3 Areas of importance to Encouraging Sustainable Economic Development	10		
 Mixed Use.....	12		
6.1 Areas identified in the Draft Plan	12		
6.2 Areas identified by participants	12		
 Overlapping Goals.....	15		
7.1 Areas identified for multiple goals	15		

Chapter 1: Introduction

1.1 Context

The Nunavut Planning Commission (NPC) is preparing a land use plan to guide and direct resource use and development in the Nunavut Settlement Area (NSA). As part of its efforts, the NPC is facilitating discussions in each Nunavut community on land use and resource management issues. Information that is obtained from these discussions will be used to inform decisions regarding the further development of the Nunavut Land Use Plan (NLUP).

1.2 Purpose

This report presents information obtained during the NPC's visit to the community of Arctic Bay. The purpose of the report is to inform decisions regarding the further development of the NLUP, ensuring that the plan reflects the priorities and values of residents.

It is important to note that the information contained in the Community Report will be considered in conjunction with all other feedback when revising the DNLUP.

1.3 Methodology

Information was presented to and received from participants in Arctic Bay in accordance with the Nunavut Planning Commission's Community Engagement Strategy (Engagement Strategy). The Engagement Strategy provides for the following methods for presenting and receiving information;

- **Open house;** information contained in the Draft Nunavut Land Use Plan (DNLUP) was presented on 7 multi lingual large format poster boards. Participants were encouraged to review the posters, ask questions and provide feedback. Comments and questions were recorded by NPC staff and are contained in Appendix 1.
- **Elected Officials Meeting;** The NPC Chairperson and NPC staff met with senior and elected officials in the community. The development process for the DNLUP, its content and next steps were presented.

Comments and questions were recorded during the session and are contained in Appendix 2.

- **Public Workshop;** A formal presentation of the Draft Plan content was provided to participants, including a slide overview of its content. Following the presentation, questions and comments were received from participants. The questions, comments and responses are contained in Appendix 3.

A mapping session followed the presentation of the Draft Plan. The mapping session involved discussions regarding the topics presented in the DNLUP and encouraged participants to identify additional areas and issues important for inclusion in a NLUP. Information received during this session was recorded by NPC staff and is included in Appendix 4.

- **Wrap Up Session;** Staff was available to discuss the areas identified during the mapping and identify any additional issues or areas of interest.

Areas that participants identified during mapping sessions as important to a particular goal have, in the majority of cases, been included in this report as they were recorded. In instances where participants identified an area that was better suited to another goal, the area has been reclassified to the more suitable goal and has been verified as appropriate to do so by the Community.

A follow-up meeting was held on May 30, 2013 to review a draft version of this report with the Hamlet Council, Hunters and Trappers Organization, and Community Lands and Resource Committee. A summary of this meeting is included in Appendix 5.

1.4 Public Awareness

The NPC raised public awareness regarding its visit to Arctic Bay in accordance with the Engagement Strategy.

The DNLUP and supporting materials were mailed to the Mayor and Council of Arctic Bay, the Hunters and Trappers Organizations (HTO) in September 2012. In addition, letters of invitation were sent to the Arctic Bay Mayor and Council and

HTO in advance of the NPC's visit to advise of the meetings and to encourage participation. Follow up phone calls were also made.

Public notice of the various events was provided in the following ways:

- **Nunatsiaq News and Nunavut News/North;** notice of community meetings were posted in both newspapers a minimum of 45 days in advance.
- **Co-op cable TV;** notice of community meetings was run a minimum of 45 days in advance for one week and run again for no less than 14 days before the meetings.
- **Community radio;** notices were read by the hosts and a live interview with the Commission Chairperson was conducted.
- **Community bulletin boards;** notices were posted on bulletin boards around the community 45 days and again 14 days in advance of the meetings.
- **Community mail drop;** one page flyers that announced the meetings and their purpose were delivered to the post office in each community for all mail boxes that accept unaddressed ad-mail.
- **nunavut.ca;** the schedule of community visits, the Draft Plan, and all supporting information was available on the Commission's website.

1.5 Community Population and Participation

Arctic Bay is a community of approximately 825 people (Statistics Canada. 2011 Census). It is located on the northern coast of Baffin Island (see Figure 1).

The Commission visited the community on November 1-2, 2012. All events occurred as scheduled. The sessions were attended as follows;

- **Elected Officials Meeting;** the Mayor and members of the Hamlet Council and HTO attended the elected officials meeting.
- **Open house;** approximately 45 people attended the open house to review the Draft Plan.
- **Public Workshop;** approximately 65 people attended the presentation of the DNLUP and facilitated mapping sessions. Information was recorded in three separate mapping groups.
- **Wrap Up Session;** approximately 10 people attended the wrap up session. No additional mapping was conducted.



Figure 1. Location of Arctic Bay

Chapter 2: Protecting and Sustaining the Environment

Protecting and Sustaining the Environment was one of five topics presented to and discussed by participants during the Open House, Elected Officials Meeting, Public Workshop and Wrap up Session, collectively referred to in this document as information sharing and gathering sessions.

2.1 Areas presented to participants

During the information sharing and gathering sessions, participants were presented the following areas and issues as important to Protecting and Sustaining the Environment.

- Key bird habitat sites
- Caribou Habitat sites
- Atlantic Cod Lakes
- Cumulative Impacts
- Transboundary considerations
- Climate change

The importance of these issues and areas to Protecting and Sustaining the Environment was not disputed by participants during the information sharing and gathering sessions.

2.2 Areas identified by participants

Additional areas and issues were identified by participants as important to Protecting and Sustaining the Environment during the information sharing and gathering sessions. These additional areas are;

- Caribou
- Marine Mammals
- Nesting areas for birds
- Muskox
- Important wildlife areas

- National Parks
- Polar Bear

2.3 Areas of importance to Protecting and Sustaining the Environment

Areas and issues discussed during the information sharing and gathering sessions as important to Protecting and Sustaining the Environment are illustrated on Map 1, including areas identified in the DNLUP and areas identified by the community. Scanned images of the maps on which community feedback was recorded can be found in Appendix 4.

Based on discussions with participants, the NPC understands that:

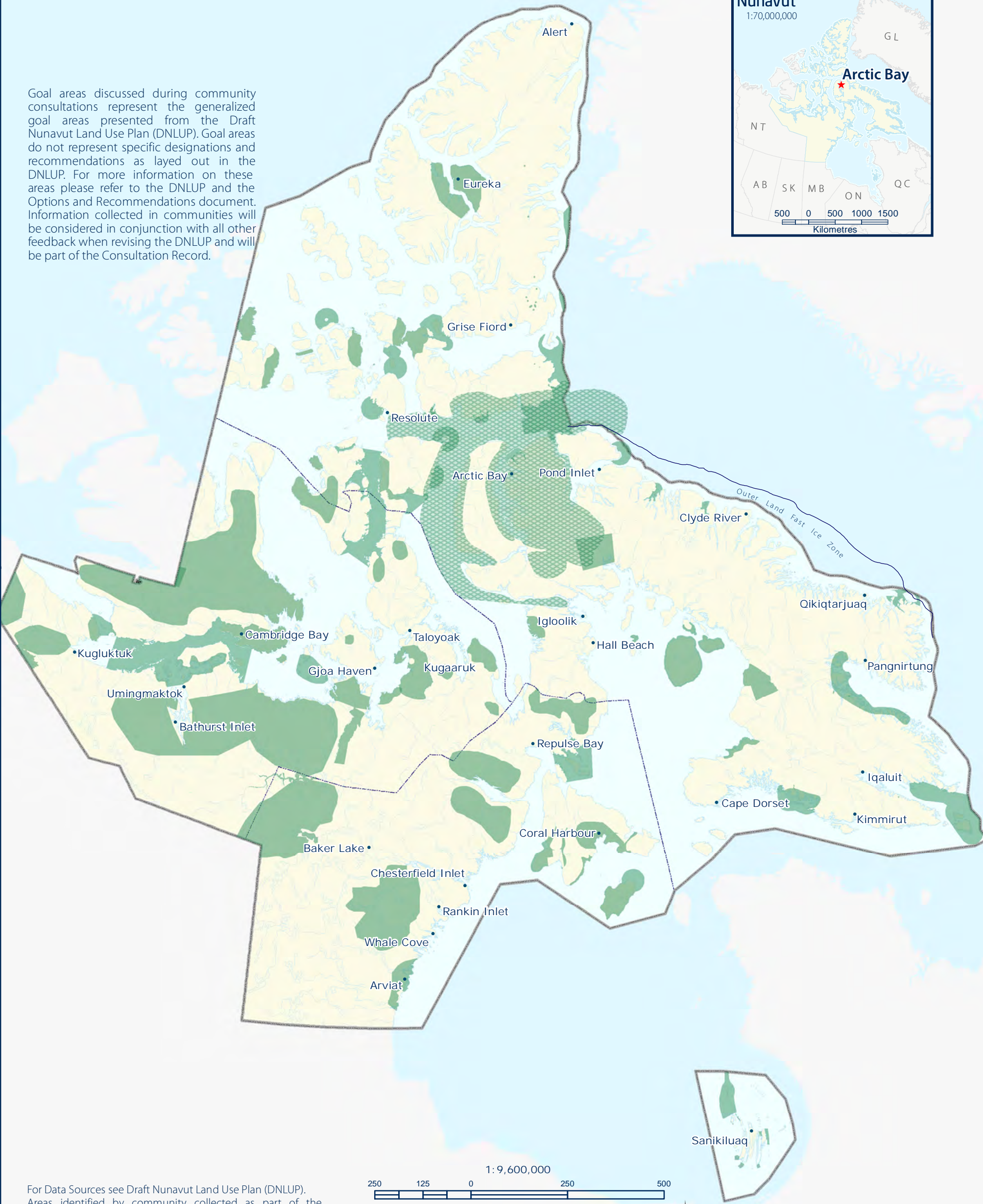
- The areas identified on Map 1 are considered by the Community to be important to Protecting and Sustaining the Environment.
- In these areas, the community would like the NLUP to encourage activities that support environmental protection and management needs, including wildlife conservation, protection and management.

This feedback will be considered in conjunction with all other feedback when revising the DNLUP.



-  PSE Goal areas from the DNLUP discussed during community consultations
-  Additional PSE Goal areas identified during community consultations

Goal areas discussed during community consultations represent the generalized goal areas presented from the Draft Nunavut Land Use Plan (DNLUP). Goal areas do not represent specific designations and recommendations as layed out in the DNLUP. For more information on these areas please refer to the DNLUP and the Options and Recommendations document. Information collected in communities will be considered in conjunction with all other feedback when revising the DNLUP and will be part of the Consultation Record.



For Data Sources see Draft Nunavut Land Use Plan (DNLUP). Areas identified by community collected as part of the Nunavut Planning Commissions Community Engagement Strategy during the Mapping Sessions for the DNLUP on November 1 & 2, 2012. Maps were digitized at the Nunavut Planning Commission. To be used for illustration purposes only as part of the Draft Nunavut Land Use Plan Consultation Process.



Projection: Canada Lambert Conformal Conic, NAD83
Produced by the Nunavut Planning Commission: (867)983-4625, npc@nunavut.ca
June-19-13

Chapter 3: Encouraging Conservation Planning

Encouraging Conservation Planning was one of five topics presented to and discussed by the participants during the information sharing and gathering sessions.

3.1 Areas presented to participants

During the information sharing and gathering sessions, participants were presented the following areas and issues as important to Encouraging Conservation Planning;

- National Parks Awaiting Full Establishment
- Proposed National Parks
- National Marine Conservation Areas
- Thelon Wildlife Sanctuary
- Migratory Bird Sanctuaries
- National Wildlife Areas
- National Historic Sites
- Territorial Historic Sites
- Heritage Rivers

The importance of these issues and areas to Encouraging Conservation Planning was not disputed by participants during the information sharing and gathering sessions.

3.2 Areas identified by participants

Additional areas and issues were identified by participants as important to Encouraging Conservation Planning during the information sharing and gathering sessions. These additional areas are.

The additional areas identified include;

- Moffat Inlet
- Sod Houses

- Historical Camps
- Heritage Rivers

3.3 Areas of importance to Encouraging Conservation Planning

Areas and issues discussed during the information sharing and gathering sessions as important to Encouraging Conservation Planning are illustrated on Map 2, including areas identified in the DNLUP and areas identified by the community. Scanned images of the maps on which community feedback was recorded can be found in Appendix 4.

Based on discussions with participants, the NPC understands that:

- The areas identified on Map 2 are considered by the Community to be important to Encouraging Conservation Planning.
- In these areas, the community would like the NLUP to encourage activities that support environmental protection and management needs, including wildlife conservation, protection and management.

This feedback will be considered in conjunction with all other feedback when revising the DNLUP.



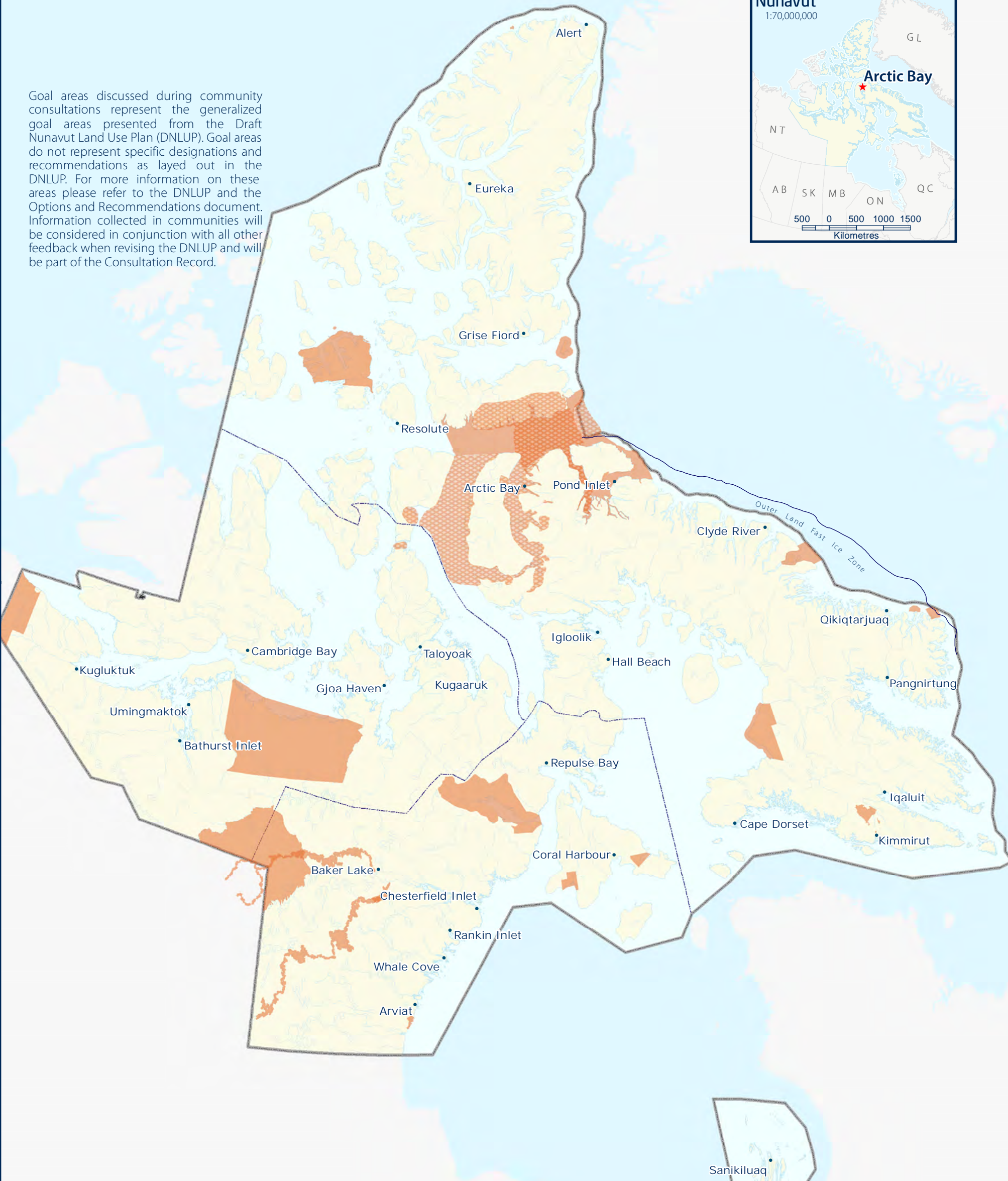


ECP Goal areas from the DNLUP discussed during community consultations



Additional ECP Goal areas identified during community consultations

Goal areas discussed during community consultations represent the generalized goal areas presented from the Draft Nunavut Land Use Plan (DNLUP). Goal areas do not represent specific designations and recommendations as layed out in the DNLUP. For more information on these areas please refer to the DNLUP and the Options and Recommendations document. Information collected in communities will be considered in conjunction with all other feedback when revising the DNLUP and will be part of the Consultation Record.



For Data Sources see Draft Nunavut Land Use Plan (DNLUP). Areas identified by community collected as part of the Nunavut Planning Commissions Community Engagement Strategy during the Mapping Sessions for the DNLUP on November 1 & 2, 2012. Maps were digitized at the Nunavut Planning Commission. To be used for illustration purposes only as part of the Draft Nunavut Land Use Plan Consultation Process.



ᓄᓇᓂᓄᓐ ᐸᓐᓇᓂᓄᓐ
Nunavunmi Parnaiyiit
Nunavut Planning Commission
Commission d'Aménagement du Nunavut



Projection: Canada Lambert Conformal Conic, NAD83
Produced by the Nunavut Planning Commission: (867)983-4625, npc@nunavut.ca
June-19-13

Chapter 4: Building Healthier Communities

Building Healthier Communities was one of five topics presented to and discussed by the participants during the information sharing and gathering sessions.

4.1 Areas presented to participants

During the information sharing and gathering sessions, participants were presented the following areas and issues as important to Building Healthier Communities;

- Areas of Community Interest
- Community Land Use
- Transportation Infrastructure
- Unincorporated Communities
- Alternative Energy Sources
- Community drinking water supplies
- Land remediation
- Northern Contaminated Sites Program
- Aerodromes
- Canadian Forces Station
- Northern Warning System sites

The importance of these issues and areas to Building Healthier Communities was not disputed by participants.

4.2 Areas identified by participants

Additional areas and issues were identified by participants as important to contributing to the goal of Building Healthier Communities during the information sharing and gathering sessions. These additional areas are;

- Polar Bear hunting areas

- Contaminated Sites
- Drinking Water

4.3 Areas of importance to Building Healthier Communities



Areas and issues discussed during the information sharing and gathering sessions as important to Building Healthier Communities are illustrated on Map 3, including areas identified in the DNLUP and areas identified by the community. Scanned images of the maps on which community feedback was recorded can be found in Appendix 4.

Based on discussions with participants, the NPC understands that:

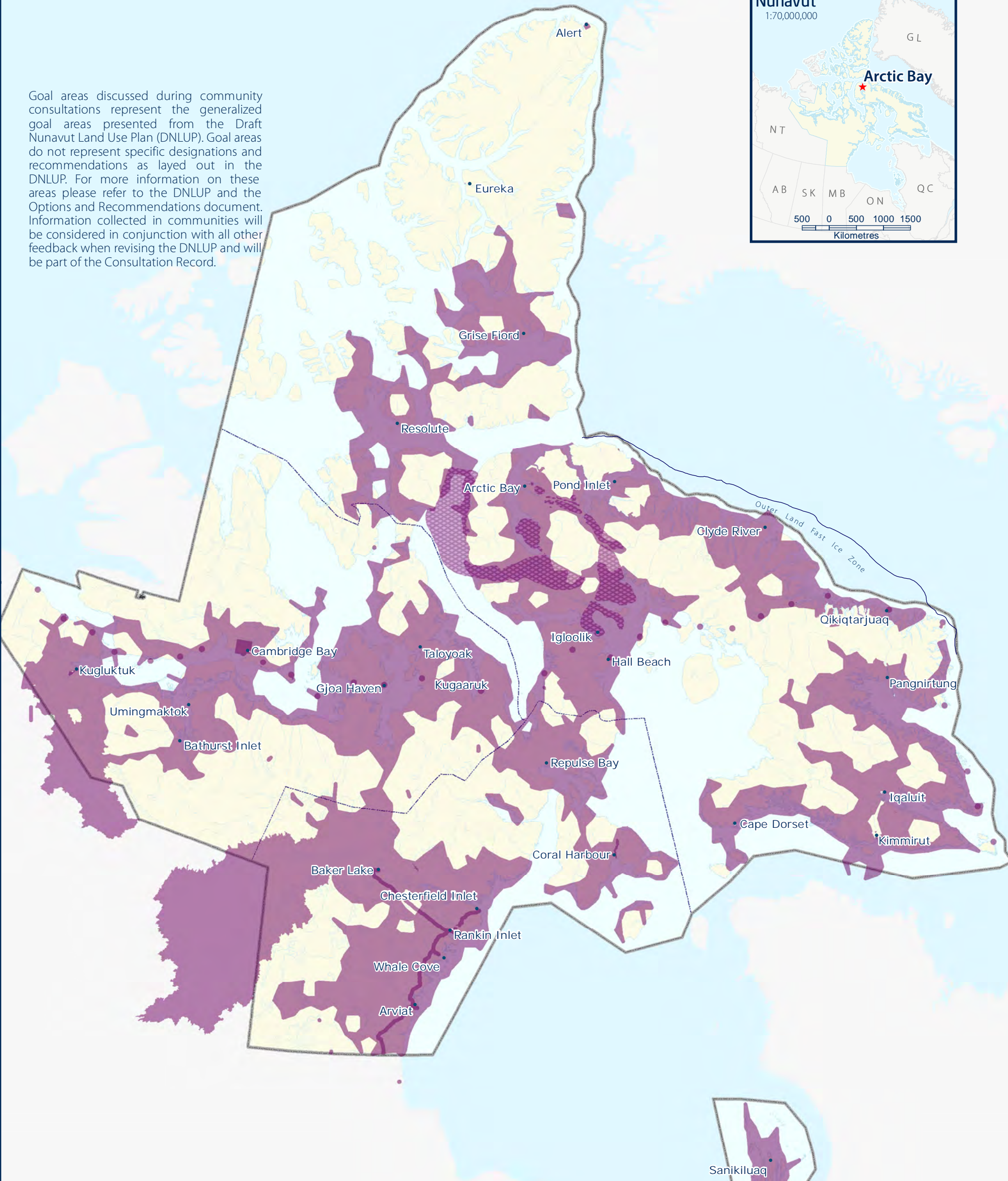
- The areas identified on Map 3 are considered by the Community to be important to Building Healthier Communities.
- In these areas, the community would like the NLUP to encourage activities that support community needs and cultural priorities.

This feedback will be considered in conjunction with all other feedback when revising the DNLUP.



-  BHC Goal areas from the DNLUP discussed during community consultations
-  Additional BHC Goal areas identified during community consultations

Goal areas discussed during community consultations represent the generalized goal areas presented from the Draft Nunavut Land Use Plan (DNLUP). Goal areas do not represent specific designations and recommendations as layed out in the DNLUP. For more information on these areas please refer to the DNLUP and the Options and Recommendations document. Information collected in communities will be considered in conjunction with all other feedback when revising the DNLUP and will be part of the Consultation Record.



For Data Sources see Draft Nunavut Land Use Plan (DNLUP). Areas identified by community collected as part of the Nunavut Planning Commissions Community Engagement Strategy during the Mapping Sessions for the DNLUP on November 1 & 2, 2012. Maps were digitized at the Nunavut Planning Commission. To be used for illustration purposes only as part of the Draft Nunavut Land Use Plan Consultation Process.



Projection: Canada Lambert Conformal Conic, NAD83
Produced by the Nunavut Planning Commission: (867)983-4625, npc@nunavut.ca
June-19-13

Chapter 5: Encouraging Sustainable Economic Development

Encouraging Sustainable Economic Development was one of five topics presented to and discussed by the participants during the information sharing and gathering sessions.

5.1 Areas presented to participants

During the information sharing and gathering sessions, participants were presented with the following areas important to Encouraging Sustainable Economic Development;

- Mineral Exploration and Production
- Oil and Gas Exploration
- Commercial Fisheries

The importance of these issues and areas to Encouraging Sustainable Economic Development was not disputed by participants during the information sharing and gathering sessions.

5.2 Areas identified by participants

Additional areas and issues were identified by participants as important to Encouraging Sustainable Economic Development during the information sharing and gathering sessions. The additional areas identified are;

- Mineral exploration
- Commercial fishing
- Beluga and Char Commercial fishing
- Polar Bear Tourism and Sport Hunting

5.3 Areas of importance to Encouraging Sustainable Economic Development

Areas and issues discussed during the information sharing and gathering sessions as important to Encouraging Sustainable



Economic Development are illustrated on Map 4, including areas identified in the DNLUP and areas identified by the community. Scanned images of the maps on which community feedback was recorded can be found in Appendix 4.

Based on discussions with participants, the NPC understands that:

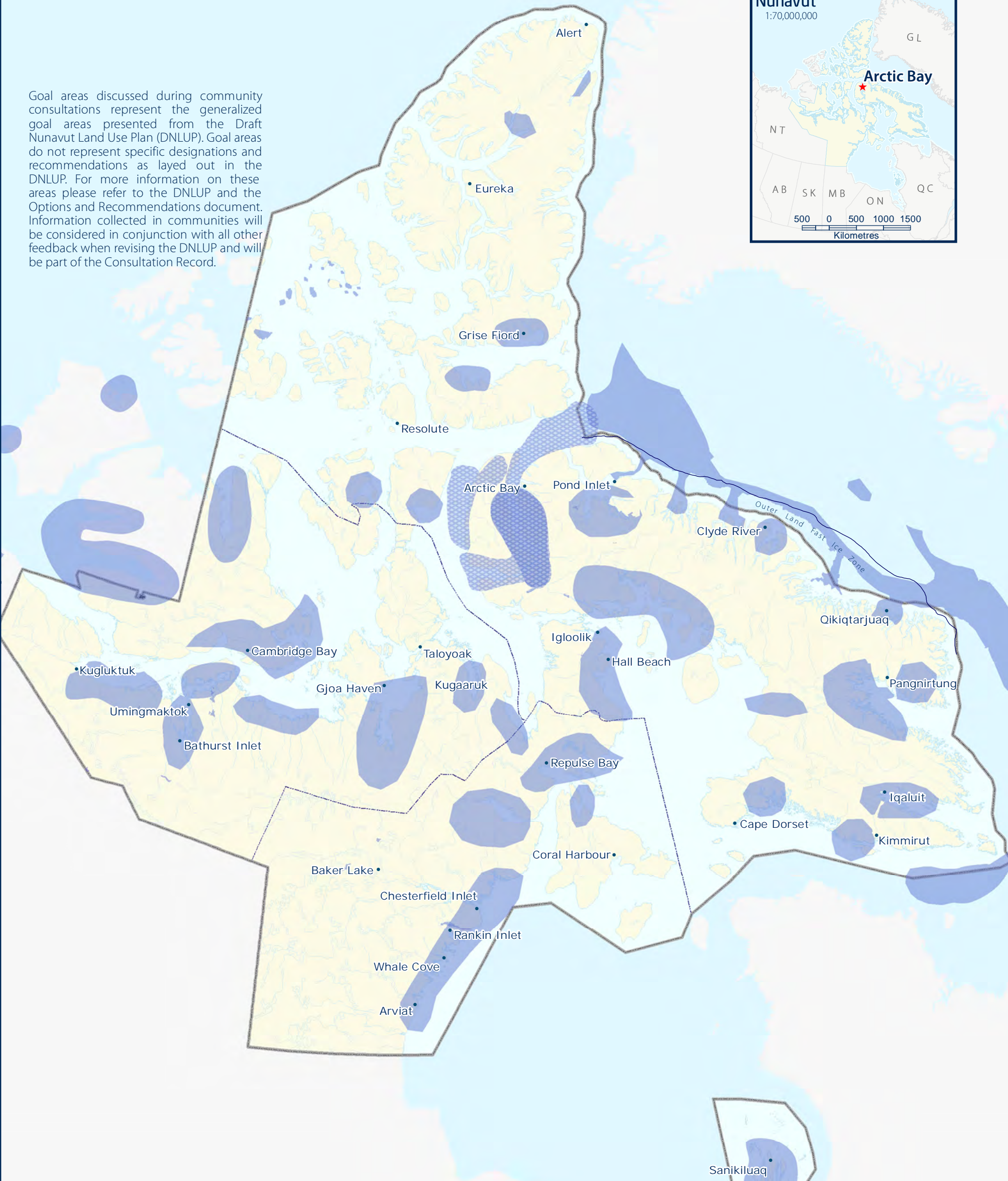
- The areas identified on Map 4 are considered by the Community to be important to Encouraging Sustainable Economic Development.
- In these areas, the community would like the NLUP to encourage activities that support economic opportunities and needs.

This feedback will be considered in conjunction with all other feedback when revising the DNLUP.



-  ESED Goal areas from the DNLUP discussed during community consultations
-  Additional ESED Goal areas identified during community consultations

Goal areas discussed during community consultations represent the generalized goal areas presented from the Draft Nunavut Land Use Plan (DNLUP). Goal areas do not represent specific designations and recommendations as layed out in the DNLUP. For more information on these areas please refer to the DNLUP and the Options and Recommendations document. Information collected in communities will be considered in conjunction with all other feedback when revising the DNLUP and will be part of the Consultation Record.



For Data Sources see Draft Nunavut Land Use Plan (DNLUP). Areas identified by community collected as part of the Nunavut Planning Commissions Community Engagement Strategy during the Mapping Sessions for the DNLUP on November 1 & 2, 2012. Maps were digitized at the Nunavut Planning Commission. To be used for illustration purposes only as part of the Draft Nunavut Land Use Plan Consultation Process.



Projection: Canada Lambert Conformal Conic, NAD83
Produced by the Nunavut Planning Commission: (867)983-4625, npc@nunavut.ca
June-19-13

6.1 Areas identified in the Draft Plan

The DNLUP identifies areas important for a variety of uses. These areas were presented to participants during the workshop as Mixed Use Areas. These areas, as they occur around the community, are illustrated on Map 5.

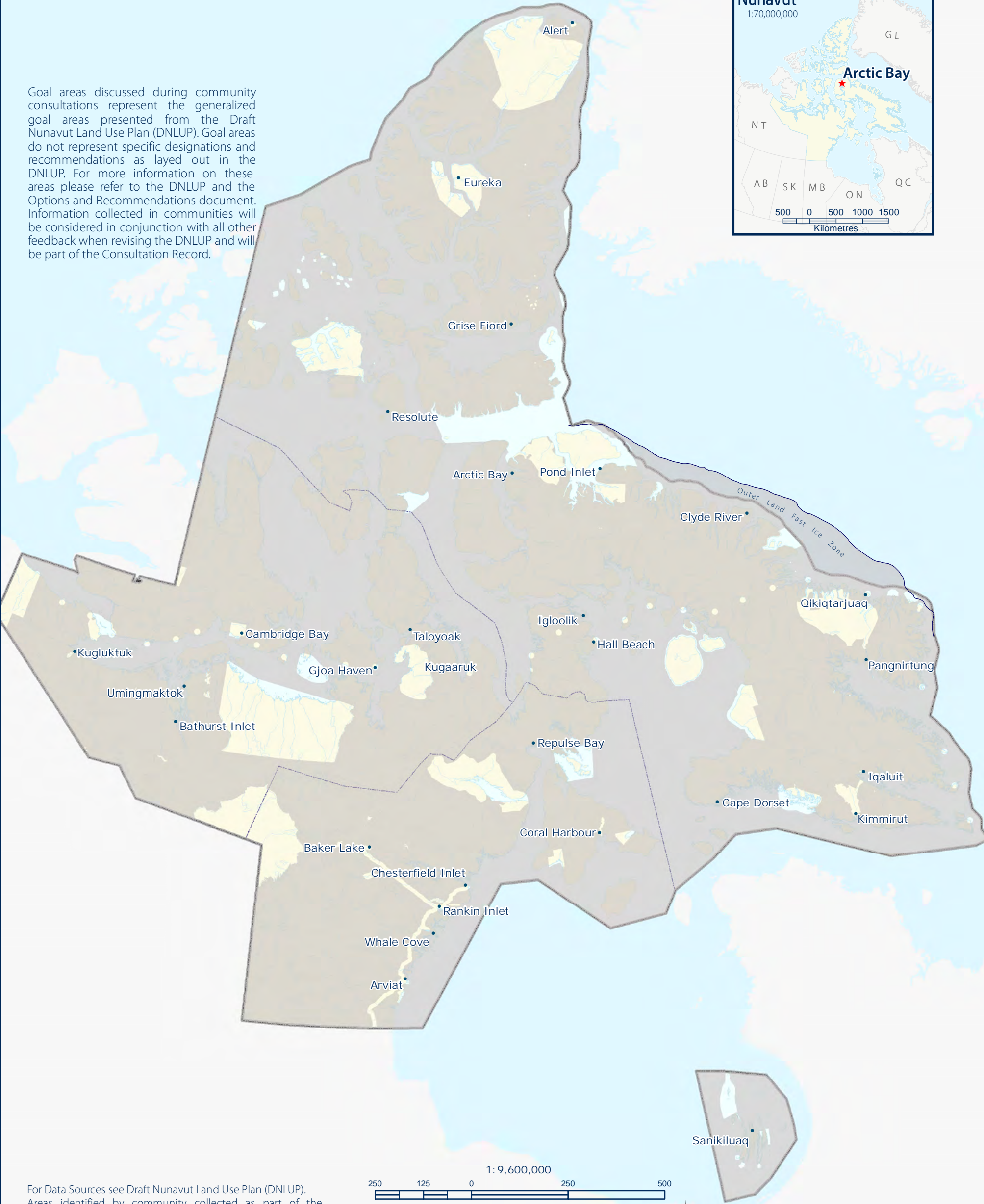
6.2 Areas identified by participants

No additional areas were identified as Mixed Use by participants. However, some areas identified as Mixed Use in the DNLUP were considered by participants to require additional protection because of their particular qualities. These areas and the goals they are important for are identified on Map 6.



MU Goal areas from DNLUP discussed during community consultations

Goal areas discussed during community consultations represent the generalized goal areas presented from the Draft Nunavut Land Use Plan (DNLUP). Goal areas do not represent specific designations and recommendations as layed out in the DNLUP. For more information on these areas please refer to the DNLUP and the Options and Recommendations document. Information collected in communities will be considered in conjunction with all other feedback when revising the DNLUP and will be part of the Consultation Record.



For Data Sources see Draft Nunavut Land Use Plan (DNLUP). Areas identified by community collected as part of the Nunavut Planning Commissions Community Engagement Strategy during the Mapping Sessions for the DNLUP on November 1 & 2, 2012. Maps were digitized at the Nunavut Planning Commission. To be used for illustration purposes only as part of the Draft Nunavut Land Use Plan Consultation Process.

2501250250500

Kilometres



ᓄᓇᓂᓄᓄᓄ ᐸᓇᓂᓄᓄᓄ

Nunavunmi Parnaiyiit

Nunavut Planning Commission

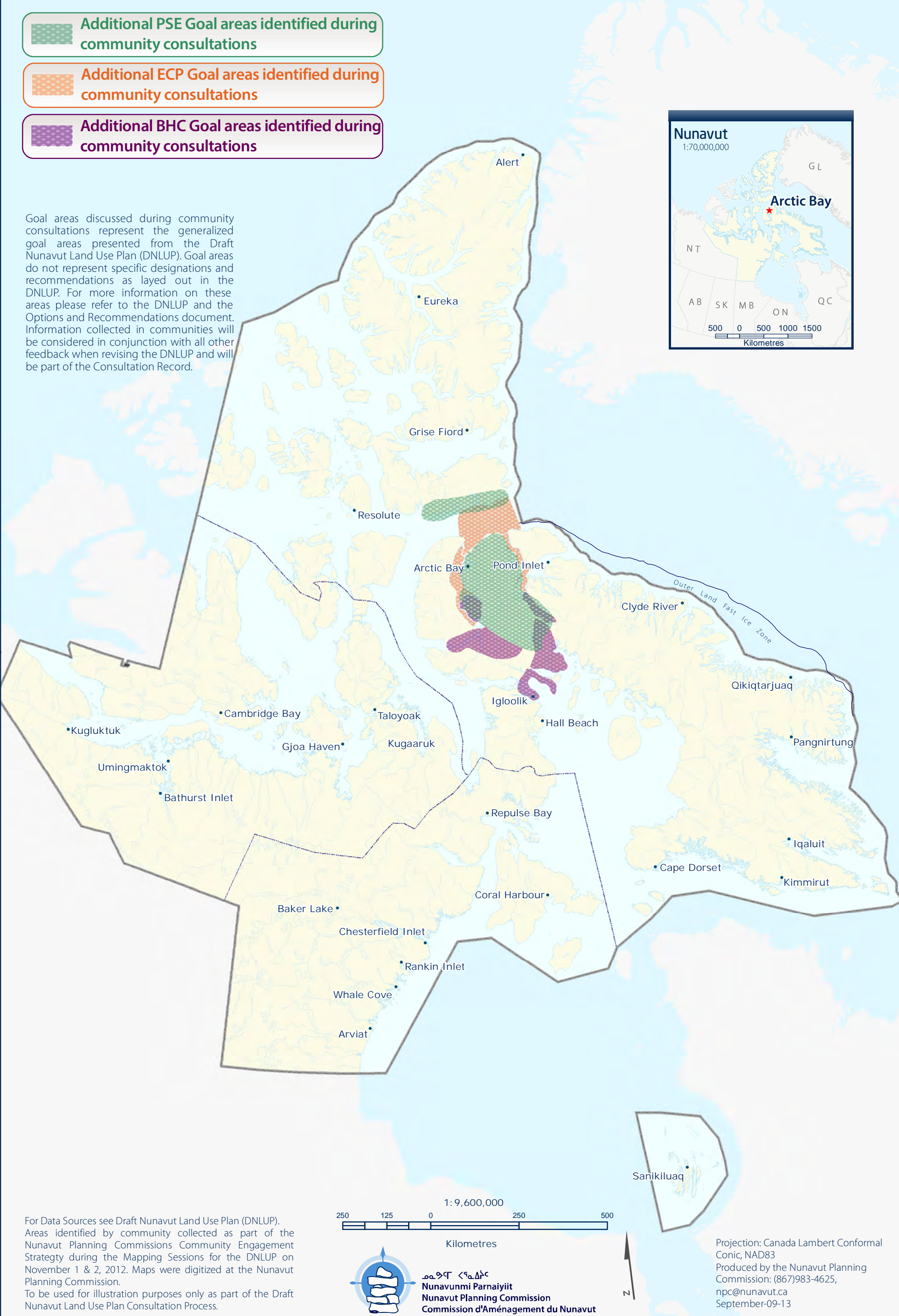
Commission d'Aménagement du Nunavut

N

Projection: Canada Lambert Conformal Conic, NAD83
Produced by the Nunavut Planning Commission: (867)983-4625, npc@nunavut.ca
June-19-13

-  Additional PSE Goal areas identified during community consultations
-  Additional ECP Goal areas identified during community consultations
-  Additional BHC Goal areas identified during community consultations

Goal areas discussed during community consultations represent the generalized goal areas presented from the Draft Nunavut Land Use Plan (DNLUP). Goal areas do not represent specific designations and recommendations as layed out in the DNLUP. For more information on these areas please refer to the DNLUP and the Options and Recommendations document. Information collected in communities will be considered in conjunction with all other feedback when revising the DNLUP and will be part of the Consultation Record.



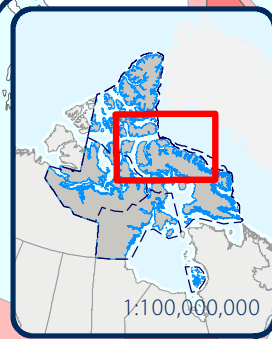
For Data Sources see Draft Nunavut Land Use Plan (DNLUP). Areas identified by community collected as part of the Nunavut Planning Commissions Community Engagement Strategy during the Mapping Sessions for the DNLUP on November 1 & 2, 2012. Maps were digitized at the Nunavut Planning Commission. To be used for illustration purposes only as part of the Draft Nunavut Land Use Plan Consultation Process.

7.1 Areas identified for multiple goals

All areas discussed with the community as important for a particular goal are shown on Map 7. In some instances, areas have been identified as important for multiple goals. These areas, and the specific goals they are important to, are also shown on Map 7. In these areas, the NPC will take all of the identified goals and all other feedback into consideration when revising the DNLUP.

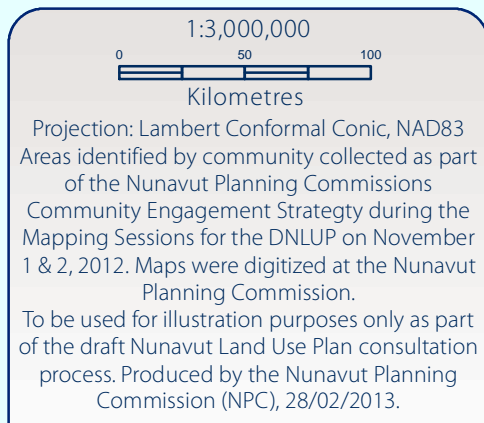
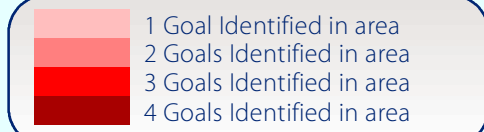


Arctic Bay • Map 7 Overlapping Goal Areas

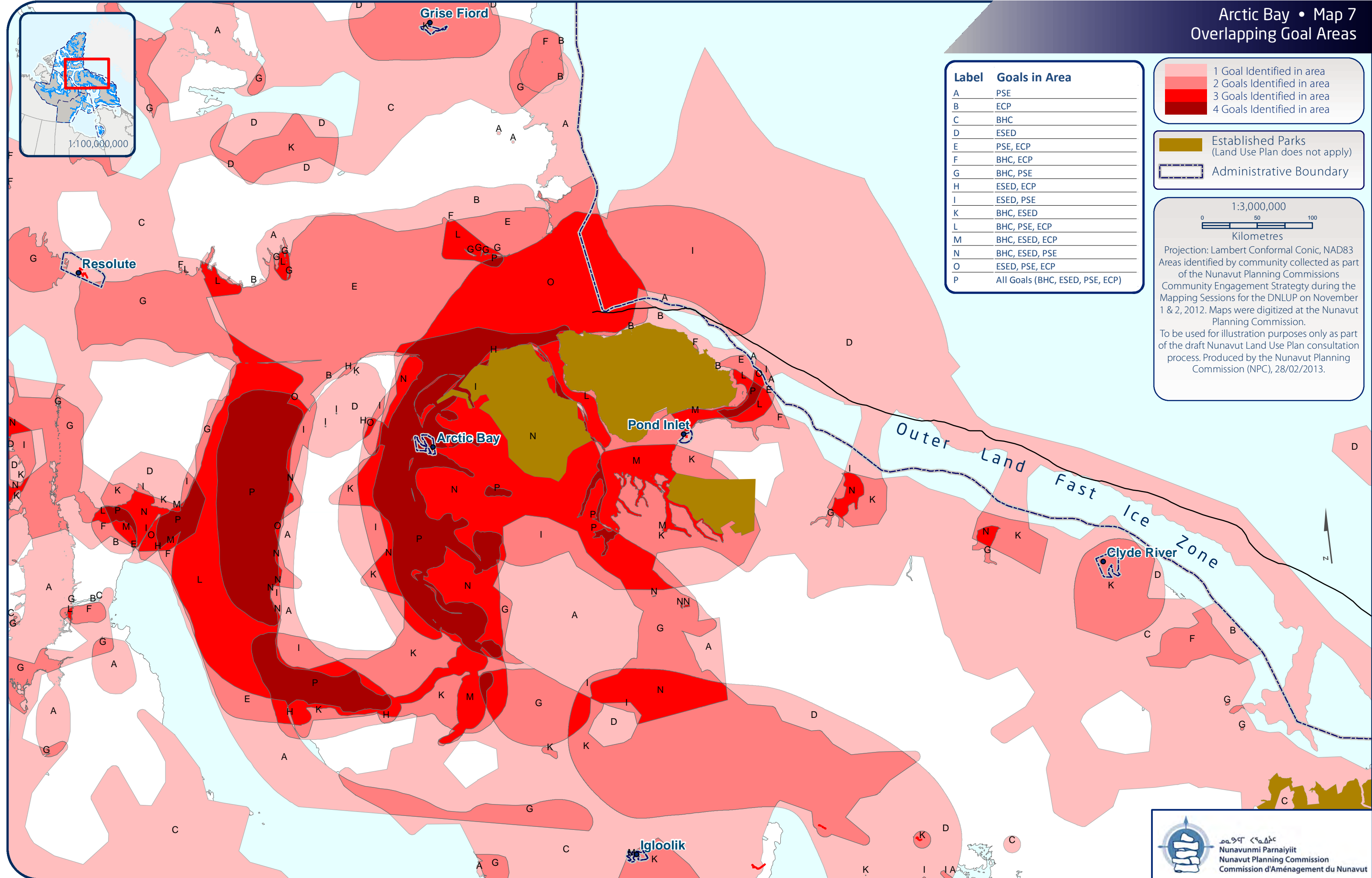


1:100,000,000

Label	Goals in Area
A	PSE
B	ECP
C	BHC
D	ESED
E	PSE, ECP
F	BHC, ECP
G	BHC, PSE
H	ESED, ECP
I	ESED, PSE
K	BHC, ESED
L	BHC, PSE, ECP
M	BHC, ESED, ECP
N	BHC, ESED, PSE
O	ESED, PSE, ECP
P	All Goals (BHC, ESED, PSE, ECP)



Projection: Lambert Conformal Conic, NAD83
Areas identified by community collected as part of the Nunavut Planning Commissions Community Engagement Strategy during the Mapping Sessions for the DNLUP on November 1 & 2, 2012. Maps were digitized at the Nunavut Planning Commission.
To be used for illustration purposes only as part of the draft Nunavut Land Use Plan consultation process. Produced by the Nunavut Planning Commission (NPC), 28/02/2013.



Appendix 1: Open House

During the open house, participants raised the following issues:

- Concerned with impacts from oil exploration in Greenland, including sonic depth sounders
- The identification of caribou areas on Baffin Island
- Need for a no-fly zone for helicopters in Moffat Inlet, including areas where ATVs are driven
- Interested in opportunities for jobs, and concerned with the level of unemployment since the closure of Nanisivik
- Concerned with the large number of flights disturbing caribou hunting
- Narwhal and seals are also important to the economy
- Concerned with the remediation of the old airport, including fuel in the ground
- The cleanup of Nanisivik



Appendix 2: Elected Officials Meeting

The elected officials meeting was attended by the Mayor and members of the Hamlet Council and HTO. During the meeting, participants raised the following issues:

- Impacts from shipping
- Oil spill management
- Oil and gas exploration and ship traffic in Lancaster Sound
- Protection of wildlife and marine mammals
- Concerns with ice breaking in Admiralty Inlet
- Concerns with cruise ships and pleasure craft in certain areas



Appendix 3: Questions and Answers

During the community workshop, there was a question and answer period, which included a discussion of the following topics:

- How effective will the land use plan be?
 - The Commission explained that the plan will be legally binding once approved.
- Why has it taken so long to produce a plan?
 - The Commission answered that the North Baffin and Keewatin Regional Land Use Plans are in place and the Commission has been working on a Nunavut wide plan for several years. The Commission intended to visit communities earlier, but government did not support previous attempts.
- Concerned with the decrease in numbers of seals.
- Can the land use plan place restrictions on the sea?
 - The Commission answered that the land use plan applies to the ocean as well.
- Concerned with cruise ships going to Moffat Inlet.
 - The Commission answered that the areas can be identified during the mapping session, and that the Nunavut Marine Council may also be able to consider the issue.
- Concerned with Russian claim in Lancaster Sound.
 - The Commission answered that Russia (and other countries) are concerned with passage through Lancaster Sound. The area of dispute regarding ownership between Russia and Canada is further north.
- Concerned with the protection of historic/cultural sites.
 - The Commission answered that the areas can be identified during the mapping session.



Appendix 4: Community Workshop Scanned Maps

Three groups completed the mapping session to identify important areas. This Appendix contains the maps that were used by participants to identify areas that are important to the following land use planning goals:

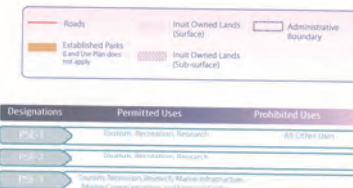
- Protecting and Sustaining the Environment
- Encouraging Conservation Planning
- Building Healthier Communities
- Encouraging Sustainable Economic Development
- Mixed Use

Also included on each map is a reference table that includes the specific values that were identified for the area.

During the mapping portion of the community workshop, the following concerns were raised that did not apply to a specific area that was identified on the maps:

- No areas should be identified for their importance to oil and gas


ARCTIC BAY WORKSHOP
Nov 1, 2012
AB



Reference Table for Recommendations	
ISS-01	Research Proposals Insured as a Key Benefit. See should this job at least impact on the emergency phase of this study on climate
ISS-02	Project Impacts should be limited to future carbon capture grounds should take the impact impact on the climate change, such as saving energy and reducing emissions
ISS-03	Project Proposals should be in order to know carbon the carbon emissions and take into account impacts that may impact the ability of carbon to close the loop
ISS-04	Project Proposals should act as part of the Green Deal. Look water and in National should take into account any secondary impacts that they reduce the consumption of water

Code	Comments
XP01	All Marine mammals - Bowhead, All seals, only way to get from East to West through that area - Lancaster Sound. We are concerned for potential shipping activity, the potential oil and gas shipping activity. This area seems large, but this is where we know whales and seals migrate. How do you protect outside boundary if animals are coming from outside? We are leaving areas for Pond Inlet residents to identify
XP02	Kitwaka birds sanctuary - They are seabirds with red feet. They live on that island. I realize that they have already been identified as sanctuary. It could be nesting grounds for different birds as well, like ducks. This area is very important for geese and other migrating bird
XP03	King Eider, Eider duck, Goose lay eggs there right along coast at Cape Crawford
XP04	Eider nesting grounds
XP05	Whole coast has little islands that are nesting grounds for little sea birds, arctic terns. We do not want to see high shipping activity





 Coordinate System: EPSG 42304 LCC
 Projection: Lambert Conformal Conic
 Datum: North American 1983
 False Easting: 0.0000
 False Northing: 0.0000
 Central Meridian: -95.0000
 Standard Parallel 1: 49.0000
 Standard Parallel 2: 77.0000
 Latitude Of Origin: 49.0000
 Units: Meter




For Land Use Designations and Recommendations sources see List of Data Sources

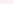

Hillshade created by utilizing Twiss method in Hipslope software courtesy of ESRI under Terms Water bodies created by merging all 250,000 m² shapefiles in Nunavut version 2.0.0 reflecting all water bodies over 90 hectares in land. Land outside of Nunavut, courtesy of Government Administrative boundaries consist of NRC Canada's data provided by Natural Resources Canada (Canada's data), combined with municipal boundaries, provided by Natural Resources Canada (Canada's data). The map includes data from Parks Canada (Tunngavik incorporated, territorial parks from the Government of Nunavut) and National Parks Canada (Parks Canada). Color for areas within municipal boundaries was obtained from Natural Resources Canada (Canada's data).

This map may be used for reference purposes only. Natural Resources Canada disclaims all liability for any further use of this map or data therein must be confirmed by consulting the Nunavut Planning Commission at: (867)793-8425 or email nrc@nrc.ca.

Thursday, October 24, 2019



 Roads
  Inuit Owned Lands (Surface)
  Administrative Boundary

 Established Parks (and the Plan does not apply)
  Inuit Owned Lands (Sub-surface)

Designations	Permitted Uses	Prohibited Uses
PSI-1	Tourism, Recreation, Research	All Other Uses
PSI-2	Tourism, Recreation, Research	
PSI-3	Shrimp, Recreation, Research, Marine Infrastructure, Marine Gaming situations and Electric Cables	

Reference Table for Recommendations	
PSI-01	Project Proponent should install a key-bridged habitat tank should take into account impacts on the migratory bird habitat that rely on the area.
PSI-02	Project Proponent located in historic carbonized grazing grounds should take into account impacts on carbonized grazing and soil salinity areas and riparian zones.
PSI-03	Project Proponent located in and/or near riparian areas or riparian areas should take into account impacts that may impact the ability of animals to cross the river.
PSI-04	Project Proponent located in portions of the Great River Lake watershed in Nanaimo should take into account impacts that may impact the watershed that may reduce the water quality of the watershed.

Code	Comments
XP01	Area where birds nest, important egg collection area
XP02	Area of Char, important wildlife area
XP03	Area where beluga whale are, important wildlife area
XP04	Area for seal, important wildlife area
XP05	Area where polar bear are, important wildlife area
XP06	Muskox, marine mammals, walrus, beluga, important wildlife area
XP07	Important Caribou Habitat
XP08	Caribou Habitat
XP09	Marine mammals, arctic char, salmon
XP10	Route for all the marine mammals
XP11	No gas, area preferred for a National Park
XP12	Polar bear, muskox, important wildlife area
XP13	Important bird habitat

63 8/20/95

Consent to _____
Location _____
Region _____
Date _____
Community (City) _____
Other _____

Signature of the Community (city) is permission
to conduct mapping session at this location.

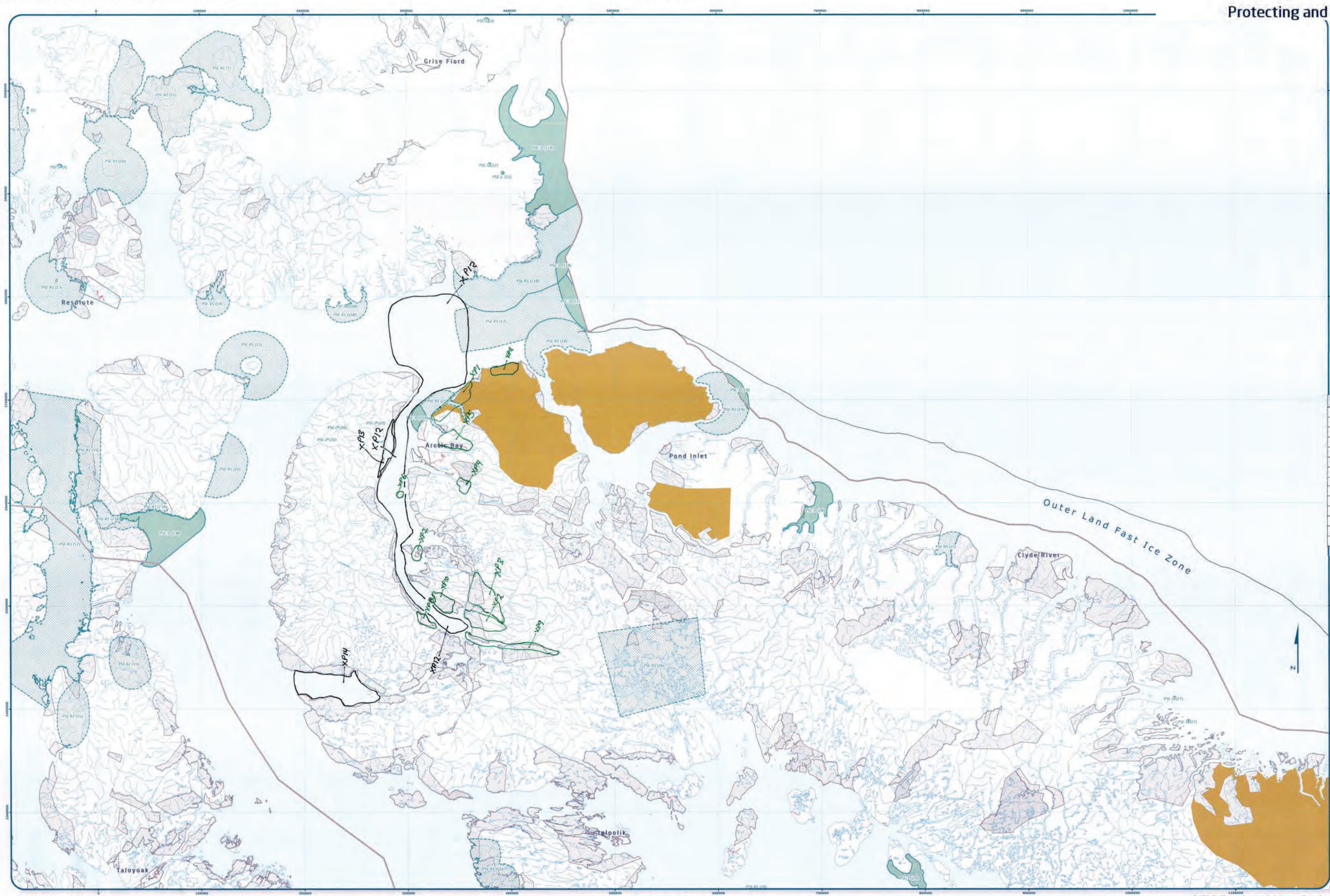
1. Steve Burke 16
2. _____ 17
3. Burman 18
4. L. Channing 19
5. Lawrence Channing 20
6. Burke et al. 21
7. _____ 22
8. _____ 23
9. _____ 24
10. _____ 25
11. _____ 26
12. _____ 27
13. _____ 28
14. _____ 29
15. _____ 30

Signature of Manager
Burke

CONFIDENTIAL
CONFIDENTIAL 9/5/95
National Planning Commission
04/97 04/97

CONFIDENTIALITY OF DATA

[illegible]



Designations	Permitted Uses	Prohibited Uses
XP01	Conservation, Research, Tourism, Recreation, Research	All other uses
XP02	Conservation, Research, Tourism, Recreation, Research	All other uses
XP03	Conservation, Research, Tourism, Recreation, Research	All other uses

Reference Table for Recommendations	
XP01	Project Proponent should conduct a full-scale environmental assessment and develop a management plan that addresses all potential impacts on the environment.
XP02	Project Proponent should conduct a full-scale environmental assessment and develop a management plan that addresses all potential impacts on the environment.
XP03	Project Proponent should conduct a full-scale environmental assessment and develop a management plan that addresses all potential impacts on the environment.
XP04	Project Proponent should conduct a full-scale environmental assessment and develop a management plan that addresses all potential impacts on the environment.
XP05	Project Proponent should conduct a full-scale environmental assessment and develop a management plan that addresses all potential impacts on the environment.
XP06	Project Proponent should conduct a full-scale environmental assessment and develop a management plan that addresses all potential impacts on the environment.
XP07	Project Proponent should conduct a full-scale environmental assessment and develop a management plan that addresses all potential impacts on the environment.
XP08	Project Proponent should conduct a full-scale environmental assessment and develop a management plan that addresses all potential impacts on the environment.
XP09	Project Proponent should conduct a full-scale environmental assessment and develop a management plan that addresses all potential impacts on the environment.
XP10	Project Proponent should conduct a full-scale environmental assessment and develop a management plan that addresses all potential impacts on the environment.
XP11	Project Proponent should conduct a full-scale environmental assessment and develop a management plan that addresses all potential impacts on the environment.
XP12	Project Proponent should conduct a full-scale environmental assessment and develop a management plan that addresses all potential impacts on the environment.
XP13	Project Proponent should conduct a full-scale environmental assessment and develop a management plan that addresses all potential impacts on the environment.
XP14	Project Proponent should conduct a full-scale environmental assessment and develop a management plan that addresses all potential impacts on the environment.

Code	Comments
XP01	Bird habitat
XP02	Bird habitat
XP03	Bird habitat
XP04	Bird habitat
XP05	Bird habitat
XP06	Bird habitat
XP07	Bird habitat
XP08	Bird habitat
XP09	Bird habitat
XP10	Bird habitat
XP11	Bird habitat
XP12	Bird habitat
XP13	Bird habitat
XP14	Bird habitat

Signature of the Community representative in person from the community mapping session as follows:

1.	26.
2.	27.
3.	28.
4.	29.
5.	30.
6.	31.
7.	32.
8.	33.
9.	34.
10.	35.
11.	36.
12.	37.
13.	38.
14.	39.
15.	40.

Signature of Mapper:



Coordinate System: EPSG 42304 LCC
Projection: Lambert Conformal Conic
Datum: North American 1983
False Easting: 0.0000
False Northing: 0.0000
Central Meridian: -95.0000
Standard Parallel 1: 49.0000
Standard Parallel 2: 77.0000
Latitude Of Origin: 49.0000
Units: Meter

For Land Use Designations and Recommendations sources see draft National Land Use Plan and background material data source documents. This map is to be used for reference purposes only by the NPC. Any further use of this map or data therein must be authorized by contacting the National Planning Commission at: (867) 788-4825 or email: nplanning@nplanning.ca Thursday, October 04, 2012

ENCOURAGING CONSERVATION PLANNING (ECP)

Scale 1:1,000,000



Designations	Permitted Uses	Prohibited Uses
ECP-1	Tourism, Recreation, Research	All Other Uses
ECP-2	Tourism, Recreation, Research	

ECPR Protect proposals located in and/or near a Heritage River should take into account the guidelines and criteria contained in the Heritage River's management plan.

Code	Comments
XC14	Historic area, contains sod houses, important for historical reasons and protection
XC15	Historic area, contains sod houses, important for historical reasons and protection
XC16	Historic area, contains sod houses, important for historical reasons and protection
XC17	Historic area, contains sod houses, important for historical reasons and protection
XC18	A lot of historic sites with sod houses,
XC19	Historical river site/heritage river
XC20	Historical river site/heritage river
XC21	Historic area, contains sod houses and heritage rivers
XC22	Historic area, contains sod houses
XC23	Historic area, contains sod houses
XC24	Historic area, contains sod houses
XC25	Historic area, contains sod houses
XC26	Historic area, contains sod houses
XC27	Historic area, contains sod houses
XC28	Historic area, contains heritage river

CONFIDENTIAL

Community Consultation Information Mapping Session

Community Name: *Portlough*

Location: *Portlough*

Region: *Portlough*

Date: *Nov 1, 2012*

Community Role: *Portlough*

Notes:

Signatures of the Community specify in permission

Formal contact mapping session in information

1. *Portlough*

2. *Portlough*

3. *Portlough*

4. *Portlough*

5. *Portlough*

6. *Portlough*

7. *Portlough*

8. *Portlough*

9. *Portlough*

10. *Portlough*

11. *Portlough*

12. *Portlough*

13. *Portlough*

14. *Portlough*

15. *Portlough*

Signature of Member: *Portlough*

CONFIDENTIAL

Community Consultation Information Mapping Session

Community Name: *Portlough*

Location: *Portlough*

Region: *Portlough*

Date: *Nov 1, 2012*

Community Role: *Portlough*

Notes:

Signatures of the Community specify in permission

Formal contact mapping session in information

1. *Portlough*

2. *Portlough*

3. *Portlough*

4. *Portlough*

5. *Portlough*

6. *Portlough*

7. *Portlough*

8. *Portlough*

9. *Portlough*

10. *Portlough*

11. *Portlough*

12. *Portlough*

13. *Portlough*

14. *Portlough*

15. *Portlough*

Signature of Member: *Portlough*

CONFIDENTIAL

A horizontal number line starting at 0 and ending at 100. Major tick marks are placed at 0, 20, 40, 60, 80, and 100. The line is divided into five segments by these tick marks. Above the line, the lengths of these segments are labeled: the first segment (0 to 20) is labeled '20', the second (20 to 40) is labeled '20', the third (40 to 60) is labeled '20', the fourth (60 to 80) is labeled '40', and the fifth (80 to 100) is labeled '80'.

Coordinate System: EPSG 42304 LCC
Projection: Lambert Conformal Conic
Datum: North American 1983
False Easting: 0.0000
False Northing: 0.0000
Central Meridian: -95.0000
Standard Parallel 1: 49.0000
Standard Parallel 2: 77.0000
Latitude Of Origin: 49.0000

MAP 101 of S Working Draft Sub-regional map data sheet

For Land Use Designations and Recommendations sources see draft Nunavut Land Use Plan and Background Material data source documents

Habitat created by utilizing Sella's method in Wildlife Habitat Inventory, version 2.0, and selecting all watersheds above 50 hectares in size. Land outside of Nunavut, courtesy of Geographics. Administrative boundaries courtesy of NPD. Municipal boundaries, created to reflect the current municipal jurisdictions, compiled with municipal boundaries, provided by Natural Resources Canada (cadastral data, Inuit Owned Lands courtesy of Nunavut Tunngavik Incorporated). Territorial parks from the Government of Nunavut, Parks from Parks Canada

Data for areas within municipal boundaries obtained from Statistics Canada (cadastral data)

This map is to be used for reference purposes only by the NRC

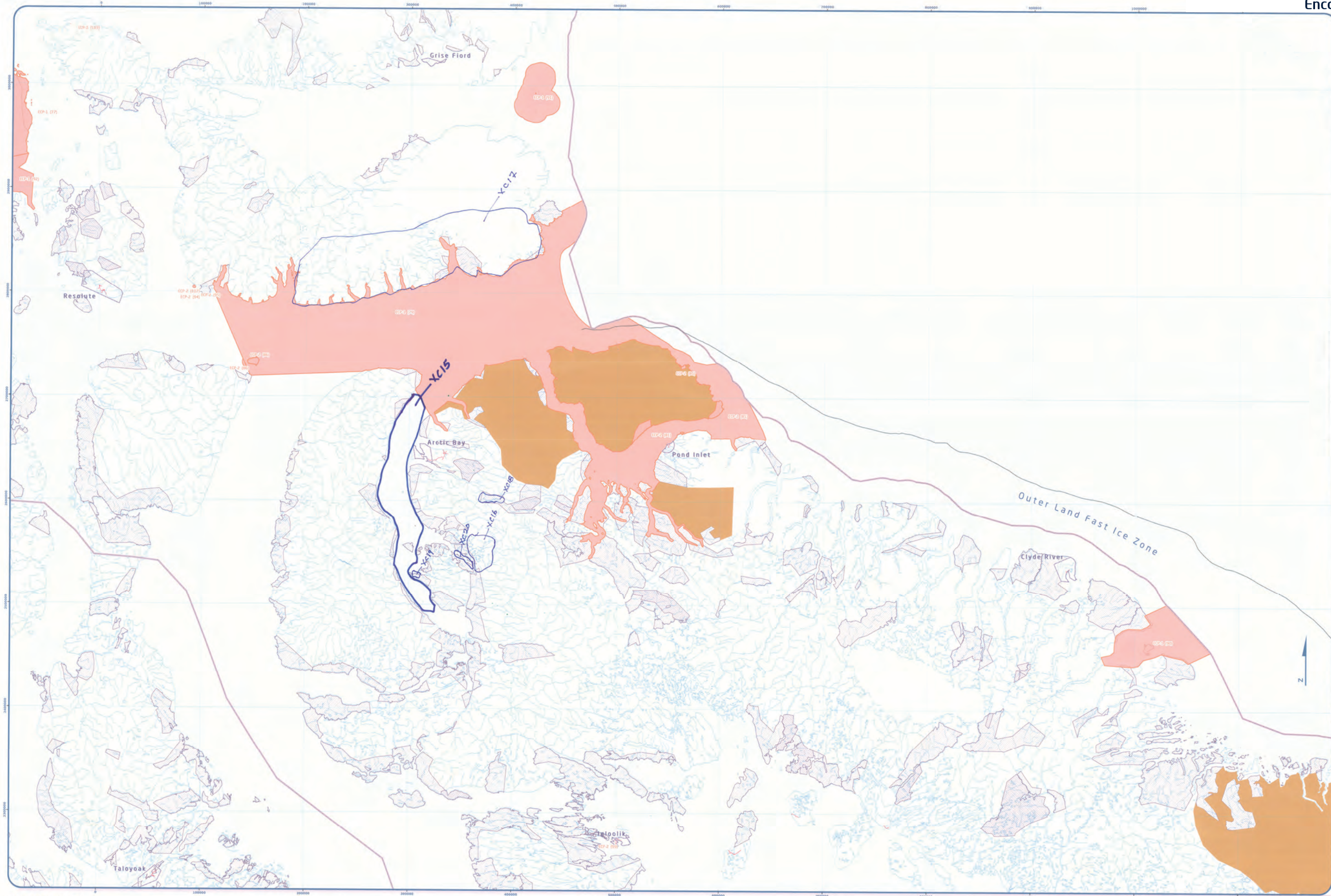
Any further use of this map or data therein must be authorized by contact the Nunavut Planning Commission at (867) 769-2102 or info@nrc.ca

Friday, October 22, 2010

LANCASTER SOUND

Scale 1:1,000,000

NPC Regional Map Series



The map displays the study area with various land use designations and permitted/prohibited uses. A legend at the top identifies the following:

- Roads** (Red line)
- Established Parks (Land Use Plan does not apply)** (Orange area)
- Inuit Owned Lands (Surface)** (Light purple area)
- Inuit Owned Lands (Sub-surface)** (Dark purple area)
- Administrative Boundary** (Dashed line)

The map is divided into three main sections:

- Designations:**
 - CCP-1:** Mining, Exploration, Research
 - CCP-2:** Tourism, Recreation, Research
- Permitted Uses:** (Indicated by a green arrow pointing right)
- Prohibited Uses:** (Indicated by a red arrow pointing right)

Reference Table for Recommendations

ECSM Project Proposal located in and/or near a Heritage Area should take into account

Code	Comments
XC15	Would only like to see community use
XC16	this is an area where we all go for spring break camping full of wildlife including Musk-Ox
XC17	lot of fishing going on in this place during summer, winter and early spring
XC18	good grounds for hunting and should be preserved as such.
XC19	good grounds for hunting and should be preserved as such.
XC20	community use for wildlife and camping.

[illegible]

Nominal Planning Committee
 Community Consultation Hour
 Land Use Mapping Session

Community: AB
 Location: _____
 Region: _____
 Date: 2/21/11
 Government by: Chairman Chairman

Signatures of the Community signify as permission form to conduct mapping session as informants.

1.	_____	16.	_____
2.	_____	17.	_____
3.	_____	18.	_____
4.	_____	19.	_____
5.	_____	20.	_____
6.	_____	21.	_____
7.	_____	22.	_____
8.	_____	23.	_____
9.	_____	24.	_____
10.	_____	25.	_____
11.	_____	26.	_____
12.	_____	27.	_____
13.	_____	28.	_____
14.	_____	29.	_____
15.	_____	30.	_____

Signature of Mapper:

CONFIDENTIALITY STATEMENT



Coordinate System: EPSG 42304 LCC
Projection: Lambert Conformal Conic
Datum: North American 1983
False Easting: 0.0000
False Northing: 0.0000
Central Meridian: -95.0000
Standard Parallel 1: 49.0000
Standard Parallel 2: 73.0000
Latitude Of Origin: 49.0000
Units: Meter

Working Draft: Sub-regional map data sources:
For Land Use Designations and Recommendations sources used for Draft Nunavut Land Use Plan and background map data source documents.
Habitat created by utilizing Species lists in Hatched habitat polygons from ESRI data for four water bodies created by merging all 1,256,000 WTB attributes in Nunavut - version 2.0. The map shows 1000 km² water bodies and 100 hectares in size. Land outside of Nunavut, courtesy of Geographics. Administrative boundaries consist of municipal boundaries, territorial boundaries, and international boundaries. The map also shows jurisdictional boundaries with municipal boundaries, provided by Natural Resources Canada cadastral data. The map also shows jurisdictional boundaries with Nunavut Incorporated. Territorial parks from the Government of Nunavut, National Parks from Parks Canada.
Data for areas within municipal boundaries obtained from Natural Resources Canada cadastral data.
This map is to be used for reference purposes only.
Any further use of this map or data therein must be authorized by contacting the Nunavut Planning Commission at 867-979-4625 or npc@nunavut.ca

Printed October 05, 2014



Legend:

- Roads
- Established Parks (and Use Plan does not apply)
- Inuit Owned Lands (Surface)
- Inuit Owned Lands (Sub-surface)
- Administrative Boundary

Designations	Permitted Uses	Prohibited Uses
BRK-1	Roads, Railways, Utilities and Canals	
BRK-2	Roads, Railways, Utilities and Canals	
BRK-3	All uses except those Prohibited	Mining
BRK-4	Hydro electrical and related infrastructure	
BRK-5	Science, Recreational and Research, Municipal Services	
BRK-6	Municipal services	All Other Uses
BRK-7	Municipal services	
BRK-8	Reclamation and Reclamation Activities	All Other Uses
BRK-9	Reclamation and Reclamation Activities, DNO Operations and Activities	All Other Uses
BRK-10	All Other Operations and Activities	All Other Uses

Reference Table for Recommendations	
附表 1-1	Project Proposals located in the In-lake Risk Area of Inverness should take into account impacts on the cultural value of the area.
附表 1-2	Project Proposals located in areas of traditional land use should take into account impacts on the cultural value of the area.
附表 1-3	Project Proposals located in a community water supply watershed should take into account impacts on the quality and quantity of community drinking water.
附表 1-4	Project Proposals located in a sensitive Aquifer should take into account impacts on groundwater safety.

Code	Comments
CS08	Oil drums - old, scattered, from mining exploration
CS09	Old airstrip and oil drums all over land near the lake
CS10	Old oil drums - more than one, used to be old exploration camp
CS11	Oil drums - used to be old mining site, many barrels
CS12	Old airstrip right along that river
CI13	Polar Bear hunting areas along whole coast from Inlet
CI14	Nanisivik Creek - is it safe to drink? Dirty water in the watershed, Travel route during winter



Endnotes

¹ www.mn.gov

² www.mn.gov

³ www.mn.gov

⁴ www.mn.gov

⁵ www.mn.gov

⁶ www.mn.gov

⁷ www.mn.gov

⁸ www.mn.gov

⁹ www.mn.gov

¹⁰ www.mn.gov

¹¹ www.mn.gov

¹² www.mn.gov

¹³ www.mn.gov

¹⁴ www.mn.gov

¹⁵ www.mn.gov

¹⁶ www.mn.gov

¹⁷ www.mn.gov

¹⁸ www.mn.gov

¹⁹ www.mn.gov

²⁰ www.mn.gov

²¹ www.mn.gov

²² www.mn.gov

²³ www.mn.gov

²⁴ www.mn.gov

²⁵ www.mn.gov

²⁶ www.mn.gov

²⁷ www.mn.gov

²⁸ www.mn.gov

²⁹ www.mn.gov

³⁰ www.mn.gov

³¹ www.mn.gov

³² www.mn.gov

³³ www.mn.gov

³⁴ www.mn.gov

³⁵ www.mn.gov

³⁶ www.mn.gov

³⁷ www.mn.gov

³⁸ www.mn.gov

³⁹ www.mn.gov

⁴⁰ www.mn.gov

⁴¹ www.mn.gov

⁴² www.mn.gov

⁴³ www.mn.gov

⁴⁴ www.mn.gov

⁴⁵ www.mn.gov

⁴⁶ www.mn.gov

⁴⁷ www.mn.gov

⁴⁸ www.mn.gov

⁴⁹ www.mn.gov

⁵⁰ www.mn.gov

⁵¹ www.mn.gov

⁵² www.mn.gov

⁵³ www.mn.gov

⁵⁴ www.mn.gov

⁵⁵ www.mn.gov

⁵⁶ www.mn.gov

⁵⁷ www.mn.gov

⁵⁸ www.mn.gov

⁵⁹ www.mn.gov

⁶⁰ www.mn.gov

⁶¹ www.mn.gov

⁶² www.mn.gov

⁶³ www.mn.gov

⁶⁴ www.mn.gov

⁶⁵ www.mn.gov

⁶⁶ www.mn.gov

⁶⁷ www.mn.gov

⁶⁸ www.mn.gov

⁶⁹ www.mn.gov

⁷⁰ www.mn.gov

⁷¹ www.mn.gov

⁷² www.mn.gov

⁷³ www.mn.gov

⁷⁴ www.mn.gov

⁷⁵ www.mn.gov

⁷⁶ www.mn.gov

⁷⁷ www.mn.gov

⁷⁸ www.mn.gov

⁷⁹ www.mn.gov

⁸⁰ www.mn.gov

⁸¹ www.mn.gov

⁸² www.mn.gov

⁸³ www.mn.gov

⁸⁴ www.mn.gov

⁸⁵ www.mn.gov

⁸⁶ www.mn.gov

⁸⁷ www.mn.gov

⁸⁸ www.mn.gov

⁸⁹ www.mn.gov

⁹⁰ www.mn.gov

⁹¹ www.mn.gov

⁹² www.mn.gov

⁹³ www.mn.gov

⁹⁴ www.mn.gov

⁹⁵ www.mn.gov

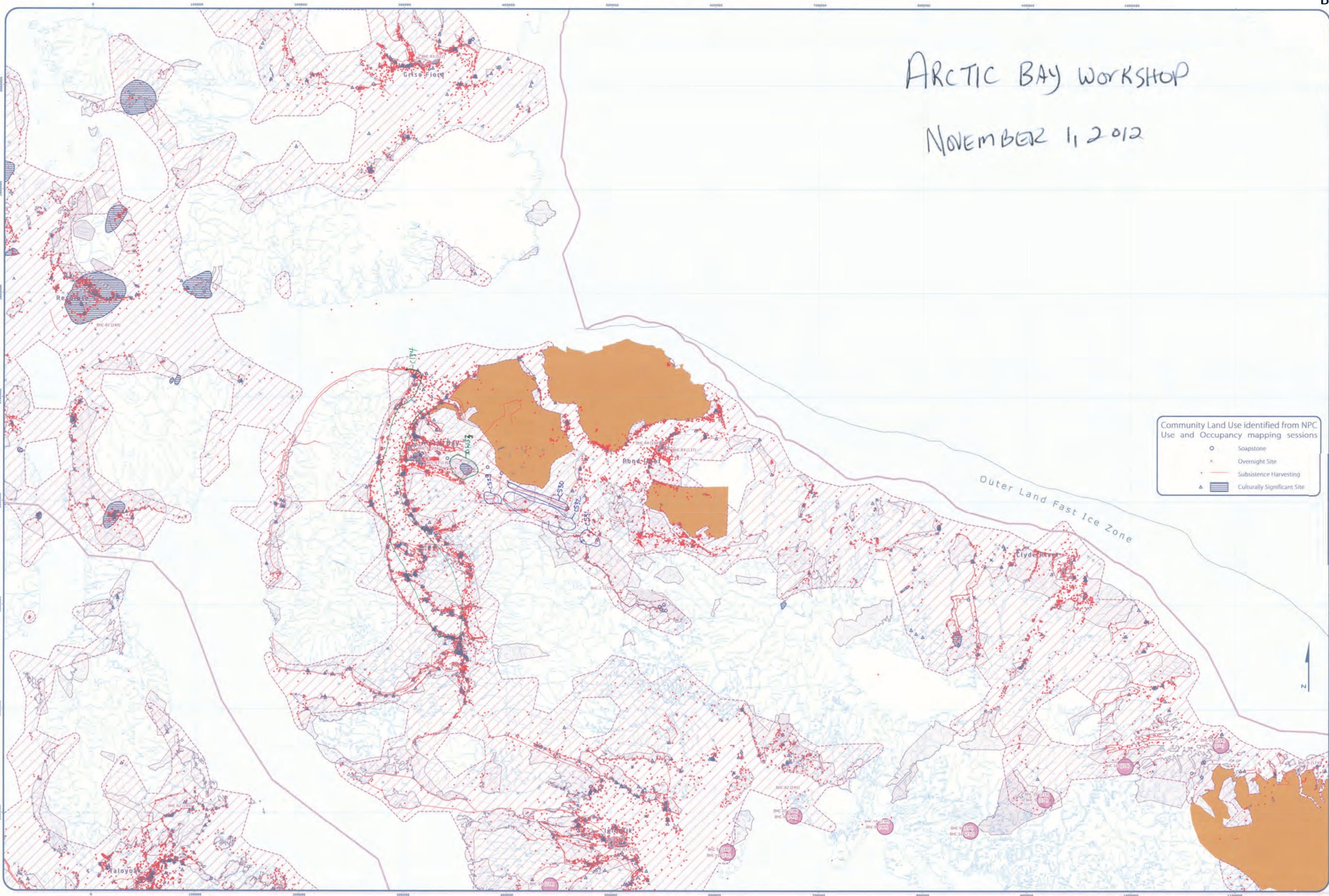
⁹⁶ www.mn.gov

⁹⁷ www.mn.gov

⁹⁸ www.mn.gov

⁹⁹ www.mn.gov

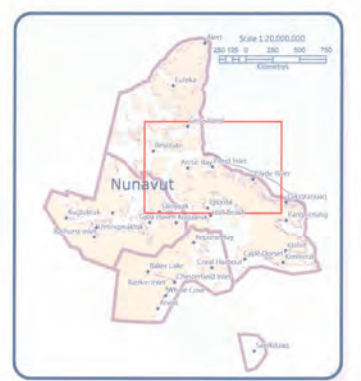
¹⁰⁰ www.mn.gov



ARCTIC BAY WORKSHOP
NOVEMBER 1, 2012

Community Land Use identified from NPC
Use and Occupancy mapping sessions

- Soapstone
- x Overnight Site
- Subsistence Harvesting
- △ Culturally Significant Site



Designations	Permitted Uses	Prohibited Uses
BHC-1	Roads, Railways, Utilities and Corridors	
BHC-2	Roads, Railways, Utilities, and Corridors	
BHC-3	All uses except those Prohibited	Mining
BHC-4	Hydro-electrical and spatial infrastructure	
BHC-5	Tourism, Recreation and Research, Municipal Services	
BHC-6	Municipal Services	All Other Uses
BHC-7	Municipal Services	
BHC-8	Remediation and Remediation Activities	All Other Uses
BHC-9	Remediation and Remediation Activities, DND Operations and Activities	All Other Uses
BHC-10	DND Operations and Activities	All Other Uses

Code	Comments
C129	Contaminated Site, fuel/propane
C130	Contaminated Site, fuel/propane, generators from mine site in 1965
C131	Contaminated Site, fuel/propane, generators from mine site in 1965
C132	Contaminated Site, fuel/propane, generators from mine site in 1965
CS33	Water supply, no development, but don't restrict traditional activities, land use
CS34	Beluga whale, arctic char, seal, bird eggs

Code	Comments
C129	Contaminated Site, fuel/propane
C130	Contaminated Site, fuel/propane, generators from mine site in 1965
C131	Contaminated Site, fuel/propane, generators from mine site in 1965
C132	Contaminated Site, fuel/propane, generators from mine site in 1965
CS33	Water supply, no development, but don't restrict traditional activities, land use
CS34	Beluga whale, arctic char, seal, bird eggs

Arctic Bay
November 1, 2012

1. BHC-1 (100%)
2. BHC-2 (100%)
3. BHC-3 (100%)
4. BHC-4 (100%)
5. BHC-5 (100%)
6. BHC-6 (100%)
7. BHC-7 (100%)
8. BHC-8 (100%)
9. BHC-9 (100%)
10. BHC-10 (100%)

CONFIDENTIAL



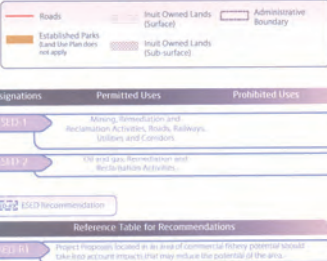
Designations	Permitted Uses	Prohibited Uses
ESED 1	Mining, Reclamation and Reclamation Activities, Utilities and Landfills	
ESED 2	For and use, reclamation and Reclamation Activities	
ESED 3	For and use, reclamation and Reclamation Activities	
ESED 4	For and use, reclamation and Reclamation Activities	
ESED 5	For and use, reclamation and Reclamation Activities	
ESED 6	For and use, reclamation and Reclamation Activities	
ESED 7	For and use, reclamation and Reclamation Activities	
ESED 8	For and use, reclamation and Reclamation Activities	
ESED 9	For and use, reclamation and Reclamation Activities	
ESED 10	For and use, reclamation and Reclamation Activities	
ESED 11	For and use, reclamation and Reclamation Activities	
ESED 12	For and use, reclamation and Reclamation Activities	
ESED 13	For and use, reclamation and Reclamation Activities	
ESED 14	For and use, reclamation and Reclamation Activities	
ESED 15	For and use, reclamation and Reclamation Activities	
ESED 16	For and use, reclamation and Reclamation Activities	
ESED 17	For and use, reclamation and Reclamation Activities	
ESED 18	For and use, reclamation and Reclamation Activities	
ESED 19	For and use, reclamation and Reclamation Activities	
ESED 20	For and use, reclamation and Reclamation Activities	
ESED 21	For and use, reclamation and Reclamation Activities	
ESED 22	For and use, reclamation and Reclamation Activities	
ESED 23	For and use, reclamation and Reclamation Activities	
ESED 24	For and use, reclamation and Reclamation Activities	
ESED 25	For and use, reclamation and Reclamation Activities	
ESED 26	For and use, reclamation and Reclamation Activities	
ESED 27	For and use, reclamation and Reclamation Activities	
ESED 28	For and use, reclamation and Reclamation Activities	
ESED 29	For and use, reclamation and Reclamation Activities	
ESED 30	For and use, reclamation and Reclamation Activities	
ESED 31	For and use, reclamation and Reclamation Activities	
ESED 32	For and use, reclamation and Reclamation Activities	
ESED 33	For and use, reclamation and Reclamation Activities	
ESED 34	For and use, reclamation and Reclamation Activities	
ESED 35	For and use, reclamation and Reclamation Activities	
ESED 36	For and use, reclamation and Reclamation Activities	
ESED 37	For and use, reclamation and Reclamation Activities	
ESED 38	For and use, reclamation and Reclamation Activities	
ESED 39	For and use, reclamation and Reclamation Activities	
ESED 40	For and use, reclamation and Reclamation Activities	
ESED 41	For and use, reclamation and Reclamation Activities	
ESED 42	For and use, reclamation and Reclamation Activities	
ESED 43	For and use, reclamation and Reclamation Activities	
ESED 44	For and use, reclamation and Reclamation Activities	
ESED 45	For and use, reclamation and Reclamation Activities	
ESED 46	For and use, reclamation and Reclamation Activities	
ESED 47	For and use, reclamation and Reclamation Activities	
ESED 48	For and use, reclamation and Reclamation Activities	
ESED 49	For and use, reclamation and Reclamation Activities	
ESED 50	For and use, reclamation and Reclamation Activities	
ESED 51	For and use, reclamation and Reclamation Activities	
ESED 52	For and use, reclamation and Reclamation Activities	
ESED 53	For and use, reclamation and Reclamation Activities	
ESED 54	For and use, reclamation and Reclamation Activities	
ESED 55	For and use, reclamation and Reclamation Activities	
ESED 56	For and use, reclamation and Reclamation Activities	
ESED 57	For and use, reclamation and Reclamation Activities	
ESED 58	For and use, reclamation and Reclamation Activities	
ESED 59	For and use, reclamation and Reclamation Activities	
ESED 60	For and use, reclamation and Reclamation Activities	
ESED 61	For and use, reclamation and Reclamation Activities	
ESED 62	For and use, reclamation and Reclamation Activities	
ESED 63	For and use, reclamation and Reclamation Activities	
ESED 64	For and use, reclamation and Reclamation Activities	
ESED 65	For and use, reclamation and Reclamation Activities	
ESED 66	For and use, reclamation and Reclamation Activities	
ESED 67	For and use, reclamation and Reclamation Activities	
ESED 68	For and use, reclamation and Reclamation Activities	
ESED 69	For and use, reclamation and Reclamation Activities	
ESED 70	For and use, reclamation and Reclamation Activities	
ESED 71	For and use, reclamation and Reclamation Activities	
ESED 72	For and use, reclamation and Reclamation Activities	
ESED 73	For and use, reclamation and Reclamation Activities	
ESED 74	For and use, reclamation and Reclamation Activities	
ESED 75	For and use, reclamation and Reclamation Activities	
ESED 76	For and use, reclamation and Reclamation Activities	
ESED 77	For and use, reclamation and Reclamation Activities	
ESED 78	For and use, reclamation and Reclamation Activities	
ESED 79	For and use, reclamation and Reclamation Activities	
ESED 80	For and use, reclamation and Reclamation Activities	
ESED 81	For and use, reclamation and Reclamation Activities	
ESED 82	For and use, reclamation and Reclamation Activities	
ESED 83	For and use, reclamation and Reclamation Activities	
ESED 84	For and use, reclamation and Reclamation Activities	
ESED 85	For and use, reclamation and Reclamation Activities	
ESED 86	For and use, reclamation and Reclamation Activities	
ESED 87	For and use, reclamation and Reclamation Activities	
ESED 88	For and use, reclamation and Reclamation Activities	
ESED 89	For and use, reclamation and Reclamation Activities	
ESED 90	For and use, reclamation and Reclamation Activities	
ESED 91	For and use, reclamation and Reclamation Activities	
ESED 92	For and use, reclamation and Reclamation Activities	
ESED 93	For and use, reclamation and Reclamation Activities	
ESED 94	For and use, reclamation and Reclamation Activities	
ESED 95	For and use, reclamation and Reclamation Activities	
ESED 96	For and use, reclamation and Reclamation Activities	
ESED 97	For and use, reclamation and Reclamation Activities	
ESED 98	For and use, reclamation and Reclamation Activities	
ESED 99	For and use, reclamation and Reclamation Activities	
ESED 100	For and use, reclamation and Reclamation Activities	

Code	Comments
XD16	Areas where helicopters are dropping off stakes - scattering the caribou. Low flying helicopters. This area is important for Caribou habitat, mining companies fly round, put stakes all over. I think the flying in this area is the reason why Caribou left.
XD17	Diamond exploration happening here



Community Planning Commission
Arctic Bay
Region: Arctic Bay
Community Plan: Arctic Bay
Signature of the Community Planning Commission: [Signature]
Date: [Date]

Working Draft: This regional map data sources are for Land Use Designations and Recommendations sources see draft Nunavut Land Use Plan and background information. This map is to be used for reference purposes only by the NPC. Any further use of this map or data must be authorized by the Nunavut Planning Commission at 1867/881-4625 or email nplanning@npc.nu. This map is to be used for reference purposes only by the NPC. Any further use of this map or data must be authorized by the Nunavut Planning Commission at 1867/881-4625 or email nplanning@npc.nu. This map is to be used for reference purposes only by the NPC. Any further use of this map or data must be authorized by the Nunavut Planning Commission at 1867/881-4625 or email nplanning@npc.nu.



Code	Comments
XD35	Beluga, Char for commercial harvesting. Polar bear important to tourism for sports hunts
XD36	Beluga, Char for commercial harvesting. Polar bear important to tourism for sports hunts

This image shows a single sheet of white paper with horizontal blue lines, resembling notebook paper. The lines are evenly spaced and run across the width of the page. There is no handwriting or other markings on the paper.

Regional Planning Commission
Community Development
Land Use Mapping Section

Community: Arista Bay
Region: _____
Community Plan: Nov 1, 2012
Map #: _____

Signatures of the Commission (2012) is as follows:
Date of Public Meeting: _____

1	<u>Paul Ruff</u>	16
2	<u>JEFF</u>	17
3	<u>William</u>	18
4	<u>J. Garwood</u>	19
5	<u>T. Garwood</u>	20
6	<u>Garwood, J. & S.</u>	21
7		22
8		23
9		24
10		25
11		26
12		27
13		28
14		29
15		30

Signature of Mayor: Bellini

CONFIDENTIAL
C:\dpb\2012\12
Nunat Planning Commission
2012-12-12

CONFIDENTIALITY IS A MUST

[illegible]

Arctic Bay – Group 3 Results





 Roads
 Inuit Owned Lands (Surface)
 Administrative Boundary

 Established Parks (and the Plan does not apply)
 Inuit Owned Lands (Sub-surface)

Designations	Permitted Uses	Prohibited Uses
ART 1	RE USES	

Code	Comments
IU18	We can only identify land by name. Big mountains inland - calving ground for caribou in mountains. High places in the mountains
IU19	Caribou migration happens here, so the area should be expanded here. All along the coast - goose nesting and caribou calving all along same area. This whole area is used by everything relying on the land's resources, caribou, fish, migrating birds
IU20	Should expand area again because it includes summer caribou hunts here. During the summer season it is very important for hunting caribou, egg picking.

[illegible]

Neighborhood Planning Commission
Community Consultation: Final
Land Use Mapping Session


Community: North Bay
Region: _____
Date: Nov 1, 2012 North Bay
Community that
Map # 15

Signatures of the Community (only, if permission
has to conduct mapping session as per form 1)

1	16
2	17
3	18
4	19
5	20
6	21
7	22
8	23
9	24
10	25
11	26
12	27
13	28
14	29
15	30

Signature of Member: _____

CONFIDENTIALITY STAMP


 Coordinate System: EPSG 42304 LCC
 Projection: Lambert Conformal Conic
 Datum: North American 1983
 False Easting: 0.0000
 False Northing: 0.0000
 Central Meridian: -95.0000
 Standard Parallel 1: 49.0000
 Standard Parallel 2: 77.0000
 Latitude Of Origin: 49.0000
 Units: Meter

For Land Use Designations and Recommendations sources see draft Nunavut Land Use Plan and background material data sources documents
 Amphibole created by utilizing Suislaw method in Hillshade toolbar source: material data sources documents
 50 hectares in size. Land outside of Nunavut, courtesy of Government. Administrative boundaries consist of NPD boundaries, which are not shown. The map reflects the current boundaries of the Nunavut Land Use Plan, provided by Natural Resources Canada (cited data). Inuit Owned Lands (courtesy of Nunavut Tunngavik Incorporated). Territorial parks from the Government of Nunavut, Nunavut Parks from Parks Canada
 Data for areas within recommended boundaries obtained from: material data sources documents
 This map is to be used for reference purposes only by the NPD
 Any further use of this map or data must be done by contacting the Nunavut Land Use Planning Commission at: (867) 968-1625 or email: nlupec@nlupec.ca
 Wednesday, October 10, 2012

ARCTIC BAY WORKSHOP
NOVEMBER 1, 2012

This is a blank sheet of white paper with horizontal blue lines, typical of notebook paper. The lines are evenly spaced and run across the width of the page. There is no handwriting or other markings on the paper.

**Revised Planning Commission
Community Consultation Tool
Last Use Mapping Session**

Community: _____

Location: _____

Region: _____

Date: _____

Community MHA: _____

Map # _____

Signatures of the Community signify a permission form to conduct mapping session as follows:

1. _____	16
2. _____	17
3. _____	18
4. _____	19
5. _____	20
6. _____	21
7. _____	22
8. _____	23
9. _____	24
10. _____	25
11. _____	26
12. _____	27
13. _____	28
14. _____	29
15. _____	30

Signature of Major: Mullie

CONFIDENTIAL
C0d5D7n D9b7r7b
Nunavut Planning Commission
aa.7i <e.ah

CONFIDENTIALITY STAMP



Coordinate System: EPSG 42304 LCC
Projection: Lambert Conformal Conic
Datum: North American 1983
False Easting: 0.0000
False Northing: 0.0000
Central Meridian: -95.0000
Standard Parallel 1: 49.0000
Standard Parallel 2: 77.0000
Latitude Of Origin: 49.0000
Units: Meter

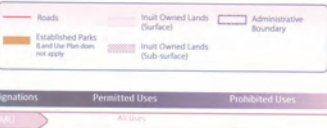
map 5 f Units: Meter

Working Draft Sub-regional map data sources
Land Use Designations and Recommendations sources see draft Nunavut Land Use and Background
information data sources

Included including all existing Swiss method in hillshade toolbox courtesy of ESRI user forums water bodies
by merging all 1:250,000 scale USGS topographic maps of Nunavut and the surrounding watersheds
and rivers in the area. Land outside of Nunavut, courtesy of Geomatics Administrative boundaries courtesy of NRC
Canada, courtesy of Natural Resources Canada (Canada's National Parks and Wildlife Service)
boundaries, provided by Natural Resources Canada (Canada's National Parks and Wildlife Service)
inspired by: Territorial parks from the Government of Nunavut, National Parks from Parks Canada
data for areas within municipal boundaries courtesy of Natural Resources Canada (Canada's National
Parks and Wildlife Service)

This map is to be used for informational purposes only. It is not to be used for any other purpose.
Any further use of this map or its contents must be authorized by contacting the Nunavut Planning
Commission at: (867) 938-4353 or email at npc@nunavut.ca

Thursday, October 28, 2010



Comments Welcome

Joseph Malt

Kapah ToohooGak

Andy Alaoio

Sarah Alaoio

Norah Alaoio

Shippah Oukukuk

Code	Comments
MU31	Important community use area. More restrictions.
MU32	We used to use this land with our forefathers. include the waters around it.
MU33	We used to use all of the land now used by the mine, including Steensby Inlet where the wharf is going to be now.
MU34	All of this is the traditional land used by our fathers. It should not be used to drill.
MU35	Lancaster area included in NMCA study area
MU36	Admiralty Inlet should be added to NMCA study area
MU37	Area included in NMCA study area

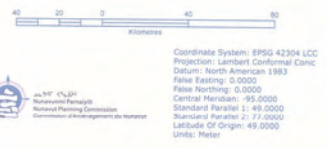
Nunavut Planning Commission
Community Consultation Team
Land Use Mapping Section

Community: _____
Region: _____
Community Email: _____
Phone: _____

Members of the Community (in a position to provide input on the map):

1.	16.
2.	17.
3.	18.
4.	19.
5.	20.
6.	21.
7.	22.
8.	23.
9.	24.
10.	25.
11.	26.
12.	27.
13.	28.
14.	29.
15.	30.

Signature: _____
Date: _____



For Land Use Designations and Recommendations sources see draft Nunavut Land Use Plan and background material data source documents.
Map made by merging at 1:250,000 WTS shapes in Nunavut, version 2.0, and selecting all waterbodies over 50 hectares in size. Land outside of Nunavut, including of Canada, Administrative boundaries consist of NRC draft regional boundaries, created to reflect Regional Inuit Association jurisdictions, combined with municipal boundaries, provided by Natural Resources Canada. Land Use Designation boundaries consist of Nunavut Territory boundaries. Territorial parks from the Government of Nunavut, National Parks from Parks Canada. Data for areas within municipal boundaries obtained from Natural Resources Canada. Land Use Designation boundaries are for reference purposes only by the NRC.
Data for areas within municipal boundaries obtained from Natural Resources Canada. Land Use Designation boundaries are for reference purposes only by the NRC.
Comments at: (867) 983-4625 or email: nrcmap@nrc.ca
Friday, October 12, 2012

Appendix 5: Follow-up Meeting

The NPC returned to the community to review a draft version of this report with the Hamlet Council, Hunters and Trappers Organization, and Community Lands and Resource Committee. The meeting included:

- A presentation of a draft version of this report
- An overview of the mapped information that was recorded for each topic:
 - Protecting and Sustaining the Environment
 - Encouraging Conservation Planning
 - Building Healthier Communities
 - Encouraging Sustainable Economic Development
 - Mixed Use
- Potential changes to the classification of a few mapped areas were discussed and agreed to.
- General discussion and comments including:
 - Timelines for completion
 - Opportunities to provide additional comments