

Summary of Community Meetings on the
Draft Nunavut Land Use Plan
CLYDE RIVER
November 7-8, 2012



Nunavut Planning
Commission



Revised - August 2013

Contents

Introduction.....	3	Appendix 1: Open House	17
1.1 Context	3	Appendix 2: Elected Officials Meeting	18
1.2 Purpose.....	3	Appendix 3: Questions and Answers	19
1.3 Methodology.....	3	Appendix 4: Community Workshop Scanned Maps	20
1.4 Public Awareness	3	Appendix 5: Wrap Up Session	36
1.5 Community Population and Participation.....	3	Appendix 6: Follow-up Meeting	38
 Protecting and Sustaining the Environment	4		
2.1 Areas presented to participants.....	4		
2.2 Areas identified by participants	4		
2.3 Areas of importance to Protecting and Sustaining the Environment..	4		
 Encouraging Conservation Planning.....	6		
3.1 Areas presented to participants	6		
3.2 Areas identified by participants	6		
3.3 Areas of importance to Encouraging Conservation Planning	6		
 Building Healthier Communities	8		
4.1 Areas presented to participants.....	8		
4.2 Areas identified by participants	8		
4.3 Areas of importance to Building Healthier Communities	8		
 Encouraging Sustainable Economic Development.....	10		
5.1 Areas presented to participants.....	10		
5.2 Areas identified by participants	10		
5.3 Areas of importance to Encouraging Sustainable Economic Development	10		
 Mixed Use	12		
6.1 Areas identified in the Draft Plan	12		
6.2 Areas identified by participants	12		
 Overlapping Goals	15		
7.1 Areas identified for multiple goals	15		

Chapter 1: Introduction

1.1 Context

The Nunavut Planning Commission (NPC) is preparing a land use plan to guide and direct resource use and development in the Nunavut Settlement Area (NSA). As part of its efforts, the NPC is facilitating discussions in each Nunavut community on land use and resource management issues. Information that is obtained from these discussions will be used to inform decisions regarding the further development of the Nunavut Land Use Plan (NLUP).

1.2 Purpose

This report presents information obtained during the NPC's visit to the community of Clyde River. The purpose of the report is to inform decisions regarding the further development of the NLUP, ensuring that the plan reflects the priorities and values of residents.

It is important to note that the information contained in the Community Report will be considered in conjunction with all other feedback when revising the DNLUP.

1.3 Methodology

Information was presented to and received from participants in Clyde River in accordance with the Nunavut Planning Commission's Community Engagement Strategy (Engagement Strategy). The Engagement Strategy provides for the following methods for presenting and receiving information;

- **Open house;** information contained in the Draft Nunavut Land Use Plan (DNLUP) was presented on 7 multi lingual large format poster boards. Participants were encouraged to review the posters, ask questions and provide feedback. Comments and questions were recorded by NPC staff and are contained in Appendix 1.
- **Elected Officials Meeting;** The NPC Chairperson and NPC staff met with senior and elected officials in the community. The development process for the DNLUP, its content and next steps were presented.

Comments and questions were recorded during the session and are contained in Appendix 2.

- **Public Workshop;** A formal presentation of the Draft Plan content was provided to participants, including a slide overview of its content. Following the presentation, questions and comments were received from participants. The questions, comments and responses are contained in Appendix 3.

A mapping session followed the presentation of the Draft Plan. The mapping session involved discussions regarding the topics presented in the DNLUP and encouraged participants to identify additional areas and issues important for inclusion in a NLUP. Information received during this session was recorded by NPC staff and is included in Appendix 4.

- **Wrap Up Session;** Staff was available to discuss the areas identified during the mapping and identify any additional issues or areas of interest. Information received during this session was recorded by NPC staff and is included in Appendix 5.

Areas that participants identified during mapping sessions as important to a particular goal have, in the majority of cases, been included in this report as they were recorded. In instances where participants identified an area that was better suited to another goal, the area has been reclassified to the more suitable goal and has been verified as appropriate to do so by the Community.

A follow-up meeting was held on May 31, 2013 to review a draft version of this report with the Hamlet Council, Hunters and Trappers Organization, and Community Lands and Resource Committee. A summary of this meeting is included in Appendix 6.

1.4 Public Awareness

The NPC raised public awareness regarding its visit to Clyde River in accordance with the Engagement Strategy.

The DNLUP and supporting materials were mailed to the Mayor and Council of Clyde River, the Hunters and Trappers

Organizations (HTO) in September 2012. In addition, letters of invitation were sent to the Clyde River Mayor and Council and HTO in advance of the NPC's visit to advise of the meetings and to encourage participation. Follow up phone calls were also made.

Public notice of the various events was provided in the following ways:

- **Nunatsiaq News and Nunavut News/North;** notice of community meetings were posted in both newspapers a minimum of 45 days in advance.
- **Co-op cable TV;** notice of community meetings was run a minimum of 45 days in advance for one week and run again for no less than 14 days before the meetings.
- **Community radio;** notices were read by the hosts and a live interview with the Commission Chairperson was conducted.
- **Community bulletin boards;** notices were posted on bulletin boards around the community 45 days and again 14 days in advance of the meetings.
- **Community mail drop;** one page flyers that announced the meetings and their purpose were delivered to the post office in each community for all mail boxes that accept unaddressed ad-mail.
- **nunavut.ca;** the schedule of community visits, the Draft Plan, and all supporting information was available on the Commission's website.

1.5 Community Population and Participation

Clyde River is a community of approximately 935 people (Statistics Canada, 2011 Census). It is located on the northern coast of Baffin Island (see Figure 1).

The Commission visited the community on November 7-8, 2012. All events occurred as scheduled. The sessions were attended as follows;

- **Elected Officials Meeting;** the Mayor and members of the Hamlet Council and HTO attended the elected officials meeting.
- **Open house;** approximately 30 people attended the open house to review the Draft Plan.
- **Public Workshop;** approximately 55 people attended the presentation of the DNLUP and facilitated mapping sessions. Information was recorded in three separate mapping groups.
- **Wrap Up Session;** approximately 10 people attended the wrap up session.

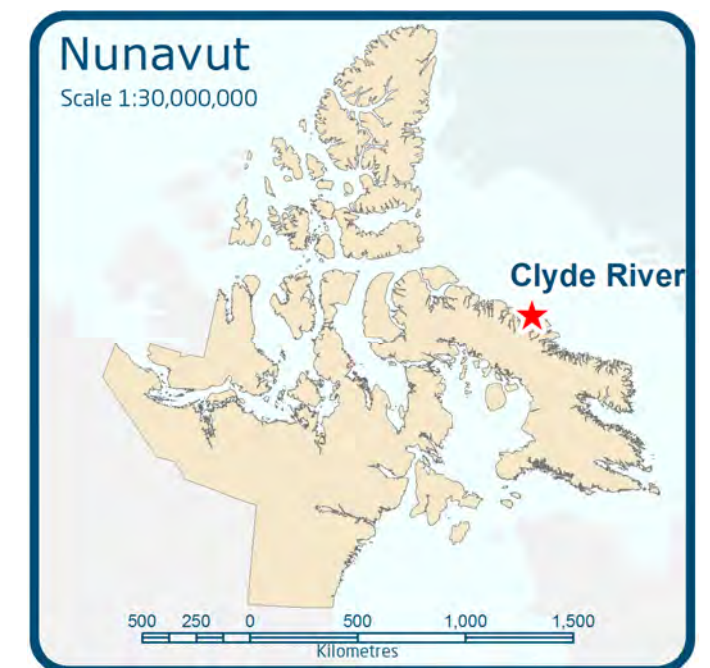


Figure 1. Location of Clyde River

Chapter 2: Protecting and Sustaining the Environment

Protecting and Sustaining the Environment was one of five topics presented to and discussed by participants during the Open House, Elected Officials Meeting, Public Workshop and Wrap up Session, collectively referred to in this document as information sharing and gathering sessions.

2.1 Areas presented to participants

During the information sharing and gathering sessions, participants were presented the following areas and issues as important to Protecting and Sustaining the Environment.

- Key bird habitat sites
- Caribou Habitat sites
- Atlantic Cod Lakes
- Cumulative Impacts
- Transboundary considerations
- Climate change

The importance of these issues and areas to Protecting and Sustaining the Environment was not disputed by participants during the information sharing and gathering sessions.

2.2 Areas identified by participants

Additional areas and issues were identified by participants as important to Protecting and Sustaining the Environment during the information sharing and gathering sessions. These additional areas are;

- Caribou
- Camping areas
- Important bird areas
- Egg collection
- Whale sanctuary

- Marine mammals
- Fish
- Areas where no oil and gas activity wanted

2.3 Areas of importance to Protecting and Sustaining the Environment

Areas and issues discussed during the information sharing and gathering sessions as important to Protecting and Sustaining the Environment are illustrated on Map 1, including areas identified in the DNLUP and areas identified by the community. Scanned images of the maps on which community feedback was recorded can be found in Appendix 4.

Based on discussions with participants, the NPC understands that:

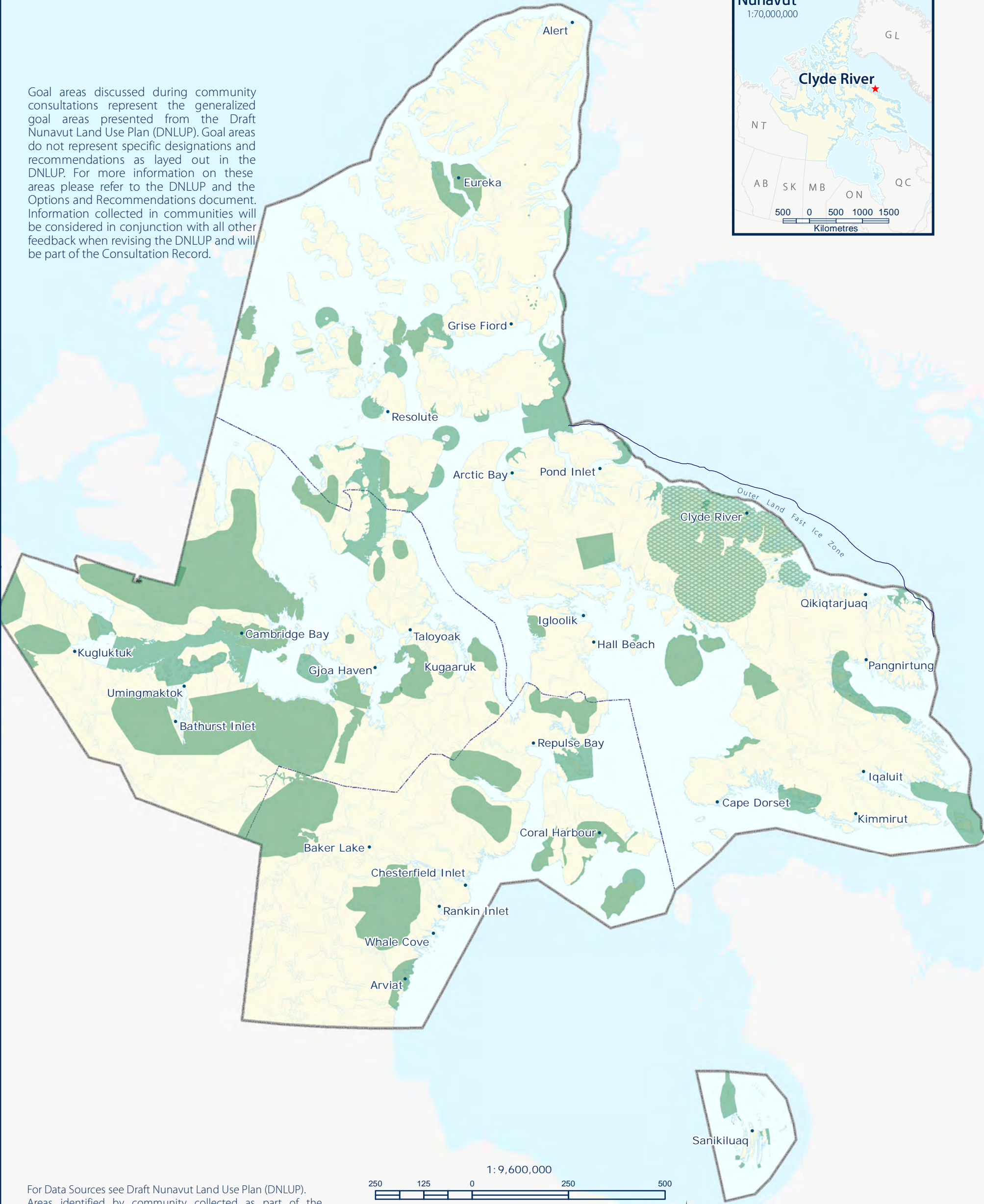
- The areas identified on Map 1 are considered by the Community to be important to Protecting and Sustaining the Environment.
- In these areas, the community would like the NLUP to encourage activities that support environmental protection and management needs, including wildlife conservation, protection and management.

This feedback will be considered in conjunction with all other feedback when revising the DNLUP.



-  **PSE Goal areas from the DNLUP discussed during community consultations**
-  **Additional PSE Goal areas identified during community consultations**

Goal areas discussed during community consultations represent the generalized goal areas presented from the Draft Nunavut Land Use Plan (DNLUP). Goal areas do not represent specific designations and recommendations as layed out in the DNLUP. For more information on these areas please refer to the DNLUP and the Options and Recommendations document. Information collected in communities will be considered in conjunction with all other feedback when revising the DNLUP and will be part of the Consultation Record.



For Data Sources see Draft Nunavut Land Use Plan (DNLUP). Areas identified by community collected as part of the Nunavut Planning Commissions Community Engagement Strategy during the Mapping Sessions for the DNLUP on November 7 & 8, 2012. Maps were digitized at the Nunavut Planning Commission. To be used for illustration purposes only as part of the Draft Nunavut Land Use Plan Consultation Process.



ᓄᓇᓂᓄᓐ ᐸᓄᓐᓂᓄᓐ
Nunavunmi Parnaiyit
Nunavut Planning Commission
Commission d'Aménagement du Nunavut



Projection: Canada Lambert Conformal
Conic, NAD83
Produced by the Nunavut Planning
Commission: (867)983-4625,
npc@nunavut.ca
June-24-13

Chapter 3: Encouraging Conservation Planning

Encouraging Conservation Planning was one of five topics presented to and discussed by the participants during the information sharing and gathering sessions.

3.1 Areas presented to participants

During the information sharing and gathering sessions, participants were presented the following areas and issues as important to Encouraging Conservation Planning;

- National Parks Awaiting Full Establishment
- Proposed National Parks
- National Marine Conservation Areas
- Thelon Wildlife Sanctuary
- Migratory Bird Sanctuaries
- National Wildlife Areas
- National Historic Sites
- Territorial Historic Sites
- Heritage Rivers

The importance of these issues and areas to Encouraging Conservation Planning was not disputed by participants during the information sharing and gathering sessions.

3.2 Areas identified by participants

Additional areas and issues were identified by participants as important to Encouraging Conservation Planning during the information sharing and gathering sessions. These additional areas are.

- Historic areas
- Areas for parks/conservation
- Sod houses

- Historic rivers
- Transportation corridor (to NWA)
- Carving stone
- Tourism areas

3.3 Areas of importance to Encouraging Conservation Planning

Areas and issues discussed during the information sharing and gathering sessions as important to Encouraging Conservation Planning are illustrated on Map 2, including areas identified in the DNLUP and areas identified by the community. Scanned images of the maps on which community feedback was recorded can be found in Appendix 4.

Based on discussions with participants, the NPC understands that:

- The areas identified on Map 2 are considered by the Community to be important to Encouraging Conservation Planning.
- In these areas, the community would like the NLUP to encourage activities that support environmental protection and management needs, including wildlife conservation, protection and management.

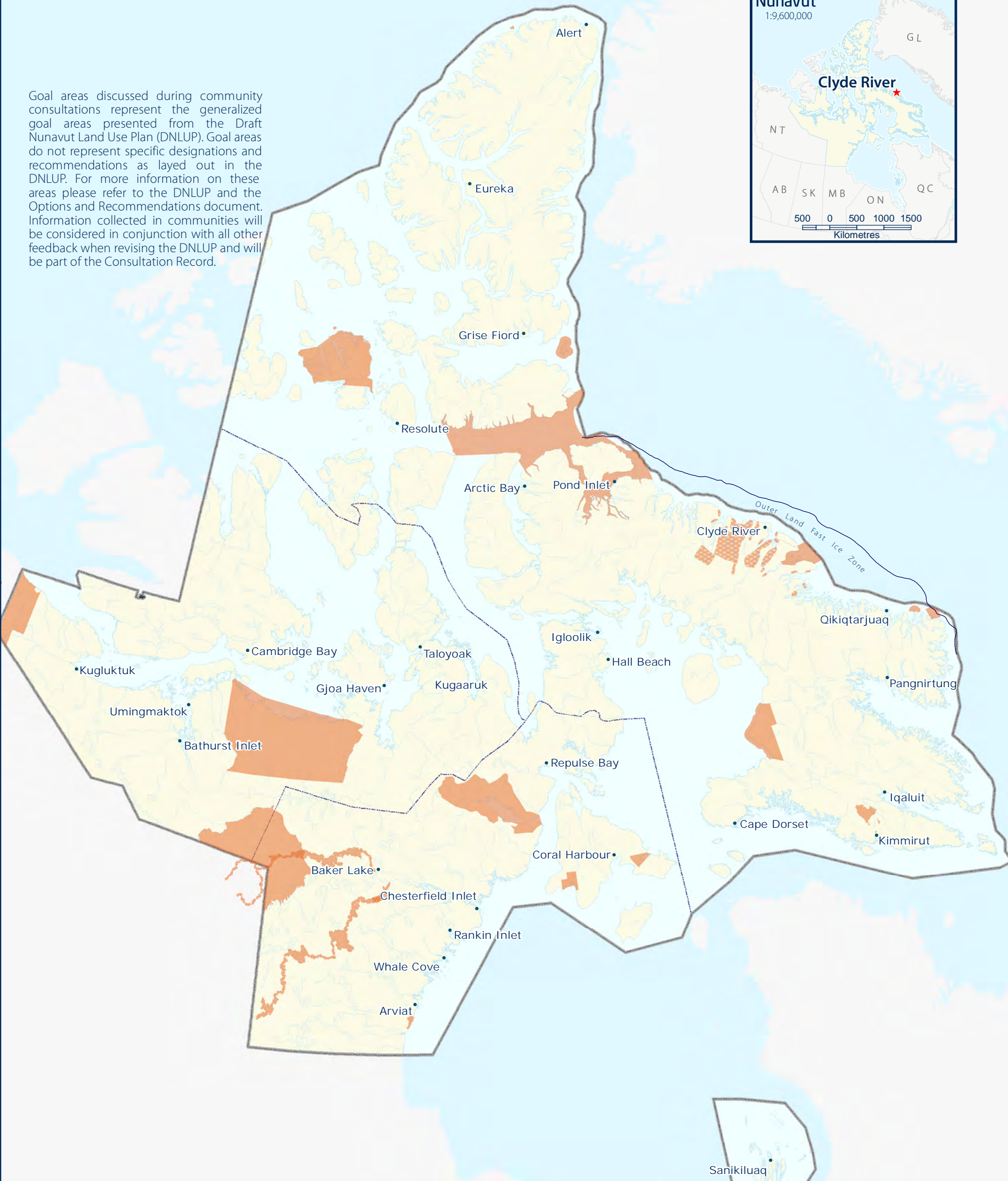
This feedback will be considered in conjunction with all other feedback when revising the DNLUP.



 ECP Goal areas from the DNLUP discussed during community consultations

 Additional ECP Goal areas identified during community consultations

Goal areas discussed during community consultations represent the generalized goal areas presented from the Draft Nunavut Land Use Plan (DNLUP). Goal areas do not represent specific designations and recommendations as layed out in the DNLUP. For more information on these areas please refer to the DNLUP and the Options and Recommendations document. Information collected in communities will be considered in conjunction with all other feedback when revising the DNLUP and will be part of the Consultation Record.



For Data Sources see Draft Nunavut Land Use Plan (DNLUP). Areas identified by community collected as part of the Nunavut Planning Commissions Community Engagement Strategy during the Mapping Sessions for the DNLUP on November 7 & 8, 2012. Maps were digitized at the Nunavut Planning Commission. To be used for illustration purposes only as part of the Draft Nunavut Land Use Plan Consultation Process.



Nunavunmi Parnaiyit
Nunavut Planning Commission
Commission d'Aménagement du Nunavut



Projection: Canada Lambert Conformal
Conic, NAD83
Produced by the Nunavut Planning
Commission: (867)983-4625,
npc@nunavut.ca
June-24-13

Chapter 4: Building Healthier Communities

Building Healthier Communities was one of five topics presented to and discussed by the participants during the information sharing and gathering sessions.

4.1 Areas presented to participants

During the information sharing and gathering sessions, participants were presented the following areas and issues as important to Building Healthier Communities;

- Areas of Community Interest
- Community Land Use
- Transportation Infrastructure
- Unincorporated Communities
- Alternative Energy Sources
- Community drinking water supplies
- Land remediation
- Northern Contaminated Sites Program
- Aerodromes
- Canadian Forces Station
- Northern Warning System sites
- Drinking water
- Transportation corridor (for fishing)
- Access roads
- Archaeological sites
- Old military sites
- Hydroelectric potential
- Ice areas for protection

The importance of these issues and areas to Building Healthier Communities was not disputed by participants.

4.2 Areas identified by participants

Additional areas and issues were identified by participants as important to contributing to the goal of Building Healthier Communities during the information sharing and gathering sessions. These additional areas are;

- Contaminated sites

4.3 Areas of importance to Building Healthier Communities



Areas and issues discussed during the information sharing and gathering sessions as important to Building Healthier Communities are illustrated on Map 3, including areas identified in the DNLUP and areas identified by the community. Scanned images of the maps on which community feedback was recorded can be found in Appendix 4.

Based on discussions with participants, the NPC understands that:

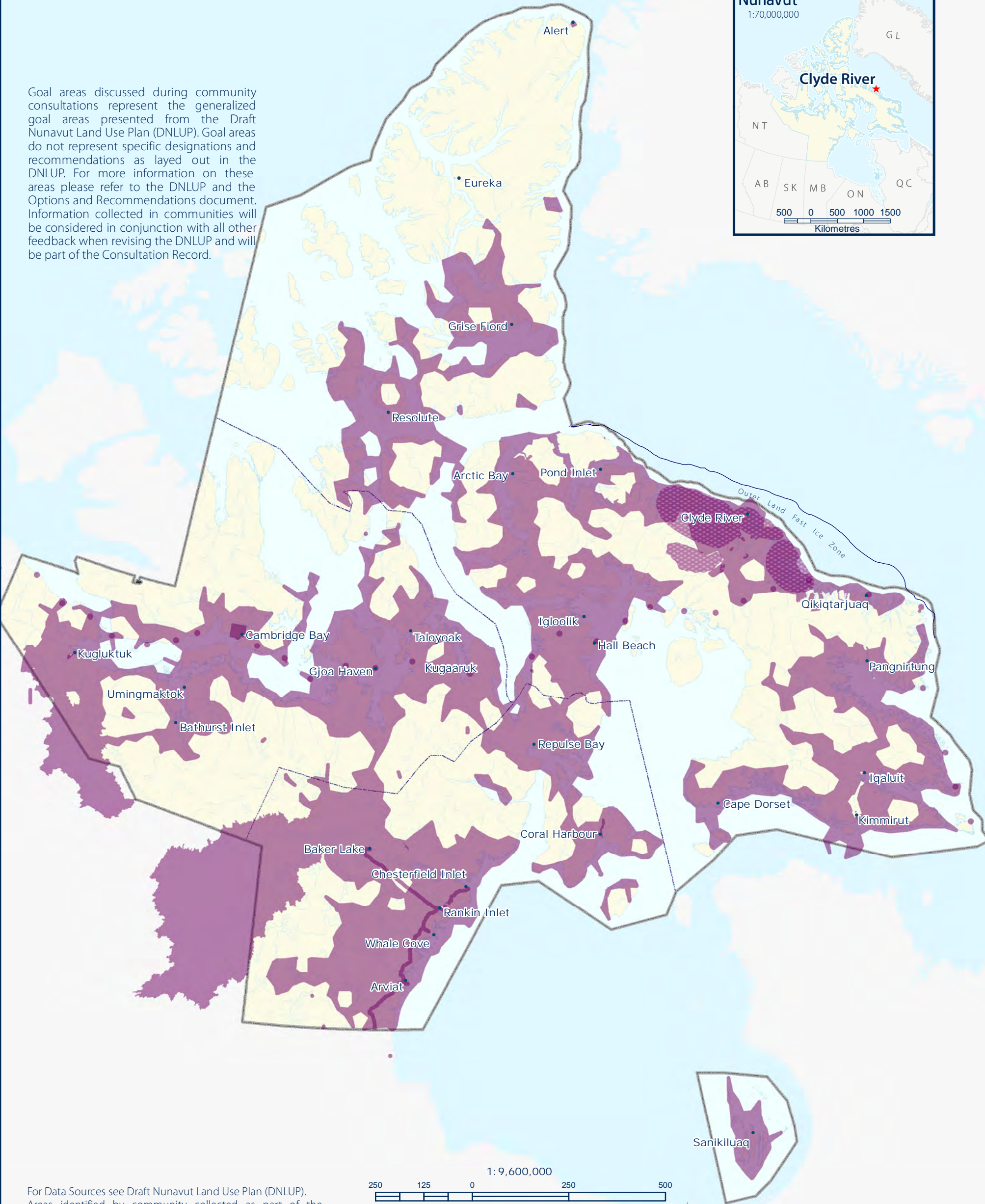
- The areas identified on Map 3 are considered by the Community to be important to Building Healthier Communities.
- In these areas, the community would like the NLUP to encourage activities that support community needs and cultural priorities.

This feedback will be considered in conjunction with all other feedback when revising the DNLUP.

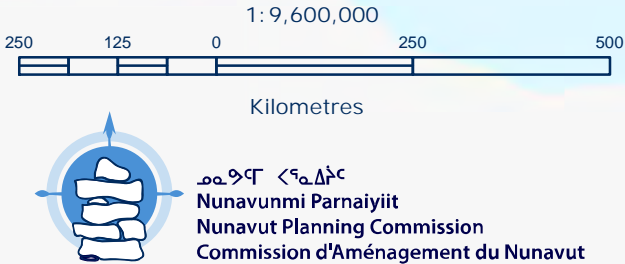


-  BHC Goal areas from the DNLUP discussed during community consultations
-  Additional BHC Goal areas identified during community consultations

Goal areas discussed during community consultations represent the generalized goal areas presented from the Draft Nunavut Land Use Plan (DNLUP). Goal areas do not represent specific designations and recommendations as layed out in the DNLUP. For more information on these areas please refer to the DNLUP and the Options and Recommendations document. Information collected in communities will be considered in conjunction with all other feedback when revising the DNLUP and will be part of the Consultation Record.



For Data Sources see Draft Nunavut Land Use Plan (DNLUP). Areas identified by community collected as part of the Nunavut Planning Commissions Community Engagement Strategy during the Mapping Sessions for the DNLUP on November 7 & 8, 2012. Maps were digitized at the Nunavut Planning Commission. To be used for illustration purposes only as part of the Draft Nunavut Land Use Plan Consultation Process.



ᓄᓇᓂᓄᓐ ᐸᓐᓇᓂᓄᓐ
Nunavunmi Parnaiyit
Nunavut Planning Commission
Commission d'Aménagement du Nunavut

Projection: Canada Lambert Conformal
Conic, NAD83
Produced by the Nunavut Planning
Commission: (867)983-4625,
npc@nunavut.ca
June-24-13

Chapter 5: Encouraging Sustainable Economic Development

Encouraging Sustainable Economic Development was one of five topics presented to and discussed by the participants during the information sharing and gathering sessions.

5.1 Areas presented to participants

During the information sharing and gathering sessions, participants were presented with the following areas important to Encouraging Sustainable Economic Development;

- Mineral Exploration and Production
- Oil and Gas Exploration
- Commercial Fisheries

The importance of these issues and areas to Encouraging Sustainable Economic Development was not disputed by participants during the information sharing and gathering sessions.

5.2 Areas identified by participants

Additional areas and issues were identified by participants as important to Encouraging Sustainable Economic Development during the information sharing and gathering sessions. The additional areas identified are;

- Sports hunting areas for polar bears
- Minerals
- Natural Oil leaks
- Commercial fishing
- Carving stone
- Berries
- Eider ducks

- Caribou
- Tourism
- Hydroelectric potential
- Safe harbour for ships

5.3 Areas of importance to Encouraging Sustainable Economic Development



Areas and issues discussed during the information sharing and gathering sessions as important to Encouraging Sustainable Economic Development are illustrated on Map 4, including areas identified in the DNLUP and areas identified by the community. Scanned images of the maps on which community feedback was recorded can be found in Appendix 4.

Based on discussions with participants, the NPC understands that:

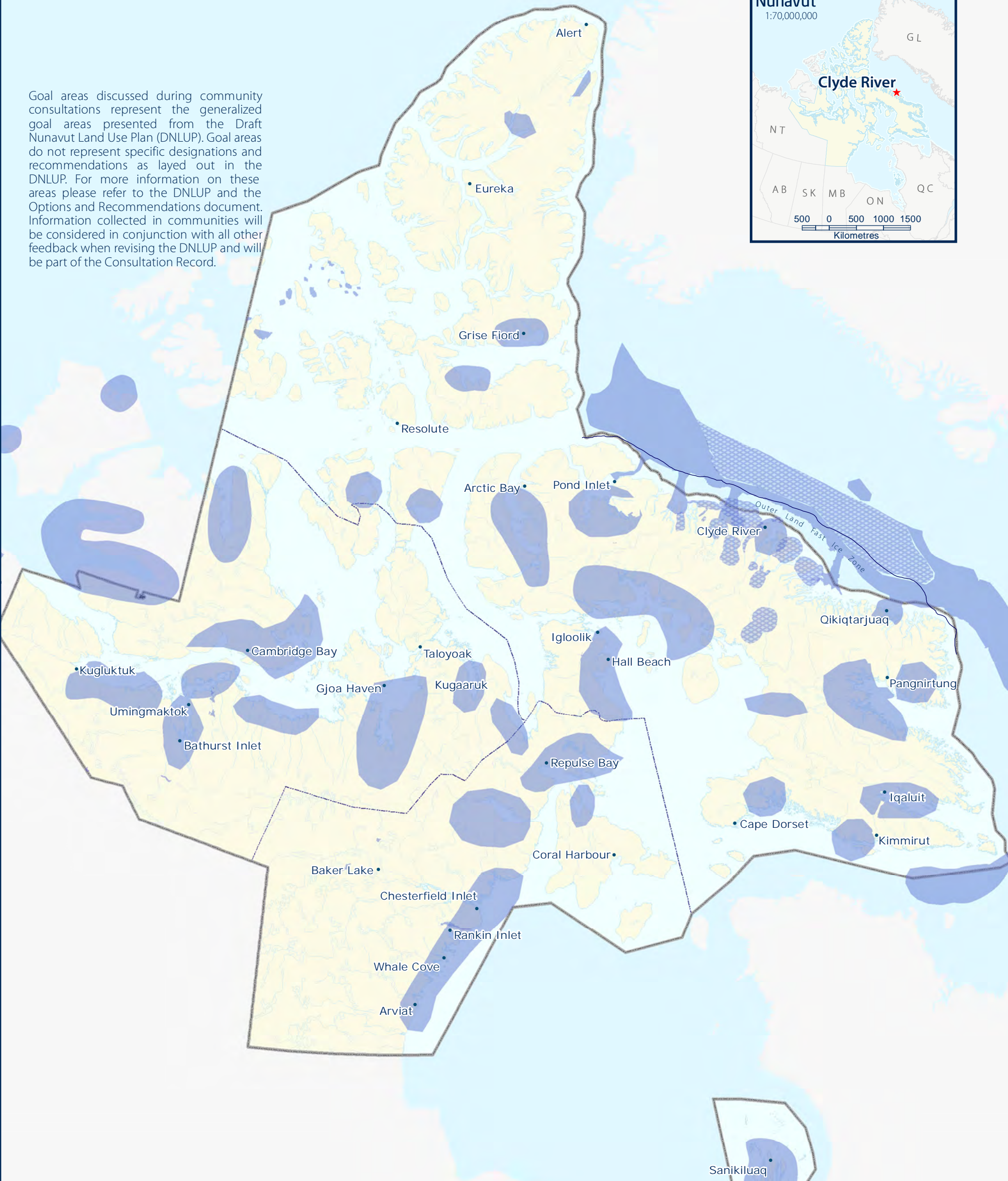
- The areas identified on Map 4 are considered by the Community to be important to Encouraging Sustainable Economic Development.
- In these areas, the community would like the NLUP to encourage activities that support economic opportunities and needs.

This feedback will be considered in conjunction with all other feedback when revising the DNLUP.



-  ESED Goal areas from the DNLUP discussed during community consultations
-  Additional ESED Goal areas identified during community consultations

Goal areas discussed during community consultations represent the generalized goal areas presented from the Draft Nunavut Land Use Plan (DNLUP). Goal areas do not represent specific designations and recommendations as layed out in the DNLUP. For more information on these areas please refer to the DNLUP and the Options and Recommendations document. Information collected in communities will be considered in conjunction with all other feedback when revising the DNLUP and will be part of the Consultation Record.



For Data Sources see Draft Nunavut Land Use Plan (DNLUP). Areas identified by community collected as part of the Nunavut Planning Commissions Community Engagement Strategy during the Mapping Sessions for the DNLUP on November 7 & 8, 2012. Maps were digitized at the Nunavut Planning Commission. To be used for illustration purposes only as part of the Draft Nunavut Land Use Plan Consultation Process.



Projection: Canada Lambert Conformal Conic, NAD83
Produced by the Nunavut Planning Commission: (867)983-4625, npc@nunavut.ca
June-24-13

6.1 Areas identified in the Draft Plan

The DNLUP identifies areas important for a variety of uses. These areas were presented to participants during the workshop as Mixed Use Areas. These areas, as they occur around the community, are illustrated on Map 5.

6.2 Areas identified by participants

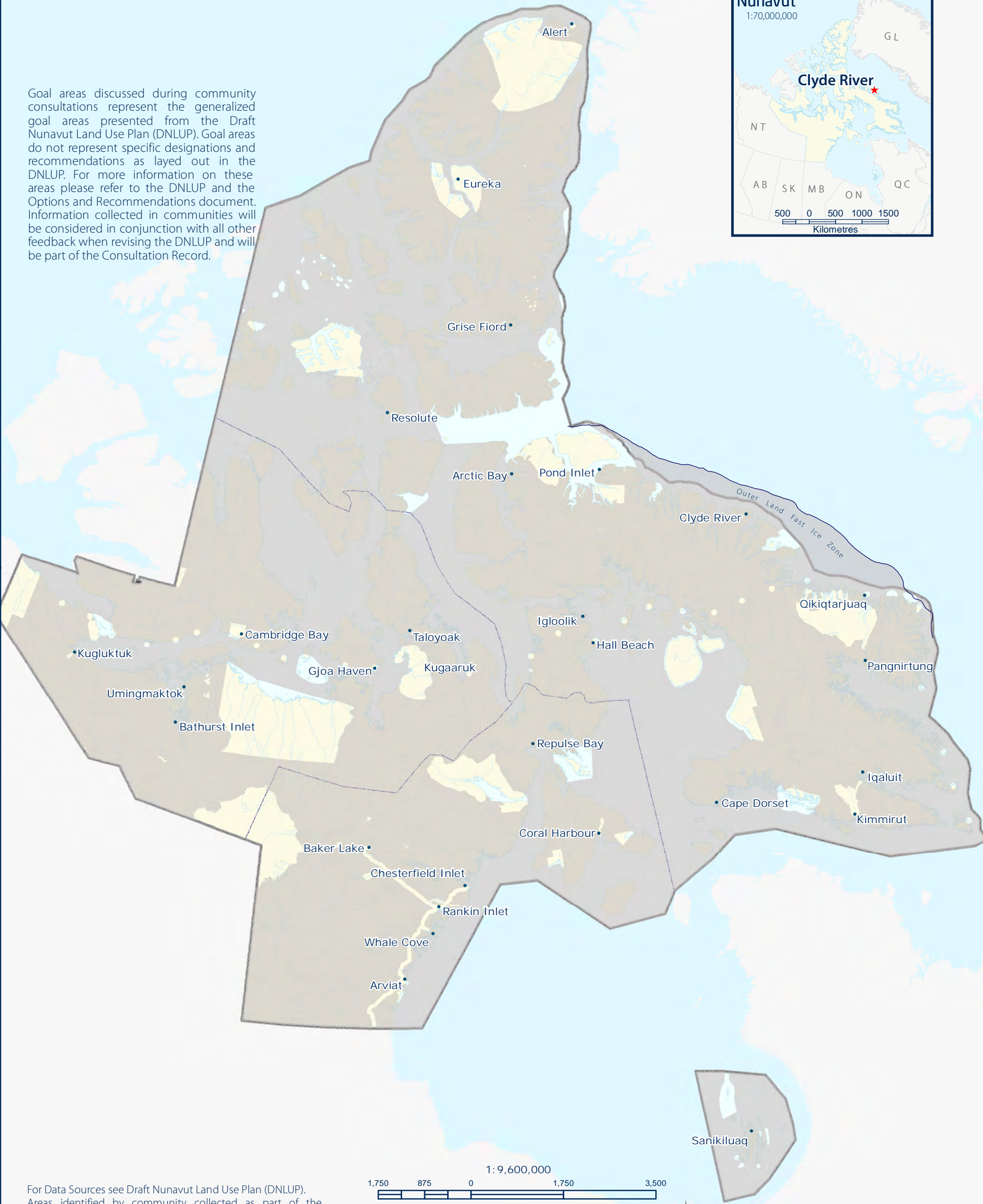
No additional areas were identified as Mixed Use by participants. However, some areas identified as Mixed Use in the DNLUP were considered by participants to require additional protection because of their particular qualities. These areas and the goals they are important for are identified on Map 6.





MU Goal areas from DNLUP discussed during community consultations

Goal areas discussed during community consultations represent the generalized goal areas presented from the Draft Nunavut Land Use Plan (DNLUP). Goal areas do not represent specific designations and recommendations as layed out in the DNLUP. For more information on these areas please refer to the DNLUP and the Options and Recommendations document. Information collected in communities will be considered in conjunction with all other feedback when revising the DNLUP and will be part of the Consultation Record.



For Data Sources see Draft Nunavut Land Use Plan (DNLUP). Areas identified by community collected as part of the Nunavut Planning Commissions Community Engagement Strategy during the Mapping Sessions for the DNLUP on November 7 & 8, 2012. Maps were digitized at the Nunavut Planning Commission. To be used for illustration purposes only as part of the Draft Nunavut Land Use Plan Consultation Process.



ᓄᓇᓂᓄᓐ ᐸᓐᓂᓄᓐ
Nunavunmi Parnaiyiit
Nunavut Planning Commission
Commission d'Aménagement du Nunavut

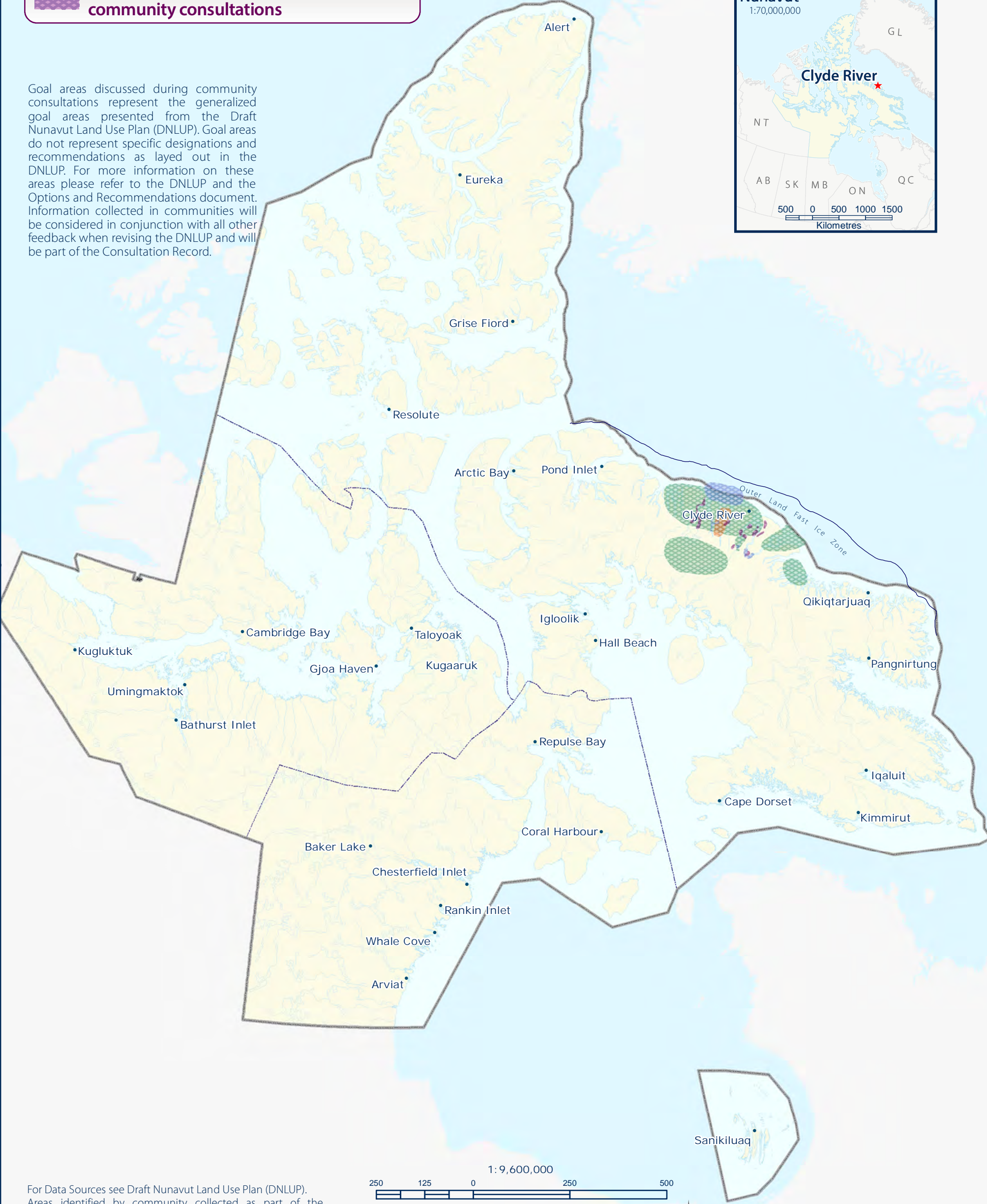


Projection: Canada Lambert Conformal Conic, NAD83
Produced by the Nunavut Planning Commission: (867)983-4625, npc@nunavut.ca
June-24-13

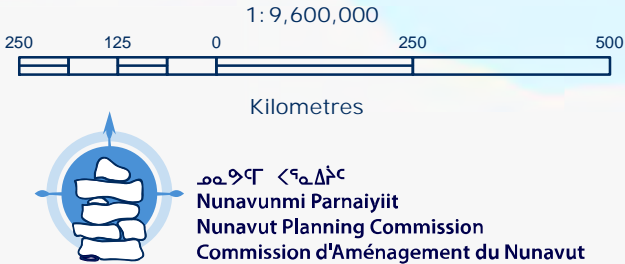
- Additional PSE Goal areas identified during community consultations
- Additional ECP Goal areas identified during community consultations
- Additional BHC Goal areas identified during community consultations

- Additional ESED Goal areas identified during community consultations

Goal areas discussed during community consultations represent the generalized goal areas presented from the Draft Nunavut Land Use Plan (DNLUP). Goal areas do not represent specific designations and recommendations as layed out in the DNLUP. For more information on these areas please refer to the DNLUP and the Options and Recommendations document. Information collected in communities will be considered in conjunction with all other feedback when revising the DNLUP and will be part of the Consultation Record.



For Data Sources see Draft Nunavut Land Use Plan (DNLUP). Areas identified by community collected as part of the Nunavut Planning Commissions Community Engagement Strategy during the Mapping Sessions for the DNLUP on November 7 & 8, 2012. Maps were digitized at the Nunavut Planning Commission. To be used for illustration purposes only as part of the Draft Nunavut Land Use Plan Consultation Process.



Projection: Canada Lambert Conformal Conic, NAD83
Produced by the Nunavut Planning Commission: (867)983-4625, npc@nunavut.ca
September-09-13

7.1 Areas identified for multiple goals

All areas discussed with the community as important for a particular goal are shown on Map 7. In some instances, areas have been identified as important for multiple goals. These areas, and the specific goals they are important to, are also shown on Map 7. In these areas, the NPC will take all of the identified goals and all other feedback into consideration when revising the DNLUP.



Clyde River • Map 7 Overlapping Goal Areas



1:100,000,000

Pond Inlet

Clyde River

Igloolik

Hall Beach

Outer Land

Fast Ice Zone

Pangnirtung



ᓄᓇᓂᓄᓐ ᐸᓐᓇᓐᓴᓐ
Nunavut Planning Commission
Commission d'Aménagement du Nunavut

Label	Goals in Area
A	PSE
B	ECP
C	BHC
D	ESED
E	PSE, ECP
F	BHC, ECP
G	BHC, PSE
H	ESED, ECP
I	ESED, PSE
K	BHC, ESED
L	BHC, PSE, ECP
M	BHC, ESED, ECP
N	BHC, ESED, PSE
O	ESED, PSE, ECP
P	All Goals (BHC, ESED, PSE, ECP)

	1 Goal Identified in area
	2 Goals Identified in area
	3 Goals Identified in area
	4 Goals Identified in area

	Established Parks (Land Use Plan does not apply)
	Administrative Boundary

1:3,000,000

0
50
100

Kilometres

Projection: Lambert Conformal Conic, NAD83
Areas identified by community collected as part of the Nunavut Planning Commissions Community Engagement Strategy during the Mapping Sessions for the DNLUP on November 7 & 8, 2012. Maps were digitized at the Nunavut Planning Commission.
To be used for illustration purposes only as part of the draft Nunavut Land Use Plan consultation process. Produced by the Nunavut Planning Commission (NPC), 28/02/2013.



Appendix 1: Open House

During the open house, participants raised the following issues:

- Precious areas for historic reasons all around Clyde River
- Barnes Ice Cap needs to be identified for protection
- There is hydro potential north of Barnes Ice Cap
- Don't want the land destroyed and don't want cruise ships or sail boats
- Barnes Ice Cap is melting. I want it protected.
- A river flowing from Air Lake should be used for Hydro-electric. It flows all year.
- In the area between Pond Inlet, Clyde River and Igloolik from December to April, caribou is hunted
- Narwhals are hunted between Pond Inlet and Clyde River.
- There are less seal around Clyde River than there used to be.
- There are more Char all around South Baffin than there used to be.
- There are Dorset area Historic campsites around Clyde River.
- Big ships along coast are a problem. Need more tourism.
- IOL selection - people do not understand that community does not own the IOL near community. It belongs to everybody, all Inuit.
- Area North of Clyde River important for Bowhead
- Narwhal sanctuary - place where they calve. Within and south of ECP-1 south of Clyde River
- What about the Territorial Park proposal near Clyde River?
- Development is key
- People are not listening to our concerns - money talks. Mary River is only the beginning.
- Cod fishery important for community use.
- Soapstone and marble are important to the economy. lots found nearby.
- Clyde River has a commercial fishery, but the areas marked aren't right.
- There are cod in the marked turbot areas as well.
- Concerned about gold projects to the south of Clyde River (Baffin Island Gold - viewed during open house on 2011 Active Projects Map)



Appendix 2: Elected Officials Meeting

The elected officials meeting was attended by the Mayor and members of the Hamlet Council and HTO. During the meeting, participants raised the following issues:

- Concerned with oil and gas development and the need for protection
- Shipping is an issue
- There is a need to protect the land and water
- Jobs are also needed



Appendix 3: Questions and Answers

During the community workshop, there was a question and answer period, which included a discussion of the following topics:

- We keep working on maps describing things. Are the maps we already made when we were creating Nunavut obsolete? Are they used anymore?
 - The Commission answered that the land is always changing. What was already written down is already there but we want to add to it. What's in the NLCA hasn't changed.
- When we were creating Nunavut, the areas had to be small. Can we only describe small areas here?
 - The Commission answered that we need to know why it is valuable and needs protection, even if the areas are big.
- We don't want to destroy the land. Some people visit here. When we go North to hunt caribou we saw ships and they left fast. We need to know about this and protect our land. We don't want sail boats coming here without permission. Do they get permission to visit?
 - The Commission answered that concerns over sail ships and cruise ships have to be described so Government can be informed. Government makes those laws.
- White people from the south don't follow the NLCA. Will the land use plan be able to be enforced?
 - The Commission answered that once approved, the plan will be a legally binding document that must be followed.
- Does NIRB approve mining and oil companies or are they there to protect Nunavut?
 - The Commission answered that companies will go to NPC first. If we approve them then it goes to NIRB for second review.
- Mary River, they're not taking care of us. They are a Chinese company and we haven't heard what is happening. Who sold the mine to Chinese people? NIRB?
 - The Commission answered that they don't know anything about the sale of Mary River,

but that it is common for projects to be sold to larger companies.

- Animals never stay in same place. Lands are changing. We can't camp in the same place because the animals move. How do we protect them if they keep moving?
 - The Commission answered that the plan can change.
- We noticed there are poles with numbers on them. I think we're too late.
 - The Commission answered that people can make claims on crown land through the federal government. The Commission wants to hear your concerns.
- Concerned with people making holes in the bottom of nearby lakes this past May (mineral exploration?), and would like to know when companies do that.
 - The Commission answered that these areas and concerns can be described in during the mapping session. Also, federal government and NTI are here and can explain the regulations.
- Thought it was going to get better after we got Nunavut. We need jobs and we need help. There are so many people out of work. Infrastructure needs work (including airport). There is no planning for the community.
- What the Commission is doing is good. It will be good for Inuit. Concerned with how land is being used in China (building large dams and displacing people). Will Nunavut get bigger as a result of the mapping we will do?
 - The Commission answered that Nunavut will not be getting bigger.
- Thank you for working to protect us. It's not right that gold exploration is close to here and we weren't asked. They asked Qikiqtarjuaq instead.
 - The Commission answered that this type of information will be recorded in the mapping session to follow, along with recommendations from residents.



Appendix 4: Community Workshop Scanned Maps

Three groups completed the mapping session to identify important areas. This Appendix contains the maps that were used by participants to identify areas that are important to the following land use planning goals:

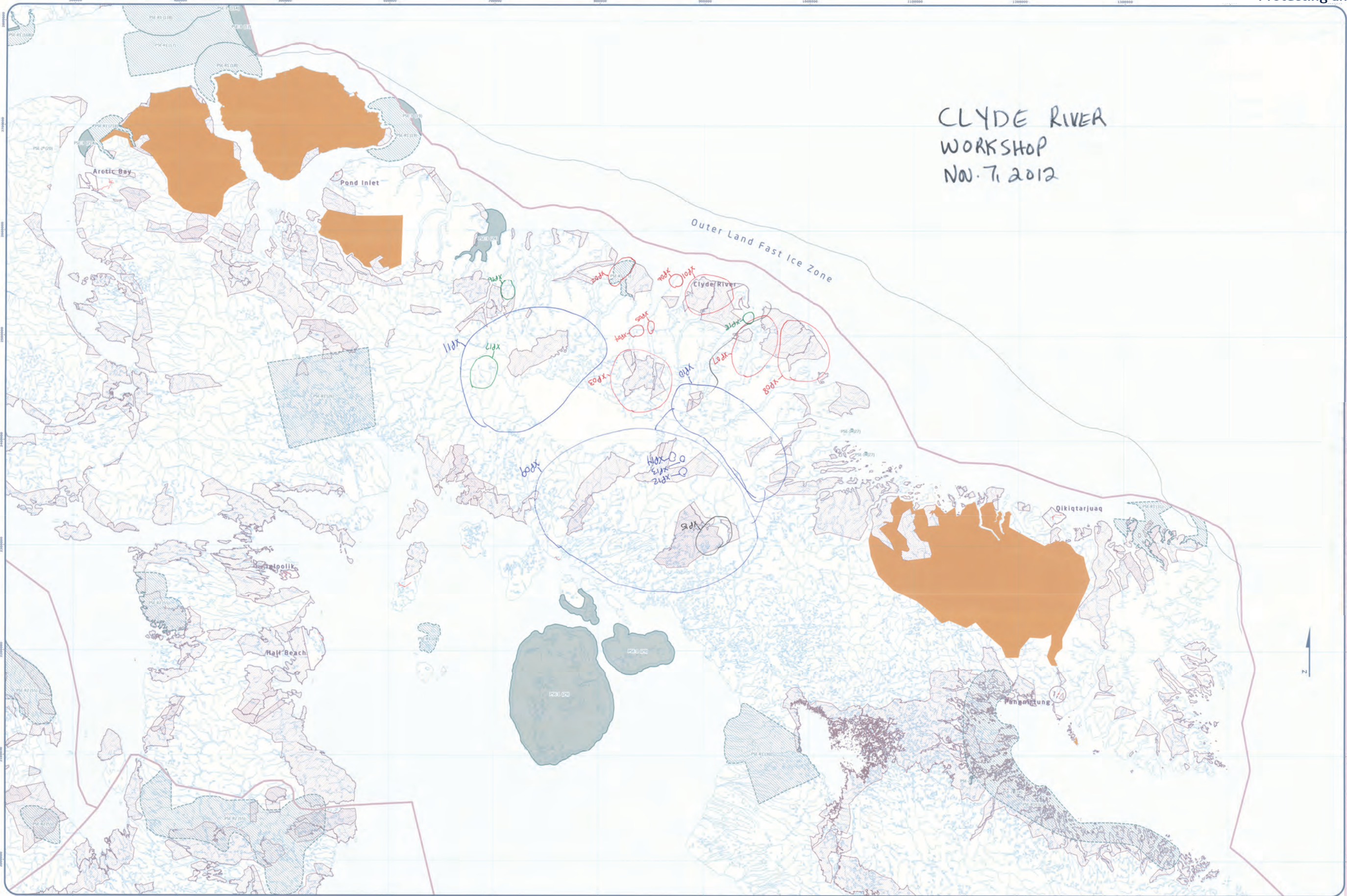
- Protecting and Sustaining the Environment
- Encouraging Conservation Planning
- Building Healthier Communities
- Encouraging Sustainable Economic Development
- Mixed Use

Also included on each map is a reference table that includes the specific values that were identified for the area.

During the mapping portion of the community workshop, the following concerns were raised that did not apply to a specific area that was identified on the maps:

- Want the Niginganiq National Wildlife Sanctuary to be protected
- No oil and gas exploration in the Outer Land Fast Ice Zone
- Do not mind tourism if guides are required to be from Clyde River
- The areas identified as part of community land use (Use and Occupancy Mapping) is true and accurate.
- All water should be kept clean
- Tourists have a tendency to scare wildlife. Kayakers recently scared caribou away.
- Clyde river residents need a proper dock, fishing plants that way they can undertake commercial fishing
- There are no caribou around Clyde River

- We want bird areas protected for food but not closed to mining
- We don't want anything protected because we want jobs



Designations	Permitted Uses	Prohibited Uses
PSE-1	Tourism, Recreation, Research	All Other Uses
PSE-2	Tourism, Recreation, Research	All Other Uses
PSE-3	Tourism, Recreation, Research, Marine Communications and Electrical Cables	All Other Uses

PSA Recommendation

Reference Table for Recommendations

PSE-01	Project Proposals located in a Key Bird Habitat Site should take into account impacts on the migratory birds that rely on the area.
PSE-02	Project Proposals located in sensitive caribou calving grounds should take into account impacts on caribou calving prior calving areas and migration routes.
PSE-03	Project Proposals located in and/or near riparian corridors to cross crossing areas should take into account that may impact the ability of caribou to calve.
PSE-04	Project Proposals located in portions of the local bear sub-watershed should take into account impacts that may impact the conservation value of the watershed.

Code	Comments
XP01	Place for geese during summer
XP02	Egg down birds?
XP03	Ducks and snow goose, for hunting
XP04	Geese and sea gulls, important for eggs
XP05	sea gulls, egg collection
XP06	sea gulls, egg collection
XP07	All types of birds
XP08	geese
XP09	Caribou habitat, protect from development
XP10	Caribou habitat, protect from development
XP11	Caribou habitat, protect from development
XP12	Camp site
XP13	Camp site
XP14	Camp site
XP15	Too much development activity
XP16	Research occurred and left barrels
XP17	Research occurred and left barrels
XP18	Elder ducks

1	16
2	17
3	18
4	19
5	20
6	21
7	22
8	23
9	24
10	25
11	26
12	27
13	28
14	29
15	30

Signature of Member

Adrian

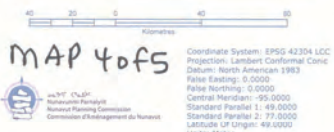
CONFIDENTIAL

ᑕᑕᑕᑕᑕᑕ ᑕᑕᑕᑕᑕᑕ

Nunavut Planning Commission

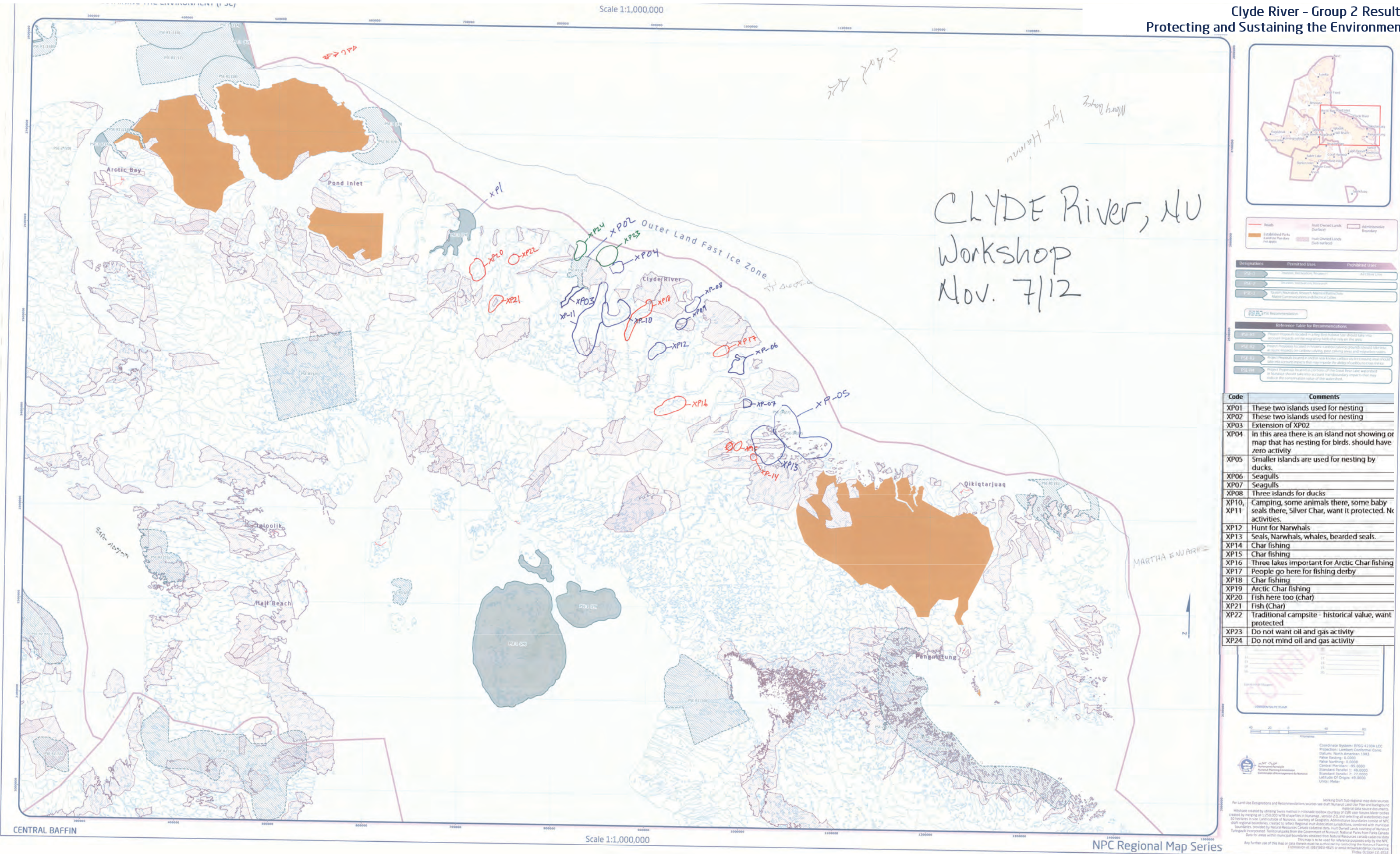
ᑕᑕᑕᑕ ᑕᑕᑕᑕ

CONFIDENTIALITY STATEMENT

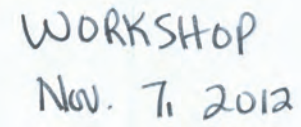


Clyde River – Group 2 Results

Protecting and Sustaining the Environment







Legend:

- Roads
- Established Parks and the Pendone Wetlands (not only)
- Inuit Owned Lands (Greenland)
- Inuit Owned Lands (Subsistence)
- Administrative Boundary

Designations

Designations	Permitted Uses	Prohibited Uses
ICP-B	Education, Recreation, Research	All Other Uses
ICP-C	Transect, Recreation, Research	

ICP-B Recommendation

Reference Table for Recommendations

ICP-B	Project Proponent	Recommendation
ICP-B	Project Proponent	Project Proponent should not allow a storage house that also accept the gasoline and control contained in the Heritage Area's Management plan

Code	Comments
XC19	Historic area, Sod houses
XC20	Historic area, sod homes
XC21	Historic area, sod homes
XC22	Historic area, sod homes
XC23	Historic area, sod homes
XC24	Historic area, sod homes
XC25	Historic area, sod homes
XC26	SOD HOUSE
XC27	SOD HOUSE
XC28	Area for a park/conservation
XC29	Area set aside for park/conservation
XC30	Sod Houses
XC31	Sod Houses
XC32	Sod Houses
XC33	Sod Houses
XC34	Sod Houses
XC35	Sod Houses
XC36	Sod Houses
XC37	Sod Houses
XC38	Sod Houses
XC39	Historic river area
XC40	Historic river area
XC41	Historic river area
XC42	Historic river area
XC43	Historic river area
XC44	Historic river area

Region _____
Title _____
Community Work _____
Date _____

Signatures of the Community group are provided
for information of the Planning Commission.

10
11
12
13
14
15
16
17
18
19
20
21
22
23
24
25
26
27
28
29
30

Signed for Mayor:
Bellini

CONFIDENTIAL
CONFIDENTIAL COMMUNITY
Municipal Planning Commission
encl. 3 encl. 2

MAP 3 of 5

Scale: 0 to 80 Kilometres

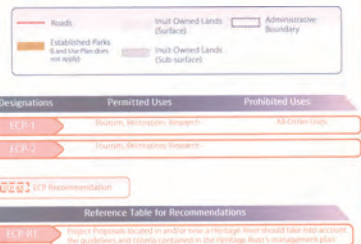
Coordinate System: EPSG 42304 LCC
Projection: Lambert Conformal Conic
Datum: North American 1983
False Easting: 0.0000
False Northing: 0.0000
Central Meridian: -99.0000
Standard Parallel 1: 49.0000
Standard Parallel 2: 77.0000
Latitude Of Origin: 49.0000
Units: Meter

Ministère de l'Énergie
Ministère des Ressources Naturelles
Ministère de l'Environnement et du Changement climatique

[illegible]

Clyde River - Group 2 Results

Encouraging Conservation Planning



Code	Comments
XC25	Would like to see transportation corridor established from Clyde River to NWA
XC26	Quarry site - soapstone - would like to see no activity
XC27	Territorial park was talked about in area (points to area NW of Clyde River). Area being discussed as territorial park



working Draft-See separate map data and metadata files

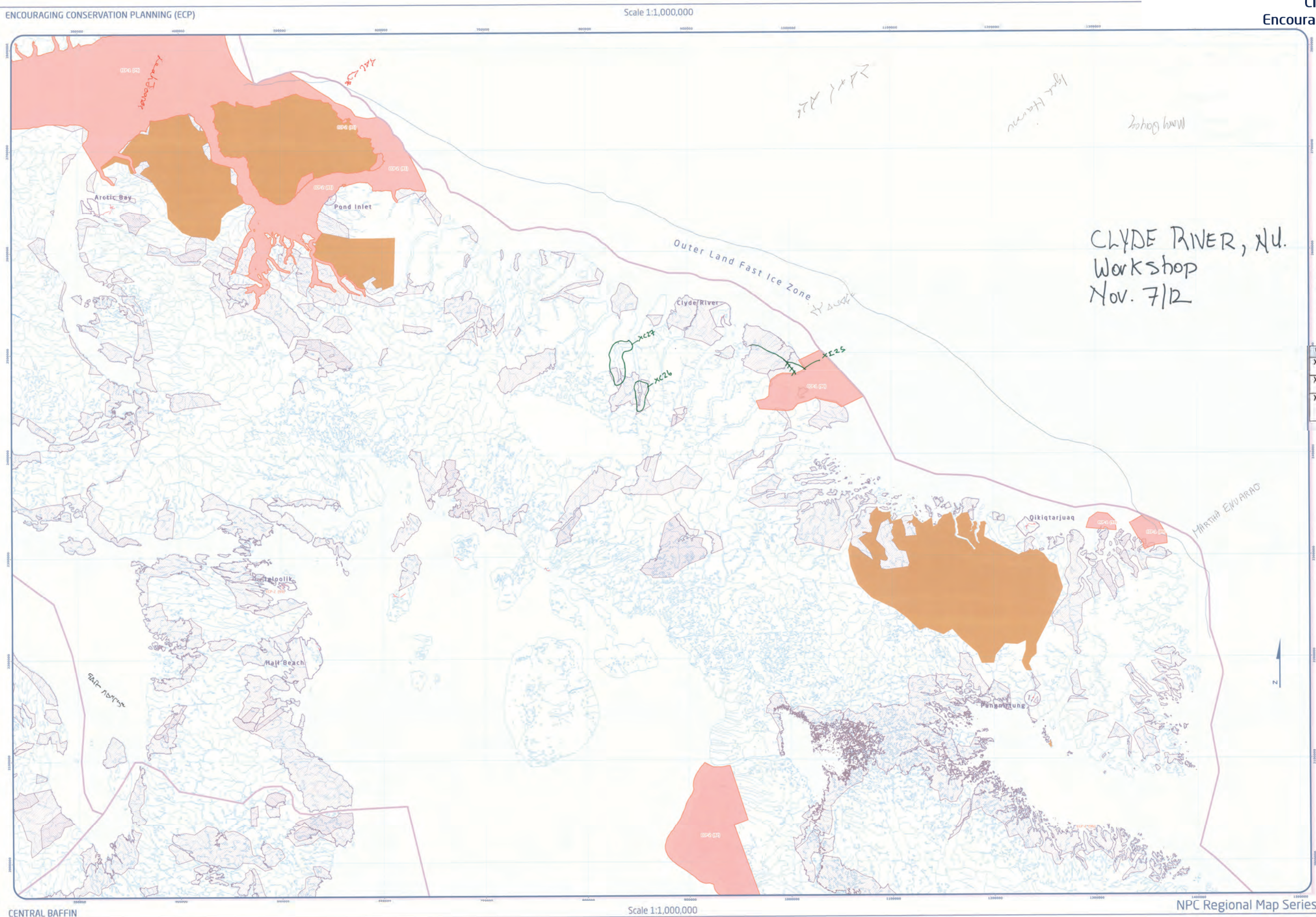
For Land Use Designations and Recommendations sources see draft Nunavut Land Use Plan and background material data source documents

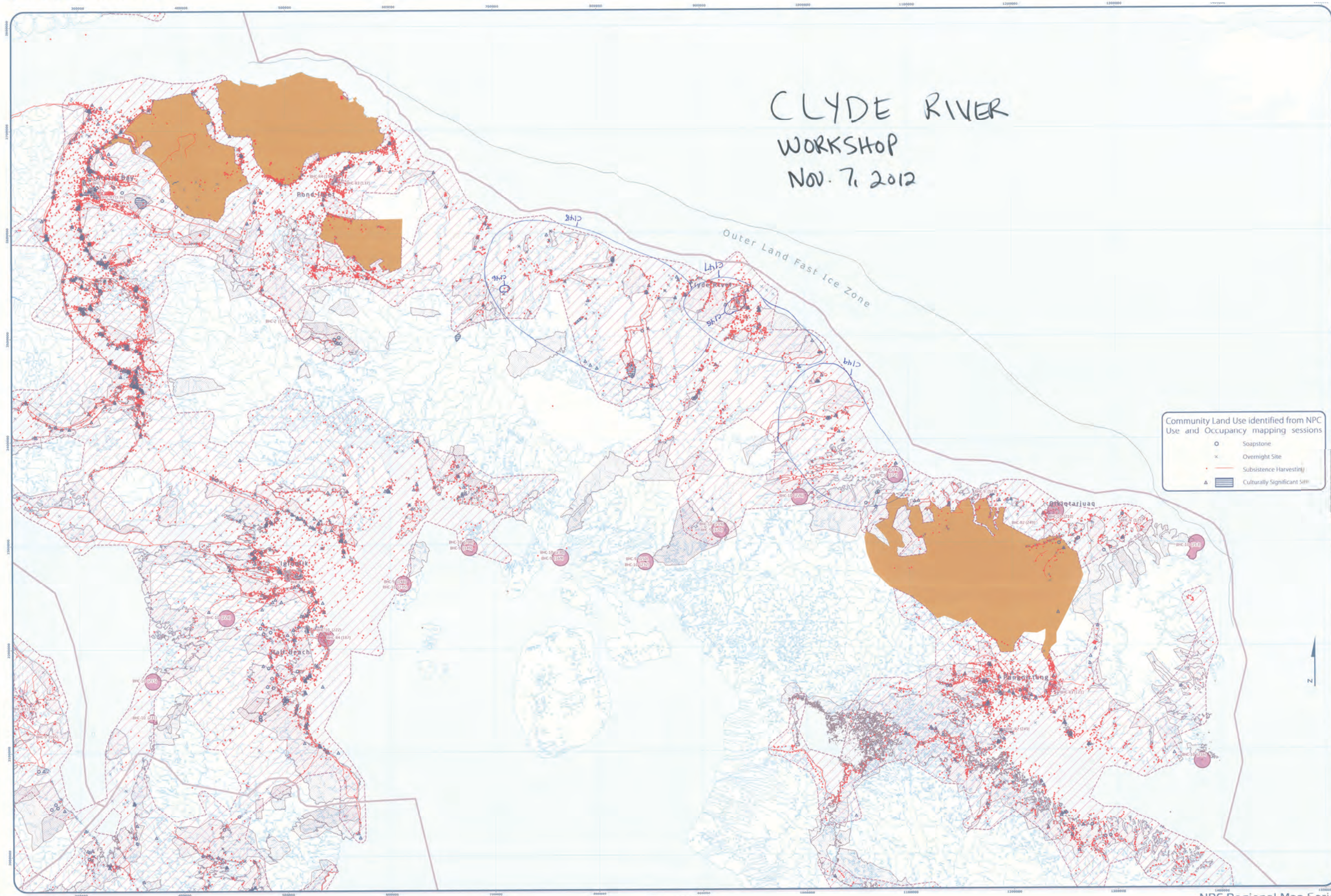
Helikadee created by utilizing Swath's method in Hilaride into Nunavut, version 2.0, and selecting all waterbodies on 50 hectares in land outside of Nunavut, country of Georgia. Administrative boundaries consist of Nunavut, and regional boundaries, created to effect Regional land use conditions, including with municipal boundaries, provided by Natural Resources Canada (cadastre data). Inhabitants of Nunavut Lands (Canada) Tungusik Inuit Community. Territorial parks from the Government of Nunavut, National Parks from Parks Canada. Data for areas within municipal boundaries obtained from Natural Resources Canada (cadastre data).

This map is to be used for reference purposes only by the NP.

Any further use of this map or data should be authorized by contacting the Nunavut Planning Commission on (867) 905-4400 or at np@nrcan.gc.ca

Wednesday October 24, 2018





Designations	Permitted Users	Prohibited Users
BR-C-1	Roads, Railways, Utilities and Corridors	
BR-C-2	Roads, Railways, Utilities and Corridors	
BR-C-3	All users except those Prohibited	Ministry
BR-C-4	Highly electrical and related infrastructure	
BR-C-5	Health, Recreation and Research, Municipal Services	
BR-C-6	Municipal Services	All Other Users
BR-C-7	Municipal Services	
BR-C-8	Remediation and Reclamation Activities	All Other Users
BR-C-9	Remediation and Reclamation Activities, DMO Operations and Activities	All Other Users
BR-C-10	DMO Operations and Activities	All Other Users

III C Recommendation

Reference Table for Recommendations	
BAC- R1	Project Proposals located in the Itakaka River Aqea of Interest should take account impacts on the cultural value of the area.
BAC- R2	Project Proposals located in areas of traditional land use should take into account impacts on the cultural value of the area.
BAC- R3	Project proposals located in a community water supply watershed should take account impacts on the quality and quantity of community drinking water.

Code	Comments
I45	Old Clyde River, contaminated
I46	Fuel barrels from research activities
I47	Clean water used for drinking
I48	Clean water used for drinking
I49	Clean water used for drinking

[illegible]

MAP 2 of 5

Kilometers

Coordinate System: EPSG 4230
Projection: Lambert Conformal
Datum: North American 1983
False Easting: 5,000
False Northing: 0,000
Central Meridian: -95,000
Standard Parallel 1: 49.0000
Standard Parallel 2: 77.0000
Latitude Of Origin: 49.0000
Units: Meter

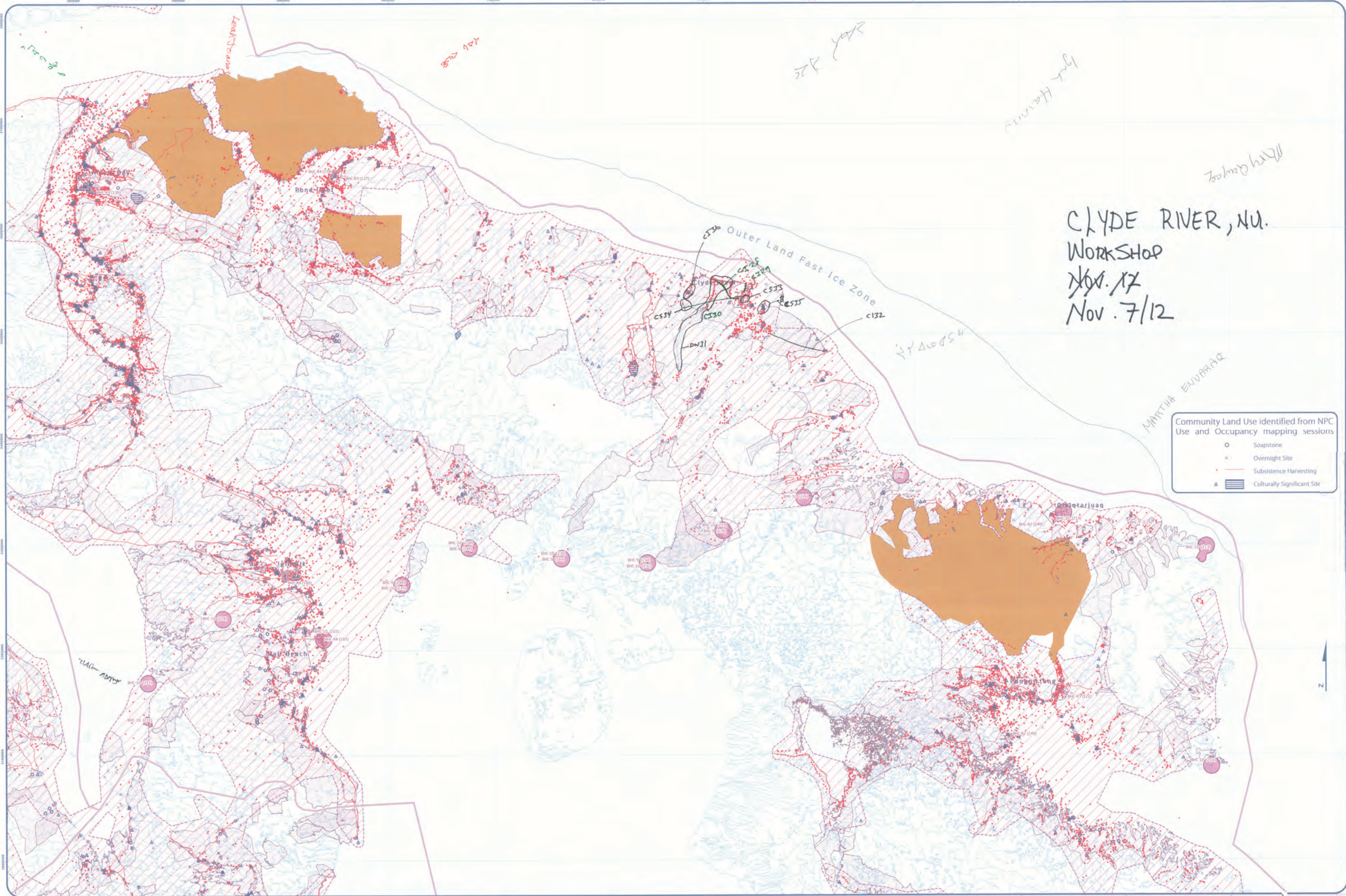
الهيئة العامة للتخطيط العمراني
General Urban Planning Commission
Commission d'aménagement du territoire

Working Draft Sub-regional information
For Land Use Designations and Recommendations sources see draft Nunavut Land Use Plan and material data source.

Use and Occupancy data from NPIC use and occupancy mapping session, L. Hestonaid prepared by utilizing Survey method of Nunavut border courtesy of Esri.
Hestonaid prepared by utilizing 1:250,000 NUTL shapefiles in Iqaluit, version 3.6.2, and salient at least 50 hectares in size. Land outside of Nunavut, courtesy of Geographic Administrative boundaries of regional boundaries, created to reflect Regional Association jurisdictions, combined with boundaries provided by Natural Resources Canada's national data sets. Only owned lands of Nunavut incorporated. Territorial gaps from the Government of Nunavut, National Parks Canada Data for areas within municipal boundaries obtained from Natural Resources Canada.

This map is to be used for reference purposes only.
Any further use of this data or therein must be approved by contacting the Nunavut Commission at: 867-963-4623 or email: nrc@nrc.gc.ca

Thursday, December 10, 2009



Designations	Permitted Uses	Prohibited Uses
BHC-1	Residential, Commercial and Community	
BHC-2	Roads, Railways, Utilities and Corridors	
BHC-3	All uses except those prohibited	Mineral
BHC-4	Hydroelectric and related infrastructure	
BHC-5	Energy, Recreation and Recreation Municipal Services	
BHC-6	Municipal Services	All Other Uses
BHC-7	Municipal Services	All Other Uses
BHC-8	Recreation and Recreation Activities	All Other Uses
BHC-9	Recreation and Recreation Activities	All Other Uses
BHC-10	Recreation and Recreation Activities	All Other Uses

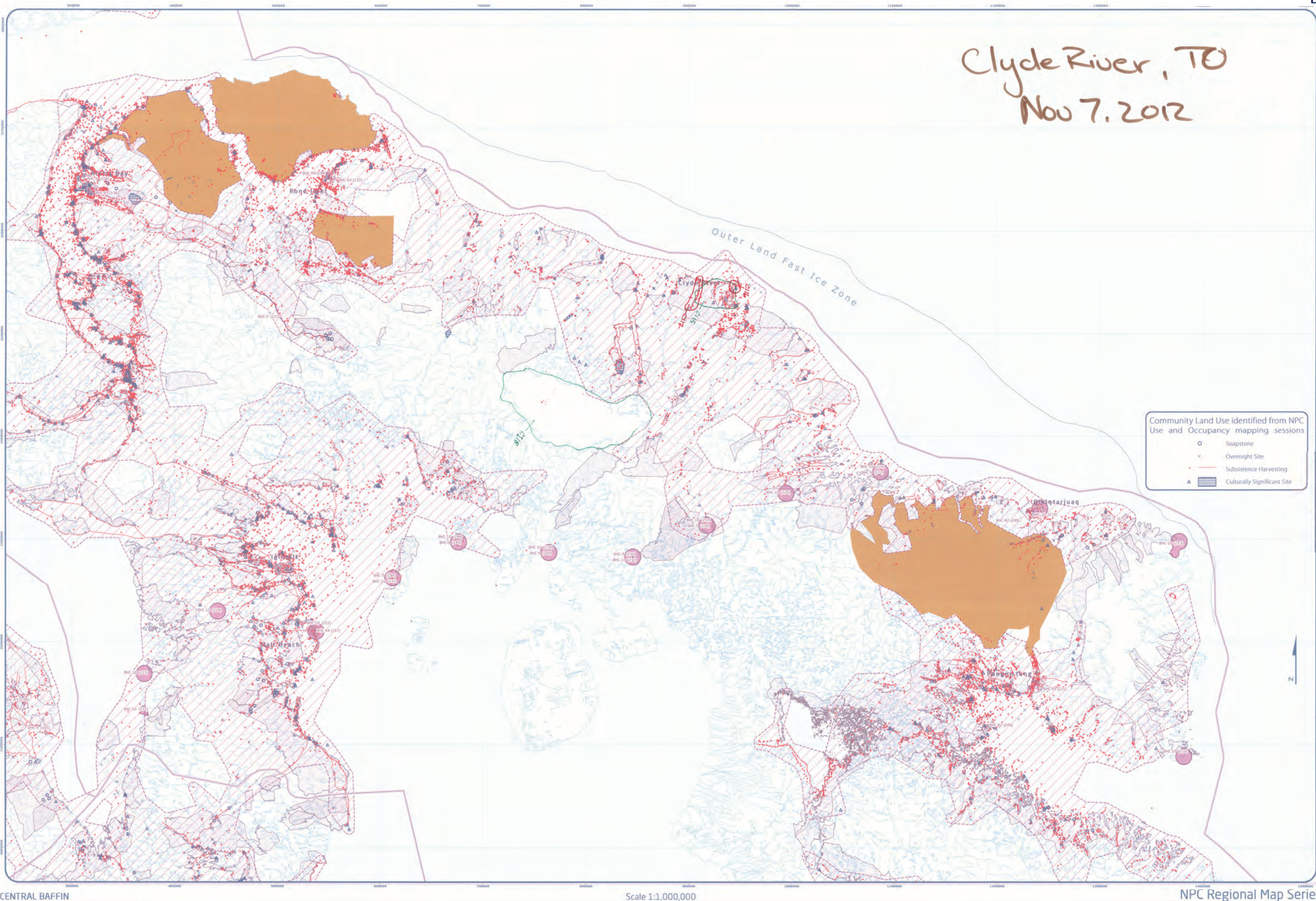
Code	Comments
CI28	Transportation corridor - road to fishing site - existing trail for ATV
CI29	Access road - transportation corridor
CI30	Access road - corridor - bridge required
DW31	Important water supply
CI32	Access road
CS33	Old helium containers - tanks
CS34	Old drums with lots of holes
CS35	Old buildings, barrels
CI36	Archaeological site - should be no activity

Code	Comments
CI28	Transportation corridor - road to fishing site - existing trail for ATV
CI29	Access road - transportation corridor
CI30	Access road - corridor - bridge required
DW31	Important water supply
CI32	Access road
CS33	Old helium containers - tanks
CS34	Old drums with lots of holes
CS35	Old buildings, barrels
CI36	Archaeological site - should be no activity



Coordinate System: EPSG:42304 LCC
Projection: Lambert Conformal Conic
Datum: North American 1983
False Easting: 0.0000
False Northing: 0.0000
Central Meridian: -96.0000
Standard Parallel 1: -69.0000
Standard Parallel 2: -73.0000
Latitude Of Origin: -49.0000
Units: Meter

Working Draft: Sub-regional map data sources
For Land Use Designations and Recommendations sources are draft Nunavut Land Use Plan and background
material data source documents.
Use and Occupancy data from NPC Use and Occupancy mapping sessions, 2024 to 2025.
Habitat created by utilizing Swiss method in Heciate toolset courtesy of ESR user forum water bodies
created by merging at 1:250,000 scale in Nunavut, version 2.0, and selecting all waterbodies
identified in use. Land use of Nunavut, courtesy of Geomatics Administrative boundaries of NPC
draft regional boundaries, created to reflect Regional Association boundaries, combined with municipal
boundaries provided by Natural Resources Canada collected data. Inuit Owned Lands of Nunavut
territories incorporated. Territorial parks from the Government of Nunavut. National Parks from Parks Canada
Data for areas within municipal boundaries obtained from Nunavut Resources Canada collected data.
This map is to be used for reference purposes only by the NPC.
Any further use of this map or data must be authorized by contacting the Nunavut Planning
Commission at 3817(863) 4625 or email nuplanning@nuc.nu.ca
Thursday, October 25, 2024



Clyde River, TO
Nov 7, 2012



Designations	Permitted Uses	Prohibited Uses
BHC-1	Roads, Railways, Utilities and Corridors	
BHC-2	Roads, Railways, Utilities and Corridors	
BHC-3	All uses except those prohibited	Mining
BHC-4	Hydro electrical and related infrastructure	
BHC-5	Recreation and Research	
BHC-6	Municipal Services	All other uses
BHC-7	Municipal Services	
BHC-8	Remediation and Reclamation Activities	All other uses
BHC-9	Remediation and Reclamation Activities	All other uses
BHC-10	Remediation and Reclamation Activities	All other uses

BHC Recommendation	
Reference Table for Recommendations	
BHC-11	Project Proponents located in the Hukuktuq Area of Interest should take into account impacts on the cultural value of the area.
BHC-12	Project Proponents located in areas of traditional land use should take into account impacts on the cultural value of the area.
BHC-13	Project Proponents located in a community water supply watershed should take into account impacts on the quality and quantity of community drinking water.
BHC-14	Project Proponents located in a municipal Aensendene should take into account impacts on aensendene safety.

Code	Comments
C15	If river irrigated to community, they would have better drinking water than they currently have. The water is not adequate because there are too many fish in the lake.
C16	There is an old army base (DEW line site) here
C17	dam for Hydro-electric
C18	Would like runoff from icecap protected. It affects the rivers and our lives.

Map 2 of 5

Community: Clyde River

Region: TO

Scale: 1:1,000,000

Map 2 of 5

Map 2 of 5

Map 2 of 5

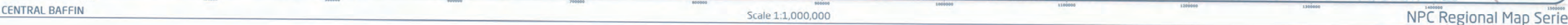
Map 2 of 5

Map 2 of 5

Map 2 of 5

Map 2 of 5

Map 2 of 5



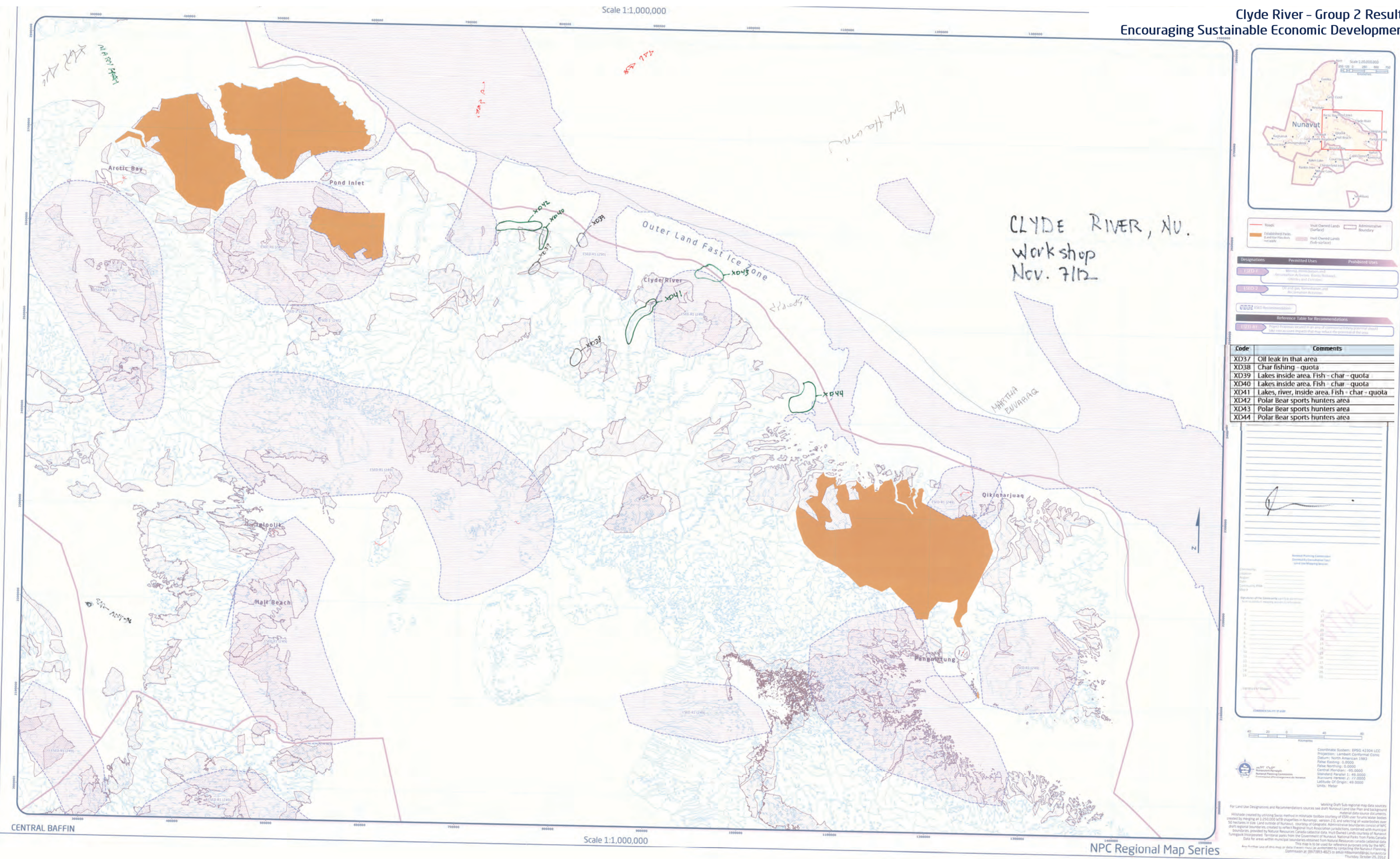
Code	Comments
XD50	Sports hunting, polar bears
XD51	Sports hunting, polar bears
XD52	Sports hunting, polar bears
XD53	Sports hunting, polar bears
XD54	Area of arctic char, seals, narwhale

Original on file at Mississippi
Melie
CONFIDENTIAL
C65D724 416 4756
Nursing Planning Commission
406 416 4756
CONFIDENTIAL BY STAFF

Kilometres

MAP 1 of 5

Working Draft Sub-region
For Land Use Designations and Recommendations sources see draft Nunavut Land Use
material
Hillshade created by utilizing Swiss method in Hillshade toolbox courtesy of ESRI user
created by merging all 1,250,000 m² shapefiles in Nunavut - version 2.0, and selecting
50 hectares in size. Land outside of Nunavut, courtesy of Geographical Administrative bound-
draft regional boundaries, created to reflect Regional Unit Association jurisdictional
boundaries, provided by Natural Resources Canada cadastral data, Inuit Owned Lands
Tunngavik incorporated. Territorial parks from the Government of Nunavut, National Park
Data for areas within municipal boundaries obtained from Natural Resources Canada
This map is to be used for reference purpose
Any further use of this data or data therein must be authorized by reviewing in the
Commission at (867)781-6425 or for further use
Theresa





 Roads
 Established Parks (Land Use Plan does not apply)
 Inuit Owned Lands (Surface)
 Inuit Owned Lands (Sub-surface)
 Administrative boundary

Designations	Permitted Uses	Prohibited Uses
ESD-1	Mixing, Remediation and Reclamation Activities, Road, Bridge, Utility and Construction	
ESD-2	Off-highway, Intermediate and Reclamation Activities	
ESD-3	ESD Recommendation	
Reference Table for Recommendations		
ESD-4	Project Proponents focus on an area of environmental history potential threat but not recognize impacts that may result in the control of the area.	

Code	Comments
XD19	Turbot area is much bigger
XD20	Tourism
XD21	dam for Hydro-electric
XD22	Arctic Char - fishery
XD23	Arctic Char
XD24	Arctic Char
XD25	Boast to get out of bad weather. Safe haven for ships. Could be an economic opportunity.
XD26	Arctic Char
XD27	Arctic Char
XD28	Marble stone for commercial mining. It's good quality.
XD29	Marble stone
XD30	Iron Mining exploration
XD31	Gold on Inuit owned land
XD32	Part of gold area
XD33	mining purposes

Northwest Publishing Corporation
Conservation Observation Form
Land Use Mapping Section

Client Name: Chrysler River

Location: 703 NM

Region: _____

State: _____

Community Name: South of 20th

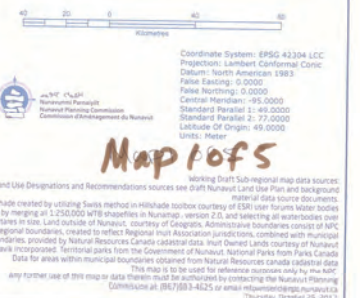
Map # _____

Signatures of the Community group, as permission
has been obtained, mapping location as determined

1	<u>Randy Engelbrecht</u>	18
2	<u>Arne Hult</u>	17
3	<u>and Bob</u>	16
4	<u>and</u>	15
5	<u>SLAPPS</u>	14
6	<u>at</u>	13
7	<u>at</u>	12
8	<u>at</u>	11
9	<u>at</u>	10
10	<u>at</u>	9
11	<u>at</u>	8
12	<u>at</u>	7
13	<u>at</u>	6
14	<u>at</u>	5
15	<u>at</u>	4

Signature of Mapper: _____

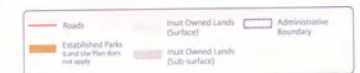
2000/06/06/07/08/09/10/11/12/13/14/15/16/17/18/19/20



Code	Comments
MU55	Bowhead Whale area
MU56	Barns Ice Cap - need to protect it. Serves all of Nth Baffin Communities.
MU57	Glaciers need protection
MU58	People were base jumping here, 5000ft walls of ice
MU59	5 different types of minerals. Area is rich with carving stone. Protect from development.
MU60	Area of marble for calving stone.
MU61	Area of historic significance, protect from development
MU62	Turbot, halibut area
MU63	Narwhale area
MU64	Oil potential here. need to see what everyone in the community wants before an opinion is given on if to drill for it or not.
MU65	Research station
MU66	Research station

[illegible]

Clyde River – Group 2 Results



Designations	Permitted Uses	Prohibited Uses
<div> <div> </div> <div> All uses </div> </div>		
Code	Comments	
MU45	Marble in this area - has been told that it is used for tiles, countertops	
MU46	All animals important habitat	
MU47	Caribou, hares, marble in this area too - plaid and white	
MU48	Blackberries	
MU49	Blackberries and blueberries, main areas - ladies go to	
MU50	Berries	
MU51	Island inside for berries	
MU52	Berries	
MU53	Berries	
MU54	Blackberries & Eider ducks	
MU55	Berries	
MU56	Blackberries, caribou, Arctic Char	

Clyde River, TD
Nov 7 2012



Designations	Permitted Uses	Prohibited Uses
All	All Users	

Code	Comments
MU34	Protected due to Narwhales- no mining
MU35	No mining, no oil - proposed Territorial Park

[illegible]

Personal Reading & Annotation
Community Consultation Page

Use this Mapping Section

Community:
Location:
Date:
Page:
Community #/PA
Map #

Cycle 2
TO 3rd

Signature of the Community signatory in partnership
from community mapping section as of: _____

1. North Loughmore 256
2. Agnew 257
3. Agnew 258
4. Agnew 259
5. Agnew 260
6. Agnew 261
7. Agnew 262
8. Agnew 263
9. Agnew 264
10. Agnew 265
11. Agnew 266
12. Agnew 267
13. Agnew 268
14. Agnew 269
15. Agnew 270
16. Agnew 271

Signature: _____

CONFIDENTIALITY OF DATA

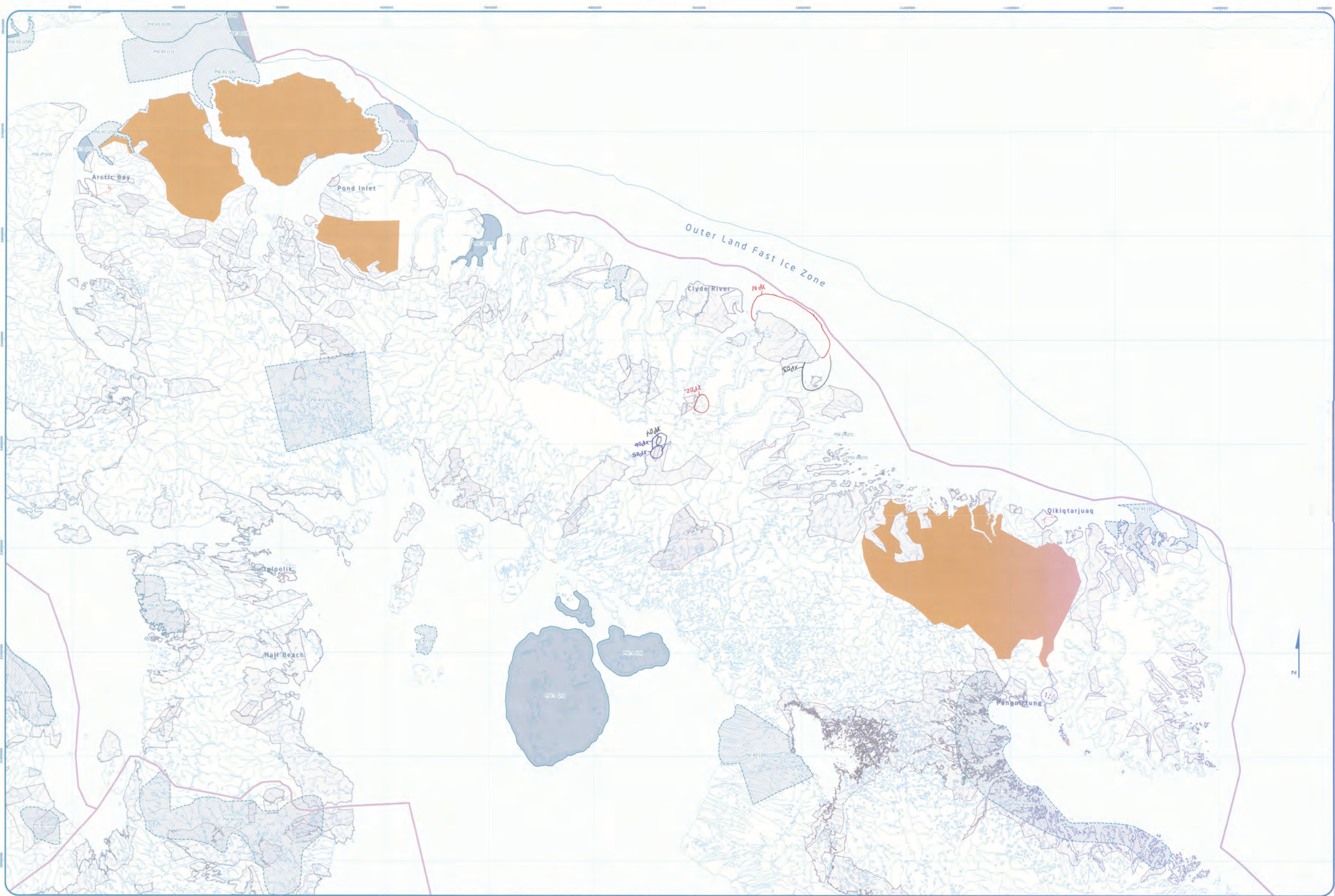


Map 50f 5

[illegible]

Appendix 5: Wrap Up Session

A small group of participants returned to identify additional important areas during the wrap up session. All additional areas were recorded on a single map.



Designations	Permitted Uses	Prohibited Uses
PSE-1	Science, Recreation, Research	All Other Uses
PSE-2	Science, Recreation, Research	
PSE-3	Science, Recreation, Research, Marine Observation, Marine Communications and Electrical Cables	

Reference Table for Recommendations	
PSE-1	Project proposals located in a Key Bird Habitat Site should take into account impacts on the migratory birds that rely on the area.
PSE-2	Project proposals located in historic caribou calving grounds should take into account impacts on caribou calving, birch calving areas and migration routes.
PSE-3	Project proposals located in historic caribou calving grounds should take into account impacts that may impact the ability of caribou to cross the ice.
PSE-4	Project proposals located in portions of the Great Bear Lake watershed in Nunavut should take into account transboundary impacts that may reduce the conservation value of the watershed.

Code	Comments
XP01	Lots of animals. Seals, polar bears, fish, walrus, bowhead, narwhal calving (area for protection) concerned about activities.
XP02	good area for minerals (gold). Interest in exploration
XP03	whaling station. 3 white people buried on island. Extension to XP01.
XP04	twin otter airstrip
XP05	needs cleaning up. Lots of barrels.
XP06	contaminated site. Used to be a camp (white people)

Nunavut Planning Commission
Community Consultation Form
Land Use Mapping Section

Community: _____
Region: _____
Community: _____

Signature of the Community: _____
Date: _____

Signature of the Commission: _____
Date: _____



Coordinate System: EPSG:42304 LCC
Projection: Lambert Conformal Conic
Datum: North American 1983
False Easting: 0.0000
False Northing: 0.0000
Central Meridian: -95.0000
Standard Parallel 1: 49.0000
Standard Parallel 2: 77.0000
Latitude Of Origin: 49.0000
Units: Meter

Appendix 6: Follow-up Meeting

The NPC returned to the community to review a draft version of this report with the Hamlet Council, Hunters and Trappers Organization, and Community Lands and Resource Committee. The meeting included:

- A presentation of a draft version of this report
- An overview of the mapped information that was recorded for each topic:
 - Protecting and Sustaining the Environment
 - Encouraging Conservation Planning
 - Building Healthier Communities
 - Encouraging Sustainable Economic Development
 - Mixed Use
- Potential changes to the classification of a few mapped areas were discussed and agreed to.
- General discussion and comments including:
 - Timelines for completion
 - Opportunities to provide additional comments
 - Changes to the plan once it is approved.
 - Animals are always moving and the plan needs to be able to react to the changing the conditions. I appreciate that we can change the plan in the future.