

Summary of Community Meetings on the
Draft Nunavut Land Use Plan

RESOLUTE

January 28-29, 2013



Nunavut Planning
Commission



Revised - September 2013

Contents

Introduction.....	3	Appendix 1: Open House	17
1.1 Context	3	Appendix 2: Elected Officials Meeting	18
1.2 Purpose.....	3	Appendix 3: Questions and Answers	19
1.3 Methodology.....	3	Appendix 4: Community Workshop Scanned Maps	20
1.4 Public Awareness	3	Appendix 5: Wrap Up Session	26
1.5 Community Population and Participation.....	3	Appendix 6: Follow-up Meeting	27
 Protecting and Sustaining the Environment	4		
2.1 Areas presented to participants.....	4		
2.2 Areas identified by participants	4		
2.3 Areas of importance to Protecting and Sustaining the Environment..	4		
 Encouraging Conservation Planning.....	6		
3.1 Areas presented to participants	6		
3.2 Areas identified by participants	6		
3.3 Areas of importance to Encouraging Conservation Planning	6		
 Building Healthier Communities	8		
4.1 Areas presented to participants.....	8		
4.2 Areas identified by participants	8		
4.3 Areas of importance to Building Healthier Communities	8		
 Encouraging Sustainable Economic Development.....	10		
5.1 Areas presented to participants.....	10		
5.2 Areas identified by participants	10		
5.3 Areas of importance to Encouraging Sustainable Economic Development	10		
 Mixed Use	12		
6.1 Areas identified in the Draft Plan	12		
6.2 Areas identified by participants	12		
 Overlapping Goals	15		
7.1 Areas identified for multiple goals	15		

Chapter 1: Introduction

1.1 Context

The Nunavut Planning Commission (NPC) is preparing a land use plan to guide and direct resource use and development in the Nunavut Settlement Area (NSA). As part of its efforts, the NPC is facilitating discussions in each Nunavut community on land use and resource management issues. Information that is obtained from these discussions will be used to inform decisions regarding the further development of the Nunavut Land Use Plan (NLUP).

1.2 Purpose

This report presents information obtained during the NPC's visit to the community of Resolute. The purpose of the report is to inform decisions regarding the further development of the NLUP, ensuring that the plan reflects the priorities and values of residents.

It is important to note that the information contained in the Community Report will be considered in conjunction with all other feedback when revising the DNLUP.

1.3 Methodology

Information was presented to and received from participants in Resolute in accordance with the Nunavut Planning Commission's Community Engagement Strategy (Engagement Strategy). The Engagement Strategy provides for the following methods for presenting and receiving information;

- **Open house;** information contained in the Draft Nunavut Land Use Plan (DNLUP) was presented on 7 multi lingual large format poster boards. Participants were encouraged to review the posters, ask questions and provide feedback. Comments and questions were recorded by NPC staff and are contained in Appendix 1.
- **Elected Officials Meeting;** The NPC Chairperson and NPC staff met with senior and elected officials in the community. The development process for the DNLUP, its content and next steps were presented.

Comments and questions were recorded during the session and are contained in Appendix 2.

- **Public Workshop;** A formal presentation of the Draft Plan content was provided to participants, including a slide overview of its content. Following the presentation, questions and comments were received from participants. The questions, comments and responses are contained in Appendix 3.

A mapping session followed the presentation of the Draft Plan. The mapping session involved discussions regarding the topics presented in the DNLUP and encouraged participants to identify additional areas and issues important for inclusion in a NLUP. Information received during this session was recorded by NPC staff and is included in Appendix 4.

- **Wrap Up Session;** Staff was available to discuss the areas identified during the mapping and identify any additional issues or areas of interest. Information received during this session was recorded by NPC staff and is included in Appendix 5.

Areas that participants identified during mapping sessions as important to a particular goal have, in the majority of cases, been included in this report as they were recorded. In instances where participants identified an area that was better suited to another goal, the area has been reclassified to the more suitable goal and has been verified as appropriate to do so by the Community.

A follow-up meeting was held on May 16, 2013 to review a draft version of this report with the Hamlet Council, Hunters and Trappers Organization, and Community Lands and Resource Committee. A summary of this meeting is included in Appendix 6.

1.4 Public Awareness

The NPC raised public awareness regarding its visit to Resolute in accordance with the Engagement Strategy.

The DNLUP and supporting materials were mailed to the Mayor and Council of Resolute, the Hunters and Trappers

Organizations (HTO) in September 2012. In addition, letters of invitation were sent to the Resolute Mayor and Council and HTO in advance of the NPC's visit to advise of the meetings and to encourage participation. Follow up phone calls were also made.

Public notice of the various events was provided in the following ways:

- **Nunatsiaq News and Nunavut News/North;** notice of community meetings were posted in both newspapers a minimum of 45 days in advance.
- **Co-op cable TV;** notice of community meetings was run a minimum of 45 days in advance for one week and run again for no less than 14 days before the meetings.
- **Community radio;** notices were read by the hosts and a live interview with the Commission Chairperson was conducted.
- **Community bulletin boards;** notices were posted on bulletin boards around the community 45 days and again 14 days in advance of the meetings.
- **Community mail drop;** one page flyers that announced the meetings and their purpose were delivered to the post office in each community for all mail boxes that accept unaddressed ad-mail.
- **nunavut.ca;** the schedule of community visits, the Draft Plan, and all supporting information was available on the Commission's website.

1.5 Community Population and Participation

Resolute is a community of approximately 215 people (Statistics Canada, 2011 Census). It is located on Cornwallis Island (see Figure 1).

The Commission visited the community on January 28-29, 2013. All events occurred as scheduled. The sessions were attended as follows;

- **Elected Officials Meeting;** the Mayor and members of the Hamlet Council and HTO attended the elected officials meeting.
- **Open house;** approximately 10 people attended the open house to review the Draft Plan.
- **Public Workshop;** approximately 15 people attended the presentation of the DNLUP and facilitated mapping sessions. Information was recorded in 1 mapping group.
- **Wrap Up Session;** approximately 5 people attended the wrap up session.

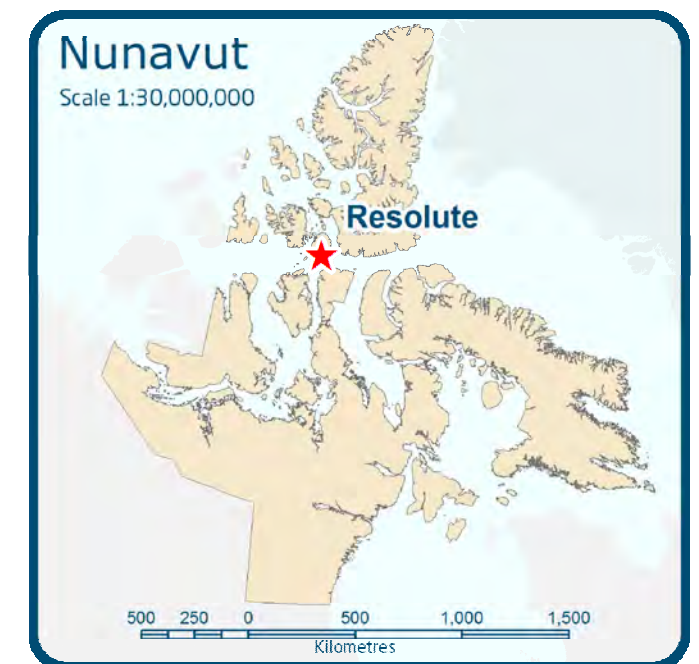


Figure 1. Location of Resolute.

Chapter 2: Protecting and Sustaining the Environment

Protecting and Sustaining the Environment was one of five topics presented to and discussed by participants during the Open House, Elected Officials Meeting, Public Workshop and Wrap up Session, collectively referred to in this document as information sharing and gathering sessions.

2.1 Areas presented to participants

During the information sharing and gathering sessions, participants were presented the following areas and issues as important to Protecting and Sustaining the Environment.

- Key bird habitat sites
- Caribou Habitat sites
- Atlantic Cod Lakes
- Cumulative Impacts
- Transboundary considerations
- Climate change

The importance of these issues and areas to Protecting and Sustaining the Environment was not disputed by participants during the information sharing and gathering sessions.

2.2 Areas identified by participants

Additional areas and issues were identified by participants as important to Protecting and Sustaining the Environment during the information sharing and gathering sessions. These additional areas are;

- Caribou habitat
- Seal breeding grounds
- Polynyas (marine mammals)

2.3 Areas of importance to Protecting and Sustaining the Environment

Areas and issues discussed during the information sharing and gathering sessions as important to Protecting and Sustaining the Environment are illustrated on Map 1, including areas identified in the DNLUP and areas identified by the community. Scanned images of the maps on which community feedback was recorded can be found in Appendix 4.

Based on discussions with participants, the NPC understands that:

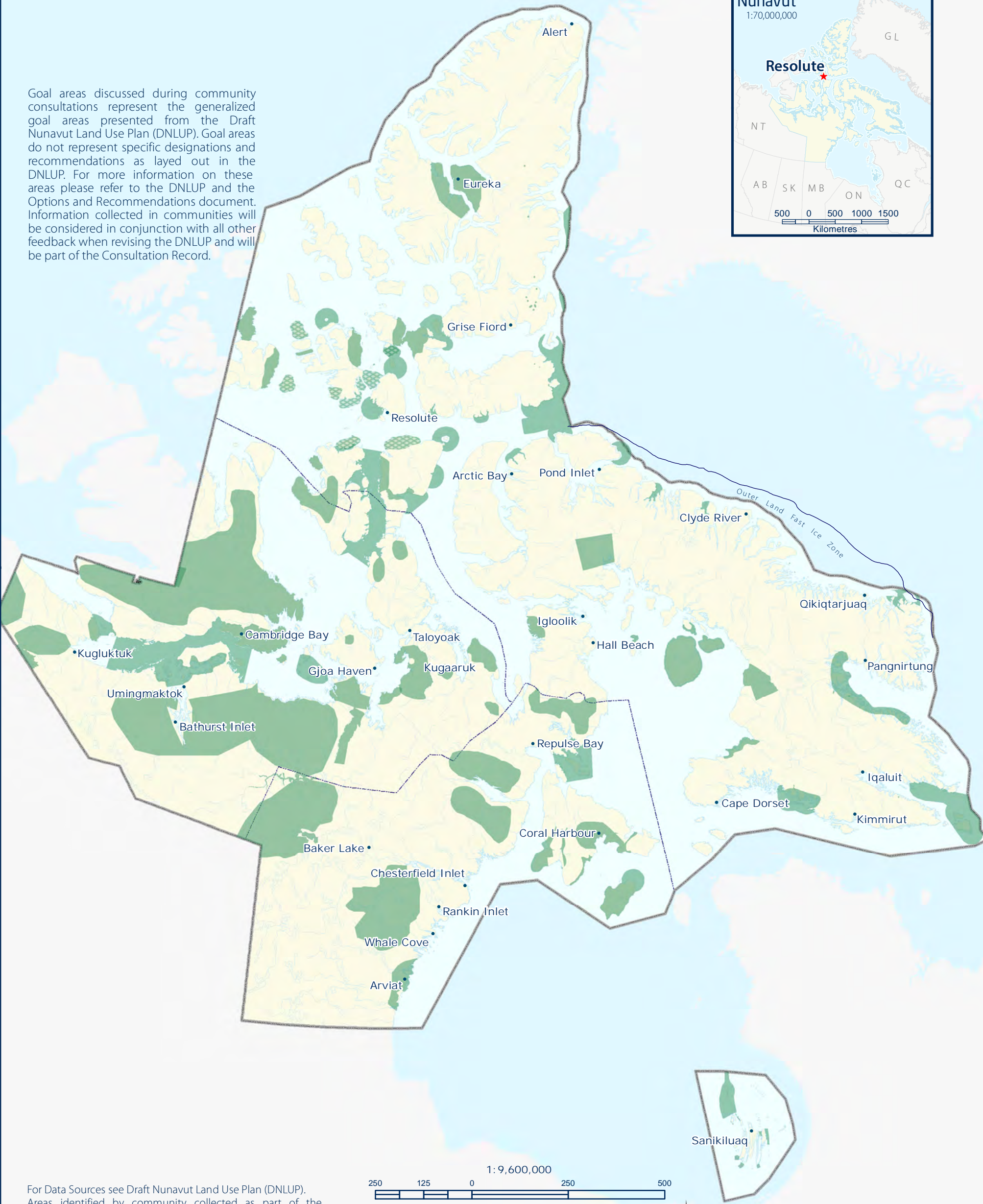
- The areas identified on Map 1 are considered by the Community to be important to Protecting and Sustaining the Environment.
- In these areas, the community would like the NLUP to encourage activities that support environmental protection and management needs, including wildlife conservation, protection and management.

This feedback will be considered in conjunction with all other feedback when revising the DNLUP.

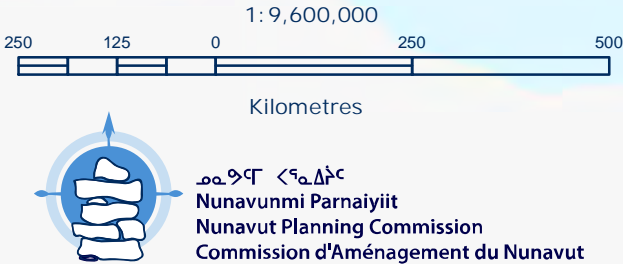


-  PSE Goal areas from the DNLUP discussed during community consultations
-  Additional PSE Goal areas identified during community consultations

Goal areas discussed during community consultations represent the generalized goal areas presented from the Draft Nunavut Land Use Plan (DNLUP). Goal areas do not represent specific designations and recommendations as layed out in the DNLUP. For more information on these areas please refer to the DNLUP and the Options and Recommendations document. Information collected in communities will be considered in conjunction with all other feedback when revising the DNLUP and will be part of the Consultation Record.



For Data Sources see Draft Nunavut Land Use Plan (DNLUP). Areas identified by community collected as part of the Nunavut Planning Commissions Community Engagement Strategy during the Mapping Sessions for the DNLUP on January 28 & 29, 2013. Maps were digitized at the Nunavut Planning Commission. To be used for illustration purposes only as part of the Draft Nunavut Land Use Plan Consultation Process.



Projection: Canada Lambert Conformal Conic, NAD83
Produced by the Nunavut Planning Commission: (867)983-4625, npc@nunavut.ca
June-24-13

Chapter 3: Encouraging Conservation Planning

Encouraging Conservation Planning was one of five topics presented to and discussed by the participants during the information sharing and gathering sessions.

3.1 Areas presented to participants

During the information sharing and gathering sessions, participants were presented the following areas and issues as important to Encouraging Conservation Planning;

- National Parks Awaiting Full Establishment
- Proposed National Parks
- National Marine Conservation Areas
- Thelon Wildlife Sanctuary
- Migratory Bird Sanctuaries
- National Wildlife Areas
- National Historic Sites
- Territorial Historic Sites
- Heritage Rivers

The importance of these issues and areas to Encouraging Conservation Planning was not disputed by participants during the information sharing and gathering sessions.

3.2 Areas identified by participants

Additional areas and issues were identified by participants as important to Encouraging Conservation Planning during the information sharing and gathering sessions. These additional areas are.

- Extension to proposed National Marine Conservation Area
- Bird nesting areas

3.3 Areas of importance to Encouraging Conservation Planning

Areas and issues discussed during the information sharing and gathering sessions as important to Encouraging Conservation Planning are illustrated on Map 2, including areas identified in the DNLUP and areas identified by the community. Scanned images of the maps on which community feedback was recorded can be found in Appendix 4.

Based on discussions with participants, the NPC understands that:

- The areas identified on Map 2 are considered by the Community to be important to Encouraging Conservation Planning.
- In these areas, the community would like the NLUP to encourage activities that support environmental protection and management needs, including wildlife conservation, protection and management.

This feedback will be considered in conjunction with all other feedback when revising the DNLUP.



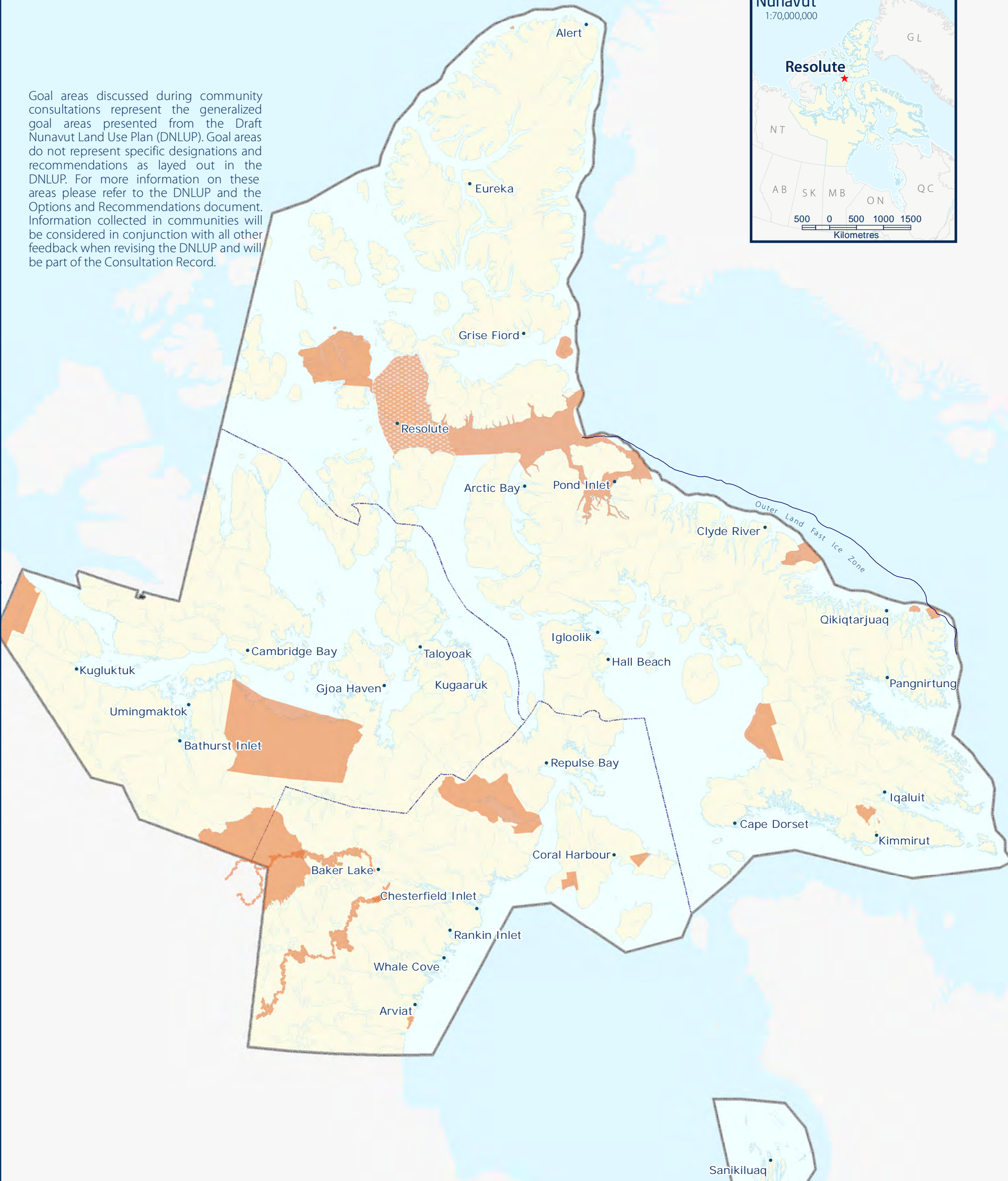


ECP Goal areas from the DNLUP discussed during community consultations



Additional ECP Goal areas identified during community consultations

Goal areas discussed during community consultations represent the generalized goal areas presented from the Draft Nunavut Land Use Plan (DNLUP). Goal areas do not represent specific designations and recommendations as layed out in the DNLUP. For more information on these areas please refer to the DNLUP and the Options and Recommendations document. Information collected in communities will be considered in conjunction with all other feedback when revising the DNLUP and will be part of the Consultation Record.



ᓄᓇᓂᓄᓐ ᐸᓐᓇᐱᓐᓴᓐ
Nunavunmi Parnaiyiit
Nunavut Planning Commission
Commission d'Aménagement du Nunavut



For Data Sources see Draft Nunavut Land Use Plan (DNLUP). Areas identified by community collected as part of the Nunavut Planning Commissions Community Engagement Strategy during the Mapping Sessions for the DNLUP on January 28 & 29, 2013. Maps were digitized at the Nunavut Planning Commission.
To be used for illustration purposes only as part of the Draft Nunavut Land Use Plan Consultation Process.

Projection: Canada Lambert Conformal Conic, NAD83
Produced by the Nunavut Planning Commission: (867)983-4625, npc@nunavut.ca
June-24-13

Chapter 4: Building Healthier Communities

Building Healthier Communities was one of five topics presented to and discussed by the participants during the information sharing and gathering sessions.

4.1 Areas presented to participants

During the information sharing and gathering sessions, participants were presented the following areas and issues as important to Building Healthier Communities;

- Areas of Community Interest
- Community Land Use
- Transportation Infrastructure
- Unincorporated Communities
- Alternative Energy Sources
- Community drinking water supplies
- Land remediation
- Northern Contaminated Sites Program
- Aerodromes
- Canadian Forces Station
- Northern Warning System sites

The importance of these issues and areas to Building Healthier Communities was not disputed by participants.

4.2 Areas identified by participants

Additional areas and issues were identified by participants as important to contributing to the goal of Building Healthier Communities during the information sharing and gathering sessions. These additional areas are;

- Hunting/fishing areas

- Drinking water
- Contaminated Sites

4.3 Areas of importance to Building Healthier Communities



Areas and issues discussed during the information sharing and gathering sessions as important to Building Healthier Communities are illustrated on Map 3, including areas identified in the DNLUP and areas identified by the community. Scanned images of the maps on which community feedback was recorded can be found in Appendix 4.

Based on discussions with participants, the NPC understands that:

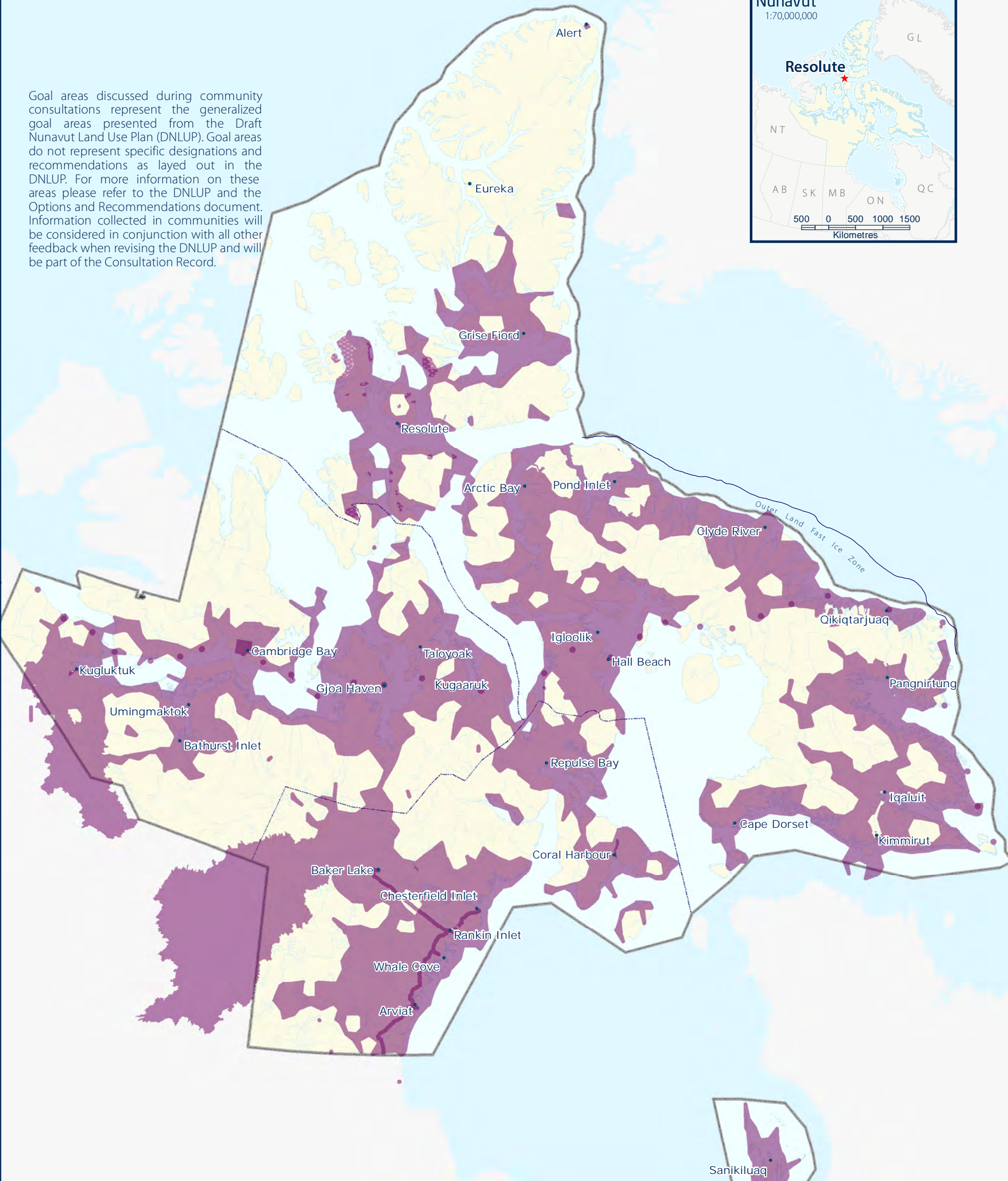
- The areas identified on Map 3 are considered by the Community to be important to Building Healthier Communities.
- In these areas, the community would like the NLUP to encourage activities that support community needs and cultural priorities.

This feedback will be considered in conjunction with all other feedback when revising the DNLUP.

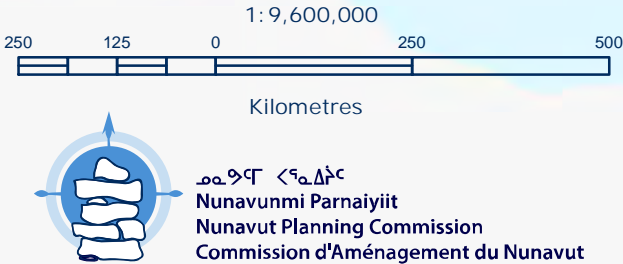


-  BHC Goal areas from the DNLUP discussed during community consultations
-  Additional BHC Goal areas identified during community consultations

Goal areas discussed during community consultations represent the generalized goal areas presented from the Draft Nunavut Land Use Plan (DNLUP). Goal areas do not represent specific designations and recommendations as layed out in the DNLUP. For more information on these areas please refer to the DNLUP and the Options and Recommendations document. Information collected in communities will be considered in conjunction with all other feedback when revising the DNLUP and will be part of the Consultation Record.



For Data Sources see Draft Nunavut Land Use Plan (DNLUP). Areas identified by community collected as part of the Nunavut Planning Commissions Community Engagement Strategy during the Mapping Sessions for the DNLUP on January 28 & 29, 2013. Maps were digitized at the Nunavut Planning Commission. To be used for illustration purposes only as part of the Draft Nunavut Land Use Plan Consultation Process.



Projection: Canada Lambert Conformal Conic, NAD83
Produced by the Nunavut Planning Commission: (867)983-4625, npc@nunavut.ca
June-24-13

Chapter 5: Encouraging Sustainable Economic Development

Encouraging Sustainable Economic Development was one of five topics presented to and discussed by the participants during the information sharing and gathering sessions.

5.1 Areas presented to participants

During the information sharing and gathering sessions, participants were presented with the following areas important to Encouraging Sustainable Economic Development;

- Mineral Exploration and Production
- Oil and Gas Exploration
- Commercial Fisheries

The importance of these issues and areas to Encouraging Sustainable Economic Development was not disputed by participants during the information sharing and gathering sessions.

5.2 Areas identified by participants

Additional areas and issues were identified by participants as important to Encouraging Sustainable Economic Development during the information sharing and gathering sessions. The additional areas identified are;

- Sports hunting

5.3 Areas of importance to Encouraging Sustainable Economic Development

Areas and issues discussed during the information sharing and gathering sessions as important to Encouraging Sustainable Economic Development are illustrated on Map 4, including areas identified in the DNLUP and areas identified by the community. Scanned images of the maps on which community feedback was recorded can be found in Appendix 4.

Based on discussions with participants, the NPC understands that:

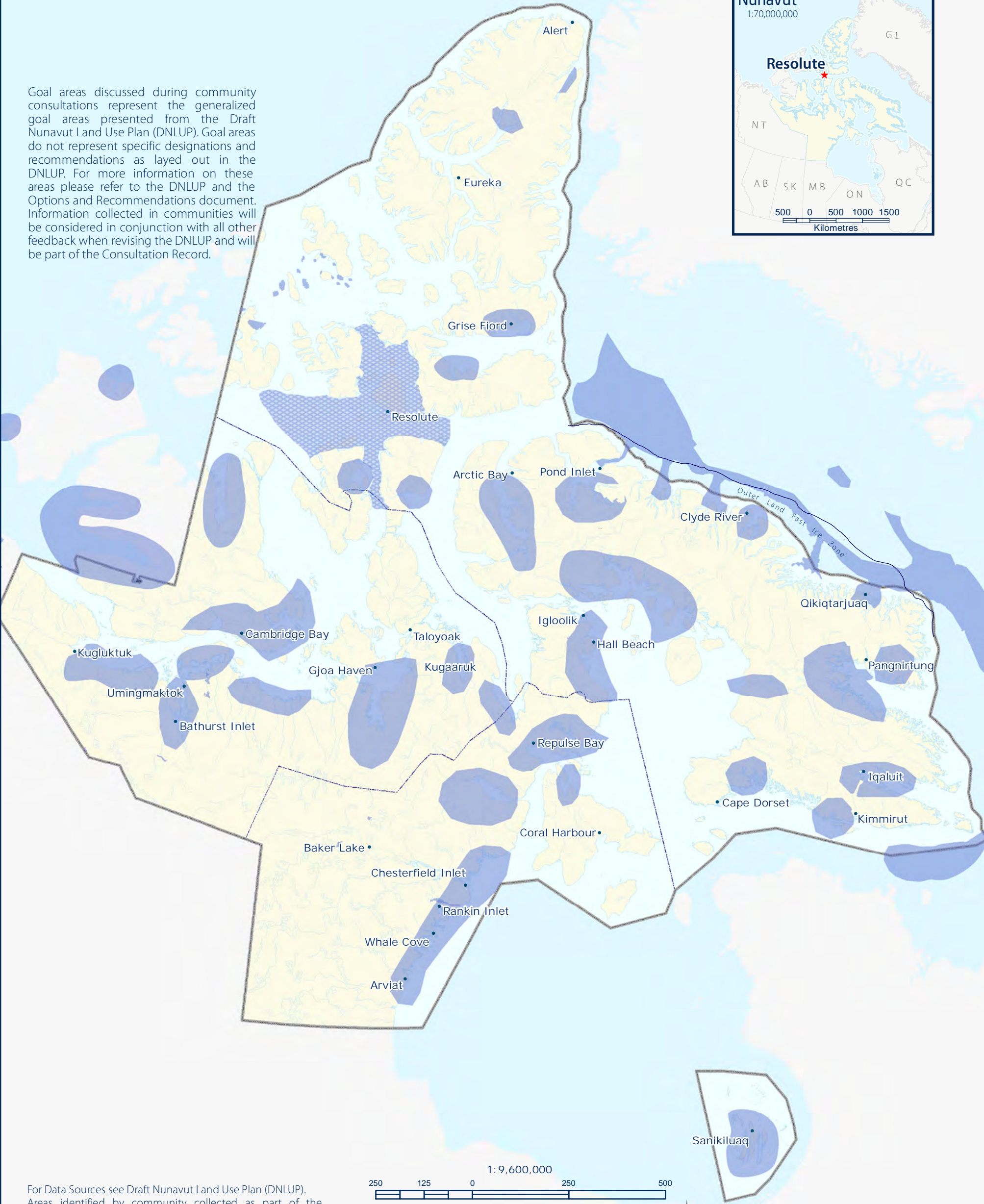
- The areas identified on Map 4 are considered by the Community to be important to Encouraging Sustainable Economic Development.
- In these areas, the community would like the NLUP to encourage activities that support economic opportunities and needs.

This feedback will be considered in conjunction with all other feedback when revising the DNLUP.



- ESED Goal areas from the DNLUP discussed during community consultations
- Additional ESED Goal areas identified during community consultations

Goal areas discussed during community consultations represent the generalized goal areas presented from the Draft Nunavut Land Use Plan (DNLUP). Goal areas do not represent specific designations and recommendations as layed out in the DNLUP. For more information on these areas please refer to the DNLUP and the Options and Recommendations document. Information collected in communities will be considered in conjunction with all other feedback when revising the DNLUP and will be part of the Consultation Record.



For Data Sources see Draft Nunavut Land Use Plan (DNLUP). Areas identified by community collected as part of the Nunavut Planning Commissions Community Engagement Strategy during the Mapping Sessions for the DNLUP on January 28 & 29, 2013. Maps were digitized at the Nunavut Planning Commission. To be used for illustration purposes only as part of the Draft Nunavut Land Use Plan Consultation Process.

250 125 0 250 500
Kilometres

 **ᓄᓇᓂᓄᓐ ᐸᓄᓐᓂᓄᓐ**
Nunavunmi Parnaiyiit
Nunavut Planning Commission
Commission d'Aménagement du Nunavut

Projection: Canada Lambert Conformal Conic, NAD83
Produced by the Nunavut Planning Commission: (867)983-4625, npc@nunavut.ca
June-24-13

6.1 Areas identified in the Draft Plan

The DNLUP identifies areas important for a variety of uses. These areas were presented to participants during the workshop as Mixed Use Areas. These areas, as they occur around the community, are illustrated on Map 5.

6.2 Areas identified by participants

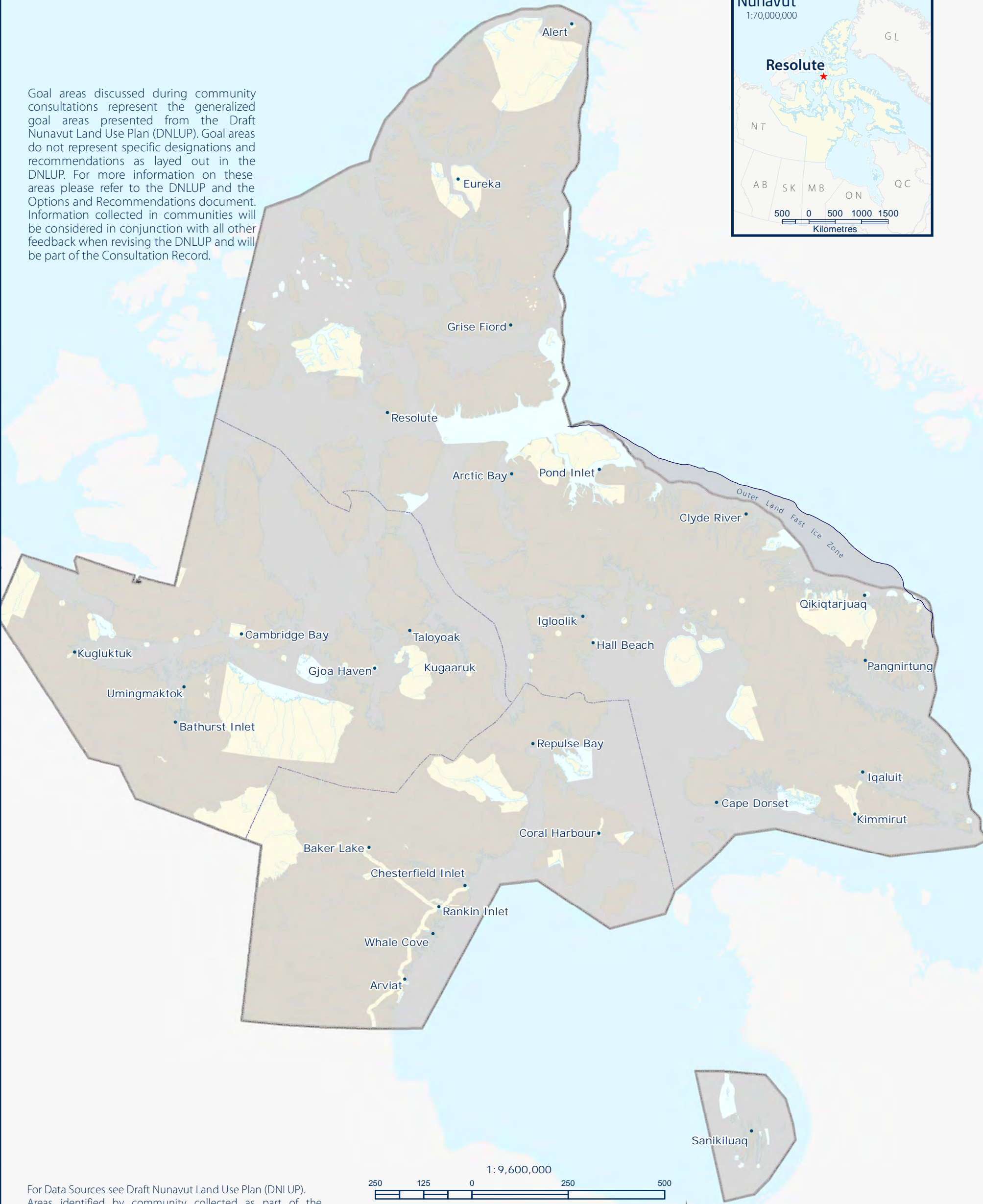
No additional areas were identified as Mixed Use by participants. However, some areas identified as Mixed Use in the DNLUP were considered by participants to require additional protection because of their particular qualities. These areas and the goals they are important for are identified on Map 6.





MU Goal areas from DNLUP discussed during community consultations

Goal areas discussed during community consultations represent the generalized goal areas presented from the Draft Nunavut Land Use Plan (DNLUP). Goal areas do not represent specific designations and recommendations as layed out in the DNLUP. For more information on these areas please refer to the DNLUP and the Options and Recommendations document. Information collected in communities will be considered in conjunction with all other feedback when revising the DNLUP and will be part of the Consultation Record.



For Data Sources see Draft Nunavut Land Use Plan (DNLUP). Areas identified by community collected as part of the Nunavut Planning Commissions Community Engagement Strategy during the Mapping Sessions for the DNLUP on January 28 & 29, 2013. Maps were digitized at the Nunavut Planning Commission. To be used for illustration purposes only as part of the Draft Nunavut Land Use Plan Consultation Process.



ᓄᓇᓂᓄᓐ ᐸᓐᓇᓂᓄᓐ
Nunavunmi Parnaiyiit
Nunavut Planning Commission
Commission d'Aménagement du Nunavut



Projection: Canada Lambert Conformal Conic, NAD83
Produced by the Nunavut Planning Commission: (867)983-4625, npc@nunavut.ca
June-24-13

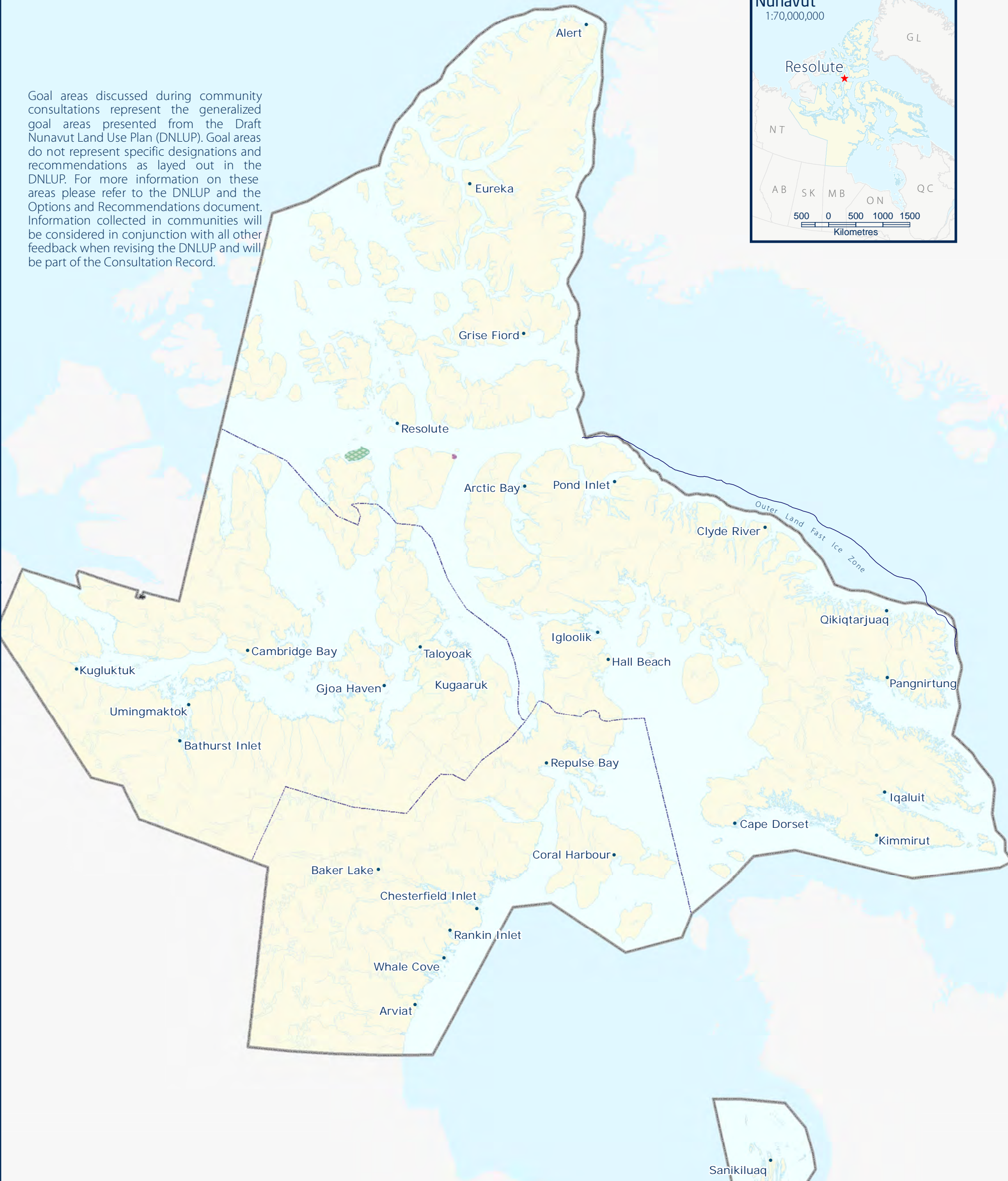


Additional PSE Goal areas identified during community consultations



Additional BHC Goal areas identified during community consultations

Goal areas discussed during community consultations represent the generalized goal areas presented from the Draft Nunavut Land Use Plan (DNLUP). Goal areas do not represent specific designations and recommendations as layed out in the DNLUP. For more information on these areas please refer to the DNLUP and the Options and Recommendations document. Information collected in communities will be considered in conjunction with all other feedback when revising the DNLUP and will be part of the Consultation Record.



For Data Sources see Draft Nunavut Land Use Plan (DNLUP). Areas identified by community collected as part of the Nunavut Planning Commissions Community Engagement Strategy during the Mapping Sessions for the DNLUP on January 28 & 29, 2013. Maps were digitized at the Nunavut Planning Commission. To be used for illustration purposes only as part of the Draft Nunavut Land Use Plan Consultation Process.



ᑎᓄᓐᓂᓐ ᑕᓄᓐᓂᓐ
Nunavunmi Parnaiyiit
Nunavut Planning Commission
Commission d'Aménagement du Nunavut



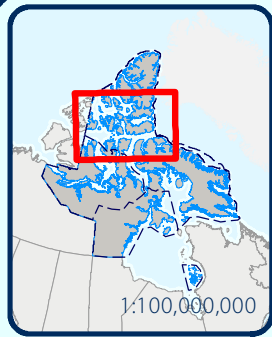
Projection: Canada Lambert Conformal Conic, NAD83
Produced by the Nunavut Planning Commission: (867)983-4625, npc@nunavut.ca April-24-13

7.1 Areas identified for multiple goals

All areas discussed with the community as important for a particular goal are shown on Map 7. In some instances, areas have been identified as important for multiple goals. These areas, and the specific goals they are important to, are also shown on Map 7. In these areas, the NPC will take all of the identified goals and all other feedback into consideration when revising the DNLUP.

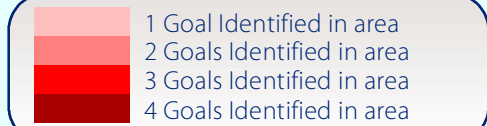


Resolute • Map 7 Overlapping Goal Areas

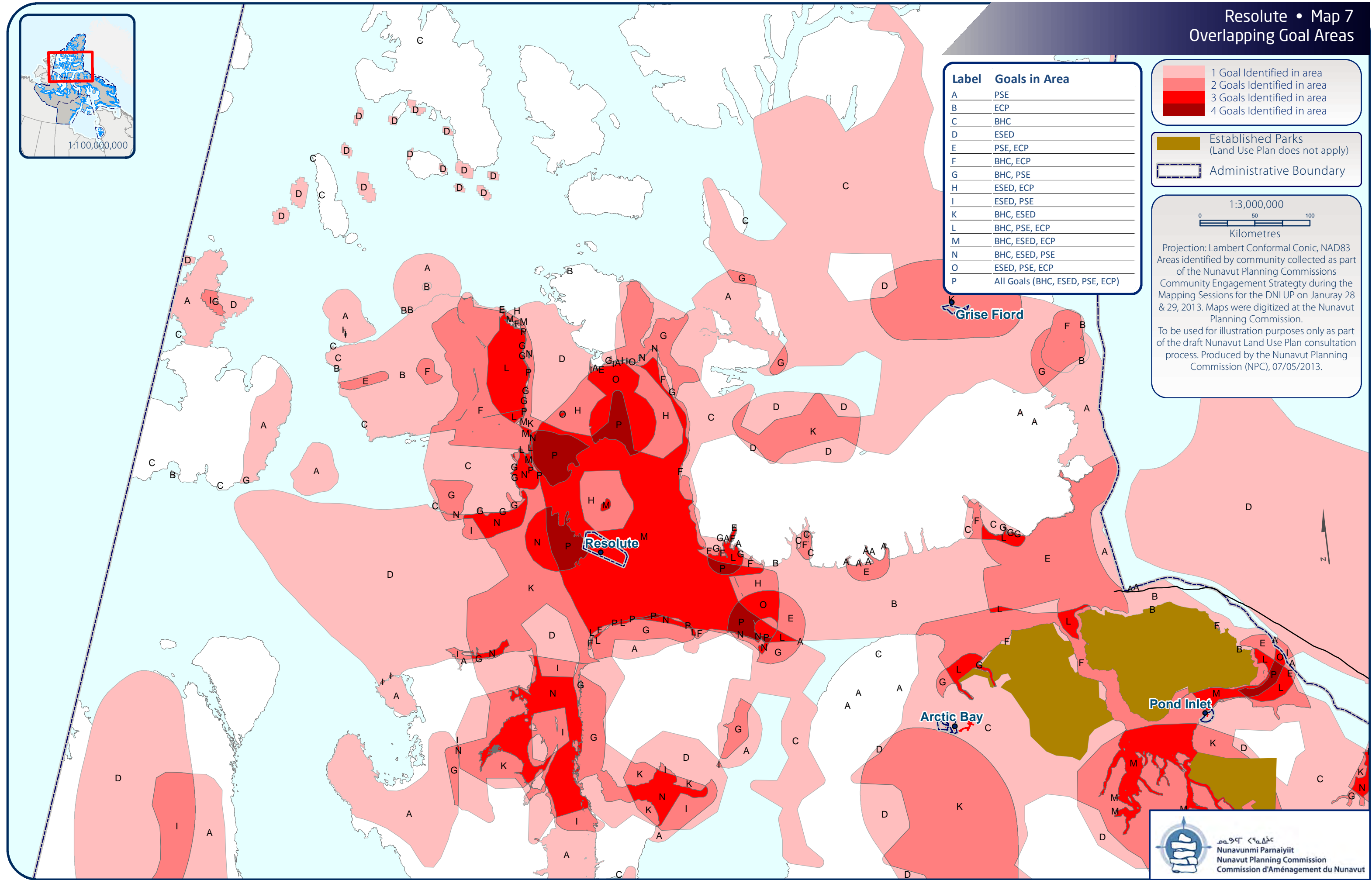


1:100,000,000

Label	Goals in Area
A	PSE
B	ECP
C	BHC
D	ESED
E	PSE, ECP
F	BHC, ECP
G	BHC, PSE
H	ESED, ECP
I	ESED, PSE
K	BHC, ESED
L	BHC, PSE, ECP
M	BHC, ESED, ECP
N	BHC, ESED, PSE
O	ESED, PSE, ECP
P	All Goals (BHC, ESED, PSE, ECP)



Projection: Lambert Conformal Conic, NAD83
Areas identified by community collected as part of the Nunavut Planning Commissions Community Engagement Strategy during the Mapping Sessions for the DNLUP on Januray 28 & 29, 2013. Maps were digitized at the Nunavut Planning Commission.
To be used for illustration purposes only as part of the draft Nunavut Land Use Plan consultation process. Produced by the Nunavut Planning Commission (NPC), 07/05/2013.



Appendix 1: Open House

During the open house, participants raised the following issues:

- Bird area designated to the south (238) is also important for fish and narwhal
- Wants a marine wildlife conservation area South and West of Resolute because beluga molt there and there is also caribou crossing there.
- We support the other communities in what they say for their areas.
- Thule sites close to Resolute (historic sites).
- More research is needed north of Resolute. There are animals here year round.
- The identified caribou sea ice crossing between Somerset Island and Prince of Whales Island (PSE-R3 (57)) is used, and caribou also cross between Prince of Whales Island and Bathurst Island.
- Conserve all of Polar Bear Pass. There's already drilling there and we don't want that. Want it fixed (fence it off or fill it).
- We need to protect East side of Bathurst Island. Save the caribou
- Creswell Bay is very important. There are lots of fish and wildlife there.
- Concerned about year round shipping and impacts on sea ice crossings



Appendix 2: Elected Officials Meeting

The elected officials meeting was attended by the Mayor and members of the Hamlet Council and HTO. During the meeting, participants raised the following issues:

- Who is responsible for cleaning up waste sites?
 - The Commission answered that government is often responsible.
- How much power does the plan have? Will anyone listen?
 - The Commission answered that once it is approved it will be a legally binding document and everyone must follow it.
- Is NTI on board with this? There was a producing well on Cameron Island where there is a Peary caribou herd. We want it protected. NTI says no, you can't do that.
 - The Commission answered that NTI supports the work of the Commission.
- Leona Aglukkaq has said the government has an economic development agenda. "Use it or lose it". How much power do you really have? Are there conflicts between the pro development stance and what the people want?
 - The Commission answered that the plan is important to guide and direct resource use and development. Yes, there is a strong interest in economic development, but industry also wants to know where not to go.

Appendix 3: Questions and Answers

During the community workshop, there was a question and answer period, which included a discussion of the following topics:

- Have government departments identified areas they don't want NPC to touch? If so, can Resolute have a say in this?
 - The Commission answered that Government has identified important areas (not areas they don't want NPC to touch). Also, for example DND wants to know where residents are concerned about activities. Once we know, we will bring these concerns forward.
- Last (military?) exercise included 75 snow machines, twin otters, and helicopters. We asked them to tell us where and when but they just went everywhere they wanted. We want to have a say in where these activities take place. NPC should take community views into account.
 - The Commission answered that a priority for today is to listen to what people have to say and list all the main community concerns.
- Parks are being developed like Lancaster Sound and Bird Sanctuaries. Will they be in the land use plan?
 - The Commission answered that they are included in the plan as conservation areas.
- On Somerset Island (Cunningham Inlet?) there is a private business to observe belugas with tourists. They made an airstrip without notifying anyone. We had no say. What kind of power do Inuit have if they say no and they just go ahead and use it?
 - The Commission answered that this is not supposed to happen on IOL without consulting the QIA and CLARC.
- Is there any timeline you're looking at? We know about a coal mine going in on Ellesmere Island. Are these going to be grandfathered? Is the LUP retroactive so mining won't rush in?
 - The Commission answered that projects that already exist will be grandfathered. Any projects that are looking to change will have to go through the regulatory process but if it's before the land use plan is approved, it will be grandfathered.



Appendix 4: Community Workshop Scanned Maps

One group completed the mapping session to identify important areas. This Appendix contains the maps that were used by participants to identify areas that are important to the following land use planning goals:

- Protecting and Sustaining the Environment
- Encouraging Conservation Planning
- Building Healthier Communities
- Encouraging Sustainable Economic Development
- Mixed Use

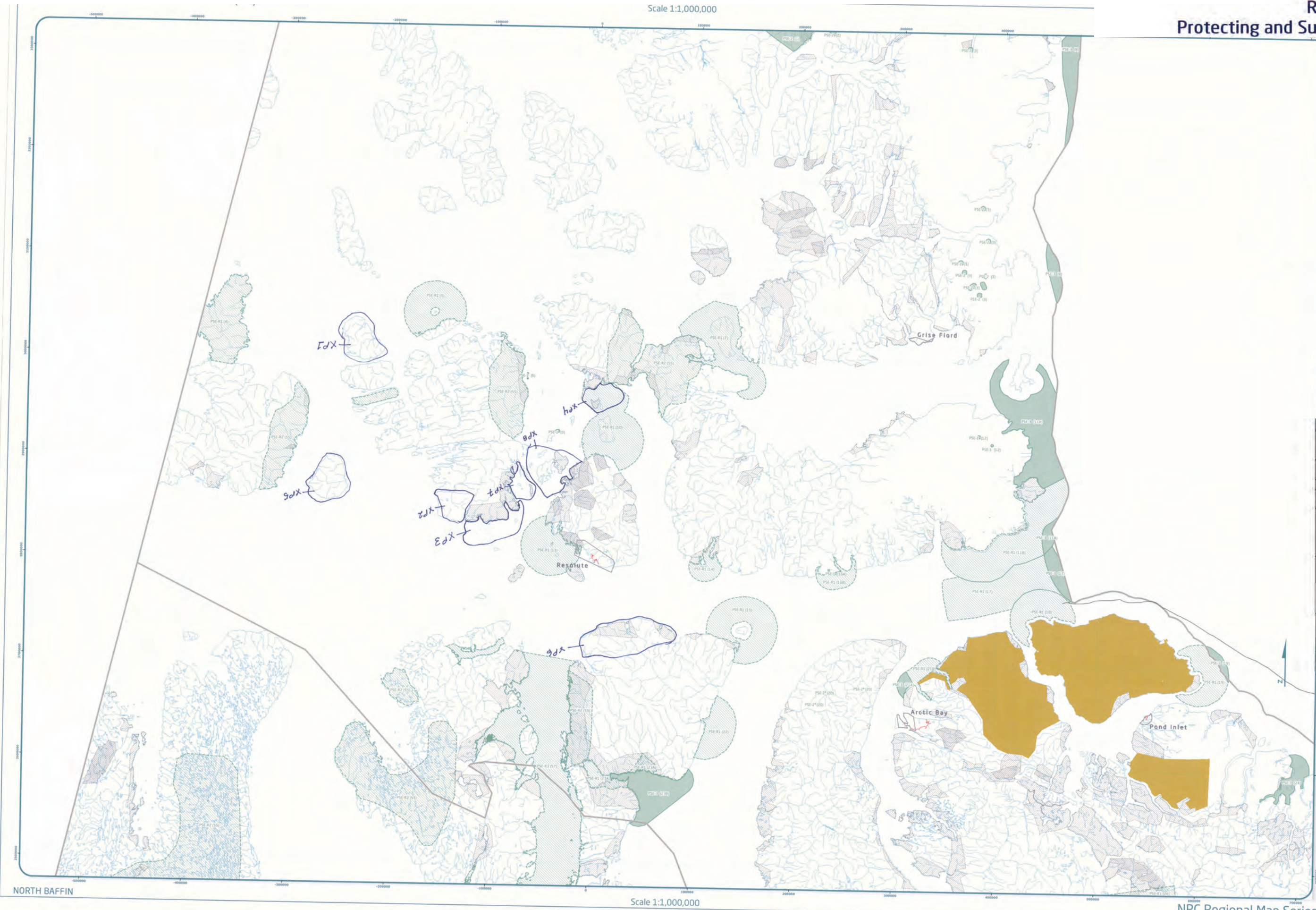
Also included on each map is a reference table that includes the specific values that were identified for the area.

During the mapping portion of the community workshop, the following concerns were raised that did not apply to a specific area that was identified on the maps:

- The mining companies have lot of claims and the public should have been informed so Inuit don't have false sense of ownership of the land.
- Questions about grandfathering and existing claims. Discussion that areas can still be identified as important to the community even though there may already be claims there.
- Concerned about a private airstrip constructed without permission near Cunningham Inlet for tourists to watch whales.
- Concerned that cruise ships will now start to visit areas the community identifies as important.
- Polar bears are mobile and I want to make it clear most of the sea ice and water should be protected. The whole water is use by all mammals, so how do we handle and try to curb this if the shipping traffic is increased, as we know it will.

- The key bird habitat identified in Draft Plan to the north of Cornwallis Island (PSE-R1(10)) is also an important area for walrus (polynya).
- The mammals have widened their migration routes since the oceans have started to melt earlier every year; this even includes bowhead whales. They are even going far as Taloyoak and Cambridge Bay from the Atlantic Ocean side.
- The community land use information that has been collected shows the hunting areas of the community.
- Migration routes need to be protected where narwhales are coming in from the Arctic Ocean, not from Baffin Bay as has been told for many years by government researchers.
- Can we ask for environmental assessment for the lakes around here, including the sounding land mass on our island and the community of Resolute Bay?
- All the islands have muskox sport hunting
- For economic development, musk-ox and seal hides should be included.

Resolute - Group 1 Results
Protecting and Sustaining the Environment



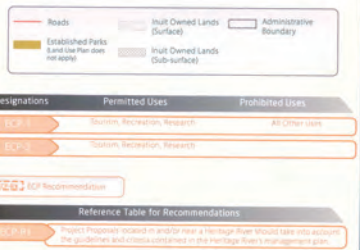
Designations	Permitted Uses	Prohibited Uses
PSE-1	Tourism, Recreation, Research	All Other Uses
PSE-2	Tourism, Recreation, Research	All Other Uses
PSE-3	Tourism, Recreation, Research, Marine Infrastructure, Marine Communications and Electrical Cables	All Other Uses

PSE Recommendation	
Reference Table for Recommendations	
PSE-01	Project Provisions located in a Key Bird Habitat Site should take into account impacts on the migratory birds that stop on the site.
PSE-02	Project Provisions located in historic caribou calving grounds should take into account impacts on caribou calving, deer calving areas and migration routes.
PSE-03	Project Provisions located in areas with known caribou, sea ice crossing areas should take into account impacts that may impact the ability of caribou to cross the ice.
PSE-04	Project Provisions located in portions of the Great Bear Lake watershed in Nunavut should take into account transboundary impacts that may reduce the conservation value of the watershed.

Code	Comments
XP1	Important wintering area for caribou. Would like to see this island (Cameron Island - Benthorn Creek) protected.
XP2	During winter caribou are here as well, this corner
XP3	Bearded and Ring Seal breeding ground
XP4	Open polynya where walrus stay there all year. Also seals of all kinds.
XP5	This little island has caribou as well. In winter they do not seem to lose their fat. I would like to have protected. Martin Island. The sea crossing between the islands should also be protected.
XP6	this area used to have no caribou, they left this area long ago and are starting to make a comeback to this land, and it should now be protected. The caribou area between the island is enlarging and requires protection of both islands.
XP7	this area is the habitat of walrus and should be protected because this sea ice area is a polynya and many sea mammals winter here.
XP8	Caribou crossing area

1	20
2	21
3	22
4	23
5	24
6	25
7	26
8	27
9	28
10	29
11	30
12	31
13	32
14	33
15	34
16	35
17	36
18	37
19	38
20	39
21	40
22	41
23	42
24	43
25	44
26	45
27	46
28	47
29	48
30	49
31	50
32	51
33	52
34	53
35	54
36	55
37	56
38	57
39	58
40	59
41	60
42	61
43	62
44	63
45	64
46	65
47	66
48	67
49	68
50	69
51	70
52	71
53	72
54	73
55	74
56	75
57	76
58	77
59	78
60	79
61	80
62	81
63	82
64	83
65	84
66	85
67	86
68	87
69	88
70	89
71	90
72	91
73	92
74	93
75	94
76	95
77	96
78	97
79	98
80	99
81	100
82	101
83	102
84	103
85	104
86	105
87	106
88	107
89	108
90	109
91	110
92	111
93	112
94	113
95	114
96	115
97	116
98	117
99	118
100	119
101	120
102	121
103	122
104	123
105	124
106	125
107	126
108	127
109	128
110	129
111	130
112	131
113	132
114	133
115	134
116	135
117	136
118	137
119	138
120	139
121	140
122	141
123	142
124	143
125	144
126	145
127	146
128	147
129	148
130	149
131	150
132	151
133	152
134	153
135	154
136	155
137	156
138	157
139	158
140	159
141	160
142	161
143	162
144	163
145	164
146	165
147	166
148	167
149	168
150	169
151	170
152	171
153	172
154	173
155	174
156	175
157	176
158	177
159	178
160	179
161	180
162	181
163	182
164	183
165	184
166	185
167	186
168	187
169	188
170	189
171	190
172	191
173	192
174	193
175	194
176	195
177	196
178	197
179	198
180	199
181	200
182	201
183	202
184	203
185	204
186	205
187	206
188	207
189	208
190	209
191	210
192	211
193	212
194	213
195	214
196	215
197	216
198	217
199	218
200	219
201	220
202	221
203	222
204	223
205	224
206	225
207	226
208	227
209	228
210	229
211	230
212	231
213	232
214	233
215	234
216	235
217	236
218	237
219	238
220	239
221	240
222	241
223	242
224	243
225	244
226	245
227	246
228	247
229	248
230	249
231	250
232	251
233	252
234	253
235	254
236	255
237	256
238	257
239	258
240	259
241	260
242	261
243	262
244	263
245	264
246	265
247	266
248	267
249	268
250	269
251	270
252	271
253	272
254	273
255	274
256	275
257	276
258	277
259	278
260	279
261	280
262	281
263	282
264	283
265	284
266	285
267	286
268	287
269	288
270	289
271	290
272	291
273	292
274	293
275	294
276	295
277	296
278	297
279	298
280	299
281	300
282	301
283	302
284	303
285	304
286	305
287	306
288	307
289	308
290	309
291	310
292	311
293	312
294	313
295	314
296	315
297	316
298	317
299	318
300	319
301	320
302	321
303	322
304	323
305	324
306	325
307	326
308	327
309	328
310	329
311	330
312	331
313	332
314	333
315	334
316	335
317	336
318	337
319	338
320	339
321	340
322	341
323	342
324	343
325	344
326	345
327	346
328	347
329	348
330	349
331	350
332	351
333	352
334	353
335	354
336	355
337	356
338	357
339	358
340	359
341	360
342	361
343	362
344	363
345	364
346	365
347	366
348	367
349	368
350	369
351	370
352	371
353	372
354	373
355	374
356	375
357	376
358	377
359	378
360	379
361	380
362	381
363	382
364	383
365	384
366	385
367	386
368	387
369	388
370	389
371	390
372	391
373	392
374	393
375	394
376	395
377	396
378	397
379	398
380	399
381	400
382	401
383	402
384	403
385	404
386	405
387	406
388	407
389	408
390	409
391	410
392	411
393	412
394	413
395	414
396	415
397	416
398	417
399	418
400	419
401	420
402	421
403	422
404	423
405	424
406	425
407	426
408	427
409	428
410	429
411	430
412	431
413	432
414	433
415	434
416	435
417	436
418	437
419	438
420	439
421	440
422	441
423	442
424	443
425	444
426	445
427	446
428	447
429	448
430	449
431	450
432	451
433	452
434	453
435	454
436	455
437	456
438	457
439	458
440	459
441	460
442	461
443	462
444	463
445	464
446	465
447	466
448	467
449	468
450	469
451	470
452	471
453	472
454	473
455	474
456	475
457	476
458	477
459	478
460	479
461	480
462	481
463	482
464	483
465	484
466	485
467	486
468	487
469	488
470	489
471	490
472	491
473	492
474	493
475	494
476	495
477	496
478	497
479	498
480	499
481	500
482	501
483	502
484	503
485	504
486	505
487	506
488	507
489	508
490	509
491	510
492	511
493	512
494	513
495	514
496	515
497	516
498	517
499	518
500	519
501	520
502	521
503	522
504	523
505	524
506	525
507	526
508	527
509	528
510	529
511	530
512	531
513	532
514	533
515	534
516	535
517	536
518	537
519	538
520	539
521	540
522	541
523	542
524	543
525	544
526	545
527	546
528	547
529	548
530	549
531	550
532	551
533	552
534	553
535	554
536	555
537	556
538	557
539	558
540	559
541	560
542	561
543	562
544	563
545	564
546	565
547	566
548	567
549	568
550	569
551	570
552	571
553	572
554	573
555	574
556	575
557	576
558	577
559	578
560	579
561	580
562	581
563	582
564	583
565	584
566	585
567	586
568	587
569	588
570	589
571	590
572	591
573	592
574	593
575	594
576	595
577	596

The map shows the province of Nunavut with its major cities and towns marked. A red box highlights the central region of the territory. The map includes a scale bar (0 to 750 Kilometers) and a north arrow.



Code	Comments
XC9	Area important around Resolute. Want it added to NMCA
XC10	Nesting ground for Guillemots and Murres
XC11	Nesting ground for Guillemots and Murres
XC12	Nesting ground for Guillemots and Murres
XC13	Nesting ground for Guillemots and Murres, sea gulls, etc.
XC14	Nesting area for Eider Ducks
XC15	Nesting area for Eider Ducks

Community: Kassler Lake
 Location: _____
 Region: _____
 Date: Jan. 13
 Community #/NA: _____
 Map # _____

May 2005

Signatures of the Community Locally in permission
 form to conduct mapping session as informants.

1.	16
2.	17
3.	18
4.	19
5.	20
6.	21
7.	22
8.	23
9.	24
10.	25
11.	26
12.	27
13.	28
14.	29
15.	30

Mike Truett - Tommy Outright
 Signature of Mapper




 National Planning Commission
 Commission d'aménagement du territoire

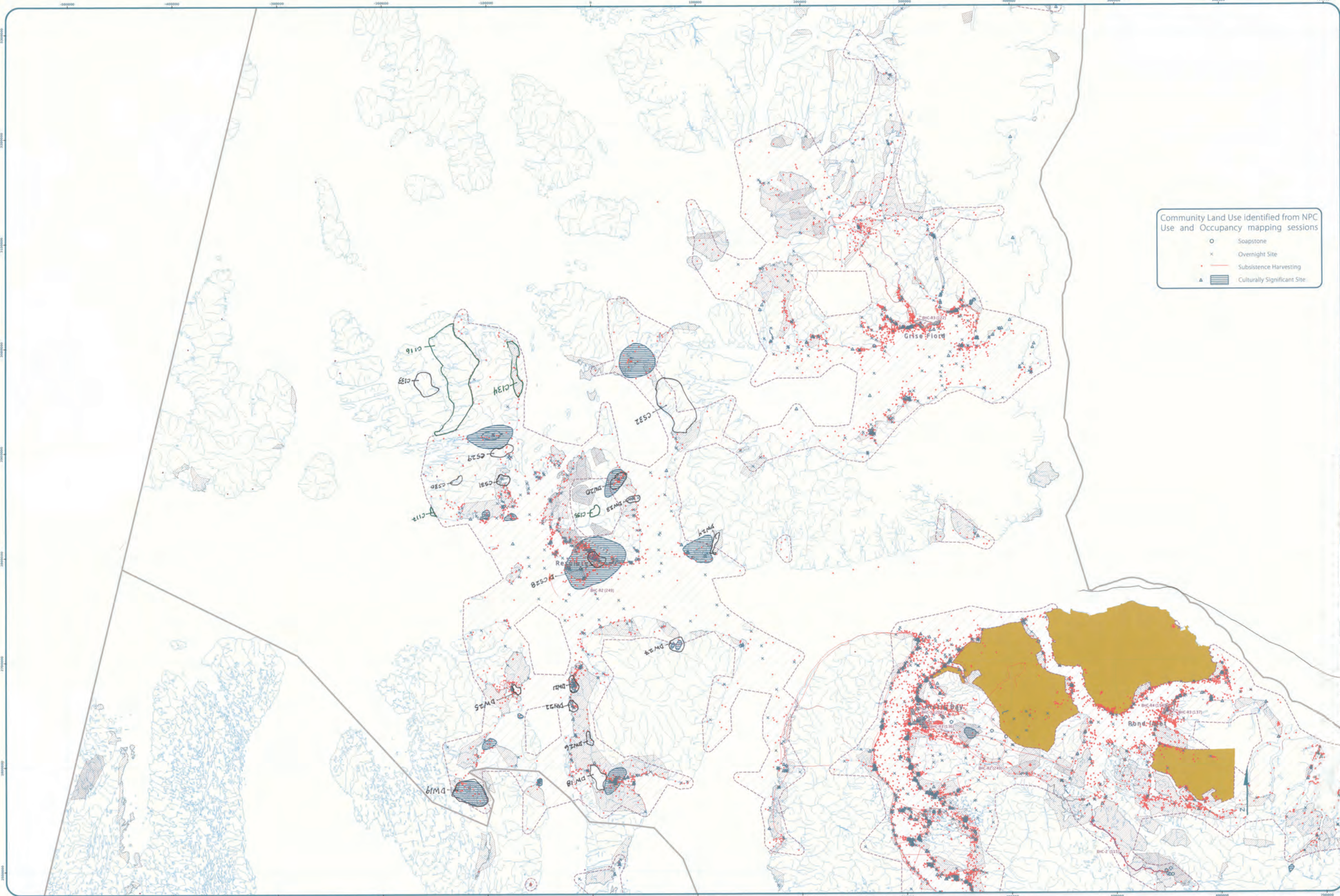
Coordinate System: EPSG 42304 LCC
 Projection: Lambert Conformal Conic
 Datum: North American 1983
 False Easting: 0.0000
 False Northing: 0.0000
 Central Meridian: -95.0000
 Standard Parallel 1: 49.0000
 Standard Parallel 2: 77.0000
 Latitude Of Origin: 49.0000
 Units: Meter

[illegible]

Resolute - Group 1 Results
Building Healthier Communities

BUILDING HEALTHIER COMMUNITIES (BHC)

Scale 1:1,000,000



Designations	Permitted Uses	Prohibited Uses
BHC-1	Roads, Railways, Utilities and Corridors	
BHC-2	Roads, Railways, Utilities and Corridors	
BHC-3	All uses except those Prohibited	Mining
BHC-4	Hydro electrical and related infrastructure	
BHC-5	Tourism, Recreation and Research, Municipal Services	
BHC-6	Municipal Services	All other uses
BHC-7	Municipal Services	
BHC-8	Remediation and Reclamation Activities	All other uses
BHC-9	Remediation and Reclamation Activities, DND Operations and Activities	All other uses
BHC-10	DND Operations and Activities	All other uses

Code	Comments
C116	Additional hunting areas
C117	Hunting here every spring. In summer the shore around the island are full of mammals, such as beluga whales, ringed seals, narwhals and other mammals.
DW18	Drinking water source. Stanwell Fletcher Lake
DW19	Drinking water source. Crooked Lake
DW20	Drinking water source. Eleanor Lake
DW21	Drinking water source. Small Lake
DW22	Drinking water source. Small Lake
DW23	Drinking water source. Laura Lake
DW24	Arctic Char - protect from shipping
DW25	Arctic Char - protect from shipping
DW26	Theona Lake. There are fish here. Needs protection.
DW27	Two lakes in area have fish.
CS28	Cleaning up needed for the airport area and some old military base and where they used to work.
CS29	Hundreds of barrels, 4 or 5 buildings, landing craft
CS30	Misty Fiver area, lots of barrels, large camp
CS31	World War 2 landing craft - open in front - 2 on shore - barrels eroding
CS32	Barrels and houses for oil exploration
C133	INAC identified 6 contaminated sites. 3 areas are class A status, elevated. So contaminated they want fence around it. New. Lots of oil exploration all over Bathurst Island
C134	Contaminated sites on IOL
C135	Old drilling area full of mud mixed with chemicals when flushed up

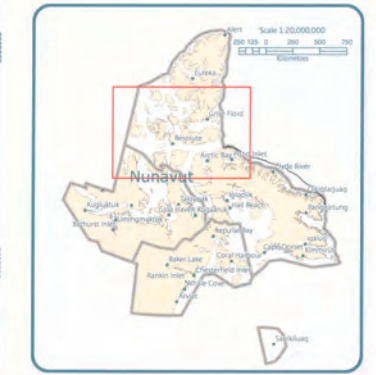
Code	Comments
C116	Additional hunting areas
C117	Hunting here every spring. In summer the shore around the island are full of mammals, such as beluga whales, ringed seals, narwhals and other mammals.
DW18	Drinking water source. Stanwell Fletcher Lake
DW19	Drinking water source. Crooked Lake
DW20	Drinking water source. Eleanor Lake
DW21	Drinking water source. Small Lake
DW22	Drinking water source. Small Lake
DW23	Drinking water source. Laura Lake
DW24	Arctic Char - protect from shipping
DW25	Arctic Char - protect from shipping
DW26	Theona Lake. There are fish here. Needs protection.
DW27	Two lakes in area have fish.
CS28	Cleaning up needed for the airport area and some old military base and where they used to work.
CS29	Hundreds of barrels, 4 or 5 buildings, landing craft
CS30	Misty Fiver area, lots of barrels, large camp
CS31	World War 2 landing craft - open in front - 2 on shore - barrels eroding
CS32	Barrels and houses for oil exploration
C133	INAC identified 6 contaminated sites. 3 areas are class A status, elevated. So contaminated they want fence around it. New. Lots of oil exploration all over Bathurst Island
C134	Contaminated sites on IOL
C135	Old drilling area full of mud mixed with chemicals when flushed up

Working Draft Sub-regional map data sources:
For Land Use Designations and Recommendations sources see draft Nunavut Land Use Plan and background material data source documents.
Use and Occupancy data from NPC Use and Occupancy mapping sessions, 2004 to 2011.
Hillshade created by utilizing SRTM3 data in Hillshade toolset courtesy of ESR User Forums Water bodies created by merging all 2:250,000 scale maps in Nunavut, version 2.0, and selecting all waterbodies over 50 hectares in size. Land outside of Nunavut, courtesy of Geomatics. Administrative boundaries consist of NPC draft regional boundaries, created to reflect regional land administration jurisdictions, combined with municipal boundaries, provided by Natural Resources Canada cadastre data. Inuit Owned Lands courtesy of Nunavut Government. Territorial parks from the Government of Nunavut. National Parks from Parks Canada. Data for areas within municipal boundaries obtained from Natural Resources Canada cadastre data.
This map is to be used for reference purposes only by the NPC.
Data for areas within municipal boundaries obtained from the Nunavut Planning Commission at (867) 893-4625 or email nrc@nrc.nu.ca
Any further use of this map or data therein must be authorized by the Nunavut Planning Commission at (867) 893-4625 or email nrc@nrc.nu.ca
January 2012

NORTH BAFFIN

Scale 1:1,000,000

NPC Regional Map Series



Legend:

- Roads
- Established Parks and/or Ball Fields not used
- Inuit Owned Lands (Surface)
- Inuit Owned Lands (Sub-surface)
- Administrative Boundary

Designations	Permitted Uses	Prohibited Uses
Category 1	Mining, Remediation and Reclamation or Activities, Roads, Repetitive Utilities and Corridors	
Category 2	Oil and gas, Remediation and Reclamation Activities	

Table 1: EIS/2 Recommendation

Category	Recommendation
Category 1	Category 1 is the most appropriate for the proposed project. The project is a large-scale industrial project that may require the potential of the site.

Code	Comments
XD36	Important commercial Polar Bear hunting - sport hunting. Includes Seals, Polar Bear, Arctic Char, Cod, Narwhal, Beluga
XD37	Polar Bear hunting - local hunters
XD38	Subsistence hunting and sports hunting
XD39	Subsistence hunting and sports hunting
XD40	Polar Bear harvesting and denning
XD41	Polar Bear denning

<p>Community: <u>Kesilake</u></p> <p>Location: _____</p> <p>Region: _____</p> <p>Date: <u>June 28</u></p> <p>Community Print: _____</p> <p>Map # _____</p>	<p style="text-align: center;"> <u>Minutes of Planning Commission</u> <u>(Community Association Map)</u> <u>(with the Mapping Service)</u> </p> <p style="text-align: right; font-size: 1.5em;">Map 485</p>																														
<p>Signatures of the Community signify as permission to enter a mapping system as follows:</p> <table border="0" style="width: 100%;"> <tr><td>1. _____</td><td>16. _____</td></tr> <tr><td>2. _____</td><td>17. _____</td></tr> <tr><td>3. _____</td><td>18. _____</td></tr> <tr><td>4. _____</td><td>19. _____</td></tr> <tr><td>5. _____</td><td>20. _____</td></tr> <tr><td>6. _____</td><td>21. _____</td></tr> <tr><td>7. _____</td><td>22. _____</td></tr> <tr><td>8. _____</td><td>23. _____</td></tr> <tr><td>9. _____</td><td>24. _____</td></tr> <tr><td>10. _____</td><td>25. _____</td></tr> <tr><td>11. _____</td><td>26. _____</td></tr> <tr><td>12. _____</td><td>27. _____</td></tr> <tr><td>13. _____</td><td>28. _____</td></tr> <tr><td>14. _____</td><td>29. _____</td></tr> <tr><td>15. _____</td><td>30. _____</td></tr> </table>		1. _____	16. _____	2. _____	17. _____	3. _____	18. _____	4. _____	19. _____	5. _____	20. _____	6. _____	21. _____	7. _____	22. _____	8. _____	23. _____	9. _____	24. _____	10. _____	25. _____	11. _____	26. _____	12. _____	27. _____	13. _____	28. _____	14. _____	29. _____	15. _____	30. _____
1. _____	16. _____																														
2. _____	17. _____																														
3. _____	18. _____																														
4. _____	19. _____																														
5. _____	20. _____																														
6. _____	21. _____																														
7. _____	22. _____																														
8. _____	23. _____																														
9. _____	24. _____																														
10. _____	25. _____																														
11. _____	26. _____																														
12. _____	27. _____																														
13. _____	28. _____																														
14. _____	29. _____																														
15. _____	30. _____																														
<p>Signature of Mapper:</p> <p style="text-align: center; font-size: 1.2em;"> <u>Mike Townsend - Tommy Oulifoot</u> </p> <p style="text-align: center; font-size: 0.8em;">COMMUNITY MAP</p>																															

[illegible]



Designations	Permitted Uses	Prohibited Uses
--------------	----------------	-----------------

Code	Comments
MU42	Russell Island has lots of Caribou and muskox and should be protected.
MU43	Old Hudsons Bay Site, where one participant's mother was born. Should be protected

This image shows a single sheet of white paper with horizontal blue lines, typical of notebook paper. The lines are evenly spaced and run across the width of the page. There is no handwriting or other markings on the paper.

National Planning Commission
 Community Consultation Form
 Level one Mapping Activity

Community: Leicester
 Location: _____
 Region: _____
 Date: _____
 Community Size: _____
 Map # _____

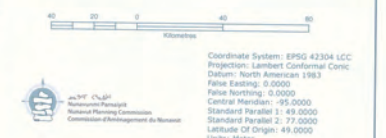
Signatures of the Community signify its permission
 to conduct mapping and/or informants.

1.	<u>John Carpenter</u>	16.	
2.	<u>John Carpenter</u>	17.	
3.	<u>John Carpenter</u>	18.	
4.	<u>John Carpenter</u>	19.	
5.	<u>John Carpenter</u>	20.	
6.	<u>John Carpenter</u>	21.	
7.	<u>John Carpenter</u>	22.	
8.	<u>John Carpenter</u>	23.	
9.	<u>John Carpenter</u>	24.	
10.	<u>John Carpenter</u>	25.	
11.	<u>John Carpenter</u>	26.	
12.	<u>John Carpenter</u>	27.	
13.	<u>John Carpenter</u>	28.	
14.	<u>John Carpenter</u>	29.	
15.	<u>John Carpenter</u>	30.	

Mike Turner - Turney subject

Signature of Mapper: _____

CONFIDENTIALITY STATEMENT



Working Draft Sub-regional map data sources
For Land Use Designations and Recommendations sources see draft Nunavut Land Use Plans and background information data source documents.
Habitat created by utilizing Swiss method in Hillsdale topographic maps, and other data sources documented by merging all 1,250,000 m² chaparral in Nunavut, version 2.0, and selecting all watersheds over 50 km² in size. Land outside of Nunavut, including Nunavut's administrative boundaries, is not included in the draft boundaries, created to reflect Regional and Arctic Administration boundaries of Nunavut and Nunavut's administrative boundaries. Nunavut's administrative boundaries are not included in the draft boundaries, provided by Natural Resources Canada (national data). Most owned lands (country of Nunavut, Territories, and Nunavut's administrative boundaries) are not included in the draft boundaries. The draft boundaries for areas within municipal boundaries obtained from natural resources purposes only by the NRC.
This map is to be used for reference purposes only by the NRC.
Any further use of this map or data requires contacting the Nunavut Planning Commission at: (867) 963-4625 or email: nunavutplanning@nrc.ca
Tuesday, January 22, 2013

During the Wrap Up Session, participants raised the following issues:

- It is important to maintain culture, and healthy food from the land is very important.
- Impacts from activities are widespread. Some values extend beyond geographic areas. Oil and gas activities decreased caribou populations for 25 years. Oil and gas to the northwest will impact Resolute and surrounding area a lot.

Appendix 6: Follow-up Meeting

The NPC returned to the community to review a draft version of this report with the Hamlet Council, Hunters and Trappers Organization, and Community Lands and Resource Committee. The meeting included:

- A presentation of a draft version of this report
- An overview of the mapped information that was recorded for each topic:
 - Protecting and Sustaining the Environment
 - Encouraging Conservation Planning
 - Building Healthier Communities
 - Encouraging Sustainable Economic Development
 - Mixed Use
- Potential changes to the classification of a few mapped areas were discussed and agreed to.
- General discussion and comments including:
 - Opportunities to provide additional comments
 - There needs to be Inuktitut names for Polar Bear Pass, Bathurst Island and other “prominent sites”
 - Timelines for completion
 - Concerned about the mess on the land that needs to be cleaned up.
 - Concerned about sonar disturbing wildlife. Also ship propellers.