

Summary of Community Meetings on the
Draft Nunavut Land Use Plan

RESOLUTE

January 28-29, 2013



Nunavut Planning
Commission



Revised - September 2013

Contents

Introduction.....	3	Appendix 1: Open House	17
1.1 Context	3	Appendix 2: Elected Officials Meeting	18
1.2 Purpose.....	3	Appendix 3: Questions and Answers	19
1.3 Methodology.....	3	Appendix 4: Community Workshop Scanned Maps	20
1.4 Public Awareness	3	Appendix 5: Wrap Up Session	26
1.5 Community Population and Participation.....	3	Appendix 6: Follow-up Meeting	27
 Protecting and Sustaining the Environment	4		
2.1 Areas presented to participants.....	4		
2.2 Areas identified by participants	4		
2.3 Areas of importance to Protecting and Sustaining the Environment..	4		
 Encouraging Conservation Planning.....	6		
3.1 Areas presented to participants	6		
3.2 Areas identified by participants	6		
3.3 Areas of importance to Encouraging Conservation Planning	6		
 Building Healthier Communities	8		
4.1 Areas presented to participants.....	8		
4.2 Areas identified by participants	8		
4.3 Areas of importance to Building Healthier Communities	8		
 Encouraging Sustainable Economic Development.....	10		
5.1 Areas presented to participants.....	10		
5.2 Areas identified by participants	10		
5.3 Areas of importance to Encouraging Sustainable Economic Development	10		
 Mixed Use	12		
6.1 Areas identified in the Draft Plan	12		
6.2 Areas identified by participants	12		
 Overlapping Goals	15		
7.1 Areas identified for multiple goals	15		

Chapter 1: Introduction

1.1 Context

The Nunavut Planning Commission (NPC) is preparing a land use plan to guide and direct resource use and development in the Nunavut Settlement Area (NSA). As part of its efforts, the NPC is facilitating discussions in each Nunavut community on land use and resource management issues. Information that is obtained from these discussions will be used to inform decisions regarding the further development of the Nunavut Land Use Plan (NLUP).

1.2 Purpose

This report presents information obtained during the NPC's visit to the community of Resolute. The purpose of the report is to inform decisions regarding the further development of the NLUP, ensuring that the plan reflects the priorities and values of residents.

It is important to note that the information contained in the Community Report will be considered in conjunction with all other feedback when revising the DNLUP.

1.3 Methodology

Information was presented to and received from participants in Resolute in accordance with the Nunavut Planning Commission's Community Engagement Strategy (Engagement Strategy). The Engagement Strategy provides for the following methods for presenting and receiving information;

- **Open house;** information contained in the Draft Nunavut Land Use Plan (DNLUP) was presented on 7 multi lingual large format poster boards. Participants were encouraged to review the posters, ask questions and provide feedback. Comments and questions were recorded by NPC staff and are contained in Appendix 1.
- **Elected Officials Meeting;** The NPC Chairperson and NPC staff met with senior and elected officials in the community. The development process for the DNLUP, its content and next steps were presented.

Comments and questions were recorded during the session and are contained in Appendix 2.

- **Public Workshop;** A formal presentation of the Draft Plan content was provided to participants, including a slide overview of its content. Following the presentation, questions and comments were received from participants. The questions, comments and responses are contained in Appendix 3.

A mapping session followed the presentation of the Draft Plan. The mapping session involved discussions regarding the topics presented in the DNLUP and encouraged participants to identify additional areas and issues important for inclusion in a NLUP. Information received during this session was recorded by NPC staff and is included in Appendix 4.

- **Wrap Up Session;** Staff was available to discuss the areas identified during the mapping and identify any additional issues or areas of interest. Information received during this session was recorded by NPC staff and is included in Appendix 5.

Areas that participants identified during mapping sessions as important to a particular goal have, in the majority of cases, been included in this report as they were recorded. In instances where participants identified an area that was better suited to another goal, the area has been reclassified to the more suitable goal and has been verified as appropriate to do so by the Community.

A follow-up meeting was held on May 16, 2013 to review a draft version of this report with the Hamlet Council, Hunters and Trappers Organization, and Community Lands and Resource Committee. A summary of this meeting is included in Appendix 6.

1.4 Public Awareness

The NPC raised public awareness regarding its visit to Resolute in accordance with the Engagement Strategy.

The DNLUP and supporting materials were mailed to the Mayor and Council of Resolute, the Hunters and Trappers

Organizations (HTO) in September 2012. In addition, letters of invitation were sent to the Resolute Mayor and Council and HTO in advance of the NPC's visit to advise of the meetings and to encourage participation. Follow up phone calls were also made.

Public notice of the various events was provided in the following ways:

- **Nunatsiaq News and Nunavut News/North;** notice of community meetings were posted in both newspapers a minimum of 45 days in advance.
- **Co-op cable TV;** notice of community meetings was run a minimum of 45 days in advance for one week and run again for no less than 14 days before the meetings.
- **Community radio;** notices were read by the hosts and a live interview with the Commission Chairperson was conducted.
- **Community bulletin boards;** notices were posted on bulletin boards around the community 45 days and again 14 days in advance of the meetings.
- **Community mail drop;** one page flyers that announced the meetings and their purpose were delivered to the post office in each community for all mail boxes that accept unaddressed ad-mail.
- **nunavut.ca;** the schedule of community visits, the Draft Plan, and all supporting information was available on the Commission's website.

1.5 Community Population and Participation

Resolute is a community of approximately 215 people (Statistics Canada, 2011 Census). It is located on Cornwallis Island (see Figure 1).

The Commission visited the community on January 28-29, 2013. All events occurred as scheduled. The sessions were attended as follows;

- **Elected Officials Meeting;** the Mayor and members of the Hamlet Council and HTO attended the elected officials meeting.
- **Open house;** approximately 10 people attended the open house to review the Draft Plan.
- **Public Workshop;** approximately 15 people attended the presentation of the DNLUP and facilitated mapping sessions. Information was recorded in 1 mapping group.
- **Wrap Up Session;** approximately 5 people attended the wrap up session.

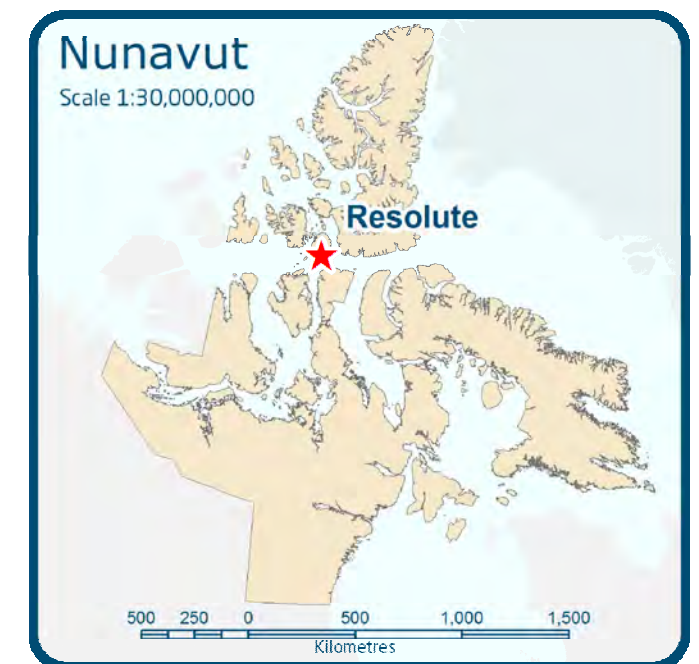


Figure 1. Location of Resolute.

Chapter 2: Protecting and Sustaining the Environment

Protecting and Sustaining the Environment was one of five topics presented to and discussed by participants during the Open House, Elected Officials Meeting, Public Workshop and Wrap up Session, collectively referred to in this document as information sharing and gathering sessions.

2.1 Areas presented to participants

During the information sharing and gathering sessions, participants were presented the following areas and issues as important to Protecting and Sustaining the Environment.

- Key bird habitat sites
- Caribou Habitat sites
- Atlantic Cod Lakes
- Cumulative Impacts
- Transboundary considerations
- Climate change

The importance of these issues and areas to Protecting and Sustaining the Environment was not disputed by participants during the information sharing and gathering sessions.

2.2 Areas identified by participants

Additional areas and issues were identified by participants as important to Protecting and Sustaining the Environment during the information sharing and gathering sessions. These additional areas are;

- Caribou habitat
- Seal breeding grounds
- Polynyas (marine mammals)

2.3 Areas of importance to Protecting and Sustaining the Environment

Areas and issues discussed during the information sharing and gathering sessions as important to Protecting and Sustaining the Environment are illustrated on Map 1, including areas identified in the DNLUP and areas identified by the community. Scanned images of the maps on which community feedback was recorded can be found in Appendix 4.

Based on discussions with participants, the NPC understands that:

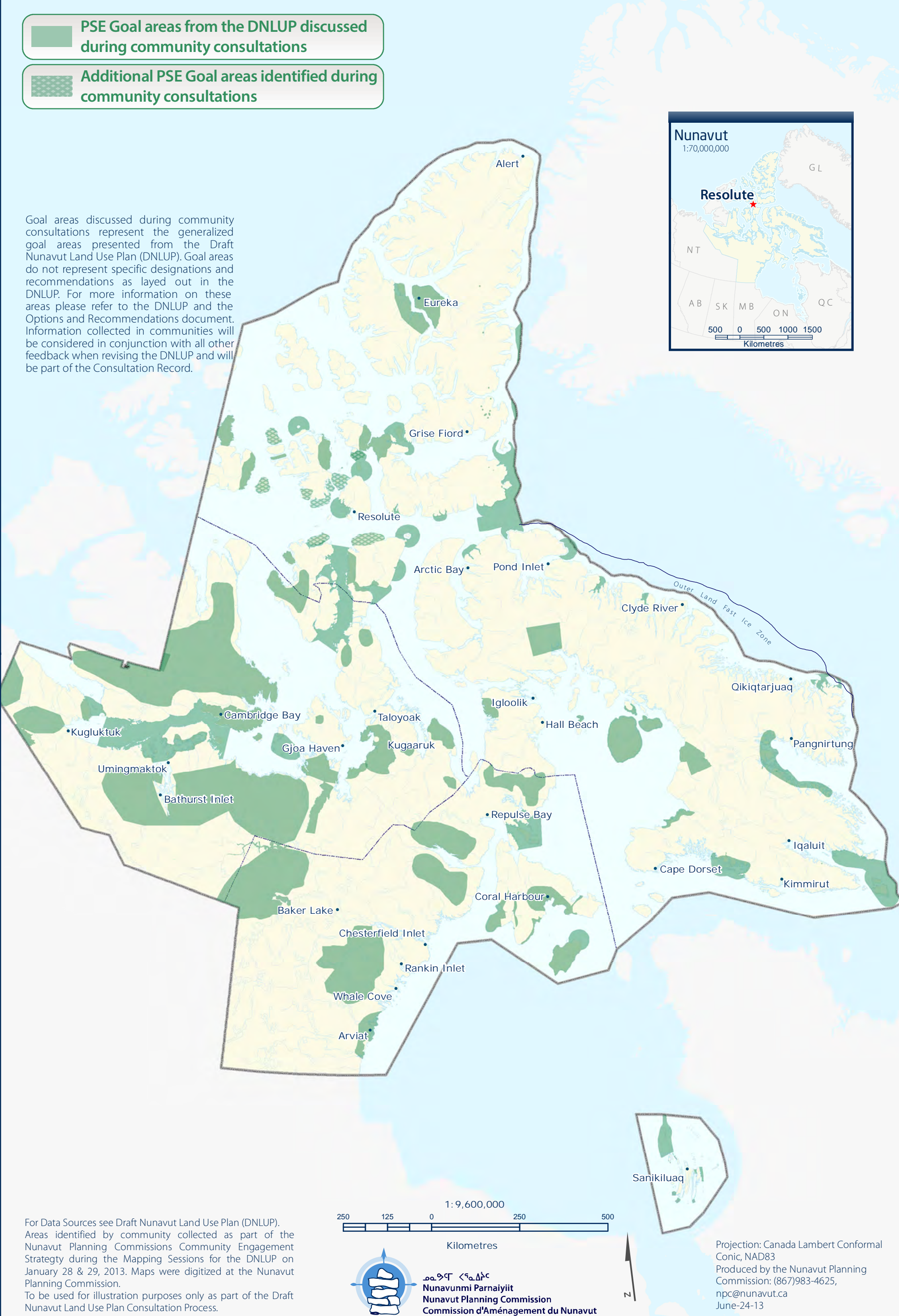
- The areas identified on Map 1 are considered by the Community to be important to Protecting and Sustaining the Environment.
- In these areas, the community would like the NLUP to encourage activities that support environmental protection and management needs, including wildlife conservation, protection and management.

This feedback will be considered in conjunction with all other feedback when revising the DNLUP.



-  PSE Goal areas from the DNLUP discussed during community consultations
-  Additional PSE Goal areas identified during community consultations

Goal areas discussed during community consultations represent the generalized goal areas presented from the Draft Nunavut Land Use Plan (DNLUP). Goal areas do not represent specific designations and recommendations as layed out in the DNLUP. For more information on these areas please refer to the DNLUP and the Options and Recommendations document. Information collected in communities will be considered in conjunction with all other feedback when revising the DNLUP and will be part of the Consultation Record.



Chapter 3: Encouraging Conservation Planning

Encouraging Conservation Planning was one of five topics presented to and discussed by the participants during the information sharing and gathering sessions.

3.1 Areas presented to participants

During the information sharing and gathering sessions, participants were presented the following areas and issues as important to Encouraging Conservation Planning;

- National Parks Awaiting Full Establishment
- Proposed National Parks
- National Marine Conservation Areas
- Thelon Wildlife Sanctuary
- Migratory Bird Sanctuaries
- National Wildlife Areas
- National Historic Sites
- Territorial Historic Sites
- Heritage Rivers

The importance of these issues and areas to Encouraging Conservation Planning was not disputed by participants during the information sharing and gathering sessions.

3.2 Areas identified by participants

Additional areas and issues were identified by participants as important to Encouraging Conservation Planning during the information sharing and gathering sessions. These additional areas are.

- Extension to proposed National Marine Conservation Area
- Bird nesting areas

3.3 Areas of importance to Encouraging Conservation Planning

Areas and issues discussed during the information sharing and gathering sessions as important to Encouraging Conservation Planning are illustrated on Map 2, including areas identified in the DNLUP and areas identified by the community. Scanned images of the maps on which community feedback was recorded can be found in Appendix 4.

Based on discussions with participants, the NPC understands that:

- The areas identified on Map 2 are considered by the Community to be important to Encouraging Conservation Planning.
- In these areas, the community would like the NLUP to encourage activities that support environmental protection and management needs, including wildlife conservation, protection and management.

This feedback will be considered in conjunction with all other feedback when revising the DNLUP.



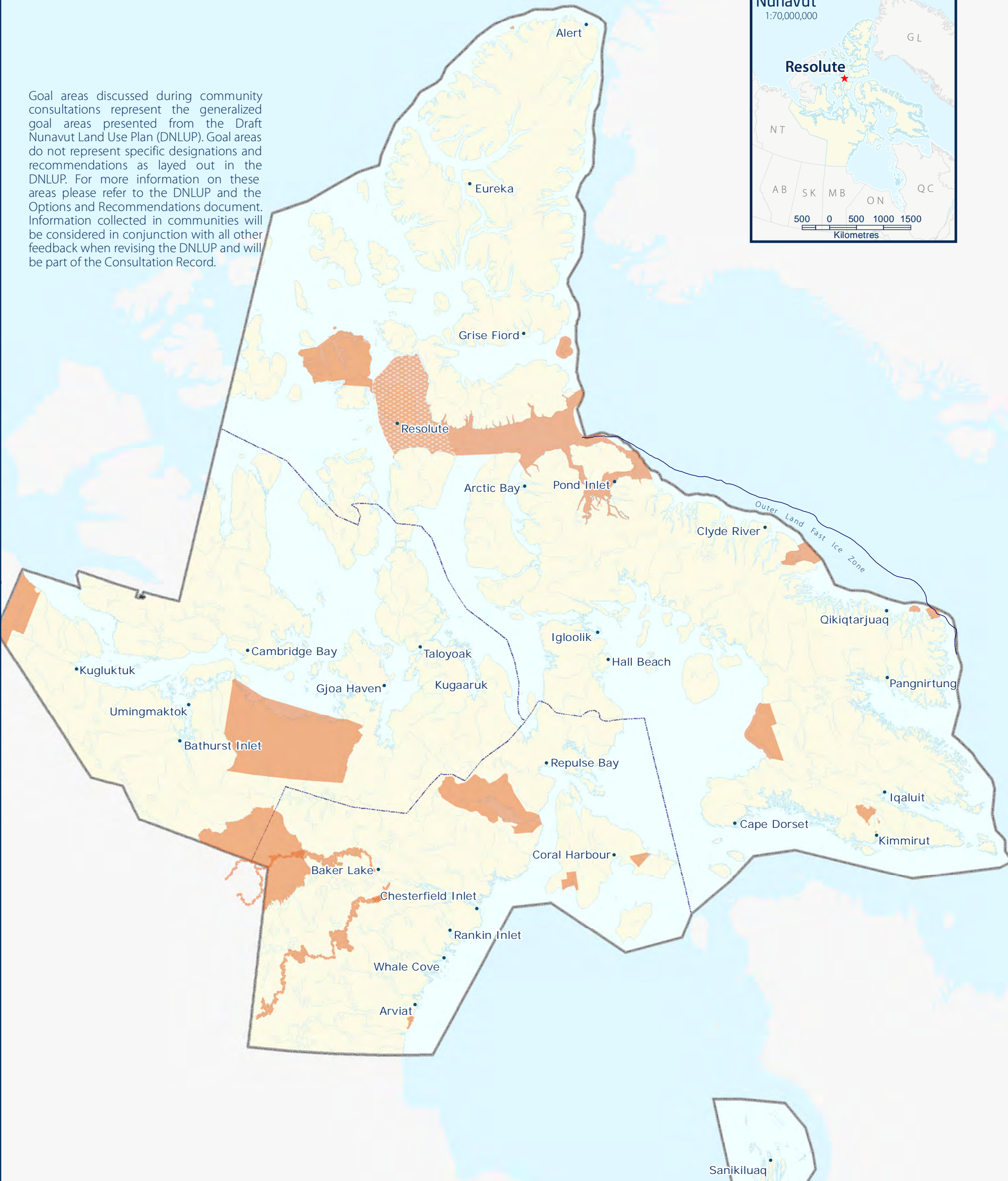


ECP Goal areas from the DNLUP discussed during community consultations



Additional ECP Goal areas identified during community consultations

Goal areas discussed during community consultations represent the generalized goal areas presented from the Draft Nunavut Land Use Plan (DNLUP). Goal areas do not represent specific designations and recommendations as layed out in the DNLUP. For more information on these areas please refer to the DNLUP and the Options and Recommendations document. Information collected in communities will be considered in conjunction with all other feedback when revising the DNLUP and will be part of the Consultation Record.



For Data Sources see Draft Nunavut Land Use Plan (DNLUP). Areas identified by community collected as part of the Nunavut Planning Commissions Community Engagement Strategy during the Mapping Sessions for the DNLUP on January 28 & 29, 2013. Maps were digitized at the Nunavut Planning Commission. To be used for illustration purposes only as part of the Draft Nunavut Land Use Plan Consultation Process.



ᓄᓇᓂᓄᓐ ᐸᓐᓇᐱᓐᓴᓐ
Nunavunmi Parnaiyiit
Nunavut Planning Commission
Commission d'Aménagement du Nunavut



Projection: Canada Lambert Conformal Conic, NAD83
Produced by the Nunavut Planning Commission: (867)983-4625, npc@nunavut.ca
June-24-13

Chapter 4: Building Healthier Communities

Building Healthier Communities was one of five topics presented to and discussed by the participants during the information sharing and gathering sessions.

4.1 Areas presented to participants

During the information sharing and gathering sessions, participants were presented the following areas and issues as important to Building Healthier Communities;

- Areas of Community Interest
- Community Land Use
- Transportation Infrastructure
- Unincorporated Communities
- Alternative Energy Sources
- Community drinking water supplies
- Land remediation
- Northern Contaminated Sites Program
- Aerodromes
- Canadian Forces Station
- Northern Warning System sites

The importance of these issues and areas to Building Healthier Communities was not disputed by participants.

4.2 Areas identified by participants

Additional areas and issues were identified by participants as important to contributing to the goal of Building Healthier Communities during the information sharing and gathering sessions. These additional areas are;

- Hunting/fishing areas

- Drinking water
- Contaminated Sites

4.3 Areas of importance to Building Healthier Communities



Areas and issues discussed during the information sharing and gathering sessions as important to Building Healthier Communities are illustrated on Map 3, including areas identified in the DNLUP and areas identified by the community. Scanned images of the maps on which community feedback was recorded can be found in Appendix 4.

Based on discussions with participants, the NPC understands that:

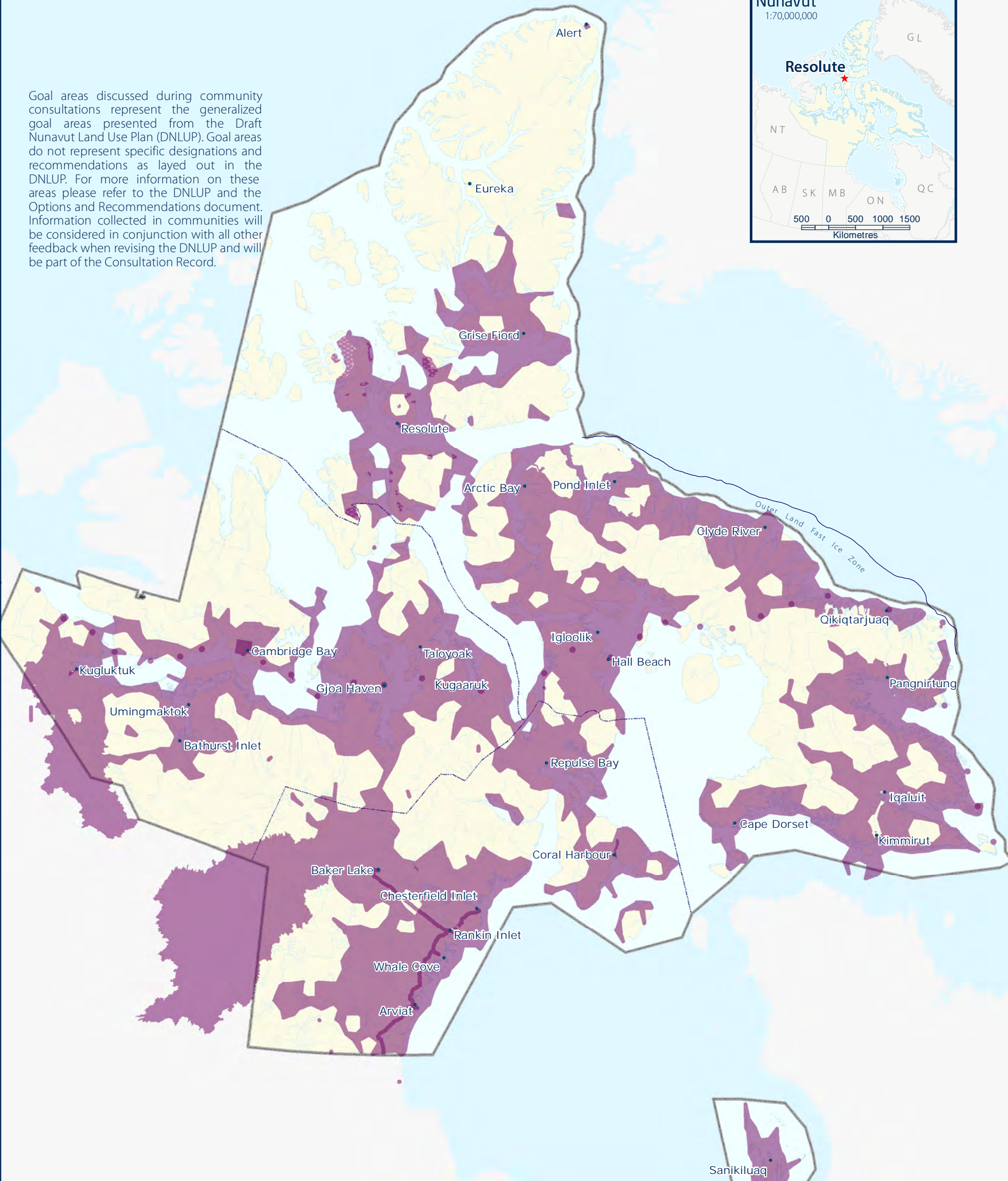
- The areas identified on Map 3 are considered by the Community to be important to Building Healthier Communities.
- In these areas, the community would like the NLUP to encourage activities that support community needs and cultural priorities.

This feedback will be considered in conjunction with all other feedback when revising the DNLUP.

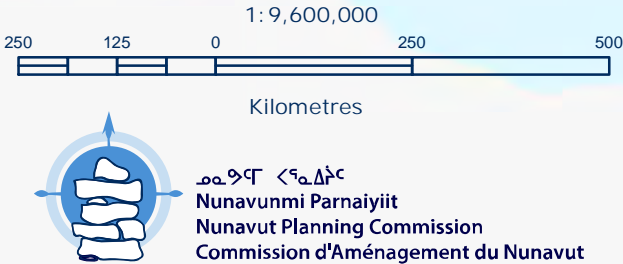


-  BHC Goal areas from the DNLUP discussed during community consultations
-  Additional BHC Goal areas identified during community consultations

Goal areas discussed during community consultations represent the generalized goal areas presented from the Draft Nunavut Land Use Plan (DNLUP). Goal areas do not represent specific designations and recommendations as layed out in the DNLUP. For more information on these areas please refer to the DNLUP and the Options and Recommendations document. Information collected in communities will be considered in conjunction with all other feedback when revising the DNLUP and will be part of the Consultation Record.



For Data Sources see Draft Nunavut Land Use Plan (DNLUP). Areas identified by community collected as part of the Nunavut Planning Commissions Community Engagement Strategy during the Mapping Sessions for the DNLUP on January 28 & 29, 2013. Maps were digitized at the Nunavut Planning Commission. To be used for illustration purposes only as part of the Draft Nunavut Land Use Plan Consultation Process.



Projection: Canada Lambert Conformal Conic, NAD83
Produced by the Nunavut Planning Commission: (867)983-4625, npc@nunavut.ca
June-24-13

Chapter 5: Encouraging Sustainable Economic Development

Encouraging Sustainable Economic Development was one of five topics presented to and discussed by the participants during the information sharing and gathering sessions.

5.1 Areas presented to participants

During the information sharing and gathering sessions, participants were presented with the following areas important to Encouraging Sustainable Economic Development;

- Mineral Exploration and Production
- Oil and Gas Exploration
- Commercial Fisheries

The importance of these issues and areas to Encouraging Sustainable Economic Development was not disputed by participants during the information sharing and gathering sessions.

5.2 Areas identified by participants

Additional areas and issues were identified by participants as important to Encouraging Sustainable Economic Development during the information sharing and gathering sessions. The additional areas identified are;

- Sports hunting

5.3 Areas of importance to Encouraging Sustainable Economic Development

Areas and issues discussed during the information sharing and gathering sessions as important to Encouraging Sustainable Economic Development are illustrated on Map 4, including areas identified in the DNLUP and areas identified by the community. Scanned images of the maps on which community feedback was recorded can be found in Appendix 4.

Based on discussions with participants, the NPC understands that:

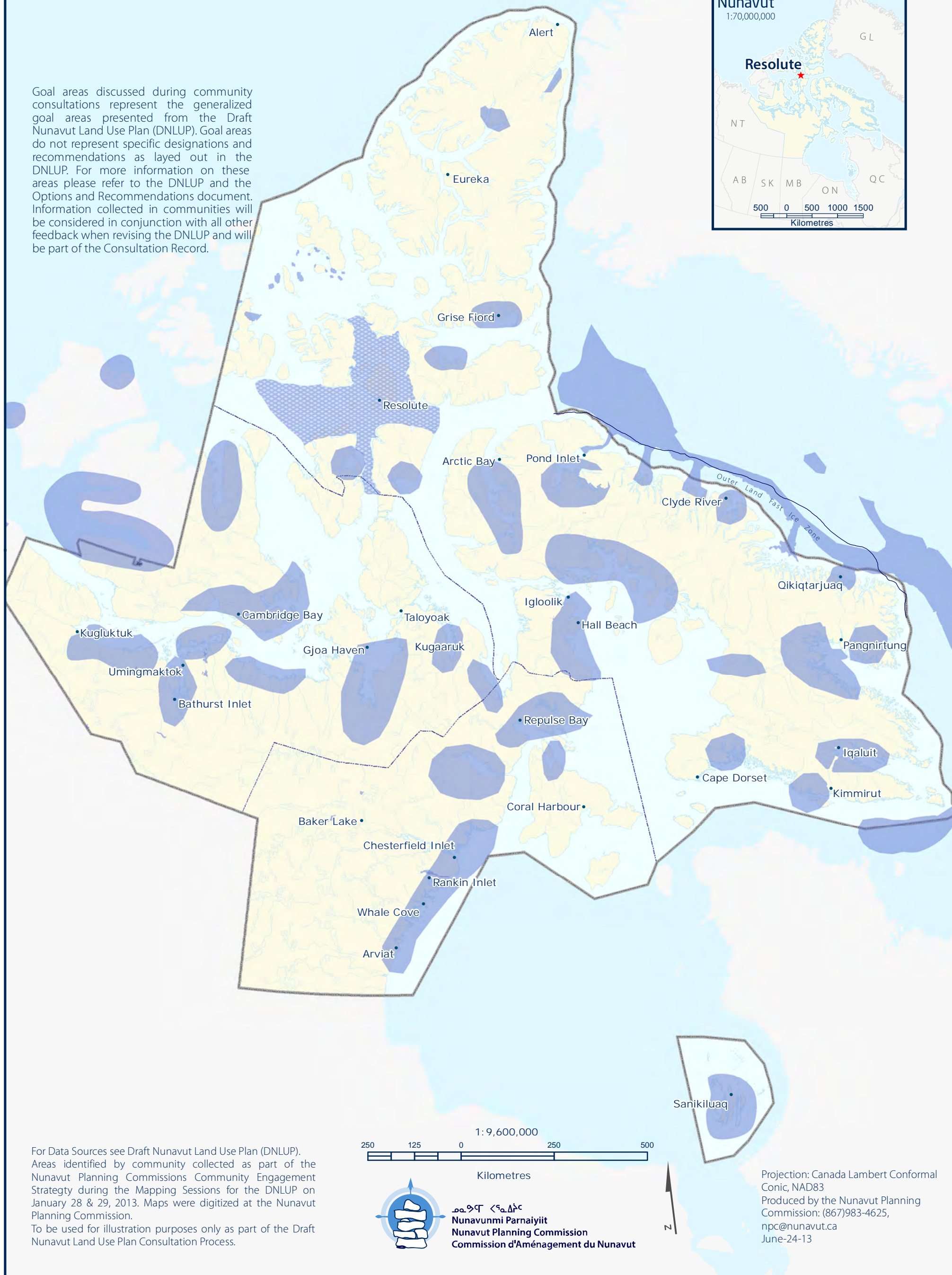
- The areas identified on Map 4 are considered by the Community to be important to Encouraging Sustainable Economic Development.
- In these areas, the community would like the NLUP to encourage activities that support economic opportunities and needs.

This feedback will be considered in conjunction with all other feedback when revising the DNLUP.



Additional ESED Goal areas identified during community consultations

Goal areas discussed during community consultations represent the generalized goal areas presented from the Draft Nunavut Land Use Plan (DNLUP). Goal areas do not represent specific designations and recommendations as layed out in the DNLUP. For more information on these areas please refer to the DNLUP and the Options and Recommendations document. Information collected in communities will be considered in conjunction with all other feedback when revising the DNLUP and will be part of the Consultation Record.



For Data Sources see Draft Nunavut Land Use Plan (DNLUP). Areas identified by community collected as part of the Nunavut Planning Commissions Community Engagement Strategy during the Mapping Sessions for the DNLUP on January 28 & 29, 2013. Maps were digitized at the Nunavut Planning Commission.

To be used for illustration purposes only as part of the Draft Nunavut Land Use Plan Consultation Process.

ᓄᓇᖅᓴᑦ ᐸᓇᐃᓴᑦ
Nunavunmi Parnaiyiit
Nunavut Planning Commission
Commission d'Aménagement du Nunavut

Projection: Canada Lambert Conformal
Conic, NAD83
Produced by the Nunavut Planning
Commission: (867)983-4625,
npc@nunavut.ca
June-24-13

6.1 Areas identified in the Draft Plan

The DNLUP identifies areas important for a variety of uses. These areas were presented to participants during the workshop as Mixed Use Areas. These areas, as they occur around the community, are illustrated on Map 5.

6.2 Areas identified by participants

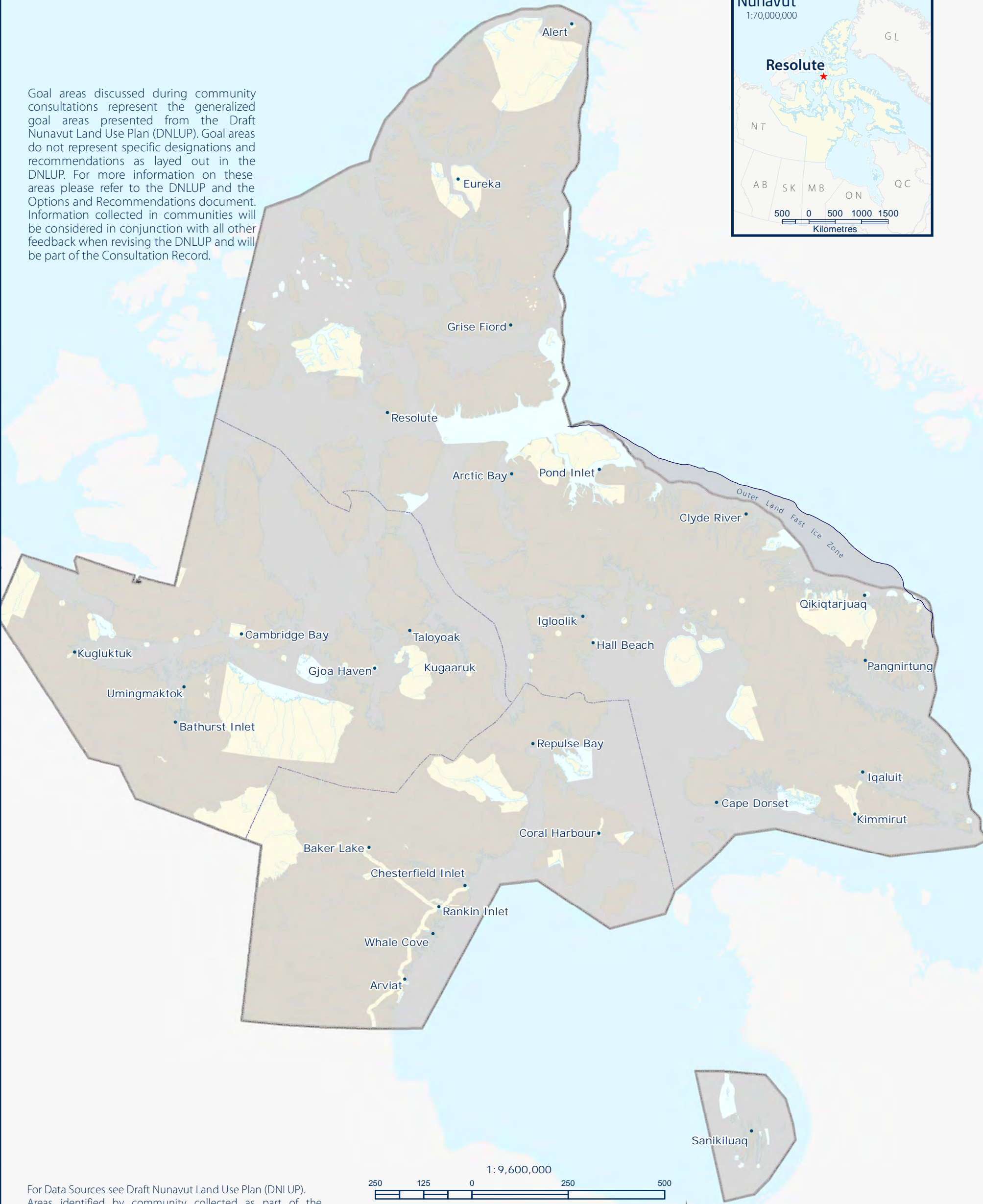
No additional areas were identified as Mixed Use by participants. However, some areas identified as Mixed Use in the DNLUP were considered by participants to require additional protection because of their particular qualities. These areas and the goals they are important for are identified on Map 6.





MU Goal areas from DNLUP discussed during community consultations

Goal areas discussed during community consultations represent the generalized goal areas presented from the Draft Nunavut Land Use Plan (DNLUP). Goal areas do not represent specific designations and recommendations as layed out in the DNLUP. For more information on these areas please refer to the DNLUP and the Options and Recommendations document. Information collected in communities will be considered in conjunction with all other feedback when revising the DNLUP and will be part of the Consultation Record.



For Data Sources see Draft Nunavut Land Use Plan (DNLUP). Areas identified by community collected as part of the Nunavut Planning Commissions Community Engagement Strategy during the Mapping Sessions for the DNLUP on January 28 & 29, 2013. Maps were digitized at the Nunavut Planning Commission. To be used for illustration purposes only as part of the Draft Nunavut Land Use Plan Consultation Process.



Nunavunmi Parnaiyiit
Nunavut Planning Commission
Commission d'Aménagement du Nunavut



Projection: Canada Lambert Conformal Conic, NAD83
Produced by the Nunavut Planning Commission: (867)983-4625, npc@nunavut.ca
June-24-13

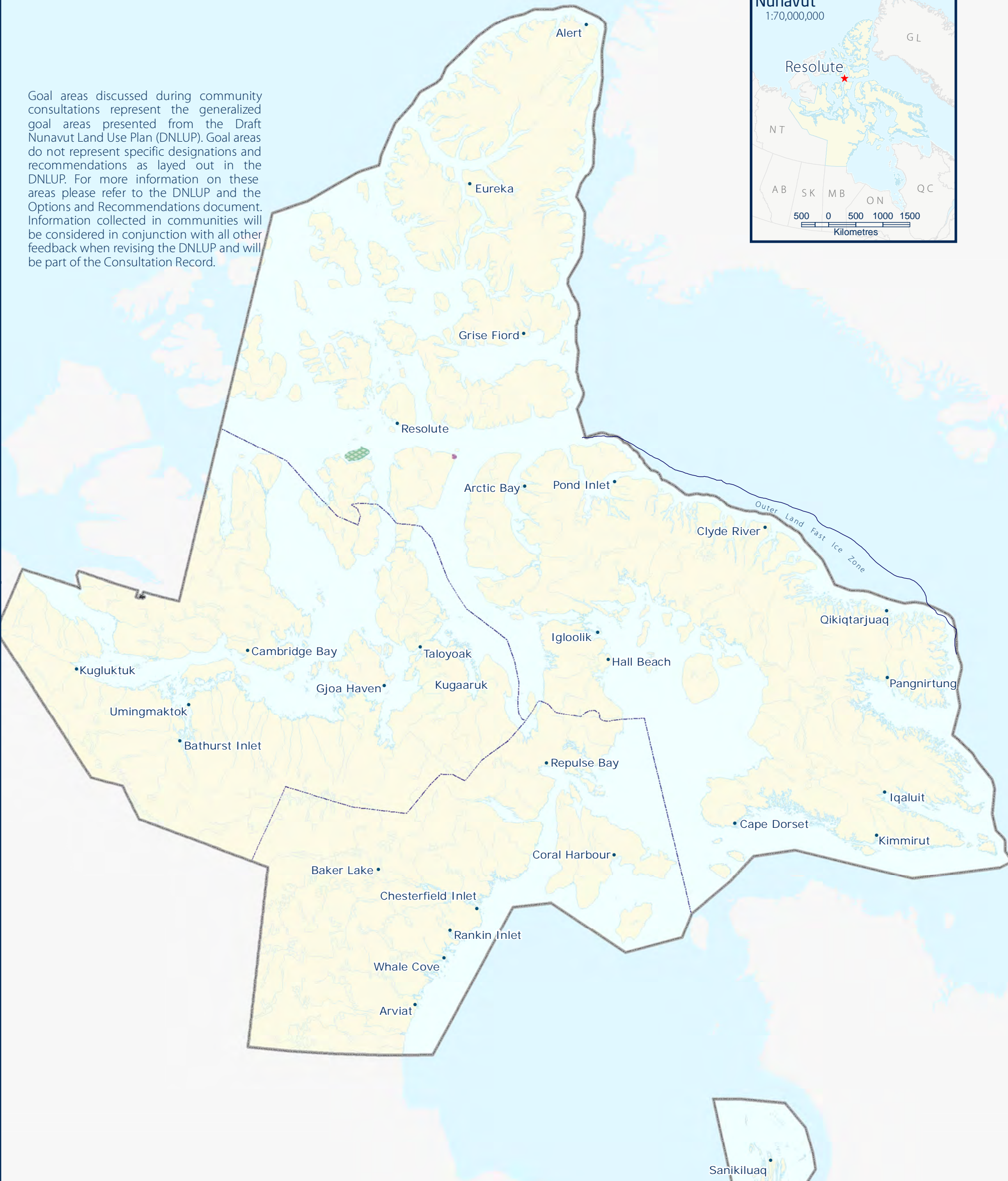


Additional PSE Goal areas identified during community consultations



Additional BHC Goal areas identified during community consultations

Goal areas discussed during community consultations represent the generalized goal areas presented from the Draft Nunavut Land Use Plan (DNLUP). Goal areas do not represent specific designations and recommendations as layed out in the DNLUP. For more information on these areas please refer to the DNLUP and the Options and Recommendations document. Information collected in communities will be considered in conjunction with all other feedback when revising the DNLUP and will be part of the Consultation Record.



For Data Sources see Draft Nunavut Land Use Plan (DNLUP). Areas identified by community collected as part of the Nunavut Planning Commissions Community Engagement Strategy during the Mapping Sessions for the DNLUP on January 28 & 29, 2013. Maps were digitized at the Nunavut Planning Commission. To be used for illustration purposes only as part of the Draft Nunavut Land Use Plan Consultation Process.



Nunavunmi Parnaiyiit
Nunavut Planning Commission
Commission d'Aménagement du Nunavut



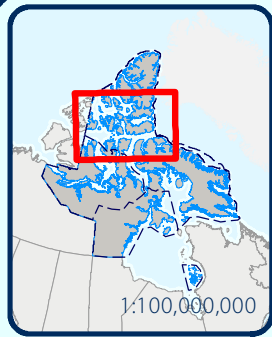
Projection: Canada Lambert Conformal Conic, NAD83
Produced by the Nunavut Planning Commission: (867)983-4625, npc@nunavut.ca
April-24-13

7.1 Areas identified for multiple goals

All areas discussed with the community as important for a particular goal are shown on Map 7. In some instances, areas have been identified as important for multiple goals. These areas, and the specific goals they are important to, are also shown on Map 7. In these areas, the NPC will take all of the identified goals and all other feedback into consideration when revising the DNLUP.

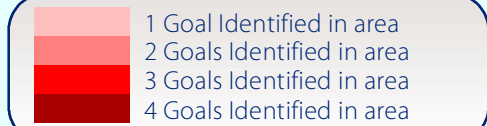


Resolute • Map 7 Overlapping Goal Areas

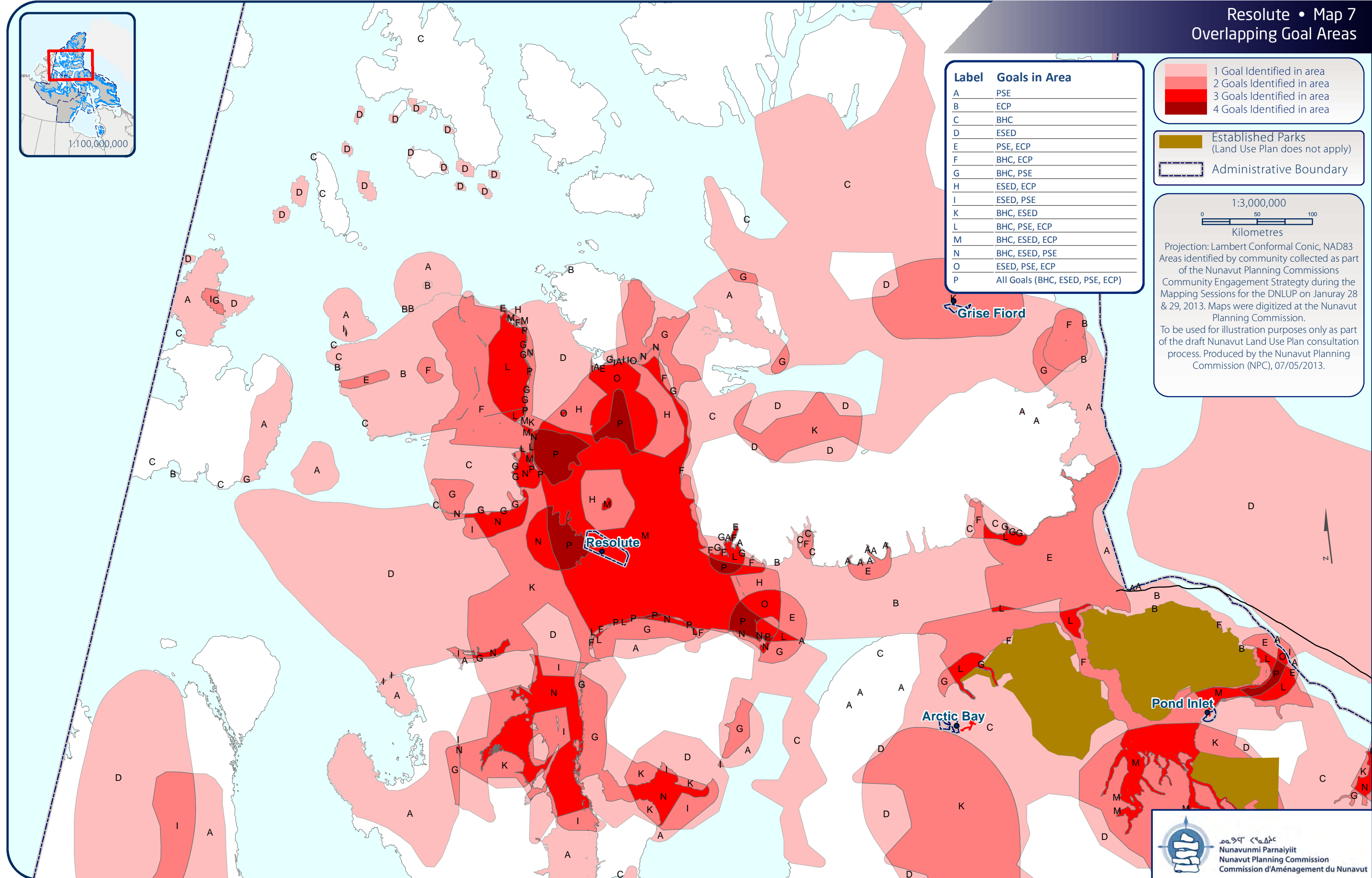


1:100,000,000

Label	Goals in Area
A	PSE
B	ECP
C	BHC
D	ESED
E	PSE, ECP
F	BHC, ECP
G	BHC, PSE
H	ESED, ECP
I	ESED, PSE
K	BHC, ESED
L	BHC, PSE, ECP
M	BHC, ESED, ECP
N	BHC, ESED, PSE
O	ESED, PSE, ECP
P	All Goals (BHC, ESED, PSE, ECP)



Projection: Lambert Conformal Conic, NAD83
Areas identified by community collected as part of the Nunavut Planning Commissions Community Engagement Strategy during the Mapping Sessions for the DNLUP on Januray 28 & 29, 2013. Maps were digitized at the Nunavut Planning Commission.
To be used for illustration purposes only as part of the draft Nunavut Land Use Plan consultation process. Produced by the Nunavut Planning Commission (NPC), 07/05/2013.



Appendix 1: Open House

During the open house, participants raised the following issues:

- Bird area designated to the south (238) is also important for fish and narwhal
- Wants a marine wildlife conservation area South and West of Resolute because beluga molt there and there is also caribou crossing there.
- We support the other communities in what they say for their areas.
- Thule sites close to Resolute (historic sites).
- More research is needed north of Resolute. There are animals here year round.
- The identified caribou sea ice crossing between Somerset Island and Prince of Whales Island (PSE-R3 (57)) is used, and caribou also cross between Prince of Whales Island and Bathurst Island.
- Conserve all of Polar Bear Pass. There's already drilling there and we don't want that. Want it fixed (fence it off or fill it).
- We need to protect East side of Bathurst Island. Save the caribou
- Creswell Bay is very important. There are lots of fish and wildlife there.
- Concerned about year round shipping and impacts on sea ice crossings



Appendix 2: Elected Officials Meeting

The elected officials meeting was attended by the Mayor and members of the Hamlet Council and HTO. During the meeting, participants raised the following issues:

- Who is responsible for cleaning up waste sites?
 - The Commission answered that government is often responsible.
- How much power does the plan have? Will anyone listen?
 - The Commission answered that once it is approved it will be a legally binding document and everyone must follow it.
- Is NTI on board with this? There was a producing well on Cameron Island where there is a Peary caribou herd. We want it protected. NTI says no, you can't do that.
 - The Commission answered that NTI supports the work of the Commission.
- Leona Aglukkaq has said the government has an economic development agenda. "Use it or lose it". How much power do you really have? Are there conflicts between the pro development stance and what the people want?
 - The Commission answered that the plan is important to guide and direct resource use and development. Yes, there is a strong interest in economic development, but industry also wants to know where not to go.

Appendix 3: Questions and Answers

During the community workshop, there was a question and answer period, which included a discussion of the following topics:

- Have government departments identified areas they don't want NPC to touch? If so, can Resolute have a say in this?
 - The Commission answered that Government has identified important areas (not areas they don't want NPC to touch). Also, for example DND wants to know where residents are concerned about activities. Once we know, we will bring these concerns forward.
- Last (military?) exercise included 75 snow machines, twin otters, and helicopters. We asked them to tell us where and when but they just went everywhere they wanted. We want to have a say in where these activities take place. NPC should take community views into account.
 - The Commission answered that a priority for today is to listen to what people have to say and list all the main community concerns.
- Parks are being developed like Lancaster Sound and Bird Sanctuaries. Will they be in the land use plan?
 - The Commission answered that they are included in the plan as conservation areas.
- On Somerset Island (Cunningham Inlet?) there is a private business to observe belugas with tourists. They made an airstrip without notifying anyone. We had no say. What kind of power do Inuit have if they say no and they just go ahead and use it?
 - The Commission answered that this is not supposed to happen on IOL without consulting the QIA and CLARC.
- Is there any timeline you're looking at? We know about a coal mine going in on Ellesmere Island. Are these going to be grandfathered? Is the LUP retroactive so mining won't rush in?
 - The Commission answered that projects that already exist will be grandfathered. Any projects that are looking to change will have to go through the regulatory process but if it's before the land use plan is approved, it will be grandfathered.



Appendix 4: Community Workshop Scanned Maps

One group completed the mapping session to identify important areas. This Appendix contains the maps that were used by participants to identify areas that are important to the following land use planning goals:

- Protecting and Sustaining the Environment
- Encouraging Conservation Planning
- Building Healthier Communities
- Encouraging Sustainable Economic Development
- Mixed Use

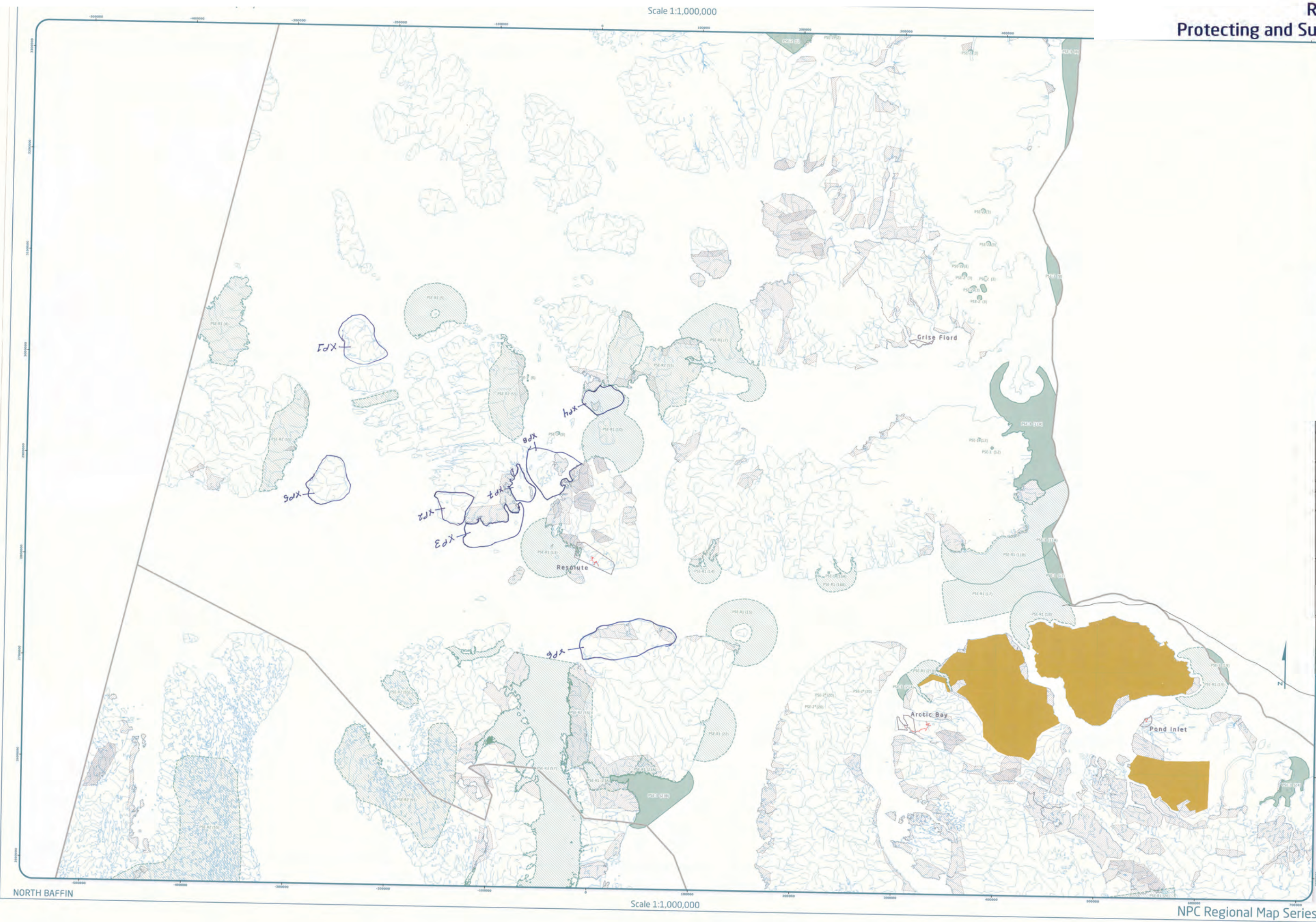
Also included on each map is a reference table that includes the specific values that were identified for the area.

During the mapping portion of the community workshop, the following concerns were raised that did not apply to a specific area that was identified on the maps:

- The mining companies have lot of claims and the public should have been informed so Inuit don't have false sense of ownership of the land.
- Questions about grandfathering and existing claims. Discussion that areas can still be identified as important to the community even though there may already be claims there.
- Concerned about a private airstrip constructed without permission near Cunningham Inlet for tourists to watch whales.
- Concerned that cruise ships will now start to visit areas the community identifies as important.
- Polar bears are mobile and I want to make it clear most of the sea ice and water should be protected. The whole water is use by all mammals, so how do we handle and try to curb this if the shipping traffic is increased, as we know it will.

- The key bird habitat identified in Draft Plan to the north of Cornwallis Island (PSE-R1(10)) is also an important area for walrus (polynya).
- The mammals have widened their migration routes since the oceans have started to melt earlier every year; this even includes bowhead whales. They are even going far as Taloyoak and Cambridge Bay from the Atlantic Ocean side.
- The community land use information that has been collected shows the hunting areas of the community.
- Migration routes need to be protected where narwhales are coming in from the Arctic Ocean, not from Baffin Bay as has been told for many years by government researchers.
- Can we ask for environmental assessment for the lakes around here, including the sounding land mass on our island and the community of Resolute Bay?
- All the islands have muskox sport hunting
- For economic development, musk-ox and seal hides should be included.

Resolute - Group 1 Results
Protecting and Sustaining the Environment



Designations	Permitted Uses	Prohibited Uses
PSE-1	Tourism, Recreation, Research	All Other Uses
PSE-2	Tourism, Recreation, Research	All Other Uses
PSE-3	Tourism, Recreation, Research, Marine Infrastructure, Marine Communications and Electrical Cables	All Other Uses

PSE Recommendation	
Reference Table for Recommendations	
PSE-01	Project Provisions located in a Key Bird Habitat Site should take into account impacts on the migratory birds that stop on the site.
PSE-02	Project Provisions located in historic caribou calving grounds should take into account impacts on caribou calving, deer calving areas and migration routes.
PSE-03	Project Provisions located in and/or near known caribou use or crossing areas should take into account impacts that may impact the ability of caribou to cross the ice.
PSE-04	Project Provisions located in portions of the Great Bear Lake watershed in Nunavut should take into account transboundary impacts that may reduce the conservation value of the watershed.

Code	Comments
XP1	Important wintering area for caribou. Would like to see this island (Cameron Island - Benthorn Creek) protected.
XP2	During winter caribou are here as well, this corner
XP3	Bearded and Ring Seal breeding ground
XP4	Open polynya where walrus stay there all year. Also seals of all kinds.
XP5	This little island has caribou as well. In winter they do not seem to lose their fat. I would like to have protected. Martin Island. The sea crossing between the islands should also be protected.
XP6	this area used to have no caribou, they left this area long ago and are starting to make a comeback to this land, and it should now be protected. The caribou area between the island is enlarging and requires protection on both islands.
XP7	this area is the habitat of walrus and should be protected because this sea ice area is a polynya and many sea mammals winter here.
XP8	Caribou crossing area

1 This area is the habitat of walrus and should be protected because this sea ice area is a polynya and many sea mammals winter here.

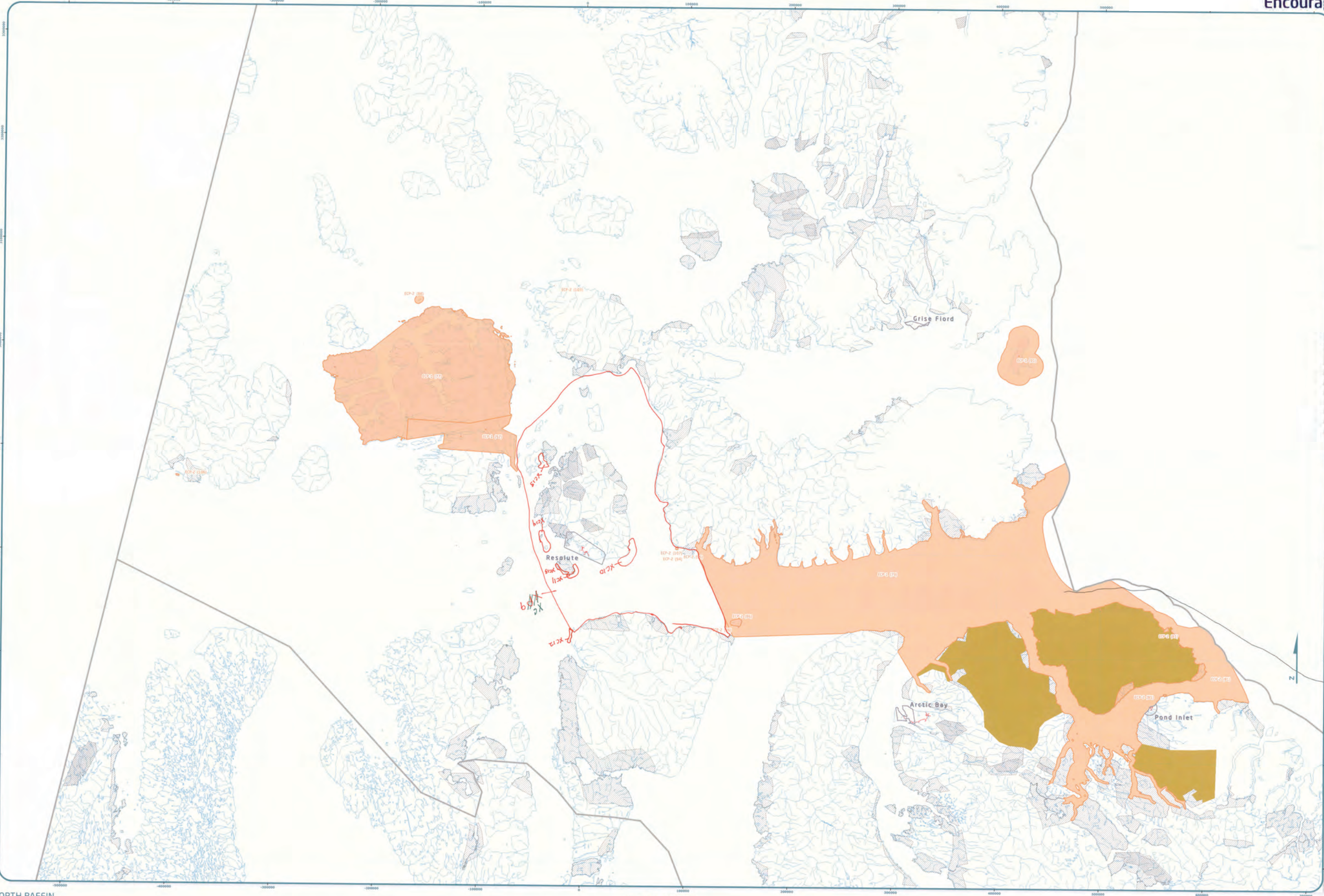
98 Caribou crossing area

9		
5		
20		
21		
22		
23		
24		
25		
26		
27		
28		
29		
30		

Mike Townsend - Tommy Ouljout
Signature of Musher

100

Resolute - Group 1 Results
Encouraging Conservation Planning



Designations	Permitted Uses	Prohibited Uses
ECP-1	Science, Recreation, Research	All Other Uses
ECP-2	Science, Recreation, Research	All Other Uses
ECP-3	Science, Recreation, Research	All Other Uses
ECP-4	Science, Recreation, Research	All Other Uses
ECP-5	Science, Recreation, Research	All Other Uses
ECP-6	Science, Recreation, Research	All Other Uses
ECP-7	Science, Recreation, Research	All Other Uses
ECP-8	Science, Recreation, Research	All Other Uses
ECP-9	Science, Recreation, Research	All Other Uses
ECP-10	Science, Recreation, Research	All Other Uses
ECP-11	Science, Recreation, Research	All Other Uses
ECP-12	Science, Recreation, Research	All Other Uses
ECP-13	Science, Recreation, Research	All Other Uses
ECP-14	Science, Recreation, Research	All Other Uses
ECP-15	Science, Recreation, Research	All Other Uses

Code	Comments
XC9	Area important around Resolute. Want it added to NMCA
XC10	Nesting ground for Guillemots and Murres
XC11	Nesting ground for Guillemots and Murres
XC12	Nesting ground for Guillemots and Murres
XC13	Nesting ground for Guillemots and Murres, sea gulls, etc.
XC14	Nesting area for Eider Ducks
XC15	Nesting area for Eider Ducks

Community: Resolute
Region: Nunavut
Date: June 18
Community ID: 12345
Map ID: 12345

Signatures of the Community signatory in person:
Name: [Signature]
Signature of Mapper: [Signature]



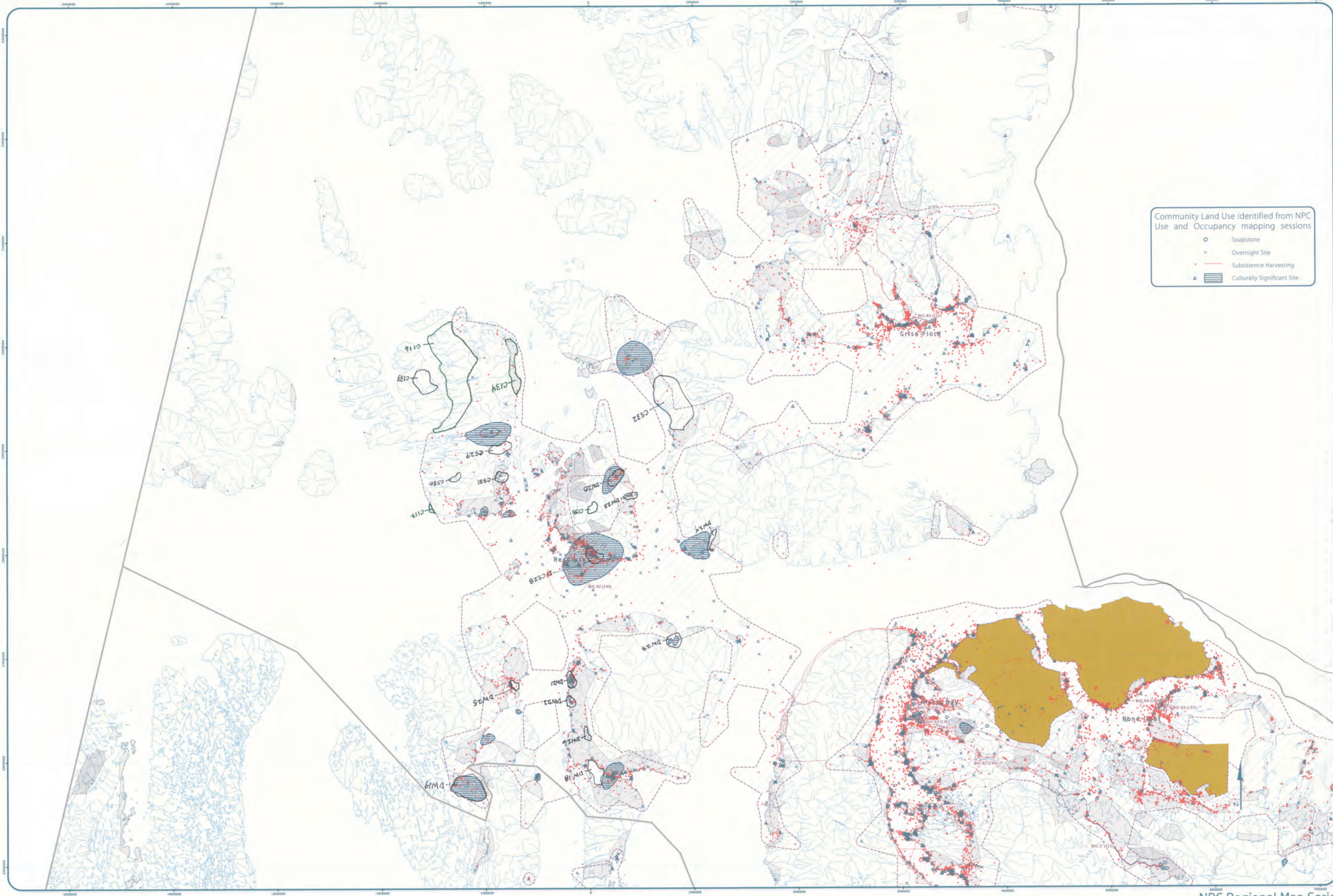
Coordinate System: EPSG:4326
Projection: Lambert Conformal Conic
Datum: North American 1983
False Easting: 0.0000
False Northing: 0.0000
Central Meridian: -95.0000
Standard Parallel 1: 49.0000
Standard Parallel 2: 77.0000
Latitude Of Origin: 49.0000
Units: Meter

Working Draft Sub-regional Map data sources:
For Land Use Designations and Recommendations sources see draft Nunavut Land Use Plan and background information data source documents.
Map created by merging all 1:250,000 maps in Nunavut version 2.0, and selecting all water bodies over 50 hectares in size. Land outside of Nunavut, courtesy of Geomatics. Administrative boundaries consist of NPC draft regional boundaries, created to reflect Regional and Administrative jurisdictions, combined with municipal boundaries, provided by Natural Resources Canada (territorial data). Inuit-Owned Lands courtesy of Nunavut Government. Territorial parks from the Government of Nunavut. National Parks from Parks Canada. Data for areas within municipal boundaries obtained from Natural Resources Canada (territorial data).
This map is to be used for reference purposes only by the NPC.
Any further use of this map or data therein must be authorized by contacting the Nunavut Planning Commission at: (867) 963-4525 or email: nunavut@npc.ca
Monday January 21, 2013

Resolute - Group 1 Results
Building Healthier Communities

BUILDING HEALTHIER COMMUNITIES (BHC)

Scale 1:1,000,000



Community Land Use identified from NPC Use and Occupancy mapping sessions

- Soapstone
- x Overnight Site
- Subsistence Harvesting
- ▲ Culturally Significant Site

Legend

- Roads
- Railways, Utilities and Corridors
- Established Parks (and other land not used)
- Inuit Owned Lands (Surface)
- Inuit Owned Lands (Sub-surface)
- Administrative Boundary

Designations	Permitted Uses	Prohibited Uses
BHC-1	Roads, Railways, Utilities and Corridors	
BHC-2	Roads, Railways, Utilities and Corridors	
BHC-3	All uses except those Prohibited	Mining
BHC-4	Hydro electrical and related infrastructure	
BHC-5	Tourism, Recreation and Research, Municipal Services	
BHC-6	Municipal Services	All other uses
BHC-7	Municipal Services	
BHC-8	Remediation and Reclamation Activities	All other uses
BHC-9	Remediation and Reclamation Activities, DND Operations and Activities	All other uses
BHC-10	DND Operations and Activities	All other uses

Code	Comments
BHC-11	Project Proposals located in the Tuktoyaktuk River Area of Interest should take into account impacts on the cultural value of the area.
BHC-12	Project Proposals located in areas of traditional land use should take into account impacts on the quality and quantity of community drinking water.
BHC-13	Project Proposals located in a community water supply watershed should take into account impacts on the quality and quantity of community drinking water.
BHC-14	Project Proposals located in a Municipal Aerodrome should take into account impacts on aerodrome safety.

Code	Comments
C116	Additional hunting areas.
C117	Hunting here every spring. In summer the shore around the island are full of mammals, such as beluga whales, ringed seals, narwhals and other mammals.
DW18	Drinking water source. Stanwell Fletcher Lake
DW19	Drinking water source. Crooked Lake
DW20	Drinking water source. Eleanor Lake
DW21	Drinking water source. Small Lake
DW22	Drinking water source. Small Lake
DW23	Drinking water source. Laura Lake
DW24	Arctic Char - protect from shipping
DW25	Arctic Char - protect from shipping
DW26	Theona Lake. There are fish here. Needs protection.
DW27	Two lakes in area have fish.
CS28	Cleaning up needed for the airport area and some old military base and where they used to work.
CS29	Hundreds of barrels, 4 or 5 buildings, landing craft
CS30	Misty Fiver area, lots of barrels, large camp
CS31	World War 2 landing craft - open in front - 2 on shore - barrels eroding
CS32	Barrels and houses for oil exploration
C133	INAC identified 6 contaminated sites. 3 areas are class A status, elevated. So contaminated they want fence around it. New. Lots of oil exploration all over Bathurst Island
C134	Contaminated sites on IOL
C135	Old drilling area full of mud mixed with chemicals when flushed up

Working Draft Sub-regional map data sources:
For Land Use Designations and Recommendations sources see draft Nunavut Land Use Plan and background material data source documents.
Use and Occupancy data from NPC Use and Occupancy mapping sessions, 2014 to 2015.
Hillshade created by utilizing SRTM3 data in Hillshade toolset courtesy of ESR User Forums Water bodies created by merging all 2:250,000 scale hydrographic maps in Nunavut, version 2.0, and extracting all water bodies over 50 hectares in size. Land outside of Nunavut, courtesy of Geomatics. Administrative boundaries consist of NPC draft regional boundaries, created to reflect regional land administration jurisdictions, combined with municipal boundaries, provided by Natural Resources Canada cadastre data. Inuit Owned Lands courtesy of Nunavut Government. Territorial parks from the Government of Nunavut. National Parks from Parks Canada. Data for areas within municipal boundaries obtained from Natural Resources Canada cadastre data.
This map is to be used for reference purposes only by the NPC.
Data for areas within municipal boundaries obtained from the Nunavut Planning Commission at (867) 893-4625 or email nrc@nrc.nu.ca
Any further use of this map or data therein must be authorized by the Nunavut Planning Commission at (867) 893-4625 or email nrc@nrc.nu.ca
January 2015

NORTH BAFFIN

Scale 1:1,000,000

NPC Regional Map Series

[illegible]

Code	Comments
XD36	Important commercial Polar Bear hunting - sport hunting. Includes Seals, Polar Bear, Arctic Char, Cod, Narwhal, Beluga
XD37	Polar Bear hunting - local hunters
XD38	Subsistence hunting and sports hunting
XD39	Subsistence hunting and sports hunting
XD40	Polar Bear harvesting and denning
XD41	Polar Bear denning

Review of Planning Commission
 (Submitting Community Plan Map)
 (and the Mapping Fee fee)

Community: Leisure

Location: _____

Region: Town 36

Date: _____

Community Plan: _____

Map # _____

Map 485

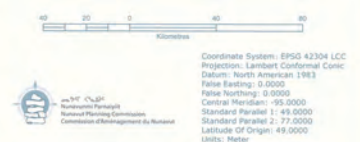
Signatures of the Community signor, in permission
 Form to conduct mapping, within a community.

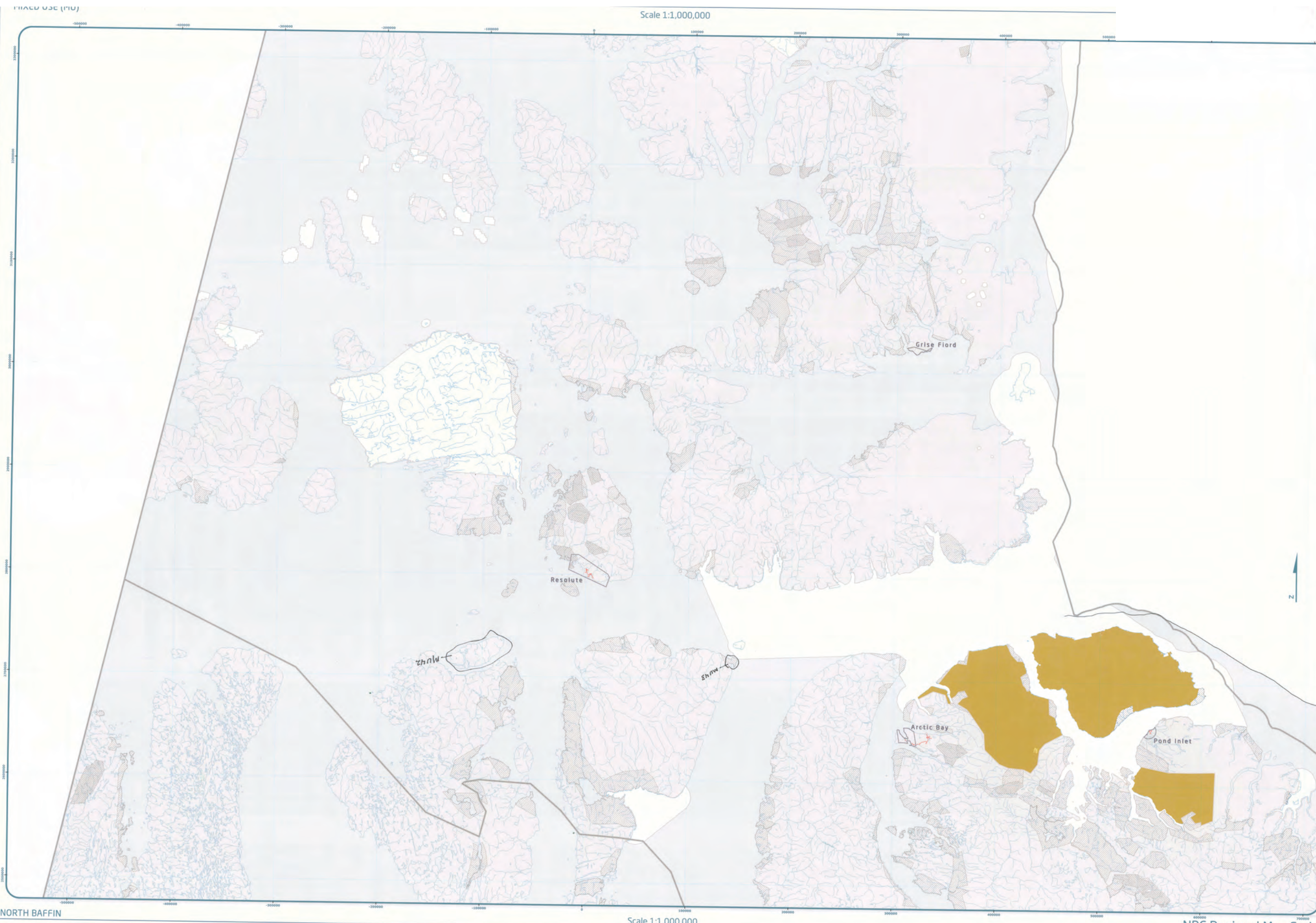
1.		14.	
2.		15.	
3.		16.	
4.		17.	
5.		18.	
6.		19.	
7.		20.	
8.		21.	
9.		22.	
10.		23.	
11.		24.	
12.		25.	
13.		26.	
14.		27.	
15.		28.	
16.		29.	
17.		30.	

Signature of Mapper: _____

Mike Townsend - Tommy Oulijoot

COMMUNITY PLAN MAP # 485

[illegible]



Resolute - Group 1 Results Mixed Use



Designations	Permitted Uses	Prohibited Uses
MU42	Residential	Industrial
MU43	Commercial	Industrial

Code	Comments
MU42	Russell Island has lots of Caribou and muskox and should be protected.
MU43	Old Hudsons Bay Site, where one participant's mother was born. Should be protected

Community	Resolute
Location	
Region	
Date	
Community Size	
Map #	
Signatures of the Community signify as permission form to conduct in applying various documents.	
1. <i>[Signature]</i>	16
2. <i>[Signature]</i>	17
3. <i>[Signature]</i>	18
4. <i>[Signature]</i>	19
5. <i>[Signature]</i>	20
6. <i>[Signature]</i>	21
7. <i>[Signature]</i>	22
8. <i>[Signature]</i>	23
9. <i>[Signature]</i>	24
10. <i>[Signature]</i>	25
11. <i>[Signature]</i>	26
12. <i>[Signature]</i>	27
13. <i>[Signature]</i>	28
14. <i>[Signature]</i>	29
15. <i>[Signature]</i>	30
Signature of Mayor: <i>[Signature]</i>	

Community: *Resolute*

Location: *Map 7 of 5*

Region: *Map 7 of 5*

Date: *Map 7 of 5*

Community Size: *Map 7 of 5*

Map #: *Map 7 of 5*

Signatures of the Community signify as permission form to conduct in applying various documents.

1. *[Signature]* 16

2. *[Signature]* 17

3. *[Signature]* 18

4. *[Signature]* 19

5. *[Signature]* 20

6. *[Signature]* 21

7. *[Signature]* 22

8. *[Signature]* 23

9. *[Signature]* 24

10. *[Signature]* 25

11. *[Signature]* 26

12. *[Signature]* 27

13. *[Signature]* 28

14. *[Signature]* 29

15. *[Signature]* 30

Signature of Mayor: *[Signature]*

Coordinate System: EPSG 42304 UTM
Projection: Lambert Conformal Conic
Datum: North American 1983
False Easting: 0.0000
False Northing: 0.0000
Central Meridian: -95.0000
Standard Parallel 1: 49.0000
Standard Parallel 2: 77.0000
Latitude Of Origin: 49.0000
Units: Meter

Working Draft Sub-regional map data sources:
Habitat created by utilizing Landsat imagery in the Resolute region courtesy of ESR Inc. for various water bodies created by merging of 1:250,000 scale maps in Resolute, version 2.0, and selecting all water bodies over 50 hectares in size. Land outside of Resolute, courtesy of Geomatics. Administrative boundaries consist of NPC sub-regional boundaries, created to reflect Regional Inuit Association jurisdictions, combined with municipal boundaries, provided by Natural Resources Canada cadastral data. Inuit Owned Lands courtesy of Nunavut Tunngavik Incorporated. Territorial parks from the Government of Nunavut National Parks from Parks Canada. Data for areas within municipal boundaries obtained from Natural Resources Canada cadastral data.

This map is to be used for reference purposes only by the NPC.
Commission at: (867) 983-4025 or email: information@npc.nu
Published: January 20, 2012

During the Wrap Up Session, participants raised the following issues:

- It is important to maintain culture, and healthy food from the land is very important.
- Impacts from activities are widespread. Some values extend beyond geographic areas. Oil and gas activities decreased caribou populations for 25 years. Oil and gas to the northwest will impact Resolute and surrounding area a lot.

Appendix 6: Follow-up Meeting

The NPC returned to the community to review a draft version of this report with the Hamlet Council, Hunters and Trappers Organization, and Community Lands and Resource Committee. The meeting included:

- A presentation of a draft version of this report
- An overview of the mapped information that was recorded for each topic:
 - Protecting and Sustaining the Environment
 - Encouraging Conservation Planning
 - Building Healthier Communities
 - Encouraging Sustainable Economic Development
 - Mixed Use
- Potential changes to the classification of a few mapped areas were discussed and agreed to.
- General discussion and comments including:
 - Opportunities to provide additional comments
 - There needs to be Inuktitut names for Polar Bear Pass, Bathurst Island and other “prominent sites”
 - Timelines for completion
 - Concerned about the mess on the land that needs to be cleaned up.
 - Concerned about sonar disturbing wildlife. Also ship propellers.