



June 29, 2015

Ms. Sharon Ehloak, Executive Director
Nunavut Planning Commission
PO Box 2101
Cambridge Bay, Nunavut X0B 0C0

Dear Ms. Ehloak,

Re: Tundra Copper Corp Comments on Draft Nunavut Land Use Plan

I am writing to you on behalf of Tundra Copper Corp (“Tundra”) and our parent company, Kaizen Discovery (“Kaizen”), in order to provide you with information we request that you consider and incorporate into the Nunavut Land Use Plan (“NLUP”). We only recently became active in Nunavut and as such, were not aware of the efforts of the Nunavut Planning Commission (“NPC”) in respect of land use planning in the Kitikmeot.

Tundra’s exploration-stage Coppermine Project is located southwest of the Hamlet of Kugluktuk in the Kitikmeot region. Tundra staked more than 350 square kilometres of Crown Land claims in the Coppermine District in 2013. In late October 2014, Tundra staked claims and applied for prospecting permits covering an additional 3,320 square kilometres. Alongside these claims and prospecting permits, Tundra has filed an Expression of Interest with Nunavut Tunngavik Inc. (NTI) and the Kitikmeot Inuit Association (Kit IA), for exploration on Inuit Owned Lands (IOL), covering land parcels CO-58 and CO-59.

In developing the Coppermine Project, Tundra has consulted extensively with local Inuit and other stakeholders including the Kugluktuk Hunters and Trappers Organization (HTO), the Kitikmeot Inuit Association (KitIA) and the Hamlet Council of Kugluktuk. Letters from these organizations supporting our proposed exploration program are appended.

While Coppermine is in a relatively early stage of exploration, we are very excited about its potential. The Coppermine District has long been known to host relatively small, essentially vein-hosted occurrences of copper, in volcanic rocks that underlie the 2013 claims in the southern part of Tundra’s holdings. While these remain of interest, our primary exploration target focuses on copper mineralization hosted in very shallowly north-dipping sedimentary rocks, in the northern part of the holdings. This style of mineralization is known in rocks of similar age and type elsewhere around the world, and has the potential to form much larger deposits. At Coppermine, the shallow northerly dip of the sedimentary rocks means that the subsurface potential has much greater northwards extent than is currently captured by areas designated as “high mineral potential” (see Map 2 appended).

Accordingly, we would like to request that the NPC amend the area of high mineral potential in the NLUP (see Maps 1 & 2 appended). In the event that we are successful in our exploration efforts we will also need to identify and construct transportation corridors in relation to our properties (all weather or seasonal roads), and would like to request that the future ability to access our mineral claims be grand-parented under the NLUP. We are aware that Tundra would only be permitted to construct such transportation corridors if its proposal meets the requirements of the Nunavut Impact Review Board (“NIRB”) process and any other regulatory requirements.



KAIZEN DISCOVERY

Our understanding is that specific areas around and in the Coppermine Project have been identified as Protected Areas within the current draft of the NLUP, and that there is currently a proposal that mineral exploration and development be prohibited in these areas. Our understanding is also that the Government of Nunavut ("GN") has tabled a general proposal with the NPC which would result in the NLUP prohibiting all exploration and development in areas the GN has identified as "core caribou calving" areas.

These proposals are of great concern to Tundra. Our view is that responsible mineral exploration and development, with careful planning and mitigation measures, is compatible with sustainable environmental practices. The measures that we will be undertaking during our proposed 2015-2016 exploration program are appended, and we believe provide a good example of appropriate and effective mitigations for exploration activities developed in close consultation with the community and incorporating IQ. We look forward to continuing to work closely with Inuit and the local community to ensure our operations do not cause any adverse environmental effects on caribou.

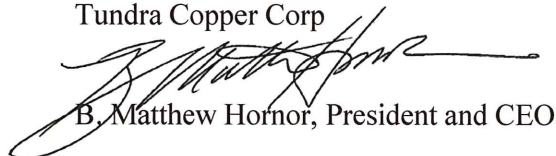
Our understanding is that there are uncertainties and debate surrounding several aspects of caribou research: the location of core calving areas can shift from year to year; the underlying causes for declining caribou populations are incompletely understood; and it is uncertain which measures may be effective in protecting caribou. The lack of recent exploration and mining activity in the western Kitikmeot region indicates that other causes of caribou decline are at play.

We wish to engage with the NPC on these important issues, and to participate in any initiatives associated with the NLUP addressing caribou and the mining industry. Our understanding is that a working group has been developed to advise NPC on this issue, and we would like to participate in these efforts to ensure the potential impacts on our current and future activities are taken into consideration. Again, we would like to emphasize our conviction that responsible and sustainable exploration and development activities can and should be an integral part of a broad-based wildlife management and economic development plan.

We look forward to further discussions on this issue.

Best regards,

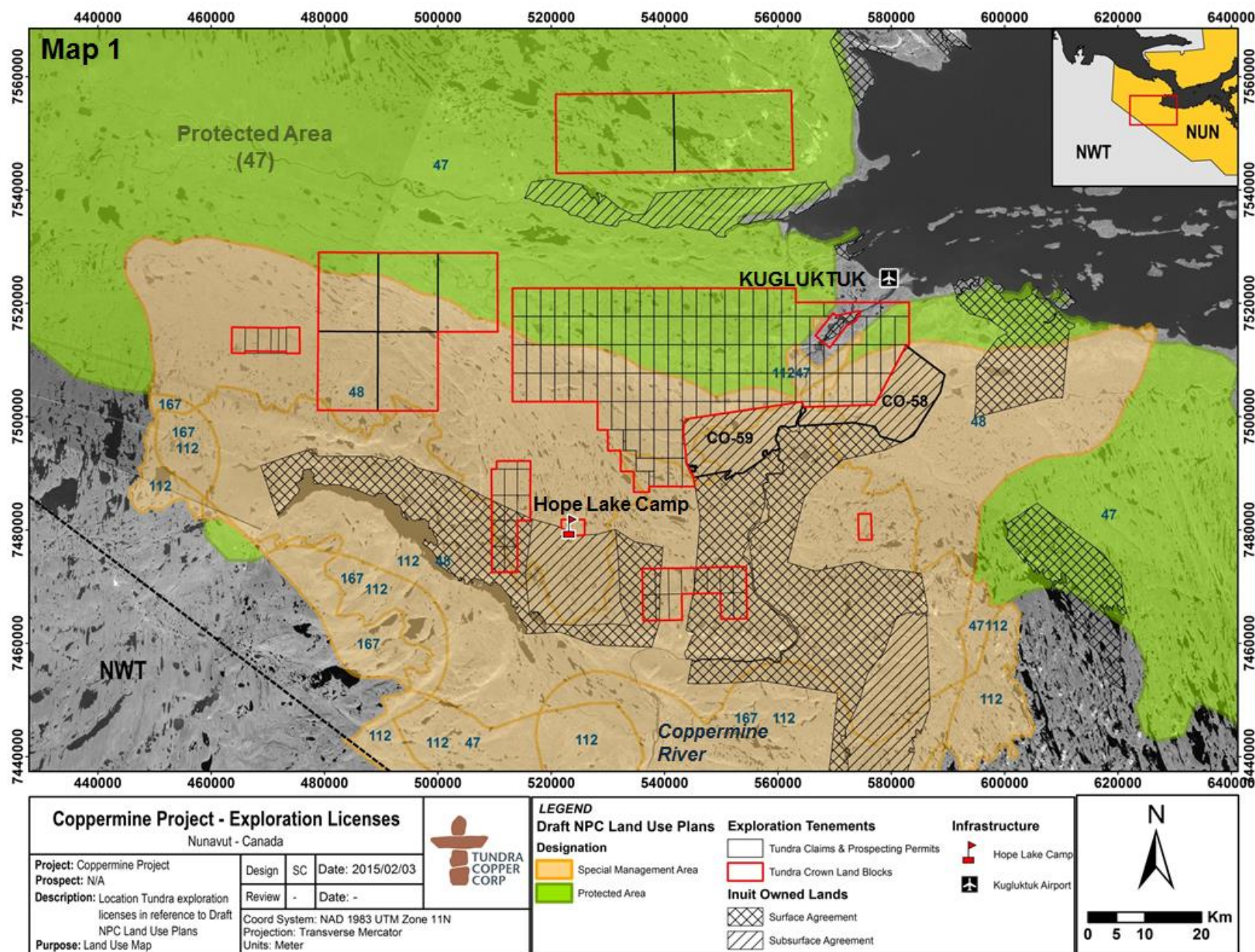
Tundra Copper Corp



B. Matthew Hornor, President and CEO

Cc AANDC - Karen Costello
KitIA - Geoff Clark and Luigi Torretti
Gov. of Nunavut – Hon. Peter Taptuna, Edward Picco, Hon. Monica Ell, Chris Scullion and Bernie MacIsaac
Kugluktuk HTO – David Nivingalok
Nunavut Tunngavik Inc – Keith Morrison
Hamlet of Kugluktuk – Mayor Ryan Nivingalok

Map 1: Location of the Tundra Coppermine Project mineral claims in reference to Draft NPC Land Use Plan



Map 2: Mineral Prospectivity of the Tundra Coppermine Project in reference to Draft NPC Land Use Plans

