

Summary of Community Meetings on the
Draft Nunavut Land Use Plan
REPULSE BAY
February 4-5, 2014



Revised - May 2014

Contents

Introduction	3	Appendix 1: Elected Officials Meeting.....	17
1.1 Context	3	Appendix 2: Questions and Answers	18
1.2 Purpose.....	3	Appendix 3: Community Workshop Scanned Maps.....	19
1.3 Methodology.....	3	Appendix 4: Wrap Up Session.....	34
1.4 Public Awareness	3	Appendix 5: Follow-up Meeting.....	36
1.5 Community Population and Participation.....	3		
 Protecting and Sustaining the Environment.....	4		
2.1 Areas presented to participants.....	4		
2.2 Areas identified by participants	4		
2.3 Areas of importance to Protecting and Sustaining the Environment..	4		
 Encouraging Conservation Planning.....	6		
3.1 Areas presented to participants	6		
3.2 Areas identified by participants	6		
3.3 Areas of importance to Encouraging Conservation Planning	6		
 Building Healthier Communities	8		
4.1 Areas presented to participants.....	8		
4.2 Areas identified by participants.....	8		
4.3 Areas of importance to Building Healthier Communities	8		
 Encouraging Sustainable Economic Development	10		
5.1 Areas presented to participants.....	10		
5.2 Areas identified by participants.....	10		
5.3 Areas of importance to Encouraging Sustainable Economic Development	10		
 Mixed Use.....	12		
6.1 Areas identified in the Draft Plan	12		
6.2 Areas identified by participants.....	12		
 Overlapping Goals	15		
7.1 Areas identified for multiple goals	15		

Chapter 1: Introduction

1.1 Context

The Nunavut Planning Commission (NPC) is preparing a land use plan to guide and direct resource use and development in the Nunavut Settlement Area (NSA). As part of its efforts, the NPC is facilitating discussions in each Nunavut community on land use and resource management issues. Information that is obtained from these discussions will be used to inform decisions regarding the further development of the Nunavut Land Use Plan (NLUP).

1.2 Purpose

This report presents information obtained during the NPC's visit to the community of Repulse Bay. The purpose of the report is to inform decisions regarding the further development of the NLUP, ensuring that the plan reflects the priorities and values of residents.

It is important to note that the information contained in the Community Report will be considered in conjunction with all other feedback when revising the DNLUP.

1.3 Methodology

Information was presented to and received from participants in Repulse Bay in accordance with the Nunavut Planning Commission's Community Engagement Strategy (Engagement Strategy). The Engagement Strategy provides for the following methods for presenting and receiving information;

- **Open house;** information contained in the Draft Nunavut Land Use Plan (DNLUP) was presented on 7 multi lingual large format poster boards. Participants were encouraged to review the posters, ask questions and provide feedback.
- **Elected Officials Meeting;** The NPC Chairperson and NPC staff met with senior and elected officials in the community. The development process for the DNLUP, its content and next steps were presented. Comments and questions were recorded during the session and are contained in Appendix 1.

- **Public Workshop;** A formal presentation of the Draft Plan content was provided to participants, including a slide overview of its content. Following the presentation, questions and comments were received from participants. The questions, comments and responses are contained in Appendix 2.

A mapping session followed the presentation of the Draft Plan. The mapping session involved discussions regarding the topics presented in the DNLUP and encouraged participants to identify additional areas and issues important for inclusion in a NLUP. Information received during this session was recorded by NPC staff and is included in Appendix 3.

- **Wrap Up Session;** Staff was available to discuss the areas identified during the mapping and identify any additional issues or areas of interest. Information received during this session was recorded by NPC staff and is included in Appendix 4.

Areas that participants identified during mapping sessions as important to a particular goal have, in the majority of cases, been included in this report as they were recorded. In instances where participants identified an area that was better suited to another goal, the area has been reclassified to the more suitable goal and has been verified as appropriate to do so by the Community.

A follow-up meeting was held on April 16, 2014 to review a draft version of this report with the Hamlet Council, Hunters and Trappers Organization, and Community Lands and Resource Committee. A summary of this meeting is included in Appendix 5.

1.4 Public Awareness

The NPC raised public awareness regarding its visit to Repulse Bay in accordance with the Engagement Strategy.

The DNLUP and supporting materials were mailed to the Mayor and Council of Repulse Bay, and the Hunters and Trappers Organization (HTO) in September 2012. In addition, letters of invitation were sent to the Repulse Bay Mayor and Council and HTO in advance of the NPC's visit to advise of the

meetings and to encourage participation. Follow up phone calls were also made.

Public notice of the various events was provided in the following ways:

- **Nunatsiaq News and Nunavut News/North;** notice of community meetings were posted in both newspapers a minimum of 45 days in advance.
- **Co-op cable TV;** notice of community meetings was run a minimum of 45 days in advance for one week and run again for no less than 14 days before the meetings.
- **Community radio;** notices were read by the hosts and a live interview with the Commission Chairperson was conducted.
- **Community bulletin boards;** notices were posted on bulletin boards around the community 45 days and again 14 days in advance of the meetings.
- **Community mail drop;** one page flyers that announced the meetings and their purpose were delivered to the post office in each community for all mail boxes that accept unaddressed ad-mail.
- **nunavut.ca;** the schedule of community visits, the Draft Plan, and all supporting information was available on the Commission's website.

1.5 Community Population and Participation

Repulse Bay is a community of approximately 945 people (Statistics Canada. 2011 Census). It is located in the northern Kivalliq Region. (see Figure 1).

The Commission visited the community on February 4-5, 2014. All events occurred as scheduled. The sessions were attended as follows;

- **Elected Officials Meeting;** the Mayor and members of the Hamlet Council and HTO attended the elected officials meeting.
- **Open house;** 1 person attended the open house to review the Draft Plan.
- **Public Workshop;** approximately 40 people attended the presentation of the DNLUP and facilitated mapping sessions. Information was recorded in three separate mapping groups.
- **Wrap Up Session;** approximately 15 people attended the wrap up session.

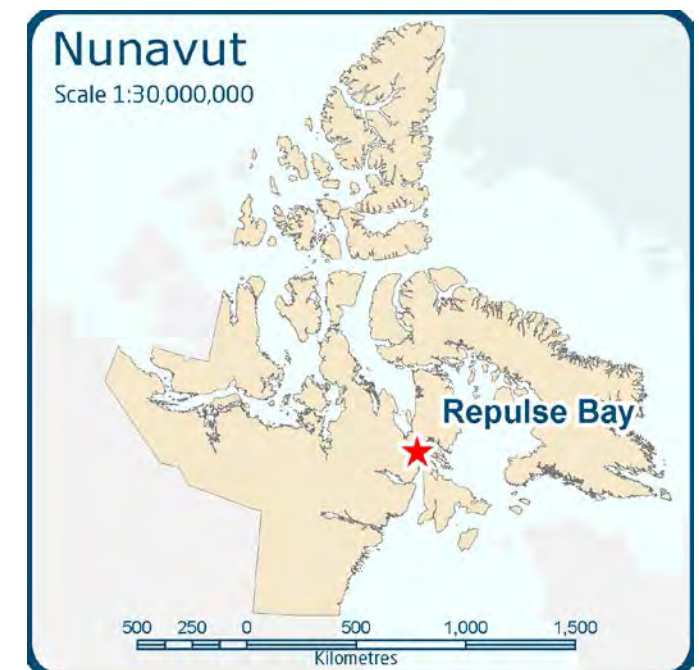


Figure 1. Location of Repulse Bay

Chapter 2: Protecting and Sustaining the Environment

Protecting and Sustaining the Environment was one of five topics presented to and discussed by participants during the Open House, Elected Officials Meeting, Public Workshop and Wrap up Session, collectively referred to in this document as information sharing and gathering sessions.

2.1 Areas presented to participants

During the information sharing and gathering sessions, participants were presented the following areas and issues as important to Protecting and Sustaining the Environment.

- Key bird habitat sites
- Caribou Habitat sites
- Atlantic Cod Lakes
- Cumulative Impacts
- Transboundary considerations
- Climate change

The importance of these issues and areas to Protecting and Sustaining the Environment was not disputed by participants during the information sharing and gathering sessions.

2.2 Areas identified by participants

Additional areas and issues were identified by participants as important to Protecting and Sustaining the Environment during the information sharing and gathering sessions. These additional areas are;

- Marine mammal habitat
- Fishing areas
- Caribou habitat
- Burial sites
- Polar bear habitat

2.3 Areas of importance to Protecting and Sustaining the Environment

Areas and issues discussed during the information sharing and gathering sessions as important to Protecting and Sustaining the Environment are illustrated on Map 1, including areas identified in the DNLUP and areas identified by the community. Scanned images of the maps on which community feedback was recorded can be found in Appendix 4.

Based on discussions with participants, the NPC understands that:

- The areas identified on Map 1 are considered by the Community to be important to Protecting and Sustaining the Environment.
- In these areas, the community would like the NLUP to encourage activities that support environmental protection and management needs, including wildlife conservation, protection and management.

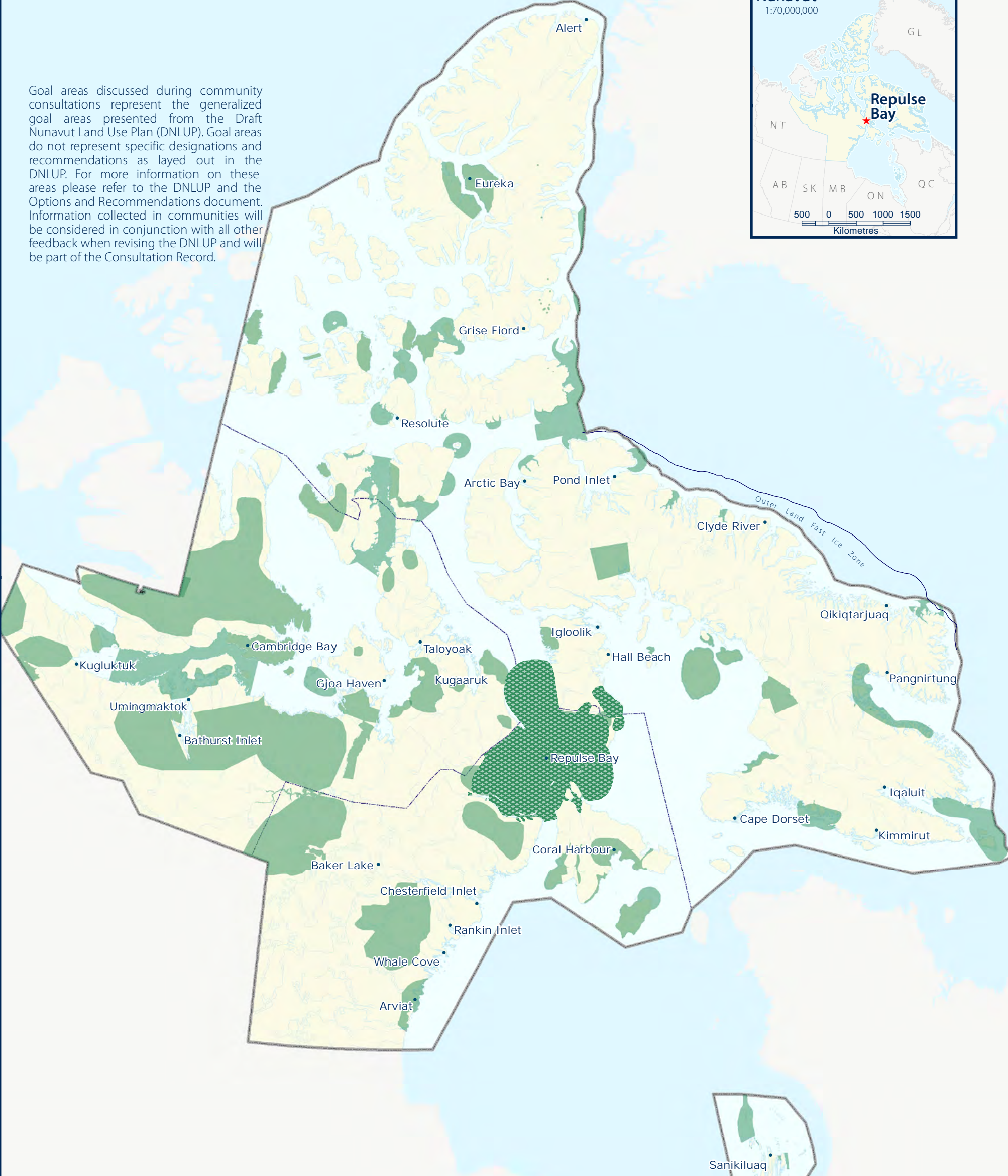
This feedback will be considered in conjunction with all other feedback when revising the DNLUP.



 PSE Goal areas from the DNLUP discussed during community consultations

 Additional PSE Goal areas identified during community consultations

Goal areas discussed during community consultations represent the generalized goal areas presented from the Draft Nunavut Land Use Plan (DNLUP). Goal areas do not represent specific designations and recommendations as layed out in the DNLUP. For more information on these areas please refer to the DNLUP and the Options and Recommendations document. Information collected in communities will be considered in conjunction with all other feedback when revising the DNLUP and will be part of the Consultation Record.



For Data Sources see Draft Nunavut Land Use Plan (DNLUP). Areas identified by community collected as part of the Nunavut Planning Commissions Community Engagement Strategy during the Mapping Sessions for the DNLUP on February 4 & 5, 2014. Maps were digitized at the Nunavut Planning Commission. To be used for illustration purposes only as part of the Draft Nunavut Land Use Plan Consultation Process.



ᑎᓄᓐᓂᓐ ᐸᓄᓐᓂᓐ
Nunavunmi Parnaiyiit
Nunavut Planning Commission
Commission d'Aménagement du Nunavut



Projection: Canada Lambert Conformal Conic, NAD83
Produced by the Nunavut Planning Commission: (867)983-4625, npc@nunavut.ca
May-28-14

Chapter 3: Encouraging Conservation Planning

Encouraging Conservation Planning was one of five topics presented to and discussed by the participants during the information sharing and gathering sessions.

3.1 Areas presented to participants

During the information sharing and gathering sessions, participants were presented the following areas and issues as important to Encouraging Conservation Planning;

- National Parks Awaiting Full Establishment
- Proposed National Parks
- National Marine Conservation Areas
- Thelon Wildlife Sanctuary
- Migratory Bird Sanctuaries
- National Wildlife Areas
- National Historic Sites
- Territorial Historic Sites
- Heritage Rivers

The importance of these issues and areas to Encouraging Conservation Planning was not disputed by participants during the information sharing and gathering sessions.

3.2 Areas identified by participants

Additional areas and issues were identified by participants as important to Encouraging Conservation Planning during the information sharing and gathering sessions. These additional areas are.

- Historic sites

3.3 Areas of importance to Encouraging Conservation Planning

Areas and issues discussed during the information sharing and gathering sessions as important to Encouraging Conservation Planning are illustrated on Map 2, including areas identified in the DNLUP and areas identified by the community. Scanned images of the maps on which community feedback was recorded can be found in Appendix 4.

Based on discussions with participants, the NPC understands that:

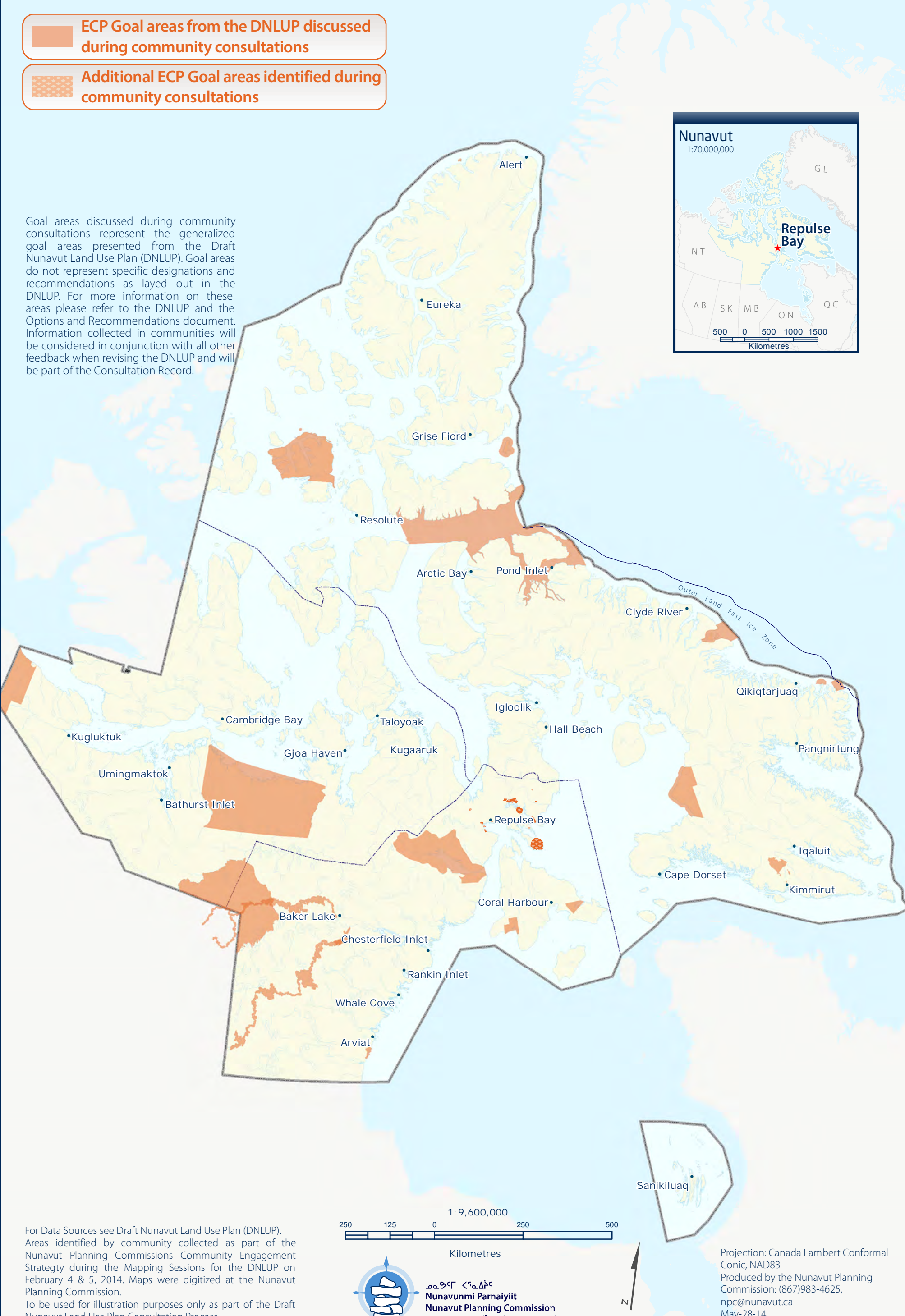
- The areas identified on Map 2 are considered by the Community to be important to Encouraging Conservation Planning.
- In these areas, the community would like the NLUP to encourage activities that support environmental protection and management needs, including wildlife conservation, protection and management.

This feedback will be considered in conjunction with all other feedback when revising the DNLUP.



-  ECP Goal areas from the DNLUP discussed during community consultations
-  Additional ECP Goal areas identified during community consultations

Goal areas discussed during community consultations represent the generalized goal areas presented from the Draft Nunavut Land Use Plan (DNLUP). Goal areas do not represent specific designations and recommendations as layed out in the DNLUP. For more information on these areas please refer to the DNLUP and the Options and Recommendations document. Information collected in communities will be considered in conjunction with all other feedback when revising the DNLUP and will be part of the Consultation Record.



For Data Sources see Draft Nunavut Land Use Plan (DNLUP). Areas identified by community collected as part of the Nunavut Planning Commissions Community Engagement Strategy during the Mapping Sessions for the DNLUP on February 4 & 5, 2014. Maps were digitized at the Nunavut Planning Commission. To be used for illustration purposes only as part of the Draft Nunavut Land Use Plan Consultation Process.



ᓄᓇᓂᓄᓐ ᐸᓐᓇᓂᓄᓐ
Nunavunmi Parnaiyiit
Nunavut Planning Commission
Commission d'Aménagement du Nunavut

Chapter 4: Building Healthier Communities

Building Healthier Communities was one of five topics presented to and discussed by the participants during the information sharing and gathering sessions.

4.1 Areas presented to participants

During the information sharing and gathering sessions, participants were presented the following areas and issues as important to Building Healthier Communities;

- Areas of Community Interest
- Community Land Use
- Transportation Infrastructure
- Unincorporated Communities
- Alternative Energy Sources
- Community drinking water supplies
- Land remediation
- Northern Contaminated Sites Program
- Aerodromes
- Canadian Forces Station
- Northern Warning System sites

The importance of these issues and areas to Building Healthier Communities was not disputed by participants.

4.2 Areas identified by participants

Additional areas and issues were identified by participants as important to contributing to the goal of Building Healthier Communities during the information sharing and gathering sessions. These additional areas are;

- Hunting and camping areas

- Historic sites
- Drinking water
- Contaminated sites

4.3 Areas of importance to Building Healthier Communities

Areas and issues discussed during the information sharing and gathering sessions as important to Building Healthier Communities are illustrated on Map 3, including areas identified in the DNLUP and areas identified by the community. Scanned images of the maps on which community feedback was recorded can be found in Appendix 4.

Based on discussions with participants, the NPC understands that:

- The areas identified on Map 3 are considered by the Community to be important to Building Healthier Communities.
- In these areas, the community would like the NLUP to encourage activities that support community needs and cultural priorities.

This feedback will be considered in conjunction with all other feedback when revising the DNLUP.



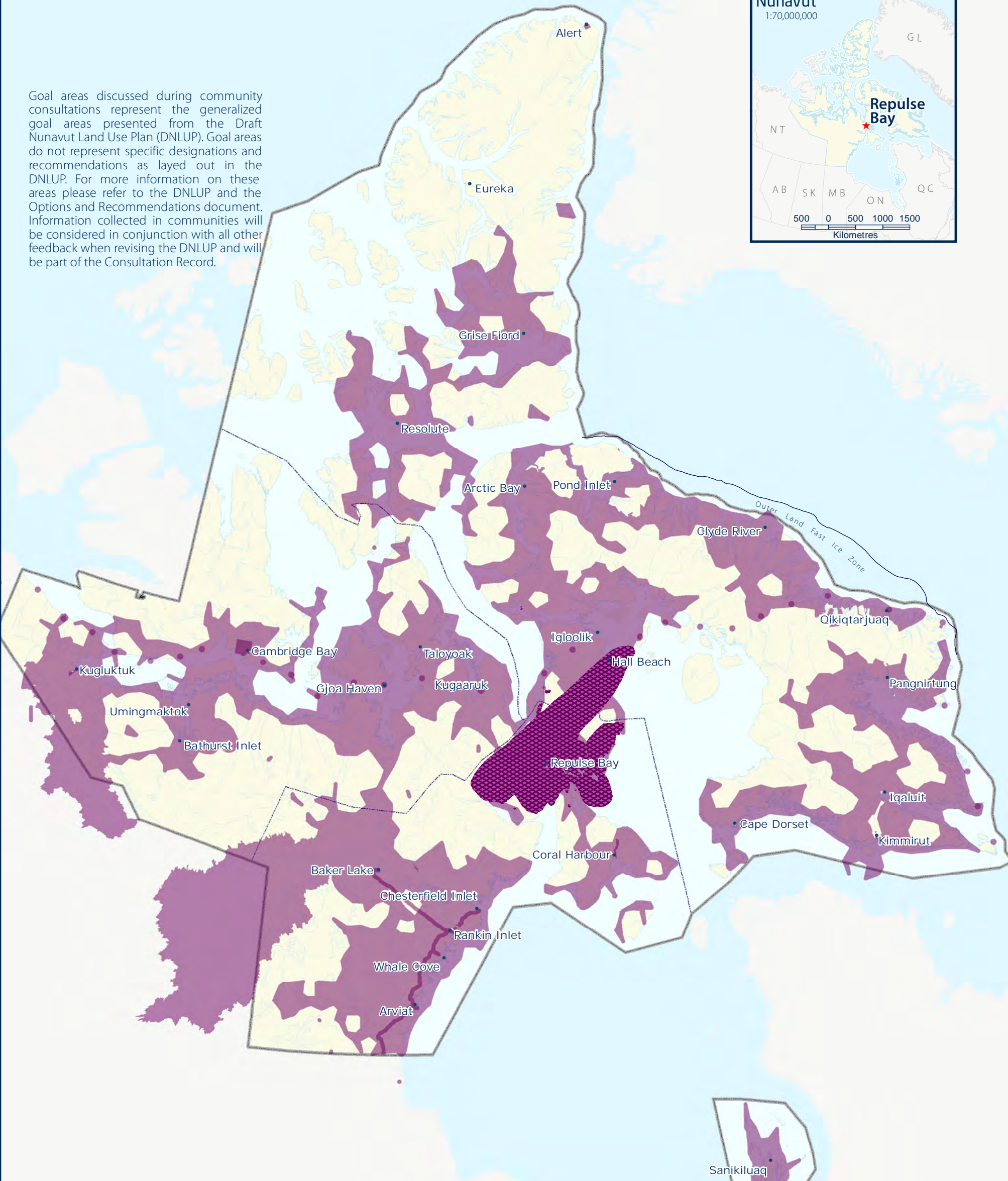


BHC Goal areas from the DNLUP discussed during community consultations



Additional BHC Goal areas identified during community consultations

Goal areas discussed during community consultations represent the generalized goal areas presented from the Draft Nunavut Land Use Plan (DNLUP). Goal areas do not represent specific designations and recommendations as layed out in the DNLUP. For more information on these areas please refer to the DNLUP and the Options and Recommendations document. Information collected in communities will be considered in conjunction with all other feedback when revising the DNLUP and will be part of the Consultation Record.



For Data Sources see Draft Nunavut Land Use Plan (DNLUP). Areas identified by community collected as part of the Nunavut Planning Commissions Community Engagement Strategy during the Mapping Sessions for the DNLUP on February 4 & 5, 2014. Maps were digitized at the Nunavut Planning Commission. To be used for illustration purposes only as part of the Draft Nunavut Land Use Plan Consultation Process.



Nunavunmi Parnaiyiit
Nunavut Planning Commission
Commission d'Aménagement du Nunavut



Projection: Canada Lambert Conformal
Conic, NAD83
Produced by the Nunavut Planning
Commission: (867)983-4625,
npc@nunavut.ca
May-28-14

Chapter 5: Encouraging Sustainable Economic Development

Encouraging Sustainable Economic Development was one of five topics presented to and discussed by the participants during the information sharing and gathering sessions.

5.1 Areas presented to participants

During the information sharing and gathering sessions, participants were presented with the following areas important to Encouraging Sustainable Economic Development;

- Mineral Exploration and Production
- Oil and Gas Exploration
- Commercial Fisheries

The importance of these issues and areas to Encouraging Sustainable Economic Development was not disputed by participants during the information sharing and gathering sessions.

5.2 Areas identified by participants

Additional areas and issues were identified by participants as important to Encouraging Sustainable Economic Development during the information sharing and gathering sessions. The additional areas identified are;

- Commercial fishing
- Soapstone areas
- Sports hunting areas
- Tourism potential

5.3 Areas of importance to Encouraging Sustainable Economic Development

Areas and issues discussed during the information sharing and gathering sessions as important to Encouraging Sustainable

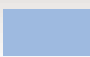

Economic Development are illustrated on Map 4, including areas identified in the DNLUP and areas identified by the community. Scanned images of the maps on which community feedback was recorded can be found in Appendix 4.

Based on discussions with participants, the NPC understands that:

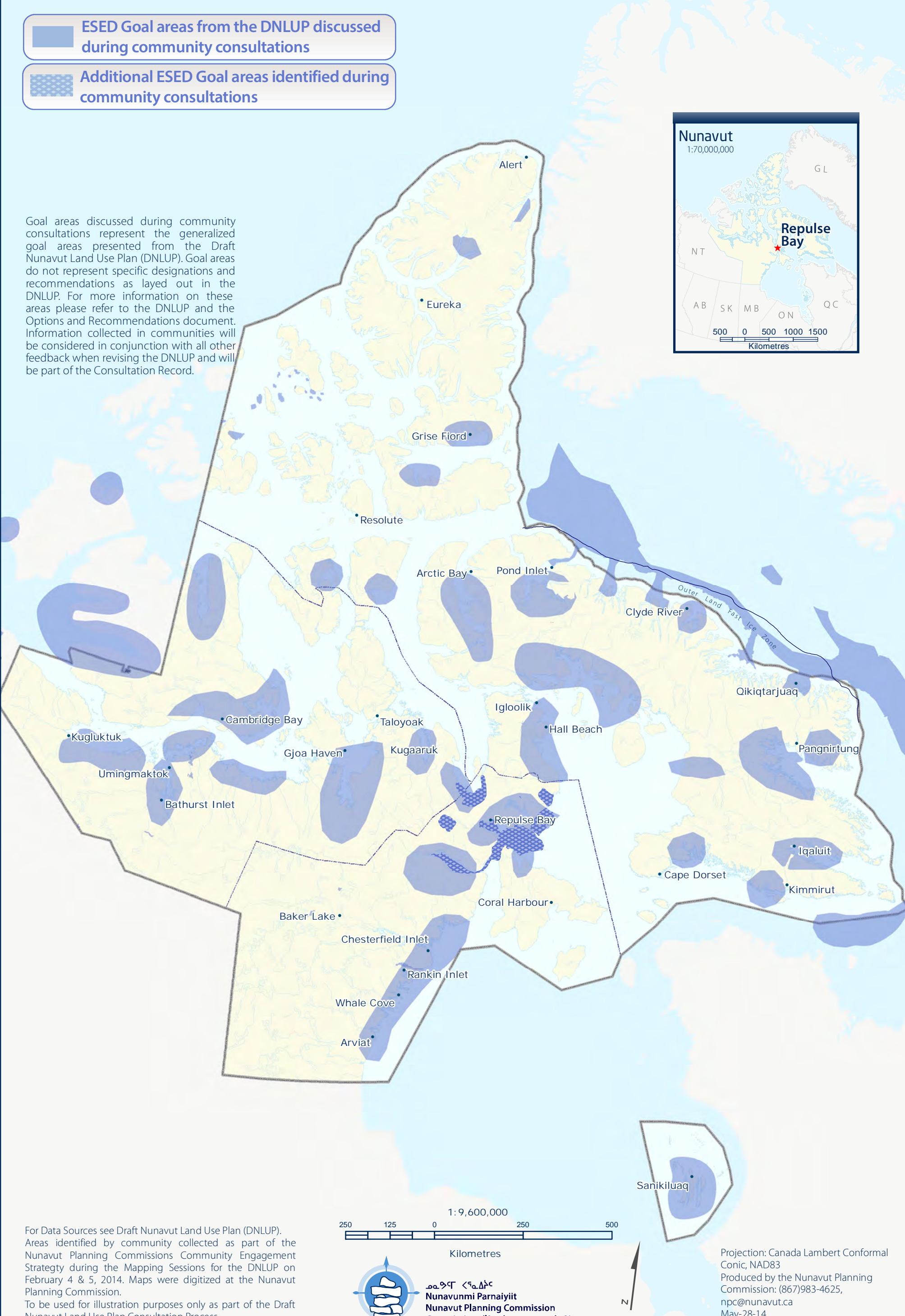
- The areas identified on Map 4 are considered by the Community to be important to Encouraging Sustainable Economic Development.
- In these areas, the community would like the NLUP to encourage activities that support economic opportunities and needs.

This feedback will be considered in conjunction with all other feedback when revising the DNLUP.



-  ESED Goal areas from the DNLUP discussed during community consultations
-  Additional ESED Goal areas identified during community consultations

Goal areas discussed during community consultations represent the generalized goal areas presented from the Draft Nunavut Land Use Plan (DNLUP). Goal areas do not represent specific designations and recommendations as layed out in the DNLUP. For more information on these areas please refer to the DNLUP and the Options and Recommendations document. Information collected in communities will be considered in conjunction with all other feedback when revising the DNLUP and will be part of the Consultation Record.



6.1 Areas identified in the Draft Plan

The DNLUP identifies areas important for a variety of uses. These areas were presented to participants during the workshop as Mixed Use Areas. These areas, as they occur around the community, are illustrated on Map 5.

6.2 Areas identified by participants

No additional areas were identified as Mixed Use by participants. However, some areas identified as Mixed Use in the DNLUP were considered by participants to require additional protection because of their particular qualities. These areas and the goals they are important for are identified on Map 6.

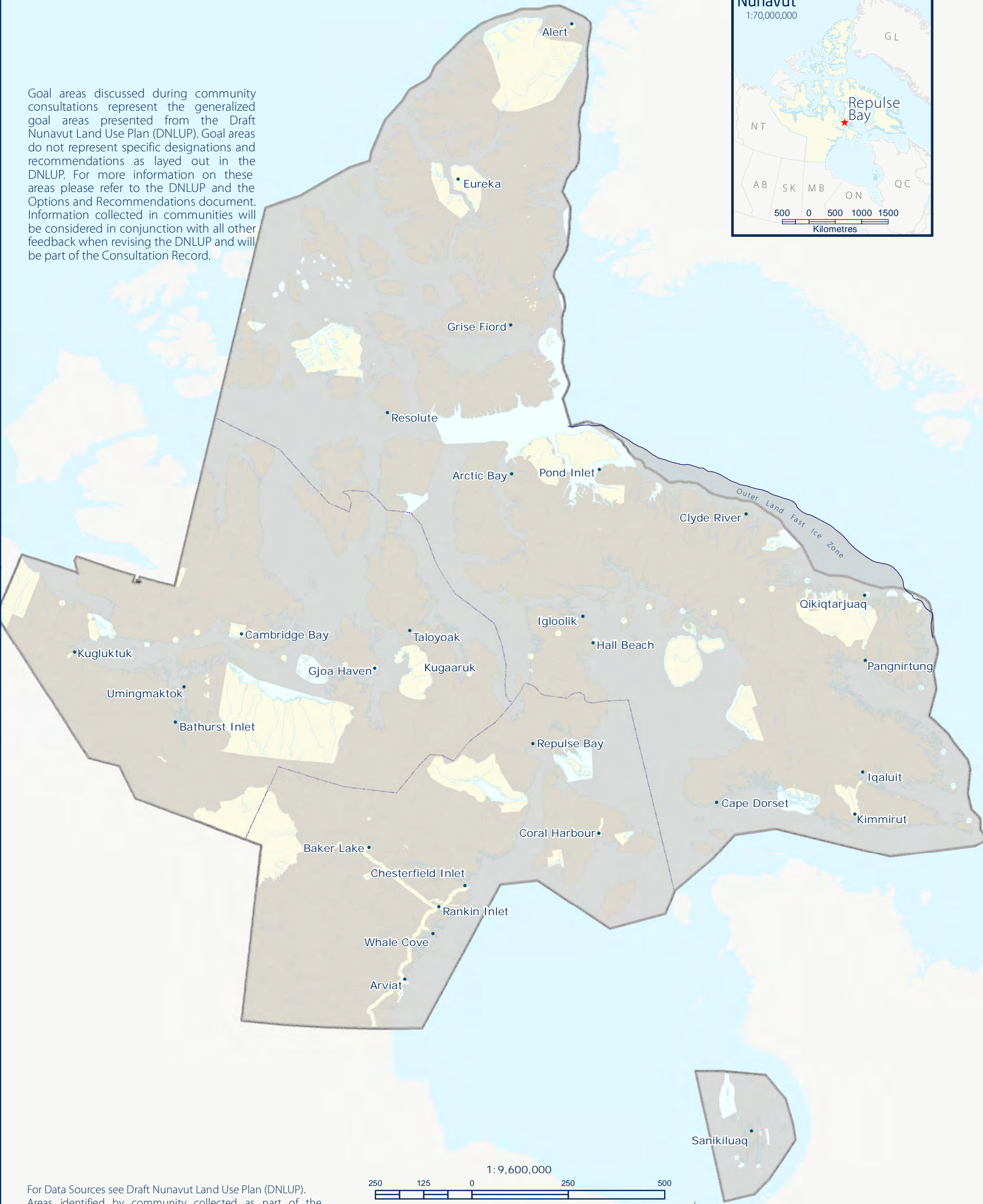


MIXED USE (MU) • REPULSE BAY • MAP 5



MU Goal areas from DNLUP discussed during community consultations

Goal areas discussed during community consultations represent the generalized goal areas presented from the Draft Nunavut Land Use Plan (DNLUP). Goal areas do not represent specific designations and recommendations as layed out in the DNLUP. For more information on these areas please refer to the DNLUP and the Options and Recommendations document. Information collected in communities will be considered in conjunction with all other feedback when revising the DNLUP and will be part of the Consultation Record.



For Data Sources see Draft Nunavut Land Use Plan (DNLUP). Areas identified by community collected as part of the Nunavut Planning Commissions Community Engagement Strategy during the Mapping Sessions for the DNLUP on February 4 & 5, 2014. Maps were digitized at the Nunavut Planning Commission. To be used for illustration purposes only as part of the Draft Nunavut Land Use Plan Consultation Process.



ᑎᓄᓐᓂᓐ ᐸᓄᓐᓂᓐ
Nunavunmi Parnaiyiit
Nunavut Planning Commission
Commission d'Aménagement du Nunavut

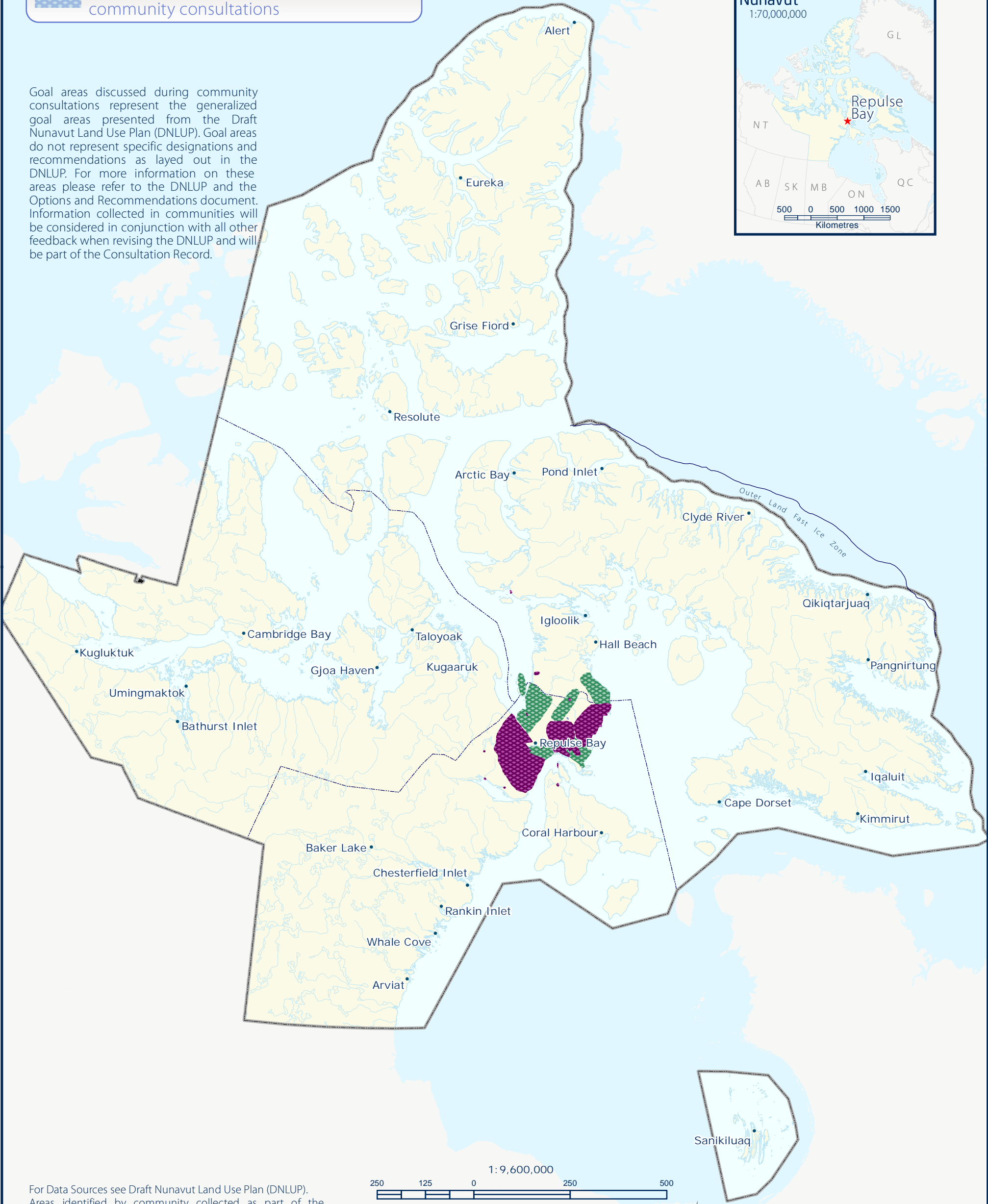


Projection: Canada Lambert Conformal Conic, NAD83
Produced by the Nunavut Planning Commission: (867)983-4625, npc@nunavut.ca
Wednesday, April 02, 2014

MIXED USE (MU) • REPULSE BAY • MAP 6

- Additional PSE Goal areas identified during community consultations
- Additional BHC Goal areas identified during community consultations
- Additional ESED Goal areas identified during community consultations

Goal areas discussed during community consultations represent the generalized goal areas presented from the Draft Nunavut Land Use Plan (DNLUP). Goal areas do not represent specific designations and recommendations as layed out in the DNLUP. For more information on these areas please refer to the DNLUP and the Options and Recommendations document. Information collected in communities will be considered in conjunction with all other feedback when revising the DNLUP and will be part of the Consultation Record.



For Data Sources see Draft Nunavut Land Use Plan (DNLUP). Areas identified by community collected as part of the Nunavut Planning Commissions Community Engagement Strategy during the Mapping Sessions for the DNLUP on February 4 & 5, 2014. Maps were digitized at the Nunavut Planning Commission. To be used for illustration purposes only as part of the Draft Nunavut Land Use Plan Consultation Process.



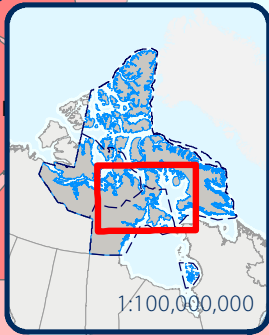
Projection: Canada Lambert Conformal Conic, NAD83
Produced by the Nunavut Planning Commission: (867)983-4625, npc@nunavut.ca
Wednesday, April 02, 2014

7.1 Areas identified for multiple goals

All areas discussed with the community as important for a particular goal are shown on Map 7. In some instances, areas have been identified as important for multiple goals. These areas, and the specific goals they are important to, are also shown on Map 7. In these areas, the NPC will take all of the identified goals and all other feedback into consideration when revising the DNLUP.



Repulse Bay • Map 7 Overlapping Goal Areas



1 Goal Identified in area

2 Goals Identified in area

3 Goals Identified in area

4 Goals Identified in area

Established Parks
(Land Use Plan does not apply)

Administrative Boundary

1:3,000,000

050100

Kilometres

Projection: Lambert Conformal Conic, NAD83
Areas identified by community collected as part of the Nunavut Planning Commissions Community Engagement Strategy during the Mapping Sessions for the DNLUP on February 4 & 5, 2014. Maps were digitized at the Nunavut Planning Commission.

To be used for illustration purposes only as part of the draft Nunavut Land Use Plan consultation process. Produced by the Nunavut Planning Commission (NPC), 03/04/2014.

Label	Goals in Area
A	PSE
B	ECP
C	BHC
D	ESED
E	PSE, ECP
F	BHC, ECP
G	BHC, PSE
H	ESED, ECP
I	ESED, PSE
K	BHC, ESED
L	BHC, PSE, ECP
M	BHC, ESED, ECP
N	BHC, ESED, PSE
O	ESED, PSE, ECP
P	All Goals (BHC, ESED, PSE, ECP)

Appendix 1: Elected Officials Meeting

The elected officials meeting was attended by the Mayor and members of the Hamlet Council and HTO. During the meeting, participants raised the following issues:

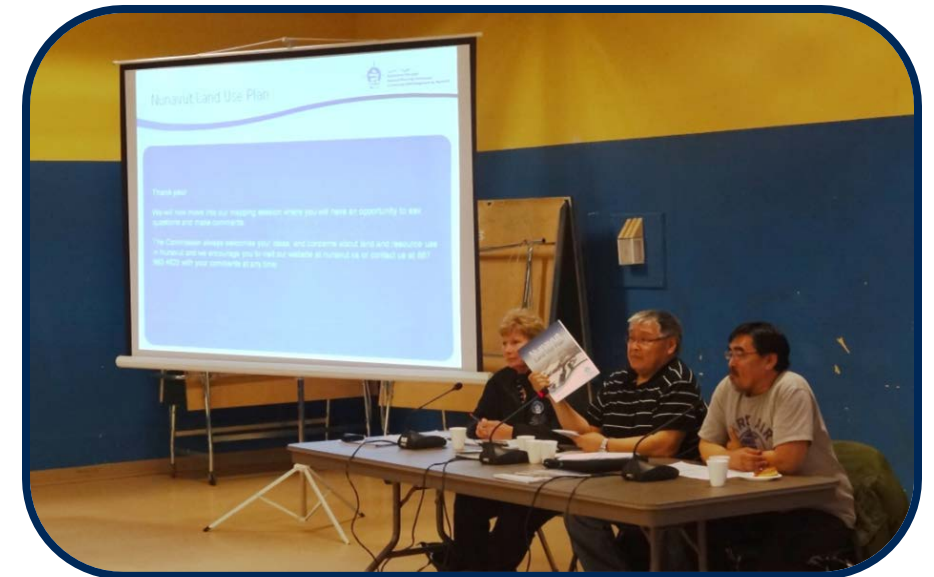
- What is the timeline for revising the plan?
 - The Commission explained the next steps leading to the submission of the plan and the concept of periodic reviews to keep the plan current.
- Who is responsible for mineral exploration? What is the royalty scheme?
 - The Commission explained that royalties are handled by the Crown or NTL.
- Many areas that we value were marked during the land claims process, but they never materialized during the negotiations. Now we know there are mining operations and claims placed in these areas. Many explorations in these areas. Are we going to mark hunting areas? Commercial fishing? We think we should mark the maps, first and foremost important for / to Inuit (subsistence).
- A discussion regarding royalties took place, and how that is beyond the Commission's mandate.



Appendix 2: Questions and Answers

During the community workshop, there was a question and answer period, which included a discussion of the following topics:

- This will need correction from time to time. Will corrections be ongoing?
 - The Commission answered that the Draft LUP will be submitted for approval in 2015. Once approved, it will be reviewed every 5 years, but updates can happen at any time to include new information. It is not a final document; it is a living document.
- We favour hunting grounds, burial sites, and traditional lands. When they find minerals in a land we want to set aside, what can we do? For example, Ukkusiksalik National Park was established without our information. Skidoos, outboards can't go into Wager Bay now, only dog teams or kayaks! What can we do?
 - The Commission answered that we're here to listen to your information, which staff compile and present to the Commission for decisions. Then the Commission will submit the plan for approval to the Ministers and NTI. Then people will have to follow the plan.
- If the community wanted to start economic development near the hamlet on Crown Land, how can transboundary issues be dealt with?
 - The Commission answered that the land use plan could manage these lands to support economic development opportunities. The hamlet could also consider expanding its boundaries.



Appendix 3: Community Workshop Scanned Maps

Two groups completed the mapping session to identify important areas. This Appendix contains the maps that were used by participants to identify areas that are important to the following land use planning goals:

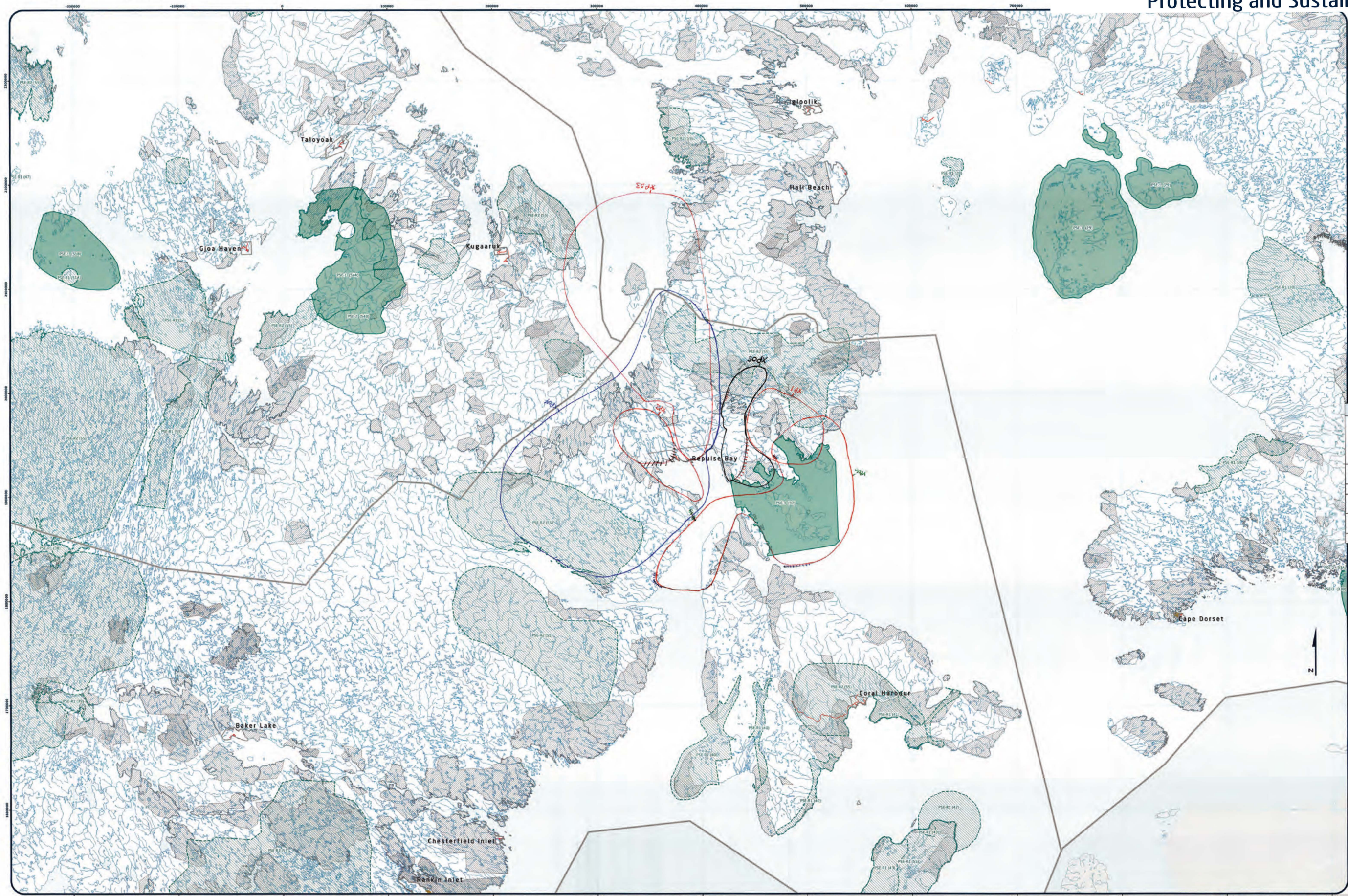
- Protecting and Sustaining the Environment
- Encouraging Conservation Planning
- Building Healthier Communities
- Encouraging Sustainable Economic Development
- Mixed Use

Also included on each map is a reference table that includes the specific values that were identified for the area.

Note: The documented comments for Group 3 were not verified with an audio recording.

During the mapping portion of the community workshop, the following concerns were raised that did not apply to a specific area that was identified on the maps:

- All lakes are important for drinking water
- Support commercial fishing
- Group 1: Would like to see PSE areas protected for wildlife.
- Group 2: Concerned about activities harming wildlife in areas marked on PSE map.
- All of Repulse Bay is important



Designation	Permitted Uses	Prohibited Uses
PSE 1 (A)	Tourism, Recreation, Research	All Other Uses
PSE 1 (B)	Tourism, Recreation, Research	All Other Uses
PSE 1 (C)	Tourism, Recreation, Research	All Other Uses
PSE 1 (D)	Tourism, Recreation, Research	All Other Uses
PSE 1 (E)	Tourism, Recreation, Research	All Other Uses
PSE 1 (F)	Tourism, Recreation, Research	All Other Uses
PSE 1 (G)	Tourism, Recreation, Research	All Other Uses
PSE 1 (H)	Tourism, Recreation, Research	All Other Uses
PSE 1 (I)	Tourism, Recreation, Research	All Other Uses
PSE 1 (J)	Tourism, Recreation, Research	All Other Uses
PSE 1 (K)	Tourism, Recreation, Research	All Other Uses
PSE 1 (L)	Tourism, Recreation, Research	All Other Uses
PSE 1 (M)	Tourism, Recreation, Research	All Other Uses
PSE 1 (N)	Tourism, Recreation, Research	All Other Uses
PSE 1 (O)	Tourism, Recreation, Research	All Other Uses
PSE 1 (P)	Tourism, Recreation, Research	All Other Uses
PSE 1 (Q)	Tourism, Recreation, Research	All Other Uses
PSE 1 (R)	Tourism, Recreation, Research	All Other Uses
PSE 1 (S)	Tourism, Recreation, Research	All Other Uses
PSE 1 (T)	Tourism, Recreation, Research	All Other Uses
PSE 1 (U)	Tourism, Recreation, Research	All Other Uses
PSE 1 (V)	Tourism, Recreation, Research	All Other Uses
PSE 1 (W)	Tourism, Recreation, Research	All Other Uses
PSE 1 (X)	Tourism, Recreation, Research	All Other Uses
PSE 1 (Y)	Tourism, Recreation, Research	All Other Uses
PSE 1 (Z)	Tourism, Recreation, Research	All Other Uses

Code	Comments
XP01	Important wildlife habitat for walrus, seal, narwhal, beluga, bowhead. Also important fishing area for char and lake trout. Contains important burial sites. Want to see area protected.
XP02	Important fishing area, as well as caribou habitat.
XP03	Polar bear hunting
XP04	Wolves, wolverines, char, lake trout, caribou & polar bear.
XP05	Char, caribou, wolverine, lake trout, some birds, narwhale hunting area.
XP06	Narwhale, beluga, and bowhead.

Community: Repulse Bay
Location: Repulse Bay
Date: 1/14/2024
Community Plan Map # 1/14/2024

Signatures of the Community signify its permission to conduct mapping session as per the map.

Signature of Mapper: [Signature]

CONFIDENTIAL

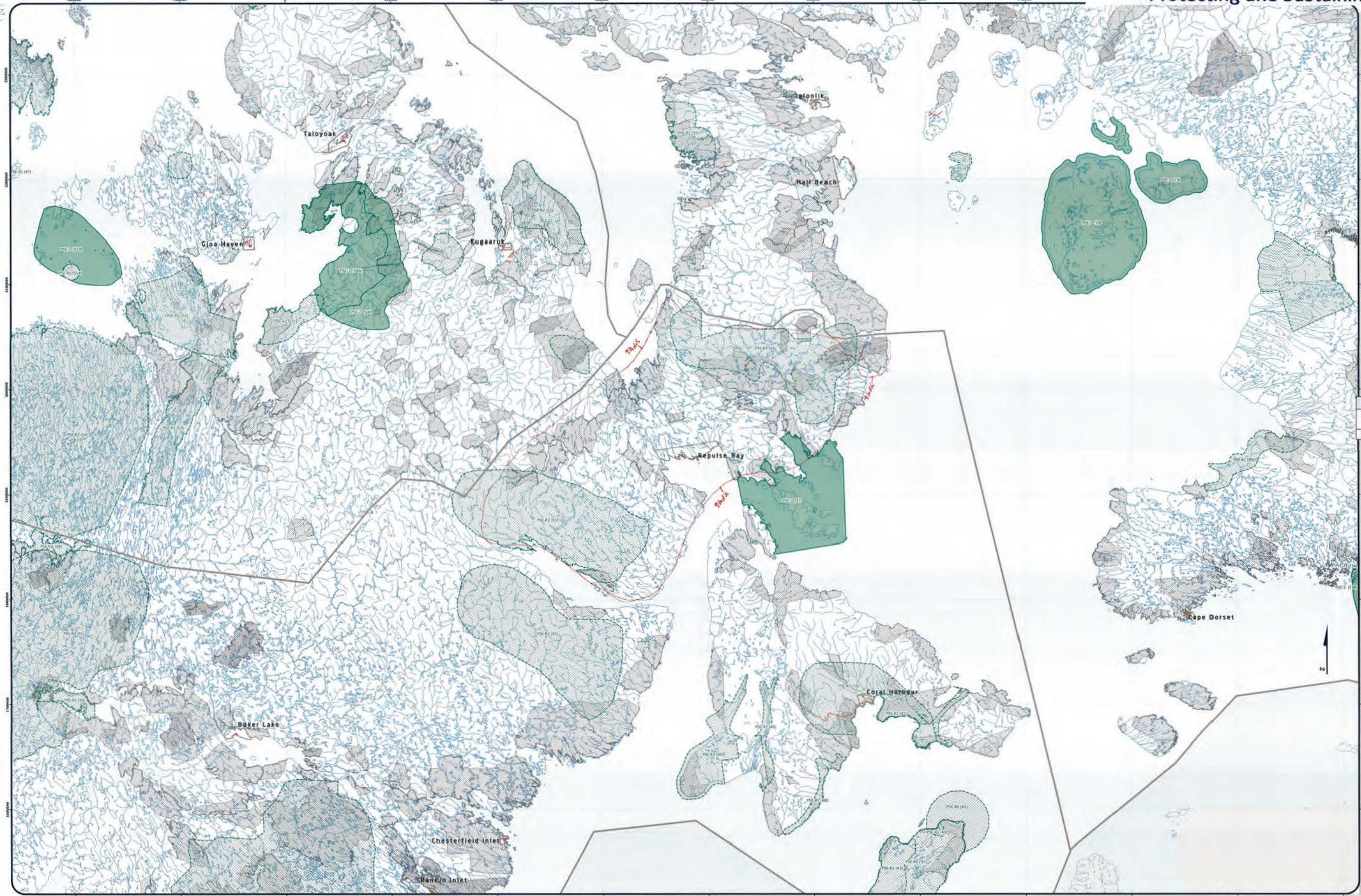
Natural Planning Commission

1. 16
2. 17
3. 18
4. 19
5. 20
6. 21
7. 22
8. 23
9. 24
10. 25
11. 26
12. 27
13. 28
14. 29
15. 30



Designations	Permitted Uses	Prohibited Uses
1. National Park	Recreation, Research, Education	All other uses
2. Provincial Park	Recreation, Research, Education	All other uses
3. Wildlife Management Area	Recreation, Research, Education	All other uses
4. Wildlife Sanctuary	Recreation, Research, Education	All other uses
5. Wildlife Habitat	Recreation, Research, Education	All other uses
6. Wildlife Refuge	Recreation, Research, Education	All other uses
7. Wildlife Sanctuary	Recreation, Research, Education	All other uses
8. Wildlife Sanctuary	Recreation, Research, Education	All other uses
9. Wildlife Sanctuary	Recreation, Research, Education	All other uses
10. Wildlife Sanctuary	Recreation, Research, Education	All other uses

Code	Comments
XP1	My grandfather is buried here
XP2	Graves of white man on this point
XP3	Grave
XP4	Grave
XP5	Graves of great grandparents on this cove
XP6	Father's grave on this site, grave of Susanaq
XP7	Kopak's grave on this site, there are 5 graves altogether on this small cove
XP8	Graves on this island, my father's younger brother
XP9	Small island has graves of people who when through starvation period and on this point
XP10	Duke of York Bay has lot of graves too, people from this area
XP12	Beluga whales are in this area, some of the areas are calving grounds. There are lot of whale bones in this area from past hunts to today. We used to move here during spring to get ready for whale hunts in summer.
XP13	I have harvested whales in all of the areas, it is a trapping area during freeze up and whales get caught and have small holes during freeze-up.
XP14	This is an area good for harvesting narwhales
XP15	Important for beluga during summer months
XP16	Char area
XP17	Fishing lake
XP18	Char area
XP19	Char area
XP20	Char fishing
XP22	Char and lake trout fishing
XP23	Char fishing
XP24	Char fishing
XP26	Char fishing
XP33	Char fishing
XP35	Char fishing
XP44	Char fishing



Designations	Permitted Uses	Prohibited Uses
1. Protected Areas	1. Tourism, Recreation, Research	1. All Other Uses
2. Natural Resources	2. Tourism, Recreation, Research	
3. Natural Resources	3. Tourism, Recreation, Research	
4. Natural Resources	4. Tourism, Recreation, Research	
5. Natural Resources	5. Tourism, Recreation, Research	
6. Natural Resources	6. Tourism, Recreation, Research	
7. Natural Resources	7. Tourism, Recreation, Research	
8. Natural Resources	8. Tourism, Recreation, Research	
9. Natural Resources	9. Tourism, Recreation, Research	
10. Natural Resources	10. Tourism, Recreation, Research	
11. Natural Resources	11. Tourism, Recreation, Research	
12. Natural Resources	12. Tourism, Recreation, Research	
13. Natural Resources	13. Tourism, Recreation, Research	
14. Natural Resources	14. Tourism, Recreation, Research	
15. Natural Resources	15. Tourism, Recreation, Research	
16. Natural Resources	16. Tourism, Recreation, Research	
17. Natural Resources	17. Tourism, Recreation, Research	
18. Natural Resources	18. Tourism, Recreation, Research	
19. Natural Resources	19. Tourism, Recreation, Research	
20. Natural Resources	20. Tourism, Recreation, Research	
21. Natural Resources	21. Tourism, Recreation, Research	
22. Natural Resources	22. Tourism, Recreation, Research	
23. Natural Resources	23. Tourism, Recreation, Research	
24. Natural Resources	24. Tourism, Recreation, Research	
25. Natural Resources	25. Tourism, Recreation, Research	
26. Natural Resources	26. Tourism, Recreation, Research	
27. Natural Resources	27. Tourism, Recreation, Research	
28. Natural Resources	28. Tourism, Recreation, Research	
29. Natural Resources	29. Tourism, Recreation, Research	
30. Natural Resources	30. Tourism, Recreation, Research	

Code	Comments
XP46	Important caribou area. Calving occurs anywhere in this area.
XP47	Caribou area

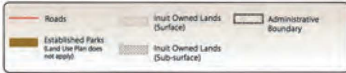
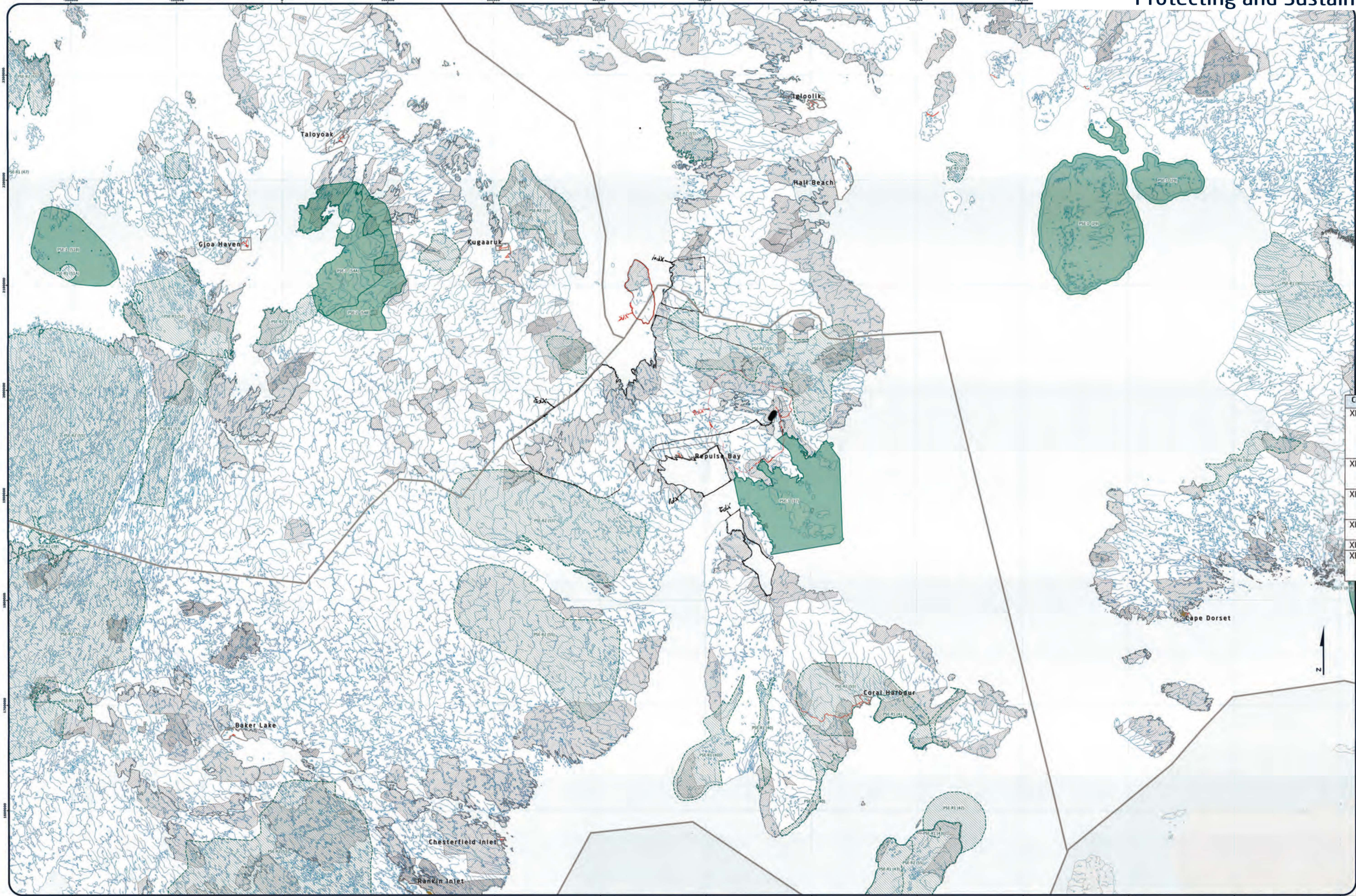
1.	16.
2.	17.
3.	18.
4.	19.
5.	20.
6.	21.
7.	22.
8.	23.
9.	24.
10.	25.
11.	26.
12.	27.
13.	28.
14.	29.
15.	30.



Repulse Bay - Group 3 Results
Protecting and Sustaining the Environment

PROTECTING AND SUSTAINING THE ENVIRONMENT (PSE)

Scale 1:1,000,000



Designations	Permitted Uses	Prohibited Uses
PSE (G1)	Tourism, Recreation, Research	All Other Uses
PSE (G2)	Tourism, Recreation, Research	All Other Uses
PSE (G3)	Tourism, Recreation, Research, Marine Infrastructure, Marine Communications and Electronic Cable	All Other Uses

Reference Table for Recommendations	
PSE (G1)	Project Proposals located in a Key Bird Habitat Site should take into account impacts on the migratory birds that rely on the area.
PSE (G2)	Project Proposals located in historic caribou calving grounds should take into account impacts on caribou calving, post-calving areas and migration routes.
PSE (G3)	Project Proposals located in and/or near known caribou sea ice crossing areas should take into account impacts that may impact the ability of caribou to cross the ice.
PSE (G4)	Project Proposals located in portions of the Great Bear Lake watershed in Nunavut should take into account transboundary impacts that may reduce the conservation value of the watershed.

Code	Comments
XP01	Along shoreline in summer, good fishing spot along shore, in future could be protected against commercial fishing. Needs to be protected because it is a Narwhal calving area
XP02	Along shoreline in winter, good fishing spot along shore, in future could be protected against commercial fishing
XP03	Areas for fishing in the winter, need this area protected from oil and gas, mining, due to being good spot, good drinking water
XP04	Where dewline site used to be, it is good fishing in winter
XP05	Polar Bear cubs, birthing on whole island
XP06	Areas for fishing in the winter, need this area protected from oil and gas, mining, due to being good spot, good drinking water

Community: Repulse Bay
Region: Kitiituk
Date: 2014/01/14
Community Title: Mayor
Map # 1

Signatures of the Community signify as permission to conduct mapping activities as follows:

1. _____	16. _____
2. _____	17. _____
3. _____	18. _____
4. _____	19. _____
5. _____	20. _____
6. _____	21. _____
7. _____	22. _____
8. _____	23. _____
9. _____	24. _____
10. _____	25. _____
11. _____	26. _____
12. _____	27. _____
13. _____	28. _____
14. _____	29. _____
15. _____	30. _____

Signature of Mapper: _____

COMMUNITY CHAIRMAN

Coordinate System: EPSG 42304 LCC
Projection: Lambert Conformal Conic
Datum: North American 1983
False Easting: 0.0000
False Northing: 0.0000
Central Meridian: -95.0000
Standard Parallel 1: 49.0000
Standard Parallel 2: 77.0000
Latitude Of Origin: 49.0000
Units: Meter

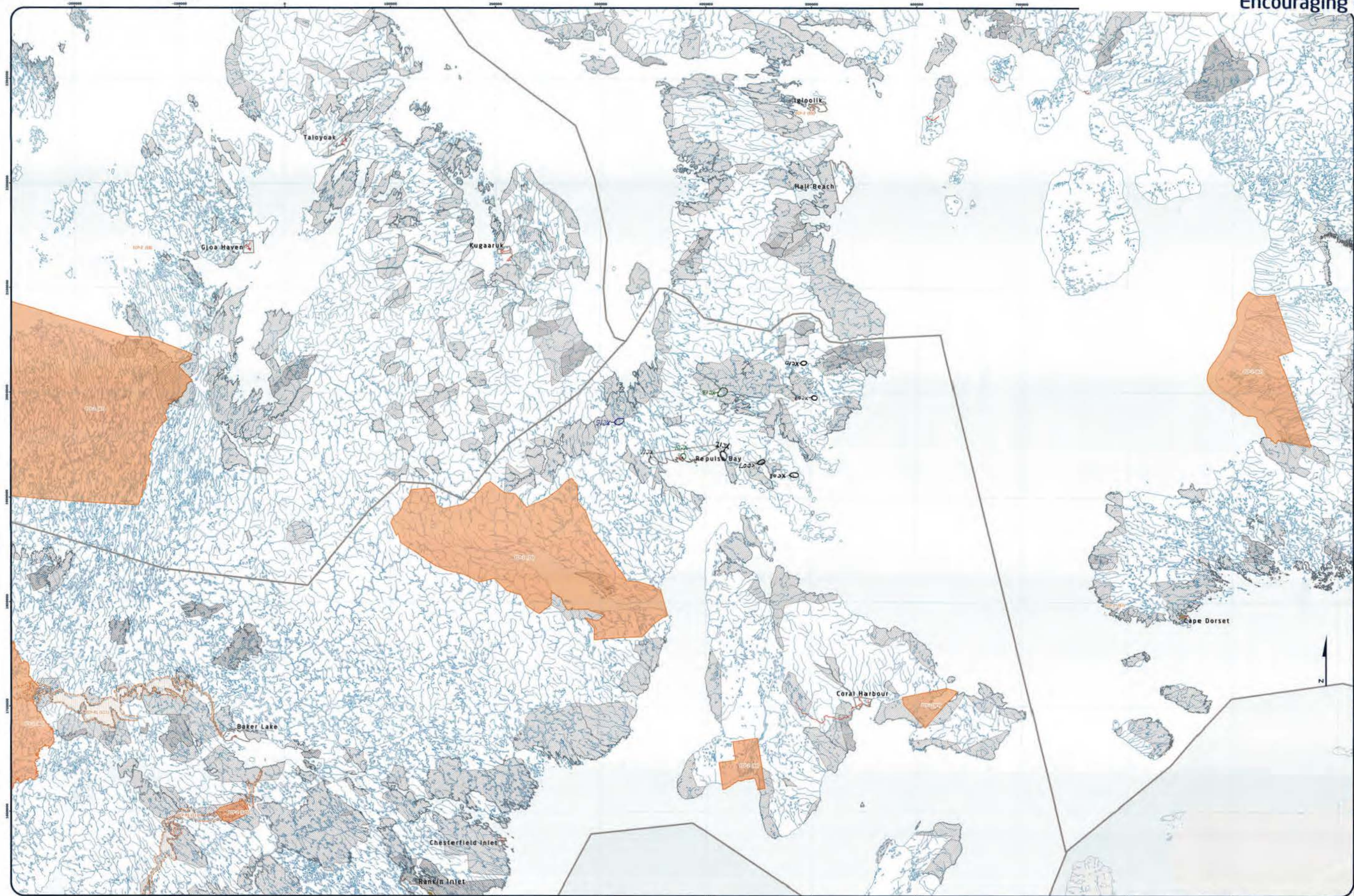
Working Draft Sub-regional map data sources:
Nunavut Land Use Plan and background material data source documents.
Habitat created by utilizing Series method in Habitatatoolbox (courtesy of ESRI) and background material data source documents.
50 hectares or less. Land outside of Nunavut, including any of Nunavut's administrative boundaries consist of NRC draft regional boundaries, created to reflect Regional Inuit Association jurisdictions, combined with municipal boundaries, provided by Natural Resources Canada cadastre data. Inuit Owned Lands (courtesy of Nunavut Tunngavik Incorporated). Territorial parks from the Government of Nunavut, National Parks from Parks Canada.
Data for areas within municipal boundaries obtained from Natural Resources Canada cadastre data.
This map is to be used for reference purposes only by the NRC.
Any further use of this map or data therein must be authorized by contacting the Nunavut Planning Commission at: (867) 783-4625 or email: info@nunavut.ca
Tuesday, January 14, 2014

REPULSE BAY

Scale 1:1,000,000

NPC Regional Map Series

Repulse Bay - Group 1 Results
Encouraging Conservation Planning



Designations	Permitted Uses	Prohibited Uses
XC07	Residential, Industrial, Commercial	Wildlife, Forest
XC08	Residential, Industrial, Commercial	Wildlife, Forest
XC09	Residential, Industrial, Commercial	Wildlife, Forest
XC10	Residential, Industrial, Commercial	Wildlife, Forest
XC11	Residential, Industrial, Commercial	Wildlife, Forest
XC12	Residential, Industrial, Commercial	Wildlife, Forest
XC13	Residential, Industrial, Commercial	Wildlife, Forest
XC14	Residential, Industrial, Commercial	Wildlife, Forest
XC15	Residential, Industrial, Commercial	Wildlife, Forest

Code	Comments
XC07	Sod house
XC08	Sod house
XC09	Sod house
XC10	Sod house
XC11	Sod house
XC12	Sod house
XC13	Sod house
XC14	Sod house
XC15	Sod house

CONFIDENTIAL
Coded by: [Signature]
Nunavut Planning Commission
Community Planning Division
Map 2 of 5

Community: Repulse Bay
Region: Repulse Bay
Community ID: 1000000000
Map 2 of 5

Signatures of the Community (if applicable)
Name (printed) in reply to the letter

1.	2.	3.	4.	5.	6.	7.	8.	9.	10.	11.	12.	13.	14.	15.	16.	17.	18.	19.	20.	21.	22.	23.	24.	25.	26.	27.	28.	29.	30.
----	----	----	----	----	----	----	----	----	-----	-----	-----	-----	-----	-----	-----	-----	-----	-----	-----	-----	-----	-----	-----	-----	-----	-----	-----	-----	-----

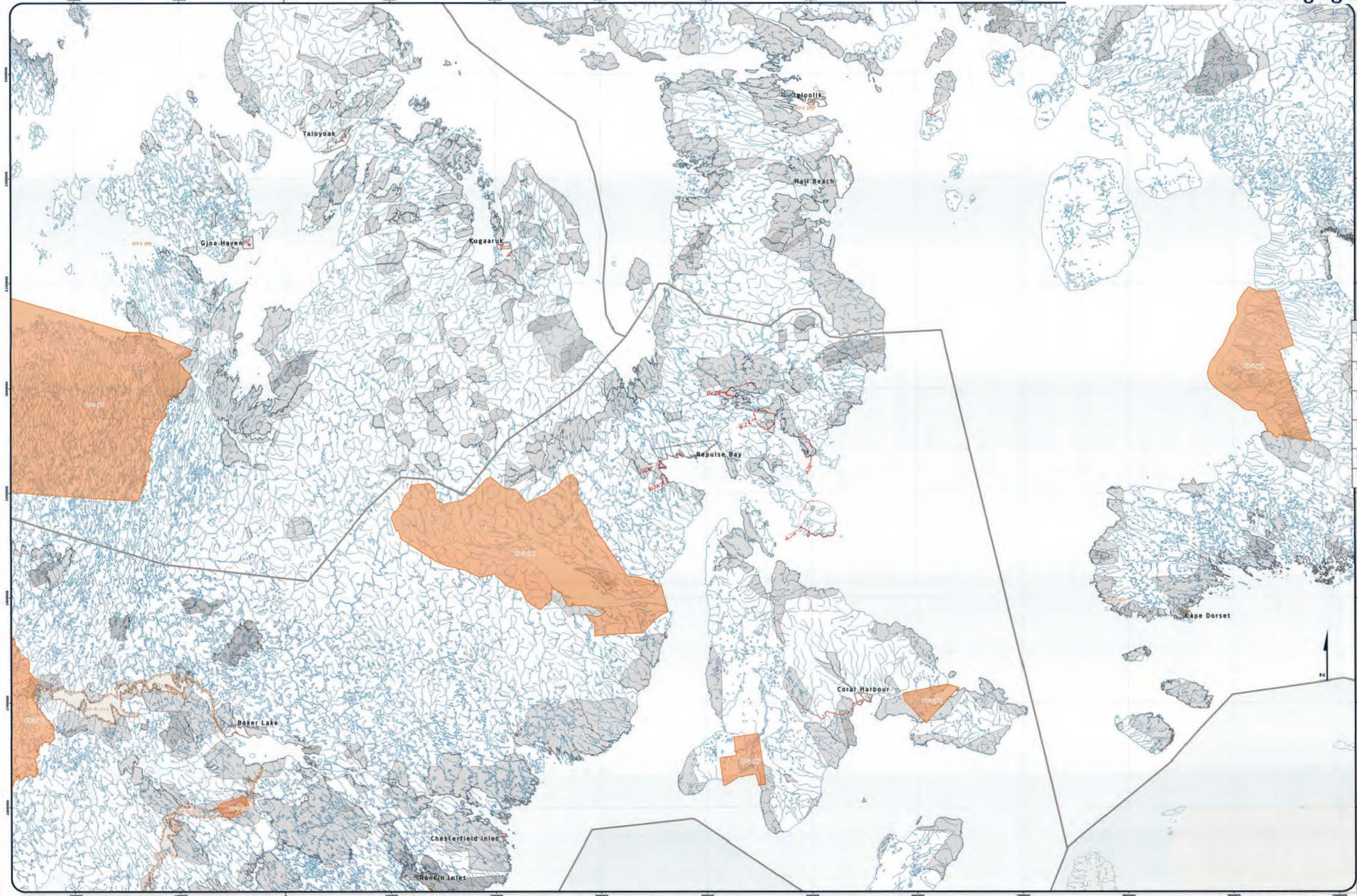
Signature of Mapster: [Signature]



Coordinate System: EPSG:4326 UTM
Projection: Lambert Conformal Conic
Datum: North American 1983
False Easting: 500000
False Northing: 500000
Central Meridian: -60.0000
Standard Parallel 1: 49.0000
Standard Parallel 2: 77.0000
Latitude Of Origin: 49.0000
Units: Meter

MAP 2 of 5

For Land Use Designations and Recommendations sources are Nunavut Land Use Plan and background material data source documents created by merging all 1:250,000 scale maps or Nunavut, version 2.0, and selecting all waterbodies over 50 hectares in size. Land outside of Nunavut, including the Northwest Territories, is shown in grey. Regional boundaries, created to reflect Regional Inuit Association jurisdictions, combined with municipal boundaries, provided by Natural Resources Canada, are shown in black. Trust Owned Lands (Surface) of Repulse Bay are shown in hatched pattern. Territorial parks from the Government of Nunavut, National Parks from Parks Canada. Data for areas within municipal boundaries obtained from Natural Resources Canada cadastre data. This map is to be used for reference purposes only by the NPC. Any further use of this map or data therein must be authorized by contacting the Nunavut Planning Commission at (867) 960-4000 or email: nuplanning@nunavut.ca
Tuesday, January 23, 2018



Legend

- Roads
- Established Parks
- Land Use Permits
- Land Use Prohibitions
- Administrative Boundary

Designations

- Group 1: Protected Areas
- Group 2: Sensitive Areas
- Group 3: Encouraging Conservation Planning

Permitted Uses

- Group 1: No Other Uses
- Group 2: Tourism, Recreation, Research
- Group 3: No Other Uses

Reference Table for Recommendations

Project Proponent: Submit a detailed site-specific plan to the NRC. The plan should include a map of the project area, a description of the project, and a justification for the project. The plan should also include a list of the project's objectives, a list of the project's activities, and a list of the project's expected outcomes. The plan should be submitted to the NRC for review and approval. Once approved, the project can proceed.

Code	Comments
XC07	In 1800's Greenlanders used to be there. There are huts and probably graves. We would want these protected.
XC08	Want protected because my ancestors were buried somewhere in those areas, and that's where they lived.
XC09	Want protected because my ancestors were buried somewhere in those areas, and that's where they lived.
XC10	Want protected because my ancestors were buried somewhere in those areas, and that's where they lived.
XC11	Where my ancestors used to be so must be protected
XC12	Old campsites, where I was living growing up.

Signature of Mapper:

Date: _____

Signature of Community Representative:

Date: _____

Signature of NRC Representative:

Date: _____

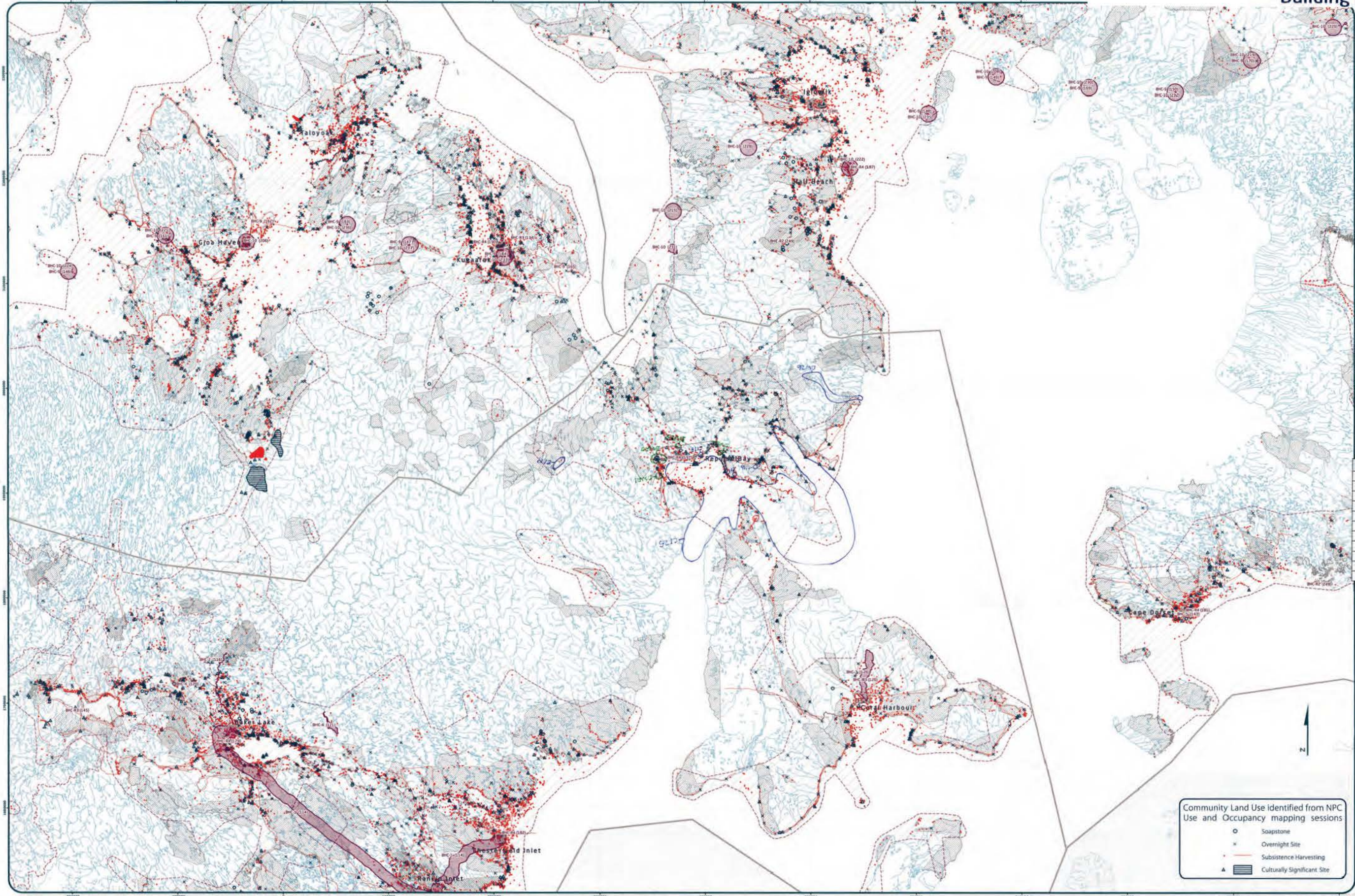
Coordinate System: EPSG 42304 UTM
Projection: Lambert Conformal Conic
Datum: North American 1983
Prime Meridian: 0.0000
Central Meridian: -95.0000
Standard Parallel 1: 49.0000
Standard Parallel 2: 77.0000
Latitude of Origin: 49.0000
Units: Meter

For Land Use Designations and Recommendations sources see draft Nunavut Land Use Plan and background material data source documents.

Map created by: NRC
Map Date: 2014
Map Scale: 1:1,000,000
Map Projection: EPSG 42304 UTM
Map Datum: North American 1983
Map Prime Meridian: 0.0000
Map Central Meridian: -95.0000
Map Standard Parallel 1: 49.0000
Map Standard Parallel 2: 77.0000
Map Latitude of Origin: 49.0000
Map Units: Meter

For Land Use Designations and Recommendations sources see draft Nunavut Land Use Plan and background material data source documents.

Map created by: NRC
Map Date: 2014
Map Scale: 1:1,000,000
Map Projection: EPSG 42304 UTM
Map Datum: North American 1983
Map Prime Meridian: 0.0000
Map Central Meridian: -95.0000
Map Standard Parallel 1: 49.0000
Map Standard Parallel 2: 77.0000
Map Latitude of Origin: 49.0000
Map Units: Meter



Occupation	Permitted Uses	Prohibited Uses
BHC1	Roads, Railways, Utilities and Corridors	
BHC2	Roads, Railways, Utilities and Corridors	
BHC3	All uses except those Prohibited	Wasting
BHC4	Hydro-electrical and related infrastructure	
BHC5	Tourism, Recreation and Research, Municipal Services	
BHC6	Municipal Services	All Other Uses
BHC7	Remediation and Reclamation Activities	All Other Uses
BHC8	Remediation and Reclamation Activities, O&G Operations and Activities	All Other Uses
BHC9	O&G Operations and Activities	All Other Uses

Code	Comments
C116	Soapstone area
C117	Soapstone area
C118	Soapstone area
C119	Soapstone area
DW20	Drinking water
DW21	Drinking water
DW22	Drinking water
DW23	Drinking water
DW24	Drinking water and char
C125	Narwhales & beluga whales
DW26	Drinking water

Code	Comments
C116	Soapstone area
C117	Soapstone area
C118	Soapstone area
C119	Soapstone area
DW20	Drinking water
DW21	Drinking water
DW22	Drinking water
DW23	Drinking water
DW24	Drinking water and char
C125	Narwhales & beluga whales
DW26	Drinking water

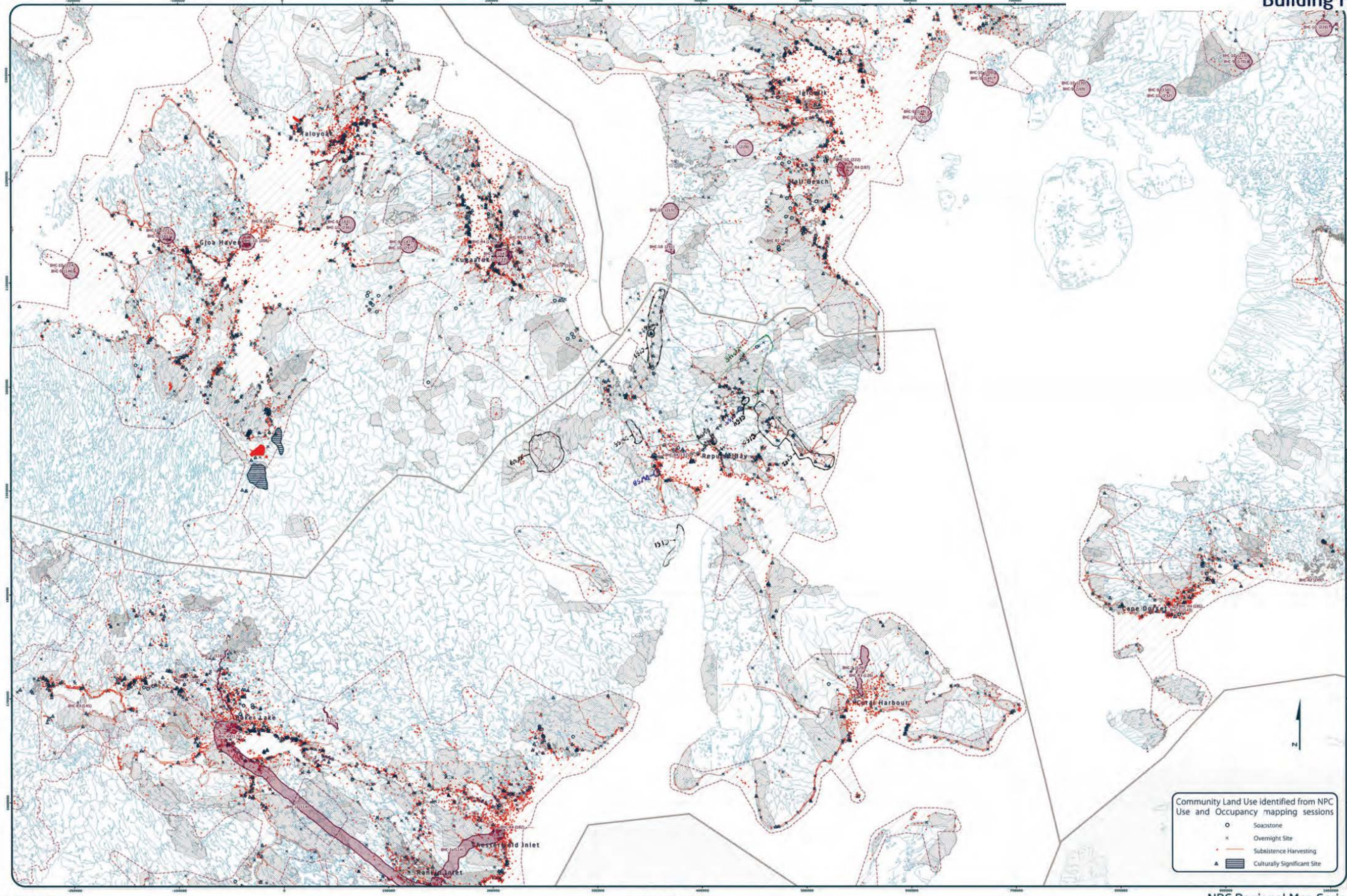
Map of Repulse Bay, Nunavut, Canada. The map shows the community boundaries and land use. The map is titled 'Repulse Bay - Group 1 Results Building Healthier Communities'. The map is dated 2024. The map is created by the Nunavut Planning Commission. The map is a map of the community of Repulse Bay, Nunavut, Canada. The map shows the community boundaries and land use. The map is titled 'Repulse Bay - Group 1 Results Building Healthier Communities'. The map is dated 2024. The map is created by the Nunavut Planning Commission.

Community Land Use Identified from NPC Use and Occupancy mapping sessions

- Soapstone
- Overnight Site
- Subsistence Harvesting
- ▲ Culturally Significant Site

Map 3 of 5

For Land Use Designations and Recommendations, see the Nunavut Land Use Plan and background material. This map is a map of the community of Repulse Bay, Nunavut, Canada. The map shows the community boundaries and land use. The map is titled 'Repulse Bay - Group 1 Results Building Healthier Communities'. The map is dated 2024. The map is created by the Nunavut Planning Commission.



Community Land Use Identified from NPC
Use and Occupancy mapping sessions

- Soaestone
- × Overnight Site
- Subsistence Harvesting
- ▲ Culturally Significant Site



Designations	Permitted Uses	Prohibited Uses
BHC-1	Roads, Railways, Utilities and Conduits	
BHC-2	Roads, Railways, Utilities and Conduits	
BHC-3	All uses except those Prohibited	Mining
BHC-4	Hydro electric and related infrastructure	
BHC-5	Natural, Recreation and Research, Municipal Services	
BHC-6	Municipal Services	All Other Uses
BHC-7	Municipal Services	
BHC-8	Remediation and Rehabilitation Activities	All Other Uses
BHC-9	Remediation and Rehabilitation Activities, O&G Operations and Activities	All Other Uses
BHC-10	O&G Operations and Activities	All Other Uses

BHC Recommendation

Code	Comments
C148	Caribou hunting on foot
C149	Caribou hunting on foot. Also find soapstone when walking.
C150	All sorts of historic sites
C151	Traditional camping grounds
C152	Traditional camping grounds. Sod houses
C153	Traditional camping grounds. Sod houses
C154	Traditional lands
DW55	The best place for drinking water
DW56	Good drinking water. Comes from creek beneath the land. Never stops.
DW57	The best drinking water
DW58	Good drinking water.
CS59	Leftover drums

Code	Comments
C148	Caribou hunting on foot
C149	Caribou hunting on foot. Also find soapstone when walking.
C150	All sorts of historic sites
C151	Traditional camping grounds
C152	Traditional camping grounds. Sod houses
C153	Traditional camping grounds. Sod houses
C154	Traditional lands
DW55	The best place for drinking water
DW56	Good drinking water. Comes from creek beneath the land. Never stops.
DW57	The best drinking water
DW58	Good drinking water.
CS59	Leftover drums

Community: _____
Region: _____
Date: _____
Community #/ID: _____
Map # _____

Signatures of the Community (signify in particular form consistent mapping system as follows):

1.	_____
2.	_____
3.	_____
4.	_____
5.	_____
6.	_____
7.	_____
8.	_____
9.	_____
10.	_____
11.	_____
12.	_____
13.	_____
14.	_____
15.	_____

Signature of Mapper: _____



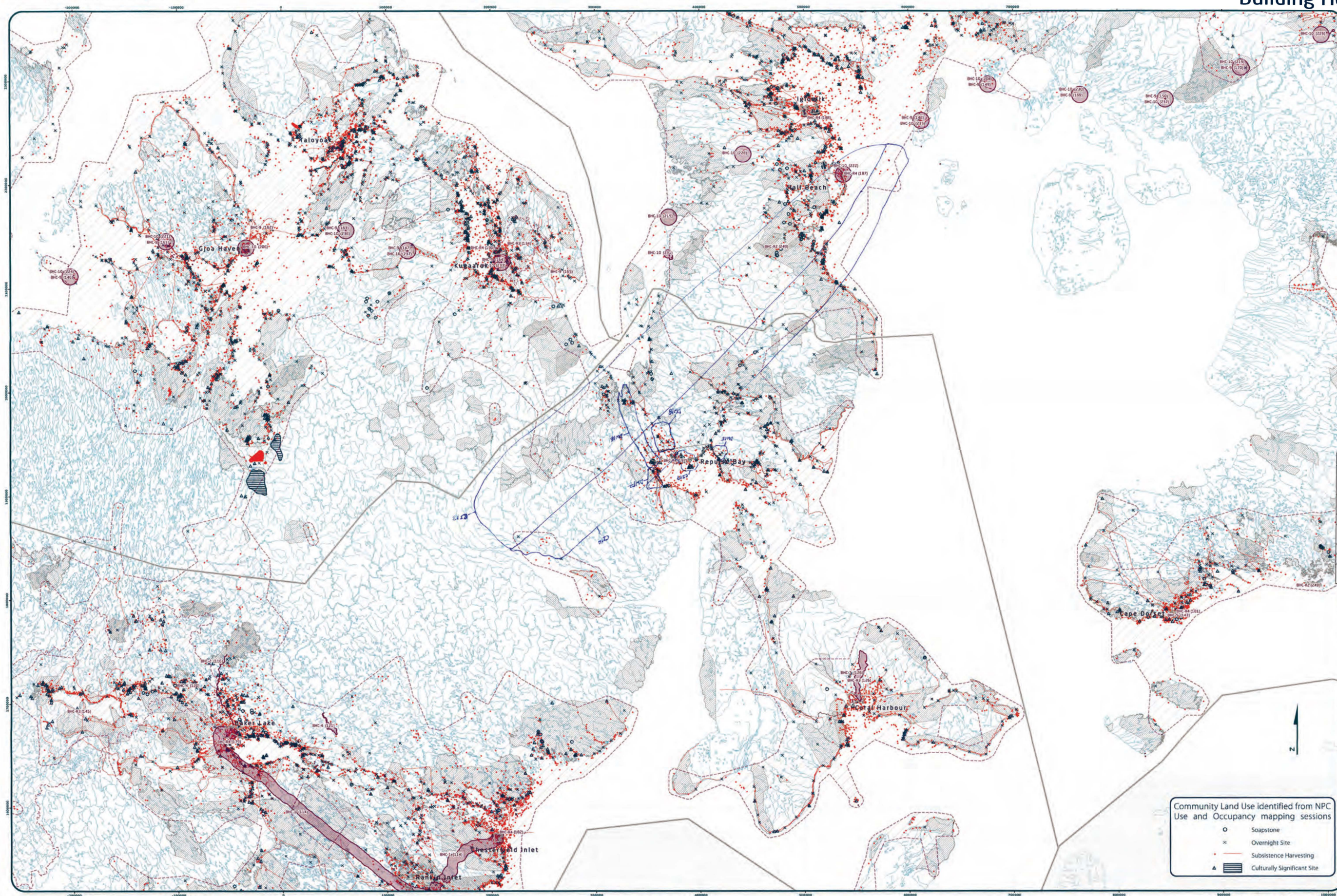
Coordinate System: EPSG 42304 LCC
Projection: Lambert Conformal Conic
Datum: North American 1983
False Easting: 0.0000
False Northing: 0.0000
Central Meridian: -95.0000
Standard Parallel 1: -69.0000
Standard Parallel 2: 77.0000
Latitude Of Origin: 49.0000
Units: Meter

For Land Use Designations and Recommendations sources see Draft Nunavut Land Use Plan and background information. Use and Occupancy data from NPC Use and Occupancy mapping sessions, 2004 to 2013. Map created by mapping data collected in Nunavut, version 2.0, and selecting all waterbodies not 500 metres in size. Land outside of Nunavut, including of Nunavut, Administrative boundaries of NPC draft regional boundaries, created to reflect Regional Inuit Association jurisdictions, combined with municipal boundaries provided by Natural Resources Canada. Data for areas within municipal boundaries obtained from Natural Resources Canada collected data. This map is to be used for reference purposes only by the NPC. Any further use of this map or data is to be authorized by contacting the Nunavut Planning Commission at 867/993-4625 or email nunavutplanning@nrc.gc.ca.
Tuesday, January 23, 2014

Repulse Bay - Group 3 Results Building Healthier Communities

BUILDING HEALTHIER COMMUNITIES (BHC)

Scale 1:1,000,000



Designations	Permitted Uses	Prohibited Uses
BHC-1	Roads, Railways, Utilities and Corridors	
BHC-2	Roads, Railways, Utilities and Corridors	
BHC-3	All uses except those Prohibited	Mining
BHC-4	Hydro electrical and related infrastructure	
BHC-5	Tourism, Recreation and Research, Municipal Services	
BHC-6	Municipal Services	All Other Uses
BHC-7	Municipal Services	
BHC-8	Remediation and Reclamation Activities	All Other Uses
BHC-9	Remediation and Reclamation Activities, O&G Operations and Activities	All Other Uses
BHC-10	O&G Operations and Activities	All Other Uses

BHC Recommendation:

Reference Table for Recommendations:

BHC-10	Project Proposals located in the Inukjuak River Area of Interest should take into account impacts on the cultural value of the area.
BHC-11	Project Proposals located in areas of traditional land use should take into account impacts on the cultural value of the area.
BHC-12	Project Proposals located in the community water supply watershed should take into account impacts on the quality and quantity of community drinking water.
BHC-13	Project Proposals located in a municipal Aerodrome should take into account impacts on aerodrome safety.

Code	Comments
CI13	Spring migration of caribou. That's where we hunt caribou to give to Baffin people, also, main source of food.
CI14	Fall migration of caribou, caribou hunting, Main source of food.
DW15	Want protected for drinking water
DW16	This area is large river that goes to Repulse Bay, protect from contamination.
DW17	Drinking water
DW18	Drinking water
CS19	Where sewage is pouring into ocean - we do not have a sewage lagoon

Community: RE

Region: MLW

Map # 5

Signature of the Community is permitted from localised mapping session as indicated:

1.	16
2.	17
3.	18
4.	19
5.	20
6.	21
7.	22
8.	23
9.	24
10.	25
11.	26
12.	27
13.	28
14.	29
15.	30

Signature of Mapper: [Signature]

Community Land Use Identified from NPC Use and Occupancy mapping sessions

- Soapstone
- × Overnight Site
- Subsistence Harvesting
- ▲ Culturally Significant Site

REPULSE BAY

Scale 1:1,000,000

NPC Regional Map Series

Coordinate System: EPSG 42304 LCC
Projection: Lambert Conformal Conic
Datum: North American 1983
False Easting: 0.0000
Standard Parallel 1: 49.0000
Standard Parallel 2: 77.0000
Latitude Of Origin: 49.0000
Units: Meter

For Land Use Designations and Recommendations sources see draft Nunavut Land Use Plan and background material data source documents.
Habitat created by utilizing Swiss method in Habitatat toolbox courtesy of ESR user forums. Water bodies created by merging all 1:250,000 NTS shorelines in Nunavut - version 2.0, and selecting all waterbodies over 50 hectares in size. Land outside of Nunavut, courtesy of Geogratis. Administrative boundaries consist of NPC draft regional boundaries, created to reflect Regional Health Association jurisdictions, combined with municipal boundaries, provided by Natural Resources Canada (cadastre data). Inuit Owned Lands (country of Nunavut) boundaries incorporated. Territorial parks from the Government of Nunavut, National Parks from Parks Canada. Data for areas within municipal boundaries obtained from Natural Resources Canada (cadastre data).

This map is to be used for reference purposes only by the NPC.
Any further use of this map or data therein must be authorized by contacting the Nunavut Planning Commission at: (867) 993-4625 or email info@npc.nunavut.ca

Tuesday, January 21, 2014

Encouraging Sustainable Economic Development



Code	Comments
XD60	Commercial fishing. Quota set.
XD61	Potential sport fishing
XD62	Commercial fishing. (used to be more)
XD63	lots of fish
XD64	Tourism potential. Lots of wildlife. Bowhead narwhal, beluga...
XD65	Tourism potential. Historic sites, wildlife.

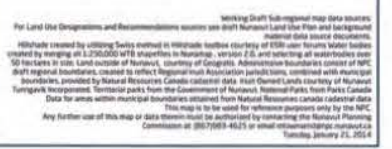
Western Training Corporation
 10000 Wilshire Blvd., Suite 1000
 Los Angeles, CA 90024

Signatures of the elements (signs in parentheses)	
From the standard mapping section of the elements.	
1.	16
2.	17
3.	18
4.	19
5.	20
6.	21
7.	22
8.	23
9.	24
10.	25
11.	26
12.	27
13.	28
14.	29



Coordinate System: EPSG:42304 LCC
Projection: Lambert Conformal Conic
Datum: North American 1983
False Easting: 0.0000
False Northing: 0.0000
Central Meridian: -95.0000
Standard Parallel 1: 49.0000
Standard Parallel 2: 77.0000
Latitude Of Origin: 49.0000
Units: Meter

[illegible]



Designations	Permitted Uses	Prohibited Uses
<p>1. Residential</p> <p>2. Commercial</p> <p>3. Industrial</p> <p>4. Public</p> <p>5. Religious</p> <p>6. Government</p> <p>7. Healthcare</p> <p>8. Education</p> <p>9. Recreation</p> <p>10. Transportation</p> <p>11. Utilities</p> <p>12. Other</p>	<p>1. Residential</p> <p>2. Commercial</p> <p>3. Industrial</p> <p>4. Public</p> <p>5. Religious</p> <p>6. Government</p> <p>7. Healthcare</p> <p>8. Education</p> <p>9. Recreation</p> <p>10. Transportation</p> <p>11. Utilities</p> <p>12. Other</p>	<p>1. Residential</p> <p>2. Commercial</p> <p>3. Industrial</p> <p>4. Public</p> <p>5. Religious</p> <p>6. Government</p> <p>7. Healthcare</p> <p>8. Education</p> <p>9. Recreation</p> <p>10. Transportation</p> <p>11. Utilities</p> <p>12. Other</p>

Code	Comments
MU28	Important area for hunting ground and harvesting
MU29	Burial site
MU30	Burial site

[illegible]

Community Planning Commission
Community Classification Form
Southwest Virginia Center

Community Name: Jefferson Davis
Region: Southwestern
Date: October 1992
Community Size: Small
Map #: 2-2-2

Signature of the Community leader in possession
of this document

CONFIDENTIAL
Community Planning Commission
2001/01/01

1.	_____	16.	_____
2.	_____	17.	_____
3.	_____	18.	_____
4.	_____	19.	_____
5.	_____	20.	_____
6.	_____	21.	_____
7.	_____	22.	_____
8.	_____	23.	_____
9.	_____	24.	_____
10.	_____	25.	_____
11.	_____	26.	_____
12.	_____	27.	_____
13.	_____	28.	_____
14.	_____	29.	_____
15.	_____	30.	_____

Signature of Shipper: Pravin

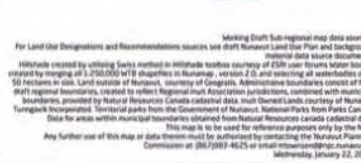

 - MCT - CNUPE
 National Planning Commission
 Comissão Nacional de Planeamento
 Comissão de Planeamento do Conselho Nacional do Ambiente

Coordinate System: EPSG 43264 UCC
 Projection: Lambert Conformal Conic
 Datum: North American 1983
 False Easting: 0.0000
 False Northing: 0.0000
 Central Meridian: -95.0000
 Standard Parallel 1: 49.0000
 Standard Parallel 2: 77.0000
 Latitude Of Origin: 49.0000
 Units: Meter

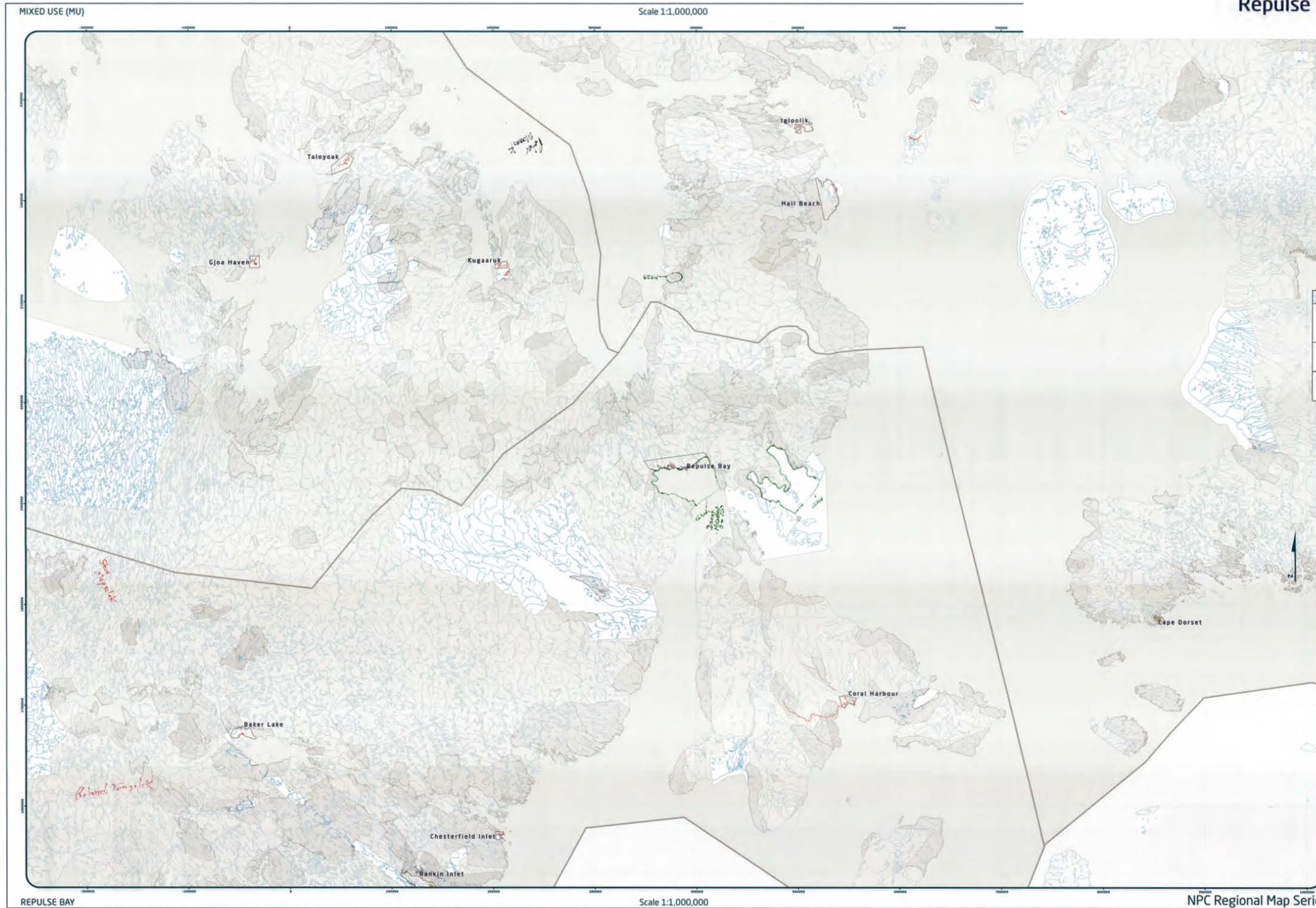
[illegible]

Miss Paul

NPC Regional Map Series



Emmerson

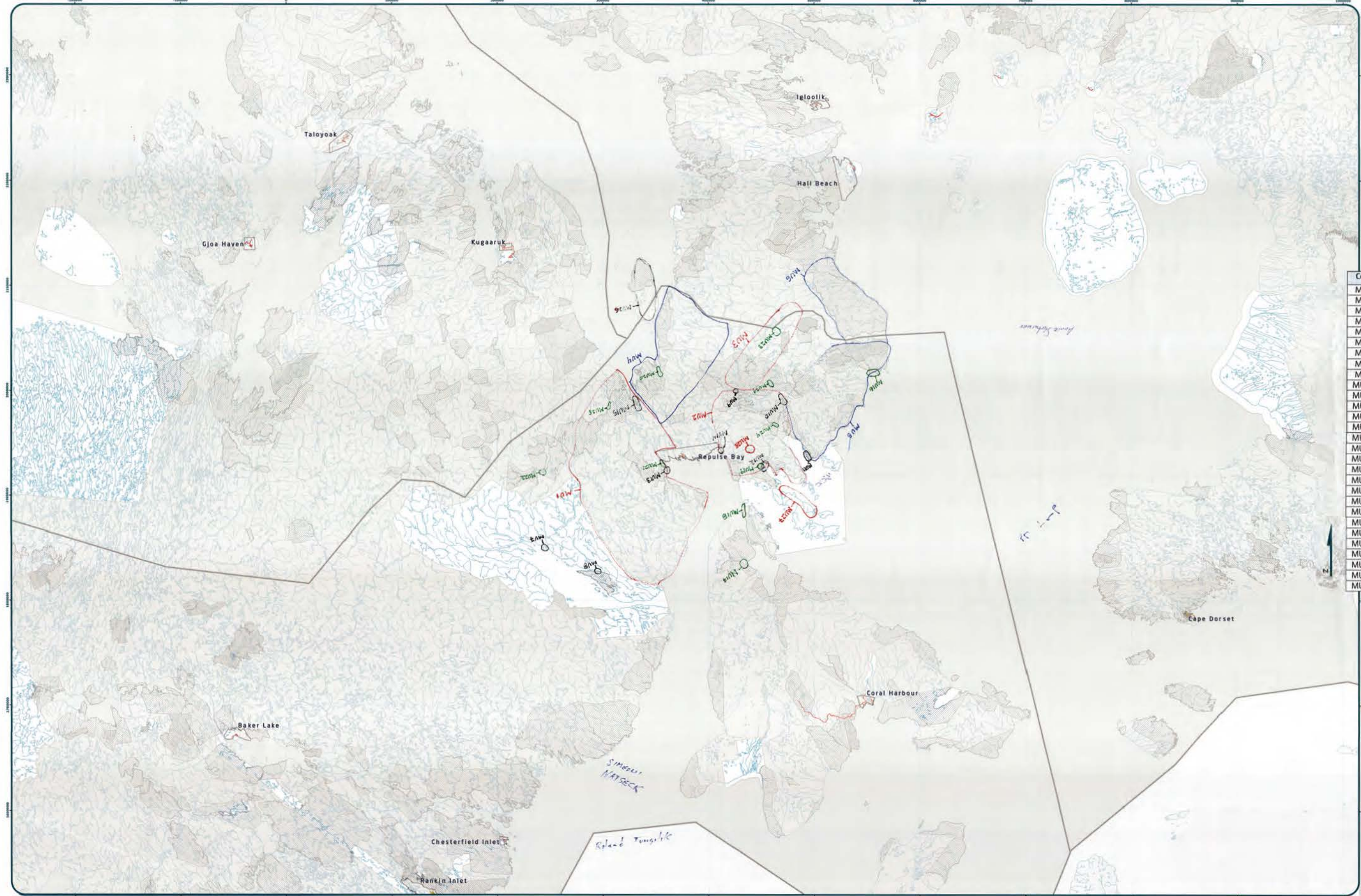


Appendix 4: Wrap Up Session

A small group of participants returned to identify additional important areas during the wrap up session.

During the wrap up session, the following concerns were raised that did not apply to a specific area that was identified on the maps:

- There is an old polar bear trap made of stone in the Committee Bay area. Also others for fox and wolves



Code	Comments
MU1	Caribou hunting
MU2	Good for hunting
MU3	Travel route and caribou habitat
MU4	caribou calving area
MU5	Camping areas because there are caribou.
MU6	caribou calving area
MU7	Grave sites
MU8	Sod house
MU9	Sod house
MU10	Artifacts
MU11	Artifacts
MU12	Sod house
MU13	Sod house and graveyard
MU14	Sod house
MU15	Tent camp (stone frame)
MU16	Camping area
MU17	Sod houses
MU18	Sod houses, traditional land
MU19	Soapstone quarry
MU20	Soapstone
MU21	Soapstone
MU22	Soapstone
MU23	Soapstone
MU24	Soapstone
MU25	Soapstone quarries
MU26	Polar bear denning
MU27	Polar bear denning
MU28	Polar bear denning
MU29	Crystals

Signature of the Community Agency or person
Signature of the Mapper



Appendix 5: Follow-up Meeting

The NPC returned to the community and reviewed a draft version of this report with the Hamlet Council, Hunters and Trappers Organization, and the Community Lands and Resource Committee. The meeting included:

- A presentation of a draft version of this report
- An overview of the mapped information that was recorded for each topic:
 - Protecting and Sustaining the Environment
 - Encouraging Conservation Planning
 - Building Healthier Communities
 - Encouraging Sustainable Economic Development
 - Mixed Use
- General discussion and comments including:
 - Opportunities to provide additional comments.