

Summary of Community Meetings on the  
Draft Nunavut Land Use Plan  
KUGAARUK  
March 18-19, 2014



Revised - May 2014



# Contents

Introduction .....	3	Appendix 1: Open House .....	17
1.1 Context .....	3	Appendix 2: Elected Officials Meeting.....	18
1.2 Purpose.....	3	Appendix 3: Questions and Answers .....	19
1.3 Methodology.....	3	Appendix 4: Community Workshop Scanned Maps.....	20
1.4 Public Awareness .....	3	Appendix 5: Follow-up Meeting.....	31
1.5 Community Population and Participation.....	3		
 Protecting and Sustaining the Environment.....	4		
2.1 Areas presented to participants.....	4		
2.2 Areas identified by participants .....	4		
2.3 Areas of importance to Protecting and Sustaining the Environment..	4		
 Encouraging Conservation Planning.....	6		
3.1 Areas presented to participants .....	6		
3.2 Areas identified by participants .....	6		
3.3 Areas of importance to Encouraging Conservation Planning .....	6		
 Building Healthier Communities .....	8		
4.1 Areas presented to participants.....	8		
4.2 Areas identified by participants.....	8		
4.3 Areas of importance to Building Healthier Communities .....	8		
 Encouraging Sustainable Economic Development .....	10		
5.1 Areas presented to participants.....	10		
5.2 Areas identified by participants.....	10		
5.3 Areas of importance to Encouraging Sustainable Economic Development .....	10		
 Mixed Use.....	12		
6.1 Areas identified in the Draft Plan .....	12		
6.2 Areas identified by participants.....	12		
 Overlapping Goals .....	15		
7.1 Areas identified for multiple goals .....	15		

# Chapter 1: Introduction

## 1.1 Context

The Nunavut Planning Commission (NPC) is preparing a land use plan to guide and direct resource use and development in the Nunavut Settlement Area (NSA). As part of its efforts, the NPC is facilitating discussions in each Nunavut community on land use and resource management issues. Information that is obtained from these discussions will be used to inform decisions regarding the further development of the Nunavut Land Use Plan (NLUP).

## 1.2 Purpose

This report presents information obtained during the NPC's visit to the community of Kugaaruk. The purpose of the report is to inform decisions regarding the further development of the NLUP, ensuring that the plan reflects the priorities and values of residents.

It is important to note that the information contained in the Community Report will be considered in conjunction with all other feedback when revising the DNLUP.

## 1.3 Methodology

Information was presented to and received from participants in Kugaaruk in accordance with the Nunavut Planning Commission's Community Engagement Strategy (Engagement Strategy). The Engagement Strategy provides for the following methods for presenting and receiving information;

- **Open house;** information contained in the Draft Nunavut Land Use Plan (DNLUP) was presented on 7 multi lingual large format poster boards. Participants were encouraged to review the posters, ask questions and provide feedback. Comments and questions were recorded by NPC staff and are contained in Appendix 1.
- **Elected Officials Meeting;** The NPC Chairperson and NPC staff met with senior and elected officials in the community. The development process for the DNLUP, its content and next steps were presented.

Comments and questions were recorded during the session and are contained in Appendix 2.

- **Public Workshop;** A formal presentation of the Draft Plan content was provided to participants, including a slide overview of its content. Following the presentation, questions and comments were received from participants. The questions, comments and responses are contained in Appendix 3.

A mapping session followed the presentation of the Draft Plan. The mapping session involved discussions regarding the topics presented in the DNLUP and encouraged participants to identify additional areas and issues important for inclusion in a NLUP. Information received during this session was recorded by NPC staff and is included in Appendix 4.

- **Wrap Up Session;** Staff was available to discuss the areas identified during the mapping and identify any additional issues or areas of interest.

Areas that participants identified during mapping sessions as important to a particular goal have, in the majority of cases, been included in this report as they were recorded. In instances where participants identified an area that was better suited to another goal, the area has been reclassified to the more suitable goal and has been verified as appropriate to do so by the Community.

A follow-up meeting was held on May 8, 2014 to review a draft version of this report with the Hamlet Council, Hunters and Trappers Organization, and Community Beneficiary Committee. A summary of this meeting is included in Appendix 6.

## 1.4 Public Awareness

The NPC raised public awareness regarding its visit to Kugaaruk in accordance with the Engagement Strategy.

The DNLUP and supporting materials were mailed to the Mayor and Council of Kugaaruk, and the Hunters and Trappers Organization (HTO) in September 2012. In addition, letters of invitation were sent to the Kugaaruk Mayor and Council and

HTO in advance of the NPC's visit to advise of the meetings and to encourage participation. Follow up phone calls were also made.

Public notice of the various events was provided in the following ways:

- **Nunatsiaq News and Nunavut News/North;** notice of community meetings were posted in both newspapers a minimum of 45 days in advance.
- **Co-op cable TV;** notice of community meetings was run a minimum of 45 days in advance for one week and run again for no less than 14 days before the meetings.
- **Community radio;** notices were read by the hosts and a live interview with the Commission Chairperson was conducted.
- **Community bulletin boards;** notices were posted on bulletin boards around the community 45 days and again 14 days in advance of the meetings.
- **Community mail drop;** one page flyers that announced the meetings and their purpose were delivered to the post office in each community for all mail boxes that accept unaddressed ad-mail.
- **nunavut.ca;** the schedule of community visits, the Draft Plan, and all supporting information was available on the Commission's website.

## 1.5 Community Population and Participation

Kugaaruk is a community of approximately 770 people (Statistics Canada, 2011 Census). It is located on the shore of Pelly Bay (see Figure 1).

The Commission visited the community on March 18-19, 2014. All events occurred as scheduled. The sessions were attended as follows;

- **Elected Officials Meeting;** the Mayor and members of the Hamlet Council and HTO attended the elected officials meeting.
- **Open house;** approximately 10 people attended the open house to review the Draft Plan.
- **Public Workshop;** approximately 50 people attended the presentation of the DNLUP and facilitated mapping sessions. Information was recorded in two separate mapping groups.
- **Wrap Up Session;** 0 people attended the wrap up session.



Figure 1. Location of Kugaaruk

# Chapter 2: Protecting and Sustaining the Environment

Protecting and Sustaining the Environment was one of five topics presented to and discussed by participants during the Open House, Elected Officials Meeting, Public Workshop and Wrap up Session, collectively referred to in this document as information sharing and gathering sessions.

## 2.1 Areas presented to participants

During the information sharing and gathering sessions, participants were presented the following areas and issues as important to Protecting and Sustaining the Environment.

- Key bird habitat sites
- Caribou Habitat sites
- Atlantic Cod Lakes
- Cumulative Impacts
- Transboundary considerations
- Climate change

The importance of these issues and areas to Protecting and Sustaining the Environment was not disputed by participants during the information sharing and gathering sessions.

## 2.2 Areas identified by participants

Additional areas and issues were identified by participants as important to Protecting and Sustaining the Environment during the information sharing and gathering sessions. These additional areas are;

- Hunting and fishing areas
- Caribou habitat
- Polar bear habitat
- Bird habitat
- Fish habitat

## 2.3 Areas of importance to Protecting and Sustaining the Environment

Areas and issues discussed during the information sharing and gathering sessions as important to Protecting and Sustaining the Environment are illustrated on Map 1, including areas identified in the DNLUP and areas identified by the community. Scanned images of the maps on which community feedback was recorded can be found in Appendix 4.

Based on discussions with participants, the NPC understands that:

- The areas identified on Map 1 are considered by the Community to be important to Protecting and Sustaining the Environment.
- In these areas, the community would like the NLUP to encourage activities that support environmental protection and management needs, including wildlife conservation, protection and management.

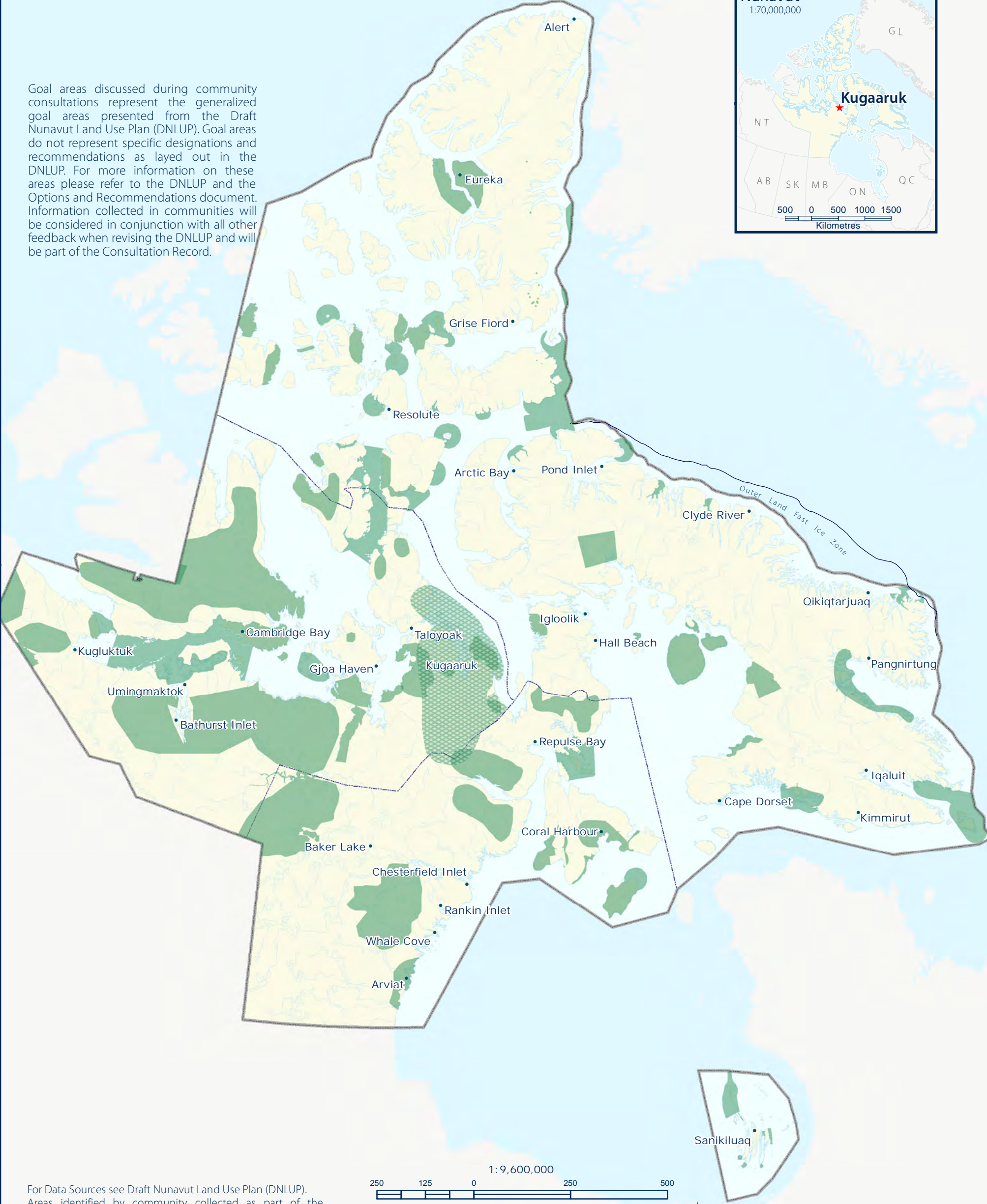
This feedback will be considered in conjunction with all other feedback when revising the DNLUP.



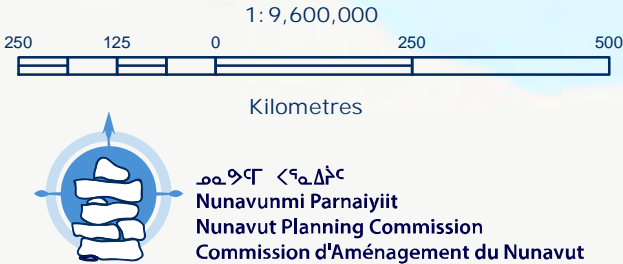


-  PSE Goal areas from the DNLUP discussed during community consultations
-  Additional PSE Goal areas identified during community consultations

Goal areas discussed during community consultations represent the generalized goal areas presented from the Draft Nunavut Land Use Plan (DNLUP). Goal areas do not represent specific designations and recommendations as layed out in the DNLUP. For more information on these areas please refer to the DNLUP and the Options and Recommendations document. Information collected in communities will be considered in conjunction with all other feedback when revising the DNLUP and will be part of the Consultation Record.



For Data Sources see Draft Nunavut Land Use Plan (DNLUP). Areas identified by community collected as part of the Nunavut Planning Commissions Community Engagement Strategy during the Mapping Sessions for the DNLUP on March 18 & 19, 2014. Maps were digitized at the Nunavut Planning Commission. To be used for illustration purposes only as part of the Draft Nunavut Land Use Plan Consultation Process.



Projection: Canada Lambert Conformal Conic, NAD83  
Produced by the Nunavut Planning Commission: (867)983-4625, npc@nunavut.ca  
May-28-14



## Chapter 3: Encouraging Conservation Planning

Encouraging Conservation Planning was one of five topics presented to and discussed by the participants during the information sharing and gathering sessions.

### 3.1 Areas presented to participants

During the information sharing and gathering sessions, participants were presented the following areas and issues as important to Encouraging Conservation Planning;

- National Parks Awaiting Full Establishment
- Proposed National Parks
- National Marine Conservation Areas
- Thelon Wildlife Sanctuary
- Migratory Bird Sanctuaries
- National Wildlife Areas
- National Historic Sites
- Territorial Historic Sites
- Heritage Rivers

The importance of these issues and areas to Encouraging Conservation Planning was not disputed by participants during the information sharing and gathering sessions.

### 3.2 Areas identified by participants

Additional areas and issues were identified by participants as important to Encouraging Conservation Planning during the information sharing and gathering sessions. These additional areas are.

- Bird Habitat
- Historic sites
- Potential territorial park area

- Camping areas
- Fishing rivers

### 3.3 Areas of importance to Encouraging Conservation Planning

Areas and issues discussed during the information sharing and gathering sessions as important to Encouraging Conservation Planning are illustrated on Map 2, including areas identified in the DNLUP and areas identified by the community. Scanned images of the maps on which community feedback was recorded can be found in Appendix 4.

Based on discussions with participants, the NPC understands that:

- The areas identified on Map 2 are considered by the Community to be important to Encouraging Conservation Planning.
- In these areas, the community would like the NLUP to encourage activities that support environmental protection and management needs, including wildlife conservation, protection and management.

This feedback will be considered in conjunction with all other feedback when revising the DNLUP.





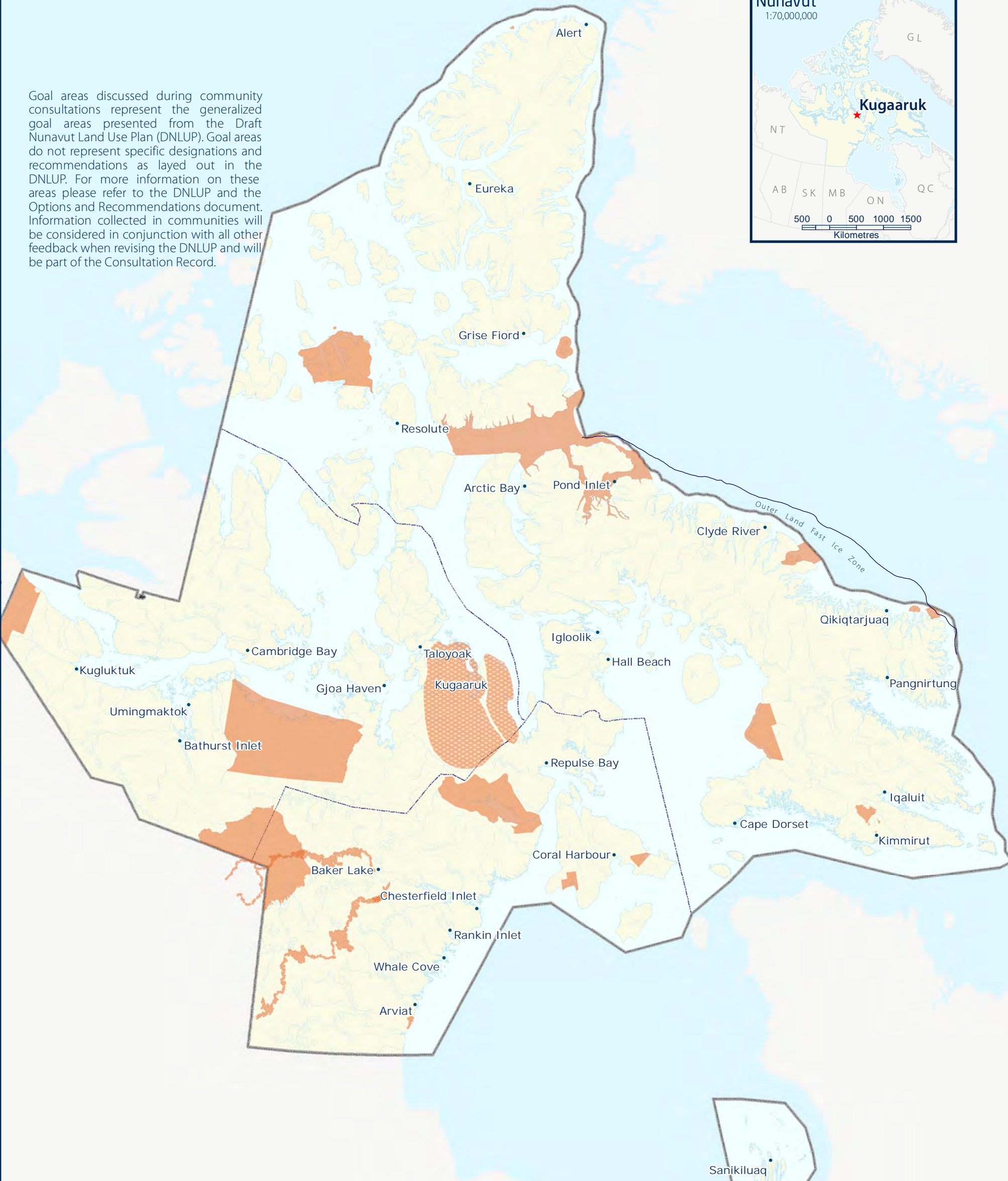


ECP Goal areas from the DNLUP discussed during community consultations



Additional ECP Goal areas identified during community consultations

Goal areas discussed during community consultations represent the generalized goal areas presented from the Draft Nunavut Land Use Plan (DNLUP). Goal areas do not represent specific designations and recommendations as layed out in the DNLUP. For more information on these areas please refer to the DNLUP and the Options and Recommendations document. Information collected in communities will be considered in conjunction with all other feedback when revising the DNLUP and will be part of the Consultation Record.



For Data Sources see Draft Nunavut Land Use Plan (DNLUP). Areas identified by community collected as part of the Nunavut Planning Commissions Community Engagement Strategy during the Mapping Sessions for the DNLUP on March 18 & 19, 2014. Maps were digitized at the Nunavut Planning Commission. To be used for illustration purposes only as part of the Draft Nunavut Land Use Plan Consultation Process.



ᓄᓇᓂᓄᓐ ᐸᓐᓇᓂᓄᓐ  
Nunavunmi Parnaiyiit  
Nunavut Planning Commission  
Commission d'Aménagement du Nunavut



Projection: Canada Lambert Conformal Conic, NAD83  
Produced by the Nunavut Planning Commission: (867)983-4625, npc@nunavut.ca  
May-28-14



Building Healthier Communities was one of five topics presented to and discussed by the participants during the information sharing and gathering sessions.

### 4.1 Areas presented to participants

During the information sharing and gathering sessions, participants were presented the following areas and issues as important to Building Healthier Communities;

- Areas of Community Interest
- Community Land Use
- Transportation Infrastructure
- Unincorporated Communities
- Alternative Energy Sources
- Community drinking water supplies
- Land remediation
- Northern Contaminated Sites Program
- Aerodromes
- Canadian Forces Station
- Northern Warning System sites

The importance of these issues and areas to Building Healthier Communities was not disputed by participants.

### 4.2 Areas identified by participants

Additional areas and issues were identified by participants as important to contributing to the goal of Building Healthier Communities during the information sharing and gathering sessions. These additional areas are;

- Fishing and hunting areas

- Drinking water
- Cabin areas
- Contaminated sites
- Culturally significant areas

### 4.3 Areas of importance to Building Healthier Communities

Areas and issues discussed during the information sharing and gathering sessions as important to Building Healthier Communities are illustrated on Map 3, including areas identified in the DNLUP and areas identified by the community. Scanned images of the maps on which community feedback was recorded can be found in Appendix 4.



Based on discussions with participants, the NPC understands that:

- The areas identified on Map 3 are considered by the Community to be important to Building Healthier Communities.
- In these areas, the community would like the NLUP to encourage activities that support community needs and cultural priorities.

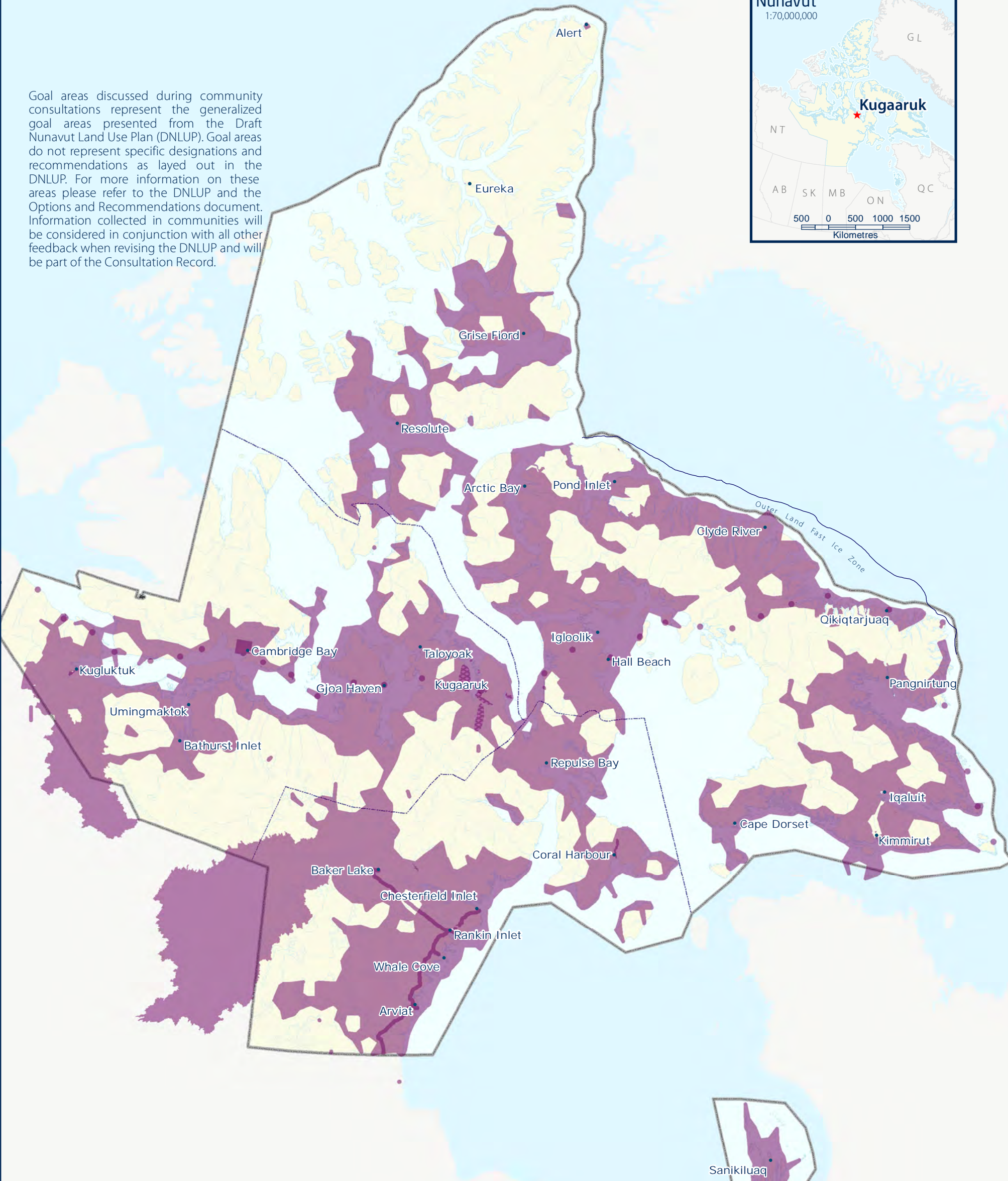
This feedback will be considered in conjunction with all other feedback when revising the DNLUP.





-  BHC Goal areas from the DNLUP discussed during community consultations
-  Additional BHC Goal areas identified during community consultations

Goal areas discussed during community consultations represent the generalized goal areas presented from the Draft Nunavut Land Use Plan (DNLUP). Goal areas do not represent specific designations and recommendations as layed out in the DNLUP. For more information on these areas please refer to the DNLUP and the Options and Recommendations document. Information collected in communities will be considered in conjunction with all other feedback when revising the DNLUP and will be part of the Consultation Record.



For Data Sources see Draft Nunavut Land Use Plan (DNLUP). Areas identified by community collected as part of the Nunavut Planning Commissions Community Engagement Strategy during the Mapping Sessions for the DNLUP on March 18 & 19, 2014. Maps were digitized at the Nunavut Planning Commission. To be used for illustration purposes only as part of the Draft Nunavut Land Use Plan Consultation Process.



Projection: Canada Lambert Conformal Conic, NAD83  
Produced by the Nunavut Planning Commission: (867)983-4625, npc@nunavut.ca  
May-28-14



# Chapter 5: Encouraging Sustainable Economic Development

Encouraging Sustainable Economic Development was one of five topics presented to and discussed by the participants during the information sharing and gathering sessions.

## 5.1 Areas presented to participants

During the information sharing and gathering sessions, participants were presented with the following areas important to Encouraging Sustainable Economic Development;

- Mineral Exploration and Production
- Oil and Gas Exploration
- Commercial Fisheries

The importance of these issues and areas to Encouraging Sustainable Economic Development was not disputed by participants during the information sharing and gathering sessions.

## 5.2 Areas identified by participants

Additional areas and issues were identified by participants as important to Encouraging Sustainable Economic Development during the information sharing and gathering sessions. The additional areas identified are;

- Commercial fisheries
- Polar bear sports hunting

## 5.3 Areas of importance to Encouraging Sustainable Economic Development

Areas and issues discussed during the information sharing and gathering sessions as important to Encouraging Sustainable Economic Development are illustrated on Map 4, including areas identified in the DNLUP and areas identified by the community. Scanned images of the maps on which

community feedback was recorded can be found in Appendix 4.

Based on discussions with participants, the NPC understands that:

- The areas identified on Map 4 are considered by the Community to be important to Encouraging Sustainable Economic Development.
- In these areas, the community would like the NLUP to encourage activities that support economic opportunities and needs.

This feedback will be considered in conjunction with all other feedback when revising the DNLUP.

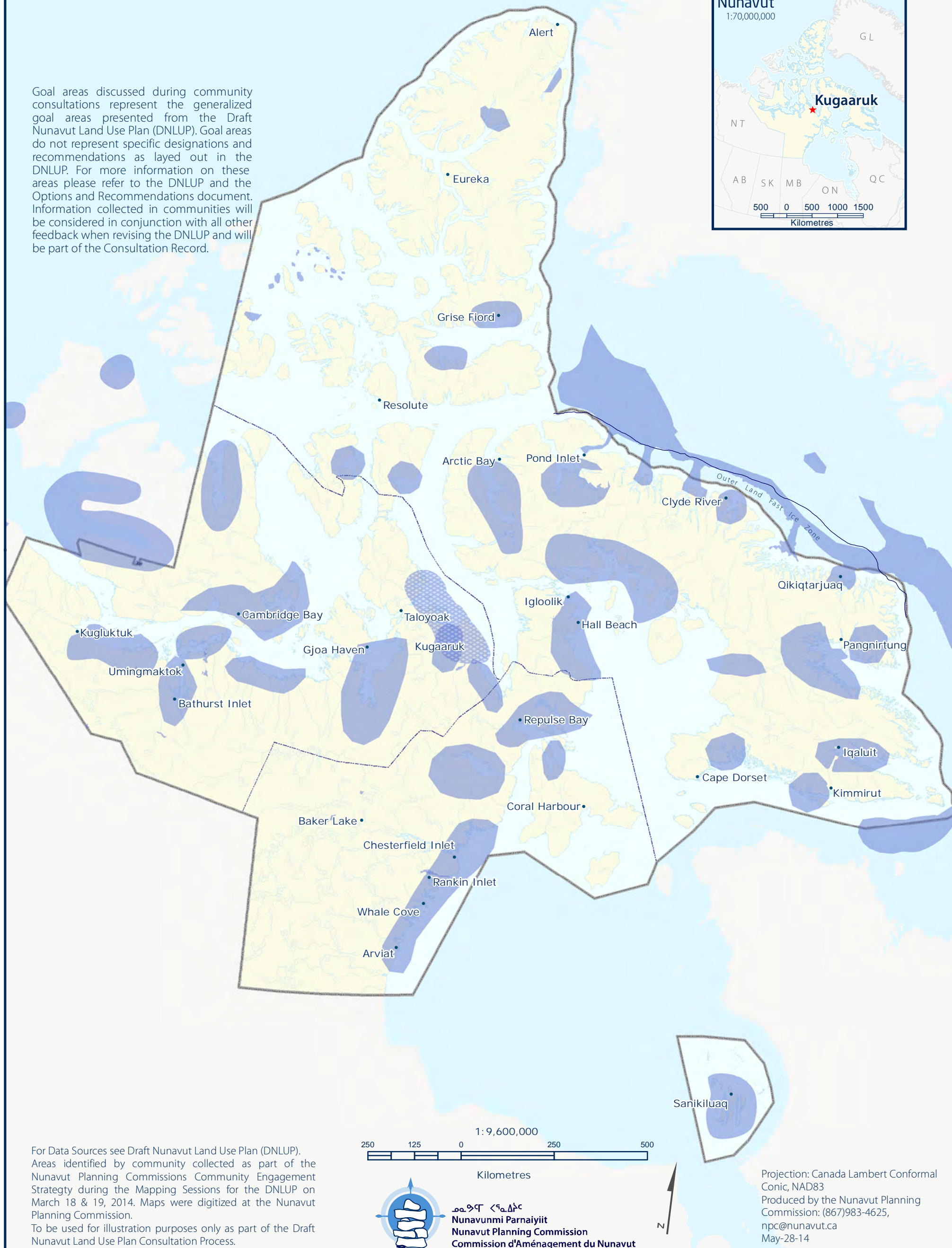




**ESED Goal areas from the DNLUP discussed during community consultations**

 Additional ESED Goal areas identified during community consultations

Goal areas discussed during community consultations represent the generalized goal areas presented from the Draft Nunavut Land Use Plan (DNLUP). Goal areas do not represent specific designations and recommendations as layed out in the DNLUP. For more information on these areas please refer to the DNLUP and the Options and Recommendations document. Information collected in communities will be considered in conjunction with all other feedback when revising the DNLUP and will be part of the Consultation Record.



For Data Sources see Draft Nunavut Land Use Plan (DNLUP). Areas identified by community collected as part of the Nunavut Planning Commissions Community Engagement Strategy during the Mapping Sessions for the DNLUP on March 18 & 19, 2014. Maps were digitized at the Nunavut Planning Commission.

To be used for illustration purposes only as part of the Draft Nunavut Land Use Plan Consultation Process.

Projection: Canada Lambert Conformal  
Conic, NAD83  
Produced by the Nunavut Planning  
Commission: (867)983-4625,  
npc@nunavut.ca  
May-28-14

### 6.1 Areas identified in the Draft Plan

The DNLUP identifies areas important for a variety of uses. These areas were presented to participants during the workshop as Mixed Use Areas. These areas, as they occur around the community, are illustrated on Map 5.

### 6.2 Areas identified by participants

No additional areas were identified as Mixed Use by participants. However, some areas identified as Mixed Use in the DNLUP were considered by participants to require additional protection because of their particular qualities. These areas and the goals they are important for are identified on Map 6.

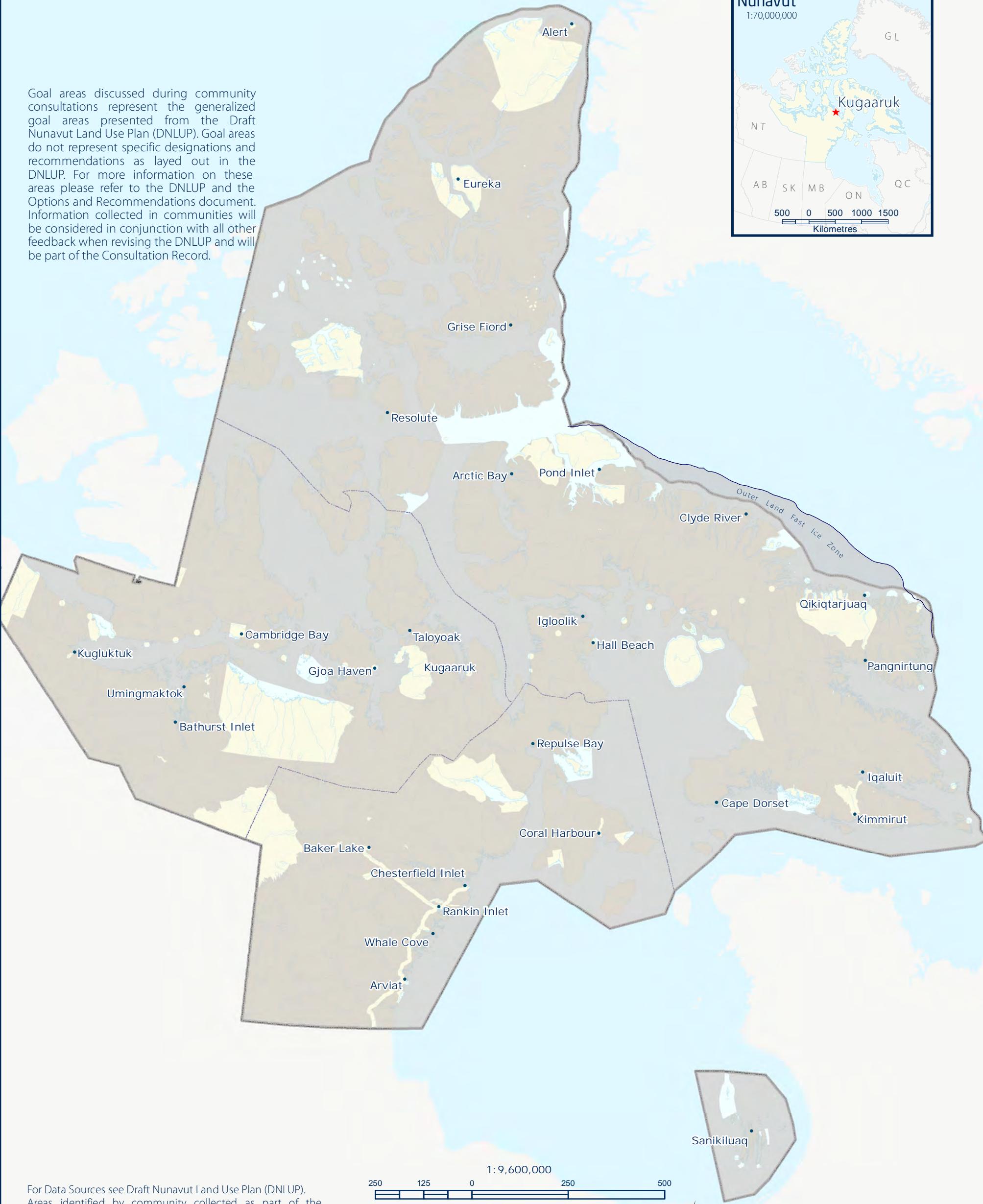






MU Goal areas from DNLUP discussed during community consultations

Goal areas discussed during community consultations represent the generalized goal areas presented from the Draft Nunavut Land Use Plan (DNLUP). Goal areas do not represent specific designations and recommendations as layed out in the DNLUP. For more information on these areas please refer to the DNLUP and the Options and Recommendations document. Information collected in communities will be considered in conjunction with all other feedback when revising the DNLUP and will be part of the Consultation Record.



For Data Sources see Draft Nunavut Land Use Plan (DNLUP). Areas identified by community collected as part of the Nunavut Planning Commissions Community Engagement Strategy during the Mapping Sessions for the DNLUP on March 18 & 19, 2013. Maps were digitized at the Nunavut Planning Commission. To be used for illustration purposes only as part of the Draft Nunavut Land Use Plan Consultation Process.



ᓄᓇᓂᓄᓐ ᐸᓐᓇᓂᓄᓐ  
Nunavunmi Parnaiyiit  
Nunavut Planning Commission  
Commission d'Aménagement du Nunavut

N

Projection: Canada Lambert Conformal Conic, NAD83  
Produced by the Nunavut Planning Commission: (867)983-4625, npc@nunavut.ca  
Wednesday, April 23, 2014



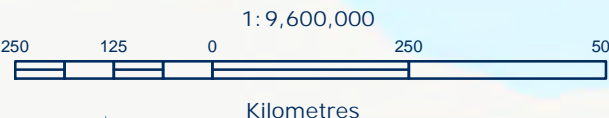


Goal areas discussed during community consultations represent the generalized goal areas presented from the Draft Nunavut Land Use Plan (DNLUP). Goal areas do not represent specific designations and recommendations as laid out in the DNLUP. For more information on these areas please refer to the DNLUP and the Options and Recommendations document. Information collected in communities will be considered in conjunction with all other feedback when revising the DNLUP and will be part of the Consultation Record.



For Data Sources see Draft Nunavut Land Use Plan (DNLUP). Areas identified by community collected as part of the Nunavut Planning Commissions Community Engagement Strategy during the Mapping Sessions for the DNLUP on March 18 & 19, 2014. Maps were digitized at the Nunavut Planning Commission.

To be used for illustration purposes only as part of the Draft Nunavut Land Use Plan Consultation Process.



**ᓄᓇᓂᓂᓐ ᐸᓇᐱᓐᓐᓐᓐ**  
**Nunavunmi Parnaiyiit**  
**Nunavut Planning Commission**  
**Commission d'Aménagement du Nunavut**

Projection: Canada Lambert Conformal  
Conic, NAD83  
Produced by the Nunavut Planning  
Commission: (867)983-4625,  
[npc@nunavut.ca](mailto:npc@nunavut.ca)  
Wednesday, April 23, 2014



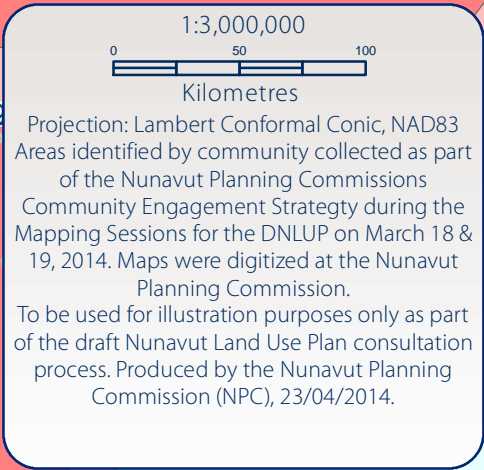
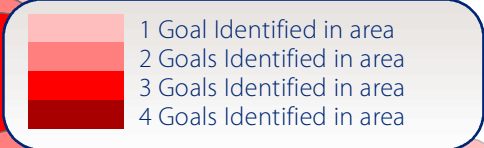
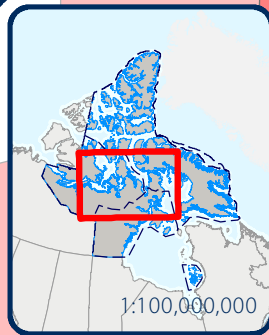
### 7.1 Areas identified for multiple goals

All areas discussed with the community as important for a particular goal are shown on Map 7. In some instances, areas have been identified as important for multiple goals. These areas, and the specific goals they are important to, are also shown on Map 7. In these areas, the NPC will take all of the identified goals and all other feedback into consideration when revising the DNLUP.





# Kugaaruk • Map 7 Overlapping Goal Areas



Label	Goals in Area
A	PSE
B	ECP
C	BHC
D	ESED
E	PSE, ECP
F	BHC, ECP
G	BHC, PSE
H	ESED, ECP
I	ESED, PSE
K	BHC, ESED
L	BHC, PSE, ECP
M	BHC, ESED, ECP
N	BHC, ESED, PSE
O	ESED, PSE, ECP
P	All Goals (BHC, ESED, PSE, ECP)



## Appendix 1: Open House

During the open house, participants raised the following issues:

- There is an important Polar Bear area northeast of Kugaaruk on the coast
- Kugaaruk people are in disagreement with people from Repulse Bay about wildlife harvesting. They come from the Kivalliq to use Polar Bear tags up here but we can't go harvest Narwhal in their area.
- I go between Kugaaruk to visit Gjoa Haven across the bird area on PSE poster.



## Appendix 2: Elected Officials Meeting

The elected officials meeting was attended by the Mayor and members of the Hamlet Council and HTO. During the meeting, participants raised the following issues:

- There have been concerns raised by the community about how industry leaves the land after it is done.
- We have been trying to recommend having the area across the bay set as a park. It is the area where we do all of our hunting and fishing. They would only accept the old stone church as being in a park. But we want the area across the bay set up as a park.
- Would like to see a 100 mile buffer around the community.



## Appendix 3: Questions and Answers

During the community workshop, there was a question and answer period, which included a discussion of the following topics:

- Chapter 3 slide - Why is it missing park study info? Back to slide on chapter 4. Access road is dusty inside community and want access for clam digging/hunting grounds. It would be very useful for elders to get access further. Elders like to camp up there in the summer.
  - The Commission responded that the NPC works with all government, NTI, DIOs, industry, anybody, with any data available we get. The NPC is mandated to come here and listen to what the community wants, how they want it used and managed. Yes we do work with other organizations and are aware of consultations with parks. Chapter 4 - BHC - You mention dust, and further development of road – the municipality has jurisdiction and GN is tasked to develop infrastructure.
- Chapter 5 - Commercial fisheries. Yes of course we could get more access to commercial fishing, but if we try to start a project, it is more difficult with government to let it get going. Fishing occurs with quota in Pangnirtung. Deep sea fish could help the economy of the community.
  - The Commission requested that areas with opportunities be identified during mapping session.
- At the mouth of the river called Kugaaruk and one lake discussed for a while at Dewline Lake, there is a runway and a dump. Equipment disposed of in lake and that lake flows into our river. They are not taken out of the lake yet. Char go through this lake. This river connects to the lake and some of the fish now have defective skin. Old dewline site is restored but lake not restored.
  - The Commission responded that tonight during mapping session it is important to highlight. It is our mandate in NLCA to prioritize clean up sites. We haven't done much in this area to be honest but we want this information.
- Road going to Dewline lake. The river flows over and leaves boulders on bare rock. High risk for elders who harvest every summer. I get assistance to move boulders to the side of the road. Elders sit around in home and they become unhealthy so if they get more support, could get out. Some elders can't get out from their home anymore.
- Concerned about land remediation. There are a number of fishers at river. There are other contaminated areas. Can they be monitored yearly or in a few years to come?
- I used to work on Dewline sites. Every year there's a monitoring for them and old mine sites as well.
- There are islands where we go Polar Bear hunting. I will map them.





## Appendix 4: Community Workshop Scanned Maps

Two groups completed the mapping session to identify important areas. This Appendix contains the maps that were used by participants to identify areas that are important to the following land use planning goals:

- Protecting and Sustaining the Environment
- Encouraging Conservation Planning
- Building Healthier Communities
- Encouraging Sustainable Economic Development
- Mixed Use

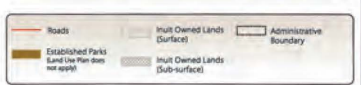
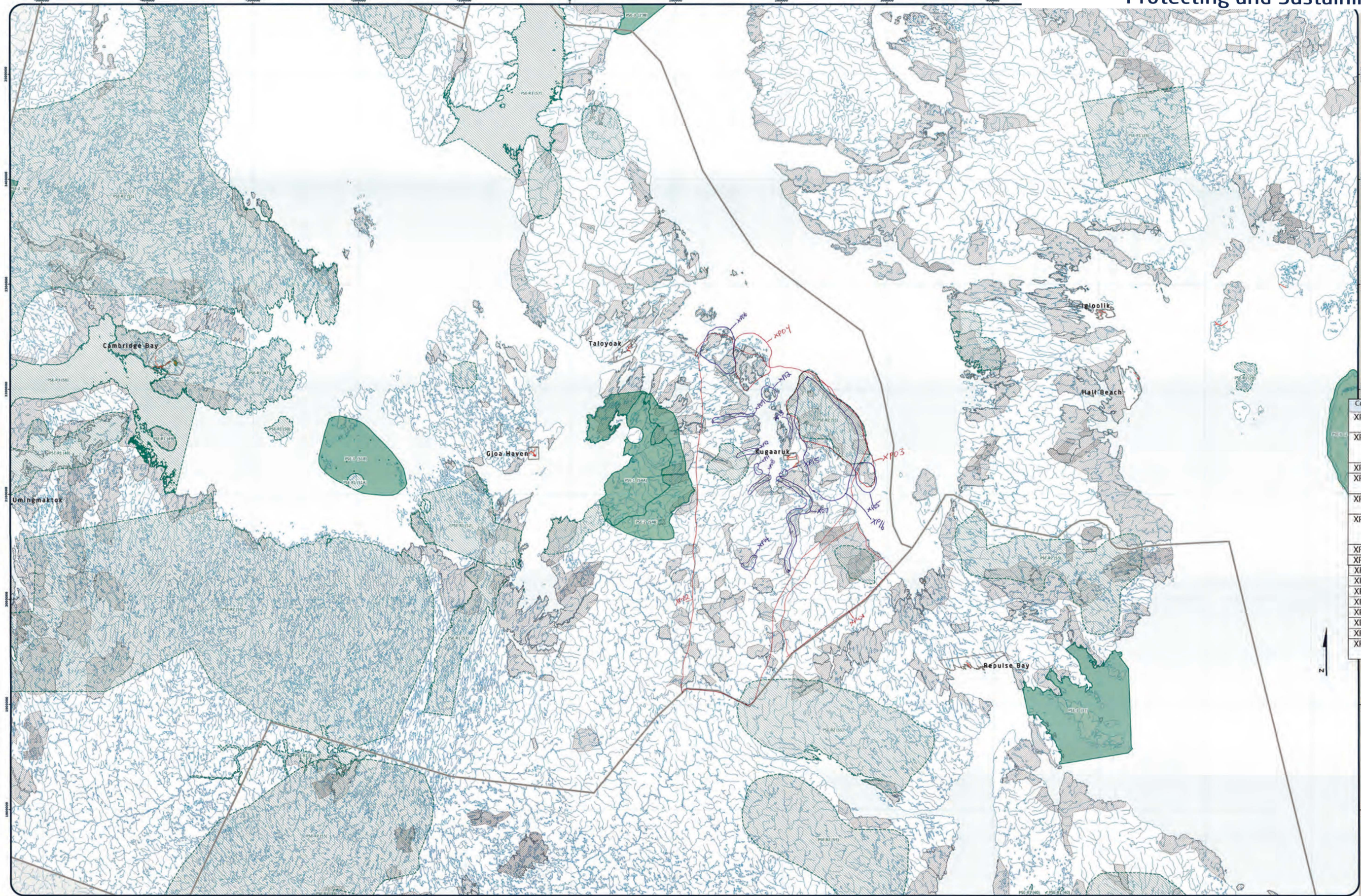
Also included on each map is a reference table that includes the specific values that were identified for the area.

Note: The documented comments for Group 1 were not verified with an audio recording.

During the mapping portion of the community workshop, the following concerns were raised that did not apply to a specific area that was identified on the maps:

- All of these places have names. Every time a mining company comes they change the name to southern words.
- Cabin areas to north side of Kugaaruk are for seal hunting. Cabin areas to the south side of Kugaaruk are for fishing and caribou
- Soapstone sites are already marked
- For drinking water we go to Atonitsik Lake
- Two DEW line sites are already done with cleanup.
- All areas where we marked before, it's all summer & winter where we hunt. Caribou, fish, seals, narwhales, polar bears, ducks.





Designations	Permitted Uses	Prohibited Uses
XP01	Tourism, Recreation, Research	All Other Uses
XP02	Tourism, Recreation, Research	All Other Uses
XP03	Tourism, Recreation, Research, Marine Infrastructure, Marine Communications and Electrical Cables	All Other Uses

PSE Recommendation

Reference Table for Recommendations

Project Proposals located in a Key Bird Habitat. The should take into account impacts on the migratory birds that fly on the area.

Project Proposals located in historic caribou calving grounds should take into account impacts on caribou calving, good calving area and migration routes.

Project Proposals located in historic caribou calving grounds should take into account impacts that may impact the ability of caribou to cross the area.

Project Proposals located in portions of the Great Bear Lake watershed in Nunavut should take into account transboundary impacts that may impact the conservation value of the watershed.

Code	Comments
XP01	Caribou migrating from this area, this is where they go in the summer.
XP02	Caribou migration route in the Spring. They start migrating in April and start going south in the Fall.
XP03	Polar bear den in this area
XP04	Polar bear denning area including all the islands inside the circle too.
XP05	Migratory bird area. Lots of eggs in this area and birds nest here (Shepherd Bay area)
XP06	Lots of snow around this area and its where polar bears den, including all the islands inside.
XP07	Kellet River, lots of arctic char in this area.
XP08	Important area for char.
XP09	Lake where char is caught.
XP10	Close to this area is where we fish for Char
XP11	Char fishing along the shore
XP12	Islands where polar bears den
XP13	Polar bear denning area
XP14	Good resource for hunting and fishing
XP15	Fishing area for char.
XP16	Various lakes in this area where lake trout is caught

1	21
2	22
3	23
4	24
5	25
6	26
7	27
8	28
9	29
10	30

Signature of Mapper:

CONFIDENTIALITY STAMP



Coordinate System: EPSG 42304 UCC  
Projection: Lambert Conformal Conic  
Datum: North American 1983  
False Easting: 0.0000  
False Northing: 0.0000  
Central Meridian: -95.0000  
Standard Parallel 1: 49.0000  
Standard Parallel 2: 77.0000  
Latitude Of Origin: 49.0000  
Units: Meter

Working Draft Sub-regional map data sources:  
For Land Use Designations and Recommendations sources see Draft Nunavut Land Use Plan and background information data source documents.  
Hatchwork created by utilizing Swis method in Hatchwork toolbox courtesy of ESR user forum water bodies created by merging all 1:250,000 WTS boundaries in Nunavut, version 2.0, and selecting all waterbodies over 50 hectares in size. Land outside of Nunavut, courtesy of Geogratis. Administrative boundaries consist of NPC draft regional boundaries, created to reflect Regional Inuit Association jurisdictions, combined with municipal boundaries, provided by Natural Resources Canada cadastrol data. Multi-Owned Lands courtesy of Nunavut Territorial Inuit Association. Territorial parts from the Government of Nunavut, National Parks from Parks Canada. Data for areas within municipal boundaries obtained from Natural Resources Canada cadastrol data.  
This map is to be used for reference purposes only by the NPC.  
Any further use of this map or data therein must be authorized by contacting the Nunavut Planning Commission at (867) 983-4625 or email nrc@nrc.nunavut.ca  
Hussey, March 10, 2014



### Kugaaruk – Group 2 Results



Code	Comments
XP01	When fish are going to sea in summer, Arctic char abundance. This area is important for future generations. Commercial fishery here. We do not want it developed. Protected
XP02	When fish are going upstream this area most important, July and August. Has Halliq River where Char run up. Polar Bear denning, also caribou. We do not want it developed. Protected
XP03	That river we fish all year has char, they go up to spawn. Amended area to include area with char when they go caribou hunting. We do not want it developed. Protected
XP04	Also important area for fishing all year long. We do not want it developed. Protected
XP05	This river in July and August for fishing. Commercial fishery here. We do not want it developed. Protected
XP06	Arctic Char abundance. We do not want it developed. Protected
XP07	Tinikpayuk River - When going up river - Arctic Char - July, August abundance. Commercial Fishery here. We do not want it developed. Protected
XP08	Kugaaruk River - Arctic Char. We do not want it developed. Protected
XP09	Has fish weir but when they get enough fish they take up weir to let them spawn. We do not want it developed. Protected
XP10	Caribou migration and Polar Bear denning
XP11	Polar Bear area where they roam, where we go hunting
XP12	Arctic Char abundance. Commercial fishery here.
XP13	Caribou migration route. In winter time the caribou move up and Spring time the caribou move down.

**2007** *Entrepreneur*  
National Planning Commission  
Commission d'Éntréplanement Au Québec

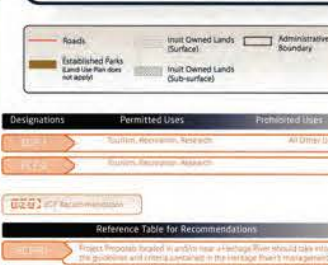
Working Draft: Sub-regional map data and background information for the National Wetlands Inventory. This map is not for publication and is not to be distributed outside the source agency.

Wetlands created by utilizing Swiss cattle trail in riparian habitat study area of CTR- case towns border created by merging all 1:250,000 scale 7.5' quadrangles in Ruminant, version 2.0.2 and vectorized into 1:250,000 scale 7.5' quadrangles. The map shows the wetlands in the study area, which are located on 100 hectares in the land outside of National, clearing of Quaternary. Administrative boundaries (except for the regional boundaries, created to reflect Regional land Association participants, controlled with map data, provided by National Resource Council, version 2.0.2) are shown in the map. The map is a European/International. Territorial parts from the Government of National, National Parks (Federal Council of Switzerland) are shown in the map. The map is a European/International. Territorial parts from the Government of National, National Parks (Federal Council of Switzerland) are shown in the map.

Data for areas within municipal boundaries collected from the National Resource Council (Federal Council of Switzerland) are shown in the map. The map is a European/International. Territorial parts from the Government of National, National Parks (Federal Council of Switzerland) are shown in the map.

Any further use of this map is to be done through our agency by contacting the National Park Commission at 3657/303-46215 in small municipalities.





Code	Comments
XC17	Around this area there are a lot of historical sites and old camps
XC18	Historical houses/sod houses along the shore
XC19	Islands named Kiyuk (sp) has archeological sites along the shore
XC20	Spring camps here

*Municipal Planning Commission*  
*Demonstrates Satisfaction That*  
*LAMC Has Mapping Session*

---

Community:	_____
Location:	_____
Region:	_____
Date:	_____
Community #/of:	_____/____
Map#:	_____

Signatures of the Community signify its permission  
to conduct mapping session as follows.

1.	_____	16.	_____
2.	_____	17.	_____
3.	_____	18.	_____
4.	_____	19.	_____
5.	_____	20.	_____
6.	_____	21.	_____
7.	_____	22.	_____
8.	_____	23.	_____
9.	_____	24.	_____
10.	_____	25.	_____
11.	_____	26.	_____
12.	_____	27.	_____
13.	_____	28.	_____
14.	_____	29.	_____
15.	_____	30.	_____

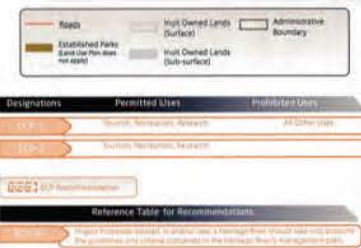
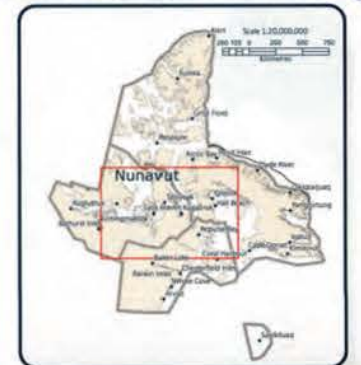
Signature of Mapper: \_\_\_\_\_

Knowledge Level	Percentage of Respondents
40	40%
20	20%
0	0%
40	40%
90	90%


 Coordinate System: EPSG 423  
 Projection: Lambert Conformal  
 Datum: North American 1983  
 False Easting: 0.0000  
 False Northing: 0.0000  
 Central Meridian: -95.0000  
 Standard Parallel 1: 49.0000  
 Standard Parallel 2: 77.0000  
 Latitude Of Origin: 49.0000  
 Units: Meter

Working Draft-Sub-regional map  
For Land Use Designations and Recommendations sources see draft Nunavut Land Use Plan and  
draft Nunavut Land Use Designations and Recommendations sources see draft Nunavut Land Use Plan and  
Hillsblake created by utilizing Swiss Francs in Hillsblake topography of ESRU user Nunavut  
created by merging all 1,250,000 WTB shapes in Nunavut, version 2.0 and selecting all  
50 hectares in size, land outside of Nunavut, courtesy of Geographic Administrative boundaries of  
draft regional boundaries, created to reflect Regional Unit Association jurisdictions, combined  
data, provided by Natural Resources Canada (categorical data, input) Owned Lands sources  
Tunngavik incorporated, territorial parcels from the Government of Nunavut, National Parks from  
Data for areas within municipal boundaries obtained from the Government of Nunavut  
This map is to be used for reference purposes only  
Any further use of this map or data therein must be authorized by contacting the Nunavut  
Commission at (867) 969-4625 or email [munro@nunavut.ca](mailto:munro@nunavut.ca)





Code	Comments
XC14	Nesting ground for Sandhill cranes, canada geese, eider, and any kind of birds.
XC15	Nesting ground for Sandhill cranes, canada geese, eider, and any kind of birds. Less abundance of canada geese than XC14. Went here as a child in summer, we used to walk here, no transportation.
XC16	Two rivers for Arctic Char
XC17	Area where they were looking at making a territorial park

A blank sheet of white paper with horizontal blue ruling lines. The lines are evenly spaced and run across the width of the page. There is a vertical margin line on the left side, creating a narrow left margin. The paper appears to be from a notebook or a standard sheet of stationery.

**Student Funding Committee**  
Community Development Team  
Local Education Services

Community: KANSAS  
Location: Community Hall  
Region: KANSAS  
Date: MARCH 18, 2001  
Community #/ID: \_\_\_\_\_  
Mag # 3085

**CONFIDENTIAL**  
C05672746734  
Regional Planning Commission  
4-27-2001

**Signatures of the Community** sign by as permission  
 from the author in spring, season as before winter.

1.	_____	16.	_____
2.	_____	17.	_____
3.	_____	18.	_____
4.	_____	19.	_____
5.	_____	20.	_____
6.	_____	21.	_____
7.	_____	22.	_____
8.	_____	23.	_____
9.	_____	24.	_____
10.	_____	25.	_____
11.	_____	26.	_____
12.	_____	27.	_____
13.	_____	28.	_____
14.	_____	29.	_____
15.	_____	30.	_____


Signature of Mapper: *[Signature]*

1000 bp

100 bp

50 bp

overlap region


 Coordinate System: EPSG:42304 LCC  
 Projection: Lambert Conformal Conic  
 Datum: North American 1983  
 False Easting: 0.0000  
 False Northing: 0.0000  
 Central Meridian: -95.0000  
 Standard Parallel 1: 49.0000  
 Standard Parallel 2: 77.0000  
 Latitude Of Origin: 49.0000  
 Units: Meter

[illegible]





0220 BIC Recommendation	
<b>0220-01</b>	<b>Reference Table for Recommendations</b>
<b>0220-02</b>	Project Proposals located in the Houston River area of interest should take into account impacts on the quality of the area of interest.
<b>0220-03</b>	Project Proposals located in the area of interest and/or use should take into account impacts on the cultural value of the area.
<b>0220-04</b>	Project Proposals located in a community water supply watershed should take into account impacts on the quality and quantity of community drinking water.
<b>0220-05</b>	Project Proposals located in a municipal floodplain should take into account impacts on floodplain safety.

Worksheet 10: Survey of Communities  
 Worksheet 10: Survey of Communities  
 (Worksheet 10: Survey of Communities)

Community: \_\_\_\_\_

Location: \_\_\_\_\_

Region: \_\_\_\_\_

Community Size: \_\_\_\_\_

Map # \_\_\_\_\_

**Signatures of the Community sign-off in permission form to be placed in aging section as information.**

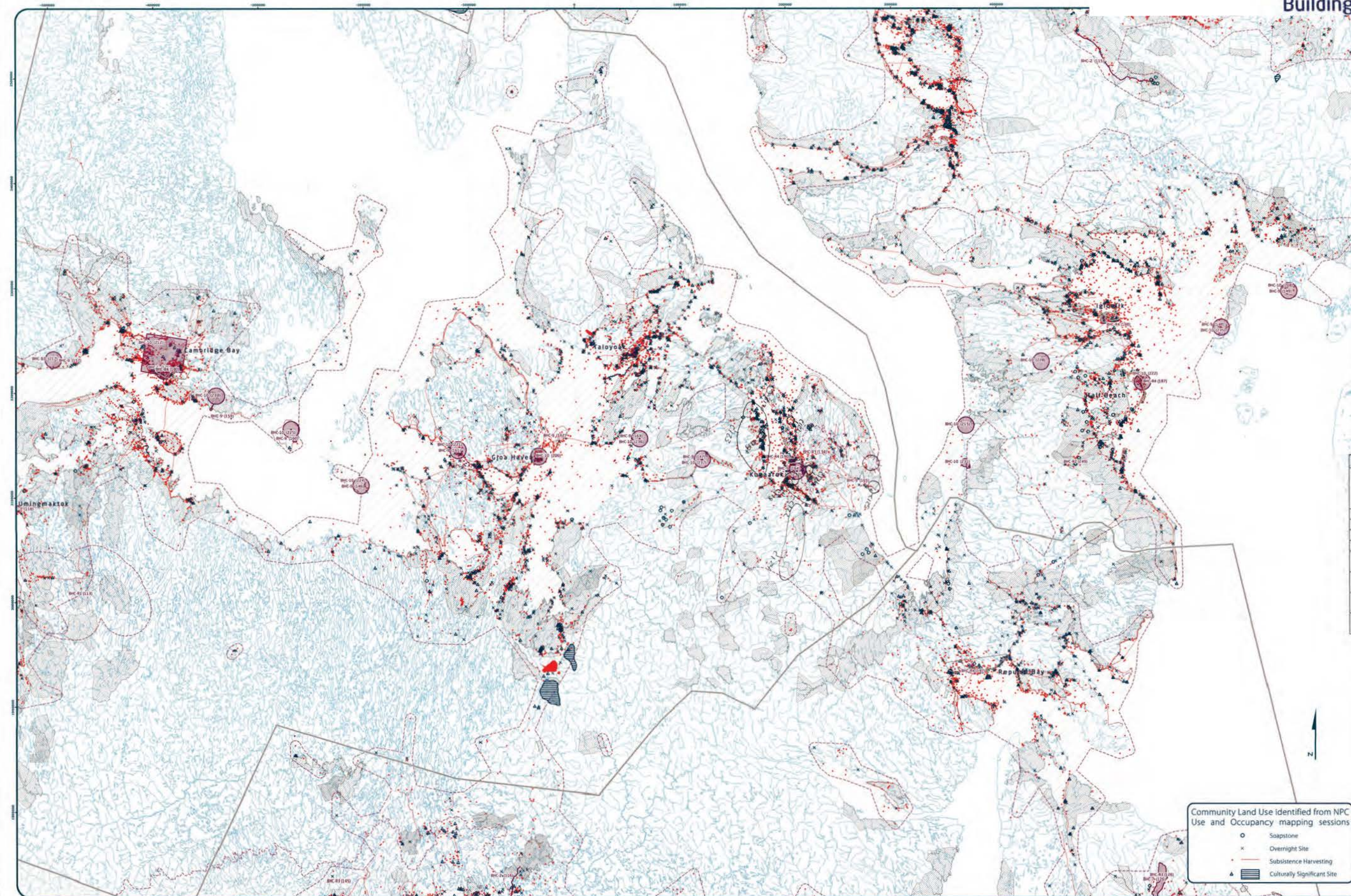
1. _____	16. _____
2. _____	17. _____
3. _____	18. _____
4. _____	19. _____
5. _____	20. _____
6. _____	21. _____
7. _____	22. _____
8. _____	23. _____
9. _____	24. _____
10. _____	25. _____
11. _____	26. _____
12. _____	27. _____
13. _____	28. _____
14. _____	29. _____
15. _____	30. _____

Signature of Mapper: \_\_\_\_\_

[illegible]



A map of Nunavut, Canada, showing its location within the Arctic region. The map includes major cities like Inuitavut, Iqaluit, and Rankin Inlet, and is labeled with 'Nunavut' in a red box.



 Route  
 (Established Parks) Land Use Plan does not apply  
 Multi-Owned Lands (Surface)  
 Multi-Owned Lands (Sub-surface)  
 Administrative Boundary

Geographies	Permitted Uses	Prohibited Uses
Class 1	Roads, Railways, Utilities and Canals	
Class 2	Roads, Railways, Utilities and Canals	
Class 3	All uses except those Prohibited	Mining
Class 4	Hydro electric and related infrastructure	
Class 5	Source, Storage and Reservoir, Municipal Services	
Class 6	Municipal Services	All Other Uses
Class 7	Municipal Services	
Class 8	Remediation and Reclamation Activities	All Other Uses
Class 9	Remediation and Reclamation Activities, DND Operations and Activities	All Other Uses
Class 10	DND Operations and Activities	All Other Uses

Reference Table for Recommendations	
REC-1	Project Proposals located in the Hualapai River Area of Interest should take account impacts on the cultural value of the area.
REC-2	Project Proposals located in areas of traditional land use should take into account impacts on the cultural value of the area.
REC-3	Project Proposals located in a community water watershed should take into account impacts on the quality and quantity of community drinking water.
REC-4	Project Proposals located in a Municipal Airshed should take into account impacts on the quality and quantity of community drinking water.

Code	Comments
C118	Area of cabins at the mouth of river. Hunting area. Fishing area, abundance of fish. Want to see protected. This is where I was raised
C119	Cabin area
C120	Cabin area
C121	Cabin area
C122	Cabin area, sacred area, fishing area
C123	Cabin area for seal, fishing and caribou hunting
C124	Used to be area of fishing during summer but still used in winter.
C125	Dewline site Cam-E, contaminated area but getting cleaned up.
C126	People shouldn't be alone here. Sacred area behind Dewline site.

**Confidential**

**CONFIDENTIAL**

Signature of \_\_\_\_\_  
Date \_\_\_\_\_  
Community PNP \_\_\_\_\_  
\_\_\_\_\_

Signature of Community Health & Assessment  
Nurse or District Mapping Section as Interviewer

1. \_\_\_\_\_  
2. \_\_\_\_\_  
3. \_\_\_\_\_  
4. \_\_\_\_\_  
5. \_\_\_\_\_  
6. \_\_\_\_\_  
7. \_\_\_\_\_  
8. \_\_\_\_\_  
9. \_\_\_\_\_  
10. \_\_\_\_\_  
11. \_\_\_\_\_  
12. \_\_\_\_\_  
13. \_\_\_\_\_  
14. \_\_\_\_\_  
15. \_\_\_\_\_

16. \_\_\_\_\_  
17. \_\_\_\_\_  
18. \_\_\_\_\_  
19. \_\_\_\_\_  
20. \_\_\_\_\_  
21. \_\_\_\_\_  
22. \_\_\_\_\_  
23. \_\_\_\_\_  
24. \_\_\_\_\_  
25. \_\_\_\_\_  
26. \_\_\_\_\_  
27. \_\_\_\_\_  
28. \_\_\_\_\_  
29. \_\_\_\_\_  
30. \_\_\_\_\_

Signature of Mapper \_\_\_\_\_  
Date \_\_\_\_\_

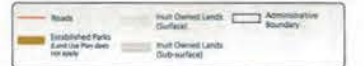
Community Land Use identified from NPC Use and Occupancy mapping sessions

- Soapstone
- x Overnight Site
- Subsistence Harvesting
- ▲ Culturally Significant Site

**Coordinate System:** EPSG:4230  
**Projection:** Lambert Conformal  
**Datum:** North American 1983  
**False Easting:** 0.0000  
**False Northing:** 0.0000  
**Central Meridian:** -85.0000  
**Standard Parallel 1:** 49.0000  
**Standard Parallel 2:** 72.0000  
**Latitude Of Origin:** 49.0000  
**Units:** Meter

Use and Occupancy data from NRCU and US Census mapping were used to estimate the number of people living in the 50-acre parcels. The parcels were then ranked by population density. The parcels with the highest population density were selected for the study. The parcels were then ranked by population density. The parcels with the highest population density were selected for the study.





Code	Comments
XD26	Commercial fishing potential in this area.
XD27	Keller River area – do not want this area for commercial fishing because the community fishes in this area and don't want it over fished.
XD28	Potential for turbot fishing in this area.

Research Planning Grant Dates  
Covered by Research Grant Dates  
(Add for Missing months)

Community \_\_\_\_\_  
Location \_\_\_\_\_  
Region \_\_\_\_\_  
Date \_\_\_\_\_  
Community Title \_\_\_\_\_  
Page # \_\_\_\_\_

Signatures of the Community apply as permission

Signature of Mapper:

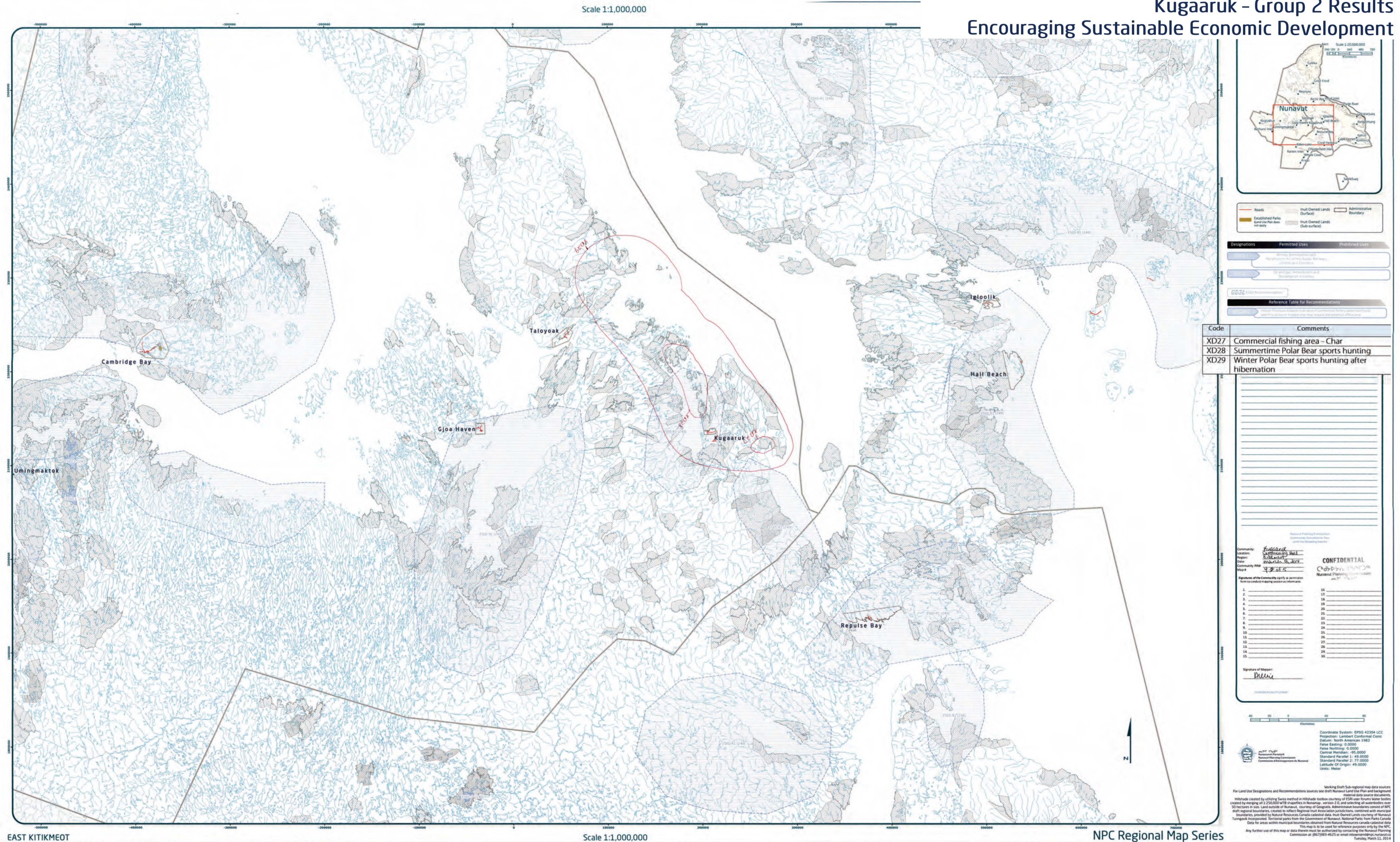


This map is to be used for reference purposes only by the NRC.  
Any further use of this map or data therein must be authorized by contacting the Nunavut Planning  
Commission at (867) 960-4625 or email [nrcnw@ndp.gc.ca](mailto:nrcnw@ndp.gc.ca)  
Friday, November 29, 2013



## Kugaaruk – Group 2 Results

### Encouraging Sustainable Economic Development





A map of Nunavut, Canada, showing major towns and geographical features. A red rectangle highlights the central region. The map includes a scale bar (0 to 150 km) and a north arrow.



Code	Comments
MU29	Muskox hunting in this area. Muskox don't migrate, they stay in one area not like caribou.

[illegible]

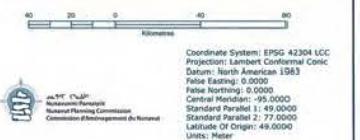
**Appendix B Planning Document**  
**Community Development Plan**  
**Local Tax Funding Allocation**

Community: \_\_\_\_\_  
 Location: \_\_\_\_\_  
 Region: \_\_\_\_\_  
 Date: \_\_\_\_\_  
 Community ID#: \_\_\_\_\_  
 Map # \_\_\_\_\_

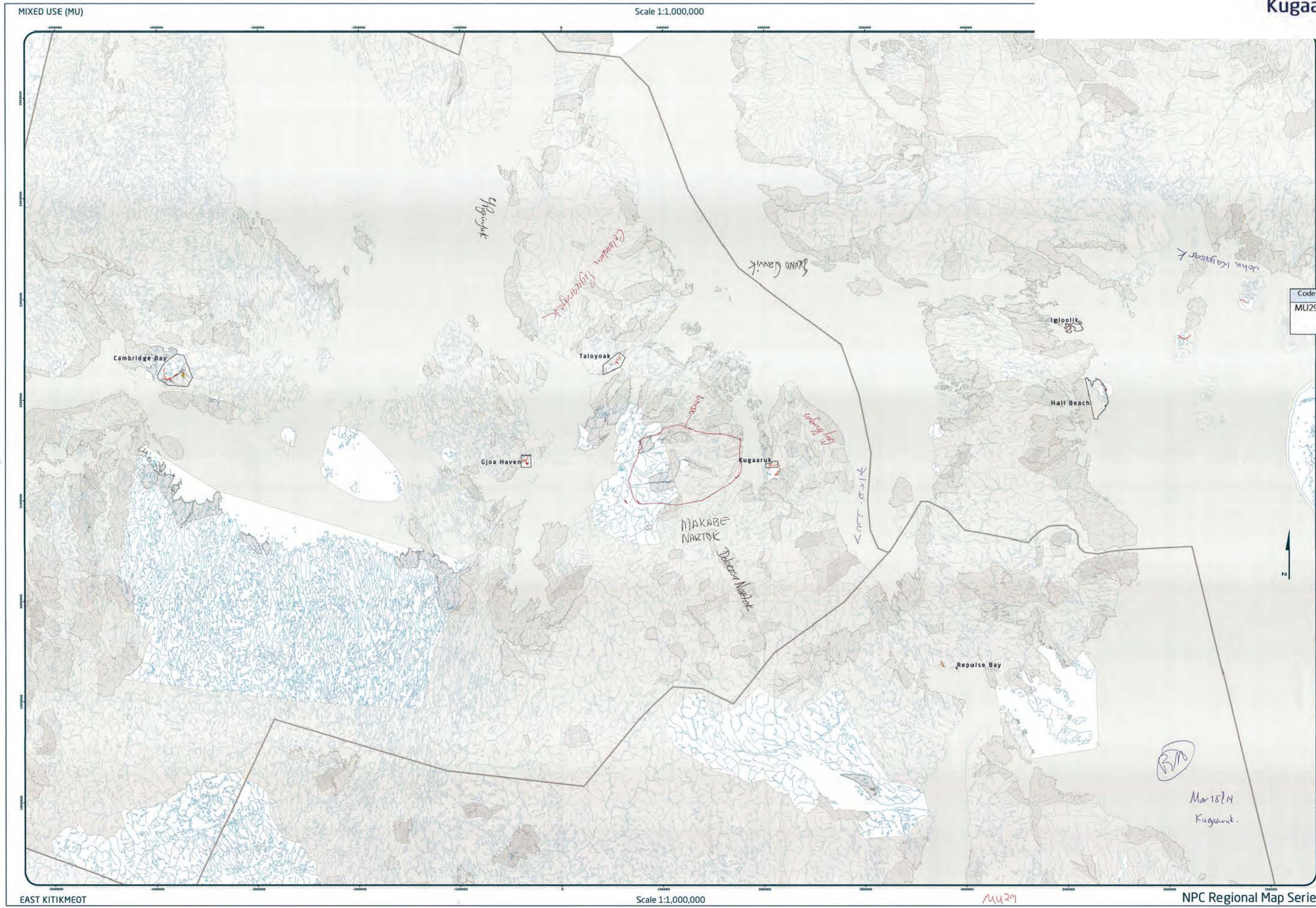
**Signatures of the Community sign-off on permission**  
 Turn to Exhibit Planning section on information.

1.	16.
2.	17.
3.	18.
4.	19.
5.	20.
6.	21.
7.	22.
8.	23.
9.	24.
10.	25.
11.	26.
12.	27.
13.	28.
14.	29.
15.	30.

Signature of Mayor: \_\_\_\_\_



Working Draft Sub-regional map data sources  
Land Use Designations and Recommendations sources see draft Nunavut Land Use Plan and background  
information for the Nunavut Land Use Planning Act and Nunavut Land Use Planning Regulations  
Ithaca created by utilizing Swiss method in Hikitoolbox toolbox of ESRI user forums water bodies  
by merging all 1:250,000 WT6 sheets in Nunavut, version 2.0, and selecting all waterbodies over  
watersheds in use. Land outside of Nunavut, covering all of Canada, is shown in grey. The NLC  
regional boundaries, created by the respective Regional Trust Association jurisdictions, combined with watersheds  
provided by Natural Resources Canada (Government of Canada), Inuit Owned Lands (courtesy of Nunavut  
Inuit Government), Territorial Parks from the Department of National Parks, from Parks Canada  
for areas within municipal boundaries. This map is to be used for reference purposes only by the NLC.  
Any further use of this map or data therein must be authorized by contacting the Nunavut Planning  
Commission at: (867)793-6625 or email: [npcomm@nunavut.ca](mailto:npcomm@nunavut.ca)  
Friday, November 28, 2013










Scale 1:1,000,000

NPC Regional Map Series



Designations	Permitted Uses	Prohibited Uses
		
Code	Comments	
MU30	Drinking water even in winter. Attaniq & I	
MU31	Qutailuryuaq - Drinking water year round.	
MU32	For drinking water, in summertime a stream coming from mountain, 3 miles along Dewline road.	

This is a blank sheet of white paper with horizontal blue or grey ruling lines. The lines are evenly spaced and run across the width of the page. There are no margins, text, or other markings on the paper.

General Winning & Promotional  
Sweepstakes Ends 12/31/2009

Community: Huganek  
Location: Community Ward  
Region: Richland  
Date: March 18, 2004  
Community Plan: SECS

**CONFIDENTIAL**  
C:\d\p\l\q\647\04  
National Planning Commission  
m. p. 2/20/04

Signatures of the Community signify its permission  
to use a product mapping service as follows:

- |     |    |
|-----|----|
| 1.  | 16 |
| 2.  | 17 |
| 3.  | 18 |
| 4.  | 18 |
| 5.  | 20 |
| 6.  | 21 |
| 7.  | 22 |
| 8.  | 23 |
| 9.  | 24 |
| 10. | 25 |
| 11. | 26 |
| 12. | 27 |
| 13. | 28 |
| 14. | 29 |
| 15. | 30 |

Signature of Mapper: Boyle

202009090122111-10-0000




 NPS Logo  
 National Planning Commission  
 Estimation of Geographical Information

Links: Master

Working Draft – not regional map data source  
For Land Use Designations and Recommendations: Sources are: Natural Resources Canada and background  
information from the Natural Resources Canada website  
municipal created by using GIS methods in a Hydrologic sub-catchment of ESRI user services water bodies  
created by merging all 1:50,000 scale hydrographic maps in Nunavut, version 2.0, and selecting all waterbodies over  
the hydrographic map. Land outside of Nunavut, including the Northwest Territories and Yukon, is not included  
in regional boundaries, created to reflect Natural Resources Canada jurisdictional limits, combined with municipal  
boundaries provided by Natural Resources Canada cadastral data, from owned lands country of Nunavut  
and Inuvialuit, Northwest Territories and Nunavut  
Data for areas within municipal boundaries obtained from Natural Resources Canada cadastral data  
This map is to be used for reference purposes only by the NRC  
Any further use of this map or data requires written permission from the  
Commissioner at (867) 939-6825 or email [enr@enr.nunavut.ca](mailto:enr@enr.nunavut.ca)  
Wednesday March 22, 2017



## Appendix 5: Follow-up Meeting

The NPC returned to the community and reviewed a draft version of this report with the Hamlet Council, Hunters and Trappers Organization, and the Community Beneficiary Committee. The meeting included:

- A presentation of a draft version of this report
- An overview of the mapped information that was recorded for each topic:
  - Protecting and Sustaining the Environment
  - Encouraging Conservation Planning
  - Building Healthier Communities
  - Encouraging Sustainable Economic Development
  - Mixed Use
- General discussion and comments including:
  - Opportunities to provide additional comments.
  - How the plan can manage land use