

# Summary of Community Meetings on the Draft Nunavut Land Use Plan

TALOYOAK

March 20-21, 2014



Nunavut Planning  
Commission



Revised - May 2014



# Contents

Introduction .....	3	Appendix 1: Open House .....	17
1.1 Context .....	3	Appendix 2: Elected Officials Meeting.....	18
1.2 Purpose.....	3	Appendix 3: Questions and Answers .....	19
1.3 Methodology.....	3	Appendix 4: Community Workshop Scanned Maps.....	20
1.4 Public Awareness .....	3	Appendix 5: Follow-up Meeting.....	31
1.5 Community Population and Participation.....	3		
 Protecting and Sustaining the Environment.....	4		
2.1 Areas presented to participants.....	4		
2.2 Areas identified by participants .....	4		
2.3 Areas of importance to Protecting and Sustaining the Environment..	4		
 Encouraging Conservation Planning.....	6		
3.1 Areas presented to participants .....	6		
3.2 Areas identified by participants .....	6		
3.3 Areas of importance to Encouraging Conservation Planning .....	6		
 Building Healthier Communities .....	8		
4.1 Areas presented to participants.....	8		
4.2 Areas identified by participants.....	8		
4.3 Areas of importance to Building Healthier Communities .....	8		
 Encouraging Sustainable Economic Development .....	10		
5.1 Areas presented to participants.....	10		
5.2 Areas identified by participants.....	10		
5.3 Areas of importance to Encouraging Sustainable Economic Development .....	10		
 Mixed Use.....	12		
6.1 Areas identified in the Draft Plan .....	12		
6.2 Areas identified by participants.....	12		
 Overlapping Goals .....	15		
7.1 Areas identified for multiple goals .....	15		

## 1.1 Context

The Nunavut Planning Commission (NPC) is preparing a land use plan to guide and direct resource use and development in the Nunavut Settlement Area (NSA). As part of its efforts, the NPC is facilitating discussions in each Nunavut community on land use and resource management issues. Information that is obtained from these discussions will be used to inform decisions regarding the further development of the Nunavut Land Use Plan (NLUP).

## 1.2 Purpose

This report presents information obtained during the NPC's visit to the community of Taloyoak. The purpose of the report is to inform decisions regarding the further development of the NLUP, ensuring that the plan reflects the priorities and values of residents.

It is important to note that the information contained in the Community Report will be considered in conjunction with all other feedback when revising the DNLUP.

## 1.3 Methodology

Information was presented to and received from participants in Taloyoak in accordance with the Nunavut Planning Commission's Community Engagement Strategy (Engagement Strategy). The Engagement Strategy provides for the following methods for presenting and receiving information;

- **Open house;** information contained in the Draft Nunavut Land Use Plan (DNLUP) was presented on 7 multi lingual large format poster boards. Participants were encouraged to review the posters, ask questions and provide feedback. Comments and questions were recorded by NPC staff and are contained in Appendix 1.
- **Elected Officials Meeting;** The NPC Chairperson and NPC staff met with senior and elected officials in the community. The development process for the DNLUP, its content and next steps were presented.

Comments and questions were recorded during the session and are contained in Appendix 2.

- **Public Workshop;** A formal presentation of the Draft Plan content was provided to participants, including a slide overview of its content. Following the presentation, questions and comments were received from participants. The questions, comments and responses are contained in Appendix 3.

A mapping session followed the presentation of the Draft Plan. The mapping session involved discussions regarding the topics presented in the DNLUP and encouraged participants to identify additional areas and issues important for inclusion in a NLUP. Information received during this session was recorded by NPC staff and is included in Appendix 4.

- **Wrap Up Session;** Staff was available to discuss the areas identified during the mapping and identify any additional issues or areas of interest.

Areas that participants identified during mapping sessions as important to a particular goal have, in the majority of cases, been included in this report as they were recorded. In instances where participants identified an area that was better suited to another goal, the area has been reclassified to the more suitable goal and has been verified as appropriate to do so by the Community.

A follow-up meeting was held on May 8, 2014 to review a draft version of this report with the Hamlet Council, Hunters and Trappers Organization, and Community Beneficiary Committee. A summary of this meeting is included in Appendix 5.

## 1.4 Public Awareness

The NPC raised public awareness regarding its visit to Taloyoak in accordance with the Engagement Strategy.

The DNLUP and supporting materials were mailed to the Mayor and Council of Taloyoak, and the Hunters and Trappers Organization (HTO) in September 2012. In addition, letters of invitation were sent to the Taloyoak Mayor and Council and

HTO in advance of the NPC's visit to advise of the meetings and to encourage participation. Follow up phone calls were also made.

Public notice of the various events was provided in the following ways:

- **Nunatsiaq News and Nunavut News/North;** notice of community meetings were posted in both newspapers a minimum of 45 days in advance.
- **Co-op cable TV;** notice of community meetings was run a minimum of 45 days in advance for one week and run again for no less than 14 days before the meetings.
- **Community radio;** notices were read by the hosts and a live interview with the Commission Chairperson was conducted.
- **Community bulletin boards;** notices were posted on bulletin boards around the community 45 days and again 14 days in advance of the meetings.
- **Community mail drop;** one page flyers that announced the meetings and their purpose were delivered to the post office in each community for all mail boxes that accept unaddressed ad-mail.
- **nunavut.ca;** the schedule of community visits, the Draft Plan, and all supporting information was available on the Commission's website.

## 1.5 Community Population and Participation

Taloyoak is a community of approximately 900 people (Statistics Canada, 2011 Census). It is located on the Boothia Peninsula (see Figure 1).

The Commission visited the community on March 20-21, 2014. All events occurred as scheduled. The sessions were attended as follows;

- **Elected Officials Meeting;** the Mayor and members of the Hamlet Council and HTO attended the elected officials meeting.
- **Open house;** approximately 5 people attended the open house to review the Draft Plan.
- **Public Workshop;** approximately 55 people attended the presentation of the DNLUP and facilitated mapping sessions. Information was recorded in two separate mapping groups.
- **Wrap Up Session;** 0 people attended the wrap up session.



Figure 1. Location of Taloyoak

# Chapter 2: Protecting and Sustaining the Environment

Protecting and Sustaining the Environment was one of five topics presented to and discussed by participants during the Open House, Elected Officials Meeting, Public Workshop and Wrap up Session, collectively referred to in this document as information sharing and gathering sessions.

## 2.1 Areas presented to participants

During the information sharing and gathering sessions, participants were presented the following areas and issues as important to Protecting and Sustaining the Environment.

- Key bird habitat sites
- Caribou Habitat sites
- Atlantic Cod Lakes
- Cumulative Impacts
- Transboundary considerations
- Climate change

The importance of these issues and areas to Protecting and Sustaining the Environment was not disputed by participants during the information sharing and gathering sessions.

## 2.2 Areas identified by participants

Additional areas and issues were identified by participants as important to Protecting and Sustaining the Environment during the information sharing and gathering sessions. These additional areas are;

- Hunting and fishing areas
- Caribou habitat
- Whale habitat
- Seal habitat
- Bird habitat

- Fish habitat
- Muskox habitat

## 2.3 Areas of importance to Protecting and Sustaining the Environment

Areas and issues discussed during the information sharing and gathering sessions as important to Protecting and Sustaining the Environment are illustrated on Map 1, including areas identified in the DNLUP and areas identified by the community. Scanned images of the maps on which community feedback was recorded can be found in Appendix 4.

Based on discussions with participants, the NPC understands that:

- The areas identified on Map 1 are considered by the Community to be important to Protecting and Sustaining the Environment.
- In these areas, the community would like the NLUP to encourage activities that support environmental protection and management needs, including wildlife conservation, protection and management.

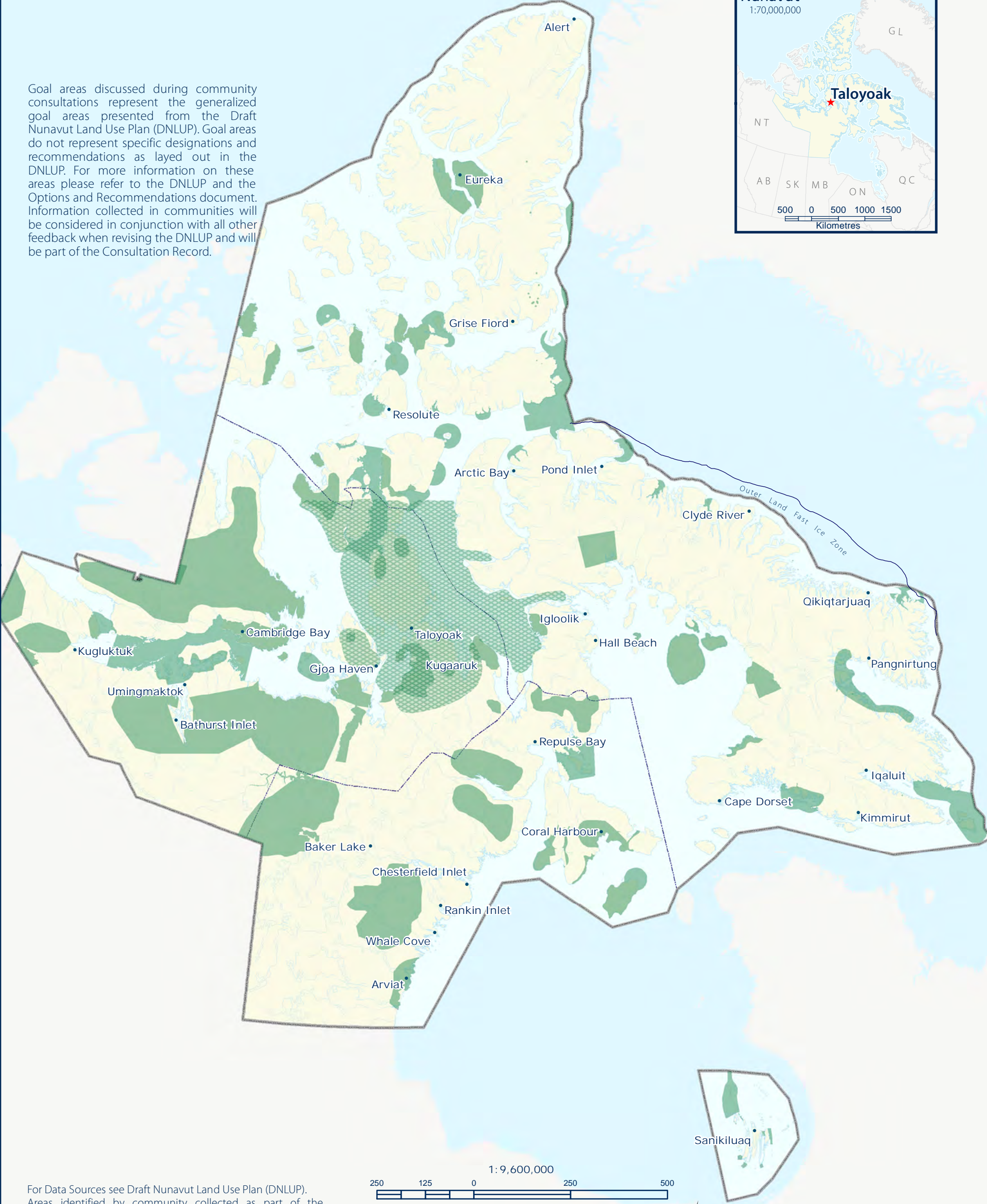
This feedback will be considered in conjunction with all other feedback when revising the DNLUP.



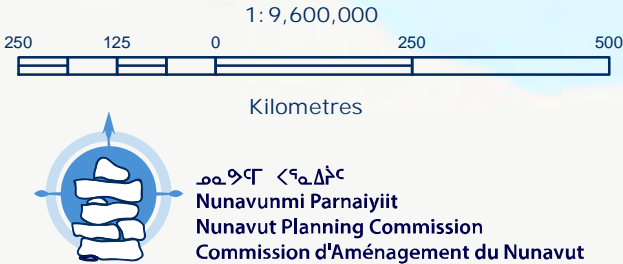


- PSE Goal areas from the DNLUP discussed during community consultations
- Additional PSE Goal areas identified during community consultations

Goal areas discussed during community consultations represent the generalized goal areas presented from the Draft Nunavut Land Use Plan (DNLUP). Goal areas do not represent specific designations and recommendations as layed out in the DNLUP. For more information on these areas please refer to the DNLUP and the Options and Recommendations document. Information collected in communities will be considered in conjunction with all other feedback when revising the DNLUP and will be part of the Consultation Record.



For Data Sources see Draft Nunavut Land Use Plan (DNLUP). Areas identified by community collected as part of the Nunavut Planning Commissions Community Engagement Strategy during the Mapping Sessions for the DNLUP on March 20 & 21, 2014. Maps were digitized at the Nunavut Planning Commission. To be used for illustration purposes only as part of the Draft Nunavut Land Use Plan Consultation Process.



Projection: Canada Lambert Conformal Conic, NAD83  
Produced by the Nunavut Planning Commission: (867)983-4625, npc@nunavut.ca  
May-28-14



## Chapter 3: Encouraging Conservation Planning

Encouraging Conservation Planning was one of five topics presented to and discussed by the participants during the information sharing and gathering sessions.

### 3.1 Areas presented to participants

During the information sharing and gathering sessions, participants were presented the following areas and issues as important to Encouraging Conservation Planning;

- National Parks Awaiting Full Establishment
- Proposed National Parks
- National Marine Conservation Areas
- Thelon Wildlife Sanctuary
- Migratory Bird Sanctuaries
- National Wildlife Areas
- National Historic Sites
- Territorial Historic Sites
- Heritage Rivers

The importance of these issues and areas to Encouraging Conservation Planning was not disputed by participants during the information sharing and gathering sessions.

### 3.2 Areas identified by participants

Additional areas and issues were identified by participants as important to Encouraging Conservation Planning during the information sharing and gathering sessions. These additional areas are.

- Scenic areas with abundant wildlife
- Historic sites
- Hunting and camping areas

### 3.3 Areas of importance to Encouraging Conservation Planning

Areas and issues discussed during the information sharing and gathering sessions as important to Encouraging Conservation Planning are illustrated on Map 2, including areas identified in the DNLUP and areas identified by the community. Scanned images of the maps on which community feedback was recorded can be found in Appendix 4.

Based on discussions with participants, the NPC understands that:

- The areas identified on Map 2 are considered by the Community to be important to Encouraging Conservation Planning.
- In these areas, the community would like the NLUP to encourage activities that support environmental protection and management needs, including wildlife conservation, protection and management.

This feedback will be considered in conjunction with all other feedback when revising the DNLUP.

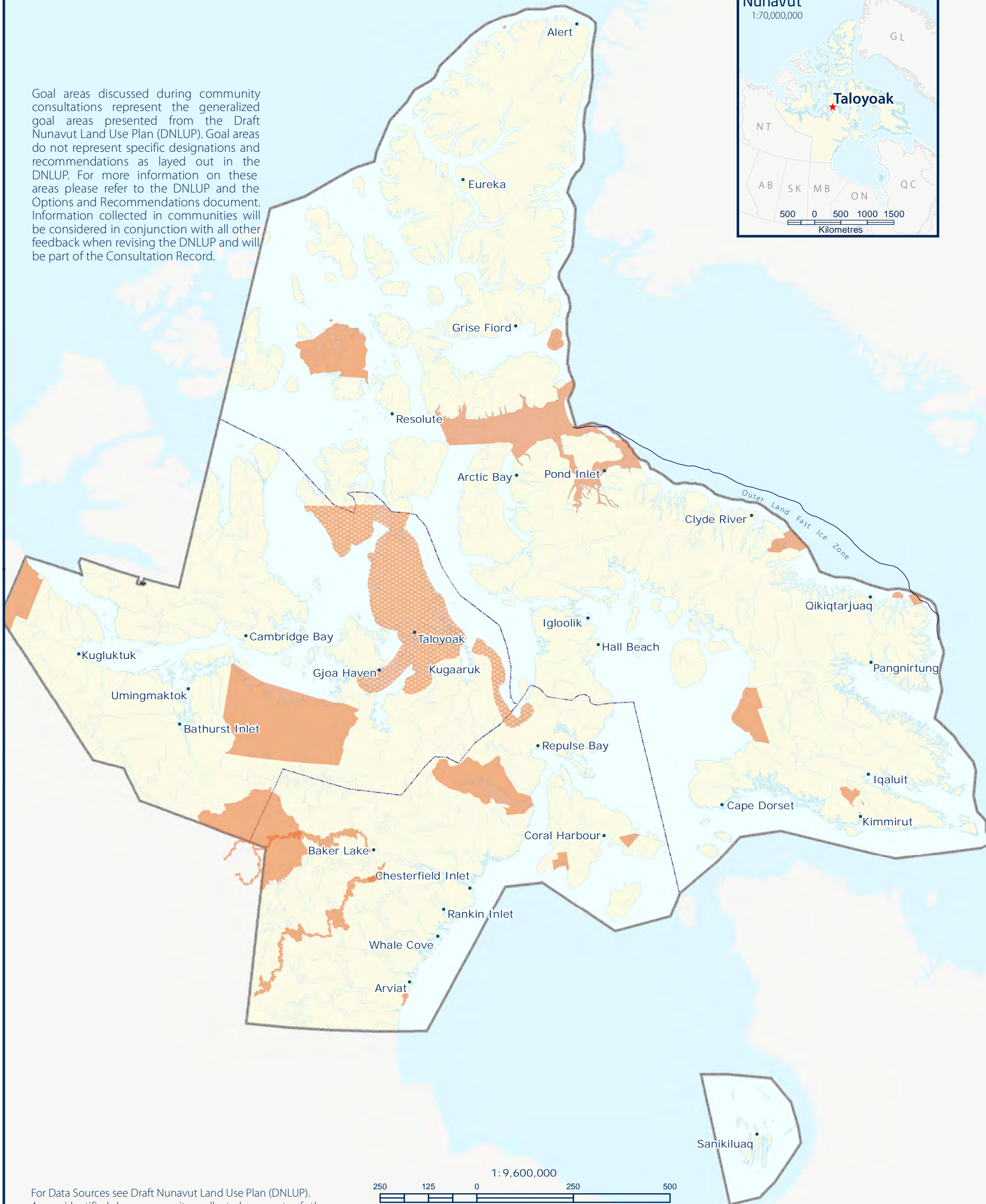




 ECP Goal areas from the DNLUP discussed during community consultations

 Additional ECP Goal areas identified during community consultations

Goal areas discussed during community consultations represent the generalized goal areas presented from the Draft Nunavut Land Use Plan (DNLUP). Goal areas do not represent specific designations and recommendations as layed out in the DNLUP. For more information on these areas please refer to the DNLUP and the Options and Recommendations document. Information collected in communities will be considered in conjunction with all other feedback when revising the DNLUP and will be part of the Consultation Record.

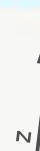


For Data Sources see Draft Nunavut Land Use Plan (DNLUP). Areas identified by community collected as part of the Nunavut Planning Commissions Community Engagement Strategy during the Mapping Sessions for the DNLUP on March 20 & 21, 2014. Maps were digitized at the Nunavut Planning Commission. To be used for illustration purposes only as part of the Draft Nunavut Land Use Plan Consultation Process.

250 125 0 250 500  
1: 9,600,000  
Kilometres



ᓄᓇᓂᓄᓐ ᐸᓐᓇᓂᓄᓐ  
Nunavunmi Parnaiyiit  
Nunavut Planning Commission  
Commission d'Aménagement du Nunavut



Projection: Canada Lambert Conformal  
Conic, NAD83  
Produced by the Nunavut Planning  
Commission: (867)983-4625,  
npc@nunavut.ca  
May-28-14



# Chapter 4: Building Healthier Communities

Building Healthier Communities was one of five topics presented to and discussed by the participants during the information sharing and gathering sessions.

## 4.1 Areas presented to participants

During the information sharing and gathering sessions, participants were presented the following areas and issues as important to Building Healthier Communities;

- Areas of Community Interest
- Community Land Use
- Transportation Infrastructure
- Unincorporated Communities
- Alternative Energy Sources
- Community drinking water supplies
- Land remediation
- Northern Contaminated Sites Program
- Aerodromes
- Canadian Forces Station
- Northern Warning System sites

The importance of these issues and areas to Building Healthier Communities was not disputed by participants.

## 4.2 Areas identified by participants

Additional areas and issues were identified by participants as important to contributing to the goal of Building Healthier Communities during the information sharing and gathering sessions. These additional areas are;

- Wildlife areas

- Drinking water
- Contaminated sites

## 4.3 Areas of importance to Building Healthier Communities

Areas and issues discussed during the information sharing and gathering sessions as important to Building Healthier Communities are illustrated on Map 3, including areas identified in the DNLUP and areas identified by the community. Scanned images of the maps on which community feedback was recorded can be found in Appendix 4.



Based on discussions with participants, the NPC understands that:

- The areas identified on Map 3 are considered by the Community to be important to Building Healthier Communities.
- In these areas, the community would like the NLUP to encourage activities that support community needs and cultural priorities.

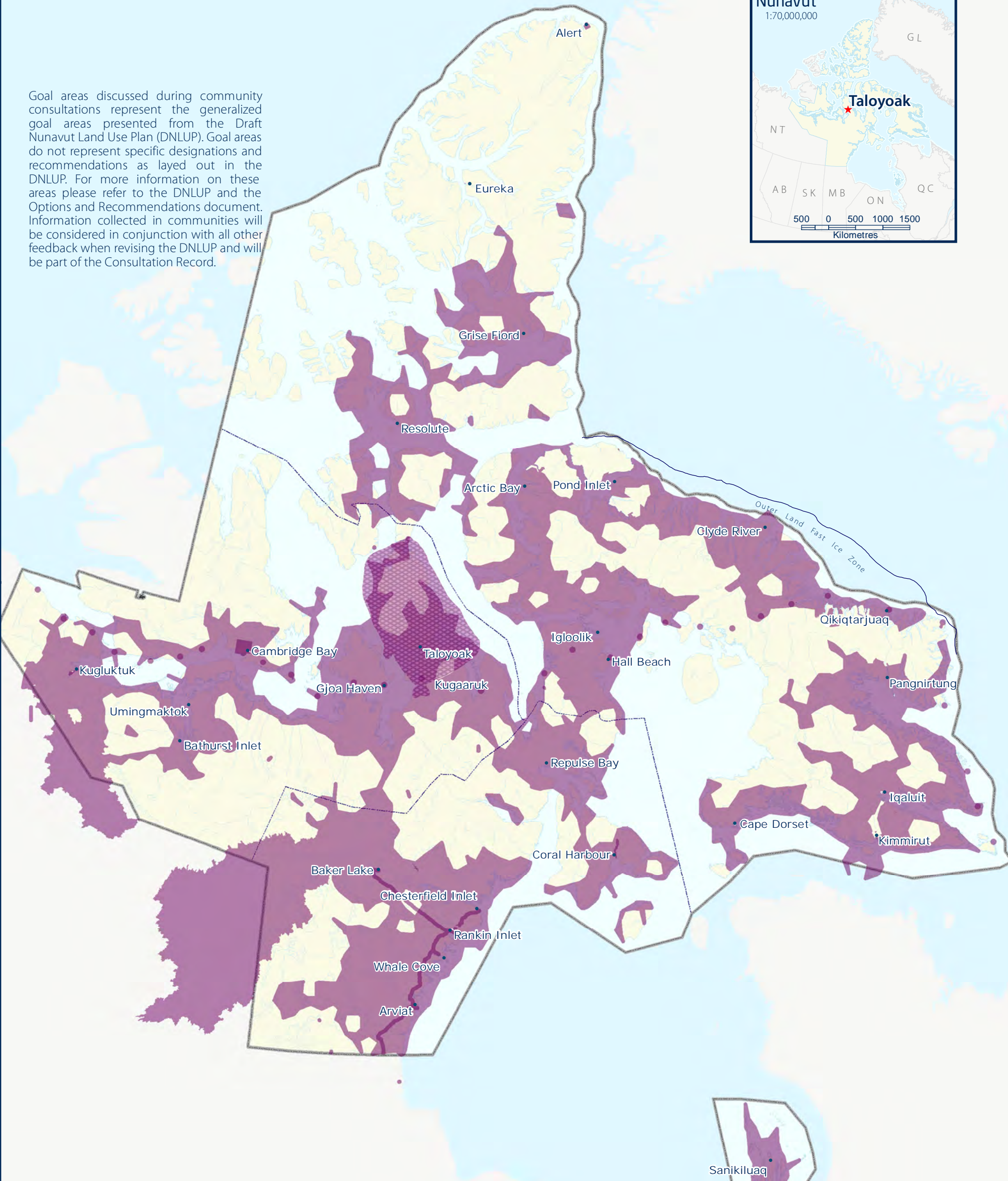
This feedback will be considered in conjunction with all other feedback when revising the DNLUP.





-  BHC Goal areas from the DNLUP discussed during community consultations
-  Additional BHC Goal areas identified during community consultations

Goal areas discussed during community consultations represent the generalized goal areas presented from the Draft Nunavut Land Use Plan (DNLUP). Goal areas do not represent specific designations and recommendations as layed out in the DNLUP. For more information on these areas please refer to the DNLUP and the Options and Recommendations document. Information collected in communities will be considered in conjunction with all other feedback when revising the DNLUP and will be part of the Consultation Record.



For Data Sources see Draft Nunavut Land Use Plan (DNLUP). Areas identified by community collected as part of the Nunavut Planning Commissions Community Engagement Strategy during the Mapping Sessions for the DNLUP on March 20 & 21, 2014. Maps were digitized at the Nunavut Planning Commission. To be used for illustration purposes only as part of the Draft Nunavut Land Use Plan Consultation Process.



Projection: Canada Lambert Conformal Conic, NAD83  
Produced by the Nunavut Planning Commission: (867)983-4625, npc@nunavut.ca  
May-28-14



## Chapter 5: Encouraging Sustainable Economic Development

Encouraging Sustainable Economic Development was one of five topics presented to and discussed by the participants during the information sharing and gathering sessions.

### 5.1 Areas presented to participants

During the information sharing and gathering sessions, participants were presented with the following areas important to Encouraging Sustainable Economic Development;

- Mineral Exploration and Production
- Oil and Gas Exploration
- Commercial Fisheries

The importance of these issues and areas to Encouraging Sustainable Economic Development was not disputed by participants during the information sharing and gathering sessions.

### 5.2 Areas identified by participants

Additional areas and issues were identified by participants as important to Encouraging Sustainable Economic Development during the information sharing and gathering sessions. The additional areas identified are;

- Commercial fisheries
- Soapstone areas
- Tourism and sports hunting areas

### 5.3 Areas of importance to Encouraging Sustainable Economic Development

Areas and issues discussed during the information sharing and gathering sessions as important to Encouraging Sustainable Economic Development are illustrated on Map 4, including areas identified in the DNLUP and areas identified by the

community. Scanned images of the maps on which community feedback was recorded can be found in Appendix 4.

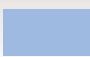
Based on discussions with participants, the NPC understands that:


- The areas identified on Map 4 are considered by the Community to be important to Encouraging Sustainable Economic Development.
- In these areas, the community would like the NLUP to encourage activities that support economic opportunities and needs.

This feedback will be considered in conjunction with all other feedback when revising the DNLUP.

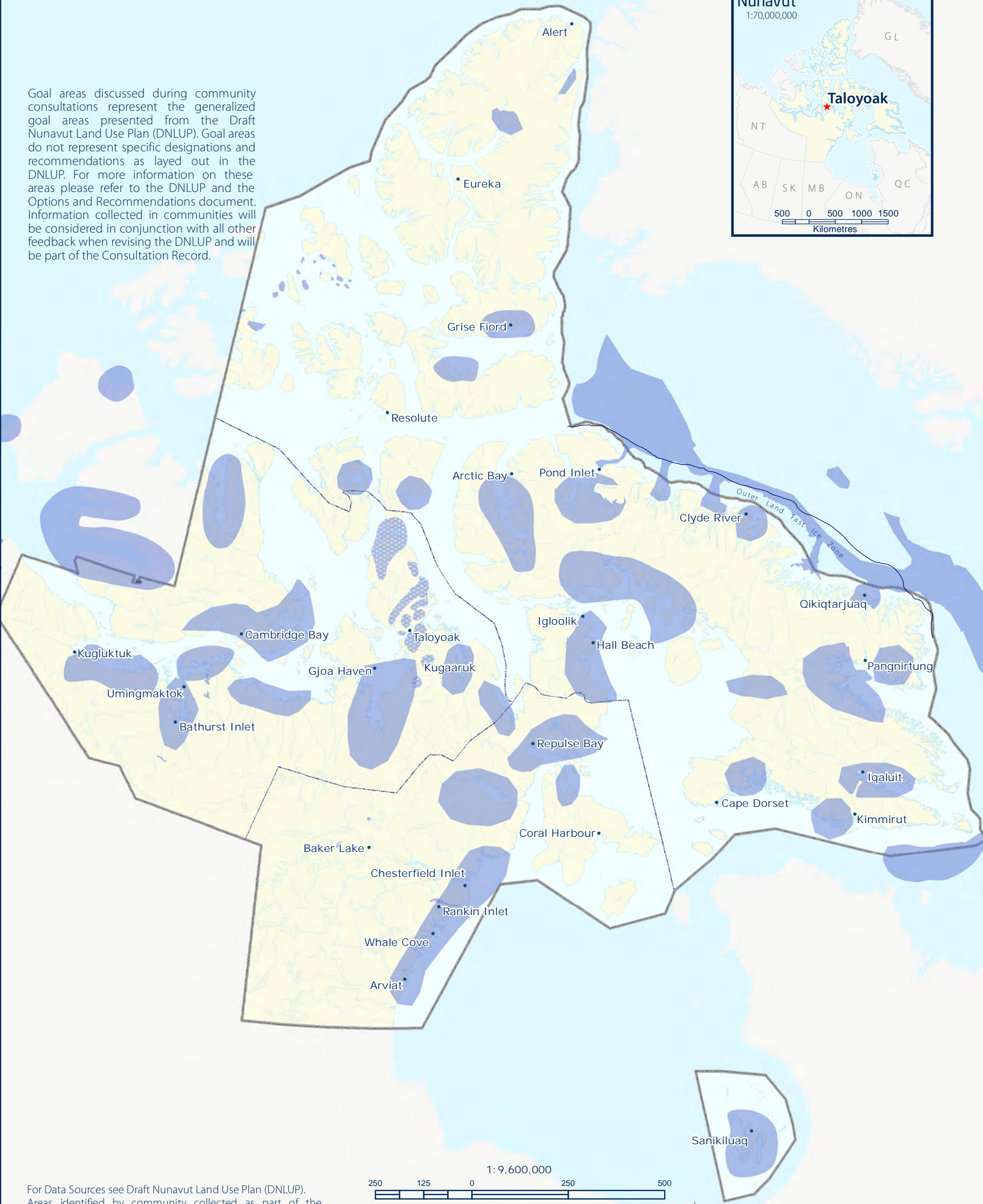





 ESED Goal areas from the DNLUP discussed during community consultations

 Additional ESED Goal areas identified during community consultations


Goal areas discussed during community consultations represent the generalized goal areas presented from the Draft Nunavut Land Use Plan (DNLUP). Goal areas do not represent specific designations and recommendations as layed out in the DNLUP. For more information on these areas please refer to the DNLUP and the Options and Recommendations document. Information collected in communities will be considered in conjunction with all other feedback when revising the DNLUP and will be part of the Consultation Record.



For Data Sources see Draft Nunavut Land Use Plan (DNLUP). Areas identified by community collected as part of the Nunavut Planning Commissions Community Engagement Strategy during the Mapping Sessions for the DNLUP on March 20 & 21, 2014. Maps were digitized at the Nunavut Planning Commission. To be used for illustration purposes only as part of the Draft Nunavut Land Use Plan Consultation Process.



1: 9,600,000  
Kilometres



**ᓄᓇᓂᓄᓐ ᐸᓄᓇᐱᓐᓴᓐ**  
**Nunavunmi Parnaiyiit**  
**Nunavut Planning Commission**  
**Commission d'Aménagement du Nunavut**

Projection: Canada Lambert Conformal Conic, NAD83  
Produced by the Nunavut Planning Commission: (867)983-4625, npc@nunavut.ca  
May-28-14



### 6.1 Areas identified in the Draft Plan

The DNLUP identifies areas important for a variety of uses. These areas were presented to participants during the workshop as Mixed Use Areas. These areas, as they occur around the community, are illustrated on Map 5.

### 6.2 Areas identified by participants

No additional areas were identified as Mixed Use by participants. However, some areas identified as Mixed Use in the DNLUP were considered by participants to require additional protection because of their particular qualities. These areas and the goals they are important for are identified on Map 6.

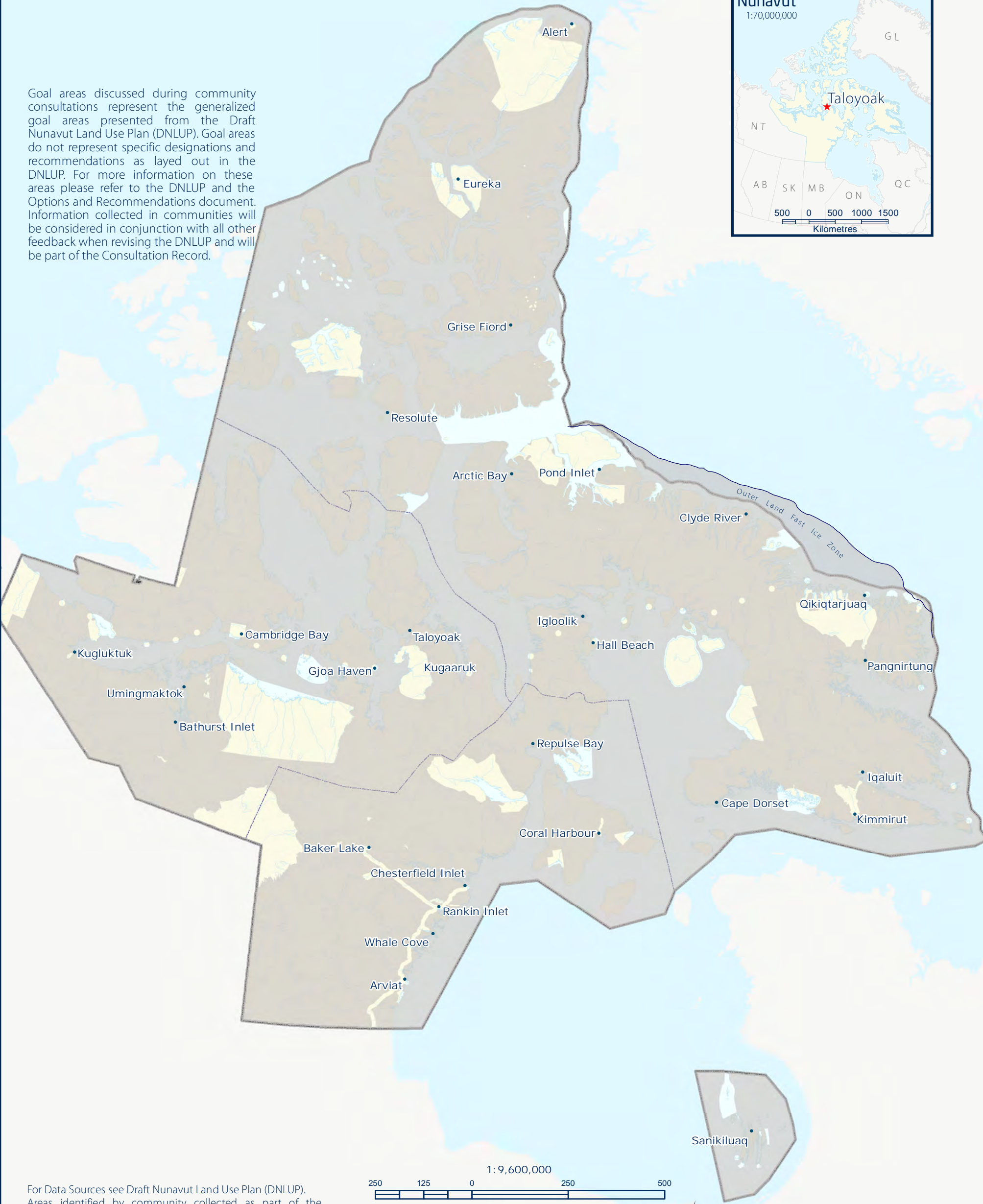






MU Goal areas from DNLUP discussed during community consultations

Goal areas discussed during community consultations represent the generalized goal areas presented from the Draft Nunavut Land Use Plan (DNLUP). Goal areas do not represent specific designations and recommendations as layed out in the DNLUP. For more information on these areas please refer to the DNLUP and the Options and Recommendations document. Information collected in communities will be considered in conjunction with all other feedback when revising the DNLUP and will be part of the Consultation Record.



For Data Sources see Draft Nunavut Land Use Plan (DNLUP). Areas identified by community collected as part of the Nunavut Planning Commissions Community Engagement Strategy during the Mapping Sessions for the DNLUP on March 20 & 21, 2014. Maps were digitized at the Nunavut Planning Commission. To be used for illustration purposes only as part of the Draft Nunavut Land Use Plan Consultation Process.



ᑎᓄᓐᓂᓐ ᐸᓄᓐᓂᓐ  
Nunavunmi Parnaiyiit  
Nunavut Planning Commission  
Commission d'Aménagement du Nunavut

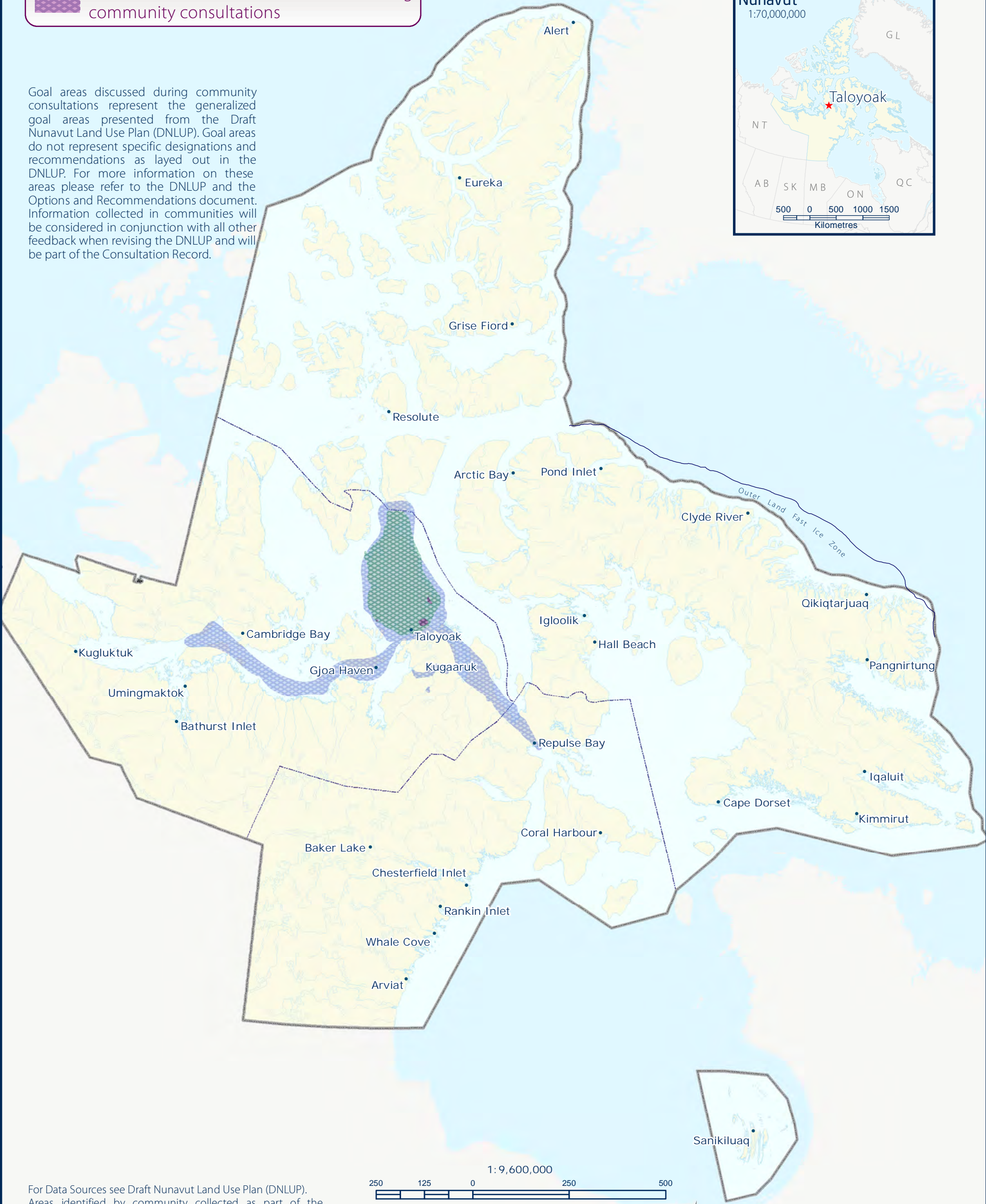
Projection: Canada Lambert Conformal Conic, NAD83  
Produced by the Nunavut Planning Commission: (867)983-4625, npc@nunavut.ca  
Wednesday, April 23, 2014



MIXED USE (MU) • TALOYOAK • MAP 6

- Additional PSE Goal areas identified during community consultations
- Additional ESED Goal areas identified during community consultations
- Additional BHC Goal areas identified during community consultations

Goal areas discussed during community consultations represent the generalized goal areas presented from the Draft Nunavut Land Use Plan (DNLUP). Goal areas do not represent specific designations and recommendations as layed out in the DNLUP. For more information on these areas please refer to the DNLUP and the Options and Recommendations document. Information collected in communities will be considered in conjunction with all other feedback when revising the DNLUP and will be part of the Consultation Record.



For Data Sources see Draft Nunavut Land Use Plan (DNLUP). Areas identified by community collected as part of the Nunavut Planning Commissions Community Engagement Strategy during the Mapping Sessions for the DNLUP on March 20 & 21, 2014. Maps were digitized at the Nunavut Planning Commission. To be used for illustration purposes only as part of the Draft Nunavut Land Use Plan Consultation Process.



**Nunavunmi Parnaiyiit**  
**Nunavut Planning Commission**  
**Commission d'Aménagement du Nunavut**



Projection: Canada Lambert Conformal Conic, NAD83  
Produced by the Nunavut Planning Commission: (867)983-4625, npc@nunavut.ca  
Wednesday, April 23, 2014



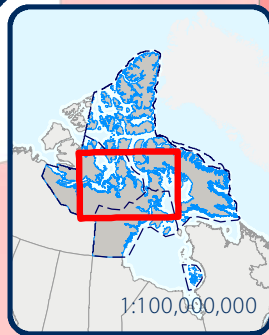
### 7.1 Areas identified for multiple goals

All areas discussed with the community as important for a particular goal are shown on Map 7. In some instances, areas have been identified as important for multiple goals. These areas, and the specific goals they are important to, are also shown on Map 7. In these areas, the NPC will take all of the identified goals and all other feedback into consideration when revising the DNLUP.





# Taloyoak • Map 7 Overlapping Goal Areas



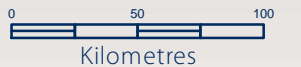
1:100,000,000

- 1 Goal Identified in area
- 2 Goals Identified in area
- 3 Goals Identified in area
- 4 Goals Identified in area

Established Parks  
(Land Use Plan does not apply)

Administrative Boundary

1:3,000,000



Projection: Lambert Conformal Conic, NAD83  
Areas identified by community collected as part of the Nunavut Planning Commissions Community Engagement Strategy during the Mapping Sessions for the DNLUP on March 20 & 21, 2014. Maps were digitized at the Nunavut Planning Commission.  
To be used for illustration purposes only as part of the draft Nunavut Land Use Plan consultation process. Produced by the Nunavut Planning Commission (NPC), 24/04/2014.

## Label Goals in Area

A	PSE
B	ECP
C	BHC
D	ESED
E	PSE, ECP
F	BHC, ECP
G	BHC, PSE
H	ESED, ECP
I	ESED, PSE
K	BHC, ESED
L	BHC, PSE, ECP
M	BHC, ESED, ECP
N	BHC, ESED, PSE
O	ESED, PSE, ECP
P	All Goals (BHC, ESED, PSE, ECP)



ᓄᓇᓂᓄᓐ ᐸᓐᓇᓂᓄᓐ  
Nunavunmi Parnaiyit  
Nunavut Planning Commission  
Commission d'Aménagement du Nunavut



## Appendix 1: Open House

During the open house, participants raised the following issues:

- Helicopters are looking for something all summer. Exploration is scaring caribou.
- We are concerned about shipping for mining project (Sabina?) that proposes going through channel north of Taloyoak that has many marine mammals and caribou sea ice crossings



## Appendix 2: Elected Officials Meeting

The elected officials meeting was attended by the Mayor and members of the Hamlet Council and HTO. During the meeting, participants raised the following issues:

- Outside the community, to the hunting areas in the summer, the roads need to be improved. We need new roads leading outside of community for hunting.
  - The Commission responded that it is not responsible for building roads, and the plan will not impact hunting.
- Concerned with exploration camps. When they are working in our areas they should consult us. We have calving areas and areas used for commercial seal harvesting. North of the community there are exploration camps. Mining companies consult with the KIA but they need to talk to the public and get input from the companies. Many Inuit communities rely on wildlife for food. Fuel spills can be very dangerous in calving grounds and hunting areas.
  - The Commission responded that under the Nunavut Planning and Project Assessment Act and with the NLUP we will be seeing the all the research and activities that will be occurring around the community. You can use the plan to put terms in place to ensure the safety of your wildlife and drinking water supply. The plan is legally binding so if there is a term and condition in the plan all land users must implement them. We will be asking you a series of questions and you can add things.
  - KIA representative also outlined process that KIA follows to involve communities in land use projects.
- Community is interested in creating a park.
  - Discussion on how the plan can support.
- Concern is that during the summer time when the caribou are heading north and they tend to return into the fall. When the caribou migrate from the calving ground from the north, I think there is research in the area can there be research done during the summer and fall then when we see them the low level flying disturbs the caribou.
- Funding from EDT to build roads and trails for hunting and camping areas. These areas are outside the hamlet.
  - The Commission responded that the locations of where the roads need to be should be provided to ensure the plan doesn't prohibit them.



## Appendix 3: Questions and Answers

During the community workshop, there was a question and answer period, which included a discussion of the following topics:

- North of community in spring calving ground - migration heads back down in fall time with calves. How can we protect that area from mining companies as well as other working groups?
  - The Commission responded that areas people would like to see protected can be identified during the mapping session that will follow.
- For people of Taloyoak, this will help us out in the future. You help us and we can help you in return. Caribou passing around community. There are helicopters every year. I have a deep concern for this around Taloyoak. Mining companies, oil companies are breaking a lot of rules and our concern is for protection of the land and also marine mammals. Shipping companies will be a concern during winter season.
  - The Commission responded that these concerns have been heard in other communities as well. During mapping, we will be asking you questions about important areas and you have the ability to recommend terms and conditions. We will prepare a community report and bring it back to verify.

## Appendix 4: Community Workshop Scanned Maps

Two groups completed the mapping session to identify important areas. This Appendix contains the maps that were used by participants to identify areas that are important to the following land use planning goals:

- Protecting and Sustaining the Environment
- Encouraging Conservation Planning
- Building Healthier Communities
- Encouraging Sustainable Economic Development
- Mixed Use

Also included on each map is a reference table that includes the specific values that were identified for the area.

Note: The documented comments for Group 1 were not verified with an audio recording.

During the mapping portion of the community workshop, the following concerns were raised that did not apply to a specific area that was identified on the maps:

- The last time land use planning was happening in the community, the caribou sea ice crossing (PSE-R3 (57)) was identified for possible disruption from shipping.
- Climate today is also changing. We are concerned for wildlife, so we need to protect the wildlife.
- Why do we only protect this area, when we are told that caribou come here from the south?
- Up the coast there is a bridge that needs to be fixed for trail to be improved.





Designations	Permitted Uses	Prohibited Uses
General	Teaching, Research, Research	All Other Uses
Library	Teaching, Research, Research	
Special	Teaching, Research, Research, Special Circumstances, and Special Circumstances	

Reference Table for Recommendations	
Project Thresholds Exceeded in 1 or more Risk Factor (s) must take Info. Impact (s) on that risk factor (s) that may occur on the date.	
Project Thresholds Exceeded in 2 or more Risk Factor (s) must take Info. Impact (s) on that risk factor (s) that may occur on the date.	
Project Thresholds Exceeded in 3 or more Risk Factor (s) must take Info. Impact (s) on that risk factor (s) that may occur on the date.	
Project Thresholds Exceeded in 4 or more Risk Factor (s) must take Info. Impact (s) on that risk factor (s) that may occur on the date.	
Project Thresholds Exceeded in 5 or more Risk Factor (s) must take Info. Impact (s) on that risk factor (s) that may occur on the date.	
Project Thresholds Exceeded in 6 or more Risk Factor (s) must take Info. Impact (s) on that risk factor (s) that may occur on the date.	
Project Thresholds Exceeded in 7 or more Risk Factor (s) must take Info. Impact (s) on that risk factor (s) that may occur on the date.	
Project Thresholds Exceeded in 8 or more Risk Factor (s) must take Info. Impact (s) on that risk factor (s) that may occur on the date.	
Project Thresholds Exceeded in 9 or more Risk Factor (s) must take Info. Impact (s) on that risk factor (s) that may occur on the date.	
Project Thresholds Exceeded in 10 or more Risk Factor (s) must take Info. Impact (s) on that risk factor (s) that may occur on the date.	

Code	Comments
XP01	Protect the area. We use that area for hunting. It is our livelihood.
XP02	In summer, plentiful wildlife. Needs to be protected.
XP03	Whole area needs to be protected. Lots of caribou in that area.
XP04	Calving grounds area. In summer they are in this area. 3 common ties, Gjoa Haven, Taloyoak, and Kugaaruk hunt the herd but Taloyoak people go to this area.
XP05	Taloyoak and Gjoa Haven share to hunt Beluga every summer
XP06	In summer time Narwhals in this area, Bowhead as well.
XP07	In summer time Narwhals in this area, Bowhead as well.
XP08	In winter, Gjoa Haven island has caribou too. Never used to be there in winter but they are there now.
XP09	Baby seal, new caribou grounds on land portion
XP10	Plenty of fish spawning - char
XP11	Plenty of fish spawning - char
XP12	Plenty of fish spawning - char
XP13	Lake has plenty of fish - Char, spawning
XP14	Spawning char
XP15	plenty of char, spawning
XP16	Lots of char, spawning
XP17	Bay has lots of char
XP18	Lots of char here too, spawning
XP19	Lots of char here too, spawning
XP20	Lots of char here too, spawning


 Coordinate System: EPSG 4230  
 Projection: Lambert Conformal  
 Datum: North American 1983  
 False Easting: 0.0000  
 False Northing: 0.0000  
 Central Meridian: -85.0000  
 Standard Parallel 1: 49.0000  
 Standard Parallel 2: 77.0000  
 Latitude Of Origin: 49.0000  
 Units: Meter

[illegible]



A map of the north-east of the Iberian Peninsula, showing the location of the study area (red rectangle) and the location of the study area (red rectangle).



Designations	Permitted Uses	Prohibited Uses
Level 1	Security, Scientific, Research	All other uses
Level 2	Security, Scientific, Research	
Level 3	Security, Scientific, Research, Journalistic, Religious, Media, Governmental, and Charitable Uses	

Reference Table for Recommendations	
High	Project proposals located in a high risk region should take the necessary steps to the maximum level that can be met.
Medium	Project proposals located in medium risk areas should take the necessary steps to the maximum level that can be met.
Low	Project proposals in low risk areas should take the necessary steps to the maximum level that can be met.
Very Low	Project proposals in very low risk areas should take the necessary steps to the maximum level that can be met.

Code	Comments
XP01	Arctic char in these areas. In the rivers going into the lakes
XP02	Arctic char
XP03	Arctic char
XP04	Arctic char and lake trout. Char going up the river
XP05	Arctic char
XP06	Arctic char
XP07	Arctic char in this area
XP08	Arctic char in this area
XP09	Arctic char in this area
XP10	Lake trout in this area
XP11	Arctic char area
XP12	Arctic char area
XP13	A lot of trout in this area
XP14	Lake trout
XP15	Caribou calving grounds, migration route and muscox in this area also
XP16	Trout that go up rivers. Caribou and muscox in the area also.
XP17	Ducks, gulls nesting area.
XP18	Addition to PSE – Increase this area.
XP19	Beluga whales in the area east and west coast where the beluga, bowhead and narwhale migrates
XP20	Beluga, narwhal and bowhead whales

Signature of Mapper \_\_\_\_\_




 Coordinate System: EPSG 42304 LCC  
 Projection: Lambert Conformal Conic  
 Datum: North American 1983  
 False Easting: 0.0000  
 False Northing: 0.0000  
 Central Meridian: -95.0000  
 Standard Parallel 1: 49.0000  
 Standard Parallel 2: 7.0000  
 Latitude Of Origin: 49.0000  
 Units: Meter

[illegible]





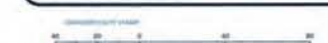
Designations	Permitted Uses	Prohibited Uses
2201	Residential, Recreational, Nonprofit	Business Use
3000	Residential, Recreational, Nonprofit	

Reference Table for Recommendations

Code	Comments
XC21	In summer landscape is very beautiful, plentiful wildlife. Protect. Do not want disrupted.
XC22	In summer landscape is very beautiful, plentiful wildlife. Protect. Do not want disrupted.
XC23	In summer landscape is very beautiful, plentiful wildlife. Protect. Do not want disrupted.
XC24	Fort Ross historic site. Old Hudsons Bay, staff housing, lots of wildlife. Hamlet has been trying for 10 years to have established as a park. Used for a long time but too much ice and whirlpools - had to desert it. Seals and whales swallowed by whirlpools.

<p>Community _____</p> <p>Location: _____</p> <p>Region _____</p> <p>Date _____</p> <p>Community Size _____</p> <p>Map # _____</p>		<p><i>Homeland Planning Commission</i></p> <p><i>Community Participation Trust</i></p> <p><i>Local Area Mapping Team</i></p>
<p><b>Signatures of the Community representative, as permitted to sign on conduct mapping research on community.</b></p>		
1. _____	16. _____	
2. _____	17. _____	
3. _____	18. _____	
4. _____	19. _____	
5. _____	20. _____	
6. _____	21. _____	
7. _____	22. _____	
8. _____	23. _____	
9. _____	24. _____	
10. _____	25. _____	
11. _____	26. _____	
12. _____	27. _____	
13. _____	28. _____	
14. _____	29. _____	
15. _____	30. _____	

Signature of Mapper: \_\_\_\_\_

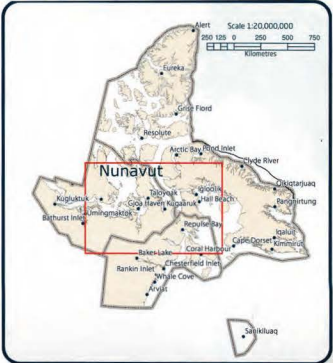
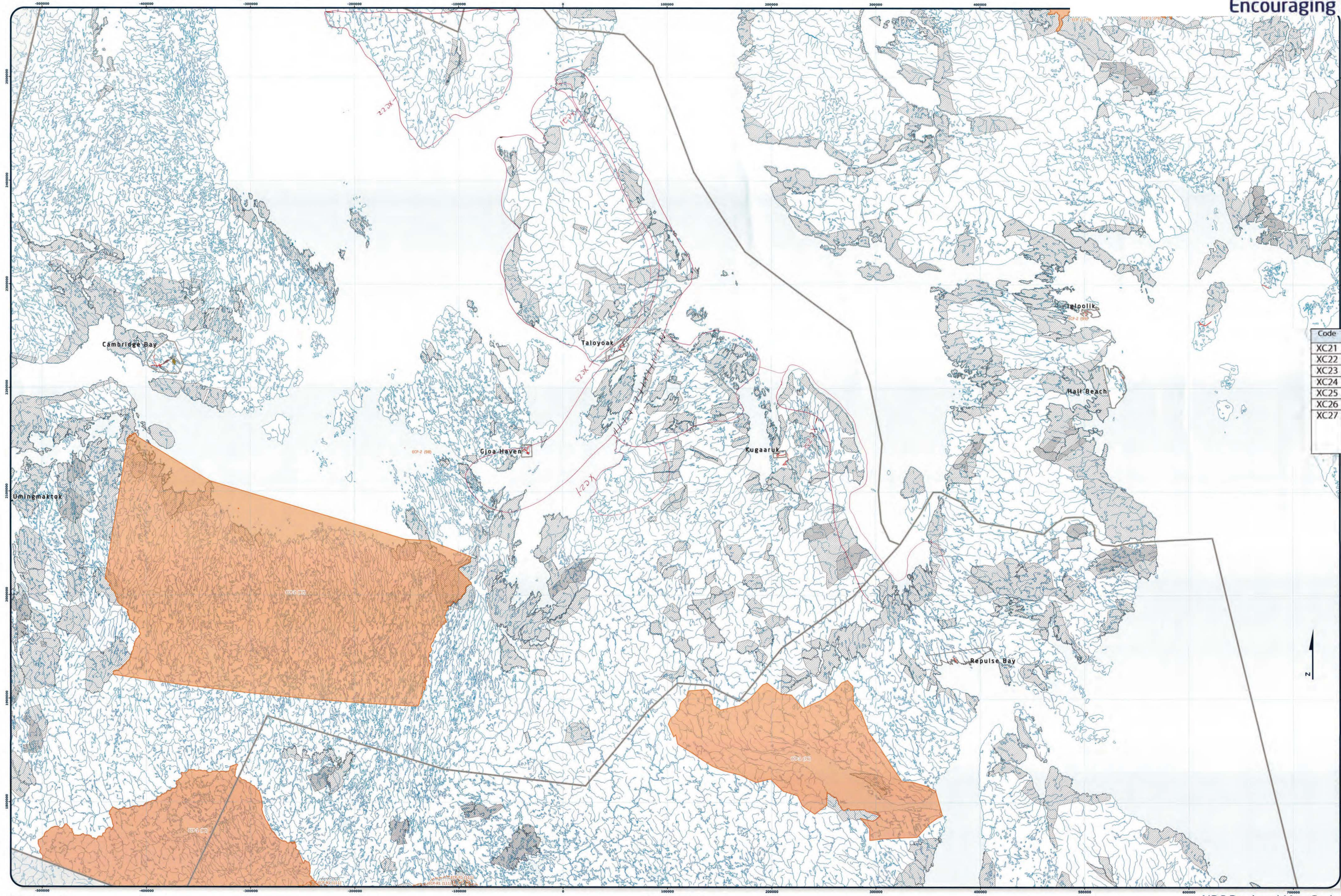



 Coordinate System: EPSG 4232  
 Projection: Lambert Conformal  
 Datum: North American 1983  
 False Easting: 0.0000  
 False Northing: 0.0000  
 Central Meridian: -95.0000  
 Standard Parallel 1: 49.0000  
 Standard Parallel 2: 77.0000  
 Latitude of Origin: 49.0000  
 Units: Meter

[illegible]



Taloyoak - Group 2 Results  
Encouraging Conservation Planning



Designations	Permitted Uses	Prohibited Uses
XC-1	Tourism, Recreation, Research	All Other Uses
XC-2	Tourism, Recreation, Research	All Other Uses
XC-3	Tourism, Recreation, Research	All Other Uses
XC-4	Tourism, Recreation, Research	All Other Uses
XC-5	Tourism, Recreation, Research	All Other Uses
XC-6	Tourism, Recreation, Research	All Other Uses
XC-7	Tourism, Recreation, Research	All Other Uses
XC-8	Tourism, Recreation, Research	All Other Uses
XC-9	Tourism, Recreation, Research	All Other Uses
XC-10	Tourism, Recreation, Research	All Other Uses
XC-11	Tourism, Recreation, Research	All Other Uses
XC-12	Tourism, Recreation, Research	All Other Uses
XC-13	Tourism, Recreation, Research	All Other Uses
XC-14	Tourism, Recreation, Research	All Other Uses
XC-15	Tourism, Recreation, Research	All Other Uses
XC-16	Tourism, Recreation, Research	All Other Uses
XC-17	Tourism, Recreation, Research	All Other Uses
XC-18	Tourism, Recreation, Research	All Other Uses
XC-19	Tourism, Recreation, Research	All Other Uses
XC-20	Tourism, Recreation, Research	All Other Uses
XC-21	Tourism, Recreation, Research	All Other Uses
XC-22	Tourism, Recreation, Research	All Other Uses
XC-23	Tourism, Recreation, Research	All Other Uses
XC-24	Tourism, Recreation, Research	All Other Uses
XC-25	Tourism, Recreation, Research	All Other Uses
XC-26	Tourism, Recreation, Research	All Other Uses
XC-27	Tourism, Recreation, Research	All Other Uses

Code	Comments
XC21	Traditional hunting and camping
XC22	Traditional hunting and camping grounds
XC23	Traditional hunting grounds
XC24	Traditional hunting grounds
XC25	Traditional camping area
XC26	Barren ground caribou, Peary caribou
XC27	Kellet River area – do not want this area for commercial fishing because the community fishes in this area and don't want it over fished.

Nunavut Planning Commission  
Community Consultation Tour  
Land Use Mapping Section

Community: \_\_\_\_\_  
Location: \_\_\_\_\_  
Region: \_\_\_\_\_  
Date: \_\_\_\_\_  
Community #/NA: \_\_\_\_\_  
Map # \_\_\_\_\_

Signature of the Community signatory as per section 10 of the Nunavut Planning Commission Act

1. \_\_\_\_\_ 16. \_\_\_\_\_  
2. \_\_\_\_\_ 17. \_\_\_\_\_  
3. \_\_\_\_\_ 18. \_\_\_\_\_  
4. \_\_\_\_\_ 19. \_\_\_\_\_  
5. \_\_\_\_\_ 20. \_\_\_\_\_  
6. \_\_\_\_\_ 21. \_\_\_\_\_  
7. \_\_\_\_\_ 22. \_\_\_\_\_  
8. \_\_\_\_\_ 23. \_\_\_\_\_  
9. \_\_\_\_\_ 24. \_\_\_\_\_  
10. \_\_\_\_\_ 25. \_\_\_\_\_  
11. \_\_\_\_\_ 26. \_\_\_\_\_  
12. \_\_\_\_\_ 27. \_\_\_\_\_  
13. \_\_\_\_\_ 28. \_\_\_\_\_  
14. \_\_\_\_\_ 29. \_\_\_\_\_  
15. \_\_\_\_\_ 30. \_\_\_\_\_

Signature of Mapper: \_\_\_\_\_



Coordinate System: EPSG 42304 LCC  
Projection: Lambert Conformal Conic  
Datum: North American 1983  
False Easting: 0.0000  
False Northing: 0.0000  
Central Meridian: -95.0000  
Standard Parallel 1: 45.0000  
Standard Parallel 2: 77.0000  
Latitude Of Origin: 45.0000  
Units: Meter

Working Draft Sub-regional map data sources:  
For Land Use Designations and Recommendations sources see draft Nunavut Land Use Plan and background material data source documents.  
Hillshade created by utilizing Swiss method in Hillshade toolbox courtesy of ESRi user forums. Water bodies created by merging all 1:250,000 WTS shapefiles in Nunavut, version 2.0, and selecting all waterbodies over 50 hectares in size. Land outside of Nunavut, courtesy of Geogistics. Administrative boundaries consist of NPC draft regional boundaries, created to reflect Regional Inuit Association jurisdictions, combined with municipal boundaries provided by Natural Resources Canada. Inuit Owned Lands courtesy of Nunavut Tunngavik Incorporated. Territorial parks from the Government of Nunavut. National Parks from Parks Canada. Data for areas within municipal boundaries obtained from Natural Resources Canada cadastral data.  
This map is to be used for reference purposes only by the NPC.  
Any further use of this map or data therein must be authorized by contacting the Nunavut Planning Commission at: (867)993-4625 or email mps@nplanning.nunavut.ca  
Tuesday, March 11, 2014





Project	Project Proposals located in the Huakua River Area of Interest should take into account impacts on the cultural value of the area.
Project	Project Proposals located in areas of traditional land use should take into account impacts on the cultural value of the area.
Project	Project Proposals located in a community water supply watershed should take into account impacts on the quality and quantity of community drinking water.
Project	Project Proposals located in a municipal Airport should take into account impacts on aerospace safety.

4.	_____	50	_____
5.	_____	55	_____
6.	_____	61	_____
7.	_____	67	_____
8.	_____	73	_____
9.	_____	79	_____
10.	_____	85	_____
11.	_____	91	_____
12.	_____	97	_____
13.	_____	103	_____
14.	_____	109	_____
15.	_____	115	_____

Signature of Mapper: \_\_\_\_\_


 as per ILL. H.S. 1-10  
 Approved: Planning Commission  
 Submitted: Planning Commission  
 Submitted: Planning Commission

Coordinate System: EPSG 43264 LCC  
 Projection: Lambert Conformal Conic  
 Datum: North American 1983  
 False Easting: 500000  
 False Northing: 0.0000  
 Central Meridian: -95.0000  
 Standard Parallel 1: 49.0000  
 Standard Parallel 2: 77.0000  
 Latitude Of Origin: 49.0000  
 Units: Meter

This map is to be used for reference purposes only by the NPS. Any further use of this map or any of the information contained herein must be authorized by consulting the National Park Service. Comments at: 888.739.4625 or via email: [mapcomments@nps.gov](mailto:mapcomments@nps.gov)

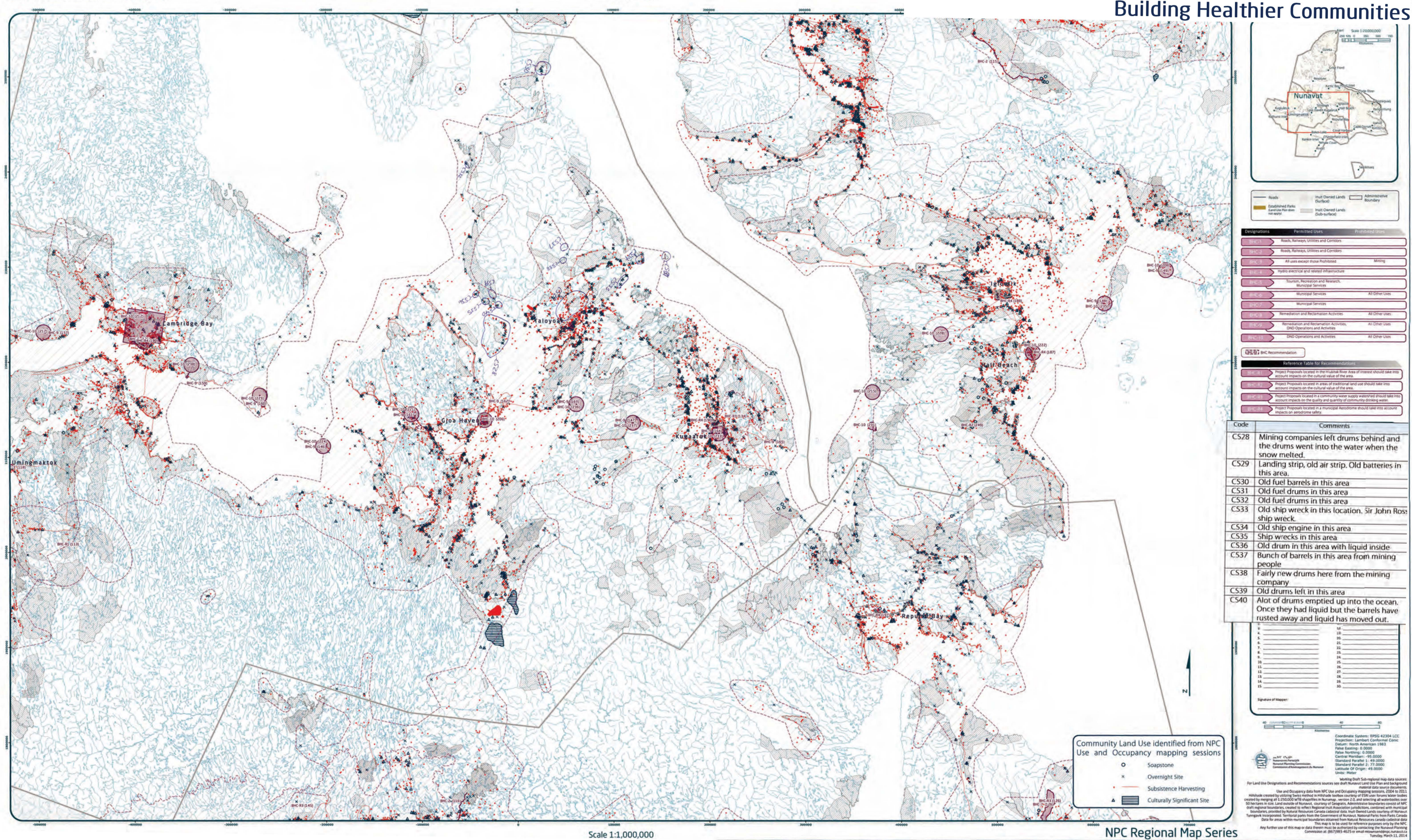
Community Land Use identified from NPC Use and Occupancy mapping sessions

- Soapstone
- × Overnight Site
- Subsistence Harvesting
- Culturally Significant Site

NPC Regional Map Series



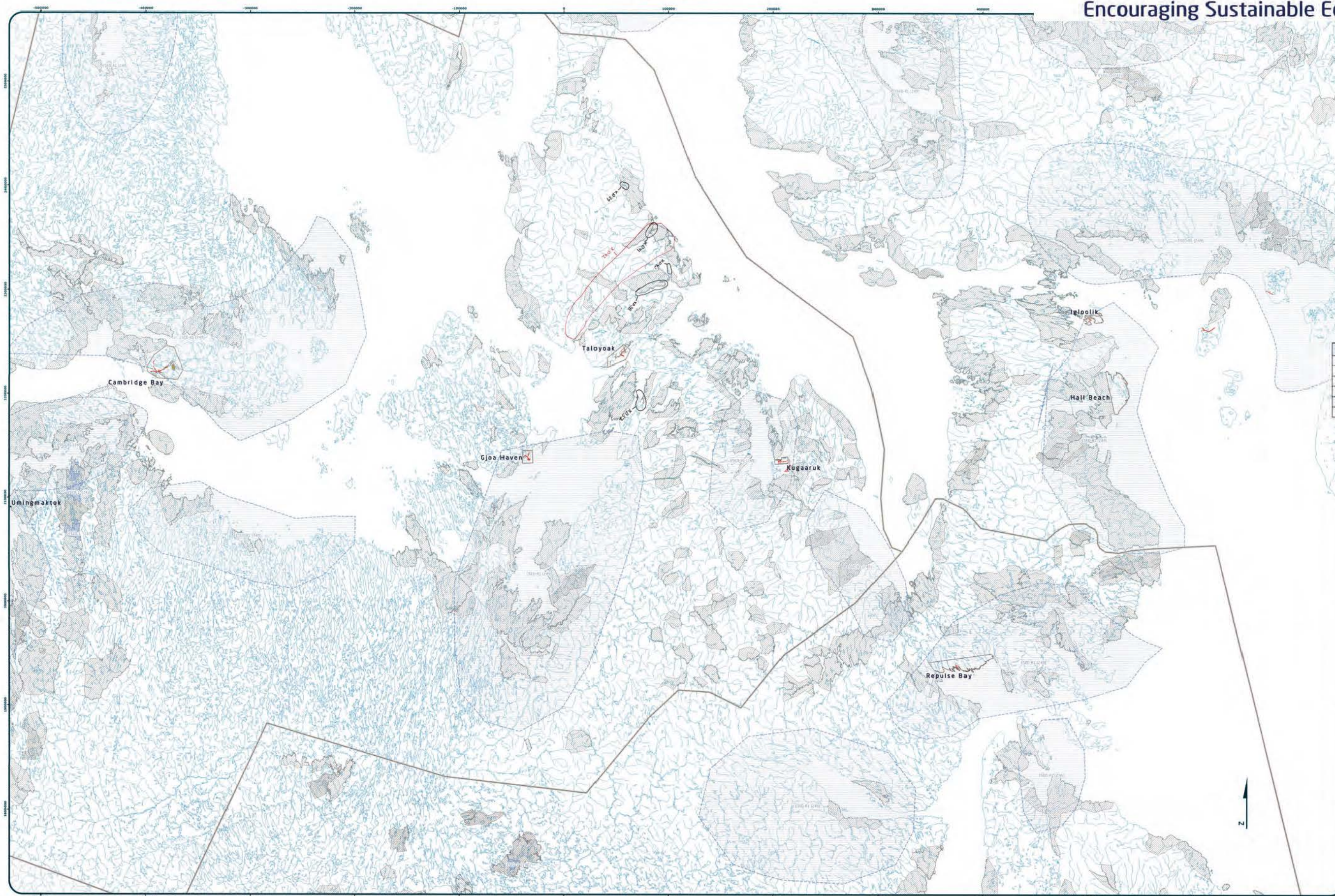
# Taloyoak - Group 2 Results Building Healthier Communities





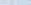
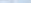










## Taloyoak – Group 1 Results

Scale 1:1,000,000



Designations	Permitted Uses	Prohibited Uses
  	Storage, Transportation and Distribution Activities, Space, Expansion, Offloading, and Loading	
  	15' or greater berthing in all berthing areas adjacent	
  		
<b>Reference Table for Recommendations</b>		
  	These measures are recommended for use in all cases, unless noted, and are intended to be used in conjunction with the other measures listed in the table.	

Code	Comments
XD37	Whitefish commercial fishery potential
XD38	Lord Lindsay - Commercial char fishery
XD39	Commercial char fishery
XD40	Commercial char fishery
XD41	Commercial char fishery
XD42	Lake Trout area

[illegible]

Community: \_\_\_\_\_  
Location: \_\_\_\_\_  
Region: \_\_\_\_\_  
Date: \_\_\_\_\_  
Community Pilot  
Map # \_\_\_\_\_

Signatures of the Community signify its participation to form a conduct mapping session as follows:	
1. _____	16. _____
2. _____	17. _____
3. _____	18. _____
4. _____	19. _____
5. _____	20. _____
6. _____	21. _____
7. _____	22. _____
8. _____	23. _____
9. _____	24. _____
10. _____	25. _____
11. _____	26. _____
12. _____	27. _____
13. _____	28. _____
14. _____	29. _____
15. _____	30. _____

Signature of Mapper:




 دولة الإمارات العربية المتحدة  
 National Planning Commission  
 Commission d'Aménagement du Territoire

Coordinate System: EPSG 42304  
 Projection: Lambert Conformal Conic  
 Datum: North American 1983  
 False Easting: 0.0000  
 False Northing: 0.0000  
 Central Meridian: -95.0000  
 Standard Parallel 1: 49.0000  
 Standard Parallel 2: 77.0000  
 Latitude Of Origin: 49.0000  
 Units: Meter

Working Draft Sub-regional map of the  
For Land Use Designations and Recommendations subject to draft Nuvallut Land Use Plan and base  
material data source is  
Hillshade created by 1:250,000 Scale map in Hillshade, toolbar 2.0, and selecting all source data  
created by merging all 1:250,000 WTS shapefiles in Nunavut, version 2.0, and selecting all source data  
50 hectares in size. Land outside of Nunavut, country of Georgia, Administrative boundaries consist  
of administrative boundaries, created to reflect the boundaries of the Nunavut Government, and  
boundaries, provided by Natural Resources Canada cadastral data, Inuit Owned Lands (POL) of  
Tunngavik Incorporated. Territorial parks from the Government of Nunavut, Parks from Parks  
Data for areas within municipal boundaries obtained from Natural Resources Canada cadastral  
This map is to be used for reference purposes only for  
Any further use of this map or data therein must be authorized by contacting the Nunavut  
Commission at (867)793-4625 or email [nunavutcommission@nunavut.ca](mailto:nunavutcommission@nunavut.ca)  
Tuesday, March 27, 2012

Scale 1:1.000.000



### Taloyoak – Group 2 Results



Code	Comments
XD41	Harvesting char in this area. Commercial fishing potential.
XD42	Potential for harvesting char
XD43	Potential fishing area for char
XD44	Potential for fishing char in this area
XD45	Land locked char and trout in this area for commercial fishing
XD46	Commercial fishing in this area
XD47	Commercial fishing in this area
XD48	Potential fishing area
XD49	Soap stone in this area
XD50	Soap stone in this area
XD51	Soap stone area
XD52	White soap stone in this area

Any further use of this map or data therein must be approved by contacting the National Data Centre at (867)793-4625 or email [info@nrc.ca](mailto:info@nrc.ca).



Code	Comments
MU43	River for commercial fishing
MU44	Camping area a lot of people go here every summer by honda and boat to look for whales, a lot of fish and wildlife
MU45	Plenty of fish, seals, Polar Bear, go there in summer, cabins there
MU46	Soapstone quarry - commercial
MU47	Muskox all around

A blank sheet of white paper with horizontal blue or grey ruling lines. The lines are evenly spaced and run across the width of the page. There is a vertical margin line on the left side, creating a narrow left margin. The paper appears to be from a notebook or a standard ruled sheet.

Annual Planning Committee  
Inventory Submitted on Year \_\_\_\_\_  
by the Mapping Member \_\_\_\_\_

Community: \_\_\_\_\_  
Location: \_\_\_\_\_  
Region: \_\_\_\_\_  
Date: \_\_\_\_\_  
Community Role \_\_\_\_\_  
Map # \_\_\_\_\_

**Signatures of the Community sign-in, permission**  
to record mapping sessions as follows:

1.	_____	16.	_____
2.	_____	17.	_____
3.	_____	18.	_____
4.	_____	19.	_____
5.	_____	20.	_____
6.	_____	21.	_____
7.	_____	22.	_____
8.	_____	23.	_____
9.	_____	24.	_____
10.	_____	25.	_____
11.	_____	26.	_____
12.	_____	27.	_____
13.	_____	28.	_____
14.	_____	29.	_____
15.	_____	30.	_____

Signature of Mapper: \_\_\_\_\_  
\_\_\_\_\_



 **الهيئة العامة للتخطيط  
National Planning Commission**  
*Commission d'Aménagement du Territoire*

Coordinate System: EPSG:42304 UTM  
Projection: Lambert Conformal Conic  
Datum: North American 1983  
False Easting: 0.0000  
False Northing: 0.0000  
Central Meridian: -95.0000  
Standard Parallel 1: 48.0000  
Standard Parallel 2: 77.0000  
Latitude Of Origin: 49.0000  
Units: Meter

For Land Use Designations and Recommendations sources use that Nunavut Land Use Plan and background material data source described in the table below.

Habitat created by a volcanic eruption melted in Hothouse Bay, Nunavut, courtesy of the Nunavut Government, created by merging all 1,250,000 WTB shapes in Nunavut, version 2.0, and selecting all waterbodies 10 feet or less in size. Land outside of Nunavut, courtesy of Geographic Administrative Boundaries consist of all regional boundaries, created to reflect Regional Unit Association jurisdictions, combined with marine boundaries, provided by Natural Resources Canada (cadastal data, Inuit Owned Lands, courtesy of Nunavut Government Incorporated. Territorial parks from the Government of Nunavut, National Parks from Parks Canada.

Data for areas within municipal boundaries obtained from Natural Resources Canada (cadastal data).

This map is to be used for reference purposes only in the Nunavut Land Use Plan.

Any further use of this map or data therein must be authorized by contact the Nunavut Planning Commission at: (867)793-6423 or email [landuse@nunavut.ca](mailto:landuse@nunavut.ca)

Whitehorse, March 12, 2012



Taloyoak - Group 2 Results  
Mixed Use

MIACU USE (MU)

Scale 1:1,000,000



Code	Comments
MU53	Tourism, sport hunting
MU54	Kayaking in this area for tourism
MU55	There is arctic char and soap stone. There is also some type of hydrophone in this area to record and scare off killer whales and other marine mammals. They prevent the whales from going into Prince of Wales Islands.
MU56	Dark green serpentine/soapstone
MU57	Soap stone
MU58	Pinkish soapstone
MU59	Soap stone in this area to make traditional lamps
MU60	Soap stone in this area dark blue in colour
MU61	Soap stone in this area - green
MU62	Soap stone

Community: \_\_\_\_\_  
Location: \_\_\_\_\_  
Region: \_\_\_\_\_  
Date: \_\_\_\_\_  
Community Map: \_\_\_\_\_  
Map # \_\_\_\_\_

Signature of the Community representative to participate in the mapping process as follows:

1.	24.
2.	25.
3.	26.
4.	27.
5.	28.
6.	29.
7.	30.
8.	31.
9.	32.
10.	33.
11.	34.
12.	35.
13.	36.
14.	37.
15.	38.

Signature of Mapper: \_\_\_\_\_

Coordinate System: EPSG:4234 LCC  
Projection: Lambert Conformal Conic  
Datum: North American 1983  
False Easting: 0.0000  
False Northing: 0.0000  
Central Meridian: -95.0000  
Standard Parallel 1: -69.0000  
Standard Parallel 2: 77.0000  
Latitude Of Origin: 49.0000  
Units: Meter

For Land Use Designations and Recommendations sources see Draft Regional Land Use Plan and background information data source documents.  
Waterbody created by utilizing data provided in Waterbody outline courtesy of ESR and Natural Resources Canada.  
500 meters in size. Land outside of Nunavut, courtesy of Statistics Canada. Administrative boundaries of Nunavut and regional boundaries, created to reflect Regional Inuit Association jurisdiction, combined with municipal boundaries, provided by Natural Resources Canada. Land use data, Inuit owned lands courtesy of Nunavut Tunavut Incorporated. Territorial parks from the Government of Nunavut. National Parks from Parks Canada.  
Data for areas within municipal boundaries obtained from Natural Resources Canada. Land use data.  
This map is to be used for reference purposes only by the NPC.  
Any further use of this map or data therein must be authorized by contacting the Natural Planning Commission at 867-983-4522 or email: npcc@nrcan.gc.ca  
Wednesday, March 12, 2024

EAST KITIKMEOT

Scale 1:1,000,000

NPC Regional Map Series



## Appendix 5: Follow-up Meeting

The NPC returned to the community and reviewed a draft version of this report with the Hamlet Council, Hunters and Trappers Organization, and the Community Beneficiary Committee. The meeting included:

- A presentation of a draft version of this report
- An overview of the mapped information that was recorded for each topic:
  - Protecting and Sustaining the Environment
  - Encouraging Conservation Planning
  - Building Healthier Communities
  - Encouraging Sustainable Economic Development
  - Mixed Use
- General discussion and comments including:
  - Opportunities to provide additional comments.
  - Plan approval role of AANDC, GN DOE and NTI
  - How the plan can manage land use to protect wildlife.
  - Concerned with mining and oil and gas development in the area that is used for animals. Mining and oil and gas would be good if the youth were educated to take advantage of the opportunity.
  - HTO wants to work with staff to identify areas of importance to wildlife where there is no development
  - How the Plan will be implemented and enforced.