



ᓄᓇᑭᓴᓴ ᐸᓴᓇᐃᓴᓴ  
Nunavunmi Parnaiyit  
Nunavut Planning Commission  
Commission d'Aménagement du Nunavut

# Summary of Community Meetings on the 2016 Draft Nunavut Land Use Plan

## KUGLUKTUK

November 27, 2019



## Contents

1. Introduction .....	3
1.1 Context.....	3
1.2 Purpose .....	3
1.3 Methodology.....	3
1.4 Public Awareness .....	4
1.5 Follow Up .....	4
2. Breakout Group Questions and Participant Responses.....	5
1. Key Migratory Bird Habitat .....	5
2. On-Ice Community Travel Routes .....	6
3. Hiukitak River Community of Interest .....	7
4. Caribou Sea Ice Crossing Area.....	8
5. Caribou Fresh Water Crossing.....	8
6. Caribou Calving Areas .....	10
7. Caribou Post Calving Areas .....	11
8. Final wrap up Question? .....	12
Appendix A: Breakout Group Reference Maps.....	13
Appendix B: Breakout Group Map Revisions.....	16
Map 1: Additional Migratory Bird Habitat	
Map 2: Additional On Ice Travel Routes	
Map 3: Additional Dolphin Union Caribou Sea Ice Crossing Areas	
Map 4: Additional Caribou Fresh Water Crossing Areas	
Map 5: Additional Caribou Calving Habitat	
Map 6: Additional Caribou Post Calving Habitat	
Map 7: Arctic Char River, Polynya, and Potential Hydro-Electric Areas	

# 1. Introduction

## 1.1 Context

The Nunavut Planning Commission prepared a 2016 Draft Nunavut Land Use Plan (2016 DNLUP) for public comment and consideration. Following the release of the 2016 DNLUP, the Commission received a significant amount of written comments and oral feedback during an in-person public hearing in Iqaluit in March 2017 for communities in the Qikiqtani region as well as transboundary Nunavik communities. In August 2019, the Commission received funding to complete consultations on the 2016 DNLUP by holding Information Sessions under rule 17 of the Commission's new Rules for Public Proceedings in the Kivalliq and Kitikmeot regions.

## 1.2 Purpose

The purpose of the Information Sessions was to hear the views of community residents on the 2016 DNLUP. This report summarizes feedback received during the Information Sessions held in Kugluktuk and is prepared under rule 15(5) of the *Rules for Public Proceedings*. The purpose of the report is to inform revisions to the 2016 DNLUP ensuring that the plan reflects the priorities and values of residents.

It is important to note that the information contained in this community report will be considered in conjunction with all other feedback when revising the 2016 DNLUP.

## 1.3 Methodology

During the community visit the following events took place:

- **Elected Officials Meeting;** (7:00-8:00 PM on November 26) Attended by Hamlet council
  - The Commission Chairperson and staff met with the Hamlet Council in Council chambers to provide a brief overview of the NPC's role and responsibility in Nunavut's regulatory system, process history, and preparation for the Information Sessions to be held in the afternoon and evening. An opportunity for questions and answers was provided, but no formal feedback on the 2016 DNLUP was provided or recorded during this meeting.
- **Afternoon Information Session;** (1:30 to 4:30) Attended by approximately 40 people, held 2 breakout groups.
  - **Posters;** Multi-lingual posters for each chapter of the Draft Plan were posted in the Community Hall for review.
  - **Presentation;** The Commission chairperson and staff provided an introductory presentation that included a brief overview of some background information, the Commission role and responsibility, role in Nunavut's regulatory system, process history, 2016 DNLUP chapter overview, and preparation for breakout groups including the types of questions that would be asked.
  - **Breakout Groups;** Held breakout group discussions to review community-specific maps (see Appendix A) and ask questions on priority issues (see section 2). Recorded oral feedback and mapped suggested revisions and additions to geographic boundaries (see Appendix B)

- **Evening Information Session;** (6:30 to 9:30) Attended by approximately 10 people, held 1 breakout groups.
  - Repeat same format as afternoon session

## 1.4 Public Awareness

Letters of invitation were sent to the Mayor and Council and HTO in advance of the NPC's visit to request a meeting with elected officials, advise of the public meetings and to encourage participation. Follow up phone calls were also made. Public notice of the meetings was provided in the following ways:

- **Nunatsiaq News;** notice of community meetings was posted in the newspaper in advance of the meetings.
- **Community radio;** notices were read by the hosts.
- **Community bulletin boards;** notices were posted on bulletin boards around the community in advance of the meetings.
- **Facebook;** information was posted on the NPC's Facebook page as well as on local community group pages in advance of the meetings.
- **nunavut.ca;** the schedule of community visits, the Draft Plan, and supporting information was available on the Commission's website.

## 1.5 Follow Up

This summary report will be provided to the Hamlet Council and HTO for review and posted on the NPC's Public Registry for consideration by all participants who may provide comments on it until February 28, 2020. The report and any comments on it will be considered by Commissioners when revising the 2016 DNLUP along with all other feedback that has been received.

## 2. Breakout Group Questions and Participant Responses

This section summarizes the notes and questions that were used by NPC staff during the breakout groups and well as the participant responses to each question.

### 1. Key Migratory Bird Habitat

There are two proposed migratory bird habitat areas near Kugluktuk: Bathurst/Elu Inlet (common eider, Thayer's gull) and Lambert Channel (pacific common eider). These areas were identified by Canadian Wildlife Service as highly risk intolerant and are used by migratory birds for breeding, nesting, rearing, feeding, moulting, and staging.

The 2016 DNLUP, recommends that both be designated as Protected Areas with prohibited activities and seasonal conditions (setbacks) for other activities. Activities prohibited year-round are oil and gas exploration and production. Conditions or setbacks for aerial, marine, and terrestrial approach distances are seasonal (when the birds are present) and specific to the types of birds using the habitat. For example, the recommended marine setback for Bathurst/Elu Inlet Migratory Bird Habitat is that boats must stay 500 metres away from colonies and concentrations of birds.

*Note for participants: There are parcels of Inuit Owned Land within the area and no overlapping mineral rights.*

#### a. Do you agree that this is key migratory bird habitat?

➤ ***Kugluktuk community participants agreed that Bathurst/Elu Inlet and Lambert Channel are important habitat for migratory birds and recommended extensions to the areas.***

- Group 1 – Participants agreed that Bathurst/Elu Inlet and Lambert Channel are important bird areas and noted that the Bathurst/Elu Inlet area should be extended to the south and the Lambert Channel area should be extended east and west. Also noted that Bathurst Inlet is important caribou area.
- Group 2 – Participants agreed that Bathurst/Elu Inlet and Lambert Channel are important bird areas and noted that Lambert Channel area should be extended north up to “Read Island”.
- Group 3 – Kugluktuk participants agreed that this area is important migratory bird habitat. No changes to boundary. People noted that the birds move around. Some people noted that the areas were large but did not propose changes to the boundary

#### b. Do you support the recommended prohibitions and conditions for protecting these migratory bird habitat areas?

➤ ***Some Kugluktuk community participants supported the recommended prohibitions and conditions in the 2016 DNLUP for Bathurst/Elu Inlet and Lambert Channel key migratory bird habitat.***

- Group 1 – Not explicitly noted but participants were supportive of the identification and expansion of the areas in the plan.

- Group 2– Participants supports the protected areas designations and associated prohibitions on Bathurst/Elu Inlet and Lambert Channel migrating birds habitats. Participants also want the same prohibitions on the extended area up to “Read Island”.
- Group 3 – Some participants agreed that uses should be prohibited in this area, others felt the prohibitions were too much. Concern regarding how the prohibitions may affect shipping in Bathurst Inlet for a future mine and concern regarding community resupply ships and how the setbacks might be a problem. Others felt it is good that mining related ships would need to pay attention to the birds/habitat.

## 2. On-Ice Community Travel Routes

Sea ice travel routes have not been identified by Kugluktuk. 2016 DNLUP recommends that the routes be zoned Special Management Area. The travel routes would be protected seasonally from Ukiaq to Upingaaq (October 15 – August 14). During that time most ice-breaking across the routes would be prohibited unless an ice bridging plan is in place to ensure community members are able travel safely.

a. Do you support protecting on-ice travel routes that your community uses?

➤ ***Kugluktuk community participants support the protection of community on ice travel route from ice breaking.***

- Group 1 – Participants supported the protection of on-ice travel routes.
- Group 2 - Participants supported the protection of On Ice travel routes.
- Group 3 – yes, all support SMA

b. Would you make any changes to the on-ice routes that area mapped?

➤ ***Kugluktuk community participants identified additional on-ice travel routes.***

- Group 1 – Participants identified an additional travel route and also suggested that shipping should be restricted for the entire Coronation Gulf in the spring and fall.
- Group 2 – Participants agreed with the mapped route as they are.
- Group 3 – yes a change was made to one route – change because ice is no longer reliable and people use an overland route now for part of the way.

c. Is the correct time frame identified for protecting the sea ice routes in your region?

➤ ***Kugluktuk community participants recommended the dates for protecting sea ice routes in July and August reduced.***

- Group 1 – Participants suggested protection for the spring and fall
- Group 2 – Participants advised that the restriction time be limited from October 15 to June 30
- Group 3 – recommended the season be 01 January – mid May; sea ice freeze up and breakup has changed a lot.

d. Is there anything else NPC should consider for protecting the on-ice routes in your region?

- Group 1 – no further comments
- Group 2 – No further comments
- Group 3 – no further comments

### 3. Hiukitak River Community of Interest

The 2016 DNLUP identifies the Hiukitak River as a Community Area of Interest and recommends that it zoned a Protected Area with prohibited activities. Activities prohibited year-round are: mineral exploration and production, oil and gas exploration and production, quarries, hydroelectric and related infrastructure, and all weather roads.

*Note for participants: There are portions of Inuit Owned Land (surface and subsurface) within the Hiukitak River area, no overlapping mineral rights, and part of the area is in Queen Maud Gulf Migratory Bird Sanctuary.*

a. Do you continue support the area mapped as the Hiukitak River Community Area of Interest?

➤ ***Kugluktuk community participants support the area mapped as the Hiukitak River Community Area of Interest.***

- Group 1 – Participants noted that the whole inlet should be considered for a park, but there should also be opportunities for economic development.
- Group 2 – Participants in this group confirmed that the area is important area for the communities for various values including caribou, even though most people of Kugluktuk do not hunt there
- Group 3 – this is not their area of use but they do support the area mapped

b. Do you still support the described prohibited activities?

➤ ***Some Kugluktuk community participants supported the proposed prohibited use for the Hiukitak River Community Area of Interest in the 2016 DNLUP.***

- Group 1 – no comments
- Group 2 – Participants in this group support the prohibitions in the areas
- Group 3 – yes but concerned about allowing ships to move through Bathurst Inlet. Noted that ships would be allowed as they are not listed on the prohibitions.

c. Should the activities be prohibited year-round or seasonally?

➤ ***Some Kugluktuk community participants recommended that activities be prohibited year-round.***

- Group 1 – no comments
- Group 2 – Participants in this group support the currently proposed prohibitions
- Group 3 – as the community requested – year round

#### 4. Caribou Sea Ice Crossing Area

Do you continue to support restrictions on ice-breaking in Coronation Gulf during the two seasons when caribou migrate across the ice?

- a. Is the caribou sea ice crossing area mapped correctly? If No ... then ... describe what changes should be made.

➤ ***Kugluktuk community participants agreed with the identified Dolphin Union caribou sea ice crossing area and identified additional areas.***

- Group 1 – Participants agreed with the mapped area, but added an area near the community
- Group 2 – Participants agreed with the mapped areas and also identified that the sea ice crossing should be expanded up to Bathurst Inlet.
- Group 3 – Yes mapping looks fine

- b. Are the appropriate time frames (October 15- February 15 and April 1- May 31) identified for the Dolphin Union caribou herd migration across the sea ice?

➤ ***Kugluktuk community participants agreed with the identified dates for migration across the sea ice for the Dolphin Union caribou.***

- Group 1 – Participants agreed with the identified dates
- Group 2 – Participants agreed with the proposed dates
- Group 3 – yes time frame appropriate

- c. Is there anything else NPC needs to know for protecting the Caribou Sea Ice Crossings or how it may be used by project proponents?

- Group 1 – no further comments
- Group 2 – no other comments
- Group 3 – no further comments

#### 5. Caribou Fresh Water Crossing

There are Caribou Fresh Water Crossings near your community (see map). The 2016 DNLUP recommends that the fresh water crossings be zoned Protected Areas with year-round restrictions on mining, oil & gas exploration, roads, hydro-electrical infrastructures, and quarries.

*Note for participants: There are parcels of Inuit Owned Land (surface and subsurface) within the areas and overlapping mineral rights.*

- a. Are the Caribou Fresh Water Crossing areas mapped correctly? If No ... then ... describe what changes should be made.



- ***Kugluktuk community participants agreed with the identified caribou freshwater crossing locations and identified additional areas, but some participants noted that the buffer should be reduced to 500-1000 metres.***

- Group 1 – Participants agreed with the mapped areas and also identified an additional water crossing.
- Group 2 – Participants agreed with the mapped areas and also identified one additional water crossing on a river by “First Tree”.
- Group 3 – No areas are not mapped correctly. The buffer is too large around the point locations. Buffer should be between 500-1000 metres. Caribou cross lakes at narrows and same for rivers.

- b. Do you agree it is necessary to restrict certain uses and activities like mining, oil & gas, roads, hydro-electric infrastructure, and quarries in Caribou Fresh Water Crossing areas?

- ***Some Kugluktuk community participants agreed with the proposed restrictions for caribou freshwater crossings, some suggested seasonal restrictions, and some suggested just identifying the areas as Valued Components.***

- Group 1 – Participants suggested that seasonal restrictions in the fall and spring would be appropriate.
- Group 2 – Participants in this group supported the proposed activities restrictions
- Group 3 – some people felt that prohibitions were not needed for freshwater crossings, especially if a crossing is on IOL. Most fresh water crossings are on or near IOL. The group agreed that Protected Area was not required and decided that VEC is a better designation for caribou crossings in their area.

- c. Are there other uses or activities that should be restricted?

- Group 1 – no comments
- Group 2 – No comments
- Group 3 – no comments

- d. If restrictions on uses or activities occur, should they be year-round or seasonal? If seasonal, what time frame would you recommend?

- ***Some Kugluktuk community participants recommended year round prohibitions for caribou freshwater crossings, some suggested seasonal restrictions, and some suggested just identifying the areas as Valued Components.***

- Group 1 – Participants suggested that seasonal restrictions in the fall and spring would be appropriate.
- Group 2 – This group supported year round prohibitions
- Group 3 – no restrictions, use VEC instead

- e. Is there anything else NPC needs to know for protecting the Caribou Fresh Water Crossings or how it may be used by project proponents?

- Group 1 – no further comments
- Group 2 – no further comments
- Group 3 – no further comments

## 6. Caribou Calving Areas

There is Caribou Calving habitat near your community used by the Bluenose East and Bathurst caribou herds (see map). The 2016 DNLUP identified Caribou Calving Areas as sensitive habitat and recommends that these areas be zoned Protected Areas with year-round restrictions on mining, oil & gas exploration, roads, hydro-electrical infrastructures, and quarries.

*Note for participants: There are parcels of Inuit Owned Land (surface and subsurface) within the areas and overlapping mineral rights.*

- Are the Caribou Calving areas mapped correctly? If No ... then ... describe what changes should be made.

➤ ***Kugluktuk community participants agreed with the caribou calving areas identified in the 2016 DNLUP but noted additional areas that should also be included.***

- Group 1 – Participants agreed with the mapped calving areas and also identified an extension to the north for the Bluenose-East herd.
- Group 2 – Participants agreed with the mapped calving areas
- Group 3 – No. There is an alternate calving area on the east side of Bathurst Inlet. This was mapped. (Request from one person to receive the DOE submission that provided the delineation for caribou calving habitat).

- Do you agree it is necessary to restrict certain uses and activities like mining, oil & gas, roads, hydro-electric infrastructure, and quarries in Caribou Calving areas?

➤ ***Some Kugluktuk community participants agreed that activities like mining, oil & gas, hydro-electric infrastructure, and quarries should be prohibited in caribou calving grounds but some participants recommended seasonal restrictions would be more appropriate.***

- Group 1 – Participants suggested year round restrictions would be best but recognized it is hard to protect the whole area.
- Group 2 – Participants in this group agreed with the proposed activities restrictions
- Group 3 – No year round prohibitions are not required. Seasonal restrictions are more appropriate: stop all /any activities if caribou are present for the calving period (see DOE definition for calving dates)

- Are there other uses or activities that should be restricted?

- Group 1 – no comments
- Group 2 – no comments
- Group 3 – no comments

- d. If restrictions on uses or activities occur, should they be year-round or seasonal? If seasonal, what time frame would you recommend?

➤ ***Some Kugluktuk community participants agreed that restrictions on caribou calving areas should be year-round, while other participants recommended seasonal restrictions.***

- Group 1 – Participants suggested year round restrictions would be best but recognized it is hard to protect the whole area.
- Group 2 –Participants in this group supported year round prohibitions
- Group 3– Kugluktuk participants agreed that the restrictions should be seasonal – see above.

- e. Is there anything else NPC needs to know for protecting the Caribou Calving habitat or how it may be used by project proponents?

- Group 1 – Participants noted that KIA may have records of calving grounds, and also that Inuit Impact and Benefit Agreements (IIBAs) for projects talk about caribou protection in detail.
- Group 2 – no comments
- Group 3 – no comments

## **7. Caribou Post Calving Areas**

There is Caribou Post-Calving habitat near your community used by the Bluenose East and Bathurst caribou herds (see map). The 2016 DNLUP identified Caribou Post-Calving Areas as sensitive habitat and recommends that these areas be zoned Protected Areas with year-round restrictions on mining, oil & gas exploration, roads, hydro-electrical infrastructures, and quarries.

*Note for participants: There are parcels of Inuit Owned Land (surface and subsurface) within the areas and overlapping mineral rights.*

- a. Are the Caribou Post-Calving areas mapped correctly? If No ... then ... describe what changes should be made.

➤ ***Kugluktuk community participants agreed with the caribou post-calving areas identified in the 2016 DNLUP but noted additional areas that should also be included.***

- Group 1 – Participants noted that collaring data are useful for determining these areas.
- Group 2 – Participants agreed with the mapped post-calving areas
- Group 3 – No, the Bluenose East post-calving area was enlarged to include the area to the NW of the existing polygon.

- b. Do you agree it is necessary to restrict certain uses and activities like mining, oil & gas, roads, hydro-electric infrastructure, and quarries in Caribou Post-Calving areas?

➤ ***Some Kugluktuk community participants agreed that activities like mining, oil & gas, hydro-electric infrastructure, and quarries should be prohibited in caribou post-calving areas but some participants recommended seasonal restrictions would be more appropriate.***

- Group 1 – Participants suggested year round restrictions would be best but recognized it is hard to protect the whole area.
  - Group 2 – Participants in this group agreed with the proposed activities restrictions
  - Group 3 - No year round prohibitions are not required. Seasonal restrictions are more appropriate: stop all /any activities if caribou are present for the calving period (see DOE definition for post calving dates)
- c. Are there other uses or activities that should be restricted?
- Group 1 – no comments
  - Group 2 – no comments
  - Group 3 – no comments
- d. If restrictions on uses or activities occur, should they be year-round or seasonal? If seasonal, what time frame would you recommend?

➤ ***Some Kugluktuk community participants agreed that restrictions on caribou post-calving areas should be year-round, while other participants recommended seasonal restrictions.***

- Group 1 – Participants suggested year round restrictions would be best but recognized it is hard to protect the whole area.
  - Group 2 –Participants in this group supported year round prohibitions in post- calving area
  - Group 3 – Kugluktuk participants recommended that the restrictions should be seasonal – see GN dates for post-calving.
- e. Is there anything else NPC needs to know for protecting the Caribou Post-Calving habitat or how it may be used by project proponents?
- Group 1 – no comments
  - Group 2 – no comments
  - Group 3 – no comments

## 8. Final wrap up Question?

Is there anything else you would like to discuss today?

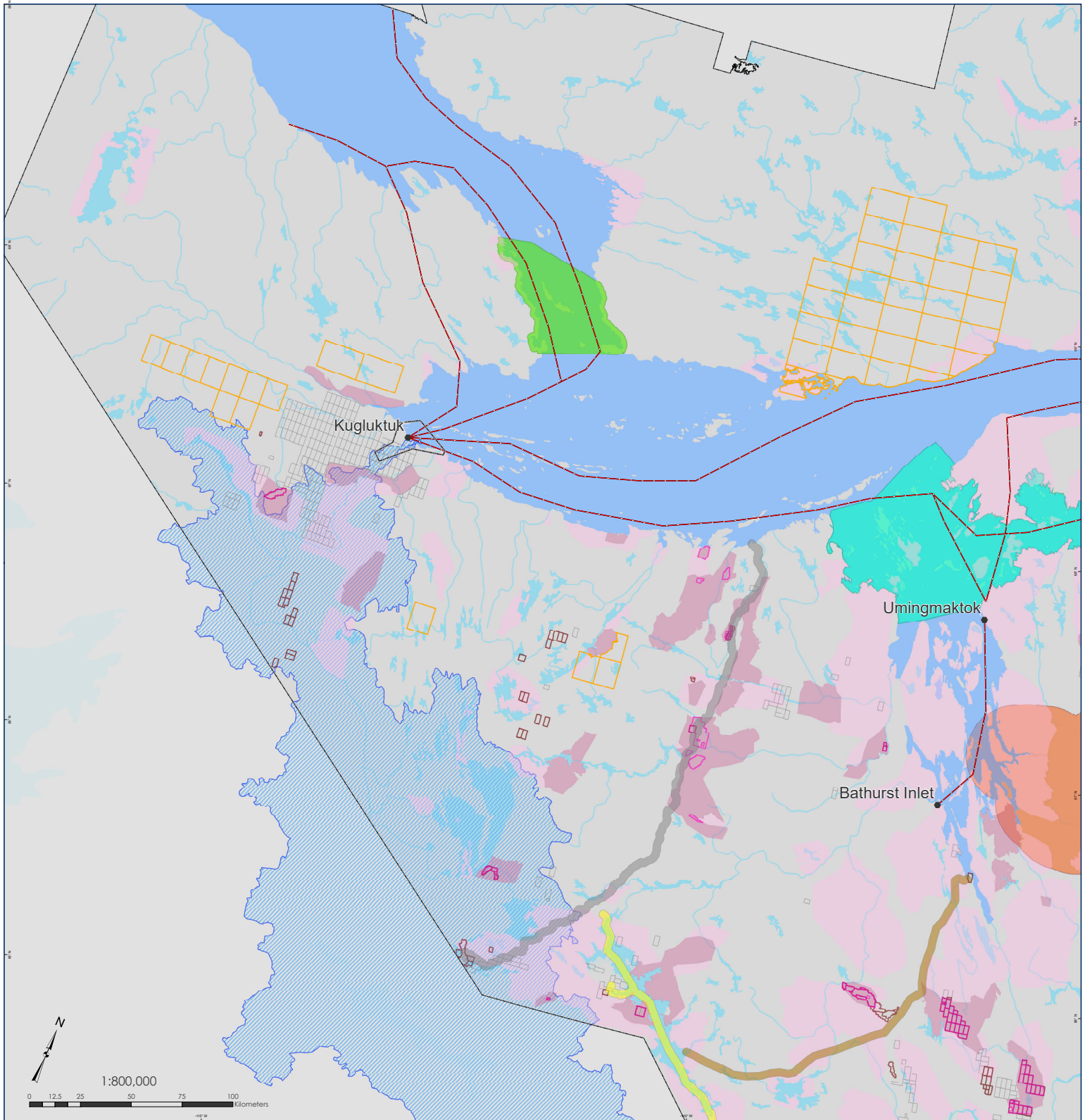
➤ ***Kugluktuk community participants identified fishing areas that should be protected, as well as a polynya and an area with hydro-electric potential.***

- Group 1 – Participants identified a polynya that should be protected and an area on the Coppermine River where hydro-electric development should be supported. Participants also noted the need for economic development. Young people need work to be able to buy equipment and go hunting.
- Group 2 - Participants in this group identified an important fishing rivers important to the community that they would like protected for their community use.
- Group 3 – question about transboundary impacts to the Coppermine River (watershed). Mine developments upstream in NWT was a concern for one of the participants. Question – does NPC intervene during project development EA if project in NWT?

## Appendix A: Breakout Group Reference Maps

# KUGLUKTUK

Migratory Birds, Watershed, Heritage River, On-Ice Travel, & Area of Interest

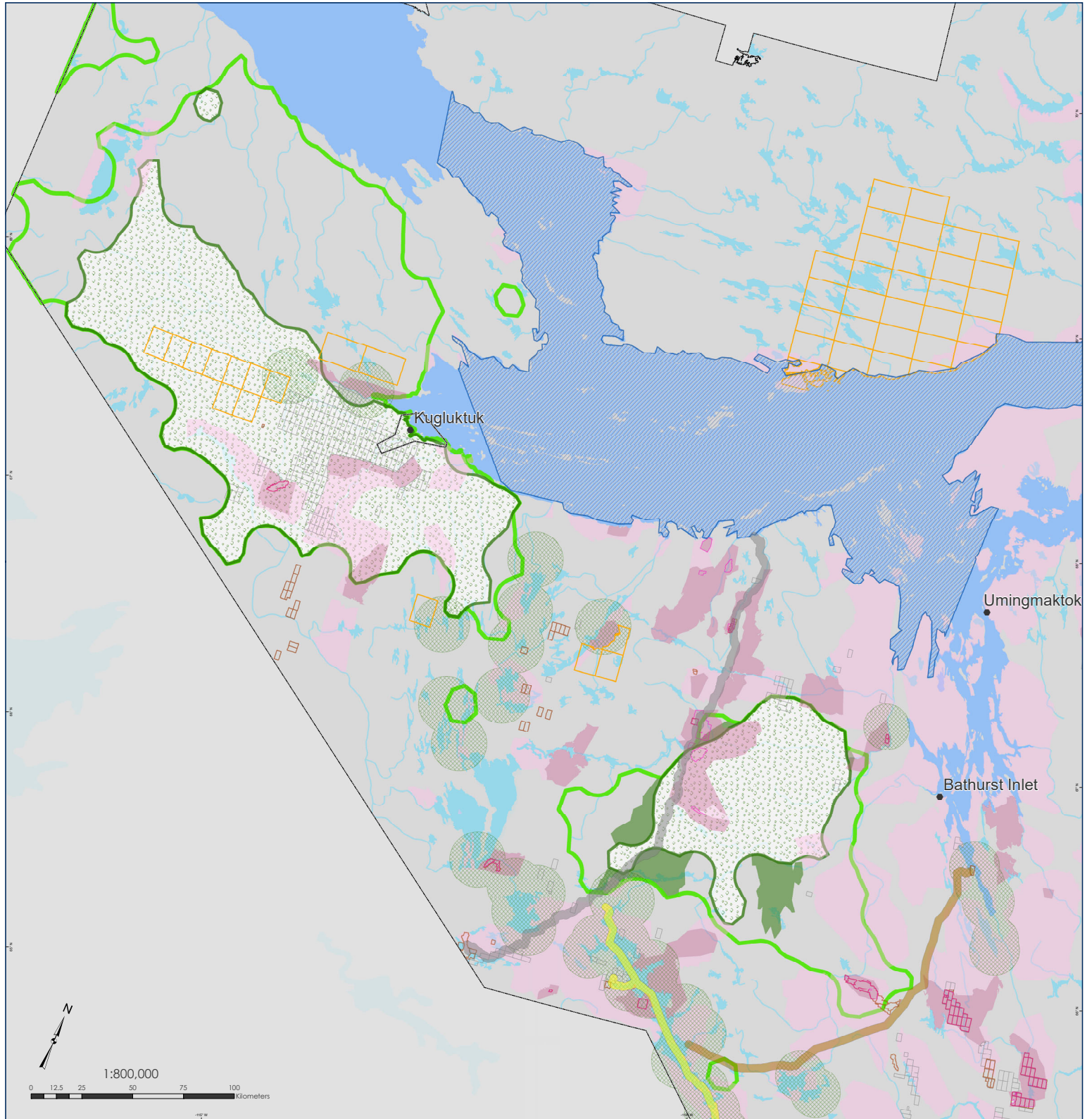


- |  |  |
|--|--|
| <span style="display: inline-block; width: 15px; height: 10px; background-color: #00FFFF; border: 1px solid black;"></span> Bathurst/Elu Inlet Migratory Bird Habitat (PA)   | <span style="display: inline-block; width: 15px; height: 10px; border: 1px solid pink;"></span> NTI Agreements Active    |
| <span style="display: inline-block; width: 15px; height: 10px; background-color: #00FF00; border: 1px solid black;"></span> Lambert Channel Migratory Bird Habitat (PA)  | <span style="display: inline-block; width: 15px; height: 10px; border: 1px solid orange;"></span> Prospect Permit 2019   |
| <span style="display: inline-block; width: 15px; height: 10px; background-color: #FFA500; border: 1px solid black;"></span> Hiukitak River Area of Interest (PA)   | <span style="display: inline-block; width: 15px; height: 10px; border: 1px solid brown;"></span> Mineral Lease 2019      |
| <span style="display: inline-block; width: 15px; height: 10px; border-bottom: 1px dashed red;"></span> On Ice Transportation Corridor (SMA)  | <span style="display: inline-block; width: 15px; height: 10px; border: 1px solid grey;"></span> Mineral Claim 2019       |
| <span style="display: inline-block; width: 15px; height: 10px; background: repeating-linear-gradient(45deg, transparent, transparent 2px, blue 2px, blue 4px); border: 1px solid black;"></span> Community Watershed & Coppermine Canadian Heritage River (VSEC) | <span style="display: inline-block; width: 15px; height: 10px; background-color: #FFB6C1;"></span> IOL Surface Rights    |
| <span style="display: inline-block; width: 15px; height: 10px; background-color: #FFFF00; border: 1px solid black;"></span> Winter Road (VSEC)   | <span style="display: inline-block; width: 15px; height: 10px; background-color: #FFB6C1;"></span> IOL Subsurface Rights |
| <span style="display: inline-block; width: 15px; height: 10px; background-color: #808080; border: 1px solid black;"></span> Proposed Road (VSEC)   |  |
| <span style="display: inline-block; width: 15px; height: 10px; background-color: #8B4513; border: 1px solid black;"></span> Speculative Road (VSEC)  |  |



# KUGLUKTUK

## Caribou Habitat: Protected & Special Management Areas



- Calving Area (PA)
- Post Calving Area (PA)
- Key Access Corridor (PA)
- Water Crossing (PA)
- Dolphin Union Caribou Sea Ice Crossing (SMA)

- NTI Agreements Active
- Prospect Permit 2019
- Mineral Lease 2019
- Mineral Claim 2019
- IOL Surface Rights
- IOL Subsurface Rights

- Winter Road (VSEC)
- Proposed Road (VSEC)
- Speculative Road (VSEC)

## Appendix B: Breakout Group Map Revisions

Map 1: Additional Migratory Bird Habitat

Map 2: Additional On Ice Travel Routes

Map 3: Additional Dolphin Union Caribou Sea Ice Crossing Areas

Map 4: Additional Caribou Fresh Water Crossing Areas

Map 5: Additional Caribou Calving Habitat

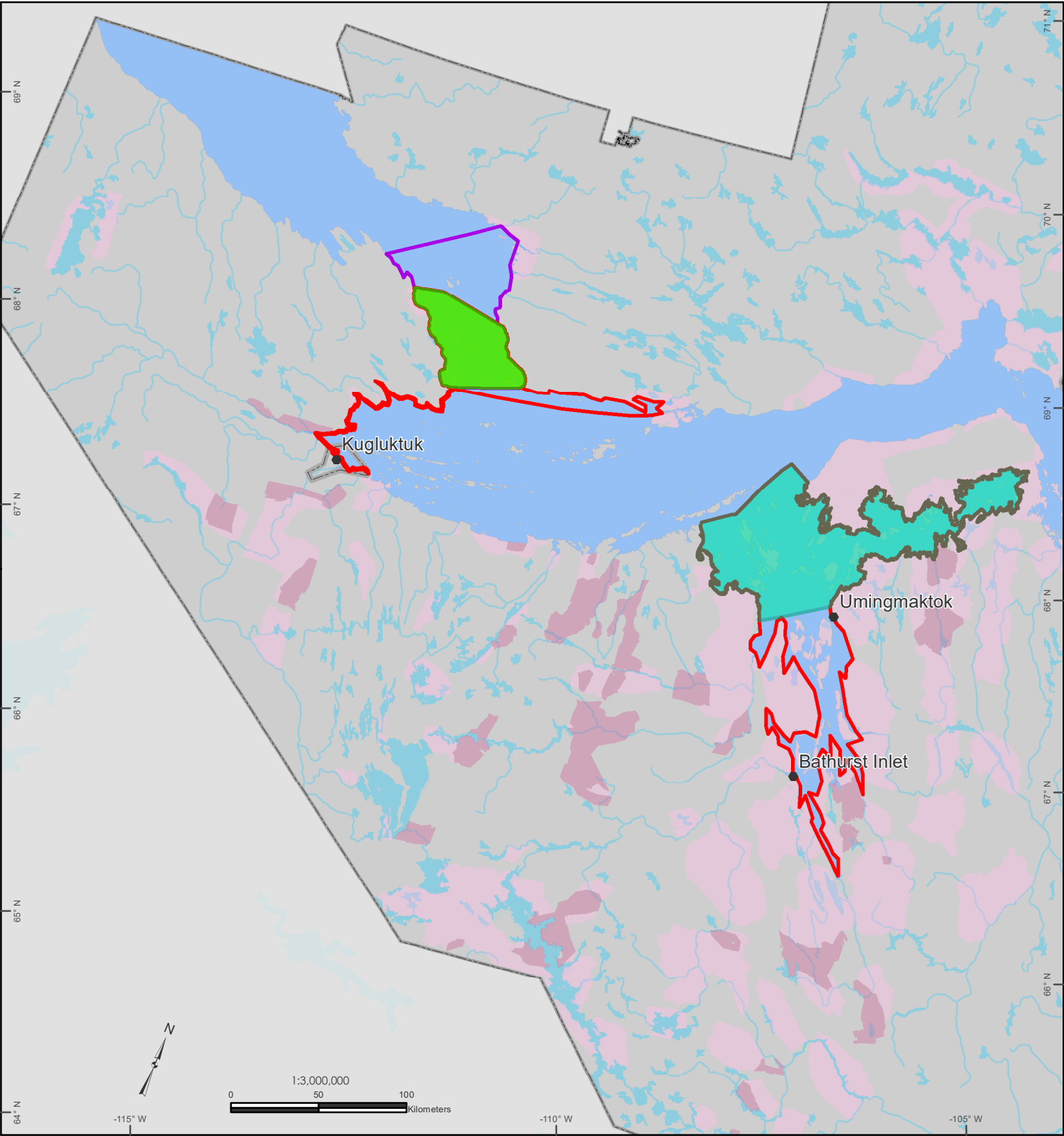
Map 6: Additional Caribou Post Calving Habitat

Map 7: Arctic Char River, Polynya, and Potential Hydro-Electric Areas



Map 1

KUGLUKTUK  
Additional Migratory Bird Habitat



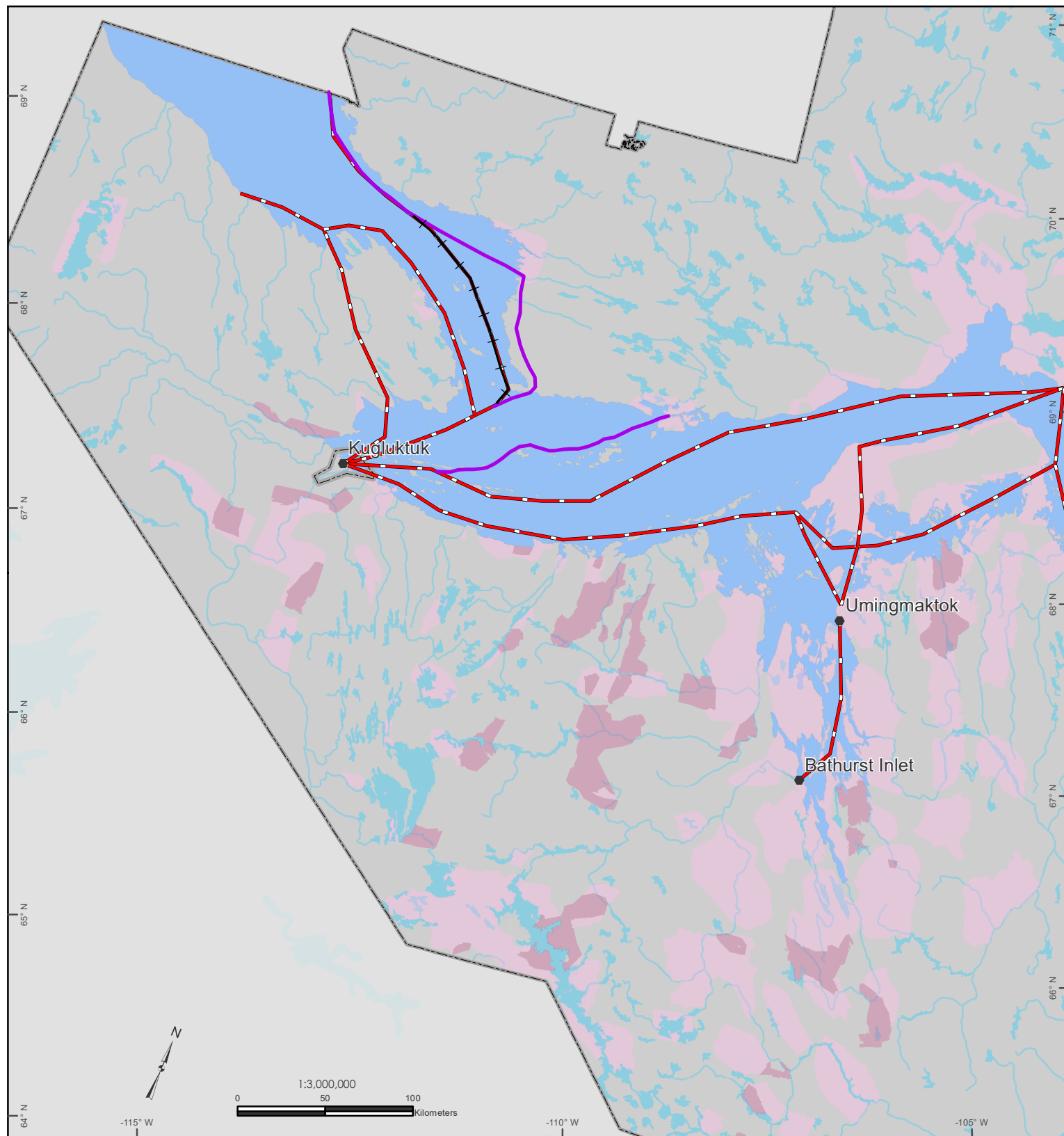
- Lambert Channel Migratory Bird Habitat DNLUP 2016
- Bathurst Inlet (Elu) Migratory Bird Habitat DNLUP 2016
- Group 1
- Group 2

- IOL Surface Rights
- IOL Subsurface Rights

## Map 2

## KUGLUKTUK

### Additional On Ice Travel Routes



— On Ice Transportation Corridor DNLUP 2016

— Delete Group 3

— New Groups 1 & 3

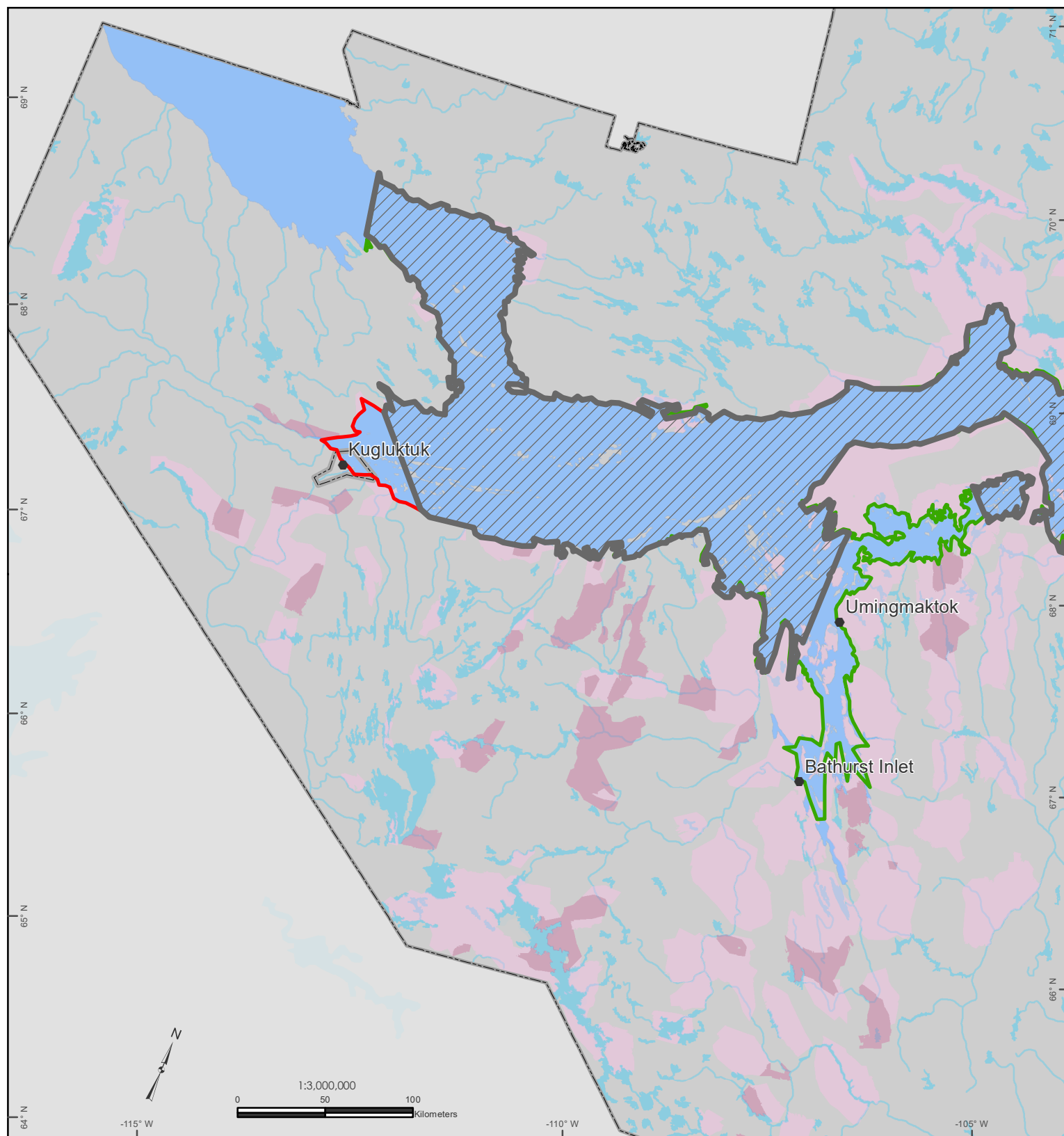
— IOL Surface Rights

— IOL Subsurface Rights

## Map 3

## KUGLUKTUK

### Additional Dolphin Union Caribou Herd Sea ice Crossing Areas



 Dolphin Union Caribou Herd Sea Ice Crossing DNLUP 2016

 Group 1

 Group 2

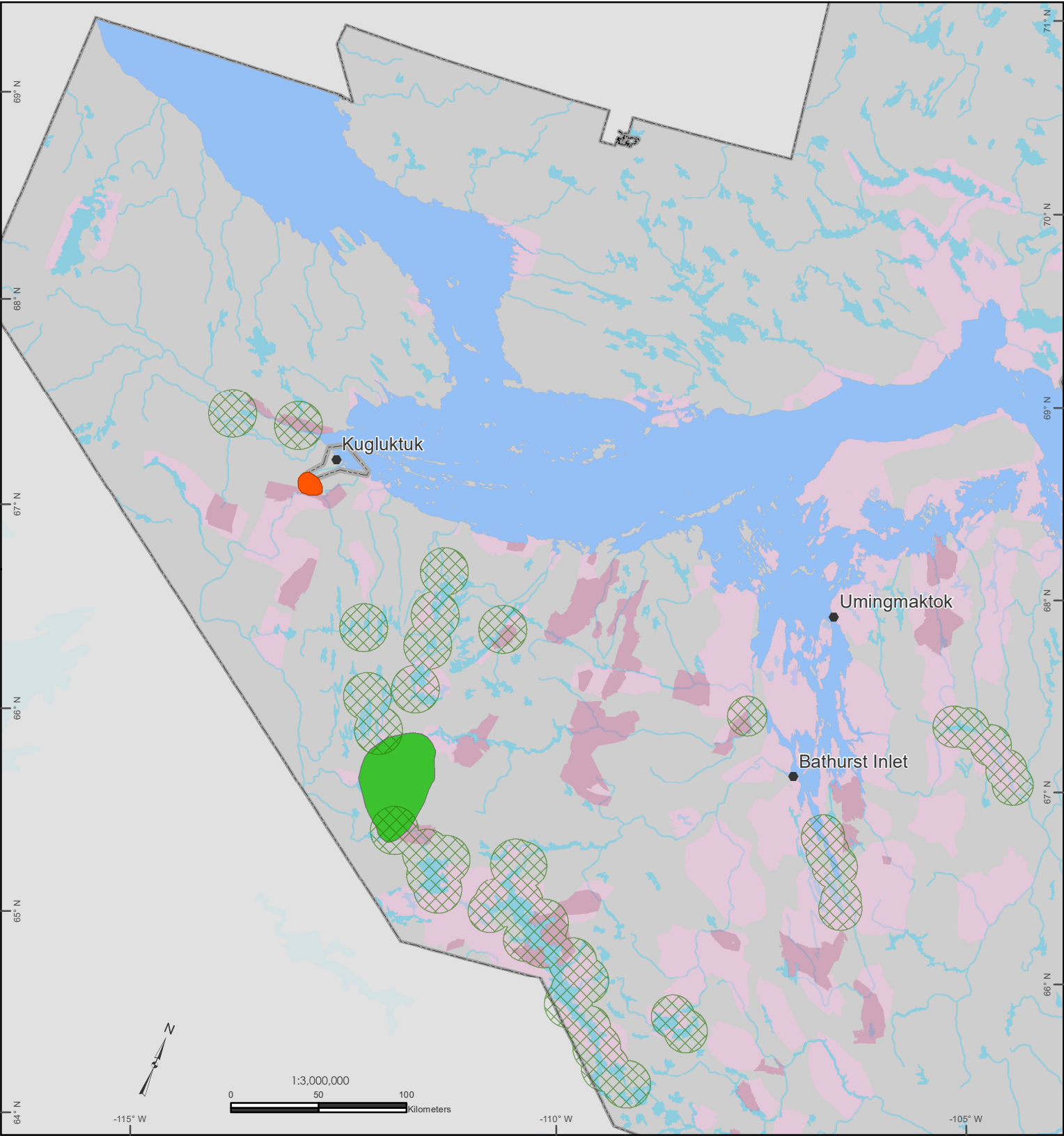
 IOL Surface Rights

 IOL Subsurface Rights

Map 4

KUGLUKTUK

Additional Caribou Fresh Water Crossing Areas

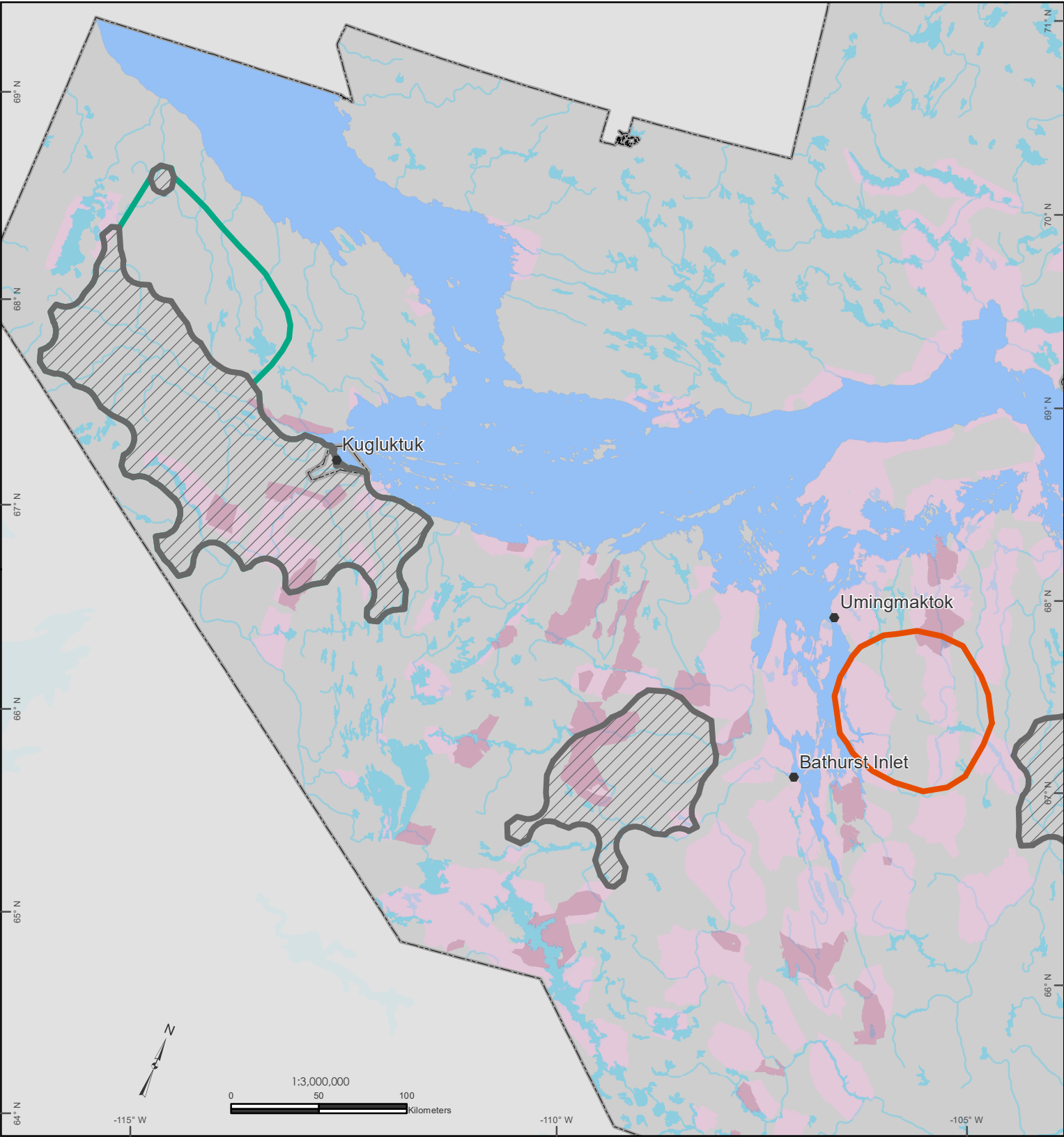


- Caribou Fresh Water Crossing DNLUP 2016
- Group 1
- Group 2

- IOL Surface Rights
- IOL Subsurface Rights

Map 5

KUGLUKTUK  
Additional Caribou Calving Habitat



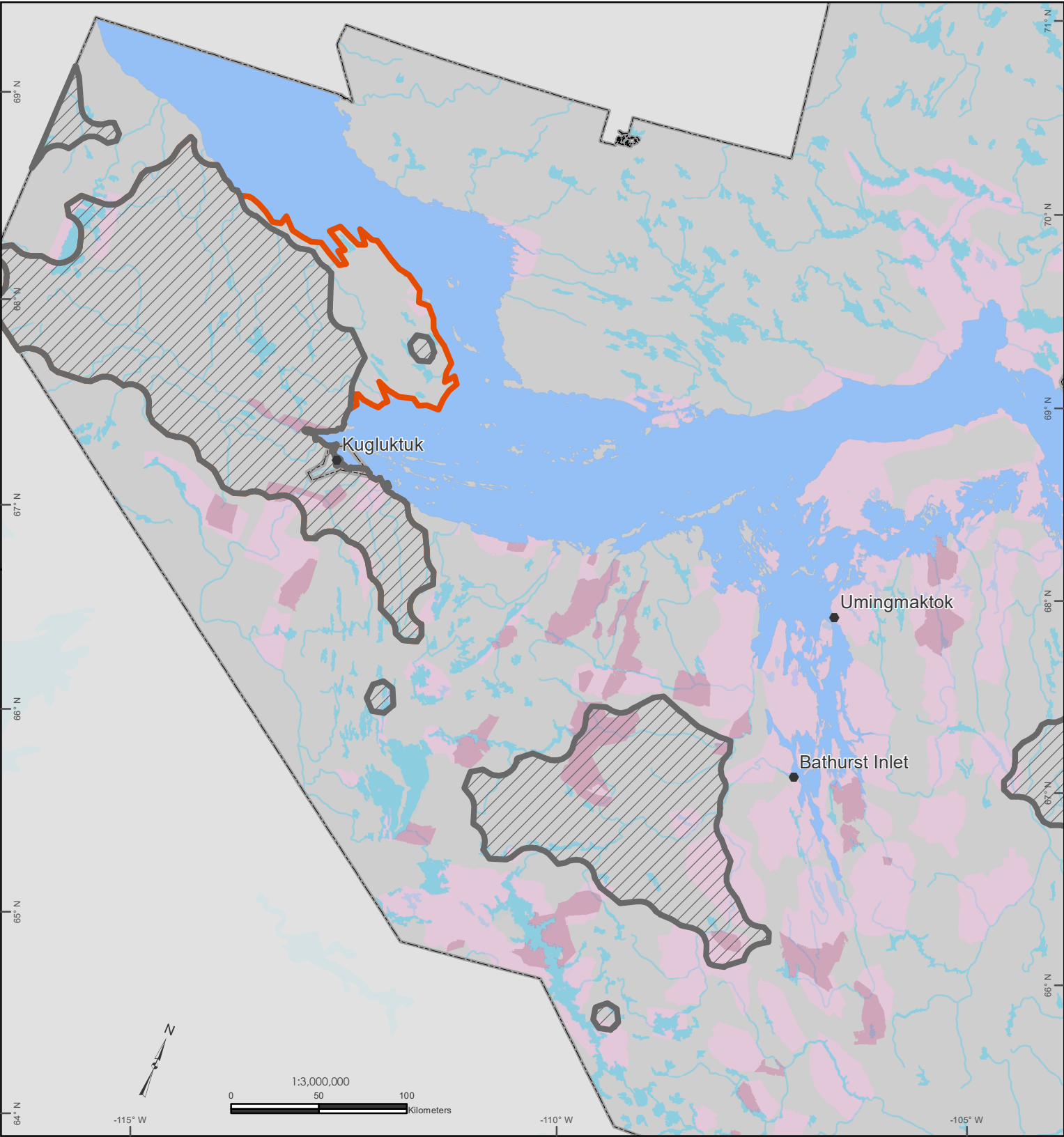
- Calving Core Area DNLUP 2016
- Bluenose Herd Group 1
- Bathurst Herd Group 3

- IOL Surface Rights
- IOL Subsurface Rights



Map 6

KUGLUKTUK  
Additional Caribou Post Calving Area



- Post Calving Core Area DNLUP 2016
- Group 3

- IOL Surface Rights
- IOL Subsurface Rights

## Map 7

## KUGLUKTUK

### Arctic Char River, Polynya, and Potential Hydro-Electric Areas



- Arctic Char River Group 2
- Polynya Group 1
- Potential Hydro-Electric Group 1

- IOL Surface Rights
- IOL Subsurface Rights