



ᓄᓇᑭᓴᑦ ᐸᓴᓇᐃᓯᓴᑦ
Nunavunmi Parnaiyiit
Nunavut Planning Commission
Commission d'Aménagement du Nunavut

Summary of Community Meetings on the 2016 Draft Nunavut Land Use Plan

RANKIN INLET

January 22, 2020



Contents

1. Introduction	3
1.1 Context.....	3
1.2 Purpose	3
1.3 Methodology.....	3
1.4 Public Awareness	4
1.5 Follow Up	4
2. Breakout Group Questions and Participant Responses.....	5
1. Point Locations Identified by Heritage River Management Plans	5
2. Community areas of Interest: Diana River	5
3. Community Areas of Interest: Corbett Inlet	6
4. Caribou Calving Areas	7
5. Caribou Post Calving Areas	8
6. Caribou Fresh Water Crossing.....	9
7. Final wrap up Question.....	11
Appendix A: Breakout Group Reference Maps.....	12
Appendix B: Breakout Group Map Revisions.....	15
Map 1: Additional Community Area of Interest Area – Diana River	
Map 2: Community Use Areas (Fishing, Hunting, Berry Picking)	
Map 3: Additional Heritage Area (Kazan River) & Burial Grounds	
Map 4: Additional Caribou Calving Habitat	
Map 5: Additional Caribou Post Calving Habitat	
Map 6: Additional Caribou Fresh Water Crossing Areas	

1. Introduction

1.1 Context

The Nunavut Planning Commission prepared a 2016 Draft Nunavut Land Use Plan (2016 DNLUP) for public comment and consideration. Following the release of the 2016 DNLUP, the Commission received a significant amount of written comments and oral feedback during an in-person public hearing in Iqaluit in March 2017 for communities in the Qikiqtani region as well as transboundary Nunavik communities. In August 2019, the Commission received funding to complete consultations on the 2016 DNLUP by holding Information Sessions under rule 17 of the Commission's new Rules for Public Proceedings in the Kivalliq and Kitikmeot regions.

1.2 Purpose

The purpose of the Information Sessions was to hear the views of community residents on the 2016 DNLUP. This report summarizes feedback received during the Information Sessions held in Rankin Inlet and is prepared under rule 15(5) of the *Rules for Public Proceedings*. The purpose of the report is to inform revisions to the 2016 DNLUP ensuring that the plan reflects the priorities and values of residents.

It is important to note that the information contained in this community report will be considered in conjunction with all other feedback when revising the 2016 DNLUP.

1.3 Methodology

During the community visit the following events took place:

- **Elected Officials Meeting;** (10:00-11:00) Attended by Hamlet council and HTO members
 - The Commission Chairperson and staff met with the Hamlet Council and Hunters and Trappers Organization in Council chambers to provide a brief overview of the NPC's role and responsibility in Nunavut's regulatory system, process history, and preparation for the Information Sessions to be held in the afternoon and evening. An opportunity for questions and answers was provided, but no formal feedback on the 2016 DNLUP was provided or recorded during this meeting.
- **Afternoon Information Session;** (1:30 to 4:30) Attended by approximately 15 people, held 1 breakout group.
 - **Posters;** Multi-lingual posters for each chapter of the Draft Plan were posted in the Community Hall for review.
 - **Presentation;** The Commission chairperson and staff provided an introductory presentation that included a brief overview of some background information, the Commission role and responsibility, role in Nunavut's regulatory system, process history, 2016 DNLUP chapter overview, and preparation for breakout groups including the types of questions that would be asked.
 - **Breakout Groups;** Held breakout group discussions to review community-specific maps (see Appendix A) and ask questions on priority issues (see section 2). Recorded oral feedback and mapped suggested revisions and additions to geographic boundaries (see Appendix B)

- **Evening Information Session;** (6:30 to 9:30) Attended by approximately 40 people, held 2 breakout groups.
 - Repeat same format as afternoon session

1.4 Public Awareness

Letters of invitation were sent to the Mayor and Council and HTO in advance of the NPC's visit to request a meeting with elected officials, advise of the public meetings and to encourage participation. Follow up phone calls were also made. Public notice of the meetings was provided in the following ways:

- **Nunatsiaq News;** notice of community meetings was posted in the newspaper in advance of the meetings.
- **Community radio;** notices were read by the hosts.
- **Community bulletin boards;** notices were posted on bulletin boards around the community in advance of the meetings.
- **Facebook;** information was posted on the NPC's Facebook page as well as on local community group pages in advance of the meetings.
- **nunavut.ca;** the schedule of community visits, the Draft Plan, and supporting information was available on the Commission's website.

1.5 Follow Up

This summary report will be provided to the Hamlet Council and HTO for review and posted on the NPC's Public Registry for consideration by all participants who may provide comments on it until February 28, 2020. The report and any comments on it will be considered by Commissioners when revising the 2016 DNLUP along with all other feedback that has been received.

2. Breakout Group Questions and Participant Responses

This section summarizes the notes and questions that were used by NPC staff during the breakout groups and well as the participant responses to each question.

1. Point Locations Identified by Heritage River Management Plans

The Kazan Heritage River Management Plan identifies locations along the river that are important for people or the environment, or both, and recommend that they be protected. The NLUP, 2016 draft, has incorporated these small locations and placed strong protections on them, preventing most development.

a) Is this the right approach?

➤ ***Rankin Inlet community participants support the protection of point locations on Kazan River.***

- Group 1 – Agreed the points should be protected and Rankin should support what the residents of Baker have said should be protected.
- Group 2 – group agreed – no additional comments
- Group 3 – Although the area is far away, participants believe people of Baker Lake know the area well and support them in every way to have it protected.

b) Do you agree with the locations identified?

➤ ***Rankin Inlet community participants agreed with the identified locations and added another location.***

- Group 1 – Group recommended that the heritage areas be mapped at a larger scale (e.g. 1:50,000) to better understand the location and extent of each site.
- Group 2 – add one location in harbor of large lake – camping, fishing hunting as another potential heritage area
- Group 3 – Although the area is far away, participants believe people of Baker Lake know the area well and support them in every way to have it protected.

2. Community areas of Interest: Diana River

The Rankin Inlet community identified Diana River as important, and recommended protections. These protections currently include a ban on roads, which would block the Kivilliq-Manitoba road were it to be built.

a) Do you agree with the location of the Diana River protected area?

➤ ***Rankin Inlet community participants agree with the identified area and some participants suggested an additional area also be included.***

- Group 1 –Yes
- Group 2 – recommended a change in the boundary that included Diana Lake.
- Group 3 – participants agreed with the boundary for the Diana River.

b) Do you agree with the proposed regulations for Diana River, or should they be amended?

➤ ***Rankin Inlet community participants support restrictions on mineral exploration, oil and gas, quarries, but support roads in the area and some support hydro-electric.***

- Group 1 – Recommended modification of prohibited activities. To allow roads, bridges, and hydro-electric & related infrastructure and to maintain prohibitions on mineral exploration and production, oil and gas exploration and production, and quarries.
- Group 2– forbid activities – 2 people agree \\\ but if ever going to be a road to MB then need to allow it and will need to allow bridge(s) – 2 people agree\\\ comment there is already a municipal road to the area; question about the road marked on map, is it not possible to use a route that goes around Diana River AOI; people would consider one road to connect to Manitoba and one hydro-line, not multiples – all agreed;
- Group 3 – Participants support a road in the area and want to see a bridge over the river. However, if a road is built towards Baker Lake, it should stay far away from the Diana River.

3. Community Areas of Interest: Corbett Inlet

The Rankin Inlet community identified Corbett Inlet as important, and recommended protections. Because the boundaries shown, and the proposed regulations were not specified, NPC identified this area as a VEC, with no restrictions.

a) Do you agree with the location and boundaries of the Corbett Inlet area of interest?

➤ ***Some Rankin Inlet community participants supported the identified area but suggested expansions to the area and identified several additional areas.***

- Group 1 – HTO with DFO have done studies in the Corbett Inlet area and have information that can be used to better delineate the area of interest. HTO to provide this information in their 2020 submission.
- Group 2– need a more specific area for the AIO (vs the current oval and notes that there are many other valued areas not mapped); Recommended enlargement of the Corbett AOI – to include char rivers and general use, historic use, burial grounds, caribou migrate thru the area in summer; Added additional AOI along Chesterfield Inlet (the water body); Added a burial grounds south of Chesterfield Inlet; Marble island and other islands off shore of Rankin for whale hunting, goose hunting; many islands offshore for whale hunting; marked a lake where wolf, muskox and wolverine hunting; added char fishing south of Chesterfield Inlet– Josephine lake; Cross Bay – fish caribou char = this is on chesterfield inlet near baker lake; plus additional char an caribou areas; added skidoo trail on sea ice to Whale Cove from Rankin (designated trails for winter and summer to Whale Cove, Chesterfield and one trail to Baker for summer and winter); marked seal hunting area offshore from Rankin – skidoo area vs a route;
- Group 3 – participants agreed with the boundary for Corbett Inlet.

b) Do you agree with the proposed identification of Corbett Inlet as a VEC? If not, what would be preferable?

➤ ***Some Rankin Inlet community participants suggested restrictions for the area.***

- Group 1 – Corbett Inlet area has important values but other locations nearby have important hunting and community values as well. No additional areas were mapped.
- Group 2 – Suggestions that there should be no activities in the important AOI and should be protected. With potential seasonal restrictions for some of the new areas.
- Group 3 – Some participants would like to see the shoreline area protected from exploration. Concern noted with helicopters as well. Other participants noted the need to have a balance and don't want to lock everything off from development.

4. Caribou Calving Areas

There is Caribou Calving habitat near your community (see map). The 2016 NLUP identified Caribou Calving Areas as sensitive habitat and recommends that these areas be zoned Protected Areas with year-round restrictions on mining, oil & gas exploration, roads, hydro-electrical infrastructures, and quarries. *There are parcels of Inuit Owned Land (surface and subsurface) within the areas and overlapping mineral rights.*

- a. Are the Caribou Calving areas mapped correctly? If No ... then ... describe what changes should be made.

➤ ***Some Rankin Inlet community participants agreed with the identified calving areas and some suggested the mapping needs to be updated.***

- Group 1 – Mapped calving areas are outdated; data used for the maps are from before 2012. HTO will be providing new calving area boundaries in their submission, based on Inuit knowledge. There has been a northward expansion of the calving areas of the Qamanirjuaq herd. Question asked: can caribou habitat area boundaries be amended later on, and they are informed yes. Also noted the Government of Nunavut is expect to publish updated caribou habitat maps soon.
- Group 2 – noted that areas should be updated but there is general agreement that the area delineated reflects where caribou calve
- Group 3 – Participants agreed with the identified calving areas.

- b. Do you agree it is necessary to restrict certain uses and activities like mining, oil & gas, roads, hydro-electric infrastructure, and quarries in Caribou Calving areas?

➤ ***Rankin Inlet community participants agreed that activities like mining, oil & gas, all-weather roads, hydro-electric infrastructure, and quarries should be prohibited in caribou calving grounds.***

- Group 1 – Yes, maintain strong restrictions.
- Group 2 – Yes, all agree
- Group 3 – Participants agreed that activities should be restricted in calving areas. Noted that activities at Meliadine are already affecting caribou and exploration shouldn't be allowed in the calving grounds.

- c. Are there other uses or activities that should be restricted?

➤ ***Rankin Inlet community participants.***

- Group 1 – No comments provided.
- Group 2– No additional information provided
- Group 3 – No comments

- d. If restrictions on uses or activities occur, should they be year-round or seasonal? If seasonal, what time frame would you recommend?

➤ ***Rankin Inlet community participants recommended that restrictions on caribou calving areas should be year-round.***

- Group 1 –Year-round
- Group 2– year-round
- Group 3 – Year-round

5. Caribou Post Calving Areas

There is Caribou Post-Calving habitat near your community (see map...*note the many outliers of this polygon type*). The 2016 DNLUP identified Caribou Post-Calving Areas as sensitive habitat and recommends that these areas be zoned Protected Areas with year-round restrictions on mining, oil & gas exploration, roads, hydro-electrical infrastructures, and quarries. *There are parcels of Inuit Owned Land (surface and subsurface) within the areas and overlapping mineral rights.* Note that the proposed Kiv-Manitoba Road passes through an extensive portion of this area.

- a. Are the Caribou Post-Calving areas mapped correctly? If No ... then ... describe what changes should be made.

➤ ***Some Rankin Inlet community participants agreed with the identified post-calving areas, some suggested the mapping needs to be updated, and some identified additional areas.***

- Group 1 – Maps are outdated because they are based on older information (<2012). New boundaries are available from HTO and will be provided in a written submission. There has been a northward expansion toward Chesterfield Inlet (the water body) of the post calving areas of the Qamanirjuaq (two areas identified on map 5 – A: Concentrated, B: Diffuse). Post-calving areas tend to change a lot more than calving. Both change in response to environmental conditions and vegetation (food) quality and quantity. More information needed on post-calving areas.
- Group 2– suggestion that post-calving area be extended to the east toward Rankin south of Diana River area and also north of Rankin
- Group 3 – Participants agreed with the identified post-calving areas.

- b. Do you agree it is necessary to restrict certain uses and activities like mining, oil & gas, roads, hydro-electric infrastructure, and quarries in Caribou Post-Calving areas?

➤ ***Most Rankin Inlet community participants agreed that activities like mining, oil & gas should be prohibited in caribou post-calving grounds. Some participants noted that roads, quarries, and hydro lines could be acceptable (with seasonal restrictions or mobile protection measures).***

- Group 1 – should consider allowing roads and quarries to allow the road to Manitoba to traverse the post-calving area south of Rankin Inlet. Perhaps should consider Special Management Area zoning with seasonal restrictions. For example, use quarries only in winter when caribou are not in the area. Mobile protection measures should be considered for post calving areas.
- Group 2– yes, but should allow one road and one hydro line - the additional areas perhaps should be zoned VEC or SMA as there is already development in these area but don't want extensive development to occur
- Group 3 – Participants agreed that activities should be restricted in post-calving areas. Noted that companies at Ferguson Lake should get out of that area.

- c. Are there other uses or activities that should be restricted?

- Group 1 – no comments
- Group 2 – no comments
- Group 3 – no comments

- d. If restrictions on uses or activities occur, should they be year-round or seasonal? If seasonal, what time frame would you recommend?

➤ ***Some Rankin Inlet community participants recommended that restrictions on caribou post-calving areas should be year-round, and some recommended that seasonal restrictions would be appropriate.***

- Group 1 – seasonal is ok.
- Group 2– seasonal in regards to roads – not built or operated in may june when caribou are using the area; support for 1 road and 1 hydroline; another proposal is to restrict road activity only when caribou are actually present based on some measurement of proximity (distance to be determined, people recognize that cows and calves are very sensitive to disturbance); it is difficult to determine when a road should be closed for caribou because exact timing of calving/post-calving varies each year with environmental conditions – would need to monitor caribou activity to decide each year; Concern expressed in regards to public safety on a potential road – how would this be attended to re: accidents on road etc etc maybe safety shelters every 15-20km.
- Group 3 – Year-round

6. Caribou Fresh Water Crossing

There are Caribou Fresh Water Crossings near your community (see map). The 2016 DNLUP recommends that the fresh water crossings be zoned Protected Areas with year-round restrictions on mining, oil & gas exploration, roads, hydro-electrical infrastructures, and quarries. *Note: There are parcels of Inuit Owned Land (surface and subsurface) within the areas and overlapping mineral rights.*

- a) Are the Caribou Fresh Water Crossing areas mapped correctly? Is the 10km buffer zone appropriate? If No ... then ... describe what changes should be made.

➤ ***Rankin Inlet community participants agreed with the identified caribou freshwater crossing locations and identified additional areas.***

- Group 1 – identified a location east of Chesterfield Inlet, and suggested taking away a location at the west end of Baker Lake because the terrain is very steep (note the location is within the crossing buffer, not on the exact location of the crossing). Some people felt the buffer size was appropriate, others that perhaps the buffer size should be reduced. Ship traffic in Chesterfield Inlet could have impacts on caribou when they are crossing the inlet. This is something that needs to be considered particularly in the area marked on the map. Cannot prohibit shipping along Chesterfield Inlet because Baker Lake and the mine must have supplies delivered each year. Perhaps Chesterfield Inlet caribou water crossing should be identified as Special Management Areas with appropriate conditions to ensure ships consider their potential impacts on caribou crossing the inlet.
- Group 2– caribou movements around Rankin and up toward Chesterfield – with lots of caribou crossing; movement toward the coast to get away from mosquitos; there are many other crossings – marked additional areas near Rankin – river along proposed road; Buffer size – no recommendations
- Group 3 – Participants agreed with the identified areas and also identified additional crossings.

- b) Do you agree it is necessary to restrict certain uses and activities like mining, oil & gas, roads, hydro-electric infrastructure, and quarries in Caribou Fresh Water Crossing areas?

➤ ***Rankin Inlet community participants agreed that activities like mining, oil & gas, all-weather roads, hydro-electric infrastructure, and quarries should be prohibited in caribou fresh water crossing areas.***

- Group 1 – agreed
- Group 2 – observations that meliadine road activities (trucks etc) affect caribou
- Group 3 – Participants agreed that it is necessary to restrict activities at caribou water crossings and noted that elders have always understood this.

- c) Are there other uses or activities that should be restricted?

➤ ***Rankin Inlet community participants noted concern with helicopters.***

- Group 1 – look at marine activities in Chesterfield Inlet and their potential effect on caribou when crossing the inlet
- Group 2– concern about helicopter use (flying height and places the land) around caribou;

- Group 3 – noted concern with helicopters because they chase caribou away.
- d) If restrictions on uses or activities occur, should they be year-round or seasonal? If seasonal, what time frame would you recommend?

➤ ***Some Rankin Inlet community participants recommended year round restrictions for caribou fresh water crossings.***

- Group 1 – no comments
- Group 2 – no comments
- Group 3 – Participants recommended year-round restrictions, but the concern regarding helicopters was from early September to mid-October.

7. Final wrap up Question

Are there other areas important to your community that the Nunavut land use plan should identify and designate for use? Identify the area, the values and sensitivity? Importance of area, and what types of activities should be restricted and when the restrictions should be in place.

➤ ***Rankin Inlet community participants.***

- Group 1 –None
- Group 2– yes –additional areas identified on Heritage Map during discussion regarding Corbett Inlet.
- Group 3 – Concerned about mineral exploration that goes ahead without community consultation. After they have done something they come talk to us. People need to be consulted before things are done.

Appendix A: Breakout Group Reference Maps

Appendix B: Breakout Group Map Revisions

Map 1: Additional Community Area of Interest Area – Diana River

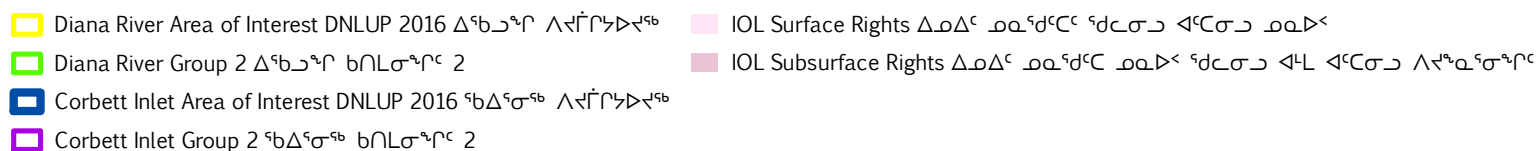
Map 2: Community Use Areas (Fishing, Hunting, Berry Picking)

Map 3: Additional Heritage Area (Kazan River) & Burial Grounds

Map 4: Additional Caribou Calving Habitat

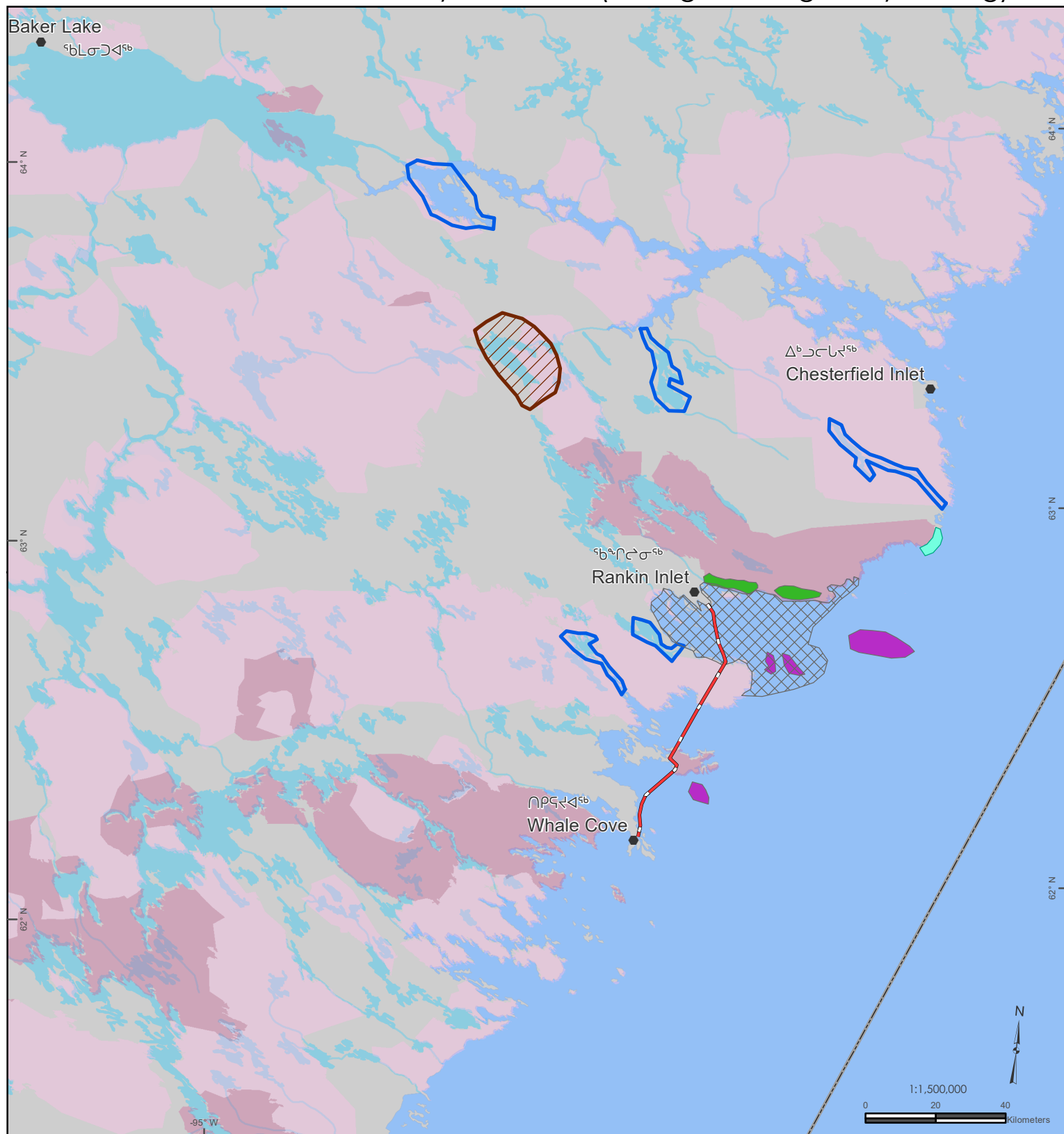
Map 5: Additional Caribou Post Calving Habitat

Map 6: Additional Caribou Fresh Water Crossing Areas







RANKIN INLET

ᓄᓗᑕᐅᔭᐅᔪᑦ ᐱᐅᑦᓴᑖᑦᑕᑦᑕᑦ (ᐱᑦᓴᑕᐱᑦᐱᑦ, ᐱᑦᓴᐃᐱᑦ, ᐱᑦᓴᑖᑕᑦᐱᑦ)
Community Use Areas (Fishing, Hunting, Berry Picking)



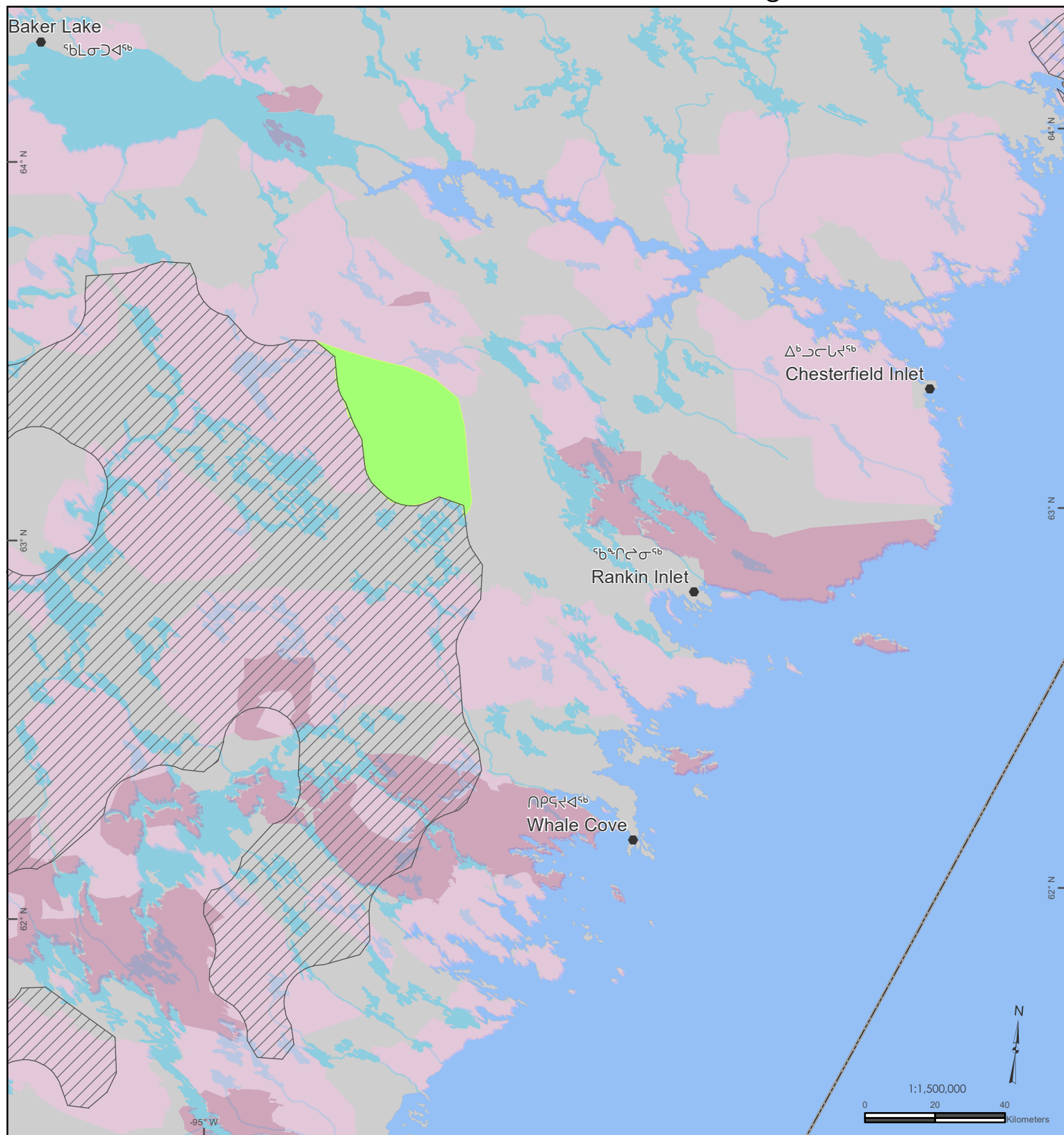
Group 2 $b \cap L\sigma^a r^c$ 2


- Eggs, Berries ᐱᓐᓂᑦ, <ᐅᐳᐭᐩᐸᓄᑦ
- Geese ᐃᖁᐩᐸᑦ
- Multispecies ᐅᐳᐭᐩᐸᓄᑦ
- Seal ᐸᑦᓯᓄᓐ
- Whales ᓯᓇᐸᐳᐭᐩᐸᑦ

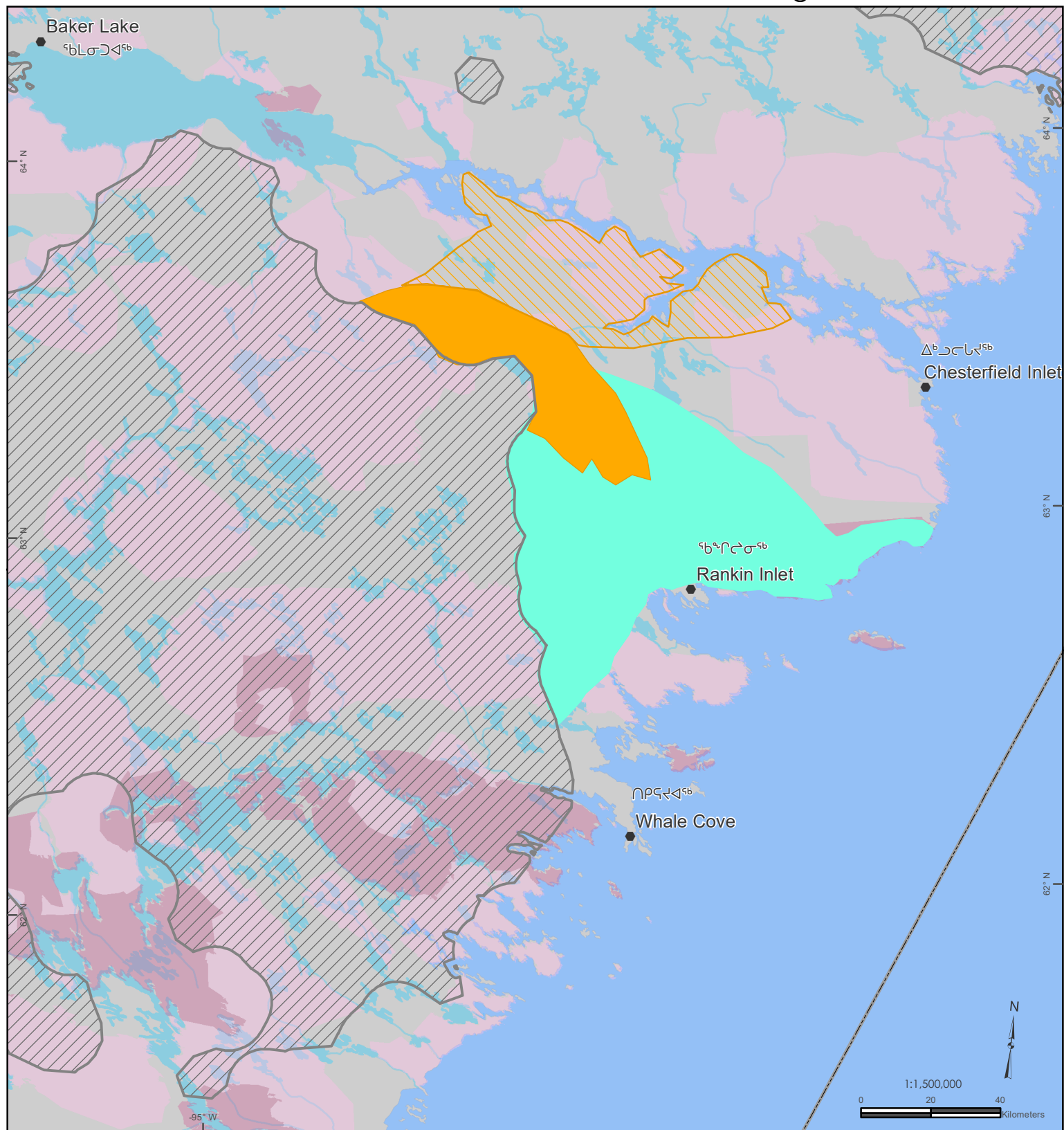
-  Sea Ice Travel Route Group 2 ርቢጥ ልዩናፅሮ ጋሮ ክብረሙሮ 2
-  Char Fishing River Group 2 ልጅጋላሮ ስሮጋሮናሙሮ ክብረሙሮ 2
-  IOL Surface Rights ልወልፍ ወዲኖሮና ፍሮሮና ልፍሮና ወዲኖ
-  IOL Subsurface Rights ልወልፍ ወዲኖሮና ወዲኖና ፍሮሮና ልብረ ልፍሮና ለፍፍራሙሮ





ፋንታልፌፍቱ ስልጣኔ ስለሚሰጥበት ሁኔታ ለግብርና ሚኒስቴር ማህተም ወይም ማረጋገጫ ማስገኘት (2016)፡ ፋንታልፌፍቱ ማህተም 6፡ ማረጋገጫ፡ ርዕስ
Conformal Conic, NAD 1983. ነዋሪው ስልጣኔ ማህተም ማረጋገጫ፡ 11 ሐምሌ 2020.

To be used for illustration purposes only and with the Options and Recommendations, Draft Nunavut Land Use Plan (2016). Sources: see Table 6. Projection: Lambert Conformal Conic, NAD 1983. Produced by the Nunavut Planning Commission, 11 February 2020.



-  Calving Core Area DNLUP 2016 ጋጋር ዘሊኦ
 IOL Surface Rights ልዑል ዓመትና ንብረት ስምንተኛ ዓመት



-  Post Calving Core Area DNLUP 2016 ንጋር ሙሉሽ ልወልወ
 Group 1 - A ከባሊሙሮ 1 - A
 Group 1 - B ከባሊሙሮ 1 - B
 Group 2 ከባሊሙሮ 2

