



ᄃᄆᄇ 22, 2020



## ልጋሮ

1. ሥርዓተ-ጥበቃ	3
1.1 ሥርዓተ-ጥበቃ ይገልጻልContext.....	3
1.2 ለጥበቃ	3
1.3 ልጋሮ	3
1.4 ልጋሮ ይገልጻል	4
1.5 ልጋሮ ይገልጻል	5
2. ልጋሮ ይገልጻል	6
1. ልጋሮ ይገልጻል	6
2. ልጋሮ ይገልጻል	7
3. ልጋሮ ይገልጻል	7
4. ልጋሮ ይገልጻል	8
5. ልጋሮ ይገልጻል	10
6. ልጋሮ ይገልጻል	12
7. ልጋሮ ይገልጻል	13
ልጋሮ ይገልጻል A: ልጋሮ ይገልጻል	15
ልጋሮ ይገልጻል B: ልጋሮ ይገልጻል	18
ልጋሮ ይገልጻል 1: ልጋሮ ይገልጻል	
ልጋሮ ይገልጻል 2: ልጋሮ ይገልጻል	
ልጋሮ ይገልጻል 3: ልጋሮ ይገልጻል	
ልጋሮ ይገልጻል 4: ልጋሮ ይገልጻል	
ልጋሮ ይገልጻል 5: ልጋሮ ይገልጻል	
ልጋሮ ይገልጻል 6: ልጋሮ ይገልጻል	

[illegible]



### 1.5 $Cd \cap \Delta b \sigma^a \sigma^b$

[illegible]





➤ **ᐃᑕᖅᓴᓐ ᑲᑎᒪᖅᑕᐅᔪᓐ ᐃᑲᔪᖅᑕᐃᑕᐅᖅᑕᓐᑦ ᑕᐃᑕᐃᖅᓴᓐᑕᑎᑲ ᓄᑕᓐᓂᑲ ᐊᓕᓕᓕᓴᓐᑕᑎᑲᓐ ᑕᐃᑕᐃᖅᓴᓐᒪᑎᐊᑕᓐᑕᓐᑦ ᐊᓕᓕᓕᓴᓐᓴᓐᑦ ᓄᓐᑕᓐᑦ**

- ᐊᑲᑲᑕᖅᓴᓐᑕᓐ 1 – ᒪᖅᑕᐃᑎᓐ ᑲᑎᒪᓴᓐ ᐱᑕᓕᓐᑲᑎᖅᑕᐅᖅᑕᓐᑦ ᐃᒪᖅᑕᐅᑕᑕᓕᓐᓴᓐᓂᑲ ᖅᑕᐅᓴᓐᑕᑎᑲ ᖅᑕᐃᖅᓂᖅᑕᓐ ᓄᑕᓐᑦ ᐊᑕᑕᑲᓂᖅᑕᐃᑕᓐᑕᓐᑦᓴᓐᓂᑲ. ᒪᖅᑕᐃᑎᓐ ᑲᑎᒪᓴᓐ ᑕᑎᓴᓐᑕᐅᓐᓂᑲ ᑕᓂᓴᑕᐅᖅᒪᑕ ᐃᑕᐊᓐᓂ 2020 ᑎᑎᑕᖅᓴᓐᓴᓐᑕᓐᓂᑲ.
- ᐊᑲᑲᑕᖅᓴᓐᑕᓐ 2 – ᑕᑎᑕᓂᑎᑕᐅᓐᑕᓐᑕᓐ ᓄᑕ ᐃᑕᐊᓐᓂ AIO (ᐃᑕᐅᑕᓐᓂ ᐊᒪᑕᓐᓴᓐᓴᓐᑕᓐᑦ ᑎᑎᑕᖅᓴᓐᑕᓐᑦᓴᓐ ᐊᑕᓐᑎᖅᑕᓐᑕᓐ ᓄᑕᓐᑕᓐᑕᓐᑕᓐᑕᓐᑦ); ᐊᑕᓐᑕᓐᑕᓐᑕᓐᑕᓐ ᖅᑕᐃᓐᓂᐅᓐ ᓄᑕᓐᑕᓐᑕᓐ ᐊᓕᓕᓕᓴᓐᑕᐅᑕᓐᓂᑲ - ᐃᑕᖅᑕᓐᑕᓐᓂ ᐃᖅᑕᓐᑕᓐ ᓴᑕᓐᑕᓐ ᐊᑕᓐᑕᓐᑕᓐᑕᓐ ᓄᑕᓐ, ᑕᐃᓐᓴᓐᑕᓐ ᐊᑕᓐᑕᓐᑕᓐᑕᓐᑕᓐ, ᐃᑕᓐᑕᓐᑕᓐᑕᓐᑕᓐᑕᓐ, ᑕᓐᑕᓐ ᐱᓐᑕᓐᑕᓐ ᐊᑕᓐᑕᓐ; ᐃᑕᓐᑕᓐᑕᓐᑕᓐ ᓄᑕᓐᑕᓐᑕᓐᑕᓐ ᐃᓐᑕᓐᑕᓐᑕᓐ (ᑕᓐᑕᓐᑕᓐᑕᓐ); ᐃᑕᓐᑕᓐᑕᓐ ᐊᑕᓐᑕᓐᑕᓐᑕᓐ ᓂᓴᐊᓐᓂ ᐃᓐᑕᓐᑕᓐᑕᓐ; ᐅᖅᓴᓐᑕᓐ ᐃᑕᓐᑕᓐᑕᓐᑕᓐᑕᓐ ᐊᓐᓴᓐᑕᓐ ᓴᑎᓴᓐᑕᓐ ᑎᖅᑕᓐᑕᓐᑕᓐᑕᓐᑕᓐ; ᐊᓐᓴᓐᑕᓐ ᓴᑎᓴᓐᑕᓐ ᑕᓐᑕᓐ ᓴᑕᓐᑕᓐᑕᓐᑕᓐᑕᓐ, ᐅᓴᓐᑕᓐᑕᓐᑕᓐᑕᓐ, ᖅᑕᓐᑕᓐᑕᓐᑕᓐᑕᓐᑕᓐ; ᐃᖅᑕᓐᑕᓐᑕᓐᑕᓐ ᓂᓴᐊᓐᓂ ᐃᓐᑕᓐᑕᓐᑕᓐ – ᓴᓴᓐ ᑕᓴᓐ; ᐅᓴᓐ ᑕᓐᑕᓐ – ᐃᖅᑕᓐᑕᓐᑕᓐᑕᓐ ᑕᓐᑕᓐᑕᓐᑕᓐ = ᐃᓐᑕᓐᑕᓐᑕᓐ ᓐᓂᐊᓂ ᖅᑕᓐᑕᓐᑕᓐᑕᓐᑕᓐ ᖅᑕᓐᓂᓐᑕᓐᑕᓐᑕᓐᑕᓐ; ᐃᖅᑕᓐᑕᓐᑕᓐᑕᓐ ᐊᒪ ᑕᓐᑕᓐᑕᓐᑕᓐ; ᓴᓴᓐᑕᓐ ᐊᑕᓐᑕᓐᑕᓐᑕᓐ ᑕᓐᑕᓐᑕᓐ ᑎᑎᑕᖅᑕᓐᑕᓐᑕᓐ ᑲᓐᓴᓐᑕᓐᑕᓐᑕᓐᑕᓐ (ᐅᑎᑕᓐᑕᓐ ᐊᒪ ᐊᑕᓐᑕᓐ ᑎᑎᑕᖅᑕᓐᑕᓐᑕᓐ, ᐃᓐᑕᓐᑕᓐᑕᓐᑕᓐ ᐊᒪ ᑲᓐᓴᓐᑕᓐᑕᓐᑕᓐ ᖅᑕᓐᑕᓐᑕᓐᑕᓐᑕᓐ ᐊᑕᓐᑕᓐ ᐅᑎᑕᓐᑕᓐ); ᑕᐃᑕᐃᑕᓐᑕᓐᑕᓐᑕᓐ ᓴᓐᑕᓐᑕᓐᑕᓐᑕᓐᑕᓐ ᓴᓐᑕᓐᑕᓐᑕᓐᑕᓐ – ᓴᓴᓐᑕᓐ ᐃᓂᓴᓐᑕᓐᑕᓐᑕᓐ ᐊᓐᑕᓐᑕᓐᑕᓐᑕᓐ;
- ᐊᑲᓐᑕᓐᑕᓐ 3 – ᑲᑎᒪᖅᑕᐅᔪᓐ ᐊᓐᓴᓐᑕᓐᑕᓐ ᓴᓐᑕᓐᑕᓐᑕᓐᑕᓐᑕᓐ ᖅᑕᓐᑕᓐᑕᓐᑕᓐ.

b) ᐊᓐᓴᓐᑕᓐᑕᓐ ᑕᐃᑕᐃᖅᑕᐅᓐᑕᓐᑕᓐ ᐅᓐᑕᓐᑕᓐᑕᓐᑕᓐ ᐊᑕᓐᑕᓐᑕᓐᑕᓐ ᐃᓄᓐᑕᓐ ᐱᒪᒪᓐᑕᓐᑕᓐᑕᓐ ᐅᒪ ᓄᑕᐅᓐ ᖅᑕᓐᑕᓐᑕᓐ? ᐊᓐᓴᓐᑕᓐᑕᓐᑕᓐ ᓴᑕ ᐱᑕᓂᖅᑕᓐᑕᓐ?

➤ **ᑲᓐᓴᓐᑕᓐᑕᓐ ᐃᓴᓐᑕᓐᑕᓐ ᓄᑕᐃᓐ ᐃᑕᖅᓴᓐ ᐱᑕᓐᑕᓐᑕᓐᑕᓐᑕᓐ.**

- ᐊᑲᑲᑕᖅᓴᓐᑕᓐ 1 – ᖅᑕᓐᑕᓐᑕᓐ ᓄᑕᓐᑕᓐᑕᓐ ᐊᑕᓐᑕᓐᑕᓐᑕᓐᑕᓐ ᓴᓐᑕᓐᑕᓐᑕᓐᑕᓐᑕᓐ ᓄᑕᓐᑕᓐᑕᓐ ᐊᑕᓐᑕᓐᑕᓐᑕᓐᑕᓐ. ᐊᓐᓴᓐᑕᓐᑕᓐ ᓄᑕᓐᑕᓐᑕᓐ ᑕᐃᑕᐃᖅᑕᓐᑕᓐᑕᓐᑕᓐ.
- ᐊᑲᑲᑕᖅᓴᓐᑕᓐ 2 – ᐃᓴᓐᑕᓐᑕᓐᑕᓐ ᓴᓐᑕᓐᑕᓐᑕᓐᑕᓐᑕᓐ ᐊᑕᓐᑕᓐᑕᓐᑕᓐᑕᓐ ᐃᓄᐃᓐ ᓄᑕᓐᑕᓐᑕᓐᑕᓐ ᓴᑕᓐᑕᓐᑕᓐᑕᓐᑕᓐ. ᐅᑎᑕᓐ ᐃᑕᐊᓐᓂ ᓐᑕᓐᑕᓐᑕᓐᑕᓐᑕᓐ ᓄᑕᓐ.
- ᐊᑲᑲᑕᖅᓴᓐᑕᓐ 3 – ᑲᑎᒪᐊᑕᐅᔪᓐ ᑕᐅᓴᓐᑕᓐᑕᓐ ᑕᓐᑕᓐ ᓴᓐᑕᓐ ᓴᑕᓐᑕᓐᑕᓐᑕᓐᑕᓐ ᐅᓐᑕᓐᑕᓐᑕᓐ. ᐃᓴᓐᑕᓐᑕᓐᑕᓐ ᐱᑕᓐᑕᓐ ᖅᑕᓐᑕᓐᑕᓐᑕᓐᑕᓐ. ᑲᑎᒪᖅᑕᐅᔪᓐ ᐊᓴᓐᑕᓐ ᓴᑕᓐᑕᓐᑕᓐᑕᓐᑕᓐ ᓴᓐᑕᓐᑕᓐᑕᓐᑕᓐ ᐅᓐᑕᓐᑕᓐᑕᓐ ᐅᓐᑕᓐᑕᓐᑕᓐ ᓄᖅᑕᓐᑕᓐᑕᓐᑕᓐᑕᓐ.

#### 4. Caribou Calving Areas





- d.  $\Delta I^{\text{C}} \delta V_{\text{bc}}^{\text{C}} \sigma_{\text{bc}}^{\text{C}} < C$   $\nabla G_{\text{JCB}}^{\text{C}} \triangleright \varrho_{\text{J}}^{\text{C}} \triangleright P \triangleleft \Delta c_{\text{L}}^{\text{C}} \sigma_{\text{q}}^{\text{C}}?$   $\triangleright P \triangleright \Delta c_{\text{L}}^{\text{C}} \sigma_{\text{q}}^{\text{C}}$   
 $\varpi_{\text{b}}^{\text{C}} L_{\text{C}}^{\text{C}} \sigma_{\text{V}}^{\text{C}} < C,$   $I_{\text{q}} \triangleright c_{\text{L}}^{\text{C}} \varpi_{\text{b}}^{\text{C}} L_{\text{C}}^{\text{C}} \nabla V_{\text{bc}}^{\text{C}} < C?$

- $\triangleleft \delta^b \triangleright^c \rho^c \rho^c 1 - \triangleright \rho \triangleright^c \triangleleft \triangleright \sigma \triangleright^b \triangleright^c$
- $\triangleleft \delta^b \triangleright^c \rho^c \rho^c 2 - \triangleright \rho \triangleright^c \triangleleft \triangleright \sigma \triangleright^b \triangleright^c$
- $\triangleleft \delta^b \triangleright^c \rho^c \rho^c 3 - \triangleright \rho \triangleright^c \triangleleft \triangleright \sigma \triangleright^b \triangleright^c$

[illegible][illegible]

- [illegible]

ዲረገብ ለፍትህ ሚኒስቴር ለሰጠው 2016 ሪፖርት መሰረት የጋራ ጥቅም ሆኖ የሚያገለግል ሲሆን፣  
- ከፍተኛው፣ ከጥቅም 22፣ 2019 10



- $\Delta \delta^b \supset \epsilon^b \rho^c \supset \Delta \supset \Delta \sigma \supset \epsilon^b \supset \epsilon^b$

ዲረብላጅነት ሙሉም ክብርና 2016 ዓ.ም. ሙያ ሙከራ ልማትና የሰው  
- ክስተት, ነሐሴ 22, 2019 12

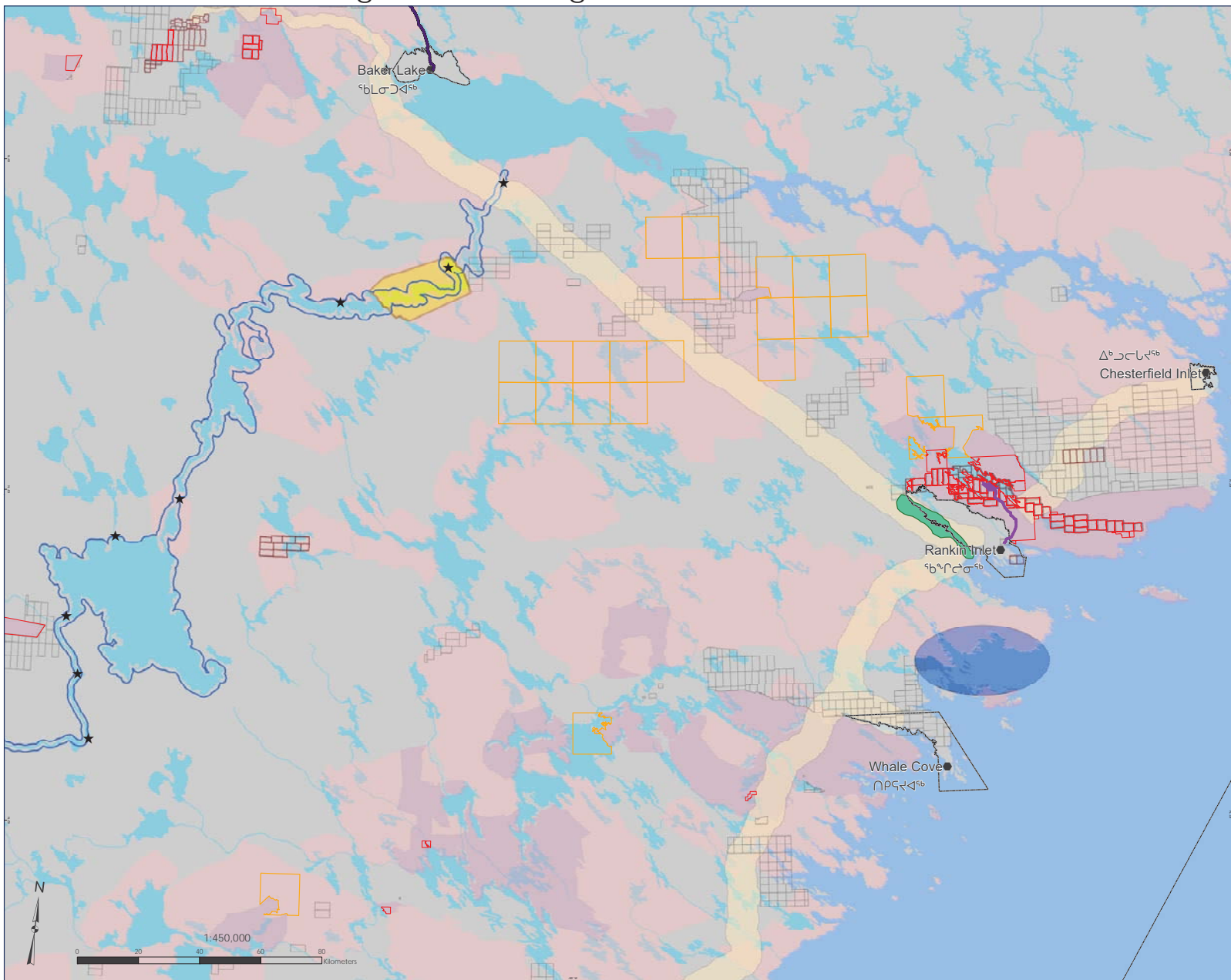




ልረብረብኝ ለ፡ ልልካረጋብ ከባረኝ ክልላብረብኝ ልረብረብኝ

## RANKIN INLET

ᐃᑦᑕᑦᑲᐃᑦ, ᐃᑦᑕᑦᑲᐃᑦ, ᐱᑦᑦᑦᑦᑦᑦᑦᑦ  
Heritage River, Heritage Areas, & Area of Interest



- [illegible]

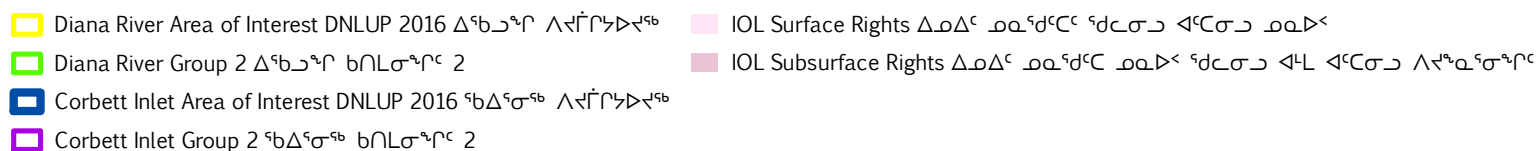
To be used for illustration purposes only and with the Options and Recommendations, Draft Nunavut Land Use Plan (2016). Sources: see Table 6. Projection: Lambert Conformal Conic, NAD 1983. Produced by the Nunavut Planning Commission, 07 January 2020.





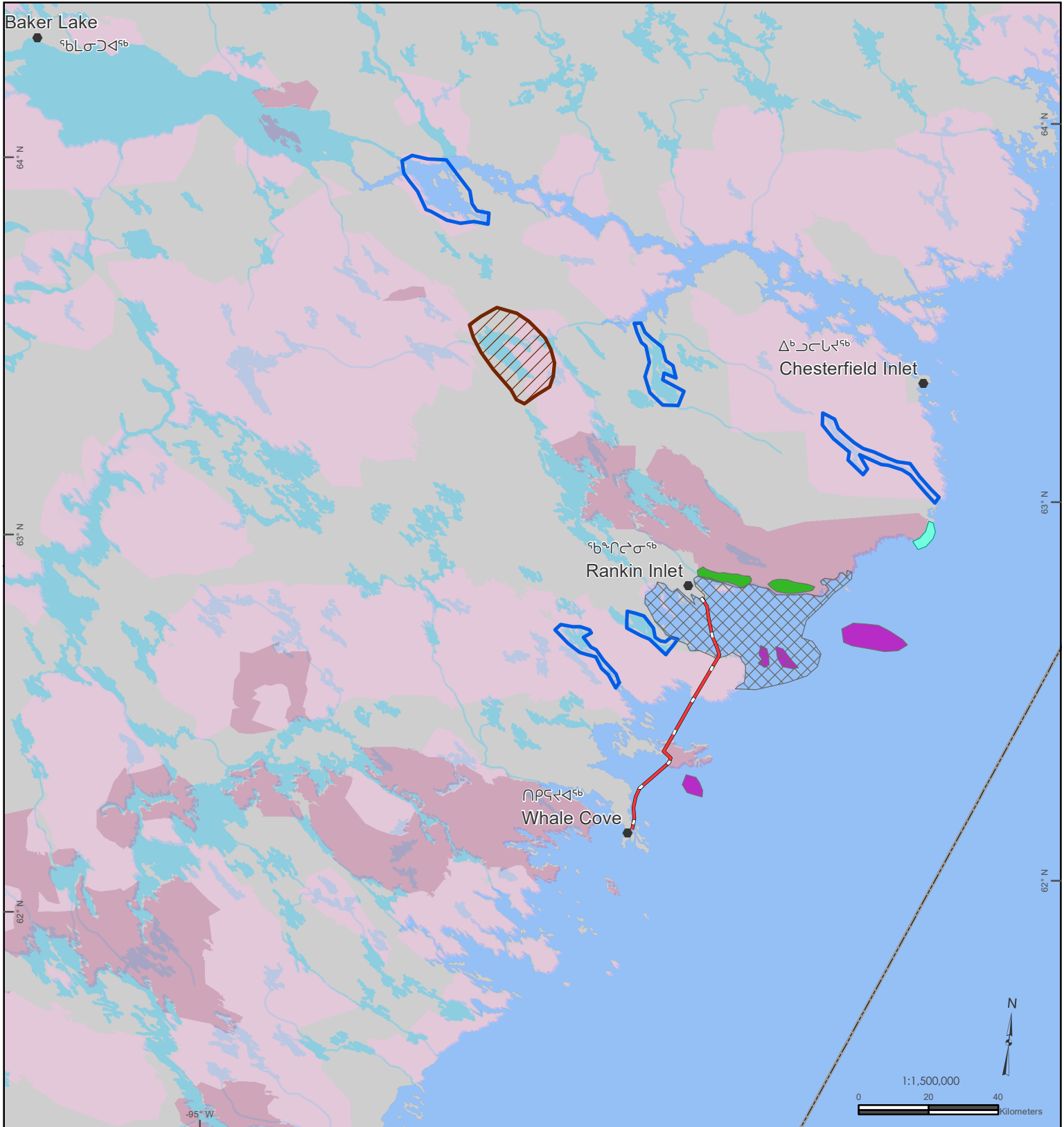
## ᐃᑕᑦᑎᐱᑦᑎᐱᑦ B: ᐃᐱᑦᑎᐱᑦᑎᐱᑦ ᑲᑎᐱᑦᑎᐱᑦ ᓄᓇᑭᐱᑦᑎᐱᑦᑎᐱᑦ

- ᓄᓇᑭᐱᑦᑎᐱᑦ 1: ᐃᑕᐱᑦᑎᐱᑦᑎᐱᑦᑎᐱᑦ ᓄᓇᑕᐱᑦᑎᐱᑦ ᐱᑕᐱᑦᑎᐱᑦᑎᐱᑦ - ᐃᑦᑲᐱᑦᑎᐱᑦ
- ᓄᓇᑭᐱᑦᑎᐱᑦ 2: ᓄᓇᑕᐱᑦᑎᐱᑦ ᐱᑕᐱᑦᑎᐱᑦᑎᐱᑦ (ᐃᑦᑲᑕᐱᑦᑎᐱᑦ, ᐱᑦᑲᐱᑦᑎᐱᑦ, ᐱᑕᑦᑎᐱᑦᑎᐱᑦᑎᐱᑦ)
- ᓄᓇᑭᐱᑦᑎᐱᑦ 3: ᐃᑕᐱᑦᑎᐱᑦᑎᐱᑦᑎᐱᑦ ᓄᓇᐱᑦᑎᐱᑦᑎᐱᑦ (ᑲᑦᑦ ᐱᑦᑎᐱᑦ) ᐃᐱᑦᑎᐱᑦᑎᐱᑦ
- ᓄᓇᑭᐱᑦᑎᐱᑦ 4: ᐃᑕᐱᑦᑎᐱᑦᑎᐱᑦᑎᐱᑦ ᑕᑦᑎᐱᑦ ᓄᓇᑕᐱᑦᑎᐱᑦᑎᐱᑦ ᓄᓇᑕᐱᑦᑎᐱᑦ
- ᓄᓇᑭᐱᑦᑎᐱᑦ 5: ᐃᑕᐱᑦᑎᐱᑦᑎᐱᑦᑎᐱᑦ ᑕᑦᑎᐱᑦ ᓄᓇᑕᐱᑦᑎᐱᑦᑎᐱᑦ ᓄᓇᑕᐱᑦᑎᐱᑦ
- ᓄᓇᑭᐱᑦᑎᐱᑦ 6: ᐃᑕᐱᑦᑎᐱᑦᑎᐱᑦᑎᐱᑦ ᑕᑦᑎᐱᑦ ᐱᑦᑎᐱᑦ ᓄᓇᑕᐱᑦᑎᐱᑦ



## RANKIN INLET

Community Use Areas (Fishing, Hunting, Berry Picking)



Group 2   bɒlσ<sup>ə</sup>rɔ 2

- Eggs, Berries  $L^a\sigma^c$ ,  $\langle D^iLC^s\delta^c$
- Geese  $\Pi^f\Delta^c$
- Multispecies  $\triangleright L^r s^b \delta^c$
- Seal  $a^c \rho^b$
- Whales  $\rho a \Delta L^c$

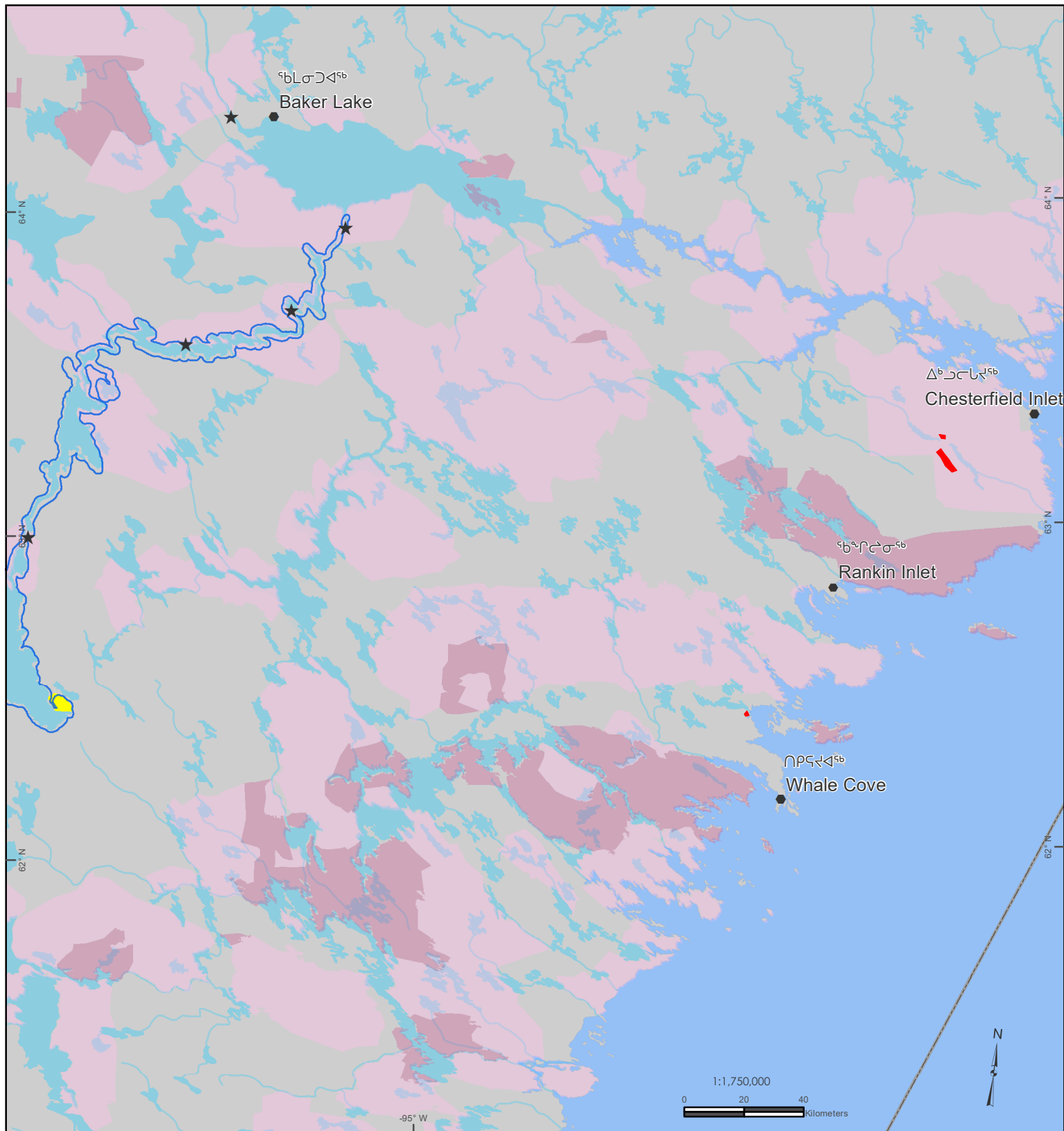
- Sea Ice Travel Route Group 2 ᑕᓕᓄᑦ ᐃᓄᑦᓂᑦ ᐃᑦ ᑲᑎᓚᓂᓄᑦ 2
- Char Fishing River Group 2 ᐃᓄᑲᐃᑦ ᐃᑦᑎᑦᑕᓄᓂᓄᑦ ᑲᑎᓚᓂᓄᑦ 2
- IOL Surface Rights ᐃᓄᐃᑦ ᐃᓄᓄᑦᑕᑦ ᓄᑦᑕᓂᐃᑦ ᐃᓄᑲᑦ
- IOL Subsurface Rights ᐃᓄᐃᑦ ᐃᓄᓄᑦᑕᑦ ᐃᓄᑲᑦ ᓄᑦᑕᓂᐃᑦ ᐃᓄᓄᑦᑕᓄᓂᓄᑦ

[illegible]

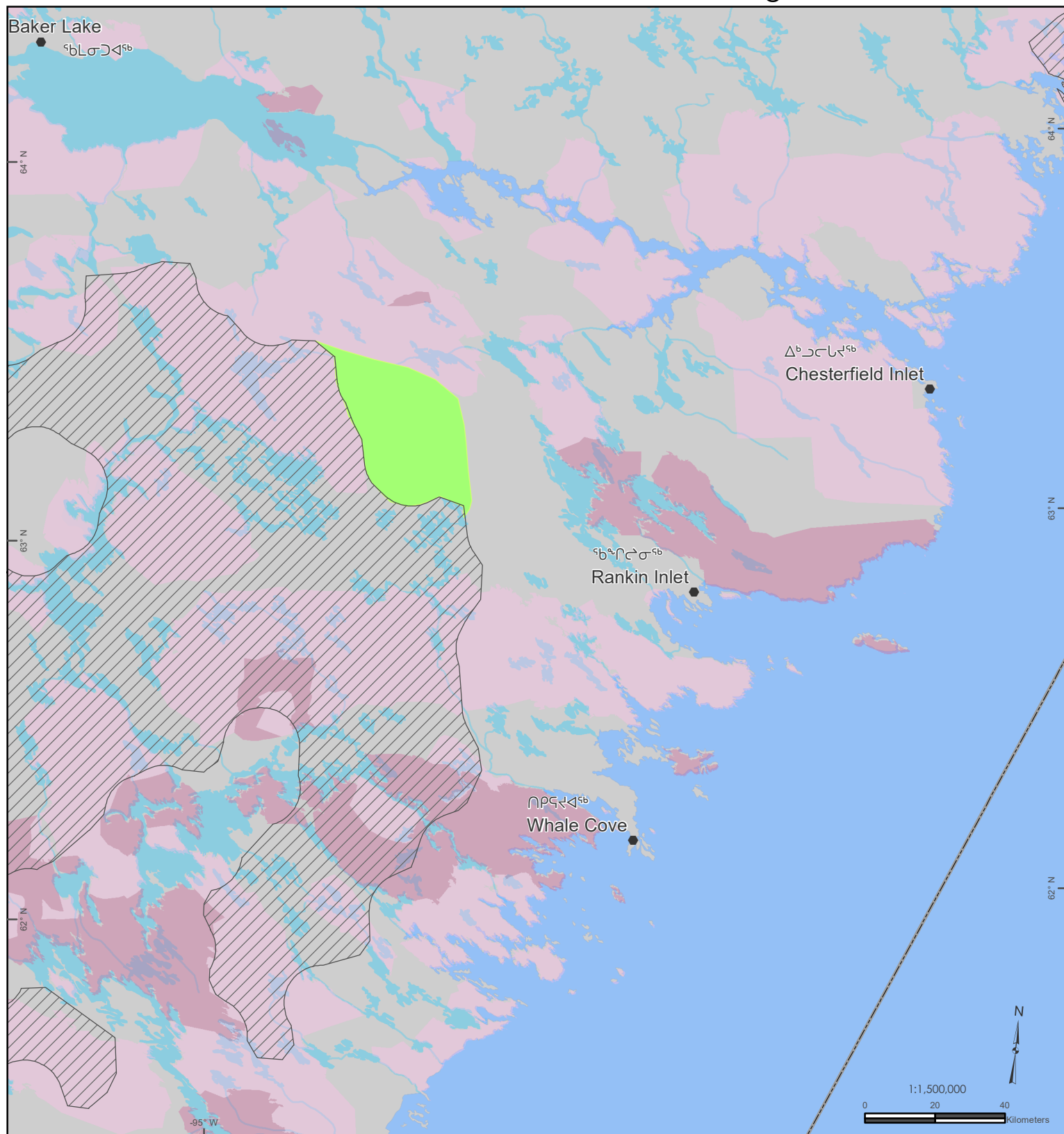
To be used for illustration purposes only and with the Options and Recommendations, Draft Nunavut Land Use Plan (2016). Sources: see Table 6. Projection: Lambert Conformal Conic, NAD 1983. Produced by the Nunavut Planning Commission, 11 February 2020.




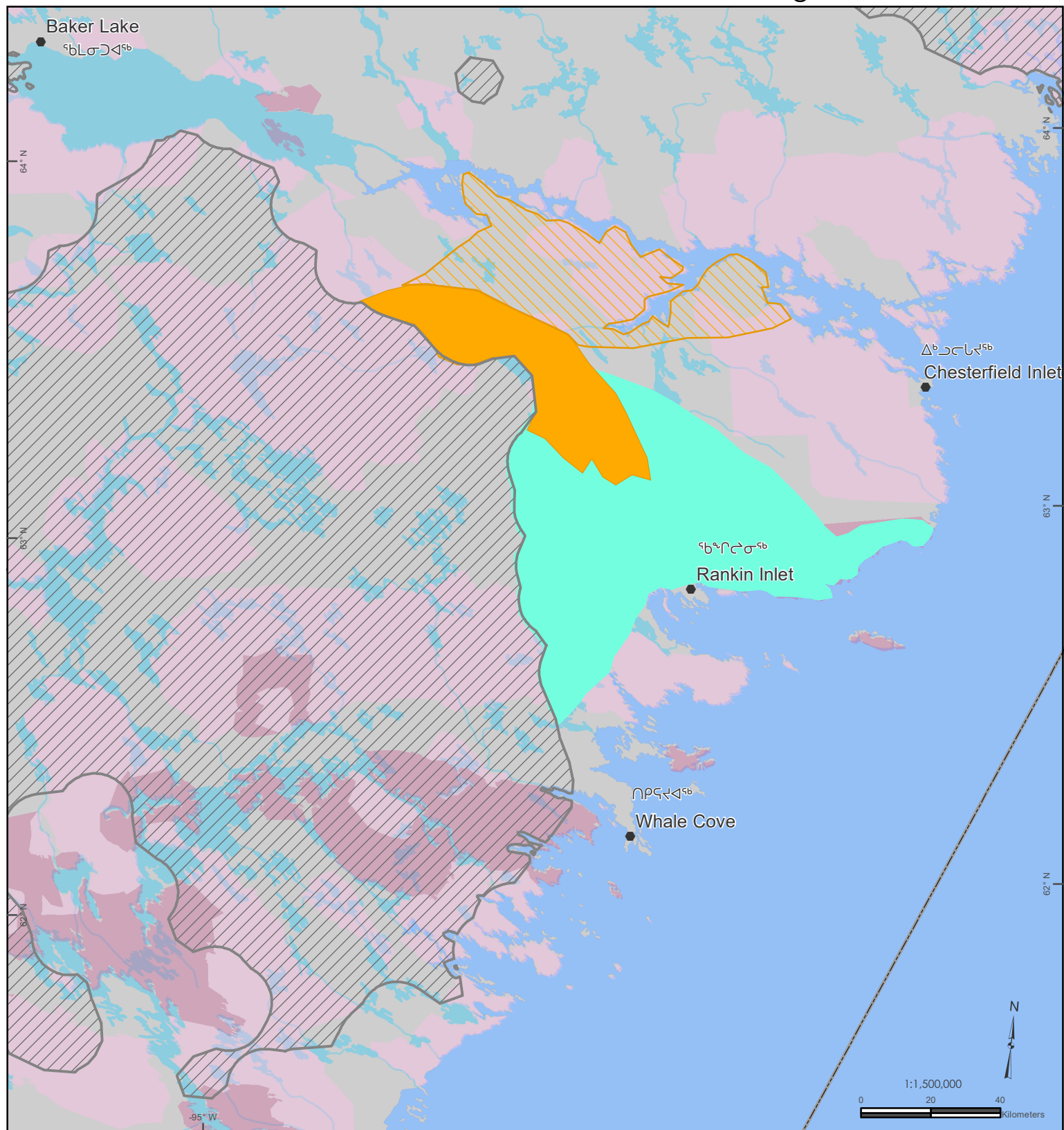
Δεῦτε ἄλλοις ἡμεῖς ἡμεῖς (ἡμεῖς ἡμεῖς) ἡμεῖς ἡμεῖς  
Additional Heritage Area (Kazan River) & Burial Grounds







- CHRS Kazan River DNLUP 2016 በፋርግ ደረጃ ላይ የሚገኝ ሲሆን
  IOL Surface Rights ልማት ላይ የሚገኝ ሲሆን
- Heritage Area DNLUP 2016 ልማት ላይ የሚገኝ ሲሆን
  IOL Subsurface Rights ልማት ላይ የሚገኝ ሲሆን
- Heritage Area Group 2 ልማት ላይ የሚገኝ ሲሆን
  Burial Ground Group 2 ልማት ላይ የሚገኝ ሲሆን



-  Calving Core Area DNLUP 2016 ጋጋር ዘሊኦ  
 Caribou Calving Group 1 ጋጋር ዘሊኦ ከቢሎዲክ 1



-  Post Calving Core Area DNLUP 2016 ጋጋሮ ሠብረሮ ልዩልሮ  
 Group 1 - A ከባሊሙሮ 1 - A  
 Group 1 - B ከባሊሙሮ 1 - B  
 Group 2 ከባሊሙሮ 2

