

Muskox Nickel Property Non-Technical Summary

The Muskox Nickel Property (the “Property” or the “Project”), owned and operated by SPC Nickel Corp. (“SPC” or the “Company”), consists of 12 mineral claims covering 14,893 hectares and 2 prospecting permits covering 30,350 hectares. The Property is separated into a North Block, located on National Topographic System (“NTS”) map sheets: 86O03 and 86J14 and centered at 574,500mE, 7,427,000mN, North American Datum 1983 (“NAD83” Universal Transverse Mercator (“UTM”) Zone 11, and a South Block, located on NTS map sheets: 86J02, 86J06, 86J07, 86J10 and 86J11 (centered at 591,600mE, 7,373,000mN, NAD83 Zone 11). The North Block is located approximately 100 km south of the Hamlet of Kugluktuk and partially overlaps Inuit Owned Land (“IOL”) surface parcels CO-52 and CO-60. The south block, located entirely on Crown land, is approximately 20 km south of the North Block and extends to the Nunavut - Northwest Territories border.

SPC is currently planning a one week field project anticipated to commence in June and will include reconnaissance visits to both the North and South Blocks. The field program will be based out of the Hamlet of Kugluktuk with helicopter transportation providing daily access to and from the Project. The program will be completed by SPC employees (currently estimated to be three) and will consist primarily of prospecting and the collection of surface rock samples for analysis, visual geological information on known historic mineral occurrences, marketing material including photos and videos, as well as the scouting of potential future camp locations.

The proposed work will be helicopter supported and require the occasional landing of the aircraft. All refueling will be conducted in Kugluktuk. No other use of mechanical equipment is proposed. In order to mitigate any potential impact on wildlife, the helicopter will always maintain a minimum altitude of 610 m (2,100 ft) above ground level except during landing, take-off or if there is a specific requirement for low level flying (e.g. airborne surveys). Wildlife will be avoided and the helicopter will not land in the presence of wildlife except in an emergency.

Absolutely no activities will be conducted that will interfere with caribou cows and calves, and no exploration activities will cause a diversion in the migration patterns of any caribou. SPC will communicate with the Kitikmeot Inuit Association (“KIA”) and any other interested parties, regarding caribou sightings and appraised movements in the area.

The 2022 program will not require any fuel to be cached on the Project, but future programs may require small temporary fuel caches (< 4,000 L or 9 drums) to facilitate the exploration program. If required, the fuel caches will be located on Crown land, stored within appropriate secondary containment and Crown-Indigenous Relations and Northern Affairs Canada (“CIRNAC”) will be notified prior to establishment. Any fuel cache established will have appropriate spill kits. The helicopter will provide a spill kit for any staging areas for take-off and landing. Any waste will be collected and disposed of in the Hamlet of Kugluktuk.

Exploration programs may include additional non-destructive exploration activities such as ground and airborne geophysical surveys and geochemical soil/till sampling. Prior to subsequent years program commencement all the regulatory authorities will be notified and supplied with an updated work plan and schedule. If additional work is proposed that would require amendments

or new approvals, such as a camp or drilling, SPC will immediately initiate the amendments and/or new applications for land use permits and/or water licences as appropriate for the type of work contemplated.

Consultation with the Hamlet, Hunters and Trappers Organization and public of Kugluktuk is current being planned to be completed prior to the field program.

If you have any questions or concerns, please contact Grant Mourre with SPC Nickel Corp. at (705) 669-1777 ext. 207 or gmourre@spcnickel.com or Tara Gunson of APEX Geoscience Ltd. at (780) 467-3532 or tgunson@apexgeoscience.com.

Respectfully,



Grant Mourre
SPC Nickel Corp.

Figure 1: Project Location

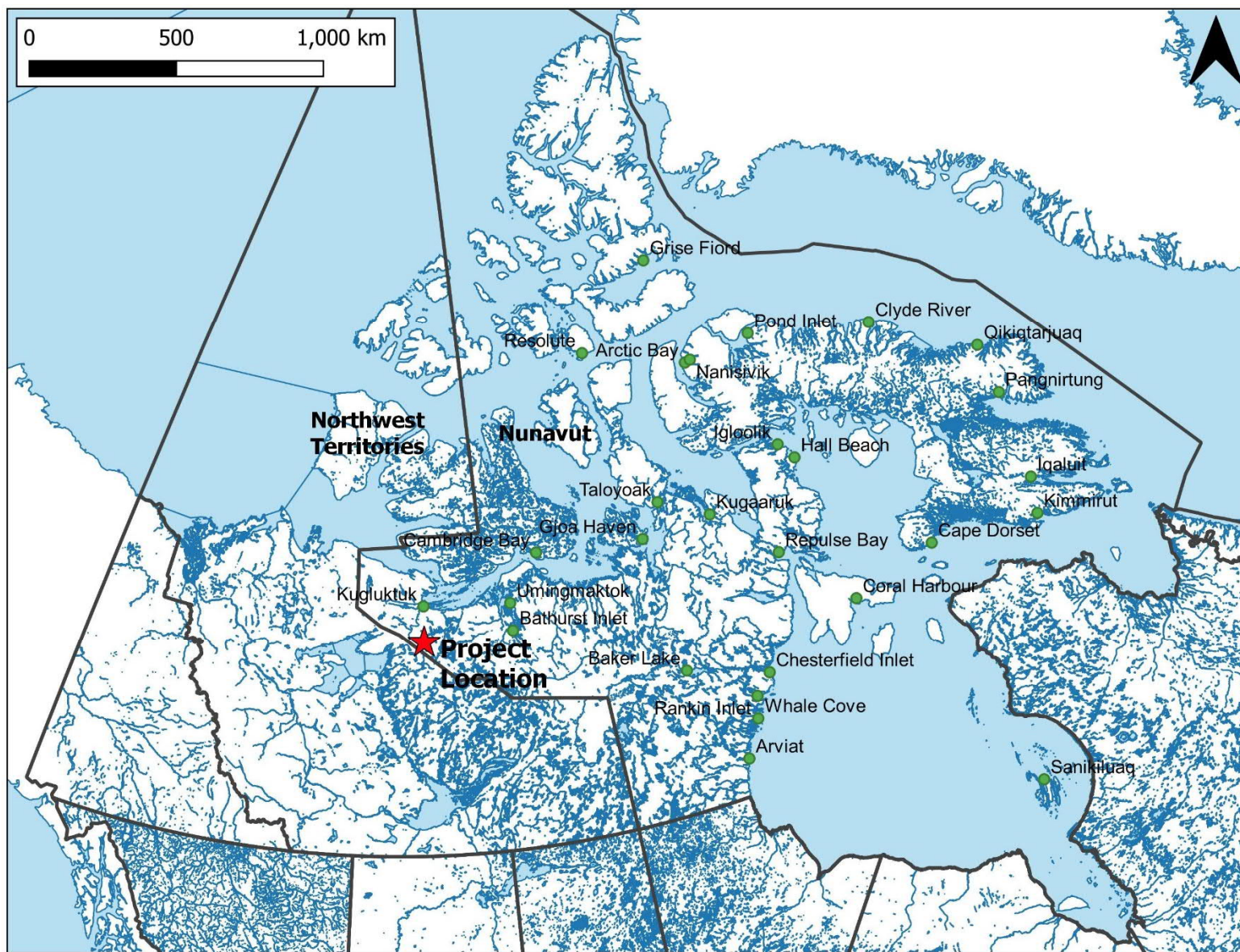


Figure 2: Project Area

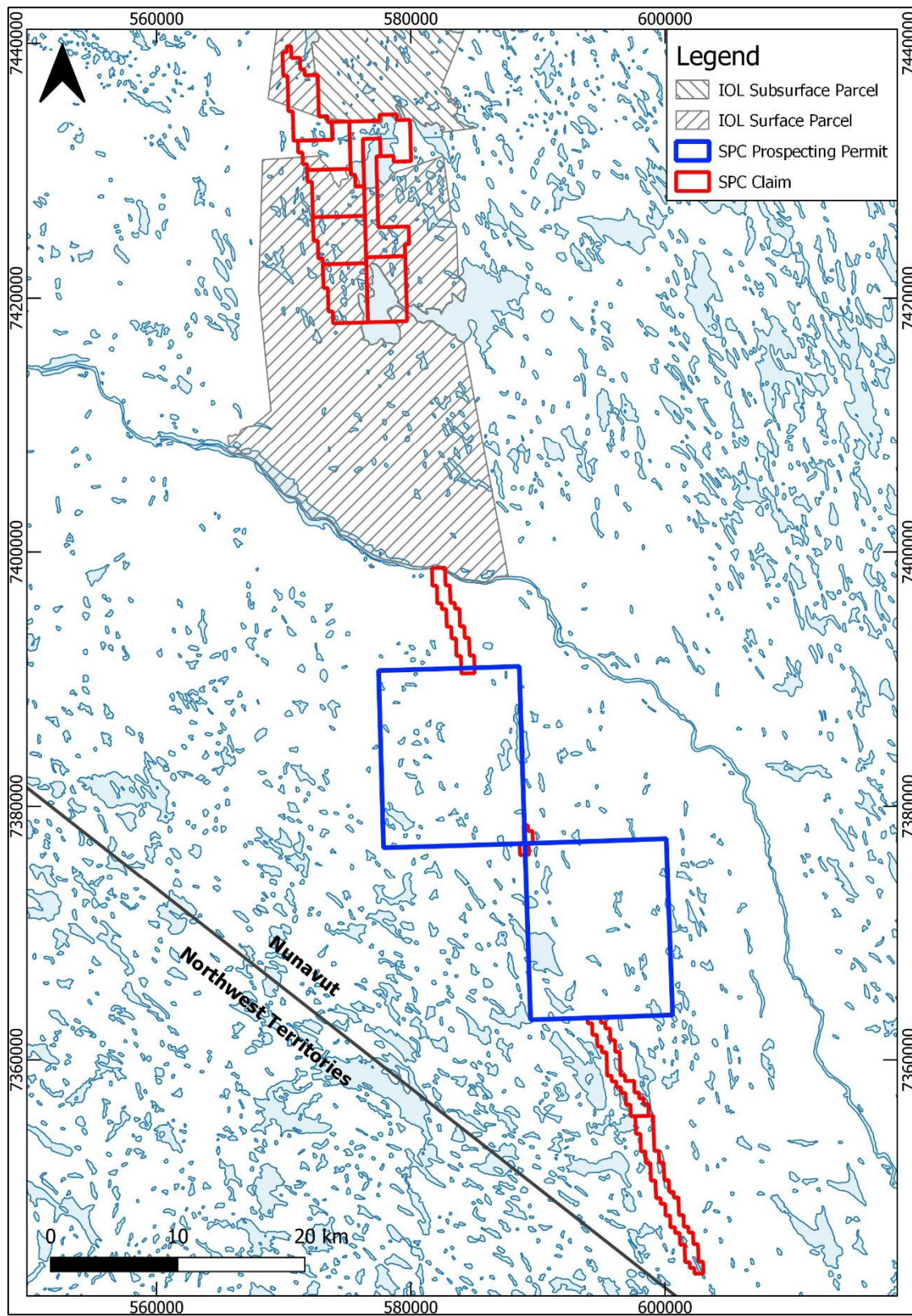


Figure 3: Proposed Exploration Targets

