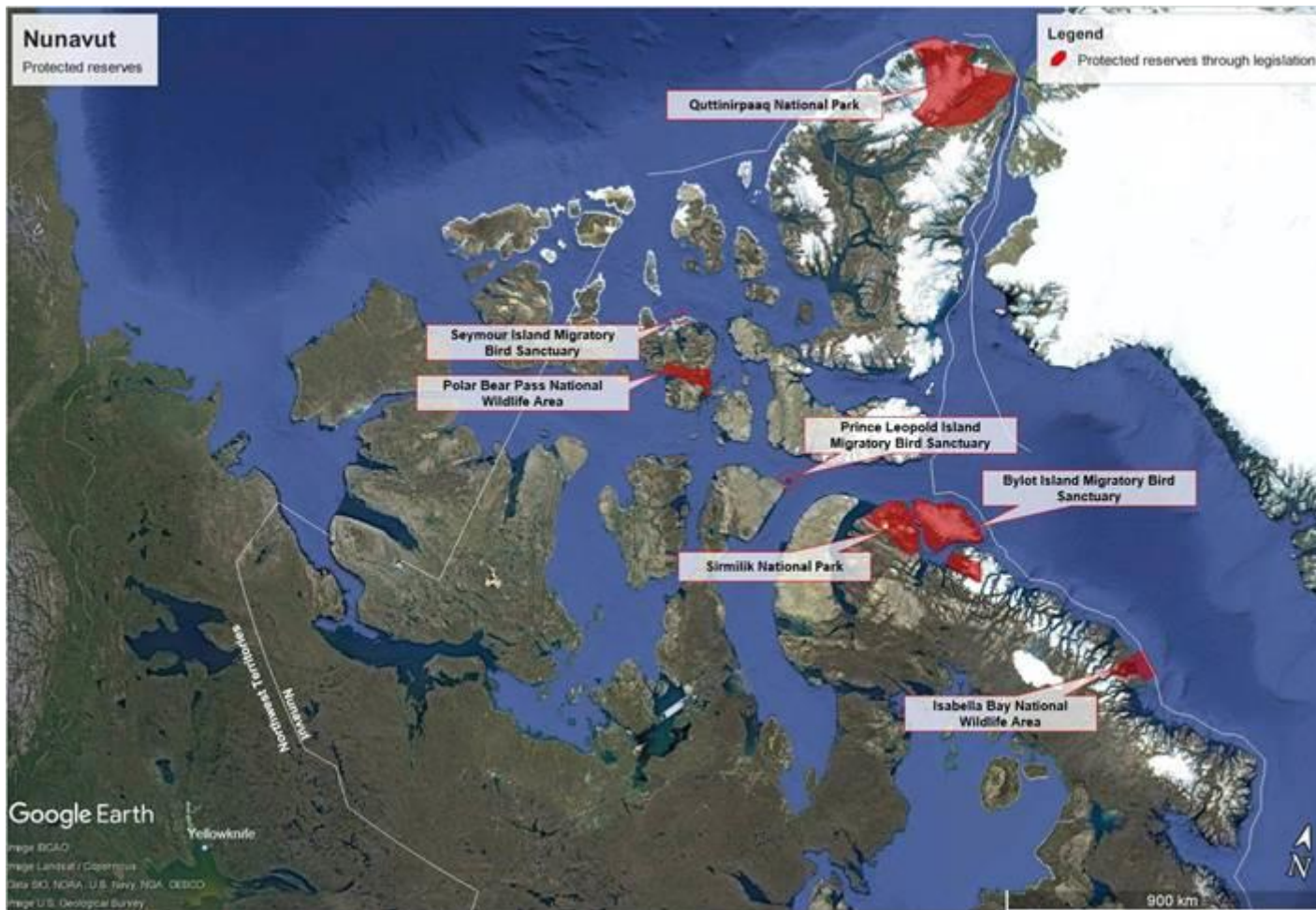


Concerning the planned flight operation during CoMet 2.0 Arctic, the aircraft will not fly at levels lower than 300 m above ground except for take-off and landing. Usually, the flight operation will be carried out from altitudes > 5 km. Some scientific questions, however, require to fly at flight altitudes of the order of 500-600 m above ground.

We have screened the specially protected areas in Nunavut (see map):

- Bylot Island Migratory Bird Sanctuary
- Seymour Island Migratory Bird Sanctuary
- Quttinirpaaq National Park
- Polar Bear Pass National Wildlife Area
- Prince Leopold Island Migratory Bird Sanctuary
- Sirmilik National Park
- Igaliqtuuq (Isabella Bay) National Wildlife Area



For any operation that requires flight altitudes below 5km we will avoid those designated areas and will make sure that no meteorological dropsonde will land in those areas. Concerning the caribou protection areas, the aircraft operation will begin not earlier than August 6, thus beyond the calving period period 15May -15 July.

Important:

We can avoid additional areas for dropsondes and/or flights below 5km, based on your request. Just let us know.