



Appendix G

Consultation Record

ANNEX G - Consultation Record

Last update: 2022-05-17 9:24 AM

Date	Engagement Type & Location	Participants	Summary	Records	Page number
5-Aug-2015	<ul style="list-style-type: none"> – Phone – Email 	<ul style="list-style-type: none"> – SAO 	<ul style="list-style-type: none"> – Sought letter of support for funding applications to install MET 	<ul style="list-style-type: none"> – Letter of support 	G-9
26-Nov-2016	<ul style="list-style-type: none"> – Council meeting (Hamlet Council Chambers) – Public meeting (School Lobby) 	<ul style="list-style-type: none"> – Council, SAO – Sanikiluaq community members 	<ul style="list-style-type: none"> – Introduced Project – Reviewed site selection: area south of airport identified as good location by Elders 	<ul style="list-style-type: none"> – Pictures of public meeting – PowerPoint presentation 	G-10 G-11
9-Dec-2016 to 20-Jan-2017	<ul style="list-style-type: none"> – Email (ongoing correspondence from 9-Dec-2016 to 20-Jan-2017) 	<ul style="list-style-type: none"> – Hunters and Trappers Association (HTA) 	<ul style="list-style-type: none"> – Reviewed site selection: three options south of airport recommended 	<ul style="list-style-type: none"> – Email correspondence – Maps indicating possible sites identified by HTA 	G-18
16-Jan-2017	<ul style="list-style-type: none"> – Teleconference 	<ul style="list-style-type: none"> – SAO 	<ul style="list-style-type: none"> – Updated on Project – Planned to visit community – Discussed MET installation requirements – Requested Council approval of MET installation 	<ul style="list-style-type: none"> – Meeting agenda – Project summary document for Council 	G-19 G-20
23-Mar-2017	<ul style="list-style-type: none"> – Council meeting (Hamlet Council Chambers) – Public meeting (School Gym) 	<ul style="list-style-type: none"> – Council – Sanikiluaq community members 	<ul style="list-style-type: none"> – Provided background on how MET tower site was selected – Described what MET tower will do – Outlined next steps – Sought Council support for first phase (data gathering) 	<ul style="list-style-type: none"> – Council meeting transcript – Public meeting transcript – Public meeting photos – Attendance log of public meeting – Presentation 	G-24 G-27 G-34 G-35 G-38
28-Mar-2017	<ul style="list-style-type: none"> – Letter 	<ul style="list-style-type: none"> – Council 	<ul style="list-style-type: none"> – Sent responses to community meeting questions 	<ul style="list-style-type: none"> – Letter 	G-49
May-16-2018	<ul style="list-style-type: none"> – Meeting (QIA Headquarters in Iqaluit) 	<ul style="list-style-type: none"> – QIA (former) President, P.J. Akeeagok 	<ul style="list-style-type: none"> – Sought letter of support for funding application 	<ul style="list-style-type: none"> – Letter of support 	G-51

Date	Engagement Type & Location	Participants	Summary	Records	Page number
May-16-2018	– Site visit (cancelled due to weather)	– Council	<ul style="list-style-type: none"> – Updated on first year of wind assessment – Sent presentation to SAO in lieu of planned site visit 	– Presentation	G-52
17-May-2018	– Email	– SAO	<ul style="list-style-type: none"> – Sought letter of support for funding application 	– Letter of support	G-61
25-Sep-2018	– Teleconference	– Council Mayor and SAO	<ul style="list-style-type: none"> – Informed Mayor and SAO that federal funding proposal was selected to advance to the next phase of consideration (due diligence phase) 	– Email correspondence	G-62
1-Sep-2018	<ul style="list-style-type: none"> – Teleconference – Email (ongoing correspondence from 1-Sep-2018 to 30-Sep 2019) 	– Council Mayor and SAO	<ul style="list-style-type: none"> – Updated on project (minimal project activity during this time as federal funding proposal was still being approved) – Notified Council of successful funding proposal Sep. 2019 	– Funding approval	G-67
1-Oct-2019	<ul style="list-style-type: none"> – Phone – Email (ongoing correspondence from 1-Oct-2019 to 30-Sep-2020) 	– Sanikiluaq community members	<ul style="list-style-type: none"> – Attempted to visit community (cancelled 3 times due to weather) 	– Presentation	
14-Oct-2020	– Meeting (Hamlet Office)	– Council, SAO	<ul style="list-style-type: none"> – Updated on project – Sought letters of support 	<ul style="list-style-type: none"> – Presentation – Pictures of public meeting – Letter of support for project – Letter of support allowing QBDC/NNC to act on behalf of hamlet in discussions with GN 	G-68 G-77 G-78 G-79
26-Mar-2021	– Email	– Council Mayor and SAO	<ul style="list-style-type: none"> – Prepared press release to announce funding – Sought quote from Mayor indicating project support 	– Press release inclusive of approved quote from Mayor indicating support for project	G-80

Date	Engagement Type & Location	Participants	Summary	Records	Page number
14-Oct-2021	– Meeting (Hamlet Office)	– Council, SAO	<ul style="list-style-type: none"> – Updated on project – Obtained reaffirmed support for project by Council 	<ul style="list-style-type: none"> – Presentation – Meeting minutes 	G-87 G-97
10-Feb-22	<ul style="list-style-type: none"> – Phone – Email 	<ul style="list-style-type: none"> – Community members (Allan Rumboldt, Silas Novalinga) – Hamlet departments 	<ul style="list-style-type: none"> – Arranged in-community engagement activities – Sought additional community contacts – Secured accommodations – Determined trip logistics 	– None	
11-Feb-22	<ul style="list-style-type: none"> – Phone – Email 	<ul style="list-style-type: none"> – Community members (Allan Rumbolt, Doug Chaisson) – Hamlet departments – Hunters and Trappers Association (HTA) 	<ul style="list-style-type: none"> – Organized community engagement activities – Confirmed additional contacts – Secured accommodations – Determined trip logistics 	– None	
15-Feb-22	– Phone	– Sanikiluaq radio station	– Scheduled advertisement for a call-in show during in-community visit (translation provided by radio station)	<ul style="list-style-type: none"> – Facebook Post/Flier – Draft On air announcement 	G-122 G-124
15-Feb-22	– Phone	– Sanikiluaq Health Centre (Jill Kelly-Wilson)	<ul style="list-style-type: none"> – Introduced Project and team – Scheduled visit to the health centre – Discussed health centre capacity 	– None	
15-Feb-22	– Phone	– Sanikiluaq hamlet departments	– Attempted to call various departments without success (Economic Development, Municipal Liaison Office, Drug and Alcohol Councillor, Iniqtirijiit Justice Coordinator, Canadian Prenatal Nutrition Program)	– None	

Date	Engagement Type & Location	Participants	Summary	Records	Page number
21-Feb-2022	– Meeting (constituency office)	– MLA for Hudson Bay, Daniel Qavvik	<ul style="list-style-type: none"> – Discussed project from point of view of individual land user and as MLA for community – Received support for project – Received feedback on additional considerations related to land uses in Project area 	– Meeting notes	G-125
22-Feb-2022	– Meeting (HTA office)	– Hunters and Trappers Association (HTA)	<ul style="list-style-type: none"> – Discussed Project and location – Received support for Project – Received recommendation for communications strategy and community liaison 	– Meeting notes	G-127
23-Feb-2022	– Radio call-in show	– Sanikiluaq community members (with translation by Mick Appaqaq)	<ul style="list-style-type: none"> – Introduced Project – Invited community members to call in to ask questions and provide comments – Invited community members to connect with Project team with additional questions, concerns, comments 	– Meeting notes	G-130
23-Feb-2022	– Meeting (Personal office)	– Hunter (Kenny)	<ul style="list-style-type: none"> – Discussed project and potential impacts related to wildlife, harvesting, availability of country foods, seasonality, and effects of economic development 	– Meeting notes	G-131
23-Feb-2022	– Meeting (Arctic College, Sanikiluaq)	– Arctic College (Deborah Thomas, Instructor)	<ul style="list-style-type: none"> – Introduced Project introduction – Shared maps with students and teachers – Invited student and faculty questions and comments – Received recommendations for collaboration opportunities between Project team and college including training and 	– Meeting notes	G-132

Date	Engagement Type & Location	Participants	Summary	Records	Page number
			facility use/support for virtual consultation – Identified opportunities for educating community on green energy – Received recommendations for potential risk mitigation strategies		
24-Feb-2022	– Meeting (hamlet office)	– Community Justice Coordinator (Sarah Emily)	– Discussed Project – Sought information on social community context, issues, support services – Received feedback on risks related to housing scarcity, including inability of people to relocate in response to family violence	– Meeting notes	G-137
25-Feb-2022	– Meeting (hamlet office)	– Council, Economic Development Officer	– Discussed Project – Responded to questions – Committed to follow up on energy pricing with QEC – Determined next steps to ensure Project success – Received recommendation to hire community liaison for Project success	– Meeting notes	G-138
25-Feb-2022	– Meeting (Project Team rental accommodations)	– Community Member (Allan Rumbolt)	– Discussed Project, economic opportunities, collaboration opportunities – Discussed interactions of wildlife around proposed Project site – Discussed socio-economic conditions, including housing issues and energy prices	– Meeting notes	G-139

Date	Engagement Type & Location	Participants	Summary	Records	Page number
25-Feb-2022	- Meeting (Nuiyak School)	- Nuiyak School (April Crabb, Principal)	<ul style="list-style-type: none"> - Introduced Project - Answered questions - Discussed collaboration opportunities with school on green energy education and possible Project naming competition - Received support from Principal for the Project and an offer to share Project information among staff and students 	- Meeting notes	G-141
25-Feb-2022	- Phone	- Sanikiluaq RCMP detachment	<ul style="list-style-type: none"> - Requested a meeting or call with an RCMP representative to determine possible security issues related to Project; however, limited capacity in detachment prevented discussion 	- None	
27-Feb-2022	- Meeting (Project team rental accommodations)	- Community Member (Joel Heath)	<ul style="list-style-type: none"> - Discussed Arctic Eider Society and possible collaboration opportunities - Requested information on cultural and socio-economic conditions - Received offer for crane rental which may be considered further as Project progresses 	- Meeting notes	G-143
28-Feb-2022	- Meeting (hamlet office)	- Economic Development Officer (Michael Rowan)	<ul style="list-style-type: none"> - Answered questions about Project financing and timelines - Received information on availability housing, construction workers, background on current economic development activities in Sanikiluaq 	- Meeting notes	G-144

Date	Engagement Type & Location	Participants	Summary	Records	Page number
			<ul style="list-style-type: none"> – Received recommendation for possible collaboration with existing construction companies – Received recommendation for developing worker housing that could benefit community in long-term 		
28-Feb-2022	– Meeting (Sanikiluaq Health Centre)	– Sanikiluaq Health Centre (Jill Kelly-Wilson, Head Nurse)	<ul style="list-style-type: none"> – Toured health centre – Discussed available services – Determined additional health care practitioners may be required during construction to meet capacity requirements 	– Meeting notes	G-146
28-Feb-2022	– Meeting (hamlet office)	– Income Support Coordinator (Martha Qittusuk)	<ul style="list-style-type: none"> – Introduced Project and potential opportunities/impacts – Discussed current employment trends in Sanikiluaq and possible Project benefits to those seeking employment – Discussed lack of housing availability – Identified opportunity for sharing future employment opportunities with community members currently on income support but looking for work 	– Meeting notes	G-148
21-Feb-2022 to 28-Feb-2022	<ul style="list-style-type: none"> – Facebook announcement – Facebook Group 	– Community members	<ul style="list-style-type: none"> – Published announcement about consultation activities – Received comments about lack of clarity related to Project impacts, concerns about noise, limited housing, – Received recommendation for more translated material to enable community feedback 	– Facebook posts	G-149

Date	Engagement Type & Location	Participants	Summary	Records	Page number
24-March 2022	– Council Meeting (Hamlet office)	– Hamlet Council, SAO	– Engaged on project ownership/community enhancement fund	– Presentation – Meeting notes	G-151 G-161
24-March 2022	– Meeting (HTA office)	– HTA members	– Engaged on project ownership/community enhancement fund	– Presentation – Meeting notes	G-151 G-162



ᑭᑭᑭᑭᑭ ᑭᑭᑭᑭᑭ

Municipality of Sanikiluaq
Sanikiluaq, Nunavut, Canada. X0A 0W0
Tel: (867) 266-7900 Fax: (867) 266-7924

sanisao@qiniq.com

August 5th, 2016

To Whom It May Concern:

The Municipality of Sanikiluaq endorses the proposal for the development of wind energy as outlined by Mr. Sheldon Nimchuk of the Qikiqtaaluk Business Development Corporation.

The reduced dependence on fossil fuels and its associated infrastructure is a laudable goal, and we whole-heartedly support it. Sanikiluaq's geographic location exaggerates the usage that would be typical in most other Canadian communities, and even a minor shift away from that establishment could have a significant impact.

Thank you,

Michael Rowan
Senior Administrative Officer





Sanikiluaq Wind Energy

COMMUNITY MEETING-NOVEMBER 22ND, 2016

Raglan Mine, Northern Quebec

Sanikiluaq Wind Potential

- ❖ 2016 Qulliq Energy Corp initiated a study to look at the potential for wind energy in all 25 communities.
- ❖ Sanikiluaq is within the top 5 communities with wind energy potential
- ❖ Sanikiluaq Development Corporation (SDC) and Qikiqtaaluk Business Development Corporation (QBDC) want to work with Hamlet to pursue the opportunity for wind energy generation



SDC, QBDC and Hamlet Collaboration

- Sanikiluaq Development Corporation (SDC)
- Qikiqtaaluk Business Development Corporation (QBDC)
- SDC/QBDC/Hamlet of Sanikiluaq Collaboration



የዋናው ምርጫ ድምፅ

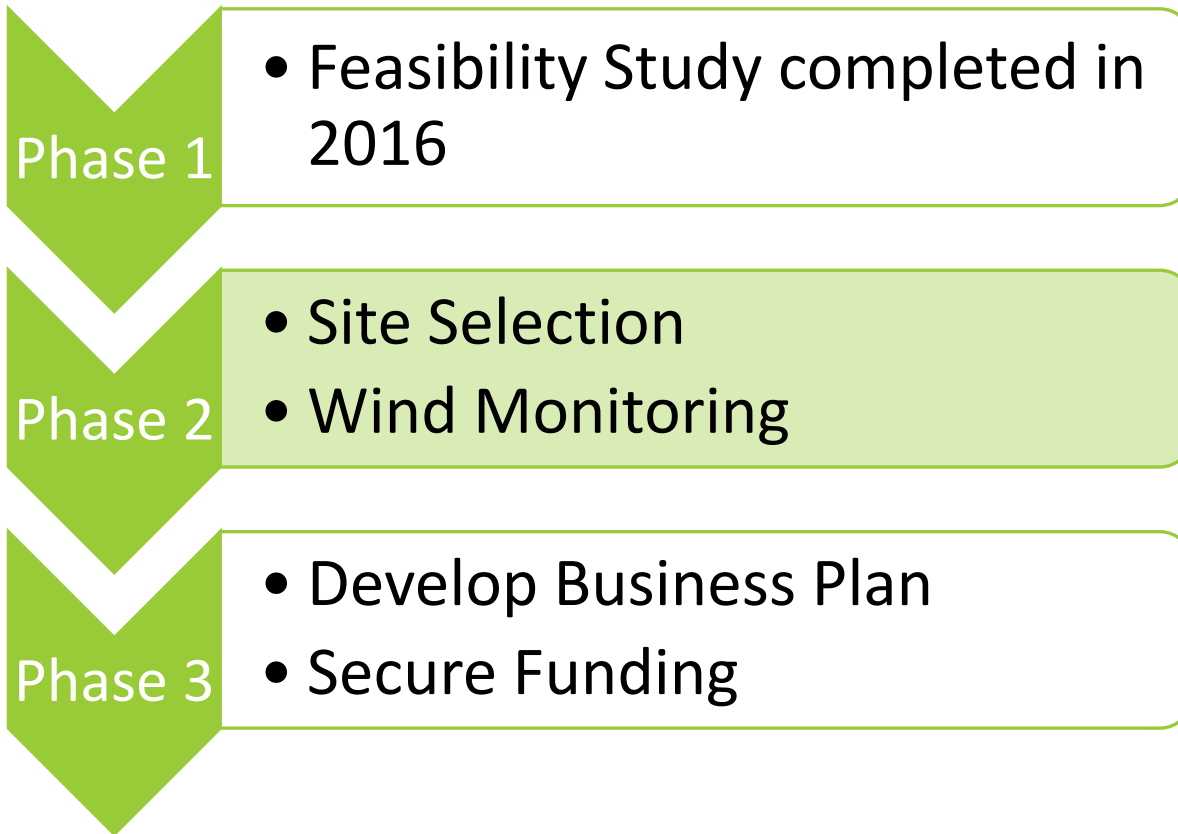
**Qikiqtaaluk Business
Development Corporation**

Benefits to Hamlet

- First wind project of its kind in Nunavut
- Opens the door to other renewable energy opportunities
- Ownership stake
- Training and employment opportunities
- Reduces dependence on diesel



Wind Energy in Sanikiluaq



Site Selection

Suggestions for sites?

Comments on Sites 1, 2
and 3?

Municipal Reserve Zone

Residential

Open Space

 500 m set back





sanihta

From: "Erin Mentink" <ementink@sanidevcorp.com>
Date: December-09-16 2:27 PM
To: <sanihta@qiniq.com>
Cc: "Sheldon Nimchuk" <snimchuk@qcorp.ca>; "Daryl" <ddibblee@rogers.com>
Subject: Sanikiluaq Wind Monitoring

Good afternoon Lucassie,

□□

Qikiqtaaluk Corporation (QC) and Sanikiluaq Development Corporation (SDC) are looking into wind power in Sanikiluaq. A community meeting was held on Nov 26, 2016 and the area south of the airport was chosen by locals and elders as a good location. The two sites are shown on the picture below (labeled Wind Met Tower 1 and 2).

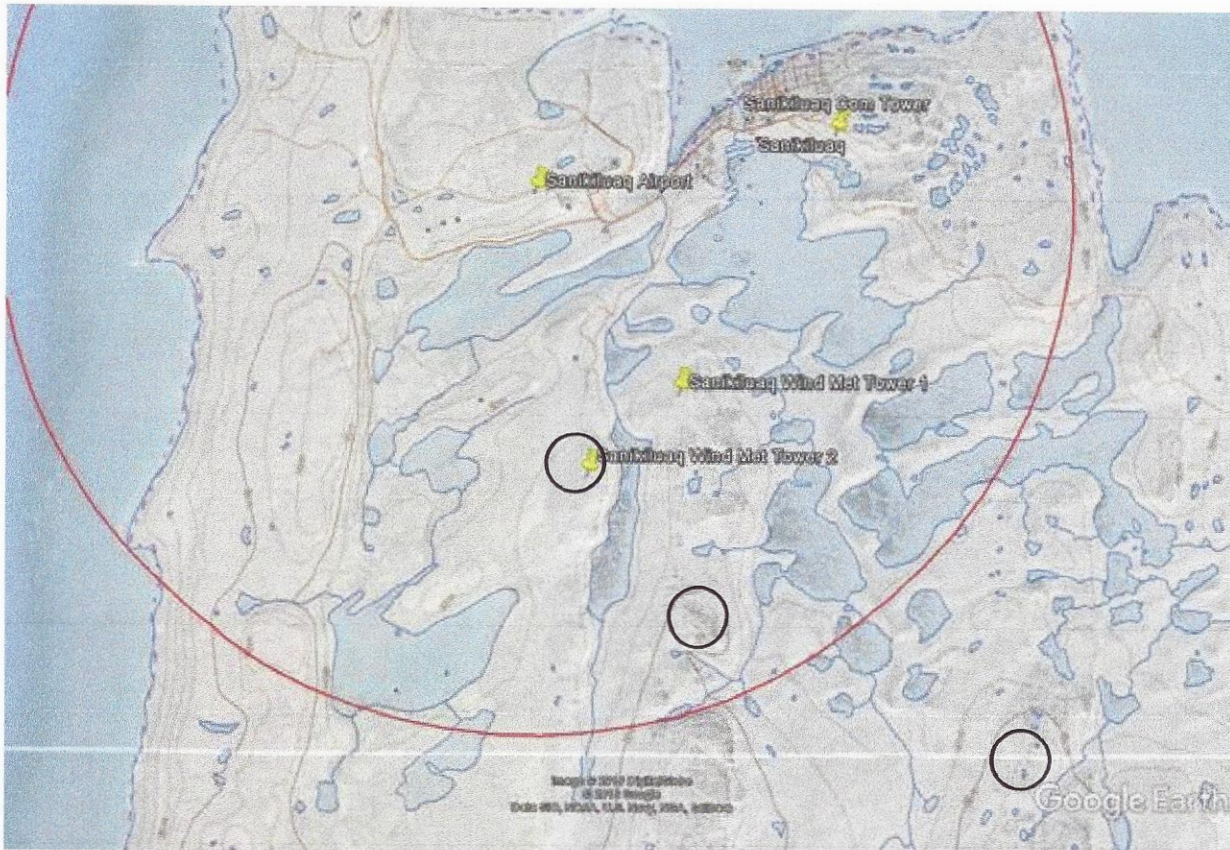
??□□□□□□□□□□□□□□ Do you have any thoughts if this is a good location?

??□□□□□□□□□□□□□□ Are there any worries about birds in this location?

□□

Thank you,
 Erin Mentink
 SDC
 902-802-9465

□□



Sanikiluaq Hunters & Trappers after discussion 3 Options of Wind Met Tower were selected.

Meeting Agenda

Sanikiluaq Wind Energy

Date: January 16th, 2017

Location: conference call

Time: 2:00 PM EST; 3:00 PM AST

Minutes taker: Erin Mentink

Call-in number: 1-866-969-8429

Attendees: Mike Rowan (Sani SAO)

Sheldon Nimchuk (QC)

Conference ID: 7756737

Daryl Dibblee, Erin Mentink (SDC)

Agenda Items:

1. Update on project
 - a. Site
 - b. Monitoring Phase
2. Community Visit
 - a. Dates
3. Council Meeting
 - a. Date/Time
 - b. Translator and translation equipment
4. Community Meeting
 - a. Advertising-Facebook, Radio, Flyers
 - b. Dates
 - c. Location
 - d. Translator
 - e. Equipment (translation equipment, projector, etc.)
 - f. Catering
5. Installation of MET Tower
 - a. Dates-week of March 13th (tentatively)
 - b. Two local labourers (2-4 days, ~8 hr days)
 - c. Snow machine rental (with kamatiq to carry equipment)
 - d. 2 kW generator
6. Other Items

Sanikiluaq Wind Resource Assessment -Overview

Project Purpose: To assess the wind in Sanikiluaq for potential wind energy generation.

Who: Qikiqtaaluk Business Development Corporation (QBDC), Sanikiluaq Development Corporation (SDC), Hamlet of Sanikiluaq

Project Timeline:

March 2016: Qilluq Energy Corporation (QEC) did a desktop study for all Nunavut communities to determine wind energy potential. Sanikiluaq was found to be one of the top 5 communities.

2016: QBDC secured funding from Qikiqtaaluk Corporation (QC), Polar Knowledge Canada, and Bullfrog for wind data collection in Sanikiluaq.

March 2017: Install a weather station to collect wind data and host engagement sessions

2017/2018:

- Assess data for wind energy generation potential
- Host Council meetings to provide updates on data and future activities
- Host community engagement sessions on clean energy
- Conduct necessary environmental surveys (Bird Studies, etc.)

Site Selection/Consultations:

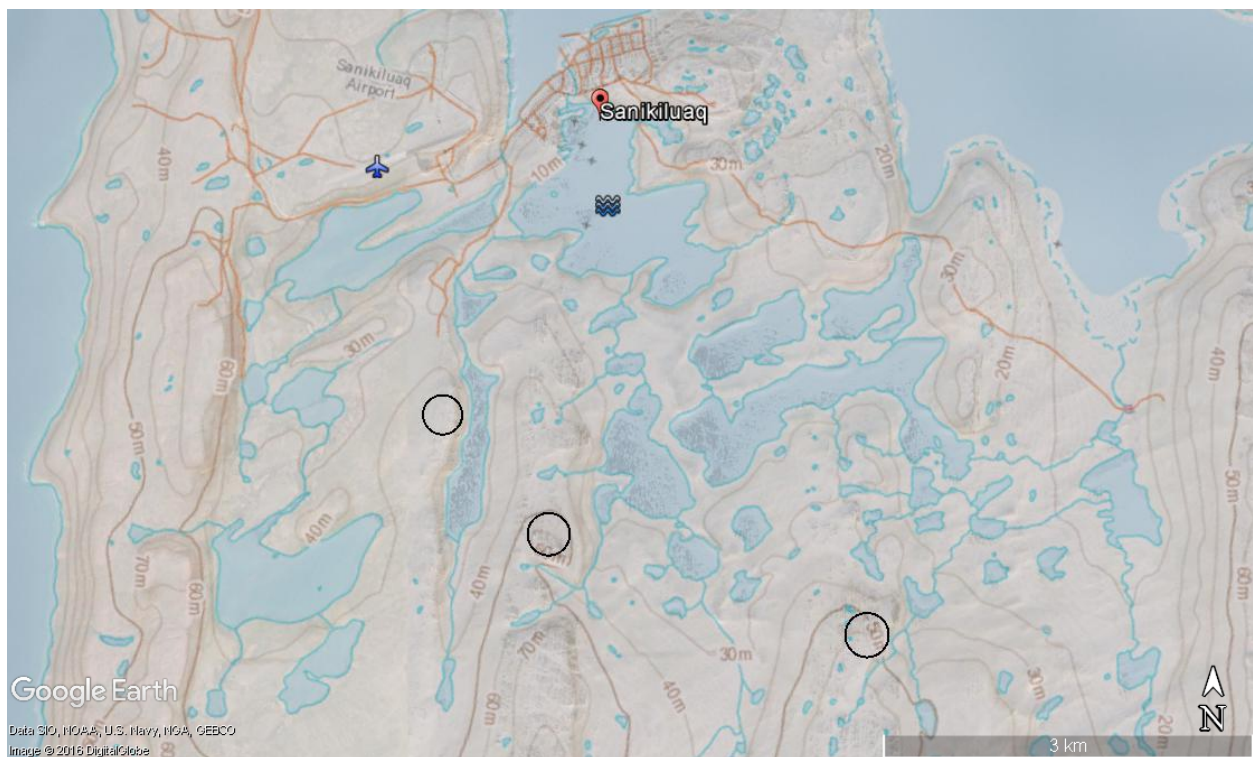
Consultant recommended locations to collect wind data:



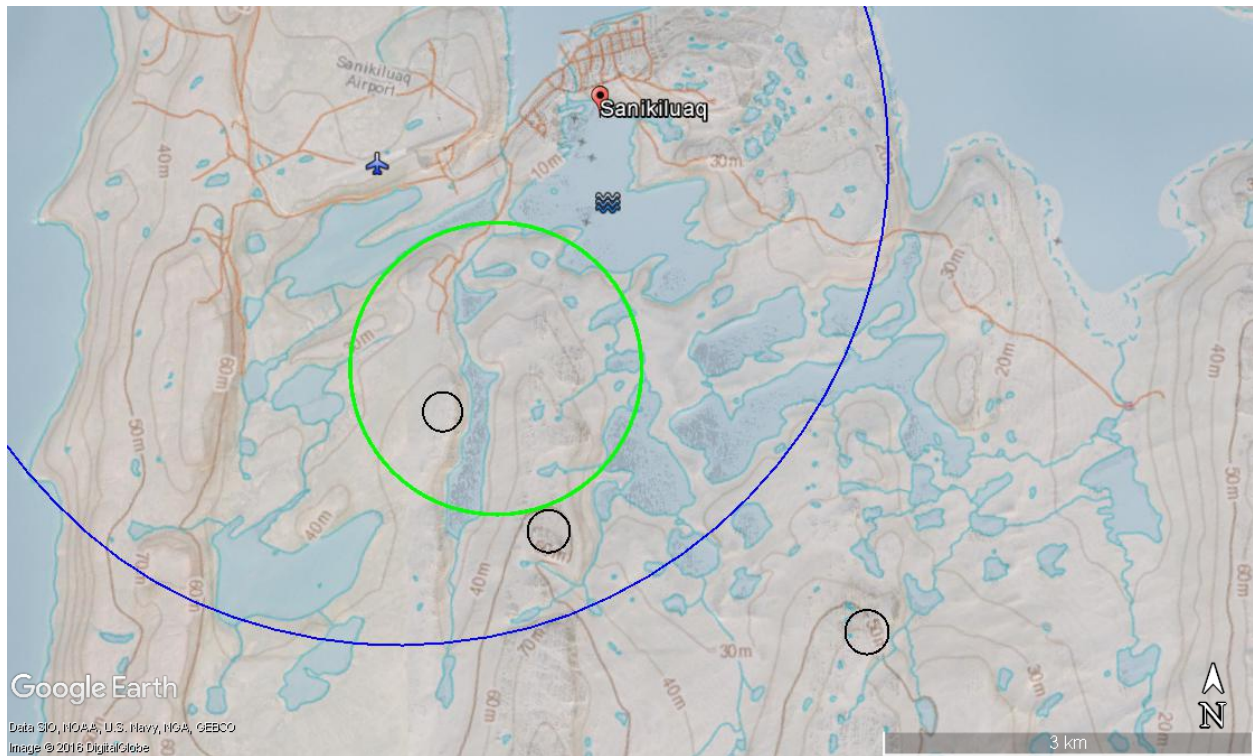
QBDC and SDC hosted a Council and community meetings in November 2016. New area recommended:



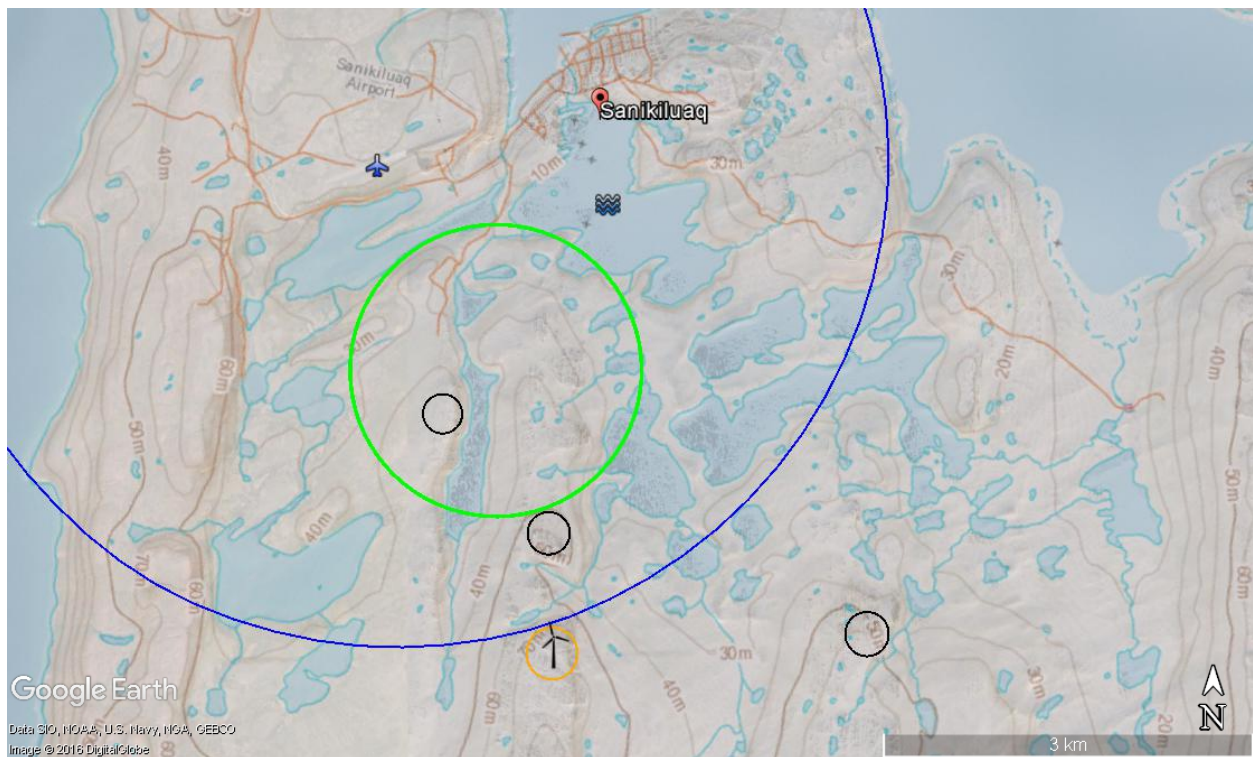
Hunters and Trappers Association (HTA) was consulted and they recommended 3 locations:



Transport Canada has restrictions for certain developments within 4 km of airport (blue circle):



Best site-orange circle (just south of HTA and community recommended areas, high elevation, outside airport 4 km radius):



Next Step:

End of March:

- QBDC and SDC to host Council and community engagement sessions to have a Q & A period, and to talk about opportunities for clean energy.
- Install weather station at approved site.

Question:

Does council approve the orange site to install a temporary (minimum one year) weather station? QBDC and SDC are happy address any questions at the March 23rd council meeting.



The meeting commenced around 1:30 pm and ended around 2:45 pm

Regrets that the deputy mayor could not attend.

Introductions of visitors with QBDC

- Sheldon Nimchuk (SN)
- Johnny Koloala
- Shaun Sharp
- Erin Mentink

- Provided background on the site selection process (meeting in Nov with community, HTA, etc)
- In reality, it will be 3-4 years until a wind turbine is installed.
- Slideshow presentation.
- At this stage we are just gathering site specific wind data to determine if the site is good.
- April will start the next stage and really start the community engagement process on clean energy. We will also focus on engaging the students at the high school.
- We will begin the environmental studies and bird studies. We will hire local people to help with the study
- We will also start doing some of the engineering studies.
- At this meeting we would like to get an idea of what the councillors like the next phase to be.
- If the project were to succeed it will likely be another 3 years in the future before the first turbine.
- We need to get support from QEC/GN
- We would like to come in several times next year regarding the revenues from the project and how those can go back into the community.
- QC has the same desire to work with other communities in Qikiqtani region



- Floor open for questions, comments, concerns, clarifications

Q: The tower, will it only be one tower? What size? Will there be more towers put up due to community getting bigger?

A: For this phase there is only one tower. With the information gained from this tower it will inform how much power can be gained from the wind. Based on preliminary studies there may be 3-4 wind turbines in the future and that could increase. But for this phase, there is only one tower and in 3-4 years there may be 3-4 turbines.

Q: Things are getting more expensive. Diesel gets more expensive. With wind turbines we'll see how they'll help. Anything erected on land must think about migratory animals. You mentioned about migratory ducks-their areas can be ruined. With the tower we will know if it will affect these animals.

A: yes, this is a long-term project. These studies/engagements will happen next year to make sure everyone is comfortable with the idea.

Q: Diesel engines that we are using-will they always be available? I remember one turbine when I was in Quebec, when no wind=no power.

A: QEC needs to approve and determine how wind and diesel will work together-so when there is no wind there will be diesel power. But with the wind there will be less diesel used. It is extremely important to ensure there is always power. Part of this study will look at battery storage therefore diesel, wind, battery all work together.

Q: In November, I wasn't here for the meeting. What about the turbines during stormy days will they freeze? Or will frost affect them?

A: There are different mechanisms to defrost the blades and safety factors if the wind is too strong the blades turn off. The study will look at if heating the blades is required. As we do studies we can talk about the options with the community that might be the right turbine for the community.

Q: What was read this morning-who is involved in this? QC and who else?

A: QC through QBDC saw the opportunity for wind potential and made applications for funding. When SDC and SDA are in existence they will work with the community

POWER OUTAGE

The community is in the process of creating SDC and SDA. So when this becomes formal in the future there is an opportunity to work with SDC and SDA then. To come back next year (April-march) we will look at future ownership model with the community. The community must benefit from the clean energy.



For council's information; A similar project in Iqaluit is happening. We are looking to install the tower soon. There is a long-term desire to work with all communities to start a clean energy ownership model if they desire. QIA and NTI are very supportive of the efforts of QBDC and clean energy. The federal government has a new budget and they have assigned funds for northern and remote communities for clean energy and to reduce reliance on diesel. Our belief is Inuit should own these utilities (not non-NU companies) and to make sure there is maximum benefit to the communities. We are also working with our president to discuss with the QEC minister/board to be able to offer QEC and GN help to fund and get investment necessary to move project forward in the future.

Q: You are here because of these guidelines (*briefing providing to council on project*). It says QBDC to work with SDC-who would be under SDC?

A: The funders of this project wanted to ensure we were working with the community to increase capacity and increase jobs so QBDC heard there may be a formal creation of SDC-so we identified we would work with them when it is formalized. Right now we are working with the council.

Q: Do you have SDC representatives here?

A: Not at the moment. JP is here to erect the tower. Our hope and belief is to get additional funding to work with the community to move the project forward. Because it is just the beginning of the project there are opportunities to be creative to develop an approach of how to work with the community.

Q: You were here in November, I wasn't here, that's the main reason I ask.

A: For the benefit of the councilors, last April our board gave approval to create QBDC-we have a mandate to focus on 13 communities in our region to create economic development opportunities through investment, and partnerships. We are working with the GN and Feds to create a new model of delivery since what's been happening since NU creation. This is the result of what was heard on the tour of the communities. It is a good idea to create QBDC to find new approaches to economic development. I just wanted to give the council the background.

We are all excited about clean energy projects in our region. I would like to thank council for their time. Part of the requirement for NPC and NIRB is we need council support of the first phase and a motion #. This will allow us to make formal applications for funding for the next phase which will be in depth community engagement. We very much thank council for that consideration. Please enjoy the shrimp we brought for your community gathering in April.



March 23rd, 2017 Sanikiluaq Community Information Session (Wind Resource Study) Meeting Transcript

Opening Prayer (Moses ***** -QC Board member, Sanikiluaq Elder)

Question (before meeting started): Why do we have to sign in?

Answer: As part of the NPC/NIRB project screening process they request details on the public consultation process including meeting minutes and names of participants.

Sheldon Nimchuk (QBDC) - SN

- Welcomed and thanked everyone for coming to the information session.
- Quick overview of the site selection process with input from the community members, HTA, council.
- Overview of the next steps for this phase (wind monitoring tower only, continued dialogue with Hamlet on clean energy)
- Powerpoint presentation
- Based on last visit and all the good information from the community we would like to put the tower in the location identified to start measuring data for 1-2 years.
- In addition to measuring data we would like to seek more money from the federal government to begin real conversation with the community regarding clean energy
- Ideas to use funding:
 - Begin communicating and dialogue with community about what clean energy products would mean.
 - Conduct studies to better understand the risk to migratory birds
 - Preliminary Engineering to better understand cost of project
- From QC's perspective, have discussions with the community to own the turbines and sell energy to QEC
- QEC legislation is only entity allowed to sell energy
- There have been public announcements from GN that they have challenges financing these projects because of all the other priorities required from the government.
- The federal government has indicated they have significant money available for clean energy in the north to reduce reliance on diesel



- As a regional development corporation, we can access this funding and would like to start working with all communities to see if clean energy projects are desired. QC would be an effective partner with the GN working towards the opportunities
- The first stage is to have conversations with the communities and government to present an option for the government to consider
- QBDC is doing a similar initiative in Iqaluit as well and will be installing a wind monitoring tower soon.
- There is no guarantee this will become a project but we believe it has potential to being to reduce reliance on diesel
- As a regional development corporation, we hope to have similar opportunities in all communities.

Opened the floor for questions/comments/concerns/additional information

Q: The Community, HTO and Hamlet discussed the location. I saw NIRB had a public comment period but I don't know if there were any concerns from the public comment period. This is the first stage-it may be appropriate to include how much it will cost, who will maintain it, any cost to the public, how it will work.

A: At this stage, HTA and Hamlet have input for the location of the tower.

- Ownership, jobs, costs of the project will be thought about during the next stage of the project. The next phase will be led by QBDC and in the future, we will work with the community to figure out all of these things. We will also work with the GN and QEC. QBDC will bring the expertise to have this information developed and will share this with the community. This will include employment opportunities both during the construction phase and long term careers with the project.
- We want to take this opportunity to work with the community over the next few years so ultimately Sanikiluaq benefits (not only with jobs but in ownership stake) if GN/QEC sees value of development corporations taking the lead to work with communities.
- There are many questions that will need to be answered and this is the beginning of having that conversation so we can share and make decisions together.
- Does that respond to your question?

A: yes

Q: Once the tower is in place, it will start collecting data. How do you monitor the data? Is it uploaded daily or stored onsite?



A: Data will be collected every 3 weeks via satellite communication. It is possible to collect the data everyday via satellite but this is more expensive. So every 3 weeks we will collect and process the data and will share this with the community (maybe monthly if possible)

QEC is also providing information from the diesel generating stations so we can correlate when wind is happening and when there is the most demand on diesel generators. With battery storage, can balance most efficient use of generators in a manner that can accept most or all energy from wind.

Q: To make it viable, what is the minimum required wind and is there such as thing as too much wind?

A: We look for wind speeds of at least an average of 6 m/s (~22km/hr). The airport weather station says there is an average wind in that area around 7.5 m/s so that is good. With max wind speeds, there may be times when it is too windy and there will be mechanisms that will shut the turbines down at that time.

Q: You mentioned you have stat from the airport-why collect data again?

A: There are a couple of reasons:

- The data collected at the airport is only for a specific elevation, where the site is proposed, it's at a higher elevation and the tower is higher because we need to collect the data at the height of the wind turbine.
- One of the most important aspects of proving the technical capability of the wind resource at the specific site.
- Also, the banks and investors who invest in clean energy won't invest unless there is at least one year of site specific data.

So this effort is to verify what happens at that height and to have reliable data so investors will invest.

Q: There are wind turbines all over Canada and the world-have you looked at any studies of the effect of turbines on migratory birds?

A: We will do a site specific study next year but there is all kinds of information on risk to birds and we hope that by putting the tower up this year we can get more money to do these studies.

Q: To get back to the questions at the beginning of the meeting (re: the requirement to sign in). We are weary NIRB, NPC will use this information for their own purposes. We haven't heard much on who NIRB



is, if you could leave their info to us at the end of the meeting please. I understand it is federal funding for this project. Have the feds assigned anyone in particular to take part in the initiative?

A: We can give information on NIRB. The federal government does not assign people on the project. They provide the funding and we choose who we believe is best to do the project. Agencies of federal government have regulatory authority so we must meet all of these requirements and conditions.

Q: Who have you funding to do these studies?

A: QC provided cash so we can use this to leverage funding from the feds. The QC board has approved money for the next phase of the Sanikilauq project so we can get additional funding from the federal government and this will allow us to move the project forward.

Q: I wasn't asking about funding, I understand regarding the feds. Who authorized you to do this study?

A: Our Board/QC believe there is opportunity so we bring these ideas to the communities to see if they're interested in clean energy in effort to find new ways to create economic development for communities.

Q: I wasn't here in November when you came to the community. Are you the same people here as in November?

A: Yes

Q: The same question I asked earlier and regarding correspondence from you: "QBDC will work with SDC....." Was SDC to take part in this?

A: As we talked about with the council today-when this opportunity was being explored in July, the feds wanted their funding to help develop capacity at the local level so we made contact with SDC as there was an effort to make a local development corporation. So in our larger project-in our application we said we would help develop capacity at the local level. In November when we visited, we learned that there are on-going discussions regarding SDC and still more work to have SDC formalized. As community determines this over the next few months, QC is ready to work with whoever the community wants us to work with. As QC we are lead proponent.

Q: *In Inuktitut and not translated:* Participant read the pamphlet "Daryl phone #: 506-...." Who in SDC is the go to person to pursue this phase? It was replied there was no one to address but according to pamphlet, it says Daryl.

A: In November there was a question if SDC has an office in Sanikilauq. I don't want to speak on behalf of Daryl because he needs to speak to the community but this is an effort to move this project forward



Q: So what is the question at hand?



Q: If this tower with the propeller, will there be benefits?



ᑭᑭᑭᑭᑭᑭᑭᑭ ᑭᑭᑭᑭᑭᑭᑭᑭᑭᑭ
ᑭᑭᑭᑭᑭᑭᑭᑭᑭᑭᑭᑭᑭᑭᑭᑭᑭᑭ

Qikiqtaaluk Business
Development Corporation

A: This tower will only record information. The real benefits will be if it shows potential to generate energy.

Q: I am picturing all these wires everywhere to connect to the house to provide electricity.

Q: As a Sanikiluaq resident, we are coming to realize we do need clean energy options and we need someone in the community to help develop this. SDC is not agreed to by community therefore we need to decide who at the community level will be this person. If at first it fails, we will try again to prevail. I think we are done.

A: Thanks for coming out and sharing your thoughts.

A: Just one comment. You shared pamphlets with people is says QBDC and SDC-we don't know anything about SDC, nobody told us. Sheldon, you might know more since it is in the pamphlet. Can you tell us about them.

A: I know there are some discussions that need to happen between SDC and the community. At the time the pamphlet was produced it was thought the Hamlet agreed to SDC. The logo can be removed. Ultimately, QC wants to have dialogue with the Hamlet and have them make decisions.

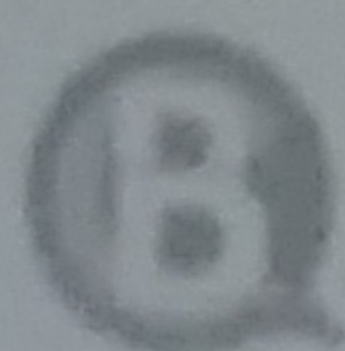
Q: OK, yes we are happier now and understand.



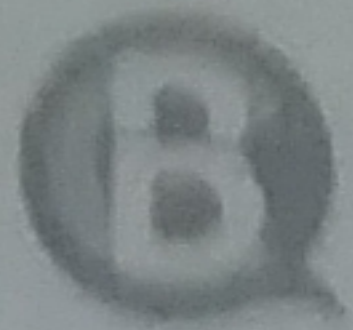


Information Session Attendees

Name (please print)	Signature
1. John Thomas	
2. Tony Audia	
3. Lucassie Akkumavik	
4. Annie Igaluq	
5. Rita Lucy Igaluq	
6. Aleetppate	X
7. Caroline Tookalook	
8. Ida Kavik	
9. Annie Kavik	X For 6A
10. AC 215	
11. Allen Rumbert	
12. Paul Igaluq	
13.	
14. Elijassie Salla	
15. Silas Novalinga	
16. Lizzie Kudluarok	
17. MOSES NOVALLINGA	
18. Moses Appa Qaq	
19. Annie Amitook	
20. Salammie Kowcharlie	
21. Hannah Uprik	
22. Dinah Kavik	
23. Maggie Kudluarok	
24. Annie Grikotailak	
25. Sarah Kudluarok	



Name (please print)	Signature
26. ANNESIE APPAGIA	ANNESIE APPAGIA
27. RUPERT UPPIK	Rupert Uppik
28. Tim Hoyt	Tim Hoyt
29. Philpousie Arragutainie	Philpousie Arragutainie
30. Nary Igaluk	Nary Igaluk
31.	
32.	
33.	
34.	
35.	
36.	
37.	
38.	
39.	
40.	
41.	
42.	
43.	
44.	
45.	
46.	
47.	
48.	
49.	
50.	



ᐱᕐᕐᕐᕐᕐᕐ ᐱᕐᕐᕐᕐᕐᕐ
ᐱᕐᕐᕐᕐᕐᕐᕐᕐ ᐱᕐᕐᕐᕐᕐᕐ
Qikiqtaaluk Business
Development Corporation

Qikiqtaaluk Business Development Corporation Sanikiluaq Wind Study
Community Information Session
March 23, 2017 6:30 pm

Information Session Attendees

Name (please print)	Signature
1. Lucy Leppik	Lucy Leppik
2. Betsy Menke	Betsy Menke
3.	
4.	
5.	
6.	
7.	
8.	
9.	
10.	
11.	
12.	
13.	
14.	
15.	
16.	
17.	
18.	
19.	
20.	
21.	
22.	
23.	
24.	
25.	



$\rho \triangleright C^a$ $\sigma \sqsubset b$

G-38



ᖃᖅᑲᖅᑲᖅ ᑲᖅᑲᖅᑲᖅ
ᐱᖅᑲᖅᑲᖅᑲᖅᑲᖅ ᑲᖅᑲᖅᑲᖅ

Qikiqtaaluk Business
Development Corporation



Photo: Justin Bulota
© Tugliq Energy Co.





ᖃᕈᕐᕐᕐᕐᕐᕐ ᕐᕐᕐᕐᕐᕐᕐᕐ
ᕐᕐᕐᕐᕐᕐᕐᕐᕐᕐ ᕐᕐᕐᕐᕐᕐ

**Qikiqtaaluk Business
Development Corporation**



ᖃᕈᕐᕐᕐᕐᕐ ᕐᕐᕐᕐᕐᕐ
ᕐᕐᕐᕐᕐᕐᕐᕐᕐ

QIKIQTAAALUK CORPORATION
& Group of Companies

1-867-979-8400 | www.qcorp.ca



ᖃᕈᕐᕐᕐᕐᕐ ᕐᕐᕐᕐᕐᕐᕐᕐ
ᕐᕐᕐᕐᕐᕐᕐᕐᕐᕐ ᕐᕐᕐᕐᕐᕐ

**Qikiqtaaluk Business
Development Corporation**



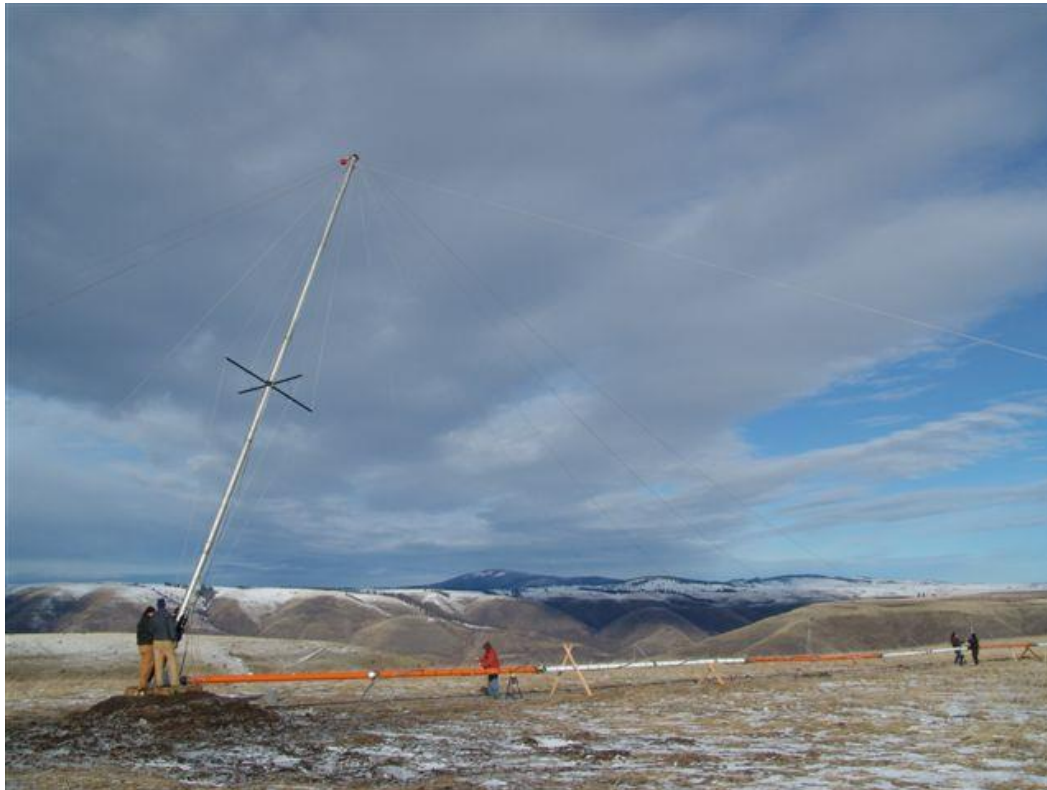
**Polar Knowledge
Canada**

**Savoir polaire
Canada**



ᖃᕈᕐᖃᕐᕕᕐᕕᕐᕕ ᕐᕕᕐᕕᕐᕕᕐᕕᕐᕕ
ᕐᕕᕐᕕᕐᕕᕐᕕᕐᕕᕐᕕᕐᕕ ᕐᕕᕐᕕᕐᕕᕐᕕ

Qikiqtaaluk Business
Development Corporation

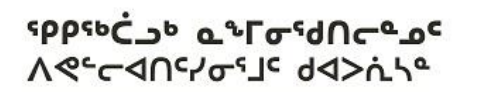




ᖃᕈᕈᖅᕕᕐᕕᕐ ᕕᖃᕐᕕᕐᕕᕐᕕᕐ
ᕕᕐᕕᕐᕕᕐᕕᕐᕕᕐᕕᕐ ᕕᕐᕕᕐᕕᕐ

Qikiqtaaluk Business
Development Corporation





**Qikiqtaaluk Business
Development Corporation**





ᖃᕈᕐᓐᓇᕐᓇ ᓇᕐᕐᕐᕐᕐᕐᕐᕐᕐ
ᐱᕐᕐᕐᕐᕐᕐᕐᕐᕐᕐᕐᕐᕐᕐᕐ

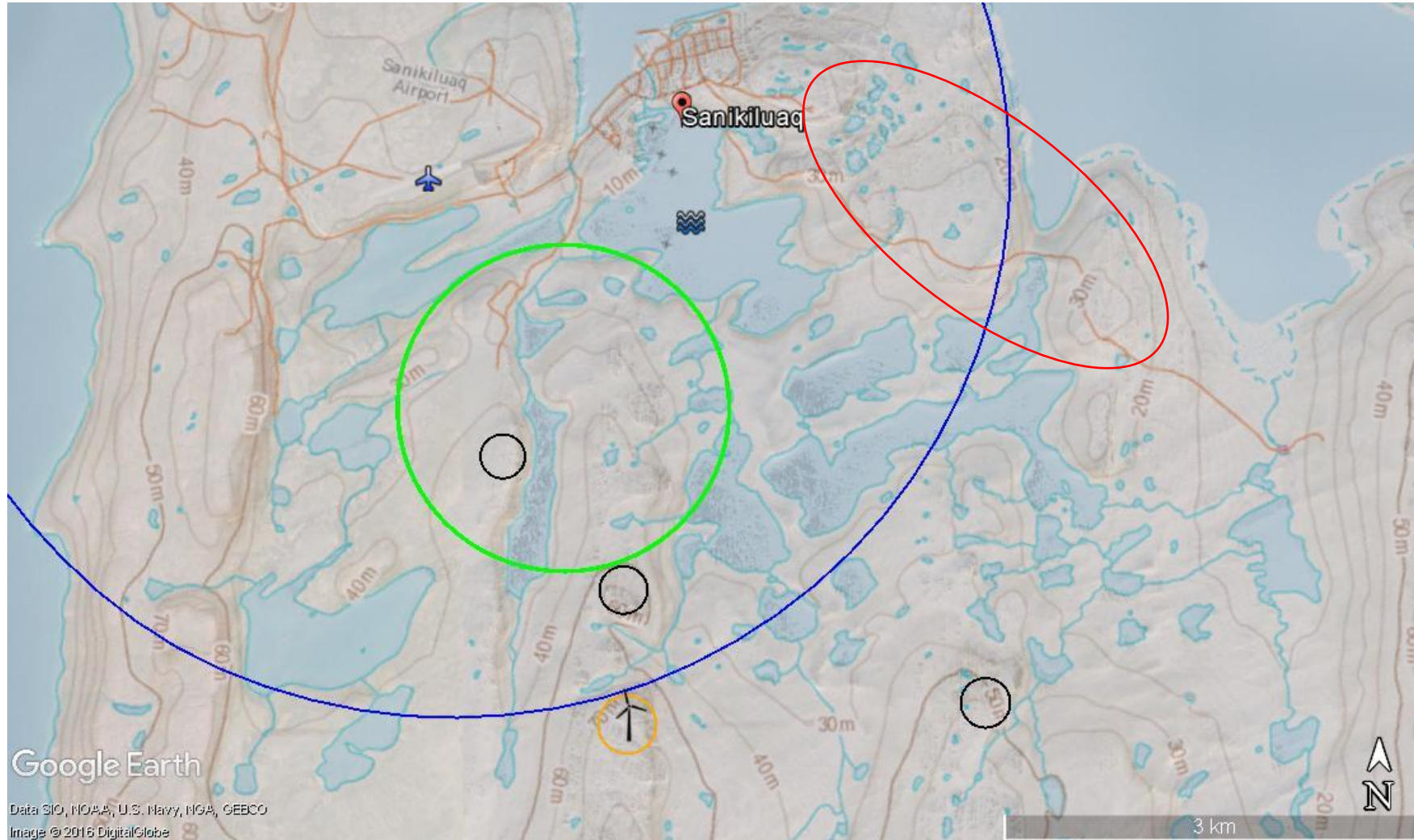
Qikiqtaaluk Business
Development Corporation





ᖃᕈᕐᕐᕐᕐᕐᕐ ᕐᕐᕐᕐᕐᕐᕐᕐ
ᕐᕐᕐᕐᕐᕐᕐᕐᕐᕐ ᕐᕐᕐᕐᕐᕐ

Qikiqtaaluk Business
Development Corporation



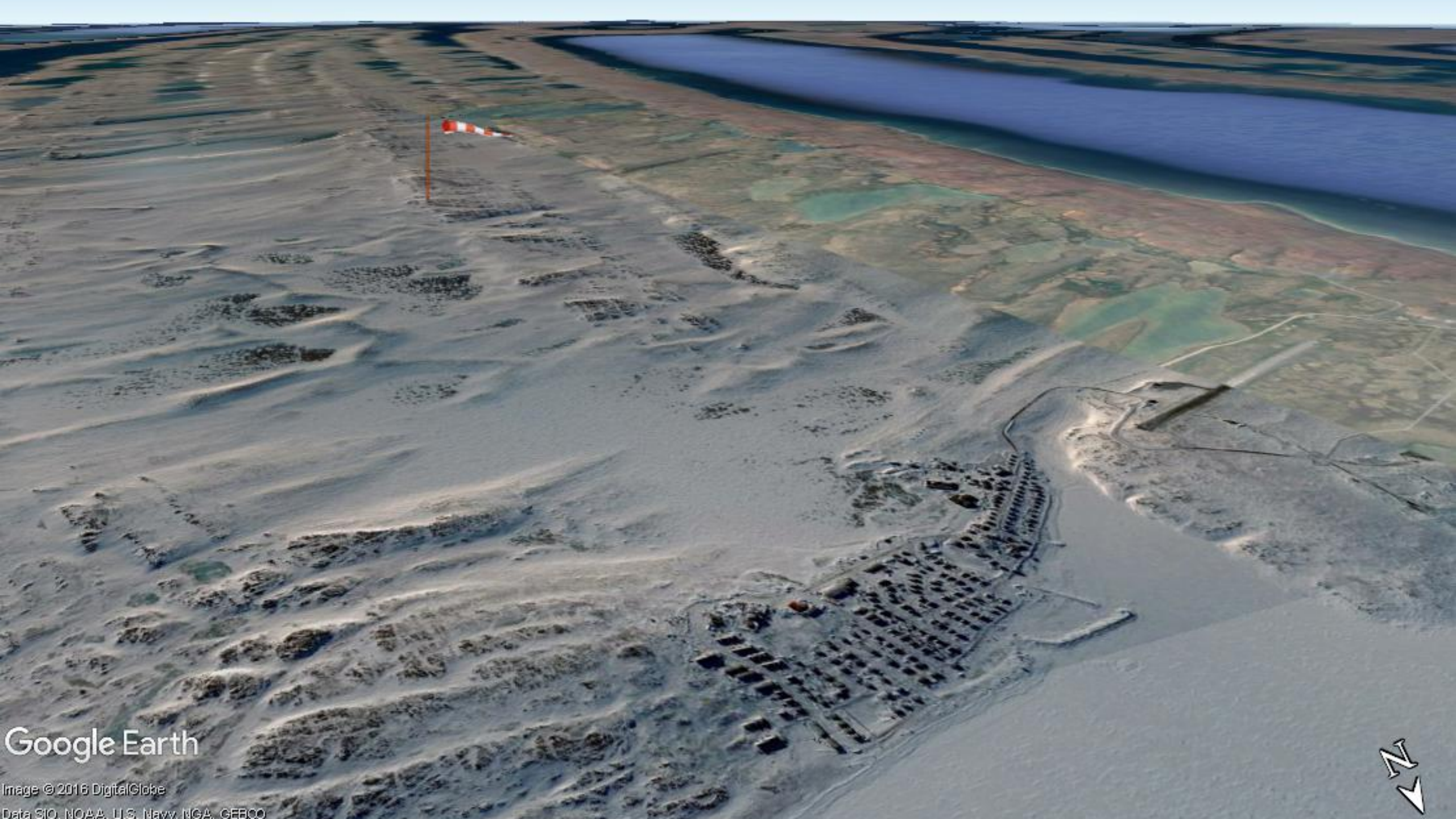


Google Earth

Image © 2016 DigitalGlobe

Data SIO, NOAA, U.S. Navy, NGA, GEBCO



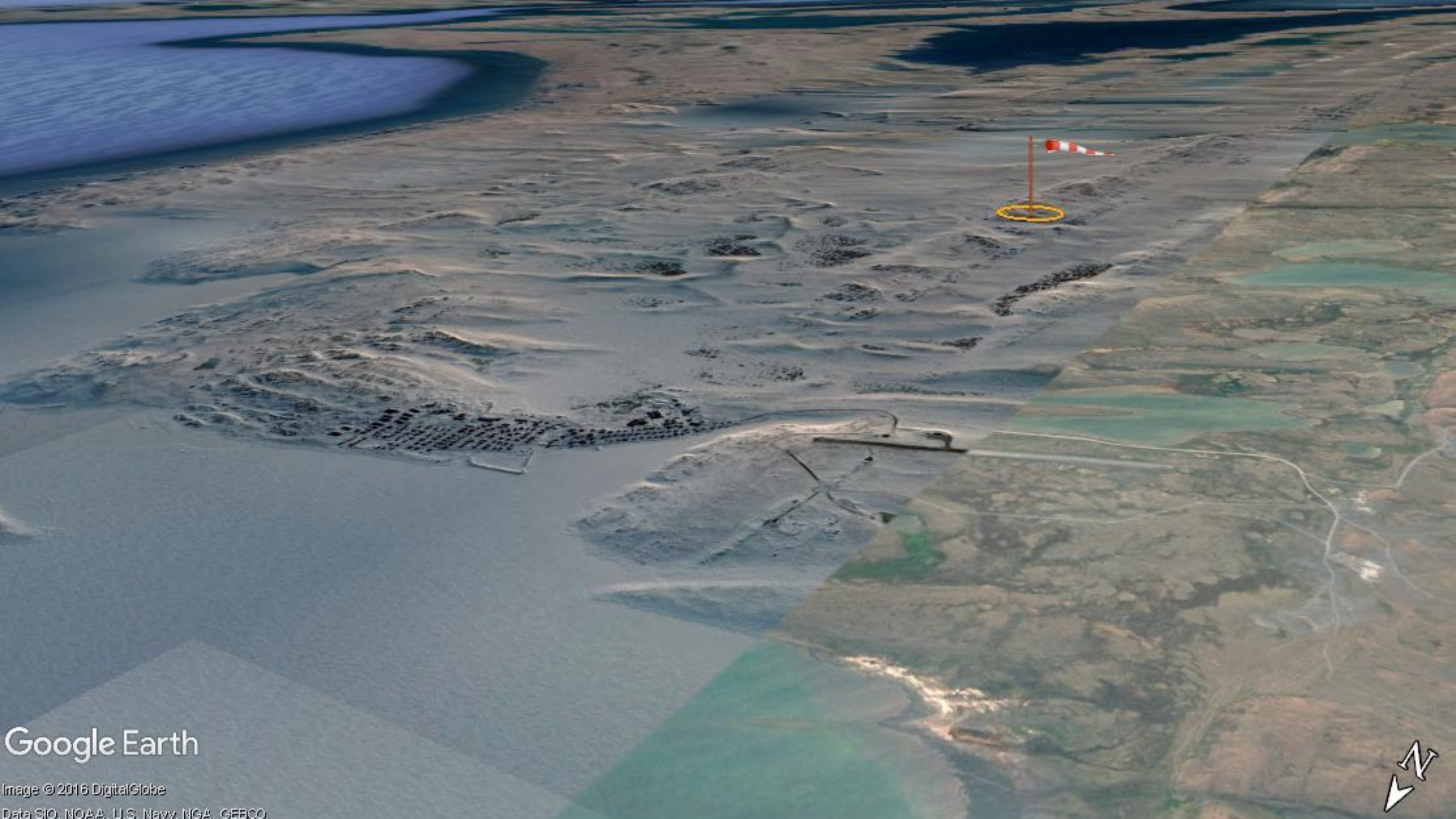


Google Earth

Image © 2016 DigitalGlobe

Data SIO, NOAA, U.S. Navy, NGA, GEBCO





Google Earth

Image © 2016 DigitalGlobe

Data SIO, NOAA, U.S. Navy, NGA, GEBCO





March 28, 2017

Mike Rowan
Senior Administrative Officer
Municipality of Sanikiluaq
PO Box 157
Sanikiluaq, Nunavut X0A 0W0

Dear Mr. Rowan,

I would like to thank yourself, the Hamlet council, and the community members for meeting with myself and the other project representatives and participating in the information session and discussions on the wind resource assessment project on March 23, 2017.

During the community meeting, there were a few items which was requested of us to follow up on. Please share the following information with the community members regarding these requests.

One of the questions during the community meeting was why the meeting participants were required to sign in. It was explained that this project is required to go through the Nunavut Impact Review Board's (NIRB) screening process and as part of this, the NIRB requires a community engagement report. Provided with this letter is NIRB's "Proponent Guide to Conducting Public Consultation" and highlighted is their general requirements for public engagements-including record of the names of participating individuals.

Additionally, there was a request for NIRB's contact information:

Website: www.nirb.ca
Address: 29 Mitik Street, PO Box 1360
Cambridge Bay, NU
X0B 0C0
Phone: 1-866-233-3033

Further questions were regarding if any comments were received during NIRB's public comment period. Provided is the NIRB's "Screening Decision Report" which outlines the comments received. To summarize, there were no comments from the public, INAC had no comments and Environment and Climate Change Canada (ECCC) had the following comment:

- There are potential risks to migratory birds from the installation of the guyed meteorological tower; however, they noted that the Hunters and Trappers Association provided recommendations to the Proponent on the preferred locations to minimize impacts to wildlife, and specifically to birds and therefore they had no concerns at this time.

All information the NIRB receives and distributes on proposed projects is public information and can be found on NIRB's public FTP site should anyone be interested.



Sheldon Nimchuk

ከመገንጠል ጋር ለሕይወት ወይም ለጥቅም

SANIKILUAQ CLEAN ENERGY

.... ወይም, ወይም

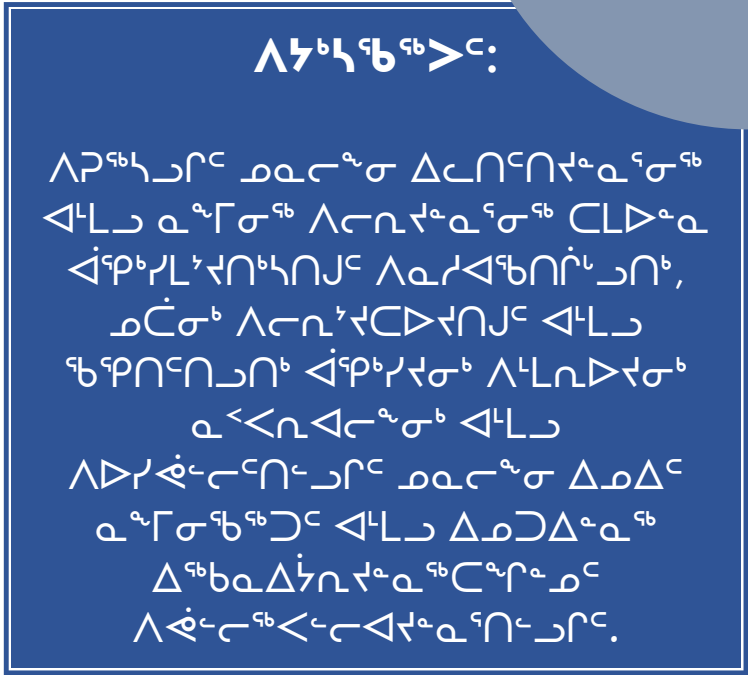
....your land, your power



ከመገንጠል ጋር ለሕይወት ወይም ለጥቅም

Qikiqtaaluk Business
Development Corporation

ሪፖርት ማድረግ | Sheldon Nimchuk
snimchuk@qcorp.ca
867-979-8405



Nunavut Nukkiksautiit Corporation

QC's newest wholly-owned subsidiary company

[illegible]

Qikiqtani's clean energy leader through establishing sustainable, regional-community owned clean energy projects that foster economic development now and for Qikiqtani's future generations.

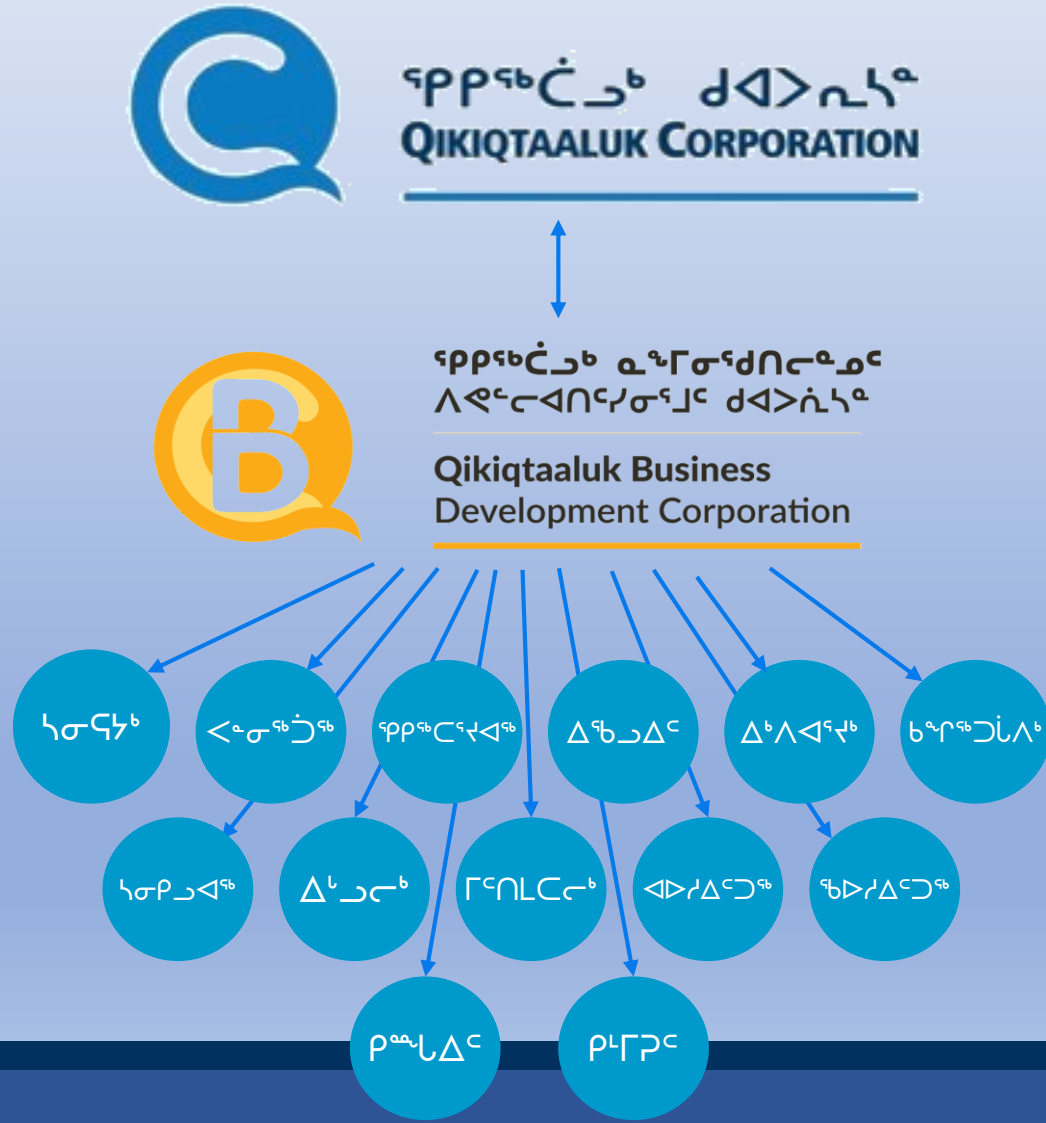
[illegible]

QC strives to be a major contributor to all sectors of the Nunavut economy. We have identified the opportunity to expand our service through contributing to the energy sector. Our vision is advancing clean energy projects and creating employment and financial opportunities for Inuit in the Qikiqtani Region.

QC created the Nunavut Nukkiqsautiit Corporation to deliver this goal. NNC will be a Clean Energy Developer in Nunavut to foster energy independence for Qikiqtani communities.



Community Ownership Model

[illegible]

NNC will partner with each of the Qikiqtani communities through a regional-community ownership structure to advance clean energy projects. This ownership structure will maximize project benefits for the community; providing economic development diversification, supporting community-based career development, and empowering community decision making.

ካጋሊጥፍ ወዖርጋጋቦርቢወፍጋር ለርቢጋፍካር Clean Energy Careers

- ልርዕወጋቦካር
- ጋጋወጋጥፍ-ጋፍዖርጋሊጥ ልፍቤጋጋካር
- ልፍቤጋጋጥፍ ለጥርጋቦካር
- Training opportunities
 - Long-term jobs
 - Career development



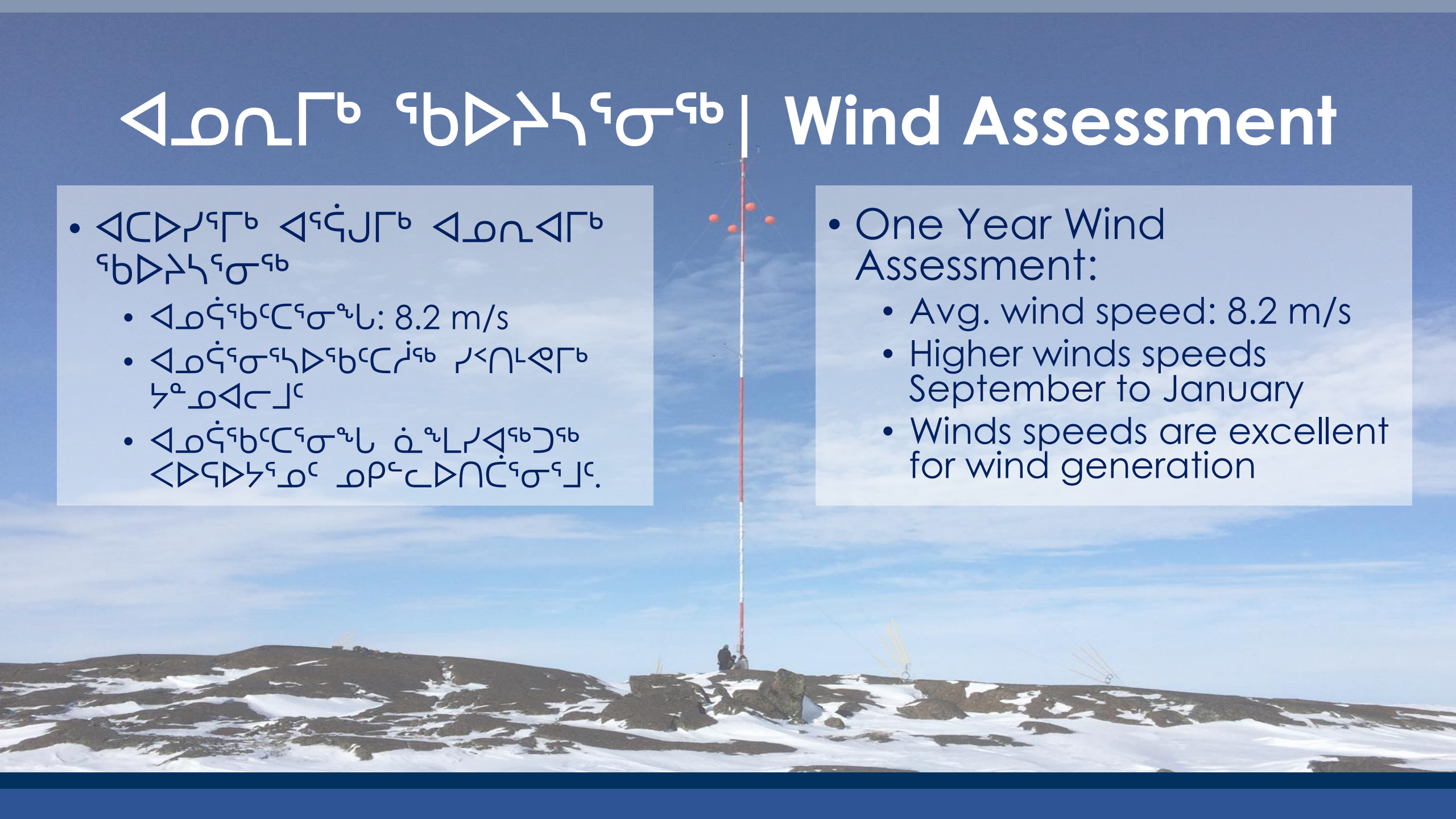
ՀԵՐԴԵ ԳԵՃՔԻՐՈՒ | Wind Monitoring



ᐱᓄᓚᓴ ᑭᓂᐅᓴᓯᓂᑦ | Wind Assessment

- $\Delta C_D \rho V \Gamma_b \Delta \dot{\zeta} \Gamma_b \Delta m \Delta \Gamma_b$
 $\dot{\zeta}_b \Delta \rho \dot{\zeta} \sigma \dot{\zeta}_b$
 - $\Delta m \dot{\zeta}_b C_D \sigma \dot{\zeta}_L: 8.2 \text{ m/s}$
 - $\Delta m \dot{\zeta} \sigma \dot{\zeta}_b \Delta \rho \dot{\zeta}_b \rho \Delta \Gamma_b$
 $\dot{\zeta} \Delta \Gamma_b \dot{\zeta}$
 - $\Delta m \dot{\zeta}_b C_D \sigma \dot{\zeta}_L \dot{\zeta}_L \rho \Delta \dot{\zeta}_b \dot{\zeta}_b$
 $\Delta \rho \Delta \dot{\zeta}_b \dot{\zeta} \dot{\zeta} \dot{\zeta} \Delta \rho \Delta \dot{\zeta}_b \dot{\zeta}_L$

- One Year Wind Assessment:
 - Avg. wind speed: 8.2 m/s
 - Higher winds speeds September to January
 - Winds speeds are excellent for wind generation



ᐅᐅᐅᐅᐅᐅ

THANK YOU

ᐱᐅᐅᐅᐅᐅ?

Questions?



ᐅᐅᐅᐅᐅᐅ ᐅᐅᐅᐅᐅᐅᐅᐅᐅ
ᐱᐅᐅᐅᐅᐅᐅᐅᐅᐅᐅᐅᐅᐅᐅᐅ

Qikiqtaaluk Business
Development Corporation

ᐅᐅᐅᐅᐅᐅᐅ
ᐅᐅᐅᐅ ᐅᐅᐅᐅ

snimchuk@qcorp.ca
867-979-8405

Contact:

Sheldon Nimchuk
snimchuk@qcorp.ca
867-979-8405



ᓂᓕᓕᓕᓕ ᓂᓕᓕᓕᓕ

Municipality of Sanikiluaq
Sanikiluaq, Nunavut, Canada, X0A 0W0
Tel: (867) 266-7900 Fax: (867) 266-8674

sanisao@qiniq.com

May 17th, 2018

Dear Mr. Nimchuk,

We are very pleased to learn about the clean energy initiatives QBDC and QC are advancing in the Qikiqtani Region. As the Designated Inuit Organization for the Qikiqtani Region, we are responsible for advancing the rights and benefits of the Qikiqtani Inuit. Guided by the Nunavut Agreement, QIA promotes Inuit environmental values, Inuit self-sufficiency, and Inuit economic, social and cultural well-being. Advancing clean energy projects in partnership with the communities aligns with our mandate and promotes our environmental values, fosters self-sufficiency and advances economic development for Qikiqtani Inuit.

We are very much in support of the initiative in Sanikiluaq to advance a high displacement wind energy project. We look forward to seeing this project advance as it will be the first large clean energy project in the Qikiqtani Region. The valuable knowledge gained will be fundamental in advancing similar projects throughout the region. We support the regional-community ownership structure between the Nunavut Nukkiqsautiit Corporation and the Hamlet of Sanikiluaq. This structure can be a model for other communities in our region as well.

Thank you for your efforts in advancing clean energy in the Qikiqtani Region and we look forward to updates on the progress of this important project in Sanikiluaq.

Sincerely,

Michael Rowan
Senior Administrative Officer

From: [Brown3, Michael \(NRCAN/RNCAN\)](#)
To: [Sheldon Nimchuk](#)
Cc: [MacKinlay, Cheri-Ann \(NRCAN/RNCAN\)](#); [Bennett, Meaghan \(NRCAN/RNCAN\)](#)
Subject: Sanikiluaq High Displacement Renewable Energy (DEM-052)
Date: September 28, 2018 11:52:00 AM
Attachments: [image001.png](#)
[image002.jpg](#)
[oledata.mso](#)

Ottawa, Canada
K1A 0E4

September 28, 2018

Sheldon Nimchuk
PO Box 1228, Iqaluit, NU
X0A 0H0

Dear Sheldon

Subject: Sanikiluaq High Displacement Renewable Energy (DEM-052)

This is a follow-up to the email you received recently notifying you of the selection of your Clean Energy for Rural and Remote Communities (CERRC) project proposal to proceed to the next stage of consideration. I will be working on your file and would like to set out that next stage. Please contact me when you have reviewed this letter and we can arrange a teleconference for a more in-depth discussion of our questions and requirements, as well as to address any initial questions and concerns you may have. I hope to be able to carry out the majority of discussions by teleconference.

Before a final decision can be made on whether funding can be offered for your project, Natural Resources Canada (NRCAN) must complete a due diligence assessment. When the due diligence has been completed, should NRCAN wish to proceed with the project, I will confirm with you the funding offered, its annual profile, and the scope and timeline of project implementation. This will form the basis for consideration of a contribution agreement. A contribution agreement is a legally binding agreement that establishes the obligations of the recipient with regard to, for example, the project's objectives, timelines and expected results, reporting requirements, and the project budget.

Please note that **until a written contribution agreement is signed by both parties (NRCAN and the proponent), no liability and no commitment or obligation exists on the part of NRCAN to make a financial contribution to the proponent. Any costs or expenses incurred or paid by the proponent prior to the execution of a written contribution agreement by both parties are the sole responsibility of the proponent, and no liability exists on the part of NRCAN.**

An essential requirement of the due diligence is for you to provide evidence that the project financing mechanisms that you have proposed will be available. Before signing a contribution agreement NRCAN will require assurance to its satisfaction that this financing arrangement is in place. In addition, an Environmental Assessment under the *Nunavut Planning and Project Assessment Act, 2013* may be required before construction activities can begin.

Time is of the Essence. We must, therefore, agree on reasonable and acceptable deadline(s) for the provision of required information. In this context, NRCan's objective is to respond to questions from you within 5 business days of receiving them. If I am unable to provide an answer within that time period I will advise you of the best estimate of when it will be available.

I look forward to working with you.

Sincerely,

Michael Brown

Science and Technology Advisor, Office of Energy Research and Development
Natural Resources Canada / Government of Canada
Michael.Brown3@canada.ca / Tel: 819-665-5061

From: [Erin Mentink](#)
To: [Erin Mentink](#)
Subject: Fwd: FW: Notification letter: Clean Energy for Rural and Remote Communities Program
Date: May 1, 2022 10:23:46 AM
Attachments: [QBDC Sanikiluaq High Displacement Wind Project May 17.docx](#)
[QBDC Sanikiluaq High Displacement Wind Project SOW.xlsx](#)

----- Forwarded message -----

From: **Erin Mentink** <erin@plusarctic.ca>
Date: Fri, Sep 21, 2018 at 7:28 AM
Subject: FW: Notification letter: Clean Energy for Rural and Remote Communities Program
To: <sanisao@qiniq.com>
Cc: Sheldon Nimchuk - Qikiqtaaluk Corporation <SNimchuk@qcorp.ca>

Good Morning Mike,

I hope this email finds you well. If you'll recall, back in May, QBDC submitted a funding application for a high diesel displacement wind energy project in Sanikiluaq. We just heard back from the program inviting us to move to the next stage of the evaluation process-see notification letter below.

Sheldon asked me to reach out to you to give you this good news and provide you our submission documents. Wondering if you can share this information/documents with your Mayor and hoping we can arrange a call for next week to discuss further.

Is there a day/time that works well for you for a call?

Regards,

Erin

From: Remote Energy / Énergie à Distance (NRCAN/RNCAN) <nrcan.remoteenergy-energieadistance.rncan@canada.ca>
Sent: Wednesday, September 12, 2018 3:45 PM
To: Sheldon Nimchuk <SNimchuk@qcorp.ca>
Subject: Notification letter: Clean Energy for Rural and Remote Communities Program

September 12, 2018

Sheldon Nimchuk

Qikiqtaaluk Business Development Corporation

PO Box 1228

Iqaluit, NU X0A 0H0

Subject: Sanikiluaq High Displacement Renewable Energy

Dear Sheldon Nimchuk,

Natural Resources Canada (NRCan) would like to thank you for submitting your application to the Clean Energy for Rural and Remote Communities (CERRC) program, Demonstration stream.

Under the program's first Call for Proposals, CERRC received 136 applications from across Canada, representing a wide variety of technology and project types. The total funding requested was over \$750 million, resulting in an extremely competitive evaluation process.

We are pleased to inform you that your project, "Sanikiluaq High Displacement Renewable Energy", has advanced to the next phase of the evaluation process and will now proceed to a due diligence assessment. Additional information will be requested as part of this assessment, and it may also include a financial analysis to determine the overall financial viability of the project.

To help ensure that the due diligence assessment is completed in a timely manner, we request that you confirm within two weeks your willingness to proceed with your project. Following your response, we will arrange a time to discuss the additional required information. You will also be invited to attend a due diligence kick-off webinar.

Please note that this letter does not constitute a funding offer. Until a written contribution

agreement is signed by both parties, no commitment or obligation exists on the part of NRCan to make a financial contribution to your proposed project. Any costs or expenses incurred or paid by the applicant in the absence of a signed contribution with NRCan are the sole responsibility of the applicant and no liability exists on the part of NRCan.

In addition, we respectfully ask that you not make any public announcements until we have had a chance to discuss next steps.

Again, thank you for submitting your proposal, and congratulations on advancing to the next phase of the assessment process. Should you have any questions or concerns, and to confirm your willingness to proceed to the next phase of evaluation, please contact the program team at nrcan.remoteenergy-energieadistance.nrcan@canada.ca with the subject <Sanikiluaq High Displacement Renewable Energy>.

Yours Sincerely,

A handwritten signature in dark ink, reading "Cynthia Handler". The signature is written in a cursive, flowing style.

Cynthia Handler

Director, Energy Science and Technology Programs

Office of Energy Research and Development

Innovation and Energy Technology Sector

Natural Resources Canada

580 Booth St., Ottawa ON



Natural Resources
Canada

Ressources naturelles
Canada

9 September 2019

Sheldon Nimchuk
Qikiqtaaluk Business Development Corporation
P.O. Box 1228
Iqaluit, Nunavut, X0A 0H0

Subject: Clean Energy for Rural and Remote Communities Project Proposal CERRC-DEM-052

Dear Sheldon,

I am pleased to inform you that Natural Resources Canada (NRCan) has completed its due diligence review of your proposal entitled 'Sanikiluaq High Displacement Renewable Energy' and it has been conditionally approved for funding in the amount of \$6,513,000, subject to the successful execution of a written contribution agreement (the "Agreement").

Please note that NRCan does not normally accept changes to the provisions of its Standard Agreement Template. However, the department may consider accepting small changes if they are required by laws or regulations that apply to your entity.

The details of the work plan and budget for the project will be as you specified in the proposal submitted under the call for proposals, and as updated in the Due Diligence Budget, submitted during the due diligence process. However, minor changes may be made to the details in the appropriate Contribution Agreement schedules in the agreement, with the agreement of the NRCan project manager.

Please note again that **until a written Agreement is signed by both parties, no commitment or obligation exists on the part of Natural Resources Canada to make any financial contribution to your organization's project.**

Please also note that all information concerning the selection of your project, and any funding level offered should it be accepted, must be kept strictly confidential until further notice from Natural Resources Canada. Failure to respect this condition may jeopardize further consideration of your proposal.

If you wish to proceed, please confirm with the NRCan project manager, Michael Brown, by e-mail at michael.brown3@canada.ca as soon as possible.

Yours sincerely,

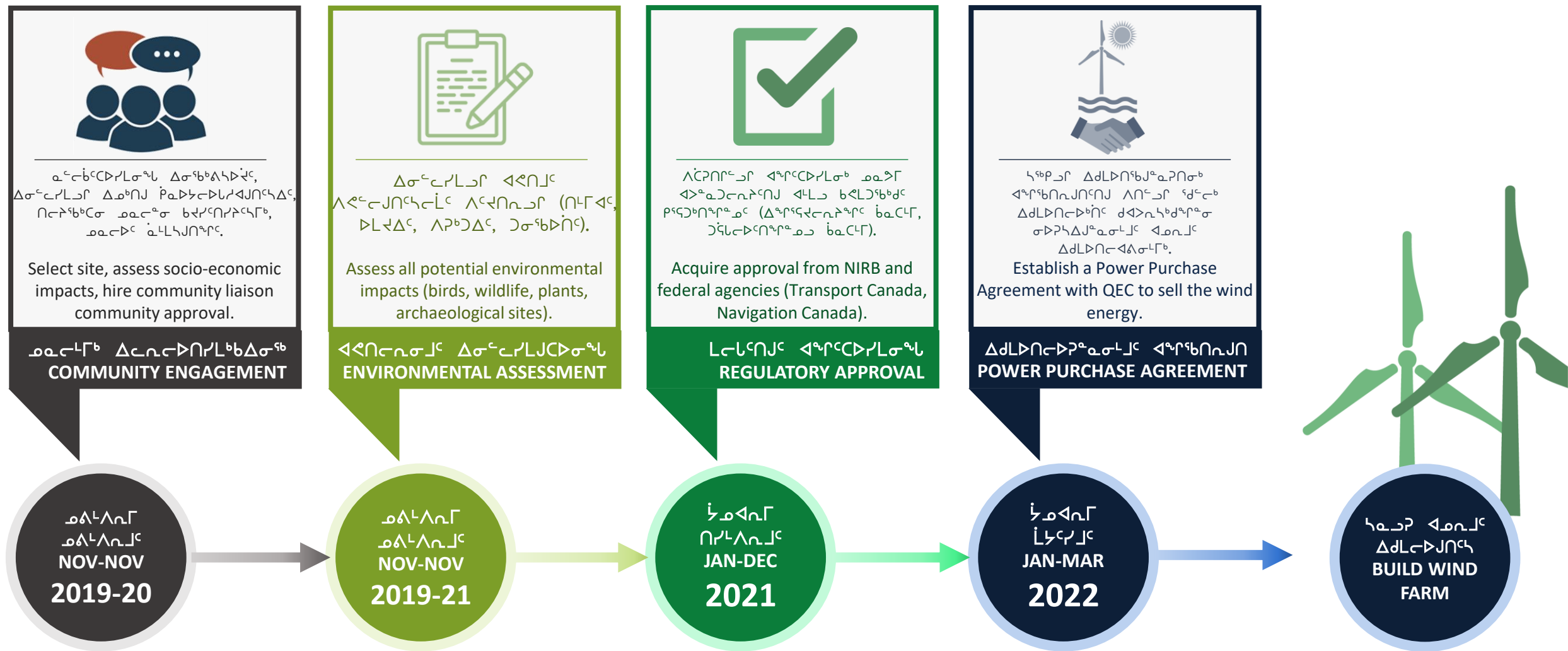
Cynthia Handler
Director | Directrice
Energy End-Use | L'utilisation de L'énergie
Office of Energy R&D | Bureau de R&D énergétiques

Canada

SANIKILUAQ WIND PROJECT



ᑭᓪᓂᐱᐃᐅᐸᐁᐳᐇᐴᐵᐶᐹ | NEXT STEPS



SANIKILUAQ WIND PROJECT



ᑭᓪᓂᐅ ᑕᑦᑕᑦᑭᓴᓴᑦᑭᑦᑭᑦᑭᑦ | WHAT WILL THE WIND FARM LOOK LIKE?



ልደረጉት ልዩነቶች ለሰነድ ልማት
 ልዩ ልዩነቶች

WIND FARM IN ALASKA WITH SIMILAR WIND TURBINES



- ΓΡῺΝ᾵ ἄνδρῃ βΔΔ᾽ ΝC፡J Νῴ -
100 Ρ፡J Δ᾽ J Ν᾵ ἄJ σ
 - C᾽ C L፡። J σ ἄνδρῃ βΔΔ᾽ ΝC፡J Νῴ σ
 - 75 σ ἱC᾽ σ᾽ C Ρσ᾽ β᾽ σ ΓΡσ᾽ ἂ ἄC
᾽C፡። J σ βΔ᾽ J ΝC᾽ σ 175 J L C ἱC Δ᾽
C Ρσ᾽
 - ἂ ᾽ ᾽ βΔ᾽ ΔdL፡N C ἄJ L ᾽ Δ᾽
ΔdL፡N C ΔL Δσ᾽ ββΔσ᾽ ἄL C
ἄJ C፡። ᾽ ᾽ ἄJ βΔ᾽ ἂ ἄJ
ἄJ βΔΓ᾽ (ἄνδρ᾽ βJ ᾽ Δ᾽
ΔdL፡N ᾽ C Δ᾽ ΔdL᾽ βΔJ ᾽ ἄJ)
- Small-scale wind turbines – 100kW each
 - Ten turbines
 - 75 m tall – much smaller than utility scale turbines which are ~175m
 - Battery energy storage component – this will make the system more reliable (when there is no wind, there is still energy in the batteries)

SANIKILUAQ WIND PROJECT



ΔC▷^{qb}bΔσ^{qb} ◁L⊂ Δ^q∩^q∇∩^qσ^{qb} | **INSTALLATION AND OPERATION**



WIND FARM IN ALASKA WITH SIMILAR WIND
TURBINES



- [illegible]



ᑭᑭᑭᑭᑕᑕᑕᑕ ᐱᓚᓚᓚᓚᓚᓚᓚ ᐃᓚᓚᓚᓚᓚᓚᓚᓚᓚ ᓄᐃᐃᓚᓚ

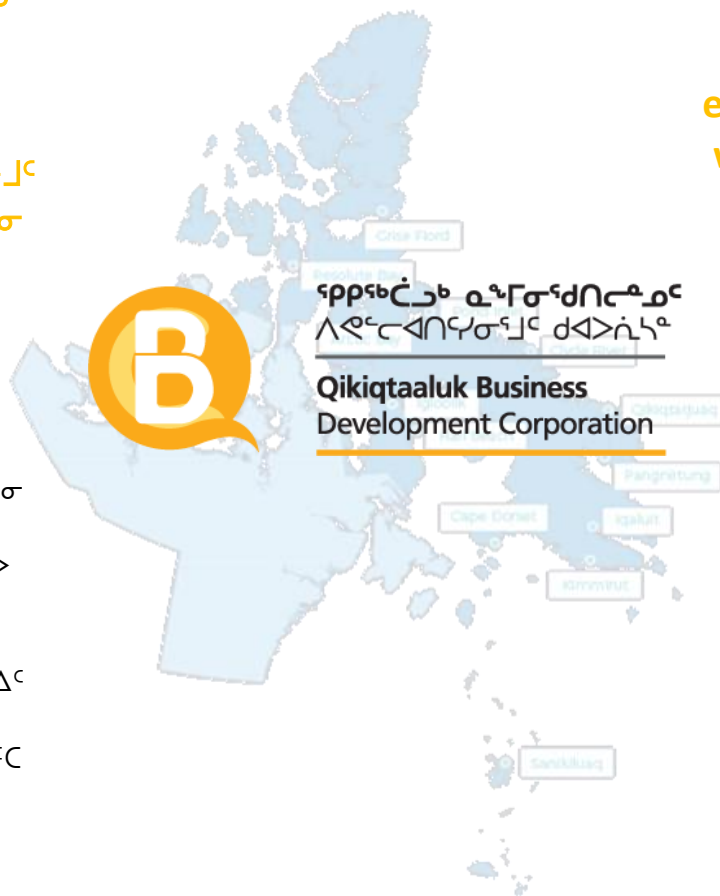
QIKIQTAALUK BUSINESS DEVELOPMENT CORP

Pᄇᅃᆫᆯᆮᆺᆸᆡᆻ | WHO WE ARE

[illegible][illegible]

Qikiqtaaluk Business Development Corporation (QBDC) is a 100% Inuit-owned company created to foster economic development opportunities within the Qikiqtani Region. QBDC is wholly owned by Qikiqtaaluk Corporation.

QBDC's mandate is to foster community capacity and self-reliance in the thirteen Qikiqtani communities. QBDC does this through strategic partnerships, innovation and investments that address the essential infrastructure deficit and enhance local Inuit business and individual career development.



ᓄᓇᓂᓯ ᓄᐅᓴᓂᓯ ᓄᓇᓂᓯ

NUNAVUT NUKKIKSAUTIIT CORPORATION



ᓇᓇᓂᓯ ᓄᐅᓴᓂᓯ | WHO WE ARE

ᓄᓇᓂᓯ ᓄᐅᓴᓂᓯ ᓄᓇᓂᓯ 100 ᓂᓴᓄᓯ
ᓇᓇᓂᓯᓂᓯ ᓄᓇᓂᓯᓂᓯ ᓇᓇᓂᓯᓂᓯ
ᓄᓇᓂᓯᓂᓯ ᓄᓇᓂᓯᓂᓯ ᓄᓇᓂᓯᓂᓯ
ᓄᓇᓂᓯᓂᓯ ᓄᓇᓂᓯᓂᓯ ᓄᓇᓂᓯᓂᓯ

ᓄᓇᓂᓯ ᓄᐅᓴᓂᓯ ᓄᓇᓂᓯ ᓄᓇᓂᓯ
ᓄᓇᓂᓯᓂᓯ ᓄᓇᓂᓯᓂᓯ ᓄᓇᓂᓯᓂᓯ
ᓄᓇᓂᓯᓂᓯ ᓄᓇᓂᓯᓂᓯ ᓄᓇᓂᓯᓂᓯ
ᓄᓇᓂᓯᓂᓯ ᓄᓇᓂᓯᓂᓯ ᓄᓇᓂᓯᓂᓯ

ᓄᓇᓂᓯ ᓄᐅᓴᓂᓯ ᓄᓇᓂᓯ ᓄᓇᓂᓯ
ᓄᓇᓂᓯᓂᓯ ᓄᓇᓂᓯᓂᓯ ᓄᓇᓂᓯᓂᓯ
ᓄᓇᓂᓯᓂᓯ ᓄᓇᓂᓯᓂᓯ ᓄᓇᓂᓯᓂᓯ
ᓄᓇᓂᓯᓂᓯ ᓄᓇᓂᓯᓂᓯ ᓄᓇᓂᓯᓂᓯ
ᓄᓇᓂᓯᓂᓯ ᓄᓇᓂᓯᓂᓯ ᓄᓇᓂᓯᓂᓯ
ᓄᓇᓂᓯᓂᓯ ᓄᓇᓂᓯᓂᓯ ᓄᓇᓂᓯᓂᓯ
ᓄᓇᓂᓯᓂᓯ ᓄᓇᓂᓯᓂᓯ ᓄᓇᓂᓯᓂᓯ

Nunavut Nukkiksautiit Corporation (NNC)
is a 100% Inuit-owned clean energy
developer. NNC is wholly owned by the
Qikiqtaaluk Corporation.

At the core of NNC's business model
is promoting community ownership
of renewable power to maximize
local benefits and facilitate Inuit
self-reliance.

Through shared ownership in
renewable energy production
between the community and NNC,
renewable energy projects can
become a reality. Shared ownership
enables communities to be the
project driver and will ease project
financing bringing local economic
and social benefits.





NNC will provide on-going support to the community to ensure the project is successfully delivered and operated.





Mr. Sheldon Nimchuk
Director
Qikiqtaaluk Business Development Corporation
P.O. Box 1228
Iqaluit, NU X0A 0H0

October 14, 2020

RE: Letter of Support - Sanikiluaq Wind Energy Project

Dear Mr. Nimchuk,


Thank you for the update provided to the Mayor and Council of the Hamlet of Sanikiluaq dated August 6, 2020.

We are pleased to hear the Sanikiluaq Wind Energy Project is progressing well and is actively under development. Renewable energy has great potential to offer important economic, social, and environmental benefits to communities across Nunavut. Beyond the clear environmental and health benefits derived from a reduction in localized burning of diesel fuel for electricity, renewable energy development offers various economic benefits to communities as well including job creation and revenue directly shared with the Hamlet.

With Qikiqtaaluk Business Development Corporation ("QBDC") and Nunavut Nukkiqsautiit Corporation ("NNC"), both of whom are subsidiaries of Qikiqtaaluk Corporation ("QC"), continuing to advance the Sanikiluaq Wind Energy Project, we are encouraged by the significant potential benefits that would be felt within the Hamlet and the prioritization of regional-community ownership, increased Inuit employment, and reduced reliance on diesel fuel.

As such, we are pleased to support QBDC and NNC in principle for this project and look forward to initiating the dialogue on equitable revenue sharing of the wind energy project so as to ensure the Hamlet of Sanikiluaq benefits directly from this community renewable energy infrastructure.

Sincerely,


Mayor Johnnie Cookie
Municipality of Sanikiluaq
General Delivery
Sanikiluaq, NU X0A 0W0

CC: Heather Shilton – Manager of Clean Energy Development, Nunavut Nukkiqsautiit Corporation

Mr. Sheldon Nimchuk
Director
Qikiqtaaluk Business Development Corporation
P.O. Box 1228
Iqaluit, NU X0A 0H0

October 14, 2020

RE: Letter of Support – QBDC Outreach to CGS to Identify Potential Synergies in Community Infrastructure Development in Sanikiluaq

Dear Mr. Nimchuk,

Thank you for letter provided to the Mayor and Council of the Hamlet of Sanikiluaq dated August 6, 2020. With the ongoing and active development of the Sanikiluaq Wind Energy Project, we look forward to working with Qikiqtaaluk Business Development Corporation (“QBDC”) and Nunavut Nukkiqsautiit Corporation (“NNC”) to ensure the Hamlet receives the maximum benefit from this renewable energy development project.

In order to best maximize development potential within the community, and recognizing that Community and Government Services (“CGS”) within the Government of Nunavut (“GN”) is responsible for the delivery of community infrastructure projects, we believe it would be beneficial to initiate a dialogue with CGS to identify any potential synergies in future development within the Hamlet. As well, we would like to explore the potential for the Hamlet of Sanikiluaq to utilize a portion of the Arctic Energy Fund (“AEF”), which is administered jointly by CGS and Infrastructure Canada. As the AEF was established to “support the transfer, in whole or in part, from fossil fuel-based systems to renewables”, it may prove to be a viable avenue for Hamlets in Nunavut to directly benefit from federal funding to support the clean energy transition and reduce Nunavut’s reliance on diesel fuel at the community level (Canada-Nunavut Integrated Bilateral Agreement for the Investing in Canada Infrastructure Program).

As such, we are pleased to support QBDC and NNC in engaging with CGS on behalf of the Hamlet to determine potential synergies on community infrastructure planned for the Hamlet of Sanikiluaq in addition to identification of potential use of the Arctic Energy Fund for renewable energy development in the Hamlet. We look forward to remaining informed throughout this outreach and engagement process.

Sincerely,


Mayor Johnnie Cookie
Municipality of Sanikiluaq
General Delivery
Sanikiluaq, NU X0A 0W0

CC: Heather Shilton – Manager of Clean Energy Development, Nunavut Nukkiqsautiit Corporation



April 13, 2021

NEWS RELEASE

For Immediate Release

Qikiqtaaluk Business Development Corporation Receives \$6.5M from Natural Resources Canada to Support Wind Energy Development in Sanikiluaq

IQALUIT, NU – Qikiqtaaluk Business Development Corporation (“QBDC”) is pleased to announce it has been awarded \$6.5M from Natural Resources Canada (“NRCan”) to support QBDC’s wind and battery energy storage project in Sanikiluaq, NU.

The Sanikiluaq High Displacement Renewable Energy Demonstration Project (“Project”) will see 1 MW of wind generation coupled with 800 kWh of battery energy storage installed in the Hamlet of Sanikiluaq. Producing over 4 GWh per year of clean electricity, it is anticipated that the Project will offset over 50% of the community’s diesel fuel usage for electricity.

“The Sanikiluaq High Displacement Renewable Energy Demonstration project is guided by the principles of Inuit Qaujimajatuqangit, innovative technology solutions, and sustainable development,” said Mr. Harry Flaherty, President and CEO of Qikiqtaaluk Corporation and Group of Companies. “Qikiqtaaluk Business Development Corporation is pleased to receive this \$6.5M investment from Natural Resources Canada to advance Nunavut’s clean energy transition and generate local environmental, social, and economic benefits in collaboration with the Hamlet of Sanikiluaq.”

The Project will be owned and operated through a regional-community ownership model, ensuring project revenues remain within the community. Representing a true Inuit-led solution to renewable energy development in Nunavut, the Project will realize numerous economic, social, and environmental benefits locally.

“The Hamlet of Sanikiluaq is pleased to be working in collaboration with Qikiqtaaluk Business Development Corporation on the Sanikiluaq High Displacement Renewable Energy Demonstration Project,” said Mr. Johnnie Cookie, Mayor of the Hamlet of Sanikiluaq. “This project will boost local economic development and will enhance energy security for the Hamlet. We look forward to seeing the success of this innovative project which will significantly reduce greenhouse gas emissions in our community.”

P.O. Box 1228, Iqaluit, NU X0A 0H0
Phone: (867) 979-8405 Fax: (867) 979-8433



“The support we are providing for this clean energy project demonstrates our commitment to working together in collaboration with Indigenous and territorial partners in Nunavut to tackle climate change, transition to clean energy and create greater economic opportunity in the territory,” said the Honourable Daniel Vandal, Minister of Northern Affairs. “This initiative will help create a cleaner, healthier and more prosperous future for Nunavummiut and all Canadians.”

QBDC thanks NRCan for their valuable financial contribution to this innovative Project, which will see the realization of crucial community infrastructure in Sanikiluaq. In bringing clean, reliable energy to Sanikiluaq, this Project will prove the viability of high displacement renewable energy projects in the North.

###

ABOUT QBDC: [Qikiqtaaluk Business Development Corporation \(QBDC\)](#) was created to stimulate local and regional economic development opportunities. We work to build prosperous, more self-sufficient communities; we cultivate strategic partnerships in order to build essential infrastructure, we advance new and innovative solutions to enhance economic development, and we leverage third party investments to support communities in advancing their visions.

Media Contact for QBDC:

Heather Shilton
Director
Nunavut Nukkiqsautiit Corporation
867-979-8400
hshilton@qcorp.ca

ABOUT NRCan: [Natural Resources Canada \(NRCan\)](#) develops policies and programs that enhance the contribution of the natural resources sector to the economy, improve the quality of life for all Canadians and conduct innovative science in facilities across Canada to generate ideas and transfer technologies. NRCan also represents Canada at the international level to meet the country's global commitments related to the sustainable development of natural resources.

Media Contact for NRCan:

Natural Resources Canada
Media Relations



ᑭᑭᑭᑭᑭᑭᑭ ᑭᑭᑭᑭᑭᑭᑭᑭᑭ
ᑭᑭᑭᑭᑭᑭᑭᑭᑭᑭᑭᑭᑭᑭᑭᑭ

Qikiqtaaluk Business
Development Corporation



Natural Resources
Canada

Ressources naturelles
Canada

Canada

343-292-6100

nrcan.media.rncan@canada.ca

Ian Cameron

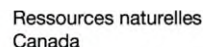
Press Secretary

Office of the Minister of Natural Resources

613-447-3488

ian.cameron@canada.ca

P.O. Box 1228, Iqaluit, NU X0A 0H0
Phone: (867) 979-8405 Fax: (867) 979-8433

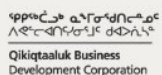


G-85

የሥራ ምርት ምርመራ ሪፖርት
ለፍትህ ሚኒስቴር ሪፖርት
\$6.5 ሺህ ለፍትህ ሚኒስቴር ሪፖርት
በፍትህ ሚኒስቴር ሪፖርት
ፍትህ ሚኒስቴር ሪፖርት
ፍትህ ሚኒስቴር ሪፖርት
ፍትህ ሚኒስቴር ሪፖርት



Qikiqtaaluk Business Development Corporation has been awarded \$6.5M from Natural Resources Canada to support the demonstration of a high diesel displacement wind and battery energy storage project in Sanikiluaq, NU.





ᓄᓇᑭᓂ ᓄᓅᓱᓴᑭᑦ ᓄᓴᑭᓴᓴᓴ



ᓄᓇᑭᓂ ᓄᓅᓱᓴᑭᑦ ᓄᓴᑭᓴᓴᓴ

Nunavut Nukkiqsautiit Corporation

ᓴᓂᓱᓴᓴᓴ ᓴᓄᓴᓴᓴ ᓴᓴᓴᓴ ᓴᓄᓴᓴᓴᓴᓴᓴᓴᓴ ᓴᓄᓴᓴᓴᓴᓴᓴᓴᓴ ᓴᓴᓴᓴᓴᓴᓴᓴᓴᓴ
ᓄᓇᓴᓴ, ᓴᓴᓴᓴᓴᓴ, ᓴᓄᓴᓴᓴᓴᓴᓴᓴᓴᓴᓴ

Sanikiluaq Wind And Battery Energy Storage Project

Your Land, Your Resources, Your Power



PoʻdΛC

WHO WE ARE

$\rho^a \sigma^b \Delta \sigma^c \rho^c \sigma^d \sigma^e$

LEADING DEVELOPMENT

$$\begin{array}{c} \text{ppc} \rightarrow \text{L} \quad \wedge^{\text{c}} \text{c} \rightarrow \text{d} \sigma^{\text{L}} \text{J}^{\text{c}} \quad \Delta \sigma^{\text{b}} \text{C} \rightarrow \text{c} \rightarrow \text{d} \text{L} \sigma^{\text{c}} \\ \text{d} \Delta \text{d} \text{b}^{\text{c}} \text{b}^{\text{c}} \end{array}$$


የዋናው ምርጫ ምክር ቤቅ
ለፍርድ ቤቱ ማረጋገጫ

**Qikiqtaaluk Business
Development Corporation**

[illegible]

Nunavut Nukkiqsautiit Corporation

PROJECT CONTRIBUTORS



c^ah^bz^a ΔJL▷ñ^c

Landsvirkjun
Power


$${}^{\circ}\mathbf{b}^{\circ}\mathbf{c}^{\circ}\mathbf{J}^{\circ}\mathbf{\sigma}^{\circ}\mathbf{J}^{\circ}\Delta\mathbf{d}\mathbf{L}\mathbf{\triangleright}\mathbf{\dot{H}}^{\circ}$$

Growler
Energy

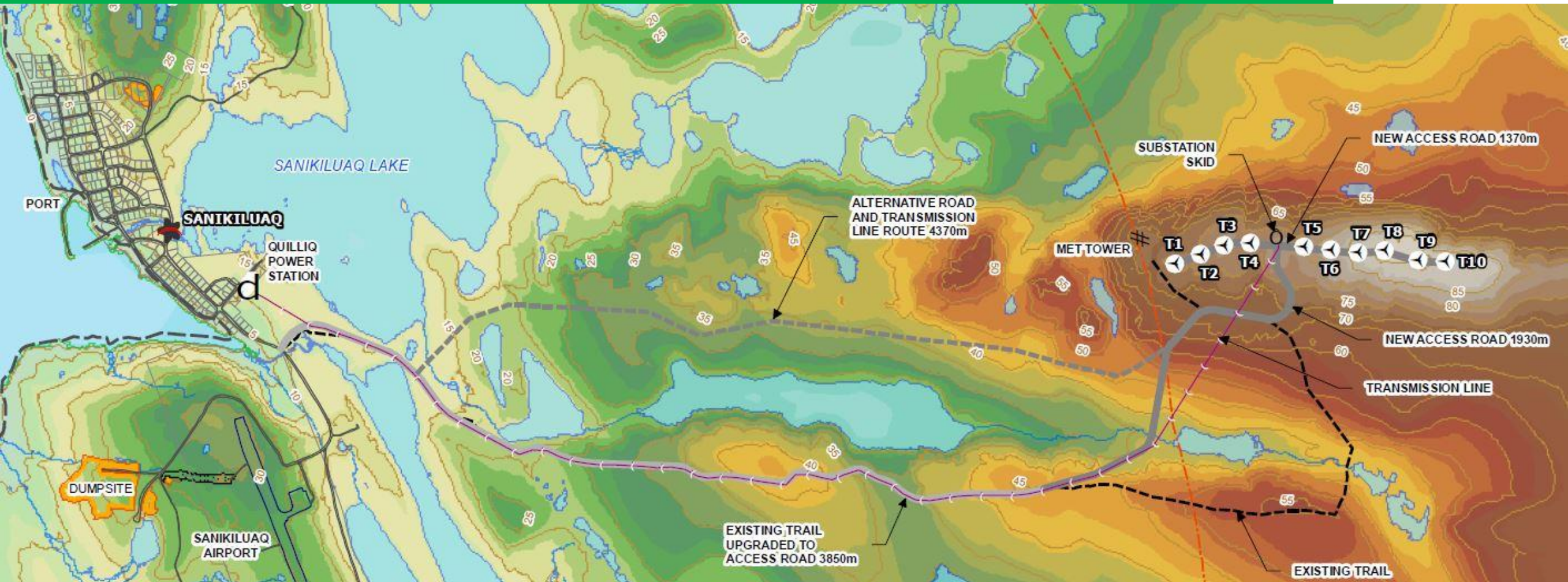

$$b \perp C^L \Gamma \quad \wedge \varphi^c \subset \Delta \sigma^L \sqcup^c \quad \triangleright \sigma^b \subset \Delta \dot{c}^c$$

CANADIAN
PROJECTS
LIMITED



ጌረገሳ ልዕሊጋብረኤሉጋር
ለጎረጎረ

Frobisher Energy Services²





[illegible]

- [illegible]

Wind Turbines + Battery Energy Storage System (BESS)

- The current estimation for capacity is 1,000 kW of wind + 500 kWh of BESS





▷^b∩∩
OCTOBER
2021

▷^b∩∩
OCTOBER
2021

▷^b▷Λη
OCTOBER
2021

▷^b∩Λ_n
OCTOBER
2021



Q4 2022

Q3
2023

Q4 2023

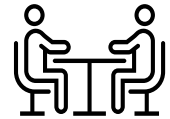
ᓄᓇᓕᓐᓂ ᓂᓂᓂᓐᓂᓐᓂᓐᓂᓐ

Community Outcomes



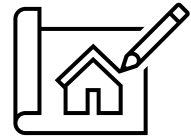
- ᐃᓕᓂᓐᓂ ᐃᓂᓂᓐᓂᓐᓂᓐᓂᓐ
- ᓂᓂᓂᓐᓂ ᓂᓂᓂᓐᓂᓐᓂᓐᓂᓐ
 - ᐃᓂᓂᓐᓂ ᓂᓂᓂᓐᓂᓐᓂᓐᓂᓐ

- Environmental Impacts
- Avian surveys
 - Turbine mitigation factors



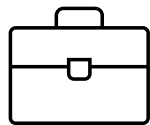
ᐃᓂᓂᓐᓂ ᐃᓂᓂᓐᓂᓐᓂᓐᓂᓐ ᓂᓂᓂᓐᓂᓐᓂᓐᓂᓐ
ᐃᓂᓂᓐᓂᓐᓂᓐᓂᓐᓂᓐ ᐃᓂᓂᓐᓂᓐᓂᓐᓂᓐᓂᓐ

Opportunity for partnership
between Hamlet and Project
Collaborators



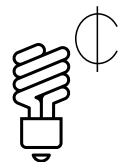
ᐃᓂᓂᓐᓂᓐᓂᓐᓂᓐᓂᓐ ᓂᓂᓂᓐᓂᓐᓂᓐᓂᓐ
ᐃᓂᓂᓐᓂᓐᓂᓐᓂᓐᓂᓐ

Upgrades to existing
infrastructure



- ᐃᓂᓂᓐᓂᓐᓂᓐᓂᓐᓂᓐ ᓂᓂᓂᓐᓂᓐᓂᓐᓂᓐᓂᓐ
- ᓄᓇᓕᓐᓂ ᓂᓂᓂᓐᓂᓐᓂᓐᓂᓐ ᐃᓂᓂᓐᓂᓐᓂᓐᓂᓐ
 - ᐃᓂᓂᓐᓂᓐᓂᓐᓂᓐᓂᓐᓂᓐ ᐃᓂᓂᓐᓂᓐᓂᓐᓂᓐᓂᓐ
 - ᓄᓇᓕᓐᓂᓐᓂᓐᓂᓐᓂᓐᓂᓐᓂᓐ ᐃᓂᓂᓐᓂᓐᓂᓐᓂᓐᓂᓐ
 - ᐃᓂᓂᓐᓂᓐᓂᓐᓂᓐᓂᓐᓂᓐ ᐃᓂᓂᓐᓂᓐᓂᓐᓂᓐᓂᓐ

- Job Creation
- Local contractors and laborers for development and construction
 - Local folks for operations and maintenance
 - Training opportunities



ᓄᓇᓕᓐᓂᓐᓂᓐᓂᓐᓂᓐᓂᓐ ᐃᓂᓂᓐᓂᓐᓂᓐᓂᓐᓂᓐ
ᐃᓂᓂᓐᓂᓐᓂᓐᓂᓐᓂᓐᓂᓐ

Competitive Levelized Cost of
Energy

ካሽታልኒክ ልብሊክ ለድርረታዎች SANIKILUAQ WIND PROJECT

ወደብ ልብሊክ ልብሊክ



867.979.8400



hshilton@qcorp.ca

የዋና ልብሊክ ልብሊክ ልብሊክ ልብሊክ



የዋና ልብሊክ ልብሊክ ልብሊክ ልብሊክ

**Qikiqtaaluk Business
Development Corporation**



867.979.8405



snimchuk@qcorp.ca



Sanikiluaq Wind Project

Site Visit Report

Document Name:	Sanikiluaq Wind Project Site Visit Report (October 14, 2021)
Document Number:	SAN-PDG-RP-002

20-Oct-2021	0	Issued for Use	CWH	PWH	EJ
16-Oct-2021	A	Issued for Review	CWH	PWH	EJ
Date	Revision	Issued For:	Prepared By:	Checked By:	Approved By:



Table of Contents

Table of Contents	i
1.0 Introduction	1
1.1 Background	1
1.2 Purpose.....	2
1.3 Activities	2
2.0 Meeting with Hamlet Council	2
3.0 Hamlet Tour	3
4.0 Heavy Equipment/Machinery Viewing.....	10
5.0 QEC Plant Tour	16
6.0 Wind Site Visit	19
7.0 Conclusions & Key Findings	22
Appendix A – Bilingual Project Overview Presentation	23

1.0 Introduction

1.1 Background

The Sanikiluaq Wind + Battery Energy Storage System (BESS) Project is a planned renewable energy development to displace fossil fuel energy generation for the Hamlet of Sanikiluaq in the Qikiqtani region of Nunavut. On October 14, 2021, the project team visited Sanikiluaq to observe the project site, meet with the Hamlet council, and gather information from local community members as it may pertain to the future construction of the project.

The team members that visited the hamlet are:

1. Heather Shilton, Nunavut Nukkiqsautiit Corporation (NNC)
2. Einar Magnús Júlíusson, Landsvirkjun Power (LVP)
3. Peter Whelan, Growler Energy
4. Stephanie Adey, Growler Energy
5. Curtis Whelan, Growler Energy

The team departed Iqaluit onboard on Air Nunavut King Air charter (Figure 1) at approximately 5:30 AM EST and arrived in Sanikiluaq at approximately 8:00 AM EST. The team departed Sanikiluaq at approximately 2:45 PM EST. The team was split amongst the varying activities to facilitate the completion of all planned activities in parallel throughout the day.



Figure 1: King Air Charter Flight

The weather in Sanikiluaq during the site visit was sunny with temperatures between four and eight degrees, Celsius. The wind at the site was approximately 30 km/h gusting to 50 km/h.

1.2 Purpose

The purpose of this site visit report is to act as a record of and summarize the activities, findings, and insights gathered by the project team during the October 14, 2021, visit to Sanikiluaq.

1.3 Activities

The key activities completed during the visit to Sanikiluaq are:

1. Meeting with Hamlet Council
2. Hamlet Tour
3. Heavy Equipment/Machinery Viewing
4. Qulliq Energy Corporation Plant Tour & Operator Discussion
5. Visit to Proposed Project Site

Key information and photographic records of the above activities are discussed in the Section 2.0 through Section 6.0 .

2.0 Meeting with Hamlet Council

The Municipality of Sanikiluaq's council meeting took place at the temporary Hamlet office on Thursday, October 14, 2021, at 9:00AM Eastern Standard Time. The purpose of meeting with the council was to provide an update to the council members on the progress of the project. This included an overview of the completed, ongoing, and upcoming tasks ranging from the installation of the MET tower through to first power. The presentation slides used for the meeting can be found in Appendix A. Meeting attendees from both the council and the Project Team are summarized in Table 1.

Council	Project Team
Mayor Johnnie Cookie	Heather Shilton – NNC
Senior Administrative Officer (SAO) Ronald Ladd	Einar Júlíusson – LVP
Deputy Mayor – Emily Kattuq	Stephanie Adey – Growler Energy
Councillor Dinah Kittosuk	
Councillor Mick Appaqaq	
Councillor Lucy Appaqaq	
Councillor Moses Appaqaq	
HOLD	

Table 1: Sanikiluaq Council Meeting Attendees

The presentation went very well, and the key outcomes of the meeting are:

- In general, the council was very engaged in the presentation and are very thankful and supportive of the project. They recognize they are a smaller community within the

territory of Nunavut, but they want, and know they can be, among the first for community-level wind development.

- If gravel is to be produced and procured within the community during the execution phase of the project, the SAO will require a minimum of 6 months' notice. It is important for the Project Team to clarify what amount of gravel must be produced given the lead time to ensure appropriate planning and adequate notice is given to the community, if needed.
- The council demonstrated an interest in and were keen to learn more about the ownership and revenue sharing opportunities of the project. As a result, a Community Liaison is planned to be hired within Sanikiluaq to help facilitate our progress in understanding what these opportunities look like.

The council was asked for recommendations on any individuals who may be well suited as a Community Liaison for the project and other ongoing NNC initiatives. It was clarified that the individuals do not require education, but rather strong community knowledge and good connections. When the Project Team is ready, they can send the SAO a copy of the job description(s), and the SAO will distribute to community members.

- When the site location was discussed, the council clarified the location was on the far side of the MET tower (in comparison to the community) and agreed that this is the best location for the turbines as it is not within prime hunting grounds. An upgraded access road to that area would benefit berry pickers and hunters as they venture further onto the land.

3.0 Hamlet Tour

While some members of the team met with the Hamlet council, other members were taken on a vehicle tour of the hamlet, guided by the former Sanikiluaq Member of Legislative Assembly, Allan Rumbolt. Some key observations from the hamlet tour are:

- The hotel is being repaired following the recent storm damage. Information from the guide indicates that when reopened, the hotel will have more rooms than the original hotel and a dining area/restaurant.



Figure 2: Co-Op Hotel Sanikiluaq

- There are two temporary work camps in the community for the time being. They are being used for the ongoing construction activities relating to the health centre and the new housing association office.
- There is a new health centre in the community that is large in comparison to the population. It was based on the design for the new Kinngait Health Centre. The facility is well equipped to provide emergency medical care to the project with the option for medevac for more serious incidents.



Figure 3: Sanikiluaq Health Centre

- Roads in the hamlet are in relatively poor condition and would benefit considerably from additional gravel and grading. This is particularly evident in the road from the airport to the community.
- There is a sizable Co-op grocery store for food/amenities. The team did not enter the store this visit however a team member was in the store in October 2020 and confirmed it is fully-stocked.
- The hamlet avails of an open landfill for disposal of all community wastes, including, recyclables, organics, metals, and hazardous wastes. The project will need to consider disposal of wastes (including waste oil) in a more environmentally friendly manner. This could involve removal of the wastes on sealift and disposal in the south.



Figure 4: Hazardous Waste Stored at Landfill

- There is a new Arctic Eider Society building currently under construction. The Hunters and Trappers Organization (HTO) will share in this space. The team held discussions with some of the people working on the construction and discussed some of the equipment that was located at the project site (see Section 4.0). It is planned that this facility will be a net-zero facility and there exist opportunities for the Arctic Eider Society and HTO to collaborate with, and directly benefit from, construction of the wind project.



Figure 5: Arctic Eider Society Building Under Construction

- Information indicates that there is a new hamlet office planned for the community.

- There is a new housing association office being constructed near the QEC plant. The team had introductory discussions with some of the personnel working on the construction. The construction team for this office imported a considerable amount of cement due to the lack of a batch plant in the hamlet. This cement was located near the new building footprint.
- There is a magnetic observatory next to the QEC plant. Information indicates that there is very sensitive equipment contained in the buildings.



Figure 6: Magnetic Observatory Behind the QEC Plant

- Reports from the community and discussions with the guide indicate that vandalism is a major concern in the community. The project will need to be cautious leaving equipment unattended for extended periods of time.



Figure 7: Truck with Windows Vandalized

- The team viewed the sealift landing location. Consensus is that equipment shipped in containers as the only facility is a beach for landing the sealift barge. It is believed that the sealift landing location will be sufficient, however, there is no deep-water port capabilities in the hamlet. The sealift ship takes anchorage approximately one mile offshore according to the guide. This should be validated by the project team.



Figure 8: Sealift Landing Location

- There is a hamlet owned gravel pit/borrow source. It appears that considerable quantities of material are available, but discussions with community personnel indicate that there is

a long lead time for crushed material due to a backlog from ongoing construction projects in the hamlet. Information indicates that class A material costs \$60 per cubic yard.



Figure 9: Hamlet Pit

- There are plans to install a new water treatment facility. Surveying has taken place recently, but there are no indications on timelines or a specific location for the new facility. The current water station was viewed by the project team. Discussions with the guide indicate that there are considerable challenges pertaining to clean water in the community. Encouraging information from a Government of Nunavut employee indicates that there are reverse osmosis units installed in every house in the hamlet. It is therefore assumed that the potable water in the hamlet is sufficient for housing employees during construction. Any future water treatment facilities constructed in the community will benefit the wind/BESS project through load growth and potential for additional renewable energy generation.



Figure 10: Existing Water Treatment Facility

- Anecdotal information from the guide indicates that the proposed project location is the optimal location within the hamlet. All indications are that any other project locations would be susceptible to potential vandalism and friction within the community. The existing trail to the proposed wind site is often used for berry picking and access to hunting/fishing but is not the primary location for these activities. Upgrades to the road/trail would likely be a welcomed addition within the community.

4.0 Heavy Equipment/Machinery Viewing

As part of the hamlet tour, the project team was able to view all heavy equipment and machinery available in the community, both functional and non-functional. There are multiple companies in ownership of the equipment as well as the hamlet. Owners of some of the local equipment indicated a willingness to work with project team to acquire any additional required equipment. The owners expressed this as an opportunity to acquire new infrastructure to provide reliable service to the hamlet in the future. The equipment identified during the hamlet tour is:

- A 966 CAT Loader owned by Gary Rumbolt.



Figure 11: 966 CAT Loader

- 2001 International Dump Truck owned by Gary Rumbolt. Discussions with Allan Rumbolt indicate that the truck currently has transmission that are being investigated and repaired.



Figure 12: 2001 International Dump Truck

- 950 CAT Loader owned by Gary Rumbolt.
- JCB 530 Telehandler owned by Gary Rumbolt.



Figure 13: 950 CAT Loader and JCB 530 Telehandler

- Miscellaneous heavy equipment owned by Kawtaq Construction (majority shareholder is Gary Rumbolt). Stock was not taken of specific model numbers, however, all equipment at Kawtaq yard appears to be non-functional and in need of considerable repairs.



Figure 14: Kawtaq Equipment in Need of Repairs

- 320c CAT Excavator owned by another construction company operating in the hamlet (name unknown).

- Roller owned by another construction company operating in the hamlet (model number and company name unknown).



Figure 15: 320c CAT Excavator and Roller (model unknown)

- Crane (unknown model number) owned by another construction company operating in the hamlet. Information indicates that crane may be operational but is not road worthy and appears to be in poor condition. Certification status is unknown, but it is unlikely that the crane meets the required certifications for lifting devices. Team will not use uncertified equipment for construction.



Figure 16: Crane Owned by Other Construction Company

- Dump truck owned by hamlet and in process of being purchased by Gary Rumbolt. Information indicates that paperwork for dump truck is not in order. Dump truck was vandalized and does not have any windows currently (Figure 7).
- 330 CAT Excavator owned by Hamlet of Sanikiluaq.
- 950 CAT Loader owned by Hamlet of Sanikiluaq.
- Crusher owned by Hamlet of Sanikiluaq.



Figure 17: 330 Excavator, 950 Loader, and Crusher Owned by Hamlet of Sanikiluaq

- Drill owned by Canadrill.



Figure 18: Canadrill Drill

- 4026 Manulift Telehandler owner unknown, but Allan Rumbolt expressed interest in purchasing from the current owner instead of a resale to the Montreal-based dealer.



Figure 19: Manulift 4026 Telehandler

- CAT D6 Dozer owned by Hamlet of Sanikiluaq. Information indicates that the rental rate for the dozer is \$300/hr.



Figure 20: CAT D6 Dozer Owned by Hamlet of Sanikiluaq

5.0 QEC Plant Tour

During the visit, the project team had an opportunity to visit the QEC plant and were able to enter the QEC yard, view the diesel generators, view the switchgear room, and view the ongoing installation of the new district heating system.

The major takeaways from the discussion with the QEC plant operator and the QEC facility viewing are:

- There are some required changes to the current drawings because of impediments within the QEC yard. The project team feels it would be in the project's best interest for project-specific equipment to be installed beyond the boundaries of the current QEC yard.
- There is limited space for expansion within the current QEC facility. The project will need to collaborate closely with QEC for the installation of any equipment that needs to be installed in the facility.
- The Sanikiluaq district heating system was installed in the plant this past summer (2021).
- There will be transformer upgrades to the facility soon. There is a temporary 1,200 kW diesel generator in a trailer in the QEC yard to provide power to the hamlet during the upgrades.



Figure 21: Rear of QEC Plant



Figure 22: Miscellaneous Items in QEC Yard



Figure 23: New Storage Containers in QEC Yard



Figure 24: QEC Yard (North Side Looking West)



Figure 25: QEC Plant (View from Mezzanine)



Figure 26: QEC Plant Switchgear/Controls Room

6.0 Wind Site Visit

Following the QEC Plant tour, the team sourced ATVs and a guide, Johnassie Ippak, through Allan Rumbolt for traversing the existing trail to the wind site. All five team members participated in the site visit along with both Johnassie and Allan. The route taken by the team is shown in Figure 27.

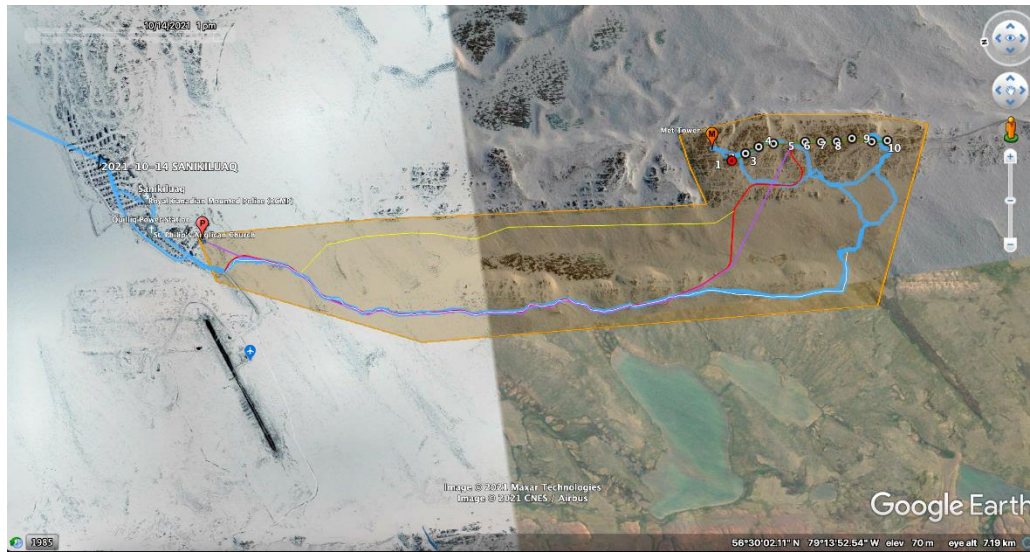


Figure 27: Sanikiluaq Site Visit Route

Some of the key observations from this visit are:

- The existing trail is rough, and it appears that there is limited use of the trail. Rocky sections were slow to traverse but should provide a solid foundation for road construction.
- Soft sections of the existing trail were difficult to cross, with no clear trail across some areas. Allan noted that areas around town that look OK to drive over, have seen large equipment sink and get stuck, requiring an excavator to retrieve. He mentioned that test drills went 12 m deep before reaching solid ground. It should be assumed that the soft sections along the trail may require more fill and an engineered solution like geotextiles between the fill and the existing ground.
- A fill-only road may be more advantageous than balancing cut fill along the route. This should be further assessed for productivity and investigating the price of the fill. Ability for a contractor to use their own equipment to remove material from the pit would be advantageous, rather than tying up the Hamlet's equipment. The pit appeared large enough for multiple operations to work simultaneously.
- The alternate, shorter route to the site was not traversed because of the difficulty in taking ATVs over the wet area near the Hamlet side of the trail. However, it was considered a viable option by Allan, noting that the prevailing wind should enable less snow buildup on the west side of the ridge, as compared to the east side. This route may be more economical depending on how much additional fill is required for soft sections of the existing trail.

- The Rolling rock outcrops along the top of the ridge provide very little flat working areas for wind turbine installation.



Figure 28: Met Tower at Proposed Project Location

- All turbine locations were visited, no insurmountable barriers identified for construction. Additional fill may be required depending on the turbine supplier's requirements for tower erection.

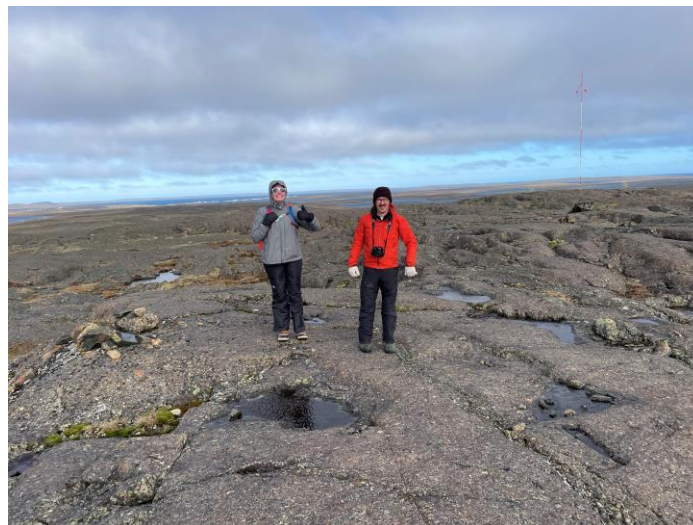


Figure 29: Wind Turbine 1 Proposed Location

7.0 Conclusions & Key Findings

Overall, the site visit was a success with considerable information obtained by the project team. The key findings from the project site visit are:

- There are no showstoppers – the team is confident that the project can be successful in the Hamlet.
- The Hamlet Council meeting was very positive, and the hamlet is supportive of the project and will see the project through to completion with the Project Team.
- Additional heavy equipment will be required for project execution. The equipment in the town is not sufficient to undertake the project without supplementary equipment. The age of the current equipment is of note to the project team and additional downtime/maintenance can be expected if this equipment is used. A valuable contact was established with the equipment owner who indicated a willingness to work with the project team to acquire the necessary equipment.
- The wind turbine foundation location conditions were close to expectations and no additional challenges were identified during the site visit.
- There are one to two wet areas that may present minor challenges requiring additional materials and/or equipment for the access road construction. No major challenges were identified during the site visit.
- Changes are required to the civil layout drawings concerning the QEC plant due to impediments within the QEC yard. The project team feels it would be best to place project-specific equipment beyond the bounds of the current QEC facility.
- Consideration will need to be given to accommodations during construction. It is unlikely that the hotel will meet the accommodation requirements for a construction team.
- Consideration is required for waste disposal (including waste oil). The team feels it is irresponsible to dispose of project wastes in an open landfill. This goes against the overall values of a community-led renewable energy initiative.



Appendix A – Bilingual Project Overview Presentation

We want to hear from you!



Sanikiluaq Wind Energy Project

Share your
Inuit Qaujimajatuqangit (IQ)
and community knowledge

Elders, youth, men, women



Hunters, trappers, guides



Students, teachers



Artists



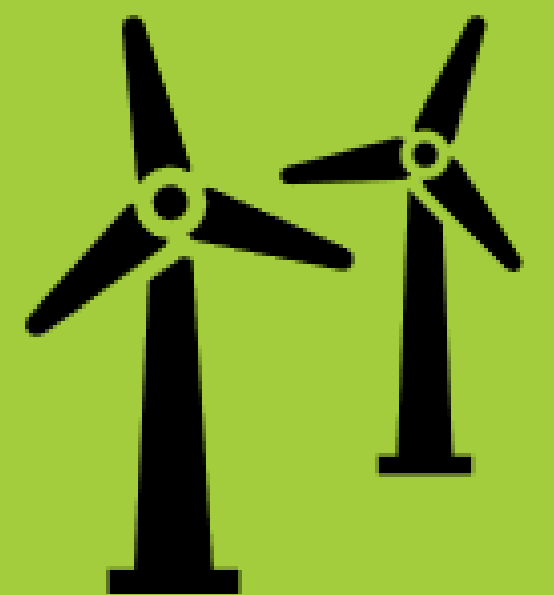
Tell us what the project means to you!

Feb. 21–28

Book a conversation with us

Call or email:

519.803.9507 | sanikiluaqwind@gmail.com





Δ^cΓ^cσ^c⊃^{⁹ᵇ}Λ^{⁹ᵇ}PL^⁹

Δ_ω⁹⁹^c, Δ_ω⁹⁹^cΔ_ω⁹⁹^c, Δ_ω⁹⁹^cΔ_ω⁹⁹^cΔ_ω⁹⁹^c, Δ_ω⁹⁹^cΔ_ω⁹⁹^cΔ_ω⁹⁹^cΔ_ω⁹⁹^c



ከፍተኛ ምርጫ ምክር ቤቱ

$$\Delta dL \ll \Delta \sigma^{\text{sub}} L$$

Λ^o r Δ σ^o L

$$\Delta\sigma^{\text{H}^{\text{b}}\text{D}\sigma^{\text{C}}}, \Delta\sigma^{\text{H}^{\text{b}}\sigma^{\text{C}}}$$

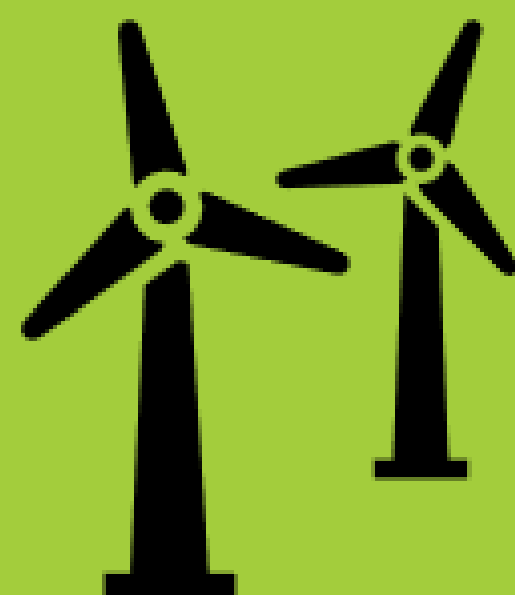

ከዚህ በፊት ለጥያቄዎች ማስፈጸም ሲቀርቡ ለጥያቄዎች ማስፈጸም ሲቀርቡ

[illegible]

Λ>Δ_n 21Γ^c 28J^c

Cd²⁺ JLC⁺ Pb²⁺ JLC⁺

519.803.9507



Radio advertisement (60 second spot = 2 x 90 words):

English

We want to hear from you!

The Sanikiluaq Wind Energy Project is expected to create local jobs, boost the local economy, and deliver affordable, reliable, and clean energy to residents.

Are you a

- hunter, trapper, harvester,
- Elder, youth,
- student, teacher,
- or community leader?

We will be in Sanikiluaq to hear your thoughts on the Sanikiluaq Wind Energy Project between February 23 and 28.

To book a time to share your thoughts on the Sanikiluaq Wind Energy Project, call ###.###.#### or email sanikiluaqwind@gmail.com.

Inuktitut

[We want to hear from you!]

The Sanikiluaq Wind Energy Project is expected to create local jobs, boost the local economy, and deliver affordable, reliable, and clean energy to residents.

Are you a

- hunter, trapper, harvester,
- Elder, youth,
- student, teacher,
- or community leader?

We will be in Sanikiluaq to hear your thoughts on the Sanikiluaq Wind Energy Project between February 23 and 28.

To book a time to share your thoughts on the Sanikiluaq Wind Energy Project, call ###.###.#### or email sanikiluaqwind@gmail.com.]

Meeting with Daniel Qavvik (Current Hudson Bay MLA)
22/02/2022

- Mr. Qavvik elected in Oct, member for Hudson Bay
- Project would benefit the community, provide employment opportunities, and it would be beneficial for the community to see the development
- Diesel is costly, households are paying \$60-140 per month for utilities
 - o Those on income support pay less
 - o This is a high cost for households, paying for housing, groceries, cable, all are expensive
- Diesel heat is used for most households
- Early 2000's powerplant burned down, new one has a backup
 - o Diesel furnaces in households still need reliable electricity
- Fall is very windy, comes mostly from the north, but is changeable
- Current preferred road/transmission is better than the alternative, less snow, higher elevations
- Geese nest along the shores of the lakes west of proposed route, but also along proposed alternative route
 - o Daniel collects ~50 eggs along lakes west of the project, 20-30 along lakes east of the project per year
- Public access with the road is benefit, people want another road
 - o Gives access for hunting and to other trails
- Not too much berry gathering or fishing in the project area
- Salinity is building up in the lake used for drinking water (Sanikiluaq Lake) in the last ten years
 - o People don't want to use the other nearby lake because it is too close to the cemetery, and there is concern about runoff from the sewage lagoon
- River along the proposed road is spawning area for landlocked arctic char
- Lack of employment opportunities in the community
 - o People want to work, but want to stay in the community
- Lack of resources in the community
- Youth and children are affected most by lack of jobs and resources in the community
- Project can be eye opening for Nunavut, can inspire other communities to have wind energy too
 - o Iqaluit would benefit, but would need to build turbines farther out of town
- There is some concern for geese flying through with the Project
- The Project area is a hunting area for people walk to hunt, mostly youth who don't have transportation, maybe 10 youth use that area, although typically along the road
- Noise from the Project might impact nesting, 90% of birds go back to where they are born to nest
 - o There will be nests around the lakes where the turbines are
 - o Geese typically return to an area if disturbed
- Concerns for migratory birds as well, numbers are decreasing
- Ravens, seagulls, and ptarmigans also use the area

- Fox dens in the area as well, between the alternative routes and the lakes to the east
- Before MLA, Daniel worked as conservation officer for 7 years
- Diesel spills with the project could be concern
- Daniel saw ~5 spills per year as conservation officer, ~3 would be larger ones from home tanks and construction spills
-

HTA Meeting

February 22, 2022

Participants:

- Fiona Wirz-Endrys and Devin Waugh (Odonaterra)
 - Stephany Adey (Growler)
 - Full HTA Board:
 - o Eli – Key person on board
 - o Luc
 - o Charlie
 - o Moses
 - o Mic Johnny
 - o Bosy
-
- Stephanie presented about what the Project will look like. Devin provided maps for reference.
 - A question was asked about when the project will start. Stephanie responded that we will hopefully begin next year.
 - Will the money stay in the community?
 - o Stephanie: we want to make sure that the money will stay in the community
 - o We want to add money into the community, but never lose money
 - Mayor had told us about the Project (Heather) – haven't been updated in the last few years
 - Community was not aware of the number of turbines (thought there would be only one – now learning there may be 10)
 - Question about whether there has been a disagreement between power corps (QEC, QBDC and Growler), and who sells the power. Stephanie said that there was no dispute but we still need to determine how the partnership will go forward. How QEC will be selling the power. We need the support from QEC.
 - Question: there used to be two locations – one other one – members did not like that option. Not sure how the current location was determined but know the other one was not good.
 - Members noticed that the area currently selected is the area with the most wind. Also mentioned that the area determined was also because not as many people went there.
 - HTA board agreed to area because less people used it
 - Main problem: not enough contact – communication issue. Community has lack of information – don't really know what is going to happen.
 - Also communication gap within the hamlet; because we are a non-profit, we don't necessarily have a place in this.
 - Mentioned that Growler/Odonaterra doesn't have a community contact. Stephanie agreed – said if we can get support in this, it would be extremely helpful.
 - Once concern from community is about lack of resources within community to operate and manage it. We want our own people to operate and maintain it.

- Question about when access road will be built. Stephanie responded that we are waiting for licenses – but possibly this year or early next year.
- There used to be a rock crusher (still have it) – could be useful maybe. Stephanie responded that the rock crusher could be used for six months, to balance with other projects happening in the community.
- There was a job opportunity in November – was it made public? Stephanie: Someone was hired, but they stepped back from the position. Couldn't find anyone afterwards.
 - o Members didn't know that this was posted; might be reason why nobody applied
 - o Stephanie asked what would be a better way to communicate with the community:
 - Posting around the stores
 - Facebook announcements
- There is fish habitat around the river by the access road
 - o Stephanie: we are looking into that – wouldn't be a full bridge - where we are building it's a small crossing – but we are working with the Nunavut Water Board to determine the right procedure.
- Would alignment matter? And would they be the same height?
 - o Stephanie – might not be straight line, but will all be same height. Location based on anchoring them (what is safest)
- Would transmission line be buried?
 - o No, it would be overhead.
- Are the turbines maintenance free or not?
 - o There will be maintenance, the amount will depend on the manufacturer
- How many people will be employed?
 - o Up in the air, hope to hire local members, unless it's a specialized skill where outside specialists are required.
- Do you think the community would be interested in employment and training for the project?
 - o Yes!
- Could this be an opportunity for youth to help build the green economy in the community?
 - o Possibly – right now most people are hunters; these people are not necessarily interested in construction/operation jobs. Prefer to go hunting
 - o We (HTA) help them to hunt, once they get the hang of hunting, they will go beyond. Might be possible to get them involved in this Project for employment, but I think as of now, it would be beneficial to speak to high school students who are split between two courses. One is hunting, one is economics
- It's really difficult to tell people to go to school, do trades, etc. They don't want to leave the community. "Why should I go to school if I get income support and also go hunting?"
- Would be better to have fences around. Kids and wildlife will get into it.
- Kids- access road goes toward the turbines – they could throw rocks – this may destroy.
- We had some fences – had to fix it. Fence was broken because people wanted to get in.
- Are the turbines going to be bullet proof?
- Do you think people would shoot accidentally? More for fun.
- Do you think if there was a collaboration between the hunters and support of the wind energy for the practices – could this increase respect and preservation of the wind energy, due to the direct positive impact seen in every-day lives?

- It's possible – it's difficult to explain to the generations on how economics work and how cheaper power can support them. They think that things are free. It's difficult; money is only 60 years old to us – we didn't have to buy groceries – didn't need to spend anything. Trying to learn now.
 - Maybe need to have some security around it. Don't really know what could happen
- There is lots that the public doesn't know about the details of the project, security, other infrastructure with the project We (Elders and members of the HTA) can tell people through the local radio station not to destroy the turbines. Not just you guys, but we, the HTA members (and others) will do the same.
- Hire a youth to be part of this actual project to tell their peers not to do this etc.
- Since 1990s – thinking of how to make things right – especially regarding hydro Quebec – in James Bay. They thought nothing would happen to us because we are far away but something is happening. After 10 years we were invited to a public hearing in Montreal – They also said it would be clean energy – no fuel etc. But it was in the end it is still impacting the environment in new ways.
- ****We are concerned about “clean energy” because it has caused problems before with hydro Quebec
- Really need a contact person, relay information
- We've had problems with other project (hydro Quebec, and iron ore bodies Canada) because of poor communication
- Traditional activities in the area:
 - There are some berry gathering areas along the way
 - There are goose egg gathering areas on the shores of the lakes around the turbines, particularly around the lakes east of the turbines
 - Fishing in the lakes northeast of the turbines
 - Maybe some bird hunting in the general area, but not much
- Any concern about the looks, or the sound
 - Not really, considering the distance (4.5km)
- Want to ask about birds – some can get hit by the blades and get killed.
 - No real concern
- Could birds get impacted by sounds from the turbine
 - We will find out when we get there.
- Do you feel comfortable not knowing for sure what the impacts could be?
 - Need to weight the pros of the Project vs. the cons of not knowing.
 - For the birds – if nobody really hunts in that area, they probably will not be bothered by this. The wildlife is a main concern when they hunt it in this area.
- Accommodation options for potential outside workers?
 - We have a hotel that will be ready this summer.

“Nakurmiik” (thank you in Inuktitut)

Radio Call-in

23/02/22

10:30am

- Energy would be beneficial to the community
- Can we have a public meeting?
- Does the noise from the blades disturb the wildlife and fish?
- Are there other ways to communicate with the public? Are you doing anymore engagement?
- Are the towers near the lake? Will they affect fish?
- Fiona: location was chosen with community input
 - o We would still like to meet in small groups/individually.
- I would love to be in a house with more windows and light, but it's too costly to heat, would like if wind could lower costs
- The younger generations should speak more about this
- Who are you working for?
 - o QBDC, NNC, Growler, Odonaterra
- Wind is intermittent, how will that work for the community? There is not always wind, you should know that
 - o Stephanie: there is a battery storage system included that will help with it
- Who owns it? It's not the same owners as the diesel plant is it?
- Did you look at solar? I would be more comfortable with solar, no noise like wind
- Are we first community in Nunavut to do a wind project?
- What is the price comparison between diesel and wind?
 - o Stephanie: Not sure yet, controlled by QEC who will sell the power to the community
- Why Sanikiluaq first?
 - o Stephanie: Interest from the community, and lots of wind
- Sometimes there are planned/unplanned outages, how will this affect it?
 - o Likely more reliable, with two different systems and battery.
- How well do the wind turbines in south work?
 - o Stephanie: they work well in the south and the north, 30 year lifespan usually
- Would there be a reduction in price?
 - o Stephanie: we're not in control of that as a team, but wind power is generally cheaper
- If there is an effect on wildlife, will there be compensation for people who lose hunting opportunities?
- How many turbines will there be?
- How will it impact birds in the area? Snow buntings are in the area.
- Can the windmills catch fire or break down in high winds?
- Will there be any changes in to billing?
- Caller says they support the project

Discussion with Kenny

23/02/2022

5pm

- 250-300 per day to go out to hunt polar bear
- Polar bears hide are an important source of income for the community, sell at auction for \$3000 or more for 10ft+ bear at auction
- Advances would be provided in the past, with the difference bring paid after the hide sold
- Advances were not available this year,
- 25 bear quota for community, with 8 bear credit this year from

Arctic College Meeting

February 23rd

1:30pm

Participants:

- Project team: Devin, Fiona and Stephanie
- Instructor: Deborah
- 3 Students
- 1 assistant

Devin presented – our roles, what is proposed.

Questions:

- Deborah: Why is it 4.5 km from town?
 - Area was looked at with the community previously – less land use I that spot; less hunting and gathering. Ridge is quite windy; good for having more wind generation. Tower that's currently out there gathering wind speed and direction for last two years.
 - Another thing is there are restrictions to airport distance (4km radius)
 - Also want to minimize sound pollution
- Deborah: Will the community experience financial savings?
 - Stephanie: QEC would be responsible for distributing energy to the clients. Wind energy is usually cheaper – so it is up to QEC to determine energy
 - Deborah: Residential is subsidized – but commercial is not – hardest on the businesses who are spending a lot for their businesses.
 - Deborah: Good for the environment on its own, but would be an added benefit if there was a direct financial impact.
- Steven (student): How is the sound pollution? For community, but also, more importantly, the wildlife
 - Stephnaie: Not at the distance
 - Fiona: Wildlife less present in the area selected for the location
- Deborah: If opportunity was there for something larger, why not facilitate for the whole community?
 - Stephanie: Half is to introduce idea to the community – want to ensure that reliability is maintained
 - Stephanie: Want to prove that it works and can always build on that.
 - Devin: Something to consider is that one big turbine – if it needs maintenance, there would be a pause in the power, vs. many small turbines, where only a fraction is paused.
- Steven: Can you have windmills that are an adequate size to put on a cabin?

- Stephanie: Yes, but there are more risks to these; more likely to break
 - Stephanie: Reason why we put up the tower; to measure wind speeds that are safe; and build a size that is safe
- Deborah: When will project be built?
 - Stephanie: As soon as possible but within reason
 - Stephanie: Hoping in next couple of years
 - Stephanie: Part of project is to add access road; construction could begin early this year, or early next year.
 - Stephanie: Will be about 2-3 years until the wind power should be functional (winter construction is limiting; will be focusing on summer months)
- Assistant: How much maintenance?
 - Stephanie: Depends on the model
 - Fiona: Opportunity for employment – trying to focus on employment locally
 - Get people with existing experience as well as provide training
 - For construction, there will be many more positions available, as well as a few longer-term maintenance
- Deborah: Employment is difficult here – not centralized – don't have a central office; not many government jobs here. Any new jobs here make a huge difference in the community.
- Fiona: What programs are available at the college?
 - Deborah: Environmental technology program provided by the artic college main campus (Nunatta campus and another – confirm) – 2 year program – environmental training and technologies – wonderful program
 - One graduate is our recently elected MLA, one is wildlife officer, and one in eider society. All actively involved.
 - Would be beneficial to speak with the ETE principal – would want to tie in some knowledge there
 - At community level, not many environmental training programs – doesn't mean something couldn't be established.
- Deborah: Have you found any IQ from community?
 - Not quite yet
 - Don't really see how it relates. Doesn't seem to compromise any of them
- Important reps are HTA and the Eider Society
 - These projects are openly shared with a lot of information.
 - We have had a lot of bad history; break communication – developed mistrust and resistance
 - Community often feels that a project is out of the blue – although council may have agreed to it.
 - Best bet for hire is Sanikiluaq announcement page. Has a wider reach, gets more attention. Town meetings are affective when it's a possibility.
- Construction worker that popped into classroom: What are we doing for batteries?
 - Steven: Should get molten salt batteries!
 - Stephanie: We don't know yet

- Deborah; How much danger is there to children? Half of our population are children or youth?
 - o Stephanie: Plan is to fence off the turbines
 - o Construction worker: need security against vandalism
 - o Stephanie: We are thinking of how to address that
- Steven: In future when COVID has decreased, it's good to have door prizes
- Deborah: We can assist with SIQU group or environmental committee
 - o Deborah: Can give contact information and in the future, we can have some community consultation at the College
 - o Deborah: Even if you can report the progress from time to time.
 - o Deborah: Should also meet with the wildlife department (stories get started about the dangers – need to educate community about this)
- Deborah: Would be good to have a quarterly meeting with Sanikiluaq members
 - o Very important to decrease bias.
 - o Could include Facebook post more frequently; short, friendly message
 - o Most people are now accustomed to video conferencing.
 - Could do once or twice a year; live updates through CBC
- Fiona: Any contacts for workers in the diesel industry? Miti Coop – delivers diesel to the community - would be contact for workers in diesel industry
- Steven: What about solar?
 - o Stephanie: Possible, but there are restrictions such as: Battery/space/ winter vs. summer
- Assistant: Should meet with fire fighters. Address emergency – response procedures.
- Students: Worried about climbing and rock throwing (farther might be better). But upgrading the trail will increase accessibility
 - o Steven: Could get a camera to get footage.
 - Yes – could also be beneficial for wildlife
- Steven: Height of the turbine?
 - o Anywhere from 10, 15, 30-50m
- Steven: Combine the cell tower with the wind turbine. Preventing community from vandalizing it.
- Fiona: How has it been to have outside workers coming in?
 - o Deborah: Depends on the project – always best to involve the community. Employing the community and respecting the community.
 - o Many that can work in labour positions at minimum

Fiona: what does the current program at the learning centre look like?

2-year program for office administration-

- courses: proof reading and editing , management and communication, excel
- Fiona: What do you (students) want to do with your certificate?
 - o 1 – work at the hamlet,
 - o 1 – work at the health Centre,
 - o 1 – work with helping communities with translation and paperwork; help community members succeed
- Need an Inuit SAO

Fiona: What types of programs have been funded in the past?

- Deborah: Interpreter translator program used to be algonuin college – now it's under Arctic College
- Future plans - bring memorial college into Arctic college.
- Go through community needs assessment to see what is needed. Determined that office admin is the most necessary. Need to work with what community wants and what we can get behind.
- Had office admin last year and this year. Want to combine them so the students can complete the diploma after two years (one year would just give them a certificate. Had 5 last year).
- Also had Nunavut teacher education program; 5-year program .
 - o When it finished, we were forced to come back to this building.
 - Next needs assessment is next year; one each year – we make adjustments based on different needs.
- For daytime programs, it's better to communicate with highschool principle for – often done in the community hall – high school provides space for training

Fiona: What are examples of programs that you would like to get funded but have not gone through?

- Camp cooking and industrial cooking program – lots of people wanting to work for the hotel – don't have a kitchen so it's hard. Fur design – been 7 years since we had a fur design program.
- Was a push on adult basic education – included 3 types of upgrading levels – the community didn't want it and there was very low involvement.

Fiona: Who fund these programs?

- Funders – it varies – depends on type of program – department of education is a bigger funder – CanNor entry-level jobs, COCUBAC, NTI, QIA –
- Ours are usually split between CanNor and something else

Advice on how to do things right:

- Territorial park in the community – example of how to do things here. Constantly maintaining contact. Steven is part of the community.
- Chris Gosset AARLUK Consultants – have an Iqaluit office as well – our experience has been through the territorial park; partnering with the community and advising.
- They are usually in here twice a year – team with 3-4 people
- Also have video conferencing
- Have established good friends in the community – they are the example.

Questions:

- Should be fencing around the project and good access road – and bridge built to mitigate damages to the stream running across the project, and land east of it should not be disturbed.
- Council wanted to have the wind project to make things cheaper. Now we heard that QEC will be selling the energy and the prices may not decrease. This is not what Council thought was the case.
 - o Stephanie: Will be speaking to QEC on this to make sure that the concern is addressed, and we work to make cheaper energy possible.
- No surprise that the public did not know about this – we did not go to public yet – we want to get more information first before we bring this to the public.
 - o Council would like more information about the project before gets going, and on an ongoing basis
- We urged the previous MLA to go to the gov of NU to enact law where power generated by wind be sold to Hulyk and power be distributed to public. And that way we may not be reliant to diesel power. We should check upon whether they enacted those laws regarding power sold to Hulyk energy
- We were told we are third community doing windmills. Are the other communities still doing this?
 - o Stephanie: Other communities are looking into it – have not yet completed. But they are open to it.
- Before the project gets going and before we leave, we need a contact person so we may have someone to relay information to the community.
- Rates: As we know, public housing tenants – rates are lower than those of home-owners. Would there be changes to the rates for public home-owners?
 - o We don't know yet but would love to have the conversation what the community wants to see.
- Last meeting, we had Allan Rumboldt – he might go to Legislative Assembly and get the company to buy the project – if you can get in contact with Allan, and see whether there are updates on that, that would be great!
- Need a contact person for the Project; Project might not go ahead if you don't find a contact person.

Meeting with Community Justice Coordinator

February 25, 2022 (3pm)

Participants:

- Sarah (Community Justice Coordinator: 867-222-1774)
- Fiona (Odonaterra)

Has a quick pop in with Sarah who has a few minutes to discuss her role as a Community Justice Coordinator. Her job mainly consists of doing the paperwork (usually the RCMP is the first responder to domestic violence cases, and Sarah coordinates the next steps of where the individual goes next, the support they receive, etc.). Below is some information that was provided by Sarah:

- Currently, domestic abuse is a big issue in Sanikiluaq.
- Because of the housing issue, women who file for abuse are not provided with their own place to live and are forced to move back to their direct family.
- Not really any programs for these women to take part in. Only really financial help, and direct response and communication with these women. No therapy afterwards.
- There is a direct correlation between Drug and alcohol abuse and domestic violence in the community

Sarah is also the Community Wellbeing Coordinator (ran out of time during meeting, but will ask Sarah more about the programs provided through this service)

Allan Rumboldt Interview

Date: 2022-02-25

Location: Project team residence

Participants

- Allan Rumboldt
- Devin and halfway through, Fiona (Odonaterra)
- Stephanie (Growler)

Possible Partnerships for Project:

- Some community members have there trades
- Class 3 licences and heavy equipment operators licences are more common in the community
- No companies to do housing construction, hired in from outside, often hire locally
- "Gary's equipment" is the only general construction company in town, 2 loaders, dump truck coming on sea lift next year, telescoping lift, do snow removal
- Thought it was good to start getting ready for wind energy project
- Possible road to new park, new road to new dump, and new road to wind energy
- Probably partial bid on the road project
- Have to buy the material for the municipality, then sell/deliver to the project
- Hamlet owns the gravel crusher in town, possible lease arrangement for the crusher

Traditional Activities:

- Very little trapping in the community, fewer than 5, just recreational, only for foxes
- Lots of berry picking, Project area has quite a bit
 - Blackberries (not southern blackberries, same as in newfoundland), cranberries, cloudberrries
- Fishing in the lakes near the project
- Distribution in the community, often to family, or to others in need
- Allan often gives all his seal away
- Beluga will be sold outside of the community, for muktuk
- Sanikiluaq doesn't have a quota for beluga, Quebec communities do have quota, and so will buy from Sanikiluaq
- 30-100 beluga harvested by the community each year
- Odd bowhead will come to the area, killer whales will come to the area as well
- Entrapment events happen with beluga in the area, narwhal in further north

Socio-economic:

- Lots of single parents here, typically would live off the stores
- People with hunting in the family, a lot of country food
- More country food in the spring and summer and fall, geese all summer, fish all summer
- Snow melts fairly quickly from the land
- Ocean ice between mid june and late june, open enough to use boat
- Late march, weather starts fluctuating between cold and warm
- Lots of wasps and bumblebees in the summer
- Houses are experiencing warping here after being built on pilings like elsewhere, better to be built so they are adjustable

- Concern for silt runoff if the road gets washed out from the spring freshet into the stream that the road will cross
- Possible water treatment plant in the next number of years, \$30-40 million project
- New hamlet office building tender planned for summer
- Second winter in temporary hamlet building for council
- Plans for new dump site, needs to be 4km from runway
- Plan to make a new sewage lagoon on the books for last 14 years, plans now to just upgrade old one to extend life for ~50 years
- Gary owns 51% stake in old construction company, and has his own company, \$250k revenue in 2021, first year of operation
- Interior construction capacity is limited
- Services for community are split between Iqaluit and Rankin Inlet, governance is often out of Iqaluit, other services out of Rankin
- 3000 housing units needed in Nunavut, funding roughly provided for 150 a year
- Public housing, private, and staff housing, if on income support, rent is \$60, power is covered by income support, Elders living alone live for free
- Housing corporation will give housing package to construct houses
 - o Elders can sell their house and move into public housing
- Building a house in Sanikiluaq is very expensive. Building costs are 700-900k per unit, sale prices around 70-120k in town
- About 60% of Sanikiluaq residents live in public housing (subsidized)
 - o The amount paid depends on the income of the family post-family expenses.
 - o Elders receive free lodging
- Income thresholds for public housing, because of limited supply, there is a scale for paying for public housing, lowest end is \$60, upper end could be \$2000+
- Rent vacancy is effectively zero, some rooms or occasional houses are open on a temporary basis
- Many people who have income also live in public housing, however, the downfall of this is that the local government has control over who goes where, and may move you depending on needs in the community.
- Occasional grants from QIA to go mine soapstone and bring back and supply to community
- There are some cabins on the land, but tents are generally preferred
- Any Inuit can guide, but is often for research purposes, limited to no vacationing, some guiding for hunting
- **Make the road end further away from site with a gate and a smaller path to the site

Nuiyak – Elementary School Meeting

February 25th, 2022

11:30am

Participants:

- April (principal)
- Fiona
- Devin
- Stephanie

April has an environmental studies background and was very excited about the Project. She asked about alternative design options for the wind turbines, such as propeller-free turbines, which could have a more positive visual effect. The team mentioned that this is a great idea because it could also help to limit the opportunities of turbine vandalism. April agreed that vandalism is a big problem, and this could be another supporting solution.

Another idea April had to help educate her students, is for the team to provide with education material to her students. She mentioned that currently, renewable energy is in the curriculum, and that students have been learning about different energy options, including solar and wind. She explained that for this reason, the energy Project could be really easily incorporated into the curriculum, and that this could furthermore help to educate the young generation to respect these structures in the future.

Stephanie mentioned that there may also be an opportunity for students to name the Project – April thought that this was a great idea and offered her support for this initiative for when it is time.

April also mentioned that Sanikiluaq often gets left behind from the rest of initiatives in Nunavut, as it is so far away from the rest of the territorial communities. Often, members feel like they are “treated like dogs”, in terms of infrastructure and support. This includes educational opportunities. Programs are not as extensive as in other locations. Members feel somewhat “forgotten”.

Information given about the school:

- Approx. 160 kids in the grade school and approx. 130 in the high school.
- Currently during COVID-19, classes are staggered; all classes are split in half (families stick together), and group 1 goes Mon& Tues. on the first week while group 2 goes to school Wed-Fri. that same week. The next week the time is swapped; group 1 goes to school Wed-Fri and group 2 goes Mon-Tues.
- Because a lot of community members feel like the insecure about the safety measures (another way members feel left behind; isolation based on Gov. orders started much later in Sanikiluaq

than in other NU communities, although they had the first cases of COVID in Nunavut) – many parents have to been bringing their kids to school at this time. April explained that normally, the school should have 60 kids (when split in half during COVID) bit instead, there are around 12 kids that show up each day. There are about 2-3 kids currently arriving for each class.

- Kids in gr. 1-3 are taught 3 classes in Inuktitut and 1 class in English; and kids in gr. 4-6 are taught 3 classes in English and 1 class in Inuktitut.
- The grade school used to be the general school, and a gathering centre. It still has the museum that was established at the time. Displayed are traditional activities including hunting, soap stone carvings, basket making, tools, traditional clothing etc.

Joel Heath Meeting
27-02-2022

- Would have to buy one of the turbines (100kW) in order to meet power needs of the research centre and community freezer with excess
 - Able to go "behind the meter" to supply the buildings
- Smaller turbine would be enough
- Solar is viable here as well with sun in the winter
- Garage, eider college, building out an eider economy
- If they start the blue fishery, would need to store in the community freezer
- Most expensive cost for the society is heating, would be win-win cause charity, excess power could go to freezer
- Considerations for commercializing community important foods
- Seasonal shift in diet in the seals for shrimp, more fish in the summer, more shrimp in the winter
- Siku data went back to informing reindeer harvest, reduced last year after knowledge from Elders, and data from flyovers
- Protected area for all of the islands, QIA wants to go with Marine protected area, but community wants to protect the land as well
- ITK is making new legislation to inform Inuit protected areas
- SIKU provides data on return on investment for protected areas
- Buy in is better with programs like SIKU where harvesters are putting info and effort into the system
- Chat with MLA about putting pressure on QEC
- Qikiqtait Protected Area, linked to funding for the community projects that are associated, can be a positive selling point
- Green inclusive energy fund to fund the acquisition of
- Maybe some influence on raptors, snowy owls,
- Not a substantial bird habitat
- Some geese might be flying through the area, but could be higher above the turbines
- One larger one would be visible from farther away, more impact, less desirable
- Might be beneficial to trial 25 or 50kw ones, helps for proof of concept
- Harder to buy one for research centre if they are too large
- Security/camera system of some kind to monitor the area for people/wildlife, motion trigger light with camera
- Employment for maintenance if possible, better if there are opportunities for the community
- Concerns for icing might be an issue on the towers, blizzards
- Better to include a tower on the farm than in town, less issues with community, even with bringing in a 25kw or 50kw
- Maybe buy and include a smaller turbine with the farm as a collaborative effort
- Eider society is taking on the research centre project, has MOU with hamlet, HTA office included, research lab, exhibit centre, accommodations, garage for skidoos and tools for community use
- Crane, manulift, Merlo brand, might be useful for Project***
- Including net zero building with project will be good for comms, exposure

Meeting with the Economic Development Officer

February 28th, 2022 – 2pm

Location: Hamlet office

Participants:

- Michael Rowan (Economic Development Officer)
- Fiona and Devin (Odonaterra)
- Stephany (Growler)

The team met with Michael in the Hamlet office. Michael was enthusiastic about the Project, especially when it was confirmed that the access road would be funded by the Proponent. According to Michael, this would make things “much easier” and will very much benefit the community. Originally said that if it came to it, the Hamlet could try to apply for up to \$1/2 million – but with this not necessary, it will open things up for other initiatives, and the Project will likely proceed faster.

Below are questions answered by Michael:

- **Top employers:**
 - o Construction – two companies: Kawtaq Construction and Nunavut Construction Limited
 - o Room for cooperative work on construction – could sub-contract out the work. The companies often do projects with their team but for this, we may need some more training to have the proper capacity.
 - o People are usually happy to do seasonal, impermanent work. People will definitely apply for jobs provided by the Project
 - o Capacity levels: Stephanie will send a list of the types of jobs that will likely be needed for the Project – Michael to determine which of these jobs may require extra training.
- **Top economic activities:**
 - o Construction
 - o Social work (instruction/ health/ mental health/ addictions/ food security/ traditional skills)
- **Mining** – no current activity for diamond and iron mining. However, gravel mining is happening; currently training four workers to begin mining gravel this season. Soapstone is currently mined locally; two types of soapstone are present on the islands; one is near black and is specific to the Belcher Islands. Community has decided not to export this one in hopes of preserving it. Another type of soapstone exists for which there have been discussions for exportation. Has not been decided yet, however.
- **Tourism** has never been very big in Sanikiluaq, although there are some hopes that this could increase with the national park that is being developed on the Belcher Islands. COVID has slowed this down. Likely will not generate primary income though – can imagine that it could one day generate approximately \$20k per year.

- **Sea Lift:** Usually four sea lifts come in per year between June – mid-September. One of these is a fuel tanker.
 - All sea lifts are coming from Montreal (possibility of them stopping over in Iqaluit)
- **Money spent on community wellness:** about \$40,000 per year on the following:
 - Breakfast program
 - Diabetes education
 - Exercise
 - Family and childcare (this is the biggest one)
 - Art classes
 - Traditional activities (crafts, sewing, hide making etc.)
- **Housing:** Currently, there are not enough houses. Suggests that the Proponent builds approx. 3 homes in the community to house its workers, and later sell back to the community. Would be beneficial to community in the long run. The local housing corporation in Sanikiluaq is called the Kamik Housing Corporation
- **Ideal future economic opportunities (according to Michael):**
 - This wind energy project
 - Housing development (currently, homes are built by the Nunavut Housing Corporation: NHC)
 - In 2017, 20 units were built by the NHC – made a huge difference for the community and its wellbeing!
- **Current programs helping with Econ. Dev:**
 - Small Business Support Program (through EDNT)
 - Summer Student Work Experience Program (usually get 20-30 students per year. This is a type of “shadowing” program within the community. It is run by the Kakivak Association)
 - Subsidies Program
- **Current local resources for the Project that could be used by the Proponent** (operating costs are in question):
 - Rock crusher (need ideally 6 months’ notice to rent it out)
 - Compactor
 - Crane (this was actually mentioned by Joel from the Arctic Eider Society; putting here for convenience. This crane is owned by the AES; contact Joel for more info)

Michael agreed that he would be in touch with the team and provide some more information, as indicated in the notes. He also agreed that his office would be the right place to send job applications in the future.

Health Centre Visit

Feb. 28, 2022

Participants:

- Jill (head nurse)
- Devin and Fiona (Odonaterra)
- Stephanie (Growler)

Jill showed the team around the Health Centre, which was built just a year ago and now includes some new machines (updated), although capacity has not changed. The Health Centre has an emergency room, birthing room, as well as an infant incubator (?), an X-ray room, a pediatric room, negative airflow (?) seal doors that can be used to prevent spread of disease; adapted to pandemic circumstances, a COVID-19 testing station, a kitchen for healthcare staff who need to stay in longer hours. Currently, there are no blood transfusions available in the Centre.

- Jill explained that the missing items she would like to have are more nurses, as well as an ultrasound machine
- In emergency situations, an on-call emergency paramedic is called, who generally flies in from Winnipeg. Can take up to 24 hours to get one to Sanikiluaq. Patients must be stable to fly – otherwise, they must stay in the community. In a life-threatening circumstance, nurses may be put into the position to perform procedures that a doctor would normally do, to try and save the life of the patient.
- Expecting mothers are sent to Winnipeg 1 month before expected delivery. Expenses are paid for them; sometimes they stay in the Winnipeg hospital, or a hotel, etc.
- New building is currently being built beside the Health Centre to accommodate nurses
- The Health Centre works with the police and fire department to fill the need for paramedic services. The police has appropriate vehicles for emergencies on the land.
- The majority of health issues treated in the hospital are related to the following:
 - o Alcohol and drug use
 - o Domestic abuse
 - o Bad nutrition (from Western diet) – often seen in gull bladder issues
 - o Skin issues due to inadequate living conditions (sharing space with too many people, not enough opportunity to wash – etc.)
 - o Dentist is also very busy whenever he comes (ever two months)
- COVID-19 testing is available at the clinic
- On a monthly basis, the Health Centre sees about 800-1000 patients.
- Current capacity of the Health Centre is able to accommodate this amount of people. However, when new projects come in, it is worthy to consider bringing some extra health workers in to fill the need. Suggested the Proponent of the Wind Project also considers this.
- The Health Centre does not provide any training programs, or health support programs. This would be done by the Community wellbeing coordinator (Sarah). The health Centre is solely a

place to get primary treatment, while other initiatives are planned through another funding stream.

- Currently there is no course available for first aid treatment (although some labour workers may be doing these as part of their job training; for example, the four workers training to work at the gravel quarry are currently doing a CPR course).

Meeting with the Sanikiluaq Income Support Coordinator

Feb. 28, 2022 (10:30am)

Participants:

- Martha Qittusuk (Income support coordinator)
 - o mqitusuk@gov.nu.ca
- Fiona and Devin (Odonaterra)
- Stephanie (Growler)

The meeting started with Fiona explaining the Project and the value of meeting with Martha as she works with community members who have not been finding jobs.

Martha reacted very positively toward the Project and said that she believes this will be very good for the community. Below are some facts that Martha shared with the team:

- Currently approx. 300 people in Sanikiluaq on income support; people between ages 18-59, need to be looking for work to be on income support
- COVID-19 has increased these numbers; people have lost their jobs as a result of the pandemic (some artists, infrastructure, recreation, social activities)
- A building used to be available for artists (art portable). This building no longer exists due to its structural challenges from age. Does not necessarily have to do with COVID-19; it's just old.
- There is a huge housing shortage. Many people get their housing subsidized
- Currently no financial assistance to youth, as far as Martha is aware.
- People do not often leave Sanikiluaq for other job opportunities. Members are very tied to their own community, and having available jobs here would very much increase the likelihood for members to apply (rather than external jobs)
- Hamlet employs the most, there are some construction jobs in town, otherwise not many job opportunities
- Some members are not interested in developing their own businesses and/or finding work; they prefer to practice traditional activities. Selling traditionally harvested foods/skins etc. is legal for the Inuit and is practiced here often. Helps people get by
- Certain that any job openings here will receive applications. There are always people looking.
- Suggested we bring applications to the Economic development officer and confirm once it is available so Martha can tell the members she works with that this is available.



ካምፓላፕሮፍ
ሲፓላፍሮፍ
ሲፓላፍሮፍ
ሲፓላፍሮፍ

ፈረንሳይኛ
ፓላፍሮፍ

ፈረንሳይኛ
ፓላፍሮፍ

ፈረንሳይኛ 21ፖ 28ፓ

ፓላፍሮፍ
ፓላፍሮፍ
ፓላፍሮፍ
ፓላፍሮፍ
ፓላፍሮፍ
ፓላፍሮፍ

ፓላፍሮፍ
sanikiluaqwind@gmail.com



**Sanikiluaq
Wind Energy
Project**

**We want to hear
from you!**

Share your
Inuit Qaujimajatuqangit (IQ)
and community knowledge

February 21 – 28

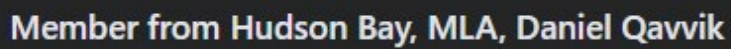
Tell us what the project means to you!

To book a conversation with us,

call or email:
519.803.9507

sanikiluaqwind@gmail.com

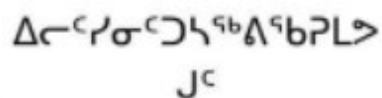




February 25 · 🌐

Sanikiluaq Wind Energy Project

For any questions or concerns regarding the project contact: 519-803-9507 or email: sanikiluaqwind@gmail.com



$\Delta_{\text{ad}} \propto b^{\frac{1}{2}} L^{\frac{1}{2}} \gamma^{\frac{1}{2}} \sigma^{\frac{1}{2}} D^{-\frac{1}{2}} \epsilon^{\frac{1}{2}}$

ከመጋቢት ፳፻፲፱ ዓ.ም. ጀምሮ
ጤናማ ልማት ለማሳደግ
ጤናማ ልማት ለማሳደግ
ጤናማ ልማት ለማሳደግ

△▷◁ℓ **21Γ^c 28J^c**

[illegible]

sanikiluagwind@gmail.com



We want to hear
from you!

Share your
Inuit Qaujimajatuqangit (IQ)
and community knowledge

Sanikiluaq Wind Energy Project

February 21 - 28

Tell us what the project means to you!

To book a conversation with us,

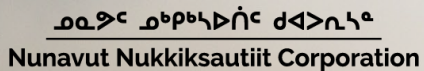
call or email:

519,803.9507

sanikiluaqwind@gmail.com



1



Sanikiluaq Wind + BESS Project

Community Partnership Presentation

MARCH 24, 2022

| Sanikiluaq Wind + BESS Project

| Project Update

RECENT PROJECT ACTIVITIES

Completion of Front End Engineering & Design Report

Visit to Hamlet to conduct community engagements (February 2022)

Site visit and discussion at Hamlet Council meeting (October 2021)

Preparation of Execution Plan for Construction (Ongoing)

CURRENT PROJECT ACTIVITIES

Preparation of Sketch Plan for Land Use/Lease Discussions

Preparation of Documentation for NIRB/NPC Applications

Preparation of Commercial Packages for Major Procurement Items

Project Naming/Logo Contests

Power Purchase Agreement Discussion

NEXT STEPS

Community Benefit Sharing Discussion

Environmental Approvals

Power Purchase Agreement Execution

| Sanikiluaq Wind + BESS Project

| Community Concerns

1)

2)

3)

4)

COMMUNITY CONCERNS

We heard the following concerns during our last visit:

- 1) Electricity Rate Increases – Rates are controlled by QEC, however the project will ensure that energy from the project is provided to QEC at a cost less than their current cost of diesel generation.
- 2) Safety & Vandalism – Concerns were raised about climbing turbines and damage to equipment. Steps will be taken to ensure the safety of Sanikiluaq residents and project equipment.
- 3) Noise – Residents expressed concern with the impacts of noise on wildlife. The project can confirm that there are no expected impacts relating to noise. The project team will complete all reasonable mitigations in the event of an unforeseen impact.
- 4) Community Engagement – Residents of Sanikiluaq want to see more community involvement and more communication relating to the project. The project team will explore ways to raise awareness and provide renewable energy education, as well as a way for residents to ask questions or express concern.

| Sanikiluaq Wind + BESS Project

| Project Timeline

2022

-
- Power Purchase Agreement

2022

-
- Regulatory Approval*

Q4 2022

-
- Civil Upgrades*

2023

-
- Electrical Works*

Q3 2023

-
- Turbines & Batteries*

2024

-
- First Power*

*

| *PPA Dependent



ᓄᓇᓂᓪ ᓄᓪᓴᓴᓴᓴᓴᓴ ᓄᓄᓄᓄᓄᓄᓄᓄ
Nunavut Nukiksautiit Corporation

| Sanikiluaq Wind + BESS Project

| *The Importance of Community Participation*

- , , ,
 -
 -
-
- Benefit sharing is mutually beneficial and helps pursue common goals by leveraging the knowledge and strengths in the interest of both the community and the project.
 - Ensures that the community's interests and priorities are protected throughout the entire development process
 - Bi-directional knowledge transfer develops local capacity to promote self-sufficiency and sustainability within the community



| The Importance of Community Participation

-
- NNC**
- ᓄᐱᕐᕈᑦ ᓄᐸᕋᕐᓴᓂᓯᓯᓯ ᓄᐱᕐᓴᑦ
Nunavut Nukkiksautiit Corporation

/

- Annual fixed payment provided to hamlet with no required capital investment or operations risks.
- Funds from community enhancement fund can be used as the community desires to help meet the needs of Sanikiluaq as determined by Sanikiluarmitut.
- Additionally, community will be given preferential procurement and employment opportunities



/ Advantages of Benefit Structure

- ### Advantages

- NNC**
ᓄᓇᓂᓐ ᓄᓈᓈᓕᓕᓐᓂᓐᓂᓐ ᓄᓂᓂᓐ
navut Nukkiksautiit Corporation

/ Range of Benefits from Project

The community enhancement fund is expected to provide considerable value to the community.



/Thank you



ᓄᓇᑭᔪ ᓄᐅᐅᓴᓗᑯᑦ ᓄᓕᓗᓂᓴ
Nunavut Nukkiksautiit Corporation



867.979.8400



hshilton@qcorp.ca

Sanikiluaq Hamlet Council Meeting

March 24th, 2022

- Land Lease application was approved in council meeting before arrival of Sanikiluaq project team.
- HSH provided an update on the project
- HSH proceeded to introduce the community enhancement fund benefit sharing structure, with an emphasis on the fact that no capital investment will be required from the community.
- Councilor raised the point that all information being shared is irrelevant and unimportant if team is unable to secure power purchase agreement.
- No questions were asked by councilors as the meeting reached the lunch hour. Presentation should be shorter next time to facilitate allowing a question period.

Sanikiluaq HTA Meeting

March 24th, 2022

- HSH provided an update on the project
- HSH proceeded to introduce the community enhancement fund benefit sharing structure, with an emphasis on the fact that no capital investment will be required from the community.
- Questions asked by HTA members:
 - Will transmission be via overhead line or underground cable? Will structures for overhead line be wooden or steel?
 - Will there be a fence around the project site or other security measures?
 - What is the status of the collaboration/coordination between the project and QEC?
 - Has the project established a community contact/community liaison?
 - When will material/equipment for the project begin to arrive in Sanikiluaq? When will the road be built?
 - Will the HTA hear from NIRB/NPC throughout the application process?